

V&V Reference Report

L2 ASCDS Version : 7.6.9

Observation 2552 - L2 Version 001
Chandra X-Ray Center

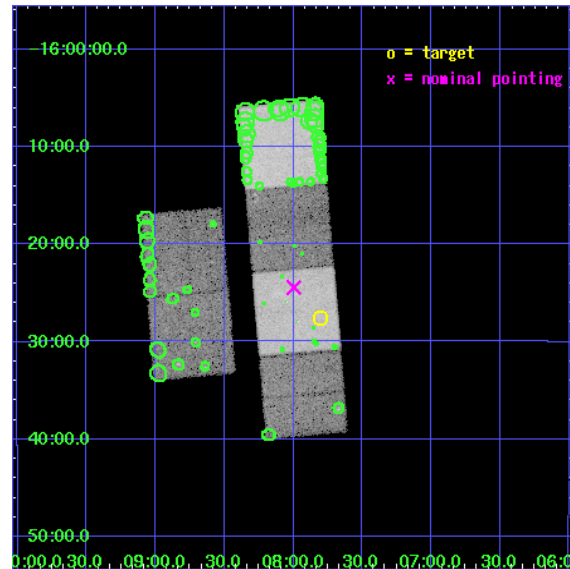
L2 Processing Date : Sep 14 2006

Contents

1	Front	2
2	OBI	3
2.1	OBI	3
2.1.1	Images	3
2.1.2	Bias	3
2.1.3	Parameters	4
2.1.4	Events	4
2.2	Compared Parameters	5
2.3	Aspect	6
2.4	Star Slots	9
2.4.1	Slot 3	9
2.4.2	Slot 4	10
2.4.3	Slot 5	11
2.4.4	Slot 6	12
2.4.5	Slot 7	13
2.5	FID Slots	14
2.5.1	Slot 0	14
2.5.2	Slot 1	15
2.5.3	Slot 2	16
3	Point Sources	17
A	Summary	18
A.1	Status	18
A.2	Comments	18

1 Front

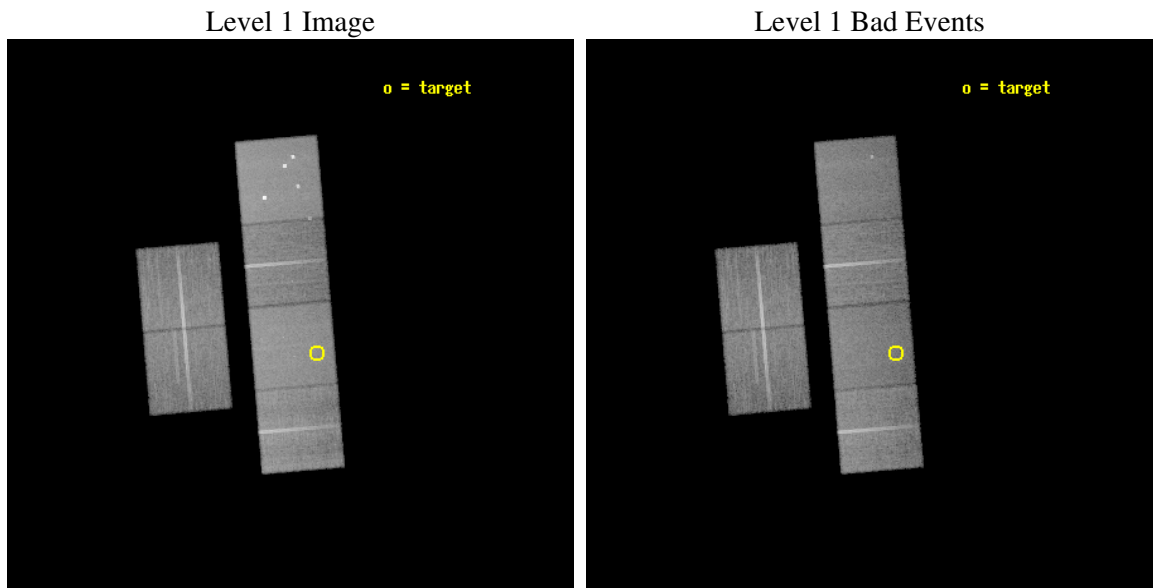
seq_num	200160
obs_id	2552
title	STELLAR CORONAE AT THE BOTTOM OF THE MAIN SEQUENCE: A MULTI-WAVELENGTH STUDY
observer	Prof. Robert Rutledge
object	2MASSW1507-16
dtcycle	0
cycle	P
ra_targ	226.95
dec_targ	-16.460556
ra_nom	226.99897926986
dec_nom	-16.407569539134
roll_nom	85.170508501132
revision	2
ontime	28057.599895477
livetime	27702.317671342
ontime2	28054.358925194
ontime3	28054.358945131
ontime5	28057.599895477
ontime6	28054.35904479
ontime7	28057.599895477
ontime8	28057.599895477
l2events	280996



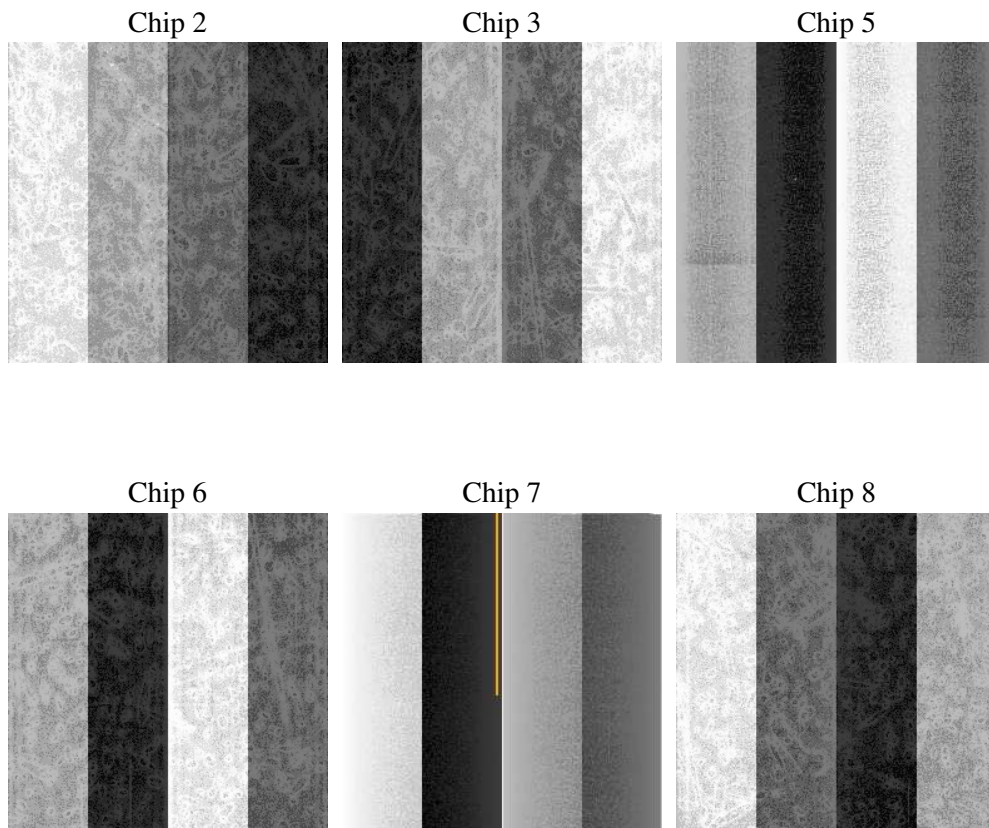
2 OBI

2.1 OBI

2.1.1 Images



2.1.2 Bias



2.1.3 Parameters

obi_num	0
ascdsver	7.6.9
caldsver	3.2.3
date	2006-09-15T01:41:01
revision	2

sched_exp_time	28000.000000
ontime	28063.846423984
ontime2	28060.605433792
ontime3	28060.605473638
ontime5	28063.846423984
ontime6	28060.605573297
ontime7	28063.846423984
ontime8	28063.846423984
l1events	1314887

2.1.4 Events

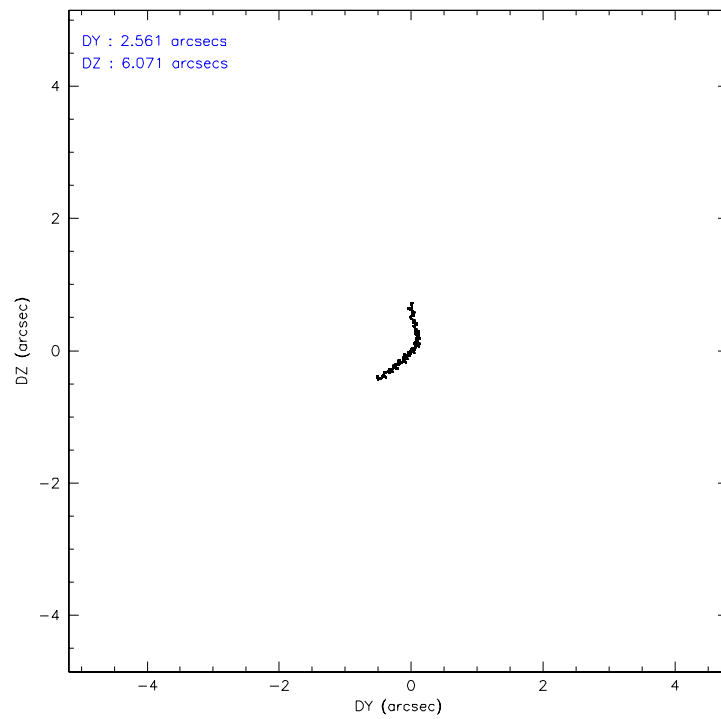
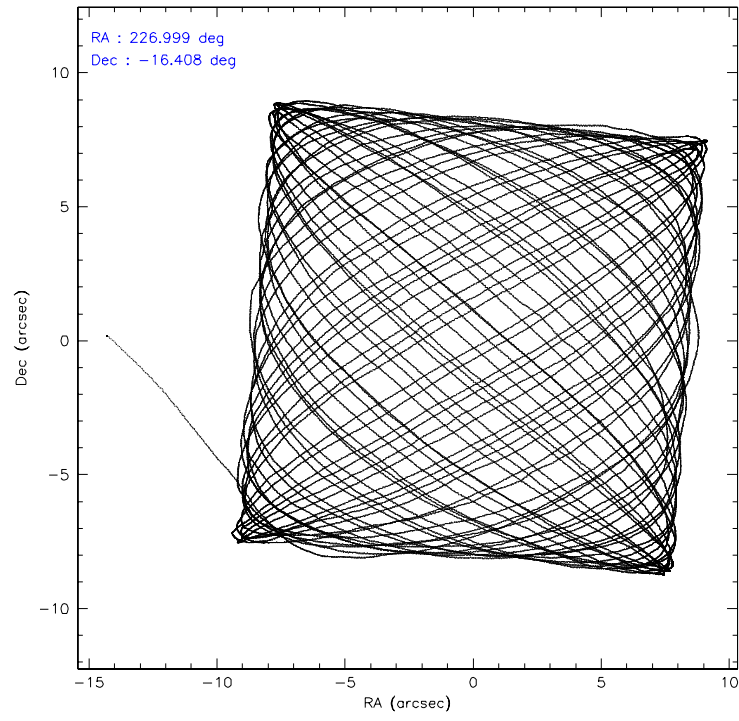
	ccd 2	ccd 3	ccd 5	ccd 6	ccd 7	ccd 8
level 1 events	193336	179925	279081	186652	244514	231379
rejected events	171492	158315	149220	164255	150373	182500
rejected %	88%	87%	53%	88%	61%	78%

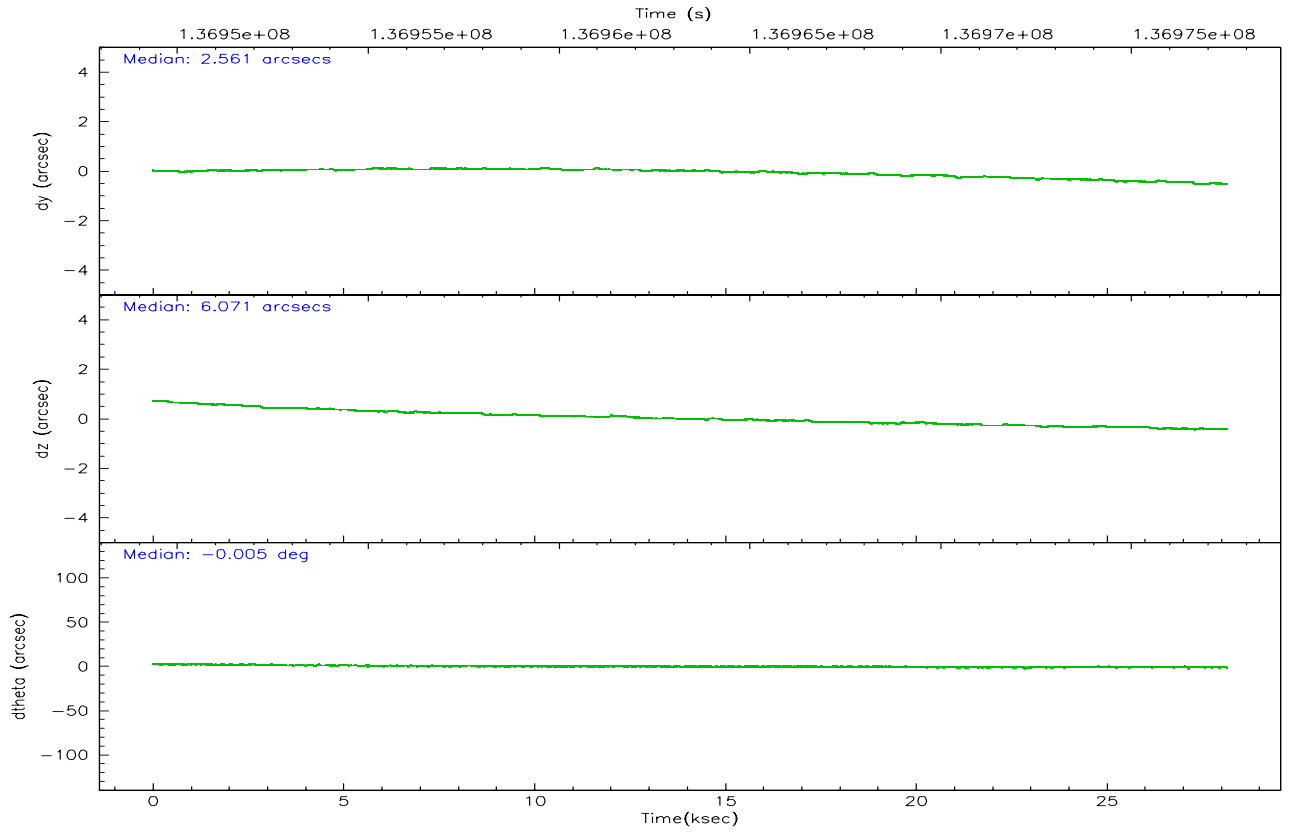
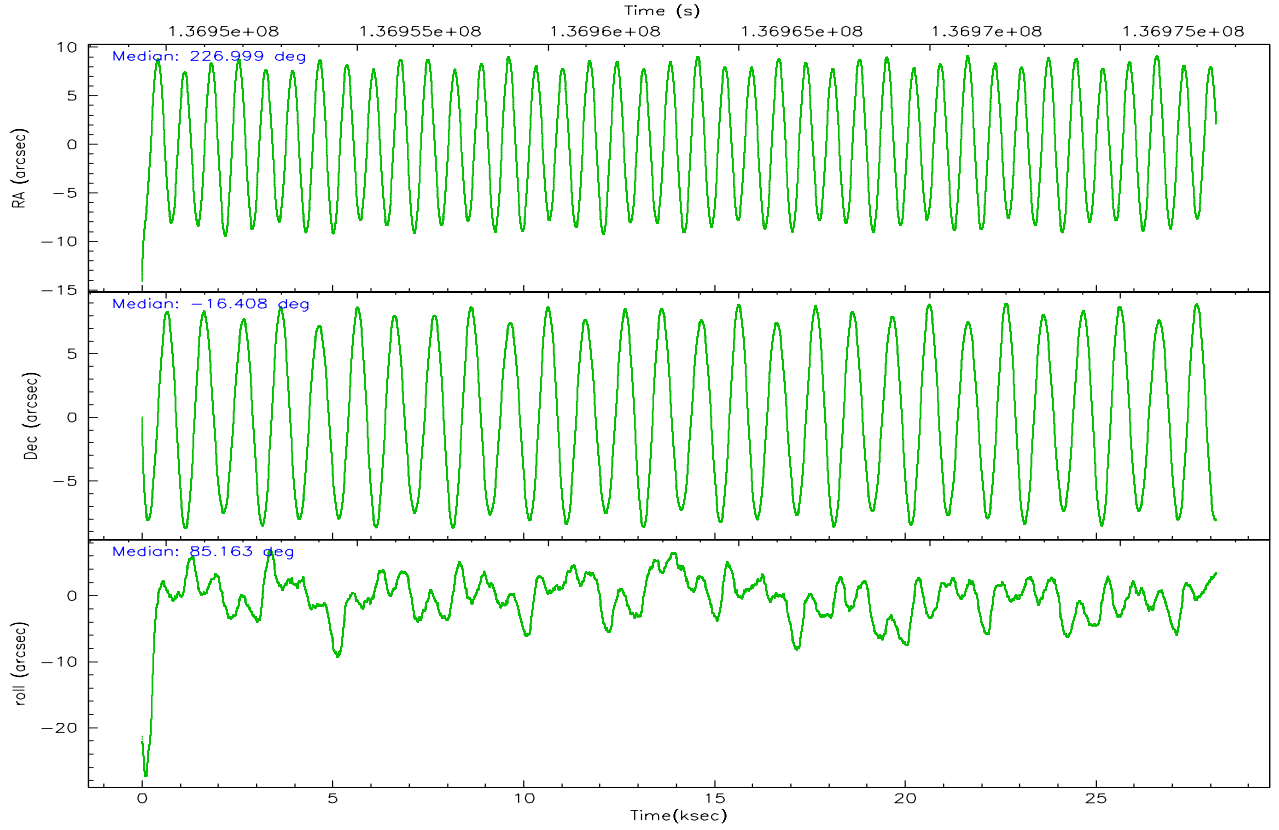
	ccd 2	ccd 3	ccd 5	ccd 6	ccd 7	ccd 8
grade 0 events	9254	9424	20355	9300	6121	15698
	4%	5%	7%	4%	2%	6%
grade 1 events	98	72	245	83	130	144
	0%	0%	0%	0%	0%	0%
grade 2 events	4818	4368	37550	4487	23361	10495
	2%	2%	13%	2%	9%	4%
grade 3 events	2009	2054	2793	2147	5057	5507
	1%	1%	1%	1%	2%	2%
grade 4 events	1940	2047	2624	2096	4750	4900
	1%	1%	0%	1%	1%	2%
grade 5 events	6484	7308	13086	7902	16190	10137
	3%	4%	4%	4%	6%	4%
grade 6 events	3829	3718	66570	4371	54880	12310
	1%	2%	23%	2%	22%	5%
grade 7 events	164904	150934	135858	156266	134025	172188
	85%	83%	48%	83%	54%	74%

2.2 Compared Parameters

Parameter	Planned	Actual	Parameter	Planned	Actual
Instrument	ACIS	ACIS	Obspar format version number	6	6
Detector	ACIS-235678	ACIS-235678	Obspar file type	PREDICTED	ACTUAL
Grating	NONE	NONE	Obspar update status	NONE	UPDATED
Data mode	FAINT	FAINT	Number of optional ACIS chips dropped	0	0
Observation mode	POINTING	POINTING	On-chip summing requested	N	N
Pointing RA	227.011385	226.9989792698602	Subarray requested	NONE	NONE
Pointing Dec	-16.432066	-16.4075695391343	Alternating exposures requested	N	N
Pointing Roll	85.017386	85.17050850113209	Primary exposure time	0.000000	3.2
Window start time	134265664.184000	134265664.184000			
Window stop time	139536064.184000	139536064.184000			
SIM focus pos (mm)	-0.684267	-0.6828225247311905			
SIM defocus (mm)	0	0.001444936568705701			
SIM translation stage pos (mm)	-190.132523	-190.1425803651734			
SIM translation stage offset (mm)	0	0.01005778216563158			
Observation start time	136949509.184000	136948498.60792			
Observation start date	2002-05-05T01:30:45	2002-05-05T01:14:58			
Observation end time	136977509.184000	136978141.09663			
Observation end date	2002-05-05T09:17:25	2002-05-05T09:29:01			
Read mode	TIMED	TIMED			

2.3 Aspect



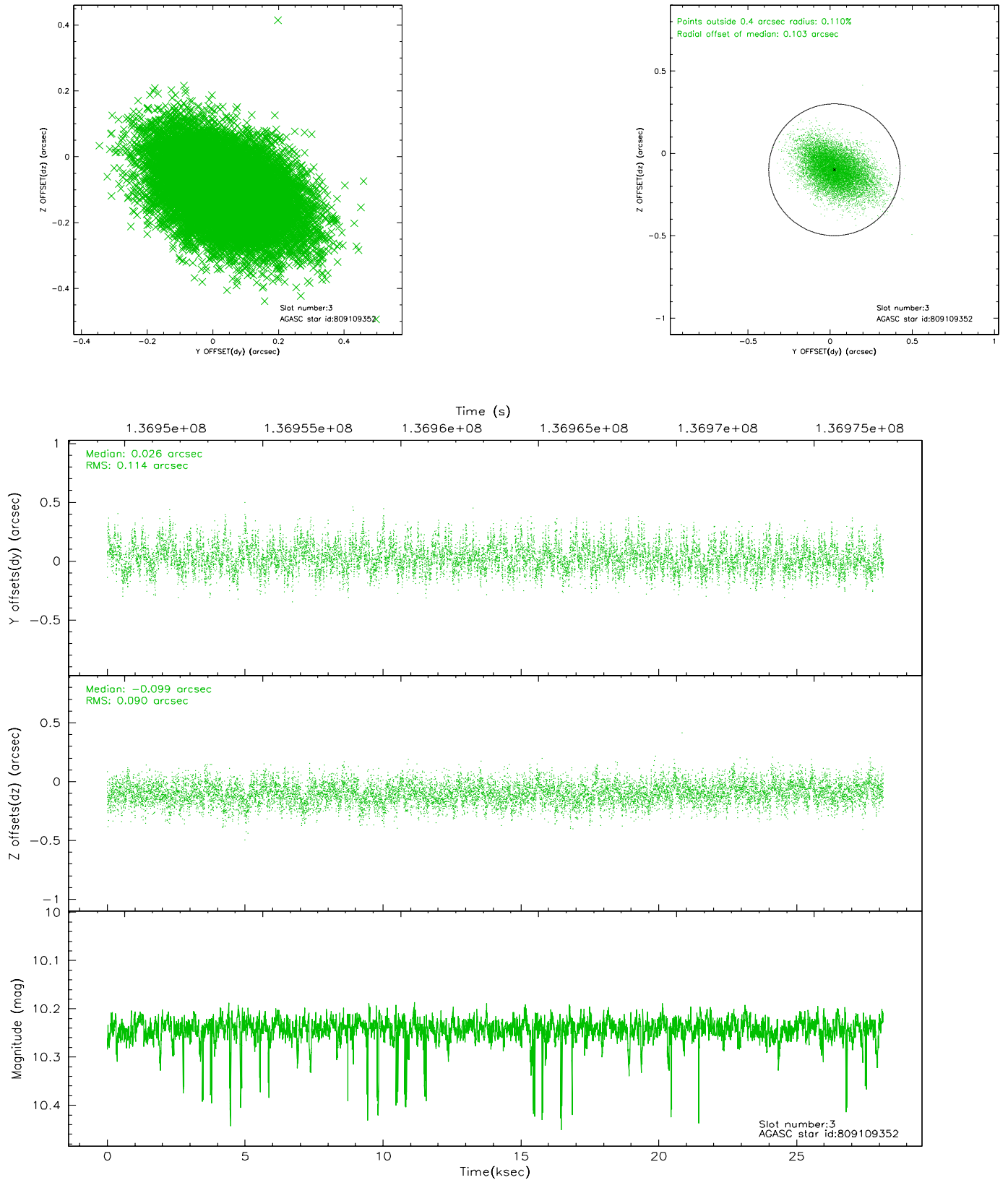


Slot Statistics

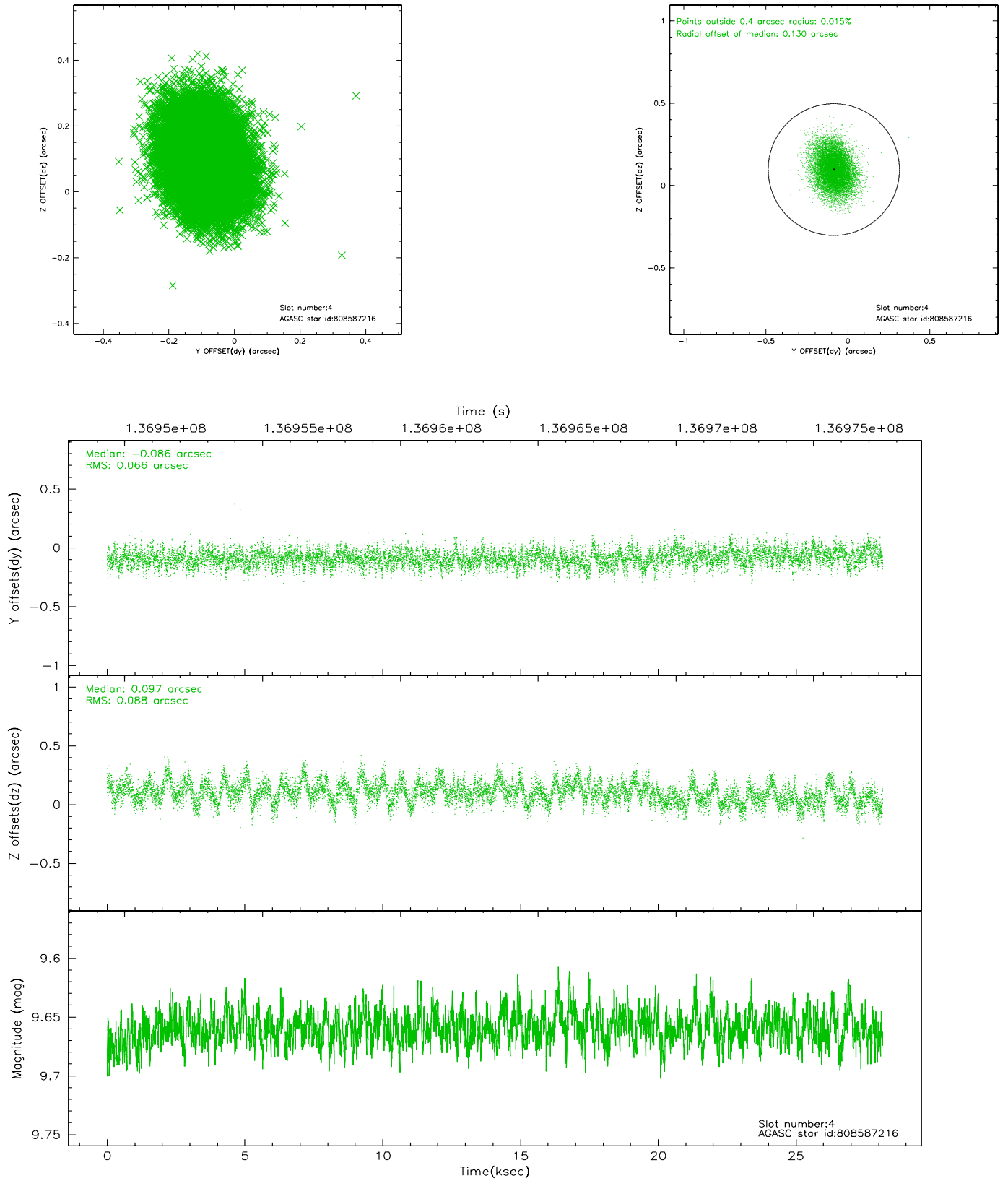
slot	status	id	mag	n_pts	med_dy	med_dz	dr1	dr2	ra	dec	mean_y	mean_z
0	FID	ACIS-S-2	7.11	6865	-0.026	0.033	0.014	0.025	0.000000	0.000000	-755.10	-1727.19
1	FID	ACIS-S-4	7.20	6863	-0.071	0.003	0.017	0.035	0.000000	0.000000	2158.06	181.24
2	FID	ACIS-S-5	7.24	6863	0.063	-0.028	0.009	0.017	0.000000	0.000000	-1807.78	174.89
3	GUIDE	809109352	10.24	13680	0.026	-0.099	0.152	0.257	226.344008	-16.984618	-2185.21	2115.22
4	GUIDE	808587216	9.66	13721	-0.086	0.097	0.117	0.192	227.577621	-16.256842	795.83	-1895.10
5	GUIDE	808589560	9.42	13722	-0.058	-0.008	0.112	0.183	226.678401	-16.142069	939.16	1237.33
6	GUIDE	808593688	6.80	13731	-0.022	0.009	0.076	0.123	226.704420	-16.484361	-280.36	1038.95
7	GUIDE	809117864	9.40	13730	0.125	-0.004	0.092	0.150	226.614361	-17.063476	-2384.41	1163.05

2.4 Star Slots

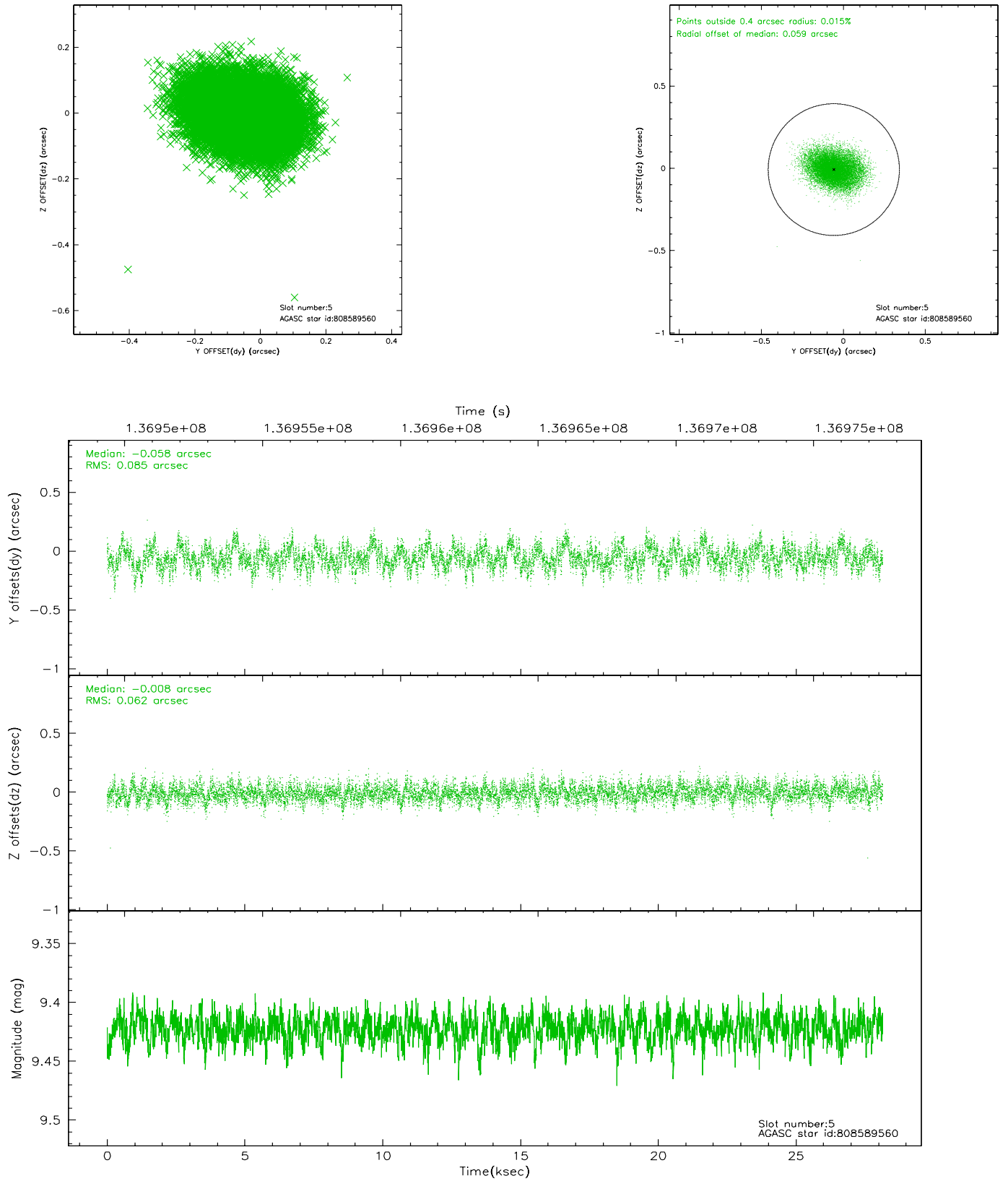
2.4.1 Slot 3



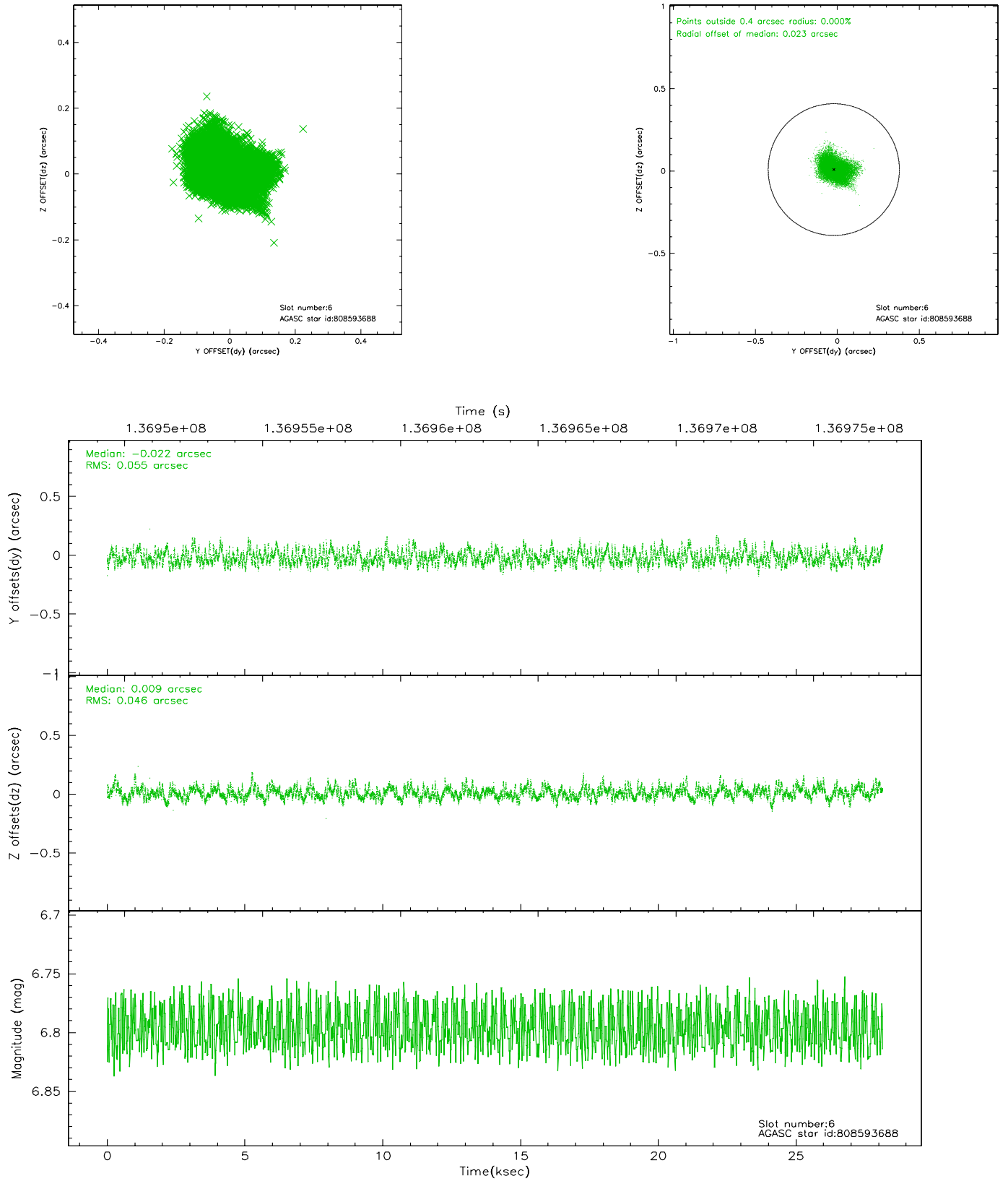
2.4.2 Slot 4



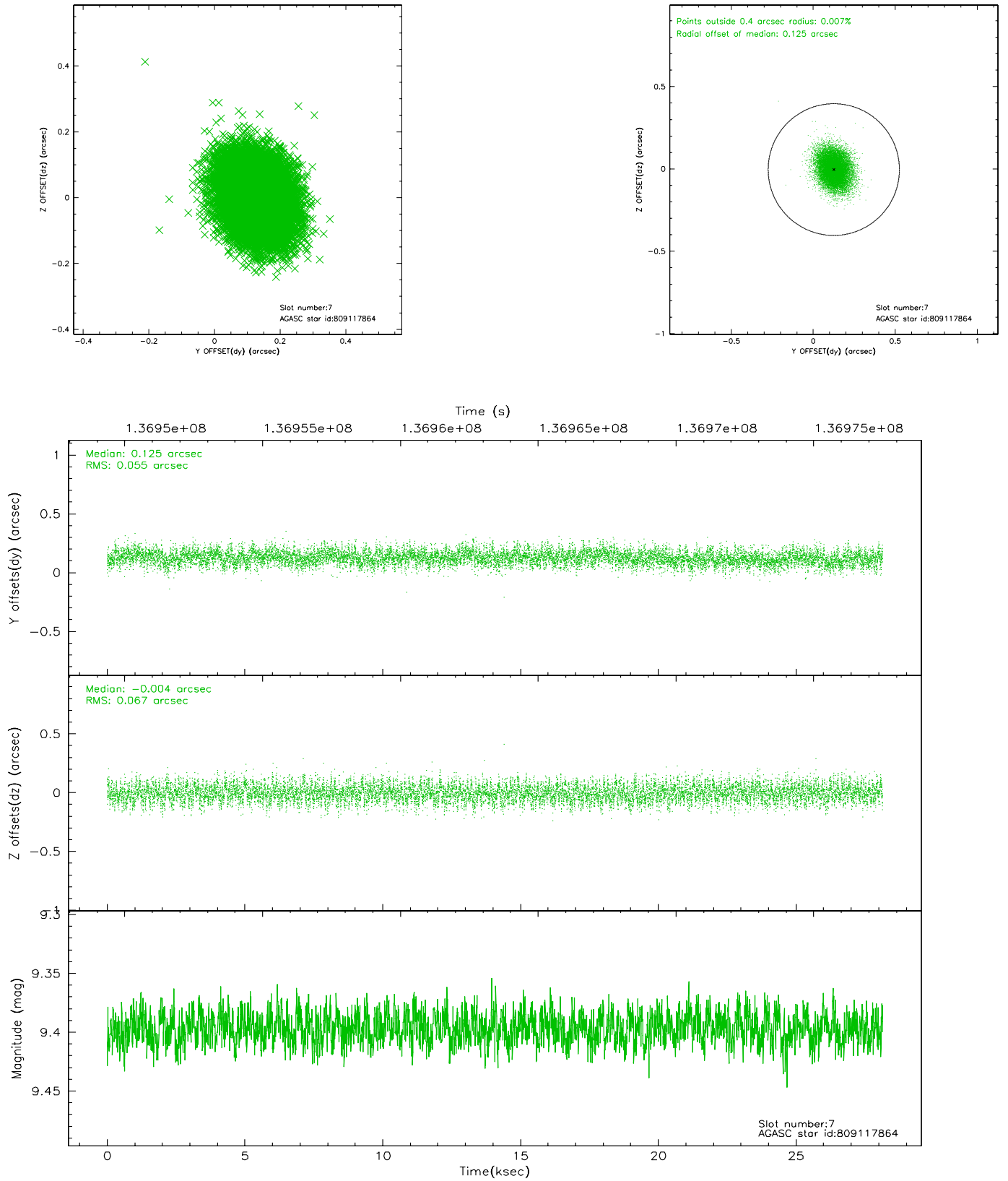
2.4.3 Slot 5



2.4.4 Slot 6

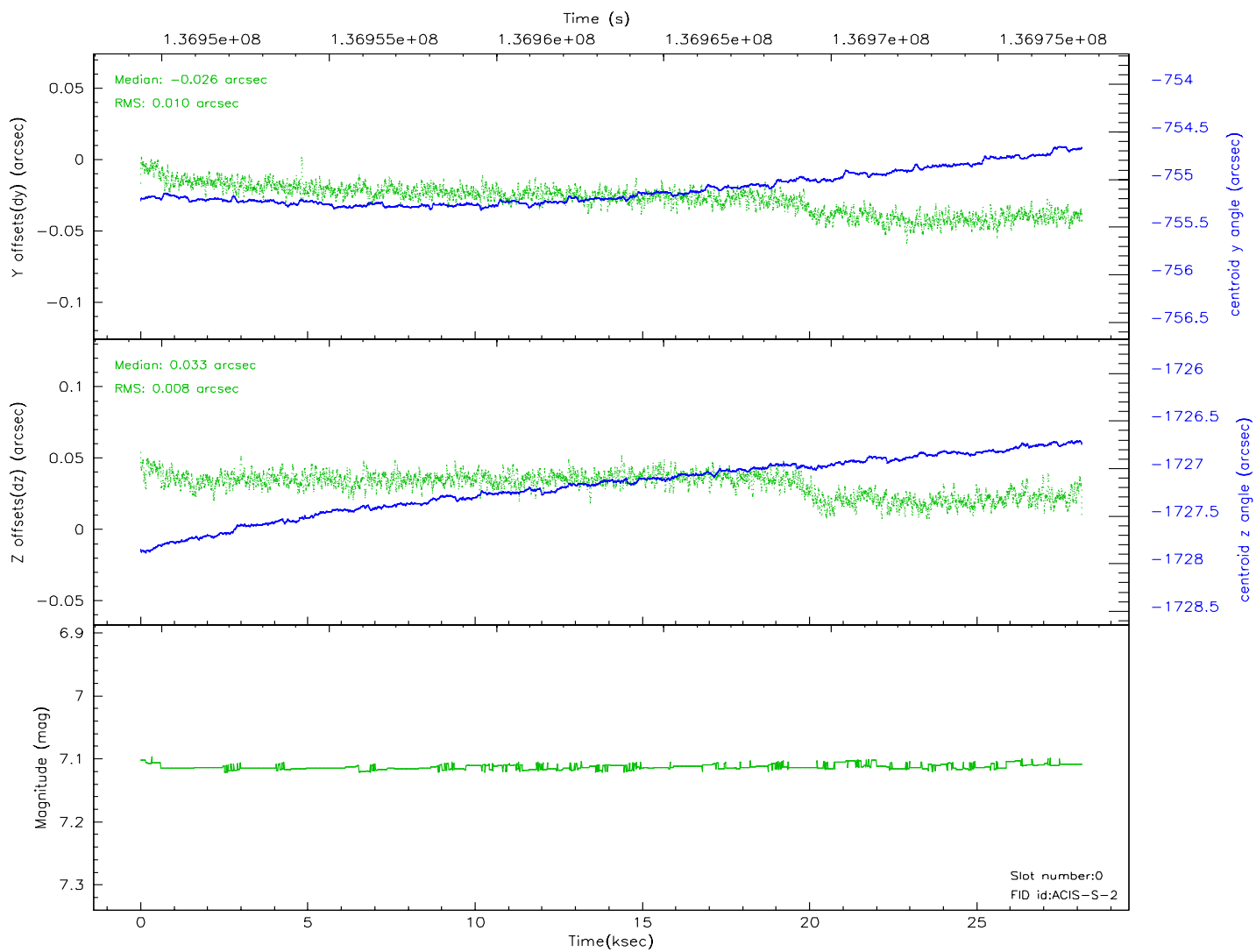
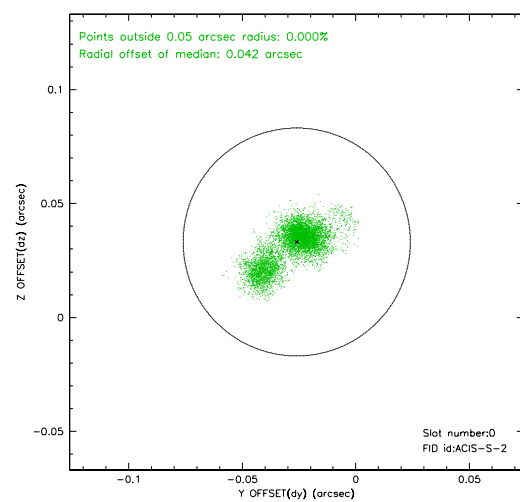
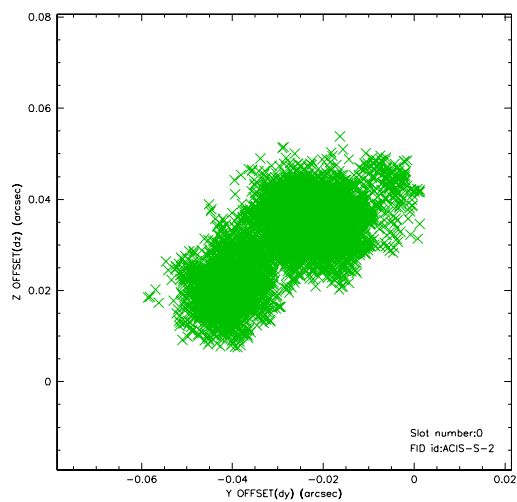


2.4.5 Slot 7

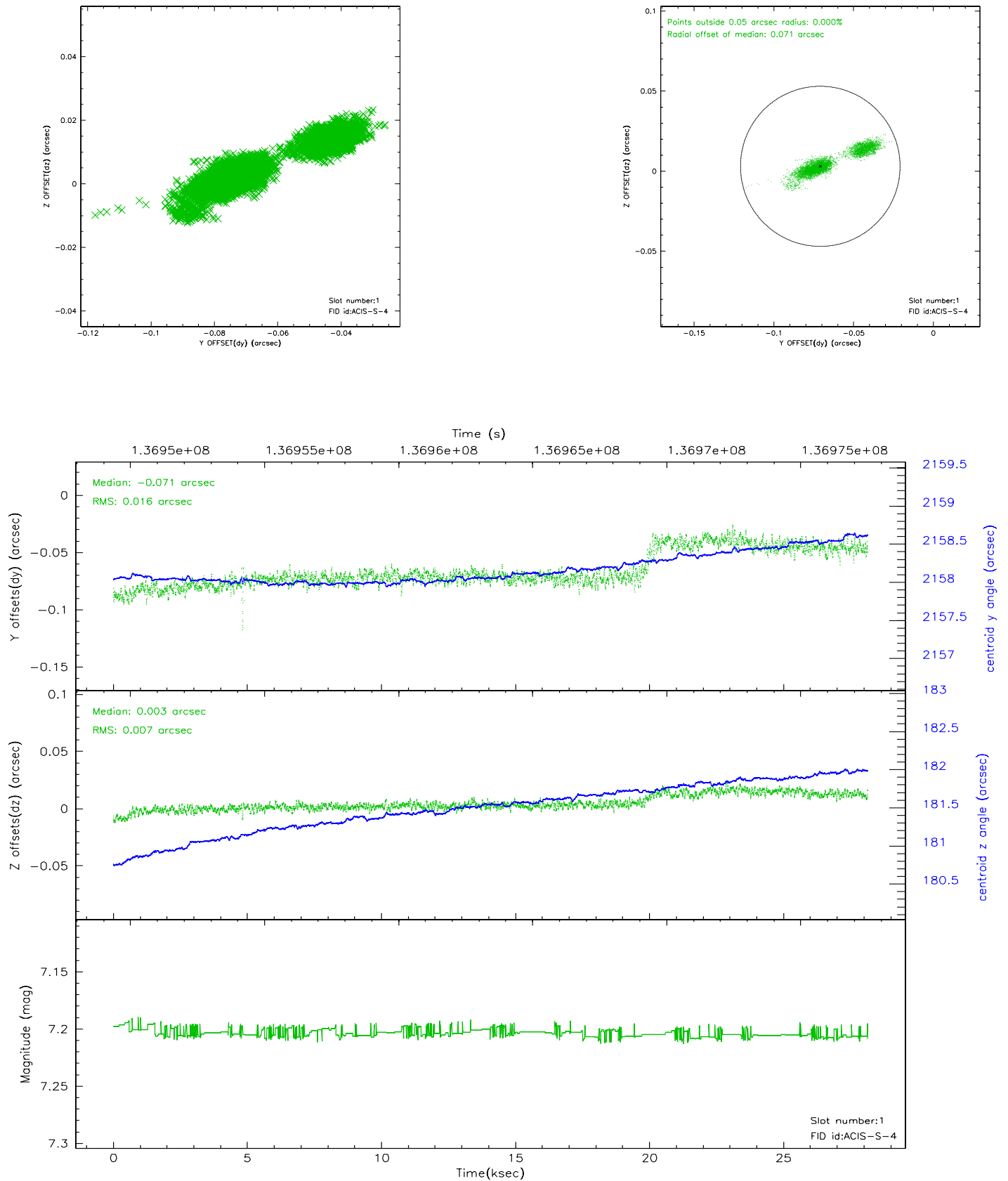


2.5 FID Slots

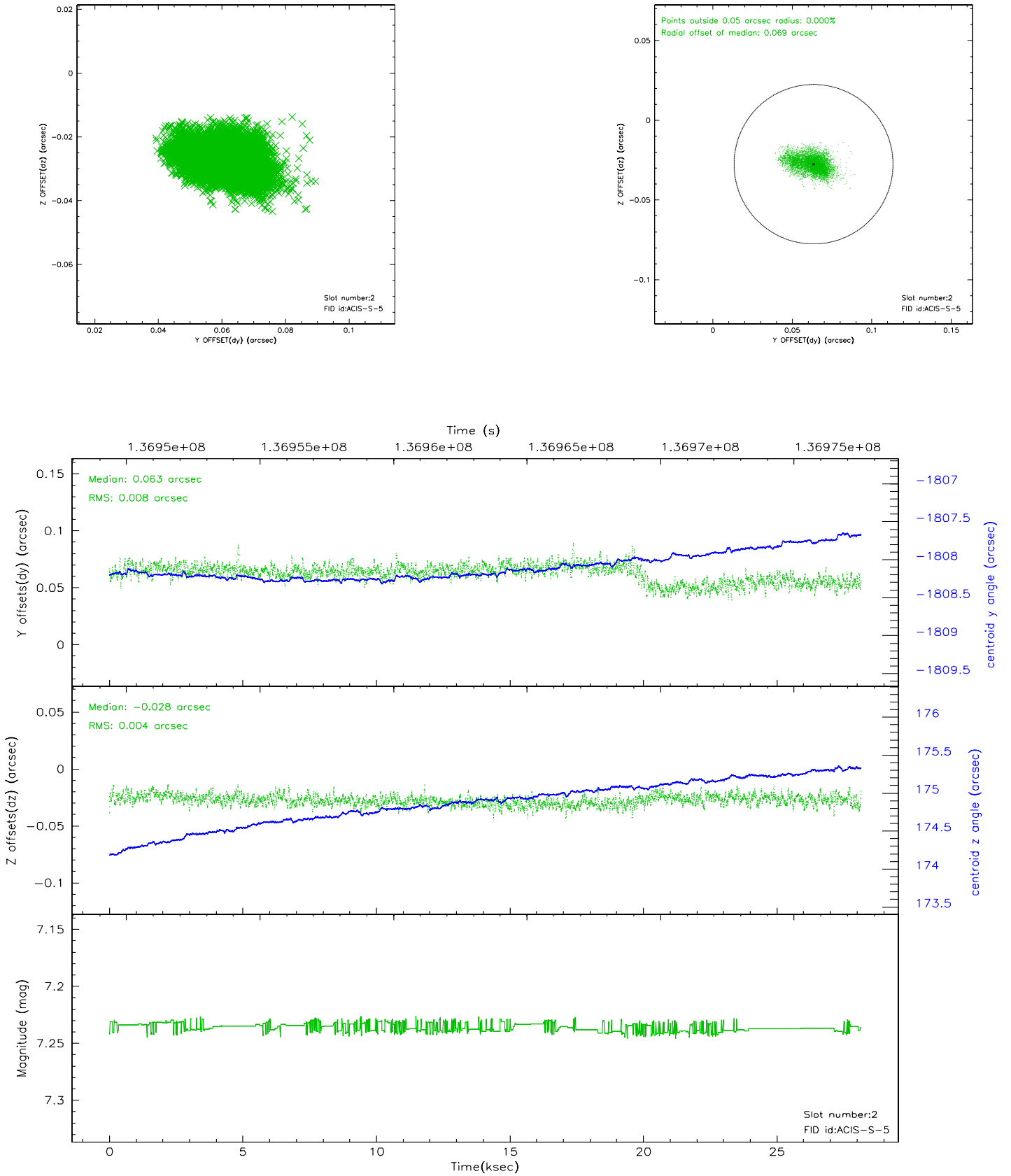
2.5.1 Slot 0



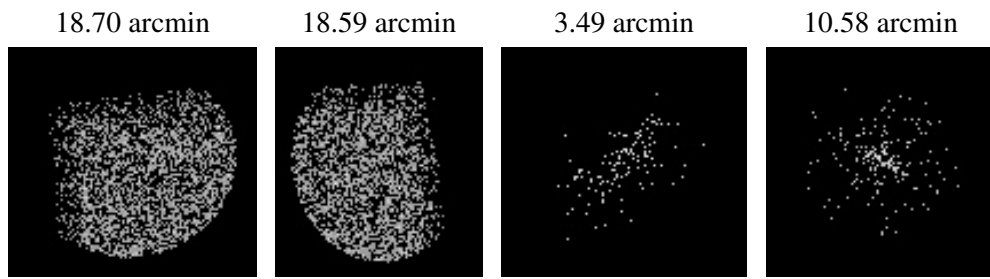
2.5.2 Slot 1



2.5.3 Slot 2



3 Point Sources



A Summary

A.1 Status

V&V Scientist	Jen Lauer
V&V Date (YYYY-MM-DD)	2006.09.18
V&V Edition	1
V&V Disposition and Status	OK
V&V Charge Time	28.061

A.2 Comments

Window constraint met.