

V&V Reference Report

L2 ASCDS Version : 7.6.9

Observation 2392 - L2 Version 001
Chandra X-Ray Center

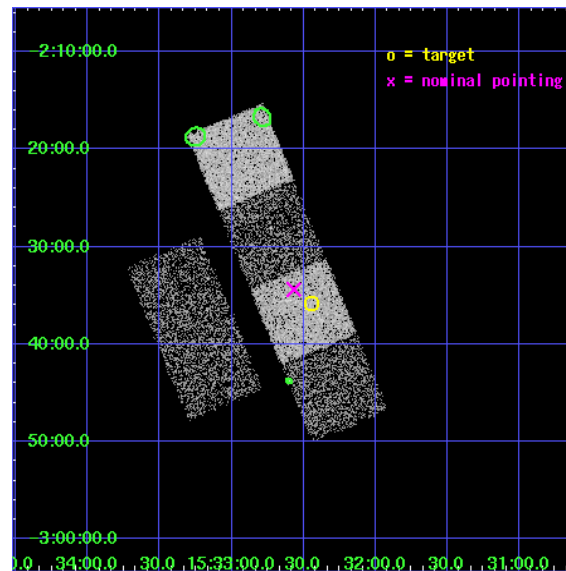
L2 Processing Date : Nov 2 2006

Contents

1	Front	2
2	OBI	3
2.1	OBI	3
2.1.1	Images	3
2.1.2	Bias	3
2.1.3	Parameters	4
2.1.4	Events	4
2.2	Compared Parameters	5
2.3	Aspect	6
2.4	Star Slots	9
2.4.1	Slot 3	9
2.4.2	Slot 4	10
2.4.3	Slot 5	11
2.4.4	Slot 6	12
2.4.5	Slot 7	13
2.5	FID Slots	14
2.5.1	Slot 0	14
2.5.2	Slot 1	15
2.5.3	Slot 2	16
3	Point Sources	17
A	Summary	18
A.1	Status	18
A.2	Comments	18

1 Front

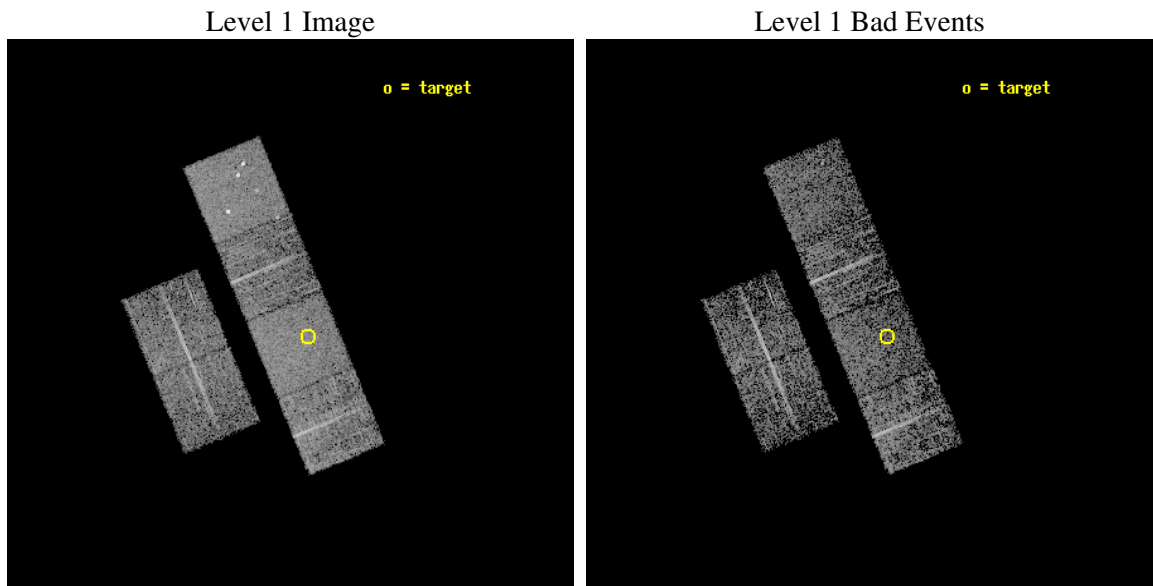
seq_num	100021
obs_id	2392
title	X-RAY SPECTROSCOPY OF COMET C/1999 T1
observer	Dr. Vladimir Krasnopolsky
object	C/1999 T1
dtcycle	0
cycle	P
ra_targ	233.11164
dec_targ	-2.59748
ra_nom	233.14184573494
dec_nom	-2.5729517459259
roll_nom	67.497522387417
revision	2
ontime	3395.200003162
livetime	3352.207936378
ontime2	3395.200003162
ontime3	3395.200003162
ontime5	3395.200003162
ontime6	3395.200003162
ontime7	3395.200003162
ontime8	3395.200003162
l2events	32914



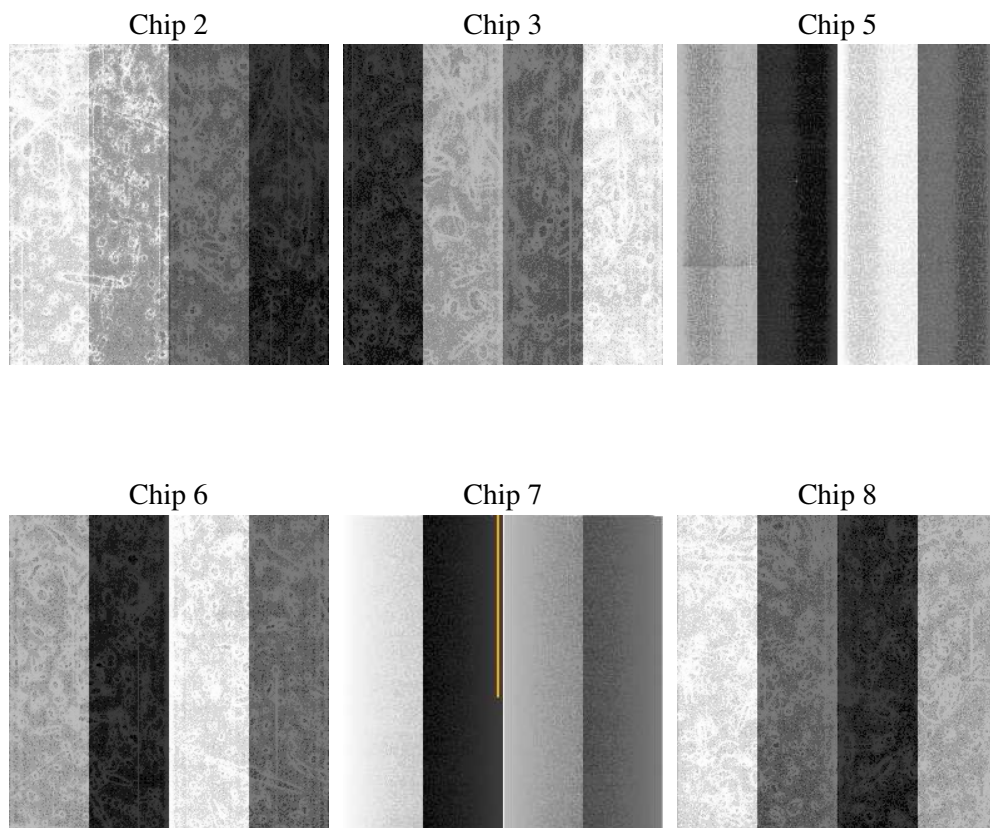
2 OBI

2.1 OBI

2.1.1 Images



2.1.2 Bias



2.1.3 Parameters

obi_num	0
ascdsver	7.6.9
caldsver	3.2.3
date	2006-11-02T21:04:37
revision	2

sched_exp_time	3400.000000
ontime	3399.805240646
ontime2	3399.805240646
ontime3	3399.805240646
ontime5	3399.805240646
ontime6	3399.805240646
ontime7	3399.805240646
ontime8	3399.805240646
llevents	146467

2.1.4 Events

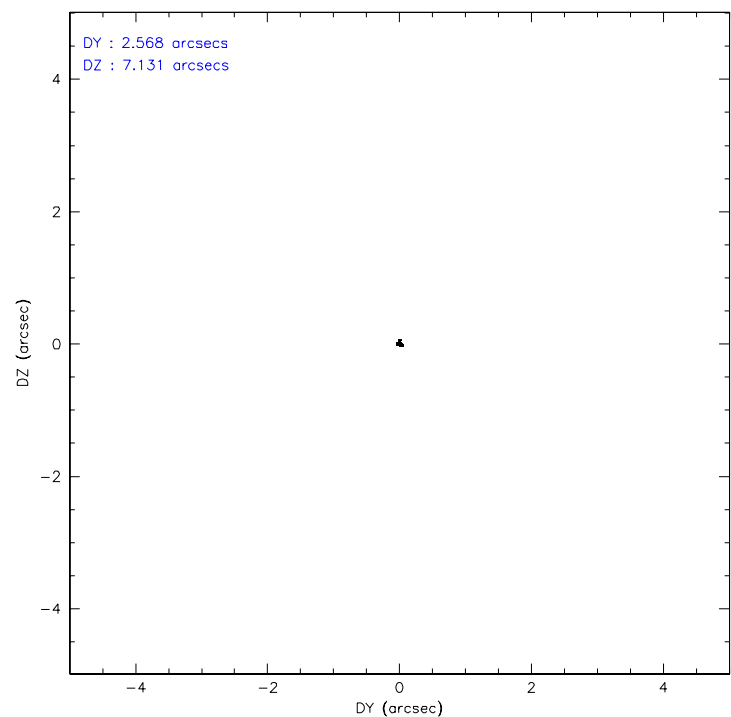
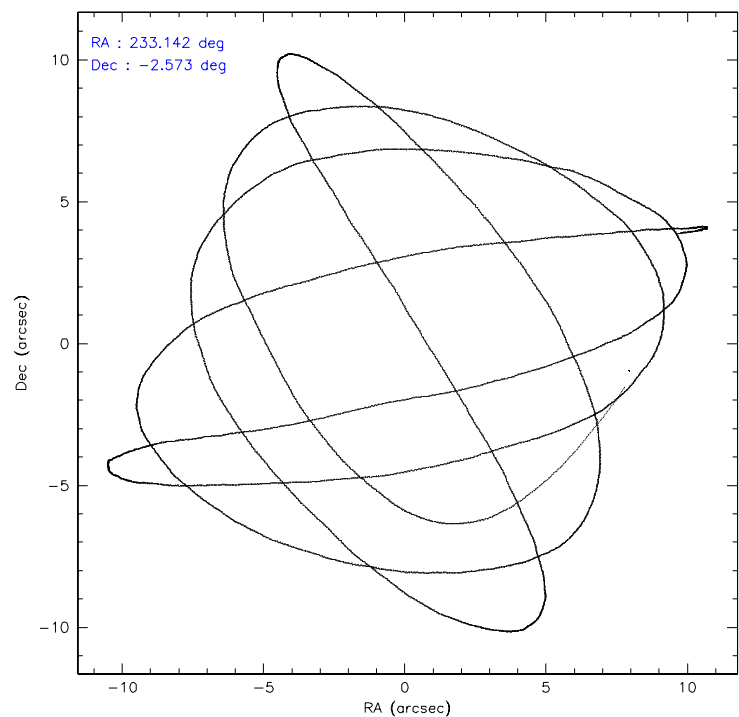
	ccd 2	ccd 3	ccd 5	ccd 6	ccd 7	ccd 8
level 1 events	21245	19301	30853	21193	27139	26736
rejected events	18504	16751	16067	18330	16109	20870
rejected %	87%	86%	52%	86%	59%	78%

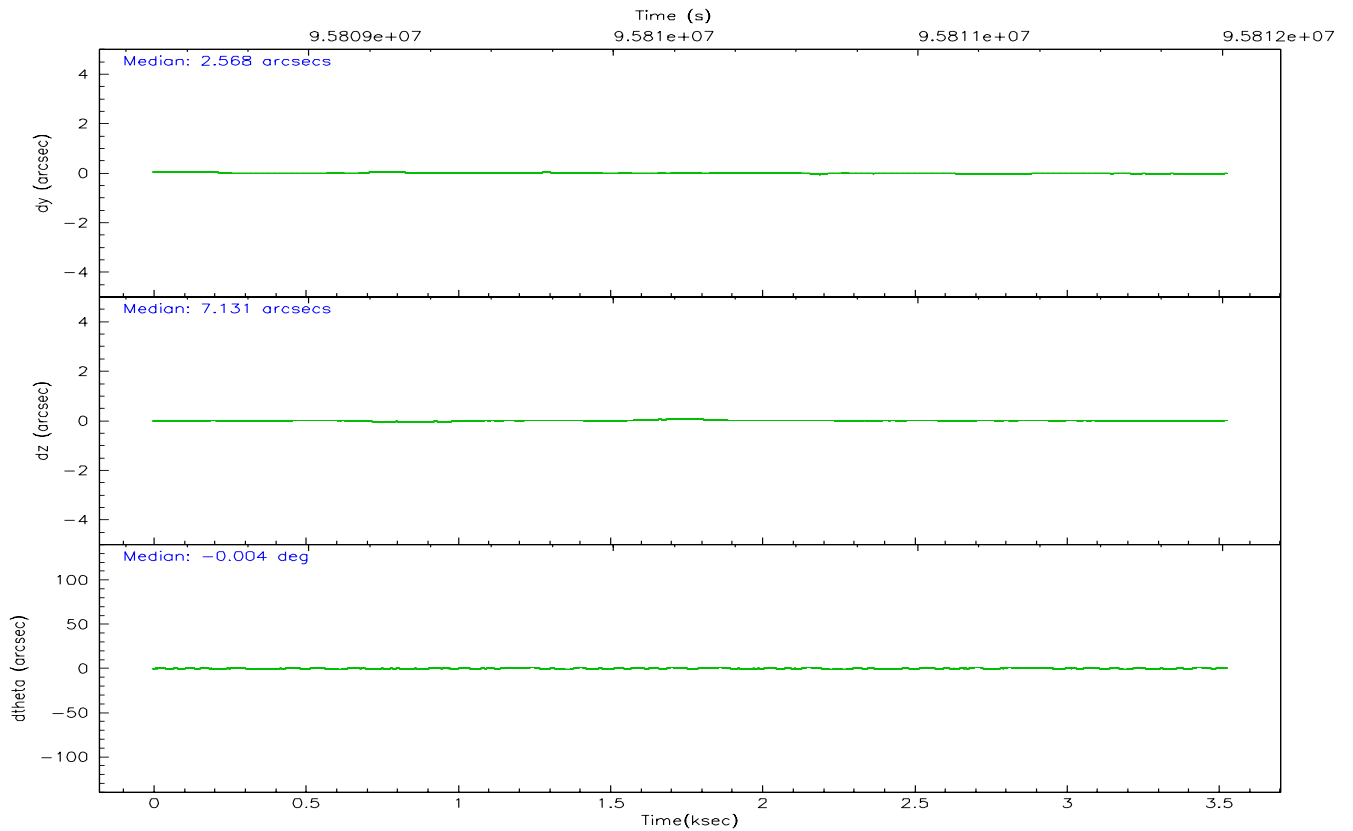
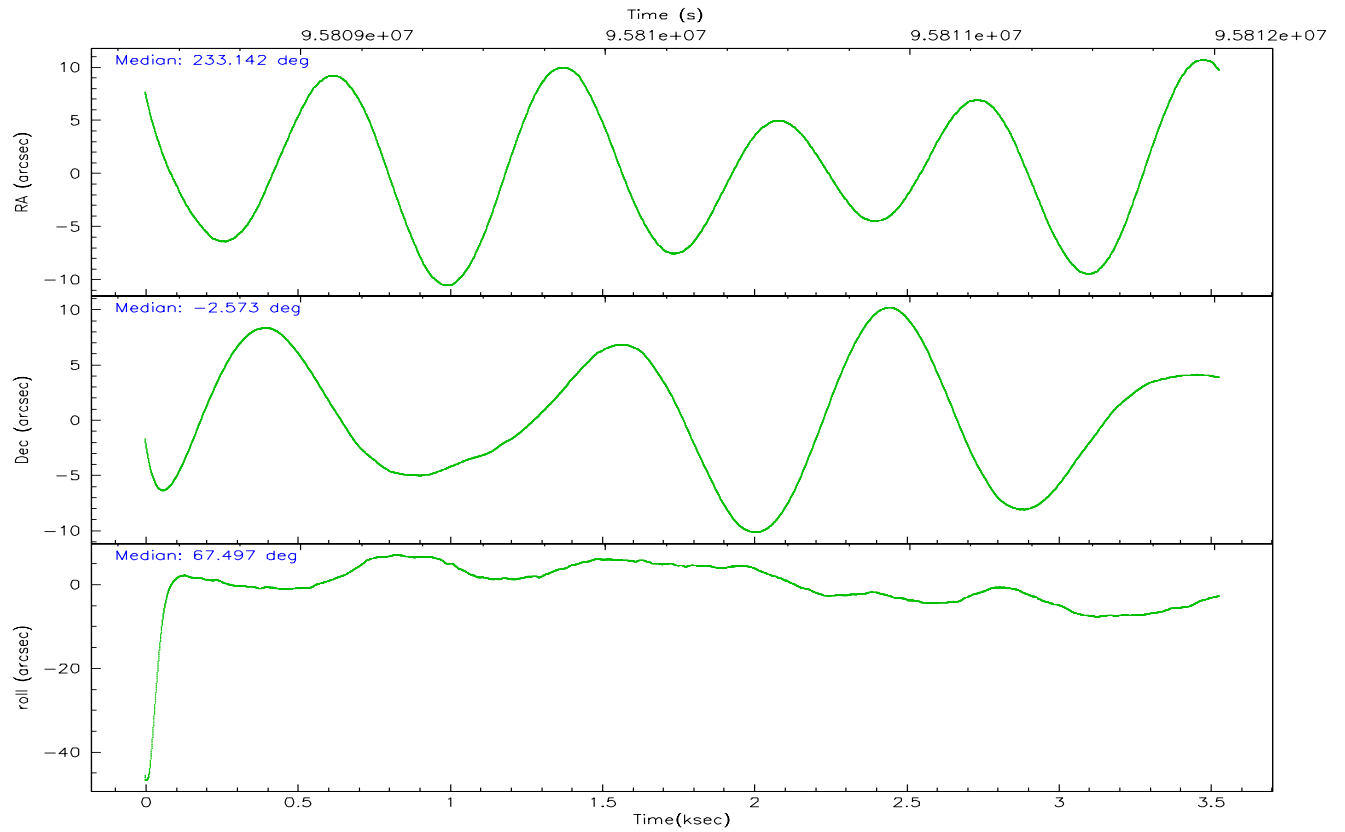
	ccd 2	ccd 3	ccd 5	ccd 6	ccd 7	ccd 8
grade 0 events	1247	1141	2306	1280	1055	2027
	5%	5%	7%	6%	3%	7%
grade 1 events	8	10	32	12	15	16
	0%	0%	0%	0%	0%	0%
grade 2 events	591	509	4512	619	2664	1252
	2%	2%	14%	2%	9%	4%
grade 3 events	236	219	290	251	591	645
	1%	1%	0%	1%	2%	2%
grade 4 events	207	230	298	229	596	587
	0%	1%	0%	1%	2%	2%
grade 5 events	688	799	1382	889	1765	1084
	3%	4%	4%	4%	6%	4%
grade 6 events	461	453	7394	485	6132	1361
	2%	2%	23%	2%	22%	5%
grade 7 events	17807	15940	14639	17428	14321	19764
	83%	82%	47%	82%	52%	73%

2.2 Compared Parameters

Parameter	Planned	Actual	Parameter	Planned	Actual
Instrument	ACIS	ACIS	Obspar format version number	6	6
Detector	ACIS-235678	ACIS-235678	Obspar file type	PREDICTED	ACTUAL
Grating	NONE	NONE	Obspar update status	NONE	UPDATED
Data mode	FAINT	FAINT	Number of optional ACIS chips dropped	0	0
Observation mode	POINTING	POINTING	On-chip summing requested	N	N
Pointing RA	233.145623	233.1418457349439	Subarray requested	NONE	NONE
Pointing Dec	-2.600095	-2.572951745925864	Alternating exposures requested	N	N
Pointing Roll	67.341280	67.49752238741701	Primary exposure time	0.000000	3.2
SIM focus pos (mm)	-0.684267	-0.6828225247311905			
SIM defocus (mm)	0	0.001444936568705701			
SIM translation stage pos (mm)	-190.132523	-190.1425803651734			
SIM translation stage offset (mm)	0	0.01005778216563158			
Observation start time	95808615.184000	95807633.793965			
Observation start date	2001-01-13T21:29:11	2001-01-13T21:13:53			
Observation end time	95812015.184000	95812634.256657			
Observation end date	2001-01-13T22:25:51	2001-01-13T22:37:14			
Read mode	TIMED	TIMED			

2.3 Aspect



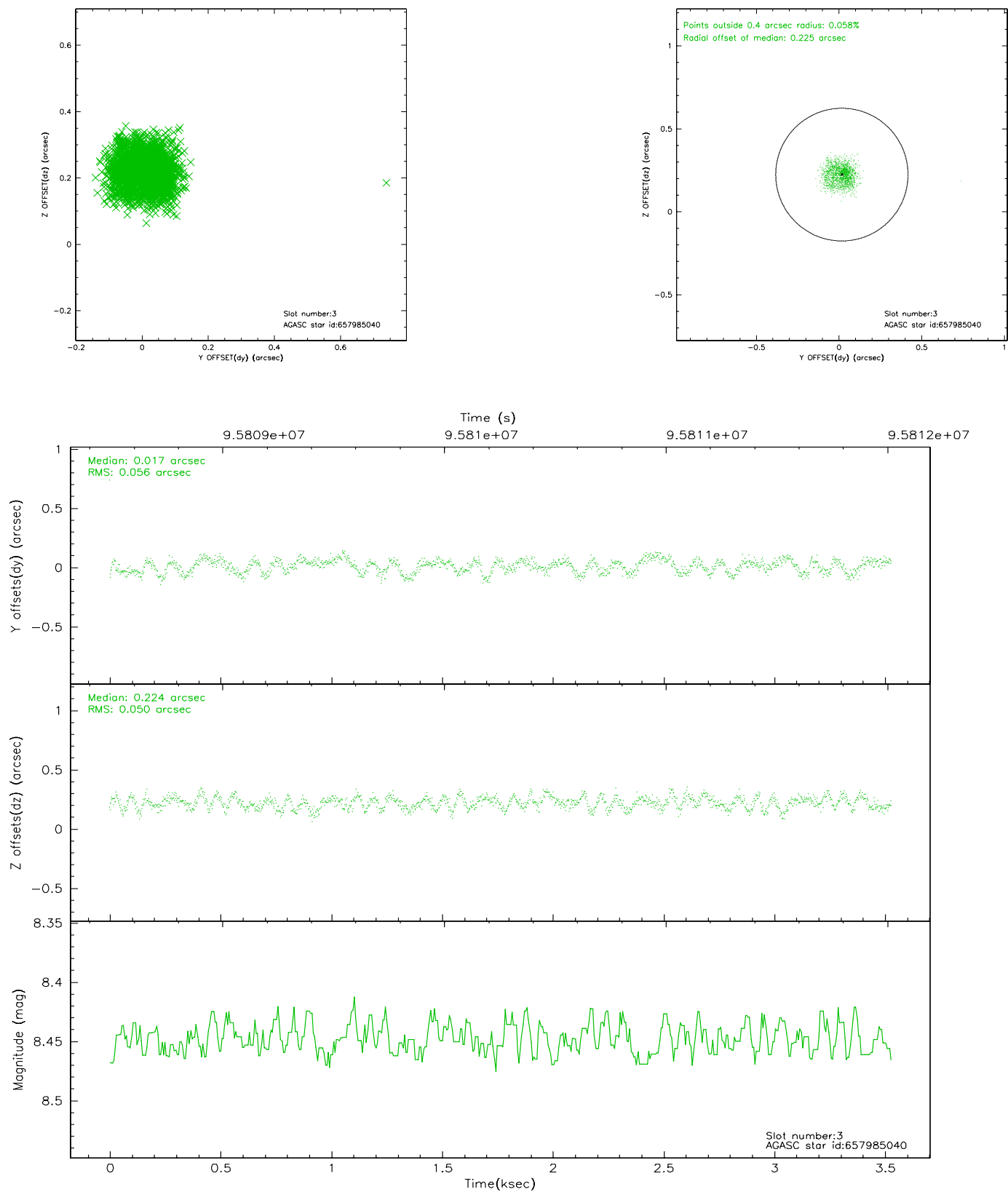


Slot Statistics

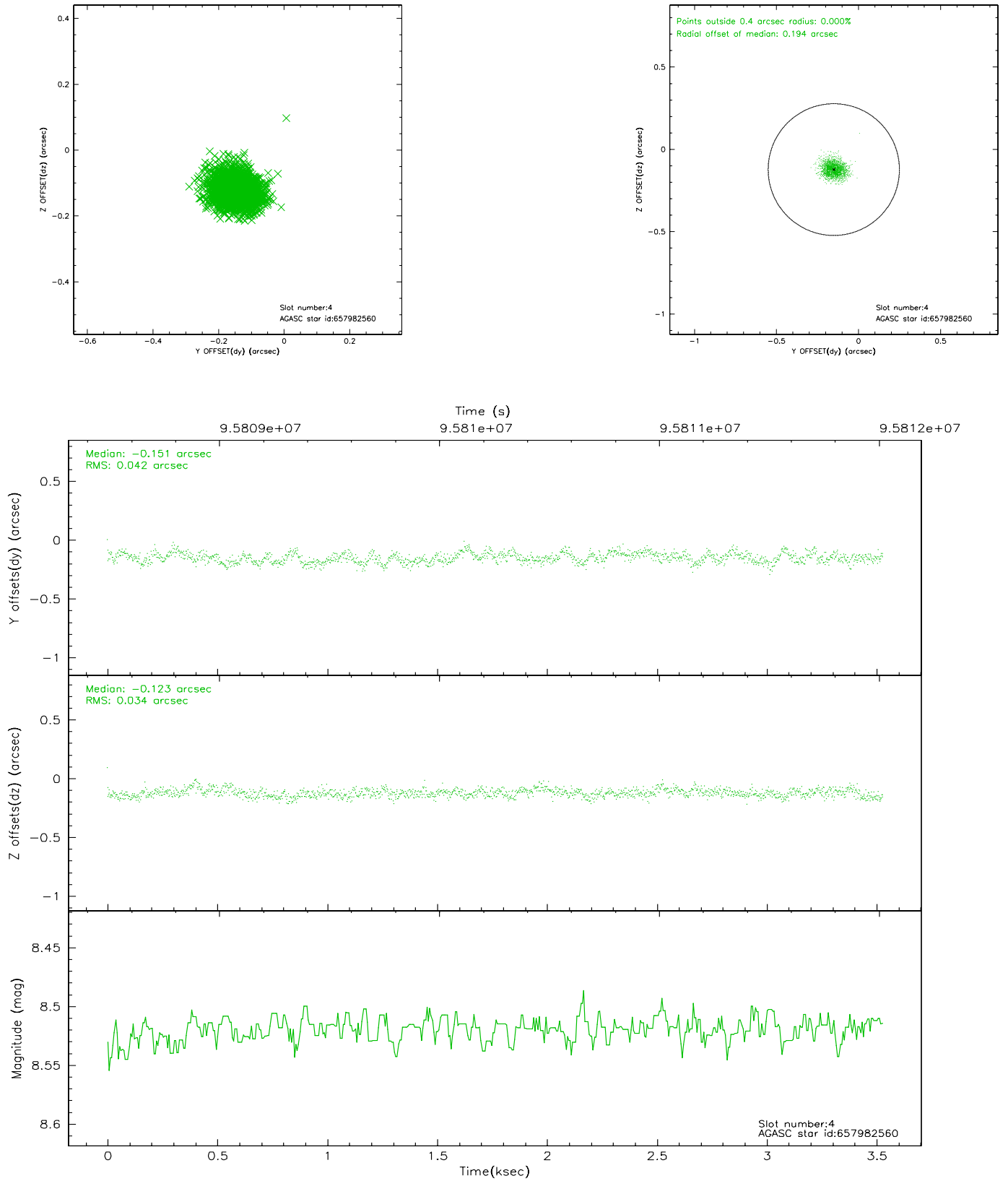
slot	status	id	mag	n_pts	med_dy	med_dz	dr1	dr2	ra	dec	mean_y	mean_z
0	FID	ACIS-S-2	7.11	861	0.002	0.026	0.006	0.011	0.000000	0.000000	-755.21	-1728.22
1	FID	ACIS-S-4	7.20	860	-0.074	-0.008	0.005	0.009	0.000000	0.000000	2157.20	178.36
2	FID	ACIS-S-5	7.24	860	0.041	-0.010	0.007	0.011	0.000000	0.000000	-1805.69	174.10
3	GUIDE	657985040	8.45	1721	0.017	0.224	0.080	0.120	233.629977	-2.941705	-463.82	-2081.26
4	GUIDE	657982560	8.52	1722	-0.151	-0.123	0.057	0.093	232.953842	-2.066441	1507.06	1374.99
5	GUIDE	657982888	8.64	1721	-0.226	0.180	0.054	0.090	233.405373	-2.294778	1375.34	-438.44
6	GUIDE	657984056	9.58	1719	0.144	-0.026	0.088	0.143	232.878549	-2.721271	-771.19	717.27
7	GUIDE	656277584	9.97	1721	0.224	-0.253	0.131	0.215	232.453530	-2.825604	-1708.29	1983.01

2.4 Star Slots

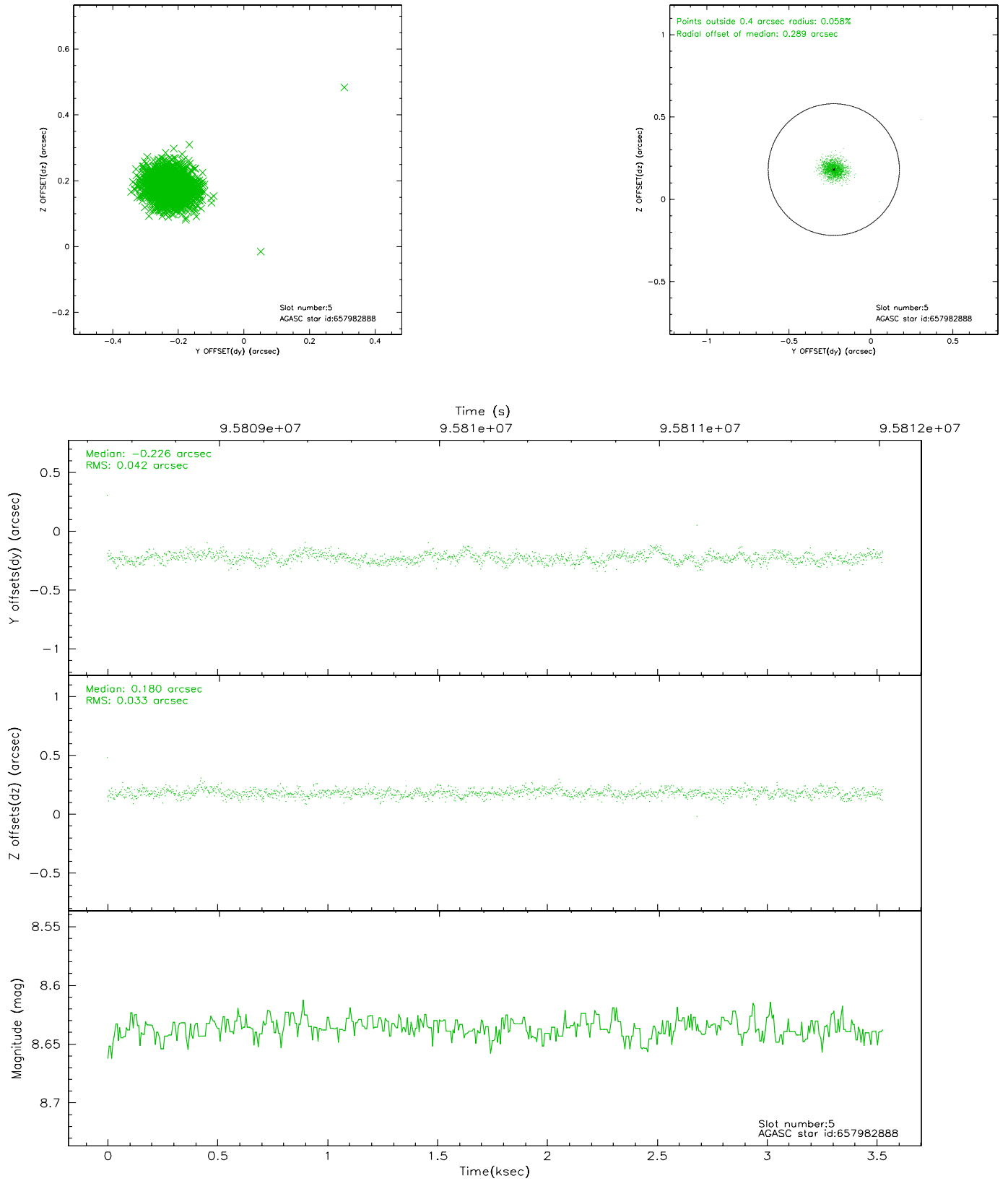
2.4.1 Slot 3



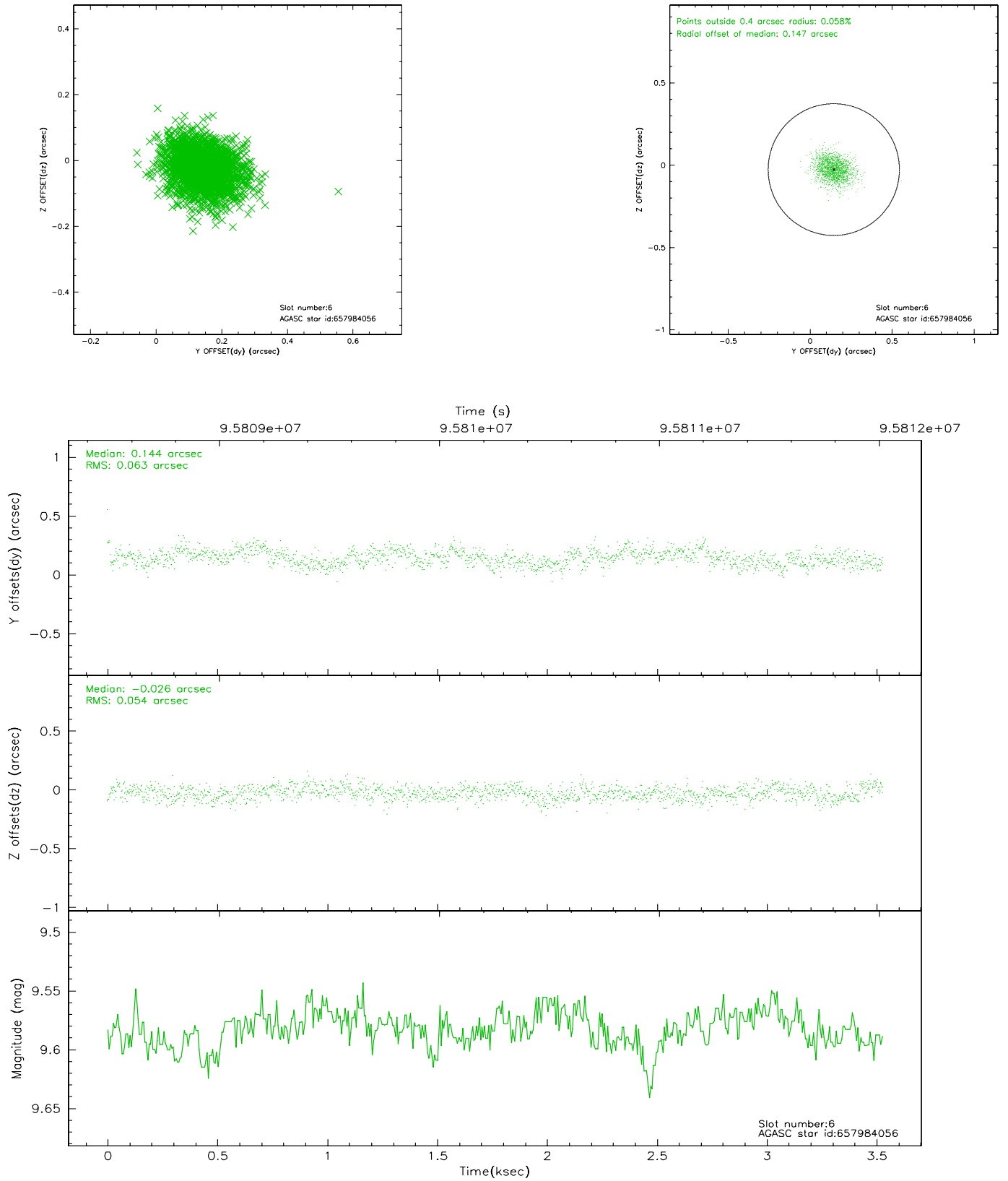
2.4.2 Slot 4



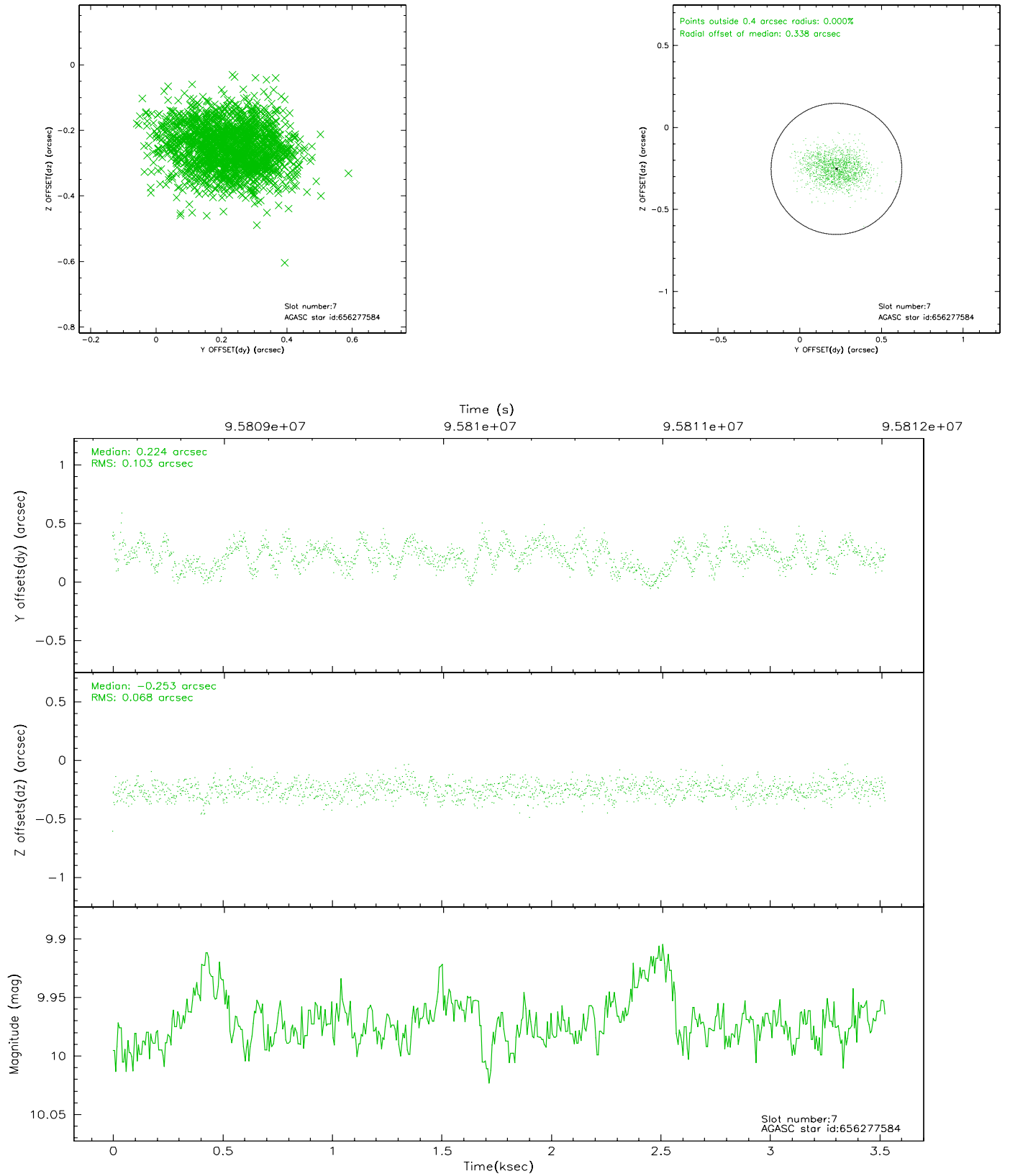
2.4.3 Slot 5



2.4.4 Slot 6

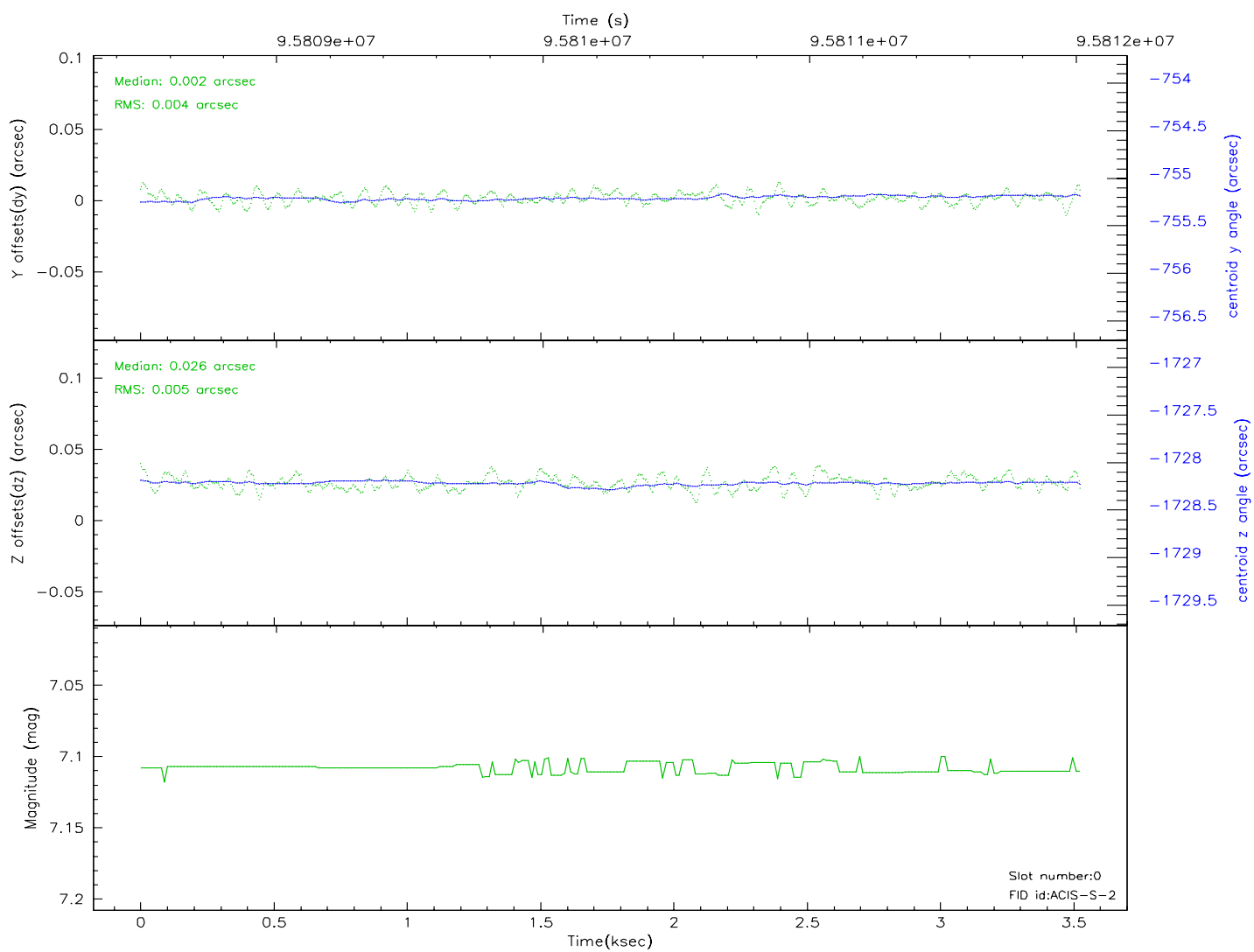
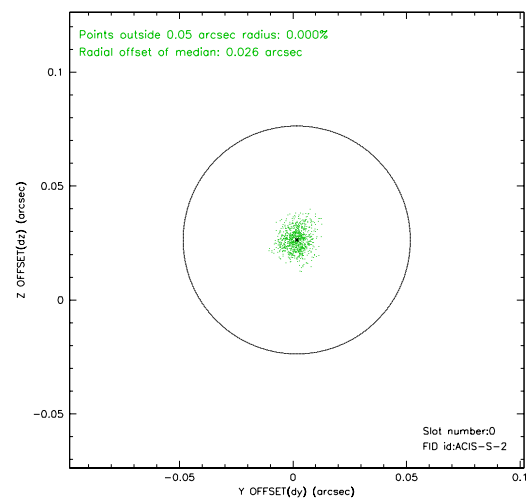
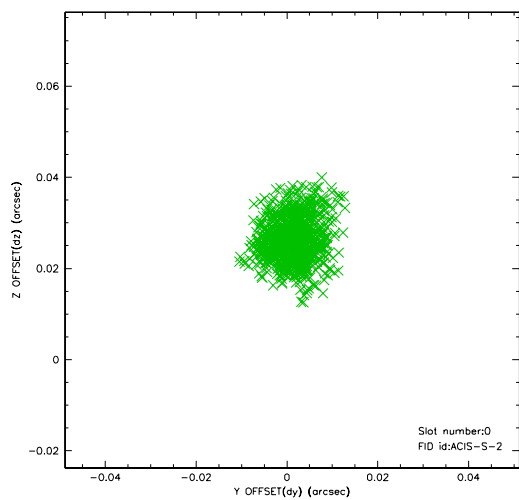


2.4.5 Slot 7

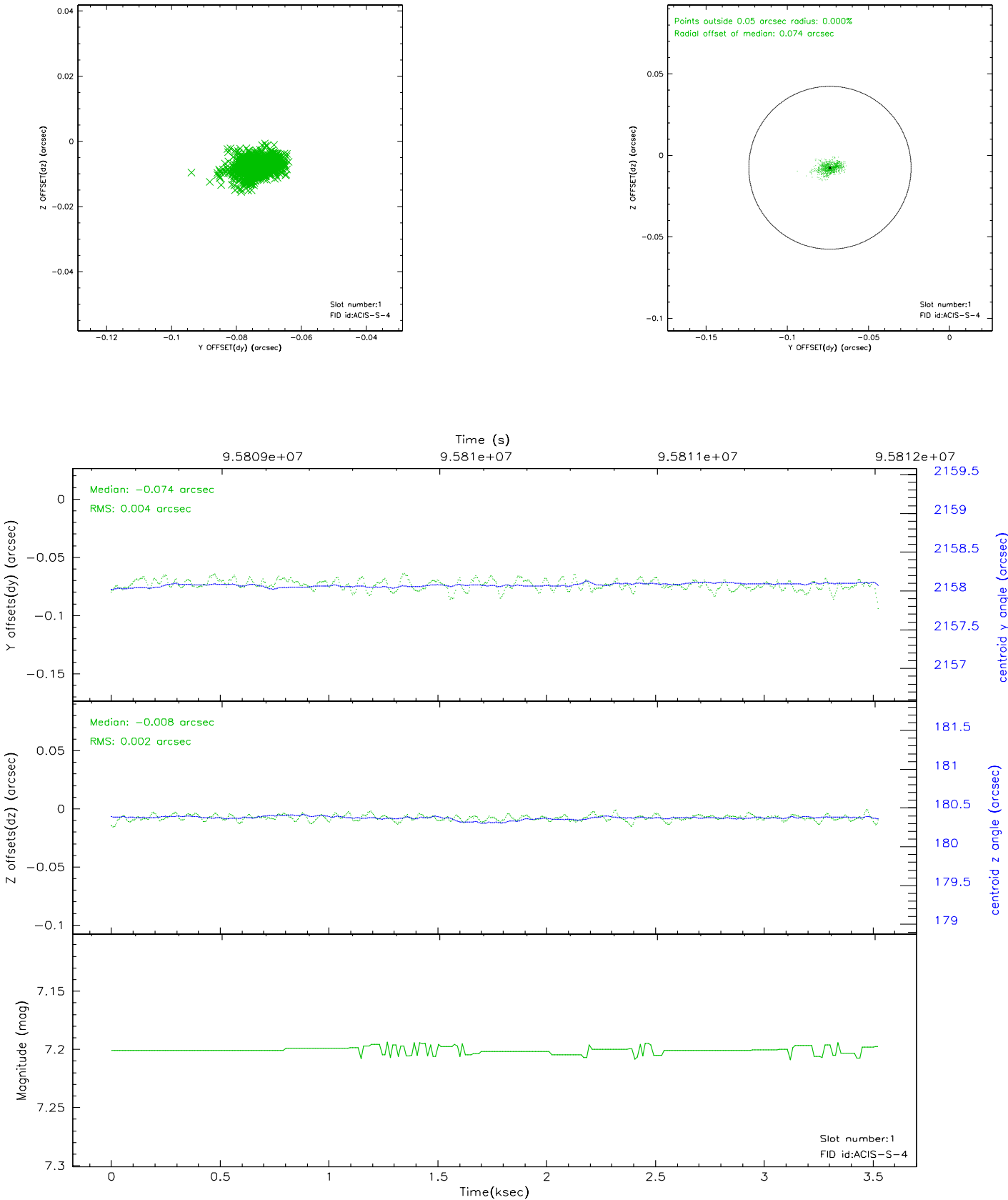


2.5 FID Slots

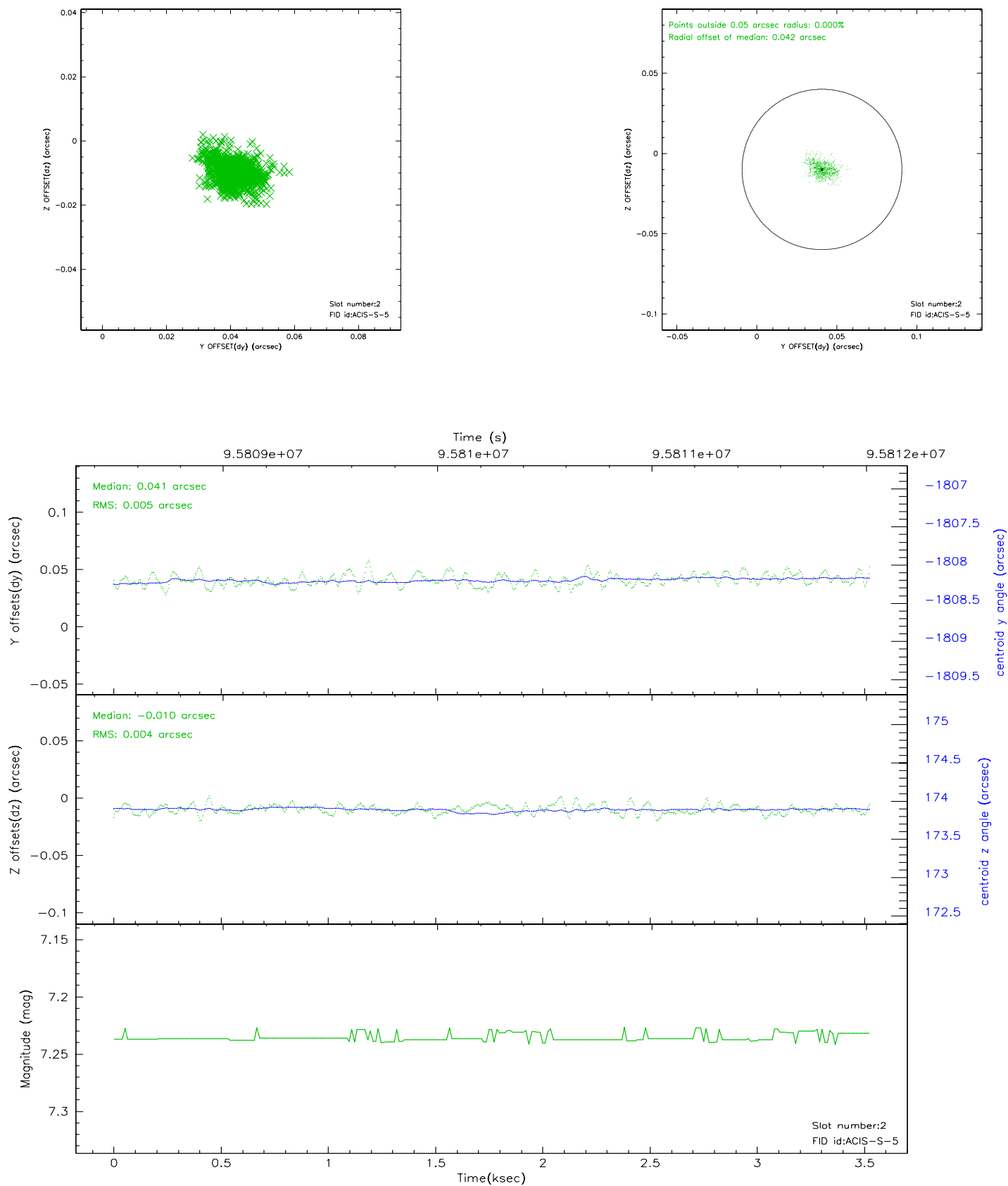
2.5.1 Slot 0



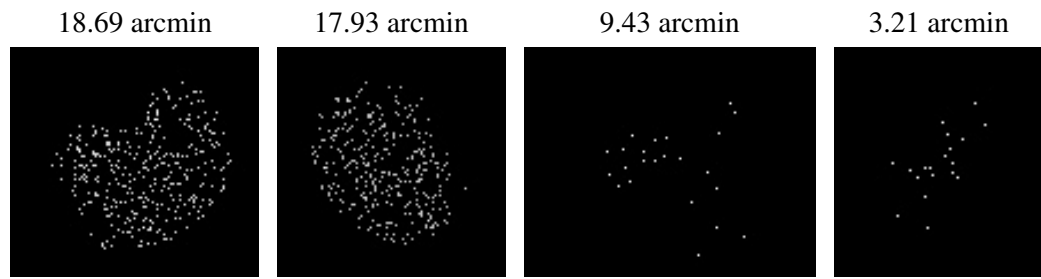
2.5.2 Slot 1



2.5.3 Slot 2



3 Point Sources



A Summary

A.1 Status

V&V Scientist	Jen Lauer
V&V Date (YYYY-MM-DD)	2006.11.06
V&V Edition	1
V&V Disposition and Status	OK
V&V Charge Time	3.296

A.2 Comments

Charge time:

Charge time for this ObsId remains at previous value of 3.296 ks
although with the current processing the charge time would have been
3.395 ksec.

Monitor constraint met.