

# V&V Reference Report

## L2 ASCDS Version : 8.4.5

Observation 2202 - L2 Version 3  
Chandra X-Ray Center

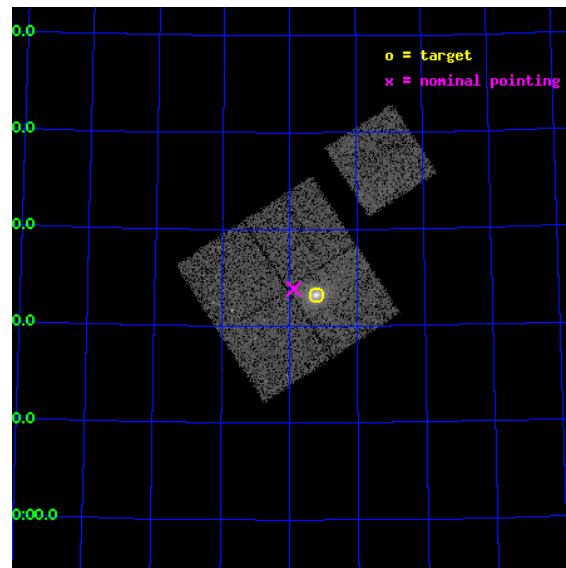
L2 Processing Date : Sep 2 2012

## Contents

<b>1</b>	<b>Front</b>	<b>2</b>
<b>2</b>	<b>OBI</b>	<b>3</b>
2.1	OBI . . . . .	3
2.1.1	Images . . . . .	3
2.1.2	Bias . . . . .	3
2.1.3	Parameters . . . . .	4
2.1.4	Events . . . . .	4
2.2	Compared Parameters . . . . .	5
2.3	Aspect . . . . .	6
2.4	Star Slots . . . . .	9
2.4.1	Slot 3 . . . . .	9
2.4.2	Slot 4 . . . . .	10
2.4.3	Slot 5 . . . . .	11
2.4.4	Slot 6 . . . . .	12
2.4.5	Slot 7 . . . . .	13
2.5	FID Slots . . . . .	14
2.5.1	Slot 0 . . . . .	14
2.5.2	Slot 1 . . . . .	15
2.5.3	Slot 2 . . . . .	16
<b>A</b>	<b>Summary</b>	<b>17</b>
A.1	Status . . . . .	17
A.2	Comments . . . . .	17

# 1 Front

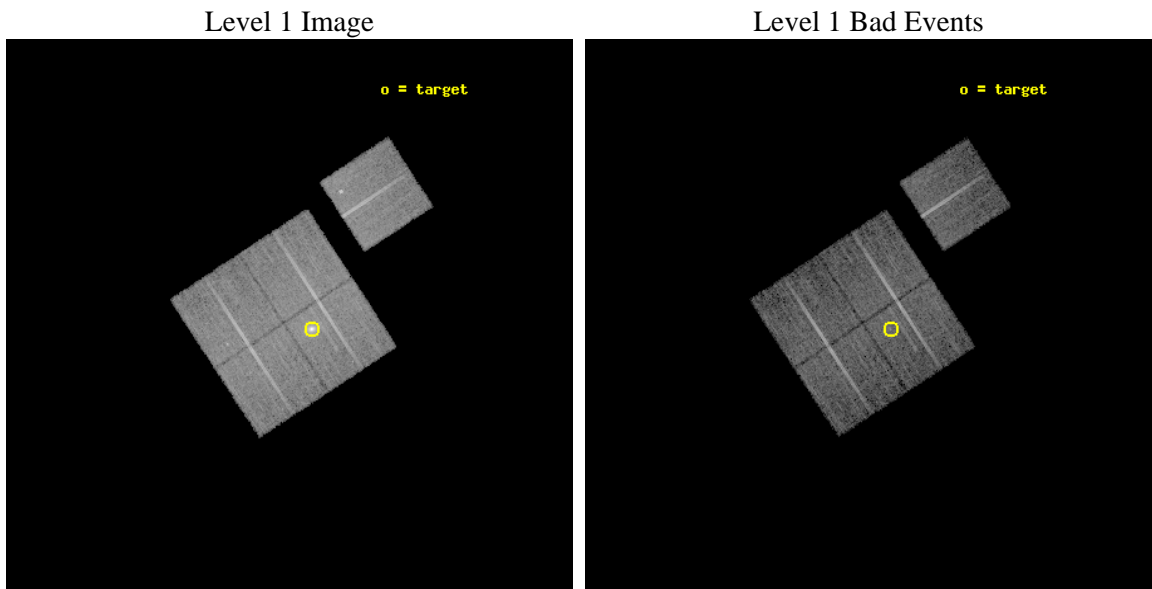
seq_num	800141	Sequence number
obs_id	2202	Observation id
title	NEWLY DISCOVERED MASSIVE, MODERATE REDSHIFT X-RAY CLUSTERS OF GALAXIES	Proposal title
observer	Prof. Sabine Schindler	Principal investigator
object	RBS797	Source name
dtcycle	0	&#160
cycle	P	events from which exps? Prim/Second/Both
ra_targ	146.805	Observer's specified target RA [deg]
dec_targ	76.388056	Observer's specified target Dec [deg]
ra_nom	146.969303659	Nominal RA [deg]
dec_nom	76.397965128853	Nominal Dec [deg]
roll_nom	56.816771034913	Nominal Roll [deg]
revision	3	Processing version of data
ontime	11900.899977118	Sum of GTIs [s]
livetime	11745.405957602	Livetime [s]
ontime0	11900.899977118	Sum of GTIs [s]
ontime1	11900.899977118	Sum of GTIs [s]
ontime2	11894.618036732	Sum of GTIs [s]
ontime3	11900.899977118	Sum of GTIs [s]
ontime6	11897.759016886	Sum of GTIs [s]
l2events	47934	Number of level 2 events



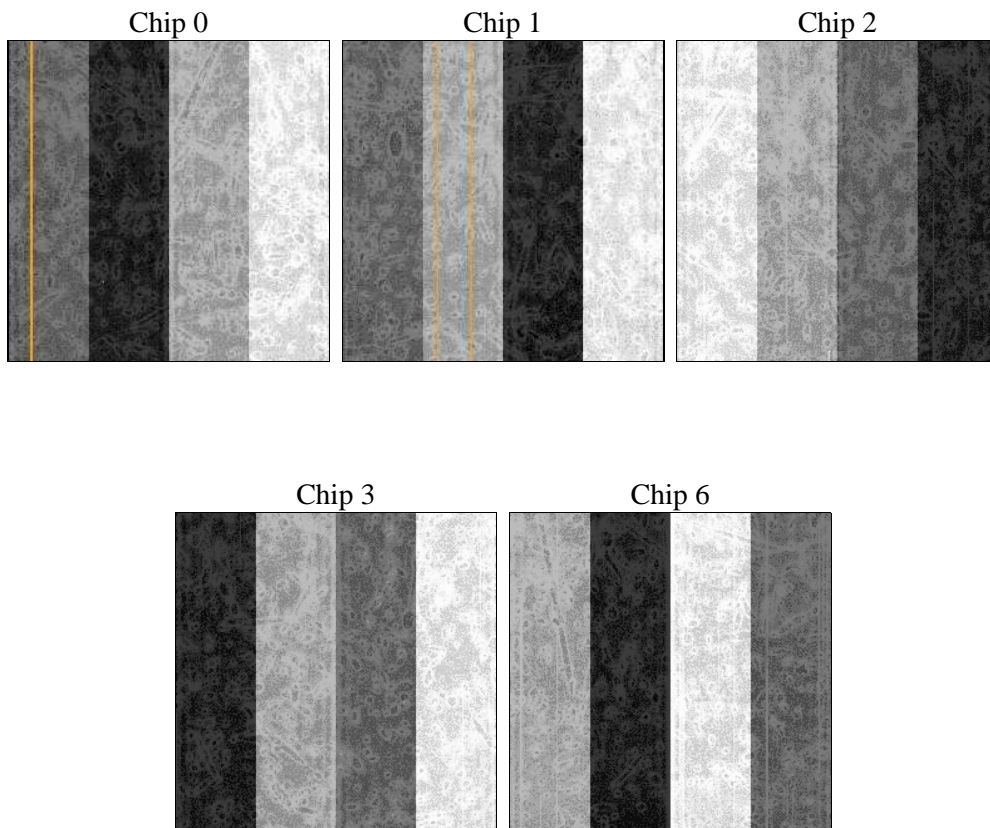
## 2 OBI

### 2.1 OBI

#### 2.1.1 Images



#### 2.1.2 Bias



### 2.1.3 Parameters

obi_num	0	Obi number	sched_exp_time	11793.749000	[s] Scheduled observation exposure time
ascdsver	8.4.5	Processing system revision	ontime	11900.899977118	Sum of GTIs [s]
caldsver	4.5.1.1	&#160	ontime0	11900.899977118	Sum of GTIs [s]
date	2012-09-02T10:01:34	Date and time of file creation	ontime1	11900.899977118	Sum of GTIs [s]
revision	3	Processing version of data	ontime2	11894.618036732	Sum of GTIs [s]
			ontime3	11900.899977118	Sum of GTIs [s]
			ontime6	11897.759016886	Sum of GTIs [s]
			l1events	383390	Number of level 1 events

### 2.1.4 Events

	ccd 0	ccd 1	ccd 2	ccd 3	ccd 6
level 1 events	71666	71946	76193	87179	76406
rejected events	62632	62722	67747	67833	66742
rejected %	87%	87%	88%	77%	87%

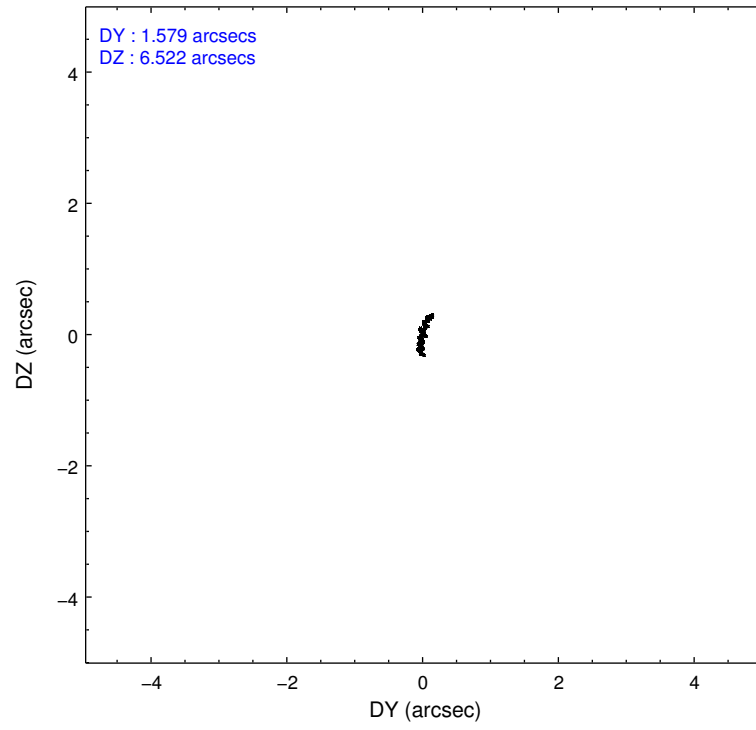
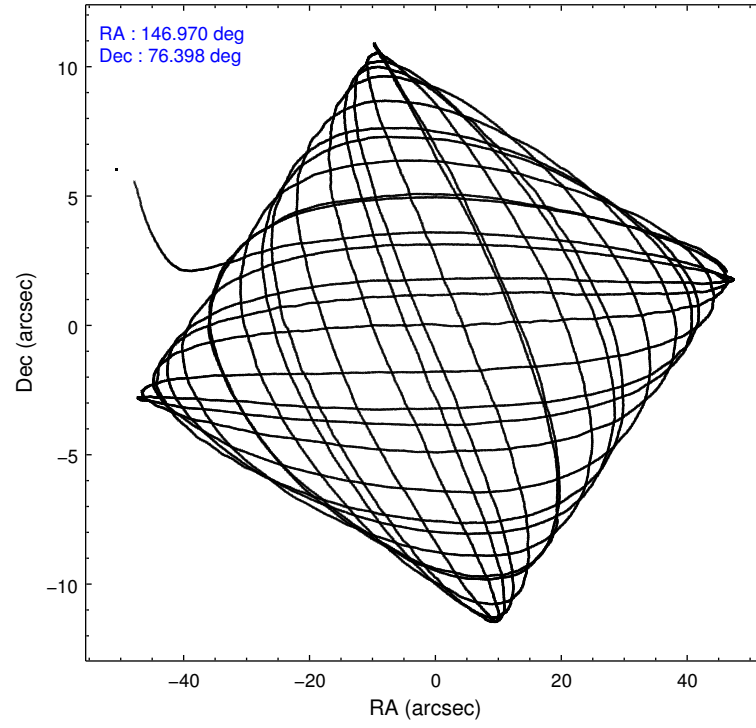
	ccd 0	ccd 1	ccd 2	ccd 3	ccd 6
grade 0 events	4001	3908	3657	12449	4555
	5%	5%	4%	14%	5%
grade 1 events	45	35	32	95	45
	0%	0%	0%	0%	0%
grade 2 events	1794	1798	1685	2791	1664
	2%	2%	2%	3%	2%
grade 3 events	913	986	860	1122	880
	1%	1%	1%	1%	1%
grade 4 events	860	897	803	1194	879
	1%	1%	1%	1%	1%
grade 5 events	2606	2883	2464	2919	3048
	3%	4%	3%	3%	3%
grade 6 events	1471	1640	1444	1795	1694
	2%	2%	1%	2%	2%
grade 7 events	59976	59799	65248	64814	63641
	83%	83%	85%	74%	83%

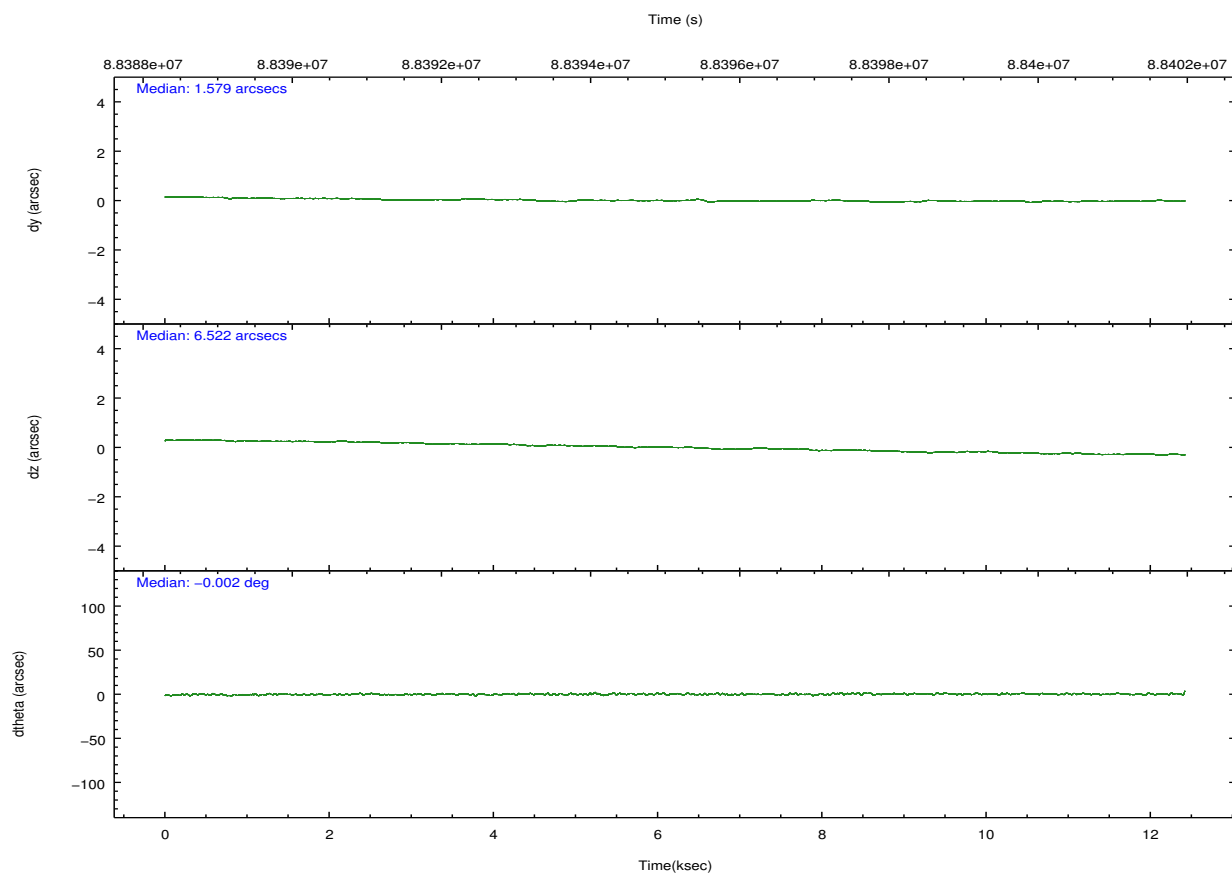
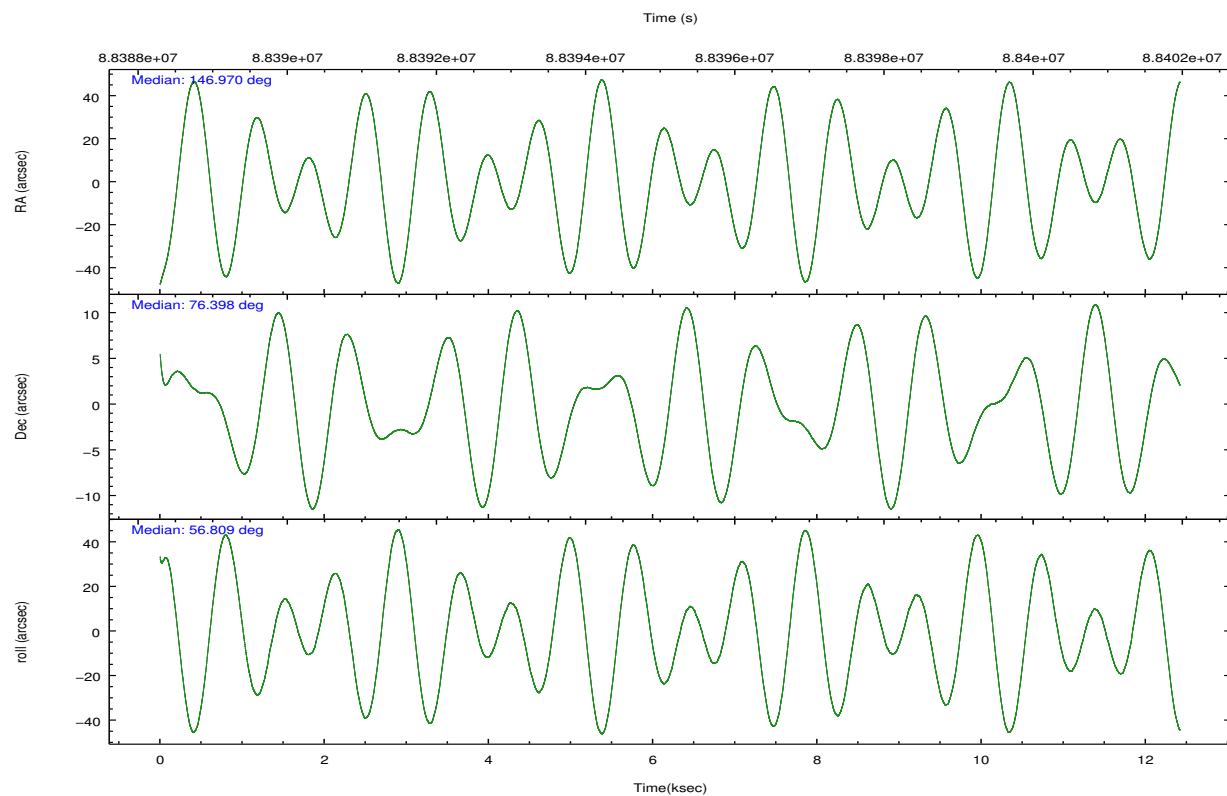


## 2.2 Compared Parameters

Parameter	Planned	Actual	Parameter	Planned	Actual
Instrument	ACIS	ACIS	Obspar format version number	7	7
Detector	ACIS-01236	ACIS-01236	Obspar file type	PREDICTED	ACTUAL
Grating	NONE	NONE	Obspar update status	NONE	UPDATED
Data mode	VFAINT	VFAINT	Number of optional ACIS chips dropped	0	0
Observation mode	POINTING	POINTING	On-chip summing requested	N	N
[deg] Pointing RA	146.962527	146.9693036590036	Subarray requested	NONE	NONE
[deg] Pointing Dec	76.370426	76.39796512885329	Alternating exposures requested	N	N
[deg] Pointing Roll	56.614677	56.81677103491313	[s] Primary exposure time	0.000000	3.1
[mm] SIM focus pos	-0.782348	-0.7809083437167272			
[mm] SIM defocus	0	0.001439871863259334			
[mm] SIM translation stage pos	-233.592463	-233.5874344608287			
[mm] SIM translation stage offset	0	-0.005018542100998502			
[s] Observation start time (MET)	88389549.184000	88388367.298601			
Observation start date	2000-10-20T00:38:05	2000-10-20T00:19:27			
[s] Observation end time (MET)	88401343.184000	88401656.93660399			
Observation end date	2000-10-20T03:54:39	2000-10-20T04:00:56			
Read mode	TIMED	TIMED			

## 2.3 Aspect



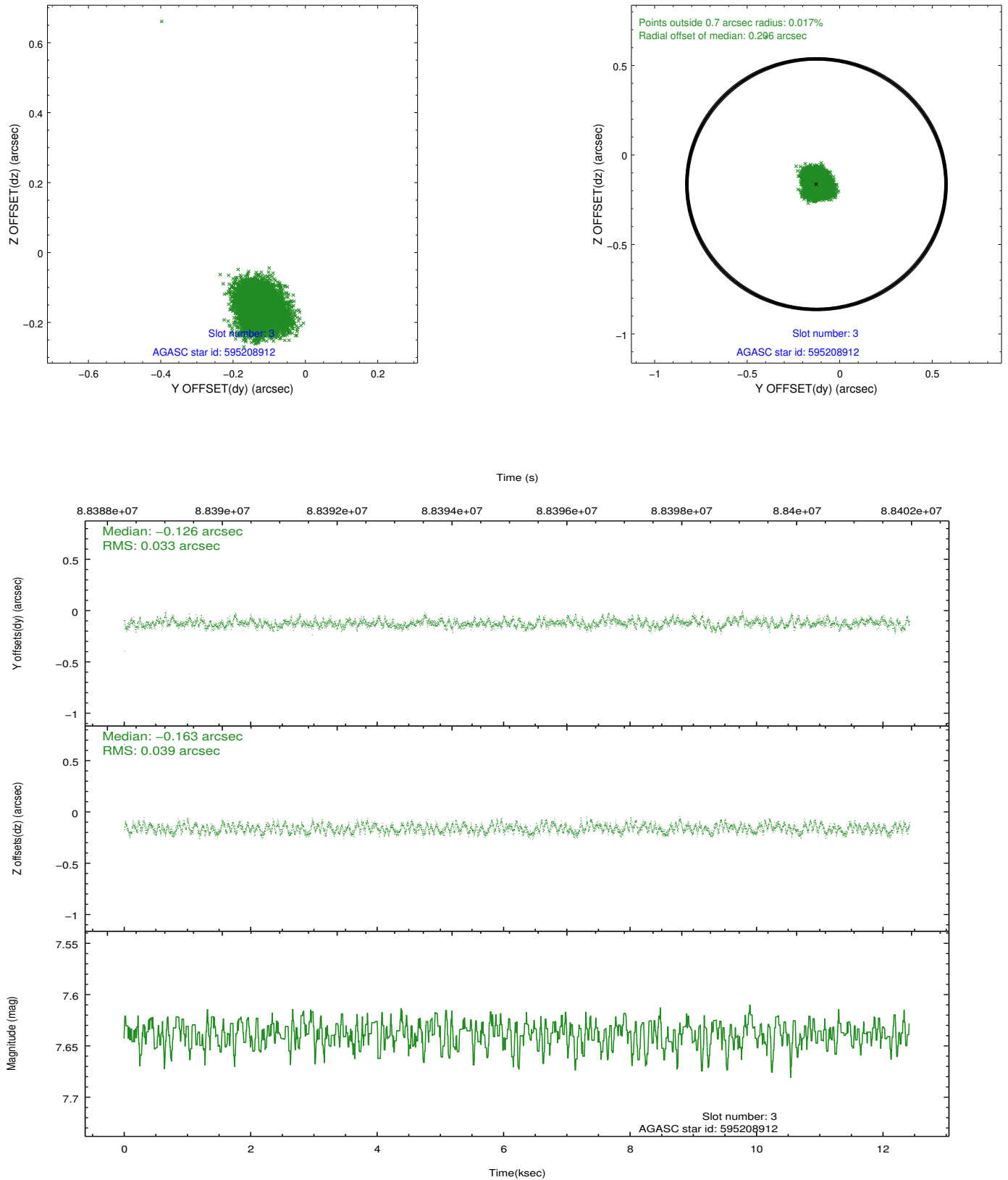


### Slot Statistics

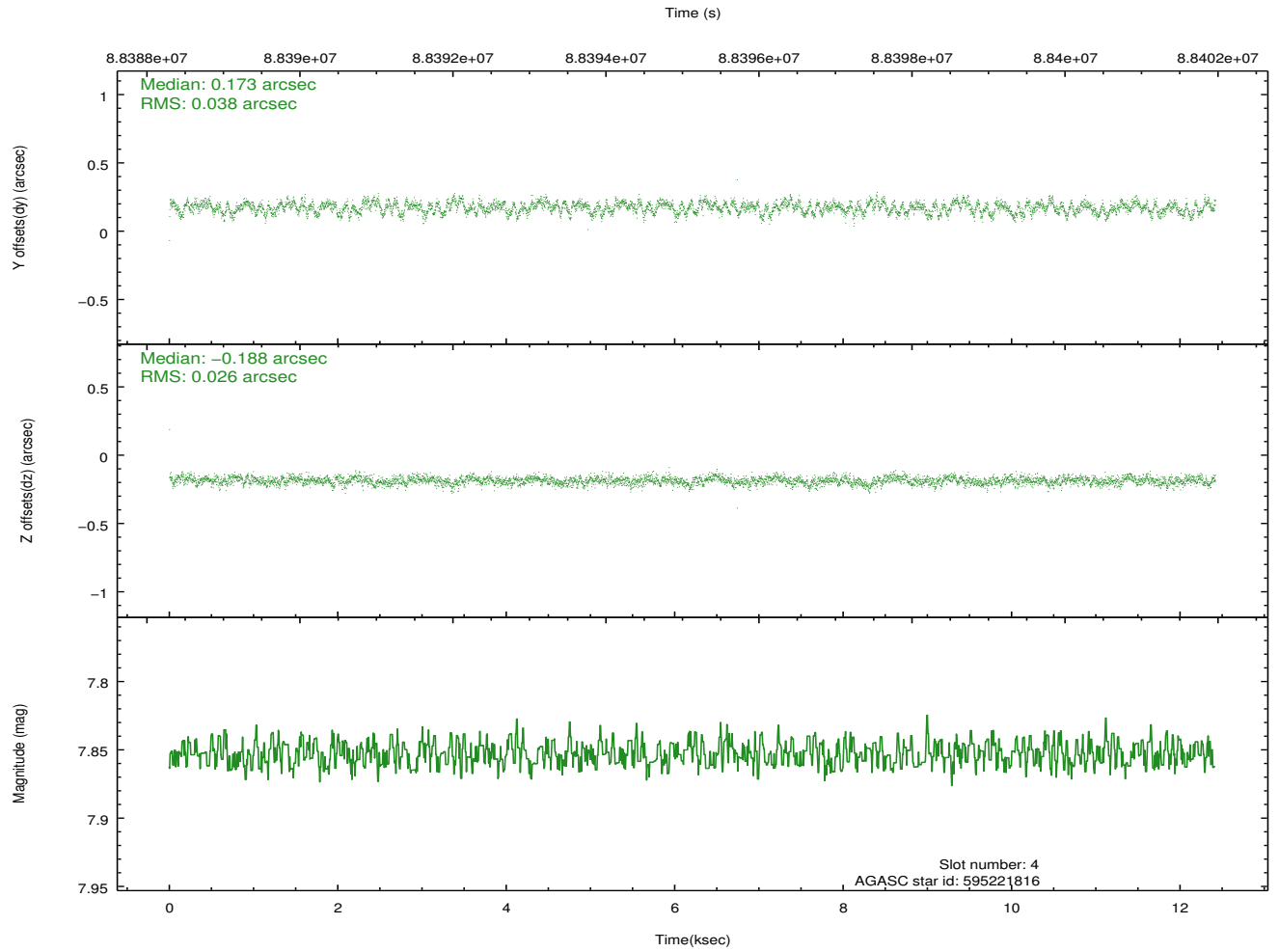
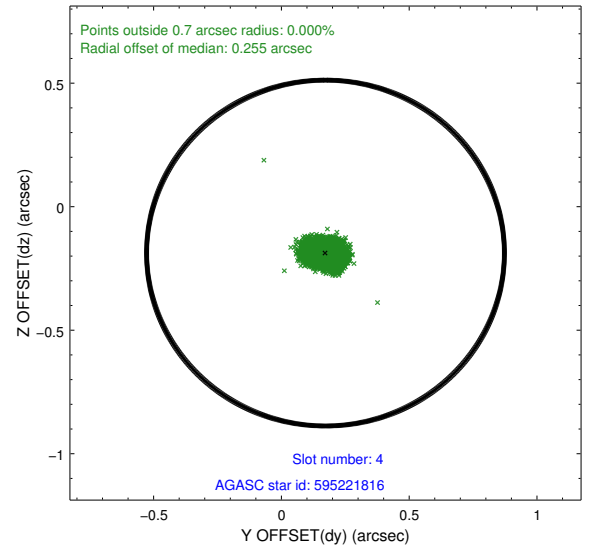
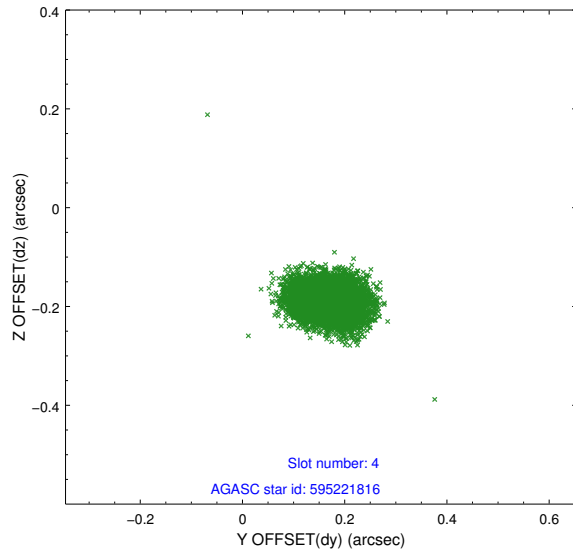
slot	status	id	mag	n_pts	med_dy	med_dz	dr1	dr2	ra	dec	mean_y	mean_z
0	FID	ACIS-I-2	7.16	3029	-0.042	-0.066	0.009	0.015	0.000000	0.000000	-755.97	-836.33
1	FID	ACIS-I-4	7.18	3029	-0.041	0.049	0.006	0.011	0.000000	0.000000	2157.90	1069.77
2	FID	ACIS-I-5	7.23	3029	-0.018	0.086	0.008	0.014	0.000000	0.000000	-1809.27	1068.09
3	GUIDE	595208912	7.64	6059	-0.126	-0.163	0.055	0.085	145.946535	77.221889	2118.70	2366.51
4	GUIDE	595221816	7.85	6059	0.173	-0.188	0.049	0.080	144.509411	76.162803	-1750.14	1376.28
5	GUIDE	595350280	7.85	6055	-0.163	0.164	0.051	0.085	149.467060	76.612978	1913.09	-1236.74
6	GUIDE	595201472	8.78	6059	0.153	0.081	0.063	0.105	145.984926	75.896091	-1892.41	-219.73
7	GUIDE	595338784	8.98	6057	-0.035	0.107	0.067	0.110	149.121836	76.143884	370.39	-1983.70

## 2.4 Star Slots

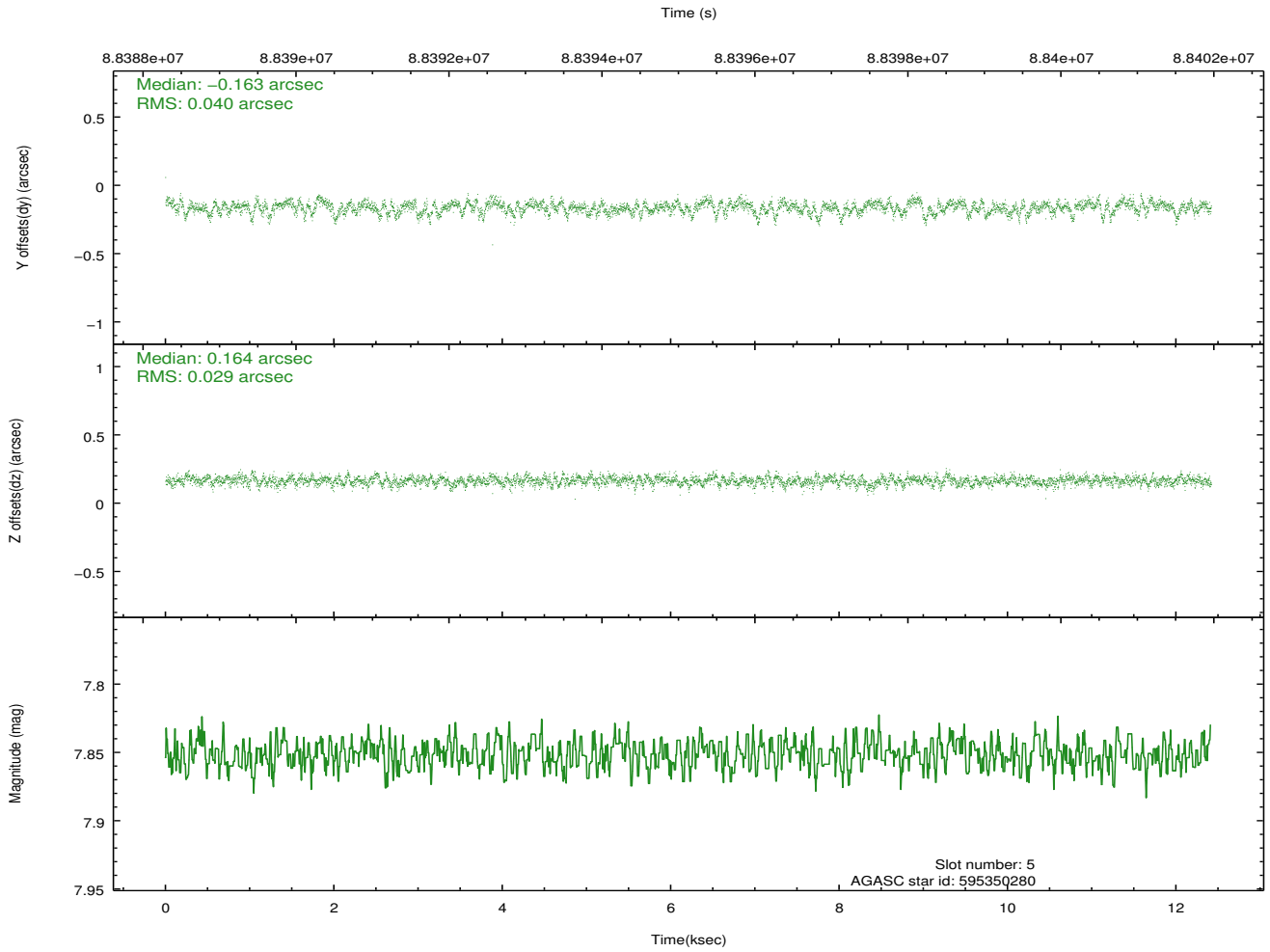
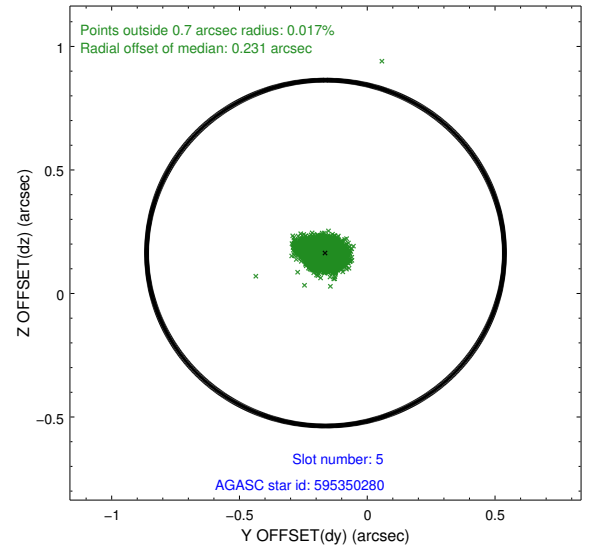
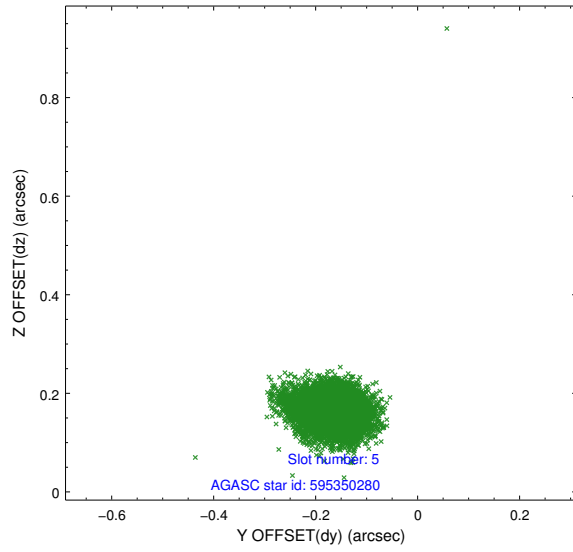
### 2.4.1 Slot 3



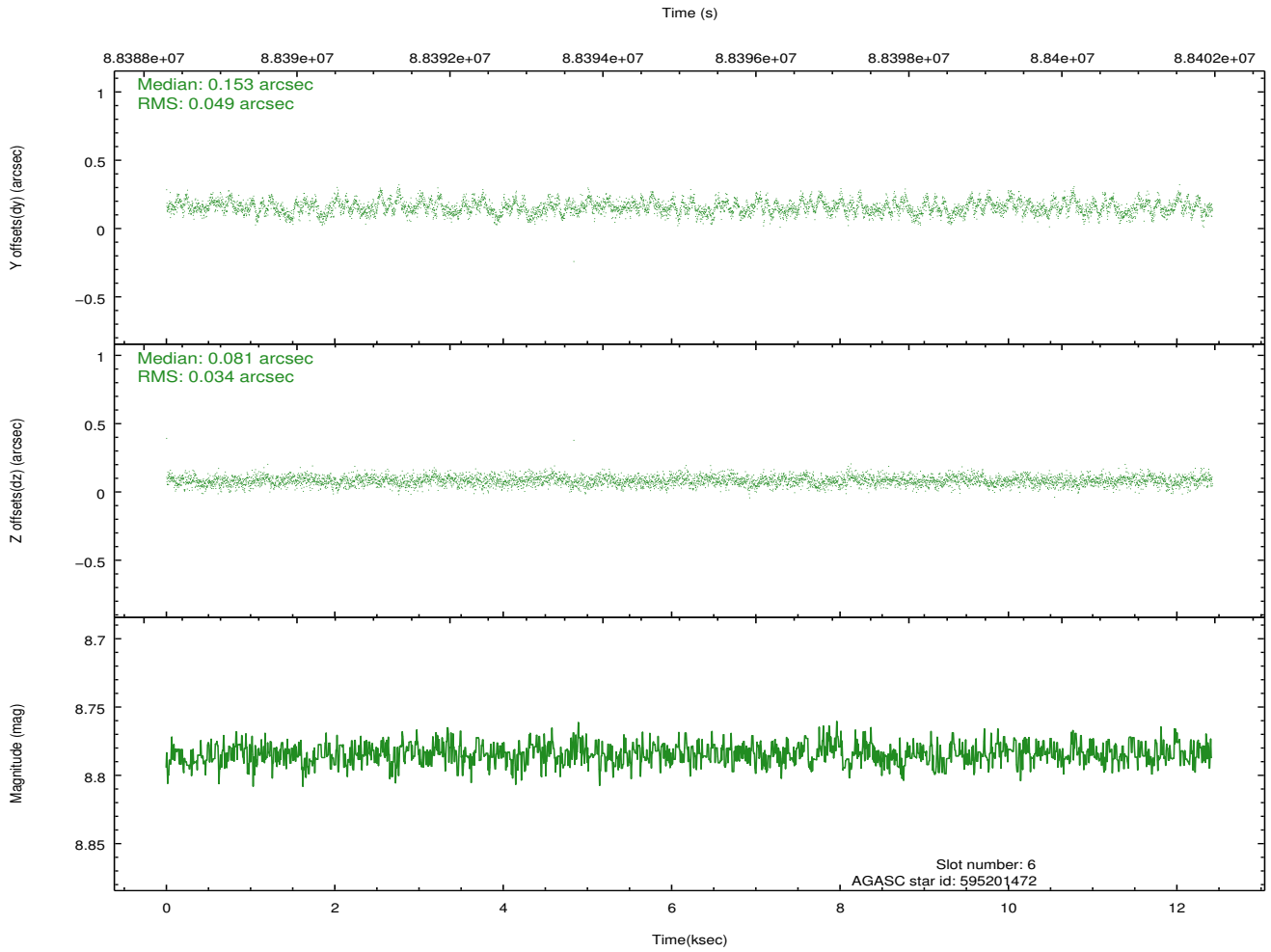
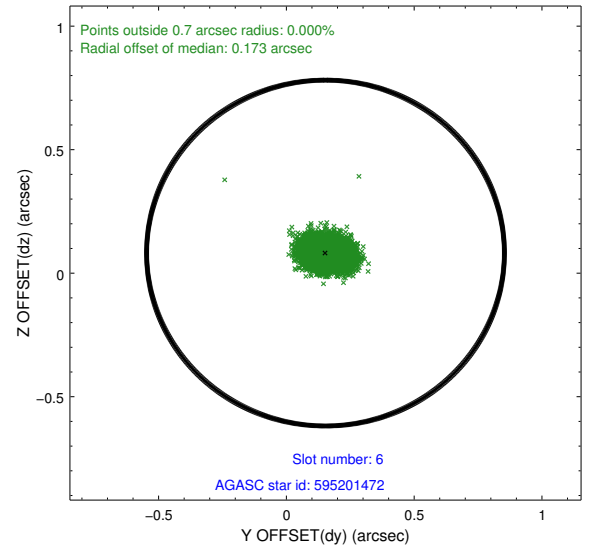
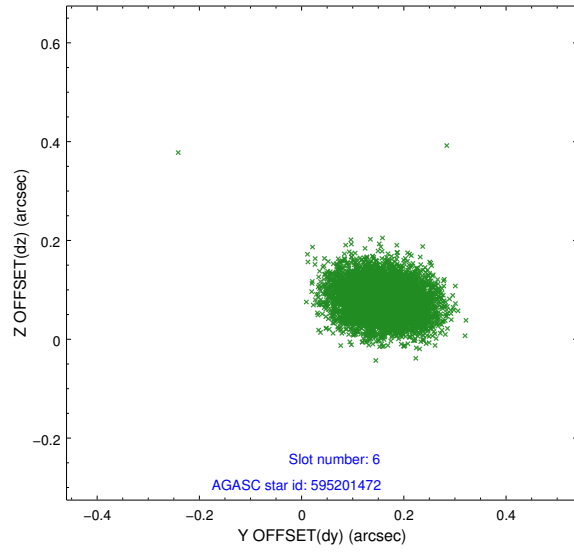
## 2.4.2 Slot 4



### 2.4.3 Slot 5

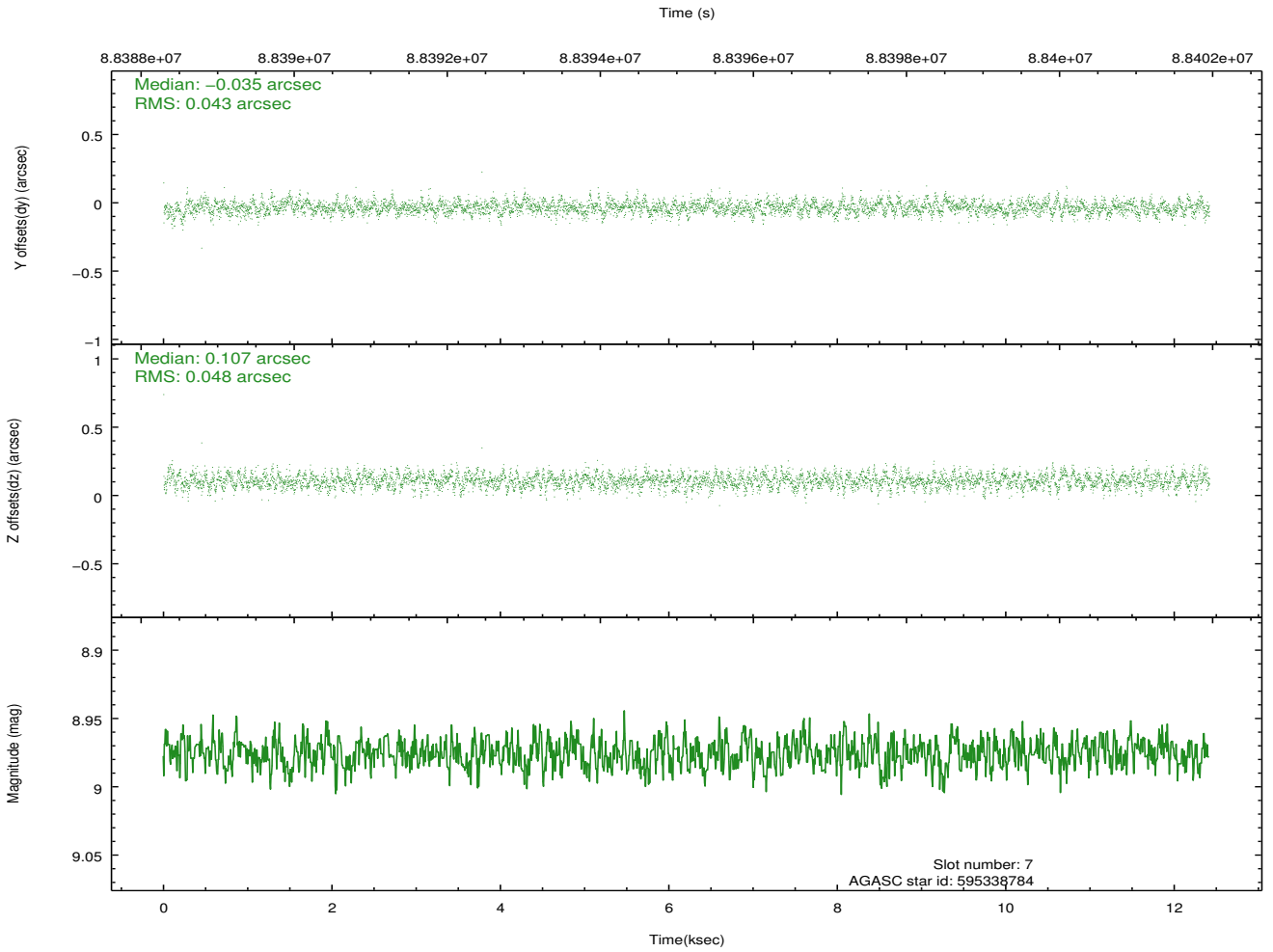
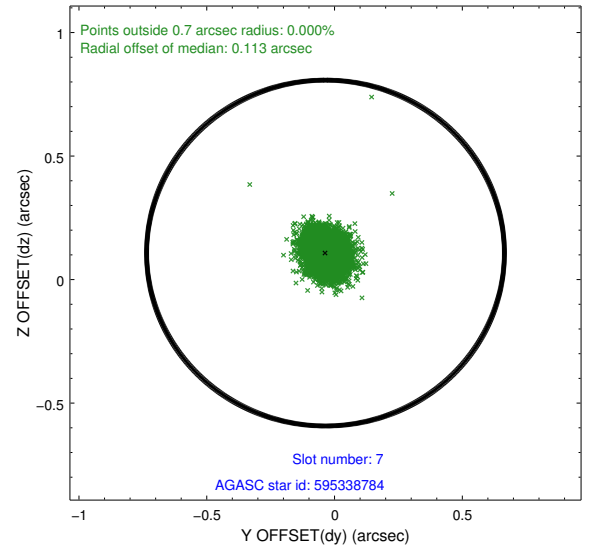
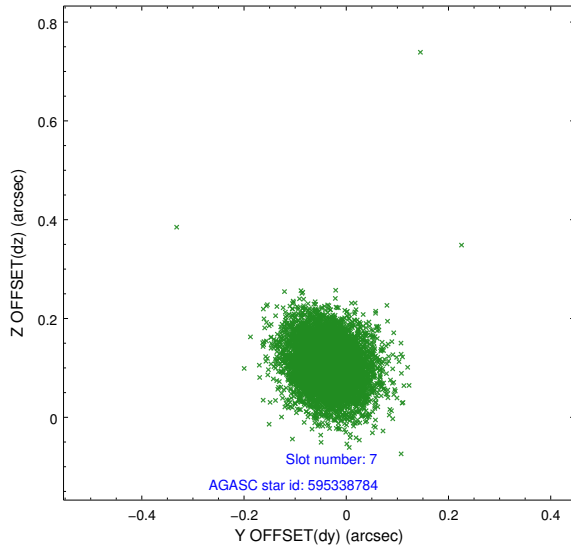


## 2.4.4 Slot 6



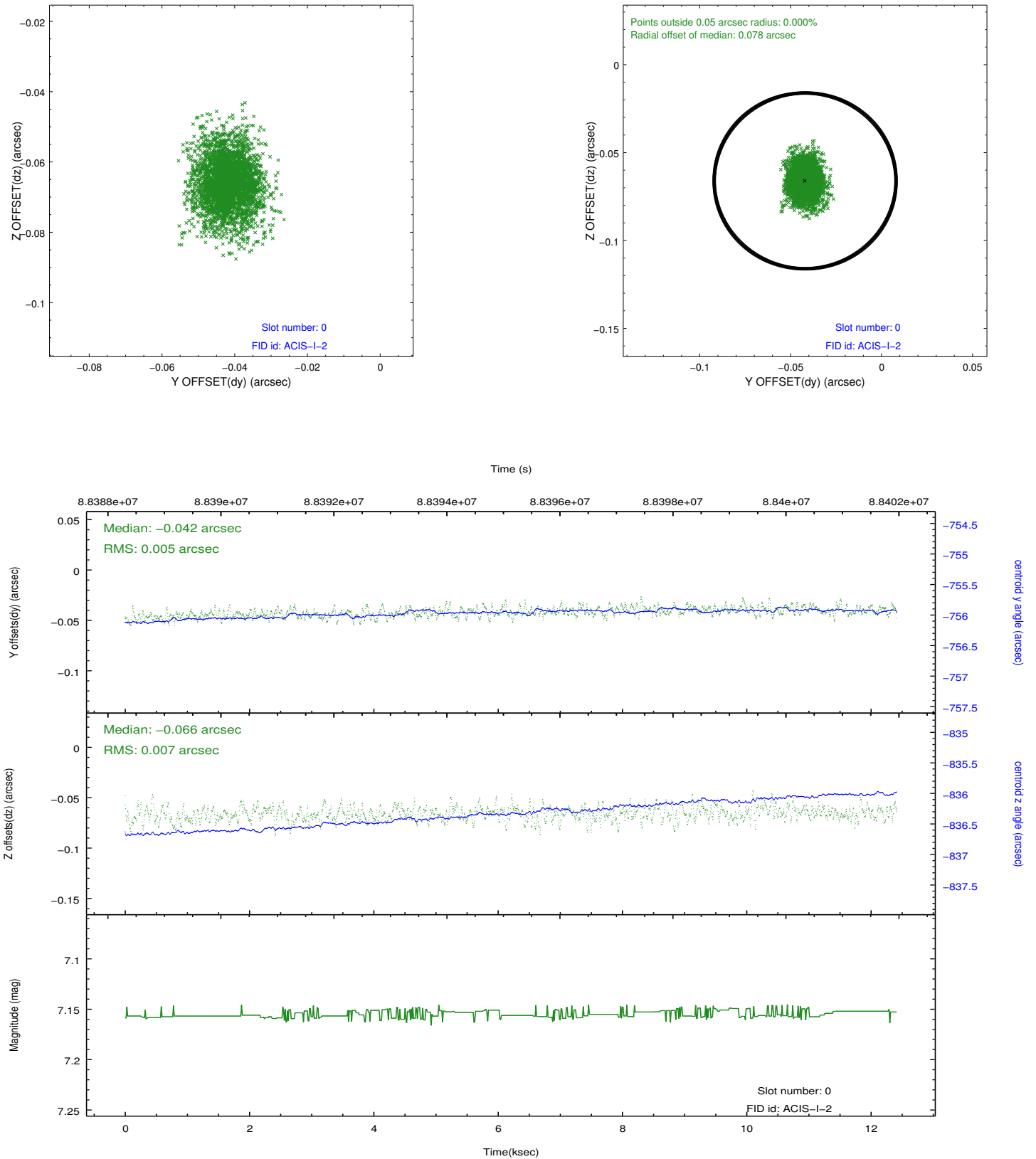


## 2.4.5 Slot 7

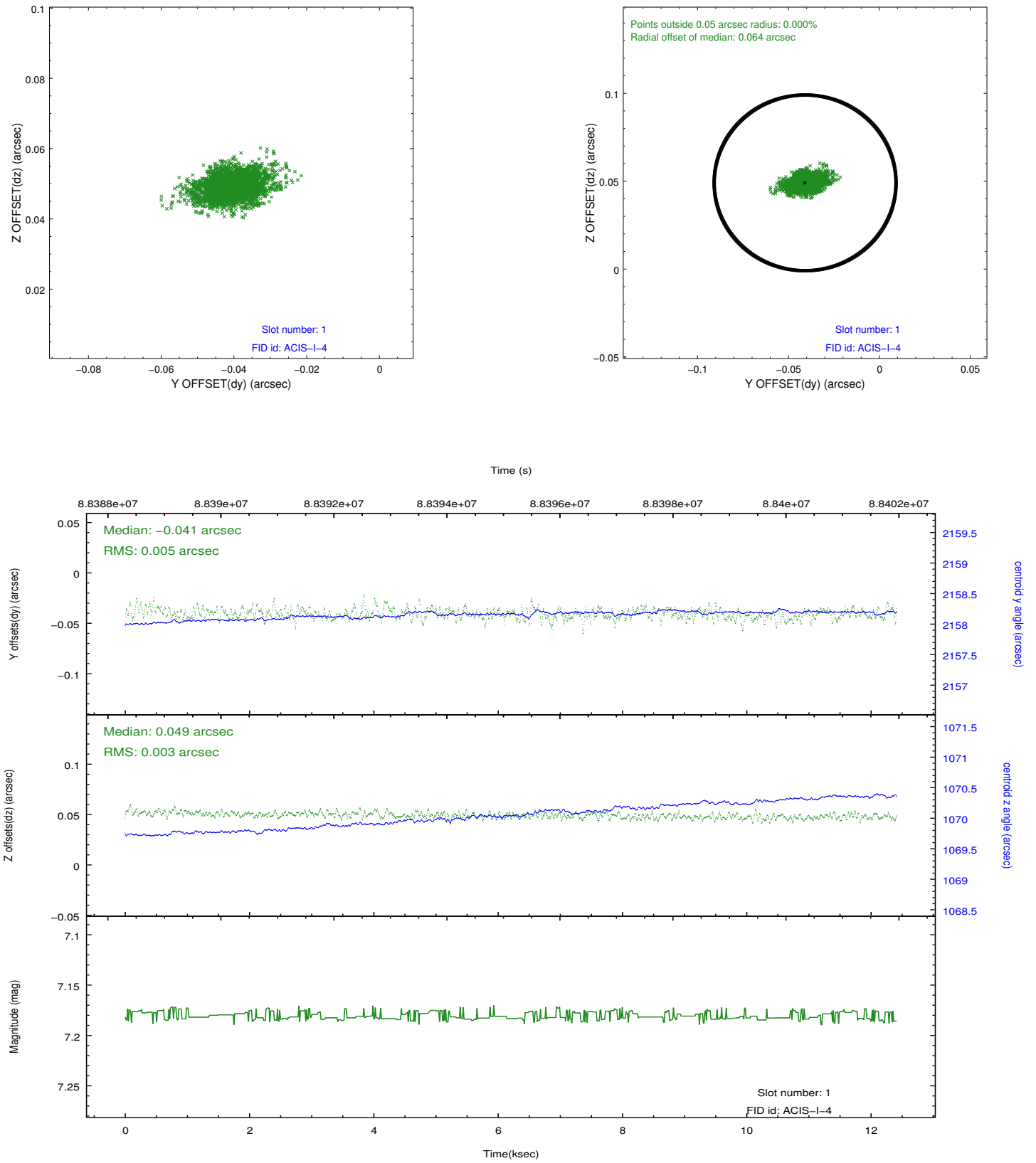


## 2.5 FID Slots

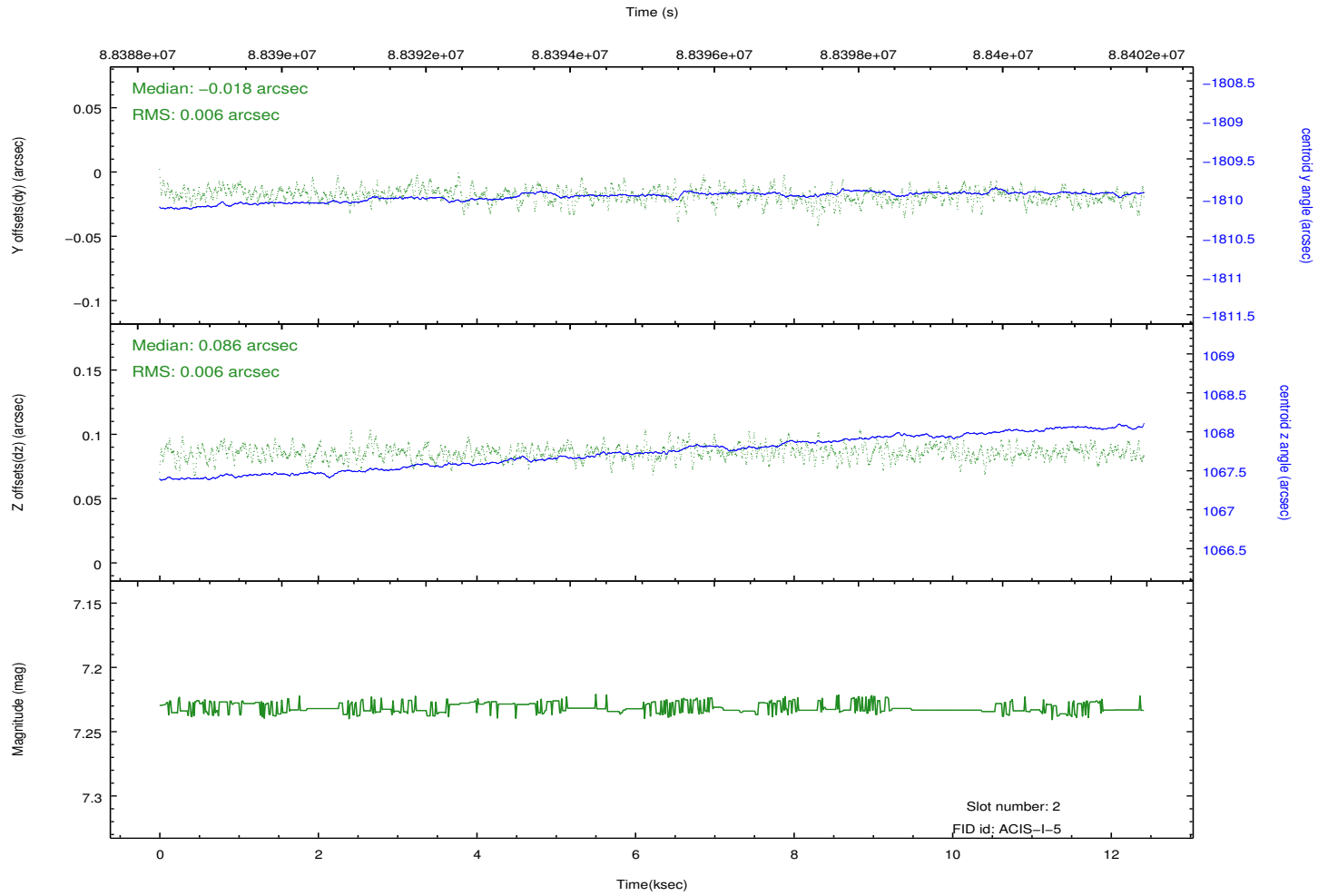
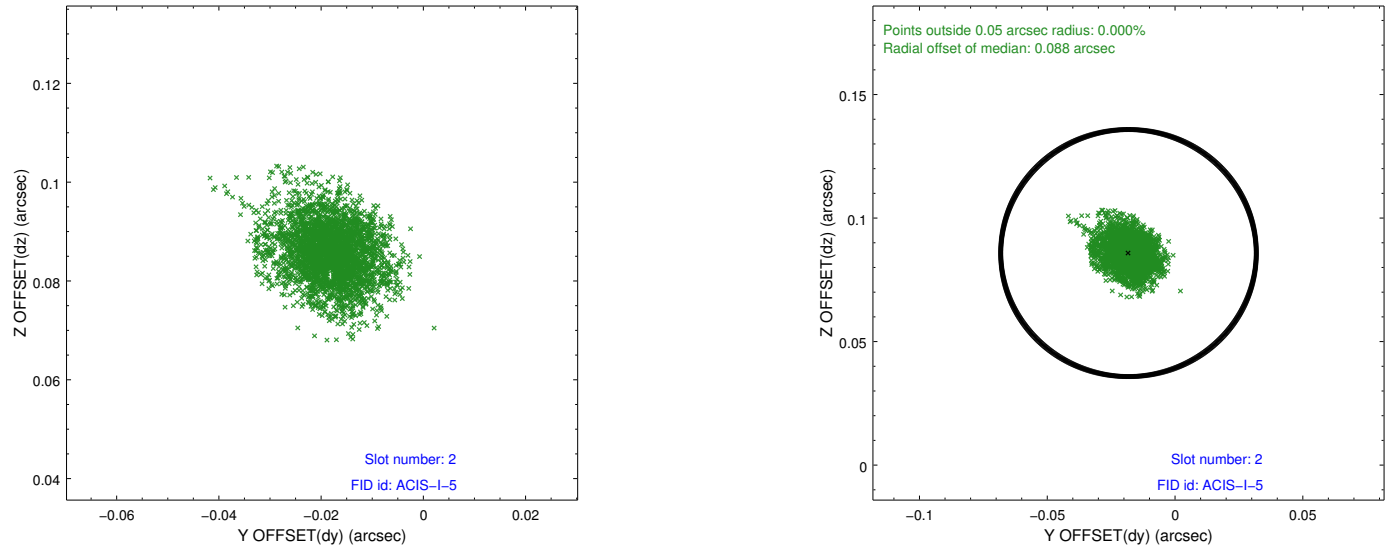
### 2.5.1 Slot 0



## 2.5.2 Slot 1



### 2.5.3 Slot 2



## A Summary

### A.1 Status

V&V Scientist	Jen Lauer
V&V Date (YYYY-MM-DD)	2012.09.10
V&V Edition	1
V&V Disposition and Status	OK
V&V Charge Time	11.904

### A.2 Comments