

V&V Reference Report

L2 ASCDS Version : 7.6.9

Observation 2192 - L2 Version 001
Chandra X-Ray Center

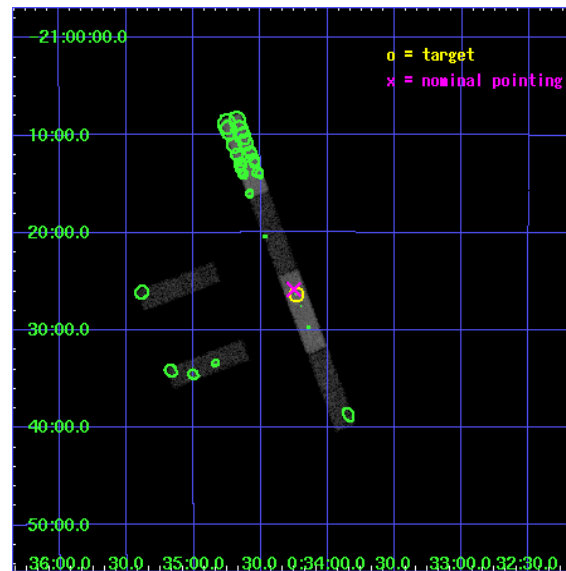
L2 Processing Date : Dec 21 2006

Contents

1	Front	2
2	OBI	3
2.1	OBI	3
2.1.1	Images	3
2.1.2	Bias	3
2.1.3	Parameters	4
2.1.4	Events	4
2.2	Compared Parameters	5
2.3	Aspect	6
2.4	Star Slots	9
2.4.1	Slot 3	9
2.4.2	Slot 4	10
2.4.3	Slot 5	11
2.4.4	Slot 6	12
2.4.5	Slot 7	13
2.5	FID Slots	14
2.5.1	Slot 0	14
2.5.2	Slot 1	15
2.5.3	Slot 2	16
3	Point Sources	17
A	Summary	18
A.1	Status	18
A.2	Comments	18

1 Front

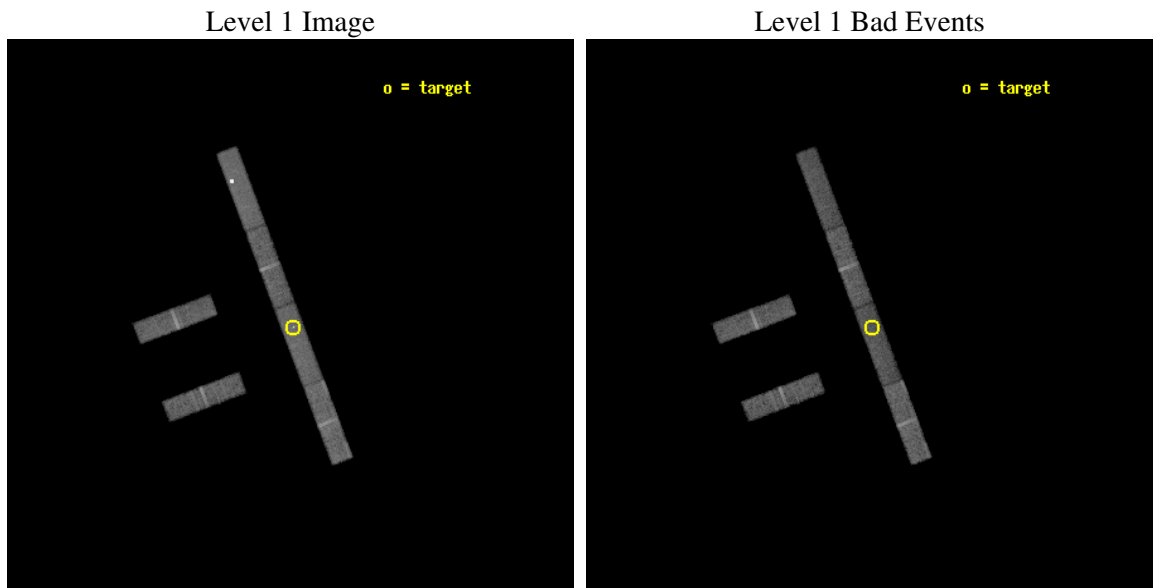
seq_num	700382
obs_id	2192
title	THE X-RAY EMISSION OF COMPOSITE GALAXIES
observer	Dr. Andreas Zezas
object	IRAS00317-2142
dtcycle	0
cycle	P
ra_targ	8.5575
dec_targ	-21.439167
ra_nom	8.5628965504185
dec_nom	-21.430772447632
roll_nom	69.260850440922
revision	2
ontime	20494.099888951
livetime	19756.984748866
ontime2	20494.099888951
ontime3	20494.099888951
ontime5	20494.099888951
ontime6	20494.099888951
ontime7	20494.099888951
ontime8	20494.099888951
l2events	49737



2 OBI

2.1 OBI

2.1.1 Images

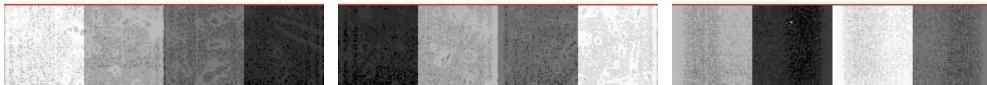


2.1.2 Bias

Chip 2

Chip 3

Chip 5



Chip 6

Chip 7

Chip 8



2.1.3 Parameters

obi_num	0
ascdsver	7.6.9
caldbver	3.2.4
date	2006-12-22T01:28:33
revision	2

sched_exp_time	20088.000000
ontime	20629.768385231
ontime2	20629.768385231
ontime3	20629.768385231
ontime5	20629.768385231
ontime6	20629.768385231
ontime7	20629.768385231
ontime8	20629.768385231
l1events	264878

2.1.4 Events

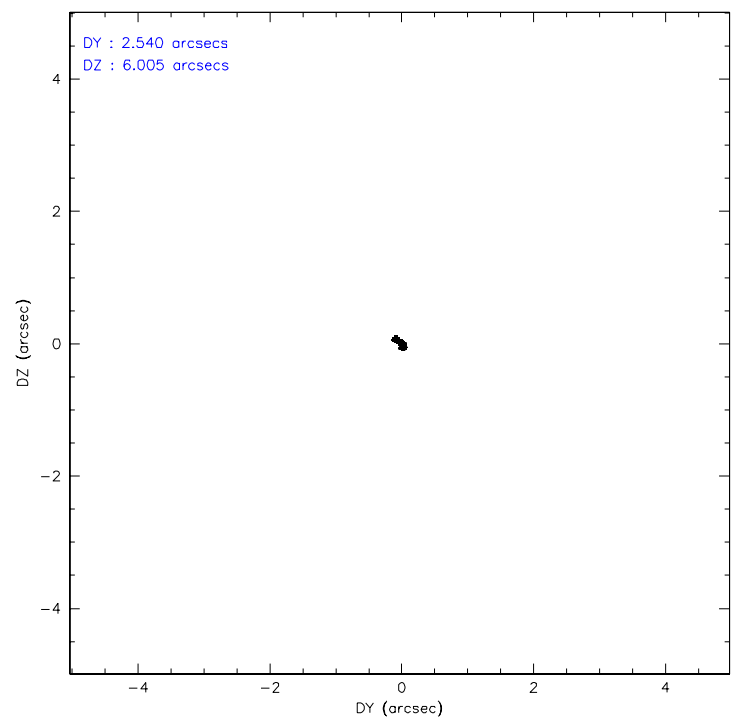
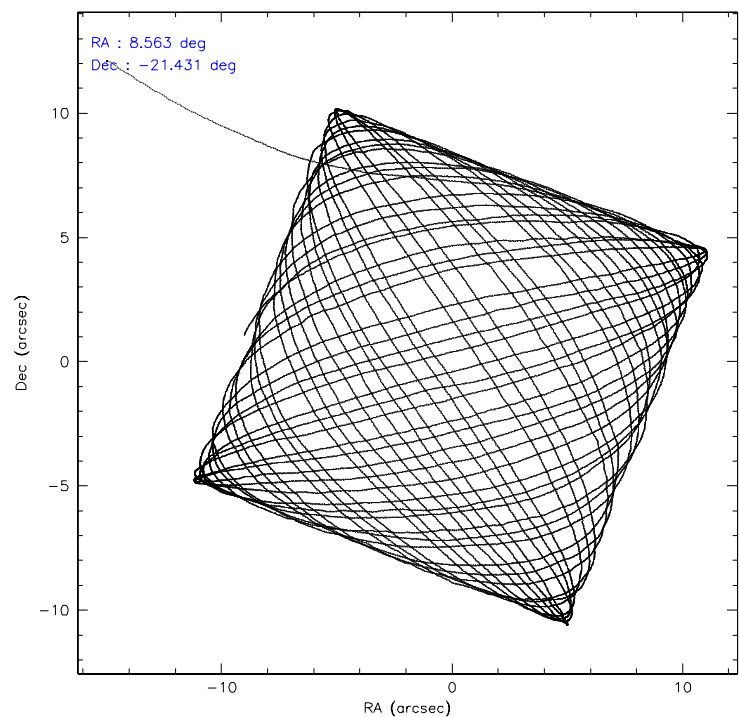
	ccd 2	ccd 3	ccd 5	ccd 6	ccd 7	ccd 8
level 1 events	39091	36418	58859	38228	43419	48863
rejected events	35147	32540	24822	33960	25118	39854
rejected %	89%	89%	42%	88%	57%	81%

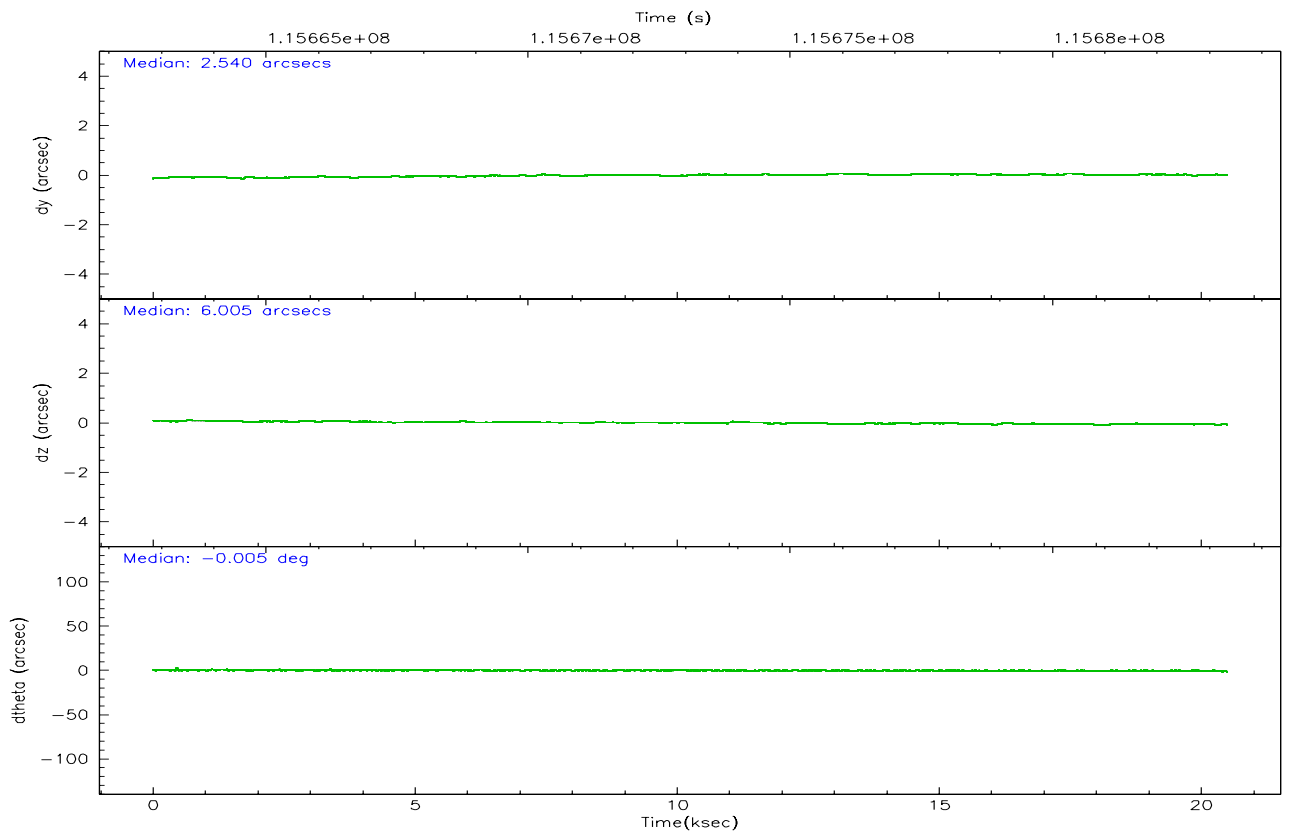
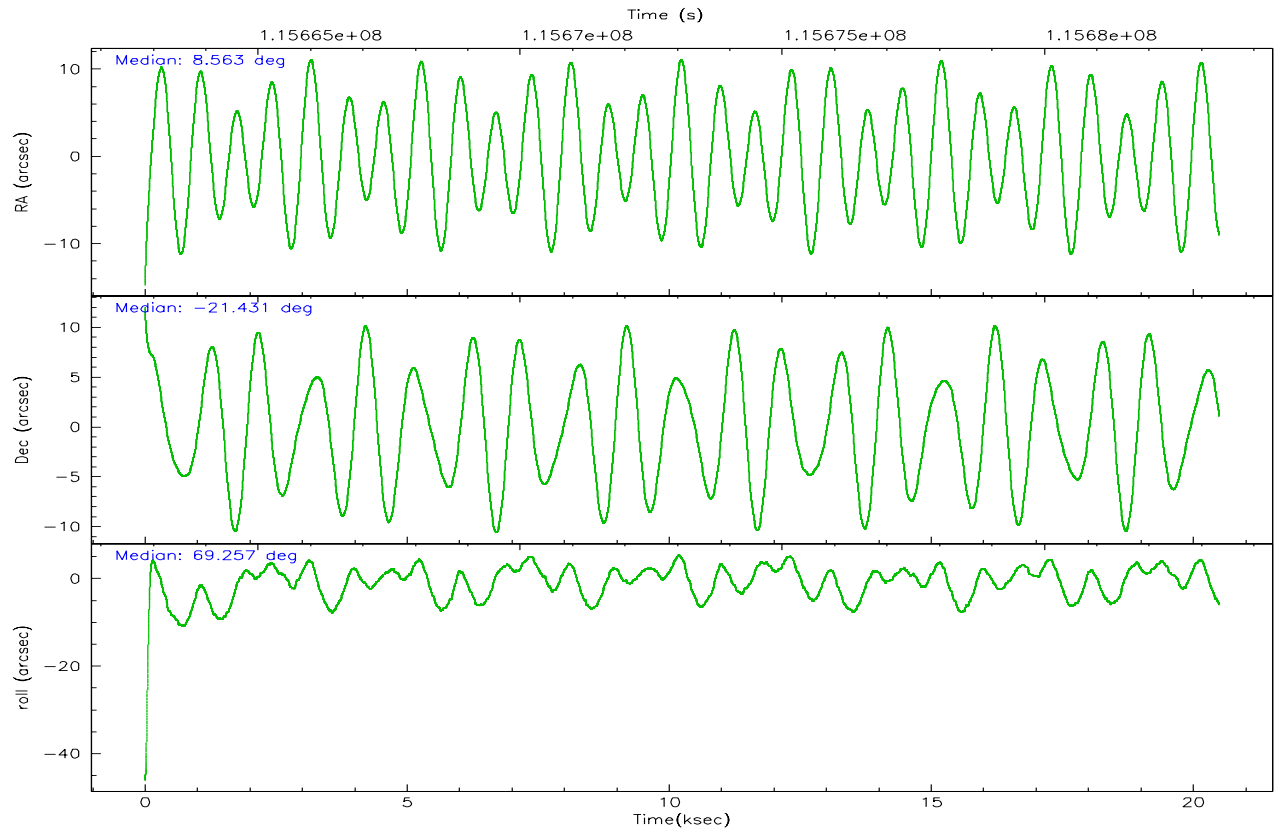
	ccd 2	ccd 3	ccd 5	ccd 6	ccd 7	ccd 8
grade 0 events	1372	1477	16043	1547	1798	2537
	3%	4%	27%	4%	4%	5%
grade 1 events	13	12	38	6	26	19
	0%	0%	0%	0%	0%	0%
grade 2 events	795	675	6007	780	4509	1860
	2%	1%	10%	2%	10%	3%
grade 3 events	563	539	710	559	1451	1141
	1%	1%	1%	1%	3%	2%
grade 4 events	543	546	642	593	1425	1108
	1%	1%	1%	1%	3%	2%
grade 5 events	1164	1171	2252	1340	2980	1595
	2%	3%	3%	3%	6%	3%
grade 6 events	699	663	10862	814	9233	2418
	1%	1%	18%	2%	21%	4%
grade 7 events	33942	31335	22305	32589	21997	38185
	86%	86%	37%	85%	50%	78%

2.2 Compared Parameters

Parameter	Planned	Actual	Parameter	Planned	Actual
Instrument	ACIS	ACIS	Obspar format version number	6	6
Detector	ACIS-235678	ACIS-235678	Obspar file type	PREDICTED	ACTUAL
Grating	NONE	NONE	Obspar update status	NONE	UPDATED
Data mode	FAINT	FAINT	Number of optional ACIS chips dropped	0	0
Observation mode	POINTING	POINTING	On-chip summing requested	N	N
Pointing RA	8.567922	8.562896550418458	Subarray requested	1/4	1/4
Pointing Dec	-21.457675	-21.43077244763155	Subarray start row	0	385
Pointing Roll	69.106080	69.26085044092169	Subarray row count	1024	256
SIM focus pos (mm)	-0.684267	-0.6828225247311905	Alternating exposures requested	N	N
SIM defocus (mm)	0	0.001444936568705701	Primary exposure time	0.000000	1.1
SIM translation stage pos (mm)	-190.132523	-190.1425803651734			
SIM translation stage offset (mm)	0	0.01005778216563158			
Observation start time	115663246.184000	115662164.39107			
Observation start date	2001-08-31T16:39:42	2001-08-31T16:22:44			
Observation end time	115683334.184000	115684126.55443			
Observation end date	2001-08-31T22:14:30	2001-08-31T22:28:46			
Read mode	TIMED	TIMED			

2.3 Aspect



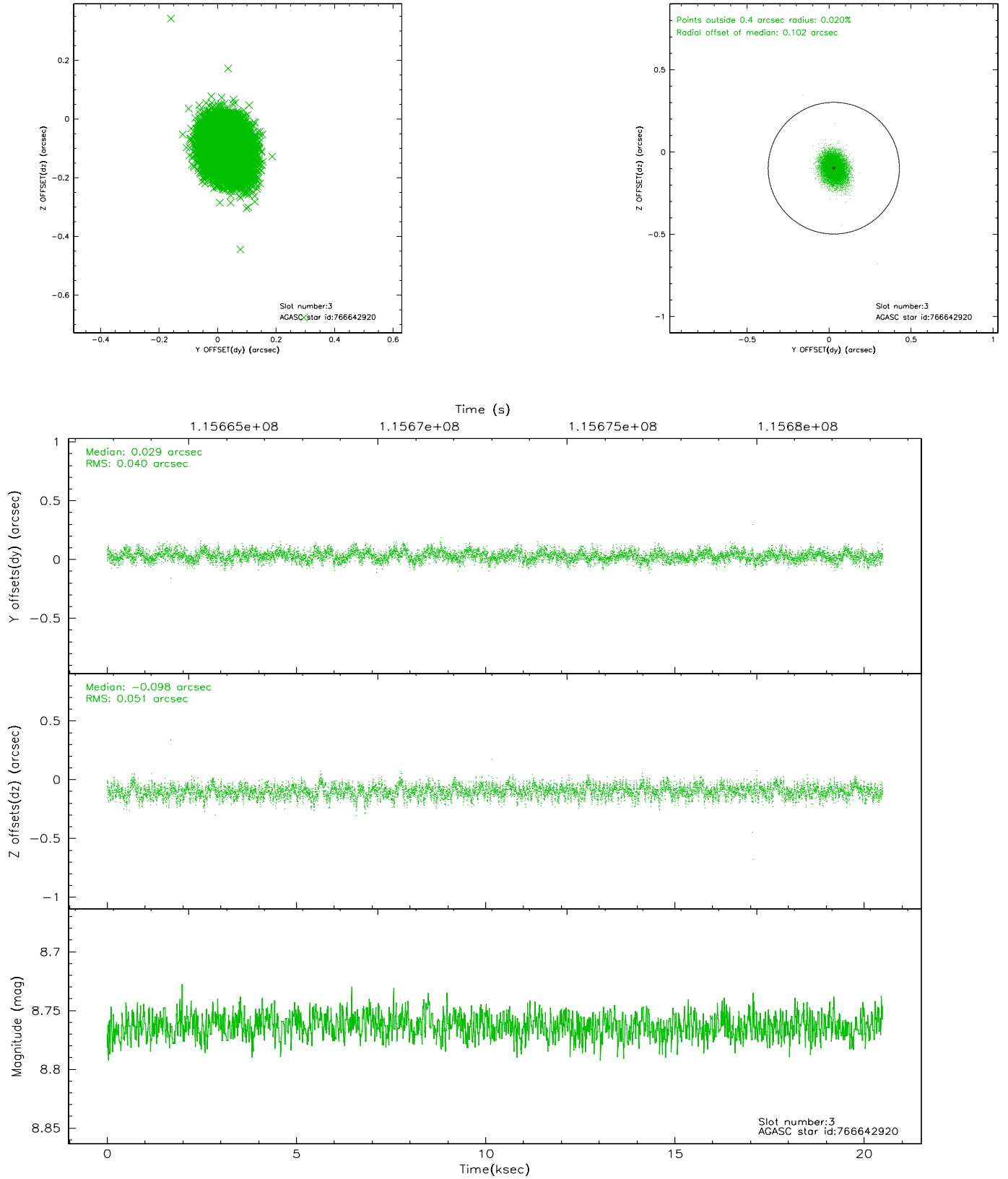


Slot Statistics

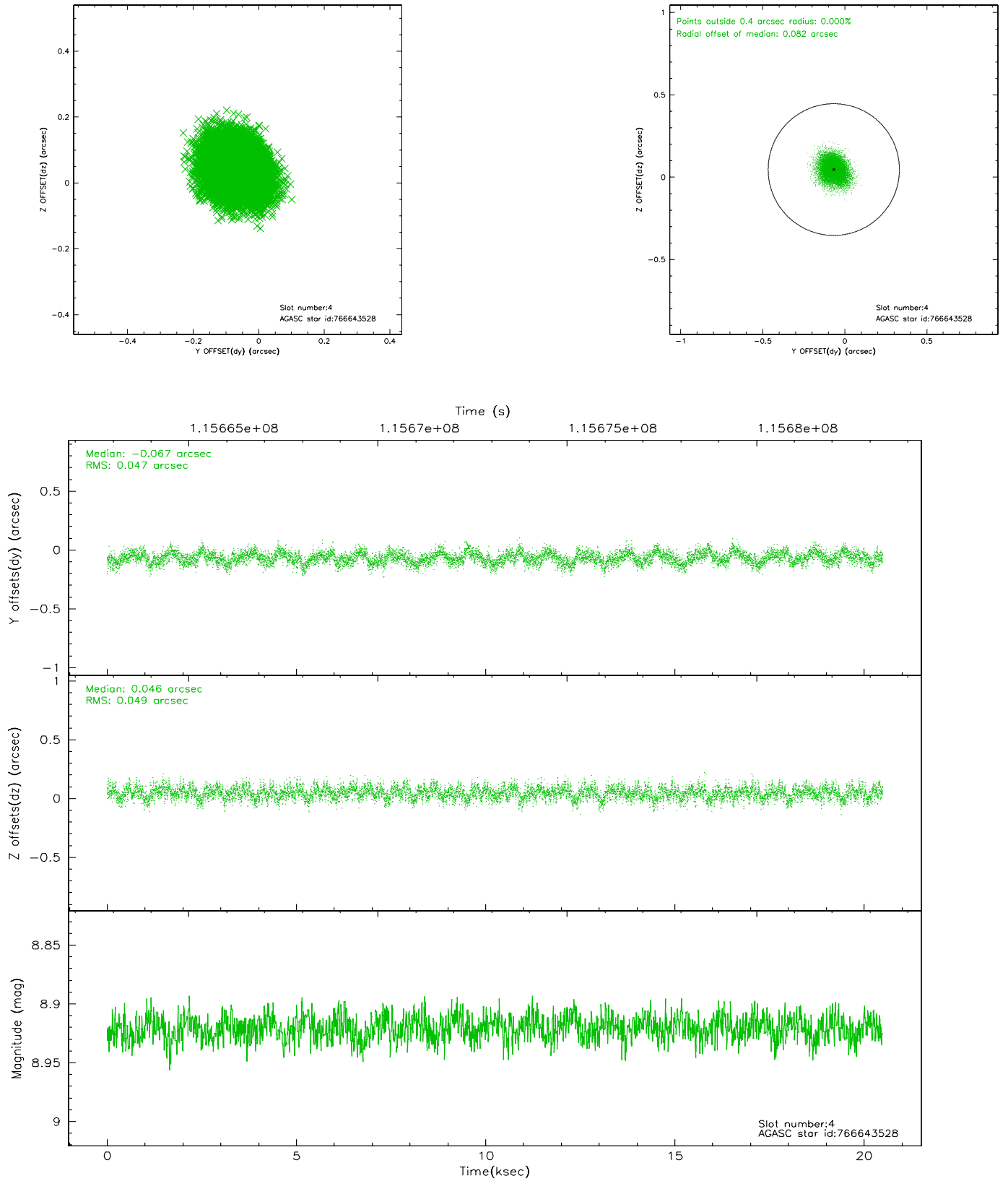
slot	status	id	mag	n_pts	med_dy	med_dz	dr1	dr2	ra	dec	mean_y	mean_z
0	FID	ACIS-S-2	7.12	4999	-0.025	0.027	0.010	0.016	0.000000	0.000000	-755.14	-1727.09
1	FID	ACIS-S-4	7.20	4999	-0.074	0.005	0.013	0.022	0.000000	0.000000	2157.97	181.26
2	FID	ACIS-S-5	7.24	4999	0.068	-0.023	0.010	0.016	0.000000	0.000000	-1807.70	175.01
3	GUIDE	766642920	8.76	9994	0.029	-0.098	0.069	0.111	8.852128	-21.744414	-626.02	-1255.07
4	GUIDE	766643528	8.92	9996	-0.067	0.046	0.073	0.118	9.051458	-21.398449	775.00	-1437.69
5	GUIDE	766643184	9.01	9992	0.056	-0.068	0.066	0.106	8.320820	-21.854151	-1628.34	263.06
6	GUIDE	766642600	9.74	9933	0.018	0.140	0.088	0.143	8.710822	-21.882167	-1257.62	-989.76
7	GUIDE	766643648	10.51	9991	-0.036	-0.019	0.147	0.244	8.408154	-21.352693	161.70	636.43

2.4 Star Slots

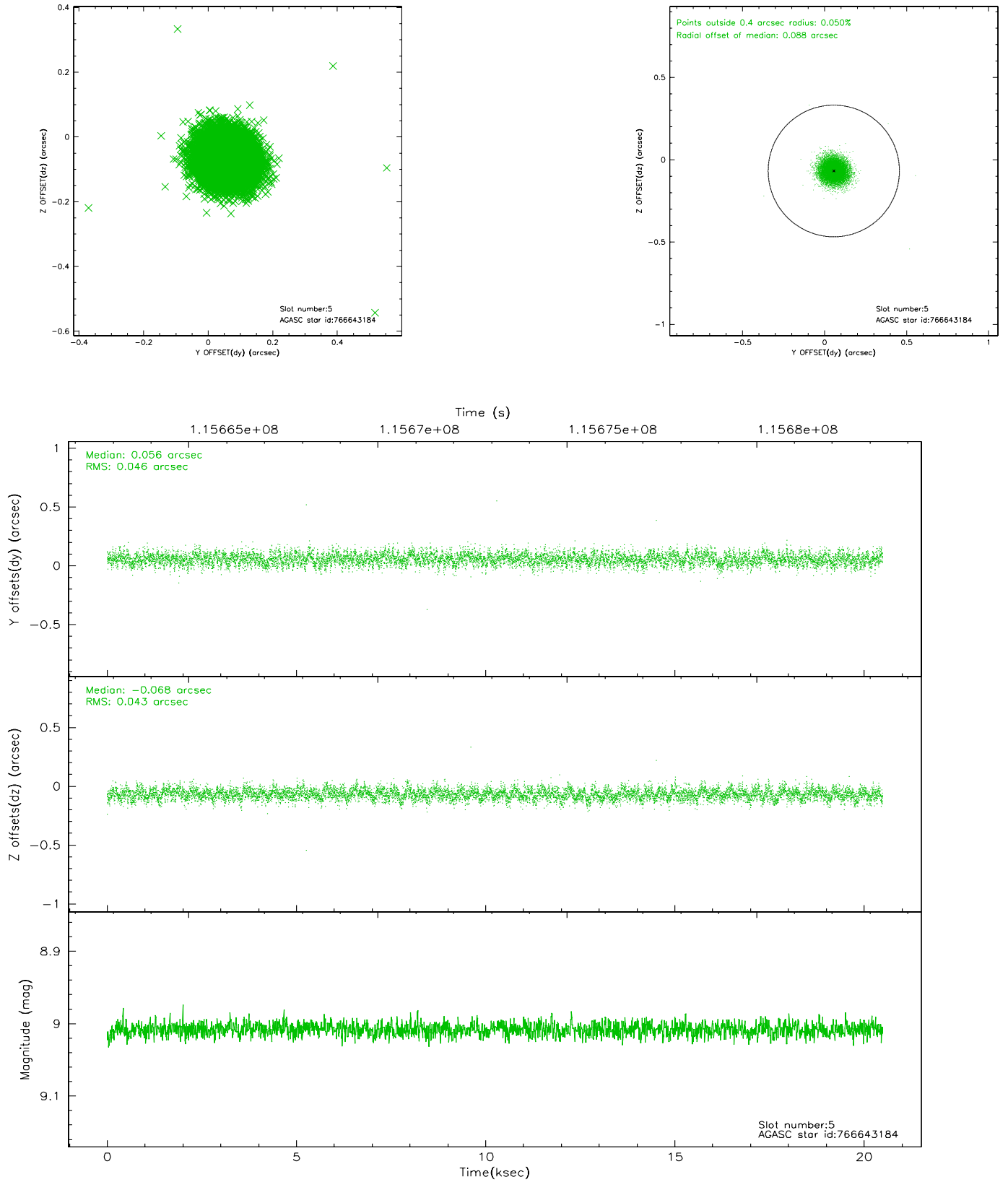
2.4.1 Slot 3



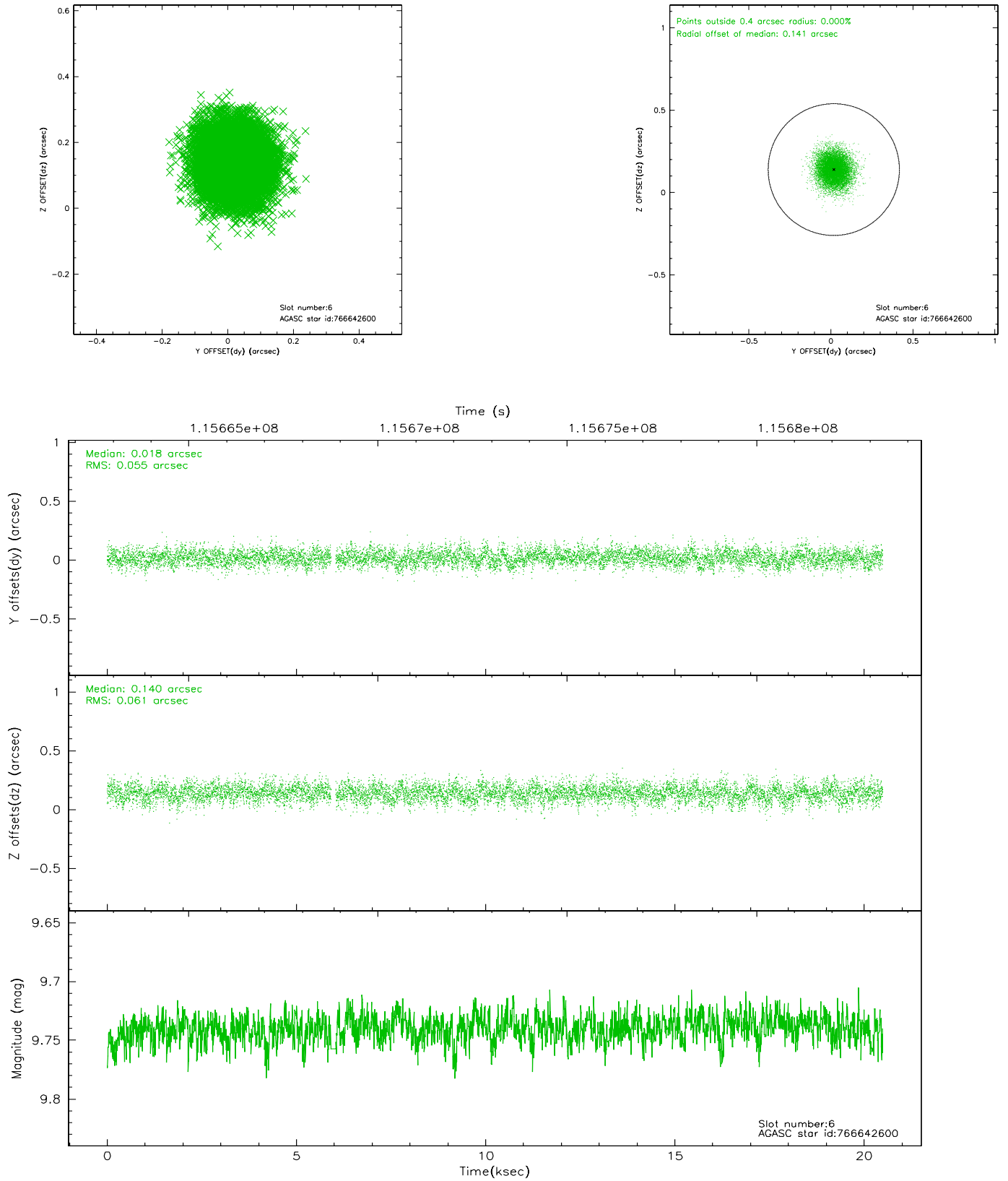
2.4.2 Slot 4



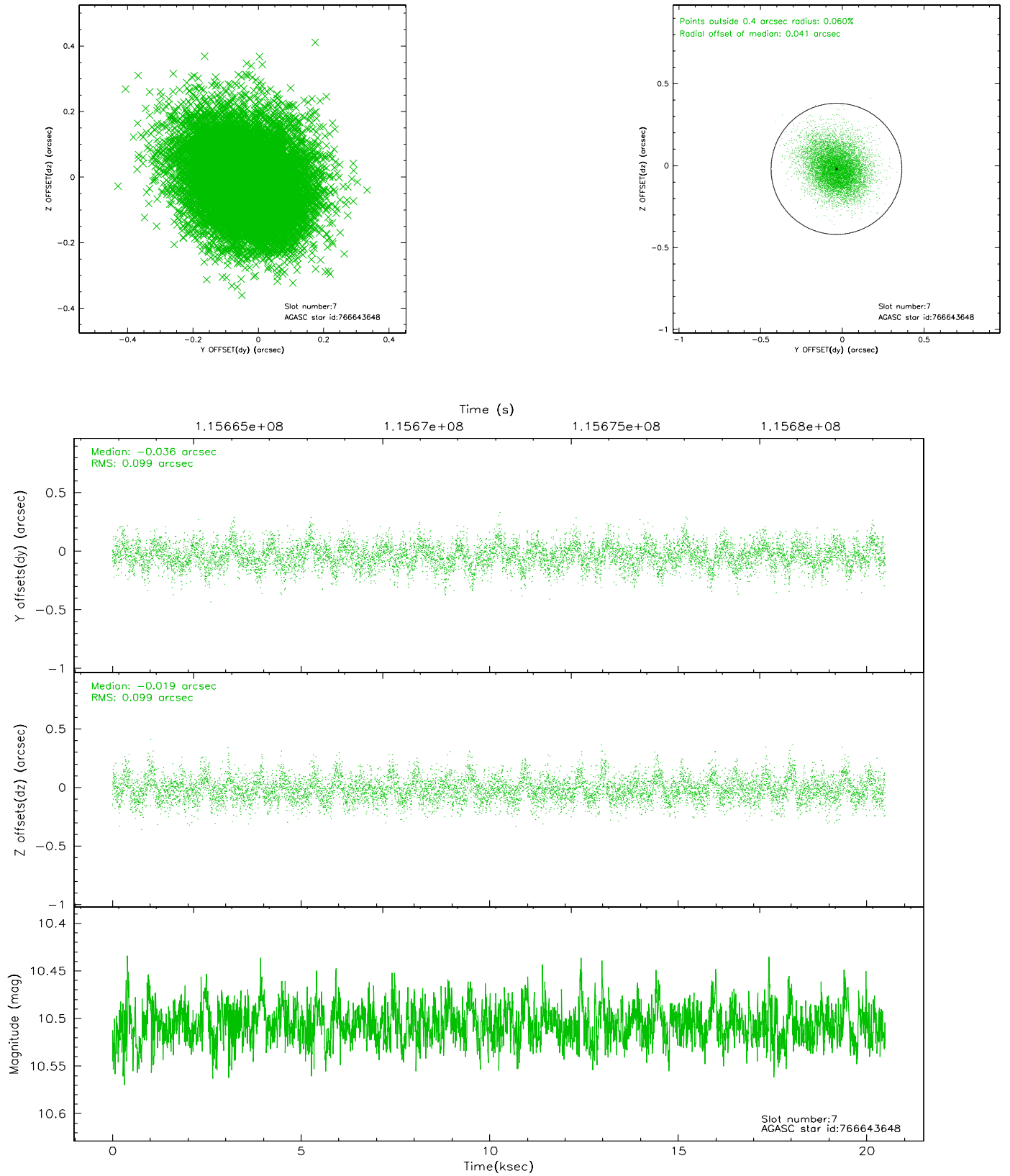
2.4.3 Slot 5



2.4.4 Slot 6

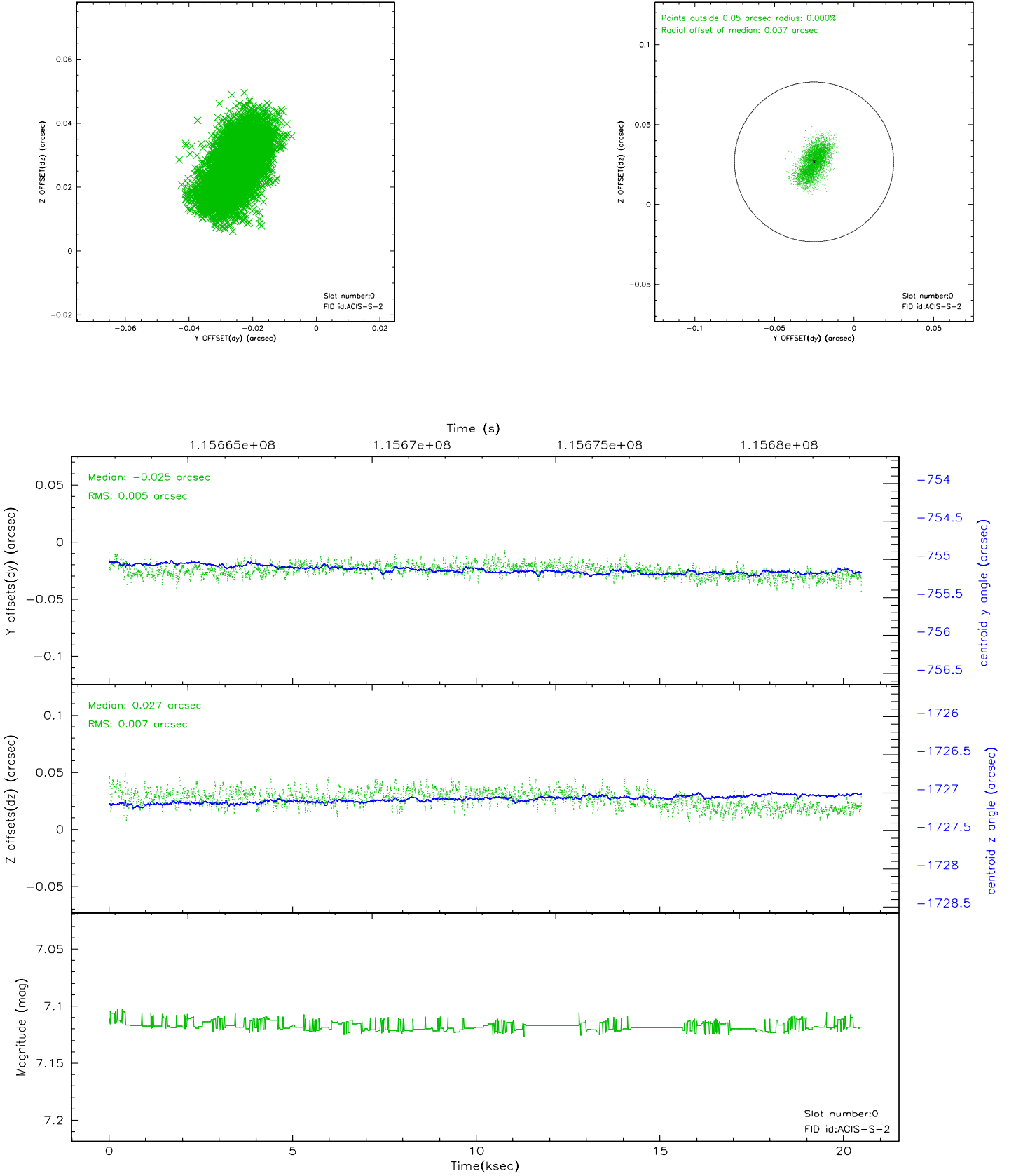


2.4.5 Slot 7

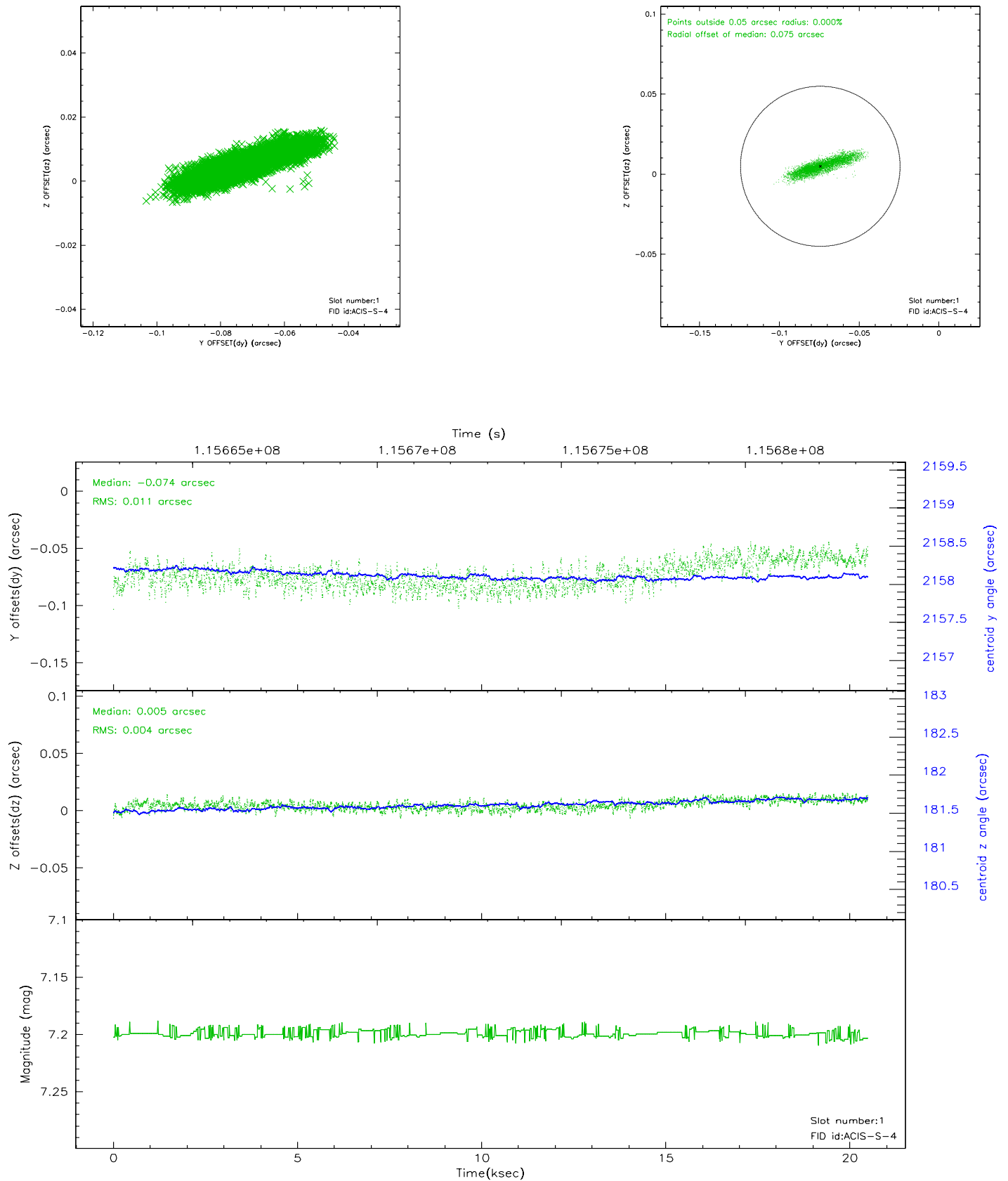


2.5 FID Slots

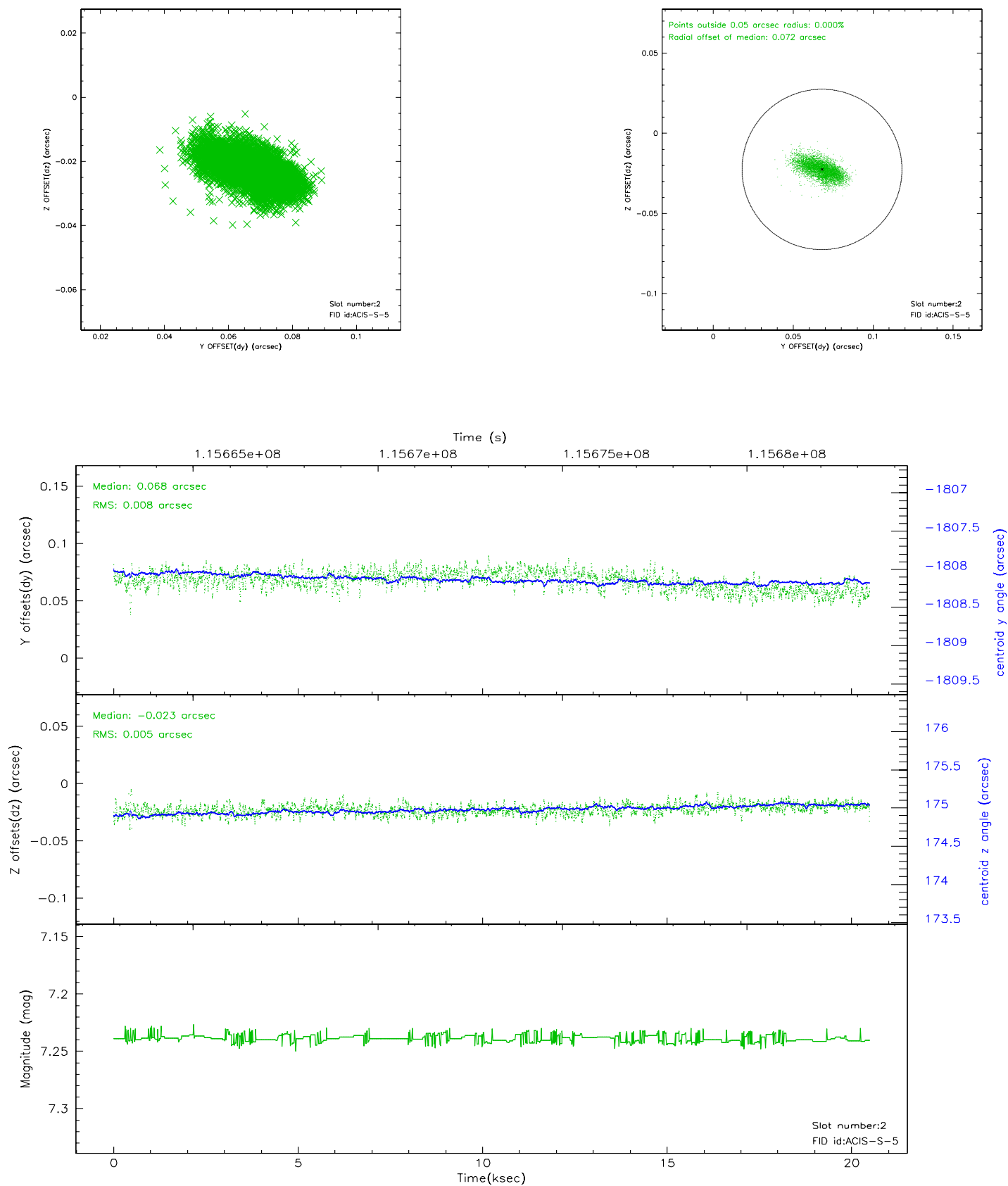
2.5.1 Slot 0



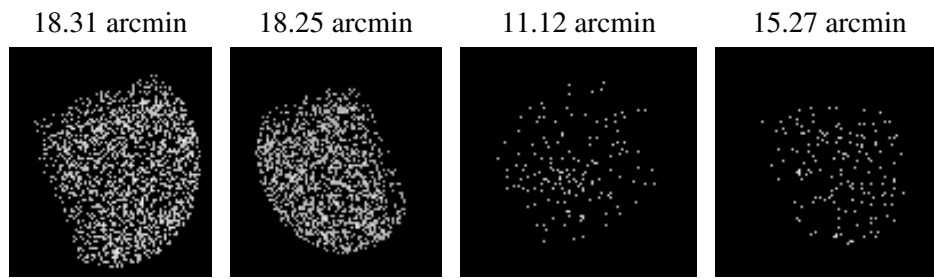
2.5.2 Slot 1



2.5.3 Slot 2



3 Point Sources



A Summary

A.1 Status

V&V Scientist	Jen Lauer
V&V Date (YYYY-MM-DD)	2006.12.22
V&V Edition	1
V&V Disposition and Status	OK
V&V Charge Time	20.459

A.2 Comments