

# V&V Reference Report

## L2 ASCDS Version : 7.6.9

Observation 2182 - L2 Version 001  
Chandra X-Ray Center

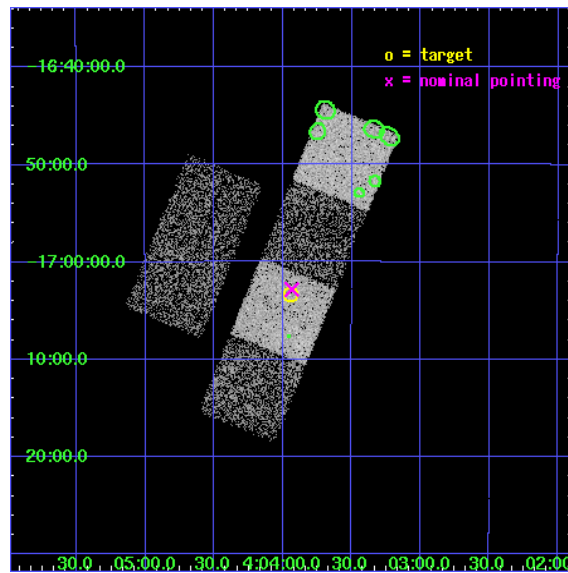
L2 Processing Date : Dec 15 2006

## Contents

<b>1</b>	<b>Front</b>	<b>2</b>
<b>2</b>	<b>OBI</b>	<b>3</b>
2.1	OBI . . . . .	3
2.1.1	Images . . . . .	3
2.1.2	Bias . . . . .	3
2.1.3	Parameters . . . . .	4
2.1.4	Events . . . . .	4
2.2	Compared Parameters . . . . .	5
2.3	Aspect . . . . .	6
2.4	Star Slots . . . . .	9
2.4.1	Slot 3 . . . . .	9
2.4.2	Slot 4 . . . . .	10
2.4.3	Slot 5 . . . . .	11
2.4.4	Slot 6 . . . . .	12
2.4.5	Slot 7 . . . . .	13
2.5	FID Slots . . . . .	14
2.5.1	Slot 0 . . . . .	14
2.5.2	Slot 1 . . . . .	15
2.5.3	Slot 2 . . . . .	16
<b>3</b>	<b>Point Sources</b>	<b>17</b>
<b>A</b>	<b>Summary</b>	<b>18</b>
A.1	Status . . . . .	18
A.2	Comments . . . . .	18

# 1 Front

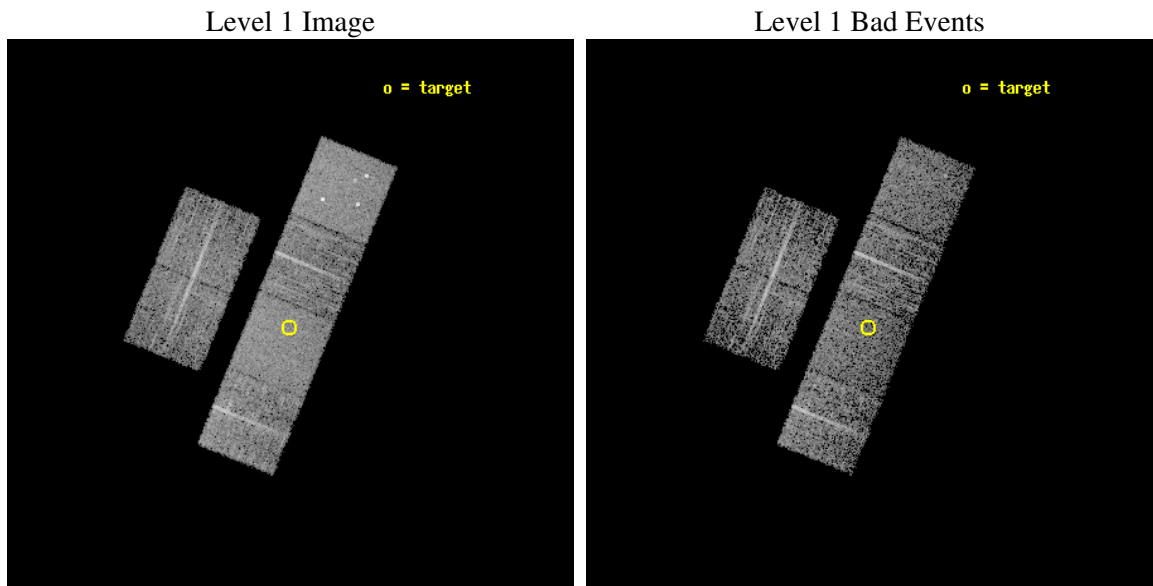
seq_num	700372
obs_id	2182
title	SURVEY OF RADIO QUIET Z>4 QUASARS
observer	Dr. Jill Bechtold
object	BRI 0401-1711
dtcycle	0
cycle	P
ra_targ	60.985833
dec_targ	-17.056667
ra_nom	60.983735255143
dec_nom	-17.047166859502
roll_nom	112.1948051896
revision	3
ontime	3888.000003621
livedtime	3838.7678065026
ontime2	3888.000003621
ontime3	3888.000003621
ontime5	3888.000003621
ontime6	3888.000003621
ontime7	3888.000003621
ontime8	3888.000003621
l2events	38385



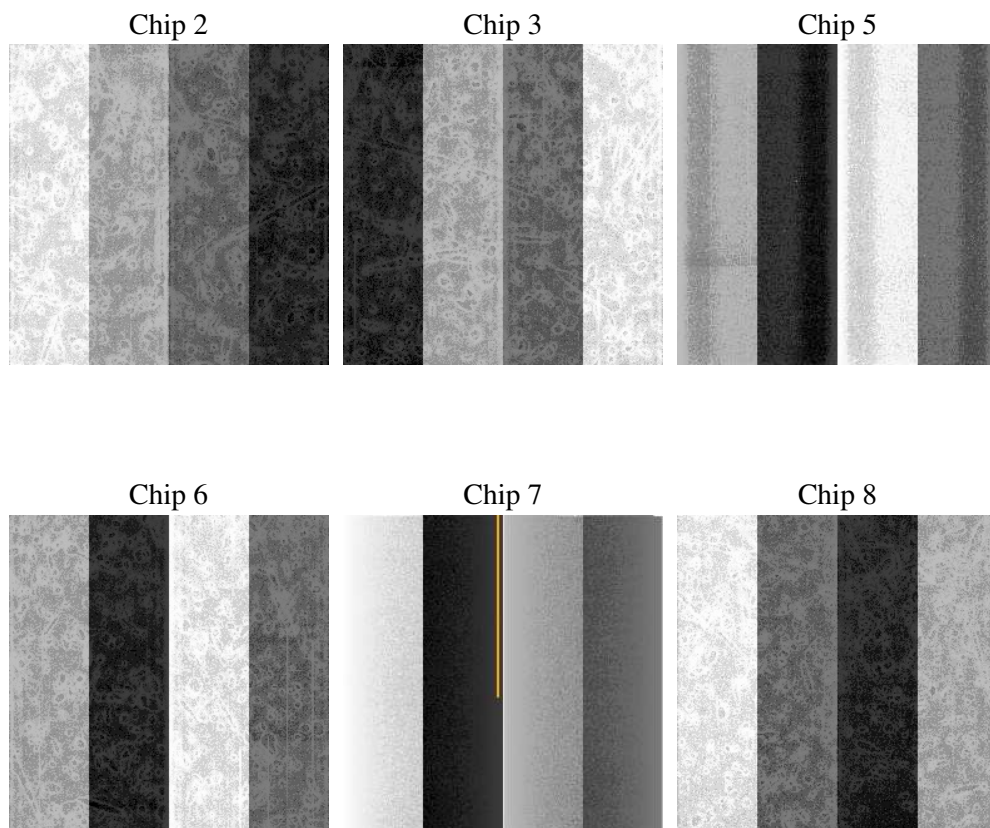
## 2 OBI

### 2.1 OBI

#### 2.1.1 Images



#### 2.1.2 Bias



### 2.1.3 Parameters

obi_num	0
ascdsver	7.6.9
caldsver	3.2.4
date	2006-12-16T02:15:51
revision	3

sched_exp_time	4000.000000
ontime	3895.6794634908
ontime2	3895.6794634908
ontime3	3895.6794634908
ontime5	3895.6794934124
ontime6	3895.6794634908
ontime7	3895.6794634908
ontime8	3895.6794634908
l1events	177235

### 2.1.4 Events

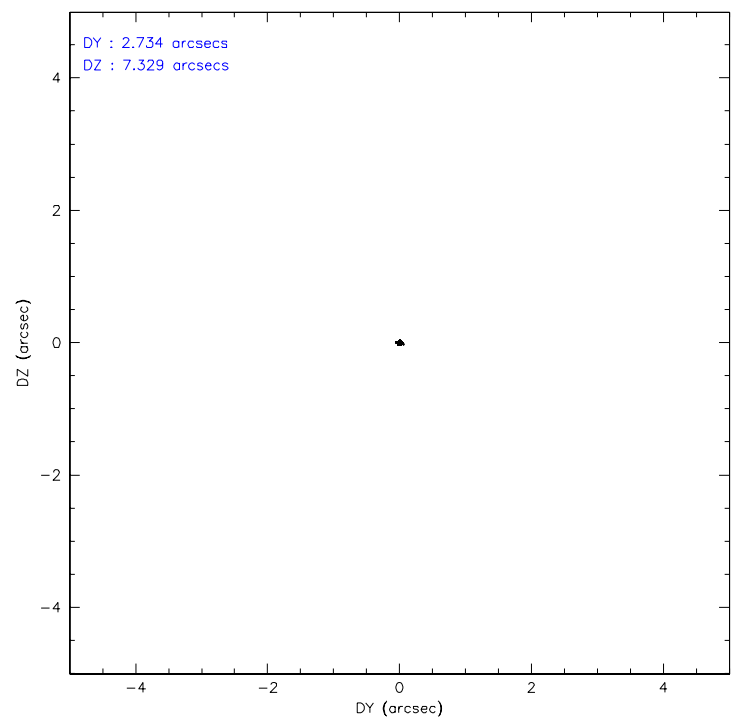
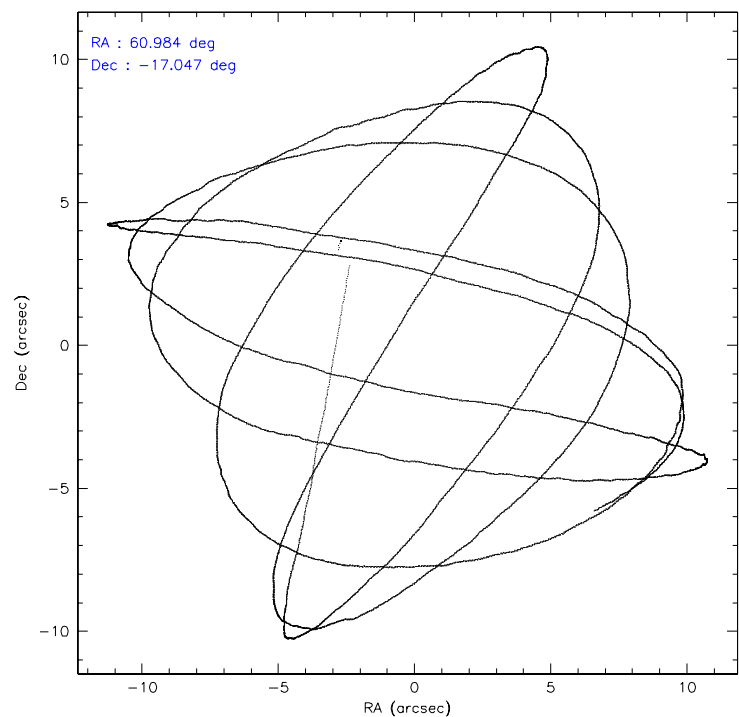
	ccd 2	ccd 3	ccd 5	ccd 6	ccd 7	ccd 8
level 1 events	25809	24011	36861	26065	32868	31621
rejected events	22949	21154	19891	23105	19634	25129
rejected %	88%	88%	53%	88%	59%	79%

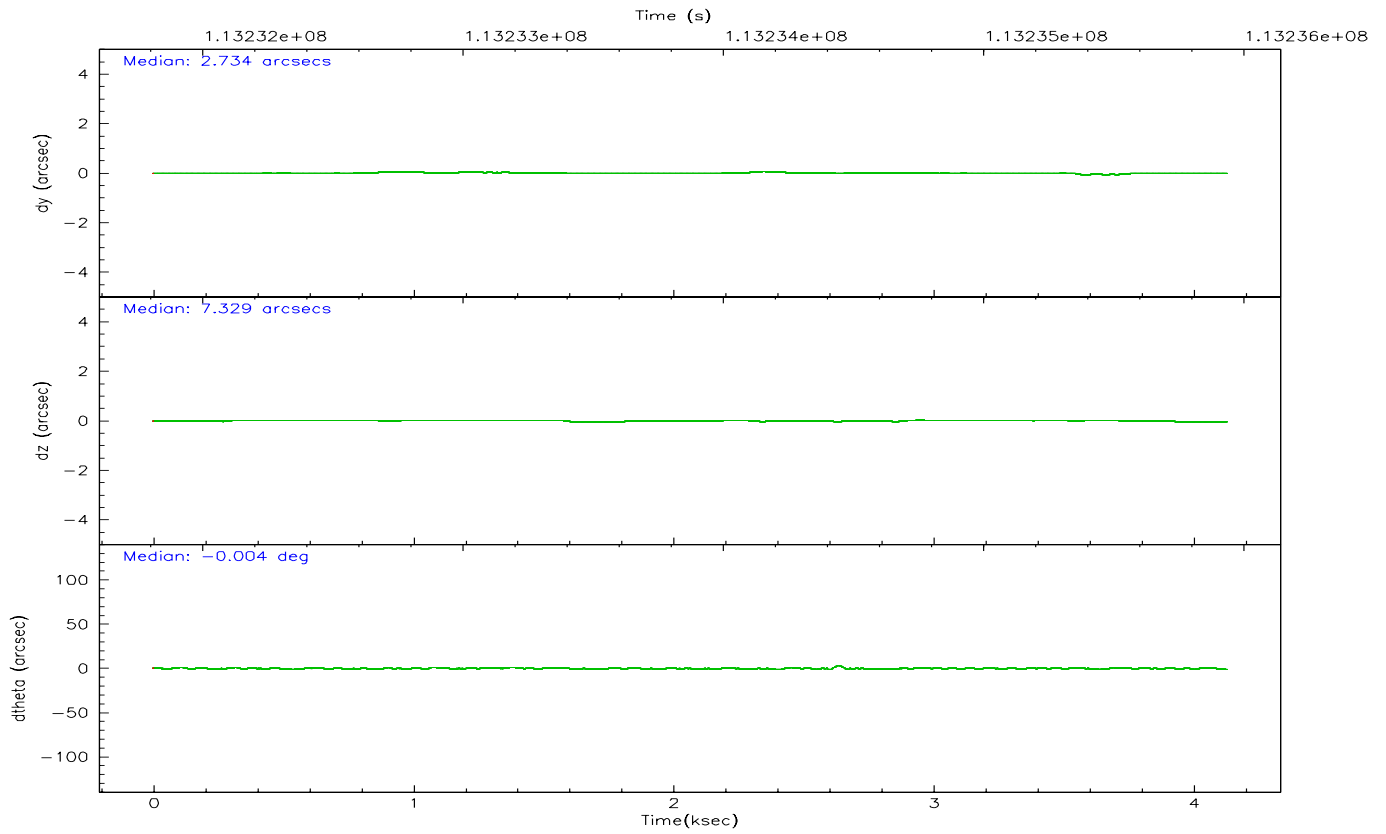
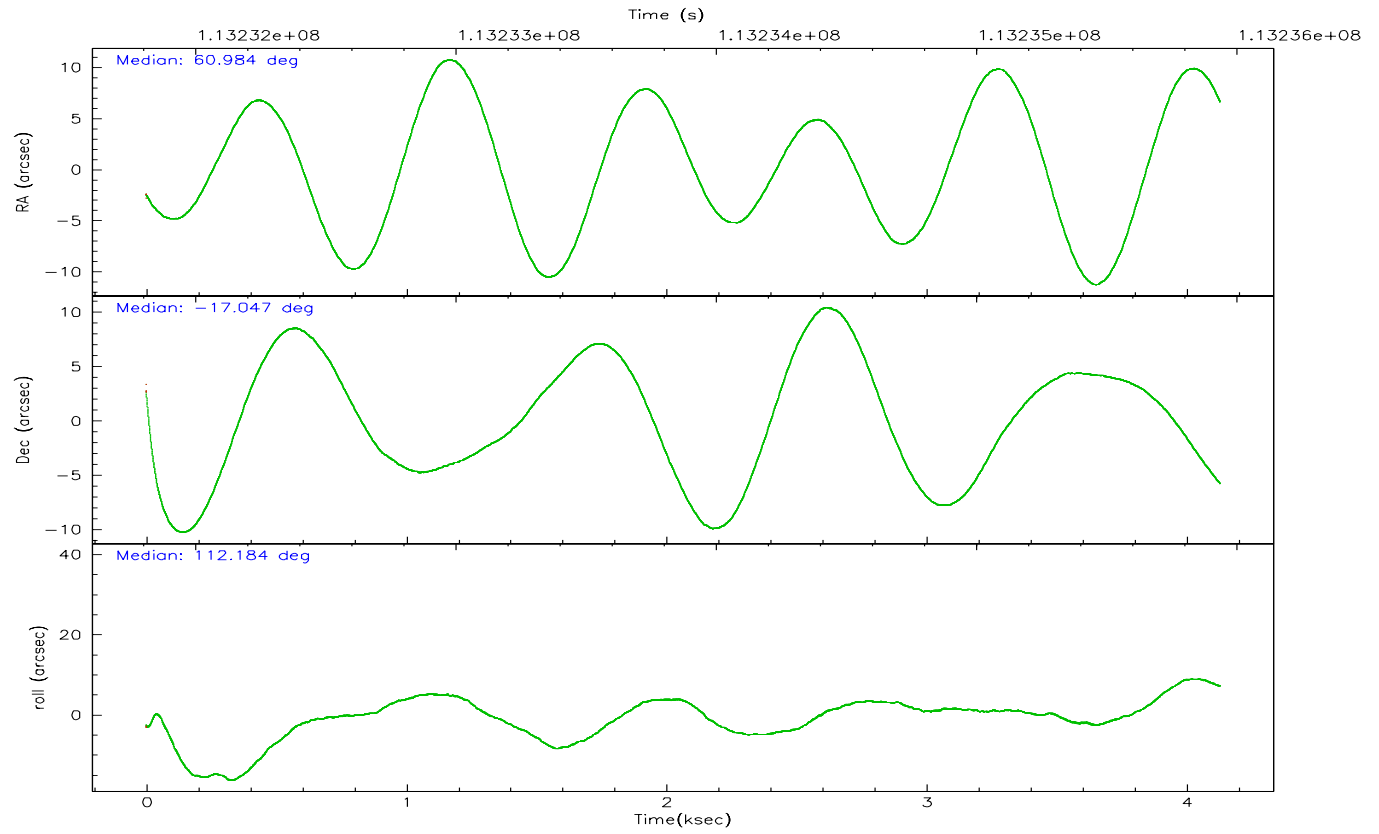
	ccd 2	ccd 3	ccd 5	ccd 6	ccd 7	ccd 8
grade 0 events	1216	1272	2499	1229	1059	2254
	4%	5%	6%	4%	3%	7%
grade 1 events	16	16	87	11	23	14
	0%	0%	0%	0%	0%	0%
grade 2 events	565	542	4808	591	3227	1353
	2%	2%	13%	2%	9%	4%
grade 3 events	254	269	360	271	719	727
	0%	1%	0%	1%	2%	2%
grade 4 events	278	252	388	292	754	668
	1%	1%	1%	1%	2%	2%
grade 5 events	904	983	1759	1064	2163	1356
	3%	4%	4%	4%	6%	4%
grade 6 events	551	528	8946	583	7495	1497
	2%	2%	24%	2%	22%	4%
grade 7 events	22025	20149	18014	22024	17428	23752
	85%	83%	48%	84%	53%	75%

## 2.2 Compared Parameters

Parameter	Planned	Actual	Parameter	Planned	Actual
Instrument	ACIS	ACIS	Obspar format version number	6	6
Detector	ACIS-235678	ACIS-235678	Obspar file type	PREDICTED	ACTUAL
Grating	NONE	NONE	Obspar update status	NONE	UPDATED
Data mode	FAINT	FAINT	Number of optional ACIS chips dropped	0	0
Observation mode	POINTING	POINTING	On-chip summing requested	N	N
Pointing RA	61.006458	60.98373525514344	Subarray requested	NONE	NONE
Pointing Dec	-17.063609	-17.0471668595024	Alternating exposures requested	N	N
Pointing Roll	112.044854	112.1948051895996	Primary exposure time	0.000000	3.2
SIM focus pos (mm)	-0.684267	-0.6828225247311905			
SIM defocus (mm)	0	0.001444936568705701			
SIM translation stage pos (mm)	-190.132523	-190.1400660498719			
SIM translation stage offset (mm)	0	0.00754346686406393			
Observation start time	113231936.184000	113230873.00771			
Observation start date	2001-08-03T13:17:52	2001-08-03T13:01:13			
Observation end time	113235936.184000	113236544.33293			
Observation end date	2001-08-03T14:24:32	2001-08-03T14:35:44			
Read mode	TIMED	TIMED			

### 2.3 Aspect





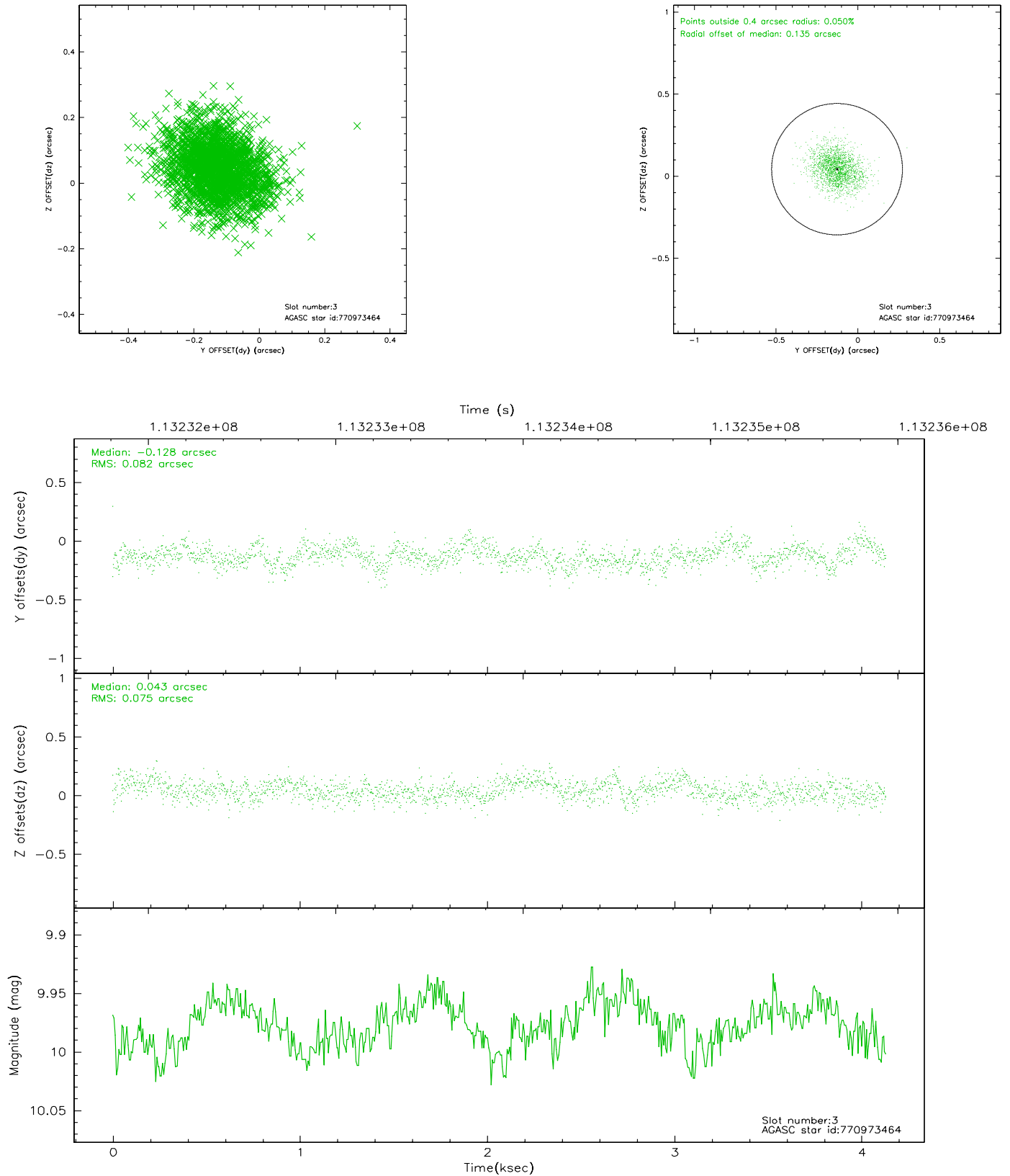
### Slot Statistics

slot	status	id	mag	n_pts	med_dy	med_dz	dr1	dr2	ra	dec	mean_y	mean_z
0	FID	ACIS-S-2	7.11	1008	0.007	0.016	0.007	0.011	0.000000	0.000000	-755.37	-1728.49
1	FID	ACIS-S-4	7.19	1008	-0.085	-0.007	0.005	0.009	0.000000	0.000000	2157.14	178.42
2	FID	ACIS-S-5	7.24	1008	0.048	-0.000	0.006	0.011	0.000000	0.000000	-1806.23	173.81
3	GUIDE	770973464	9.98	2015	-0.128	0.043	0.117	0.192	61.200465	-16.847062	471.85	-911.13
4	GUIDE	770970664	9.88	2015	-0.052	-0.021	0.113	0.181	61.298394	-16.835022	385.35	-1240.59
5	GUIDE	770971360	6.06	2016	-0.306	0.105	0.089	0.137	61.036289	-16.588727	1546.25	-736.59
6	GUIDE	770965552	10.26	2013	0.336	0.100	0.284	0.384	61.332694	-17.212623	-917.49	-837.83
7	GUIDE	771368272	10.12	2015	0.153	-0.210	0.164	0.261	60.621108	-17.695027	-1612.46	2078.56

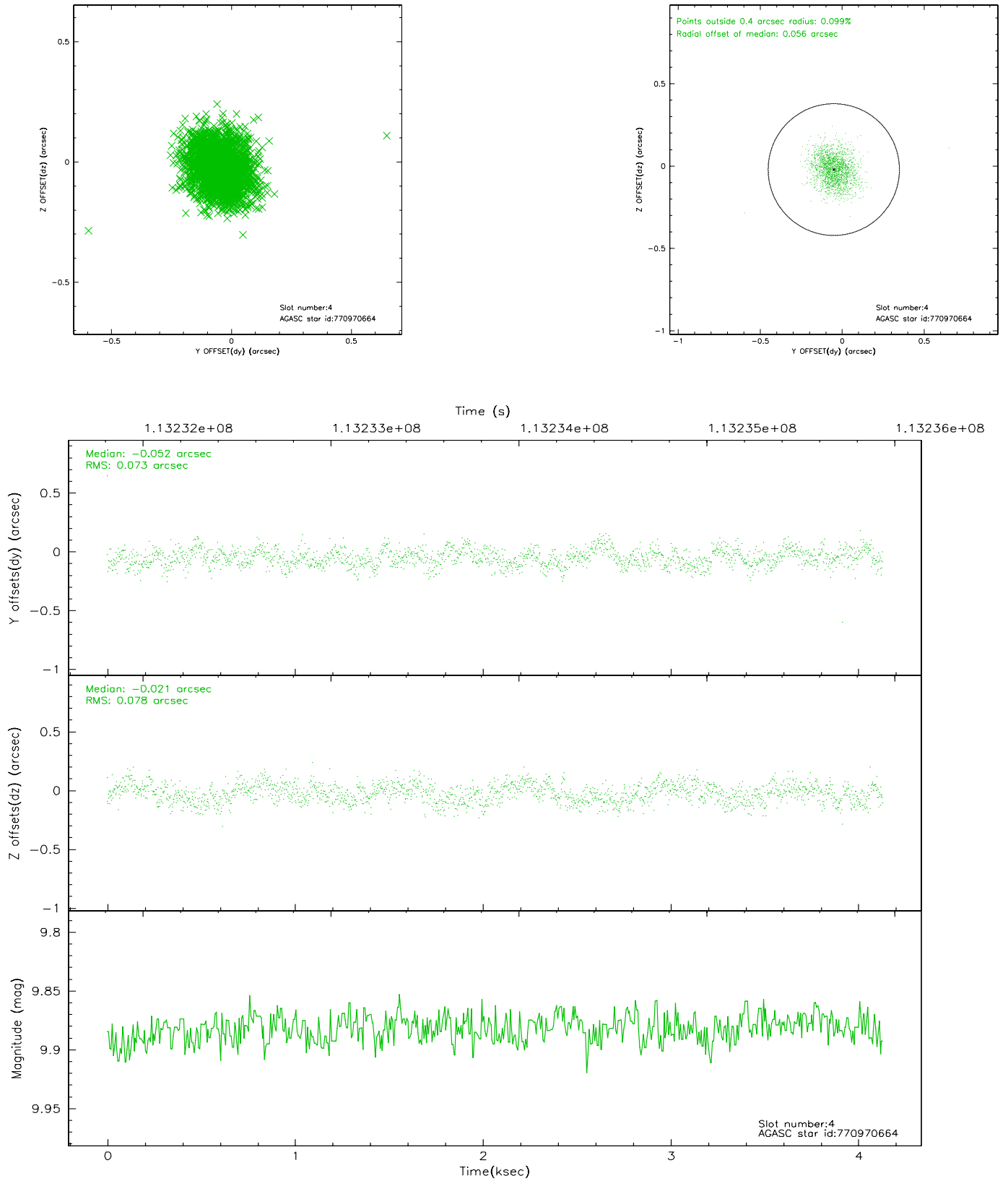


## 2.4 Star Slots

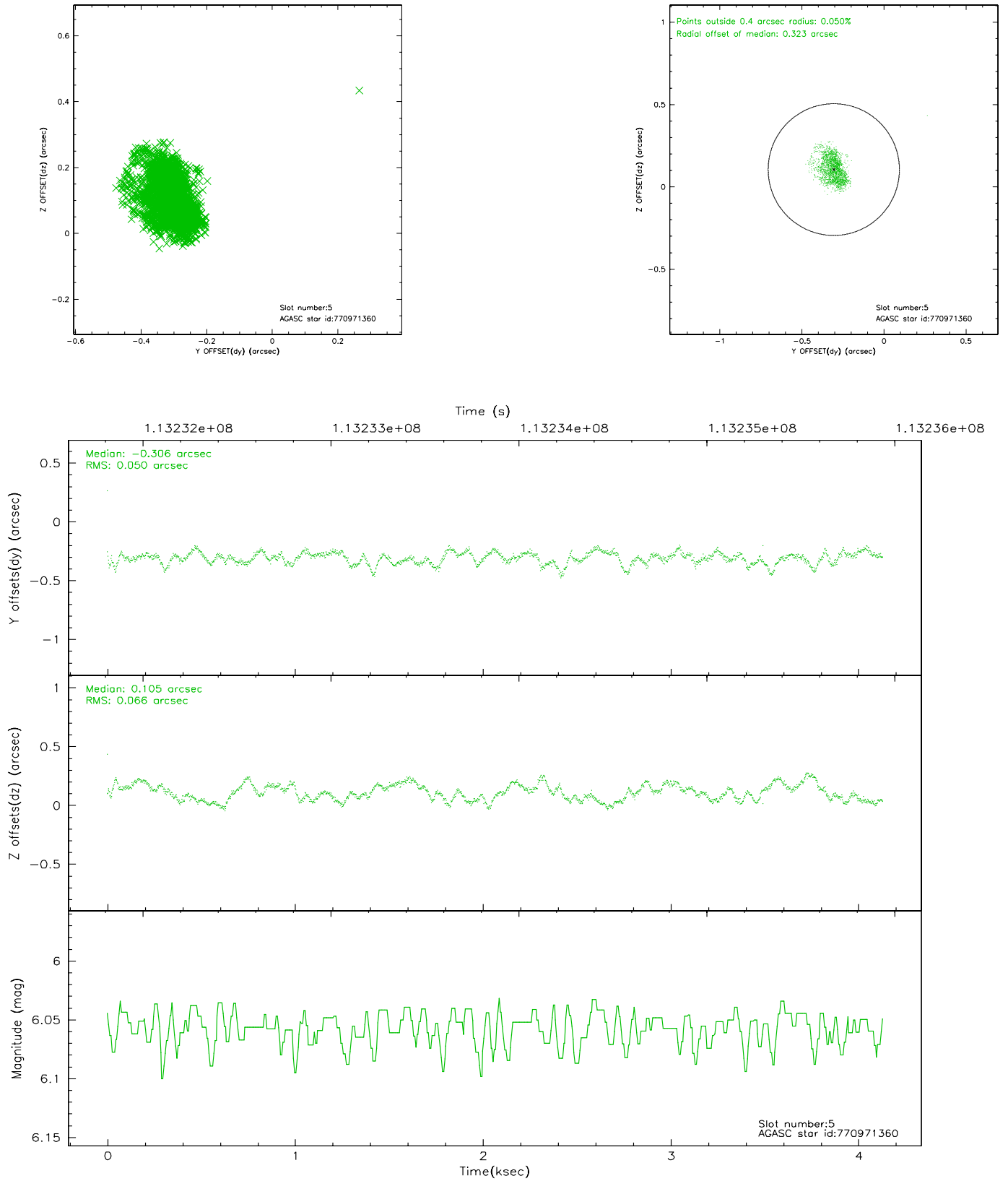
### 2.4.1 Slot 3



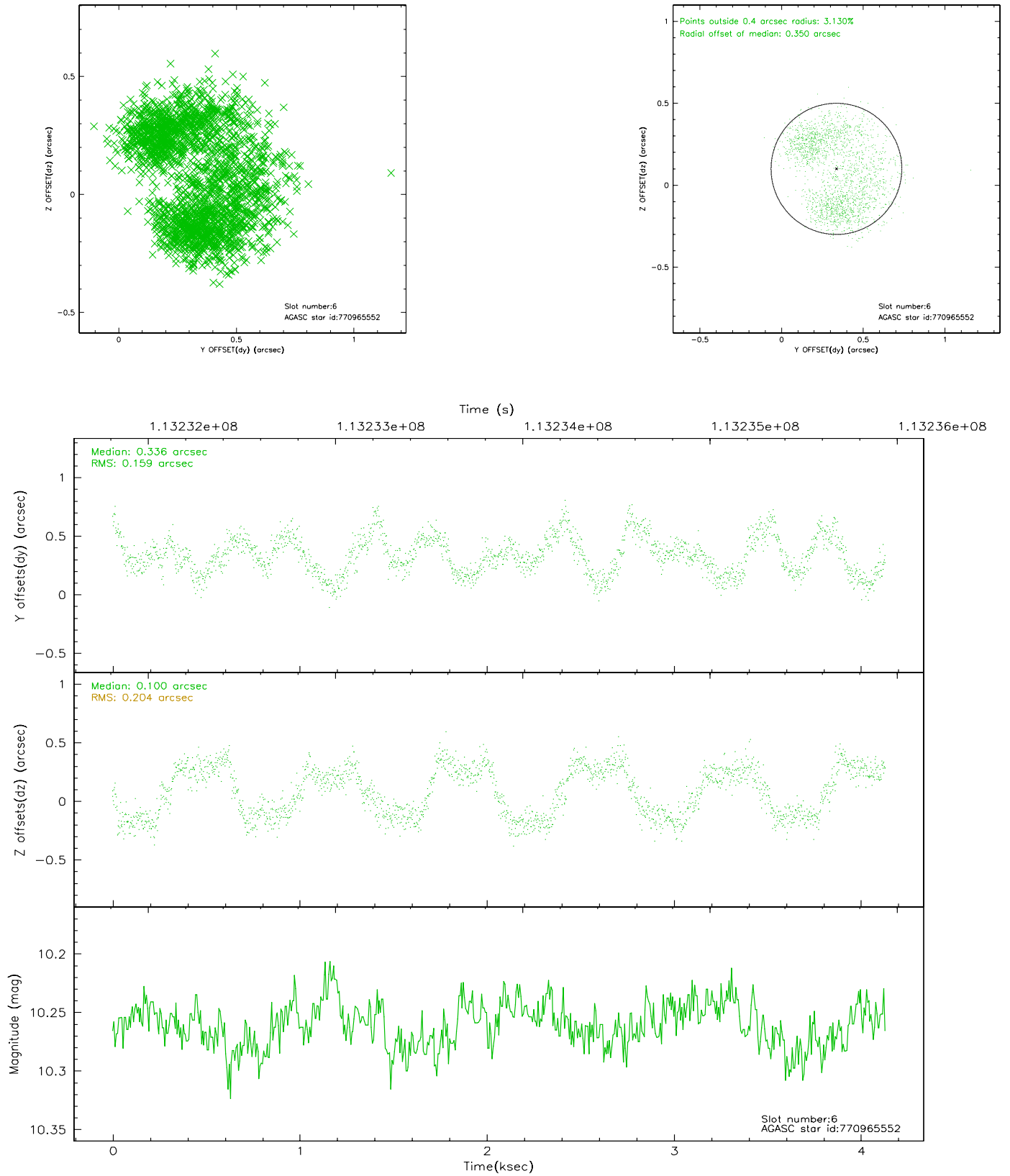
## 2.4.2 Slot 4



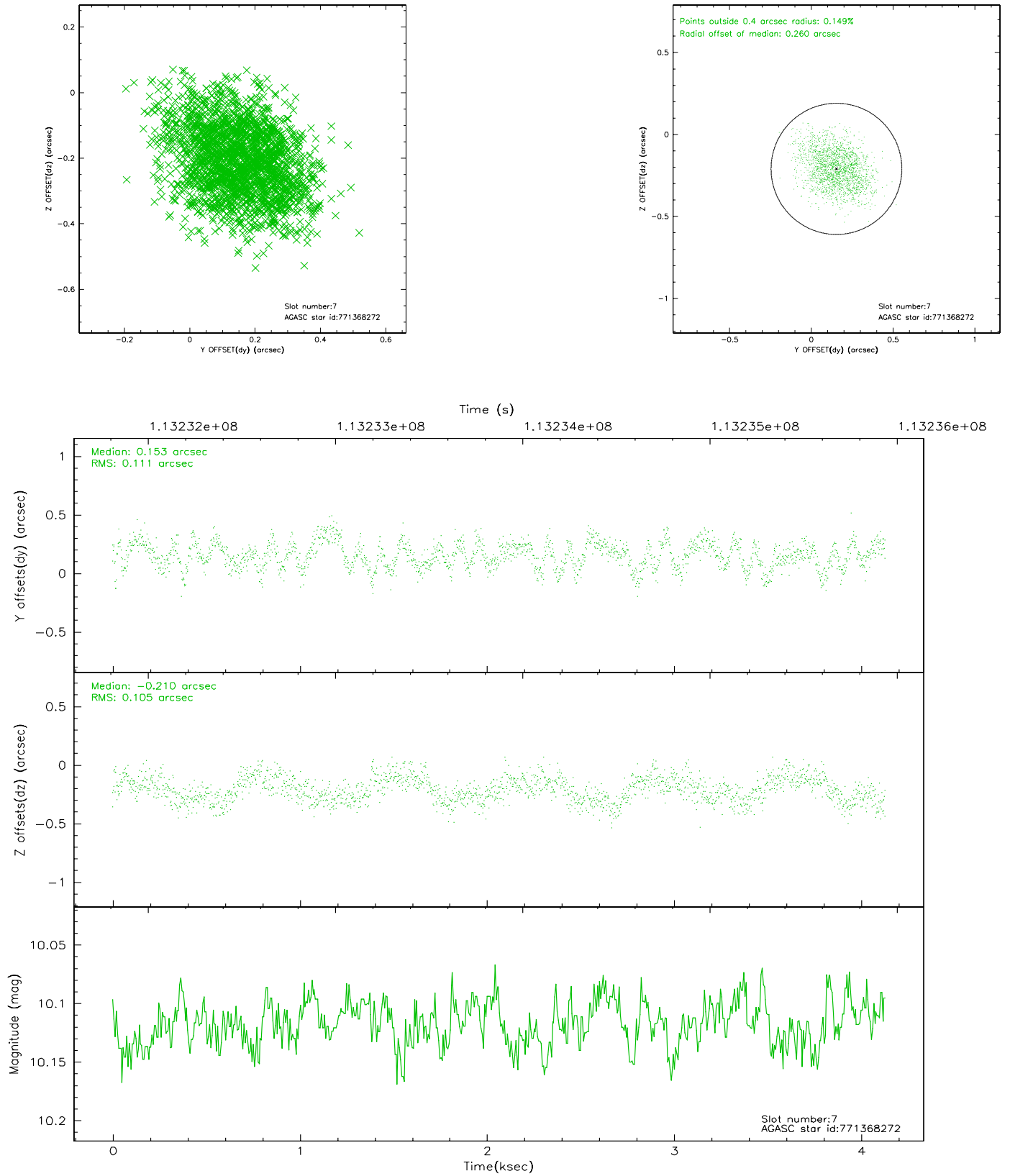
### 2.4.3 Slot 5



## 2.4.4 Slot 6

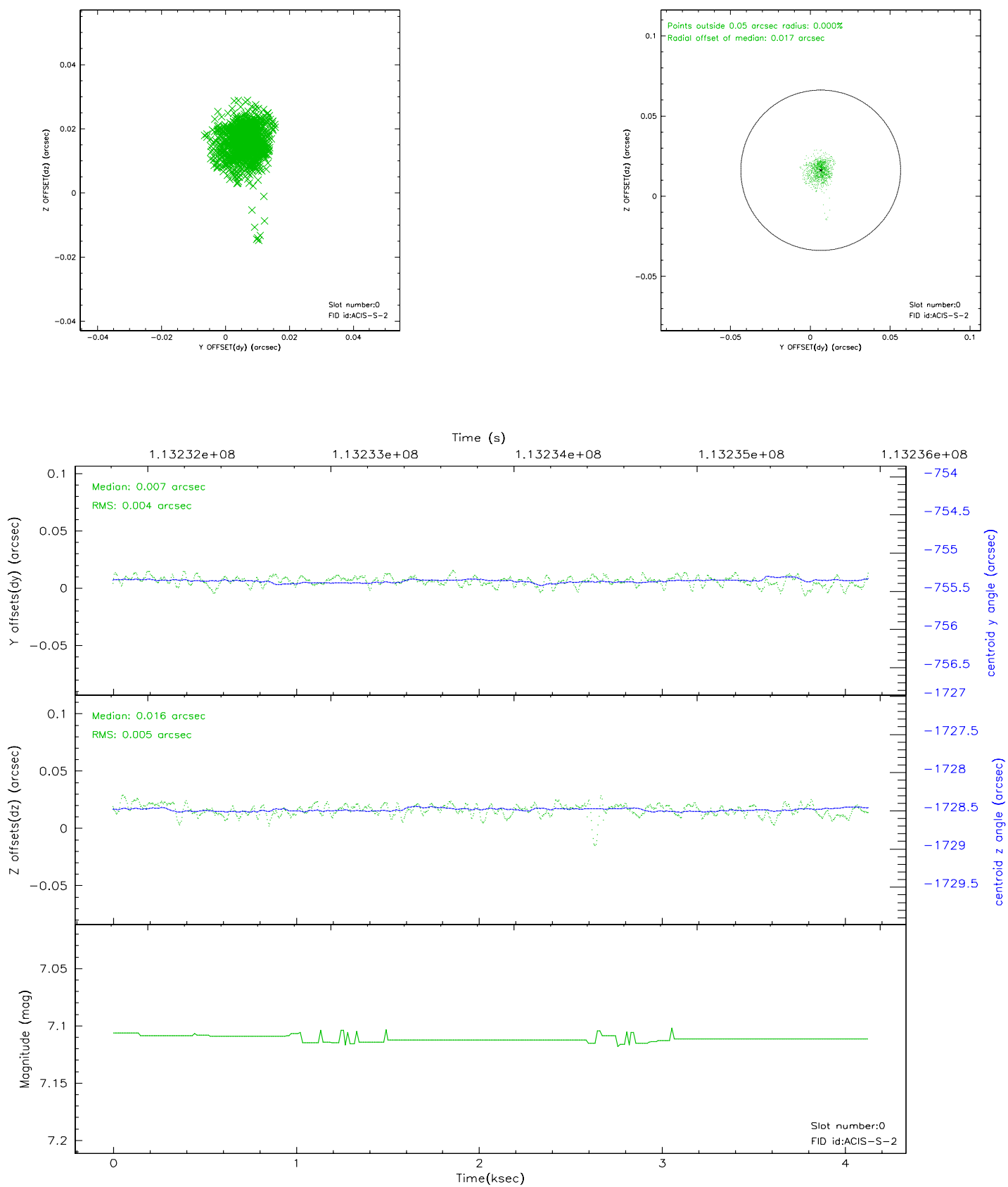


## 2.4.5 Slot 7

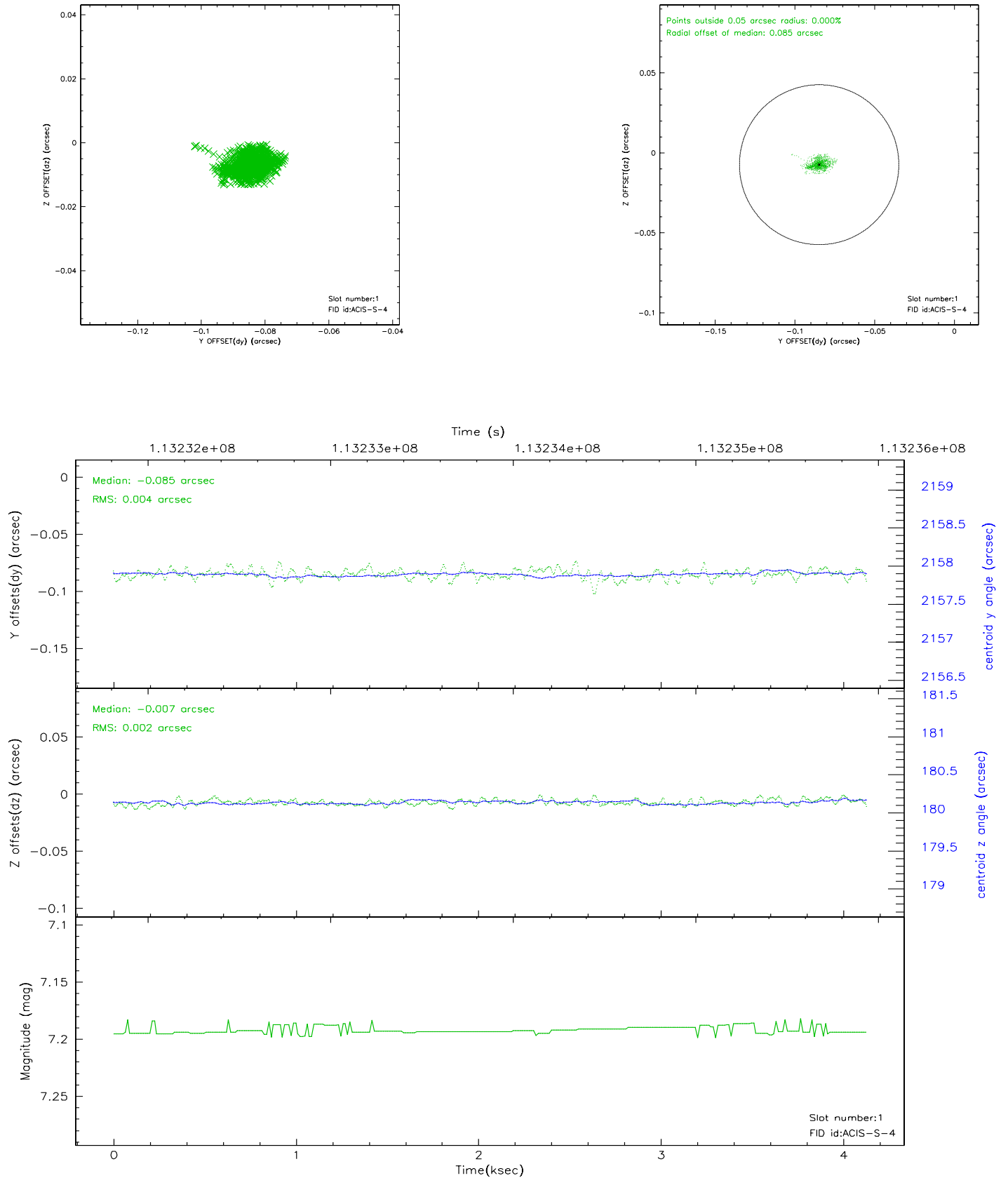


## 2.5 FID Slots

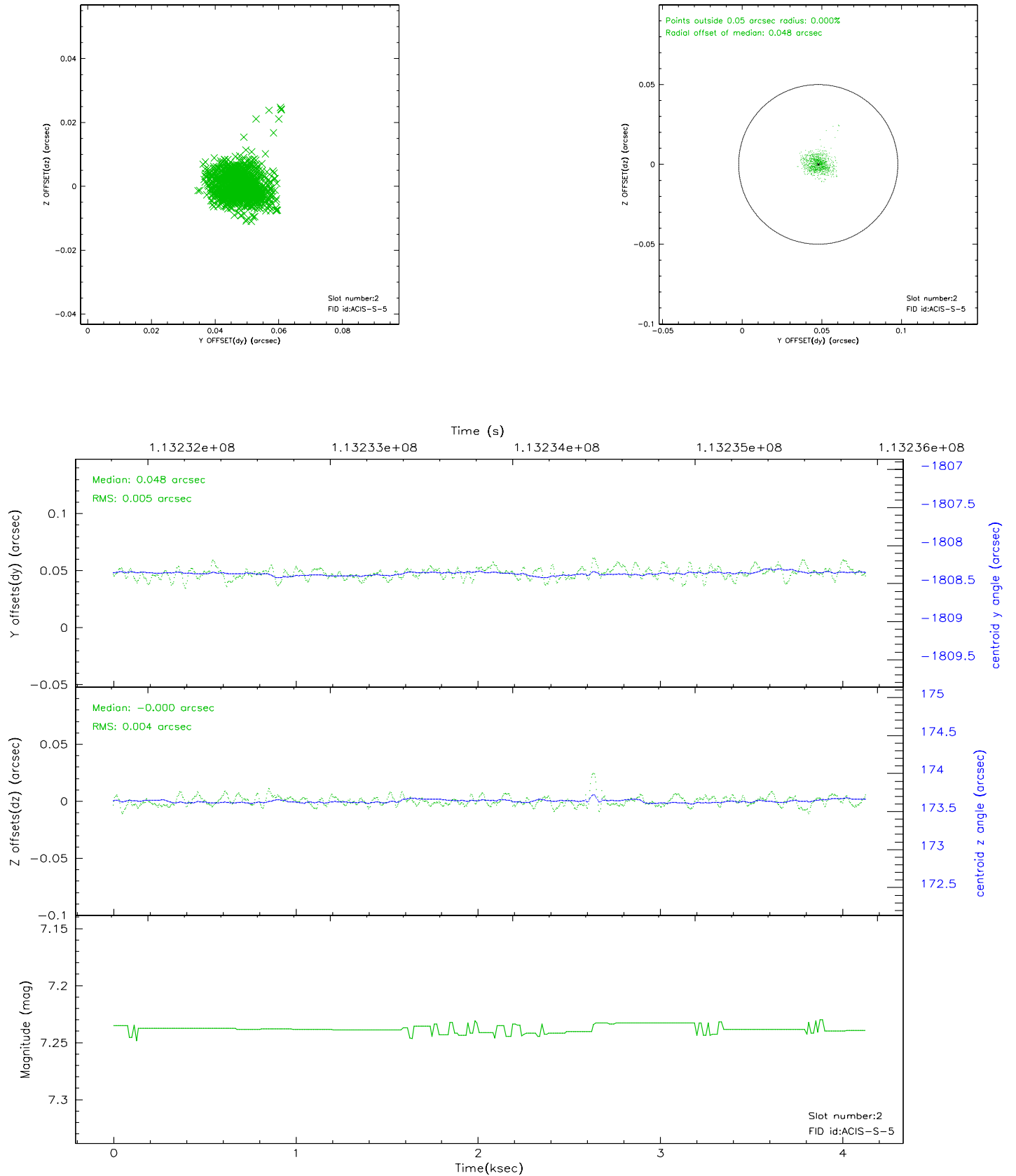
### 2.5.1 Slot 0



## 2.5.2 Slot 1

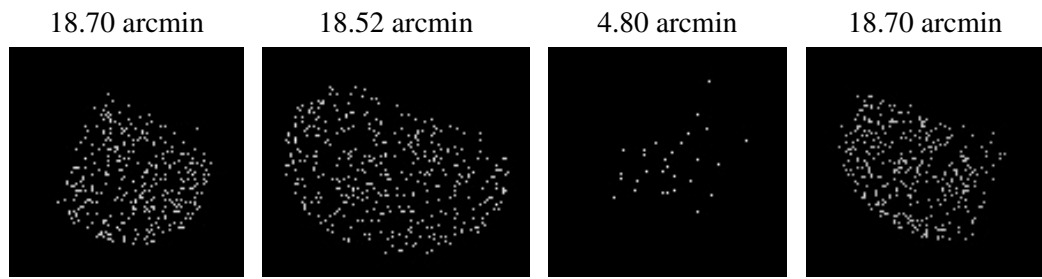


### 2.5.3 Slot 2





### 3 Point Sources



## A Summary

### A.1 Status

V&V Scientist	Beth Sundheim
V&V Date (YYYY-MM-DD)	2006.12.17
V&V Edition	1
V&V Disposition and Status	OK
V&V Charge Time	3.891

### A.2 Comments