

# V&V Reference Report

## L2 ASCDS Version : 7.6.9

Observation 2112 - L2 Version 001  
Chandra X-Ray Center

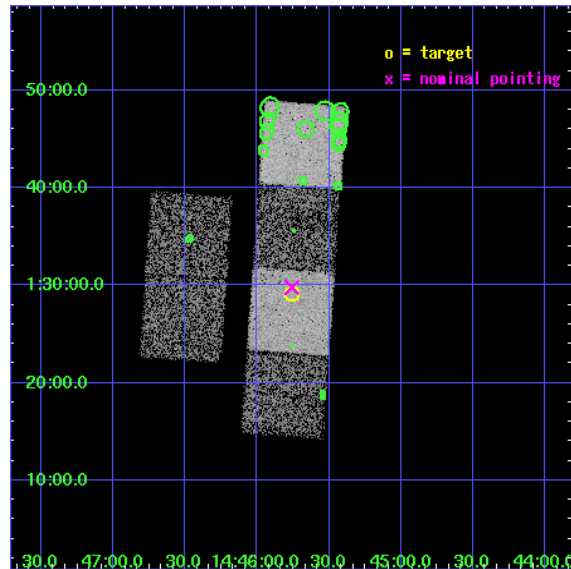
L2 Processing Date : Nov 15 2006

## Contents

<b>1</b>	<b>Front</b>	<b>2</b>
<b>2</b>	<b>OBI</b>	<b>3</b>
2.1	OBI . . . . .	3
2.1.1	Images . . . . .	3
2.1.2	Bias . . . . .	3
2.1.3	Parameters . . . . .	4
2.1.4	Events . . . . .	4
2.2	Compared Parameters . . . . .	5
2.3	Aspect . . . . .	6
2.4	Star Slots . . . . .	9
2.4.1	Slot 3 . . . . .	9
2.4.2	Slot 4 . . . . .	10
2.4.3	Slot 5 . . . . .	11
2.4.4	Slot 6 . . . . .	12
2.4.5	Slot 7 . . . . .	13
2.5	FID Slots . . . . .	14
2.5.1	Slot 0 . . . . .	14
2.5.2	Slot 1 . . . . .	15
2.5.3	Slot 2 . . . . .	16
<b>3</b>	<b>Point Sources</b>	<b>17</b>
<b>A</b>	<b>Summary</b>	<b>18</b>
A.1	Status . . . . .	18
A.2	Comments . . . . .	18

# 1 Front

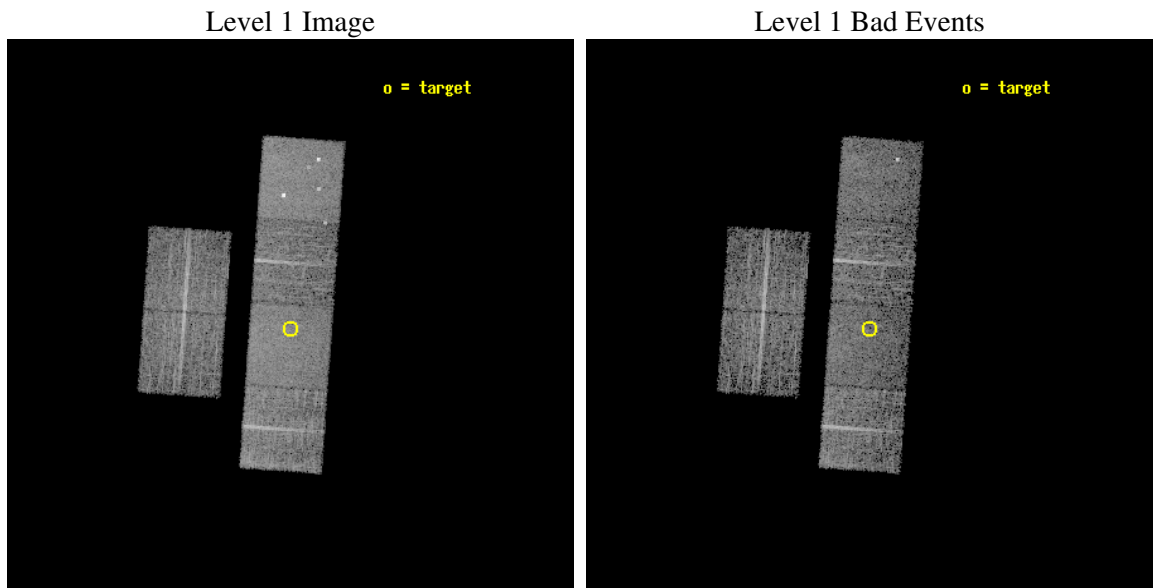
seq_num	700302
obs_id	2112
title	PUBLIC OBSERVATIONS OF A WELL-DEFINED SAMPLE OF BAL QSOS FROM THE LARGE BRIGHT QUASAR SURVEY: REMOVING THE BARRIERS
observer	Prof. William Brandt
object	LBQS 1443+0141
dtcycle	0
cycle	P
ra_targ	221.43875
dec_targ	1.486778
ra_nom	221.43980538206
dec_nom	1.4964789126039
roll_nom	94.115630960584
revision	2
ontime	6012.8000055999
livetime	5936.6623114555
ontime2	6012.8000055999
ontime3	6012.7844699621
ontime5	6012.8000055999
ontime6	6012.8000055999
ontime7	6012.8000055999
ontime8	6012.7434299588
l2events	57159



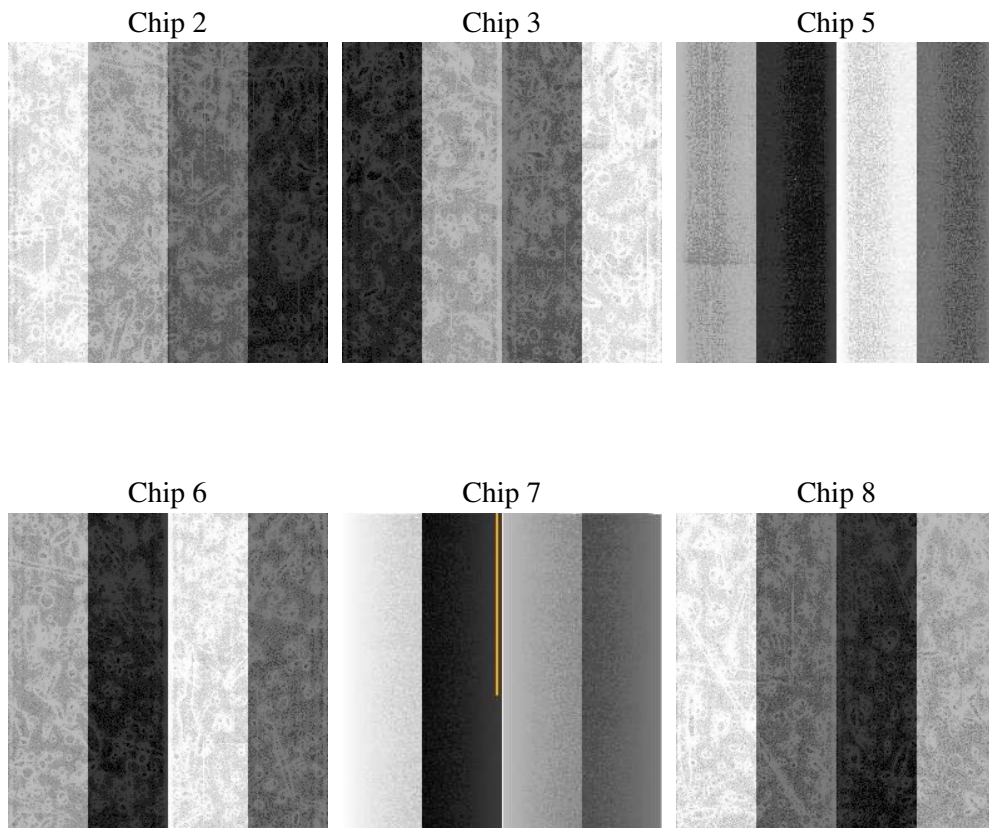
## 2 OBI

### 2.1 OBI

#### 2.1.1 Images



#### 2.1.2 Bias



### 2.1.3 Parameters

obi_num	0
ascdsver	7.6.9
caldbver	3.2.4
date	2006-11-15T21:22:55
revision	2

sched_exp_time	6000.000000
ontime	6015.2939930856
ontime2	6015.2939930856
ontime3	6018.5349832475
ontime5	6018.5349832475
ontime6	6018.5349832475
ontime7	6015.2939930856
ontime8	6018.5349832475
l1events	277547

### 2.1.4 Events

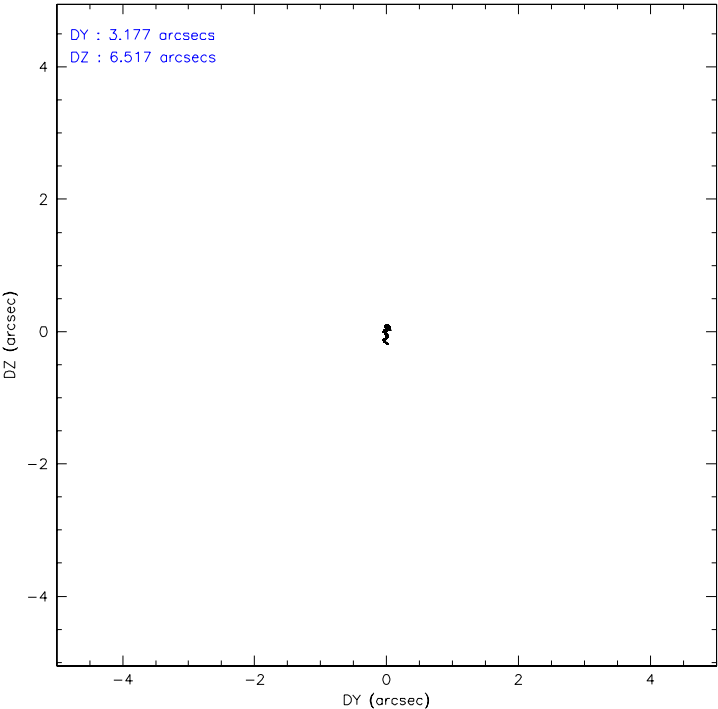
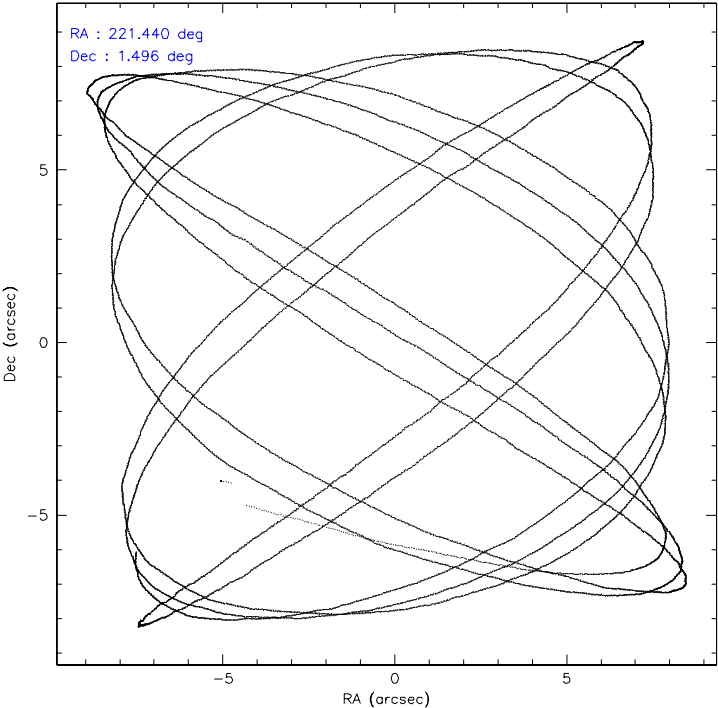
	ccd 2	ccd 3	ccd 5	ccd 6	ccd 7	ccd 8
level 1 events	39753	39013	57975	40033	50324	50449
rejected events	35264	34678	31761	35483	30919	40587
rejected %	88%	88%	54%	88%	61%	80%

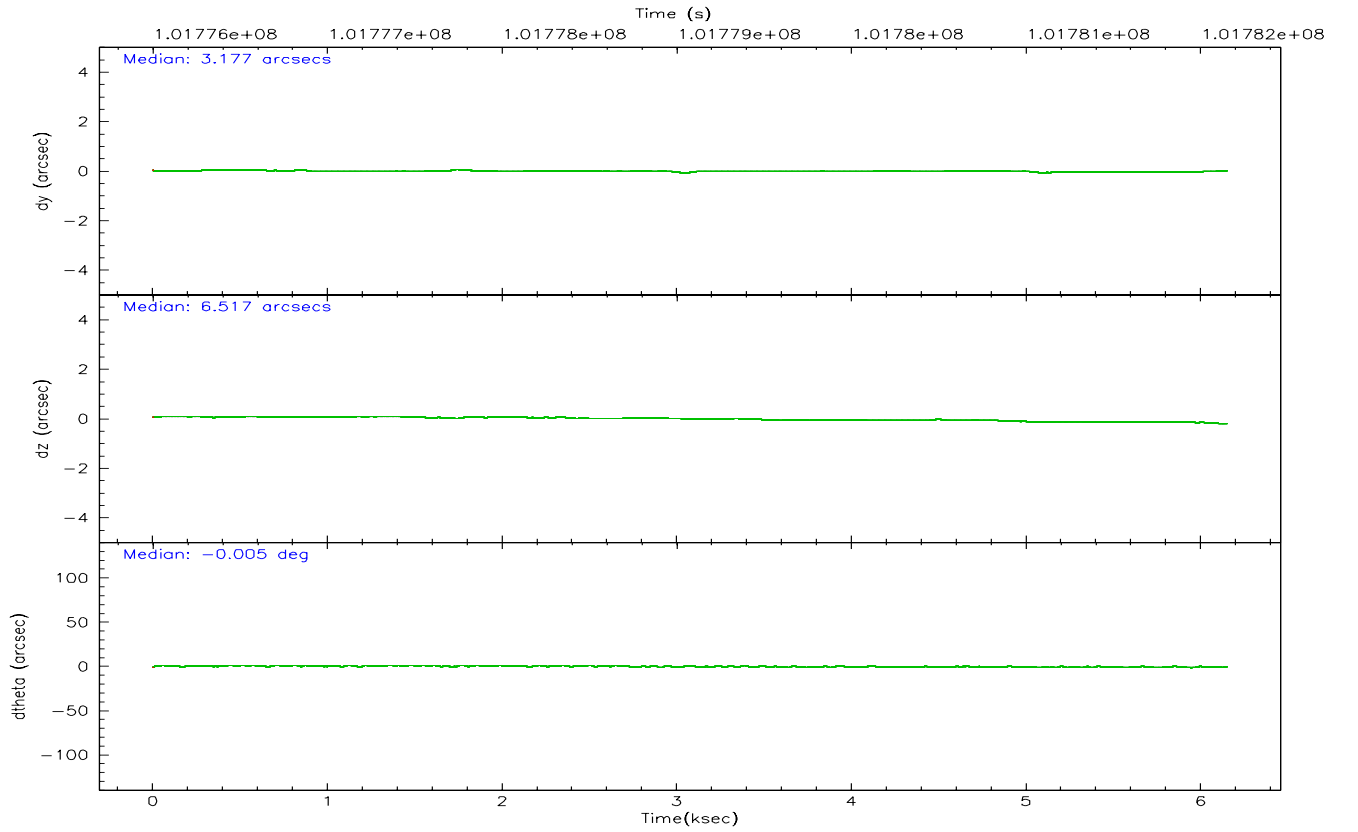
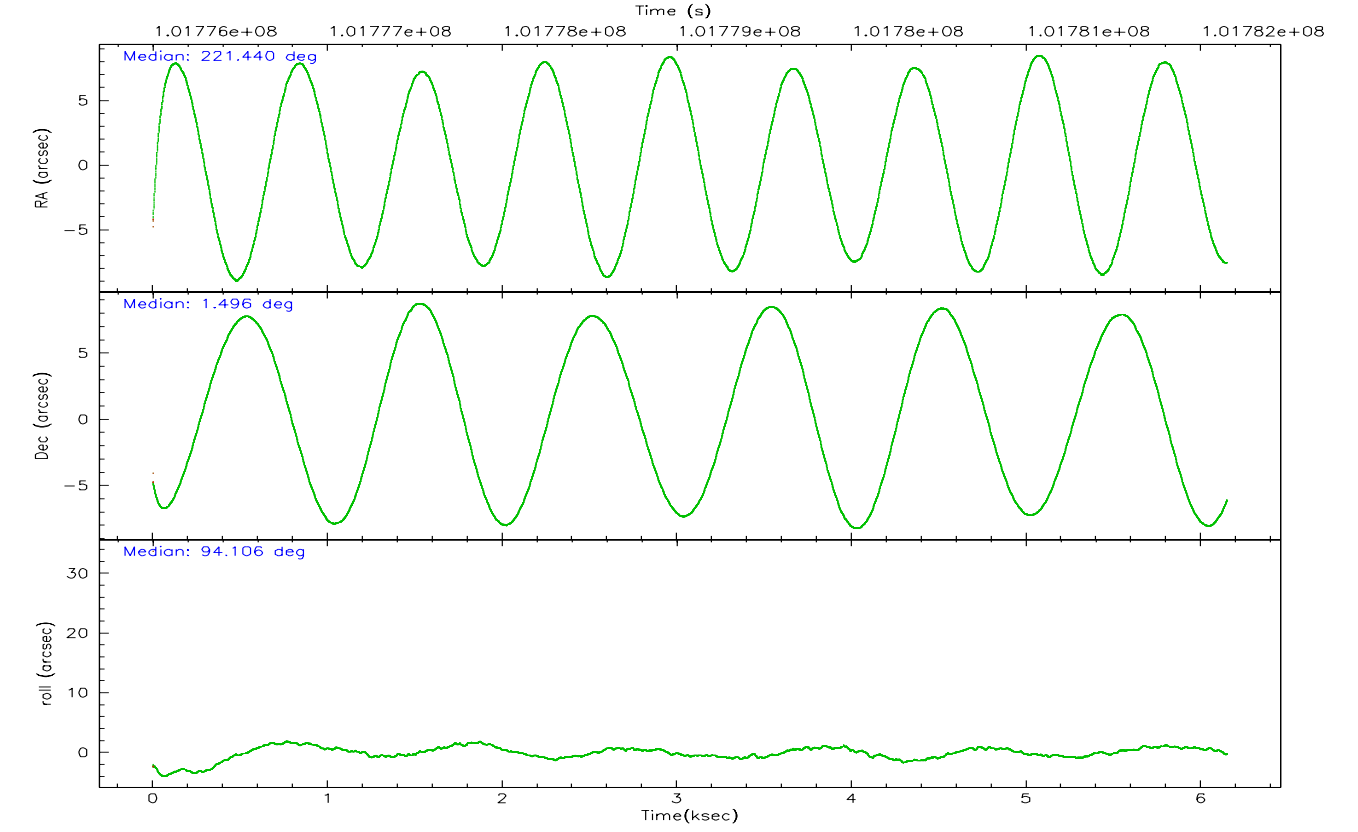
	ccd 2	ccd 3	ccd 5	ccd 6	ccd 7	ccd 8
grade 0 events	2003	1870	3553	1895	1231	3120
	5%	4%	6%	4%	2%	6%
grade 1 events	22	13	46	17	28	29
	0%	0%	0%	0%	0%	0%
grade 2 events	992	823	7608	899	4815	2030
	2%	2%	13%	2%	9%	4%
grade 3 events	378	448	749	451	1012	1051
	0%	1%	1%	1%	2%	2%
grade 4 events	397	424	636	441	1028	989
	0%	1%	1%	1%	2%	1%
grade 5 events	1326	1428	3036	1676	3452	2068
	3%	3%	5%	4%	6%	4%
grade 6 events	723	773	13695	872	11334	2688
	1%	1%	23%	2%	22%	5%
grade 7 events	33912	33234	28652	33782	27424	38474
	85%	85%	49%	84%	54%	76%

## 2.2 Compared Parameters

Parameter	Planned	Actual	Parameter	Planned	Actual
Instrument	ACIS	ACIS	Obspar format version number	6	6
Detector	ACIS-235678	ACIS-235678	Obspar file type	PREDICTED	ACTUAL
Grating	NONE	NONE	Obspar update status	NONE	UPDATED
Data mode	FAINT	FAINT	Number of optional ACIS chips dropped	0	0
Observation mode	POINTING	POINTING	On-chip summing requested	N	N
Pointing RA	221.455343	221.439805382062	Subarray requested	NONE	NONE
Pointing Dec	1.474060	1.496478912603889	Alternating exposures requested	N	N
Pointing Roll	93.958587	94.11563096058393	Primary exposure time	0.000000	3.2
SIM focus pos (mm)	-0.684267	-0.6828225247311905			
SIM defocus (mm)	0	0.001444936568705701			
SIM translation stage pos (mm)	-190.132523	-190.1400660498719			
SIM translation stage offset (mm)	0	0.00754346686406393			
Observation start time	101776154.184000	101775125.08658			
Observation start date	2001-03-23T23:08:10	2001-03-23T22:52:05			
Observation end time	101782154.184000	101782983.76188			
Observation end date	2001-03-24T00:48:10	2001-03-24T01:03:03			
Read mode	TIMED	TIMED			

## 2.3 Aspect





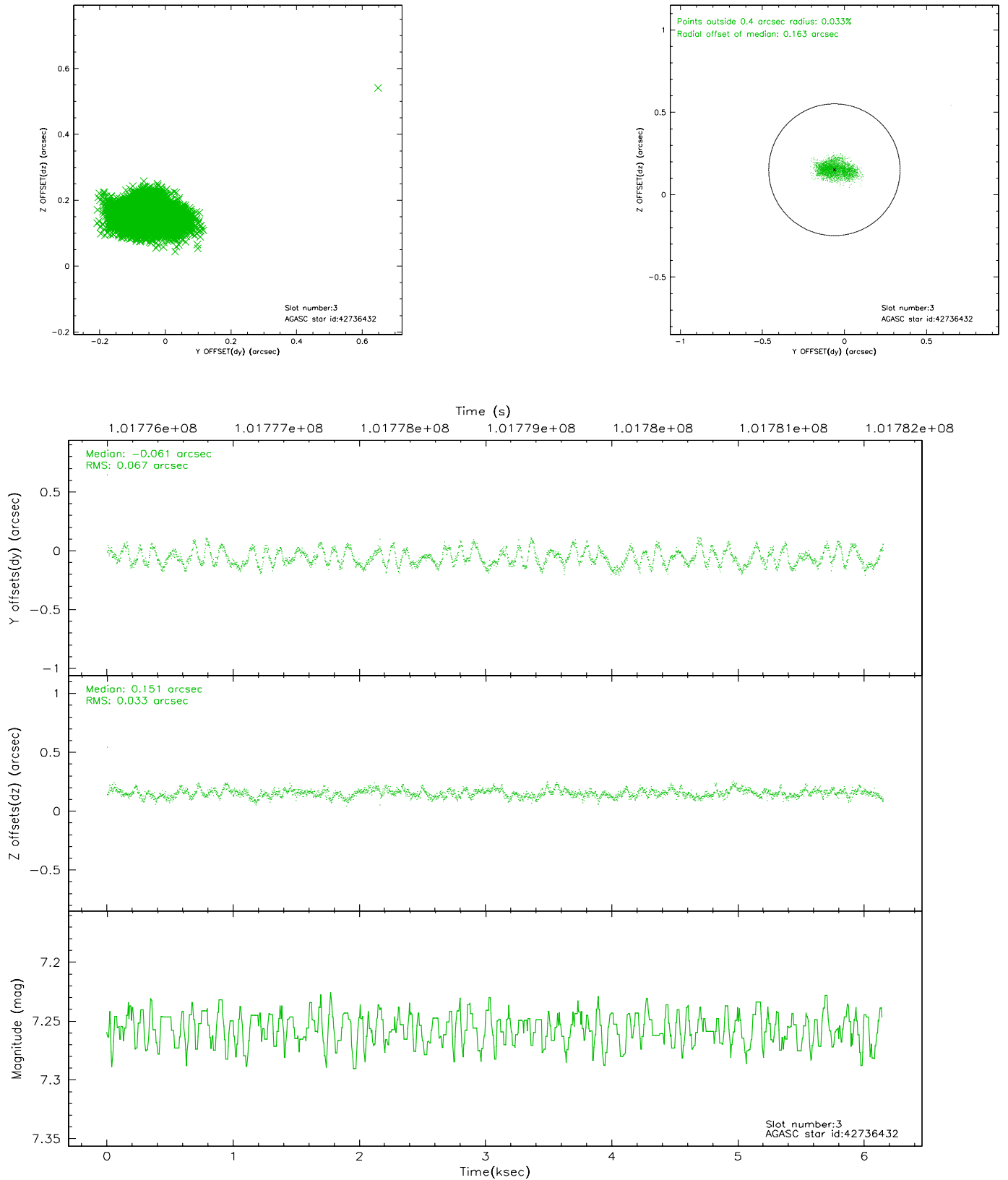
### Slot Statistics

slot	status	id	mag	n_pts	med_dy	med_dz	dr1	dr2	ra	dec	mean_y	mean_z
0	FID	ACIS-S-2	7.11	1499	-0.004	0.033	0.007	0.013	0.000000	0.000000	-755.80	-1727.63
1	FID	ACIS-S-4	7.20	1500	-0.083	-0.007	0.005	0.010	0.000000	0.000000	2156.94	179.85
2	FID	ACIS-S-5	7.23	1500	0.055	-0.017	0.007	0.011	0.000000	0.000000	-1807.37	174.56
3	GUIDE	42736432	7.26	3000	-0.061	0.151	0.078	0.123	221.856795	2.035715	1918.06	-1580.84
4	GUIDE	42732896	7.78	3000	-0.008	-0.156	0.066	0.101	220.804479	1.824716	1421.99	2248.00
5	GUIDE	42737888	8.09	3000	-0.158	-0.057	0.042	0.068	221.189651	2.024618	2043.82	817.08
6	GUIDE	42739912	9.06	3000	-0.017	0.198	0.074	0.121	221.944411	1.831113	1162.31	-1844.41
7	GUIDE	42739904	9.42	2998	0.243	-0.136	0.093	0.152	221.063801	1.147543	-1074.60	1485.34

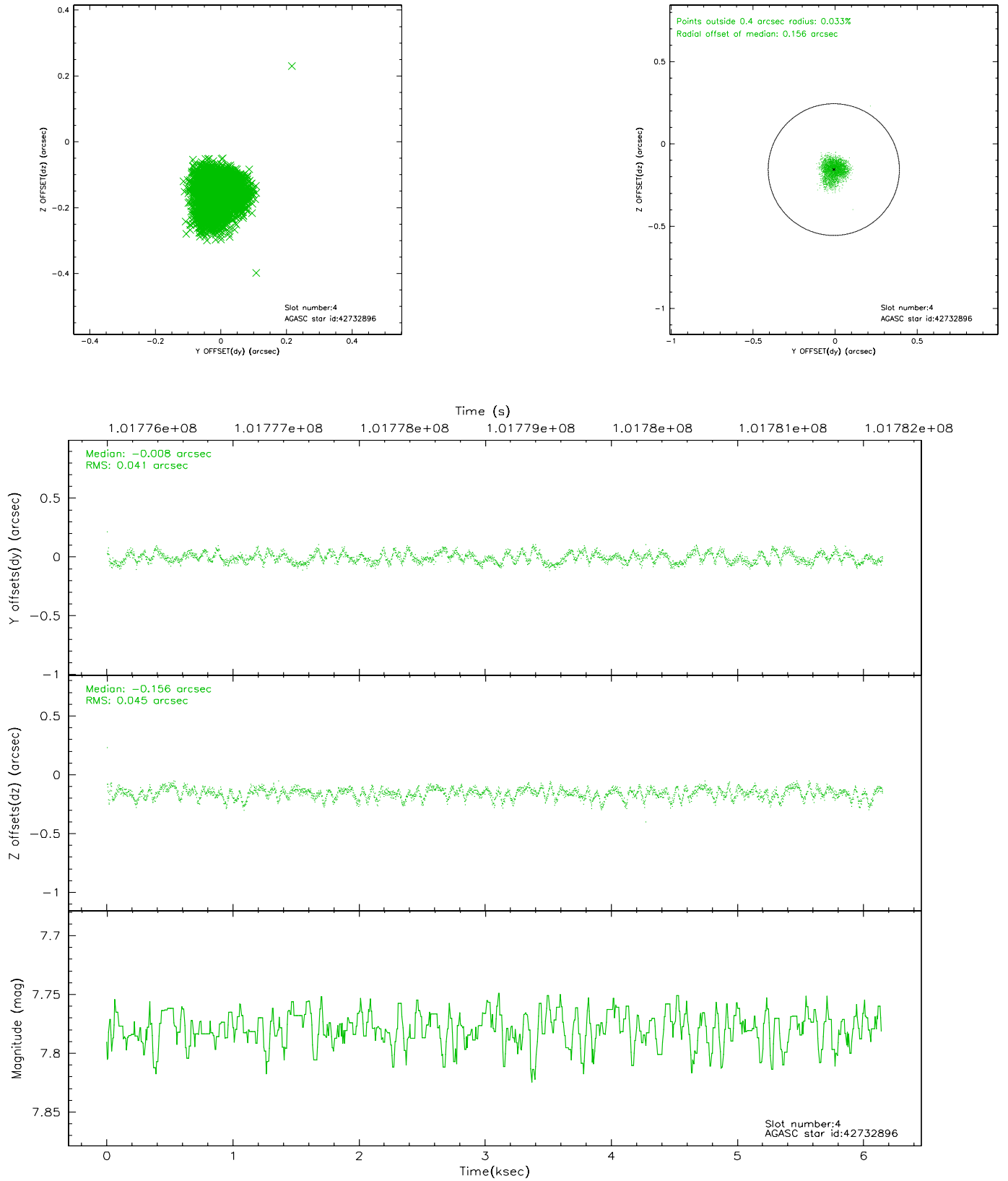


## 2.4 Star Slots

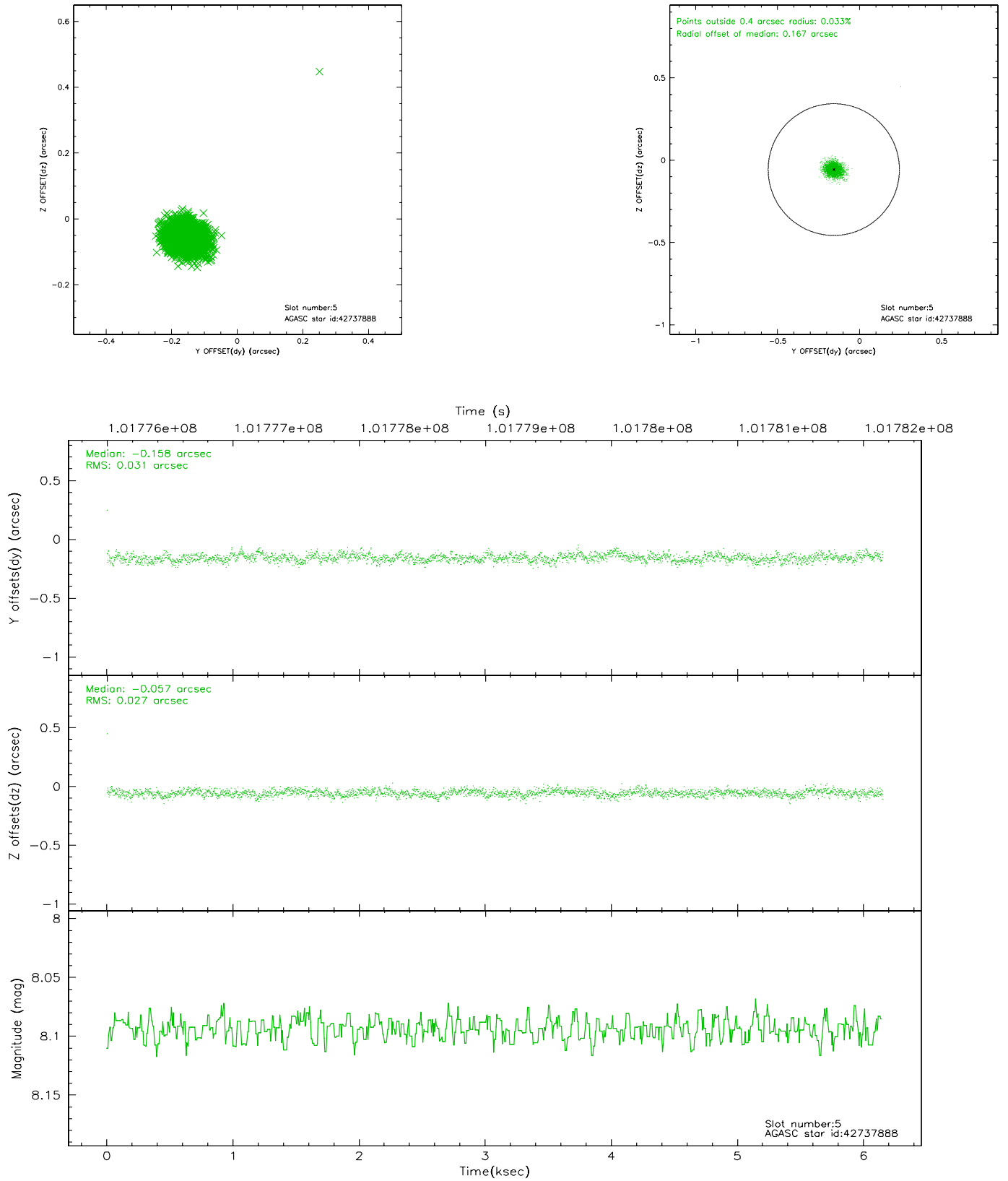
### 2.4.1 Slot 3



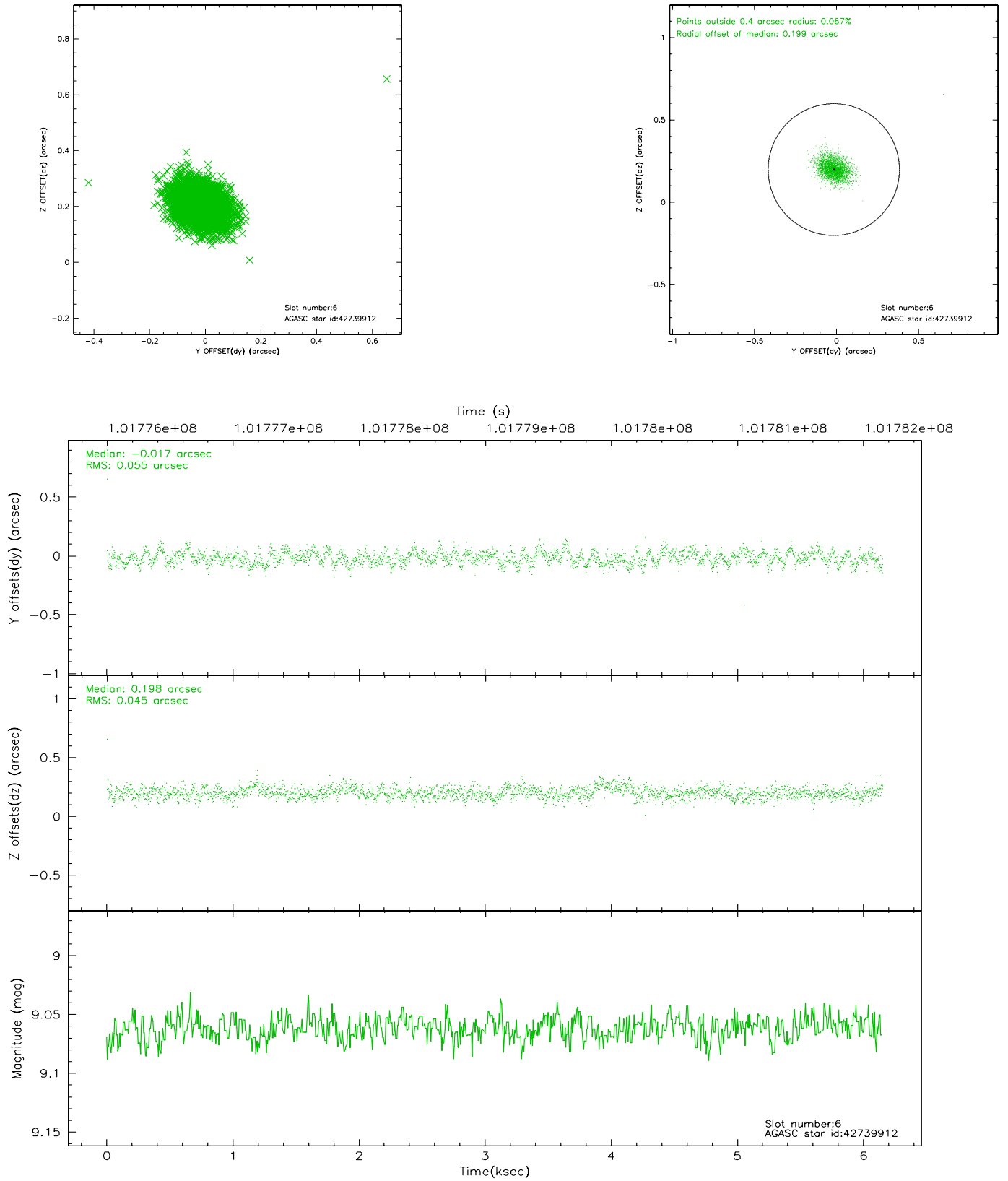
## 2.4.2 Slot 4



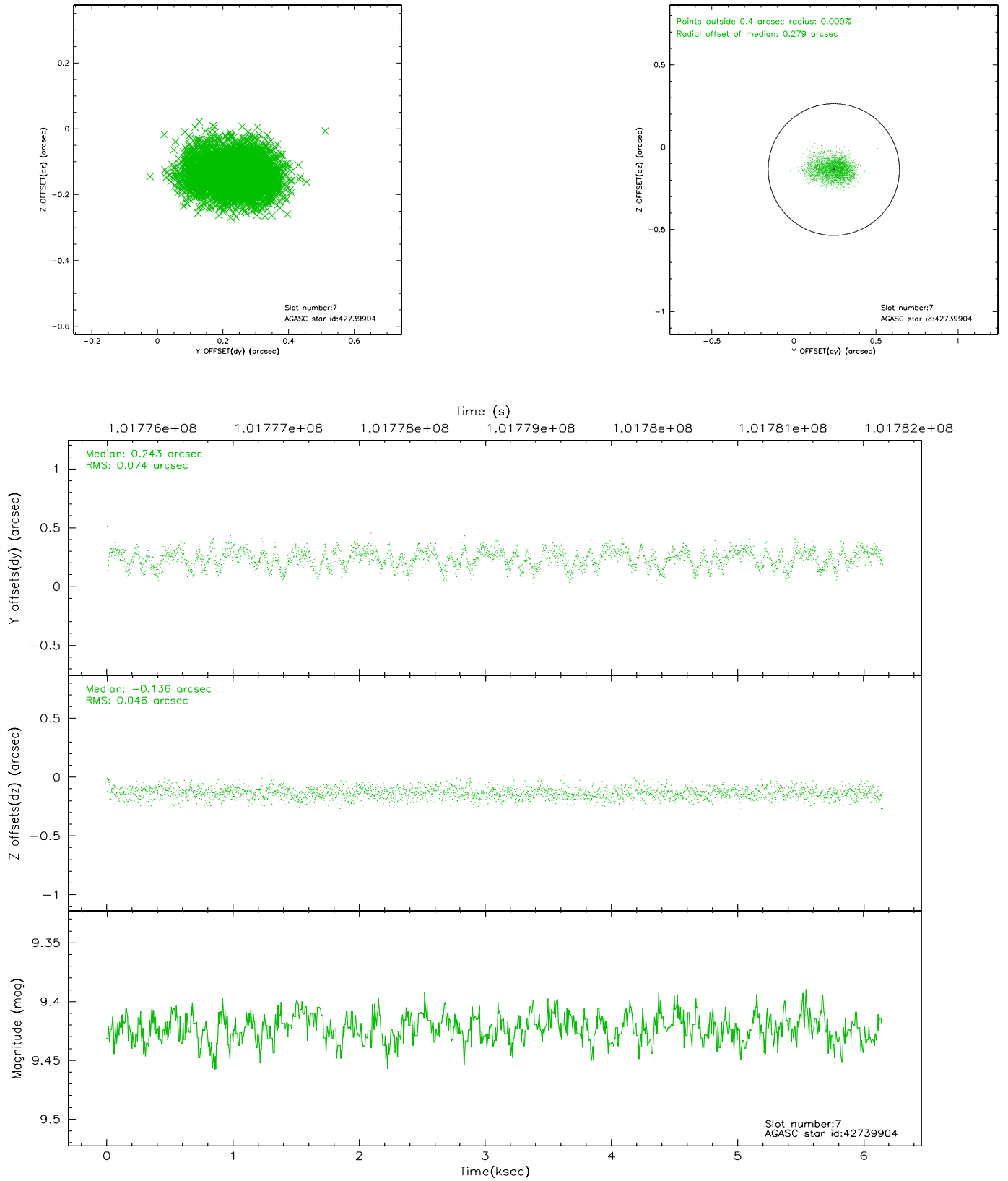
### 2.4.3 Slot 5



## 2.4.4 Slot 6

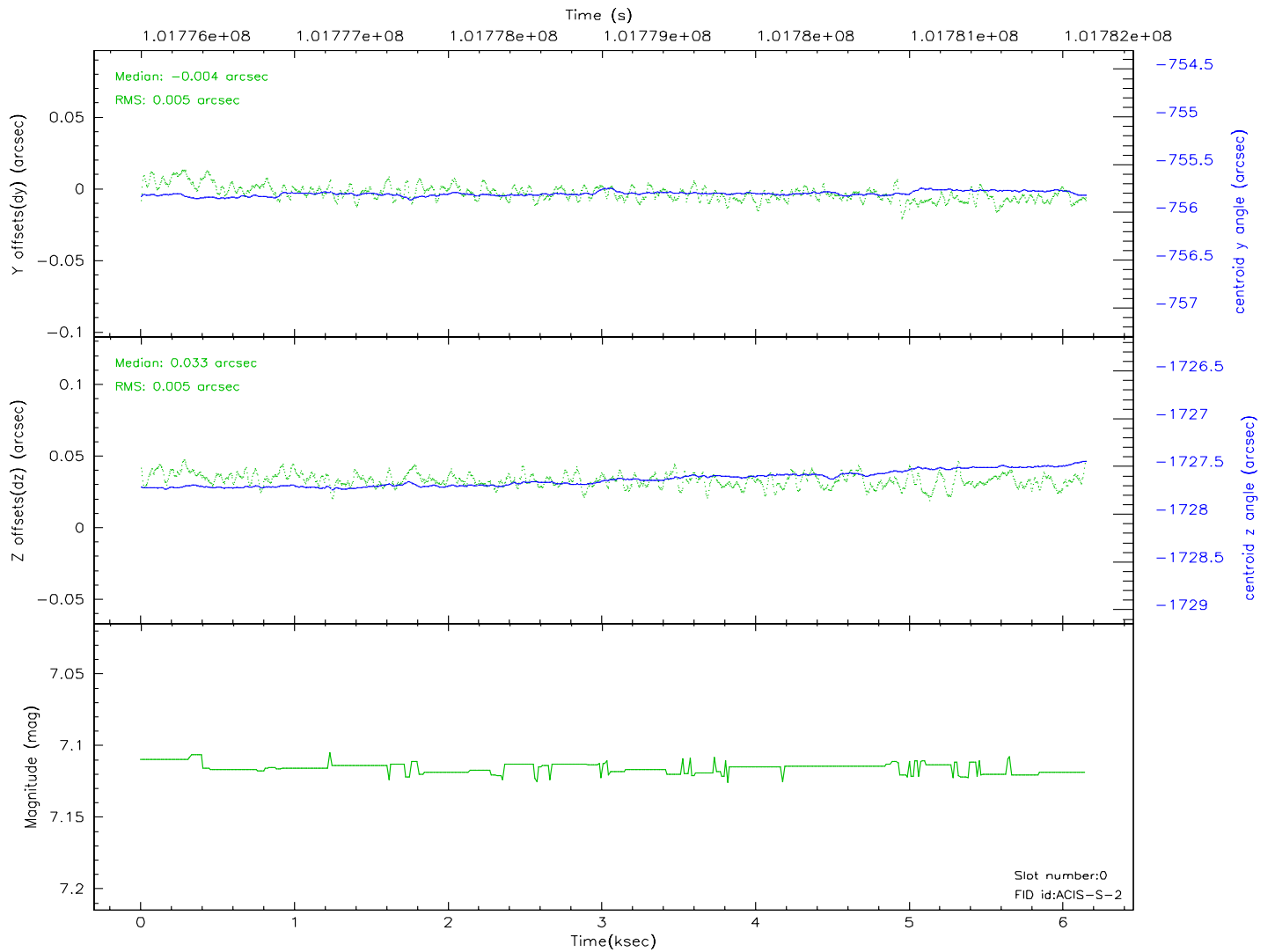
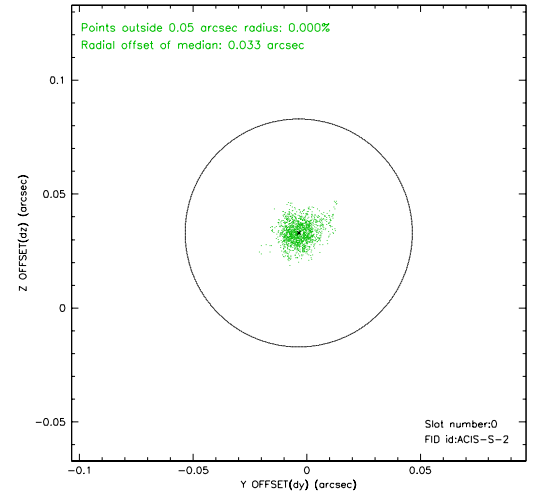
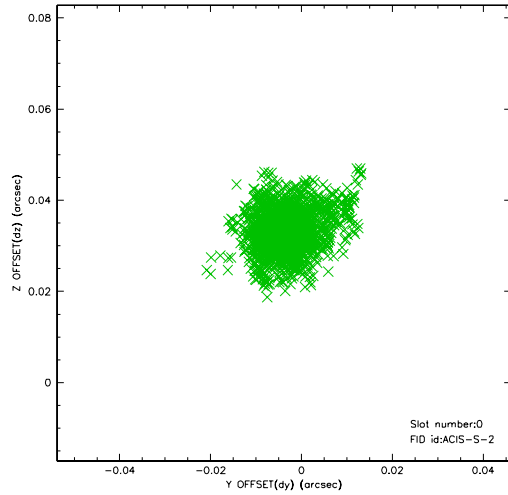


## 2.4.5 Slot 7

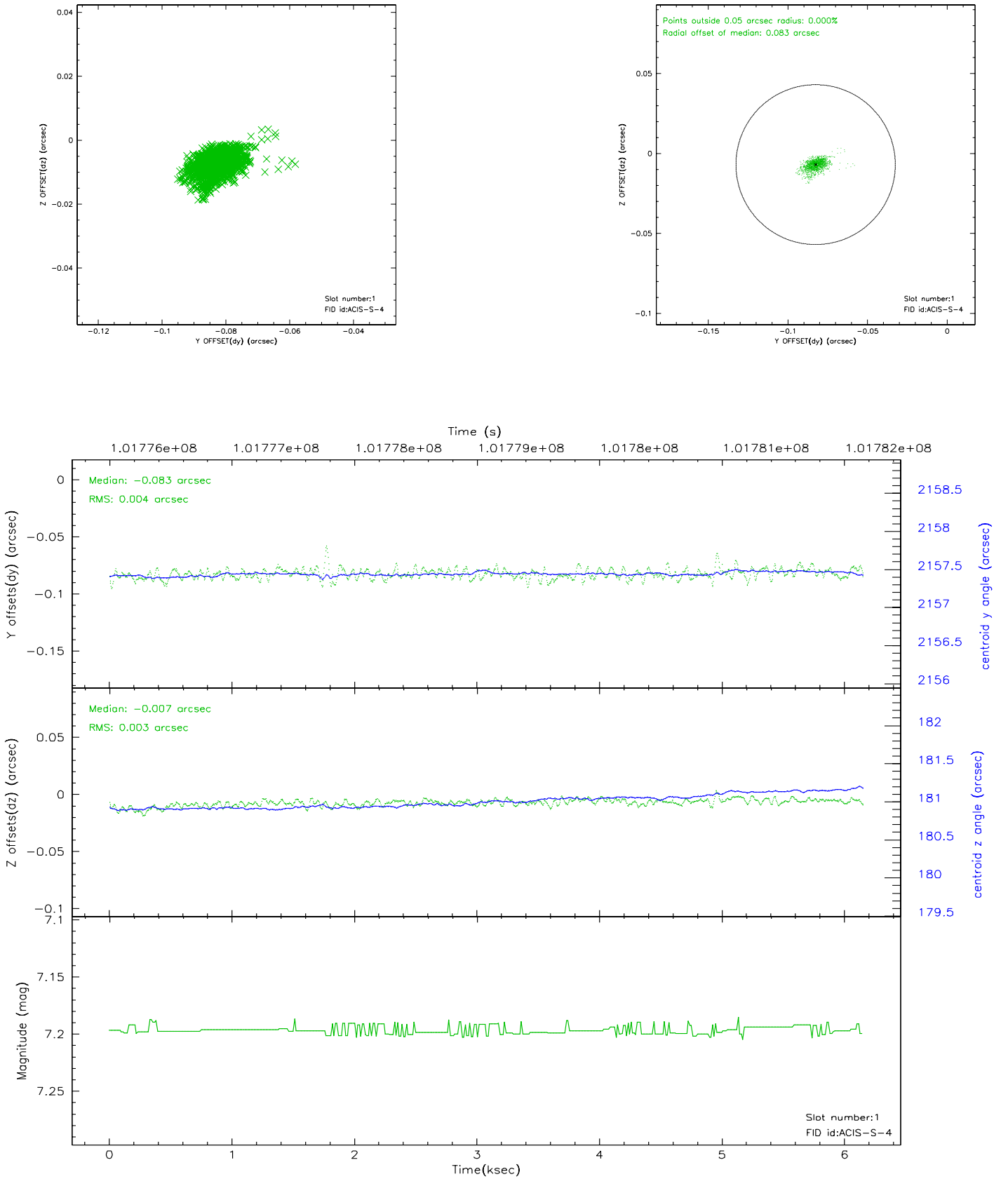


## 2.5 FID Slots

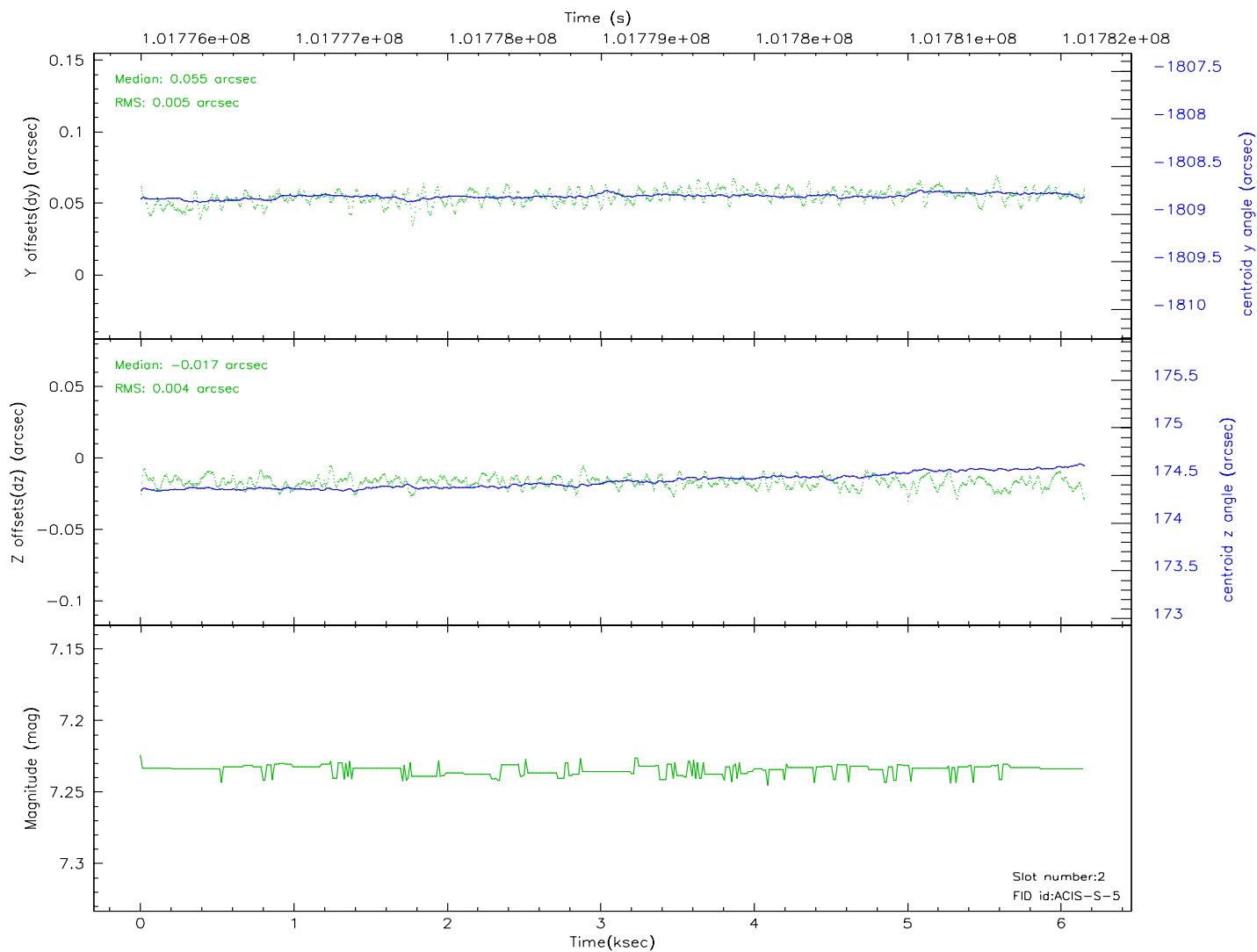
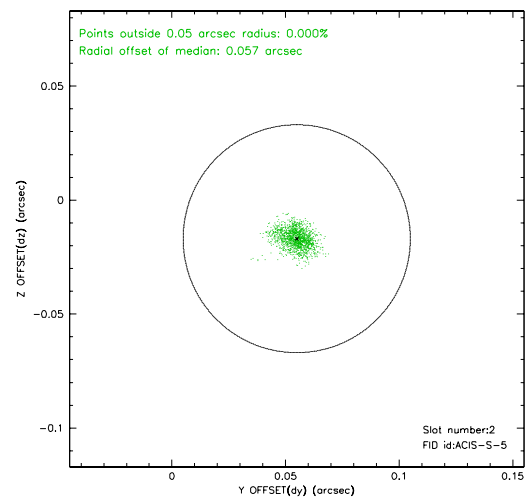
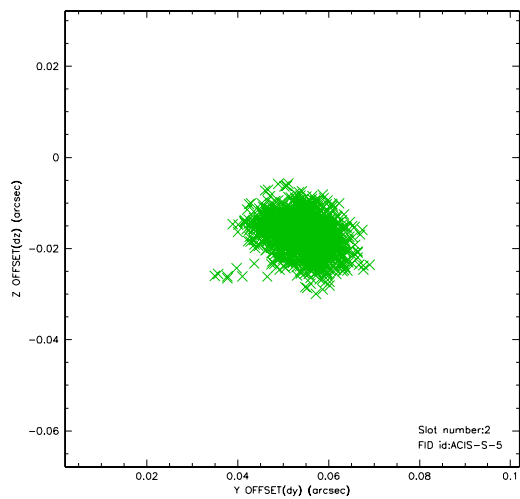
### 2.5.1 Slot 0



## 2.5.2 Slot 1

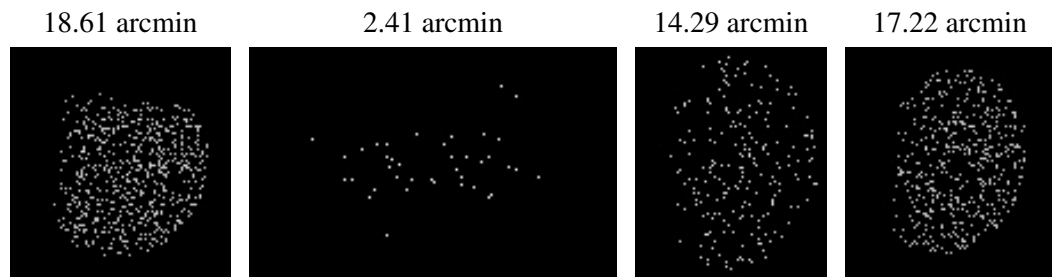


## 2.5.3 Slot 2





### 3 Point Sources



## A Summary

### A.1 Status

V&V Scientist	Jen Lauer
V&V Date (YYYY-MM-DD)	2006.11.16
V&V Edition	1
V&V Disposition and Status	OK
V&V Charge Time	6

### A.2 Comments