

V&V Reference Report

L2 ASCDS Version : 10.4

Observation 17192 - L2 Version 1
Chandra X-Ray Center

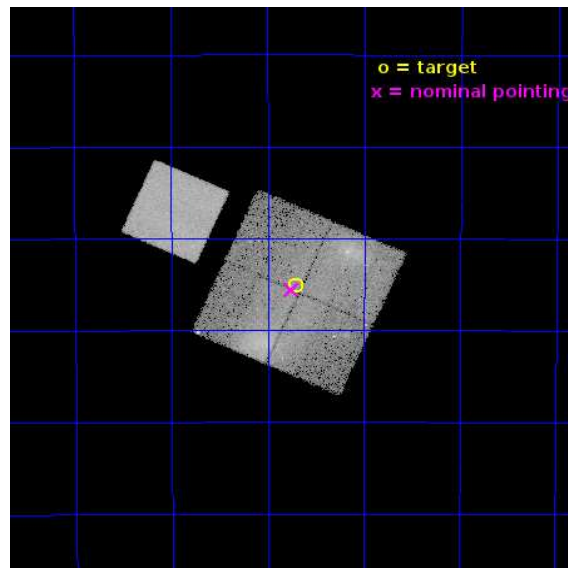
L2 Processing Date : Jun 5 2015

Contents

1	Front	2
2	OBI	3
2.1	OBI	3
2.1.1	Images	3
2.1.2	Bias	3
2.1.3	Parameters	4
2.1.4	Events	4
2.2	Compared Parameters	5
2.3	Aspect	6
2.4	Star Slots	9
2.4.1	Slot 3	9
2.4.2	Slot 4	10
2.4.3	Slot 5	11
2.4.4	Slot 6	12
2.4.5	Slot 7	13
2.5	FID Slots	14
2.5.1	Slot 0	14
2.5.2	Slot 1	15
2.5.3	Slot 2	16
A	Summary	17
A.1	Status	17
A.2	Comments	17

1 Front

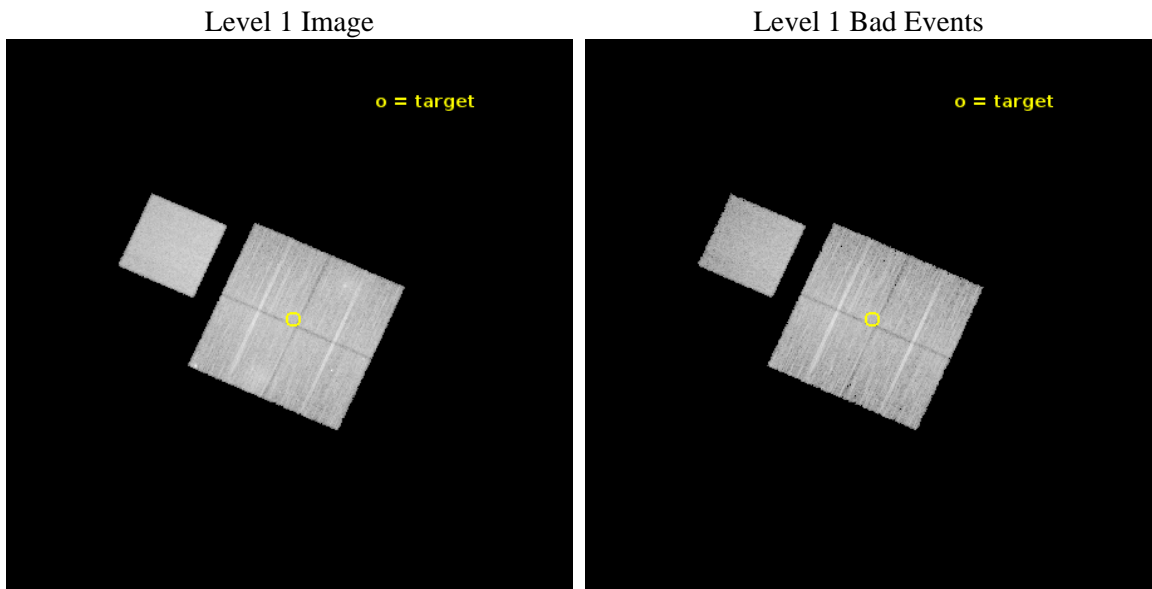
seq_num	801475	Sequence number
obs_id	17192	Observation id
title	High-Resolution Imaging of Newborn Shock Fronts in Nearby Early-Phase Merging Cluster CIZA J1358.9-4750	Proposal title
observer	Yuichi Kato	Principal investigator
object	CIZA J1358.9-4750	Source name
dtcycle	0	
cycle	P	events from which exps? Prim/Second/Both
ra_targ	209.678333	Observer's specified target RA [deg]
dec_targ	-47.752611	Observer's specified target Dec [deg]
ra_nom	209.68861388081	Nominal RA [deg]
dec_nom	-47.759914740589	Nominal Dec [deg]
roll_nom	294.21628243713	Nominal Roll [deg]
revision	1	Processing version of data
ontime	20022.900154114	Sum of GTIs [s]
livetime	19761.286222956	Livetime [s]
ontime0	20022.900154114	Sum of GTIs [s]
ontime1	20022.900154114	Sum of GTIs [s]
ontime2	20022.900154114	Sum of GTIs [s]
ontime3	20022.900154114	Sum of GTIs [s]
ontime7	20022.900154114	Sum of GTIs [s]
l2events	146284	Number of level 2 events



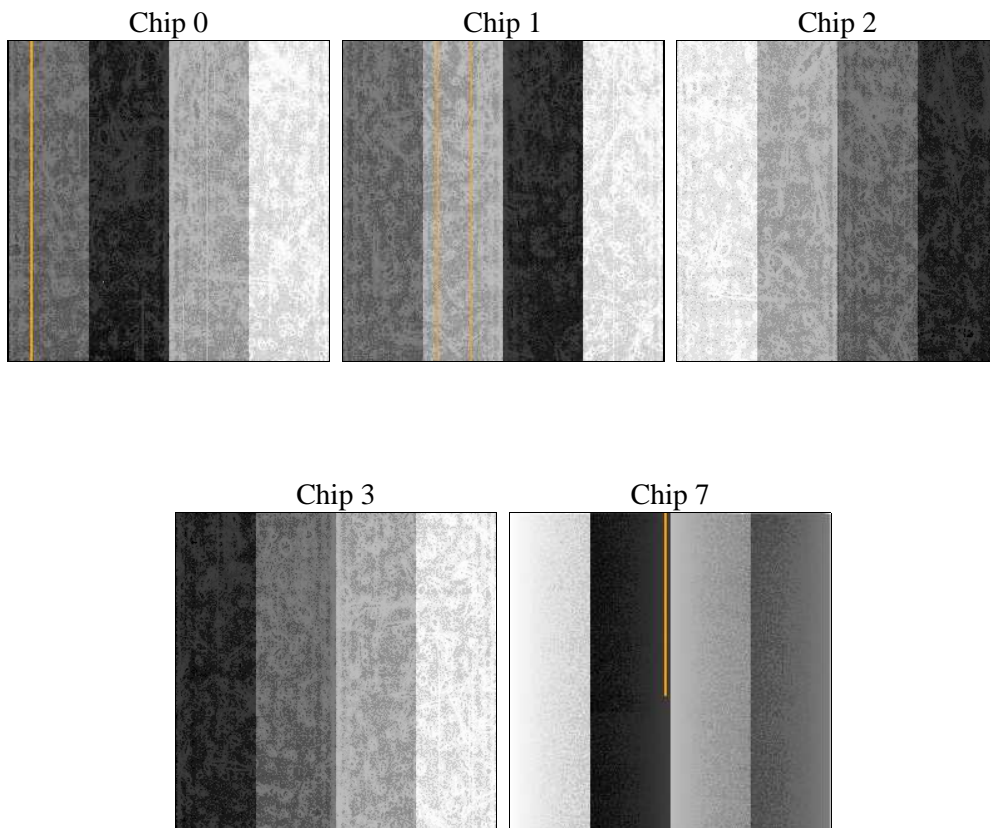
2 OBI

2.1 OBI

2.1.1 Images



2.1.2 Bias



2.1.3 Parameters

obi_num	0	Obi number	sched_exp_time	19955.175000	[s] Scheduled observation exposure time
ascdsver	10.4	Processing system revision	ontime	20022.900154114	Sum of GTIs [s]
caldbver	4.6.7	 	ontime0	20022.900154114	Sum of GTIs [s]
date	2015-06-05T18:15:09	Date and time of file creation	ontime1	20022.900154114	Sum of GTIs [s]
revision	1	Processing version of data	ontime2	20022.900154114	Sum of GTIs [s]
			ontime3	20022.900154114	Sum of GTIs [s]
			ontime7	20022.900154114	Sum of GTIs [s]
			l1events	576644	Number of level 1 events

2.1.4 Events

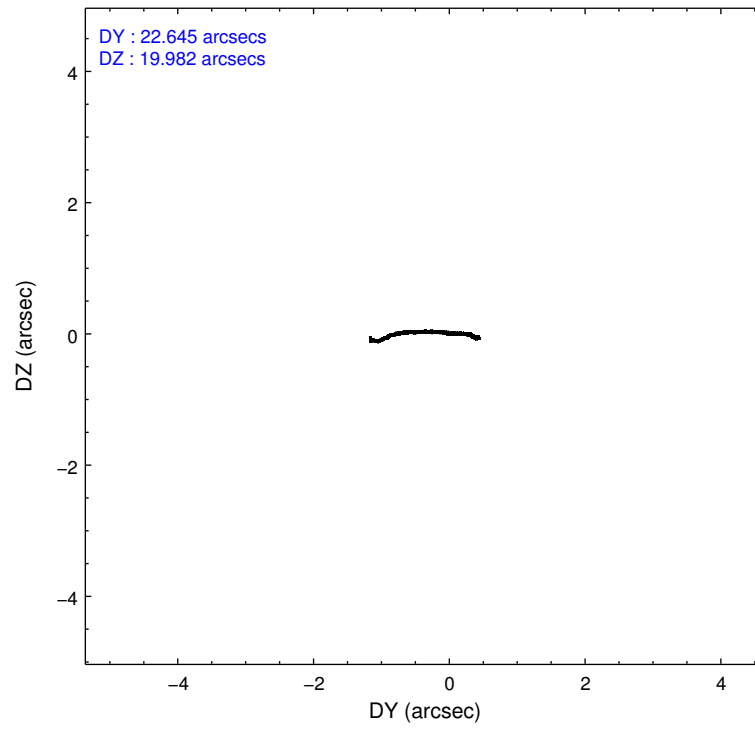
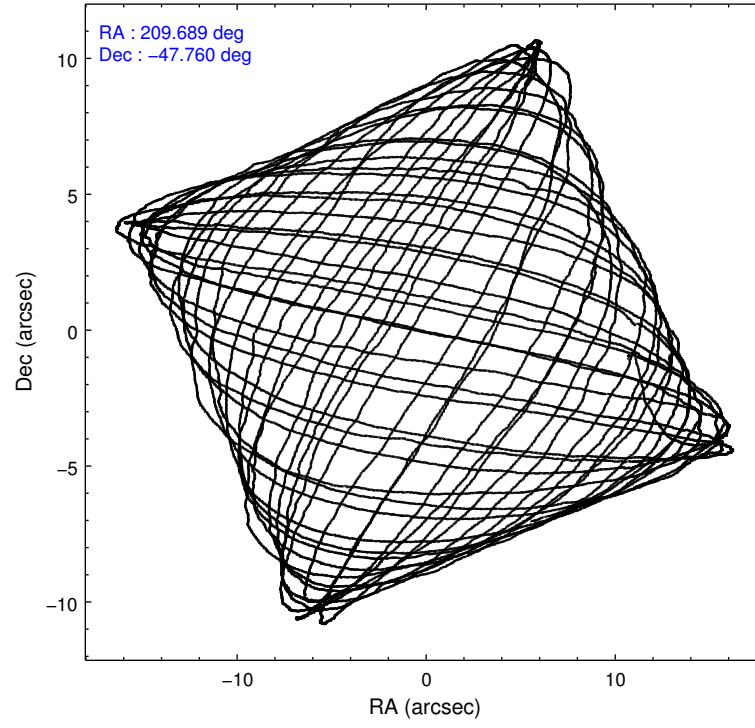
	ccd 0	ccd 1	ccd 2	ccd 3	ccd 7
level 1 events	102256	110582	120069	103978	139759
rejected events	79995	80754	90435	86708	79491
rejected %	78%	73%	75%	83%	56%

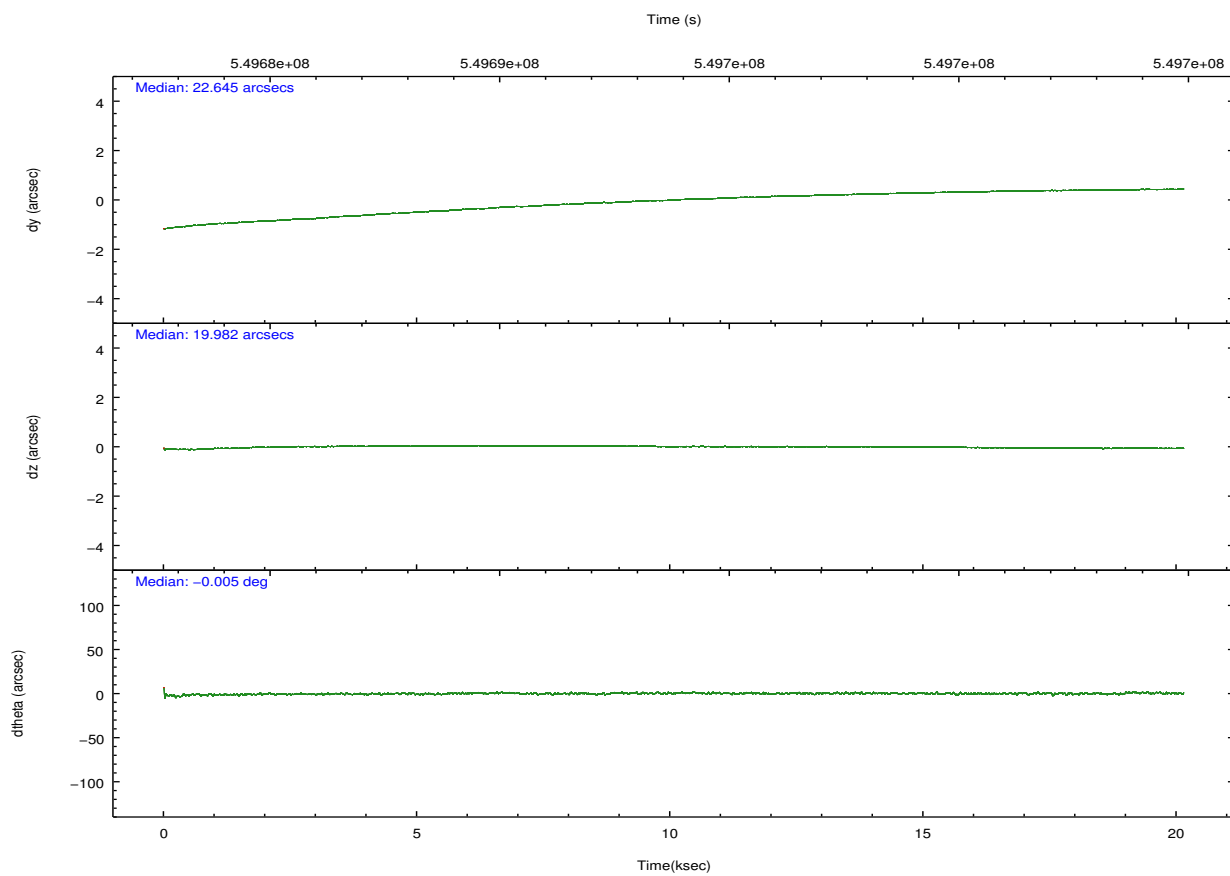
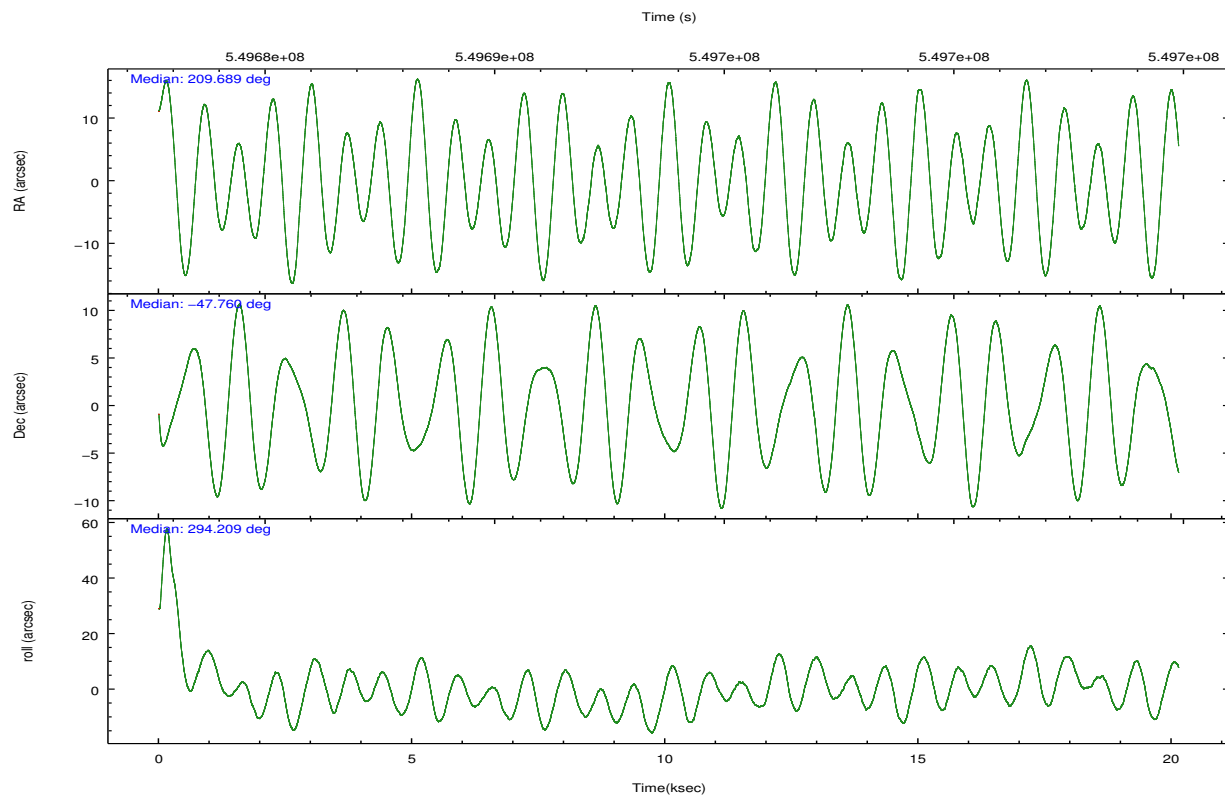
	ccd 0	ccd 1	ccd 2	ccd 3	ccd 7
grade 0 events	12383	17696	18463	8729	5283
	12%	16%	15%	8%	3%
grade 1 events	70	82	97	71	174
	0%	0%	0%	0%	0%
grade 2 events	4170	5100	4861	3100	12563
	4%	4%	4%	2%	8%
grade 3 events	1553	1803	1761	1421	5139
	1%	1%	1%	1%	3%
grade 4 events	1493	1845	1837	1427	5045
	1%	1%	1%	1%	3%
grade 5 events	4679	5070	4271	5296	14230
	4%	4%	3%	5%	10%
grade 6 events	2665	3391	2714	2596	32246
	2%	3%	2%	2%	23%
grade 7 events	75243	75595	86065	81338	65079
	73%	68%	71%	78%	46%

2.2 Compared Parameters

Parameter	Planned	Actual	Parameter	Planned	Actual
Instrument	ACIS	ACIS	Obspar format version number	7	7
Detector	ACIS-01237	ACIS-01237	Obspar file type	PREDICTED	ACTUAL
Grating	NONE	NONE	Obspar update status	NONE	UPDATED
Data mode	VFAINT	VFAINT	CCD I0 on	Y	Y
Observation mode	POINTING	POINTING	CCD I1 on	Y	Y
[deg] Pointing RA	209.655176	209.6886138808108	CCD I2 on	Y	Y
[deg] Pointing Dec	-47.743848	-47.75991474058929	CCD I3 on	Y	Y
[deg] Pointing Roll	293.982864	294.2162824371345	CCD S0 on	N	N
[mm] SIM focus pos	-0.782348	-0.7809083437167272	CCD S1 on	N	N
[mm] SIM defocus	0	0.001439871863259334	CCD S2 on	N	N
[mm] SIM translation stage pos	-233.592463	-233.5874344608287	CCD S3 on	O1	Y
[mm] SIM translation stage offset	0	-0.005018542100998502	CCD S4 on	N	N
[s] Observation start time (MET)	549683907.184000	549682929.04205	CCD S5 on	N	N
Observation start date	2015-06-03T01:57:20	2015-06-03T01:42:09	Number of optional ACIS chips dropped	0	0
[s] Observation end time (MET)	549703863.184000	549704099.90574	On-chip summing requested	N	N
Observation end date	2015-06-03T07:29:56	2015-06-03T07:34:59	Subarray requested	NONE	NONE
Read mode	TIMED	TIMED	Alternating exposures requested	N	N
			[s] Primary exposure time	0.000000	3.1

2.3 Aspect



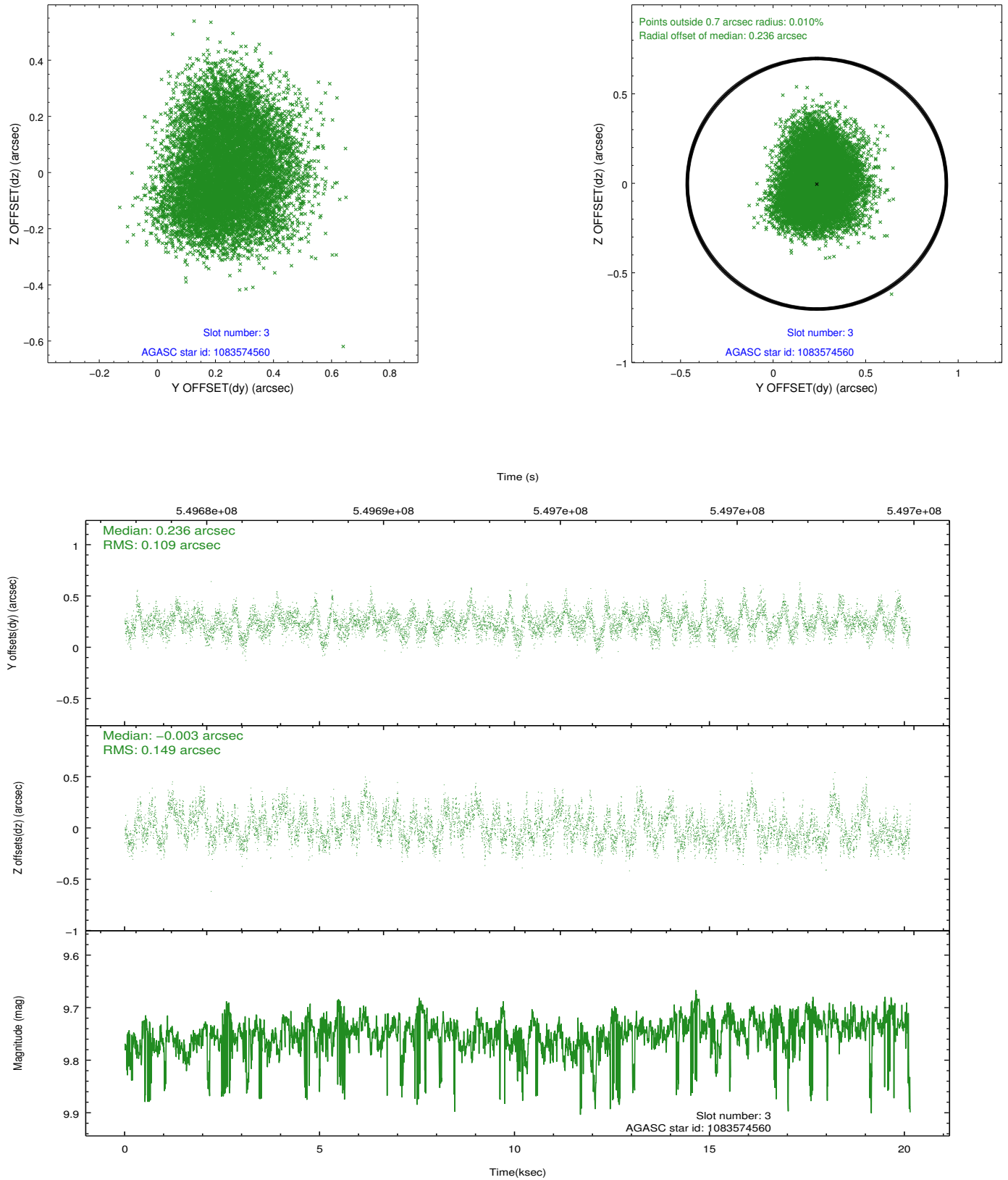


Slot Statistics

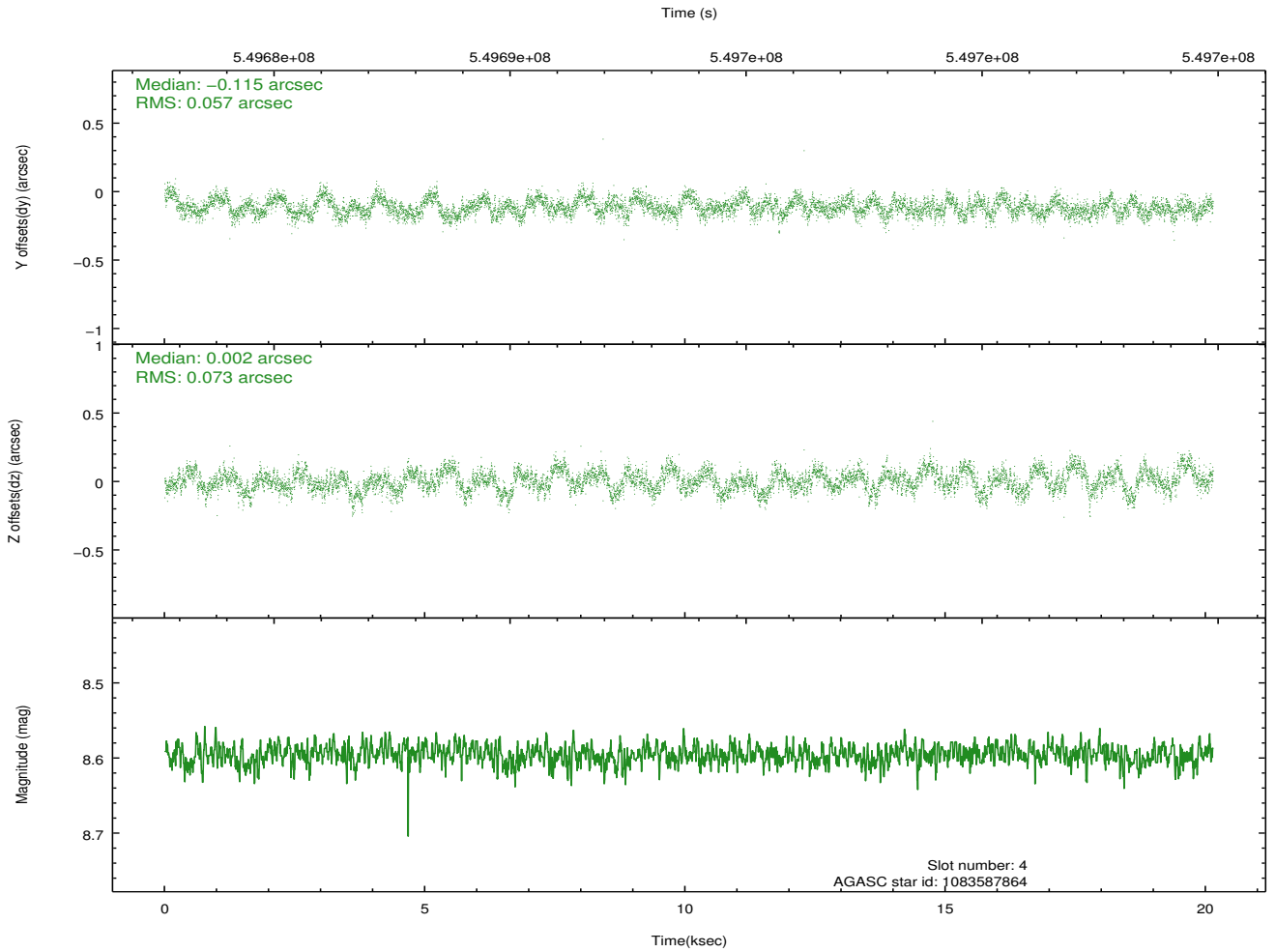
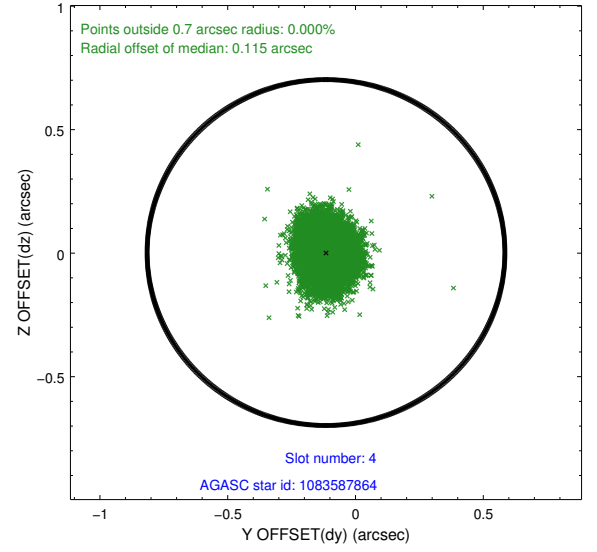
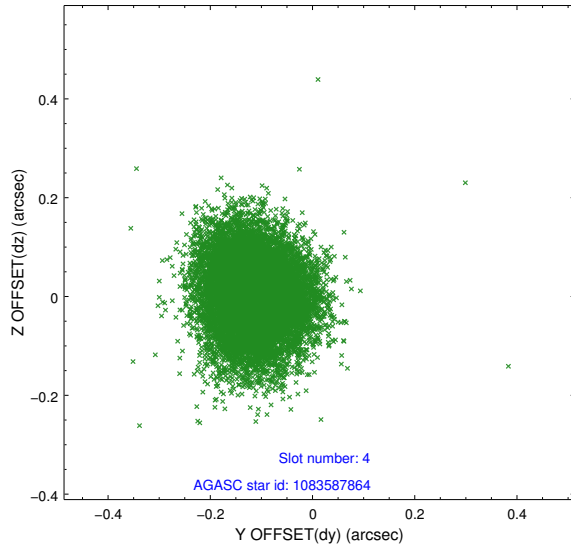
slot	status	used	id	mag	n_pts	med_dy	med_dz	dr1	dr2	ra	dec	mean_y	mean_z
0	FID		ACIS-I-2	7.00	4913	-0.170	-0.088	0.021	0.040	0.000000	0.000000	-777.57	-850.19
1	FID		ACIS-I-4	7.04	4913	0.426	0.116	0.022	0.056	0.000000	0.000000	2136.90	1056.23
2	FID		ACIS-I-5	7.08	4913	-0.355	0.042	0.012	0.020	0.000000	0.000000	-1831.44	1054.03
3	GUIDE	used	1083574560	9.75	9809	0.236	-0.003	0.199	0.308	209.731135	-47.546405	-573.80	457.37
4	GUIDE	used	1083587864	8.60	9821	-0.115	0.002	0.099	0.156	209.240512	-47.422825	-1463.74	-454.39
5	GUIDE	used	1083595344	8.15	9824	-0.018	0.349	0.108	0.166	209.371306	-47.904458	251.32	-861.54
6	GUIDE	used	1083595832	9.46	9814	-0.224	-0.347	0.150	0.233	210.080180	-47.829377	701.45	811.76
7	GUIDE	used	1083596136	9.48	9817	0.121	-0.013	0.184	0.281	209.352399	-48.392010	1839.82	-1610.15

2.4 Star Slots

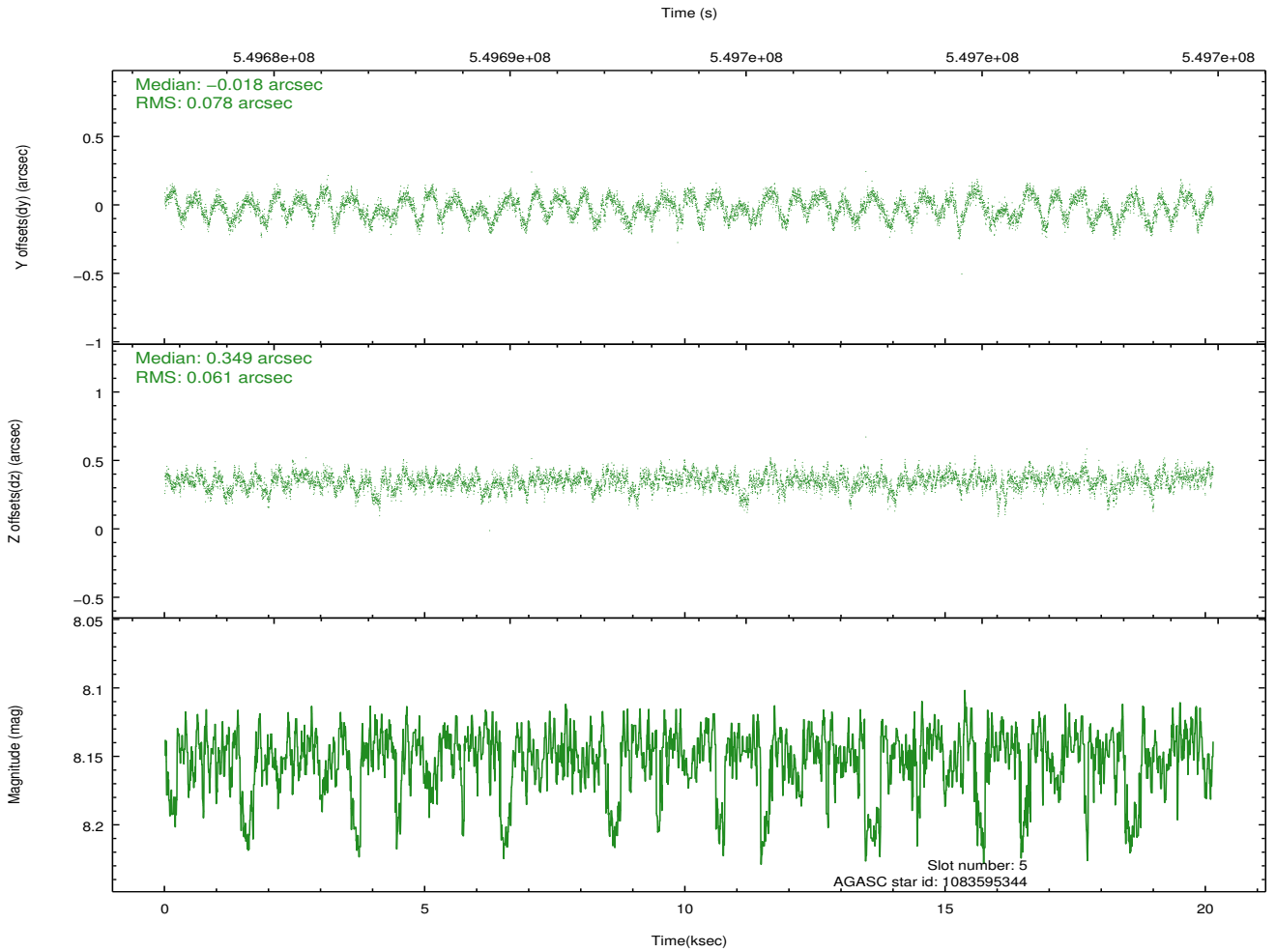
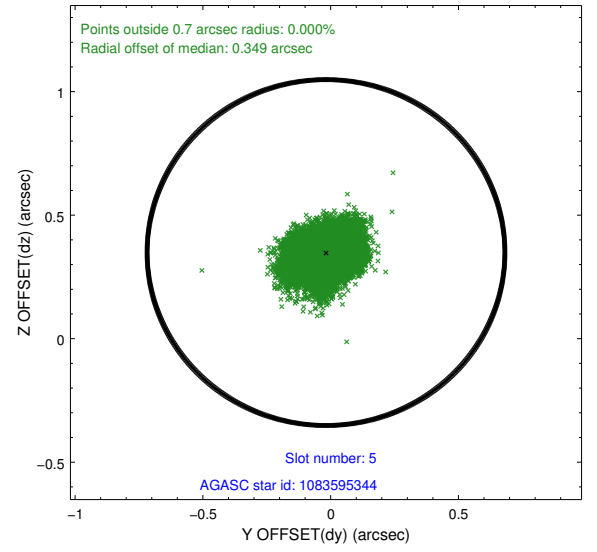
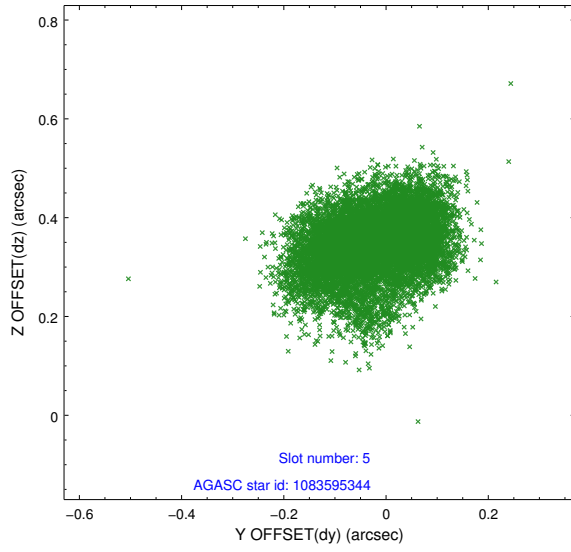
2.4.1 Slot 3



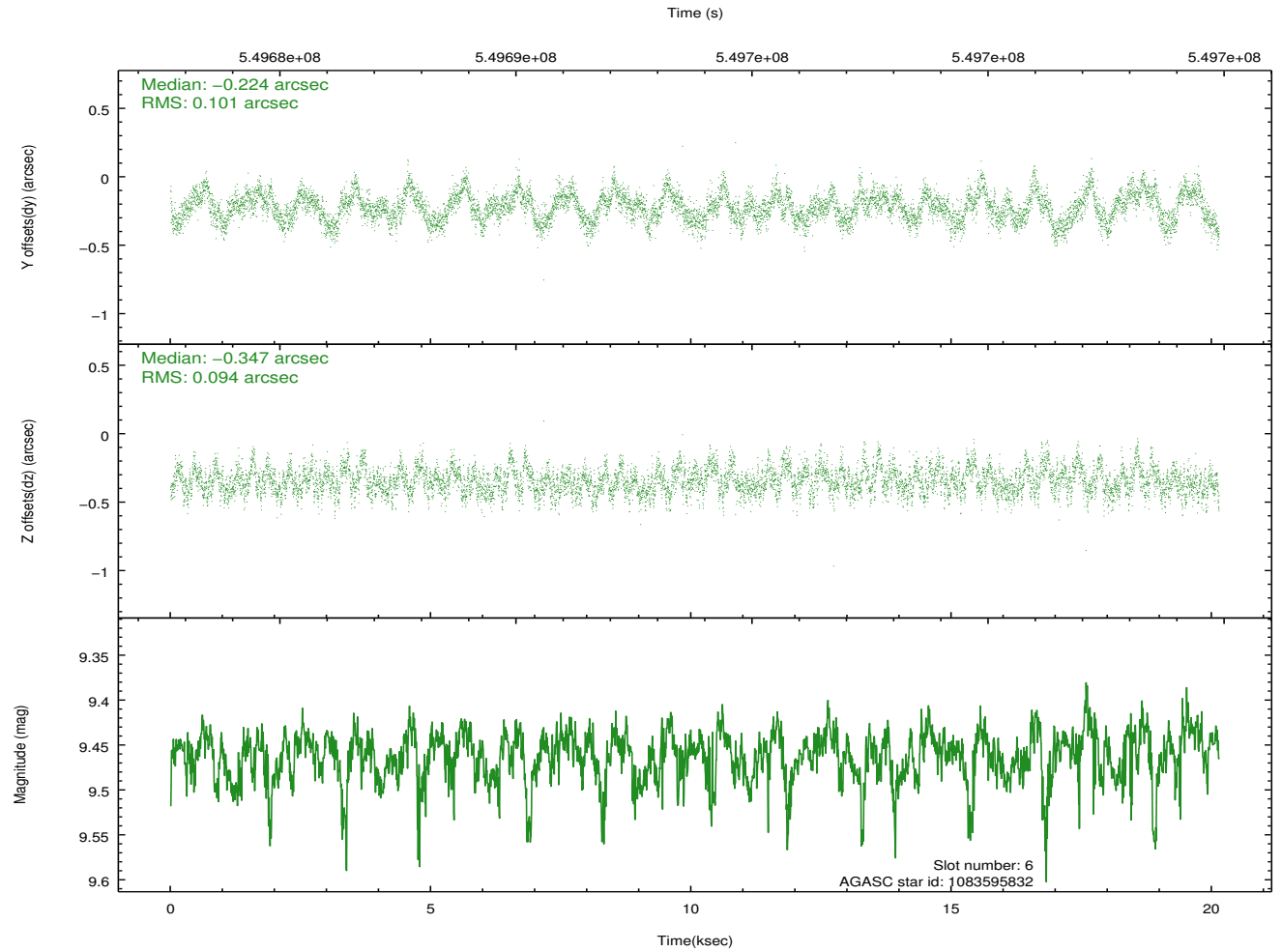
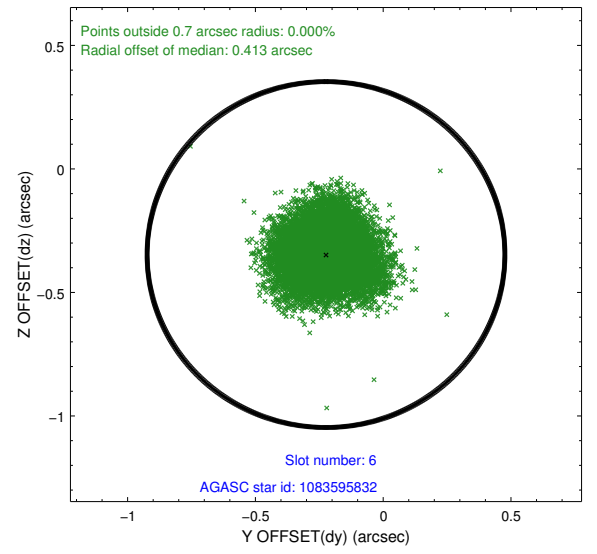
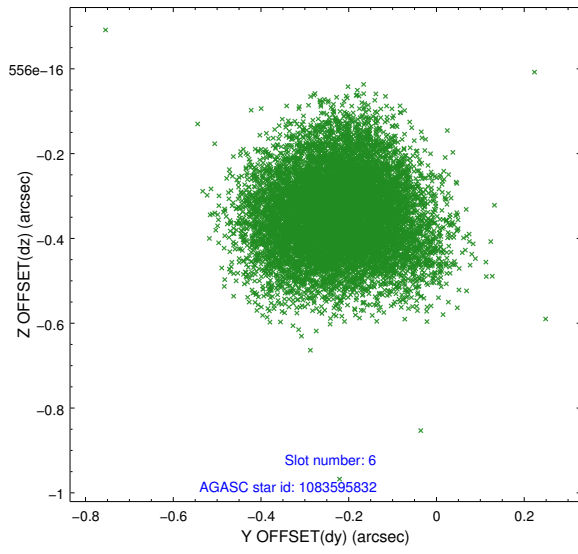
2.4.2 Slot 4



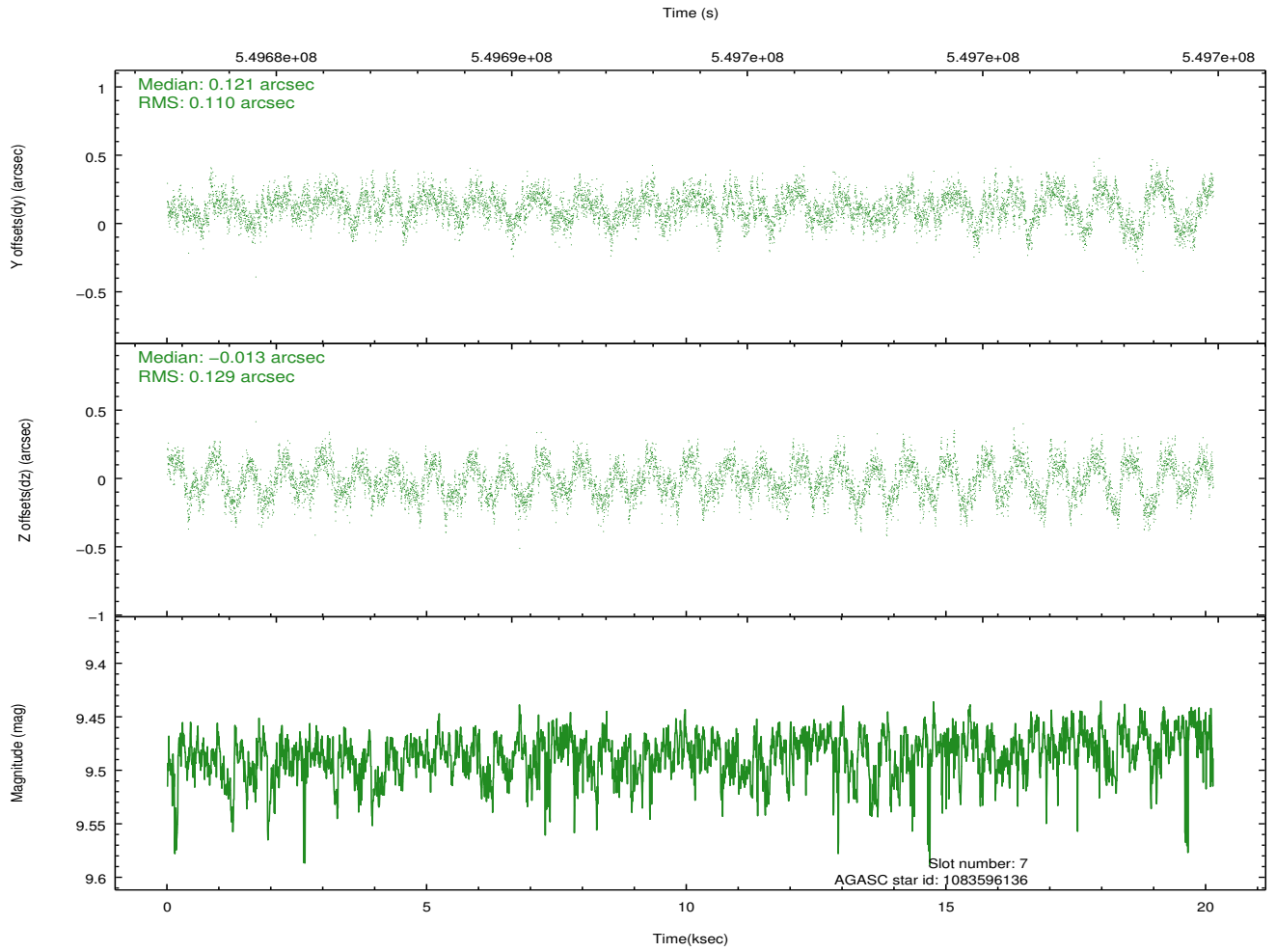
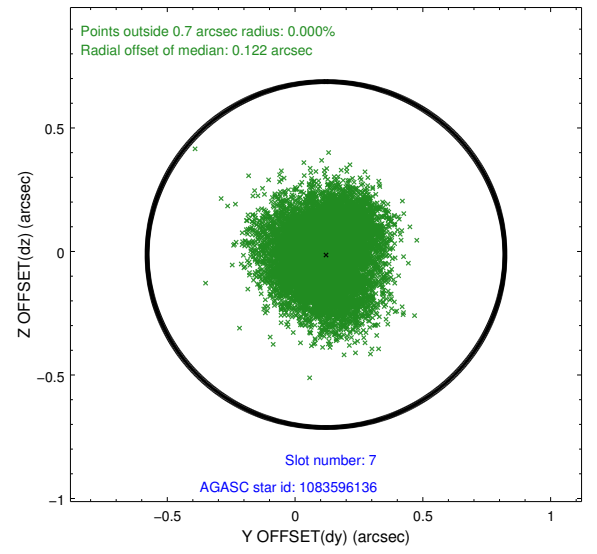
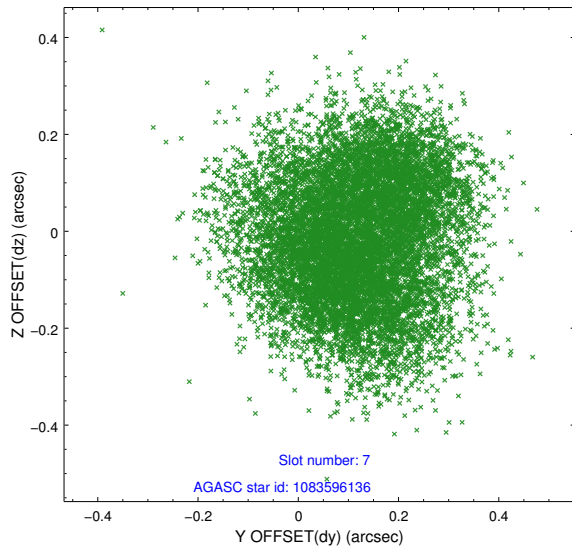
2.4.3 Slot 5



2.4.4 Slot 6

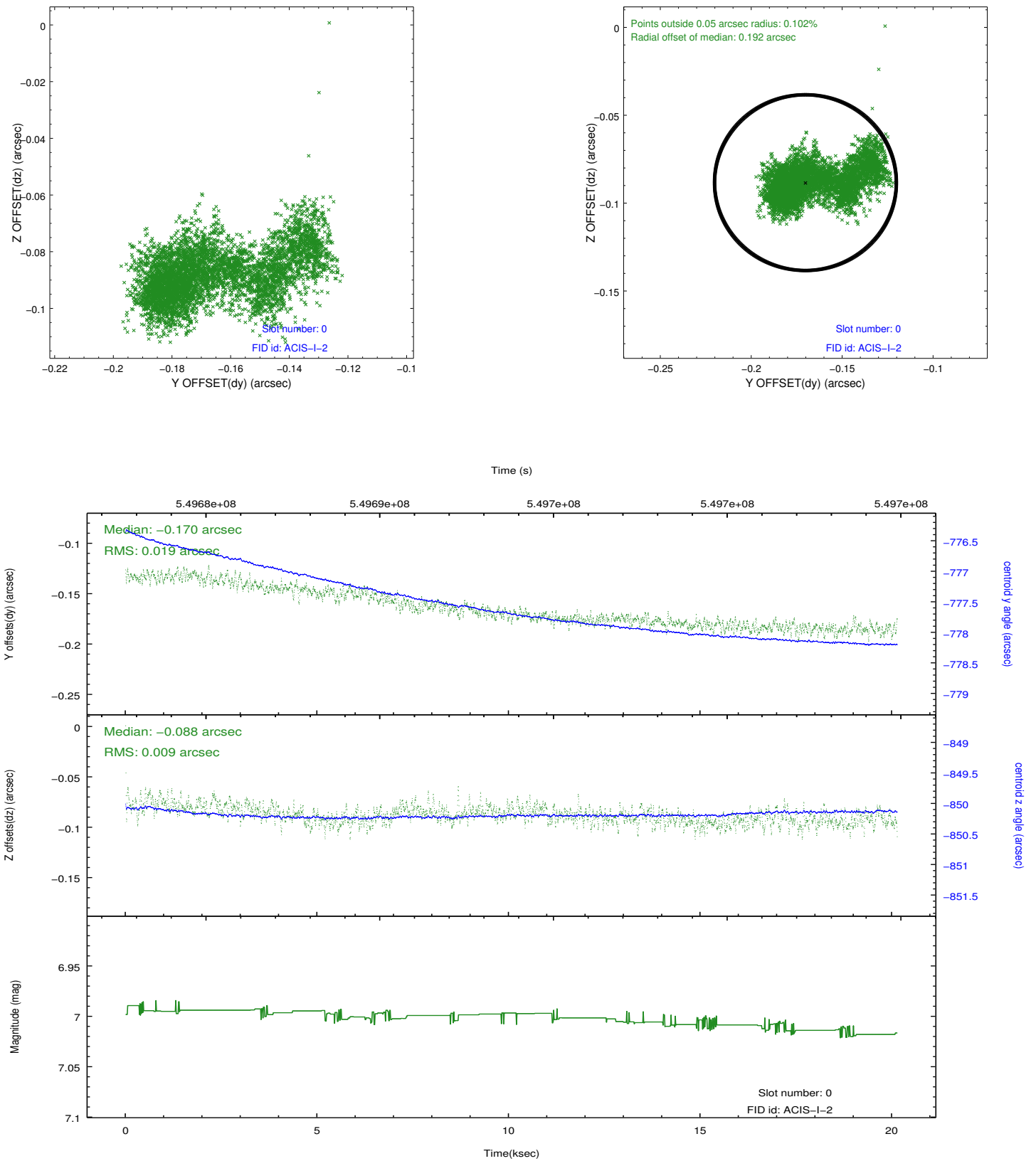


2.4.5 Slot 7

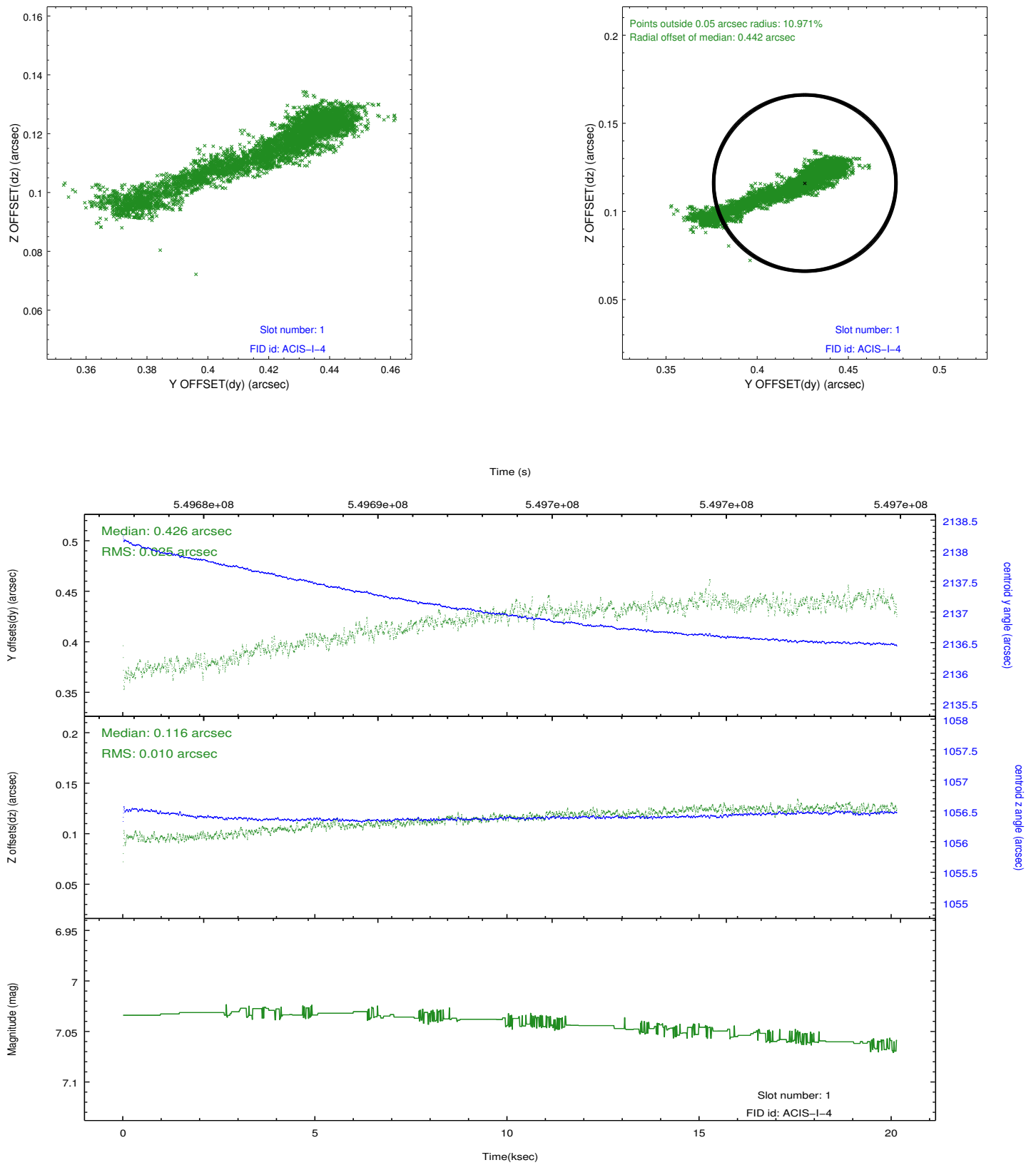


2.5 FID Slots

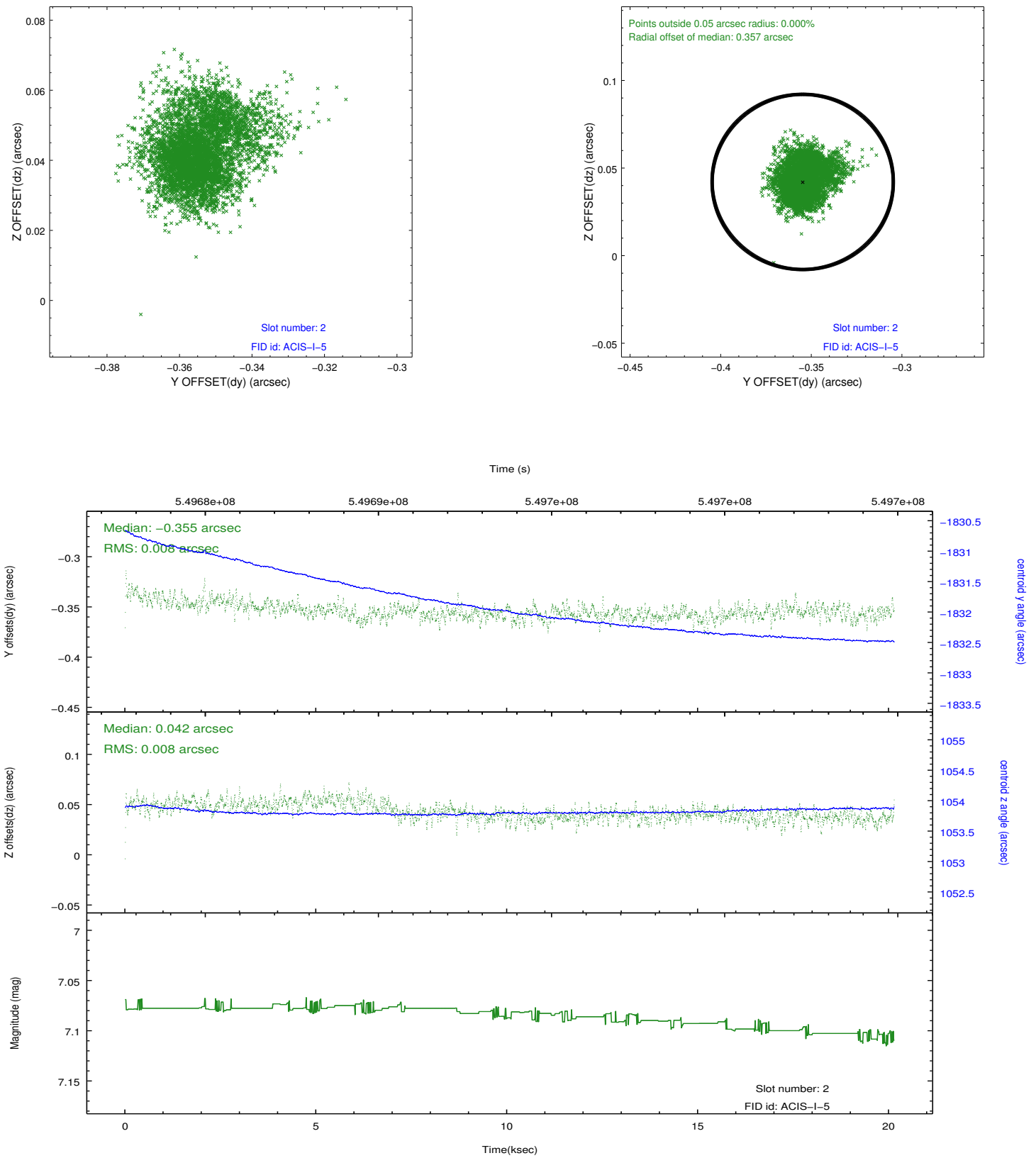
2.5.1 Slot 0



2.5.2 Slot 1



2.5.3 Slot 2



A Summary

A.1 Status

V&V Scientist	Beth Sundheim
V&V Date (YYYY-MM-DD)	2015.06.05
V&V Edition	1
V&V Disposition and Status	OK
V&V Charge Time	20.022900154114

A.2 Comments