

# V&V Reference Report

## L2 ASCDS Version : 10.3

Observation 16972 - L2 Version 1  
Chandra X-Ray Center

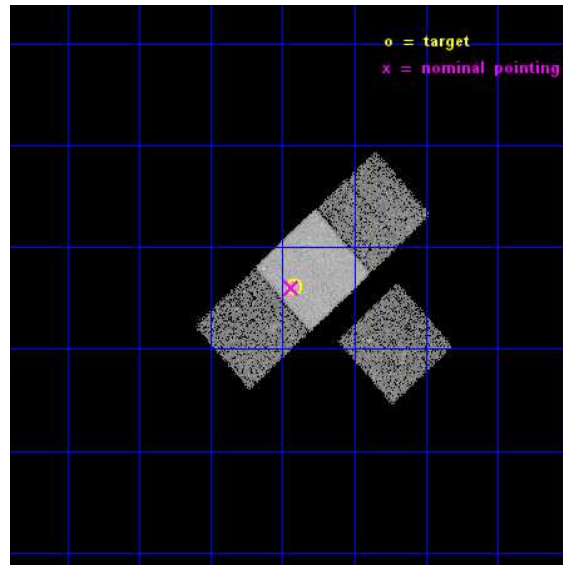
L2 Processing Date : Nov 29 2014

## Contents

<b>1</b>	<b>Front</b>	<b>2</b>
<b>2</b>	<b>OBI</b>	<b>3</b>
2.1	OBI . . . . .	3
2.1.1	Images . . . . .	3
2.1.2	Bias . . . . .	3
2.1.3	Parameters . . . . .	4
2.1.4	Events . . . . .	4
2.2	Compared Parameters . . . . .	5
2.3	Aspect . . . . .	6
2.4	Star Slots . . . . .	9
2.4.1	Slot 3 . . . . .	9
2.4.2	Slot 4 . . . . .	10
2.4.3	Slot 5 . . . . .	11
2.4.4	Slot 6 . . . . .	12
2.4.5	Slot 7 . . . . .	13
2.5	FID Slots . . . . .	14
2.5.1	Slot 0 . . . . .	14
2.5.2	Slot 1 . . . . .	15
2.5.3	Slot 2 . . . . .	16
<b>A</b>	<b>Summary</b>	<b>17</b>
A.1	Status . . . . .	17
A.2	Comments . . . . .	17

# 1 Front

seq_num	601165	Sequence number
obs_id	16972	Observation id
title	Searching for Accreting Black Holes in Lyman Continuum Emitters	Pr
observer	Prof. Philip Kaaret	Principal investigator
object	GALEX J025325.8-001357	Source name
dtcycle	0	&#160
cycle	P	events from which exps? Prim/Second/Both
ra_targ	43.354167	Observer's specified target RA [deg]
dec_targ	-0.2325	Observer's specified target Dec [deg]
ra_nom	43.359596703403	Nominal RA [deg]
dec_nom	-0.23277834506781	Nominal Dec [deg]
roll_nom	317.73024578627	Nominal Roll [deg]
revision	1	Processing version of data
ontime	14672.266551912	Sum of GTIs [s]
livetime	14480.562587846	Livetime [s]
ontime3	14672.184471905	Sum of GTIs [s]
ontime6	14672.225511909	Sum of GTIs [s]
ontime7	14672.266551912	Sum of GTIs [s]
ontime8	14672.143431902	Sum of GTIs [s]
l2events	68564	Number of level 2 events

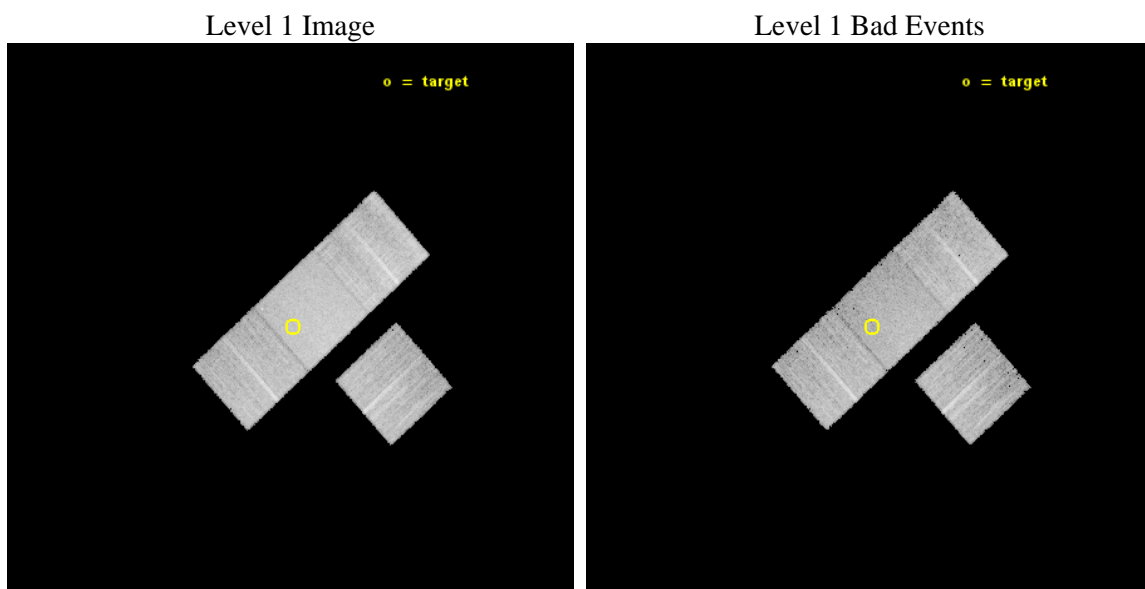




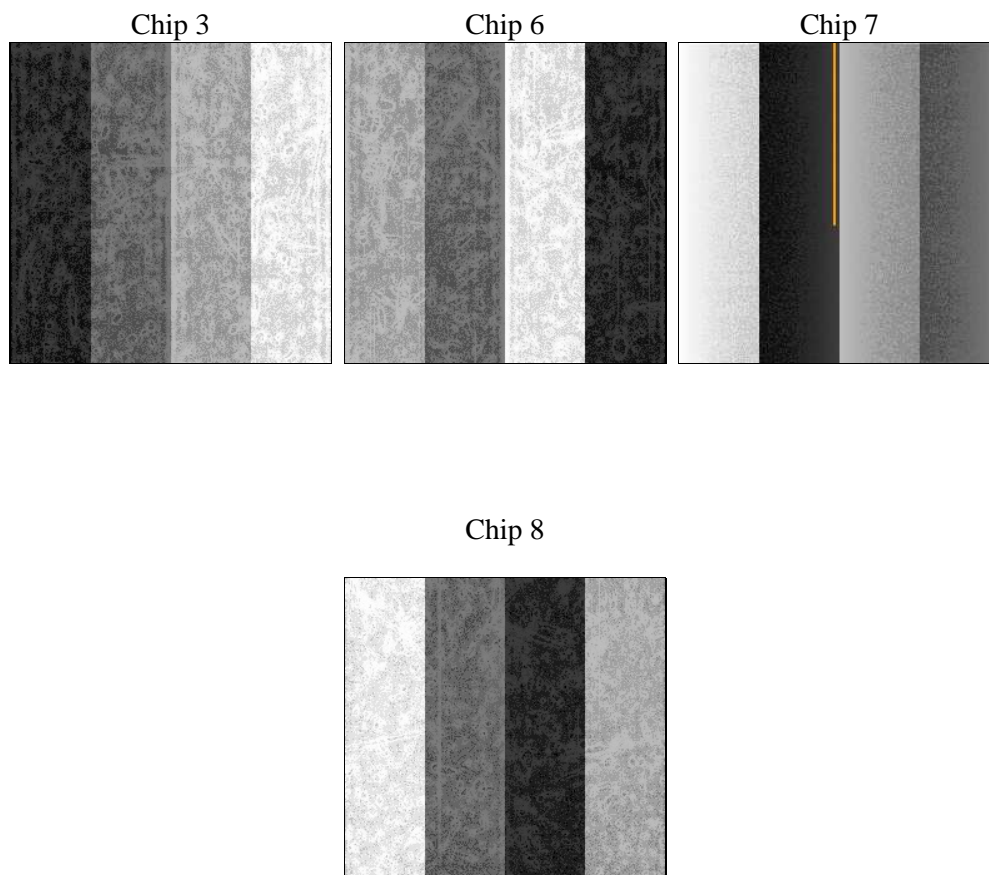
## 2 OBI

### 2.1 OBI

#### 2.1.1 Images



#### 2.1.2 Bias



### 2.1.3 Parameters

obi_num	0	Obi number	sched_exp_time	14600.000000	[s] Scheduled observation exposure time
ascdsver	10.3	Processing system revision	ontime	14672.266551912	Sum of GTIs [s]
caldsver	4.6.4	&#160	ontime3	14672.184471905	Sum of GTIs [s]
date	2014-11-29T18:59:35	Date and time of file creation	ontime6	14672.225511909	Sum of GTIs [s]
revision	1	Processing version of data	ontime7	14672.266551912	Sum of GTIs [s]
			ontime8	14672.143431902	Sum of GTIs [s]
			l1events	363196	Number of level 1 events

### 2.1.4 Events

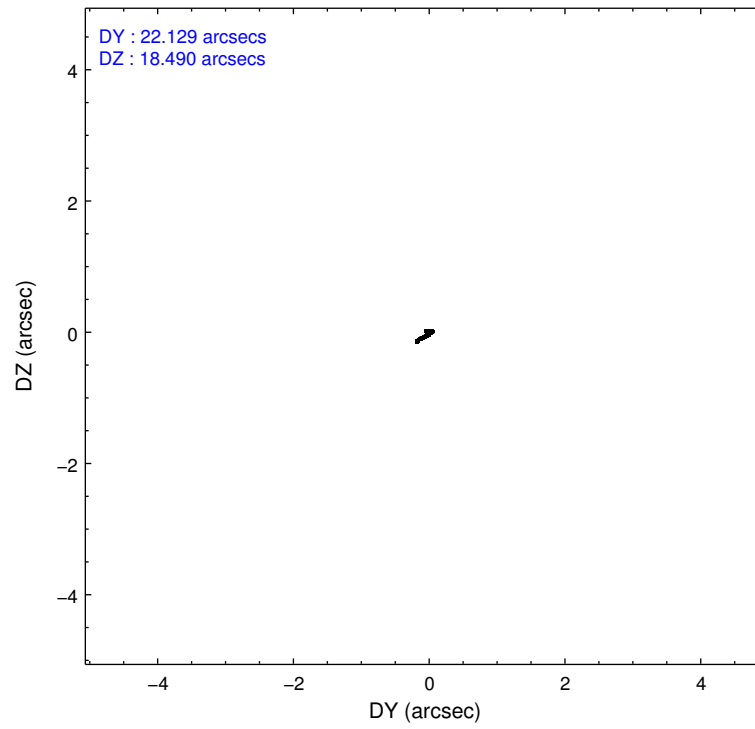
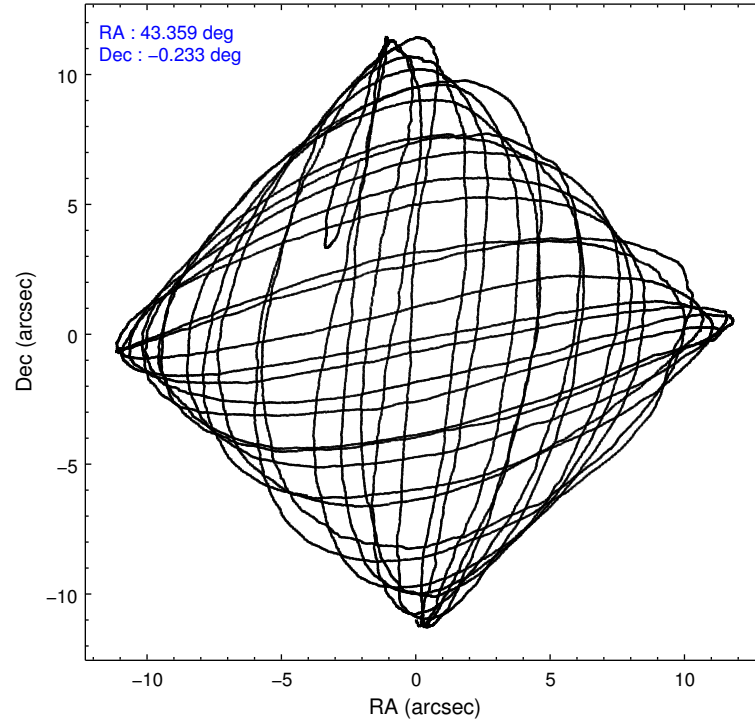
	ccd 3	ccd 6	ccd 7	ccd 8
level 1 events	76439	80205	105704	100848
rejected events	67967	71105	60692	75138
rejected %	88%	88%	57%	74%

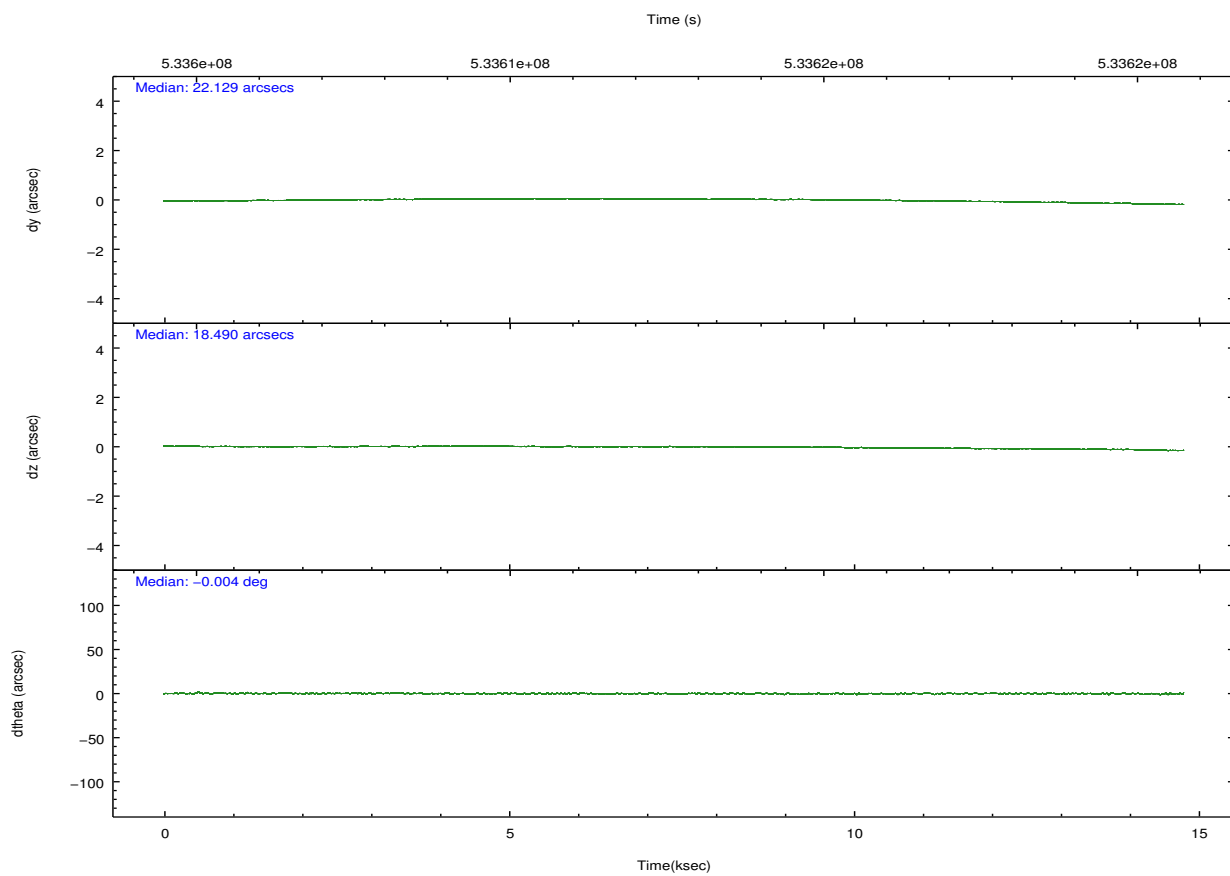
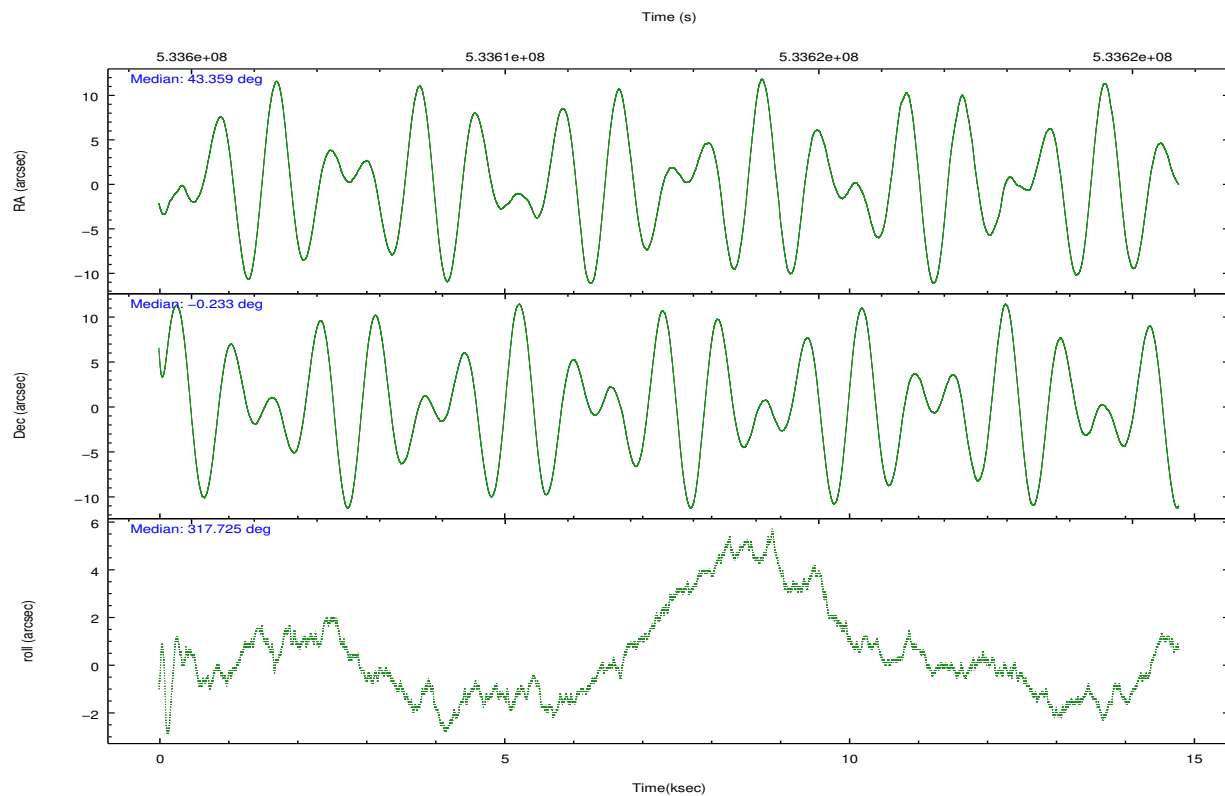
	ccd 3	ccd 6	ccd 7	ccd 8
grade 0 events	3040	3025	3672	7158
	3%	3%	3%	7%
grade 1 events	33	42	133	70
	0%	0%	0%	0%
grade 2 events	1809	2094	9416	6348
	2%	2%	8%	6%
grade 3 events	932	907	3461	2712
	1%	1%	3%	2%
grade 4 events	916	863	3465	2484
	1%	1%	3%	2%
grade 5 events	4012	3846	10303	5640
	5%	4%	9%	5%
grade 6 events	1777	2214	25018	7012
	2%	2%	23%	6%
grade 7 events	63920	67214	50236	69424
	83%	83%	47%	68%

## 2.2 Compared Parameters

Parameter	Planned	Actual	Parameter	Planned	Actual
Instrument	ACIS	ACIS	Obspar format version number	7	7
Detector	ACIS-3678	ACIS-3678	Obspar file type	PREDICTED	ACTUAL
Grating	NONE	NONE	Obspar update status	NONE	UPDATED
Data mode	VFAINT	VFAINT	CCD I0 on	N	N
Observation mode	POINTING	POINTING	CCD I1 on	N	N
[deg] Pointing RA	43.332702	43.35959670340333	CCD I2 on	N	N
[deg] Pointing Dec	-0.227335	-0.2327783450678086	CCD I3 on	O1	Y
[deg] Pointing Roll	317.573509	317.7302457862678	CCD S0 on	N	N
[mm] SIM focus pos	-0.684267	-0.6828225247311905	CCD S1 on	N	N
[mm] SIM defocus	0	0.001444936568705701	CCD S2 on	O2	Y
[mm] SIM translation stage pos	-190.132523	-190.1425803651734	CCD S3 on	Y	Y
[mm] SIM translation stage offset	0	0.01005778216563158	CCD S4 on	O3	Y
[s] Observation start time (MET)	533605388.184000	533603925.85543	CCD S5 on	N	N
Observation start date	2014-11-28T23:42:01	2014-11-28T23:18:45	Number of optional ACIS chips dropped	0	0
[s] Observation end time (MET)	533619988.184000	533620619.51886	On-chip summing requested	N	N
Observation end date	2014-11-29T03:45:21	2014-11-29T03:56:59	Subarray requested	NONE	NONE
Read mode	TIMED	TIMED	Alternating exposures requested	N	N
			[s] Primary exposure time	0.000000	3.1

## 2.3 Aspect



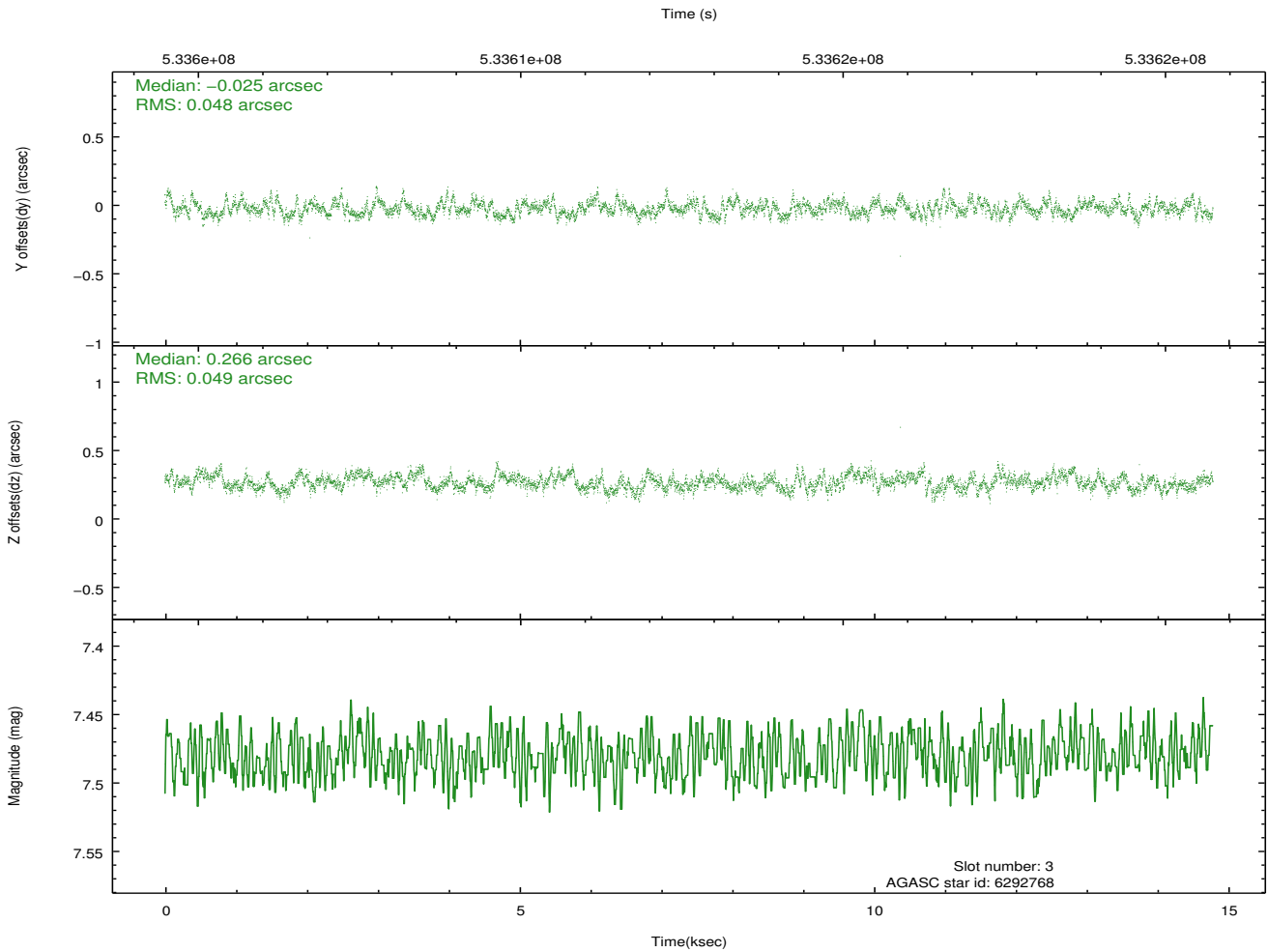
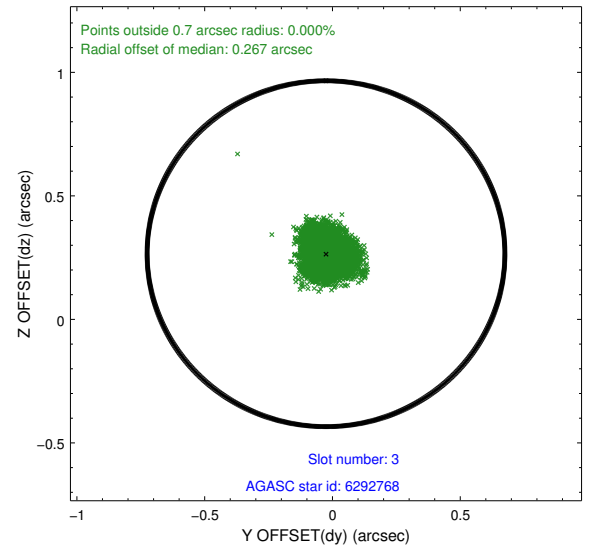
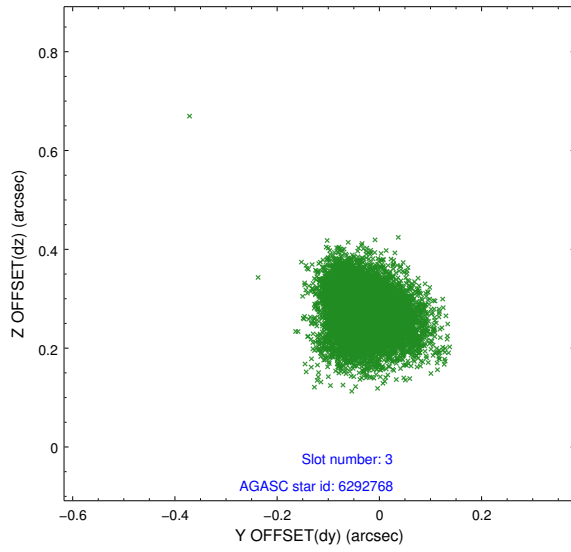


### Slot Statistics

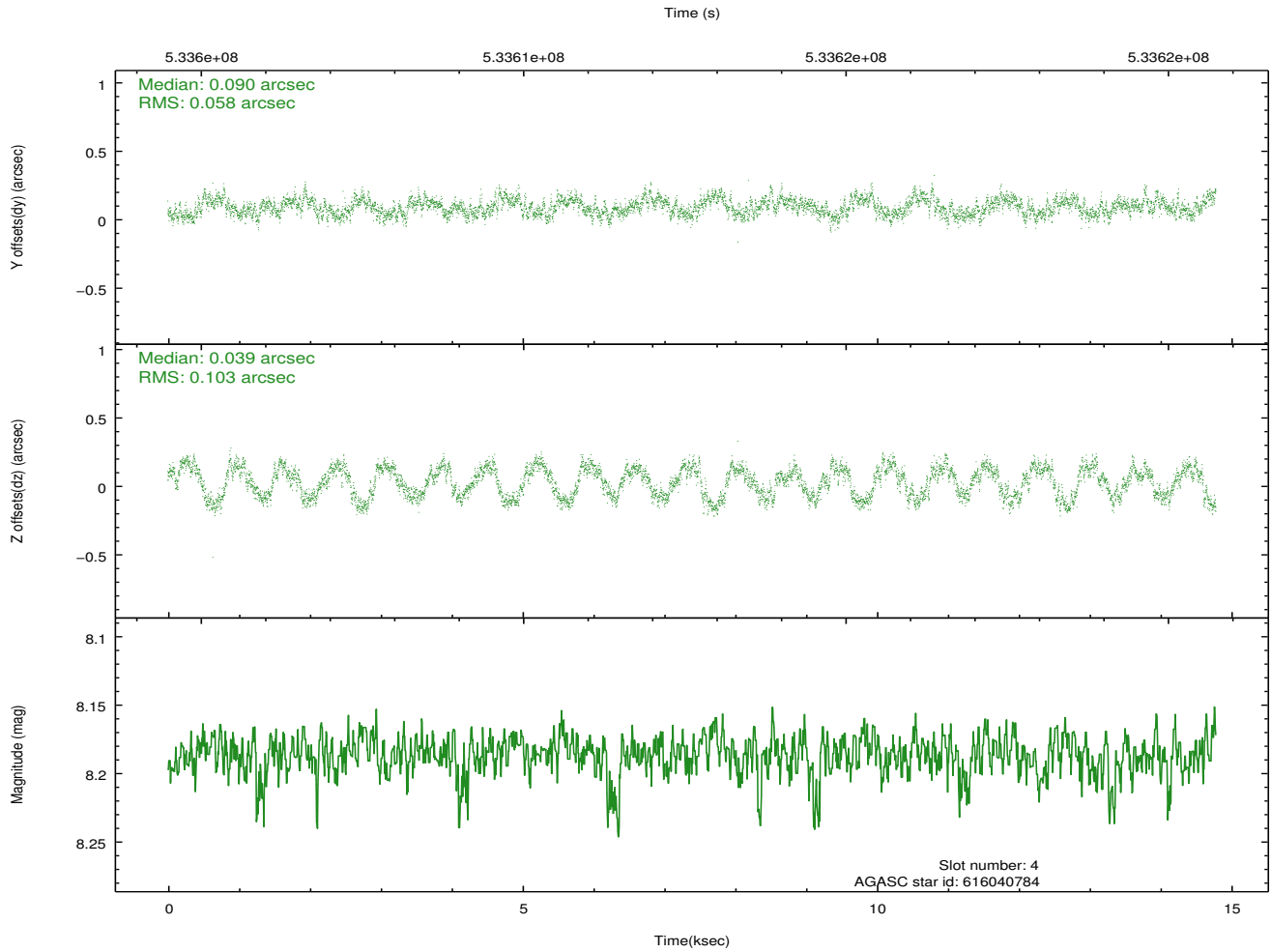
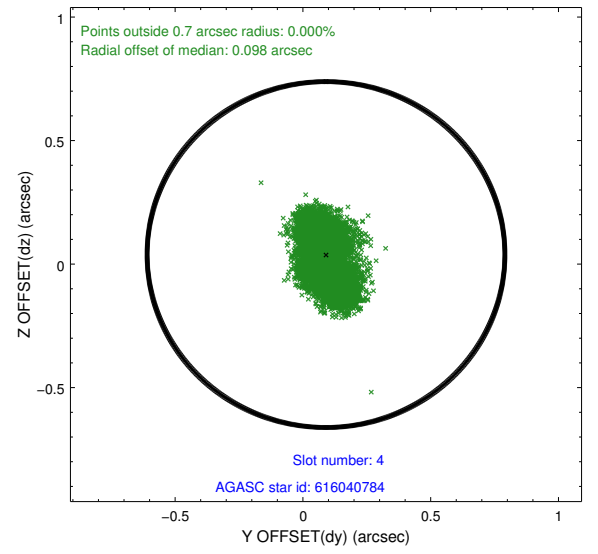
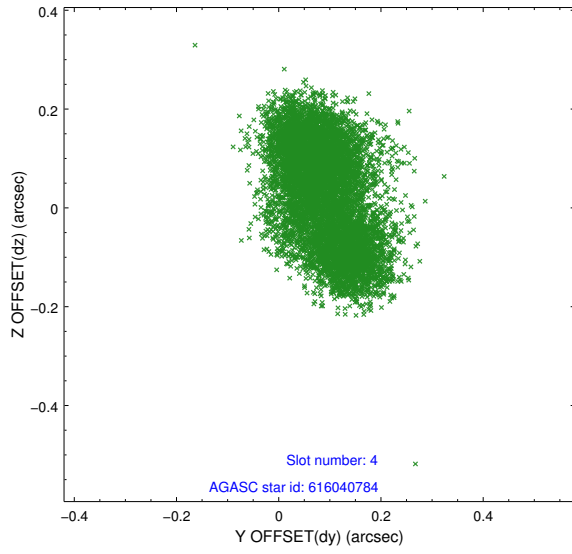
slot	status	used	id	mag	n_pts	med_dy	med_dz	dr1	dr2	ra	dec	mean_y	mean_z
0	FID		ACIS-S-2	7.10	3607	-0.123	-0.096	0.007	0.011	0.000000	0.000000	-775.41	-1739.98
1	FID		ACIS-S-4	7.19	3607	0.325	0.085	0.006	0.011	0.000000	0.000000	2138.19	168.35
2	FID		ACIS-S-5	7.22	3607	-0.234	0.020	0.007	0.012	0.000000	0.000000	-1827.96	162.33
3	GUIDE	used	6292768	7.48	7214	-0.025	0.266	0.073	0.116	42.872770	0.086383	-1983.78	-282.80
4	GUIDE	used	616040784	8.19	7212	0.090	0.039	0.130	0.193	43.048598	-0.650379	273.39	-1814.27
5	GUIDE	used	616041600	7.63	7212	0.265	0.118	0.219	0.300	42.861991	-0.687877	-130.70	-2366.13
6	GUIDE	used	616044168	8.33	7213	-0.259	-0.247	0.131	0.188	44.042202	-0.199713	1818.66	1796.35
7	GUIDE	used	616046664	8.67	7212	-0.094	-0.193	0.078	0.129	43.864980	-0.469012	2002.56	650.71

## 2.4 Star Slots

### 2.4.1 Slot 3

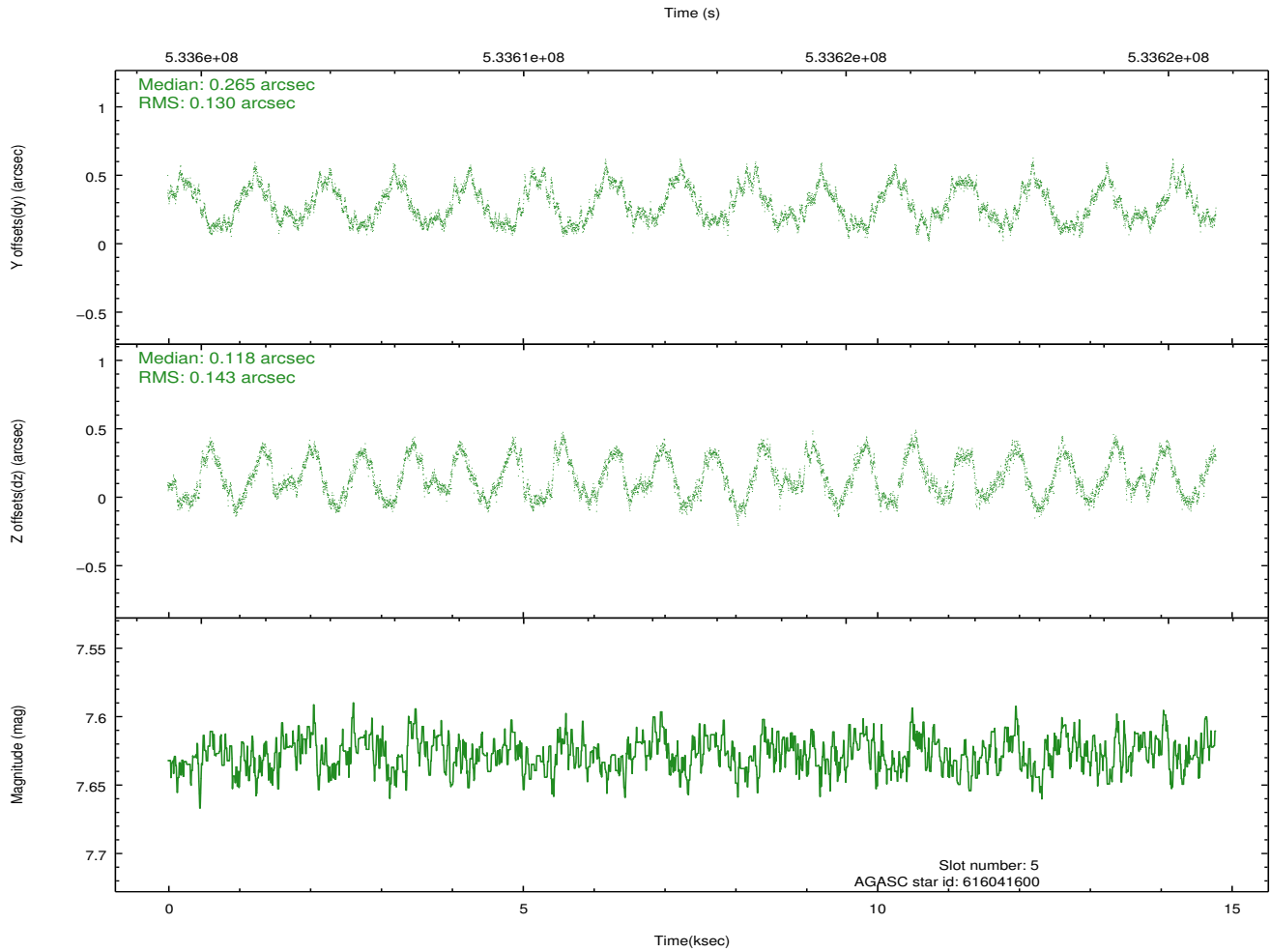
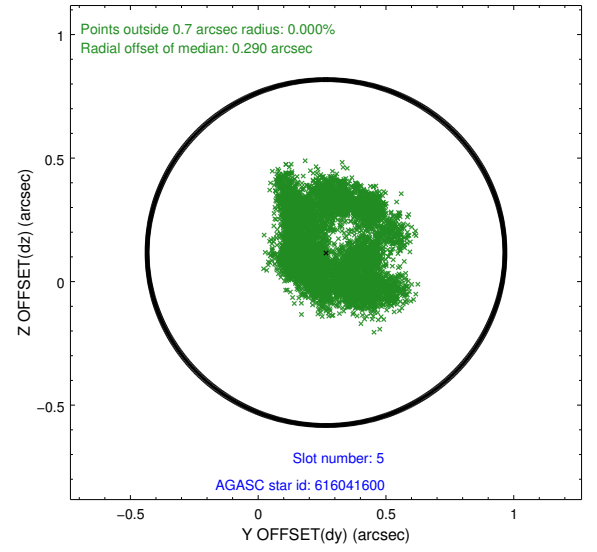
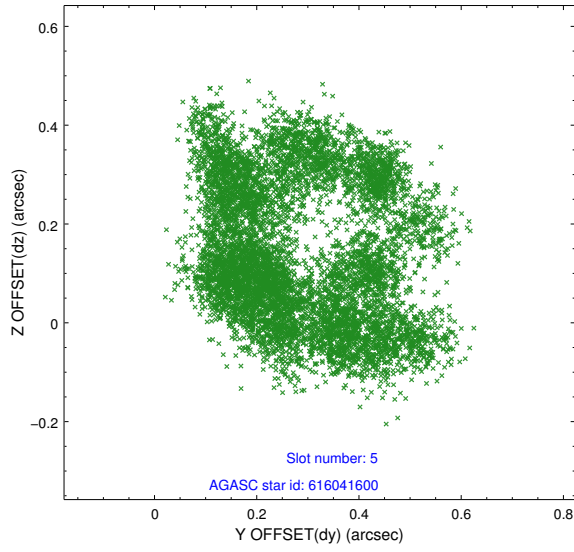


## 2.4.2 Slot 4

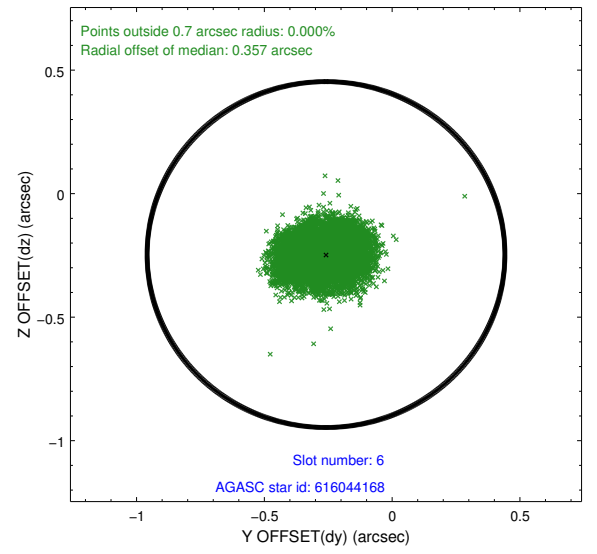
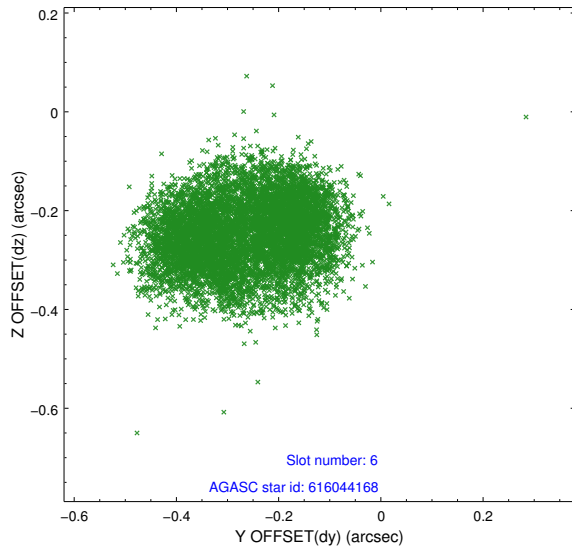




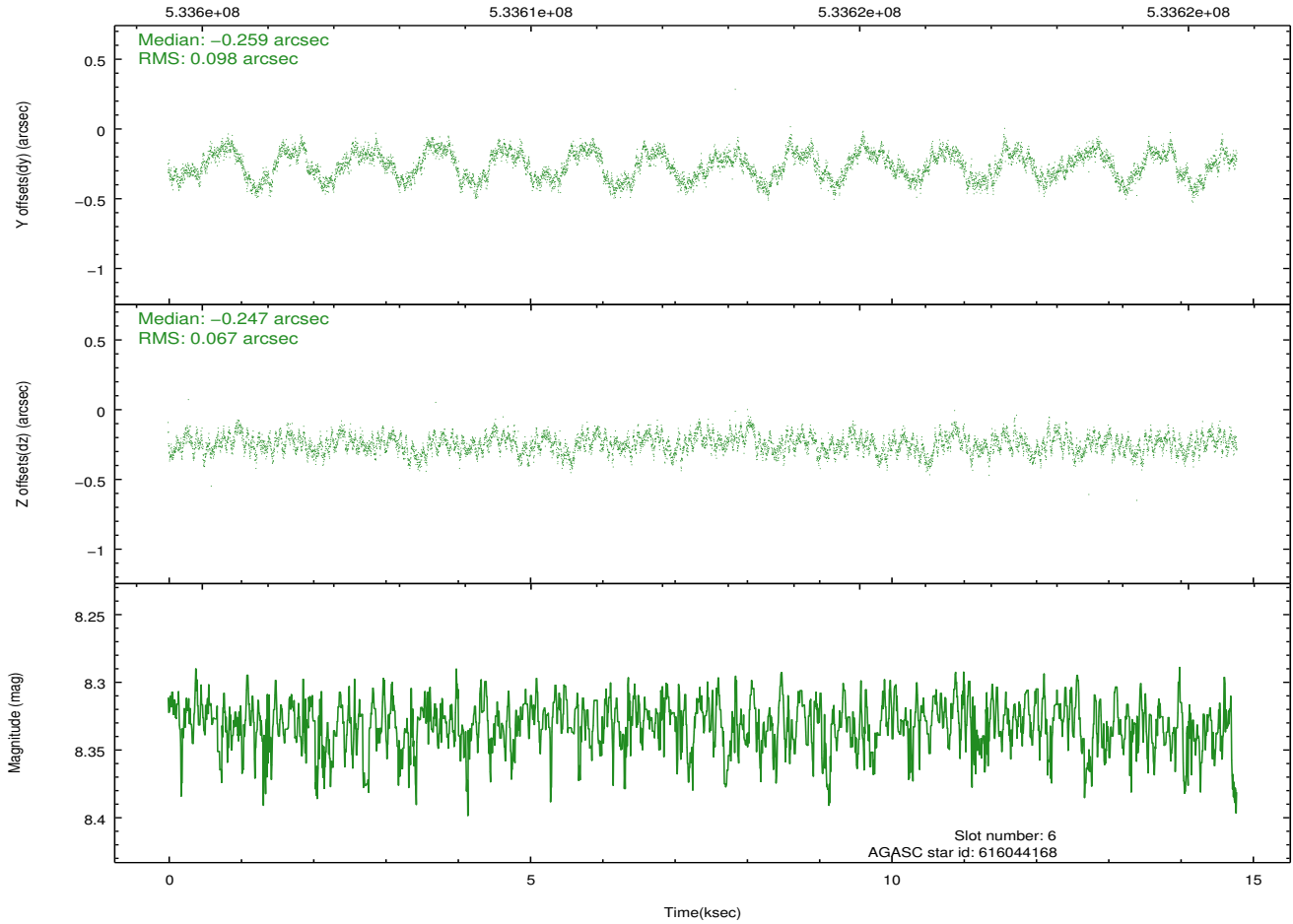
### 2.4.3 Slot 5



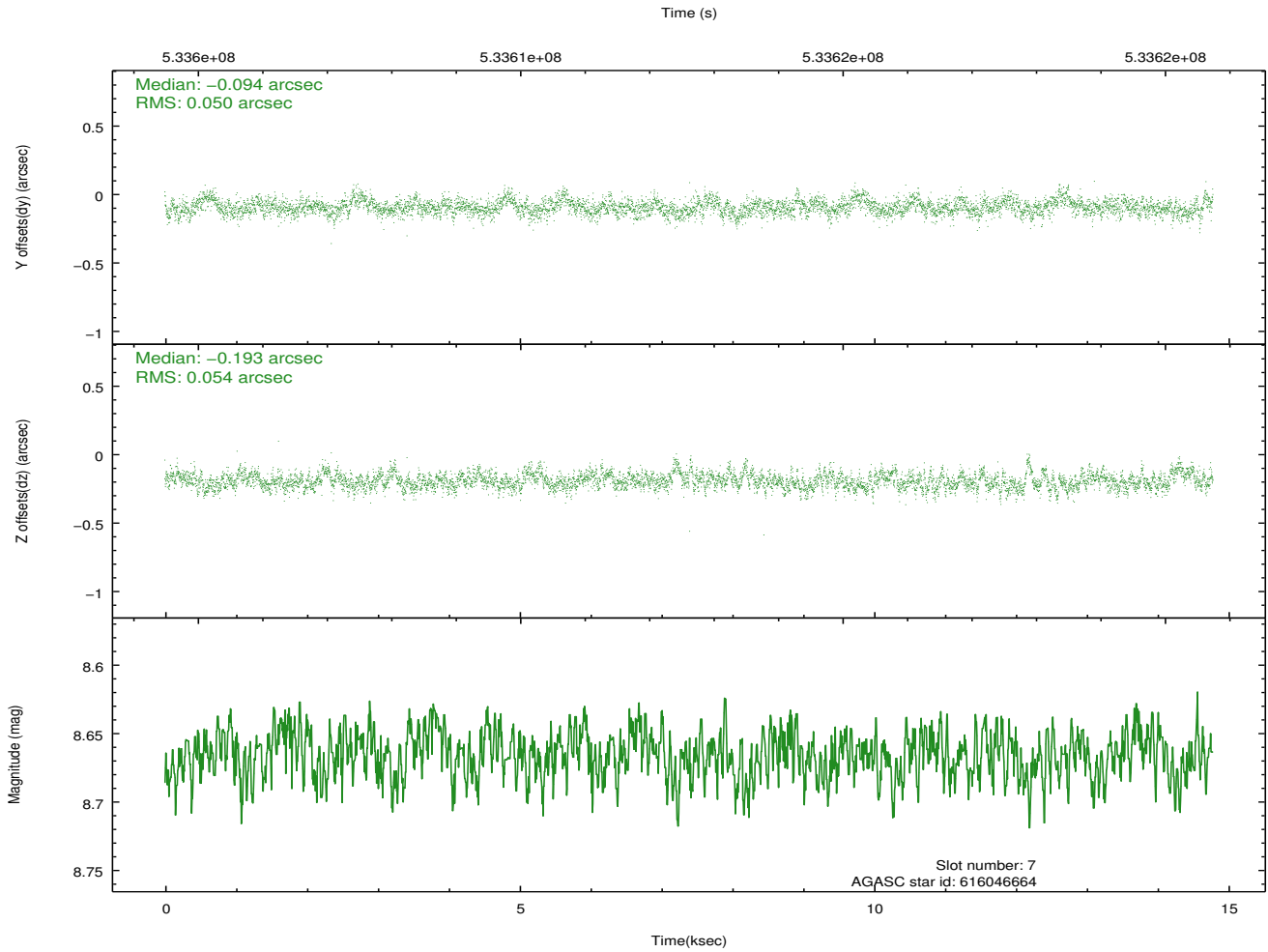
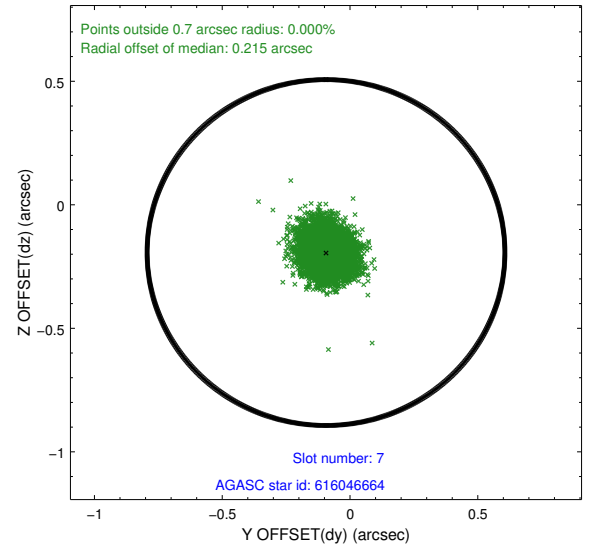
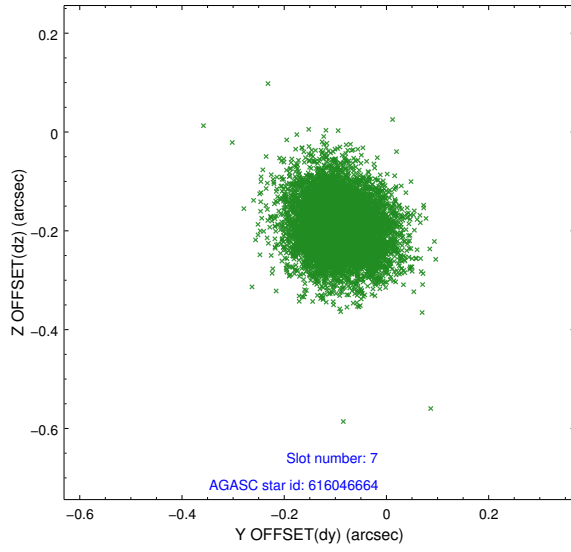
## 2.4.4 Slot 6



Time (s)

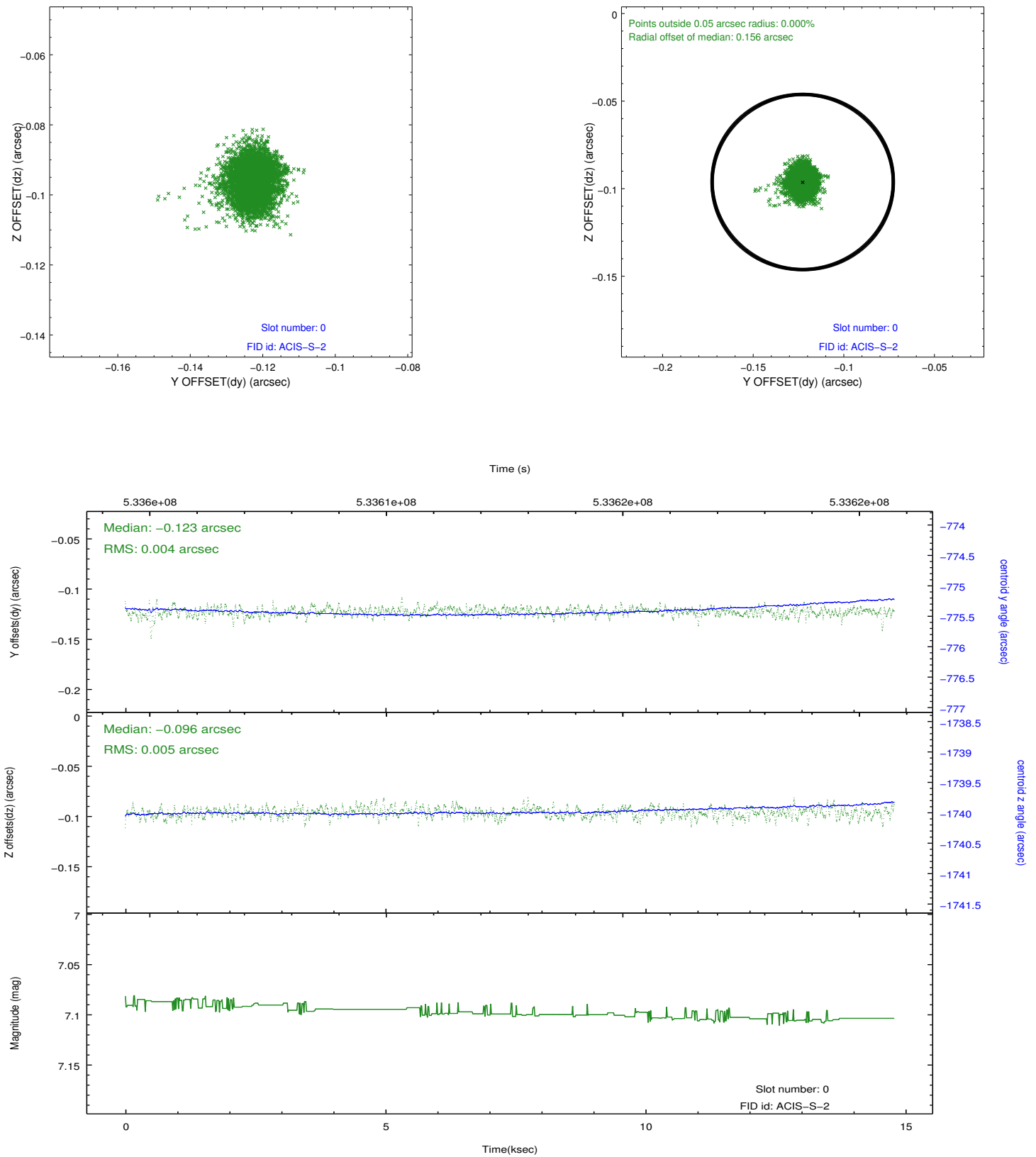


## 2.4.5 Slot 7

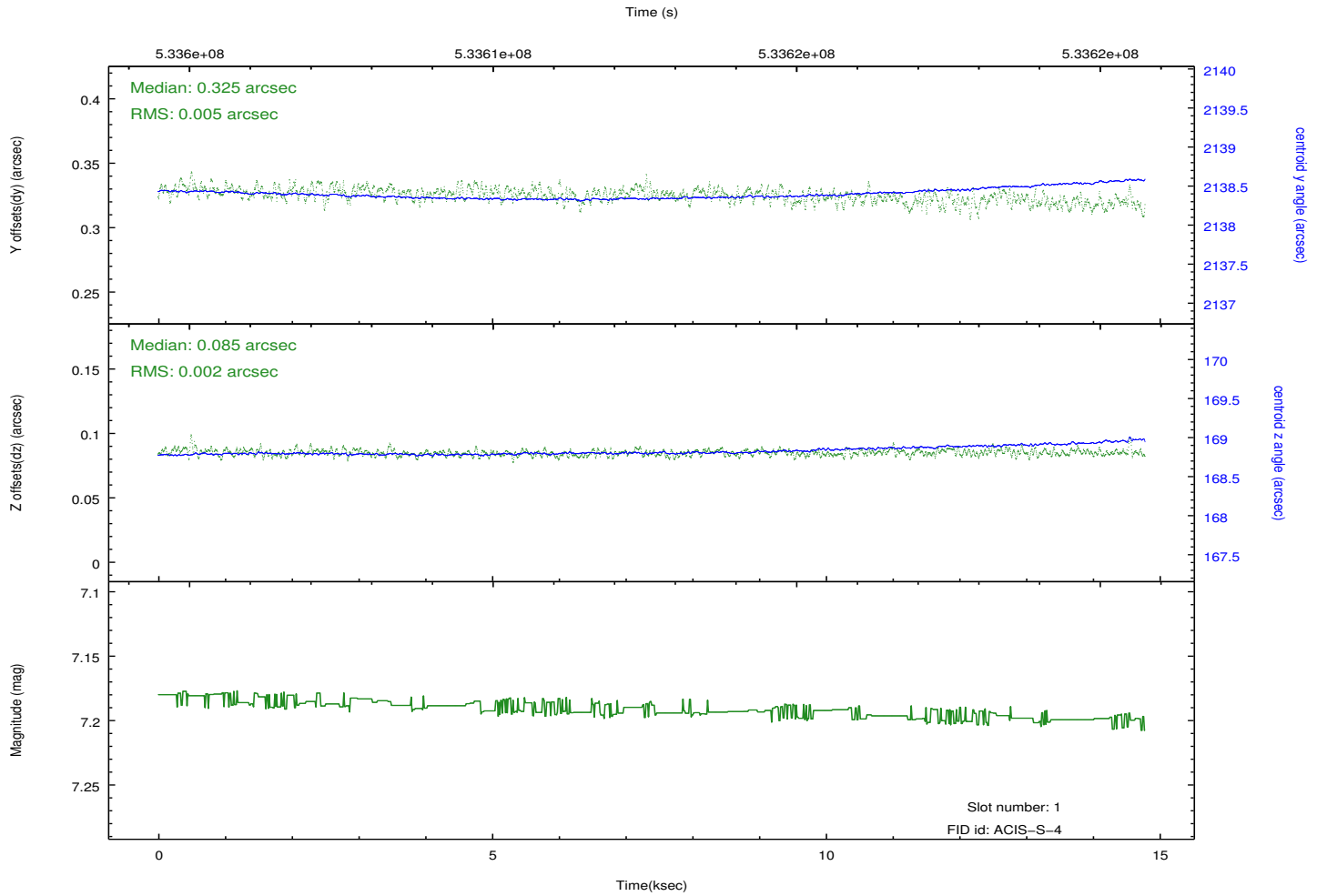
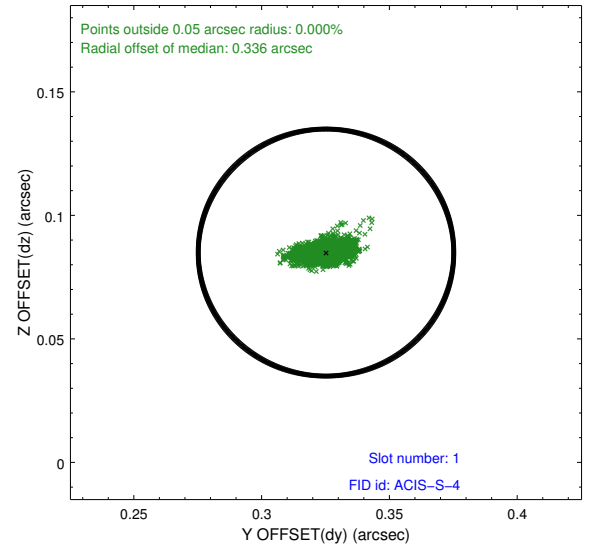
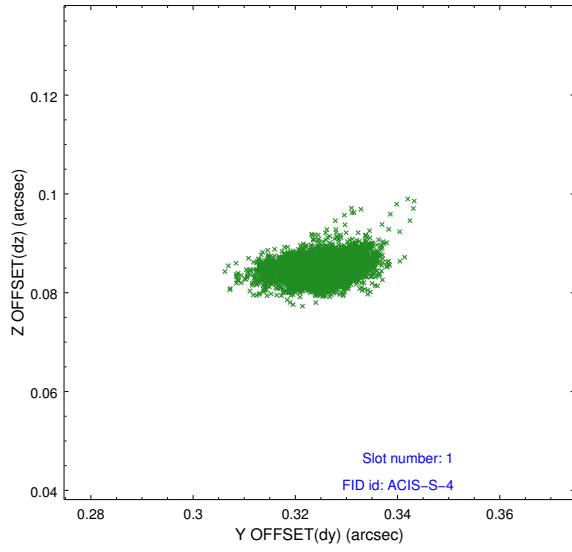


## 2.5 FID Slots

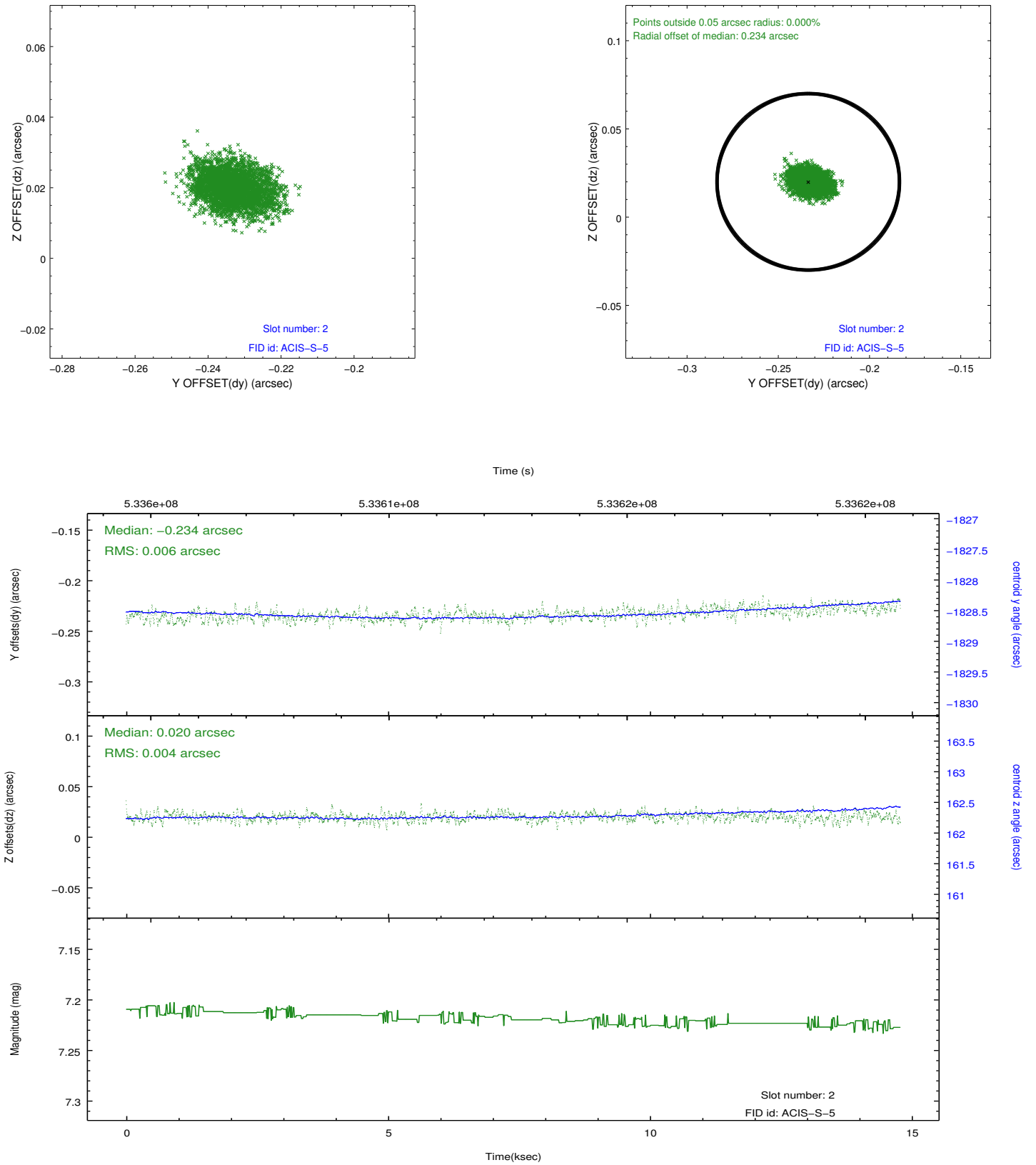
### 2.5.1 Slot 0



## 2.5.2 Slot 1



### 2.5.3 Slot 2



## A Summary

### A.1 Status

V&V Scientist	Joy Nichols
V&V Date (YYYY-MM-DD)	2014.12.01
V&V Edition	1
V&V Disposition and Status	OK
V&V Charge Time	14.672266551912

### A.2 Comments