

V&V Reference Report

L2 ASCDS Version : 10.3

Observation 16342 - L2 Version 1
Chandra X-Ray Center

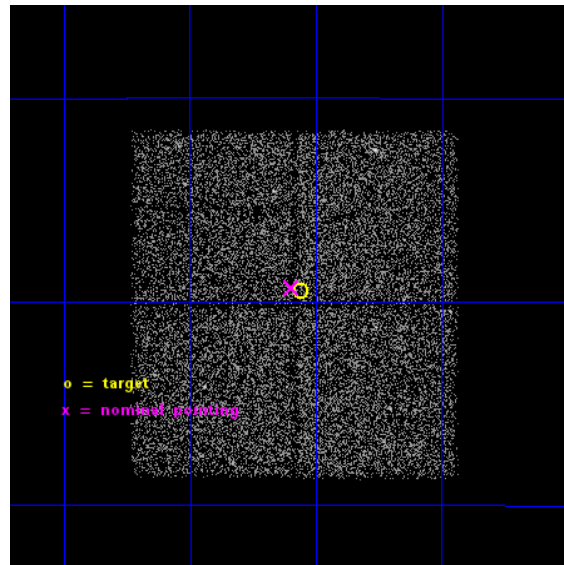
L2 Processing Date : Nov 24 2014

Contents

1	Front	2
2	OBI	3
2.1	OBI	3
2.1.1	Images	3
2.1.2	Bias	3
2.1.3	Parameters	4
2.1.4	Events	4
2.2	Compared Parameters	5
2.3	Aspect	6
2.4	Star Slots	9
2.4.1	Slot 3	9
2.4.2	Slot 4	10
2.4.3	Slot 5	11
2.4.4	Slot 6	12
2.4.5	Slot 7	13
2.5	FID Slots	14
2.5.1	Slot 0	14
2.5.2	Slot 1	15
2.5.3	Slot 2	16
A	Summary	17
A.1	Status	17
A.2	Comments	17

1 Front

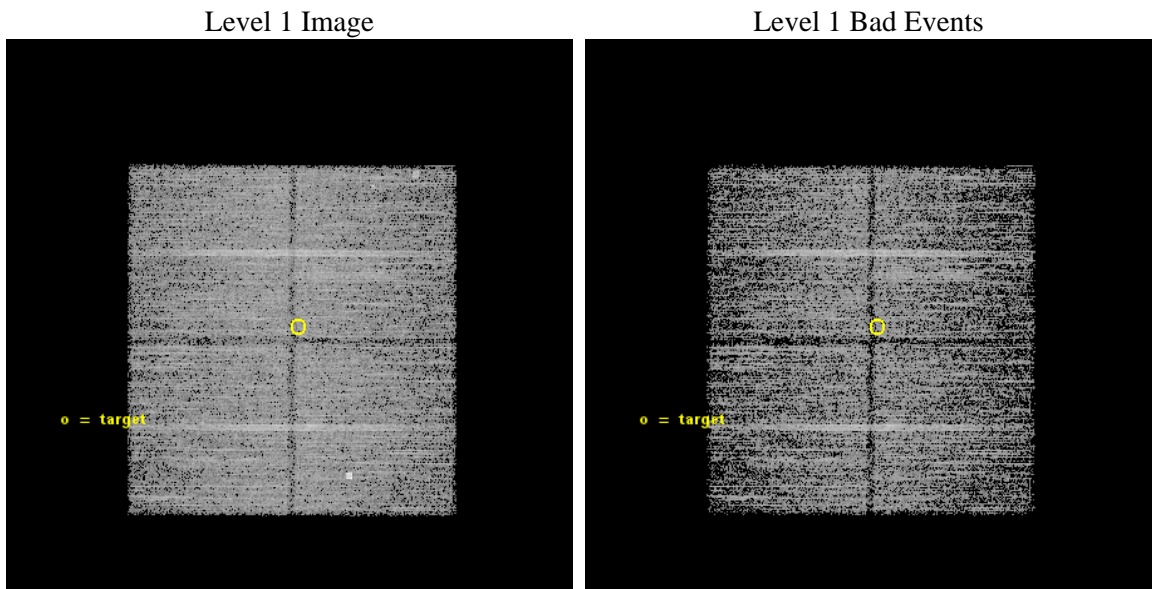
seq_num	901127	Sequence number
obs_id	16342	Observation id
title	A Wide-Field Survey in the Chandra Deep Field-South Region: A Combined GTO + GO Approach	Proposal title
observer	Professor Gordon Garmire	Principal investigator
object	CDFS-WF23	Source name
dtcycle	0	
cycle	P	events from which exps? Prim/Second/Both
ra_targ	53.265417	Observer's specified target RA [deg]
dec_targ	-28.491139	Observer's specified target Dec [deg]
ra_nom	53.274272973456	Nominal RA [deg]
dec_nom	-28.488650143537	Nominal Dec [deg]
roll_nom	0.21289280465763	Nominal Roll [deg]
revision	1	Processing version of data
ontime	14791.791220248	Sum of GTIs [s]
livetime	14598.525578397	Livetime [s]
ontime0	14791.668100238	Sum of GTIs [s]
ontime1	14791.709140241	Sum of GTIs [s]
ontime2	14791.750180244	Sum of GTIs [s]
ontime3	14791.791220248	Sum of GTIs [s]
l2events	26942	Number of level 2 events



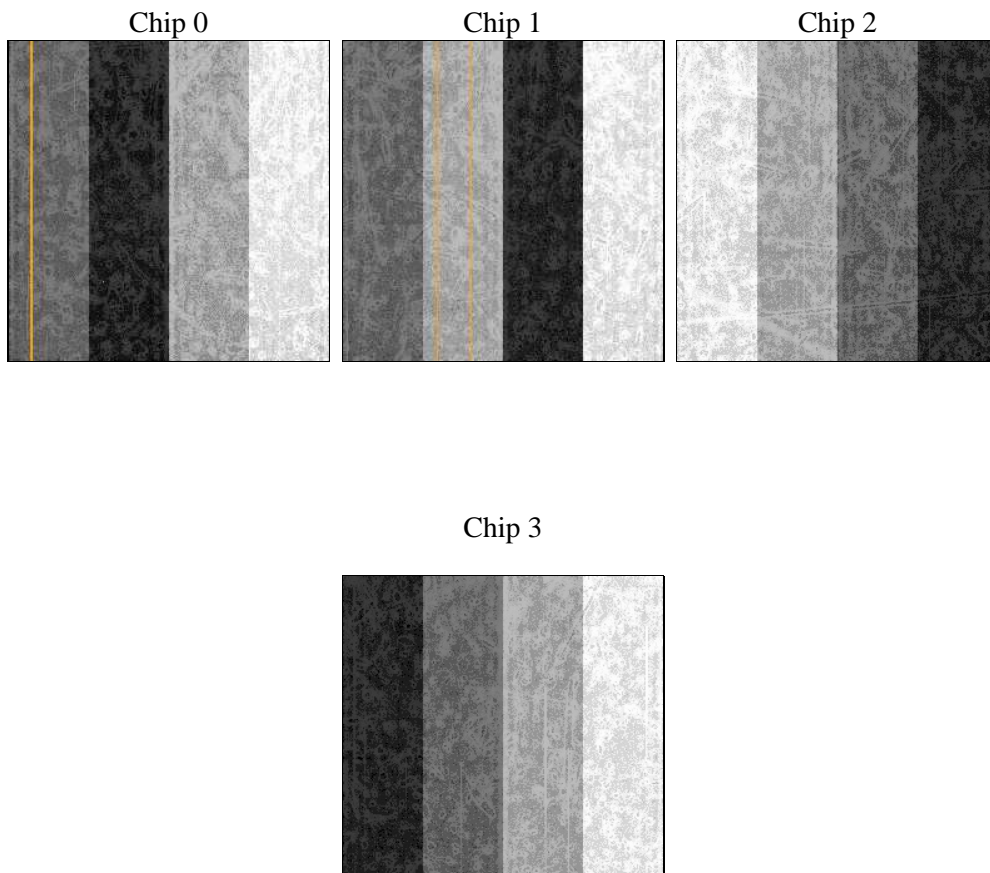
2 OBI

2.1 OBI

2.1.1 Images



2.1.2 Bias



2.1.3 Parameters

obi_num	0	Obi number	sched_exp_time	15000.000000	[s] Scheduled observation exposure time
ascdsver	10.3	Processing system revision	ontime	14791.791220248	Sum of GTIs [s]
caldsver	4.6.4	 	ontime0	14791.668100238	Sum of GTIs [s]
date	2014-11-25T03:04:52	Date and time of file creation	ontime1	14791.709140241	Sum of GTIs [s]
revision	1	Processing version of data	ontime2	14791.750180244	Sum of GTIs [s]
			ontime3	14791.791220248	Sum of GTIs [s]
			l1events	274033	Number of level 1 events

2.1.4 Events

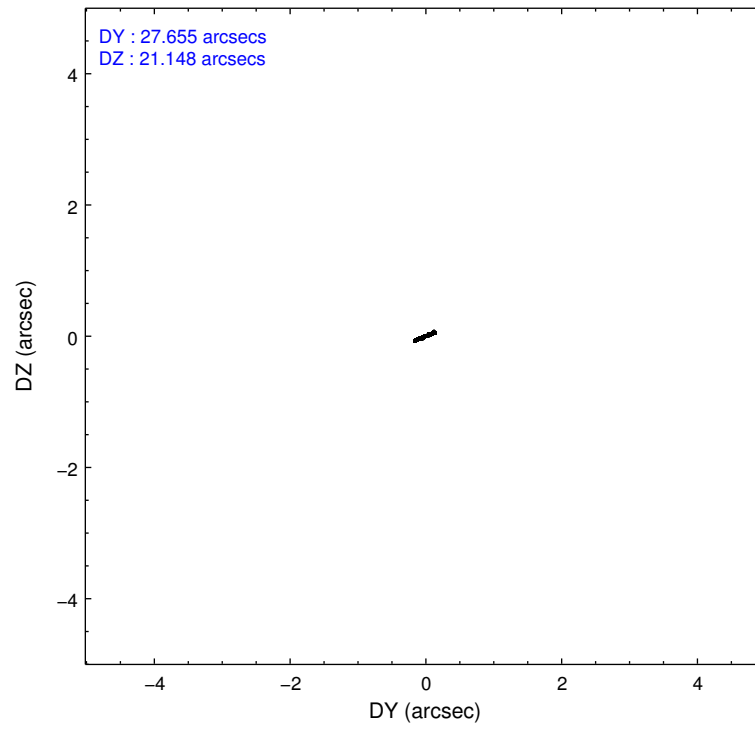
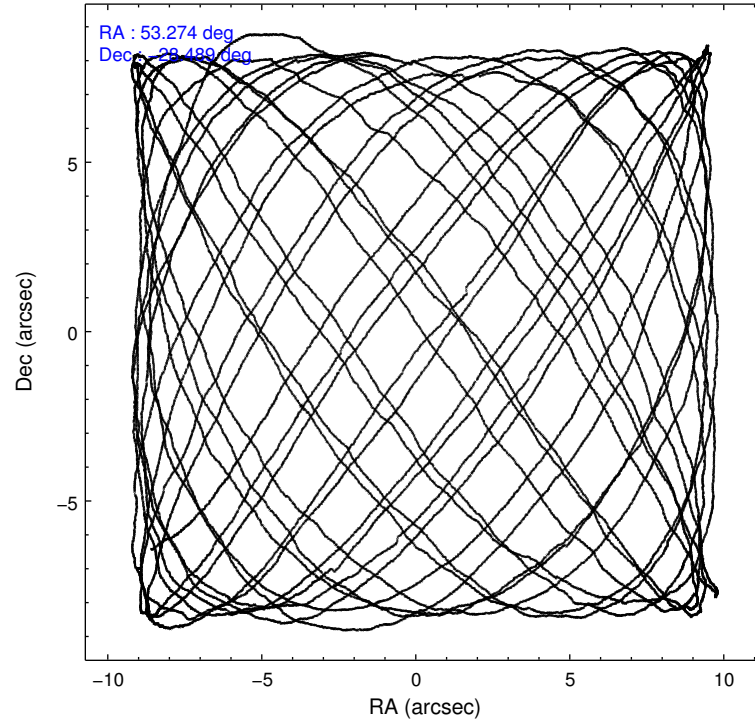
	ccd 0	ccd 1	ccd 2	ccd 3
level 1 events	67580	67603	70655	68195
rejected events	59405	57691	62771	60175
rejected %	87%	85%	88%	88%

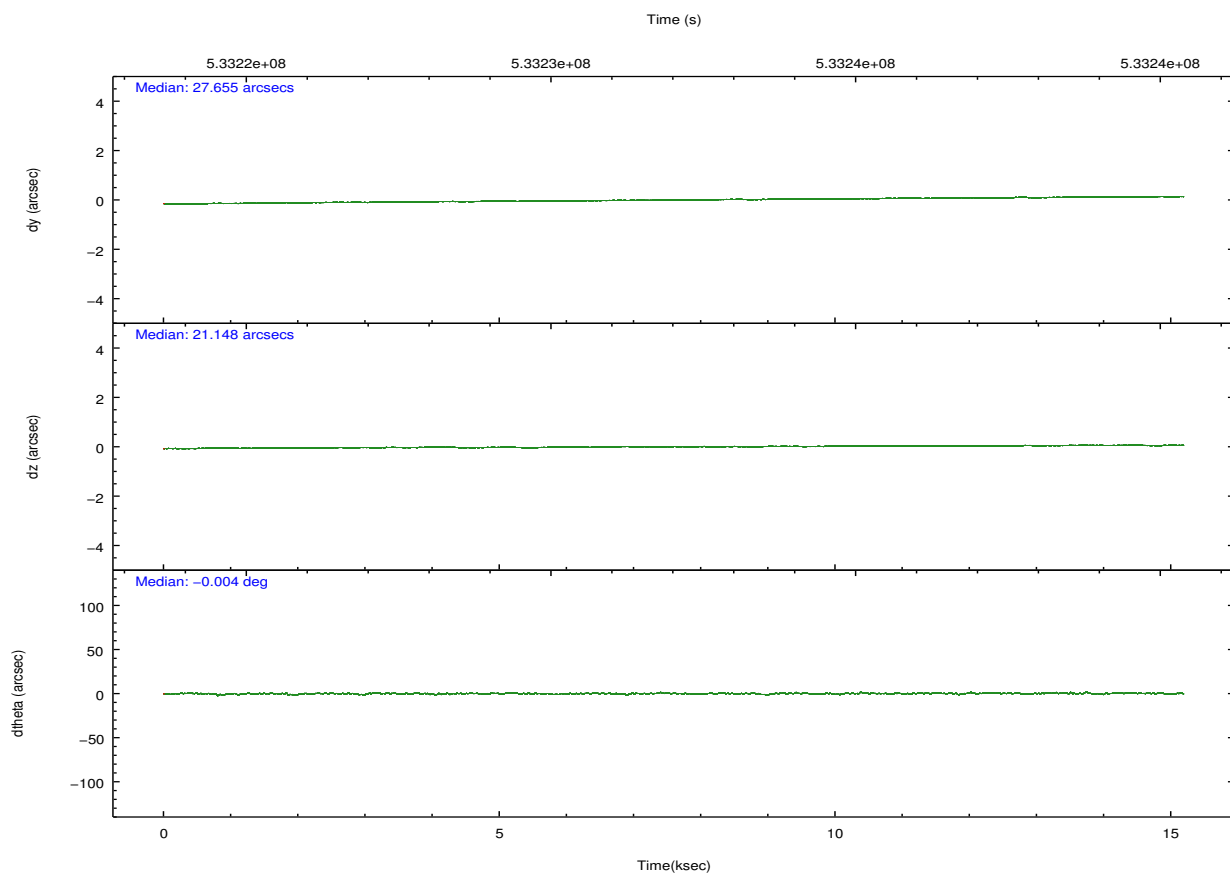
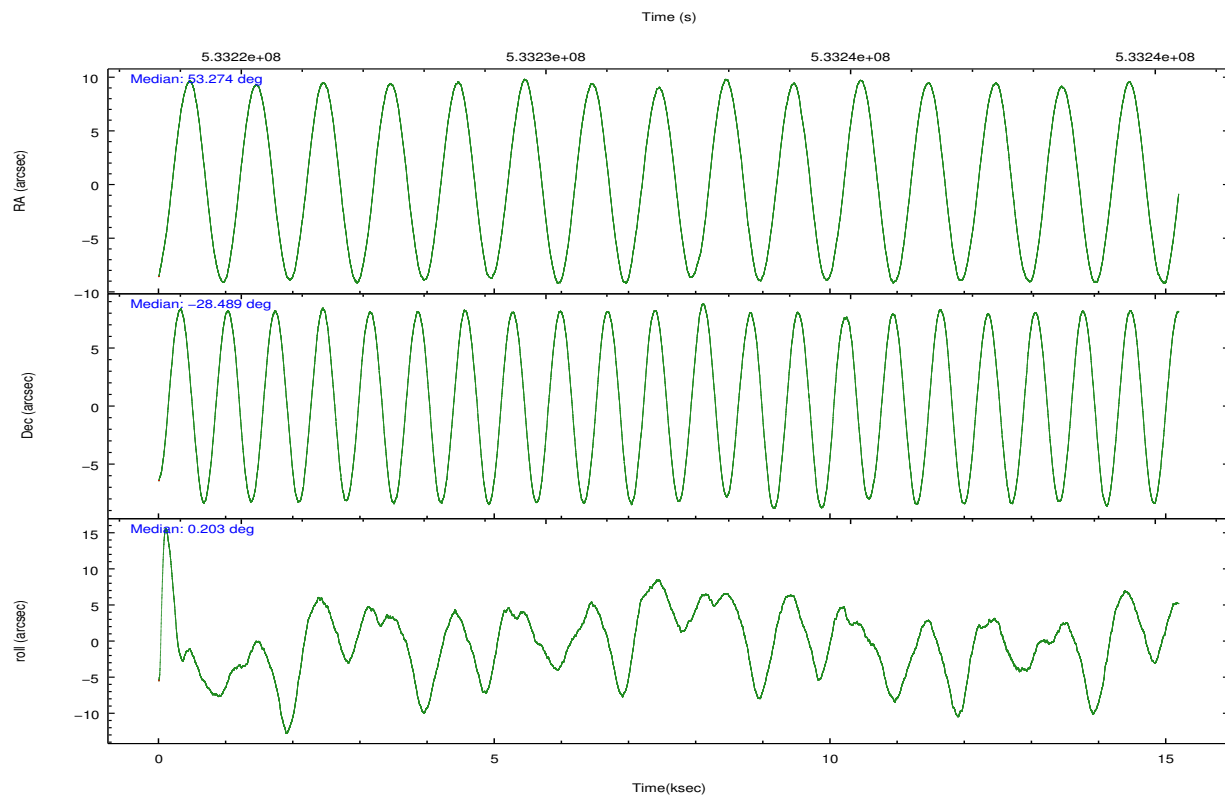
	ccd 0	ccd 1	ccd 2	ccd 3
grade 0 events	2886	4241	2900	2884
	4%	6%	4%	4%
grade 1 events	44	41	42	32
	0%	0%	0%	0%
grade 2 events	2012	2050	1928	1931
	2%	3%	2%	2%
grade 3 events	903	868	834	761
	1%	1%	1%	1%
grade 4 events	779	875	772	846
	1%	1%	1%	1%
grade 5 events	2716	2952	2615	3198
	4%	4%	3%	4%
grade 6 events	1597	1882	1452	1603
	2%	2%	2%	2%
grade 7 events	56643	54694	60112	56940
	83%	80%	85%	83%

2.2 Compared Parameters

Parameter	Planned	Actual	Parameter	Planned	Actual
Instrument	ACIS	ACIS	Obspar format version number	7	7
Detector	ACIS-0123	ACIS-0123	Obspar file type	PREDICTED	ACTUAL
Grating	NONE	NONE	Obspar update status	NONE	UPDATED
Data mode	VFAINT	VFAINT	Number of optional ACIS chips dropped	0	0
Observation mode	POINTING	POINTING	On-chip summing requested	N	N
[deg] Pointing RA	53.247212	53.27427297345563	Subarray requested	NONE	NONE
[deg] Pointing Dec	-28.502636	-28.48865014353724	Alternating exposures requested	N	N
[deg] Pointing Roll	359.991316	0.2128928046576271	[s] Primary exposure time	0.000000	3.1
[mm] SIM focus pos	-0.782348	-0.7809083437167272			
[mm] SIM defocus	0	0.001439871863259334			
[mm] SIM translation stage pos	-233.592463	-233.5874344608287			
[mm] SIM translation stage offset	0	-0.005018542100998502			
[s] Observation start time (MET)	533224610.184000	533224234.57176			
Observation start date	2014-11-24T13:55:43	2014-11-24T13:50:34			
[s] Observation end time (MET)	533239610.184000	533239744.36012			
Observation end date	2014-11-24T18:05:43	2014-11-24T18:09:04			
Read mode	TIMED	TIMED			

2.3 Aspect



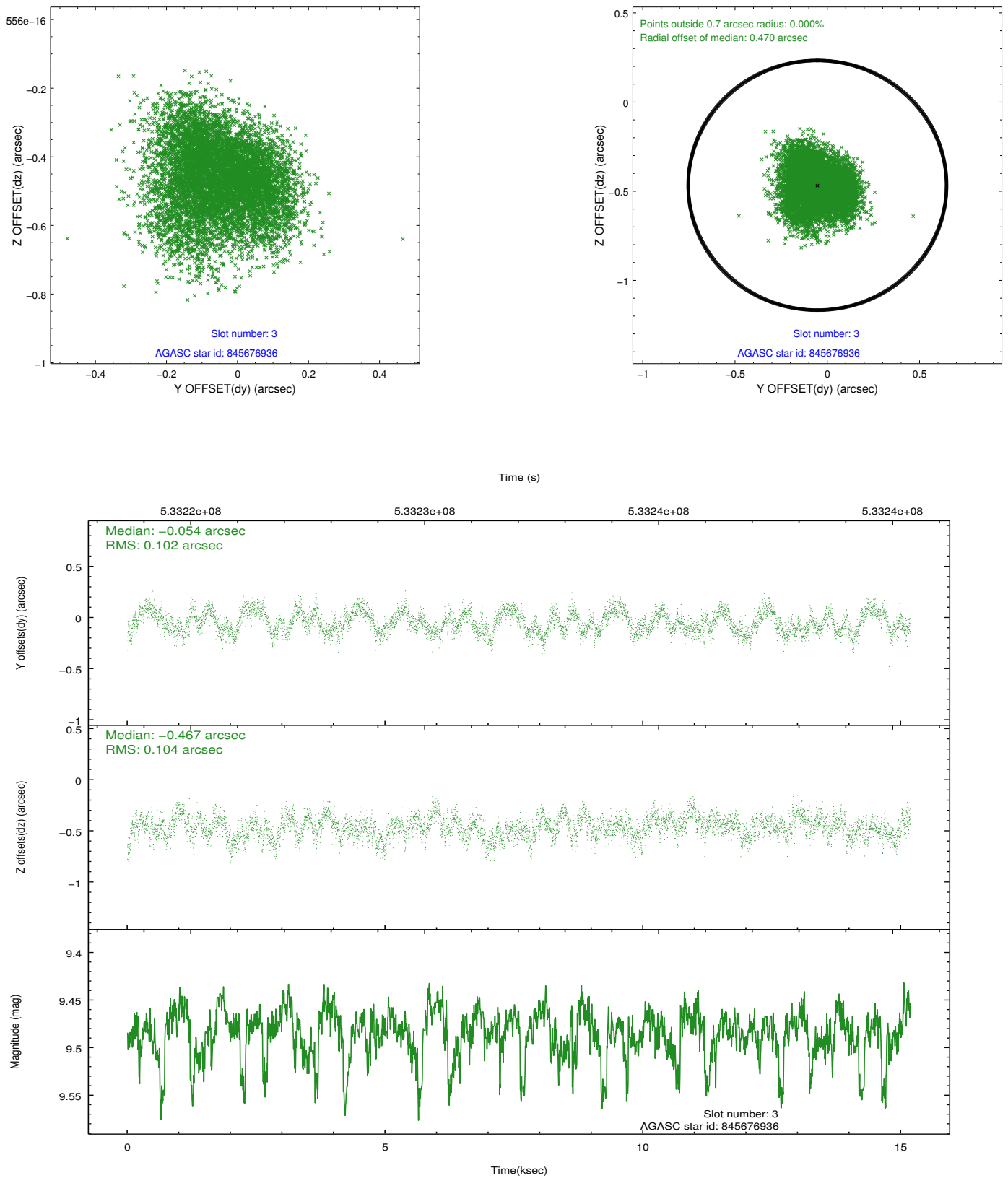


Slot Statistics

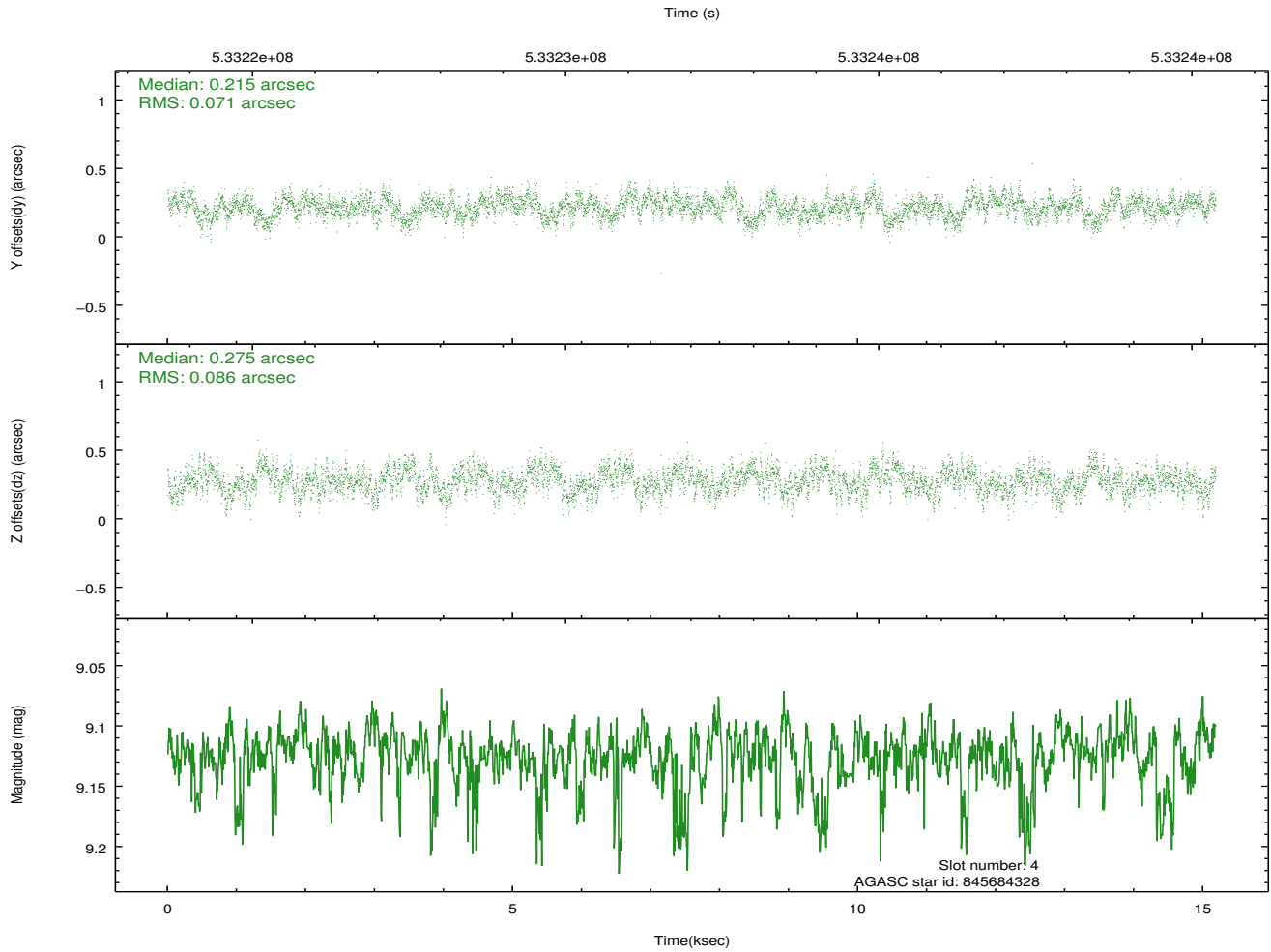
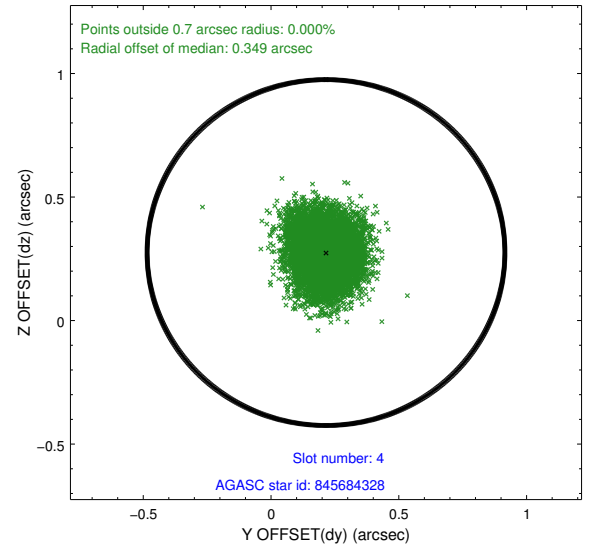
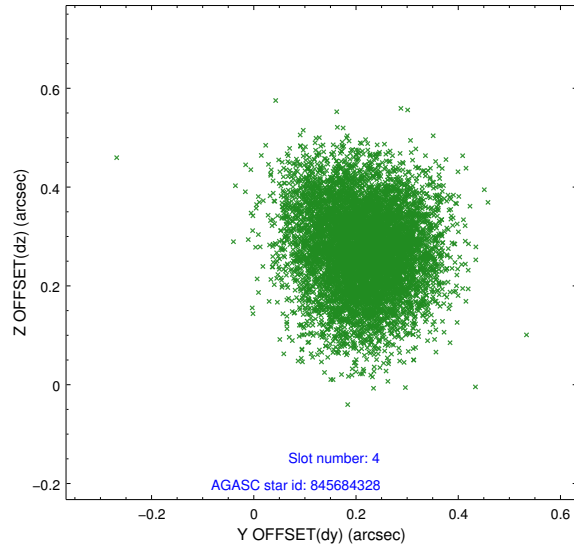
slot	status	used	id	mag	n_pts	med_dy	med_dz	dr1	dr2	ra	dec	mean_y	mean_z
0	FID		ACIS-I-1	7.19	3705	0.060	-0.041	0.008	0.013	0.000000	0.000000	911.55	-844.91
1	FID		ACIS-I-5	7.18	3704	-0.305	0.032	0.011	0.021	0.000000	0.000000	-1836.83	1052.41
2	FID		ACIS-I-6	7.18	3704	0.155	0.079	0.009	0.016	0.000000	0.000000	376.78	1697.37
3	GUIDE	used	845676936	9.48	7404	-0.054	-0.467	0.159	0.244	52.843773	-27.880153	-1283.79	2238.47
4	GUIDE	used	845684328	9.12	7402	0.215	0.275	0.120	0.192	53.019422	-29.016107	-715.80	-1848.21
5	GUIDE	used	845814592	9.02	7400	-0.166	-0.400	0.136	0.218	53.853010	-28.336603	1921.33	591.23
6	GUIDE	used	845816344	9.23	7395	0.175	0.552	0.167	0.260	53.137522	-28.675689	-345.50	-622.30
7	GUIDE	used	845816576	9.27	7402	-0.177	0.042	0.125	0.205	53.727820	-28.842154	1515.97	-1224.71

2.4 Star Slots

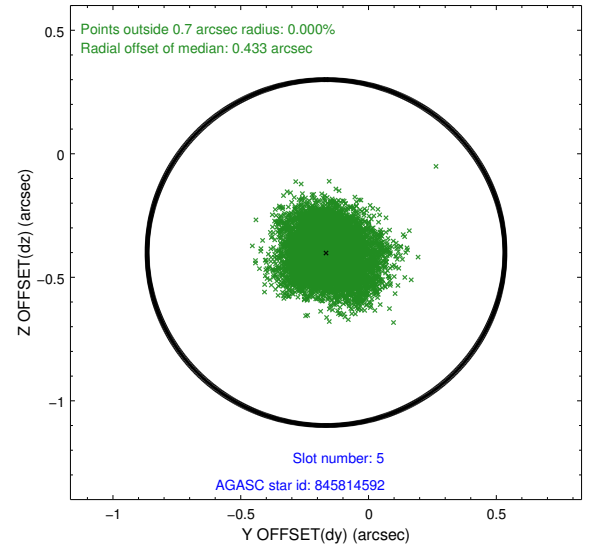
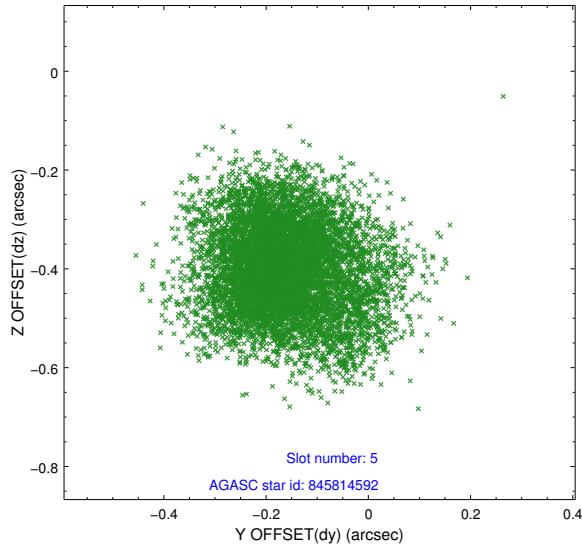
2.4.1 Slot 3



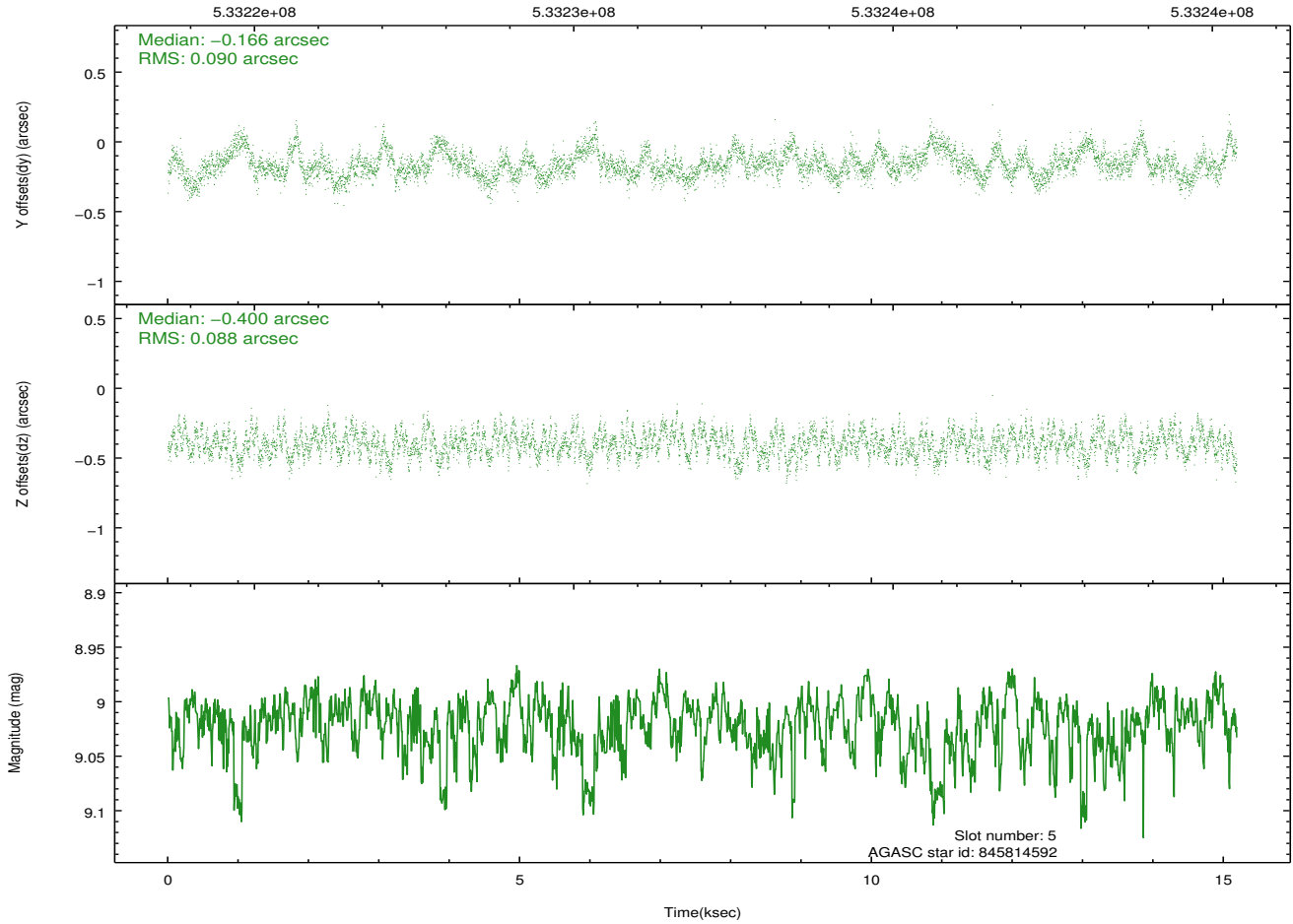
2.4.2 Slot 4



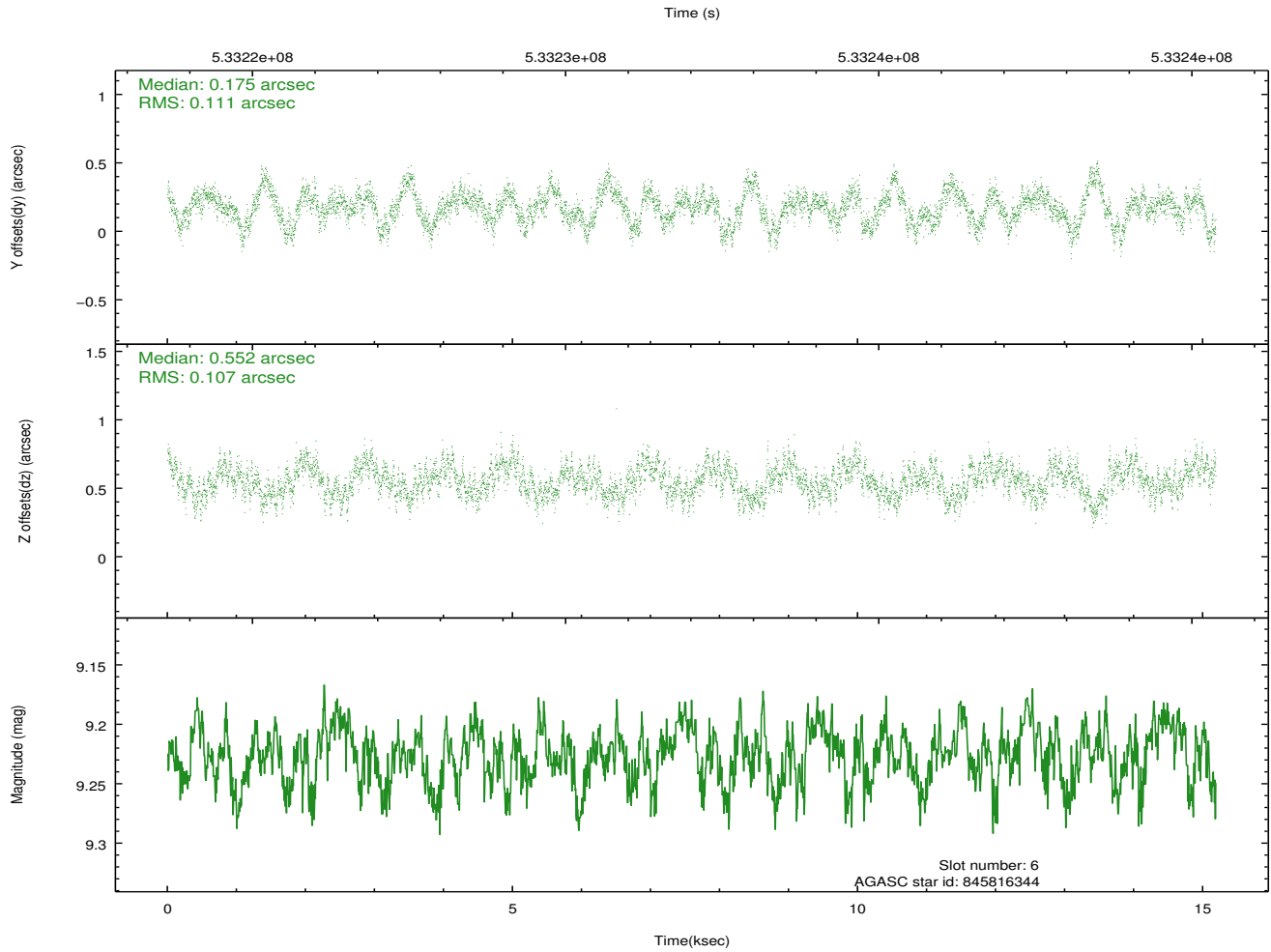
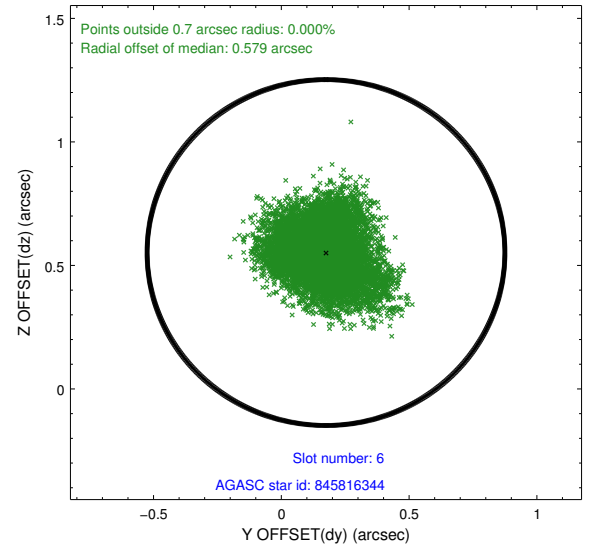
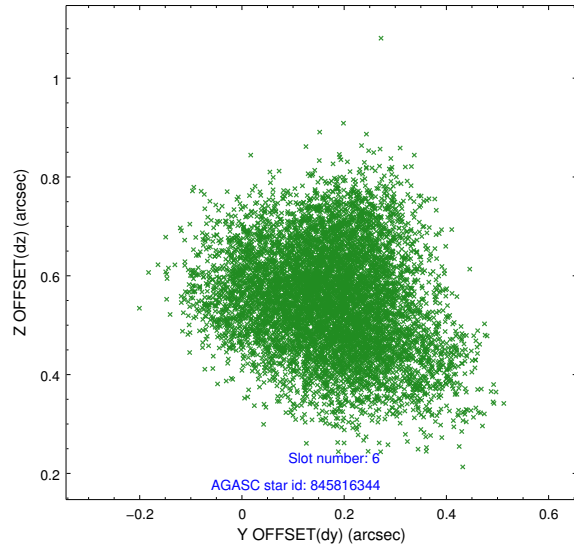
2.4.3 Slot 5



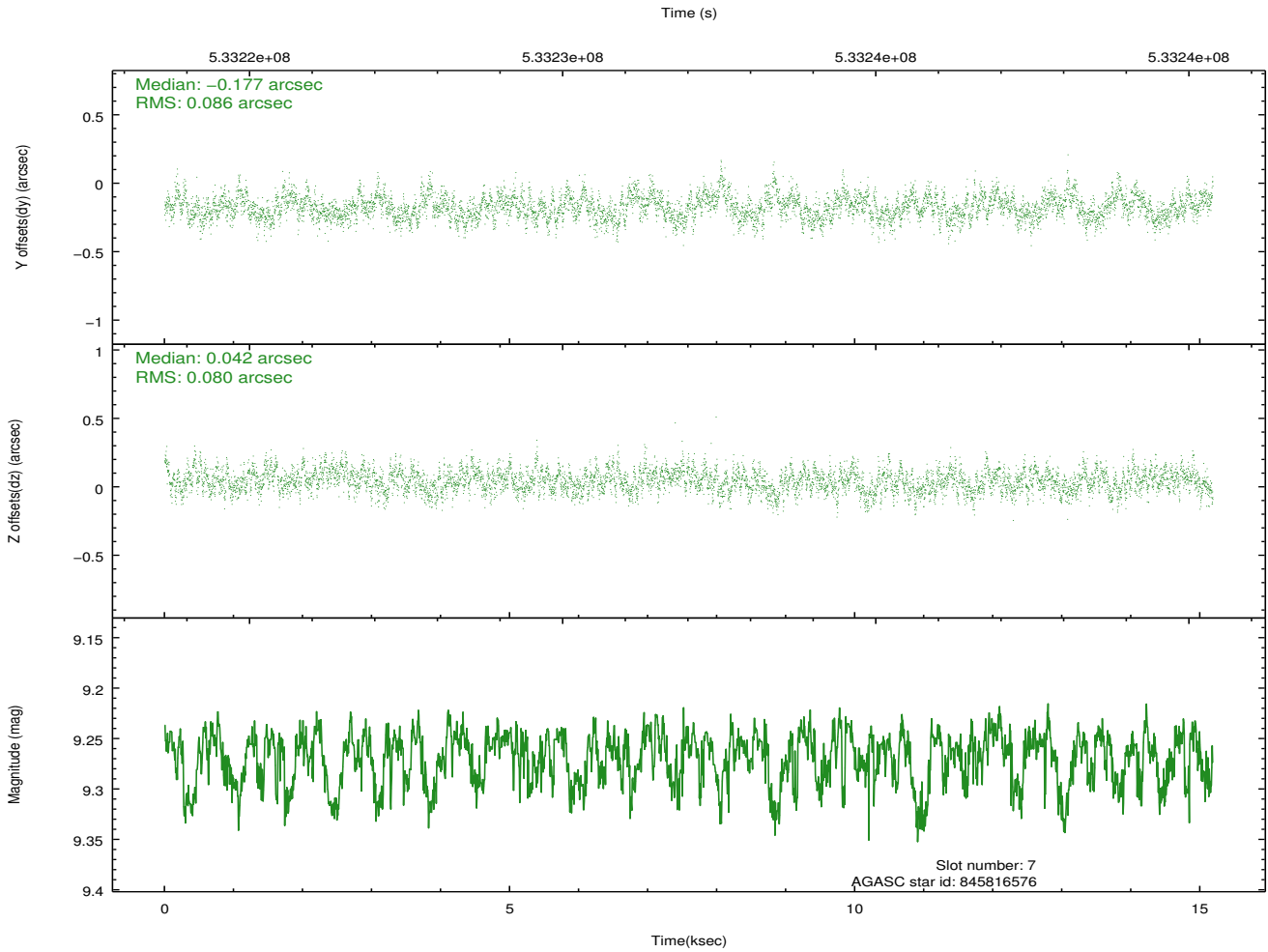
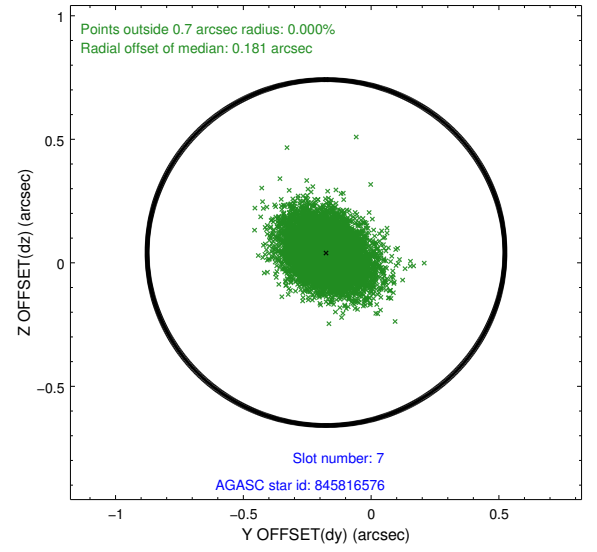
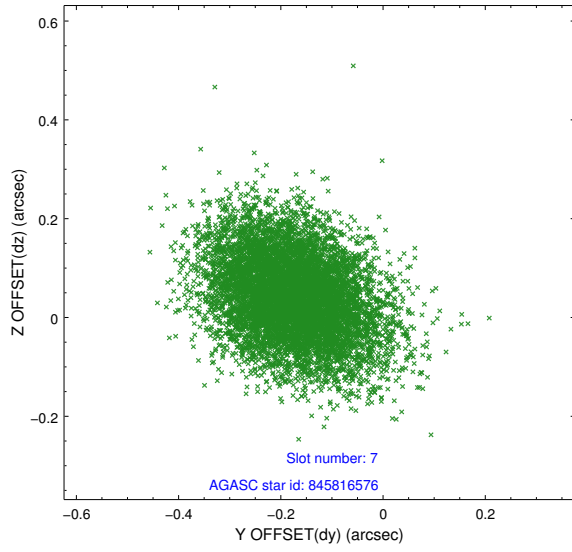
Time (s)



2.4.4 Slot 6

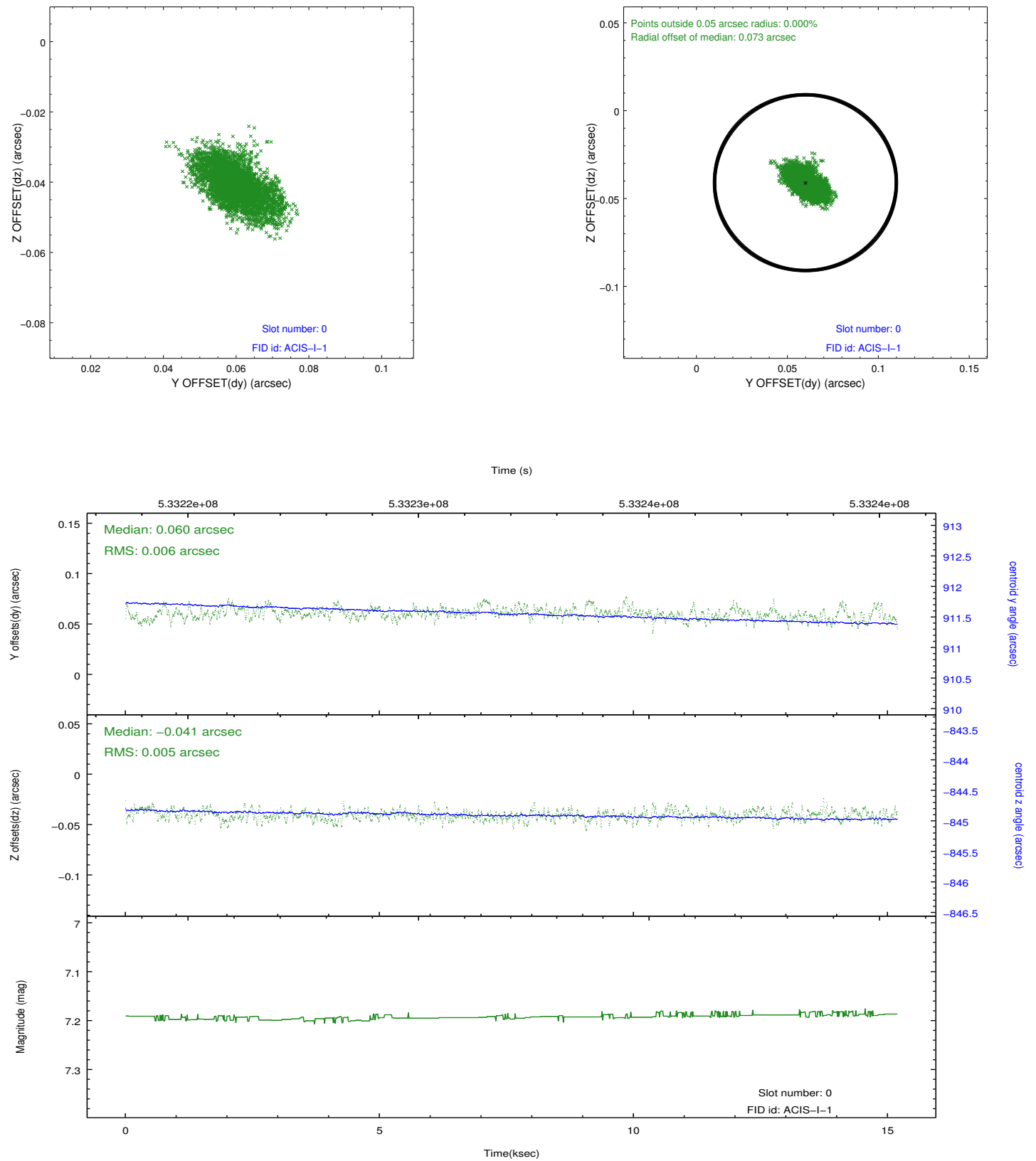


2.4.5 Slot 7

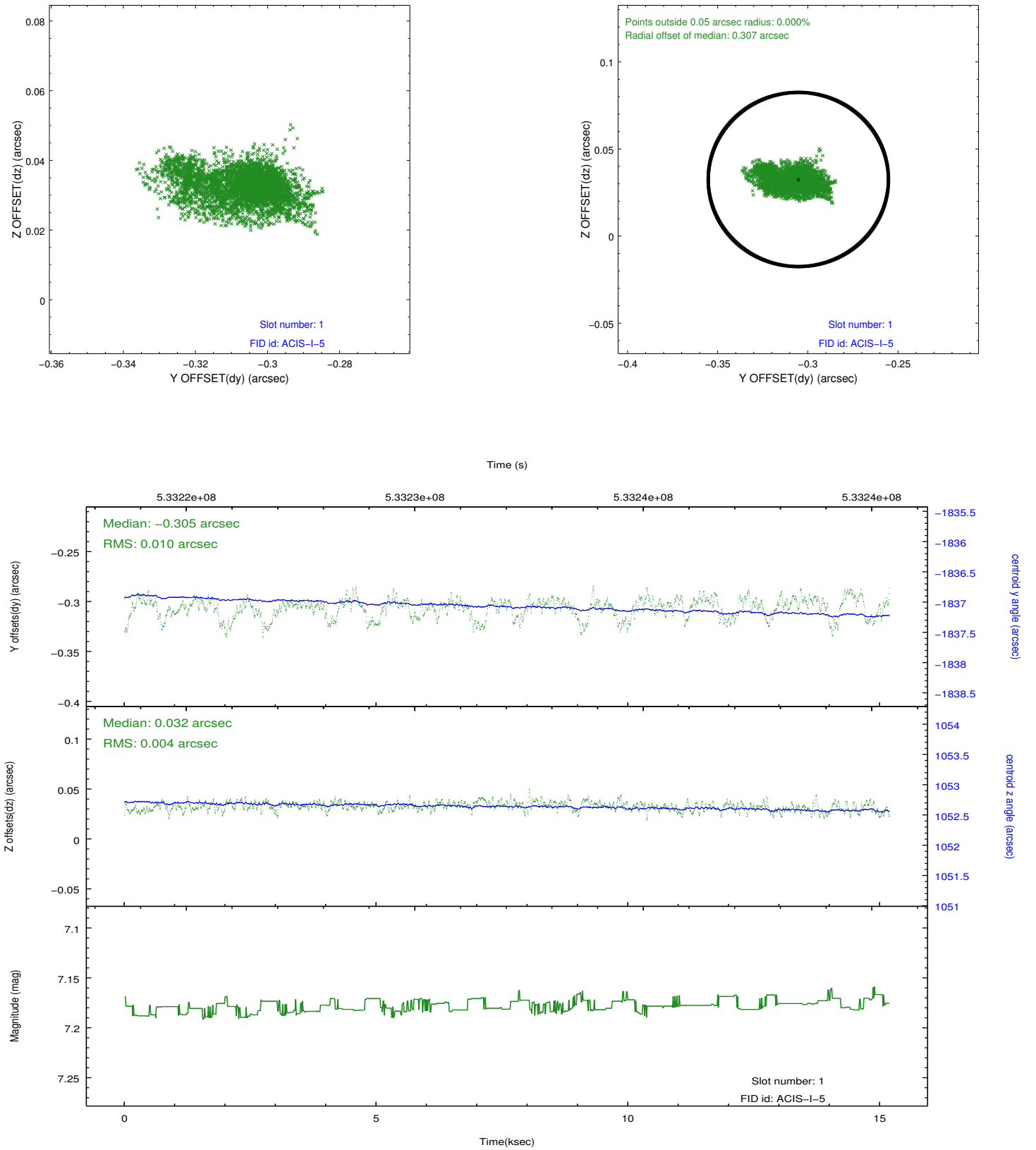


2.5 FID Slots

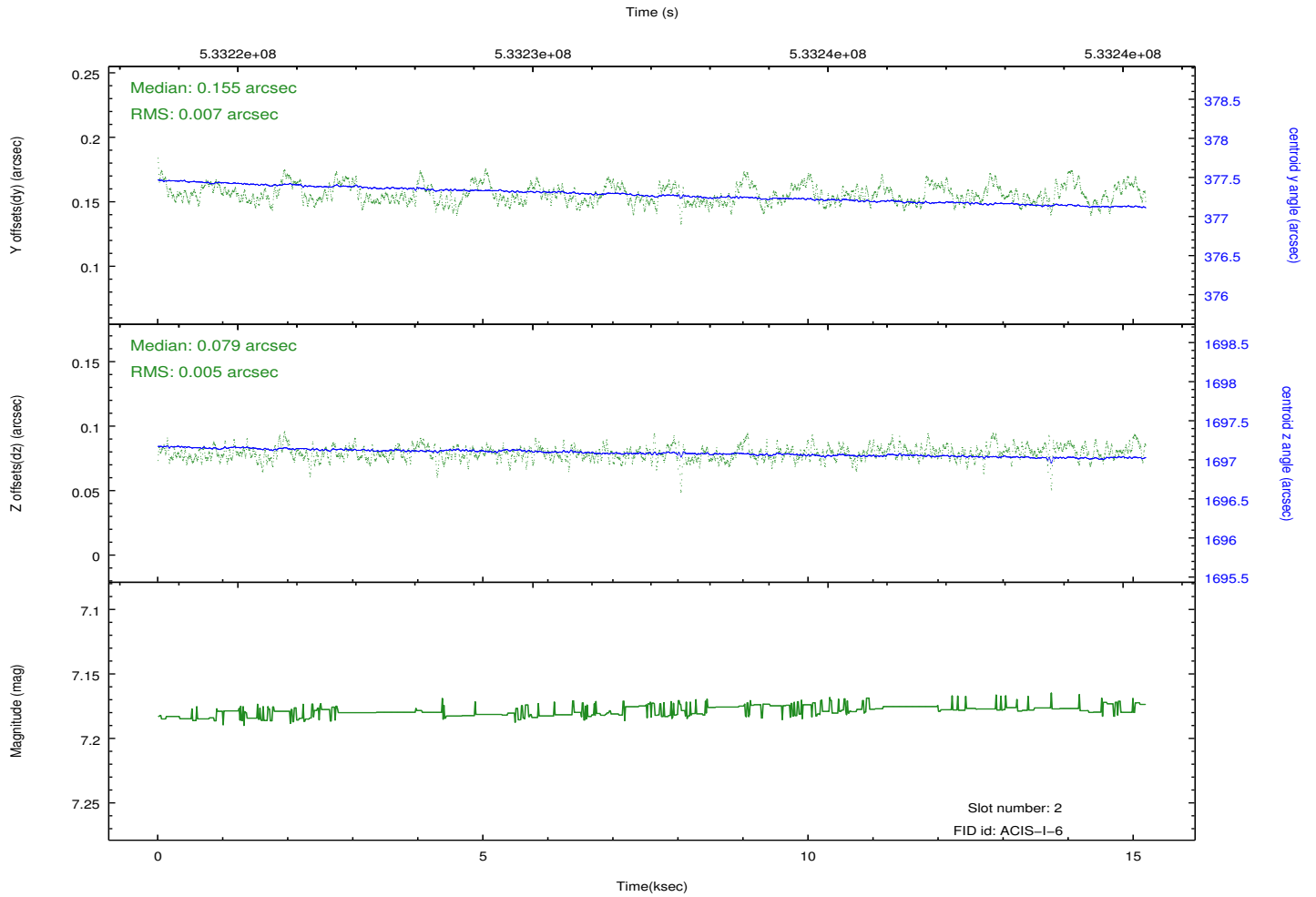
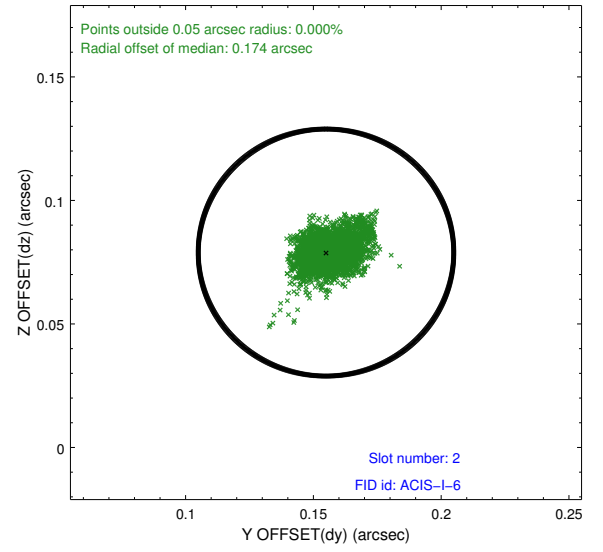
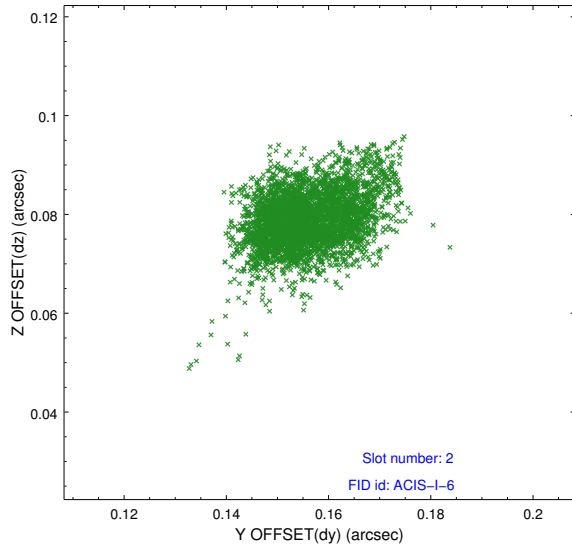
2.5.1 Slot 0



2.5.2 Slot 1



2.5.3 Slot 2



A Summary

A.1 Status

V&V Scientist	Jen Lauer
V&V Date (YYYY-MM-DD)	2014.11.25
V&V Edition	1
V&V Disposition and Status	OK
V&V Charge Time	14.791791220248

A.2 Comments

Roll preference met.