

# V&V Reference Report

## L2 ASCDS Version : 10.3.3

Observation 16312 - L2 Version 1  
Chandra X-Ray Center

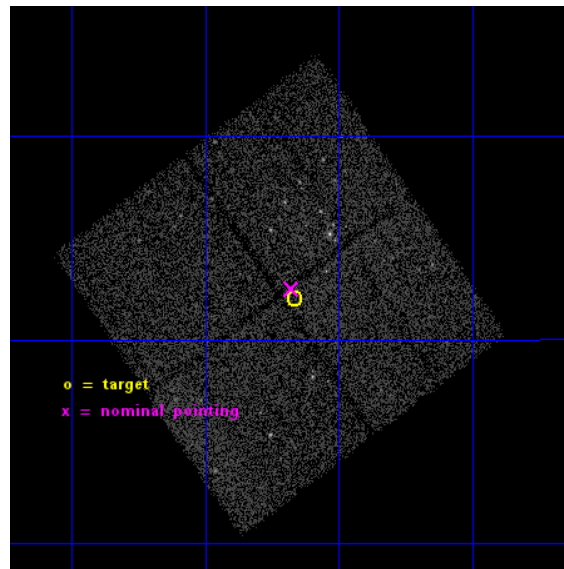
L2 Processing Date : Feb 19 2015

## Contents

<b>1</b>	<b>Front</b>	<b>2</b>
<b>2</b>	<b>OBI</b>	<b>3</b>
2.1	OBI . . . . .	3
2.1.1	Images . . . . .	3
2.1.2	Bias . . . . .	3
2.1.3	Parameters . . . . .	4
2.1.4	Events . . . . .	4
2.2	Compared Parameters . . . . .	5
2.3	Aspect . . . . .	6
2.4	Star Slots . . . . .	9
2.4.1	Slot 3 . . . . .	9
2.4.2	Slot 4 . . . . .	10
2.4.3	Slot 5 . . . . .	11
2.4.4	Slot 6 . . . . .	12
2.4.5	Slot 7 . . . . .	13
2.5	FID Slots . . . . .	14
2.5.1	Slot 0 . . . . .	14
2.5.2	Slot 1 . . . . .	15
2.5.3	Slot 2 . . . . .	16
<b>A</b>	<b>Summary</b>	<b>17</b>
A.1	Status . . . . .	17
A.2	Comments . . . . .	17

# 1 Front

seq_num	502254	Sequence number
obs_id	16312	Observation id
title	Identi cation of X-ray selected Supernova Remnant Candidate G55.6+2.0	Proposal title
observer	Dr. Peter Predehl	Principal investigator
object	G55.6+2.0	Source name
dtcycle	0	&#160
cycle	P	events from which exps? Prim/Second/Both
ra_targ	291.791667	Observer's specified target RA [deg]
dec_targ	21.033889	Observer's specified target Dec [deg]
ra_nom	291.79437910822	Nominal RA [deg]
dec_nom	21.041671959633	Nominal Dec [deg]
roll_nom	54.504088262952	Nominal Roll [deg]
revision	1	Processing version of data
ontime	25078.991961598	Sum of GTIs [s]
livetime	24751.316468735	Livetime [s]
ontime0	25078.868841648	Sum of GTIs [s]
ontime1	25075.768831372	Sum of GTIs [s]
ontime2	25078.950921655	Sum of GTIs [s]
ontime3	25078.991961598	Sum of GTIs [s]
l2events	54457	Number of level 2 events

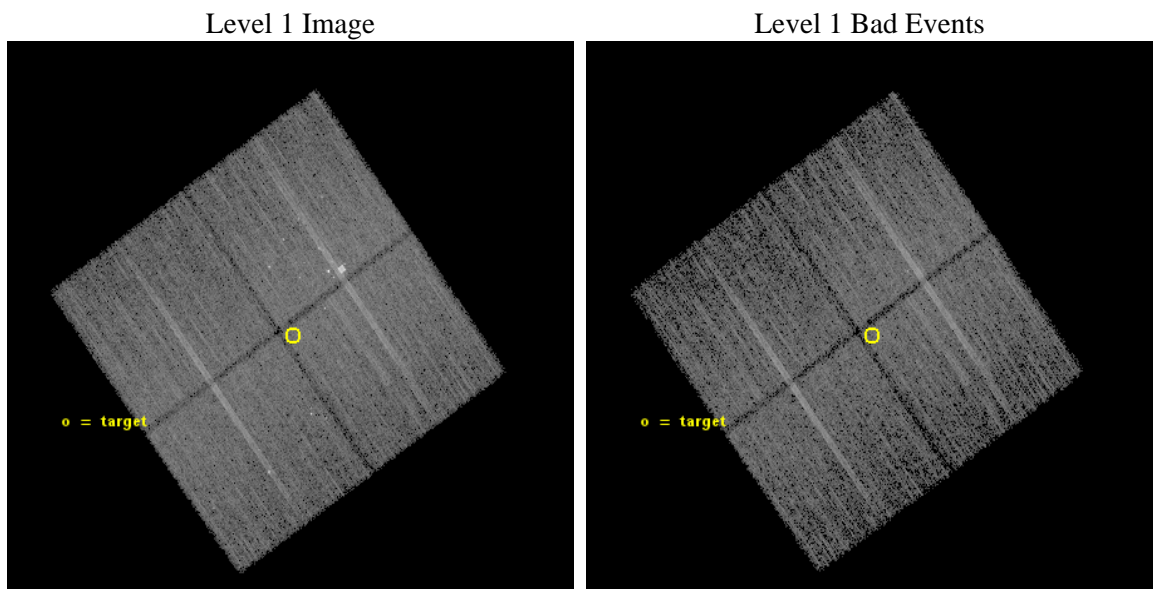




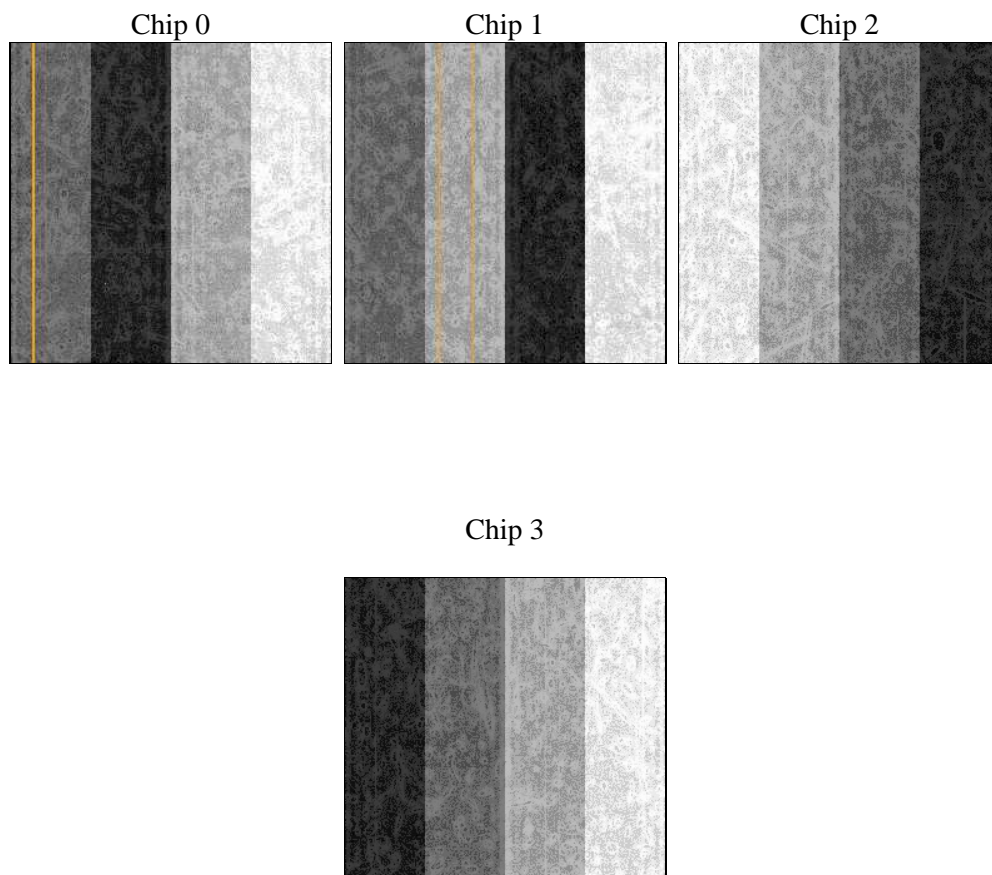
## 2 OBI

### 2.1 OBI

#### 2.1.1 Images



#### 2.1.2 Bias



### 2.1.3 Parameters

obi_num	2	Obi number	sched_exp_time	25000.000000	[s] Scheduled observation exposure time
ascdsver	10.3.3	Processing system revision	ontime	25078.991961598	Sum of GTIs [s]
caldsver	4.6.6	&#160	ontime0	25078.868841648	Sum of GTIs [s]
date	2015-02-19T18:19:33	Date and time of file creation	ontime1	25075.768831372	Sum of GTIs [s]
revision	1	Processing version of data	ontime2	25078.950921655	Sum of GTIs [s]
			ontime3	25078.991961598	Sum of GTIs [s]
			l1events	485284	Number of level 1 events

### 2.1.4 Events

	ccd 0	ccd 1	ccd 2	ccd 3
level 1 events	111013	115656	136051	122564
rejected events	96638	98684	113568	107828
rejected %	87%	85%	83%	87%

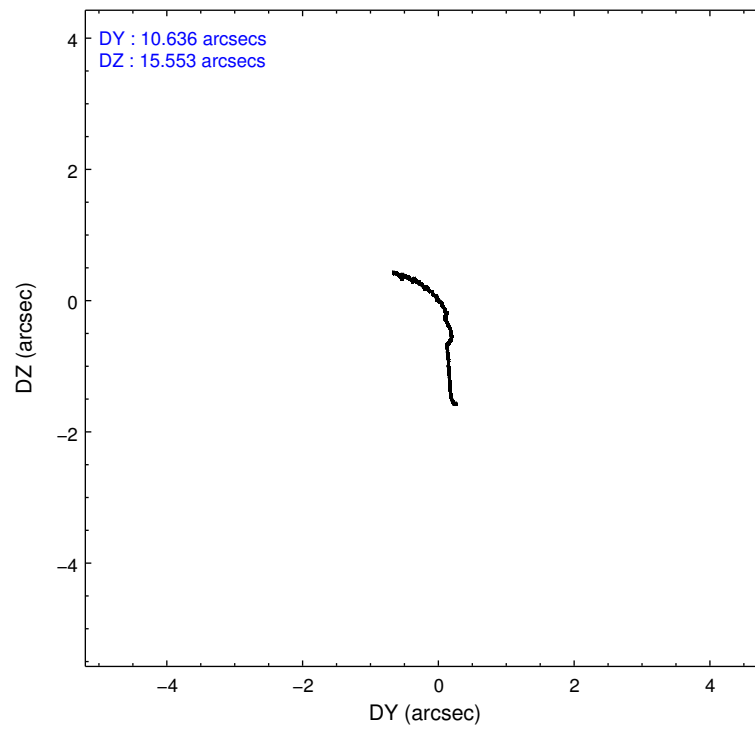
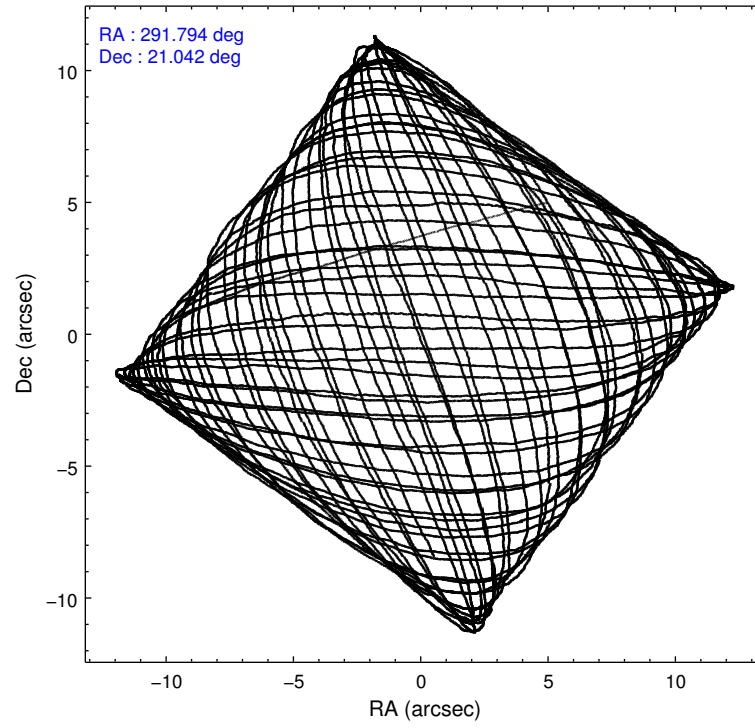
	ccd 0	ccd 1	ccd 2	ccd 3
grade 0 events	5052	6366	13026	5776
	4%	5%	9%	4%
grade 1 events	58	45	132	71
	0%	0%	0%	0%
grade 2 events	3473	4009	3686	3036
	3%	3%	2%	2%
grade 3 events	1462	1518	1560	1490
	1%	1%	1%	1%
grade 4 events	1451	1534	1502	1549
	1%	1%	1%	1%
grade 5 events	5341	5674	5067	6170
	4%	4%	3%	5%
grade 6 events	2939	3551	2713	2890
	2%	3%	1%	2%
grade 7 events	91237	92959	108365	101582
	82%	80%	79%	82%

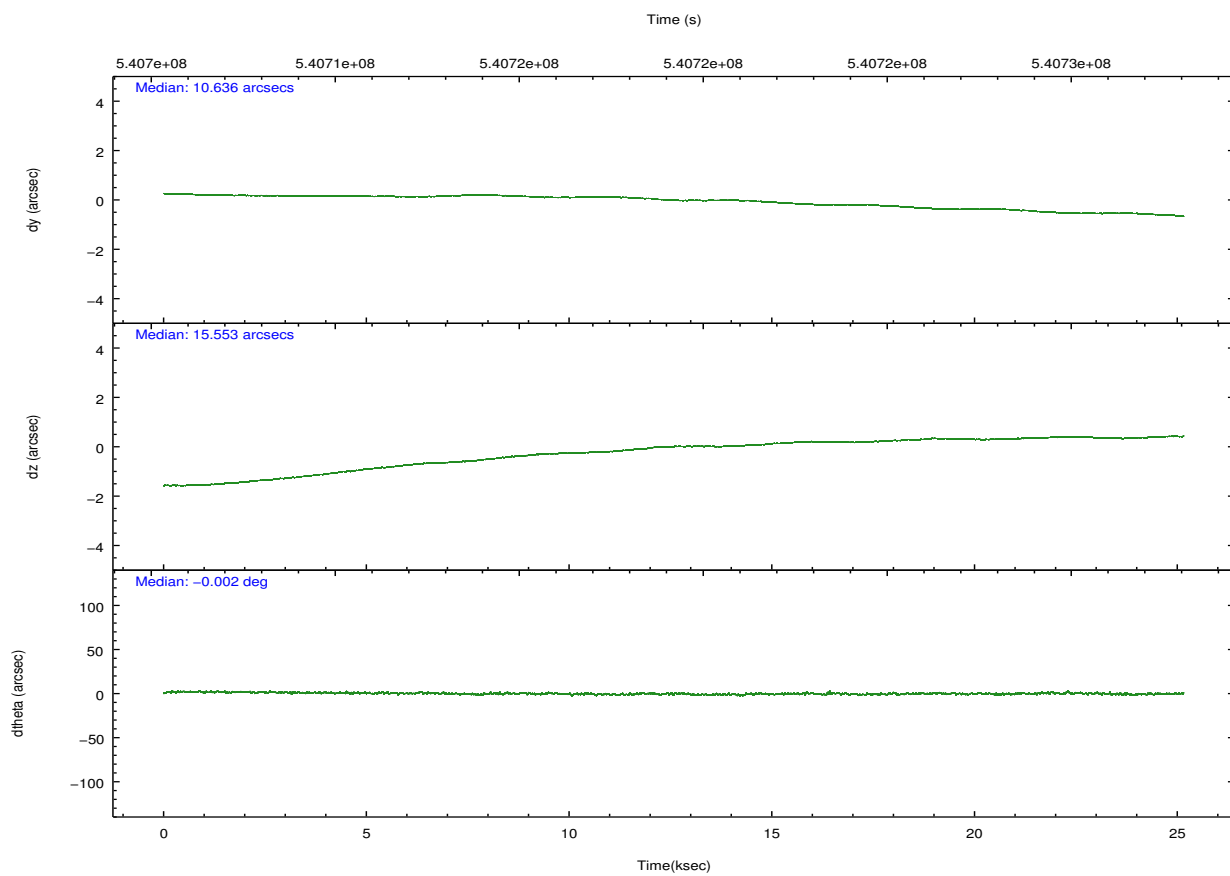
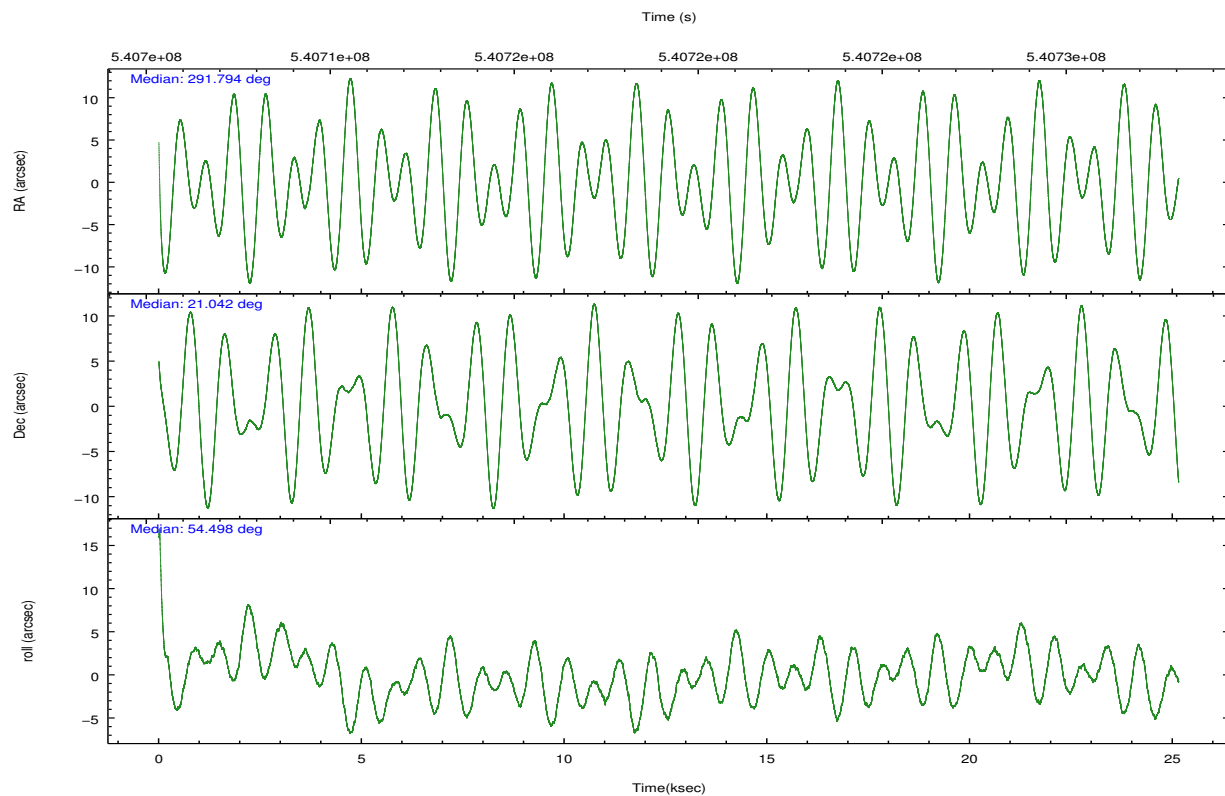
## 2.2 Compared Parameters

Parameter	Planned	Actual
Instrument	ACIS	ACIS
Detector	ACIS-0123	ACIS-0123
Grating	NONE	NONE
Data mode	VFAINT	VFAINT
Observation mode	POINTING	POINTING
[deg] Pointing RA	291.791667	291.7943791082172
[deg] Pointing Dec	21.014191	21.04167195963257
[deg] Pointing Roll	54.296369	54.50408826295168
[mm] SIM focus pos	-0.782348	-0.7809083437167272
[mm] SIM defocus	0	0.001439871863259334
[mm] SIM translation stage pos	-233.592463	-233.5874344608287
[mm] SIM translation stage offset	0	-0.005018542100998502
[s] Observation start time (MET)	540706783.184000	540705677.18918
Observation start date	2015-02-19T04:18:36	2015-02-19T04:01:17
[s] Observation end time (MET)	540731783.184000	540733072.8782099
Observation end date	2015-02-19T11:15:16	2015-02-19T11:37:52
Read mode	TIMED	TIMED

Parameter	Planned	Actual
Obspar format version number	7	7
Obspar file type	PREDICTED	ACTUAL
Obspar update status	NONE	UPDATED
Number of optional ACIS chips dropped	0	0
On-chip summing requested	N	N
Subarray requested	NONE	NONE
Alternating exposures requested	N	N
[s] Primary exposure time	0.000000	3.1

## 2.3 Aspect



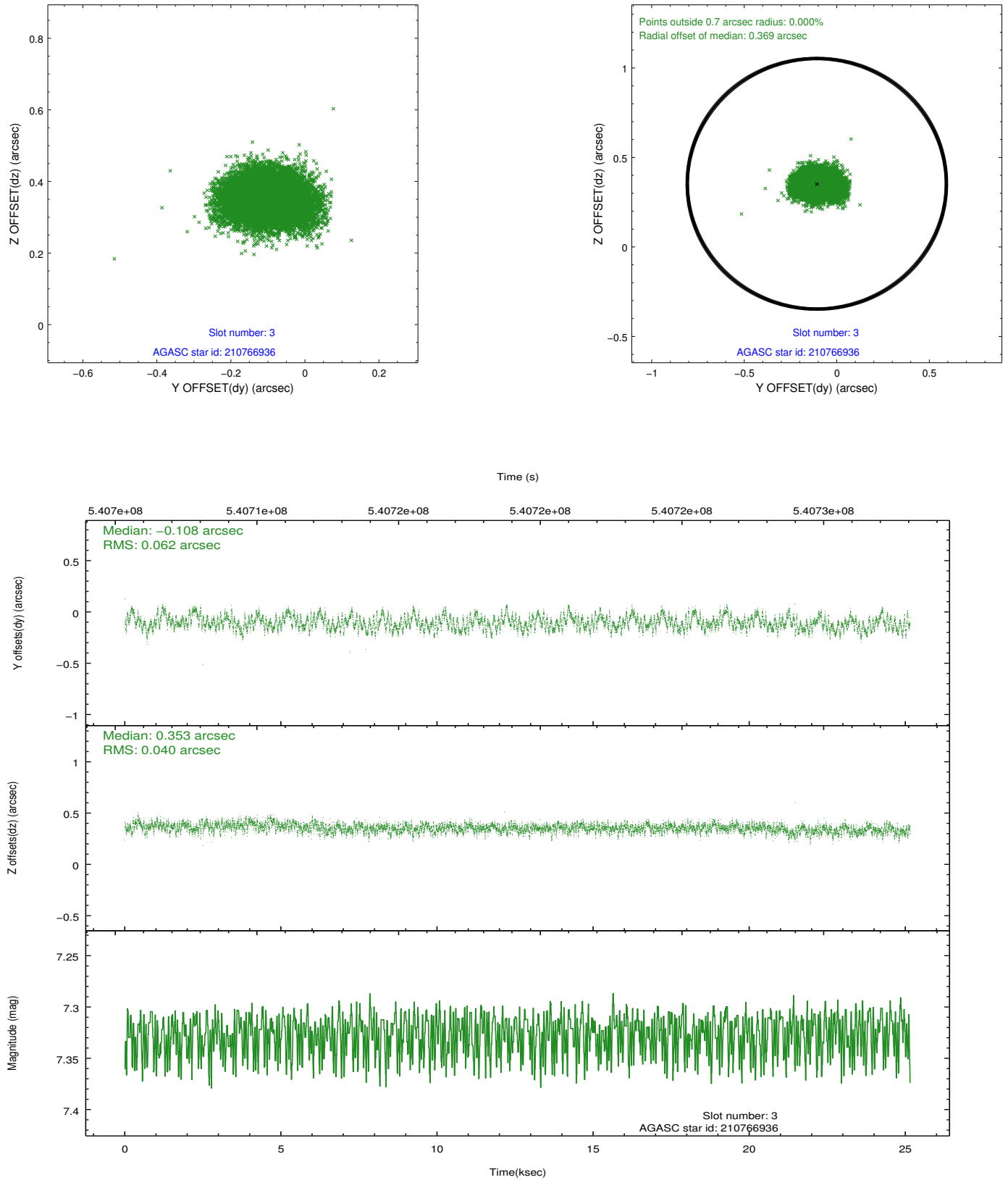


### Slot Statistics

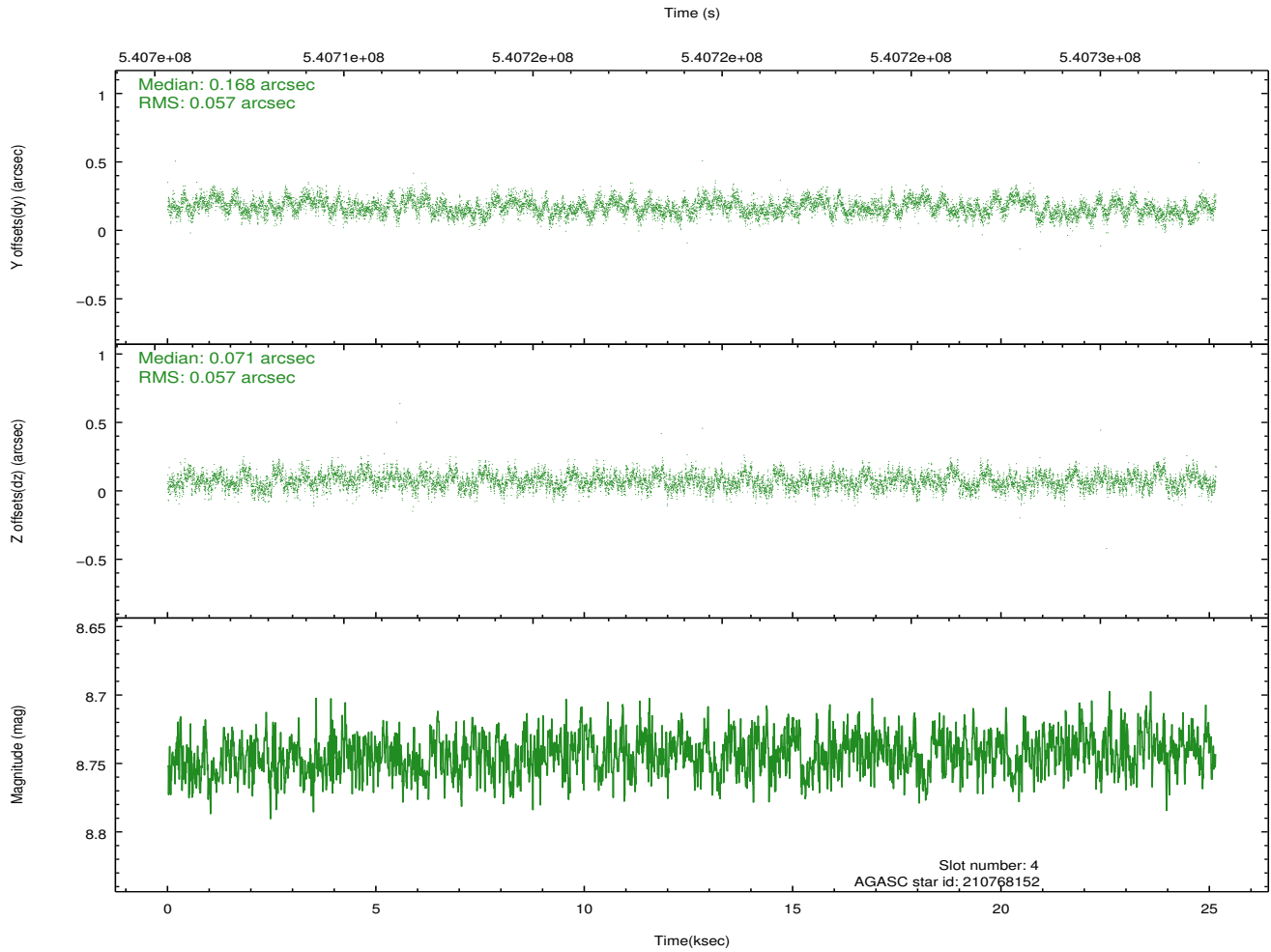
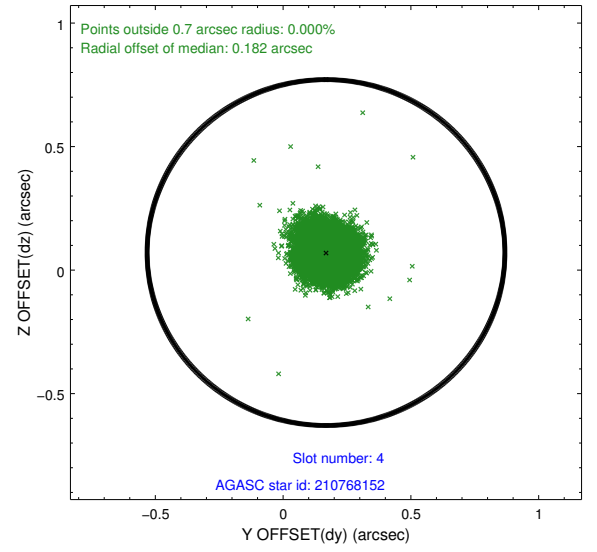
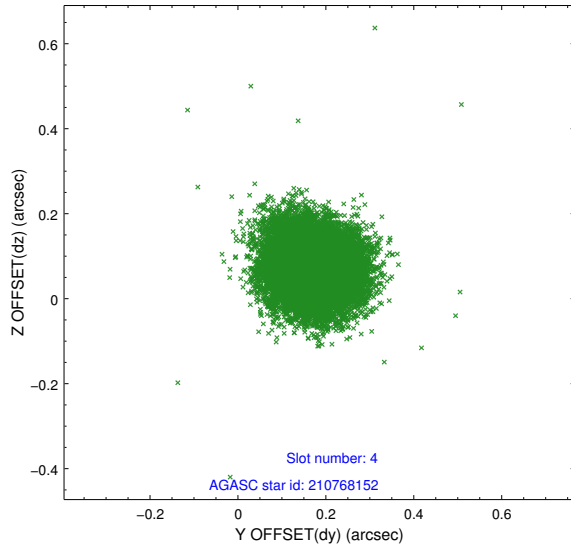
slot	status	used	id	mag	n_pts	med_dy	med_dz	dr1	dr2	ra	dec	mean_y	mean_z
0	FID		ACIS-I-2	7.14	6134	-0.120	-0.120	0.015	0.027	0.000000	0.000000	-765.28	-845.37
1	FID		ACIS-I-4	7.18	6134	0.238	0.101	0.011	0.020	0.000000	0.000000	2149.11	1060.93
2	FID		ACIS-I-5	7.24	6135	-0.220	0.088	0.016	0.025	0.000000	0.000000	-1819.03	1058.94
3	GUIDE	used	210766936	7.33	12268	-0.108	0.353	0.079	0.128	291.975269	20.247382	-1879.11	-2114.17
4	GUIDE	used	210768152	8.74	12262	0.168	0.071	0.087	0.135	291.407219	20.540850	-2138.55	58.69
5	GUIDE	used	211303512	7.45	12270	-0.199	-0.289	0.088	0.151	291.745301	21.106373	178.51	320.01
6	GUIDE	used	211297040	7.78	12268	-0.225	-0.319	0.088	0.144	291.686117	21.653116	1661.73	1629.27
7	GUIDE	used	211419464	9.17	12261	0.362	0.181	0.159	0.268	292.716762	21.195051	2349.23	-2135.58

## 2.4 Star Slots

### 2.4.1 Slot 3

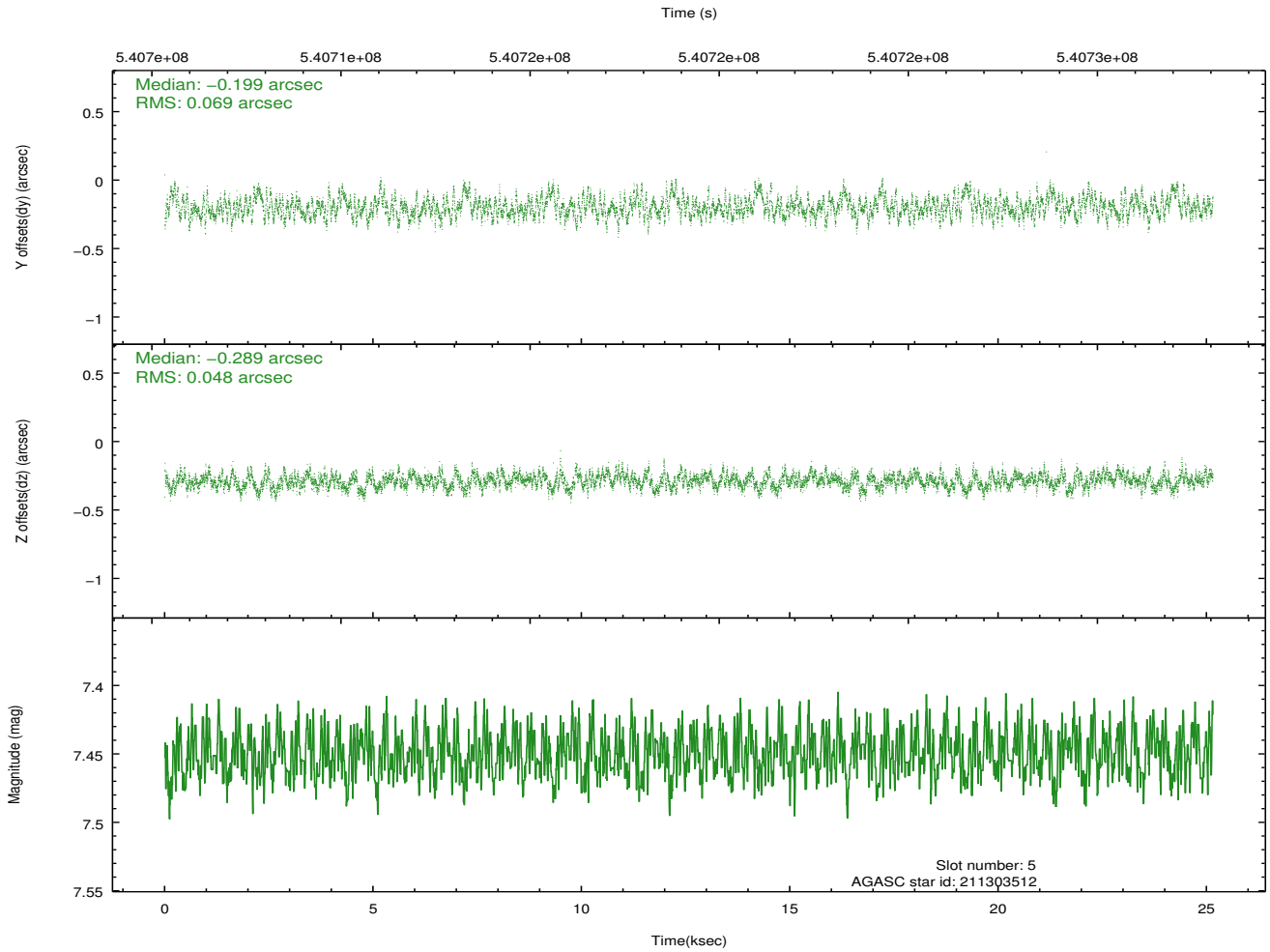
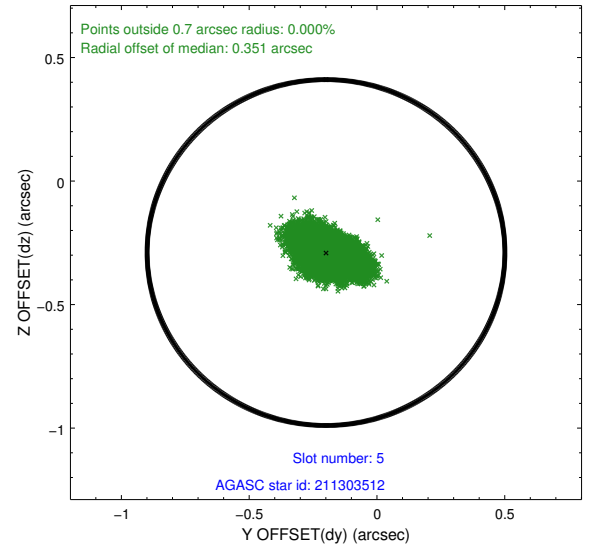
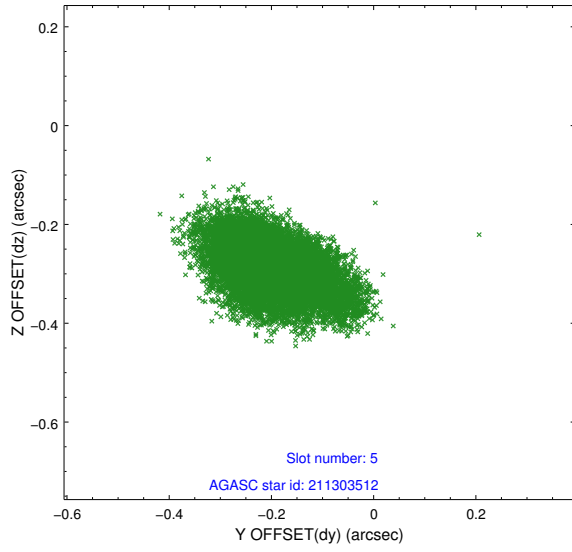


## 2.4.2 Slot 4

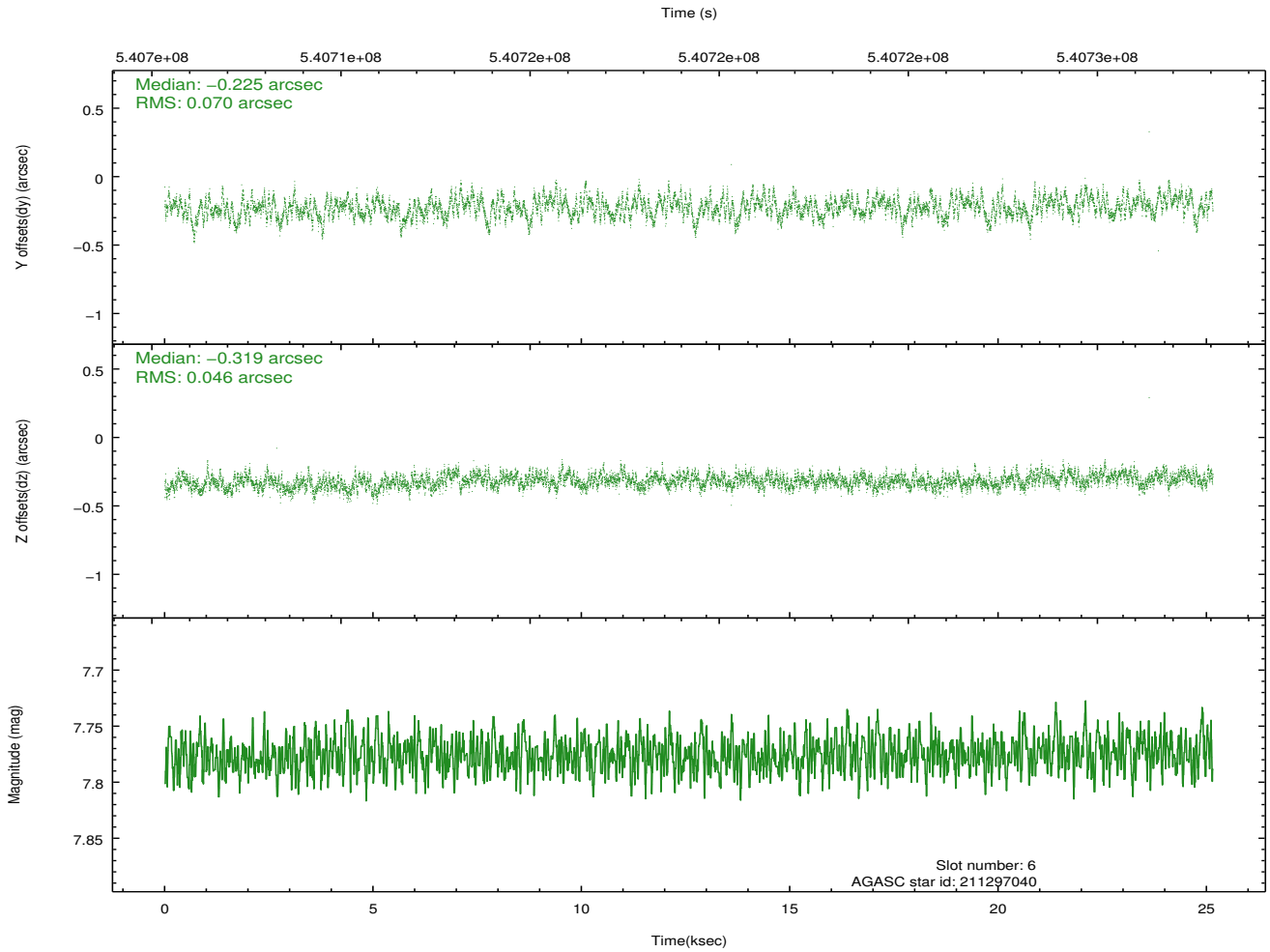
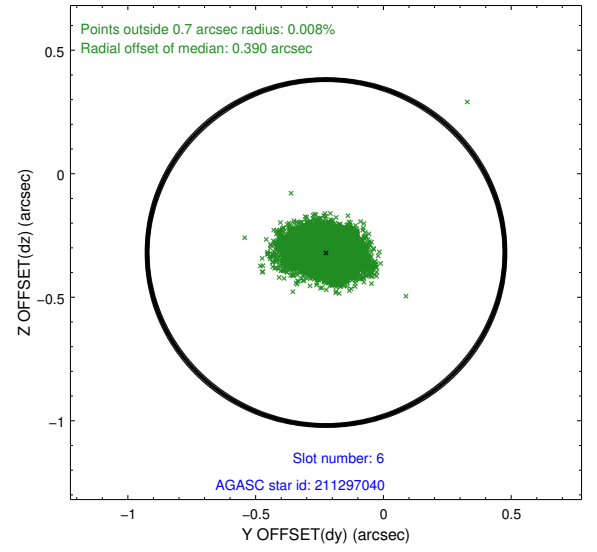
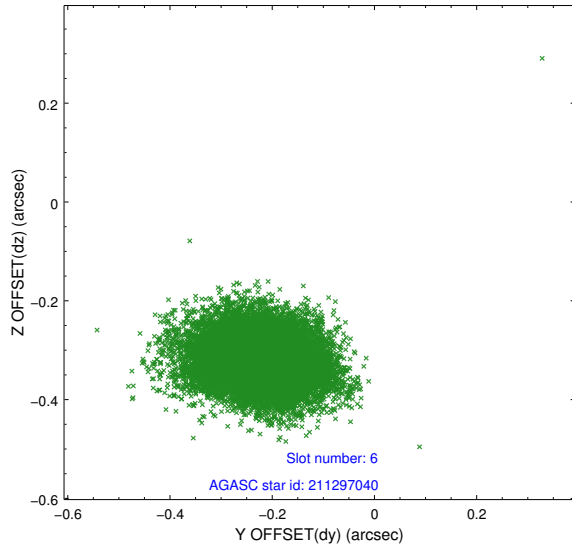




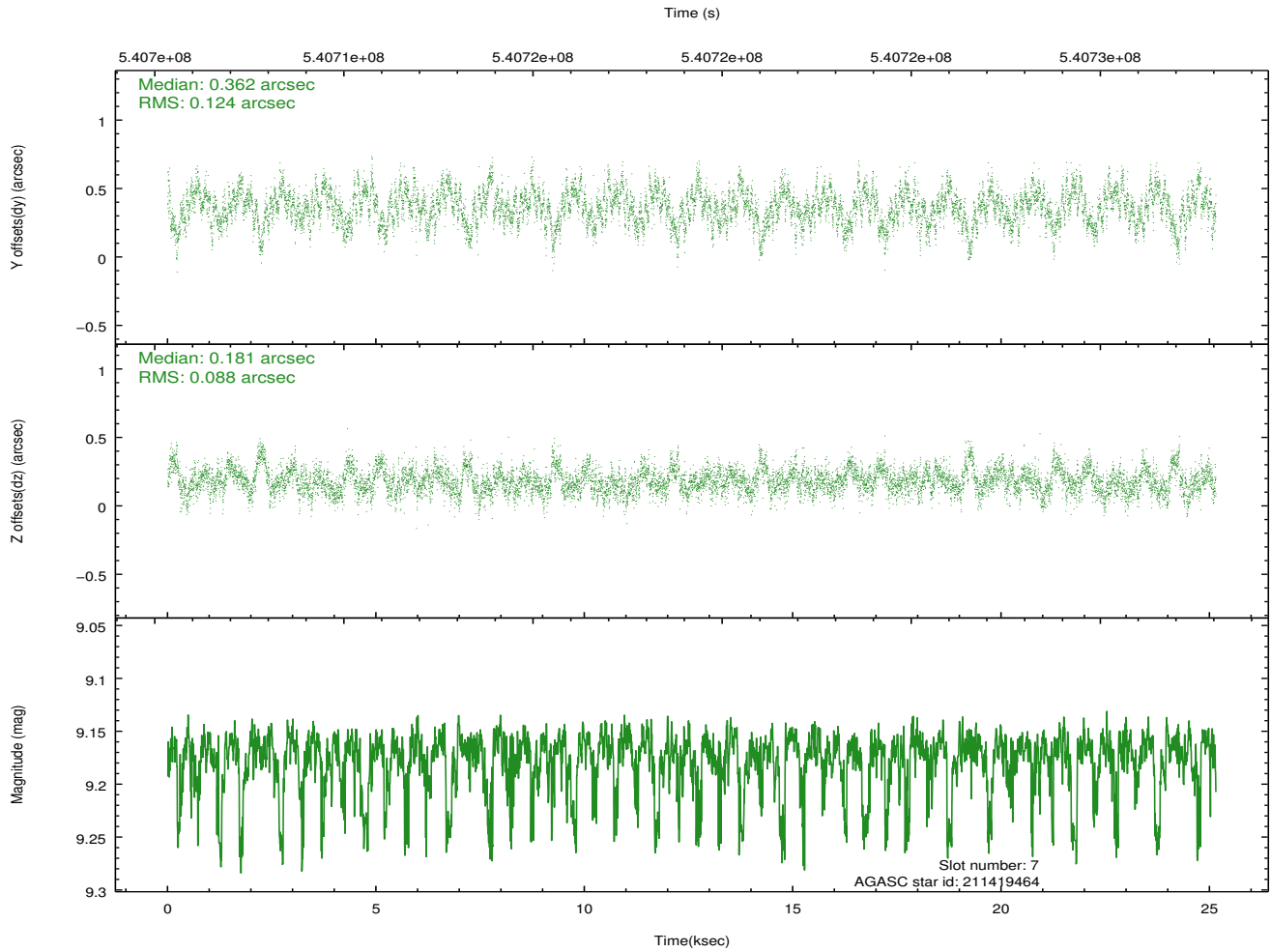
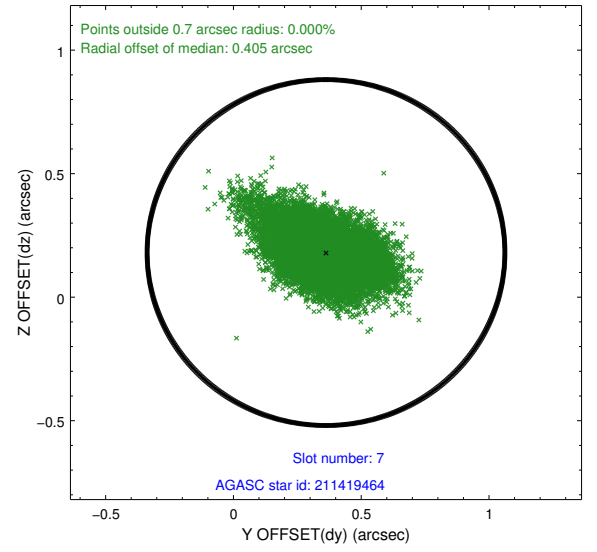
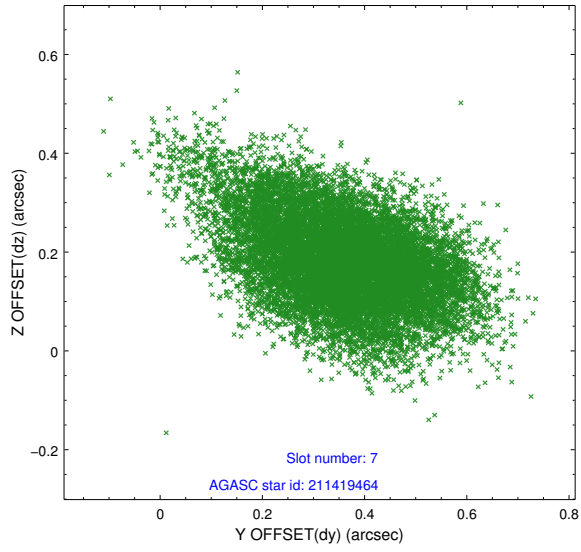
### 2.4.3 Slot 5



## 2.4.4 Slot 6

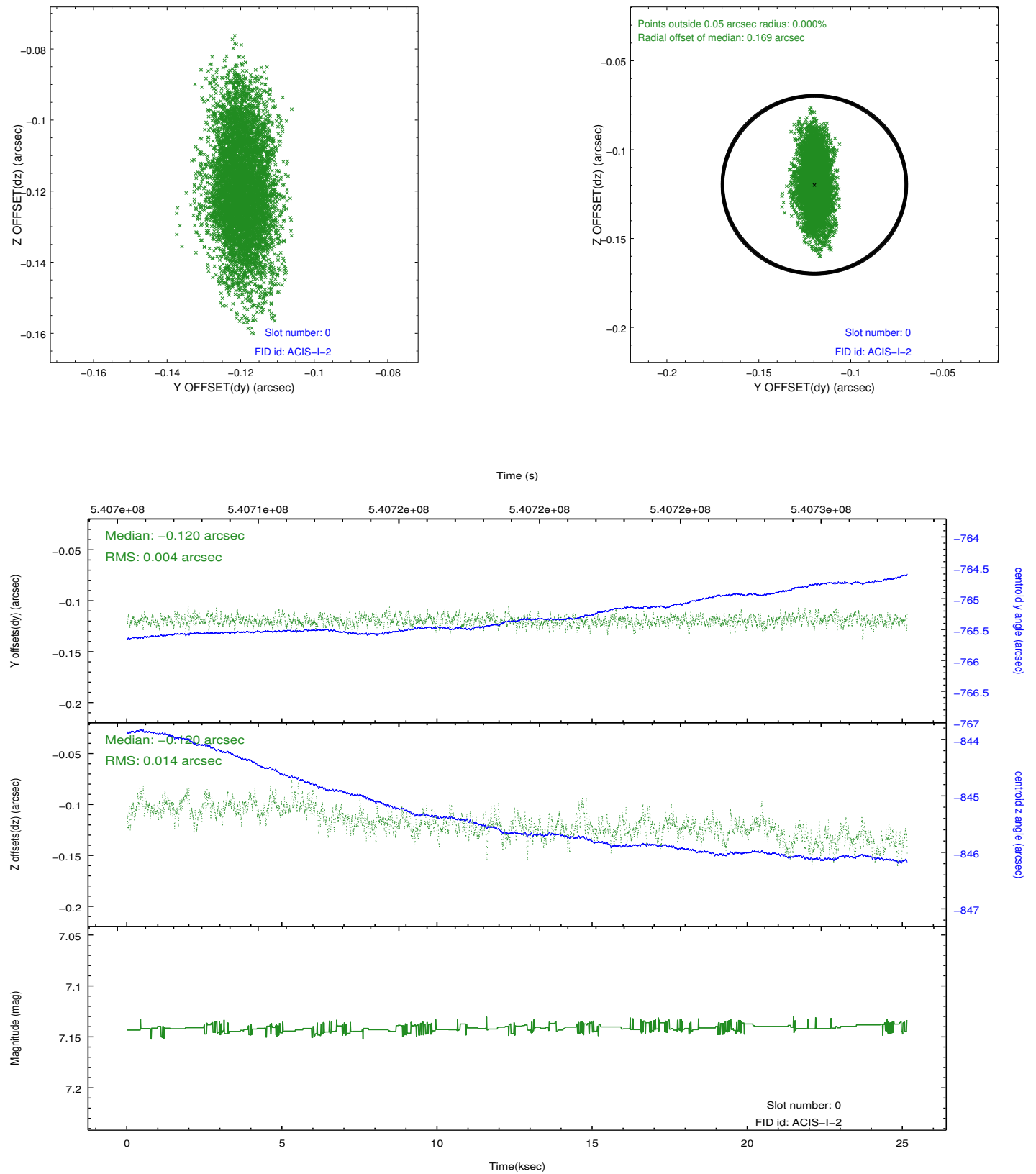


## 2.4.5 Slot 7

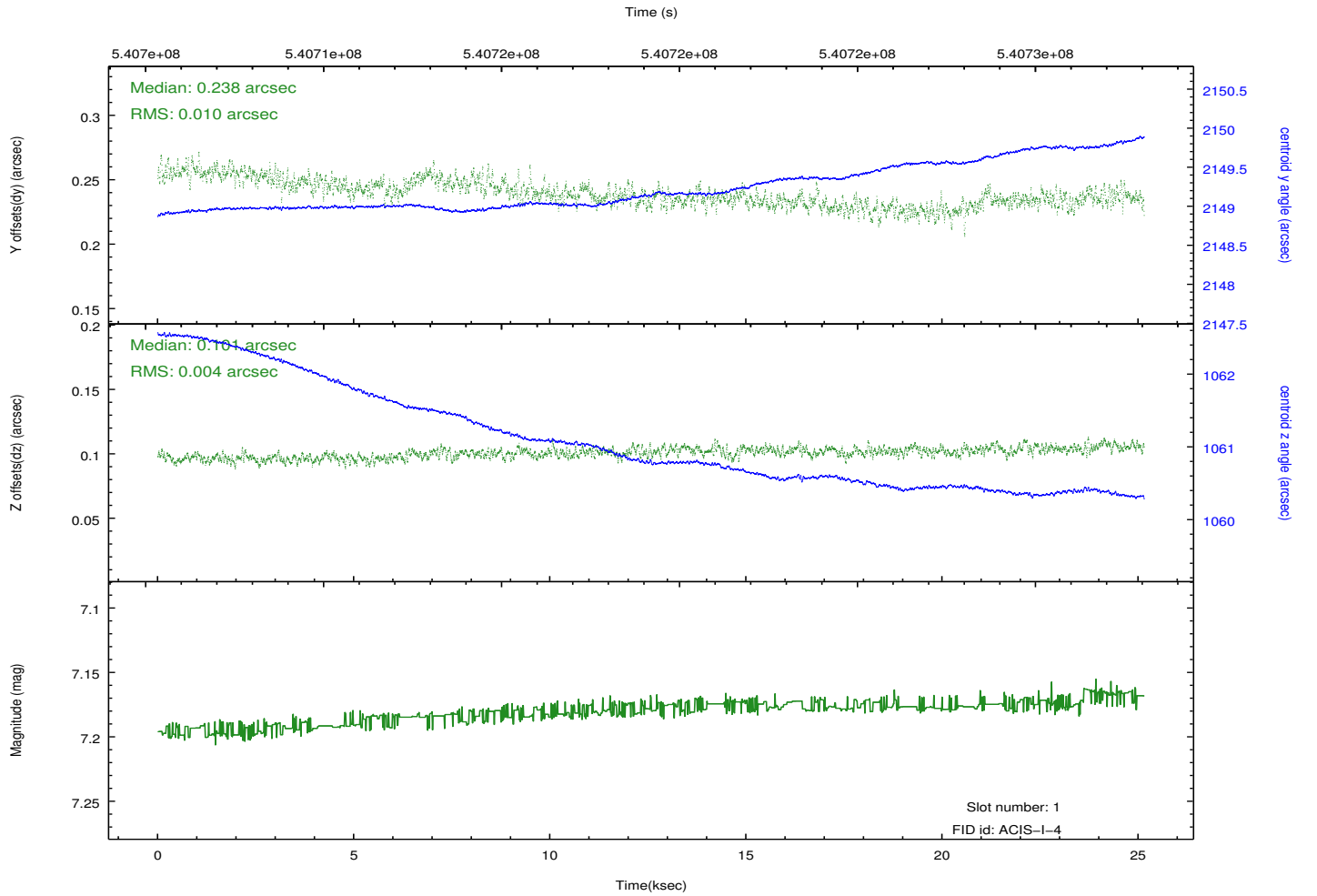
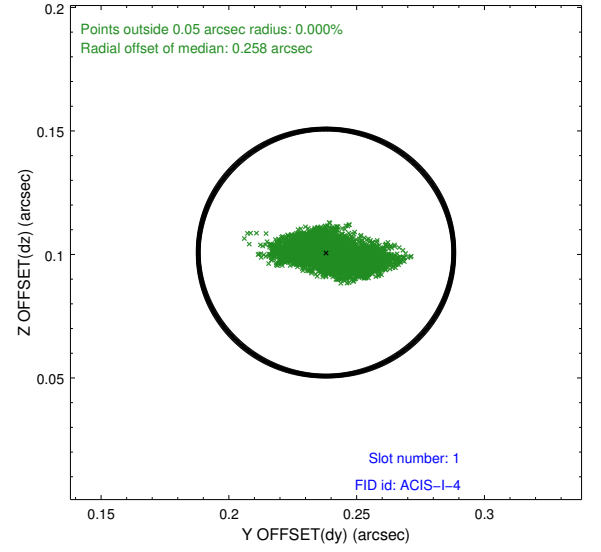
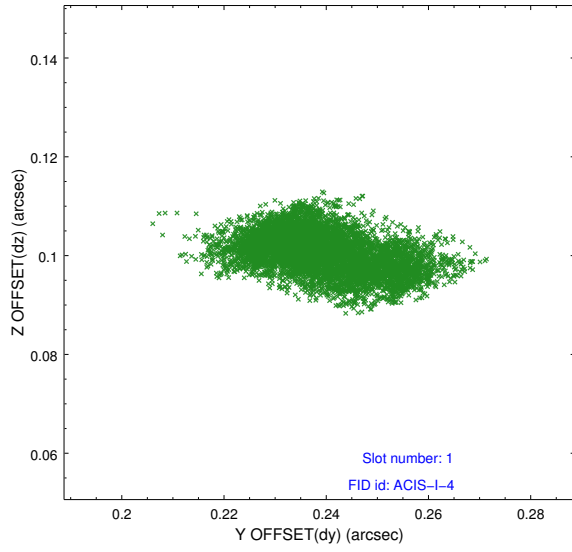


## 2.5 FID Slots

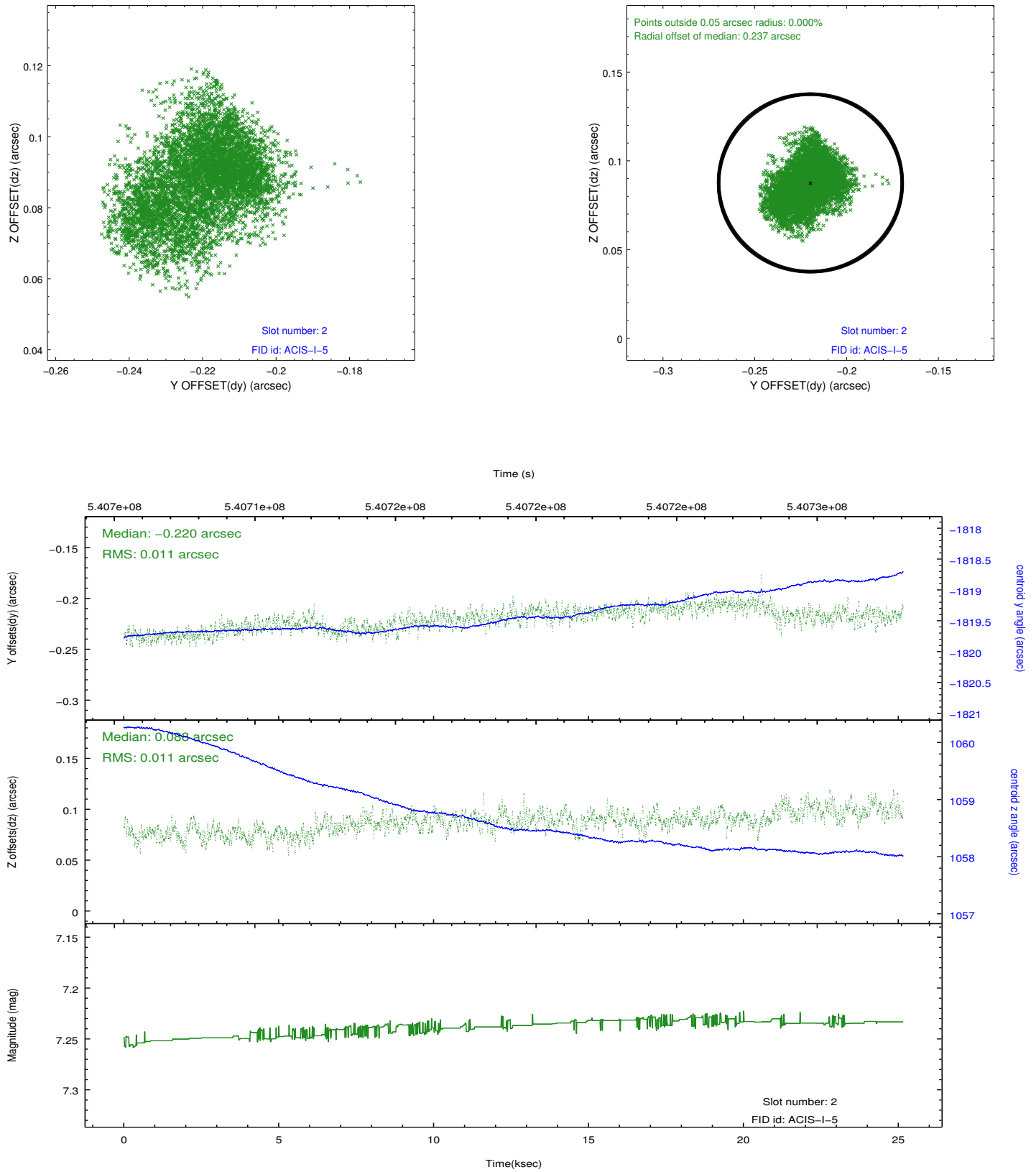
### 2.5.1 Slot 0



## 2.5.2 Slot 1



### 2.5.3 Slot 2



## A Summary

### A.1 Status

V&V Scientist	Beth Sundheim
V&V Date (YYYY-MM-DD)	2015.02.19
V&V Edition	1
V&V Disposition and Status	OK
V&V Charge Time	25.078991961598

### A.2 Comments