

V&V Reference Report

L2 ASCDS Version : 8.4.5

Observation 1542 - L2 Version 3
Chandra X-Ray Center

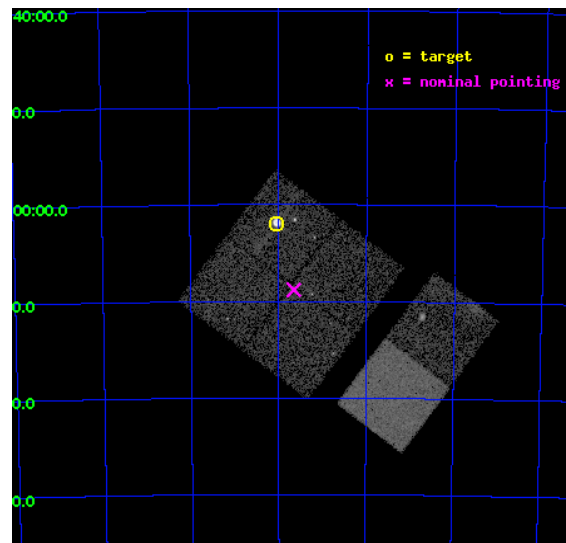
L2 Processing Date : Sep 17 2012

Contents

1	Front	2
2	OBI	3
2.1	OBI	3
2.1.1	Images	3
2.1.2	Bias	3
2.1.3	Parameters	4
2.1.4	Events	4
2.2	Compared Parameters	5
2.3	Aspect	6
2.4	Star Slots	9
2.4.1	Slot 3	9
2.4.2	Slot 4	10
2.4.3	Slot 5	11
2.4.4	Slot 6	12
2.4.5	Slot 7	13
2.5	FID Slots	14
2.5.1	Slot 0	14
2.5.2	Slot 1	15
2.5.3	Slot 2	16
A	Summary	17
A.1	Status	17
A.2	Comments	17

1 Front

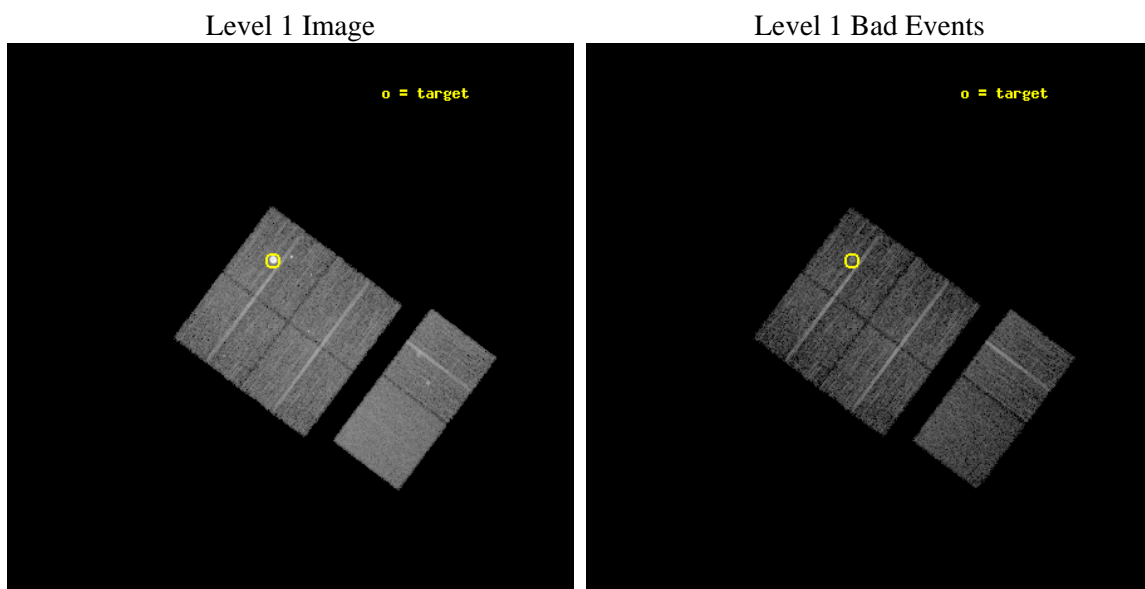
seq_num	590151	Sequence number
obs_id	1542	Observation id
title	ACIS CALIBRATION OBSERVATION OF THE SUPERNOVA REMNANT E0102-72 (JUNE 2001)	Proposal title
observer	Dr. CXC Calibration	Principal investigator
object	E0102-72.3 [Chip I0, T=120, Offsets=4,-5,0]	Source name
dtcycle	0	
cycle	P	events from which exps? Prim/Second/Both
ra_targ	16.01	Observer's specified target RA [deg]
dec_targ	-72.032028	Observer's specified target Dec [deg]
ra_nom	15.912339736771	Nominal RA [deg]
dec_nom	-72.146835495057	Nominal Dec [deg]
roll_nom	126.94432100613	Nominal Roll [deg]
revision	3	Processing version of data
ontime	7513.6000069827	Sum of GTIs [s]
livetime	7418.4582795475	Livetime [s]
ontime0	7513.6000069827	Sum of GTIs [s]
ontime1	7513.6000069827	Sum of GTIs [s]
ontime2	7513.6000069827	Sum of GTIs [s]
ontime3	7513.6000069827	Sum of GTIs [s]
ontime6	7513.6000069827	Sum of GTIs [s]
ontime7	7513.6000069827	Sum of GTIs [s]
l2events	77602	Number of level 2 events



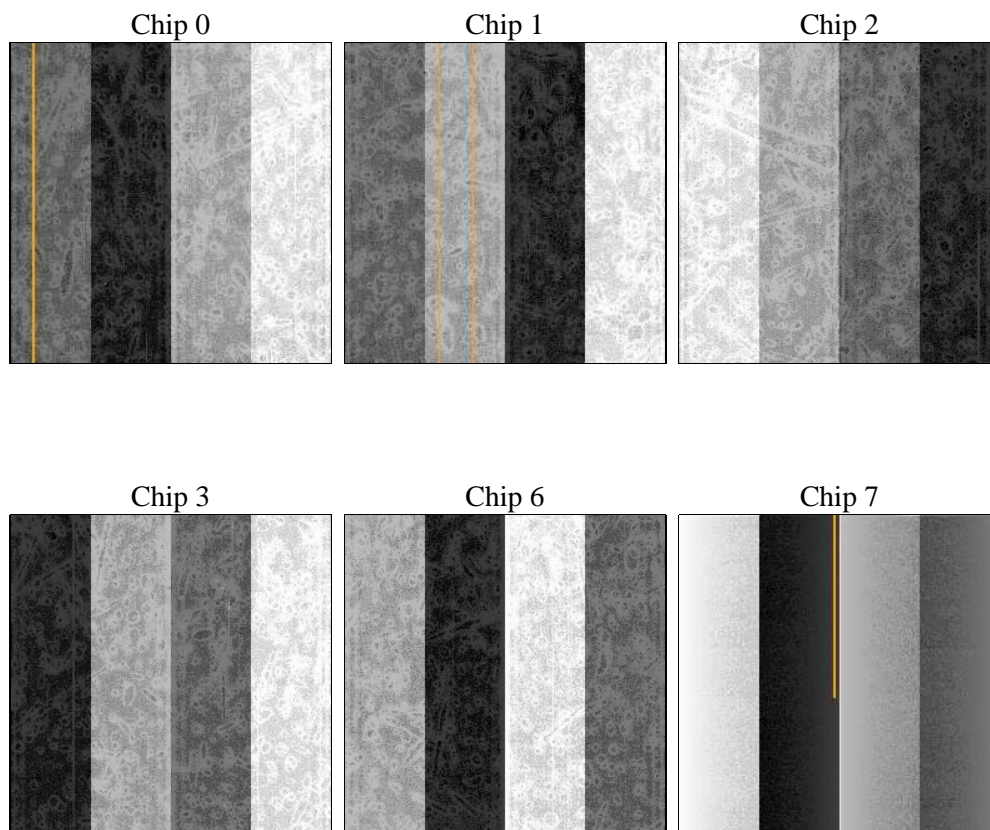
2 OBI

2.1 OBI

2.1.1 Images



2.1.2 Bias



2.1.3 Parameters

obi_num	0	Obi number	sched_exp_time	7755.000000	[s] Scheduled observation exposure time
ascdsver	8.4.5	Processing system revision	ontime	7513.6000069827	Sum of GTIs [s]
caldbver	4.5.1.1	 	ontime0	7513.6000069827	Sum of GTIs [s]
date	2012-09-17T17:59:07	Date and time of file creation	ontime1	7513.6000069827	Sum of GTIs [s]
revision	3	Processing version of data	ontime2	7513.6000069827	Sum of GTIs [s]
			ontime3	7513.6000069827	Sum of GTIs [s]
			ontime6	7513.6000069827	Sum of GTIs [s]
			ontime7	7513.6000069827	Sum of GTIs [s]
			l1events	332780	Number of level 1 events

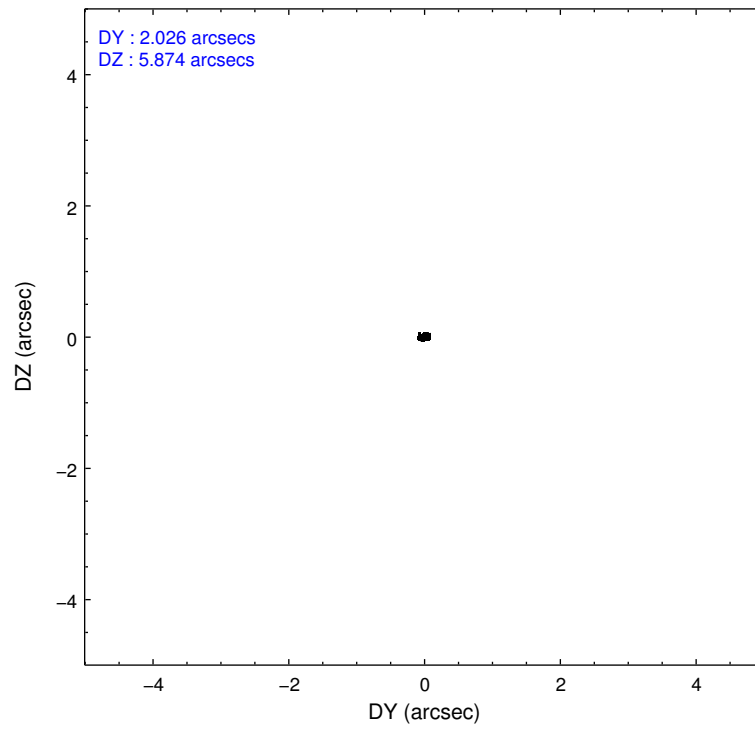
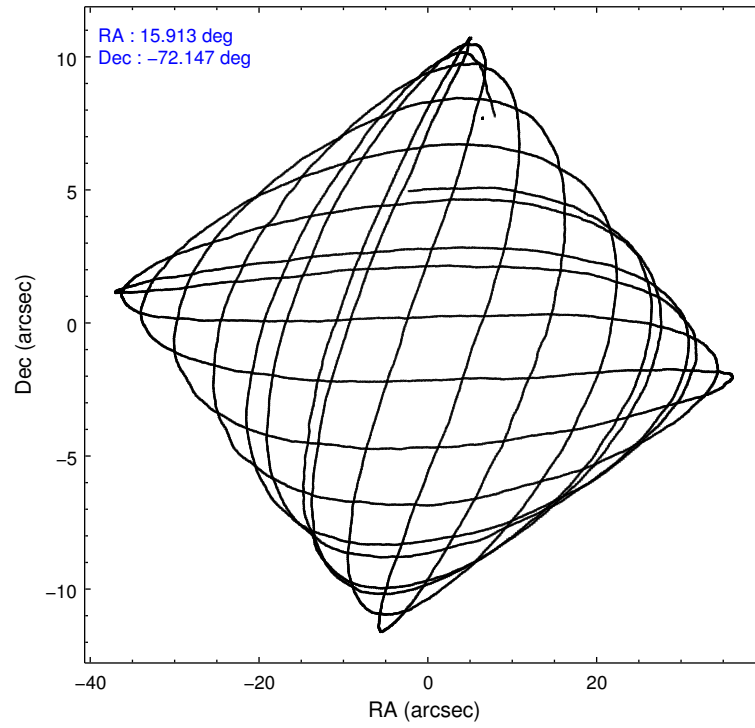
2.1.4 Events

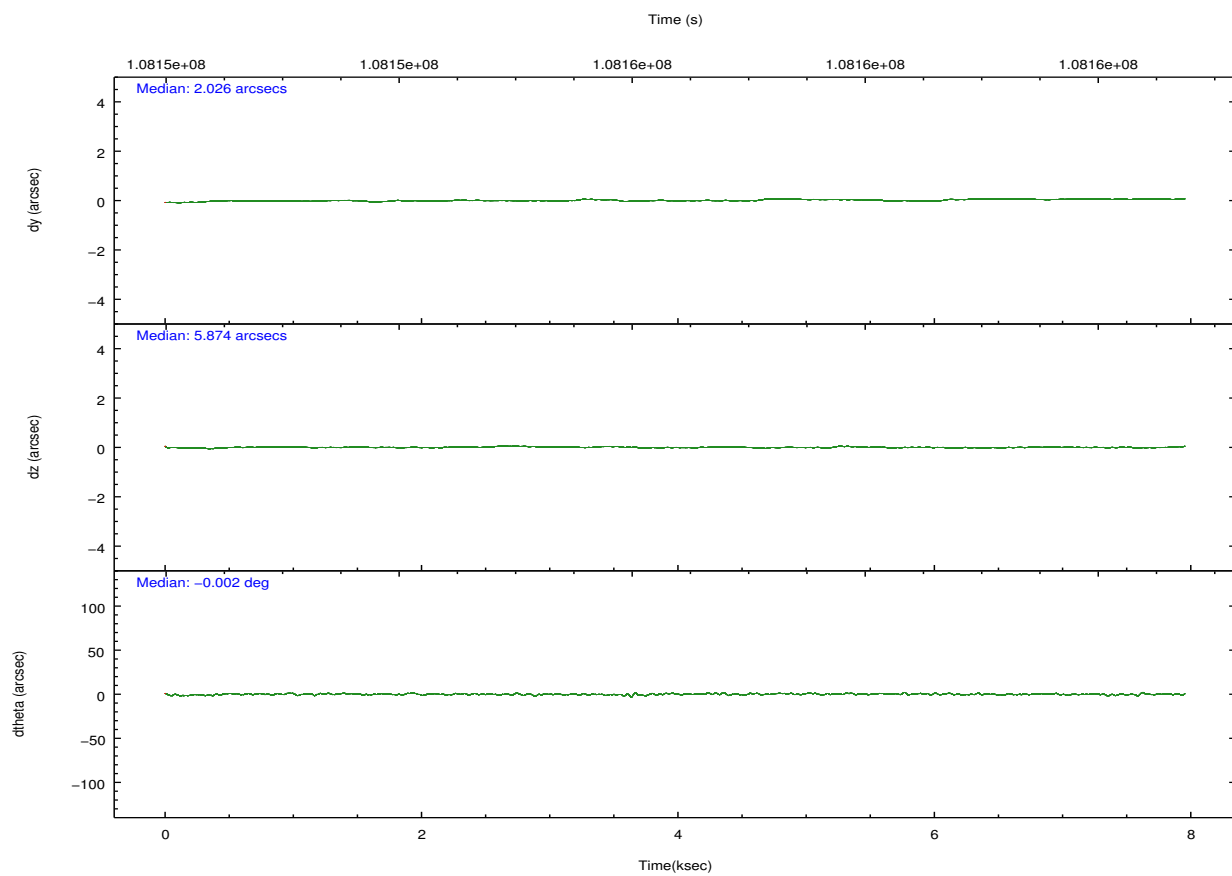
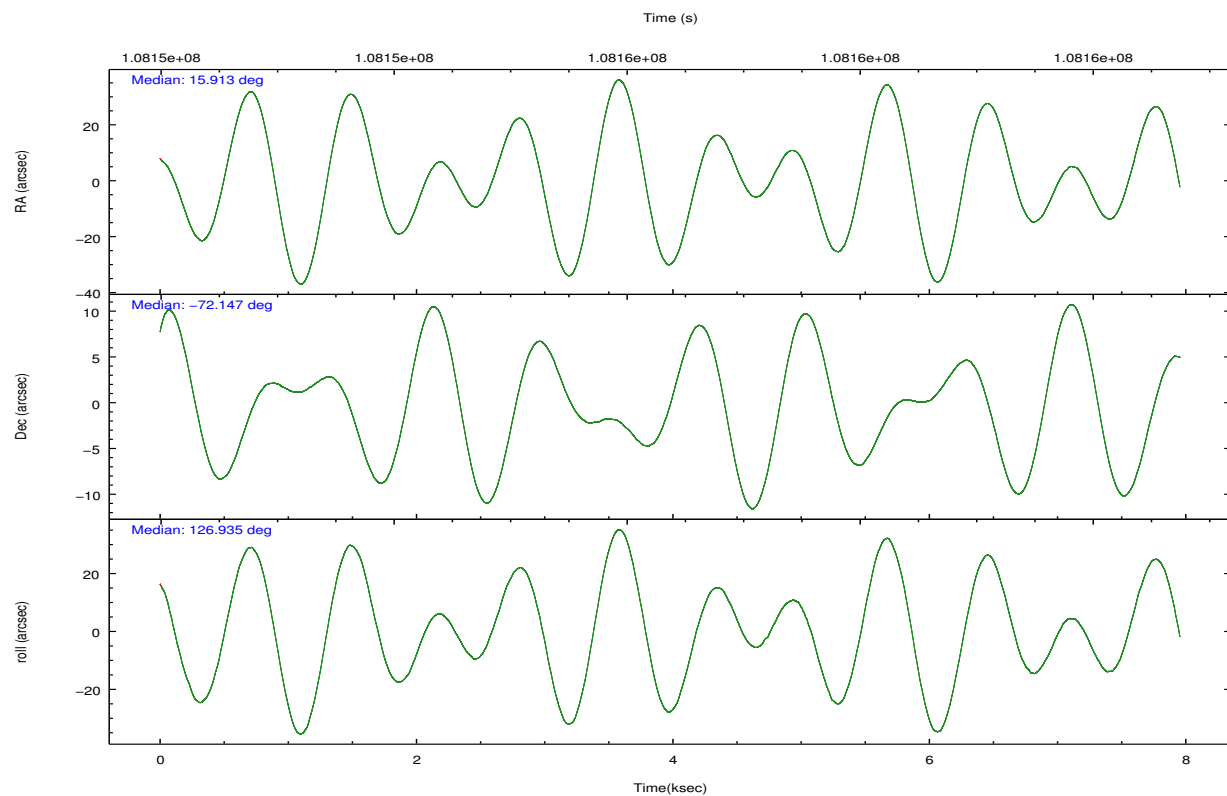
	ccd 0	ccd 1	ccd 2	ccd 3	ccd 6	ccd 7		ccd 0	ccd 1	ccd 2	ccd 3	ccd 6	ccd 7
level 1 events	71866	46850	50162	51117	51148	61637	grade 0 events	25133	2971	2852	2566	3332	2449
rejected events	40318	40227	44077	45265	44232	35637		34%	6%	5%	5%	6%	3%
rejected %	56%	85%	87%	88%	86%	57%	grade 1 events	203	26	25	21	23	67
								0%	0%	0%	0%	0%	0%
							grade 2 events	3176	1300	1263	1175	1257	5185
								4%	2%	2%	2%	2%	8%
							grade 3 events	1029	626	507	530	562	2329
								1%	1%	1%	1%	1%	3%
							grade 4 events	1037	604	497	572	547	2419
								1%	1%	0%	1%	1%	3%
							grade 5 events	1853	1881	1665	1926	2102	5911
								2%	4%	3%	3%	4%	9%
							grade 6 events	1204	1129	971	1013	1223	13639
								1%	2%	1%	1%	2%	22%
							grade 7 events	38231	38313	42382	43314	42102	29638
								53%	81%	84%	84%	82%	48%

2.2 Compared Parameters

Parameter	Planned	Actual	Parameter	Planned	Actual
Instrument	ACIS	ACIS	Obspar format version number	7	7
Detector	ACIS-012367	ACIS-012367	Obspar file type	PREDICTED	ACTUAL
Grating	NONE	NONE	Obspar update status	NONE	UPDATED
Data mode	FAINT	FAINT	Number of optional ACIS chips dropped	0	0
Observation mode	POINTING	POINTING	On-chip summing requested	N	N
[deg] Pointing RA	15.994688	15.91233973677055	Subarray requested	NONE	NONE
[deg] Pointing Dec	-72.157534	-72.14683549505737	Alternating exposures requested	N	N
[deg] Pointing Roll	126.814023	126.9443210061329	[s] Primary exposure time	0.000000	3.2
[s] Window start time (MET)	107740864.184000	107740864.184000			
[s] Window stop time (MET)	110246464.184000	110246464.184000			
[mm] SIM focus pos	-0.782348	-0.7809083437167272			
[mm] SIM defocus	0	0.001439871863259334			
[mm] SIM translation stage pos	-233.592463	-233.5874344608287			
[mm] SIM translation stage offset	0	-0.005018542100998502			
[s] Observation start time (MET)	108152591.184000	108152121.83413			
Observation start date	2001-06-05T18:22:07	2001-06-05T18:15:21			
[s] Observation end time (MET)	108160346.184000	108160480.19696			
Observation end date	2001-06-05T20:31:22	2001-06-05T20:34:40			
Read mode	TIMED	TIMED			

2.3 Aspect



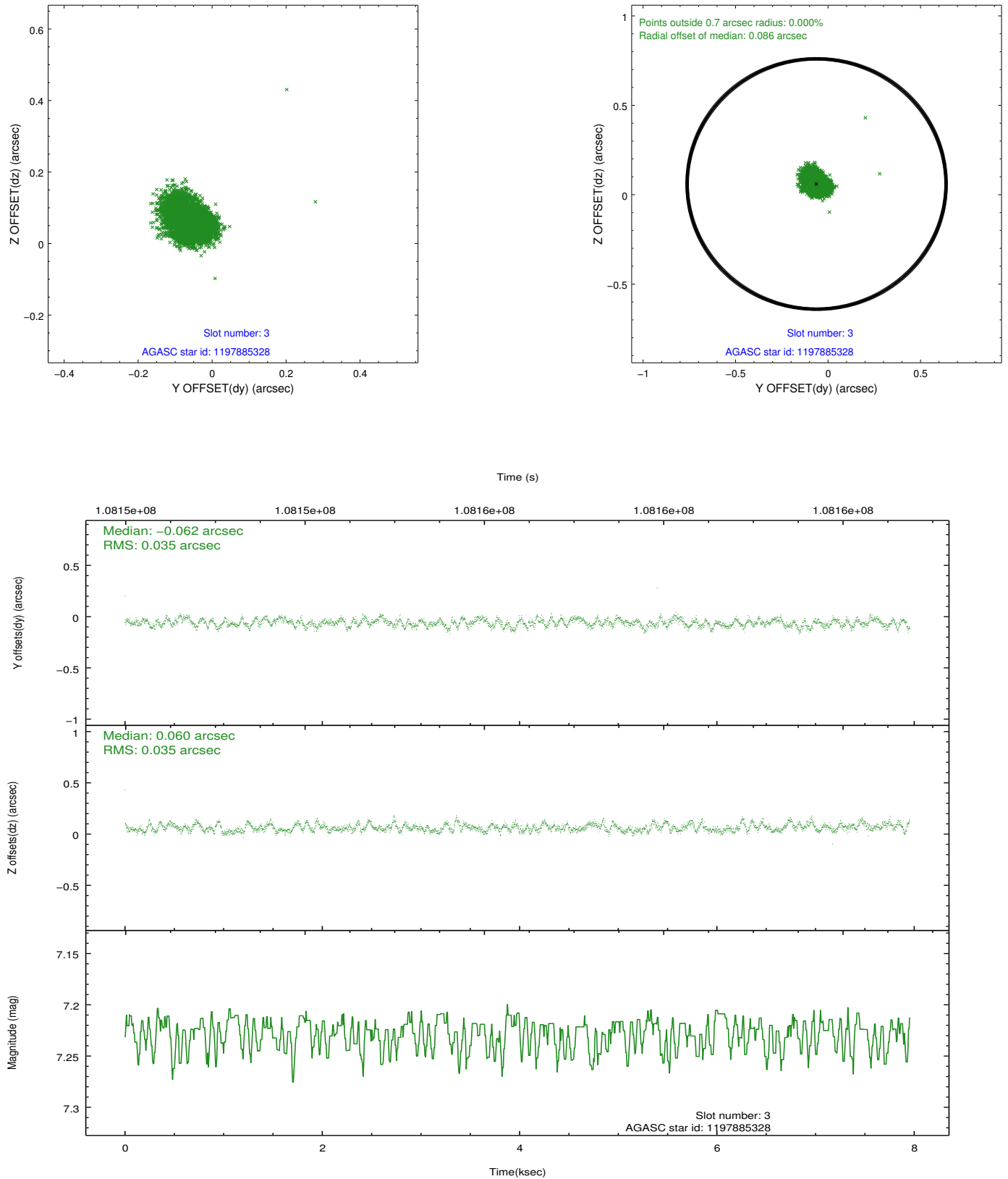


Slot Statistics

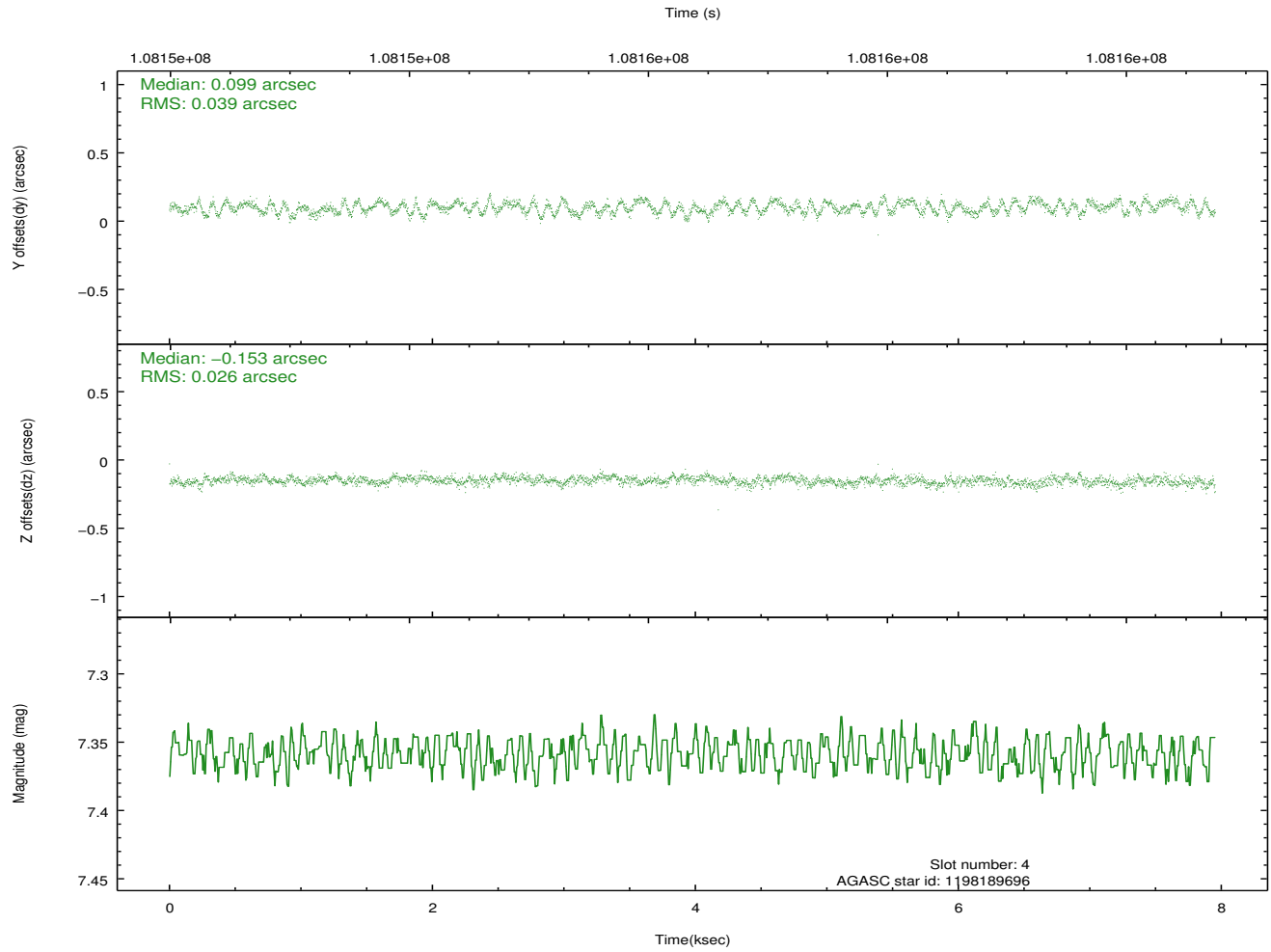
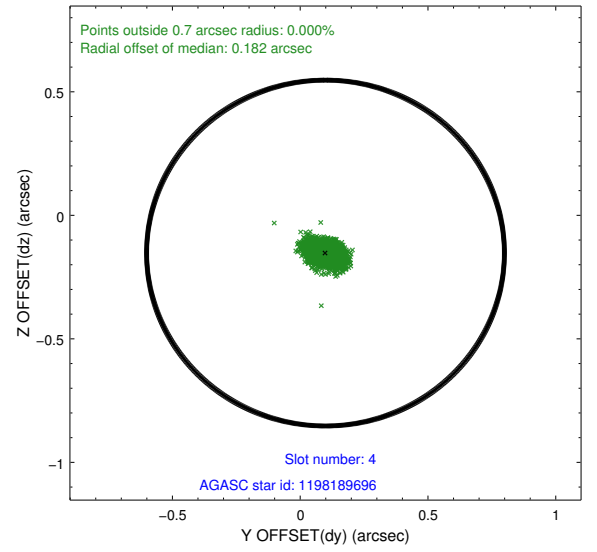
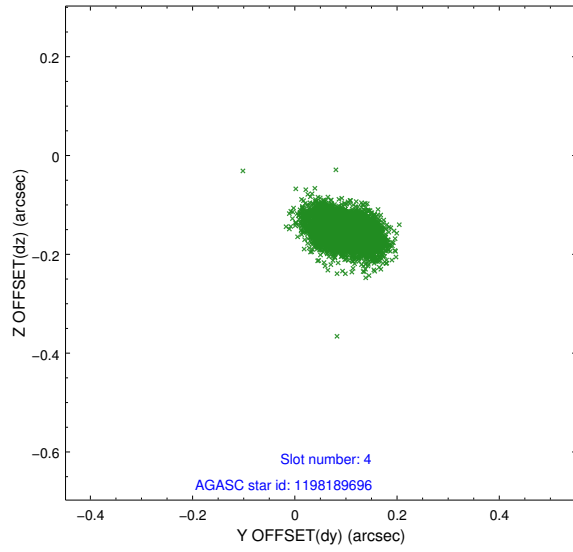
slot	status	id	mag	n_pts	med_dy	med_dz	dr1	dr2	ra	dec	mean_y	mean_z
0	FID	ACIS-I-2	7.15	1939	-0.038	-0.063	0.010	0.019	0.000000	0.000000	-756.42	-835.67
1	FID	ACIS-I-4	7.18	1940	-0.010	0.046	0.009	0.017	0.000000	0.000000	2157.33	1070.28
2	FID	ACIS-I-5	7.23	1941	-0.052	0.086	0.011	0.018	0.000000	0.000000	-1809.36	1068.95
3	GUIDE	1197885328	7.23	3881	-0.062	0.060	0.053	0.082	16.283090	-71.733943	1026.38	-1173.22
4	GUIDE	1198189696	7.36	3881	0.099	-0.153	0.049	0.080	15.223750	-72.697522	-1064.88	1828.76
5	GUIDE	1197750936	7.58	3880	-0.180	0.112	0.054	0.089	15.387940	-71.549550	2164.40	-754.53
6	GUIDE	1197884536	8.49	3880	-0.014	0.043	0.061	0.099	17.160729	-71.835289	136.37	-1734.77
7	GUIDE	1197749664	9.57	3879	0.155	-0.064	0.093	0.151	15.809015	-72.366369	-479.67	612.71

2.4 Star Slots

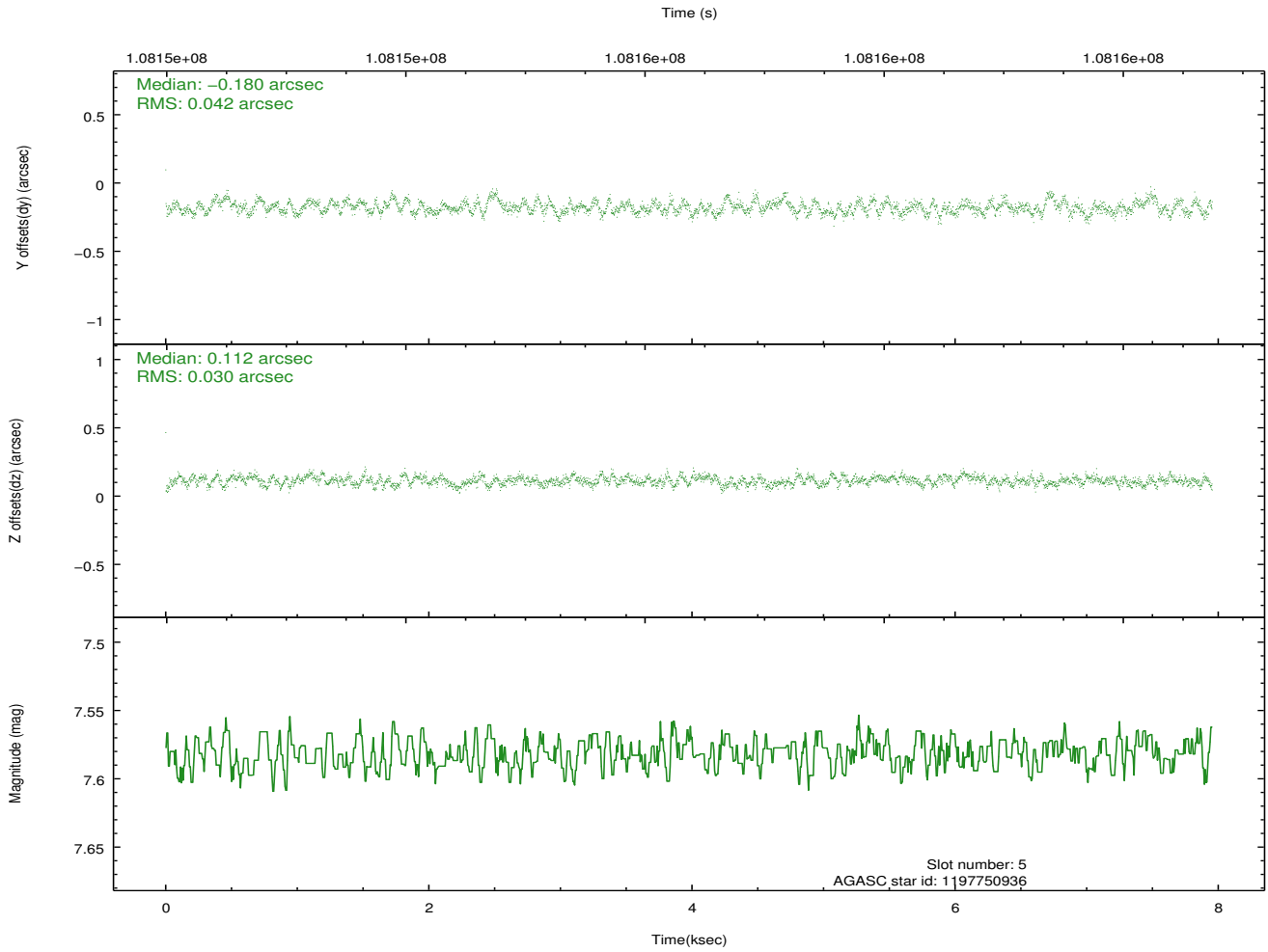
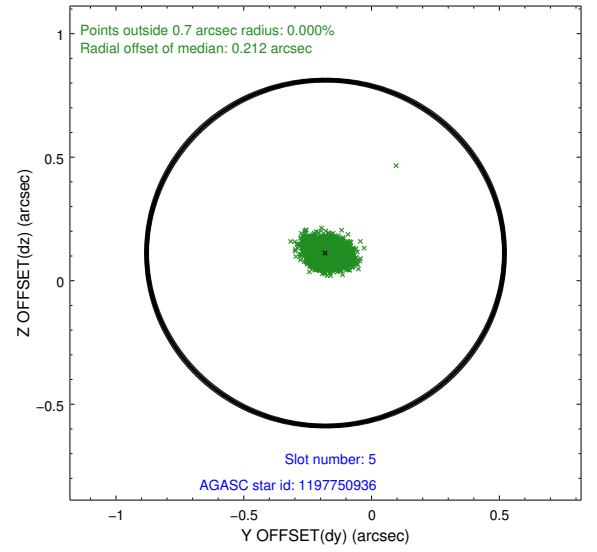
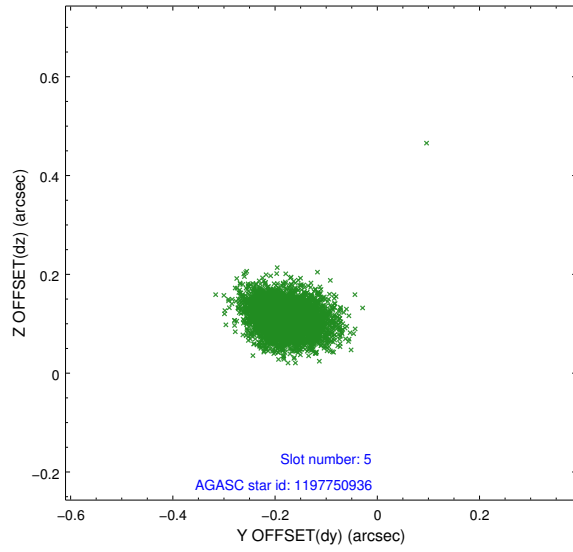
2.4.1 Slot 3



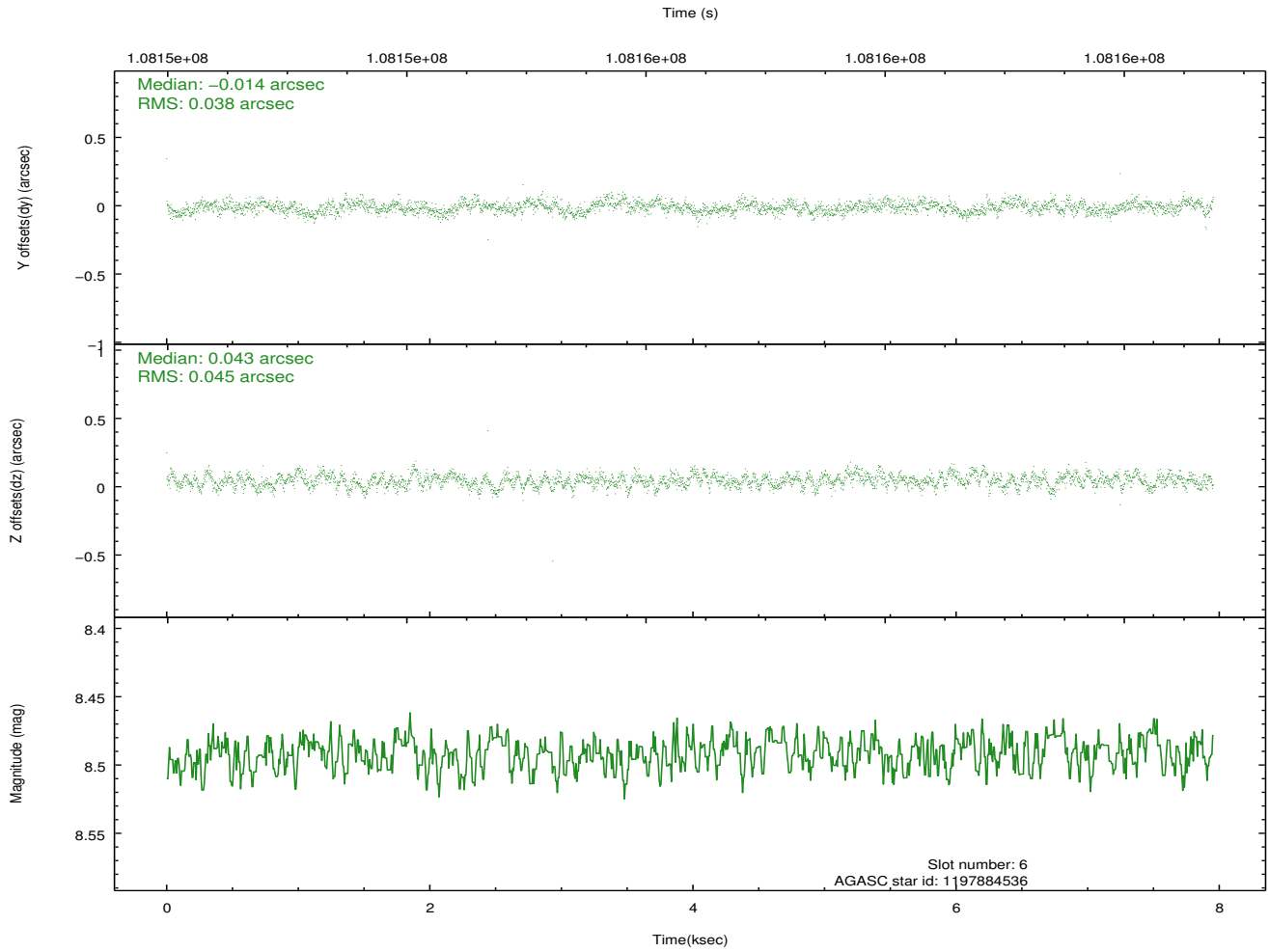
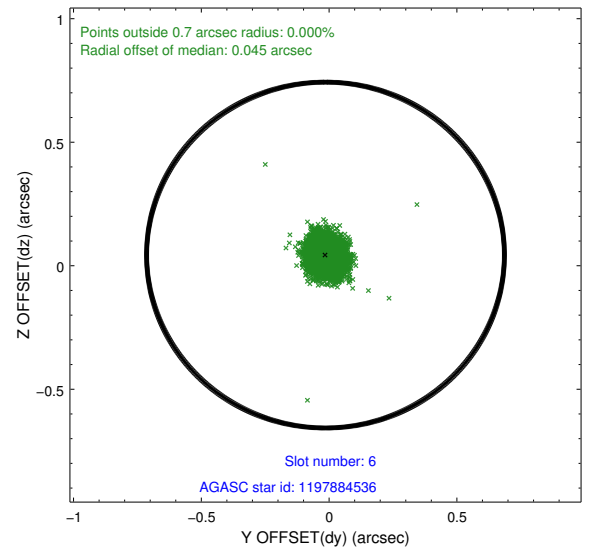
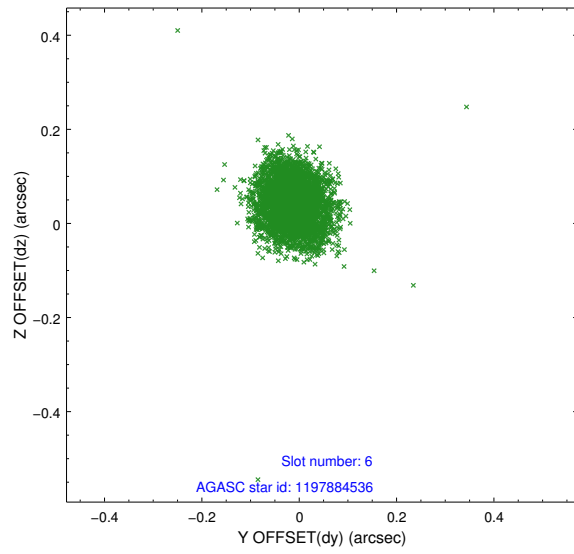
2.4.2 Slot 4



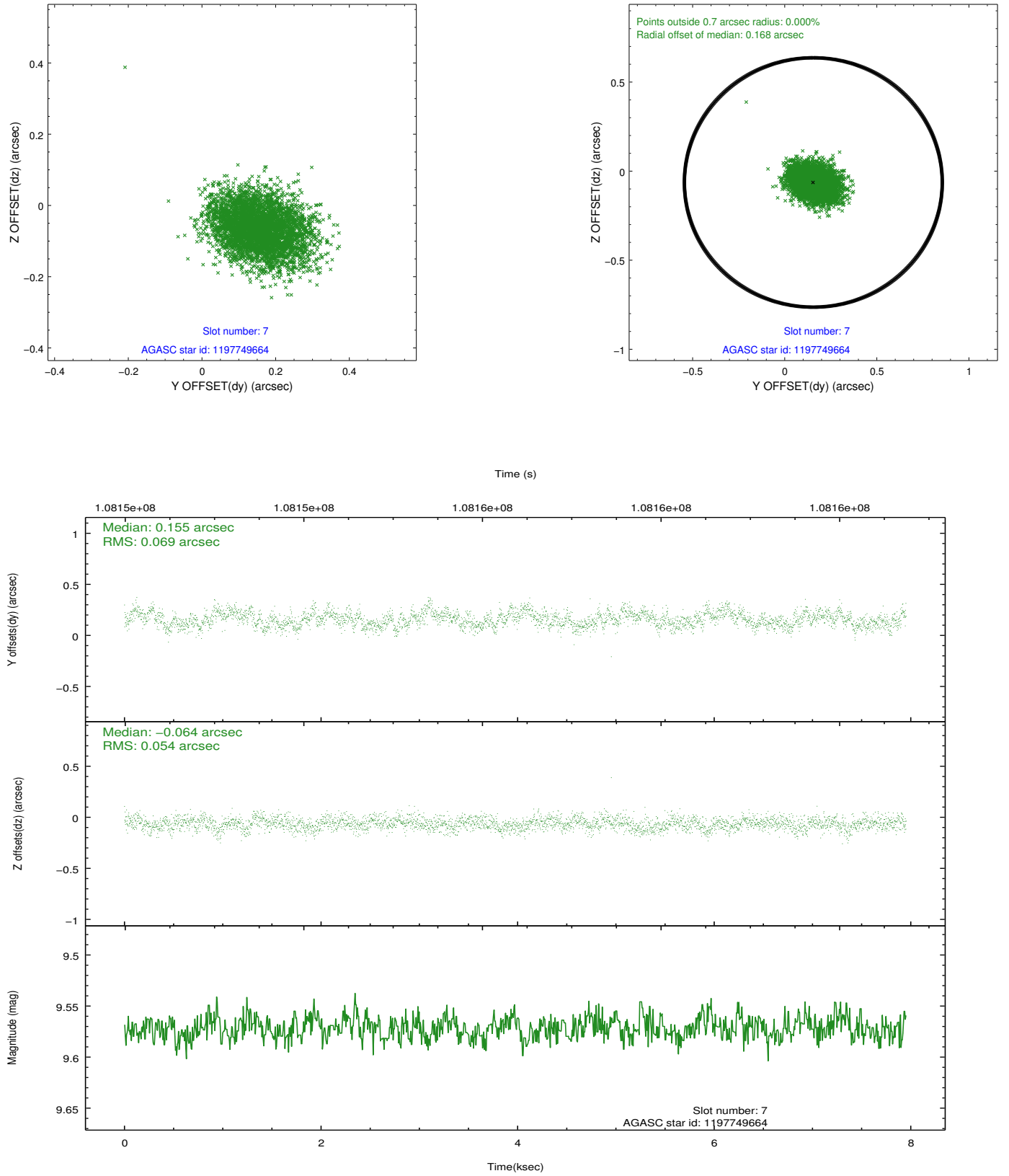
2.4.3 Slot 5



2.4.4 Slot 6

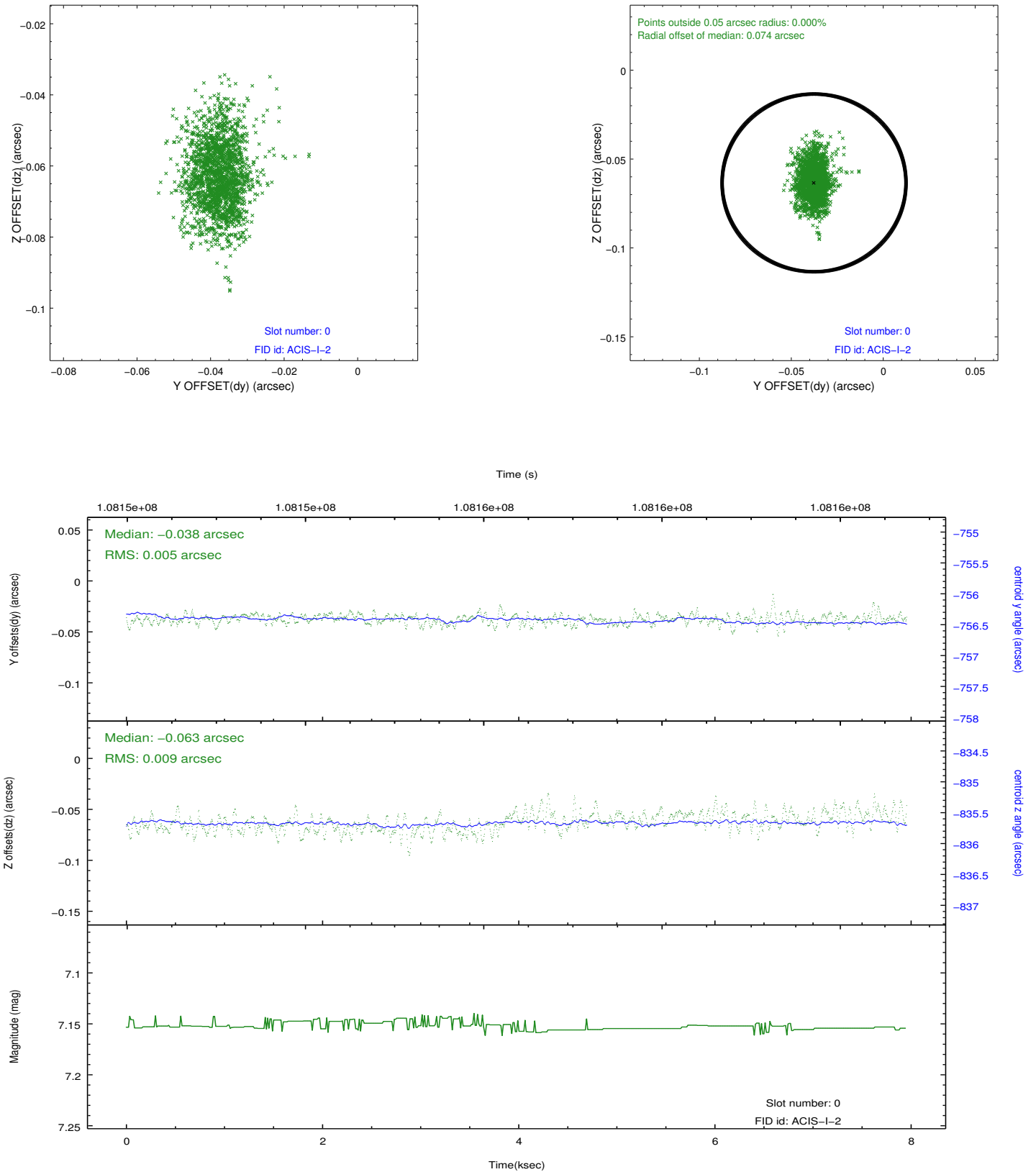


2.4.5 Slot 7

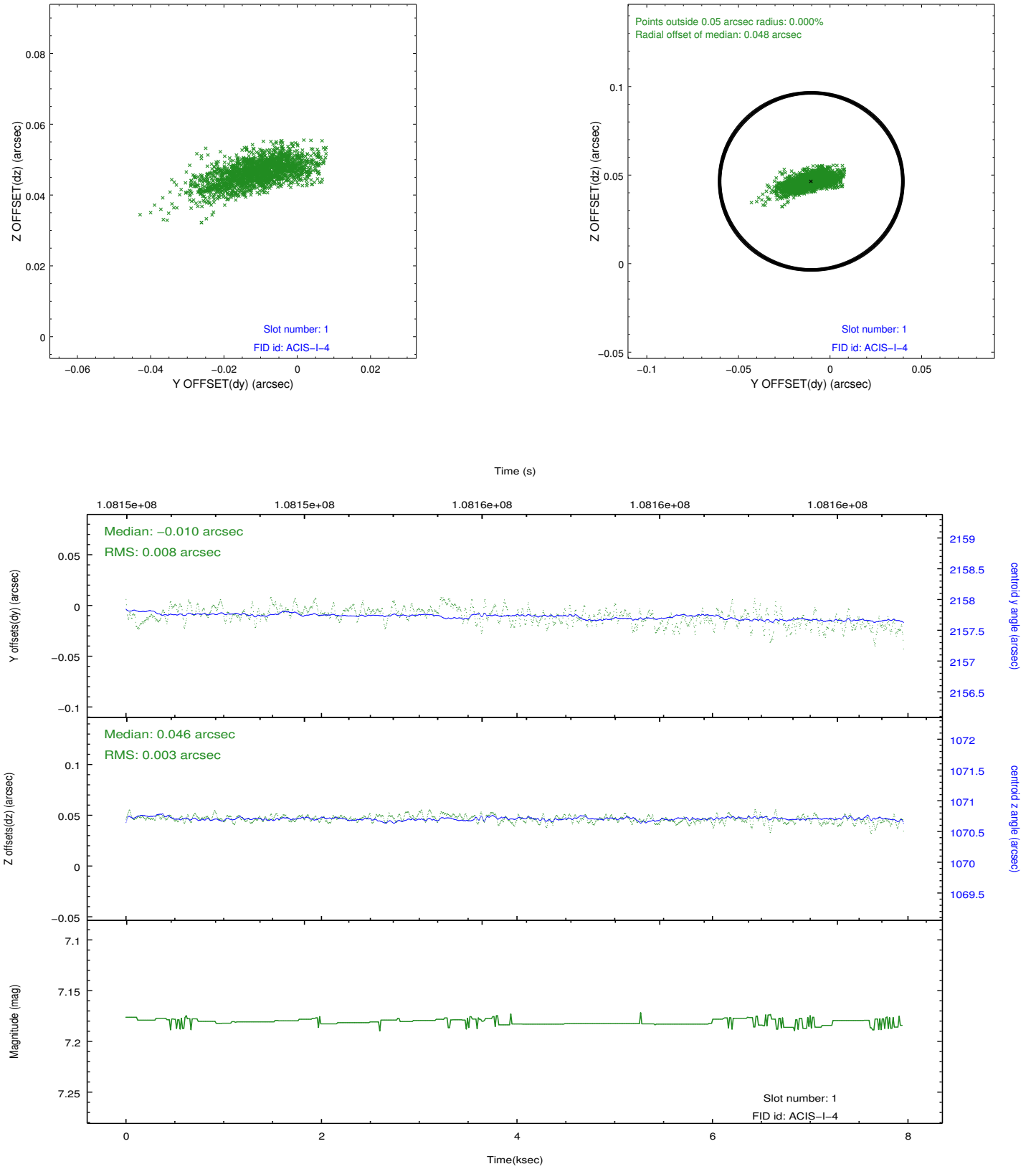


2.5 FID Slots

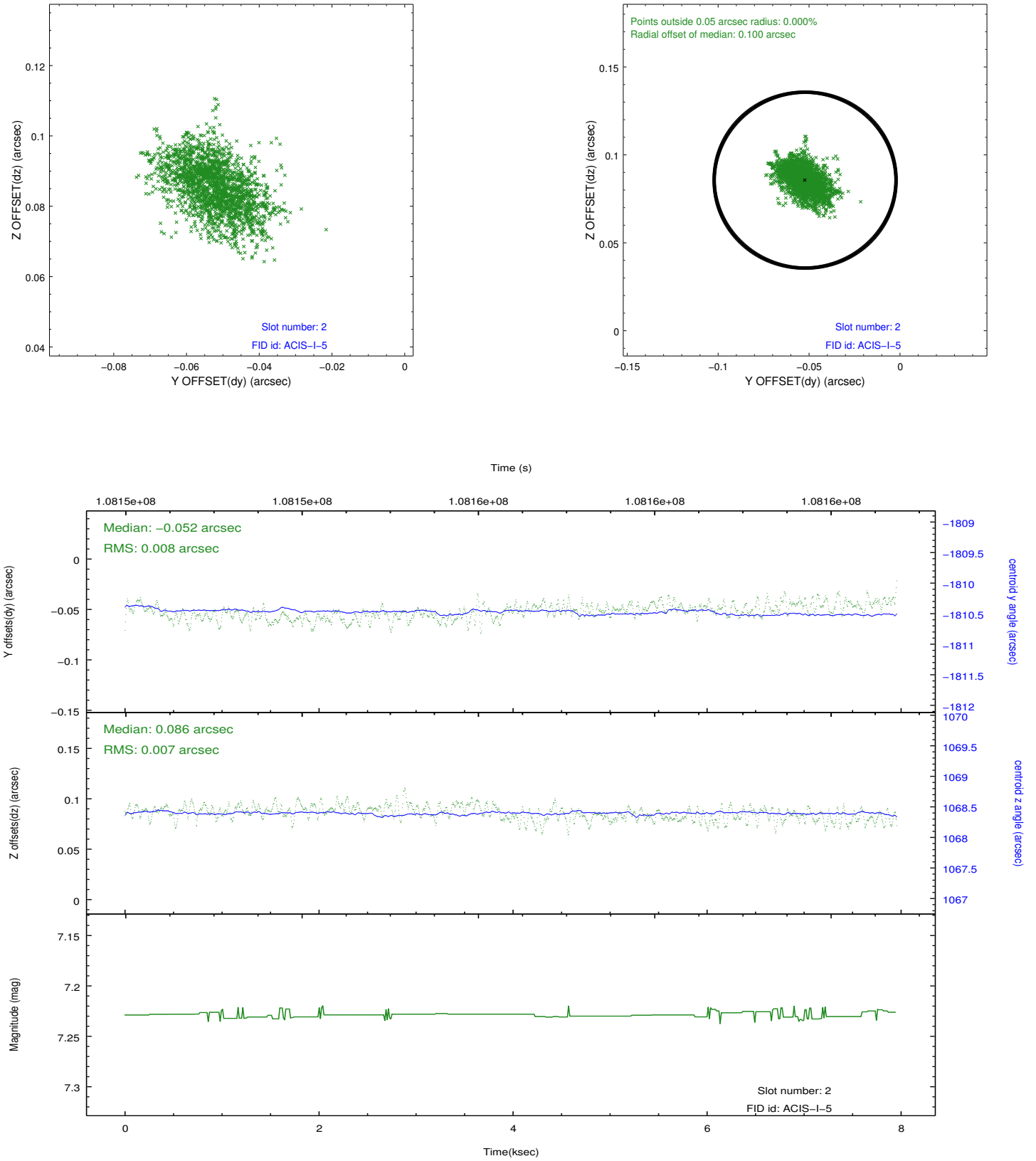
2.5.1 Slot 0



2.5.2 Slot 1



2.5.3 Slot 2



A Summary

A.1 Status

V&V Scientist	Jen Lauer
V&V Date (YYYY-MM-DD)	2012.09.20
V&V Edition	1
V&V Disposition and Status	OK
V&V Charge Time	7.516

A.2 Comments

Window constraint OK.