

V&V Reference Report

L2 ASCDS Version : 8.4.5

Observation 13602 - L2 Version 1
Chandra X-Ray Center

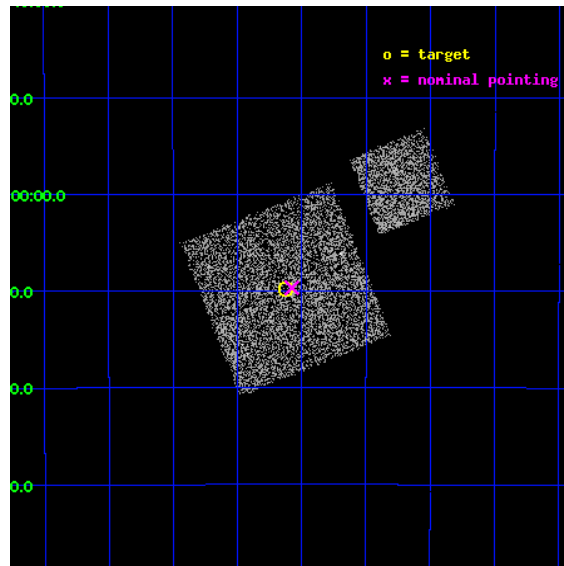
L2 Processing Date : Aug 20 2012

Contents

1	Front	2
2	OBI	3
2.1	OBI	3
2.1.1	Images	3
2.1.2	Bias	3
2.1.3	Parameters	4
2.1.4	Events	4
2.2	Compared Parameters	5
2.3	Aspect	6
2.4	Star Slots	9
2.4.1	Slot 3	9
2.4.2	Slot 4	10
2.4.3	Slot 5	11
2.4.4	Slot 6	12
2.4.5	Slot 7	13
2.5	FID Slots	14
2.5.1	Slot 0	14
2.5.2	Slot 1	15
2.5.3	Slot 2	16
A	Summary	17
A.1	Status	17
A.2	Comments	17

1 Front

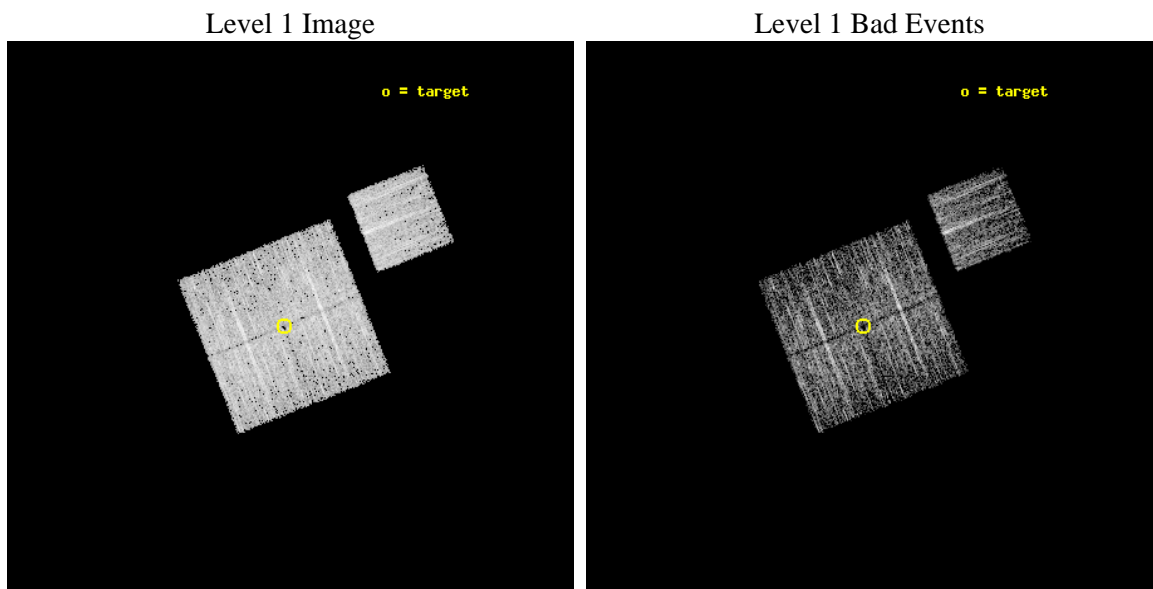
seq_num	801163	Sequence number
obs_id	13602	Observation id
title	To The Outer Limits of Clusters with Chandra and Suzaku	Proposal t
observer	Dr. Eric Miller	Principal investigator
object	A2667	Source name
dtcycle	0	
cycle	P	events from which exps? Prim/Second/Both
ra_targ	358.15637	Observer's specified target RA [deg]
dec_targ	-26.162728	Observer's specified target Dec [deg]
ra_nom	358.14407757019	Nominal RA [deg]
dec_nom	-26.161257453385	Nominal Dec [deg]
roll_nom	68.2099779309	Nominal Roll [deg]
revision	1	Processing version of data
ontime	5084.0000391006	Sum of GTIs [s]
livetime	5017.5738358034	Livetime [s]
ontime0	5080.8589886427	Sum of GTIs [s]
ontime1	5084.0000391006	Sum of GTIs [s]
ontime2	5080.8589887023	Sum of GTIs [s]
ontime3	5084.0000391006	Sum of GTIs [s]
ontime6	5084.0000391006	Sum of GTIs [s]
l2events	13567	Number of level 2 events



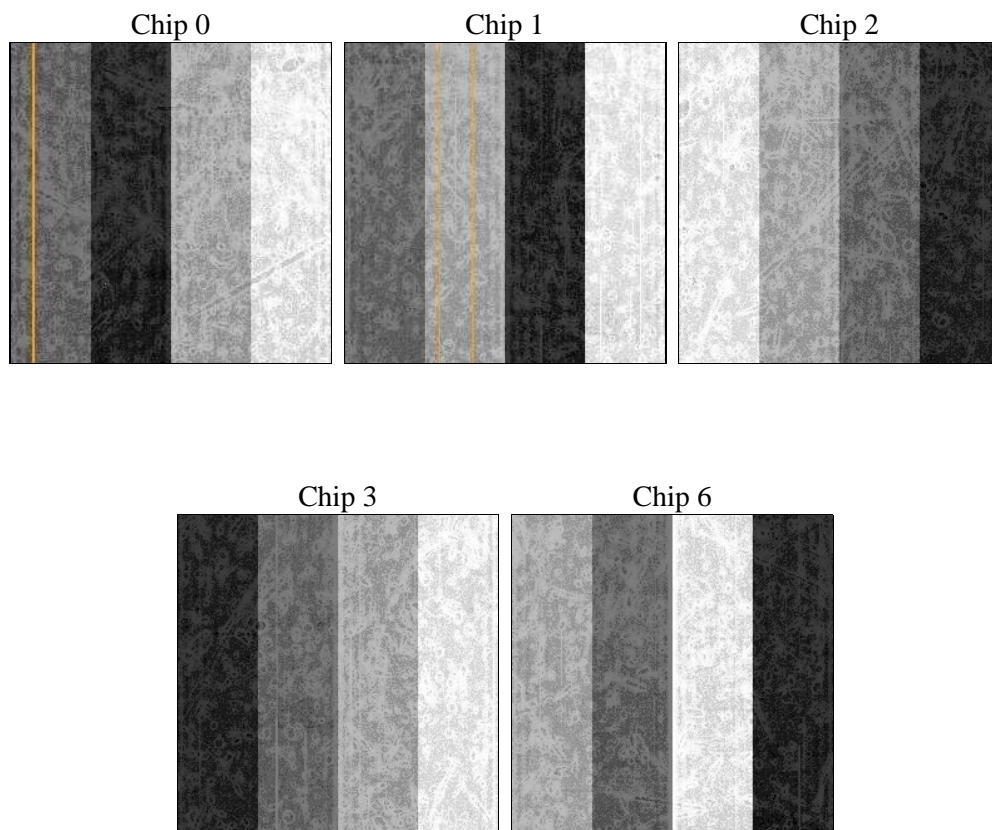
2 OBI

2.1 OBI

2.1.1 Images



2.1.2 Bias



2.1.3 Parameters

obi_num	0	Obi number	sched_exp_time	5000.000000	[s] Scheduled observation exposure time
ascdsver	8.4.5	Processing system revision	ontime	5084.0000391006	Sum of GTIs [s]
caldsver	4.5.1.1	 	ontime0	5080.8589886427	Sum of GTIs [s]
date	2012-08-20T20:27:23	Date and time of file creation	ontime1	5084.0000391006	Sum of GTIs [s]
revision	1	Processing version of data	ontime2	5080.8589887023	Sum of GTIs [s]
			ontime3	5084.0000391006	Sum of GTIs [s]
			ontime6	5084.0000391006	Sum of GTIs [s]
			l1events	125662	Number of level 1 events

2.1.4 Events

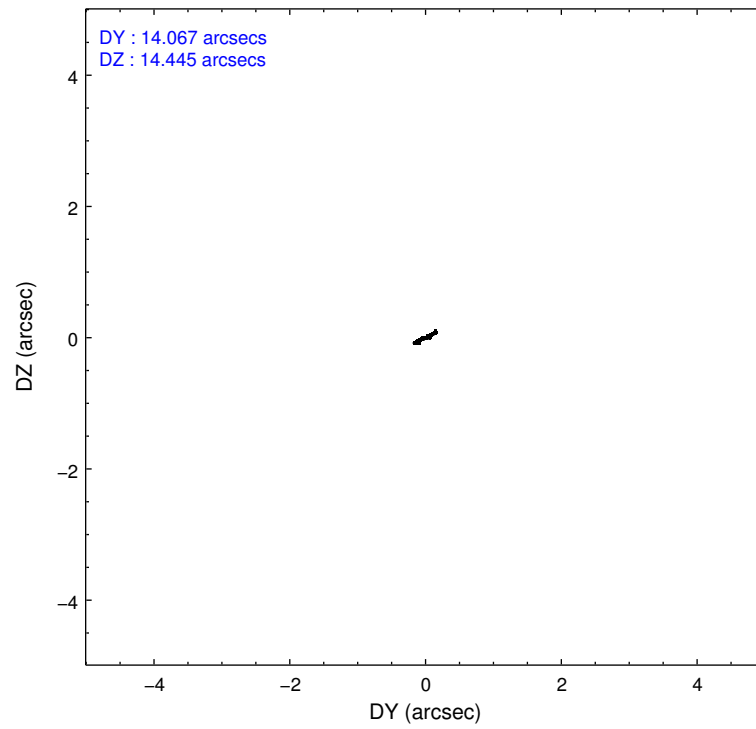
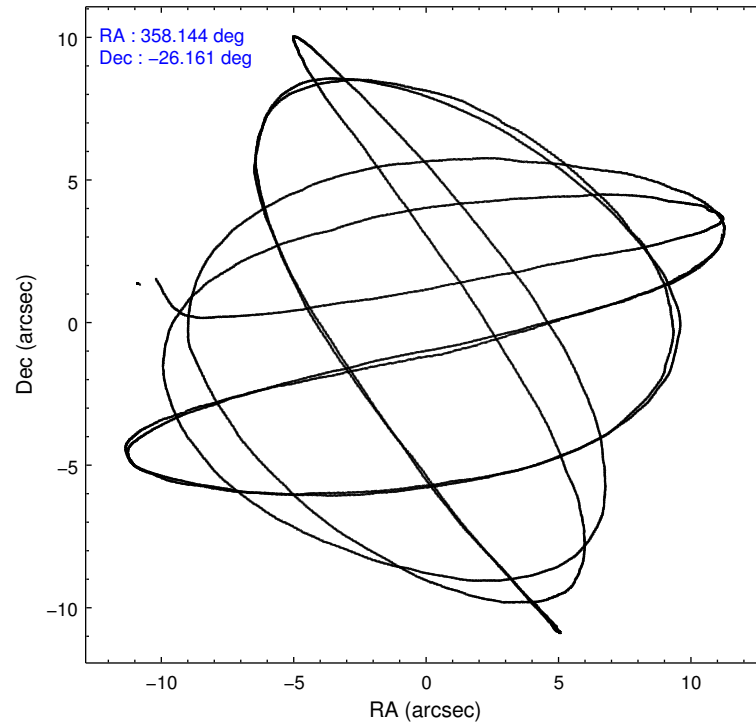
	ccd 0	ccd 1	ccd 2	ccd 3	ccd 6
level 1 events	23915	26238	25281	24274	25954
rejected events	20854	22820	22213	21331	22402
rejected %	87%	86%	87%	87%	86%

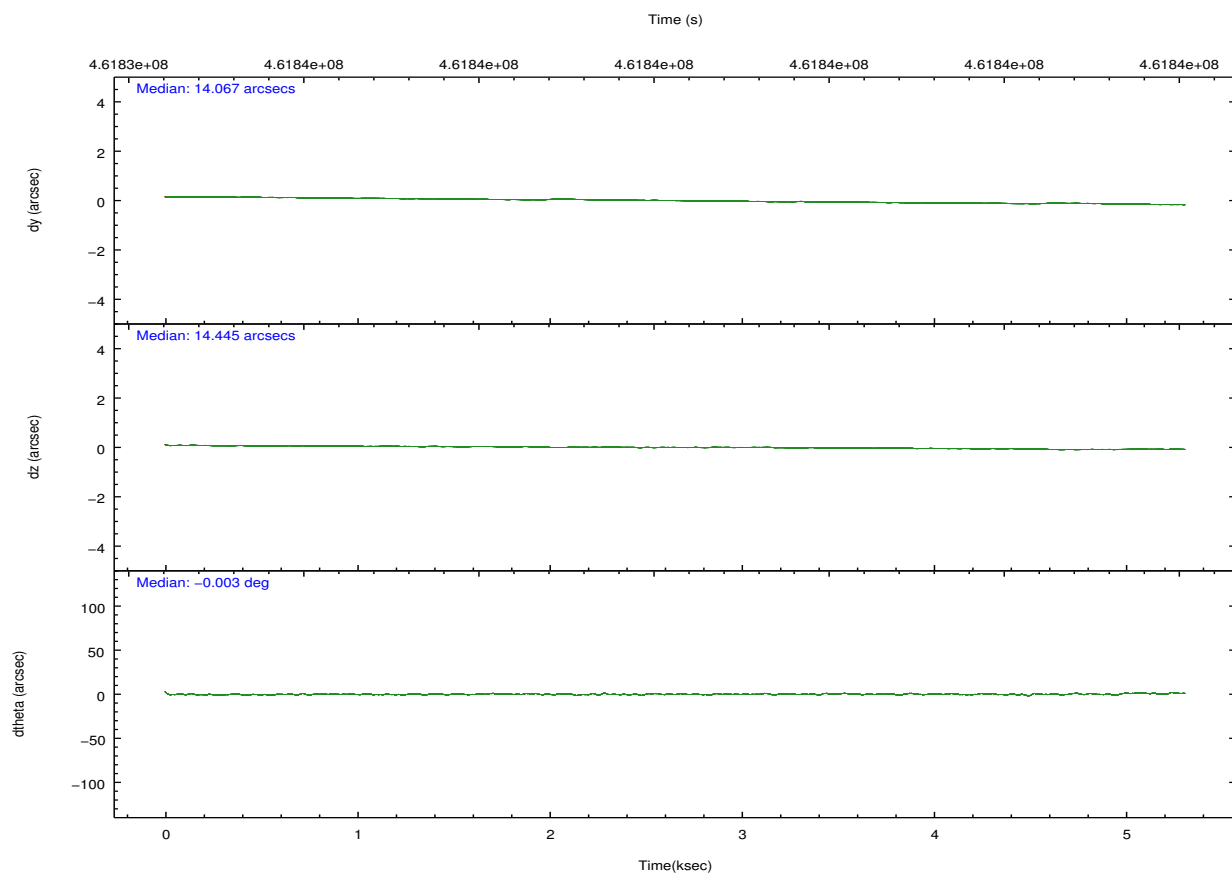
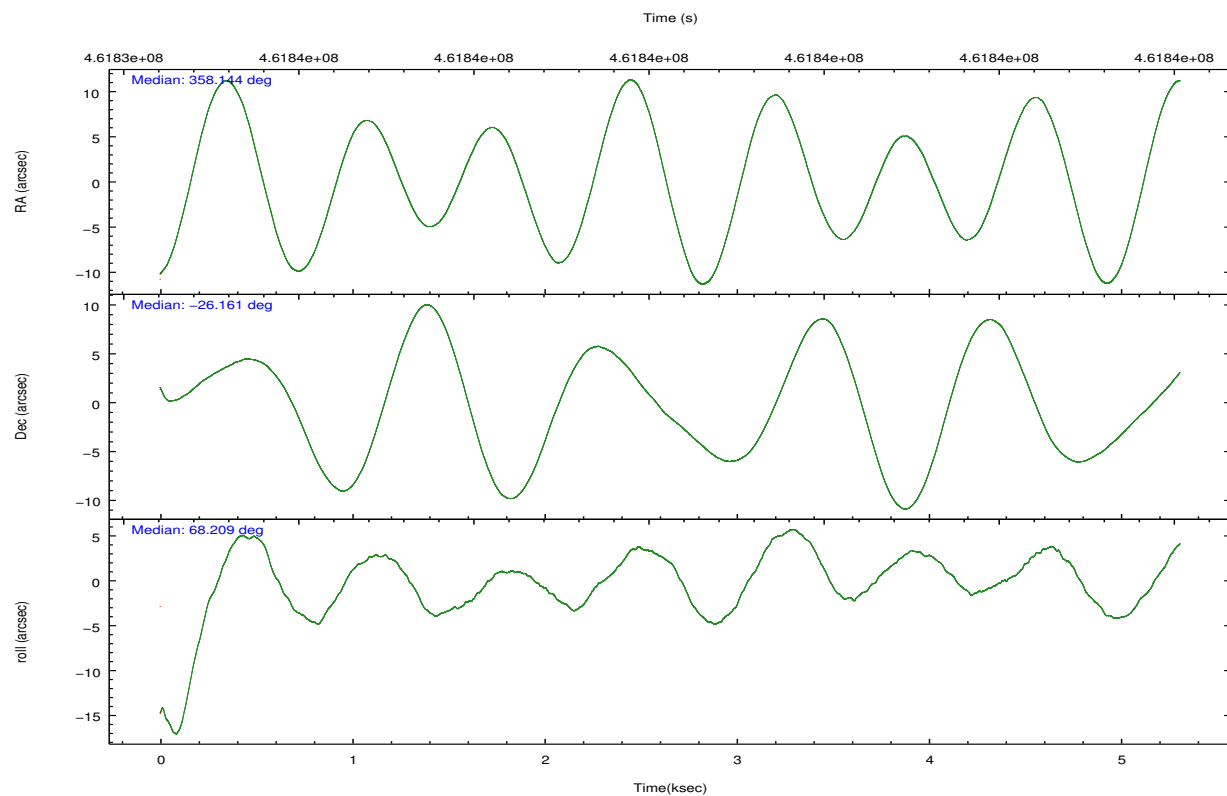
	ccd 0	ccd 1	ccd 2	ccd 3	ccd 6
grade 0 events	1068	1199	1197	1050	1468
	4%	4%	4%	4%	5%
grade 1 events	8	12	17	16	19
	0%	0%	0%	0%	0%
grade 2 events	767	785	681	655	792
	3%	2%	2%	2%	3%
grade 3 events	316	333	333	330	333
	1%	1%	1%	1%	1%
grade 4 events	297	341	322	272	292
	1%	1%	1%	1%	1%
grade 5 events	1186	1239	1133	1243	1284
	4%	4%	4%	5%	4%
grade 6 events	617	763	537	638	669
	2%	2%	2%	2%	2%
grade 7 events	19656	21566	21061	20070	21097
	82%	82%	83%	82%	81%

2.2 Compared Parameters

Parameter	Planned	Actual	Parameter	Planned	Actual
Instrument	ACIS	ACIS	Obspar format version number	7	7
Detector	ACIS-01236	ACIS-01236	Obspar file type	PREDICTED	ACTUAL
Grating	NONE	NONE	Obspar update status	NONE	UPDATED
Data mode	VFAINT	VFAINT	CCD I0 on	Y	Y
Observation mode	POINTING	POINTING	CCD I1 on	Y	Y
[deg] Pointing RA	358.148580	358.1440775701885	CCD I2 on	Y	Y
[deg] Pointing Dec	-26.188485	-26.16125745338522	CCD I3 on	Y	Y
[deg] Pointing Roll	68.003267	68.20997793090022	CCD S0 on	N	N
[mm] SIM focus pos	-0.782348	-0.7809083437167272	CCD S1 on	N	N
[mm] SIM defocus	0	0.001439871863259334	CCD S2 on	O1	Y
[mm] SIM translation stage pos	-233.592463	-233.5899487761303	CCD S3 on	N	N
[mm] SIM translation stage offset	0	-0.002504226799430853	CCD S4 on	N	N
[s] Observation start time (MET)	461834767.184000	461833768.89592	CCD S5 on	N	N
Observation start date	2012-08-20T07:25:00	2012-08-20T07:09:28	Number of optional ACIS chips dropped	0	0
[s] Observation end time (MET)	461839767.184000	461840503.65878	On-chip summing requested	N	N
Observation end date	2012-08-20T08:48:20	2012-08-20T09:01:43	Subarray requested	NONE	NONE
Read mode	TIMED	TIMED	Alternating exposures requested	N	N
			[s] Primary exposure time	0.000000	3.1

2.3 Aspect



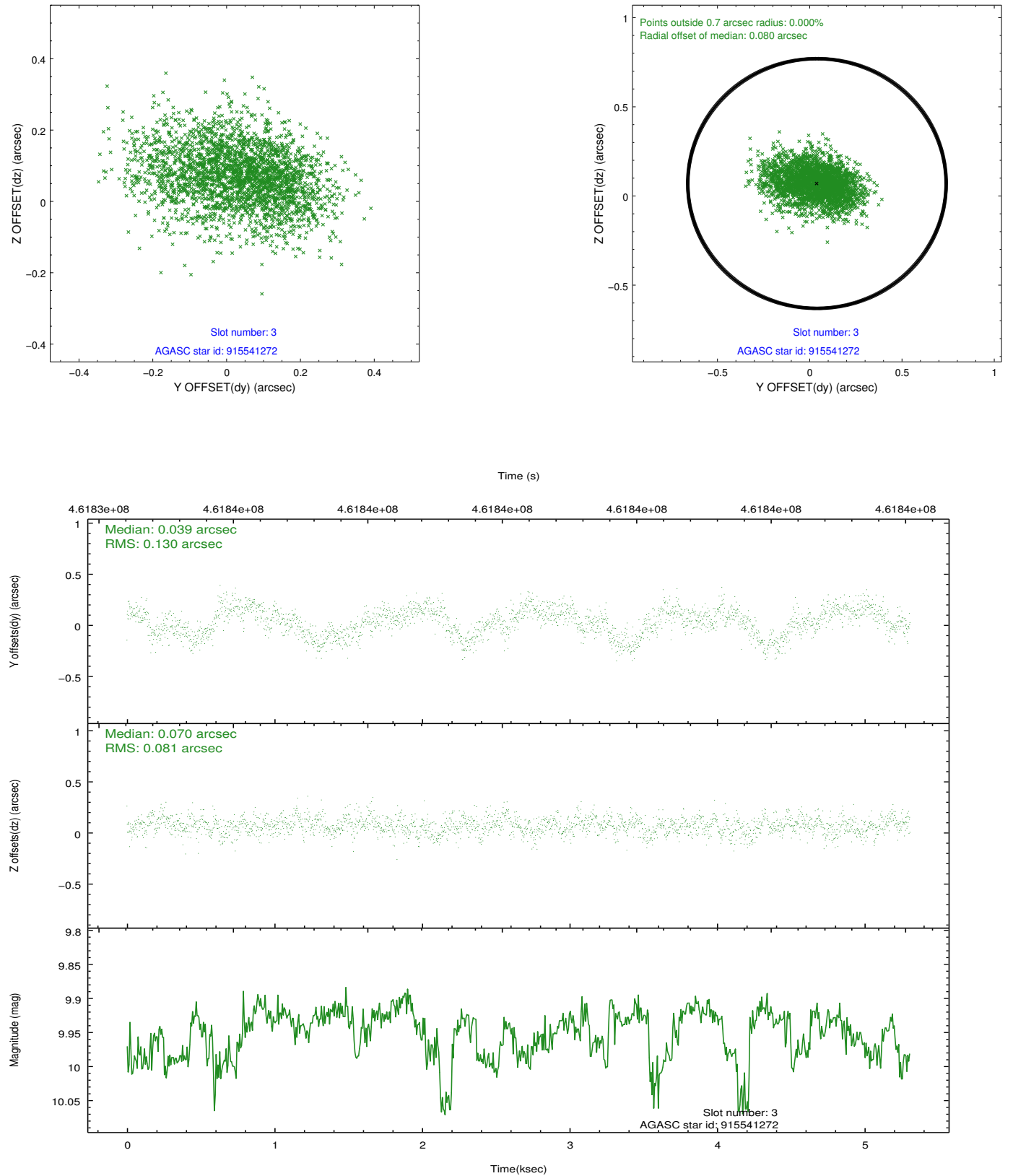


Slot Statistics

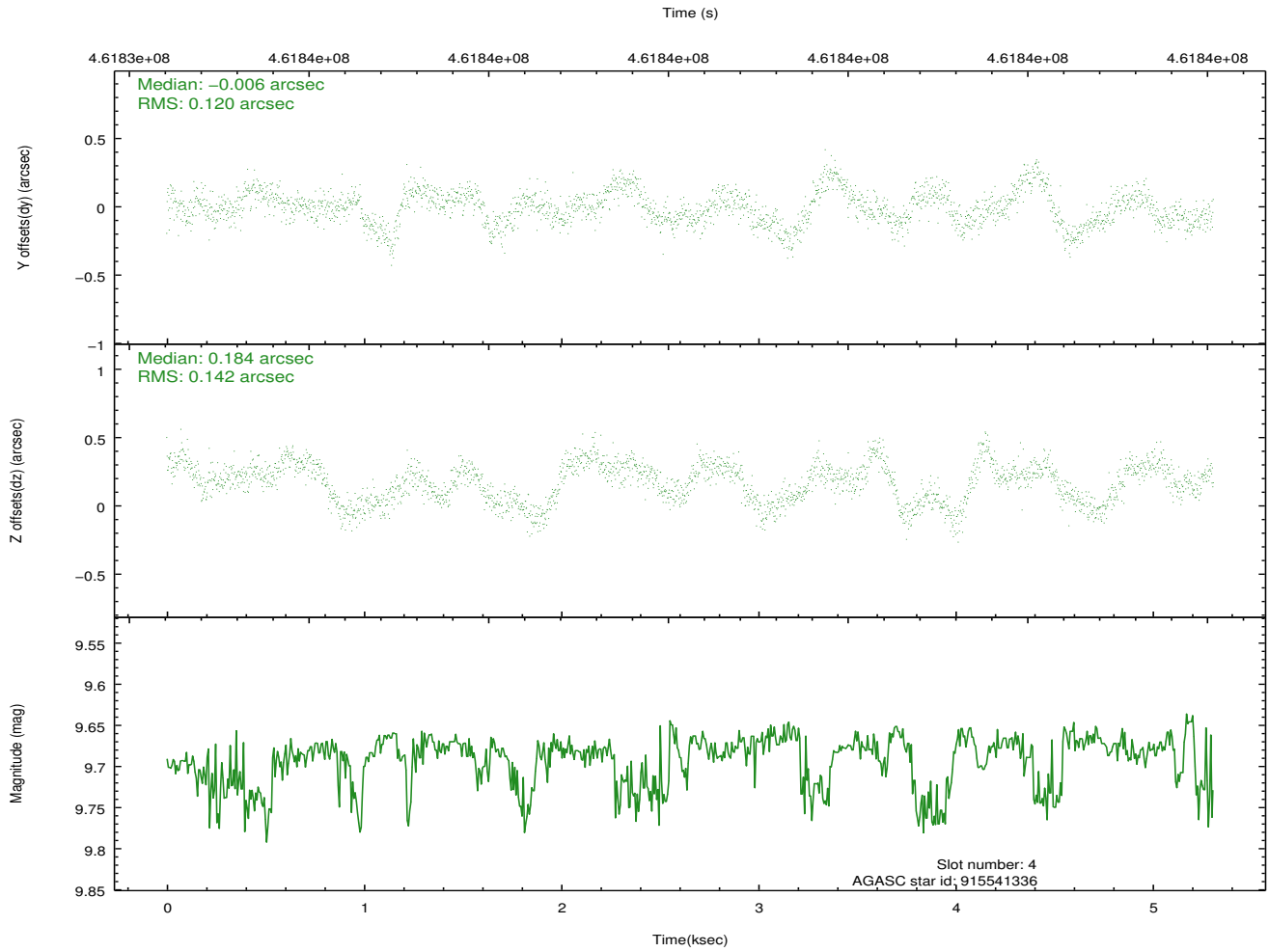
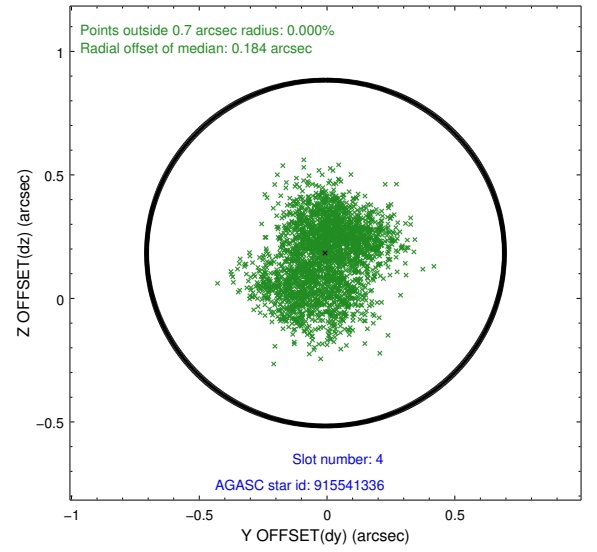
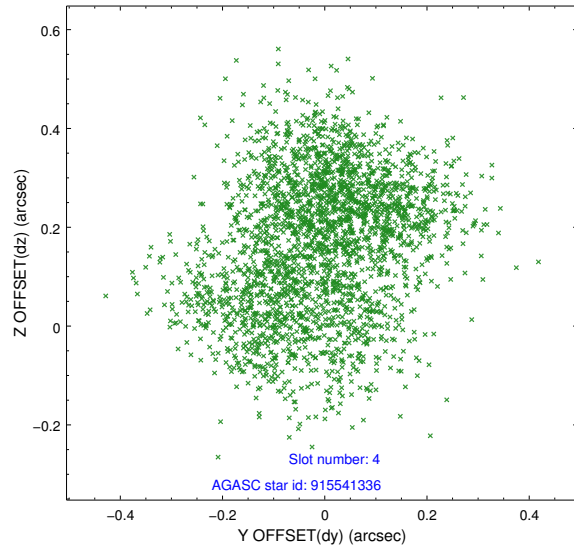
slot	status	id	mag	n_pts	med_dy	med_dz	dr1	dr2	ra	dec	mean_y	mean_z
0	FID	ACIS-I-1	7.16	1295	-0.005	0.011	0.009	0.015	0.000000	0.000000	925.43	-837.95
1	FID	ACIS-I-4	7.06	1295	0.204	0.019	0.007	0.013	0.000000	0.000000	2146.29	1061.31
2	FID	ACIS-I-5	7.15	1295	-0.297	0.041	0.007	0.012	0.000000	0.000000	-1821.43	1060.42
3	GUIDE	915541272	9.95	2586	0.039	0.070	0.162	0.270	358.336379	-25.689400	1892.96	108.62
4	GUIDE	915541336	9.68	2585	-0.006	0.184	0.202	0.313	357.582055	-26.642452	-2199.91	1075.62
5	GUIDE	915541512	10.34	2589	0.008	-0.426	0.205	0.326	357.638012	-25.936876	217.13	1870.65
6	GUIDE	915543976	9.39	2588	-0.220	0.309	0.134	0.211	358.296290	-26.060420	606.25	-269.31
7	GUIDE	915546120	8.81	2588	0.190	-0.107	0.135	0.197	359.029534	-25.907978	1996.65	-2270.65

2.4 Star Slots

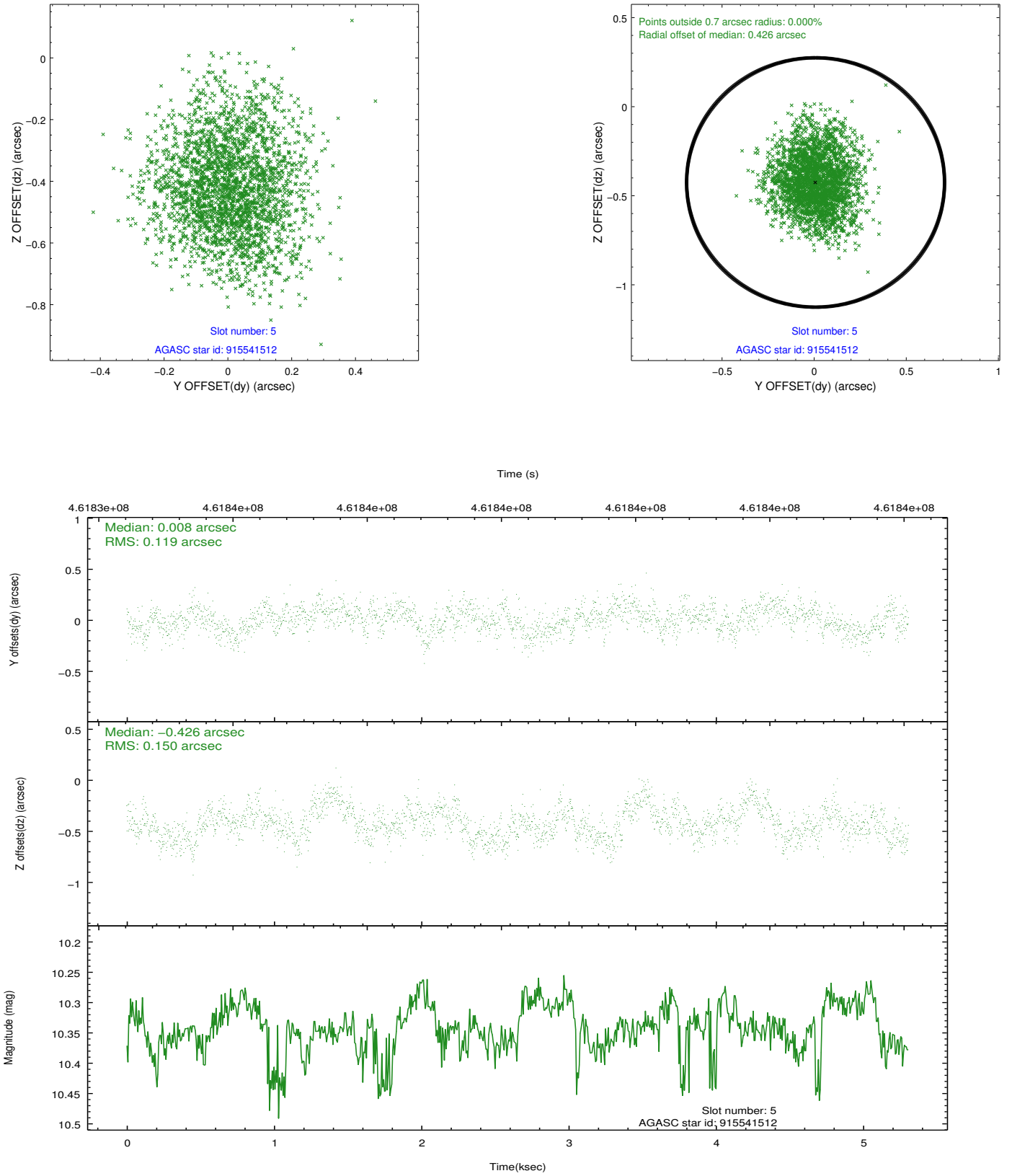
2.4.1 Slot 3



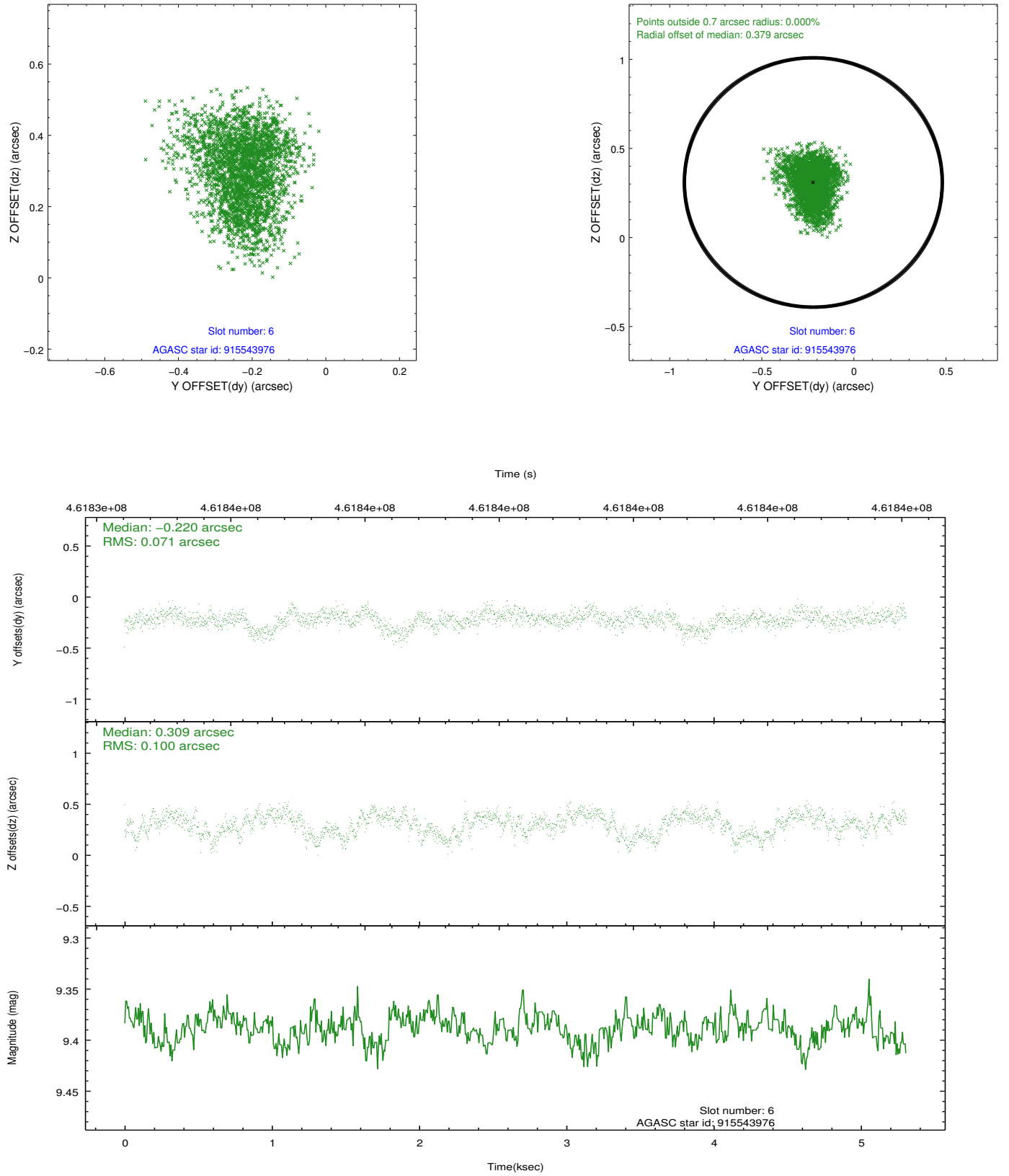
2.4.2 Slot 4



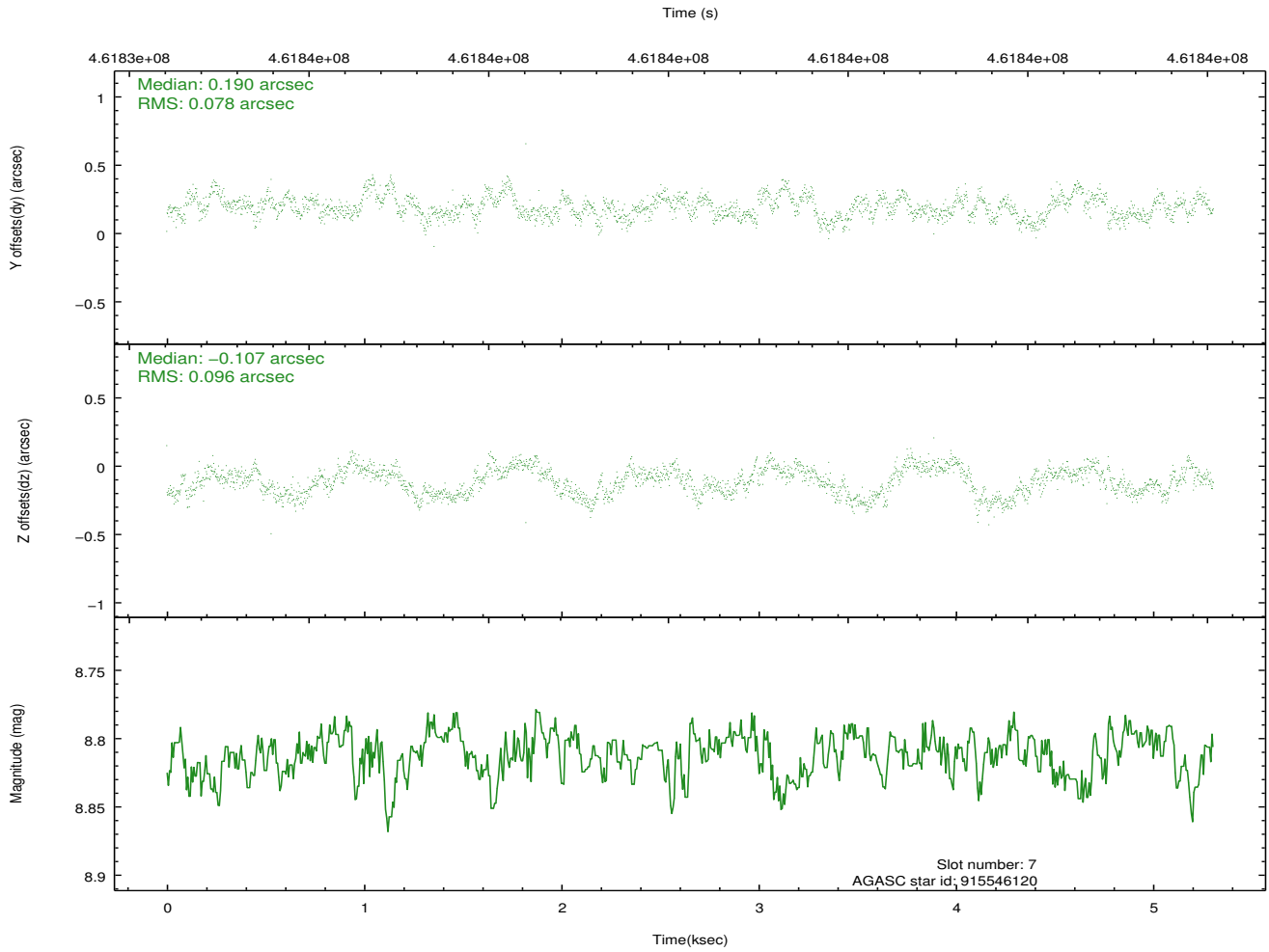
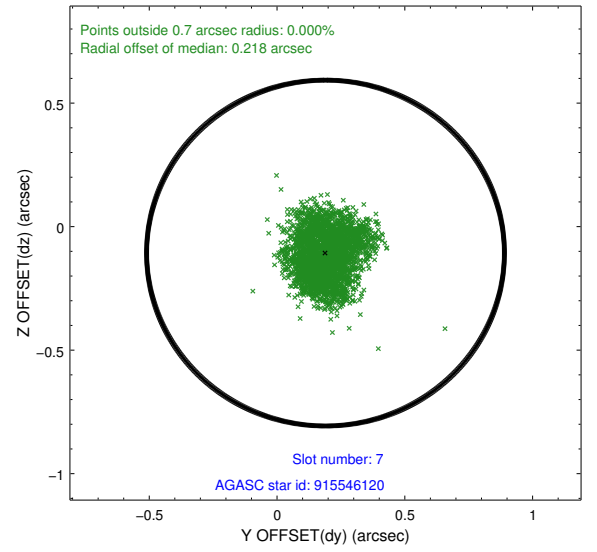
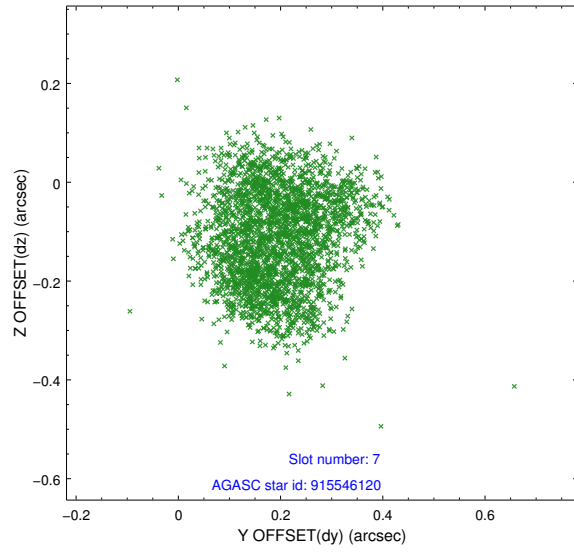
2.4.3 Slot 5



2.4.4 Slot 6

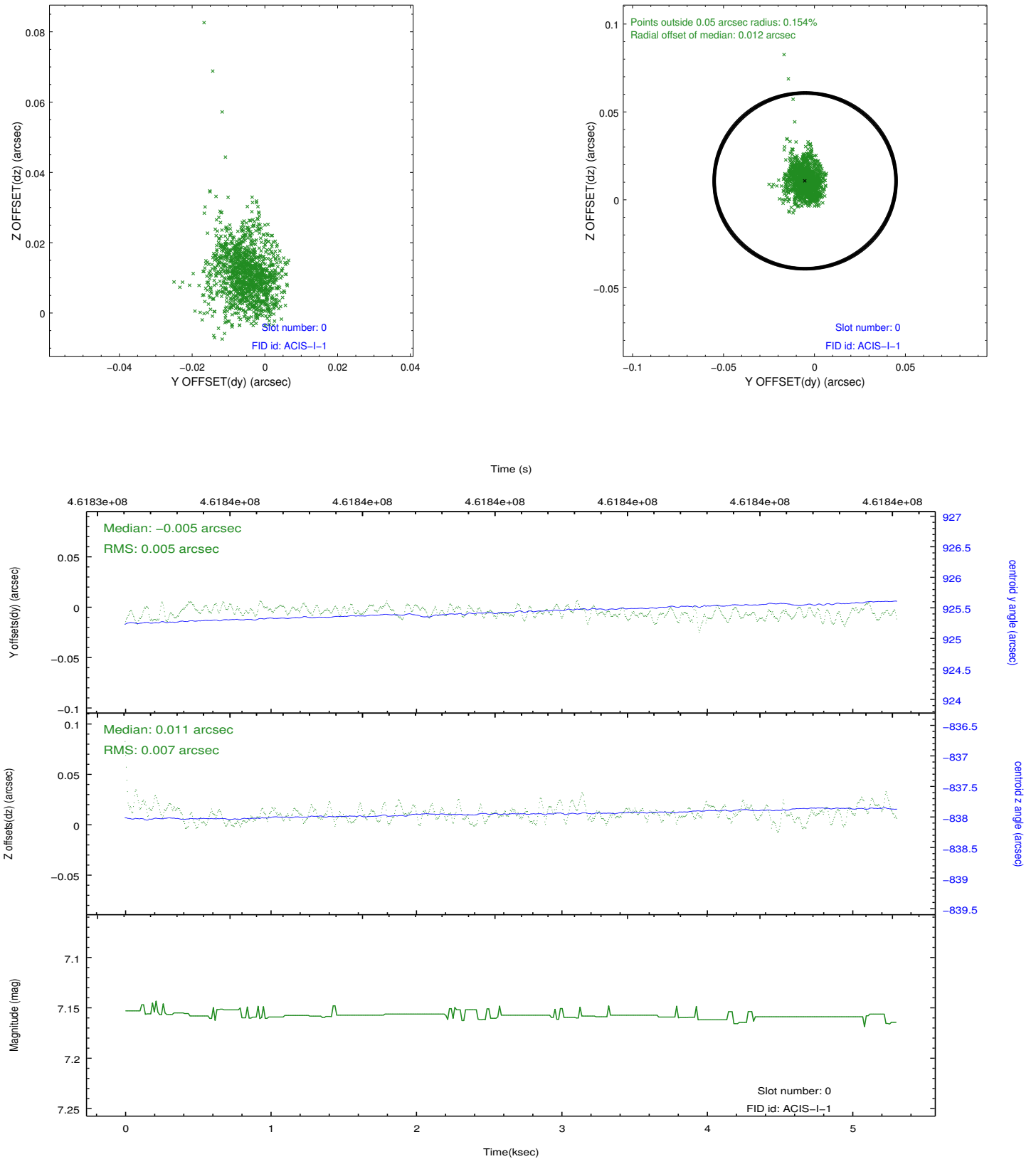


2.4.5 Slot 7

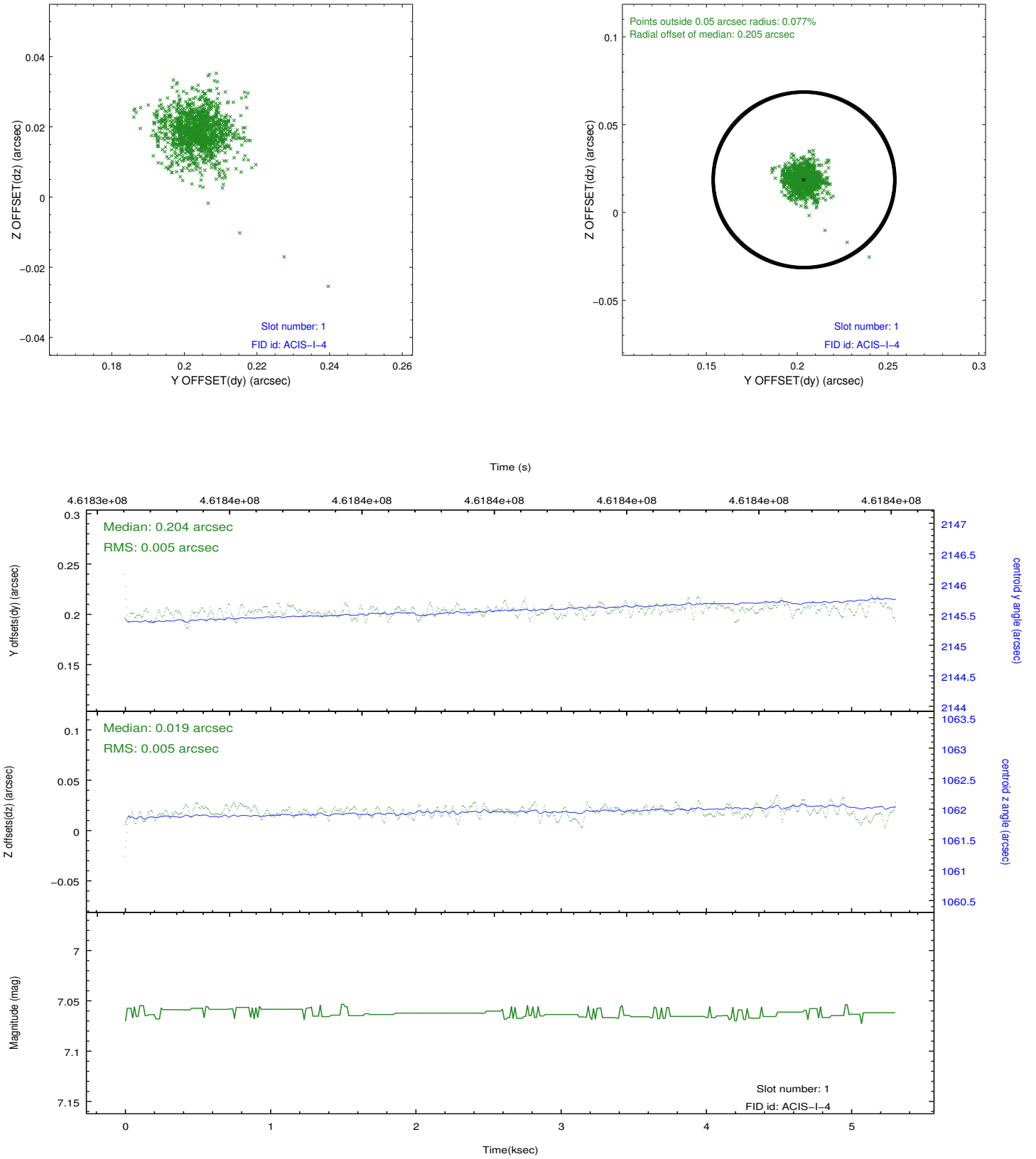


2.5 FID Slots

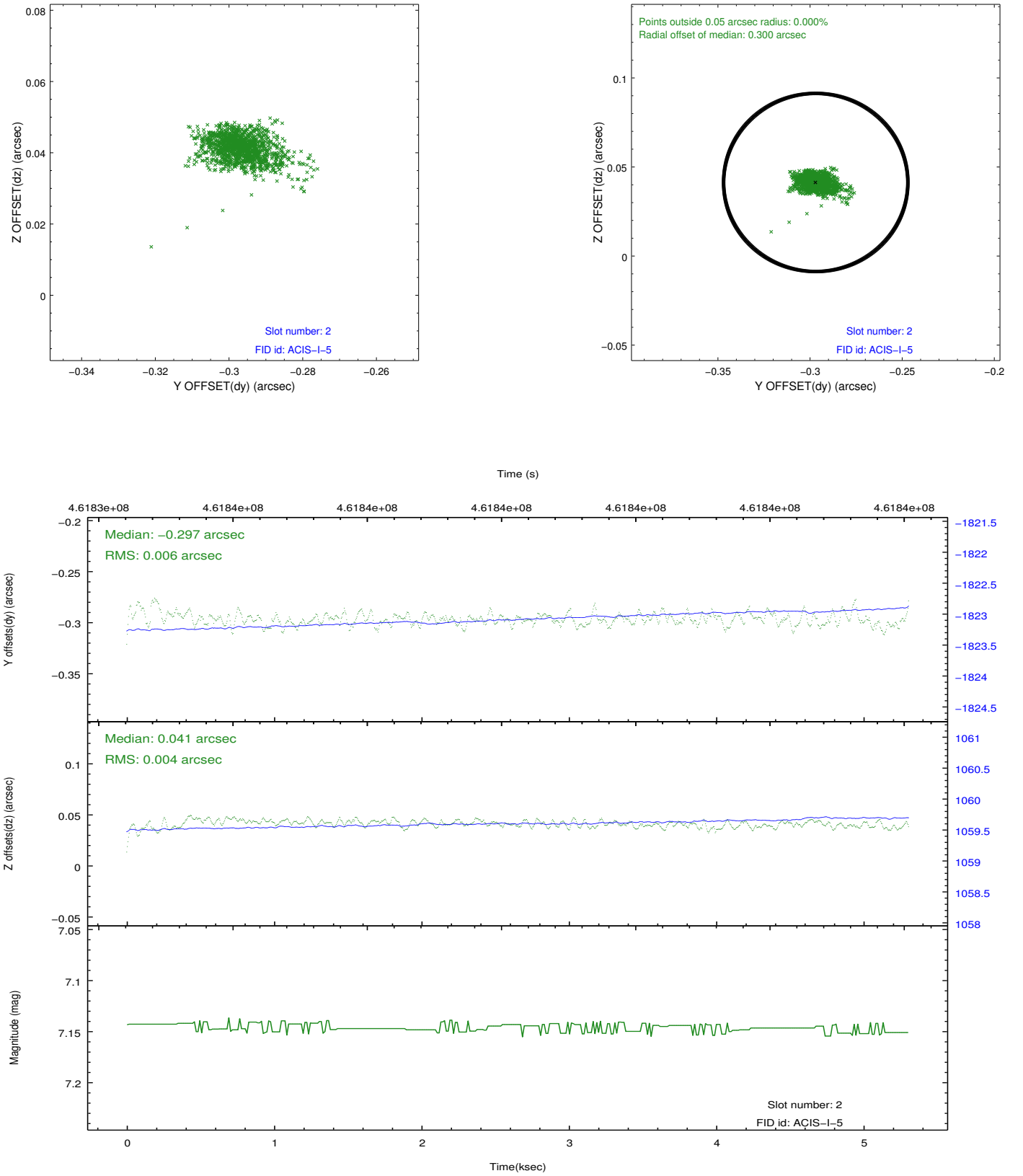
2.5.1 Slot 0



2.5.2 Slot 1



2.5.3 Slot 2



A Summary

A.1 Status

V&V Scientist	Joy Nichols
V&V Date (YYYY-MM-DD)	2012.08.21
V&V Edition	1
V&V Disposition and Status	OK
V&V Charge Time	5.0840000391006

A.2 Comments