

# V&V Reference Report

## L2 ASCDS Version : 8.2.1

Observation 1152 - L2 Version 4

Chandra X-Ray Center

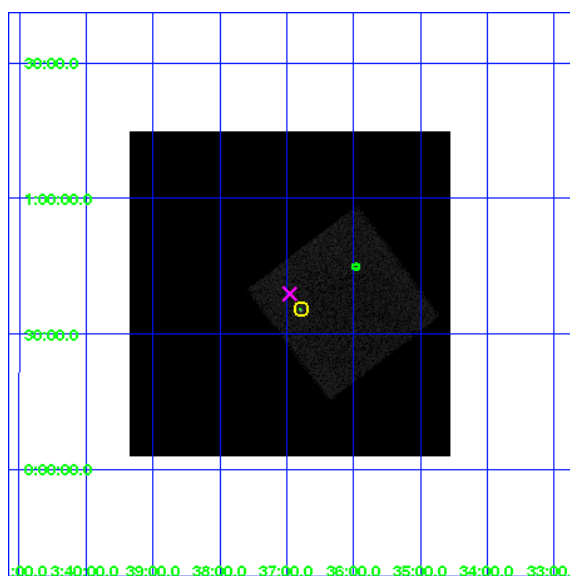
L2 Processing Date : Jan 12 2010

## Contents

<b>1</b>	<b>Front</b>	<b>2</b>
<b>2</b>	<b>OBI</b>	<b>3</b>
2.1	OBI . . . . .	3
2.1.1	Images . . . . .	3
2.1.2	Parameters . . . . .	4
2.1.3	Events . . . . .	4
2.2	Compared Parameters . . . . .	5
2.3	Aspect . . . . .	6
2.4	Star Slots . . . . .	9
2.4.1	Slot 3 . . . . .	9
2.4.2	Slot 4 . . . . .	10
2.4.3	Slot 5 . . . . .	11
2.4.4	Slot 6 . . . . .	12
2.5	FID Slots . . . . .	13
2.5.1	Slot 0 . . . . .	13
2.5.2	Slot 1 . . . . .	14
2.5.3	Slot 2 . . . . .	15
<b>3</b>	<b>Point Sources</b>	<b>16</b>
<b>A</b>	<b>Summary</b>	<b>17</b>
A.1	Status . . . . .	17
A.2	Comments . . . . .	17

# 1 Front

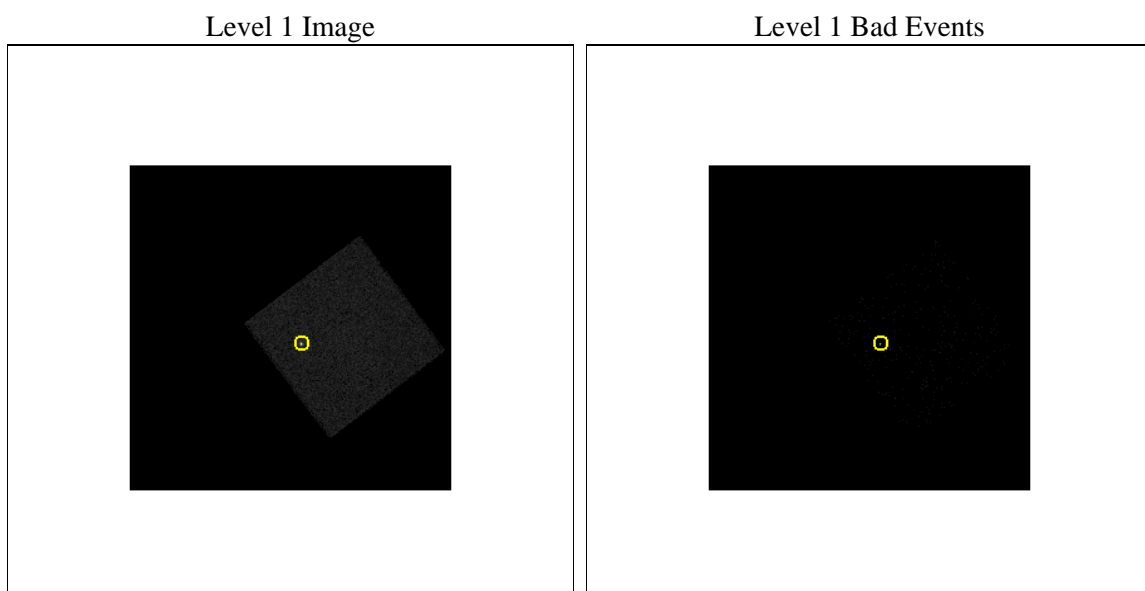
seq_num	280102	Sequence number
obs_id	1152	Observation id
title	&#160	Proposal title
observer	Dr. CXC Calibration	Principal investigator
object	HR1099	Source name
ra_targ	54.197083	Observer's specified target RA
dec_targ	0.589972	Observer's specified target Dec
ra_nom	54.237905835369	Nominal RA
dec_nom	0.64843786631064	Nominal Dec
roll_nom	98.037945042249	Nominal Roll
revision	4	Processing version of data
ontime	795.65627856553	[s]
livetime	785.83058673101	Ontime multiplied by DTCOR
l2events	49301	Number of level 2 events



## 2 OBI

### 2.1 OBI

#### 2.1.1 Images



### 2.1.2 Parameters

obi_num	0	Obi number	sched_exp_time	1000.000000	Scheduled observation exposure time
ascdsver	8.2.1	Processing system revision	ontime	795.65627856553	[s]
caldbver	4.1.5	&#160	l1events	76110	Number of level 1 events
date	2010-01-13T00:33:21	Date and time of file creation			
revision	4	Processing version of data			

### 2.1.3 Events

#### Level 1 Events

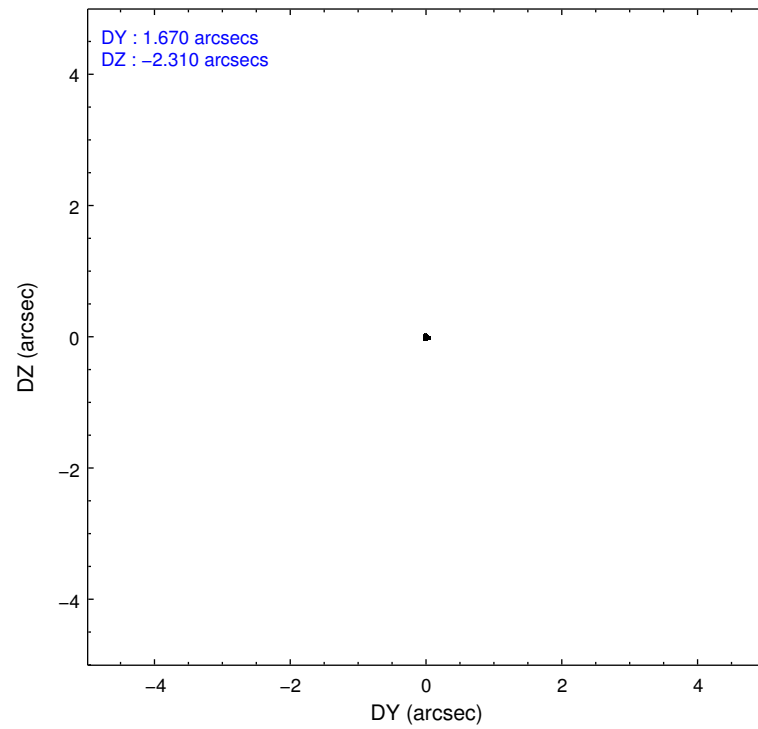
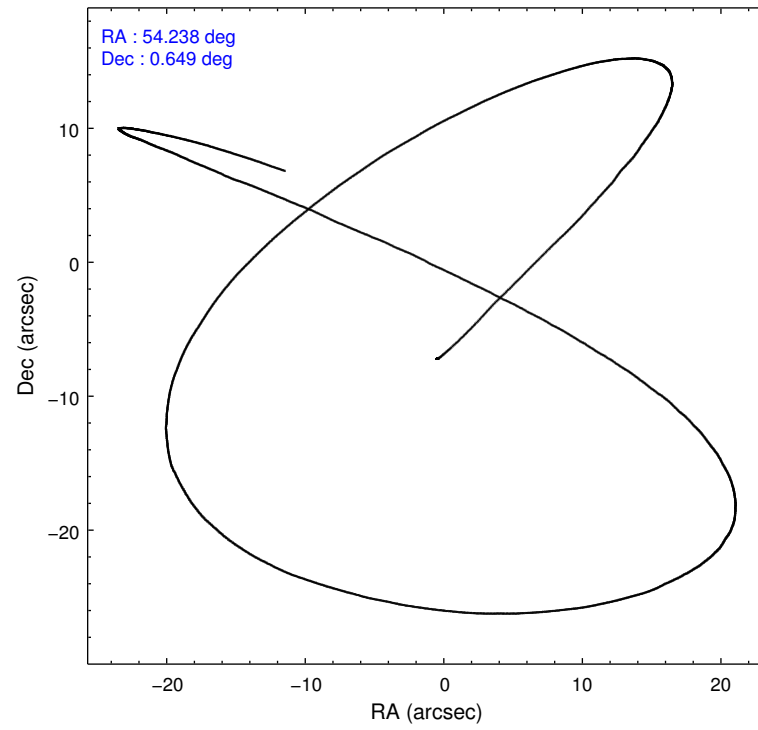
	<b>segment 0</b>
level 1 events	76110
rejected events	4069
rejected %	5%

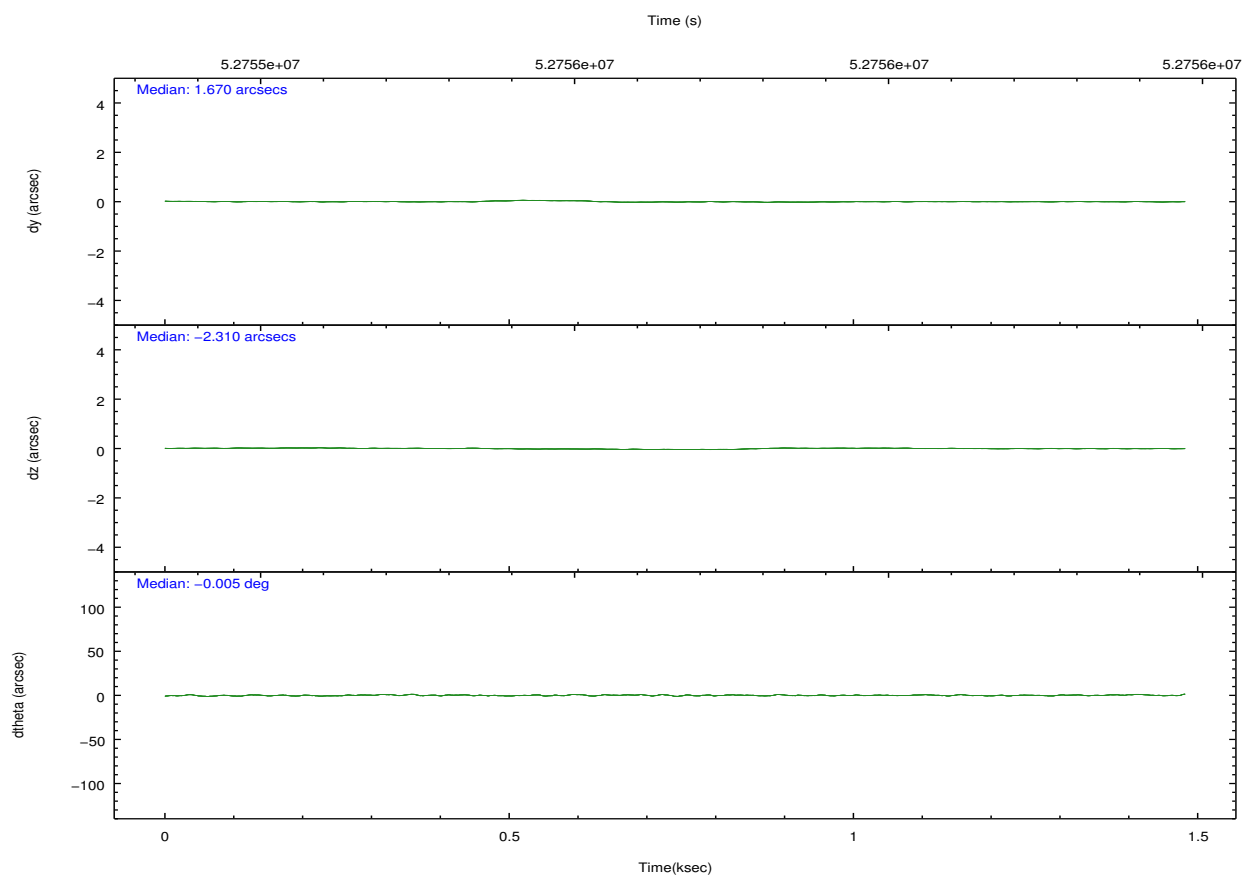
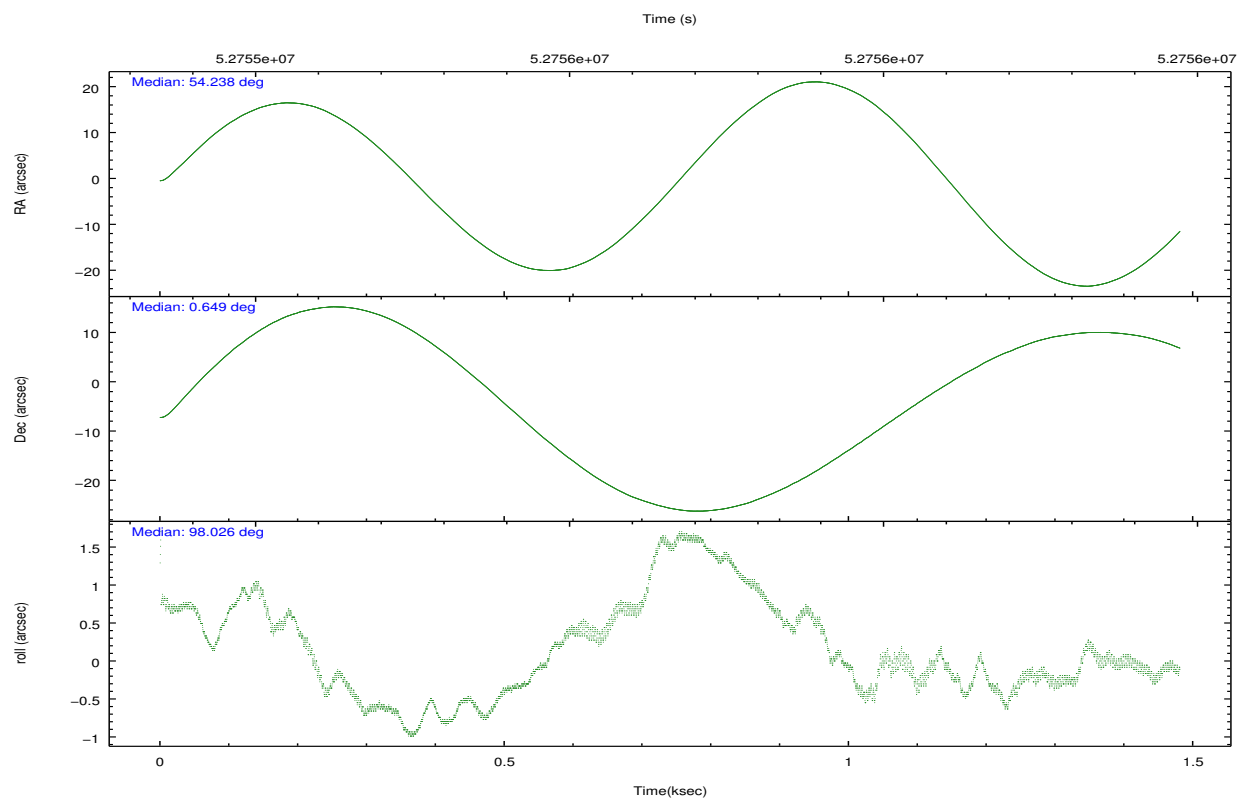
## 2.2 Compared Parameters

Parameter	Planned	Actual
Instrument	HRC	HRC
Detector	HRC-I	HRC-I
Grating	NONE	NONE
Data mode	OBSERVING	OBSERVING
Observation mode	POINTING	POINTING
Pointing RA	54.254928	54.23790583536867
Pointing Dec	0.625851	0.6484378663106356
Pointing Roll	98.133248	98.03794504224852
SIM focus pos (mm)	-1.040293	-1.300001029371461
SIM defocus (mm)	0	-0.259708408712586
SIM translation stage pos (mm)	91.869942	91.86553817309772
SIM translation stage offset (mm)	35.115552	35.11995071850384
Observation start time	52755402.184000	52754735.495356
Observation start date	1999-09-03T14:15:38	1999-09-03T14:05:35
Observation end time	52756402.184000	52757292.357948
Observation end date	1999-09-03T14:32:18	1999-09-03T14:48:12

Parameter	Planned	Actual
Obspar format version number	6	6
Obspar file type	PREDICTED	ACTUAL
Obspar update status	NONE	UPDATED

## 2.3 Aspect





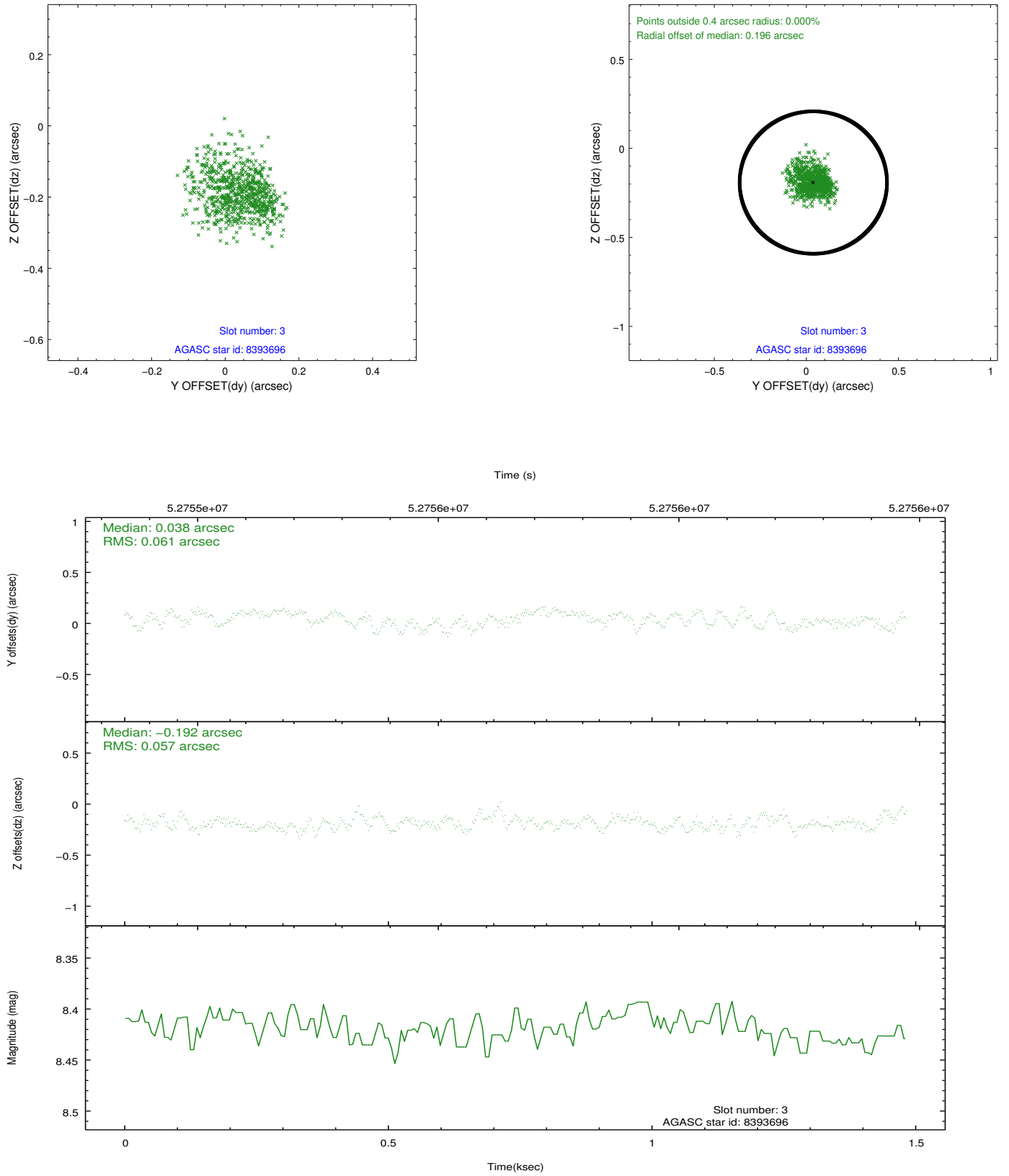
Slot Statistics

slot	status	id	mag	n_pts	med_dy	med_dz	dr1	dr2	ra	dec	mean_y	mean_z
0	FID	HRC-I-1	6.94	724	-0.262	-0.128	0.006	0.012	0.000000	0.000000	-755.82	-567.39
1	FID	HRC-I-3	7.01	724	0.251	-0.228	0.007	0.012	0.000000	0.000000	-1187.44	1739.94
2	FID	HRC-I-4	6.87	724	0.126	0.264	0.005	0.008	0.000000	0.000000	1283.06	1741.83
3	GUIDE	8393696	8.42	724	0.038	-0.192	0.089	0.144	53.645666	0.680479	500.38	2142.35
4	GUIDE	8390744	9.02	724	-0.027	-0.139	0.083	0.136	53.677290	0.926294	1360.99	1907.56
5	GUIDE	8395104	8.66	724	0.032	0.187	0.076	0.120	54.744893	0.796520	356.76	-1830.85
6	GUIDE	8397624	9.54	720	-0.047	0.139	0.112	0.175	54.812881	1.297049	2104.71	-2332.71
7	UNUSED		0.00	0	0.000	0.000	0.000	0.000	0.000000	0.000000	0.00	0.00

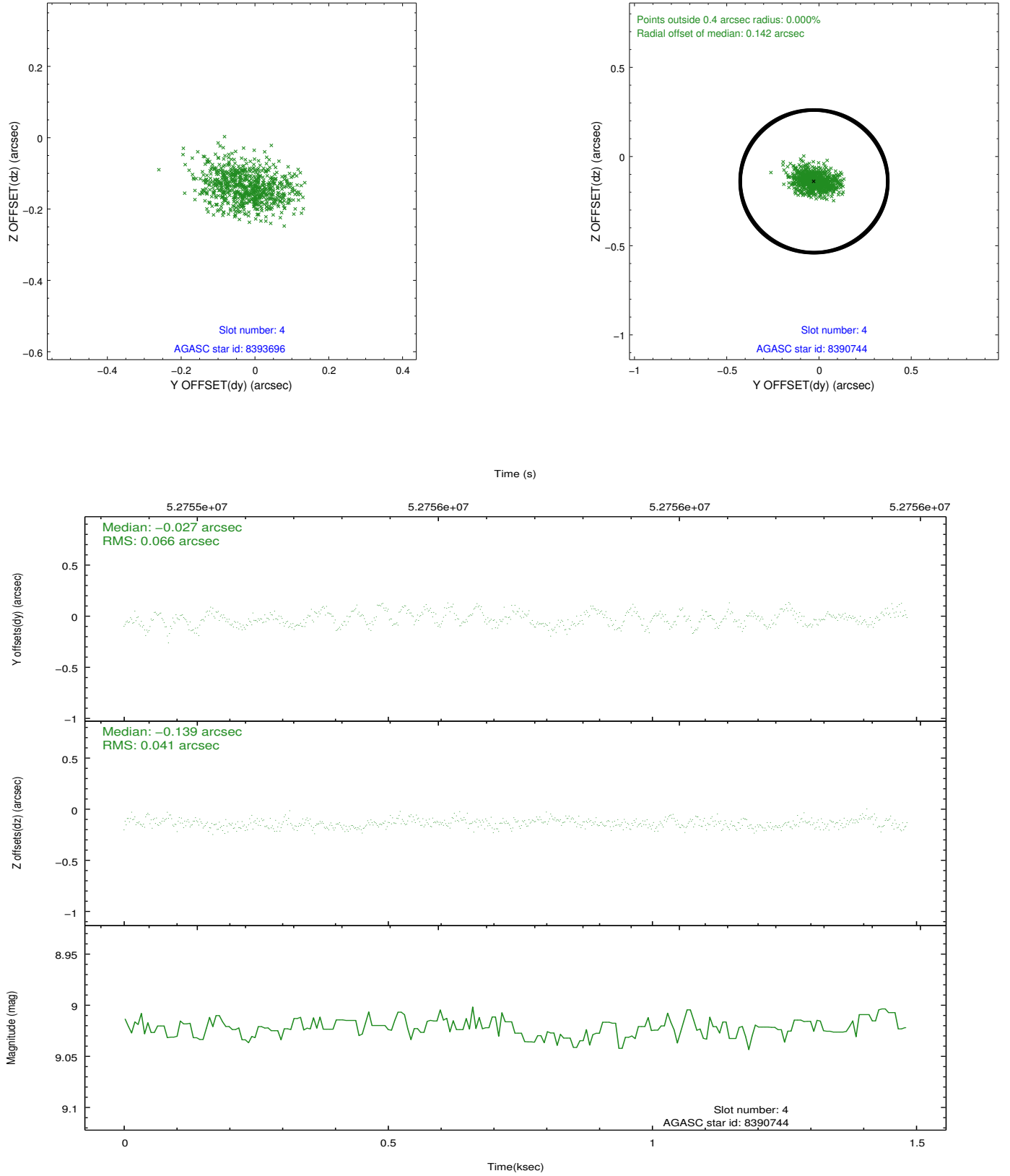


## 2.4 Star Slots

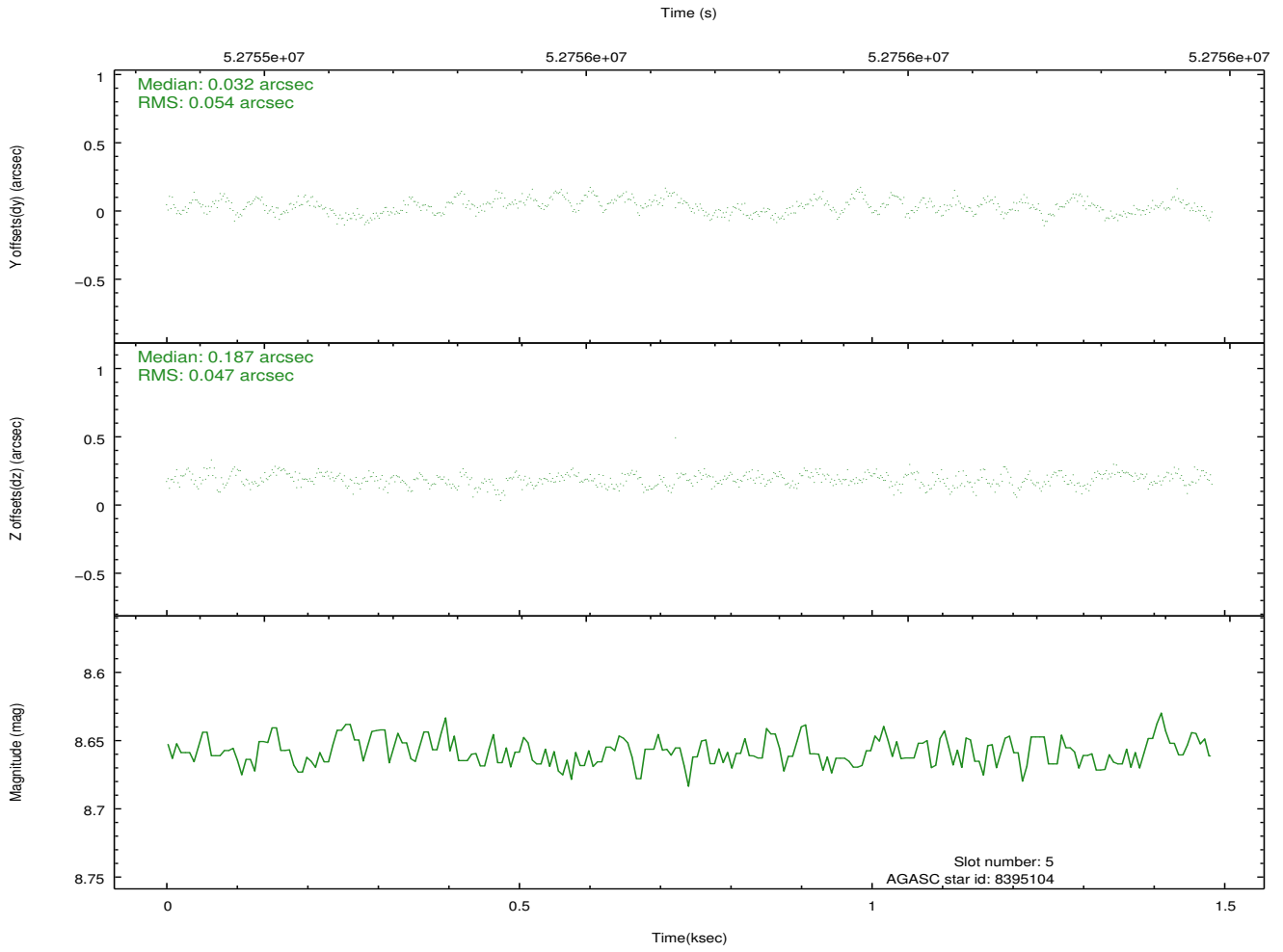
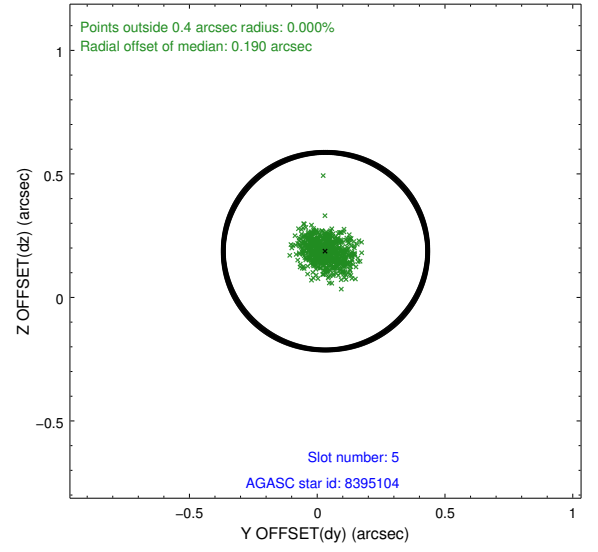
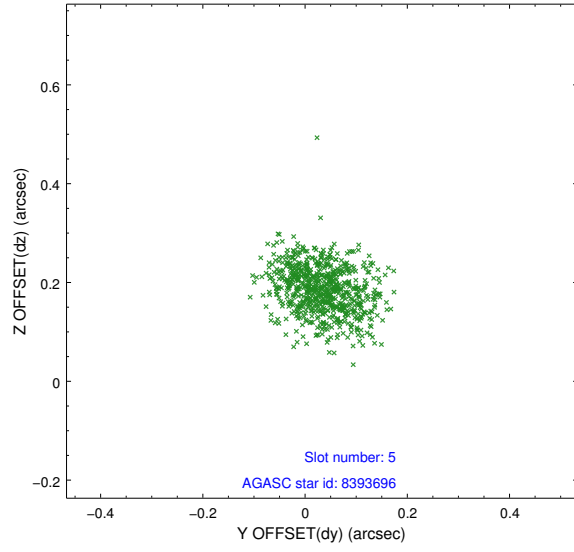
### 2.4.1 Slot 3



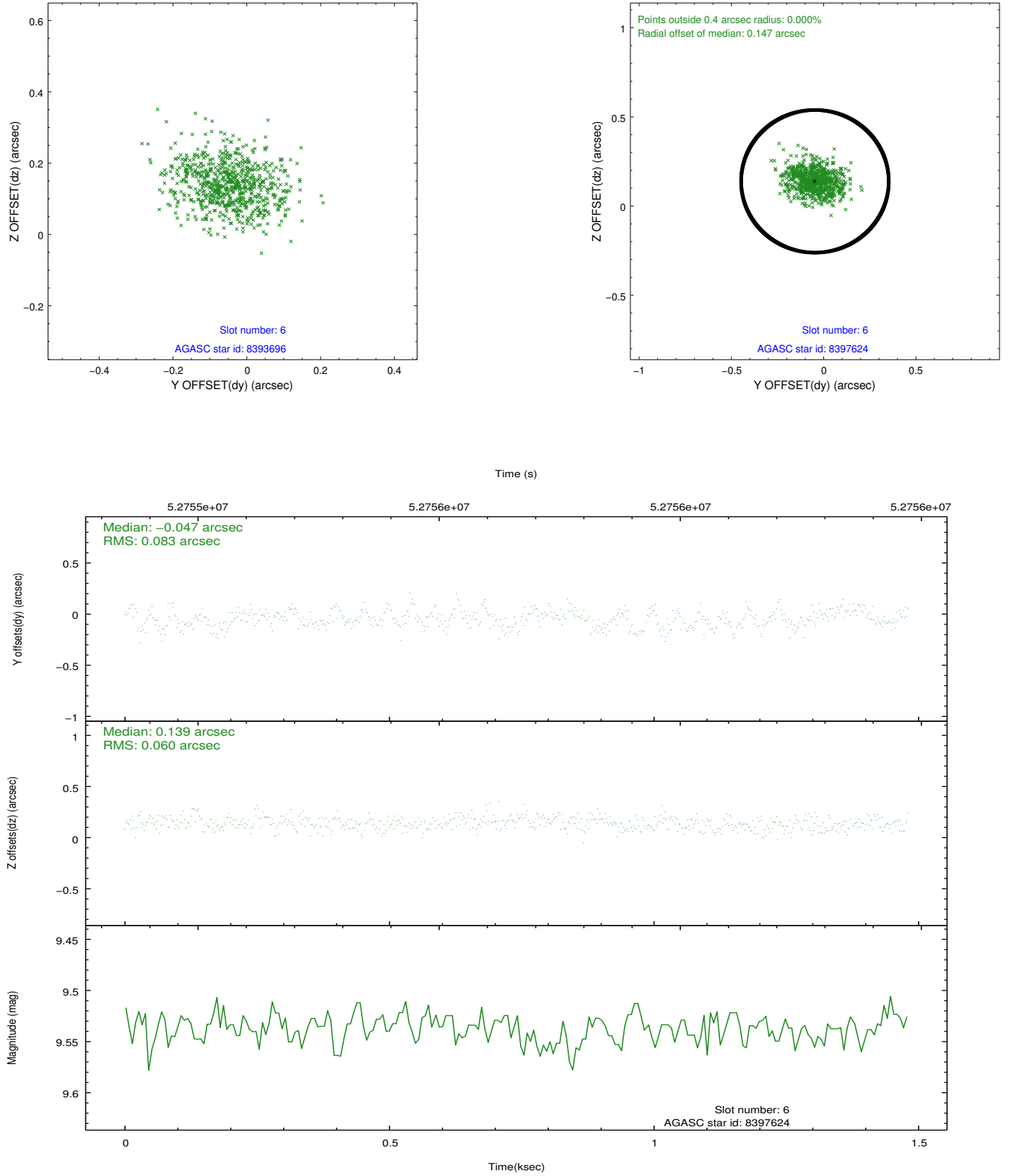
## 2.4.2 Slot 4



### 2.4.3 Slot 5

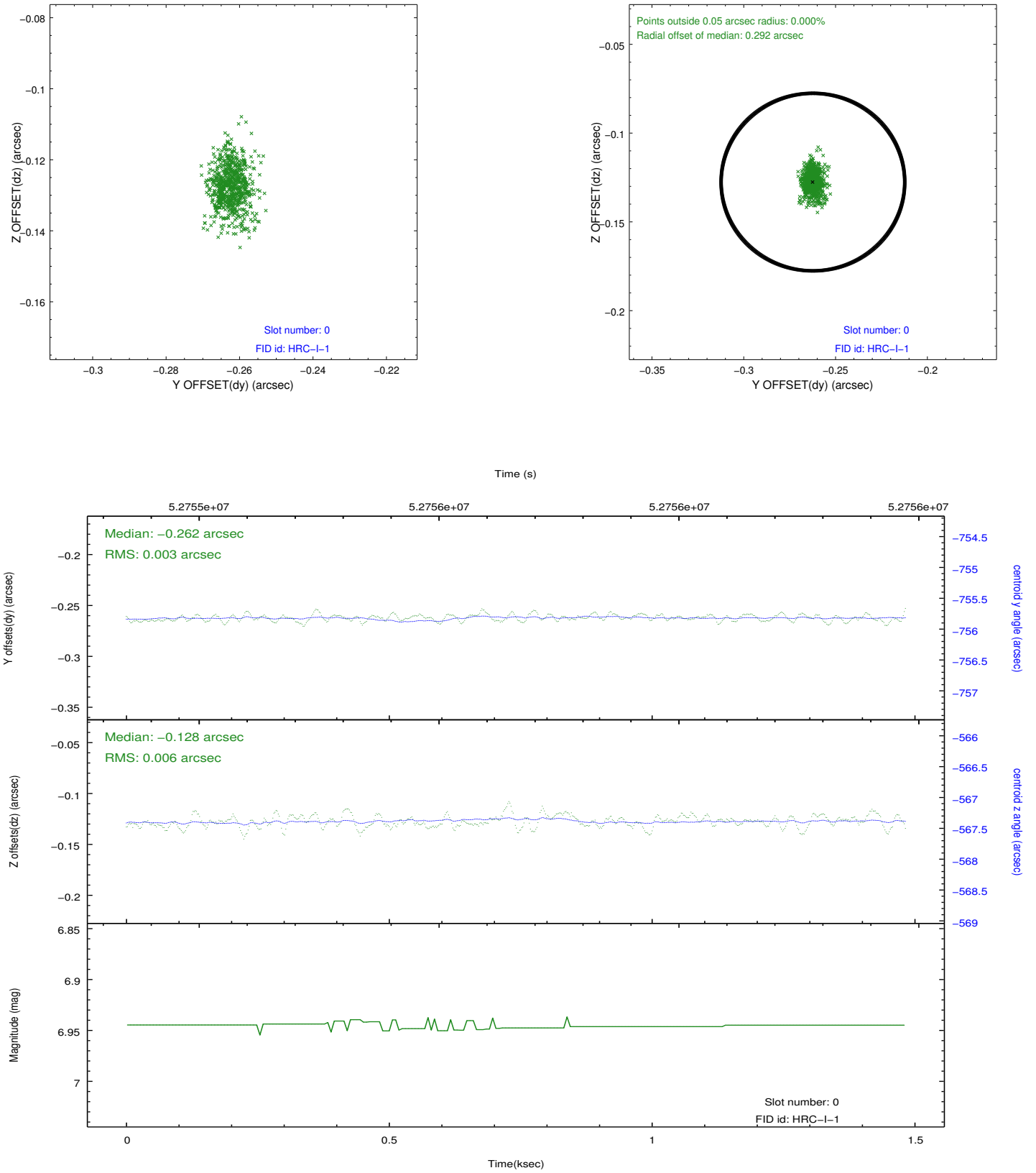


## 2.4.4 Slot 6

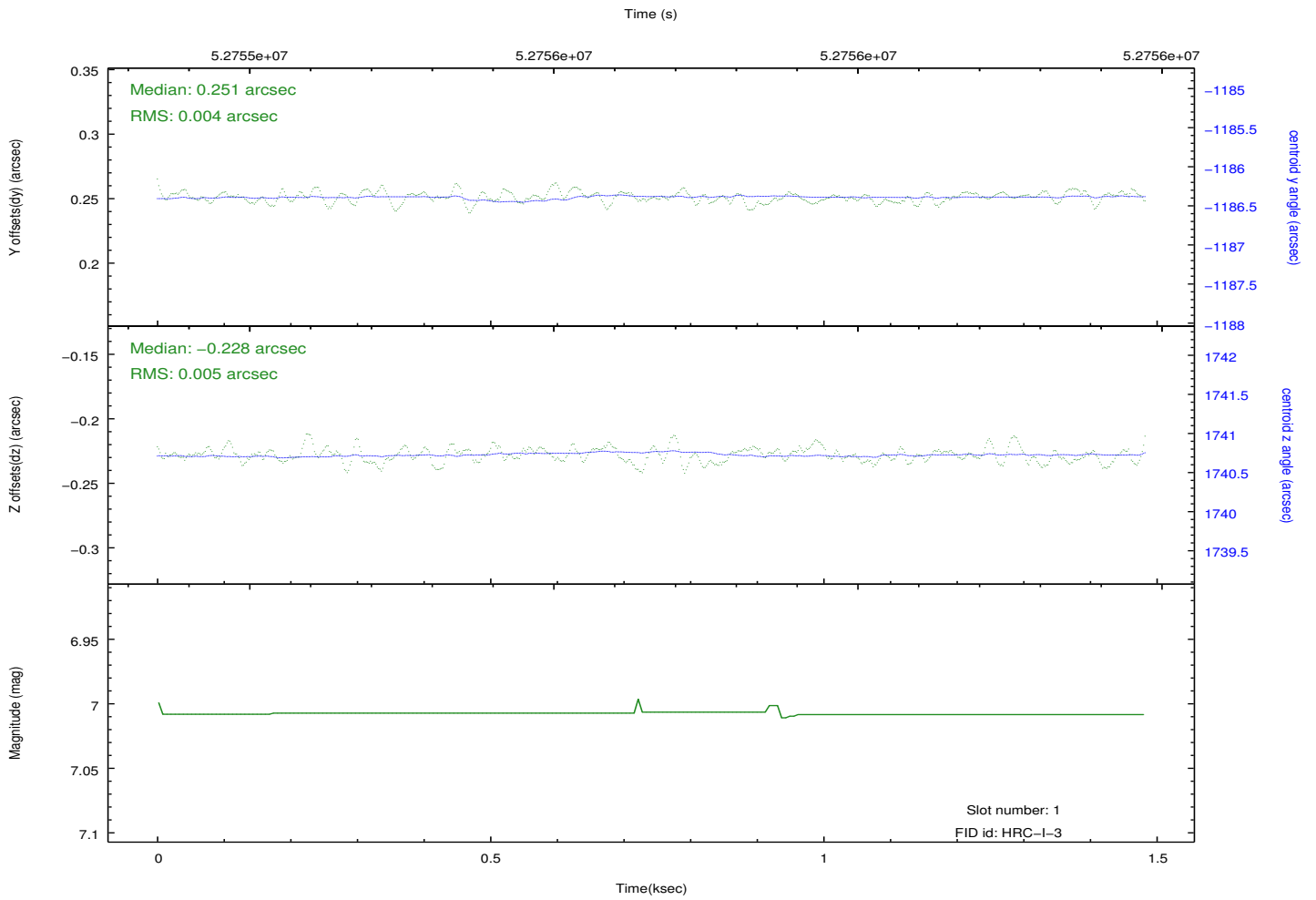
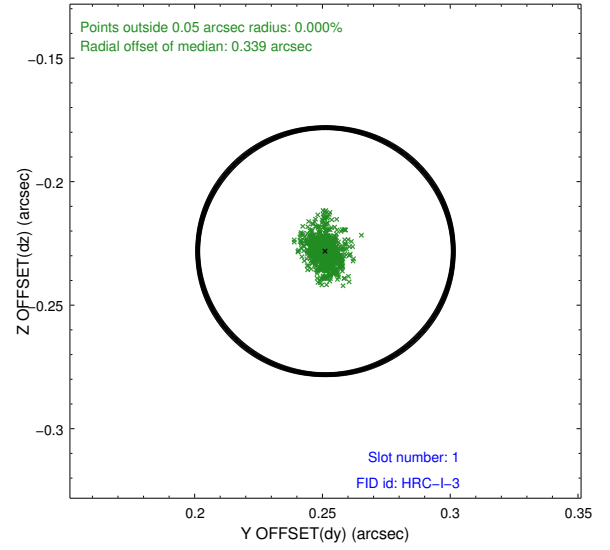
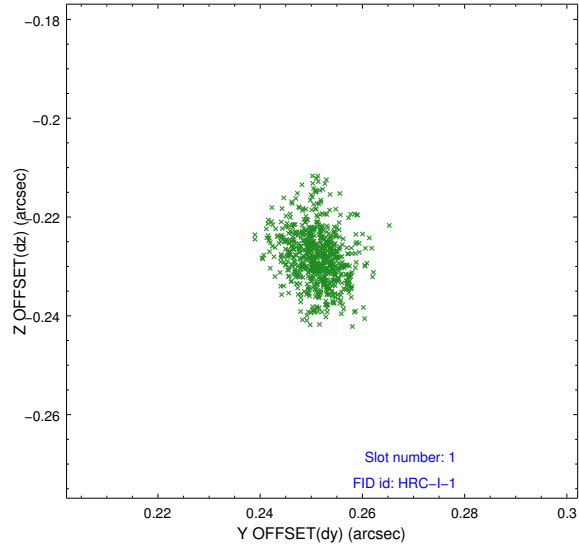


## 2.5 FID Slots

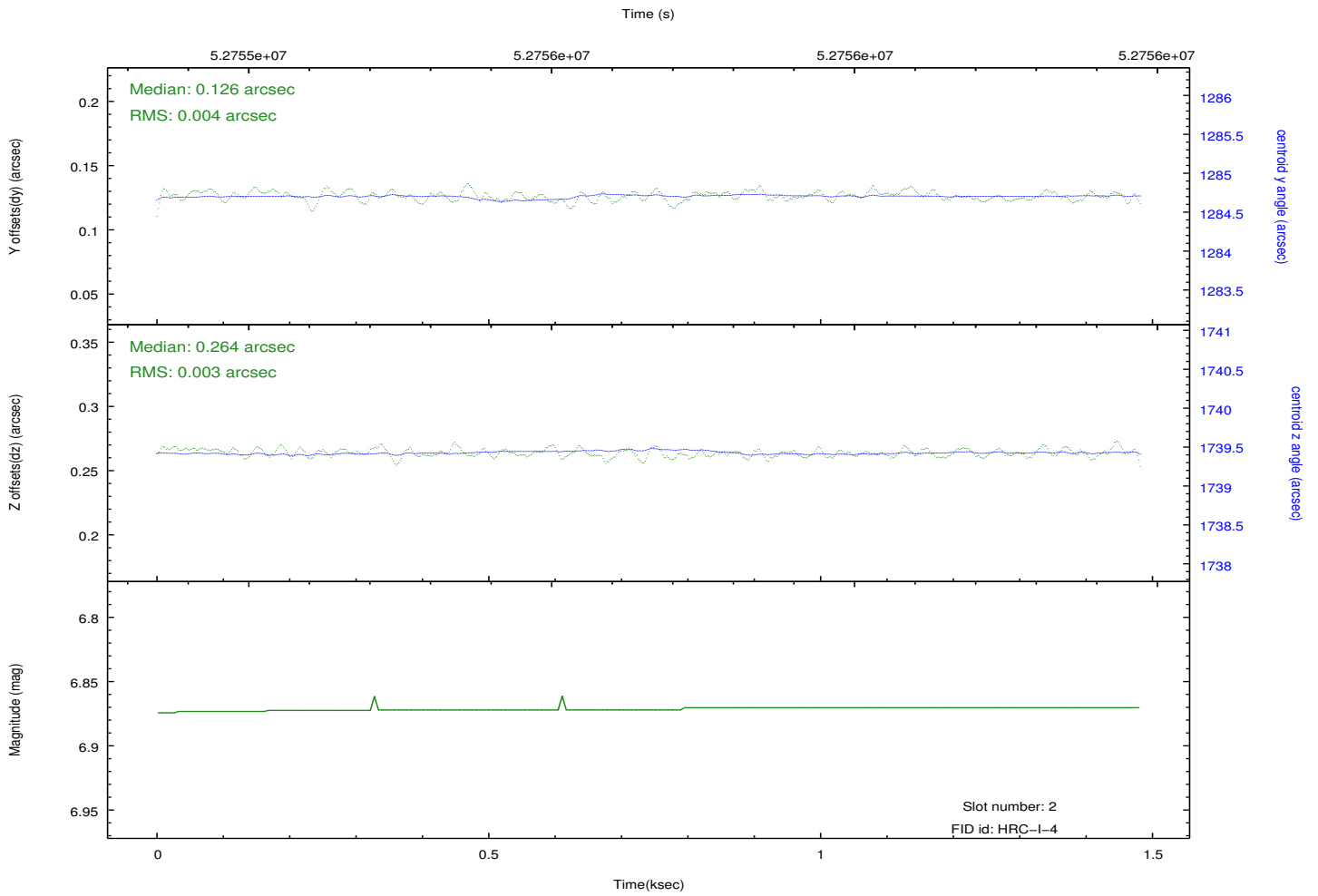
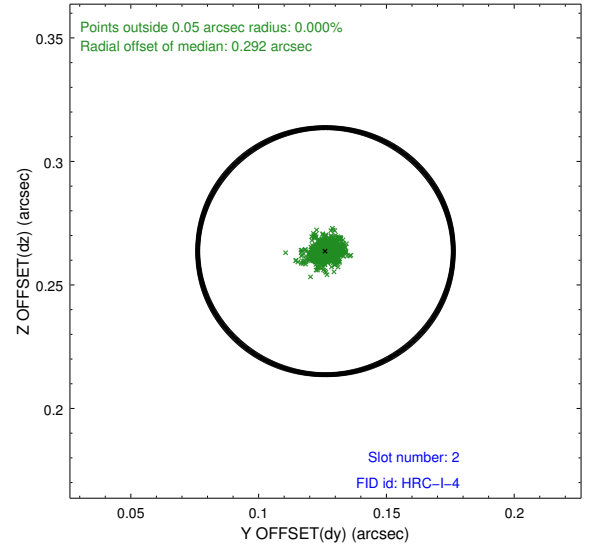
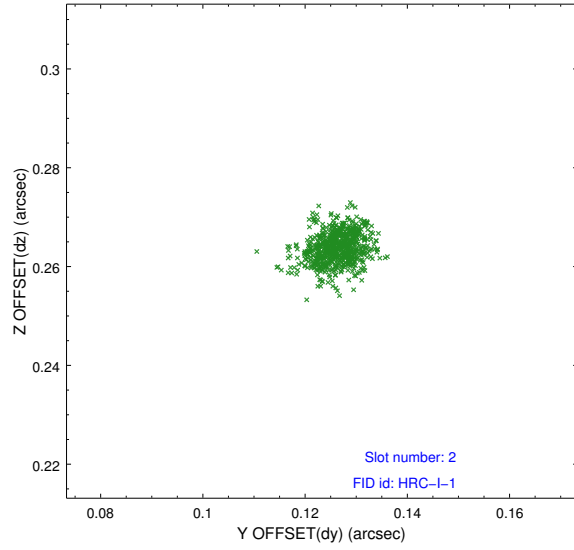
### 2.5.1 Slot 0



## 2.5.2 Slot 1

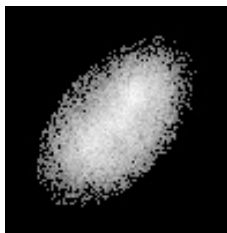


## 2.5.3 Slot 2



### 3 Point Sources

4.38 arcmin



16.06 arcmin





# A Summary

## A.1 Status

V&V Scientist	Joy Nichols
V&V Date (YYYY-MM-DD)	2010.02.02
V&V Edition	1
V&V Disposition and Status	OK
V&V Charge Time	0.795

## A.2 Comments

HRC-I Optical Axis determination. SIMBAD coordinates for this object are ra = 03:36:47.2895, dec = +00:35:15.928. Observer requested coordinates ra = 03:36:47, dec = +00:35:23.90.30. Target was intended to be off-axis for calibration purposes, but it is not at the intended position on the chip due to the observer's error in the coordinates.

===

The guide star in slot 7 was not utilized in this observation.