

V&V Reference Report

L2 ASCDS Version : 8.4.4

Observation 10862 - L2 Version 2
Chandra X-Ray Center

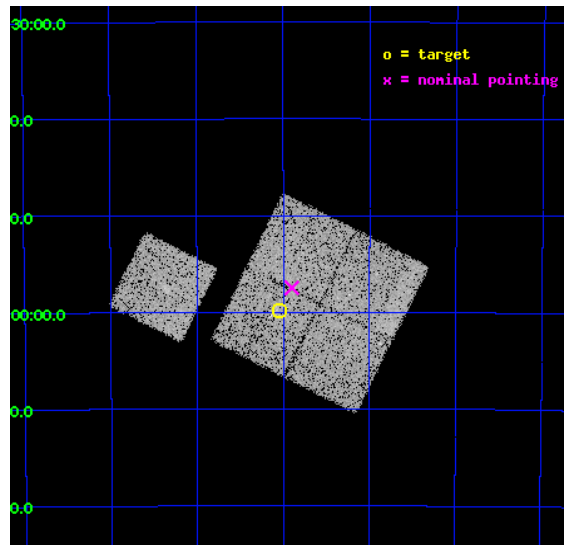
L2 Processing Date : May 30 2012

Contents

1	Front	2
2	OBI	3
2.1	OBI	3
2.1.1	Images	3
2.1.2	Bias	3
2.1.3	Parameters	4
2.1.4	Events	4
2.2	Compared Parameters	5
2.3	Aspect	6
2.4	Star Slots	9
2.4.1	Slot 3	9
2.4.2	Slot 4	10
2.4.3	Slot 5	11
2.4.4	Slot 6	12
2.4.5	Slot 7	13
2.5	FID Slots	14
2.5.1	Slot 0	14
2.5.2	Slot 1	15
2.5.3	Slot 2	16
A	Summary	17
A.1	Status	17
A.2	Comments	17

1 Front

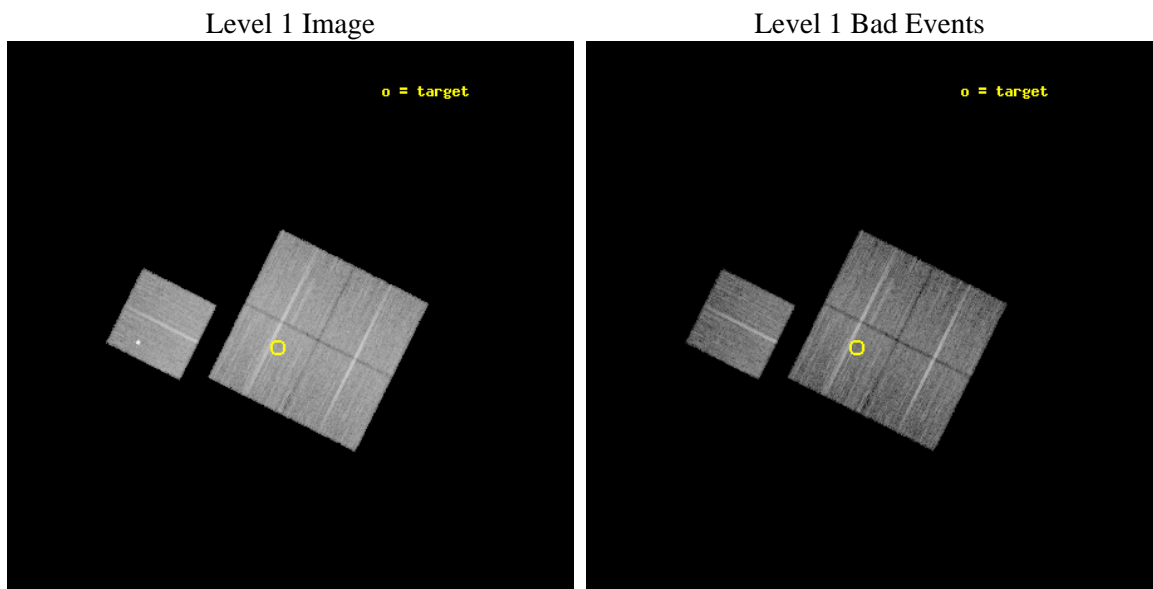
seq_num	800678	Sequence number
obs_id	10862	Observation id
title	South Pole Telescope (SPT) - Chandra Cluster Cosmology	Proposal ti
observer	Dr. Stephen Murray	Principal investigator
object	SPT-CL 0528-5300	Source name
dtcycle	0	
cycle	P	events from which exps? Prim/Second/Both
ra_targ	82.011	Observer's specified target RA [deg]
dec_targ	-52.998	Observer's specified target Dec [deg]
ra_nom	81.974832468635	Nominal RA [deg]
dec_nom	-52.957904357061	Nominal Dec [deg]
roll_nom	296.57033588886	Nominal Roll [deg]
revision	2	Processing version of data
ontime	12772.000098228	Sum of GTIs [s]
livetime	12605.124514335	Livetime [s]
ontime0	12772.000098228	Sum of GTIs [s]
ontime1	12768.859117866	Sum of GTIs [s]
ontime2	12772.000098228	Sum of GTIs [s]
ontime3	12772.000098228	Sum of GTIs [s]
ontime6	12772.000098228	Sum of GTIs [s]
l2events	46836	Number of level 2 events



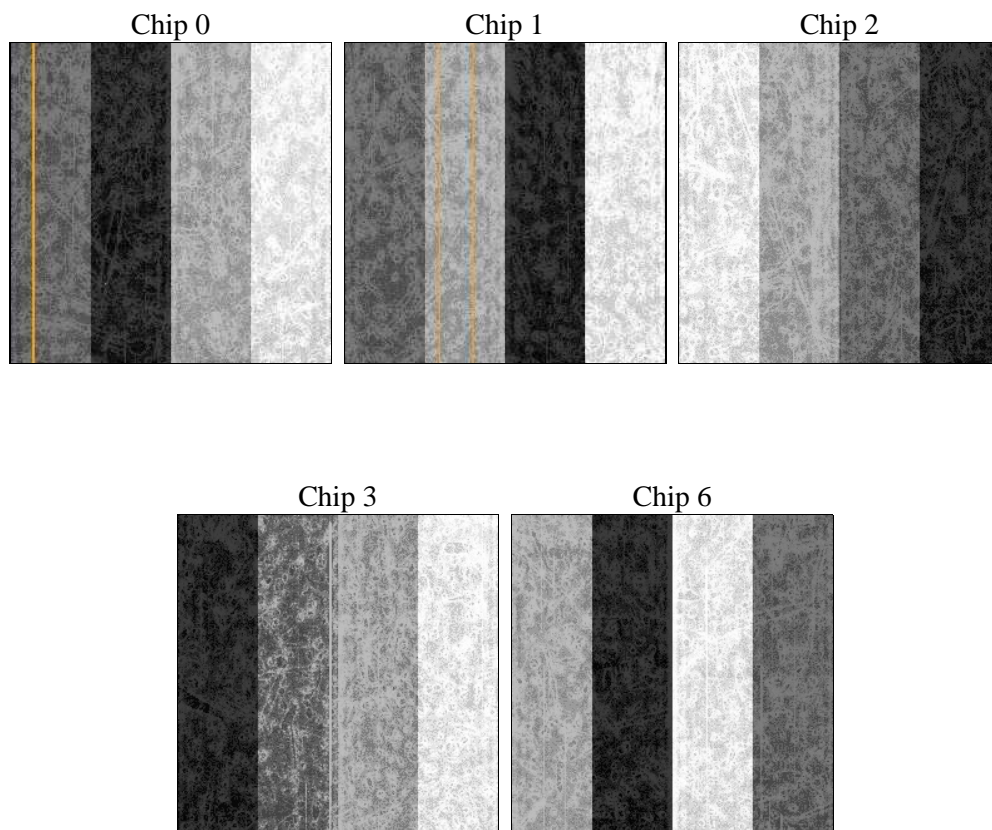
2 OBI

2.1 OBI

2.1.1 Images



2.1.2 Bias



2.1.3 Parameters

obi_num	0	Obi number	sched_exp_time	13000.000000	[s] Scheduled observation exposure time
ascdsver	8.4.4	Processing system revision	ontime	12772.000098228	Sum of GTIs [s]
caldsver	4.4.9	 	ontime0	12772.000098228	Sum of GTIs [s]
date	2012-05-30T23:44:56	Date and time of file creation	ontime1	12768.859117866	Sum of GTIs [s]
revision	2	Processing version of data	ontime2	12772.000098228	Sum of GTIs [s]
			ontime3	12772.000098228	Sum of GTIs [s]
			ontime6	12772.000098228	Sum of GTIs [s]
			l1events	535392	Number of level 1 events

2.1.4 Events

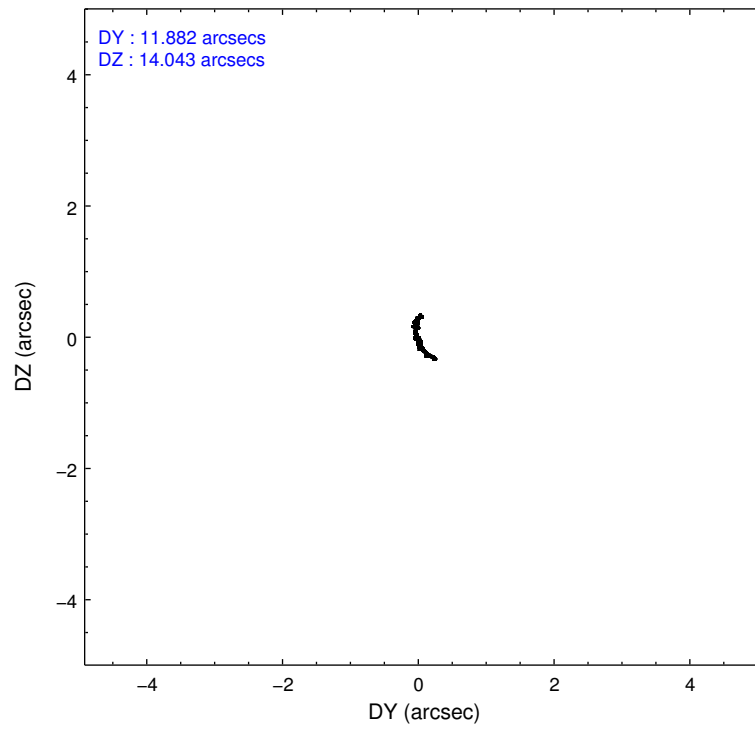
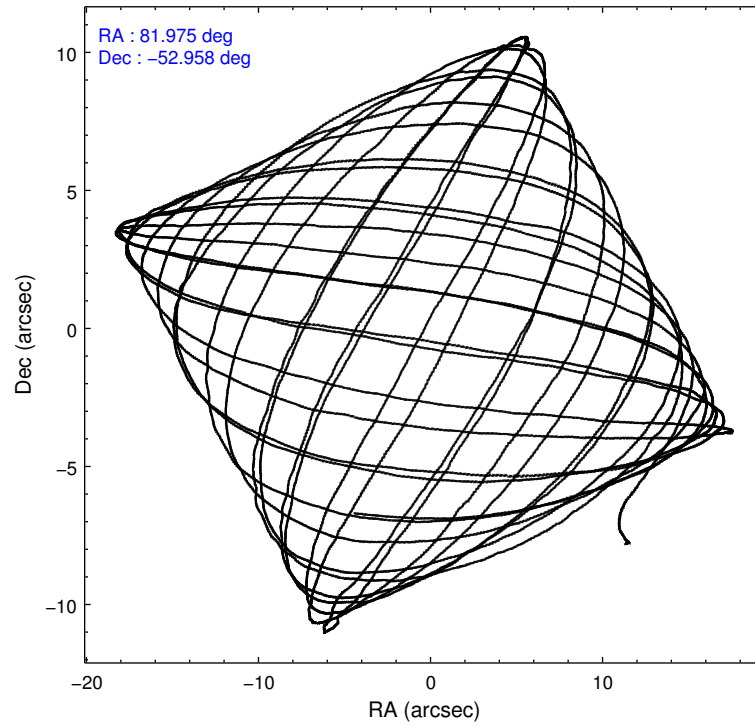
	ccd 0	ccd 1	ccd 2	ccd 3	ccd 6
level 1 events	98534	101888	115109	107211	112650
rejected events	87547	89532	103970	96710	97408
rejected %	88%	87%	90%	90%	86%

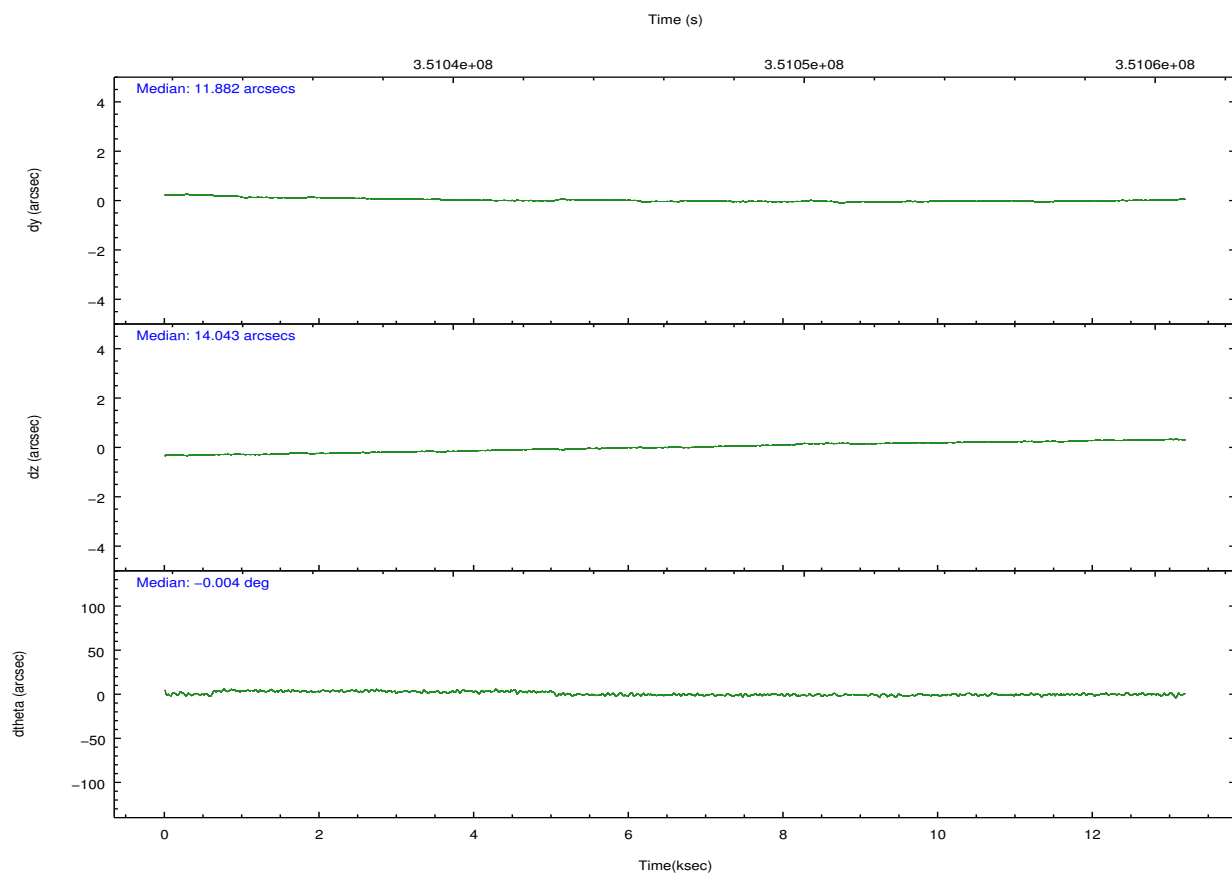
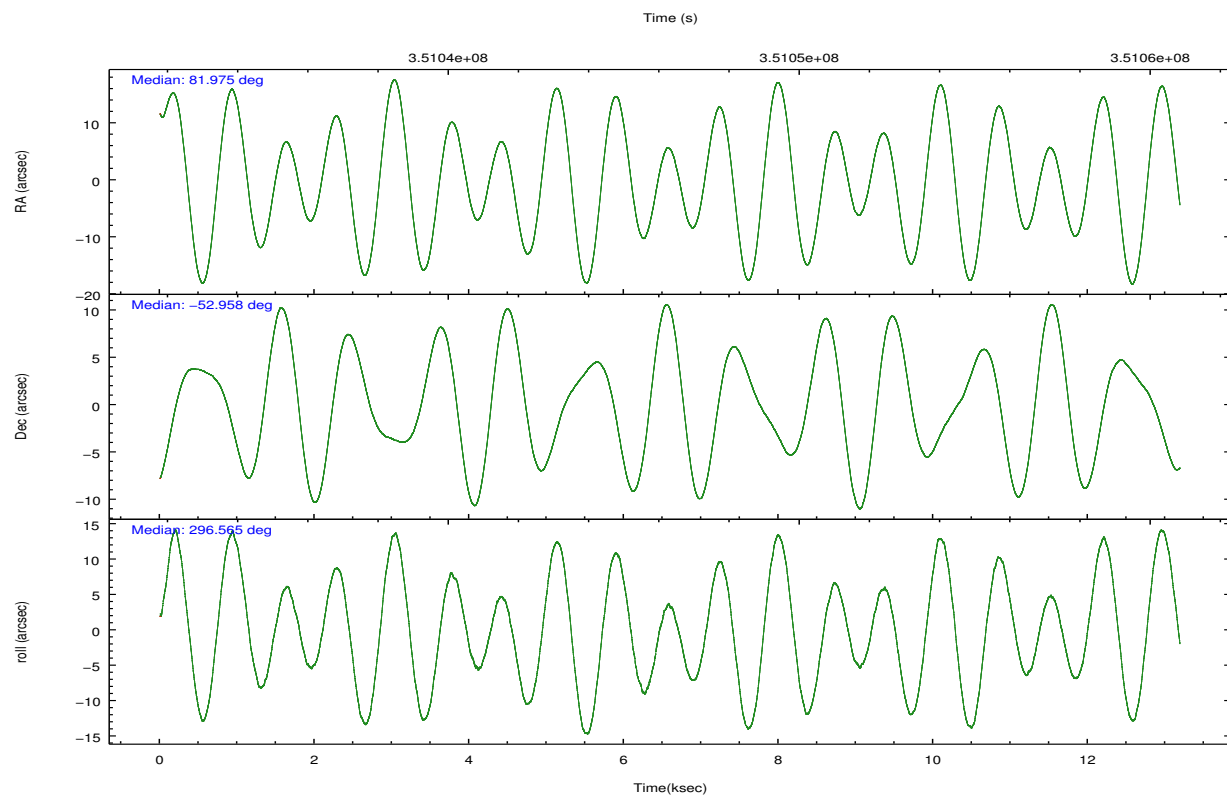
	ccd 0	ccd 1	ccd 2	ccd 3	ccd 6
grade 0 events	3798	4450	4055	3664	7842
	3%	4%	3%	3%	6%
grade 1 events	57	48	79	72	86
	0%	0%	0%	0%	0%
grade 2 events	2670	2841	2633	2338	2505
	2%	2%	2%	2%	2%
grade 3 events	1272	1332	1099	1171	1310
	1%	1%	0%	1%	1%
grade 4 events	1116	1315	1213	1145	1239
	1%	1%	1%	1%	1%
grade 5 events	3900	4256	3758	4715	4439
	3%	4%	3%	4%	3%
grade 6 events	2134	2423	2141	2184	2349
	2%	2%	1%	2%	2%
grade 7 events	83587	85223	100131	91922	92880
	84%	83%	86%	85%	82%

2.2 Compared Parameters

Parameter	Planned	Actual	Parameter	Planned	Actual
Instrument	ACIS	ACIS	Obspar format version number	7	7
Detector	ACIS-01236	ACIS-01236	Obspar file type	PREDICTED	ACTUAL
Grating	NONE	NONE	Obspar update status	NONE	UPDATED
Data mode	VFAINT	VFAINT	CCD I0 on	Y	Y
Observation mode	POINTING	POINTING	CCD I1 on	Y	Y
[deg] Pointing RA	81.936567	81.97483246863474	CCD I2 on	Y	Y
[deg] Pointing Dec	-52.942833	-52.95790435706051	CCD I3 on	Y	Y
[deg] Pointing Roll	296.331116	296.5703358888633	CCD S0 on	N	N
[mm] SIM focus pos	-0.782348	-0.7809083437167272	CCD S1 on	N	N
[mm] SIM defocus	0	0.001439871863259334	CCD S2 on	O1	Y
[mm] SIM translation stage pos	-225.840463	-225.8458576473255	CCD S3 on	N	N
[mm] SIM translation stage offset	-7.752	-7.746595355604228	CCD S4 on	N	N
[s] Observation start time (MET)	351041766.184000	351040797.8151	CCD S5 on	N	N
Observation start date	2009-02-14T23:35:00	2009-02-14T23:19:57	Number of optional ACIS chips dropped	0	0
[s] Observation end time (MET)	351054766.184000	351055490.16583	On-chip summing requested	N	N
Observation end date	2009-02-15T03:11:40	2009-02-15T03:24:50	Subarray requested	NONE	NONE
Read mode	TIMED	TIMED	Alternating exposures requested	N	N
			[s] Primary exposure time	0.000000	3.1

2.3 Aspect



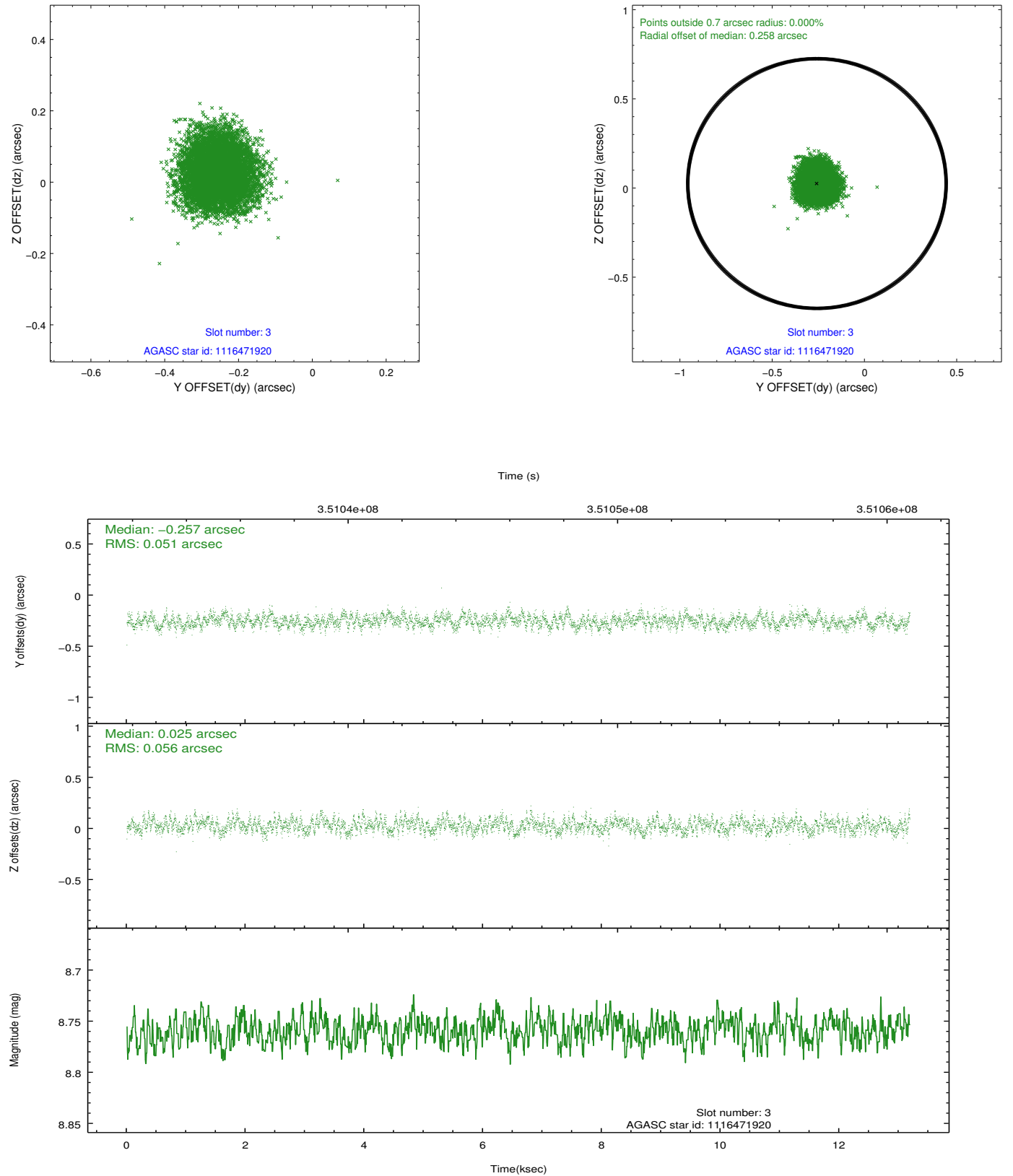


Slot Statistics

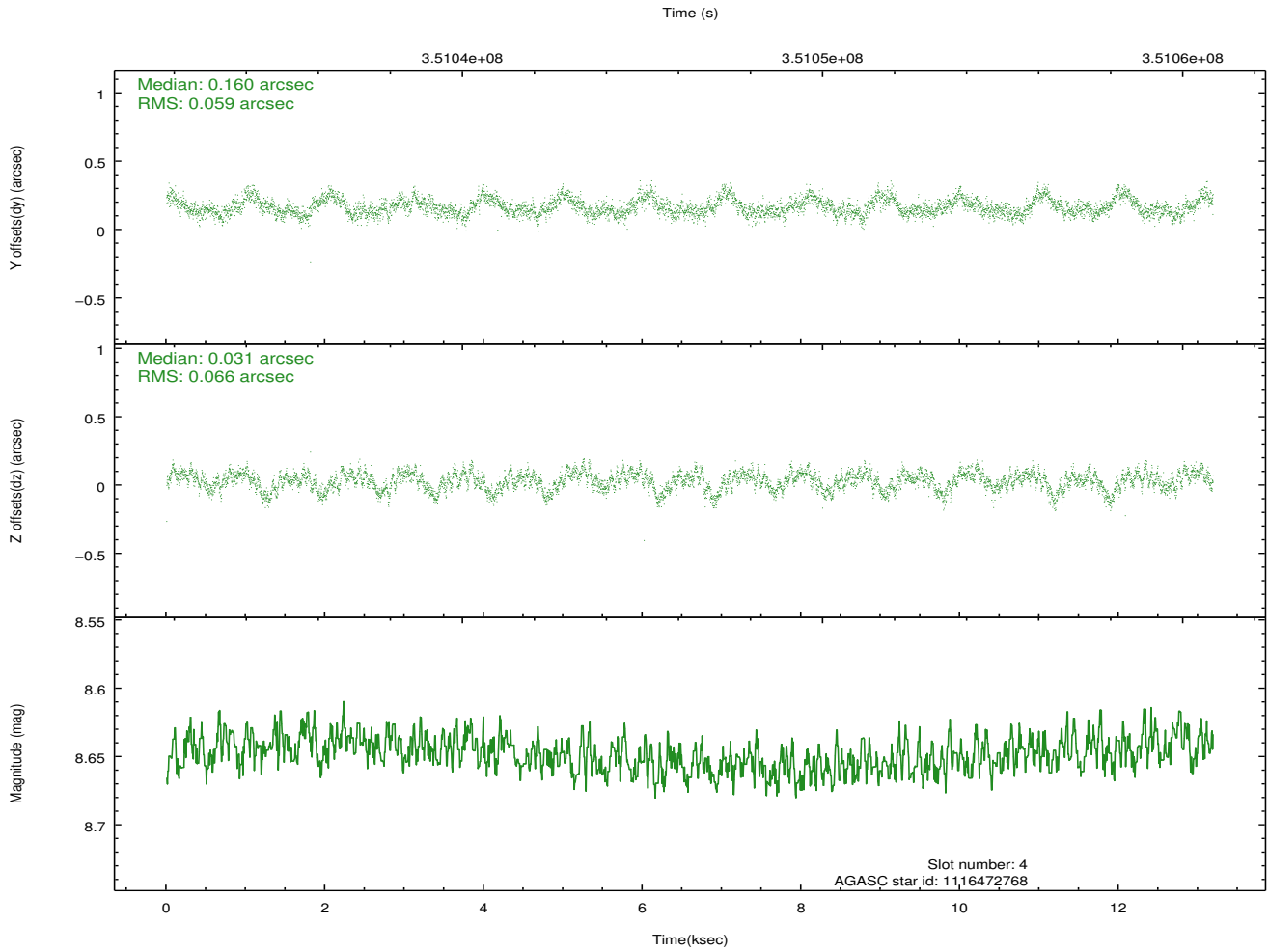
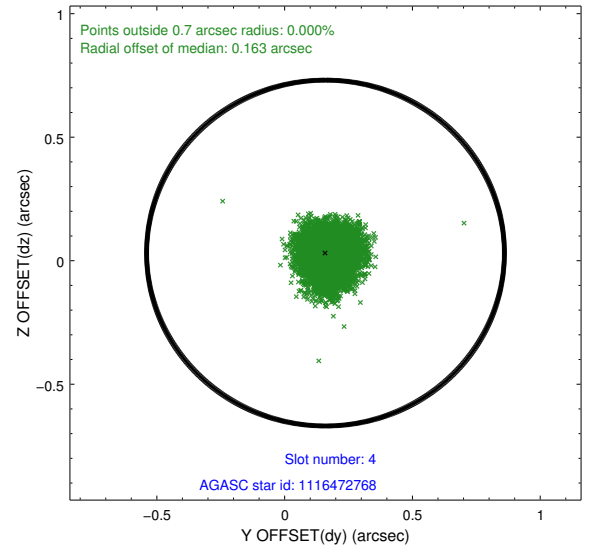
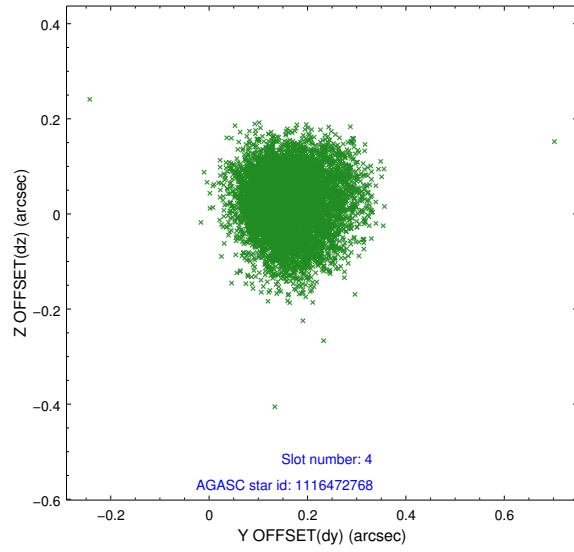
slot	status	id	mag	n_pts	med_dy	med_dz	dr1	dr2	ra	dec	mean_y	mean_z
0	FID	ACIS-I-1	7.07	3217	0.080	-0.057	0.015	0.028	0.000000	0.000000	927.61	-996.68
1	FID	ACIS-I-2	7.03	3217	-0.233	-0.006	0.008	0.013	0.000000	0.000000	-767.00	-1002.32
2	FID	ACIS-I-4	6.98	3215	0.055	0.129	0.011	0.019	0.000000	0.000000	2146.81	904.08
3	GUIDE	1116471920	8.76	6430	-0.257	0.025	0.083	0.128	82.785416	-52.710471	80.91	2025.60
4	GUIDE	1116472768	8.65	6429	0.160	0.031	0.094	0.149	81.201044	-52.621201	-1743.01	-930.47
5	GUIDE	1116473696	7.53	6432	-0.018	0.063	0.078	0.116	81.306955	-52.676900	-1462.30	-809.80
6	GUIDE	1116477608	8.15	6433	0.246	-0.232	0.070	0.110	82.436900	-53.265653	1523.02	448.36
7	GUIDE	1116480536	8.47	6432	-0.136	0.122	0.088	0.141	81.460168	-53.582672	1616.30	-1935.28

2.4 Star Slots

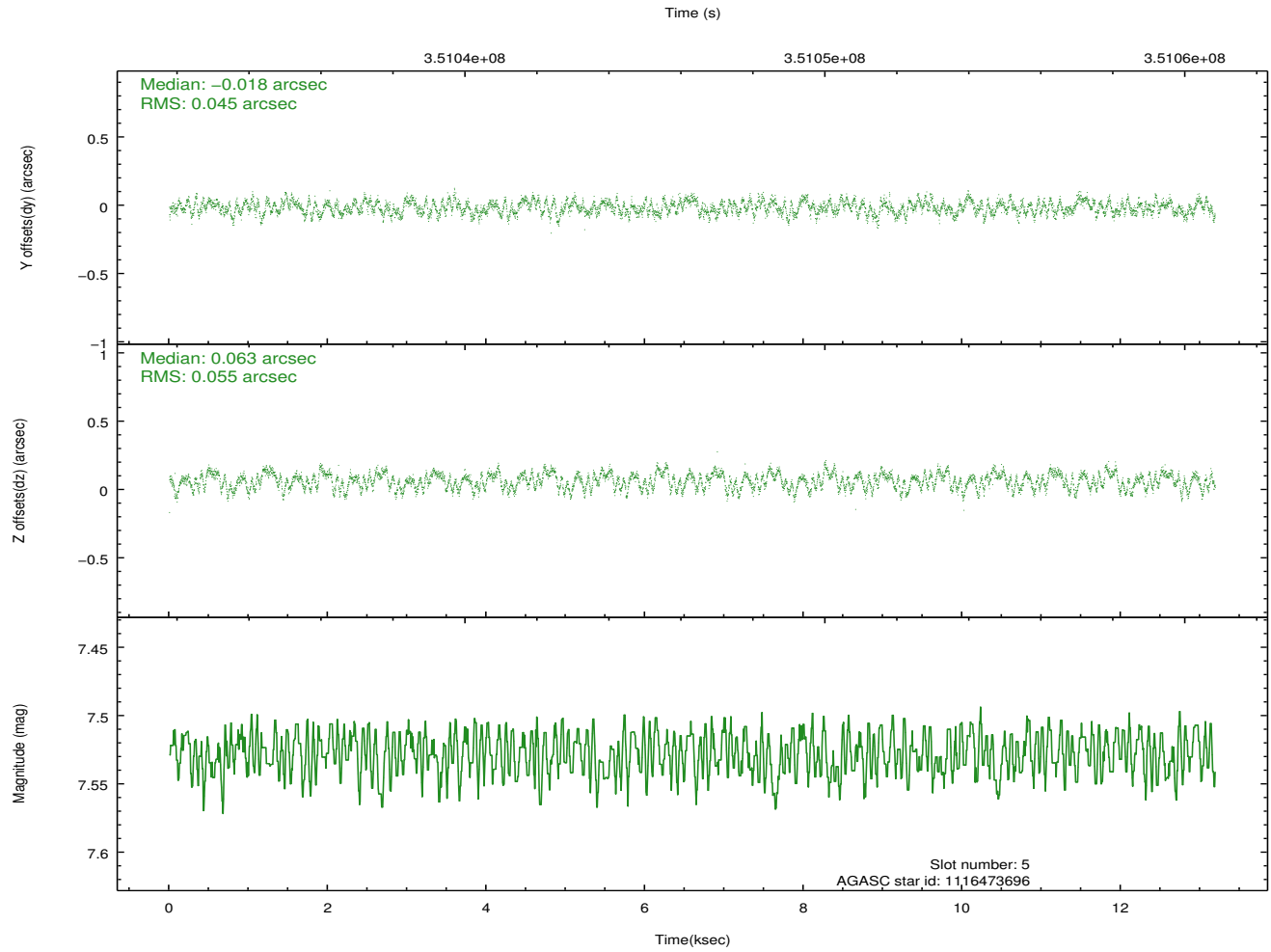
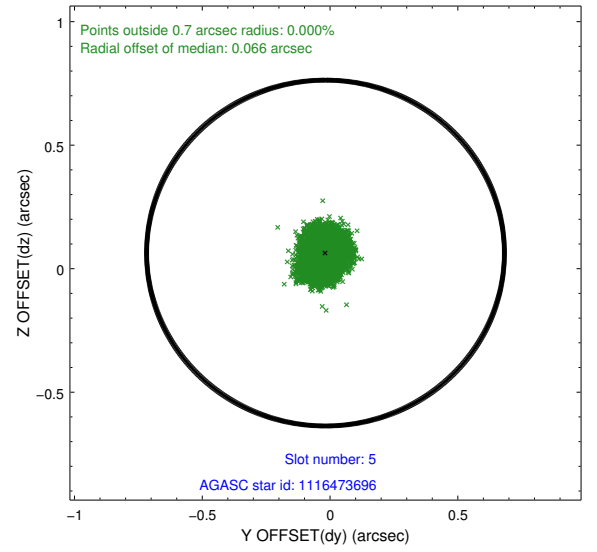
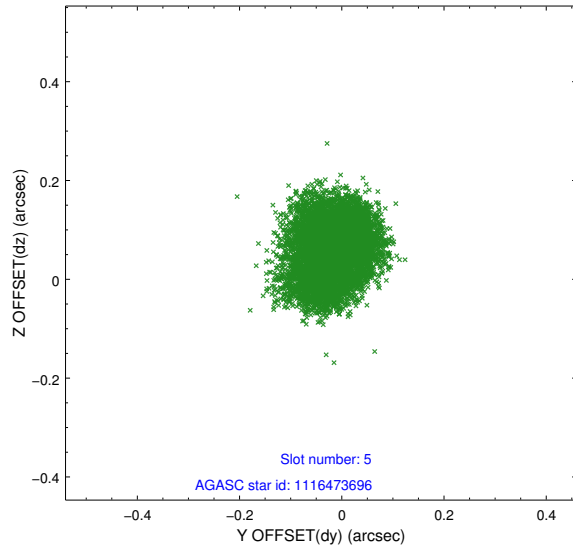
2.4.1 Slot 3



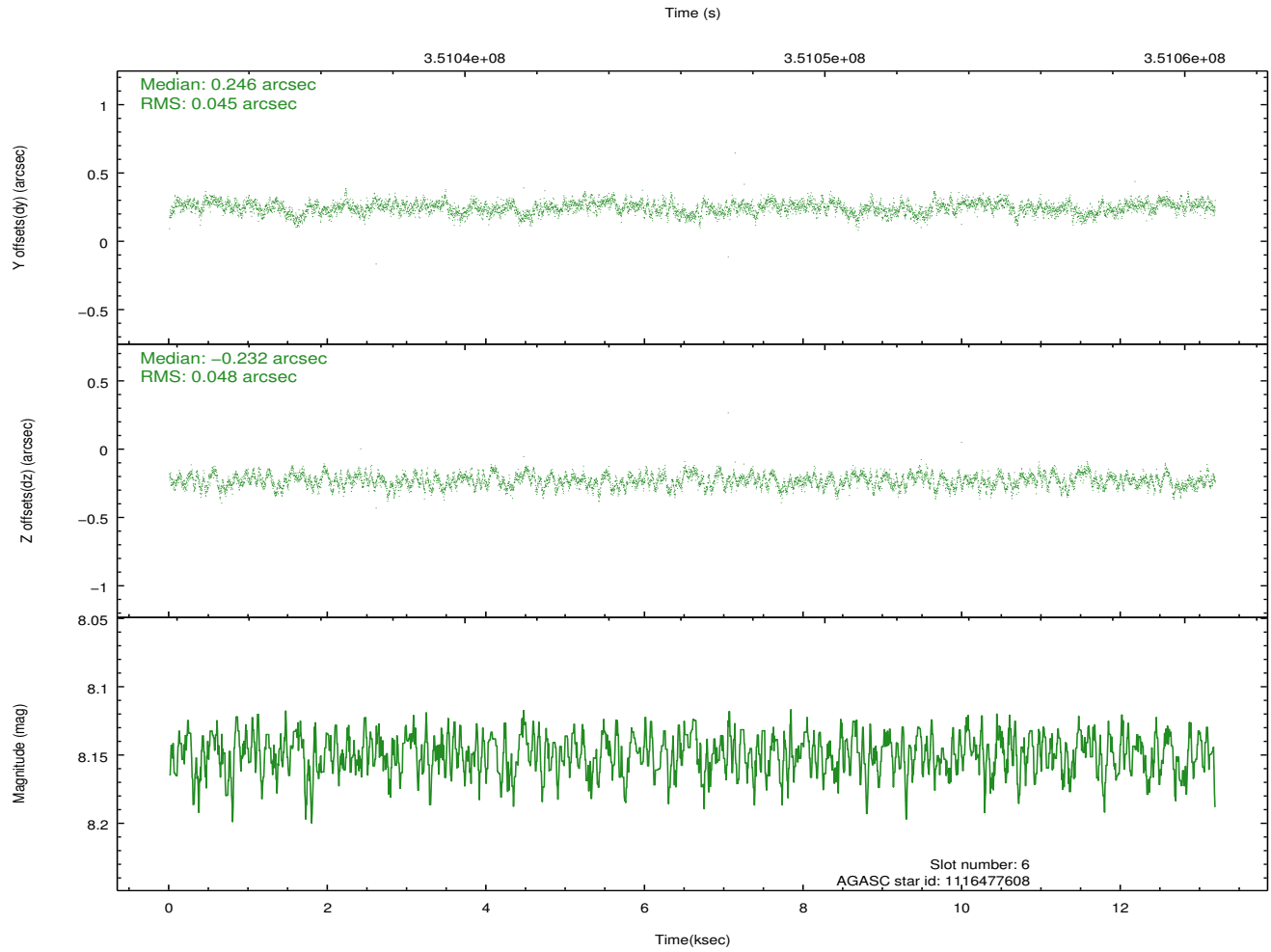
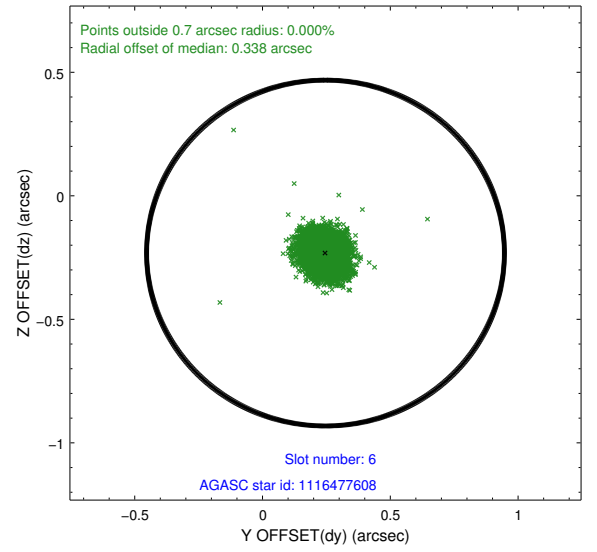
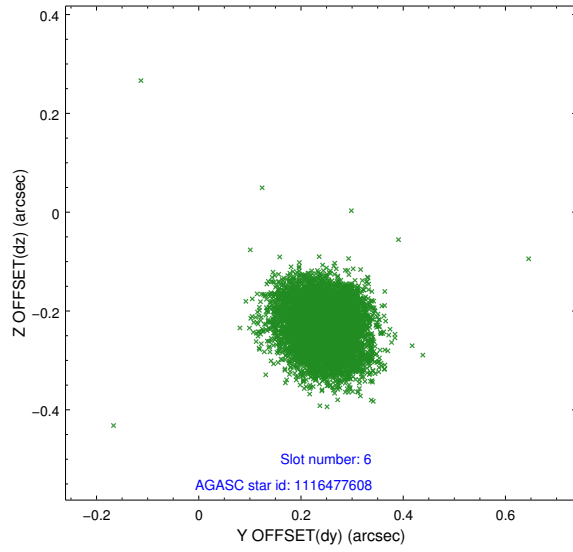
2.4.2 Slot 4



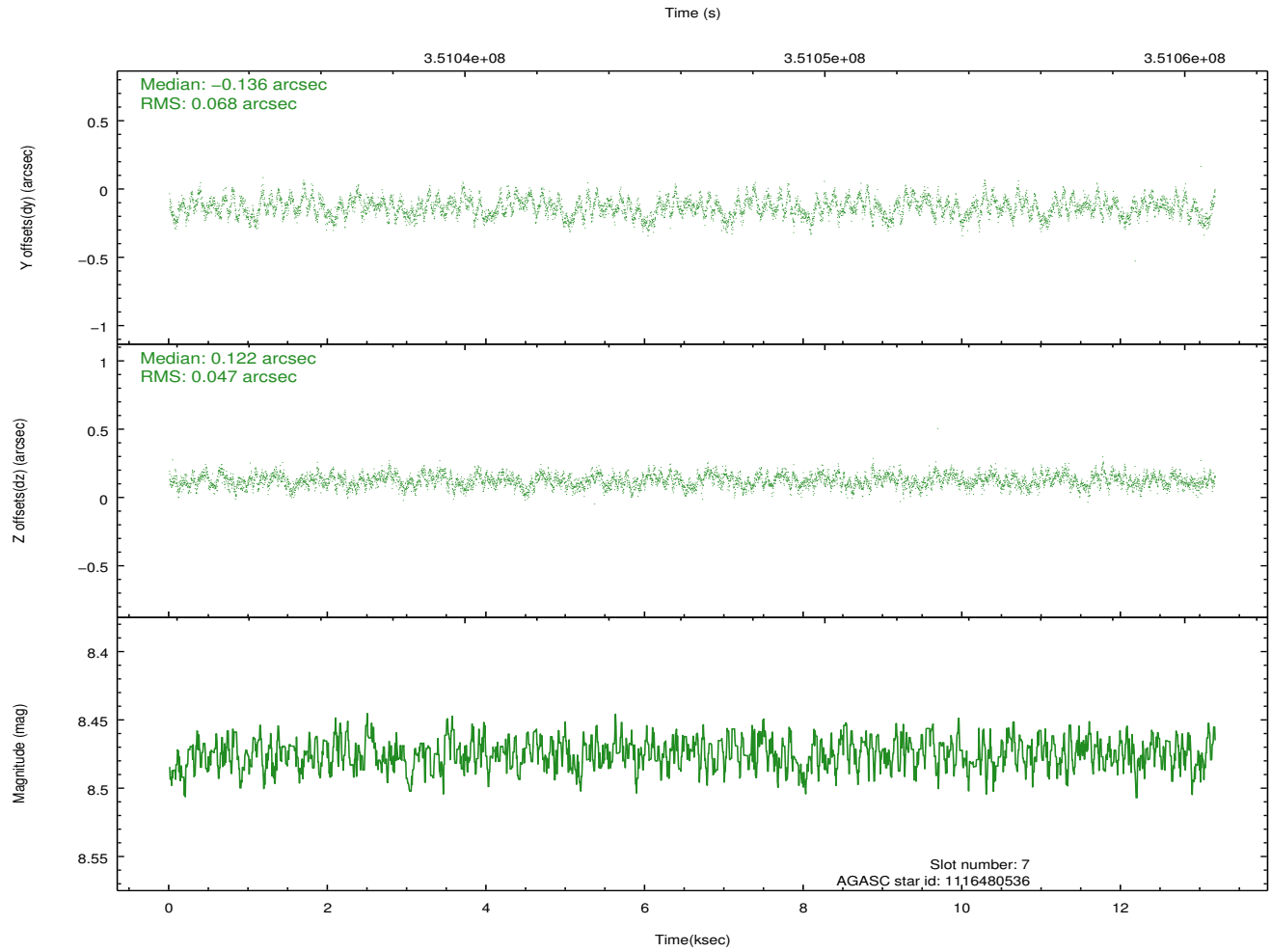
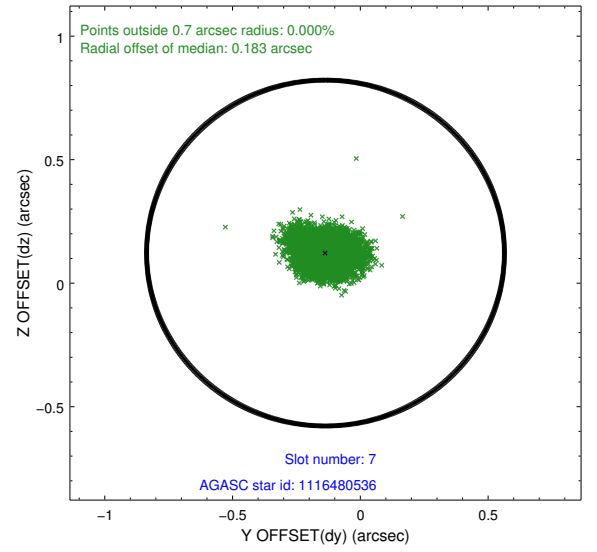
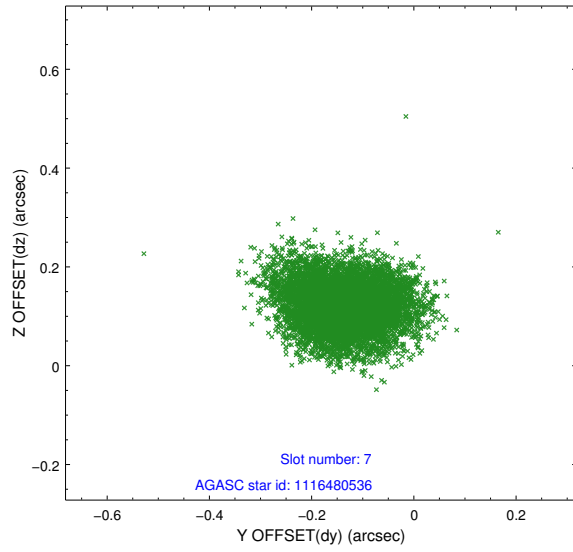
2.4.3 Slot 5



2.4.4 Slot 6

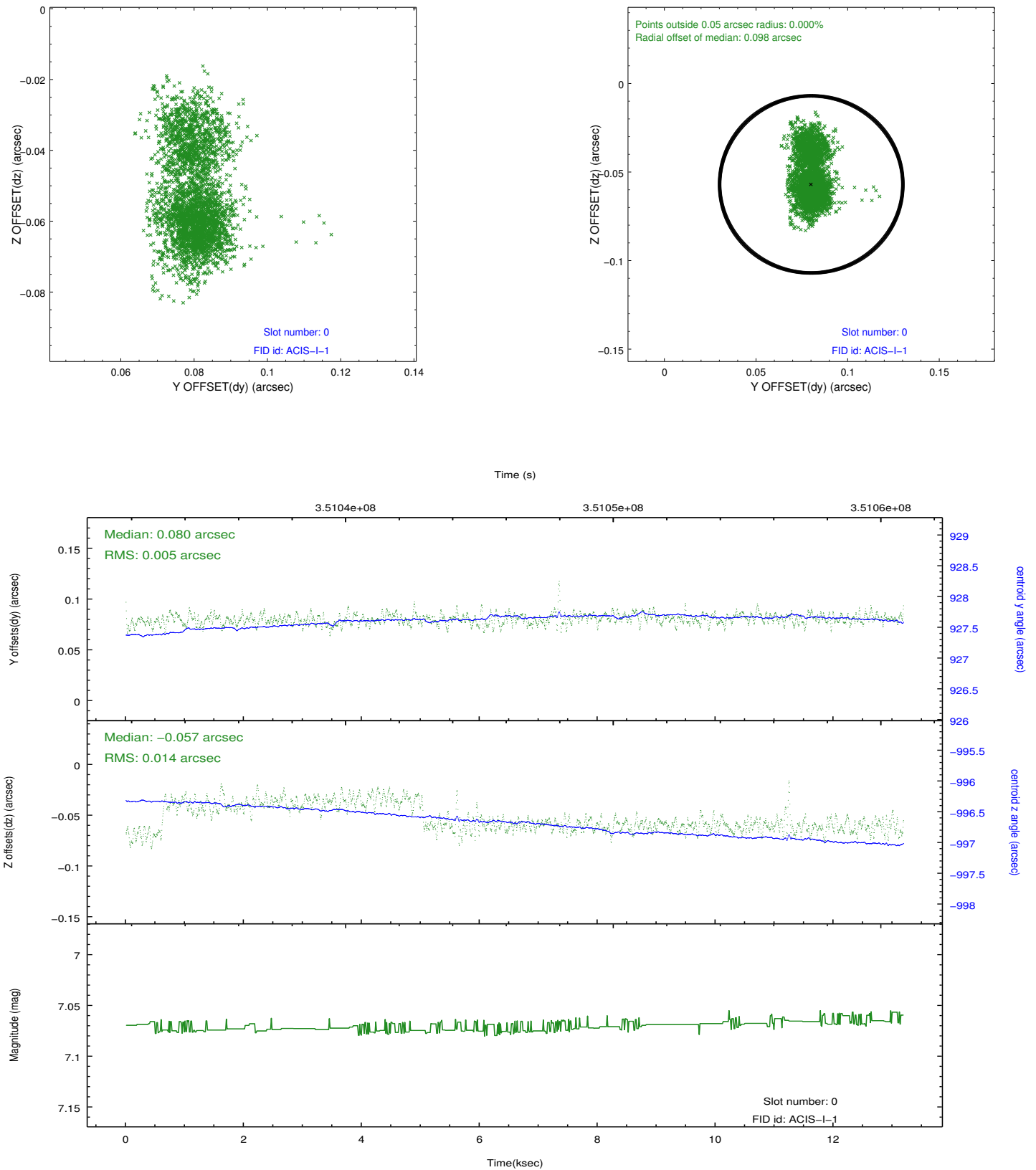


2.4.5 Slot 7

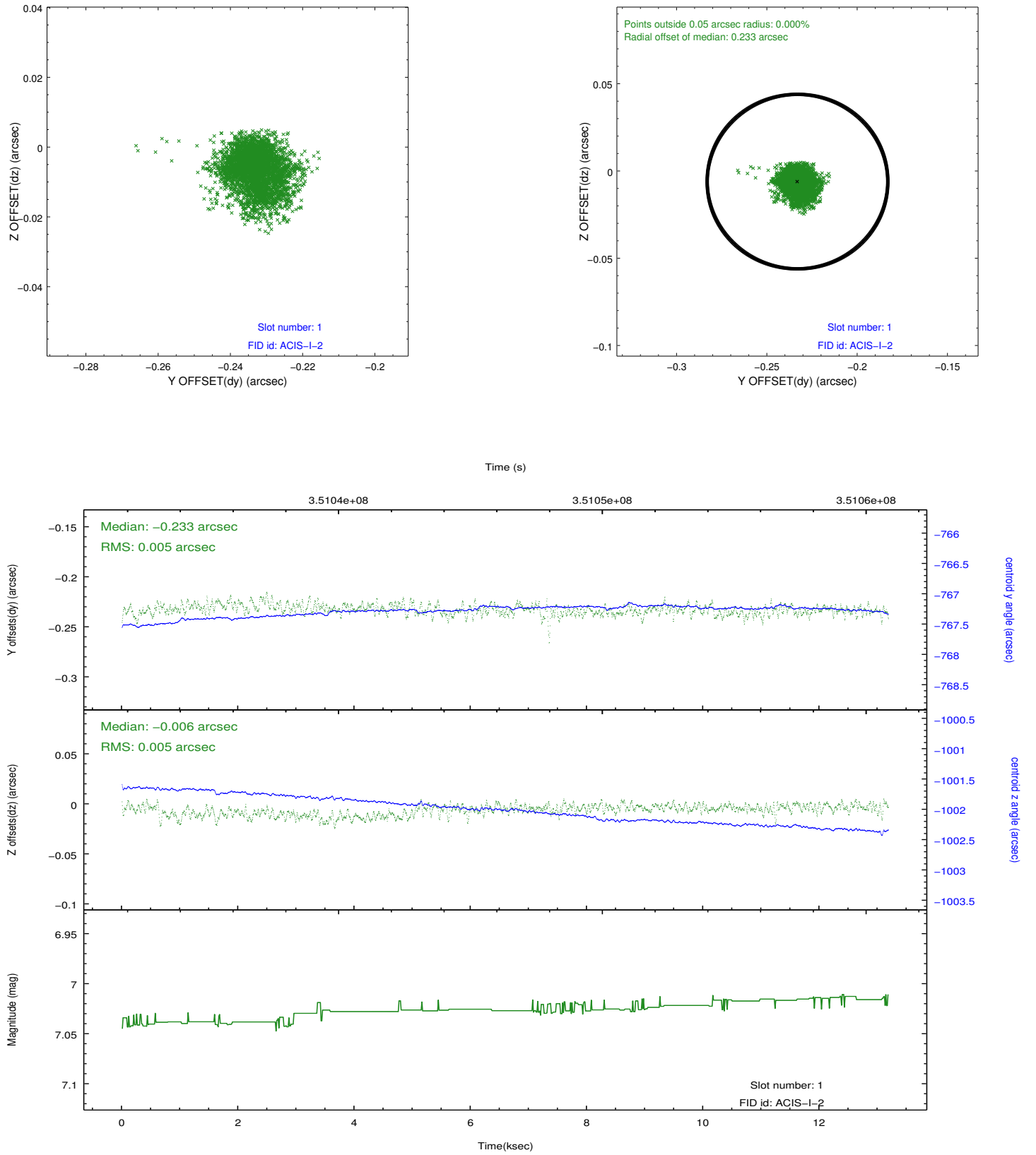


2.5 FID Slots

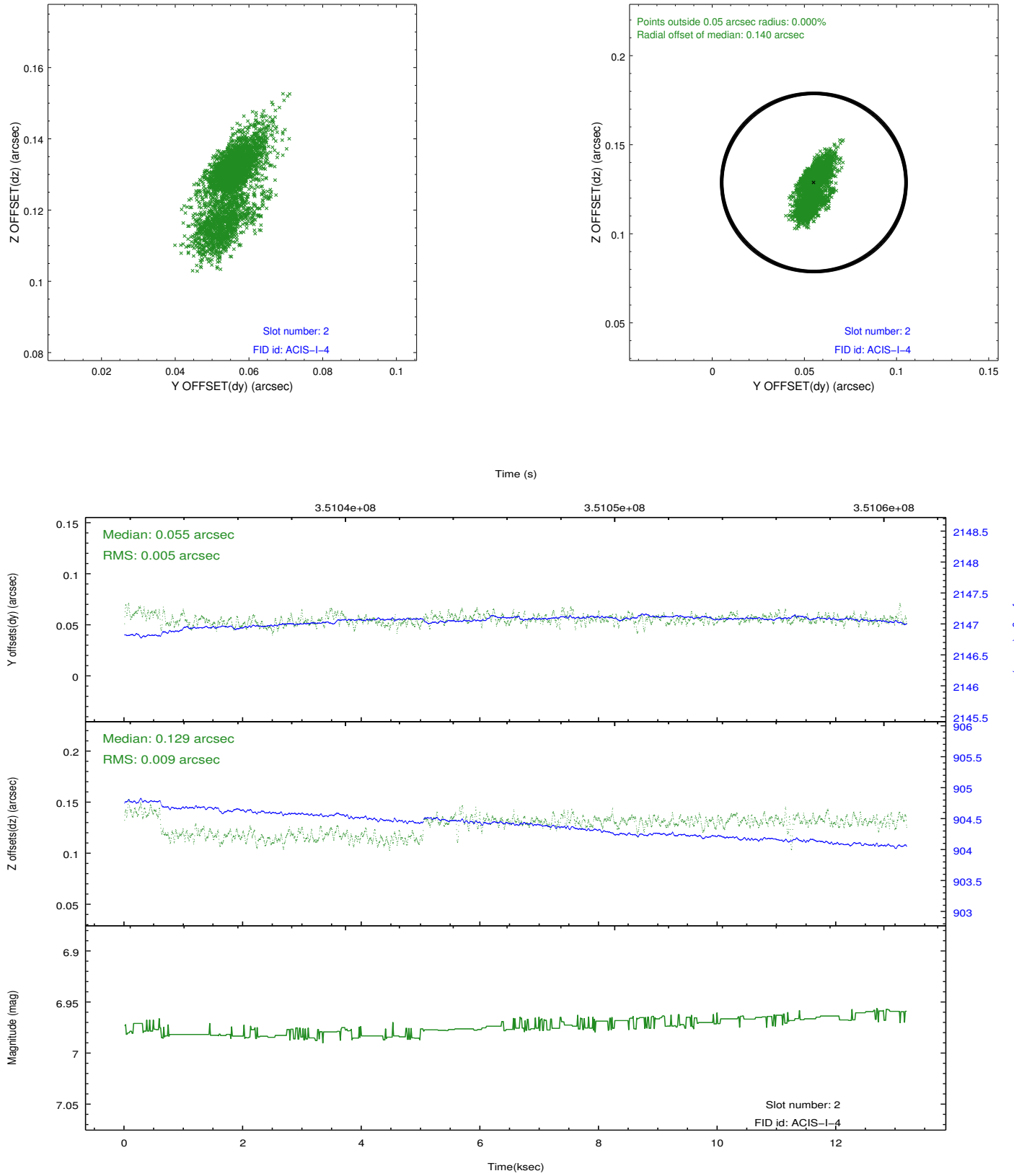
2.5.1 Slot 0



2.5.2 Slot 1



2.5.3 Slot 2



A Summary

A.1 Status

V&V Scientist	Joy Nichols
V&V Date (YYYY-MM-DD)	2012.06.05
V&V Edition	1
V&V Disposition and Status	OK
V&V Charge Time	12.772000098228

A.2 Comments