

V&V Reference Report

L2 ASCDS Version : 8.4.4

Observation 10422 - L2 Version 2
Chandra X-Ray Center

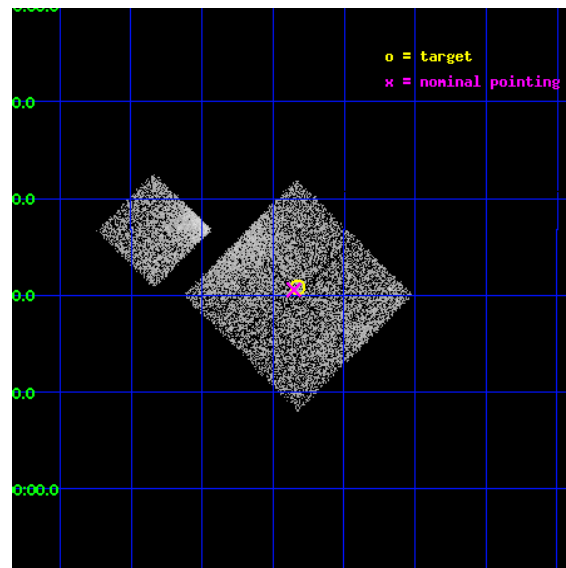
L2 Processing Date : May 30 2012

Contents

1	Front	2
2	OBI	3
2.1	OBI	3
2.1.1	Images	3
2.1.2	Bias	3
2.1.3	Parameters	4
2.1.4	Events	4
2.2	Compared Parameters	5
2.3	Aspect	6
2.4	Star Slots	9
2.4.1	Slot 3	9
2.4.2	Slot 4	10
2.4.3	Slot 5	11
2.4.4	Slot 6	12
2.4.5	Slot 7	13
2.5	FID Slots	14
2.5.1	Slot 0	14
2.5.2	Slot 1	15
2.5.3	Slot 2	16
A	Summary	17
A.1	Status	17
A.2	Comments	17

1 Front

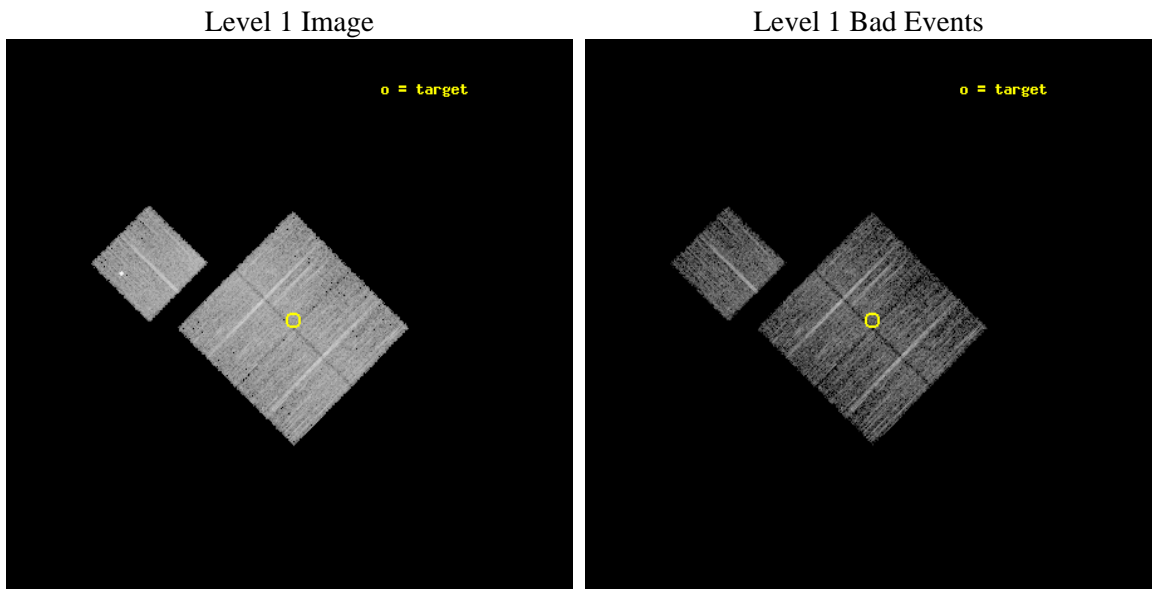
seq_num	800783	Sequence number
obs_id	10422	Observation id
title	A Chandra baseline for galaxy cluster evolution studies	Proposal t
observer	Dr Ben Maughan	Principal investigator
object	A644	Source name
dtcycle	0	
cycle	P	events from which exps? Prim/Second/Both
ra_targ	124.206108	Observer's specified target RA [deg]
dec_targ	-7.6536	Observer's specified target Dec [deg]
ra_nom	124.21328936878	Nominal RA [deg]
dec_nom	-7.6574044000287	Nominal Dec [deg]
roll_nom	314.70967204441	Nominal Roll [deg]
revision	2	Processing version of data
ontime	4774.0000367165	Sum of GTIs [s]
livetime	4711.6242116691	Livetime [s]
ontime0	4774.0000367165	Sum of GTIs [s]
ontime1	4774.0000367165	Sum of GTIs [s]
ontime2	4774.0000367165	Sum of GTIs [s]
ontime3	4774.0000367165	Sum of GTIs [s]
ontime6	4774.0000367165	Sum of GTIs [s]
l2events	22030	Number of level 2 events



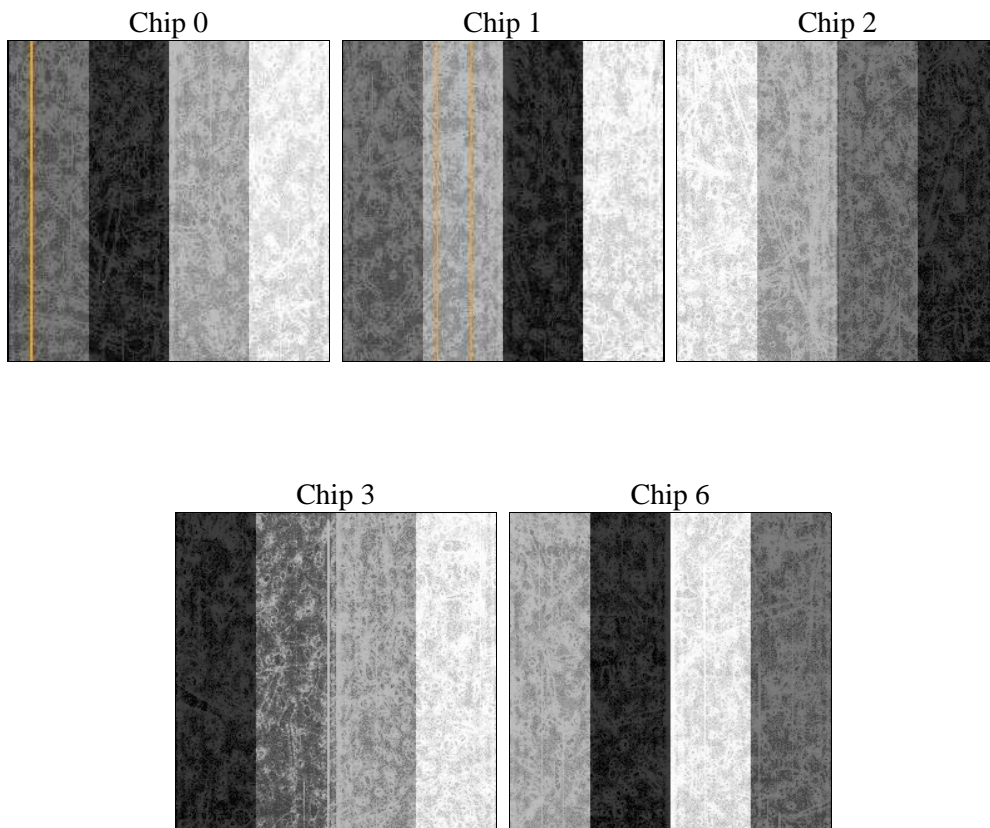
2 OBI

2.1 OBI

2.1.1 Images



2.1.2 Bias



2.1.3 Parameters

obi_num	0	Obi number	sched_exp_time	5000.000000	[s] Scheduled observation exposure time
ascdsver	8.4.4	Processing system revision	ontime	4774.0000367165	Sum of GTIs [s]
caldsver	4.4.9	 	ontime0	4774.0000367165	Sum of GTIs [s]
date	2012-05-30T23:46:28	Date and time of file creation	ontime1	4774.0000367165	Sum of GTIs [s]
revision	2	Processing version of data	ontime2	4774.0000367165	Sum of GTIs [s]
			ontime3	4774.0000367165	Sum of GTIs [s]
			ontime6	4774.0000367165	Sum of GTIs [s]
			l1events	204978	Number of level 1 events

2.1.4 Events

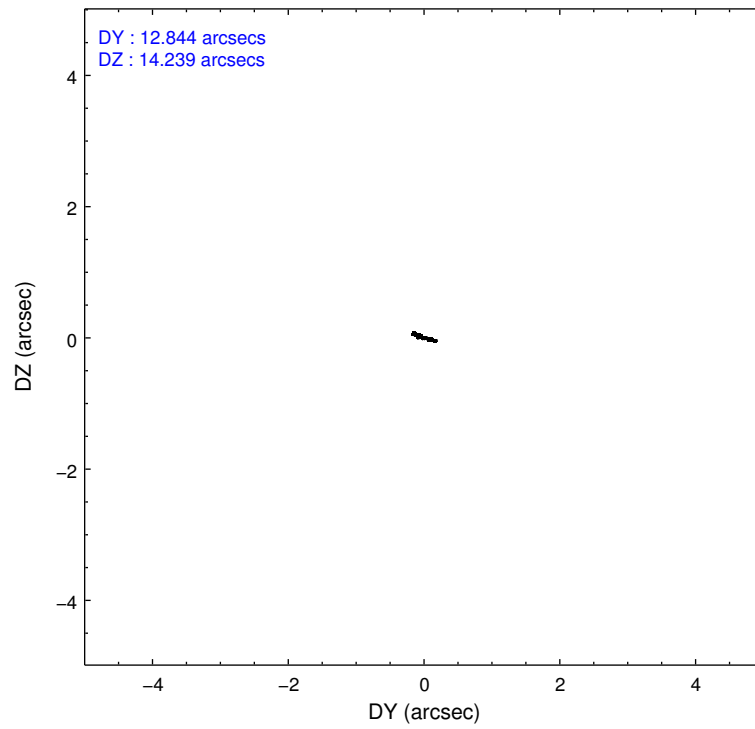
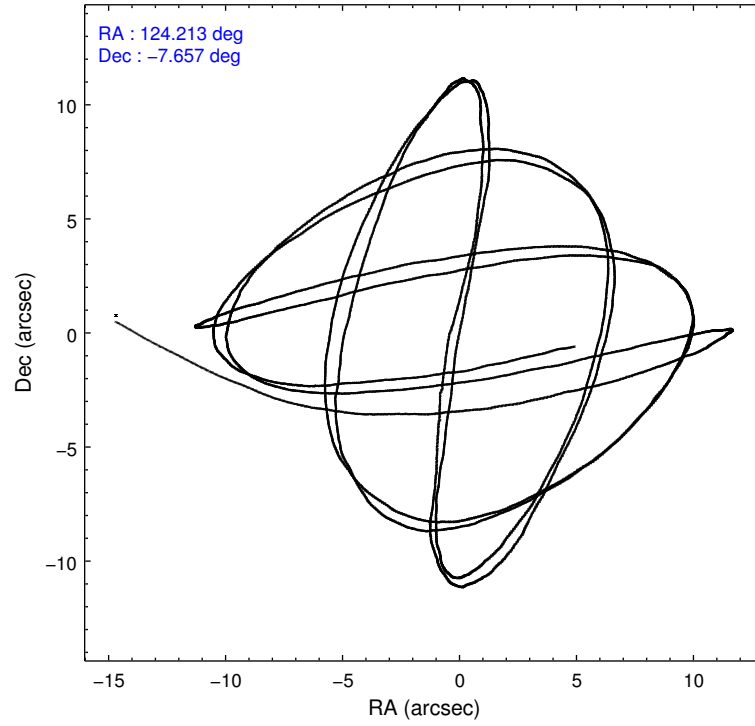
	ccd 0	ccd 1	ccd 2	ccd 3	ccd 6
level 1 events	38774	38277	43476	40652	43799
rejected events	34495	33527	38032	35786	35942
rejected %	88%	87%	87%	88%	82%

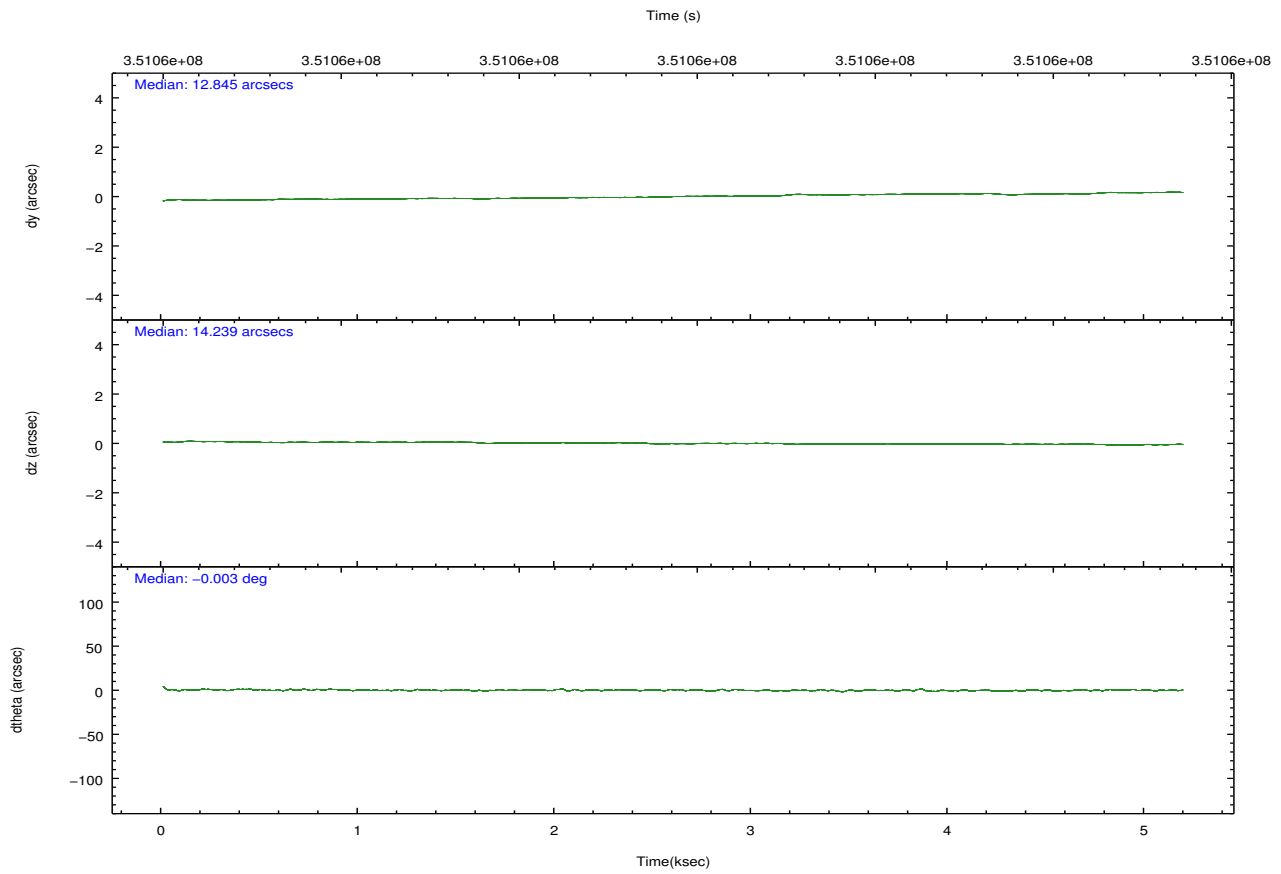
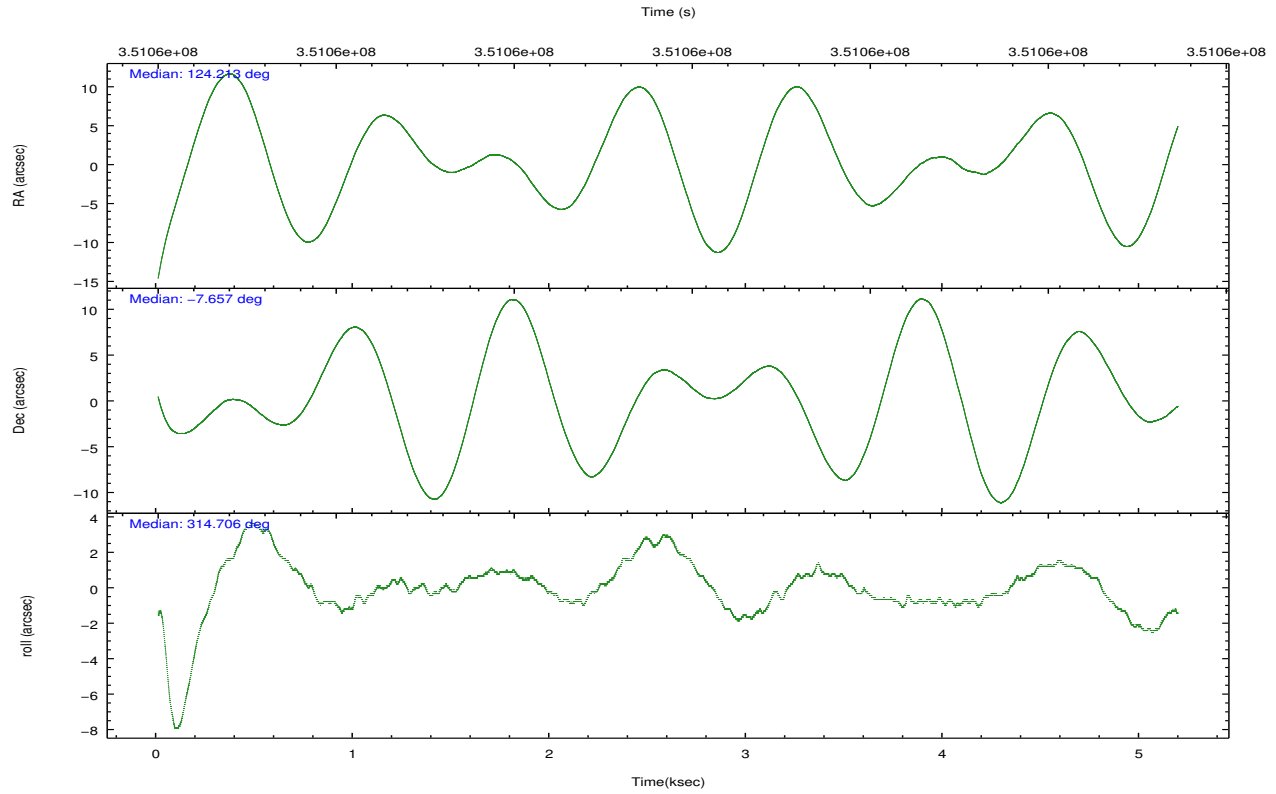
	ccd 0	ccd 1	ccd 2	ccd 3	ccd 6
grade 0 events	1610	1701	2598	2199	4779
	4%	4%	5%	5%	10%
grade 1 events	26	25	25	38	31
	0%	0%	0%	0%	0%
grade 2 events	977	1080	1129	966	1122
	2%	2%	2%	2%	2%
grade 3 events	430	487	458	475	519
	1%	1%	1%	1%	1%
grade 4 events	426	509	471	465	489
	1%	1%	1%	1%	1%
grade 5 events	1518	1641	1438	1684	1717
	3%	4%	3%	4%	3%
grade 6 events	837	977	797	772	957
	2%	2%	1%	1%	2%
grade 7 events	32950	31857	36560	34053	34185
	84%	83%	84%	83%	78%

2.2 Compared Parameters

Parameter	Planned	Actual	Parameter	Planned	Actual
Instrument	ACIS	ACIS	Obspar format version number	7	7
Detector	ACIS-01236	ACIS-01236	Obspar file type	PREDICTED	ACTUAL
Grating	NONE	NONE	Obspar update status	NONE	UPDATED
Data mode	VFAINT	VFAINT	CCD I0 on	Y	Y
Observation mode	POINTING	POINTING	CCD I1 on	Y	Y
[deg] Pointing RA	124.186514	124.213289368778	CCD I2 on	Y	Y
[deg] Pointing Dec	-7.650241	-7.657404400028723	CCD I3 on	Y	Y
[deg] Pointing Roll	314.497393	314.70967204441	CCD S0 on	N	N
[mm] SIM focus pos	-0.782348	-0.7809083437167272	CCD S1 on	N	N
[mm] SIM defocus	0	0.001439871863259334	CCD S2 on	O1	Y
[mm] SIM translation stage pos	-233.592463	-233.5874344608287	CCD S3 on	N	N
[mm] SIM translation stage offset	0	-0.005018542100998502	CCD S4 on	N	N
[s] Observation start time (MET)	351056456.184000	351055490.16583	CCD S5 on	N	N
Observation start date	2009-02-15T03:39:50	2009-02-15T03:24:50	Number of optional ACIS chips dropped	0	0
[s] Observation end time (MET)	351061456.184000	351061590.45363	On-chip summing requested	N	N
Observation end date	2009-02-15T05:03:10	2009-02-15T05:06:30	Subarray requested	NONE	NONE
Read mode	TIMED	TIMED	Alternating exposures requested	N	N
			[s] Primary exposure time	0.000000	3.1

2.3 Aspect



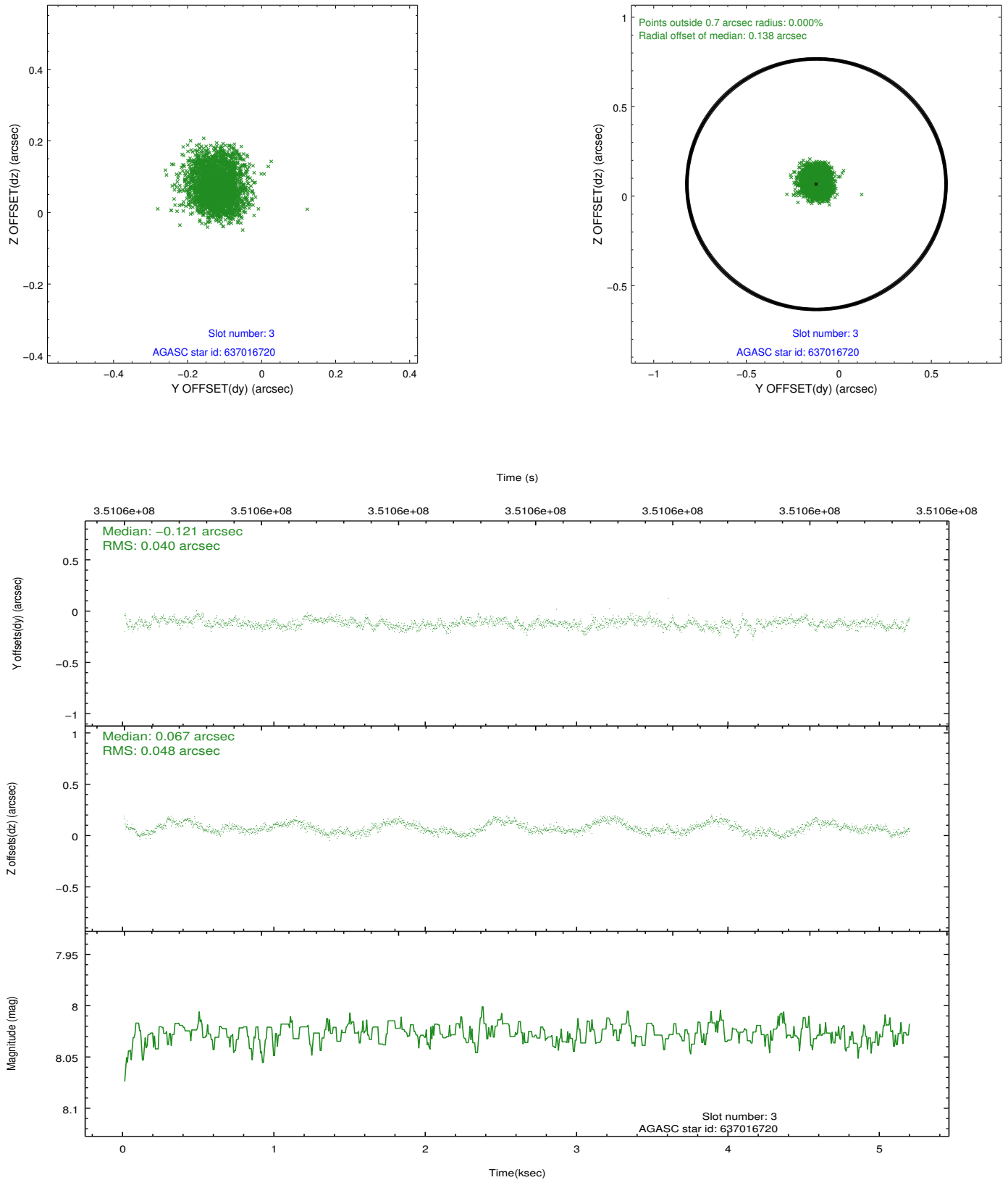


Slot Statistics

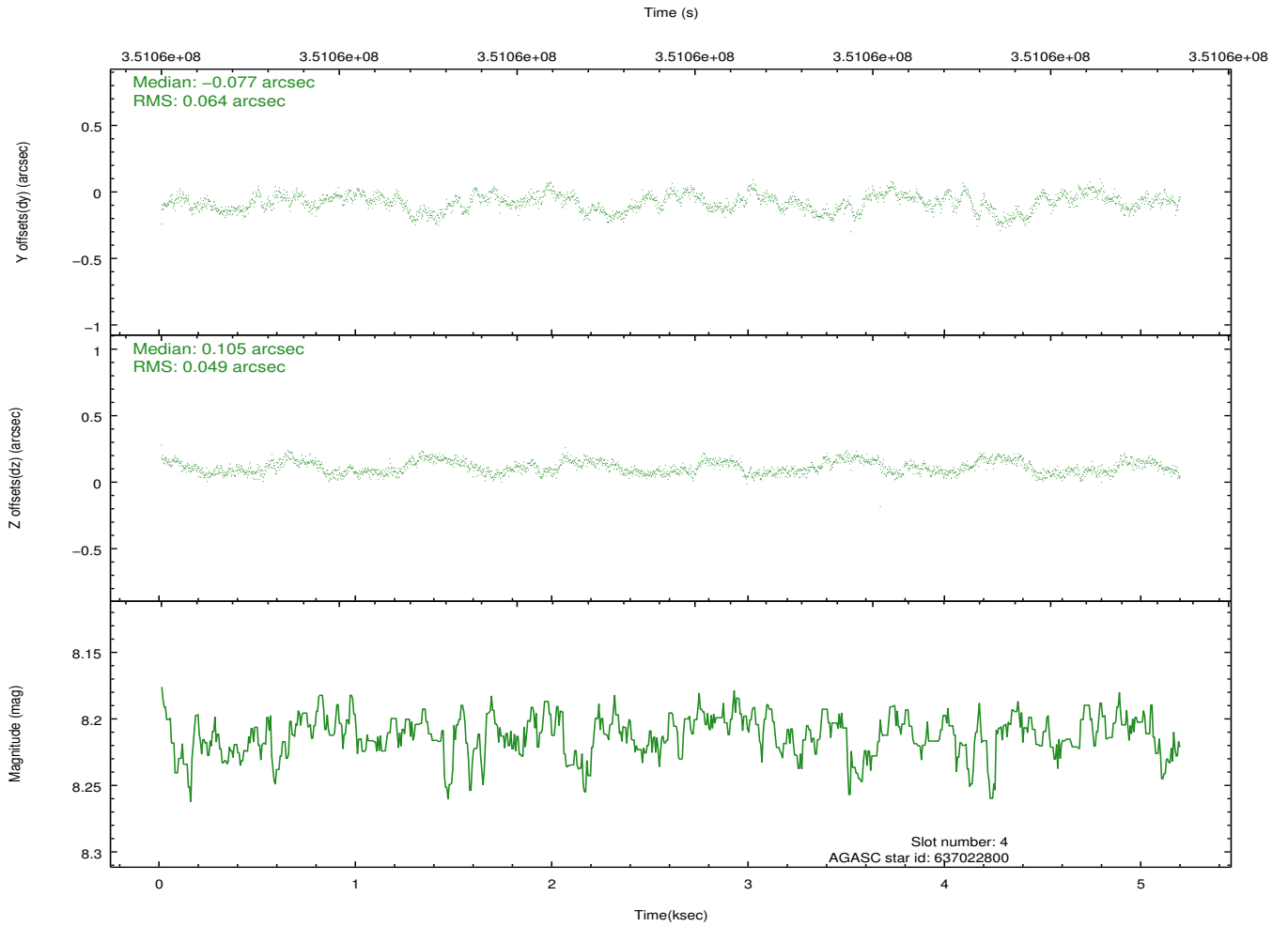
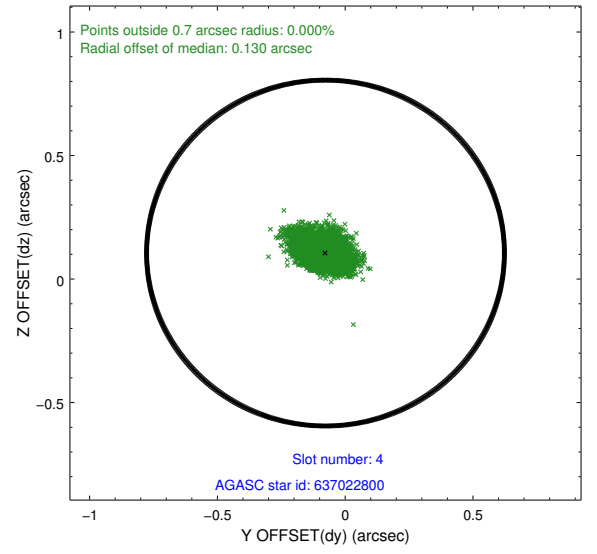
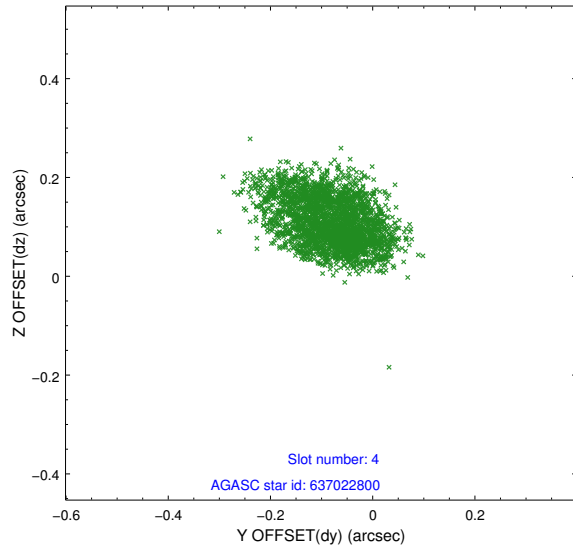
slot	status	id	mag	n_pts	med_dy	med_dz	dr1	dr2	ra	dec	mean_y	mean_z
0	FID	ACIS-I-1	7.07	1266	-0.023	0.030	0.009	0.014	0.000000	0.000000	926.66	-837.79
1	FID	ACIS-I-4	6.99	1266	0.169	0.014	0.008	0.014	0.000000	0.000000	2147.53	1061.43
2	FID	ACIS-I-5	7.06	1266	-0.245	0.027	0.008	0.015	0.000000	0.000000	-1820.08	1060.59
3	GUIDE	637016720	8.03	2532	-0.121	0.067	0.068	0.106	124.059895	-6.973963	-2053.59	1383.81
4	GUIDE	637022800	8.21	2532	-0.077	0.105	0.085	0.138	123.882296	-7.124417	-2112.36	552.12
5	GUIDE	711213640	9.19	2531	0.252	-0.214	0.119	0.200	124.177082	-8.552048	2292.06	-2299.07
6	GUIDE	711329976	9.38	2529	0.015	-0.004	0.113	0.177	124.662593	-7.893879	1817.18	594.75
7	GUIDE	711335880	7.89	2530	-0.064	0.035	0.064	0.105	124.602828	-7.571278	839.61	1258.86

2.4 Star Slots

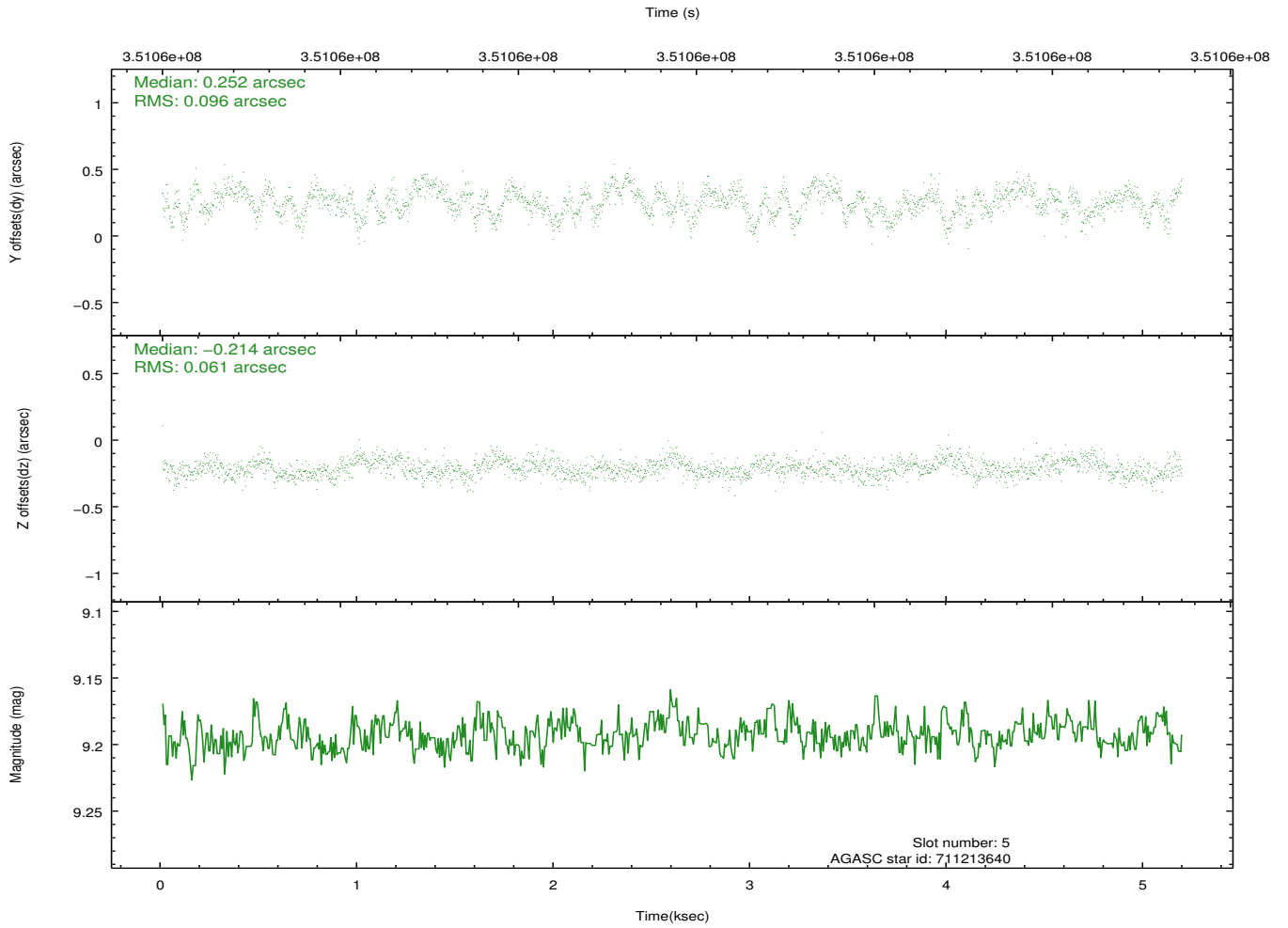
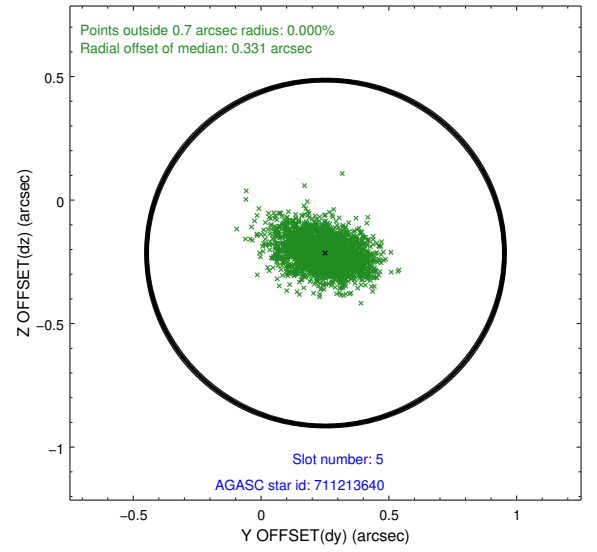
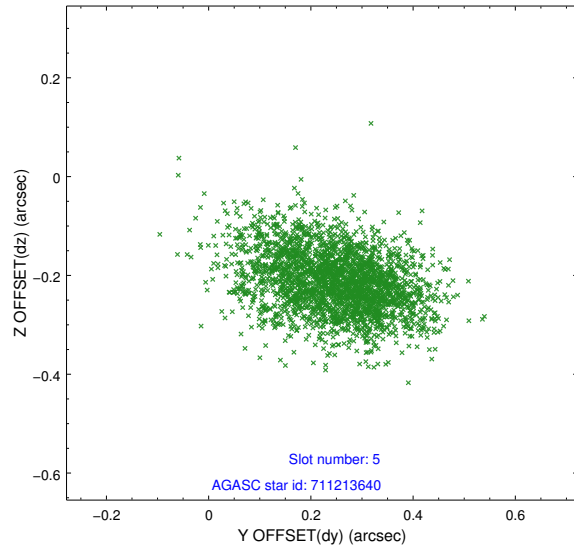
2.4.1 Slot 3



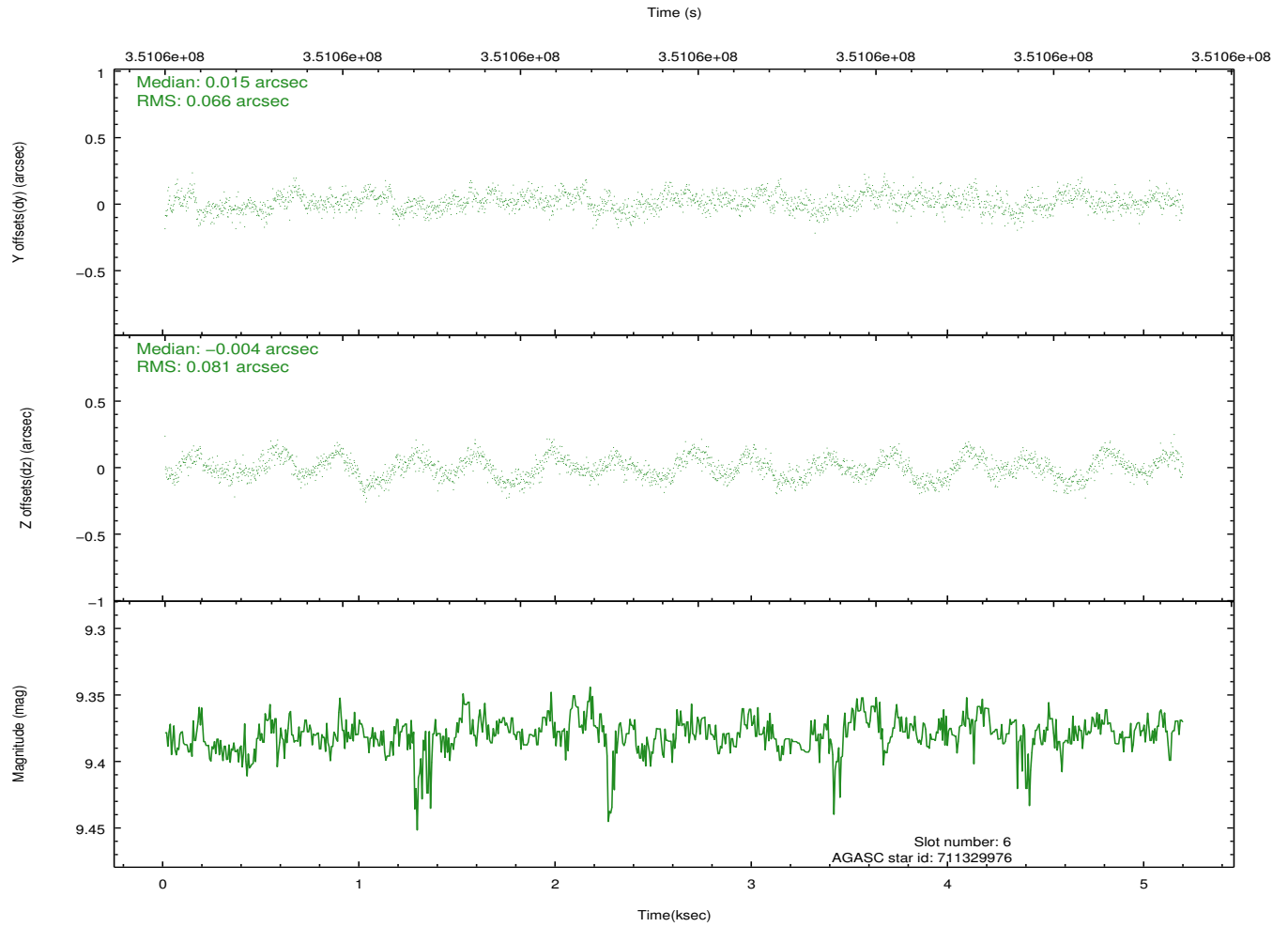
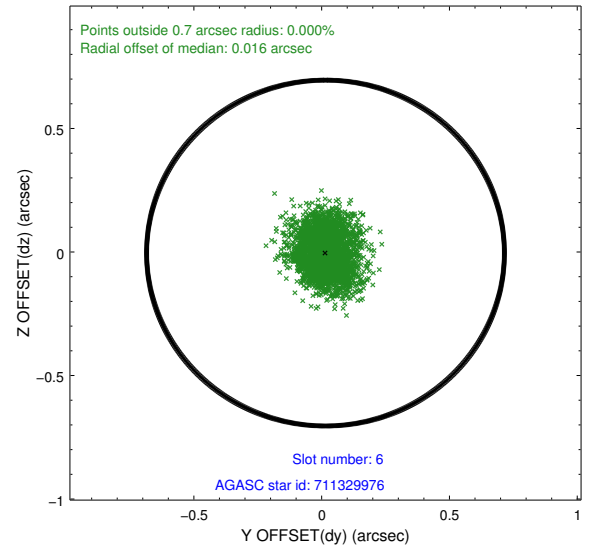
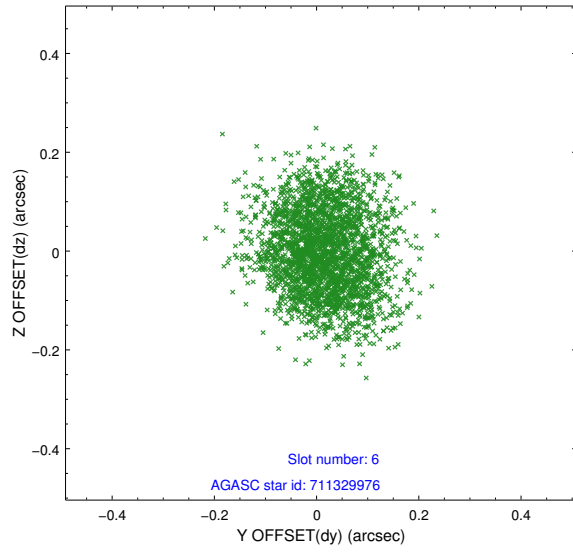
2.4.2 Slot 4



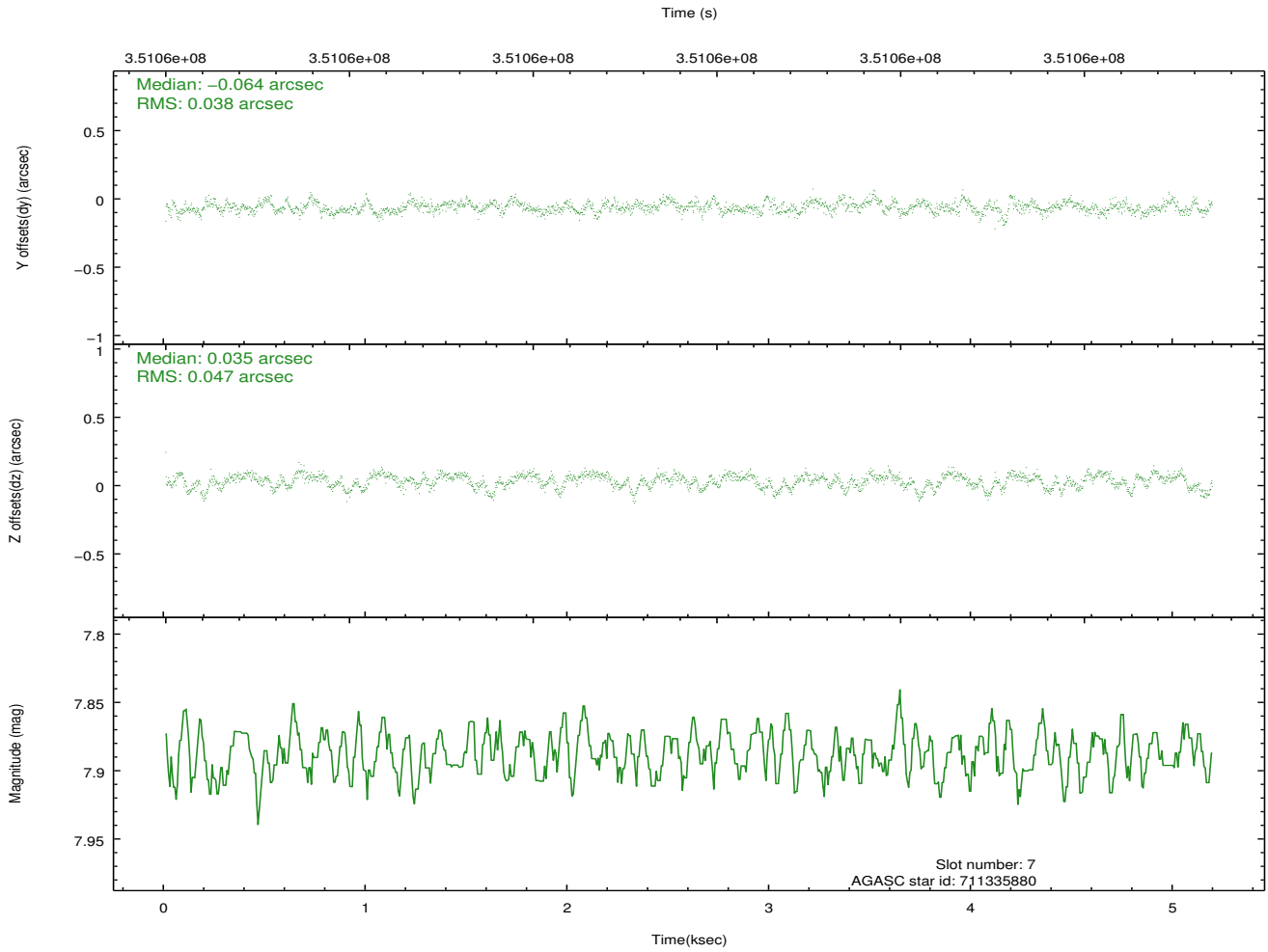
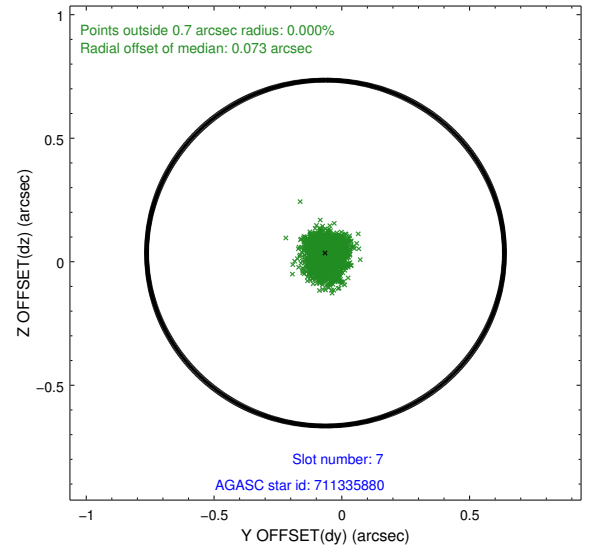
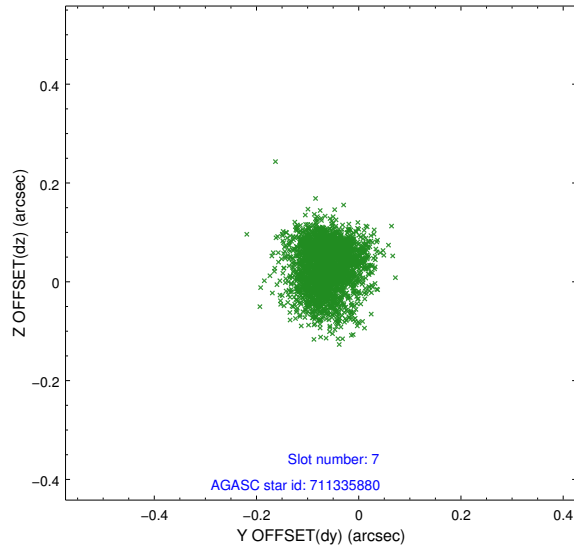
2.4.3 Slot 5



2.4.4 Slot 6

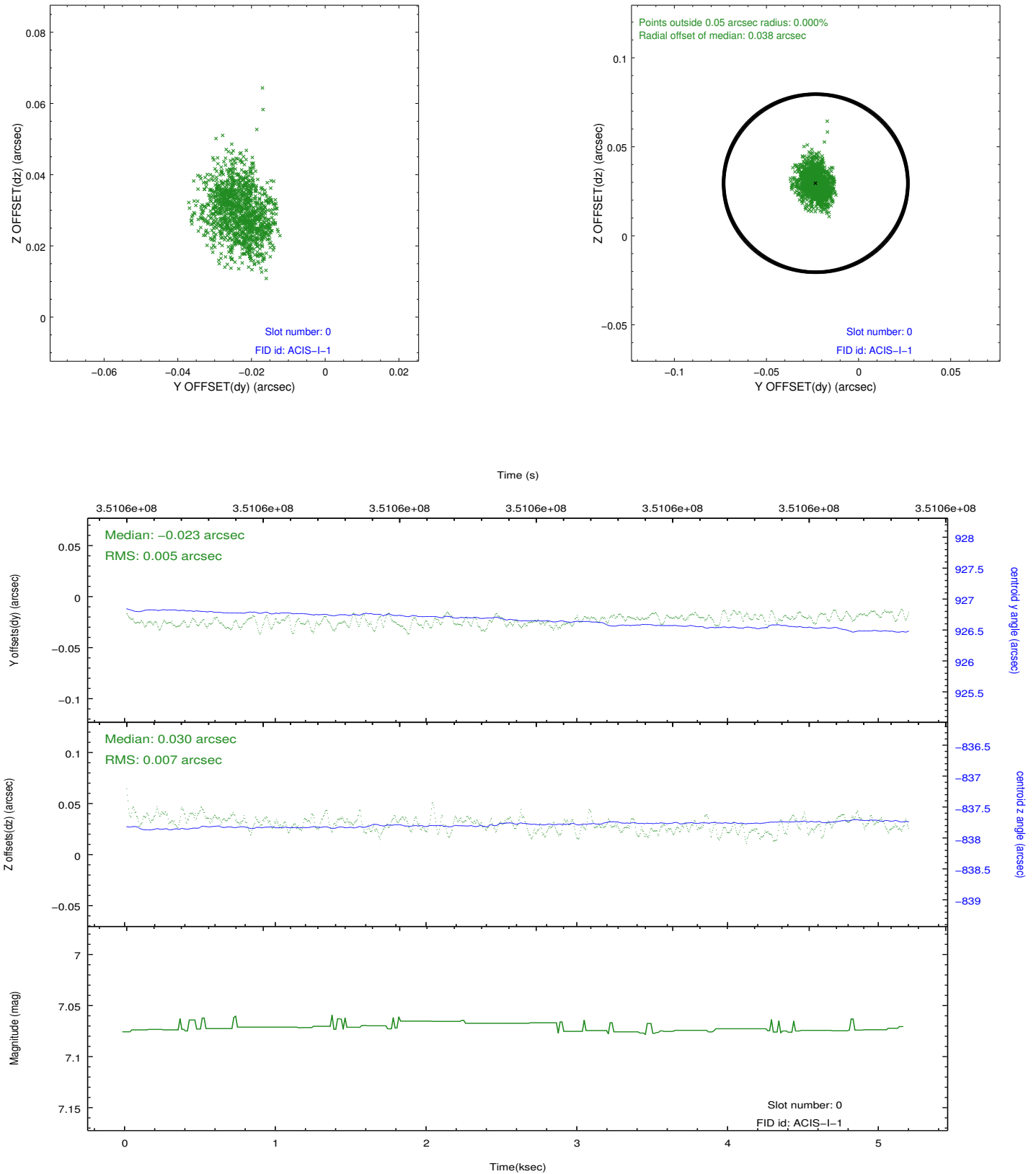


2.4.5 Slot 7

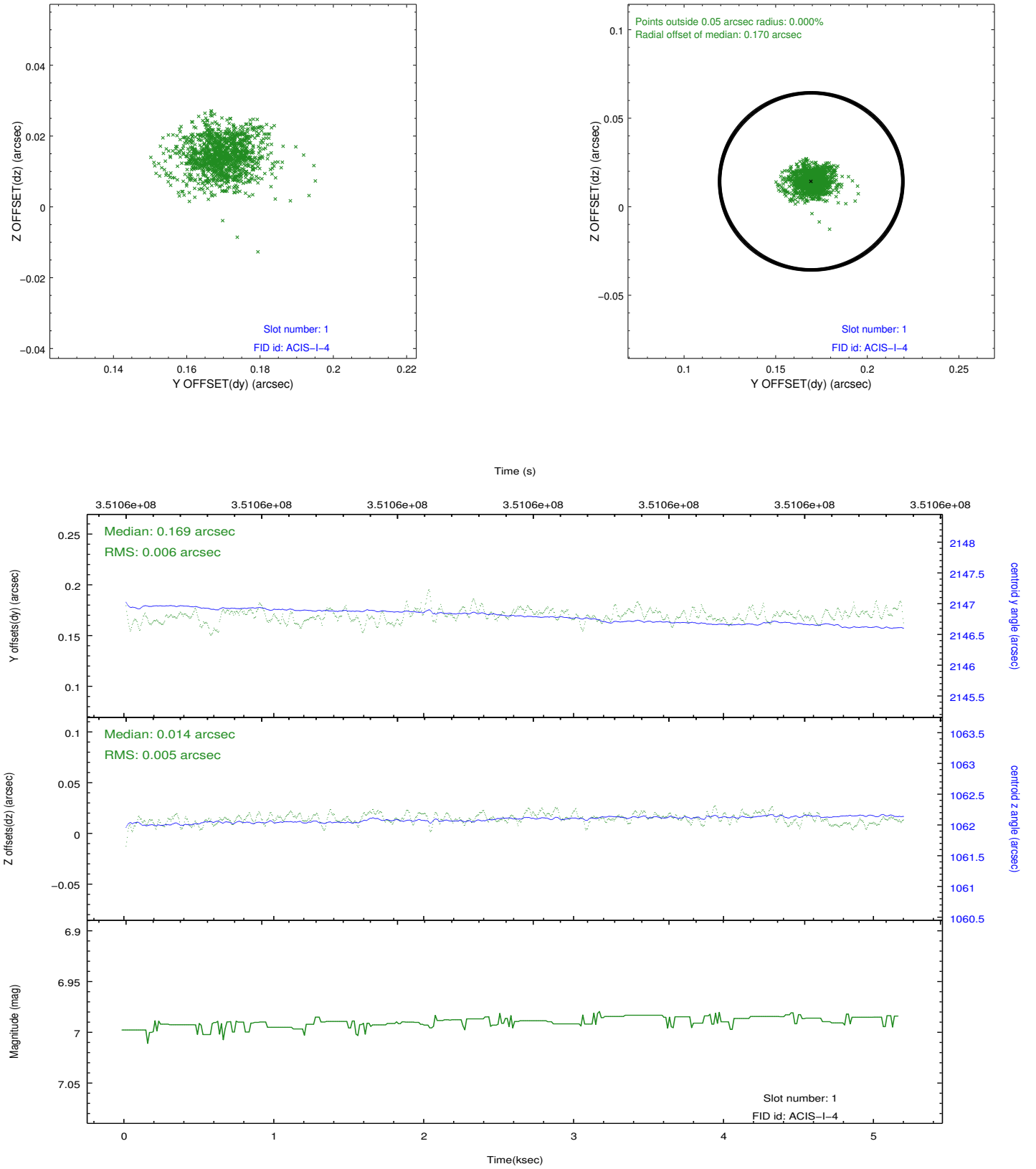


2.5 FID Slots

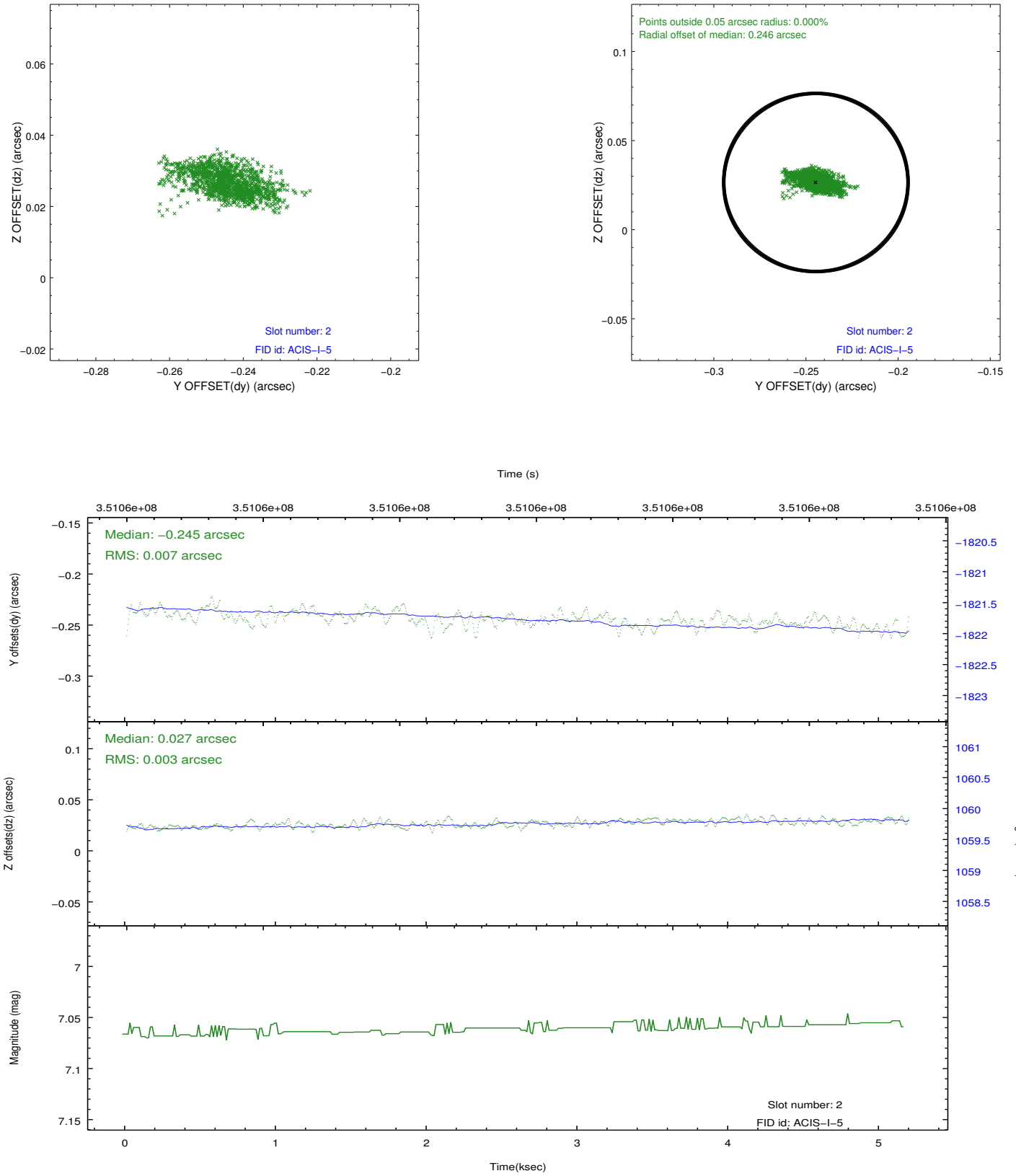
2.5.1 Slot 0



2.5.2 Slot 1



2.5.3 Slot 2



A Summary

A.1 Status

V&V Scientist	Joy Nichols
V&V Date (YYYY-MM-DD)	2012.06.05
V&V Edition	1
V&V Disposition and Status	OK
V&V Charge Time	4.7740000367165

A.2 Comments