

V&V Reference Report

L2 ASCDS Version : 7.6.9

Observation 1042 - L2 Version 001
Chandra X-Ray Center

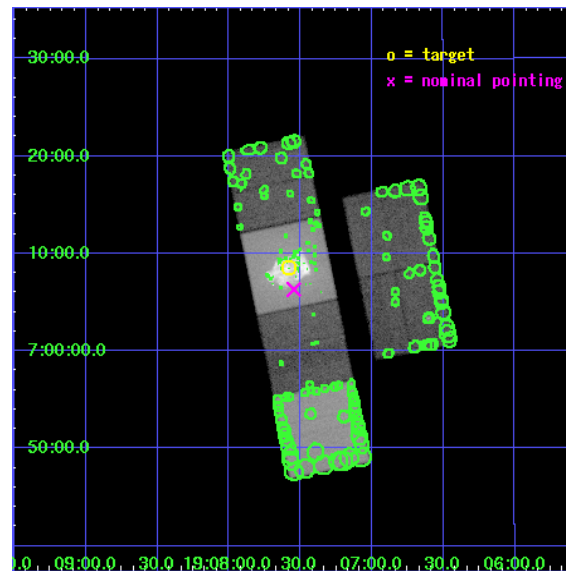
L2 Processing Date : Dec 31 2006

Contents

1	Front	2
2	OBI	3
2.1	OBI	3
2.1.1	Images	3
2.1.2	Bias	3
2.1.3	Parameters	4
2.1.4	Events	4
2.2	Compared Parameters	5
2.3	Aspect	6
2.4	Star Slots	9
2.4.1	Slot 3	9
2.4.2	Slot 4	10
2.4.3	Slot 5	11
2.4.4	Slot 6	12
2.4.5	Slot 7	13
2.5	FID Slots	14
2.5.1	Slot 0	14
2.5.2	Slot 1	15
2.5.3	Slot 2	16
3	Point Sources	17
A	Summary	18
A.1	Status	18
A.2	Comments	18

1 Front

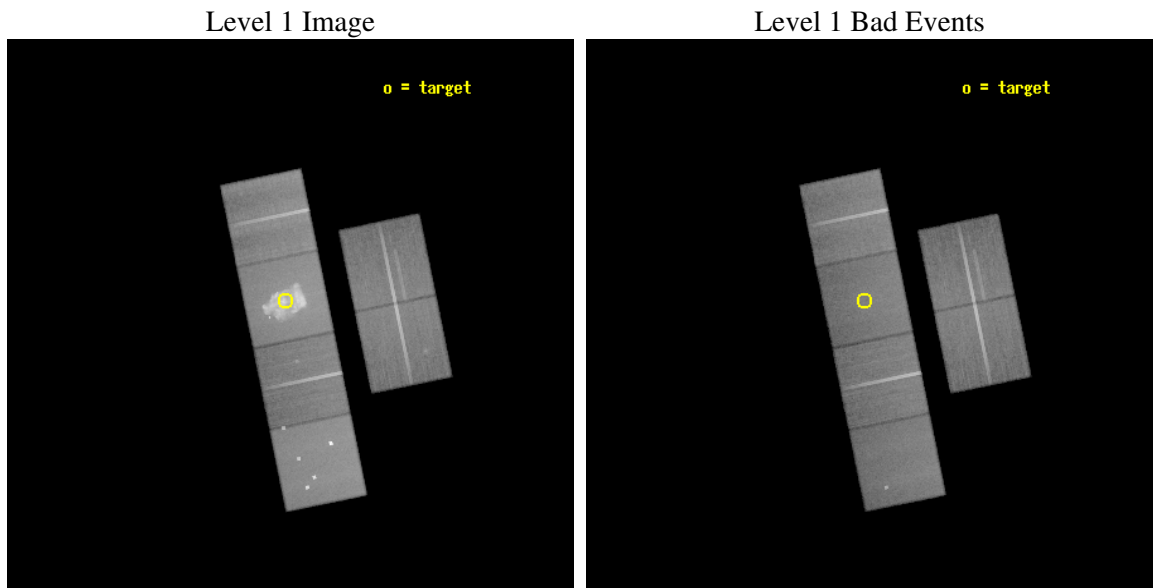
seq_num	500108
obs_id	1042
title	ACIS OBSERVATION OF THE SUPERNOVA REMNANT 3C397
observer	DR STEPHEN HOLT
object	3C397
dtcycle	0
cycle	P
ra_targ	286.895833
dec_targ	7.141667
ra_nom	286.8864551082
dec_nom	7.1053810409785
roll_nom	258.38147591926
revision	2
ontime	66851.20006226
livetime	66004.689914112
ontime2	66851.20006226
ontime3	66847.959072068
ontime5	66851.20006226
ontime6	66851.20006226
ontime7	66851.20006226
ontime8	66851.20006226
l2events	910379



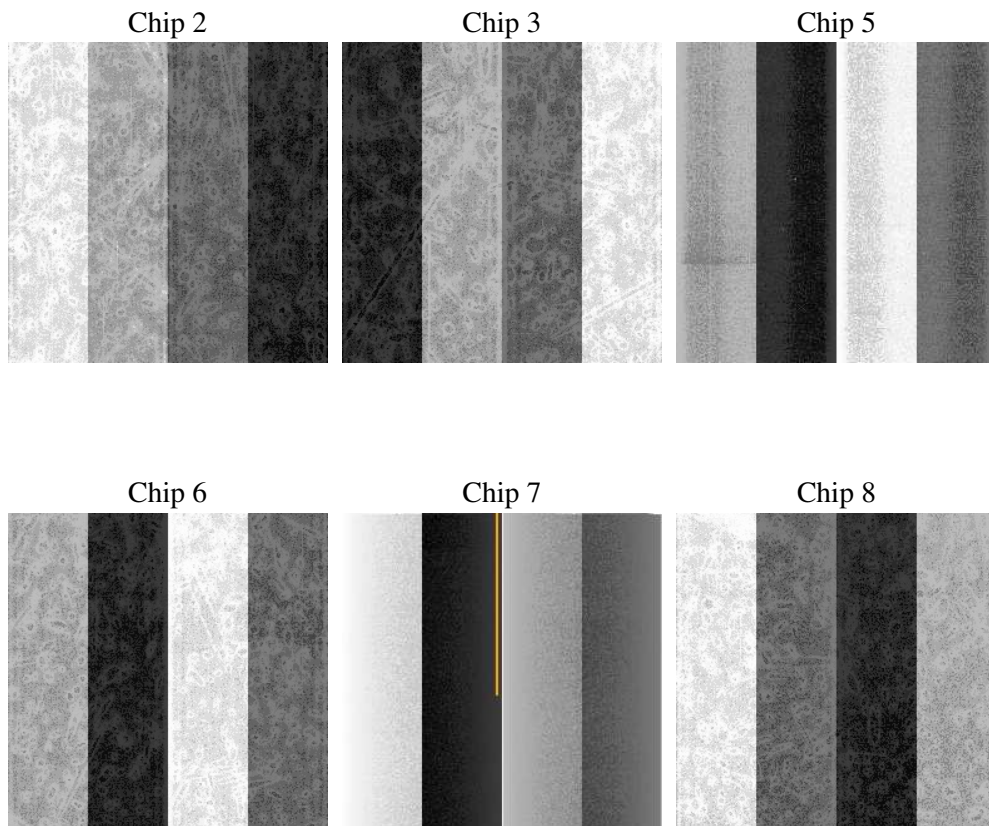
2 OBI

2.1 OBI

2.1.1 Images



2.1.2 Bias



2.1.3 Parameters

obi_num	0
ascdsver	7.6.9
caldsver	3.2.4
date	2006-12-31T06:49:08
revision	2

sched_exp_time	66900.000000
ontime	66855.357101828
ontime2	66855.357101828
ontime3	66852.116111636
ontime5	66855.357101828
ontime6	66855.357071906
ontime7	66855.357101828
ontime8	66855.357071906
l1events	3293026

2.1.4 Events

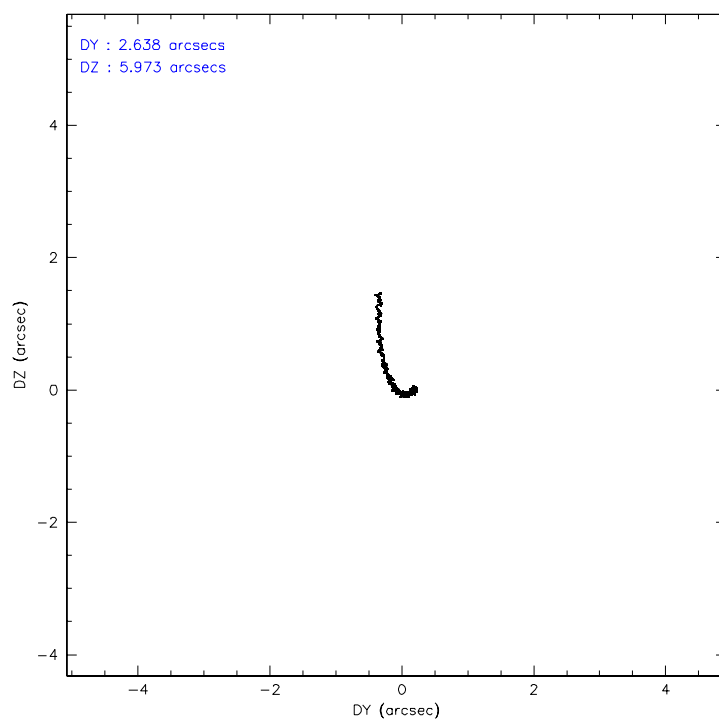
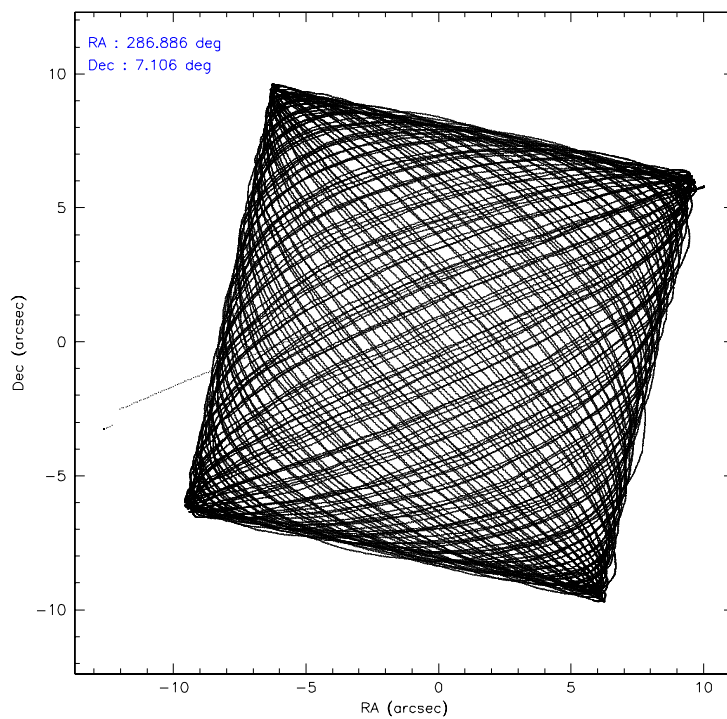
	ccd 2	ccd 3	ccd 5	ccd 6	ccd 7	ccd 8
level 1 events	438313	420458	627451	436999	828828	540977
rejected events	388156	370728	339398	381261	342102	430060
rejected %	88%	88%	54%	87%	41%	79%

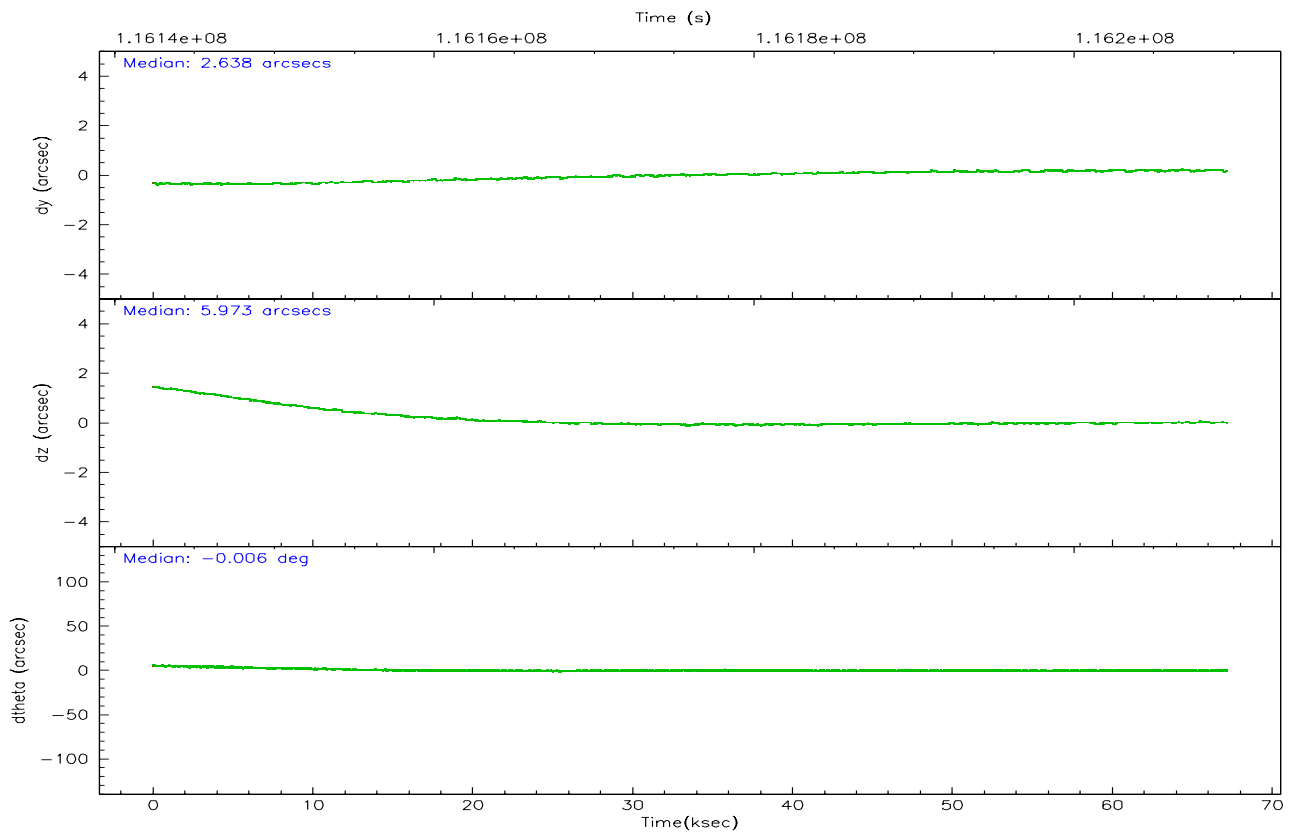
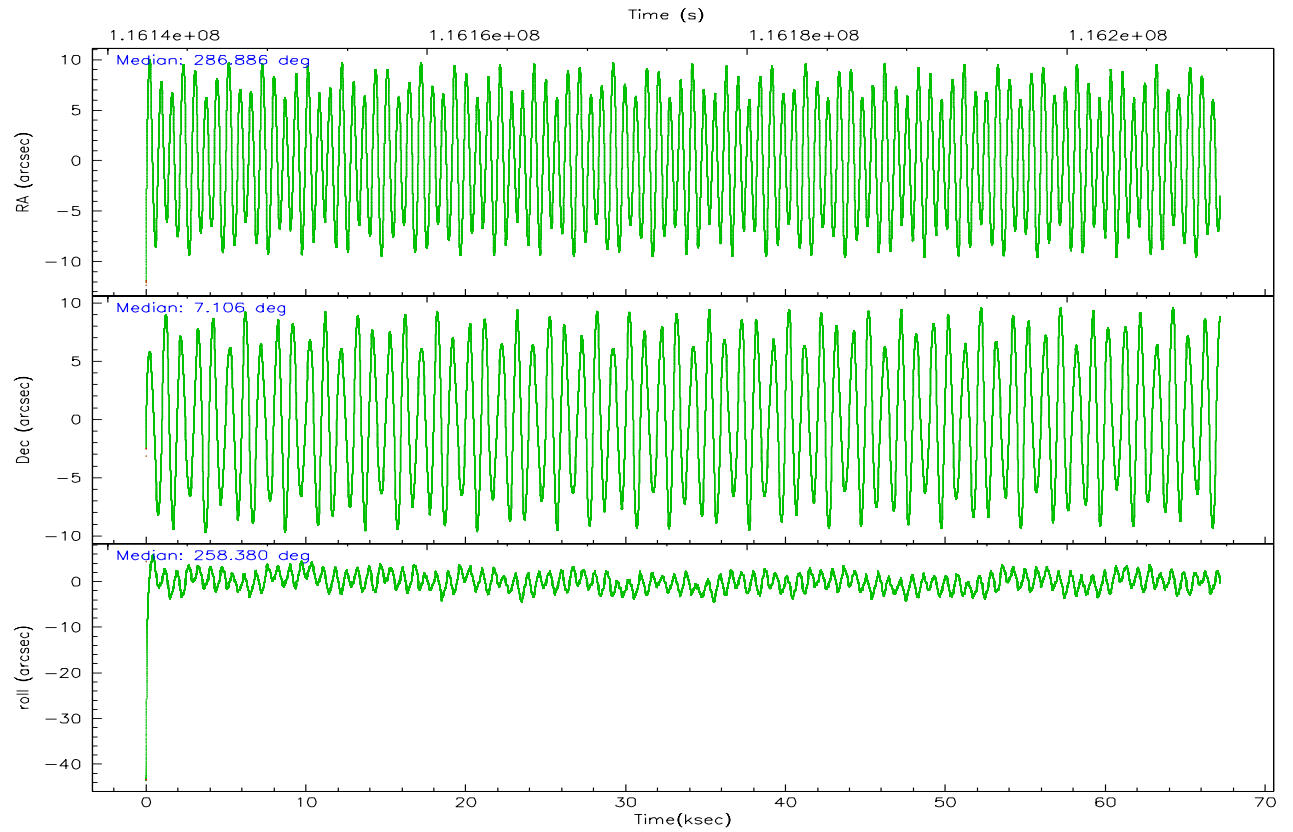
	ccd 2	ccd 3	ccd 5	ccd 6	ccd 7	ccd 8
grade 0 events	21289	22154	41373	25041	81738	36293
	4%	5%	6%	5%	9%	6%
grade 1 events	188	204	432	237	412	328
	0%	0%	0%	0%	0%	0%
grade 2 events	10861	9661	83069	10708	132504	24036
	2%	2%	13%	2%	15%	4%
grade 3 events	4655	4753	6332	5218	41259	11438
	1%	1%	1%	1%	4%	2%
grade 4 events	4708	4633	5565	4944	41255	10663
	1%	1%	0%	1%	4%	1%
grade 5 events	14658	16007	30033	18117	39213	23199
	3%	3%	4%	4%	4%	4%
grade 6 events	8647	8534	151744	9838	190010	28491
	1%	2%	24%	2%	22%	5%
grade 7 events	373307	354512	308903	362896	302437	406529
	85%	84%	49%	83%	36%	75%

2.2 Compared Parameters

Parameter	Planned	Actual	Parameter	Planned	Actual
Instrument	ACIS	ACIS	Obspar format version number	6	6
Detector	ACIS-235678	ACIS-235678	Obspar file type	PREDICTED	ACTUAL
Grating	NONE	NONE	Obspar update status	NONE	UPDATED
Data mode	FAINT	FAINT	Number of optional ACIS chips dropped	0	0
Observation mode	POINTING	POINTING	On-chip summing requested	N	N
Pointing RA	286.877489	286.8864551081975	Subarray requested	NONE	NONE
Pointing Dec	7.131157	7.10538104097853	Alternating exposures requested	N	N
Pointing Roll	258.225970	258.3814759192631	Primary exposure time	0.000000	3.2
SIM focus pos (mm)	-0.684267	-0.6828225247311905			
SIM defocus (mm)	0	0.001444936568705701			
SIM translation stage pos (mm)	-190.132523	-190.1425803651734			
SIM translation stage offset (mm)	0	0.01005778216563158			
Observation start time	116142692.184000	116141679.39751			
Observation start date	2001-09-06T05:50:28	2001-09-06T05:34:39			
Observation end time	116209592.184000	116210341.07523			
Observation end date	2001-09-07T00:25:28	2001-09-07T00:39:01			
Read mode	TIMED	TIMED			

2.3 Aspect



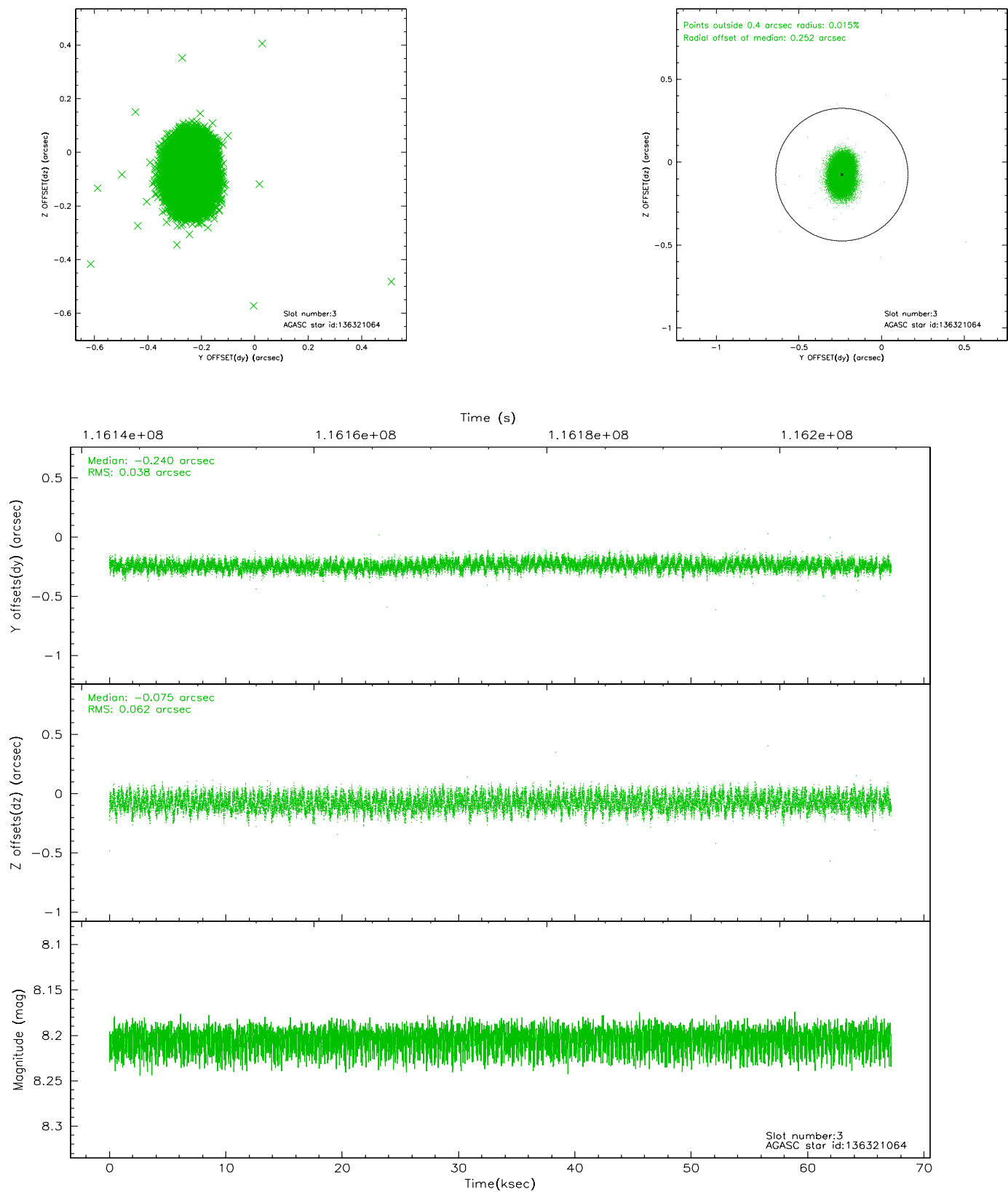


Slot Statistics

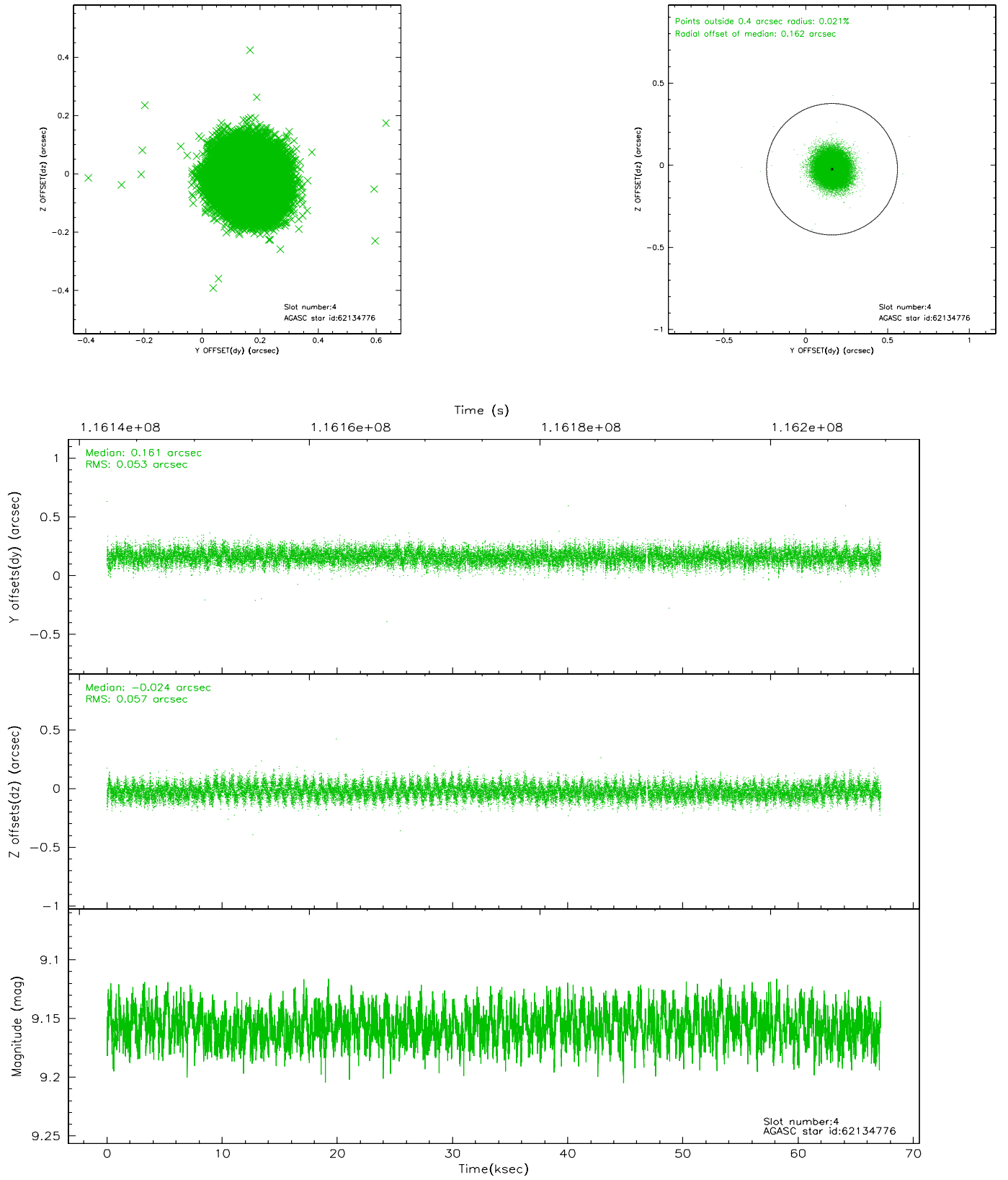
slot	status	id	mag	n_pts	med_dy	med_dz	dr1	dr2	ra	dec	mean_y	mean_z
0	FID	ACIS-S-2	7.11	16387	-0.018	0.032	0.011	0.019	0.000000	0.000000	-755.21	-1727.24
1	FID	ACIS-S-4	7.20	16387	-0.084	-0.001	0.010	0.021	0.000000	0.000000	2157.98	181.34
2	FID	ACIS-S-5	7.24	16388	0.069	-0.024	0.010	0.018	0.000000	0.000000	-1808.08	174.83
3	GUIDE	136321064	8.20	32707	-0.240	-0.075	0.077	0.124	286.410554	7.667399	-1550.45	-2024.54
4	GUIDE	62134776	9.16	32694	0.161	-0.024	0.084	0.133	286.572119	6.645054	1936.21	-711.36
5	GUIDE	62128792	9.45	32756	0.160	0.014	0.098	0.157	286.703487	6.616055	1942.88	-230.09
6	GUIDE	62271584	8.72	32773	-0.022	0.081	0.068	0.109	287.218405	6.430921	2219.04	1709.07
7	GUIDE	136317712	10.20	32746	-0.057	-0.004	0.140	0.231	287.051403	7.690000	-2095.79	197.55

2.4 Star Slots

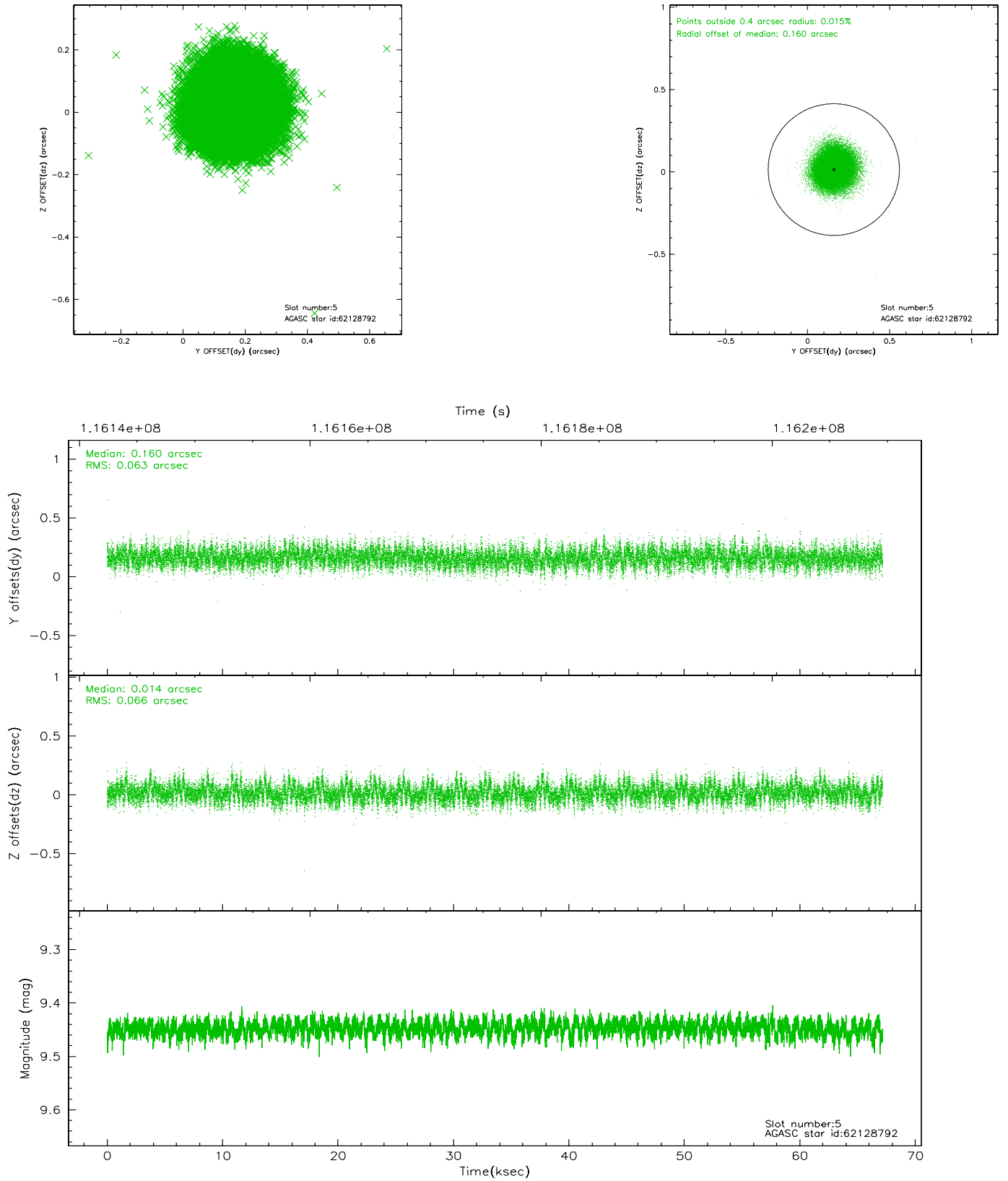
2.4.1 Slot 3



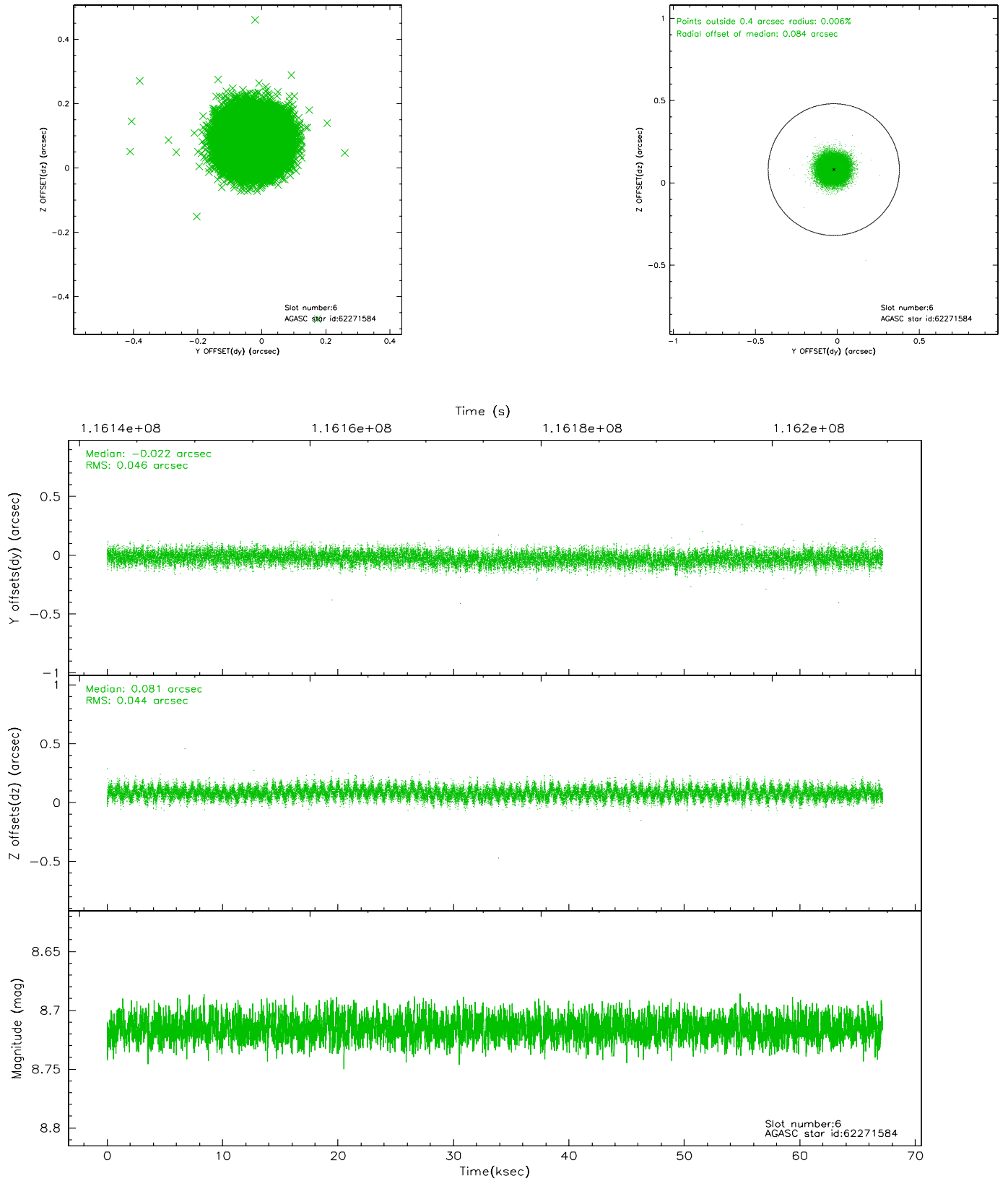
2.4.2 Slot 4



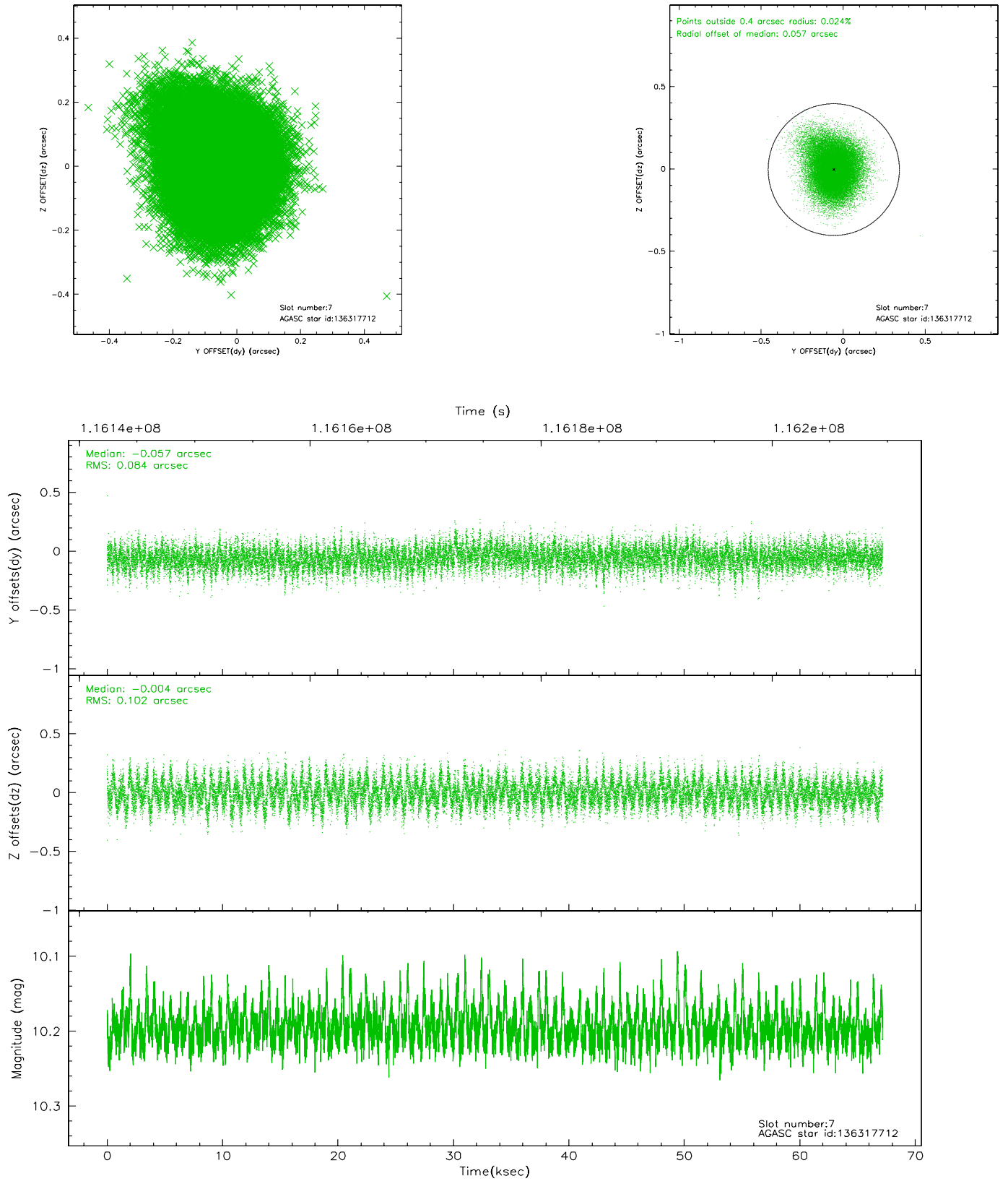
2.4.3 Slot 5



2.4.4 Slot 6

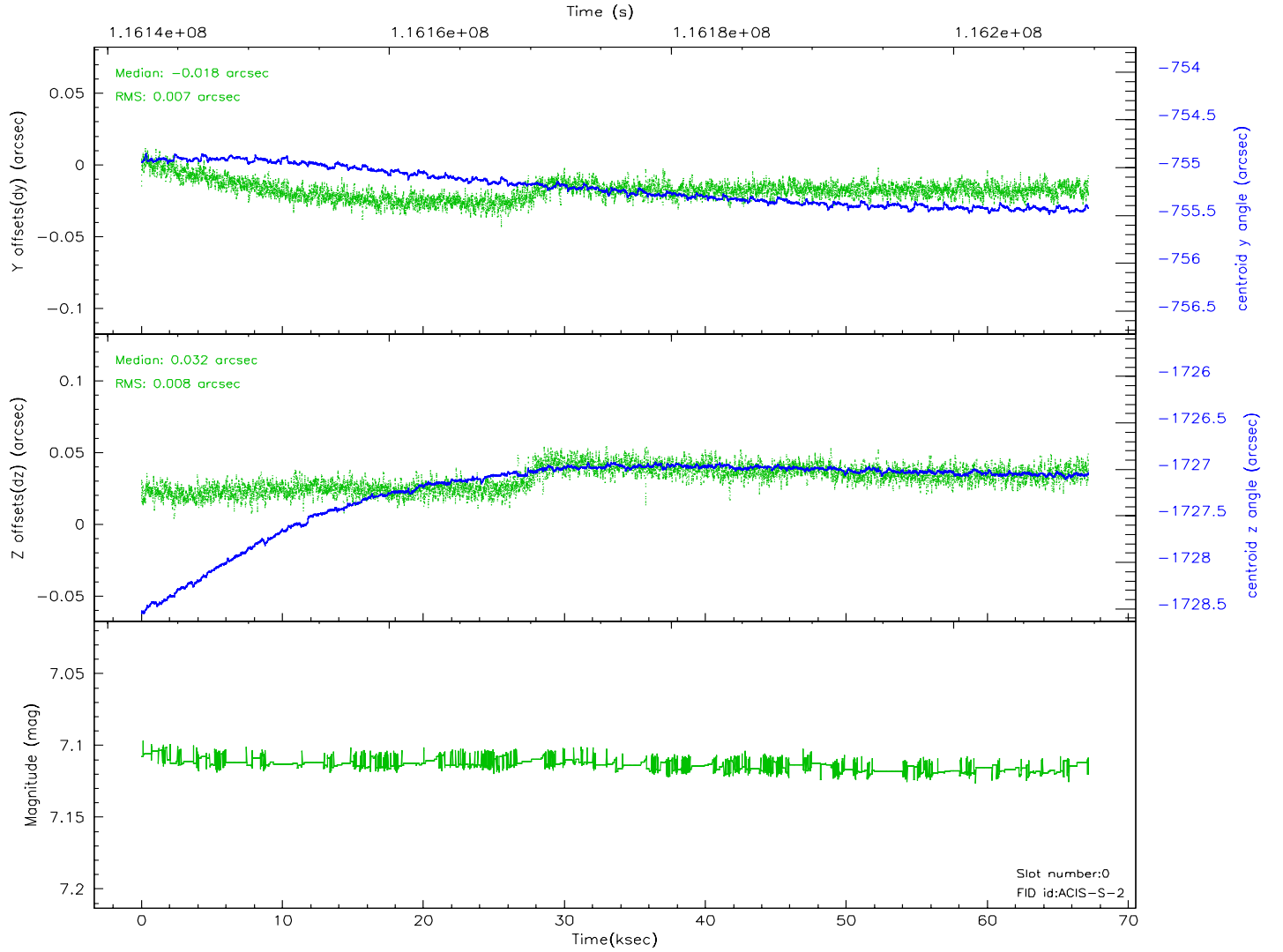
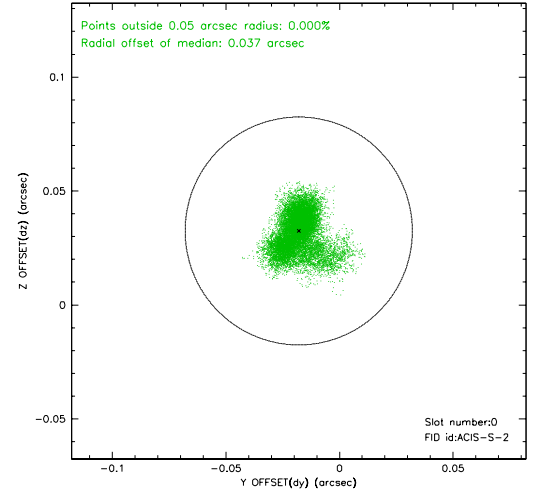
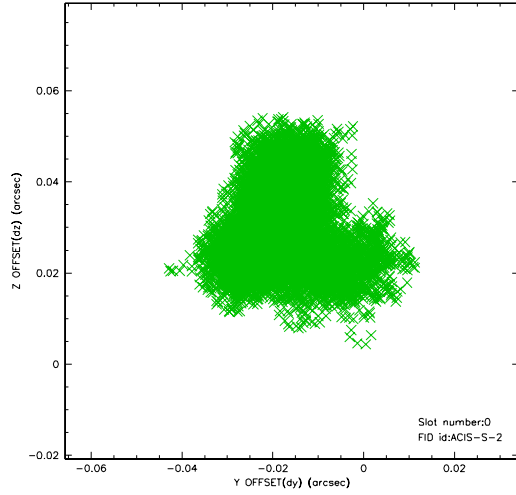


2.4.5 Slot 7

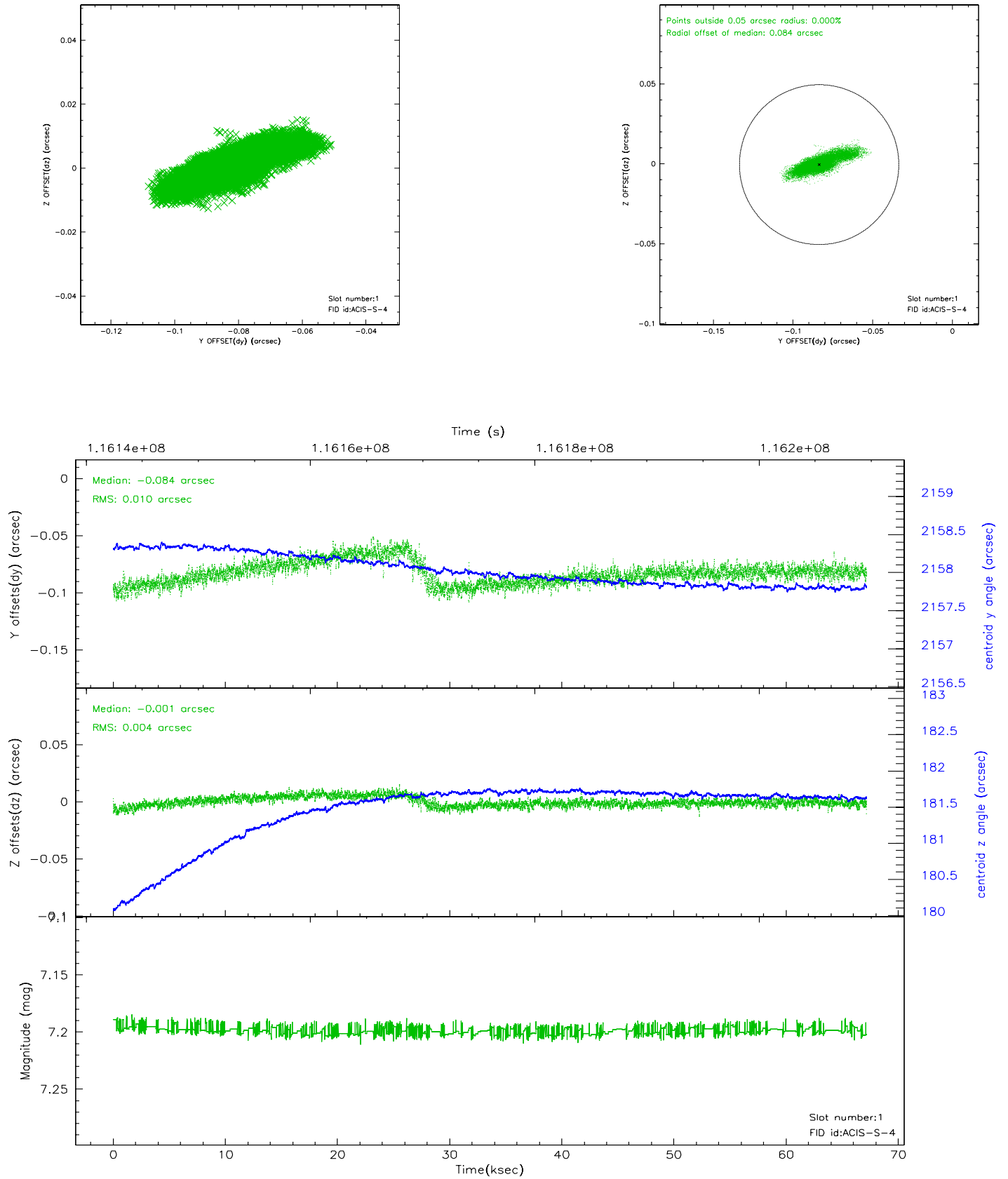


2.5 FID Slots

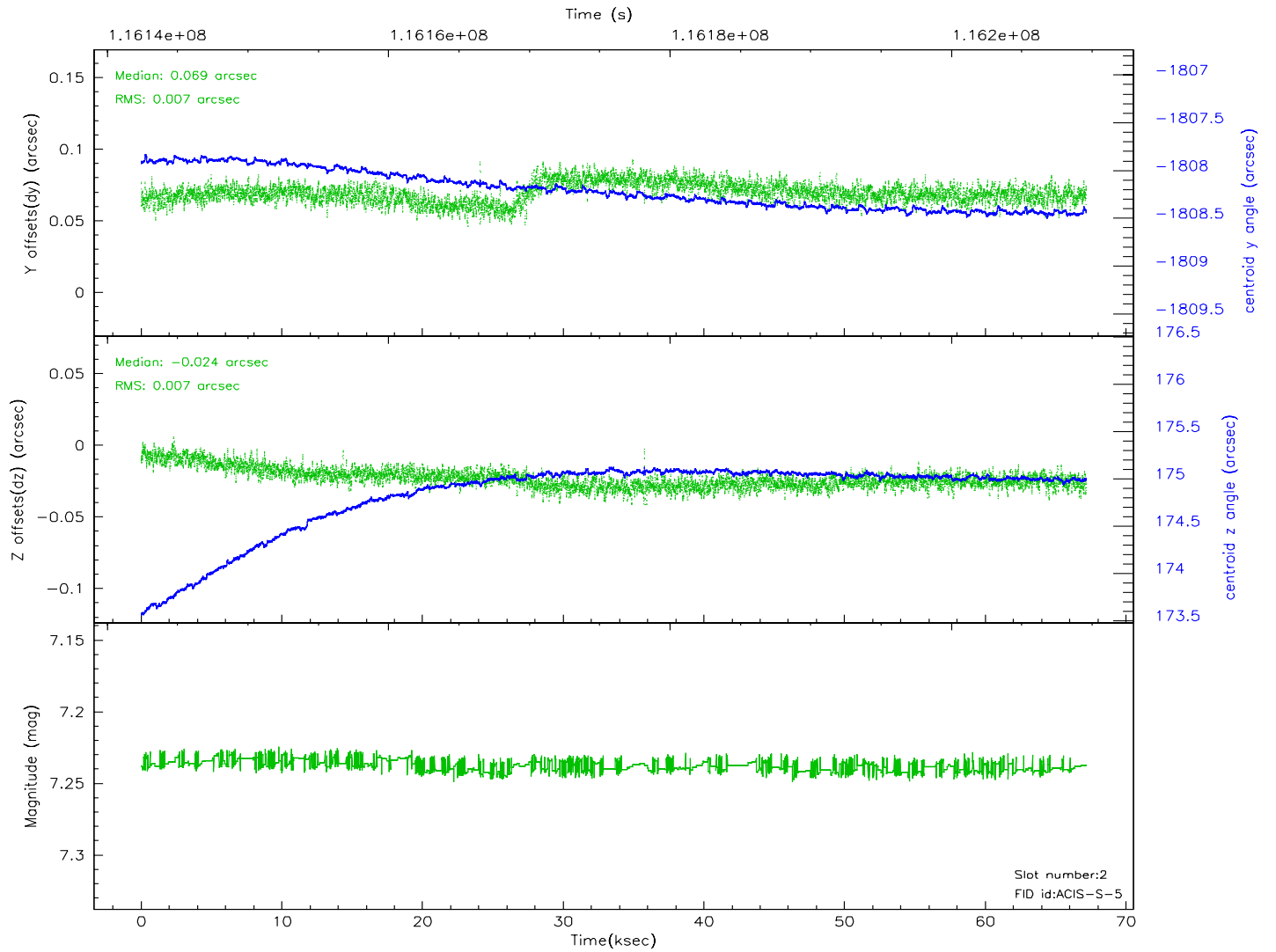
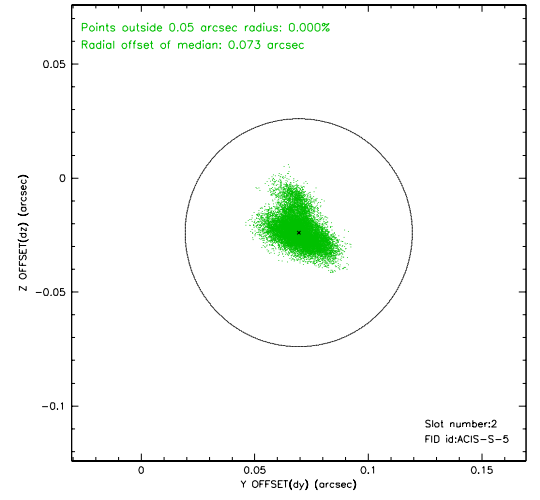
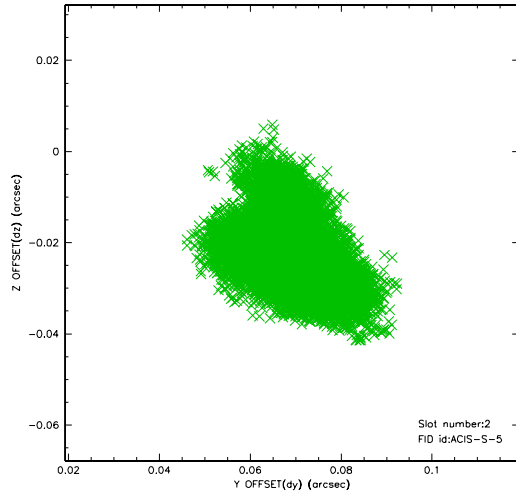
2.5.1 Slot 0



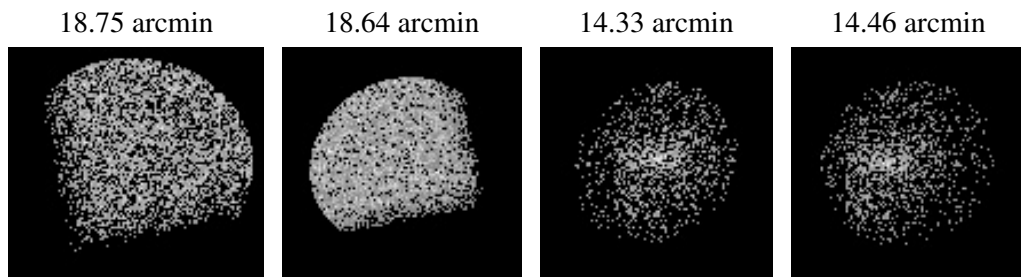
2.5.2 Slot 1



2.5.3 Slot 2



3 Point Sources



A Summary

A.1 Status

V&V Scientist	Beth Sundheim
V&V Date (YYYY-MM-DD)	2007.01.04
V&V Edition	1
V&V Disposition and Status	OK
V&V Charge Time	66.854

A.2 Comments