

V&V Reference Report

L2 ASCDS Version : 8.4.4

Observation 9831 - L2 Version 2
Chandra X-Ray Center

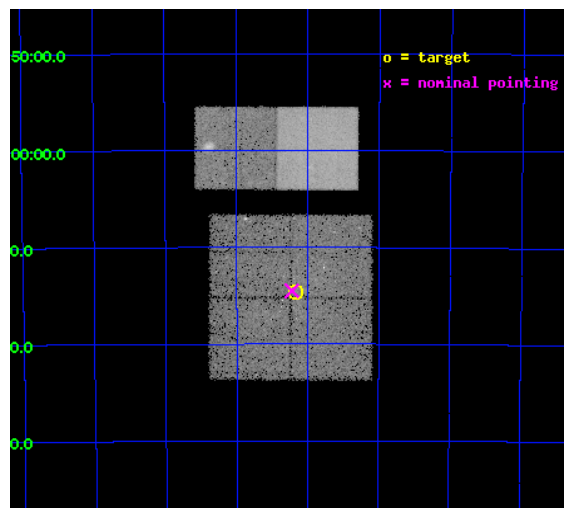
L2 Processing Date : May 10 2012

Contents

1	Front	2
2	OBI	3
2.1	OBI	3
2.1.1	Images	3
2.1.2	Bias	3
2.1.3	Parameters	4
2.1.4	Events	4
2.2	Compared Parameters	5
2.3	Aspect	6
2.4	Star Slots	9
2.4.1	Slot 3	9
2.4.2	Slot 4	10
2.4.3	Slot 5	11
2.4.4	Slot 6	12
2.4.5	Slot 7	13
2.5	FID Slots	14
2.5.1	Slot 0	14
2.5.2	Slot 1	15
2.5.3	Slot 2	16
A	Summary	17
A.1	Status	17
A.2	Comments	17

1 Front

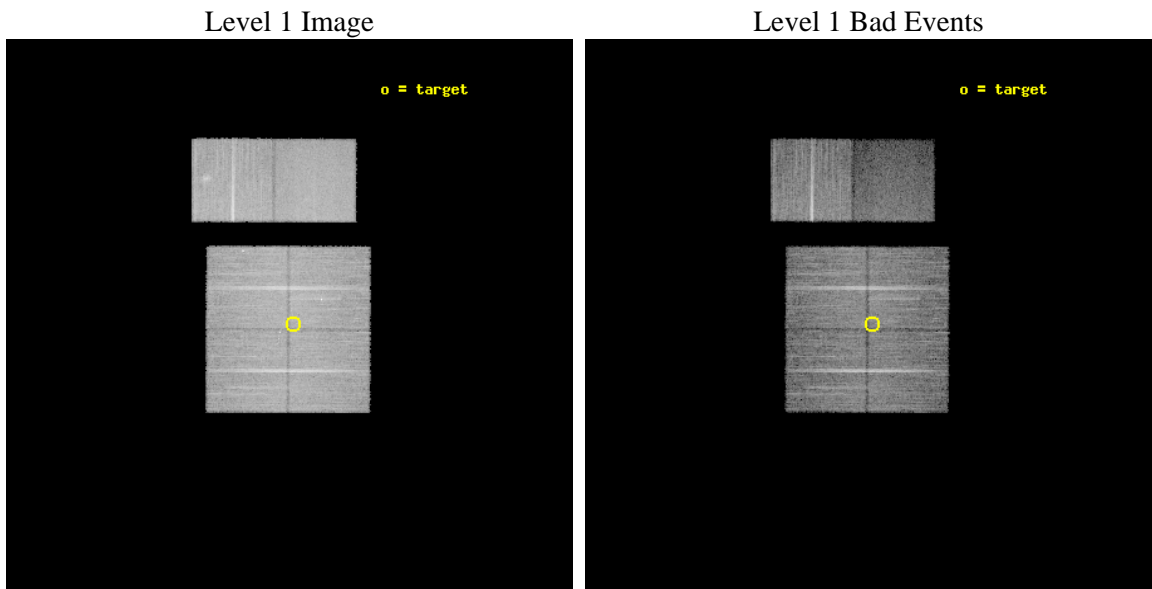
seq_num	900830	Sequence number
obs_id	9831	Observation id
title	The Great Nebula in Carina: Protoplanetary Disks to Starburst Galaxies	Proposal title
observer	Dr. Leisa Townsley	Principal investigator
object	Carina South Pillars Ptg 2	Source name
dtcycle	0	
cycle	P	events from which exps? Prim/Second/Both
ra_targ	160.790417	Observer's specified target RA [deg]
dec_targ	-60.244139	Observer's specified target Dec [deg]
ra_nom	160.80592916095	Nominal RA [deg]
dec_nom	-60.241712709184	Nominal Dec [deg]
roll_nom	0.22216606144145	Nominal Roll [deg]
revision	2	Processing version of data
ontime	16143.999939919	Sum of GTIs [s]
livetime	15939.57489193	Livetime [s]
ontime0	16143.999939919	Sum of GTIs [s]
ontime1	16143.999939919	Sum of GTIs [s]
ontime2	16143.999939919	Sum of GTIs [s]
ontime3	16143.999939919	Sum of GTIs [s]
ontime6	16140.758959651	Sum of GTIs [s]
ontime7	16143.999939919	Sum of GTIs [s]
l2events	145366	Number of level 2 events



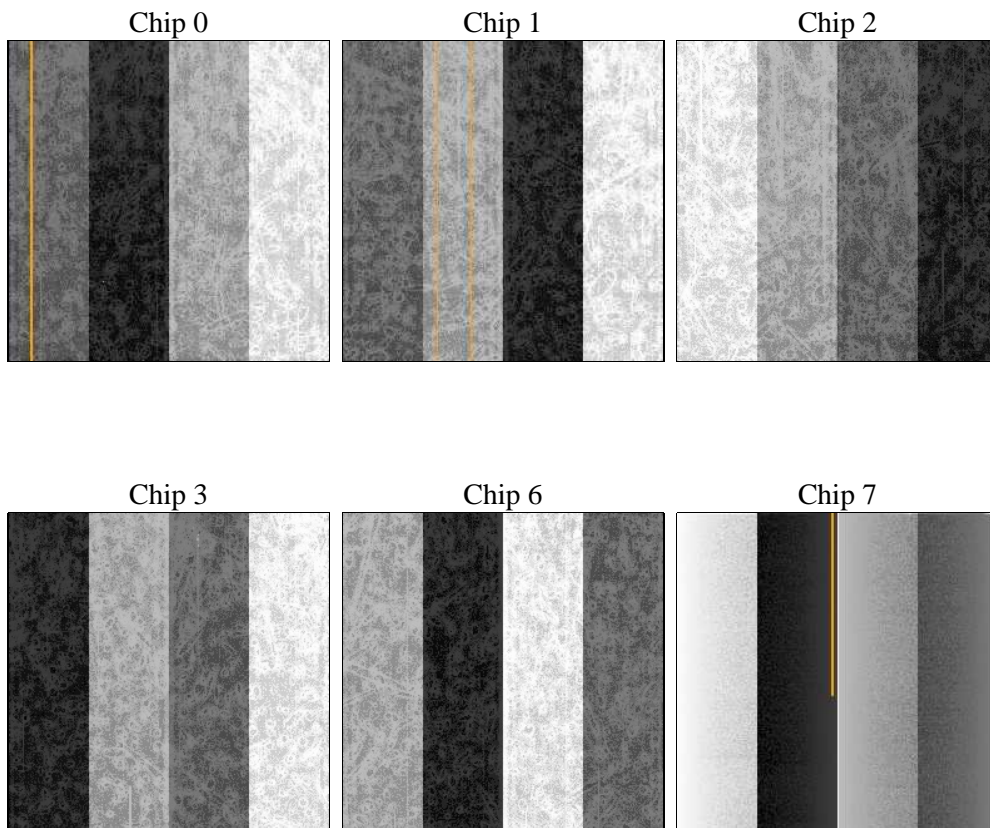
2 OBI

2.1 OBI

2.1.1 Images



2.1.2 Bias



2.1.3 Parameters

obi_num	0	Obi number	sched_exp_time	16000.000000	[s] Scheduled observation exposure time
ascdsver	8.4.4	Processing system revision	ontime	16143.999939919	Sum of GTIs [s]
caldsver	4.4.9	 	ontime0	16143.999939919	Sum of GTIs [s]
date	2012-05-10T21:35:58	Date and time of file creation	ontime1	16143.999939919	Sum of GTIs [s]
revision	2	Processing version of data	ontime2	16143.999939919	Sum of GTIs [s]
			ontime3	16143.999939919	Sum of GTIs [s]
			ontime6	16140.758959651	Sum of GTIs [s]
			ontime7	16143.999939919	Sum of GTIs [s]
			l1events	748000	Number of level 1 events

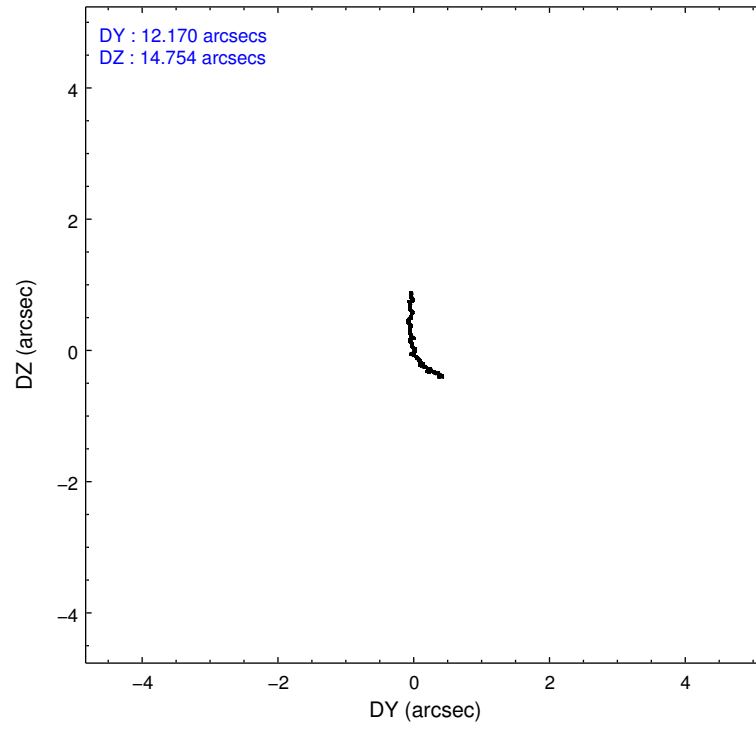
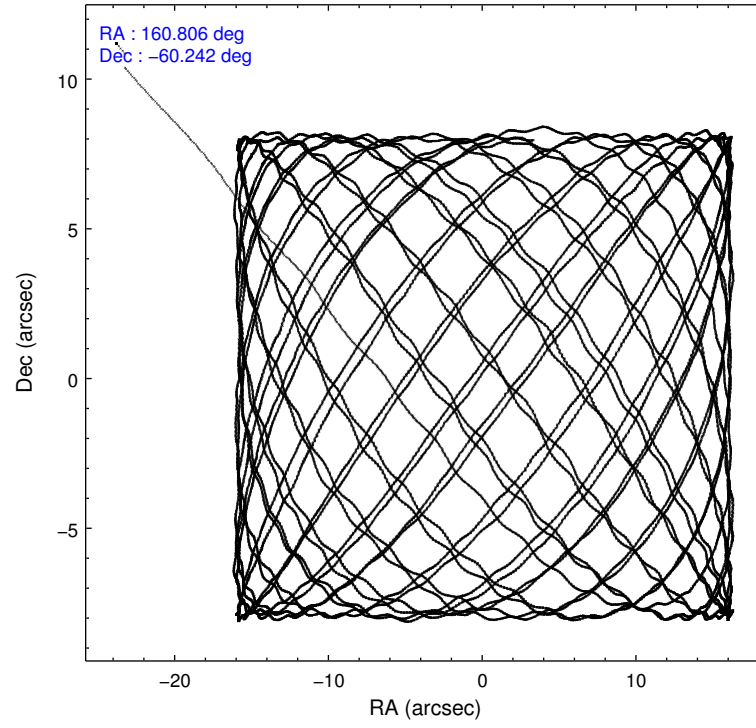
2.1.4 Events

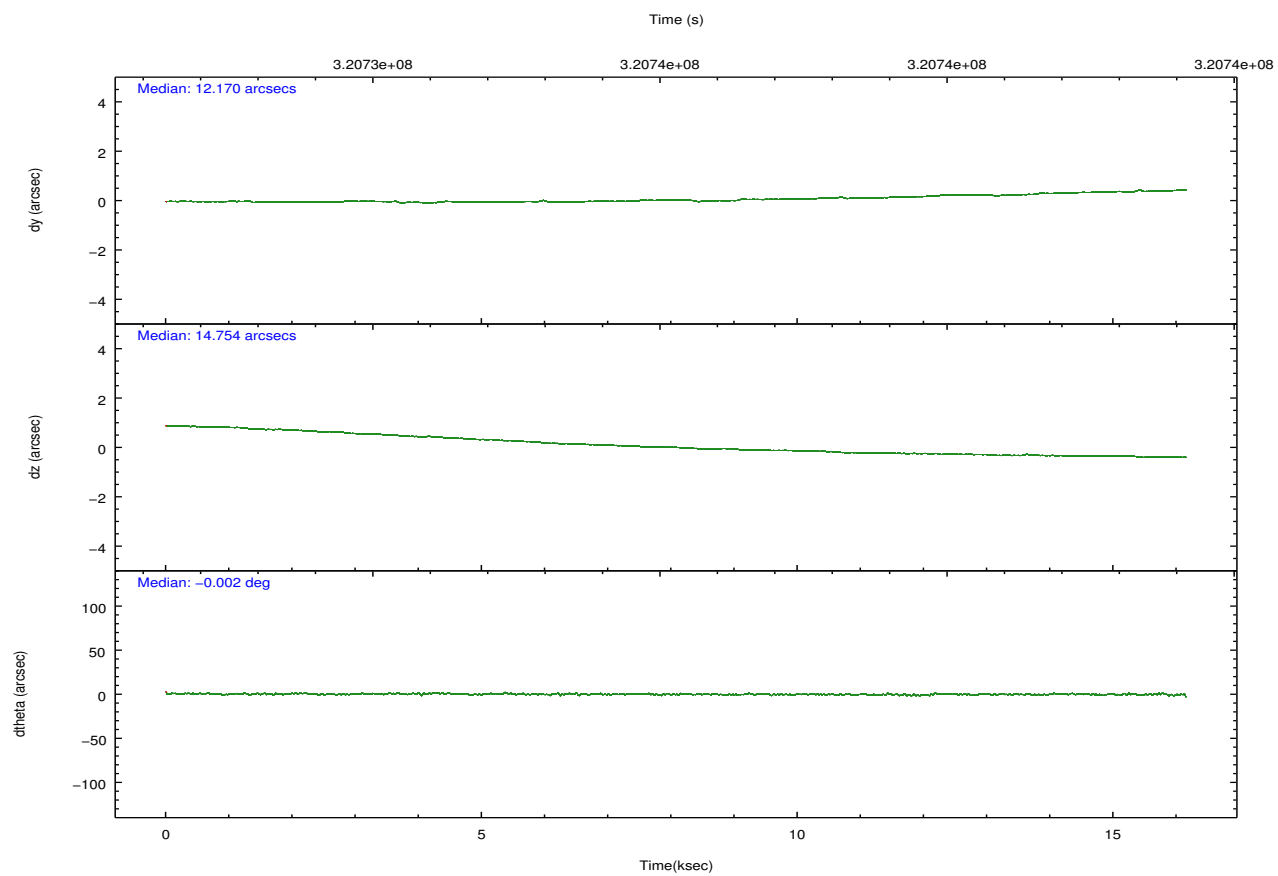
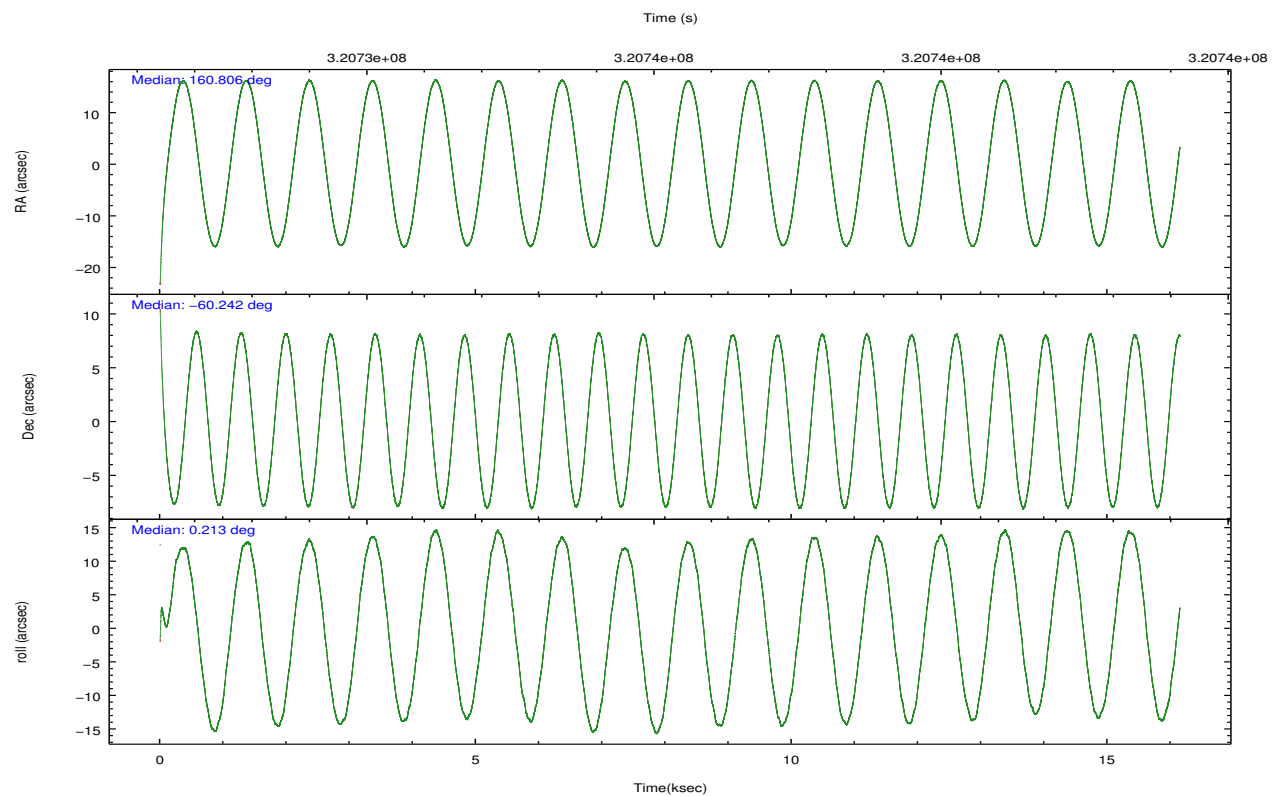
	ccd 0	ccd 1	ccd 2	ccd 3	ccd 6	ccd 7		ccd 0	ccd 1	ccd 2	ccd 3	ccd 6	ccd 7
level 1 events	115907	114806	130501	124197	135595	126994	grade 0 events	7670	7475	8382	9033	12755	9312
rejected events	99477	98059	113681	106880	112855	57555		6%	6%	6%	7%	9%	7%
rejected %	85%	85%	87%	86%	83%	45%	grade 1 events	102	82	98	98	96	195
								0%	0%	0%	0%	0%	0%
							grade 2 events	3355	3236	3362	3085	3762	14958
								2%	2%	2%	2%	2%	11%
							grade 3 events	1456	1587	1408	1409	1550	6692
								1%	1%	1%	1%	1%	5%
							grade 4 events	1393	1613	1325	1408	1645	6563
								1%	1%	1%	1%	1%	5%
							grade 5 events	3556	3945	3337	4229	4215	12517
								3%	3%	2%	3%	3%	9%
							grade 6 events	2571	2854	2362	2396	3055	32005
								2%	2%	1%	1%	2%	25%
							grade 7 events	95804	94014	110227	102539	108517	44752
								82%	81%	84%	82%	80%	35%

2.2 Compared Parameters

Parameter	Planned	Actual	Parameter	Planned	Actual
Instrument	ACIS	ACIS	Obspar format version number	7	7
Detector	ACIS-012367	ACIS-012367	Obspar file type	PREDICTED	ACTUAL
Grating	NONE	NONE	Obspar update status	NONE	UPDATED
Data mode	VFAINT	VFAINT	CCD I0 on	Y	Y
Observation mode	POINTING	POINTING	CCD I1 on	Y	Y
[deg] Pointing RA	160.758160	160.805929160953	CCD I2 on	Y	Y
[deg] Pointing Dec	-60.255637	-60.24171270918393	CCD I3 on	Y	Y
[deg] Pointing Roll	359.971989	0.2221660614414505	CCD S0 on	N	N
[mm] SIM focus pos	-0.782348	-0.7809083437167272	CCD S1 on	N	N
[mm] SIM defocus	0	0.001439871863259334	CCD S2 on	O1	Y
[mm] SIM translation stage pos	-233.592463	-233.5874344608287	CCD S3 on	O2	Y
[mm] SIM translation stage offset	0	-0.005018542100998502	CCD S4 on	N	N
[s] Observation start time (MET)	320727356.184000	320726291.89227	CCD S5 on	N	N
Observation start date	2008-03-01T02:54:51	2008-03-01T02:38:11	Number of optional ACIS chips dropped	0	0
[s] Observation end time (MET)	320743356.184000	320744423.11815	On-chip summing requested	N	N
Observation end date	2008-03-01T07:21:31	2008-03-01T07:40:23	Subarray requested	NONE	NONE
Read mode	TIMED	TIMED	Alternating exposures requested	N	N
			[s] Primary exposure time	0.000000	3.2

2.3 Aspect



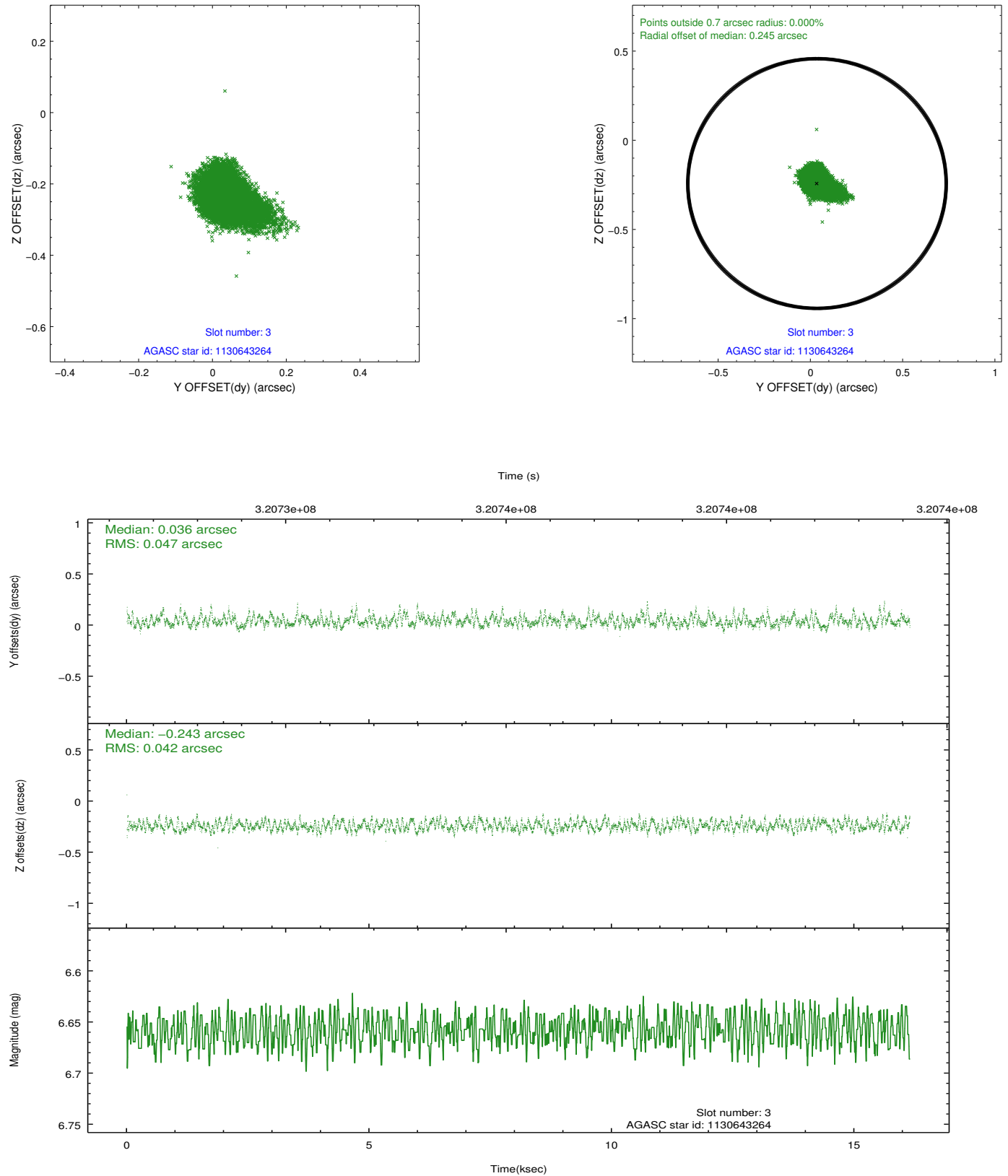


Slot Statistics

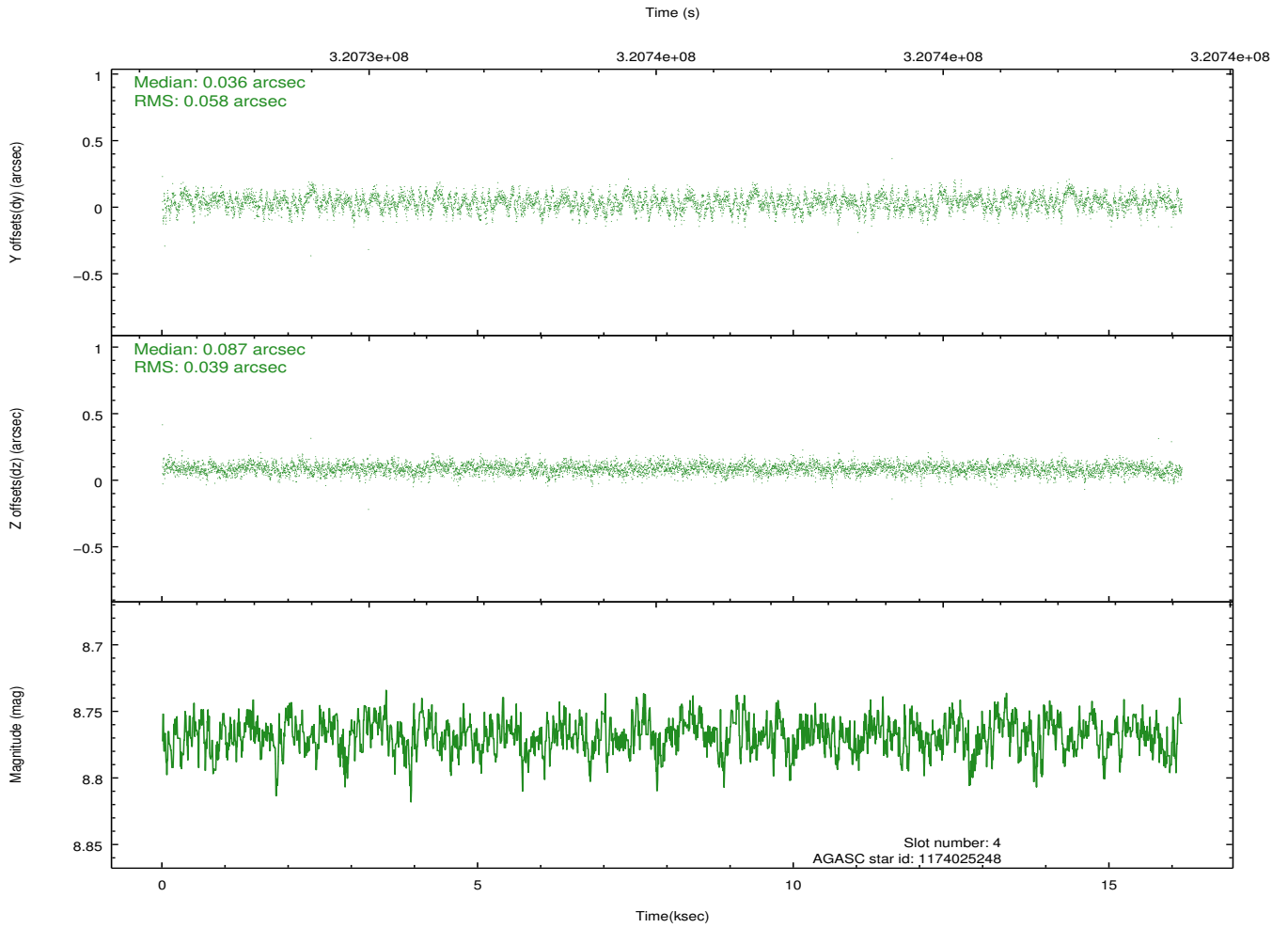
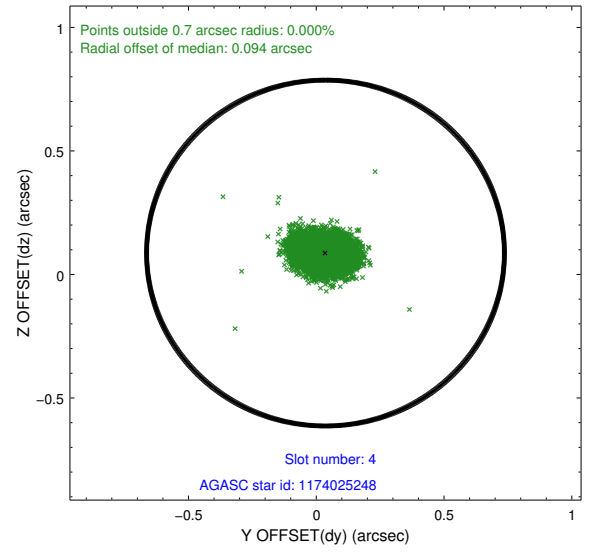
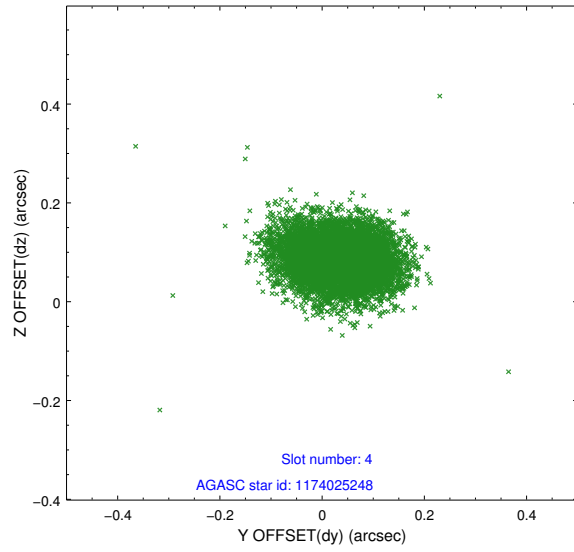
slot	status	id	mag	n_pts	med_dy	med_dz	dr1	dr2	ra	dec	mean_y	mean_z
0	FID	ACIS-I-1	7.23	3939	-0.022	0.002	0.023	0.062	0.000000	0.000000	927.27	-838.46
1	FID	ACIS-I-4	7.16	3939	0.130	0.034	0.022	0.041	0.000000	0.000000	2147.63	1061.24
2	FID	ACIS-I-5	7.21	3938	-0.206	0.036	0.015	0.024	0.000000	0.000000	-1820.56	1059.44
3	GUIDE	1130643264	6.66	7878	0.036	-0.243	0.065	0.109	160.322990	-59.676912	-791.96	2080.36
4	GUIDE	1174025248	8.77	7872	0.036	0.087	0.072	0.122	161.784801	-60.573378	1816.79	-1156.22
5	GUIDE	1174042520	8.70	7873	-0.168	0.051	0.077	0.129	161.882835	-60.770414	1978.66	-1868.65
6	GUIDE	1174043408	8.77	7871	-0.117	0.128	0.077	0.123	161.559146	-60.825256	1407.49	-2058.12
7	GUIDE	1174020184	8.13	7871	0.210	-0.024	0.055	0.091	159.502388	-60.147833	-2249.78	365.20

2.4 Star Slots

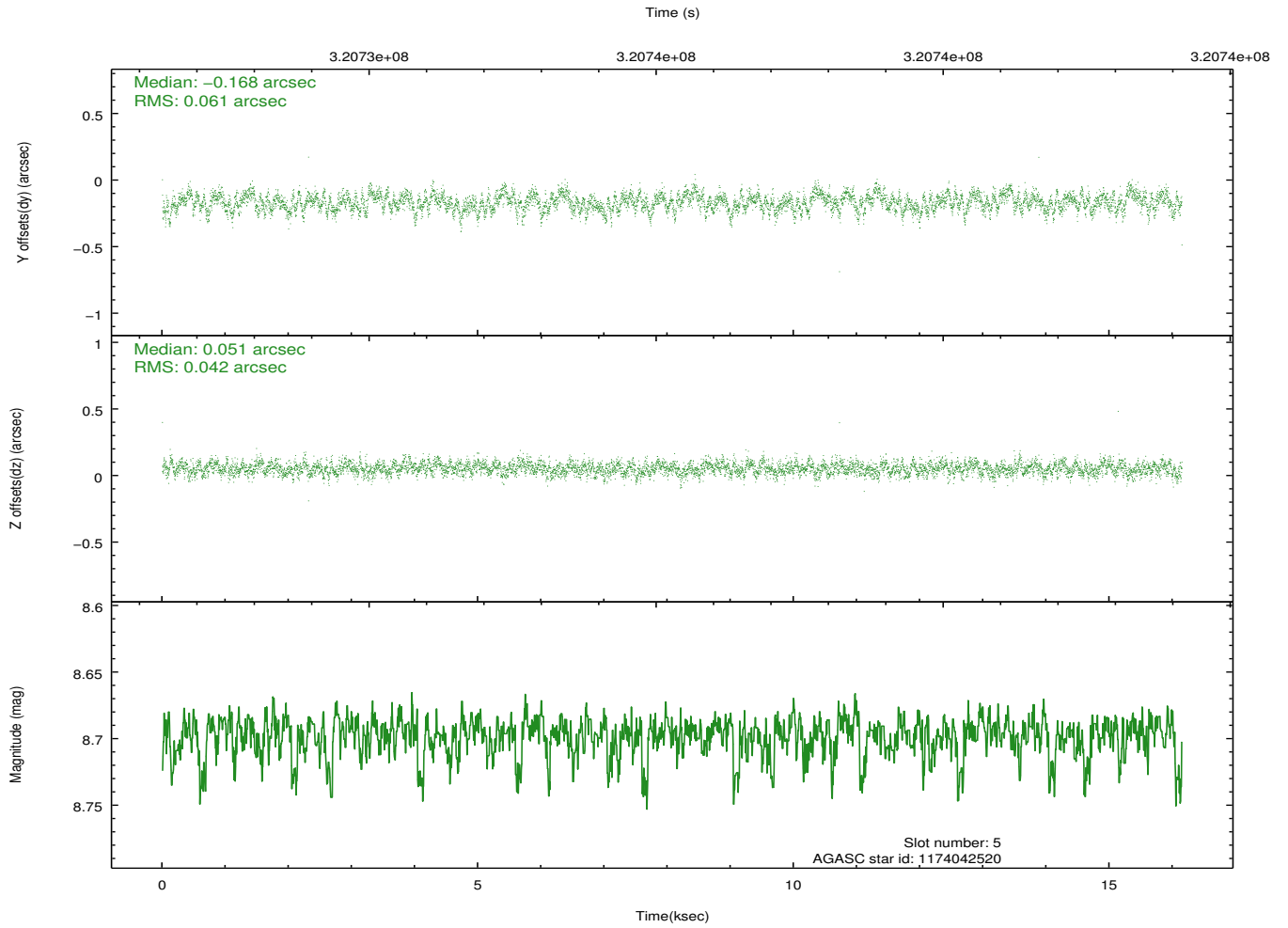
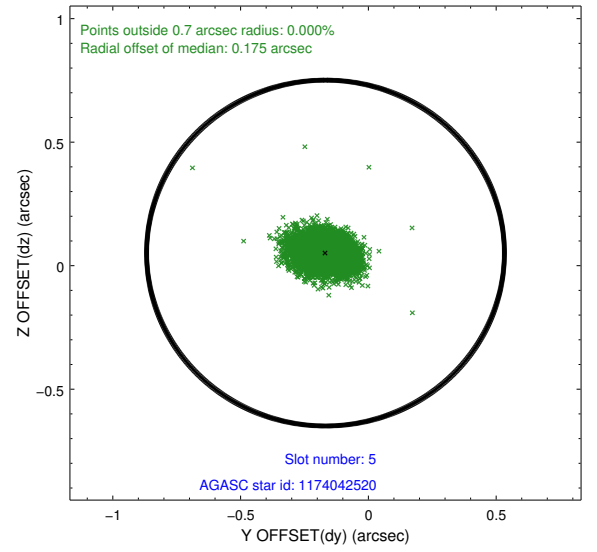
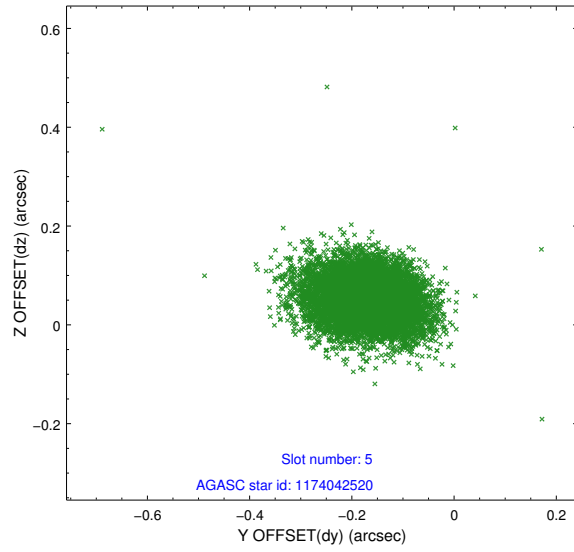
2.4.1 Slot 3



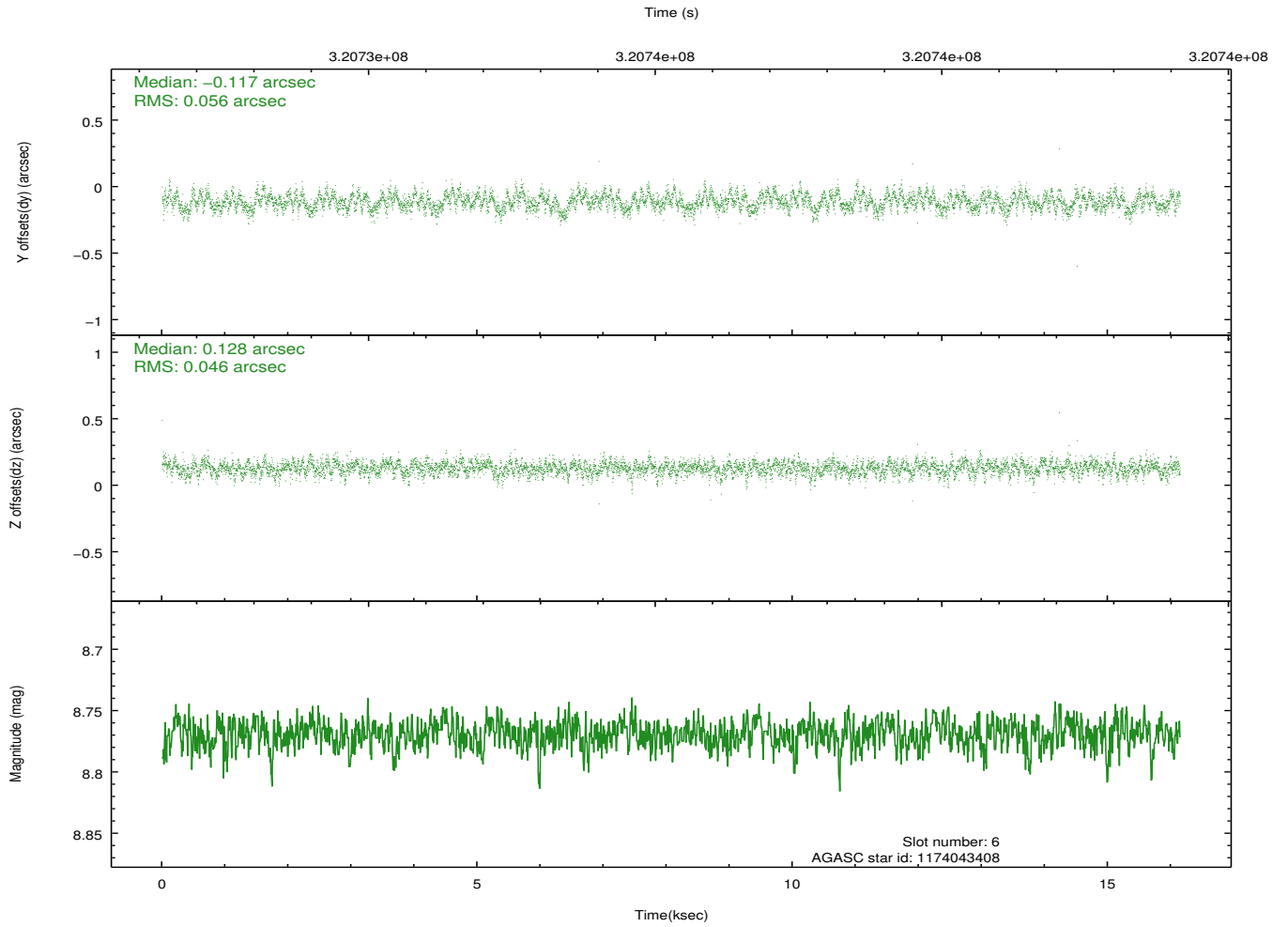
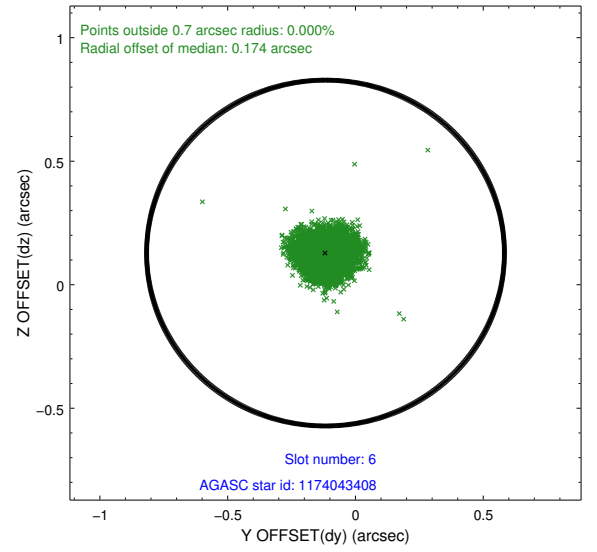
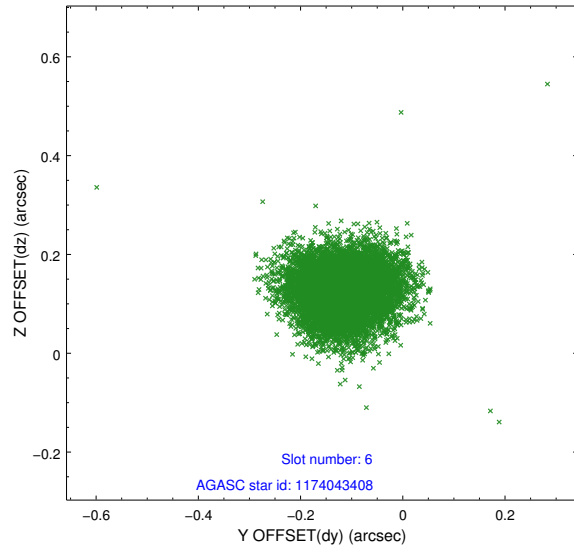
2.4.2 Slot 4



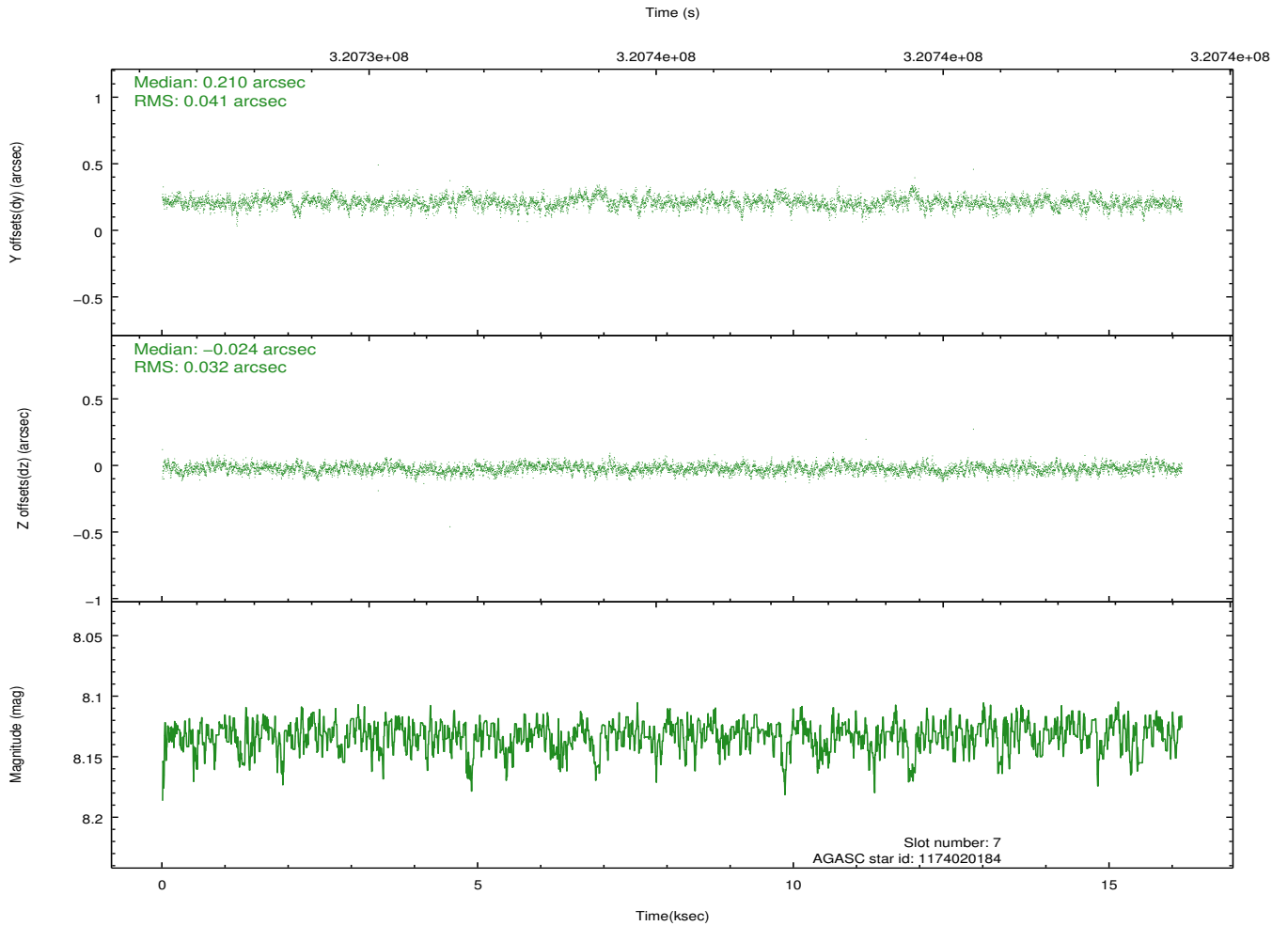
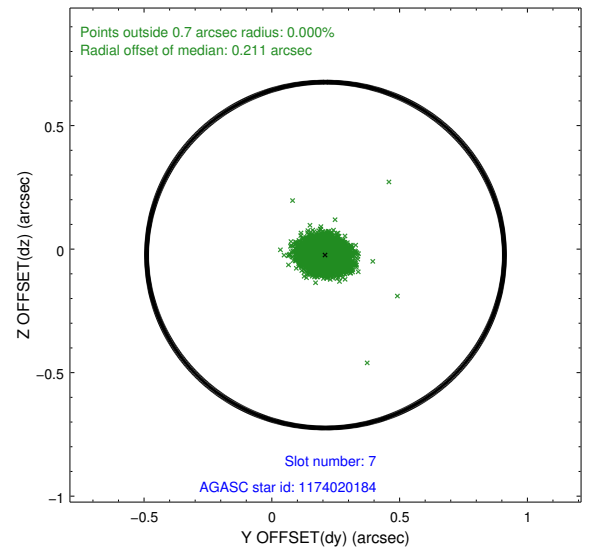
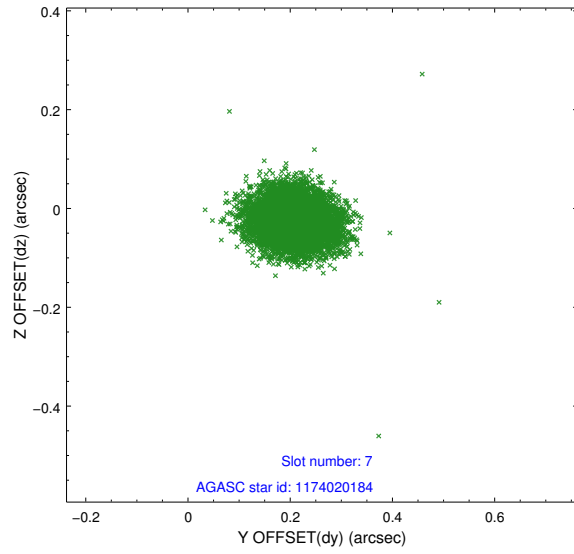
2.4.3 Slot 5



2.4.4 Slot 6

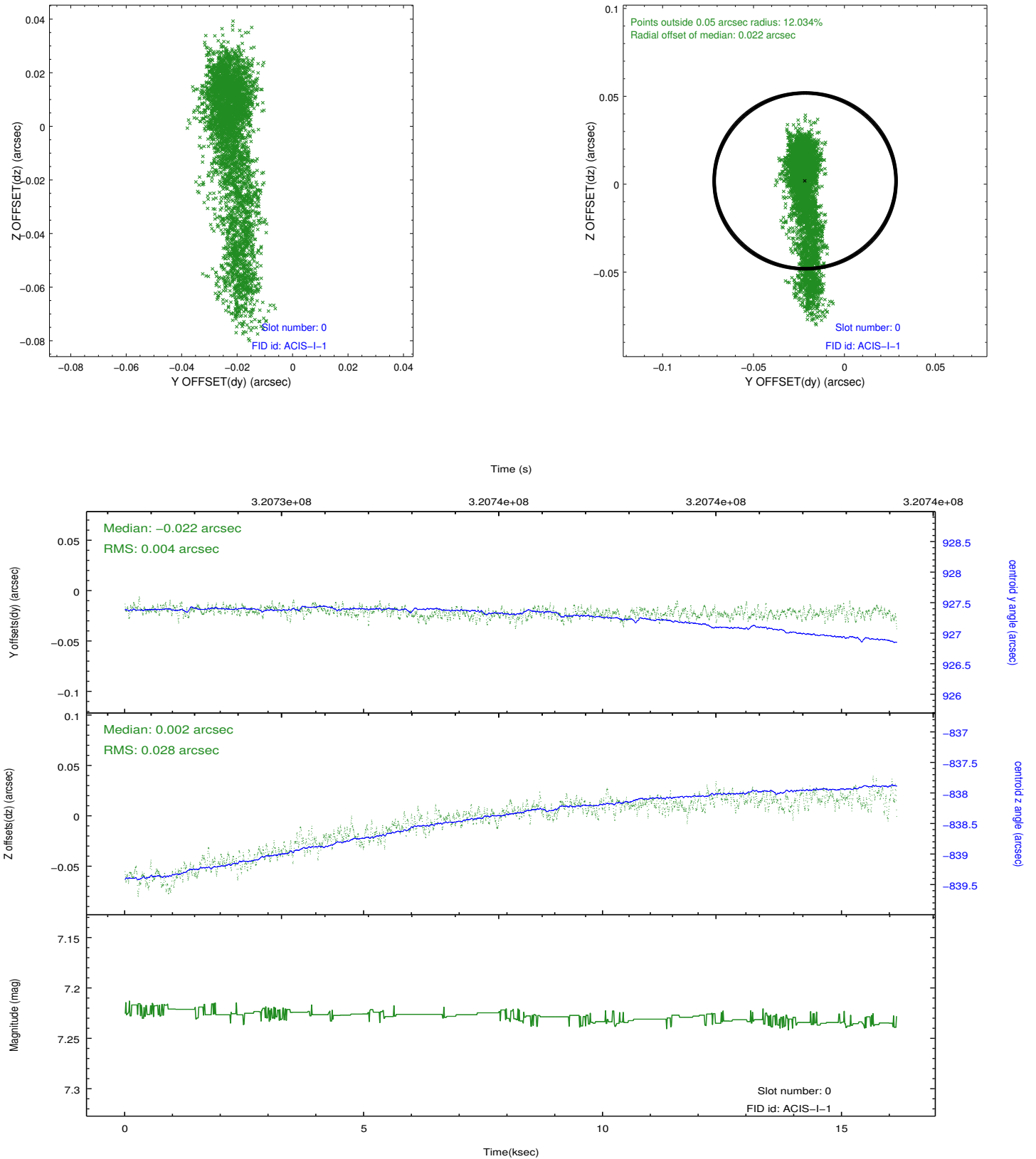


2.4.5 Slot 7

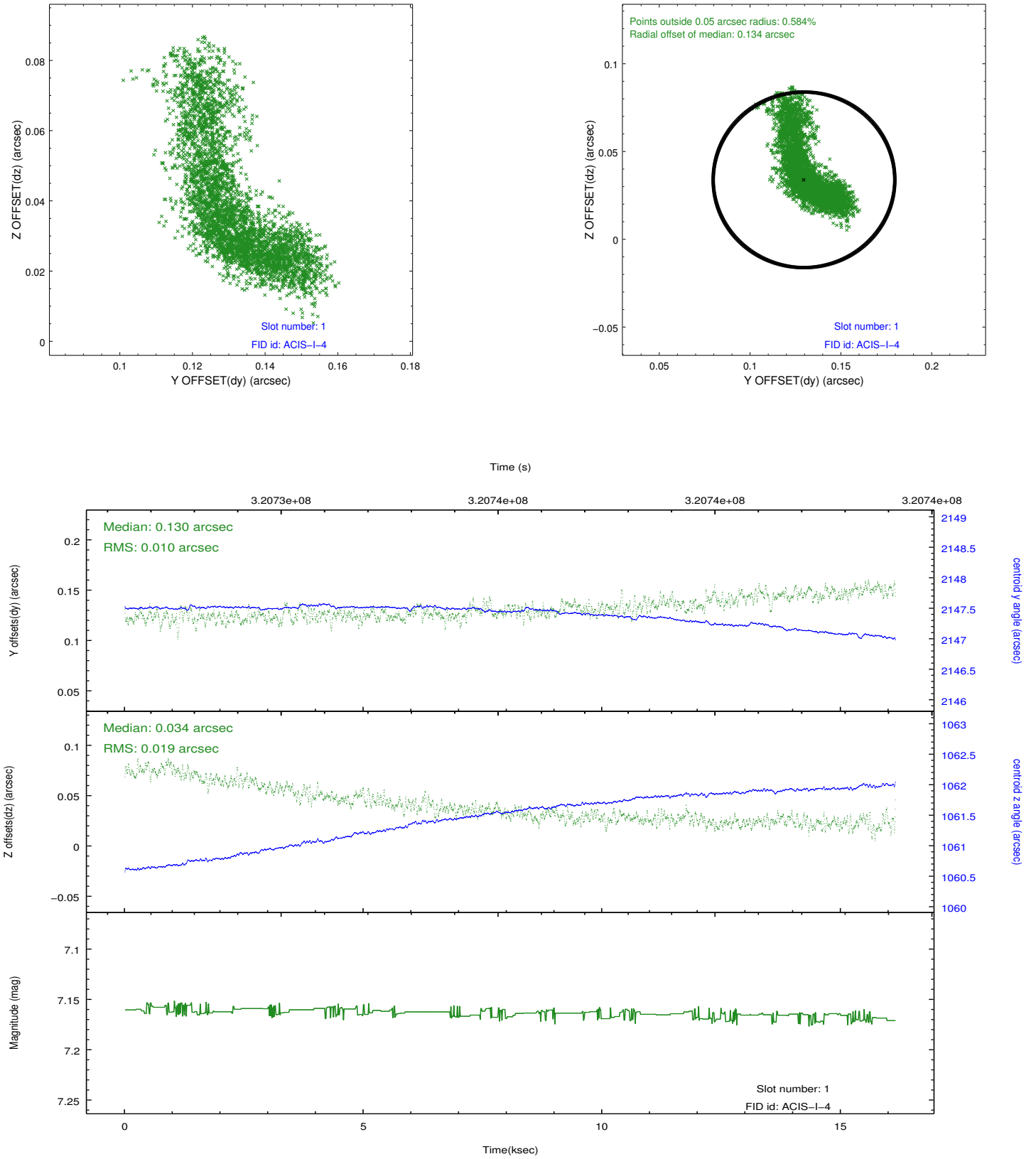


2.5 FID Slots

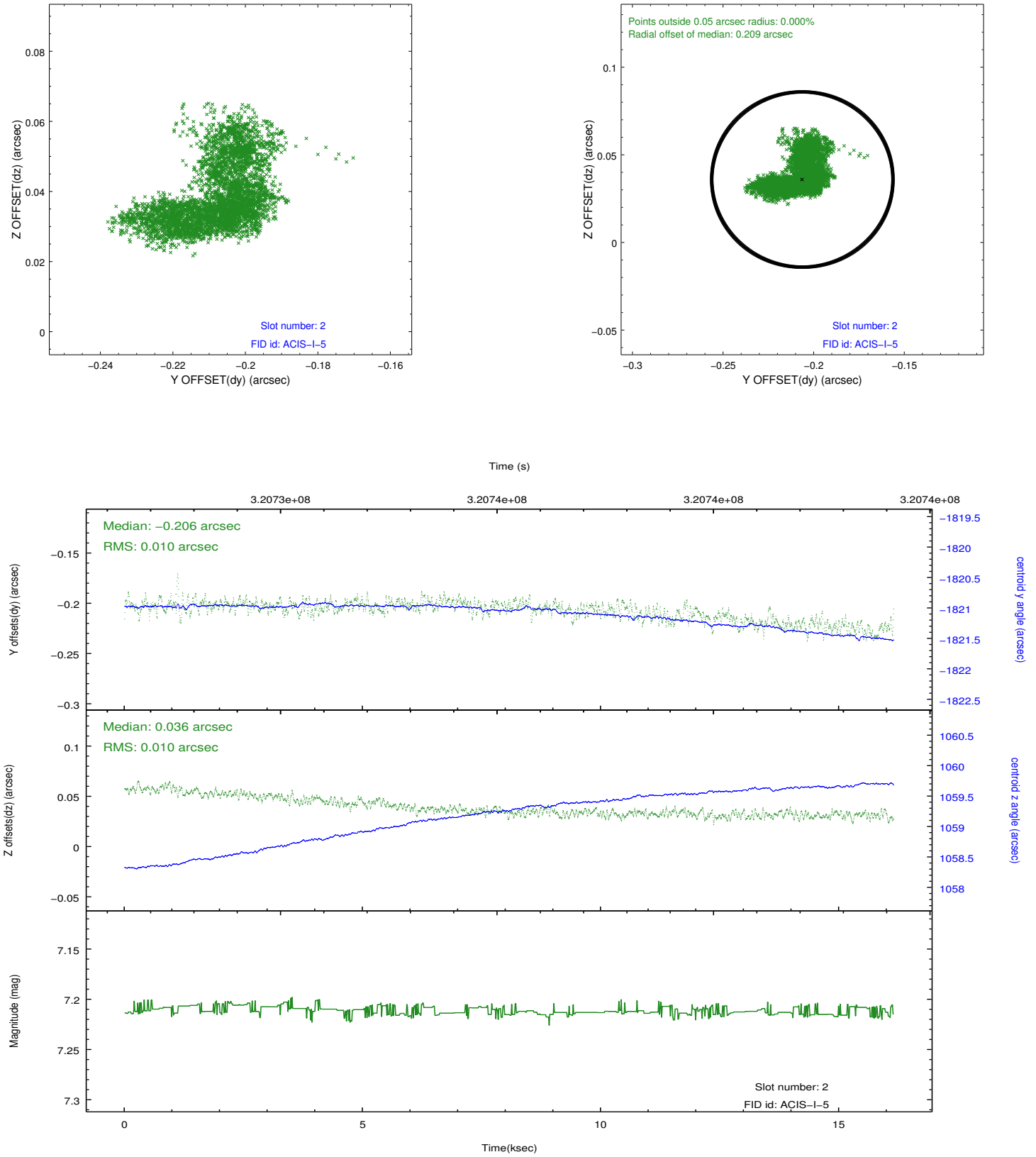
2.5.1 Slot 0



2.5.2 Slot 1



2.5.3 Slot 2



A Summary

A.1 Status

V&V Scientist	Jen Lauer
V&V Date (YYYY-MM-DD)	2012.05.14
V&V Edition	1
V&V Disposition and Status	OK
V&V Charge Time	16.1439999

A.2 Comments