

V&V Reference Report

L2 ASCDS Version : 8.4.5

Observation 981 - L2 Version 3
Chandra X-Ray Center

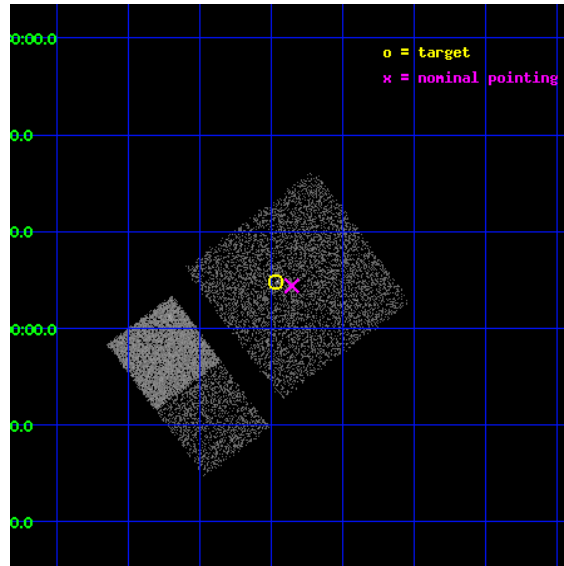
L2 Processing Date : Sep 20 2012

Contents

1	Front	2
2	OBI	3
2.1	OBI	3
2.1.1	Images	3
2.1.2	Bias	3
2.1.3	Parameters	4
2.1.4	Events	4
2.2	Compared Parameters	5
2.3	Aspect	6
2.4	Star Slots	9
2.4.1	Slot 3	9
2.4.2	Slot 4	10
2.4.3	Slot 5	11
2.4.4	Slot 6	12
2.4.5	Slot 7	13
2.5	FID Slots	14
2.5.1	Slot 0	14
2.5.2	Slot 1	15
2.5.3	Slot 2	16
A	Summary	17
A.1	Status	17
A.2	Comments	17

1 Front

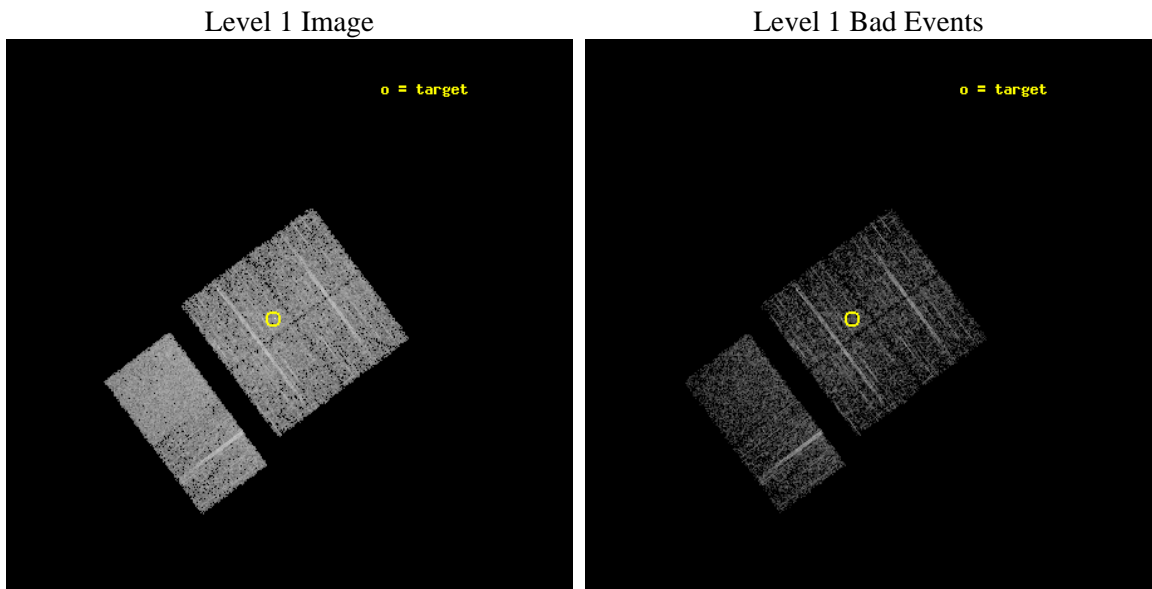
seq_num	200088	Sequence number
obs_id	981	Observation id
title	OBSERVATION OF SCO-CEN OUTLYERS	Proposal title
observer	Professor Gordon Garmire	Principal investigator
object	HD141569	Source name
dtcycle	0	
cycle	P	events from which exps? Prim/Second/Both
ra_targ	237.490833	Observer's specified target RA [deg]
dec_targ	-3.921111	Observer's specified target Dec [deg]
ra_nom	237.46349175068	Nominal RA [deg]
dec_nom	-3.9268859348994	Nominal Dec [deg]
roll_nom	233.24059216047	Nominal Roll [deg]
revision	3	Processing version of data
ontime	2952.9087986052	Sum of GTIs [s]
livetime	2915.5172893691	Livetime [s]
ontime0	2952.7856786102	Sum of GTIs [s]
ontime1	2952.8267186135	Sum of GTIs [s]
ontime2	2952.8677586168	Sum of GTIs [s]
ontime3	2952.9087986052	Sum of GTIs [s]
ontime6	2952.9908786118	Sum of GTIs [s]
ontime7	2952.9498386085	Sum of GTIs [s]
l2events	19681	Number of level 2 events



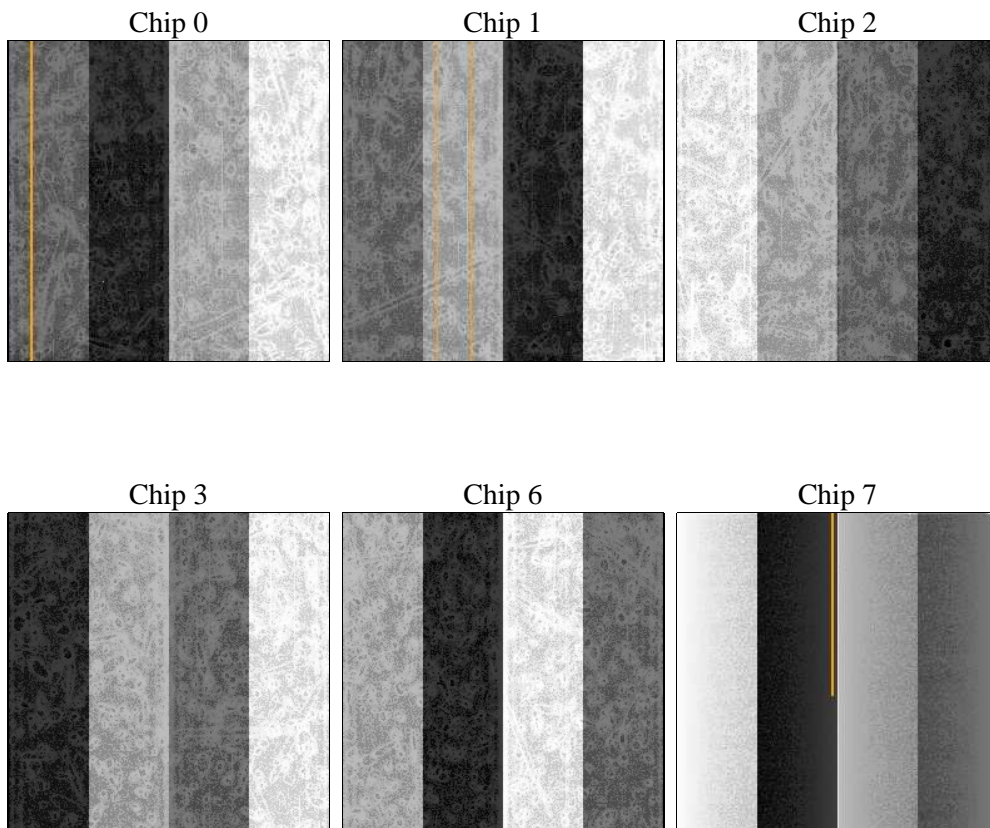
2 OBI

2.1 OBI

2.1.1 Images



2.1.2 Bias



2.1.3 Parameters

obi_num	0	Obi number	sched_exp_time	2939.601000	[s] Scheduled observation exposure time
ascdsver	8.4.5	Processing system revision	ontime	2952.9087986052	Sum of GTIs [s]
caldsver	4.5.1.1	 	ontime0	2952.7856786102	Sum of GTIs [s]
date	2012-09-20T04:41:41	Date and time of file creation	ontime1	2952.8267186135	Sum of GTIs [s]
revision	3	Processing version of data	ontime2	2952.8677586168	Sum of GTIs [s]
			ontime3	2952.9087986052	Sum of GTIs [s]
			ontime6	2952.9908786118	Sum of GTIs [s]
			ontime7	2952.9498386085	Sum of GTIs [s]
			l1events	119738	Number of level 1 events

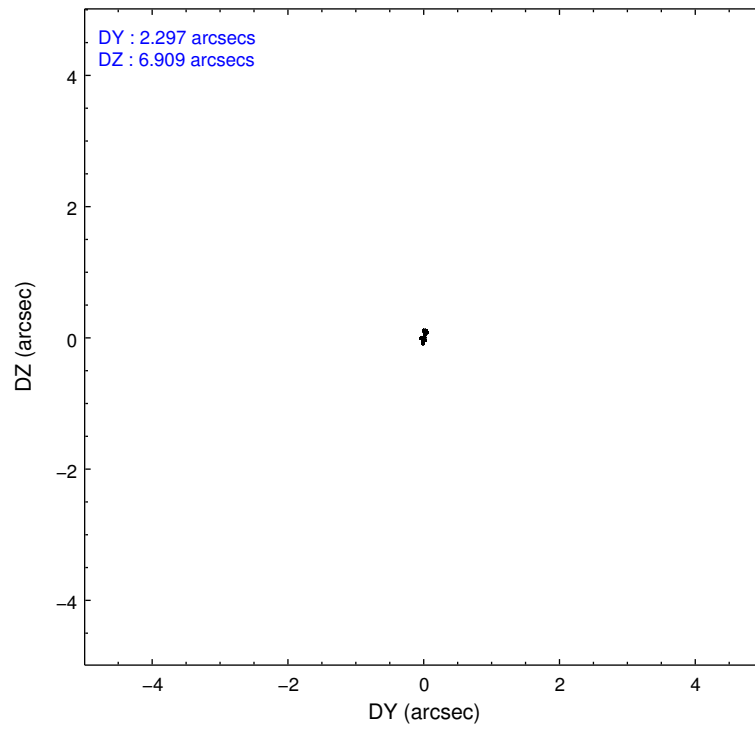
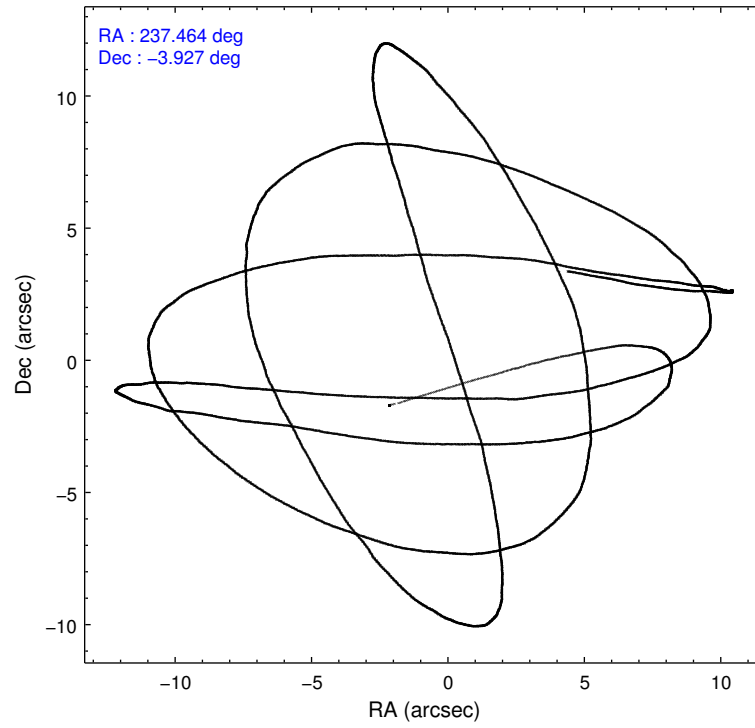
2.1.4 Events

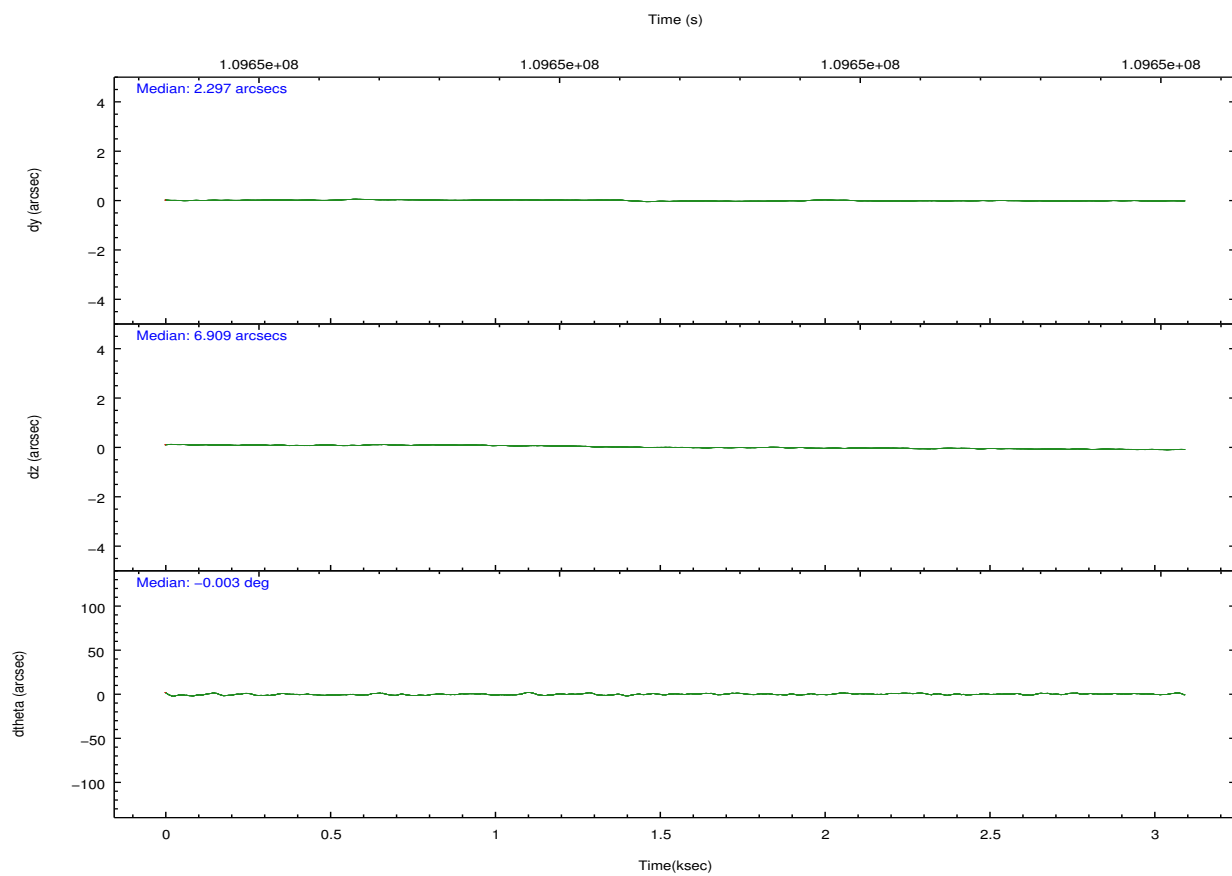
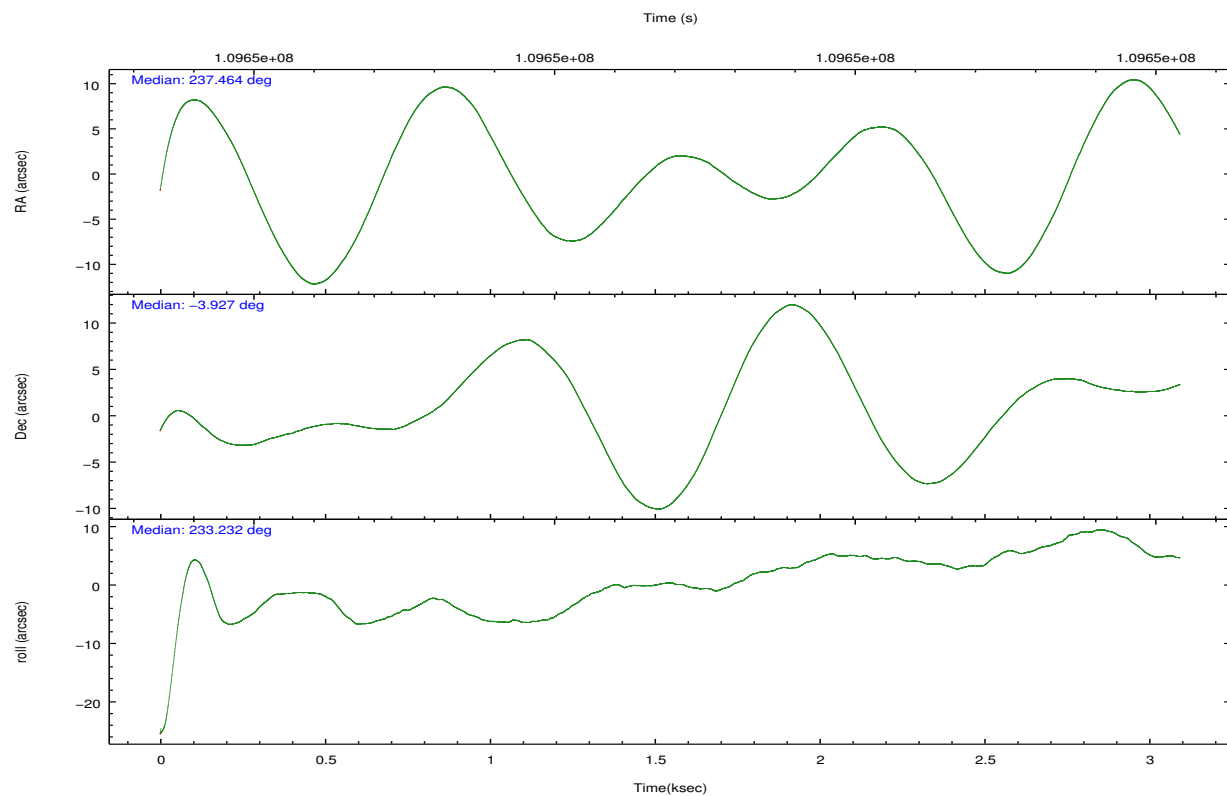
	ccd 0	ccd 1	ccd 2	ccd 3	ccd 6	ccd 7		ccd 0	ccd 1	ccd 2	ccd 3	ccd 6	ccd 7
level 1 events	18251	17730	19194	20023	19997	24543	grade 0 events	990	917	915	1159	851	983
rejected events	15963	15395	17061	17650	17886	14236		5%	5%	4%	5%	4%	4%
rejected %	87%	86%	88%	88%	89%	58%	grade 1 events	8	8	9	12	7	28
								0%	0%	0%	0%	0%	0%
							grade 2 events	490	477	431	403	446	2111
								2%	2%	2%	2%	2%	8%
							grade 3 events	218	233	208	221	190	916
								1%	1%	1%	1%	0%	3%
							grade 4 events	204	273	185	216	191	969
								1%	1%	0%	1%	0%	3%
							grade 5 events	713	715	695	783	875	2403
								3%	4%	3%	3%	4%	9%
							grade 6 events	393	439	399	378	438	5344
								2%	2%	2%	1%	2%	21%
							grade 7 events	15235	14668	16352	16851	16999	11789
								83%	82%	85%	84%	85%	48%

2.2 Compared Parameters

Parameter	Planned	Actual	Parameter	Planned	Actual
Instrument	ACIS	ACIS	Obspar format version number	7	7
Detector	ACIS-012367	ACIS-012367	Obspar file type	PREDICTED	ACTUAL
Grating	NONE	NONE	Obspar update status	NONE	UPDATED
Data mode	FAINT	FAINT	Number of optional ACIS chips dropped	0	0
Observation mode	POINTING	POINTING	On-chip summing requested	N	N
[deg] Pointing RA	237.466548	237.4634917506791	Subarray requested	NONE	NONE
[deg] Pointing Dec	-3.899537	-3.926885934899359	Alternating exposures requested	N	N
[deg] Pointing Roll	233.032223	233.2405921604745	[s] Primary exposure time	0.000000	3.2
[mm] SIM focus pos	-0.782348	-0.7809083437167272			
[mm] SIM defocus	0	0.001439871863259334			
[mm] SIM translation stage pos	-233.592463	-233.5874344608287			
[mm] SIM translation stage offset	0	-0.005018542100998502			
[s] Observation start time (MET)	109645991.184000	109645000.05483			
Observation start date	2001-06-23T01:12:07	2001-06-23T00:56:40			
[s] Observation end time (MET)	109648931.184000	109649245.60499			
Observation end date	2001-06-23T02:01:07	2001-06-23T02:07:25			
Read mode	TIMED	TIMED			

2.3 Aspect



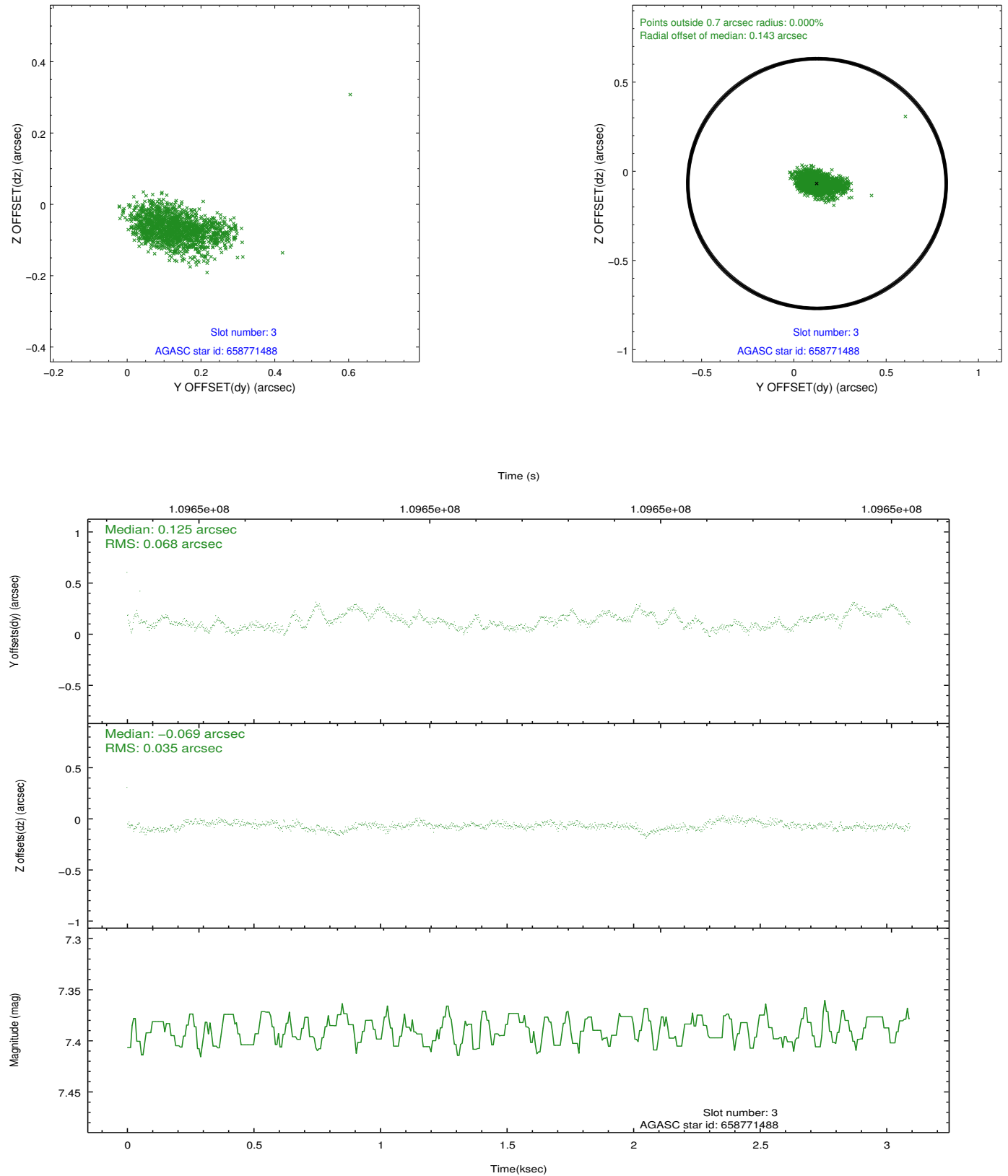


Slot Statistics

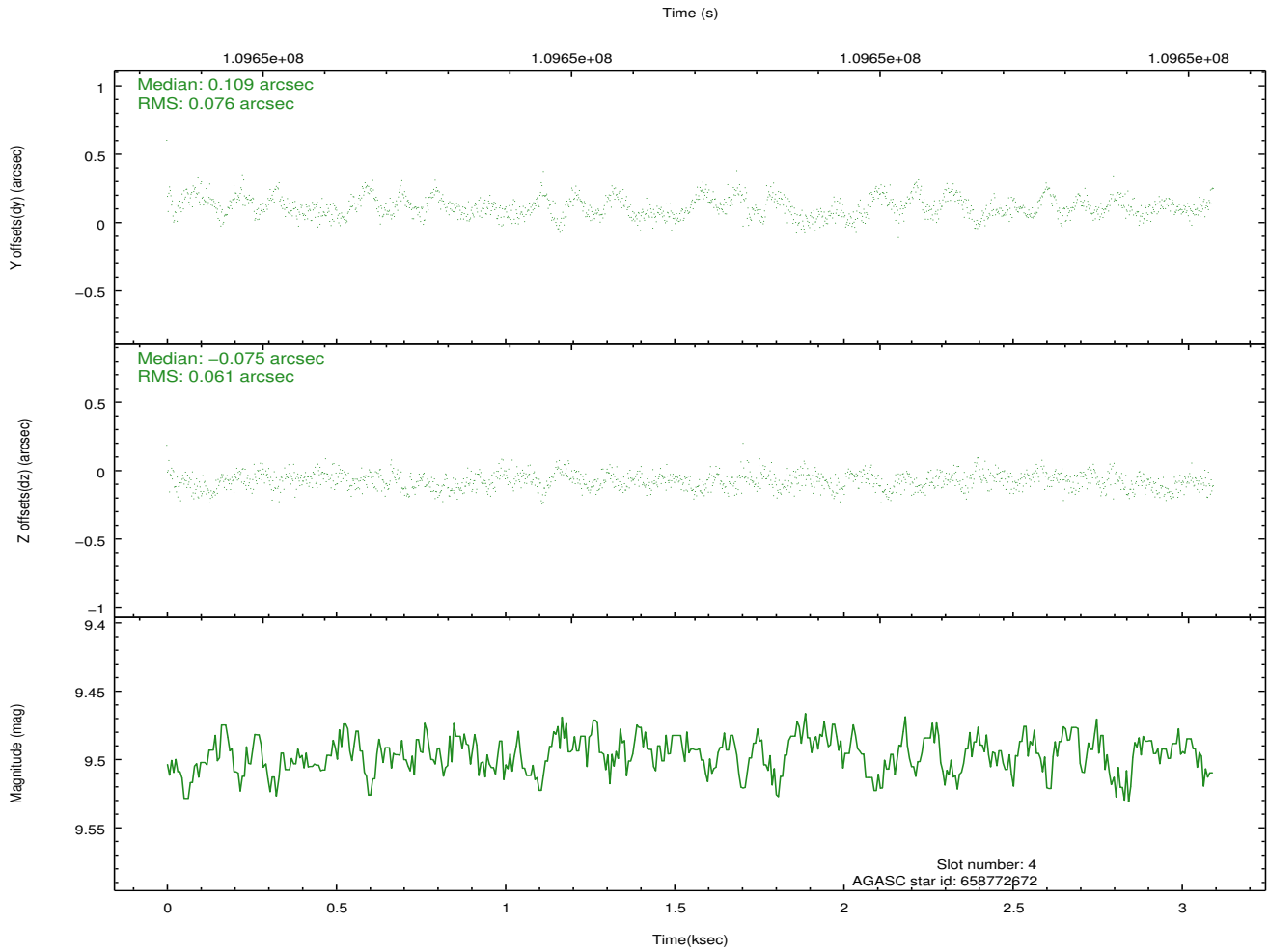
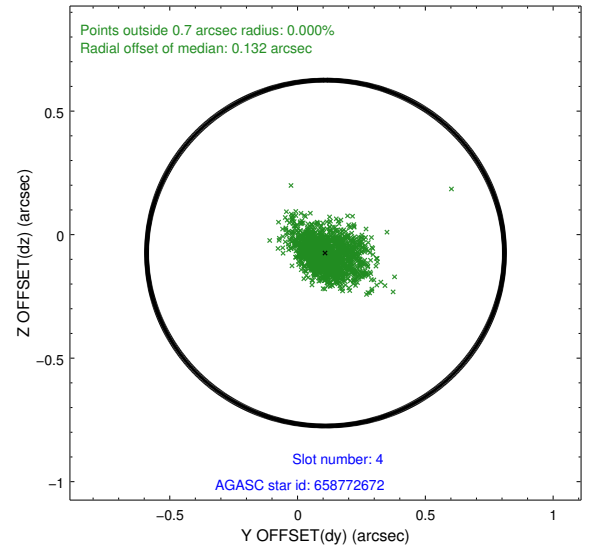
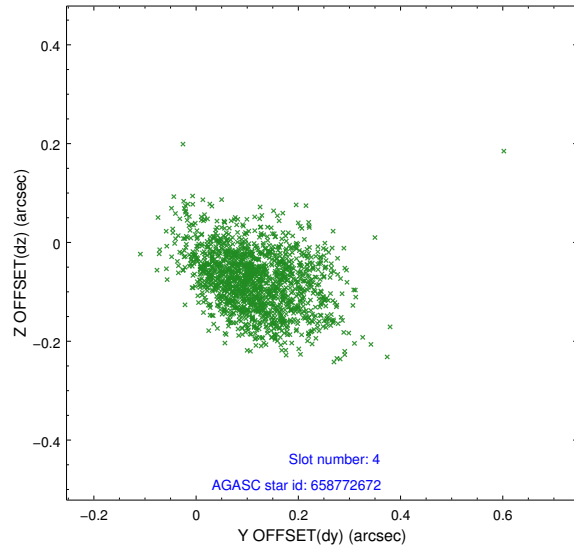
slot	status	id	mag	n_pts	med_dy	med_dz	dr1	dr2	ra	dec	mean_y	mean_z
0	FID	ACIS-I-2	7.16	755	-0.050	-0.069	0.009	0.016	0.000000	0.000000	-756.70	-836.75
1	FID	ACIS-I-4	7.18	755	0.001	0.054	0.006	0.012	0.000000	0.000000	2156.46	1068.53
2	FID	ACIS-I-5	7.23	755	-0.052	0.084	0.009	0.015	0.000000	0.000000	-1807.89	1068.73
3	GUIDE	658771488	7.39	1510	0.125	-0.069	0.078	0.134	236.628478	-4.059984	2274.70	-2056.77
4	GUIDE	658772672	9.50	1507	0.109	-0.075	0.101	0.169	236.669407	-3.822099	1503.99	-2456.58
5	GUIDE	658245688	10.57	1509	-0.151	0.018	0.174	0.296	237.170592	-3.178964	-1429.87	-2412.47
6	GUIDE	658767904	9.50	1509	-0.070	0.048	0.077	0.128	237.638455	-4.051308	65.90	819.53
7	GUIDE	658768944	10.70	1503	-0.025	0.082	0.162	0.267	237.789208	-4.175277	98.12	1522.59

2.4 Star Slots

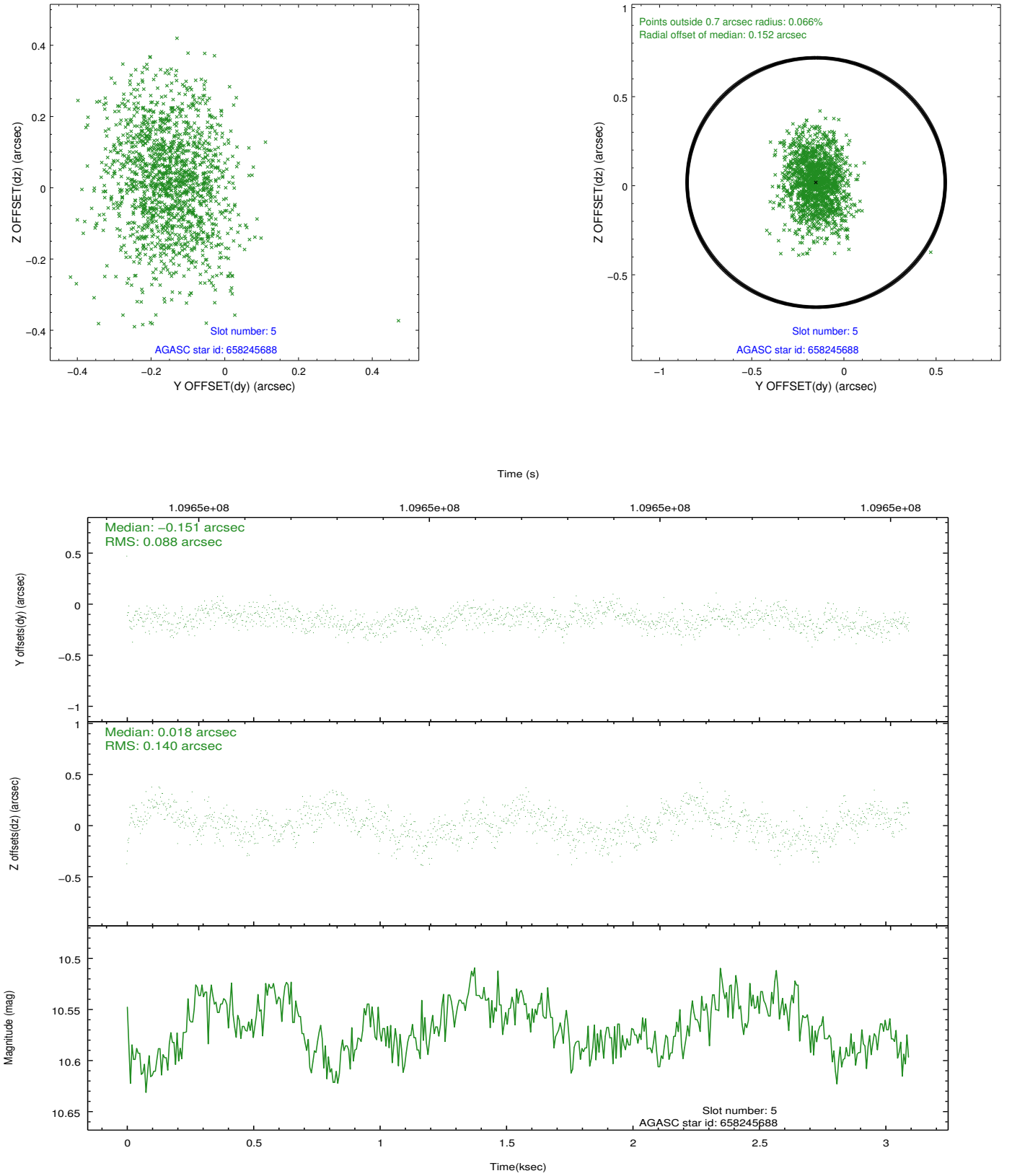
2.4.1 Slot 3



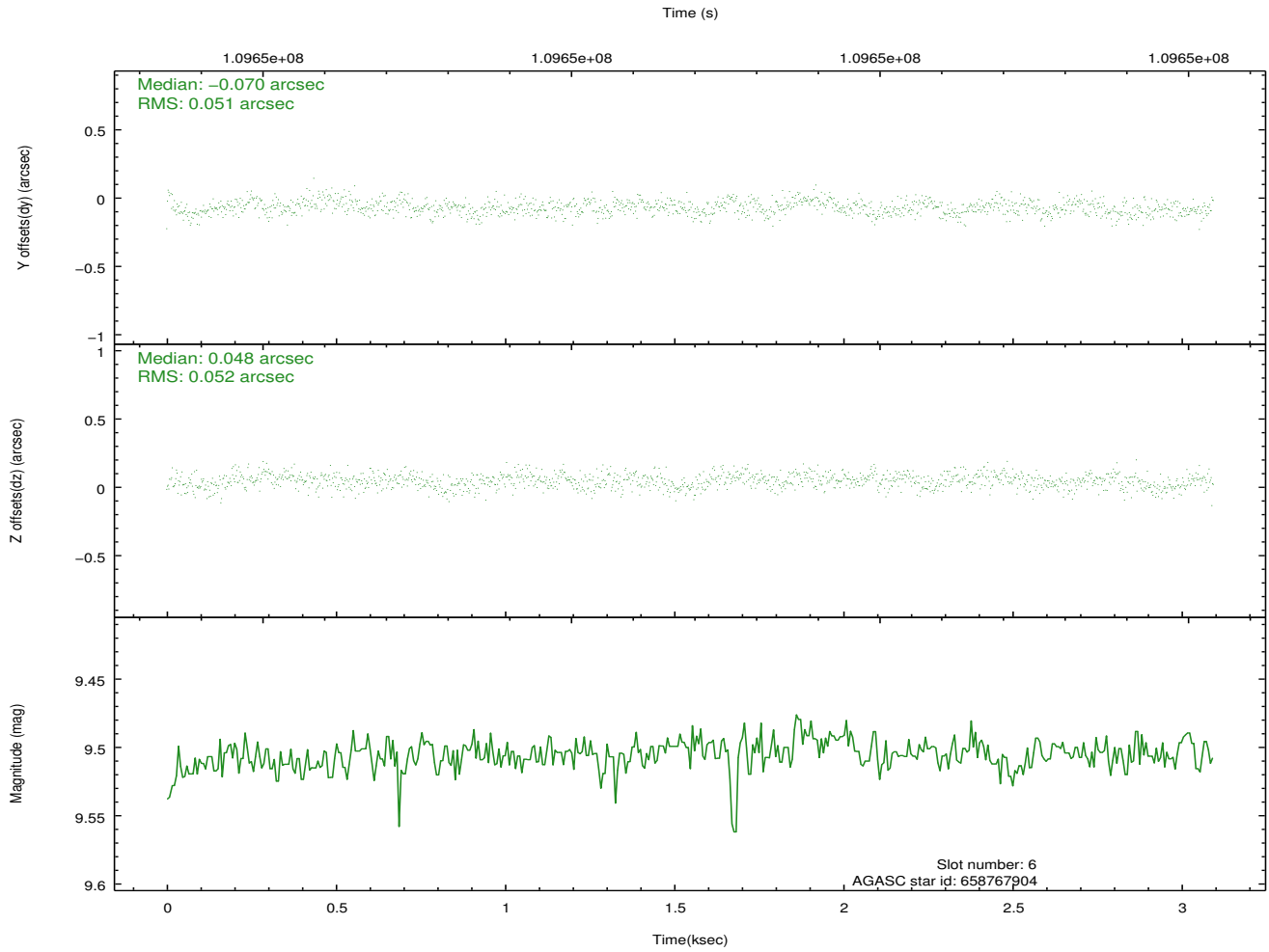
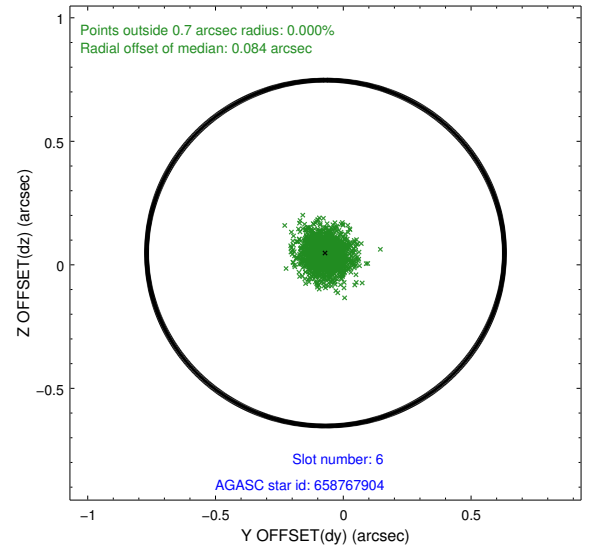
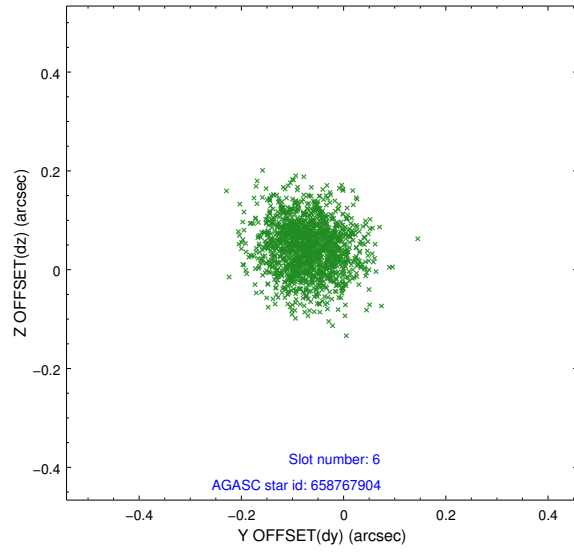
2.4.2 Slot 4



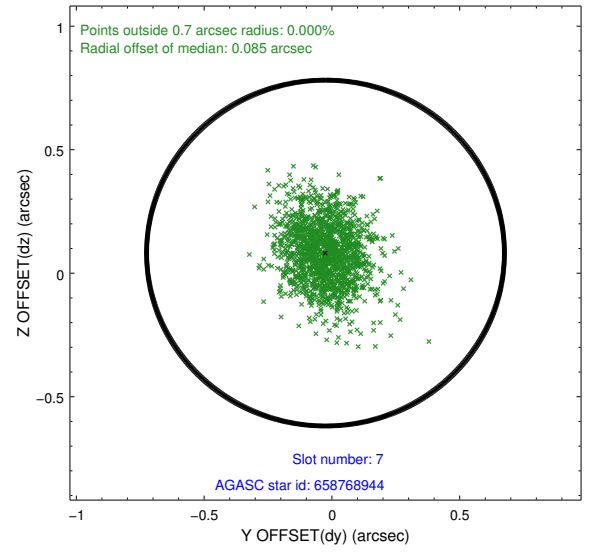
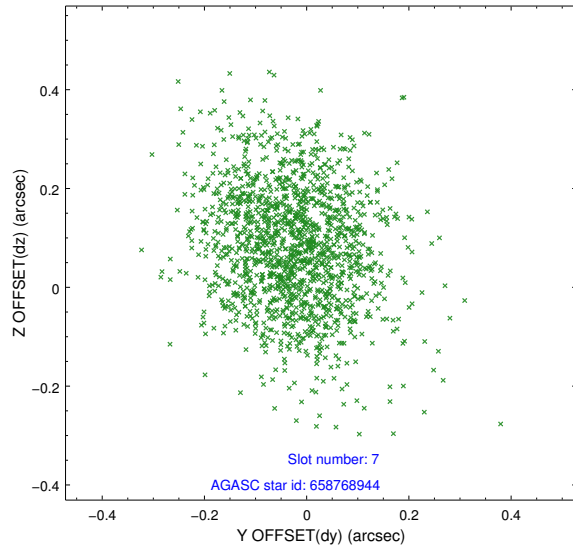
2.4.3 Slot 5



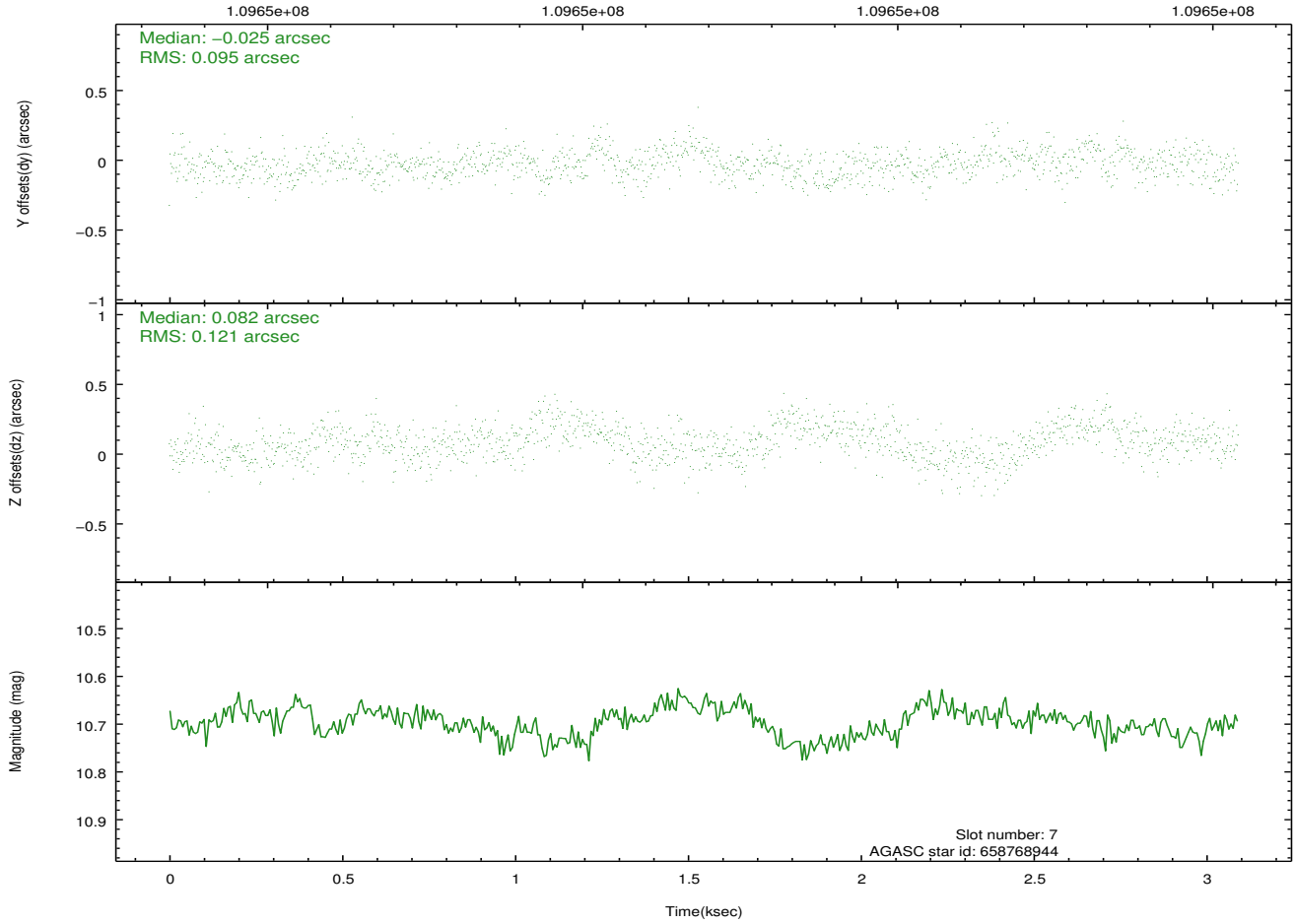
2.4.4 Slot 6



2.4.5 Slot 7

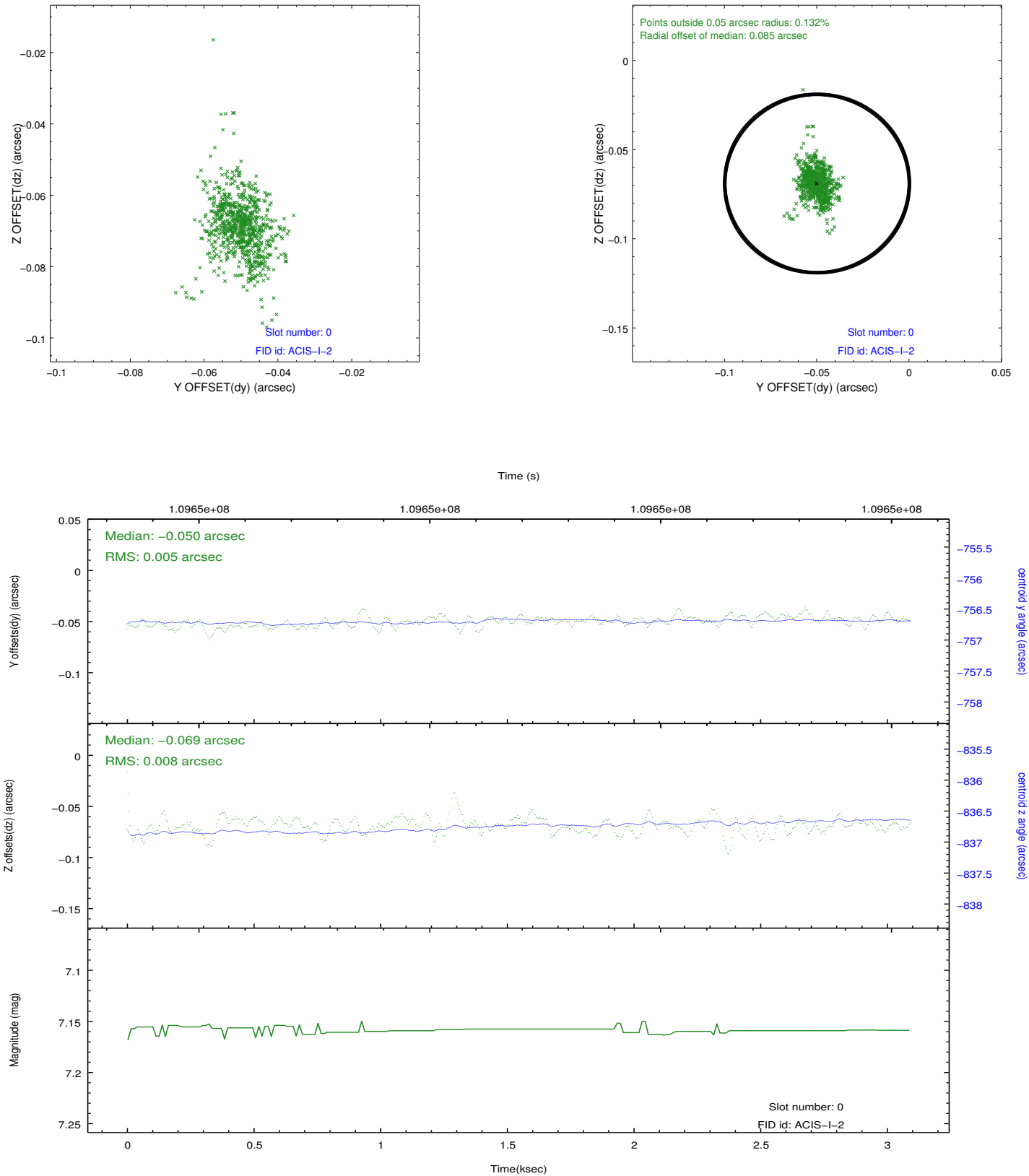


Time (s)

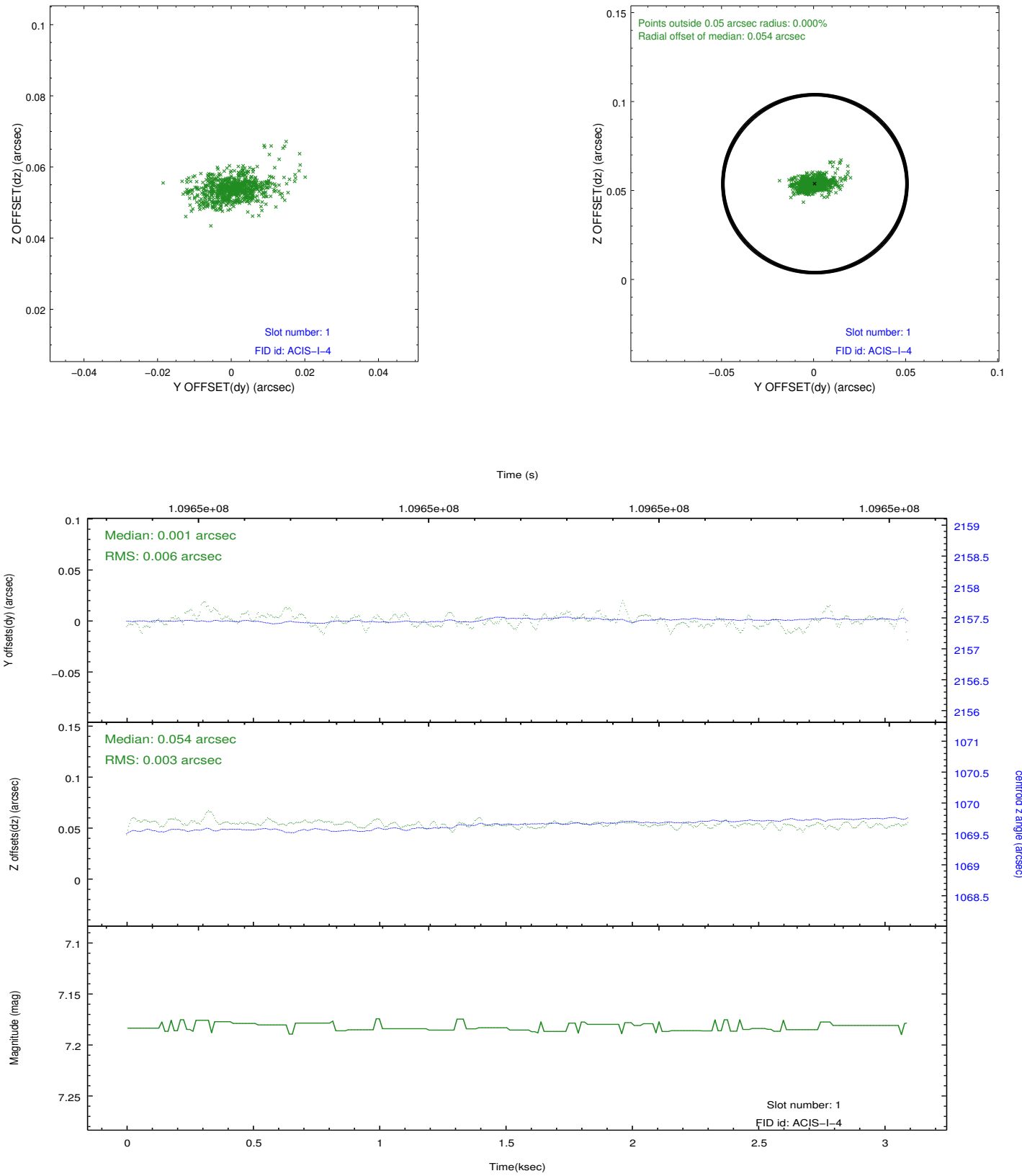


2.5 FID Slots

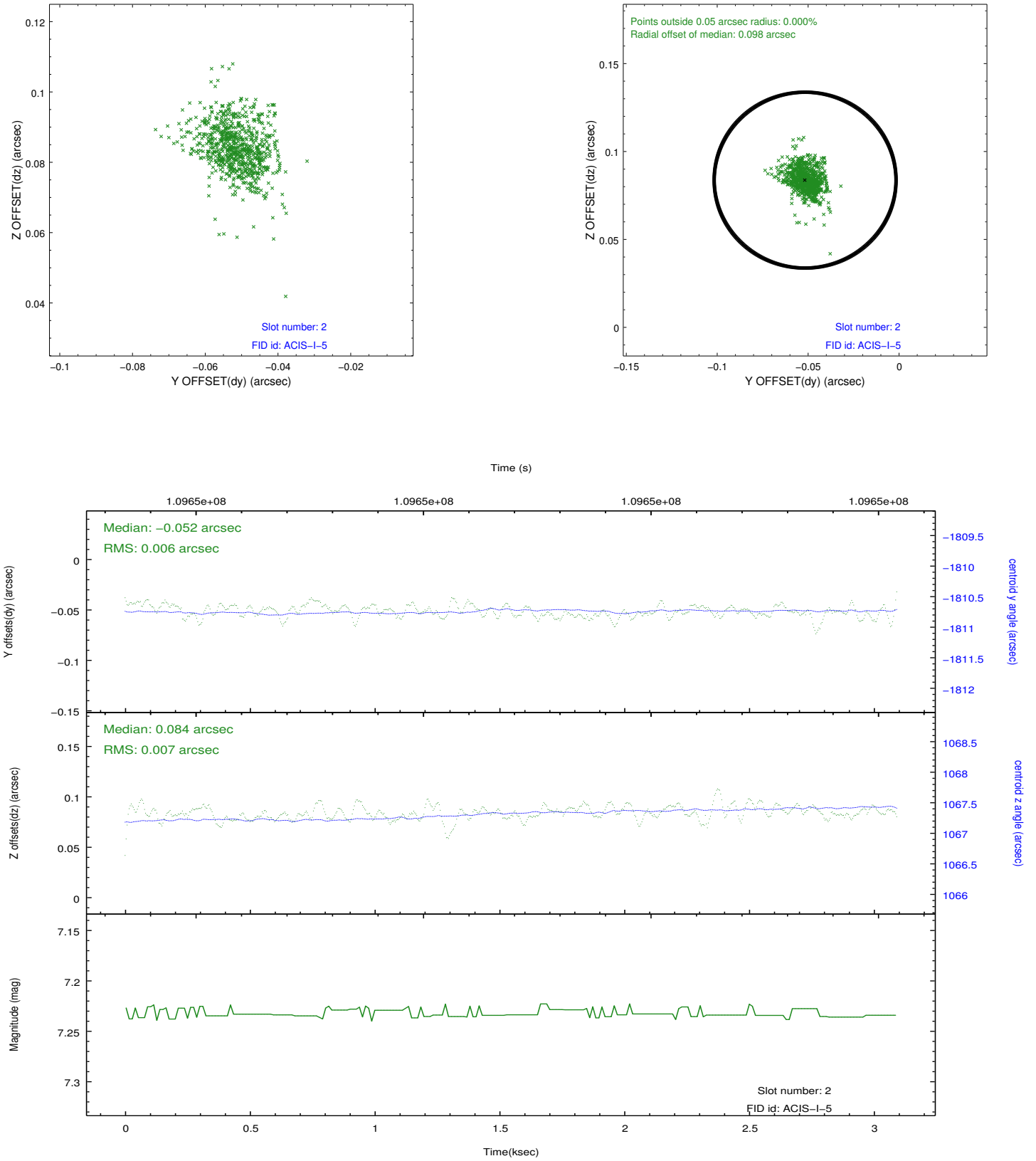
2.5.1 Slot 0



2.5.2 Slot 1



2.5.3 Slot 2



A Summary

A.1 Status

V&V Scientist	Jen Lauer
V&V Date (YYYY-MM-DD)	2012.09.21
V&V Edition	1
V&V Disposition and Status	OK
V&V Charge Time	2.953

A.2 Comments