

V&V Reference Report

L2 ASCDS Version : 7.6.9

Observation 981 - L2 Version 001
Chandra X-Ray Center

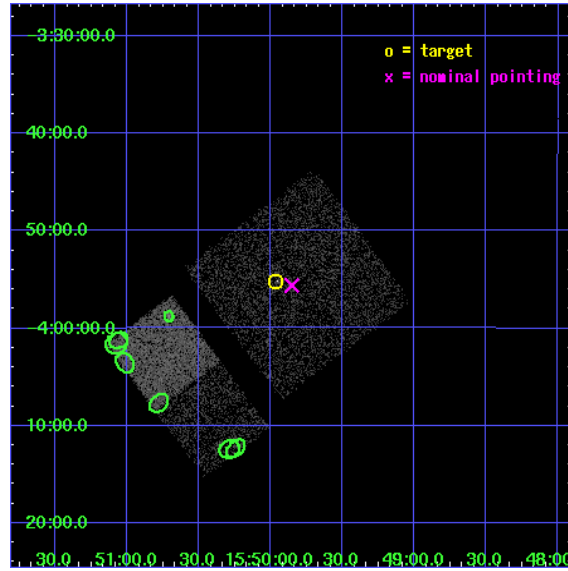
L2 Processing Date : Dec 8 2006

Contents

| | | |
|----------|-------------------------------|-----------|
| 1 | Front | 2 |
| 2 | OBI | 3 |
| 2.1 | OBI | 3 |
| 2.1.1 | Images | 3 |
| 2.1.2 | Bias | 3 |
| 2.1.3 | Parameters | 4 |
| 2.1.4 | Events | 4 |
| 2.2 | Compared Parameters | 5 |
| 2.3 | Aspect | 6 |
| 2.4 | Star Slots | 9 |
| 2.4.1 | Slot 3 | 9 |
| 2.4.2 | Slot 4 | 10 |
| 2.4.3 | Slot 5 | 11 |
| 2.4.4 | Slot 6 | 12 |
| 2.4.5 | Slot 7 | 13 |
| 2.5 | FID Slots | 14 |
| 2.5.1 | Slot 0 | 14 |
| 2.5.2 | Slot 1 | 15 |
| 2.5.3 | Slot 2 | 16 |
| 3 | Point Sources | 17 |
| A | Summary | 18 |
| A.1 | Status | 18 |
| A.2 | Comments | 18 |

1 Front

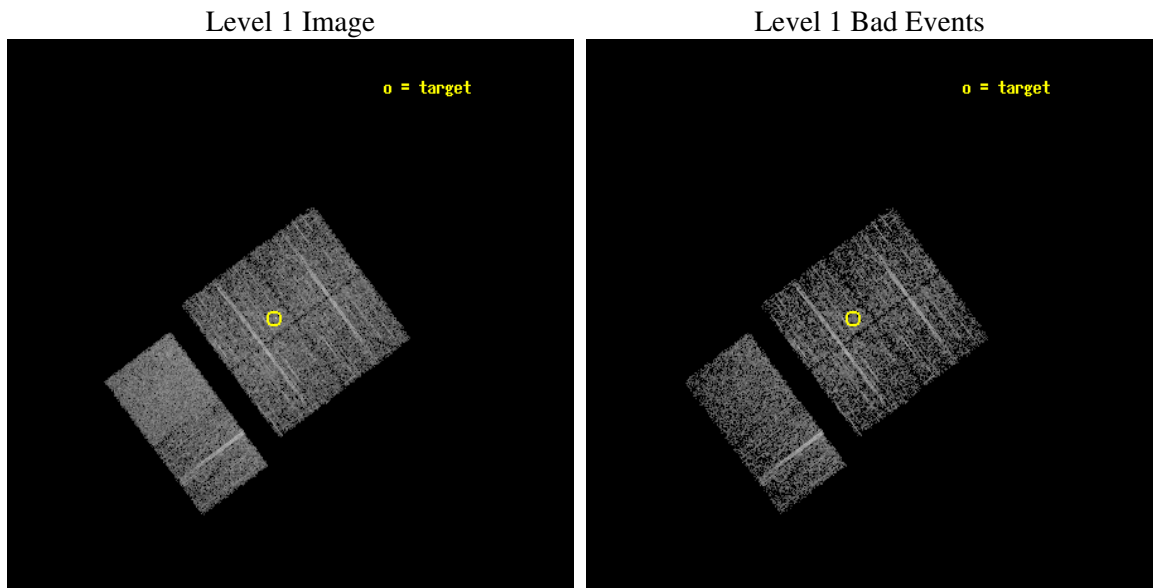
| | |
|----------|---------------------------------|
| seq_num | 200088 |
| obs_id | 981 |
| title | OBSERVATION OF SCO-CEN OUTLYERS |
| observer | Professor Gordon Garmire |
| object | HD141569 |
| dtcycle | 0 |
| cycle | P |
| ra_targ | 237.490833 |
| dec_targ | -3.921111 |
| ra_nom | 237.46349175068 |
| dec_nom | -3.9268859348994 |
| roll_nom | 233.24059216047 |
| revision | 2 |
| ontime | 2953.6000027508 |
| livetime | 2916.1997410715 |
| ontime0 | 2953.6000027508 |
| ontime1 | 2953.6000027508 |
| ontime2 | 2953.6000027508 |
| ontime3 | 2953.6000027508 |
| ontime6 | 2953.6000027508 |
| ontime7 | 2953.6000027508 |
| l2events | 18999 |



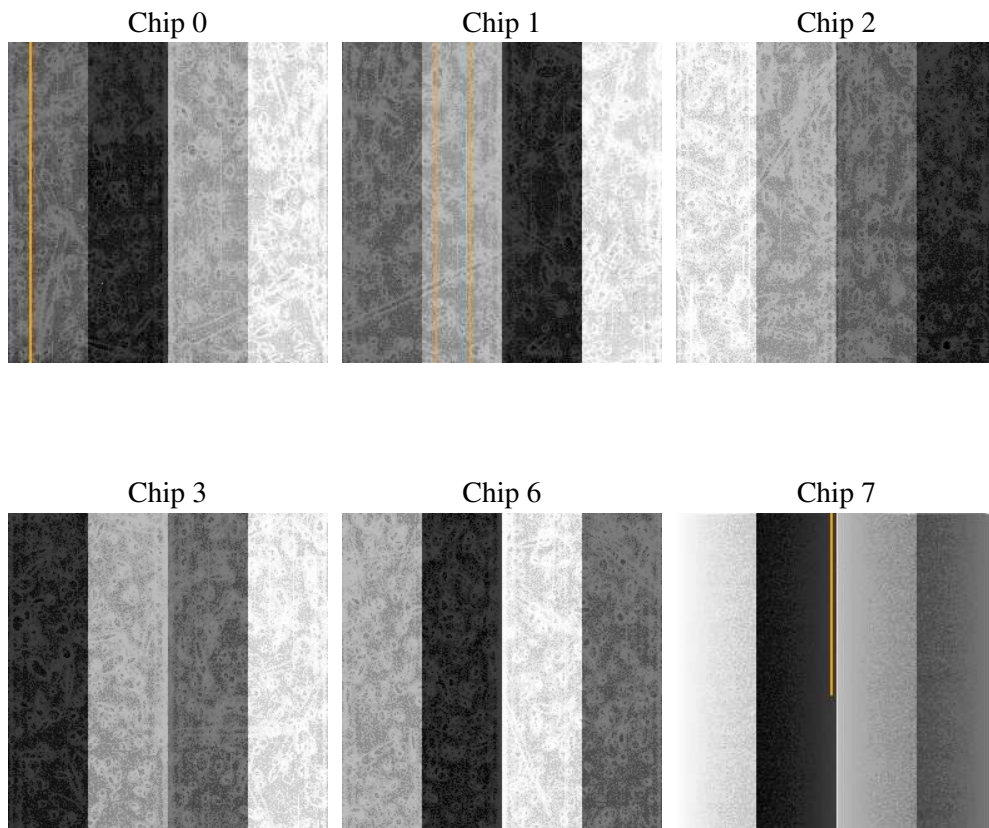
2 OBI

2.1 OBI

2.1.1 Images



2.1.2 Bias



2.1.3 Parameters

| | |
|----------|---------------------|
| obi_num | 0 |
| ascdsver | 7.6.9 |
| caldsver | 3.2.4 |
| date | 2006-12-08T11:38:30 |
| revision | 2 |

| | |
|----------------|-----------------|
| sched_exp_time | 2939.601000 |
| ontime | 2959.0320856273 |
| ontime0 | 2959.0320856273 |
| ontime1 | 2959.0320856273 |
| ontime2 | 2959.0320856273 |
| ontime3 | 2959.0320856273 |
| ontime6 | 2959.0320856273 |
| ontime7 | 2959.0320856273 |
| l1events | 119738 |

2.1.4 Events

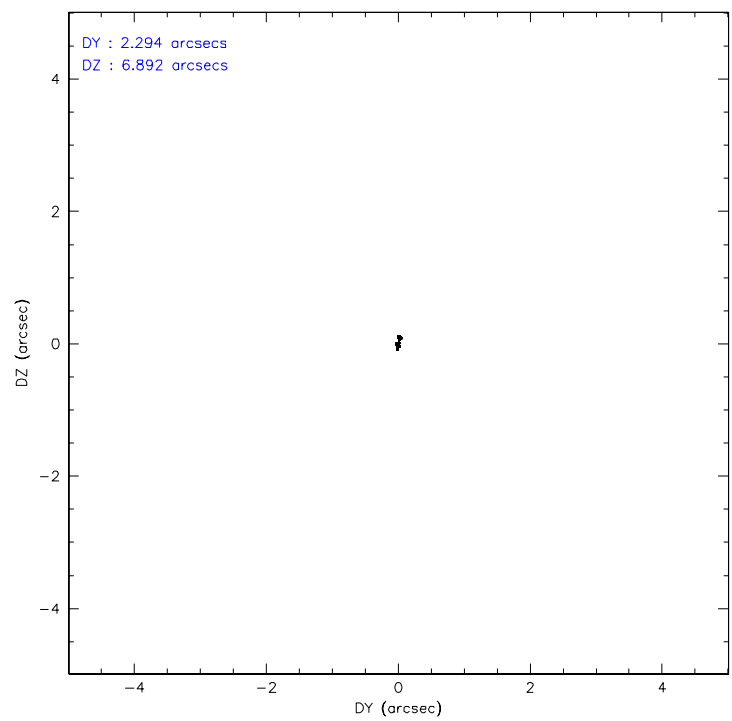
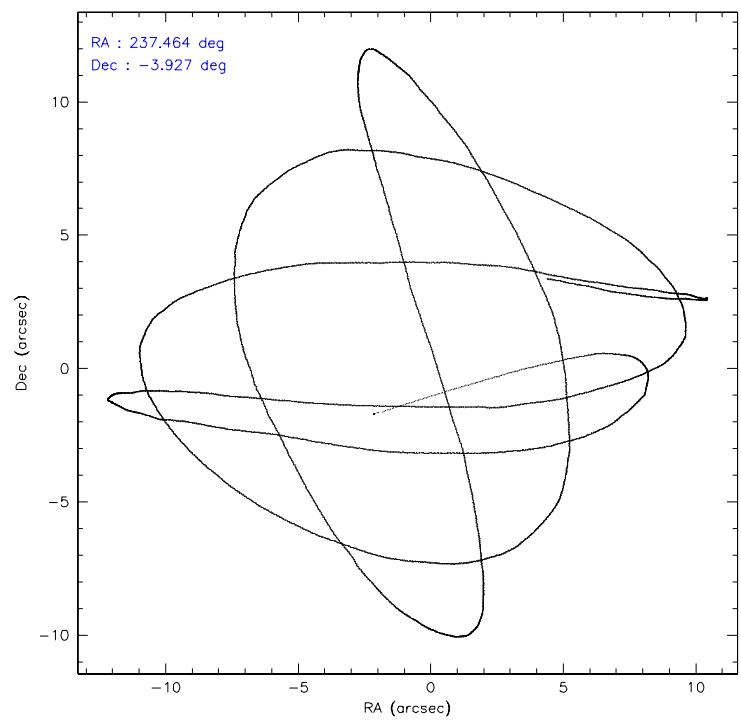
| | ccd 0 | ccd 1 | ccd 2 | ccd 3 | ccd 6 | ccd 7 |
|-----------------|-------|-------|-------|-------|-------|-------|
| level 1 events | 18251 | 17730 | 19194 | 20023 | 19997 | 24543 |
| rejected events | 15962 | 15392 | 17060 | 17649 | 17883 | 14950 |
| rejected % | 87% | 86% | 88% | 88% | 89% | 60% |

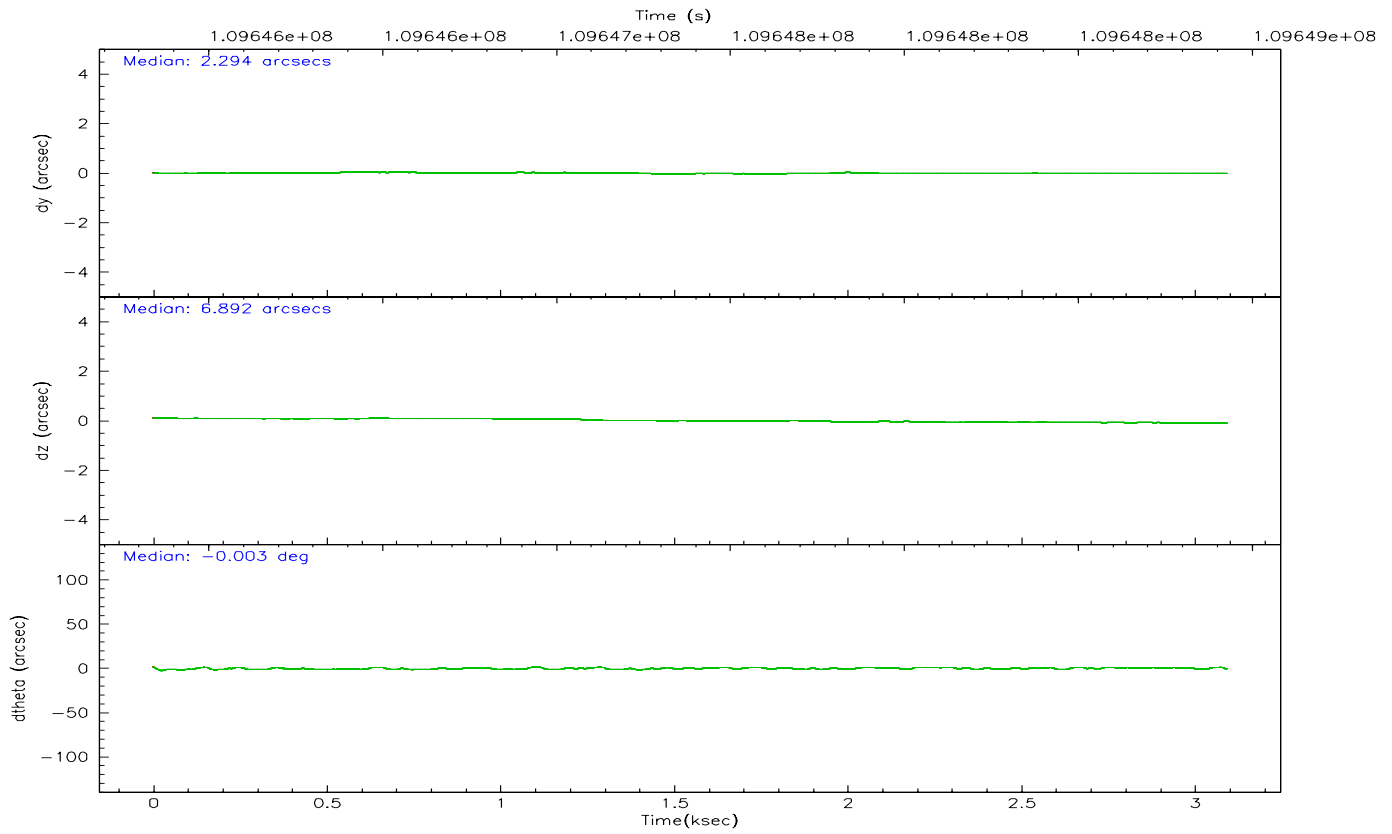
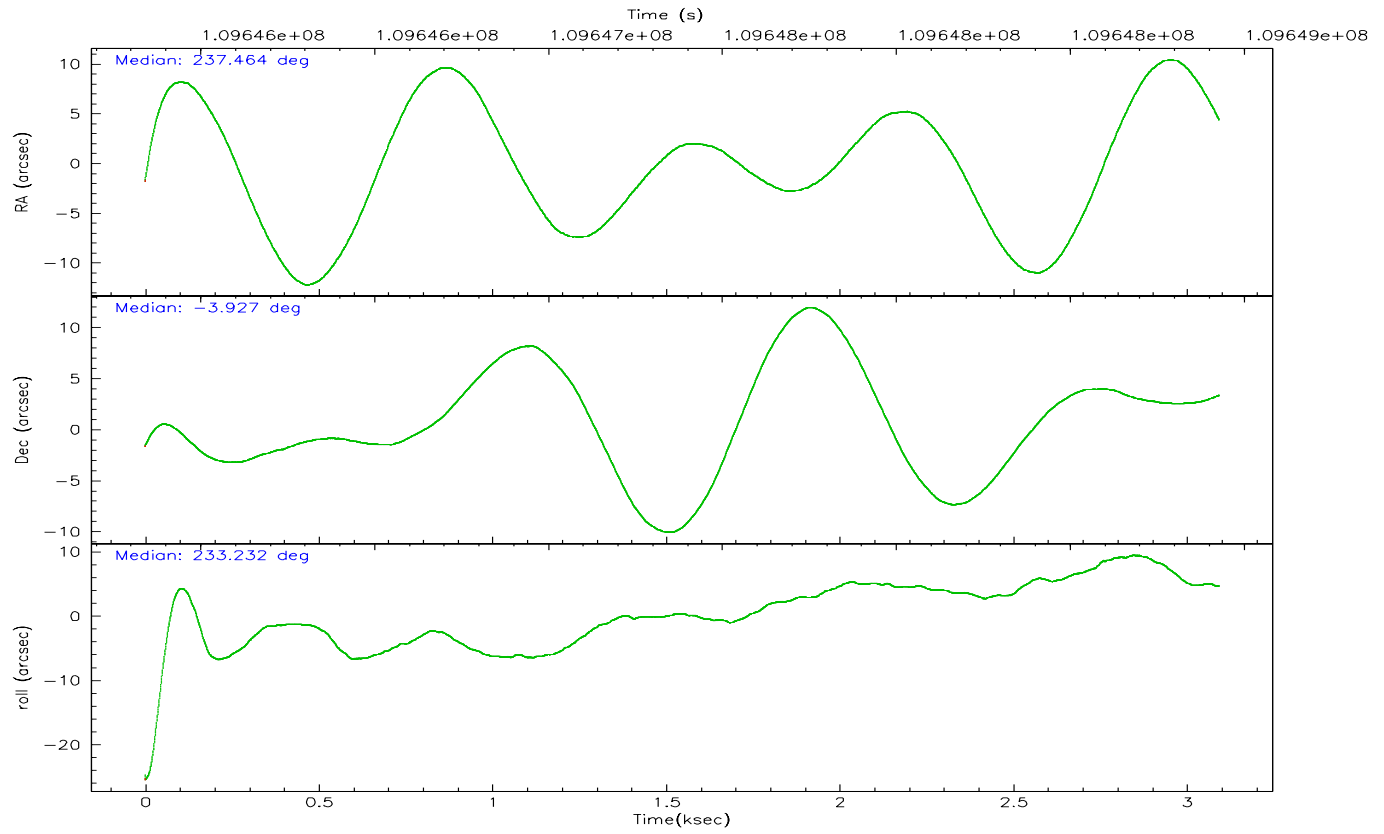
| | ccd 0 | ccd 1 | ccd 2 | ccd 3 | ccd 6 | ccd 7 |
|----------------|-------|-------|-------|-------|-------|-------|
| grade 0 events | 991 | 917 | 916 | 1159 | 851 | 589 |
| | 5% | 5% | 4% | 5% | 4% | 2% |
| grade 1 events | 8 | 8 | 9 | 12 | 7 | 21 |
| | 0% | 0% | 0% | 0% | 0% | 0% |
| grade 2 events | 489 | 477 | 430 | 403 | 446 | 2434 |
| | 2% | 2% | 2% | 2% | 2% | 9% |
| grade 3 events | 218 | 233 | 208 | 221 | 190 | 532 |
| | 1% | 1% | 1% | 1% | 0% | 2% |
| grade 4 events | 204 | 273 | 185 | 216 | 191 | 488 |
| | 1% | 1% | 0% | 1% | 0% | 1% |
| grade 5 events | 713 | 715 | 695 | 783 | 876 | 1675 |
| | 3% | 4% | 3% | 3% | 4% | 6% |
| grade 6 events | 393 | 439 | 399 | 378 | 438 | 5559 |
| | 2% | 2% | 2% | 1% | 2% | 22% |
| grade 7 events | 15235 | 14668 | 16352 | 16851 | 16998 | 13245 |
| | 83% | 82% | 85% | 84% | 85% | 53% |

2.2 Compared Parameters

| Parameter | Planned | Actual | Parameter | Planned | Actual |
|-----------------------------------|---------------------|-----------------------|---------------------------------------|-----------|---------|
| Instrument | ACIS | ACIS | Obspar format version number | 6 | 6 |
| Detector | ACIS-012367 | ACIS-012367 | Obspar file type | PREDICTED | ACTUAL |
| Grating | NONE | NONE | Obspar update status | NONE | UPDATED |
| Data mode | FAINT | FAINT | Number of optional ACIS chips dropped | 0 | 0 |
| Observation mode | POINTING | POINTING | On-chip summing requested | N | N |
| Pointing RA | 237.466548 | 237.4634917506791 | Subarray requested | NONE | NONE |
| Pointing Dec | -3.899537 | -3.926885934899359 | Alternating exposures requested | N | N |
| Pointing Roll | 233.032223 | 233.2405921604745 | Primary exposure time | 0.000000 | 3.2 |
| SIM focus pos (mm) | -0.782348 | -0.7809083437167272 | | | |
| SIM defocus (mm) | 0 | 0.001439871863259334 | | | |
| SIM translation stage pos (mm) | -233.592463 | -233.5874344608287 | | | |
| SIM translation stage offset (mm) | 0 | -0.005018542100998502 | | | |
| Observation start time | 109645991.184000 | 109645000.05483 | | | |
| Observation start date | 2001-06-23T01:12:07 | 2001-06-23T00:56:40 | | | |
| Observation end time | 109648931.184000 | 109649245.60499 | | | |
| Observation end date | 2001-06-23T02:01:07 | 2001-06-23T02:07:25 | | | |
| Read mode | TIMED | TIMED | | | |

2.3 Aspect



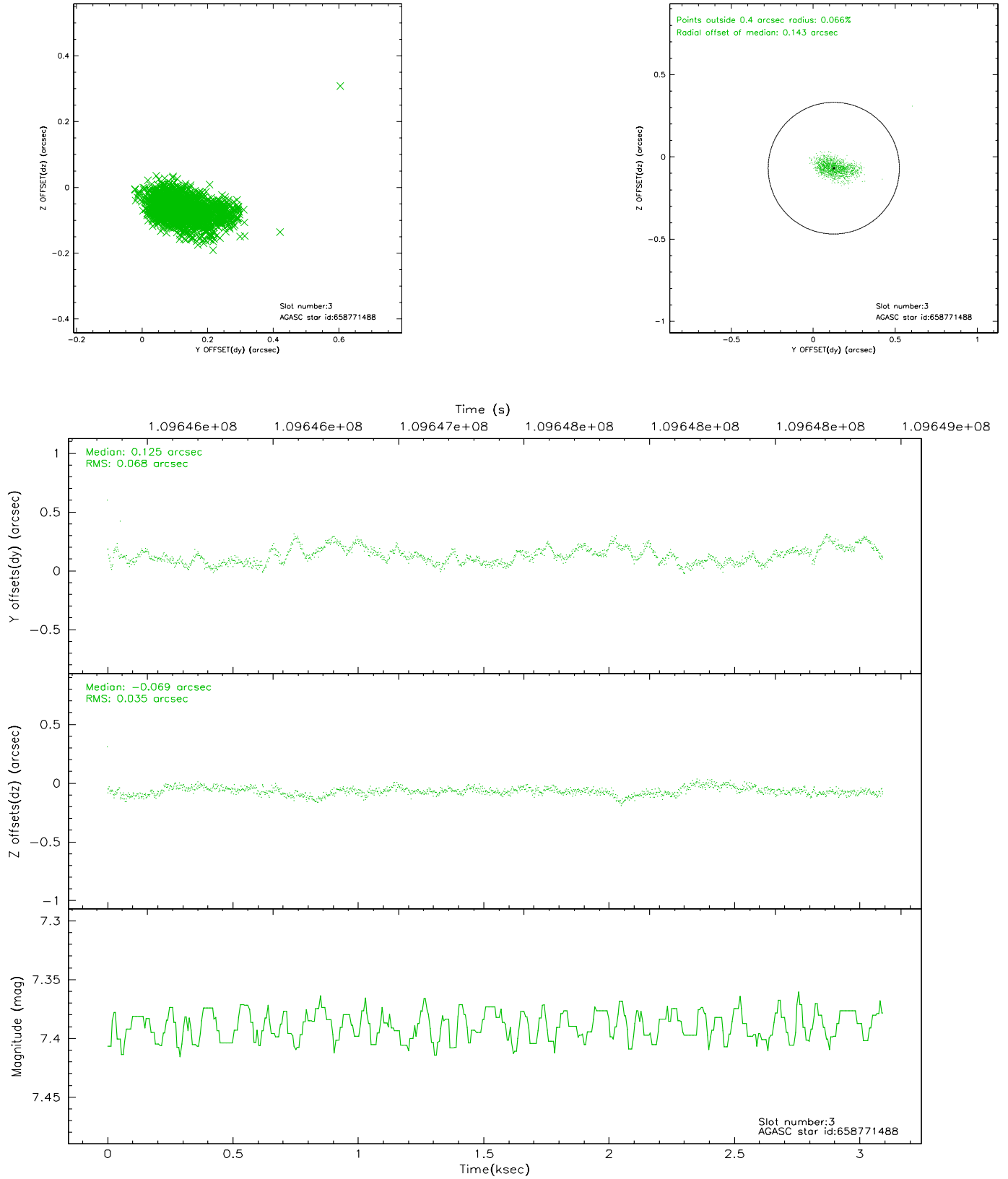


Slot Statistics

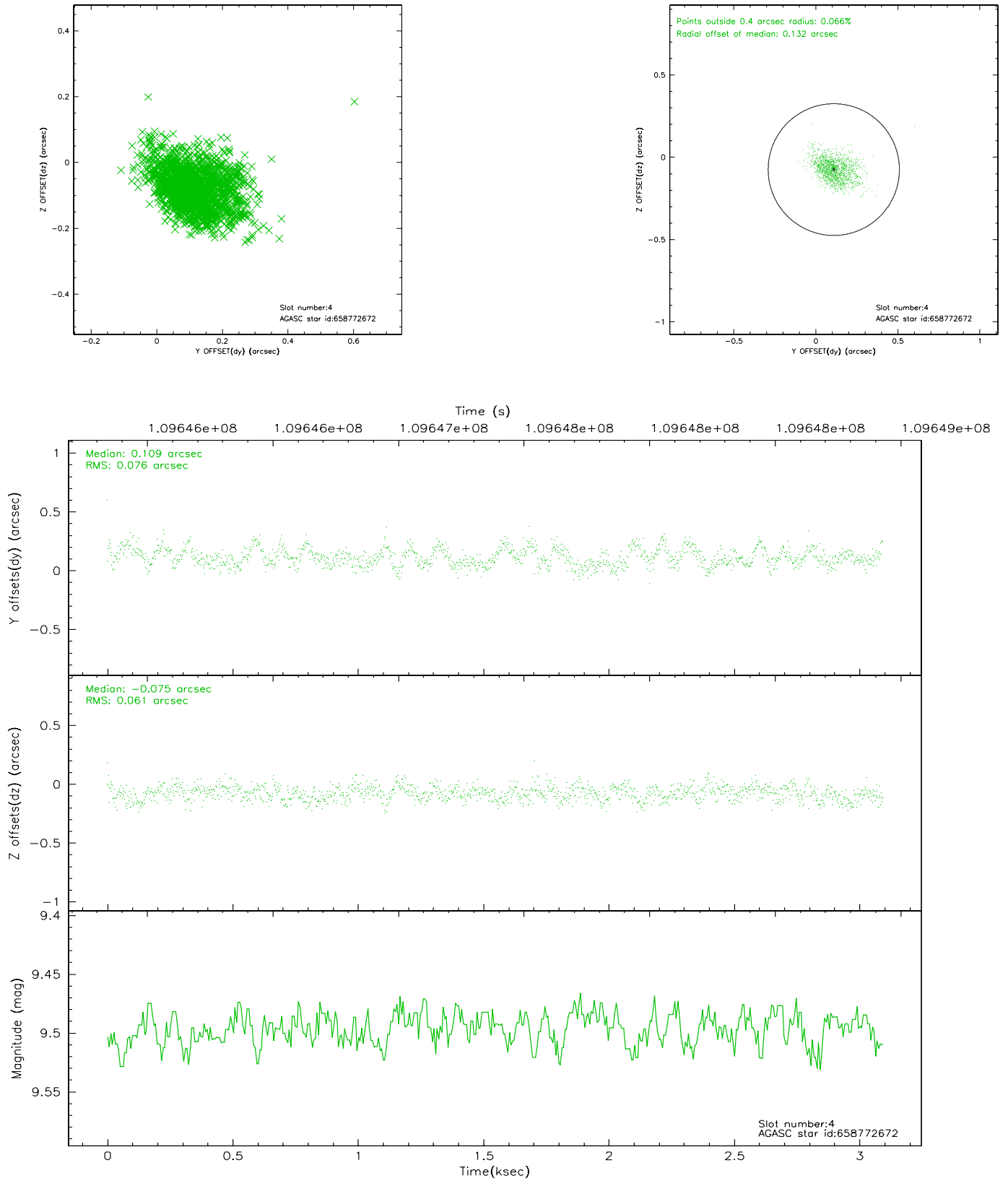
| slot | status | id | mag | n_pts | med_dy | med_dz | dr1 | dr2 | ra | dec | mean_y | mean_z |
|------|--------|-----------|-------|-------|--------|--------|-------|-------|------------|-----------|----------|----------|
| 0 | FID | ACIS-I-2 | 7.16 | 755 | -0.038 | -0.046 | 0.009 | 0.016 | 0.000000 | 0.000000 | -756.69 | -836.71 |
| 1 | FID | ACIS-I-4 | 7.18 | 755 | -0.042 | 0.042 | 0.006 | 0.010 | 0.000000 | 0.000000 | 2156.42 | 1068.54 |
| 2 | FID | ACIS-I-5 | 7.23 | 755 | -0.021 | 0.072 | 0.009 | 0.015 | 0.000000 | 0.000000 | -1807.86 | 1068.73 |
| 3 | GUIDE | 658771488 | 7.39 | 1510 | 0.125 | -0.069 | 0.078 | 0.134 | 236.628478 | -4.059984 | 2274.70 | -2056.77 |
| 4 | GUIDE | 658772672 | 9.50 | 1507 | 0.109 | -0.075 | 0.101 | 0.169 | 236.669407 | -3.822099 | 1503.99 | -2456.58 |
| 5 | GUIDE | 658245688 | 10.57 | 1509 | -0.151 | 0.018 | 0.174 | 0.296 | 237.170592 | -3.178964 | -1429.87 | -2412.47 |
| 6 | GUIDE | 658767904 | 9.50 | 1509 | -0.070 | 0.048 | 0.077 | 0.128 | 237.638455 | -4.051308 | 65.90 | 819.53 |
| 7 | GUIDE | 658768944 | 10.70 | 1503 | -0.025 | 0.082 | 0.162 | 0.267 | 237.789208 | -4.175277 | 98.12 | 1522.59 |

2.4 Star Slots

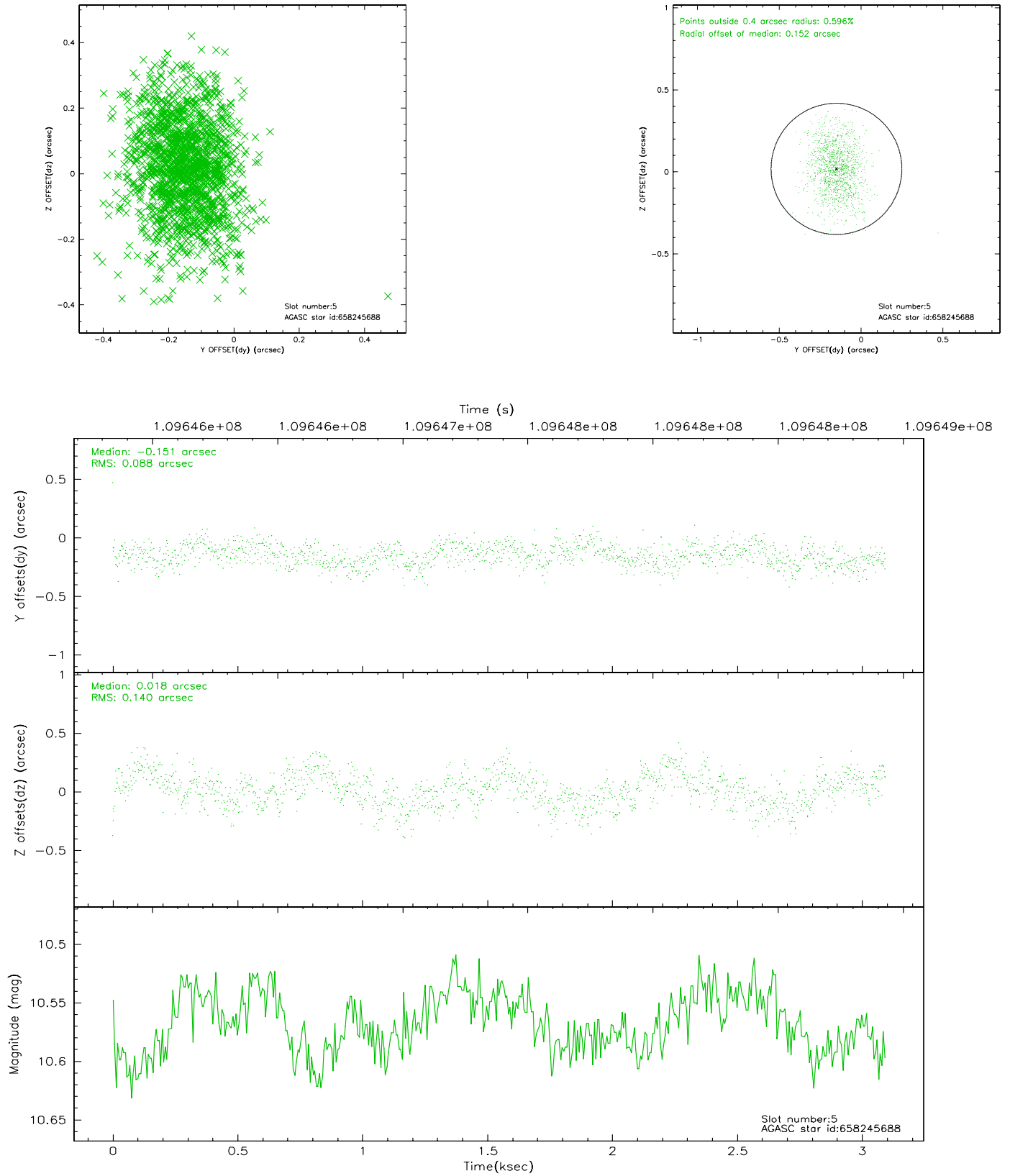
2.4.1 Slot 3



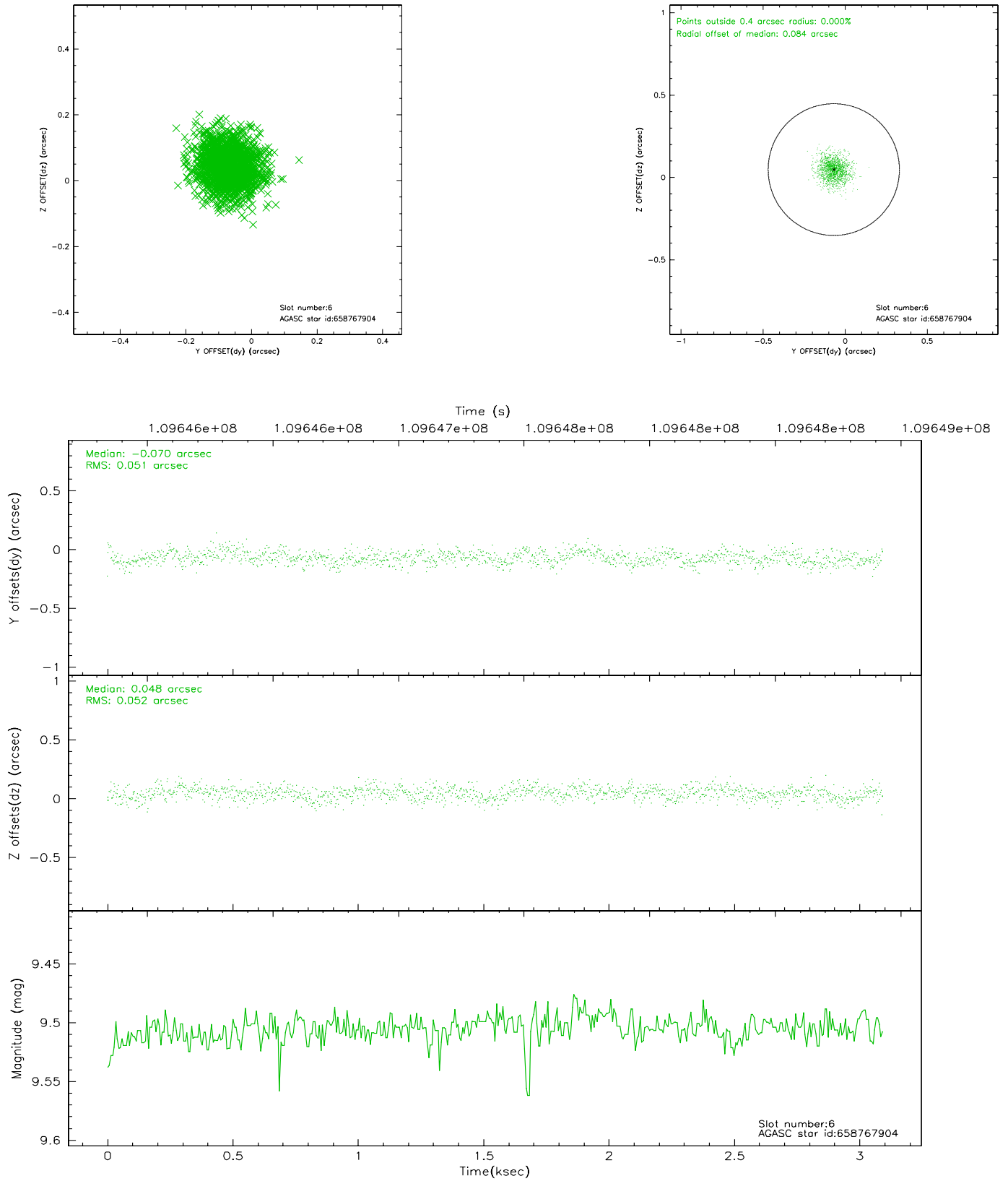
2.4.2 Slot 4



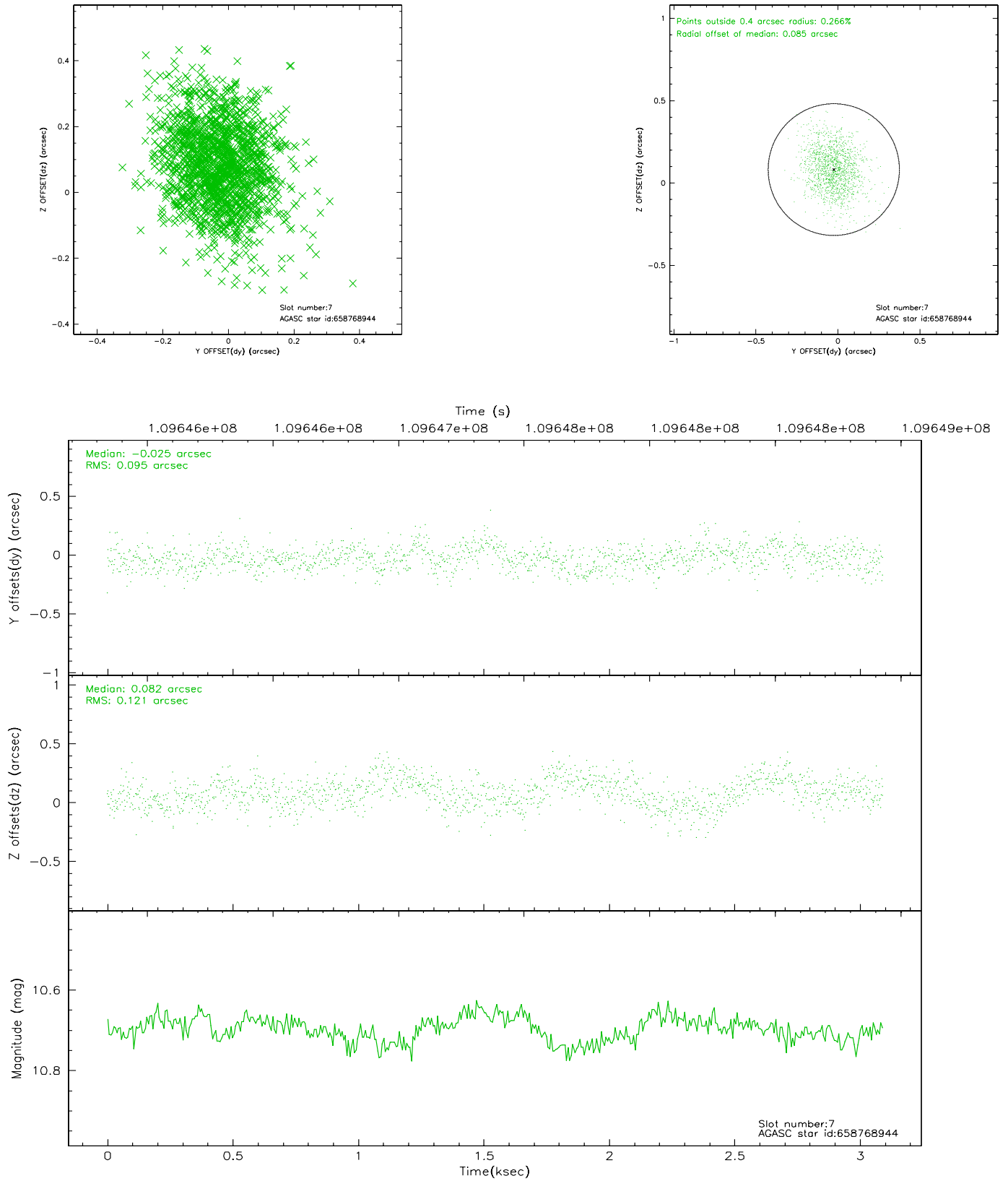
2.4.3 Slot 5



2.4.4 Slot 6

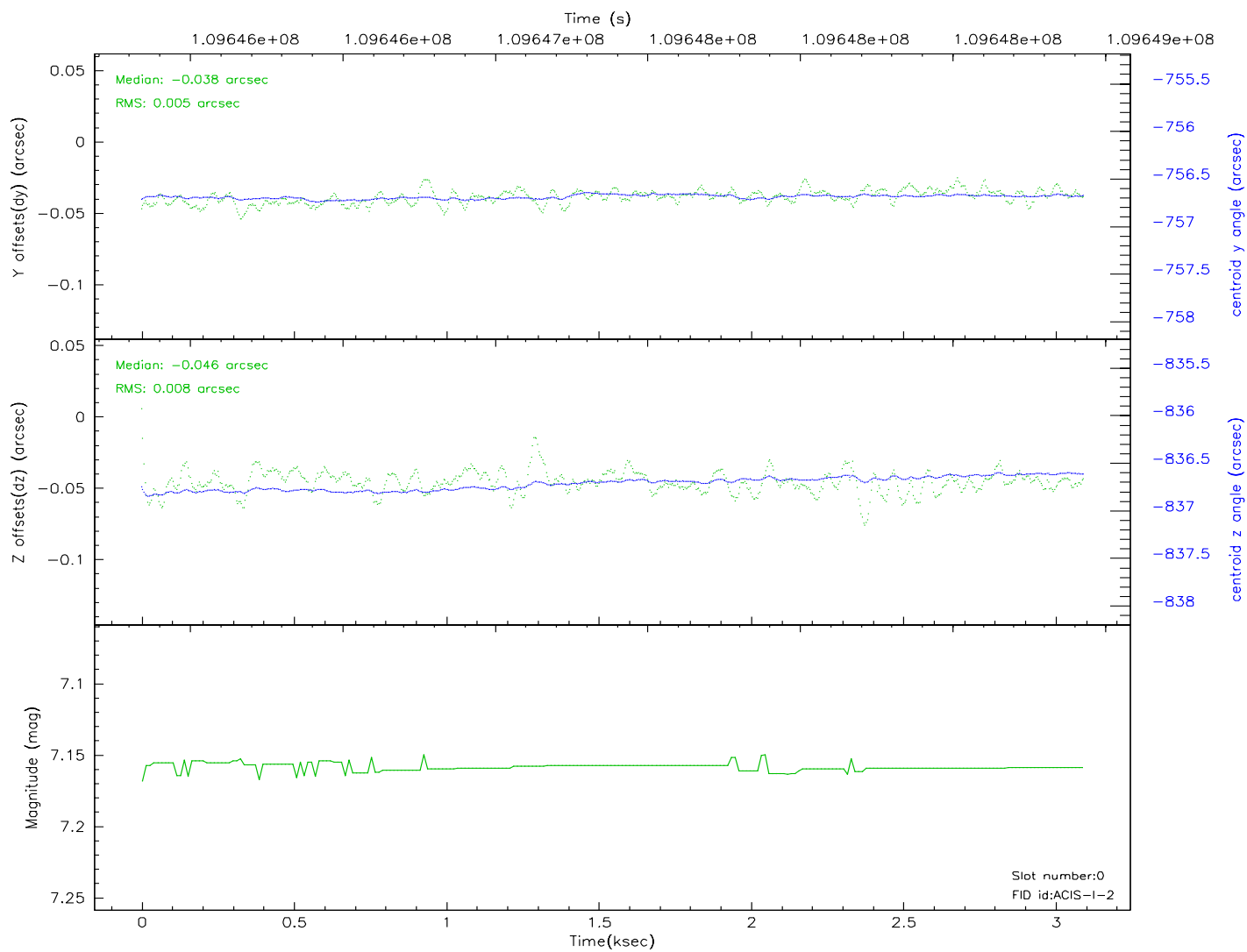
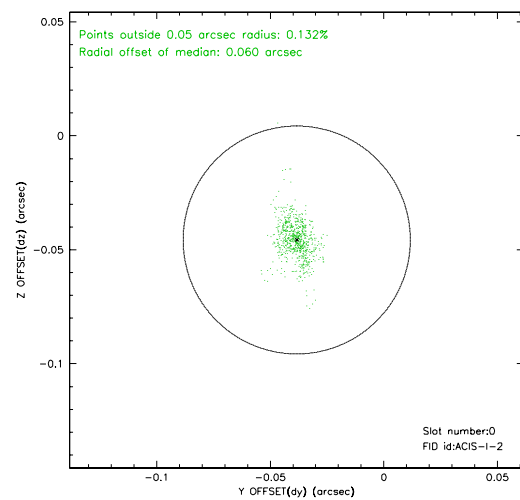
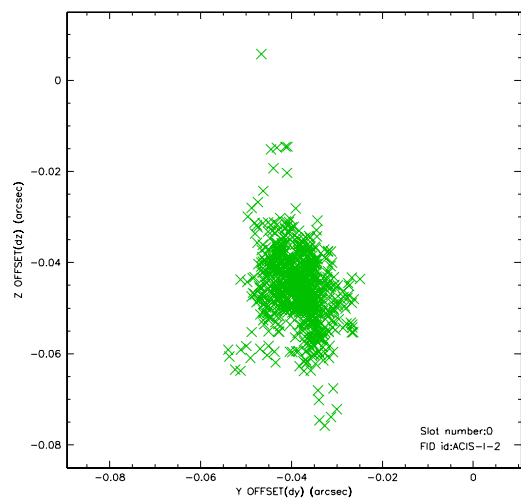


2.4.5 Slot 7

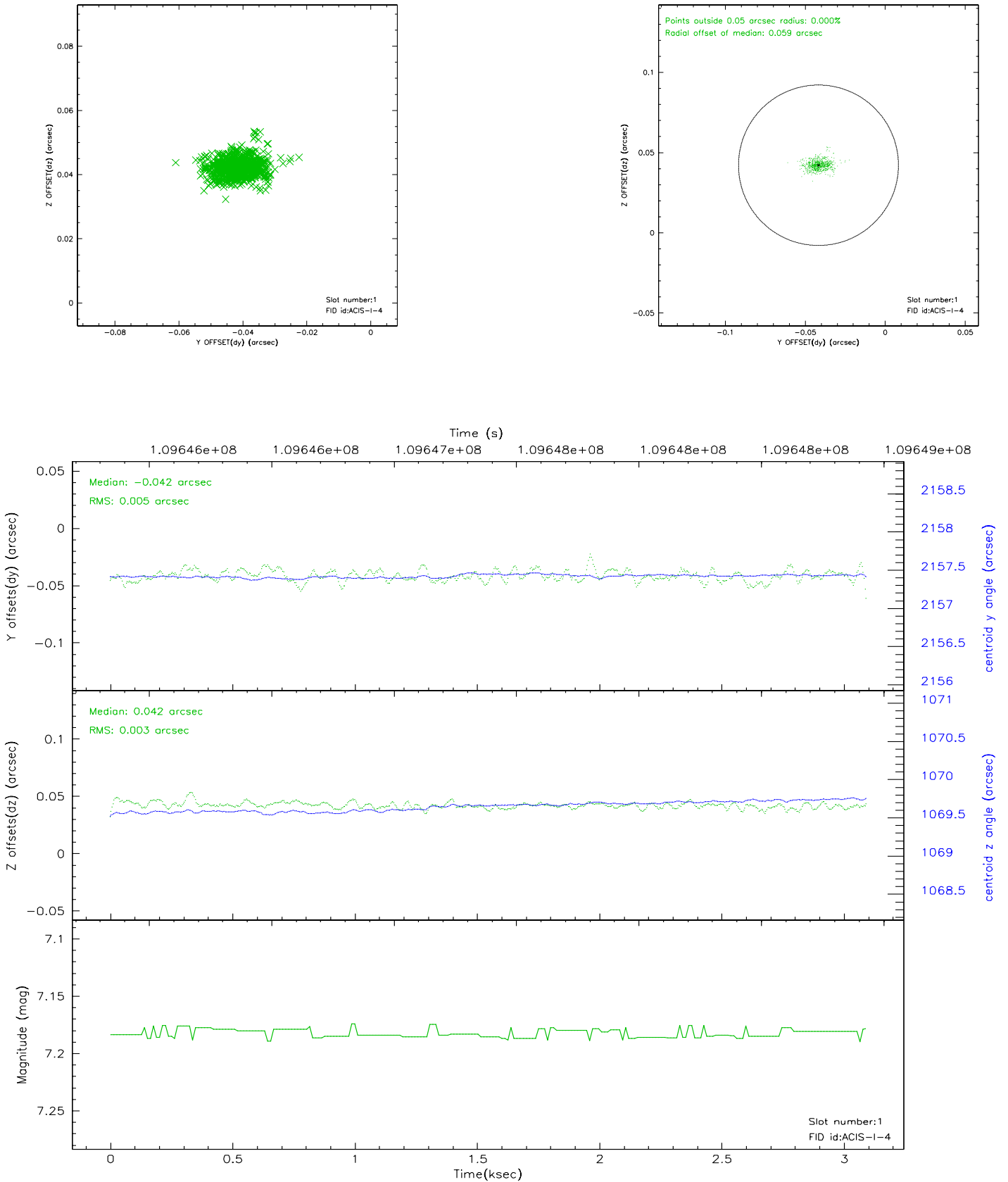


2.5 FID Slots

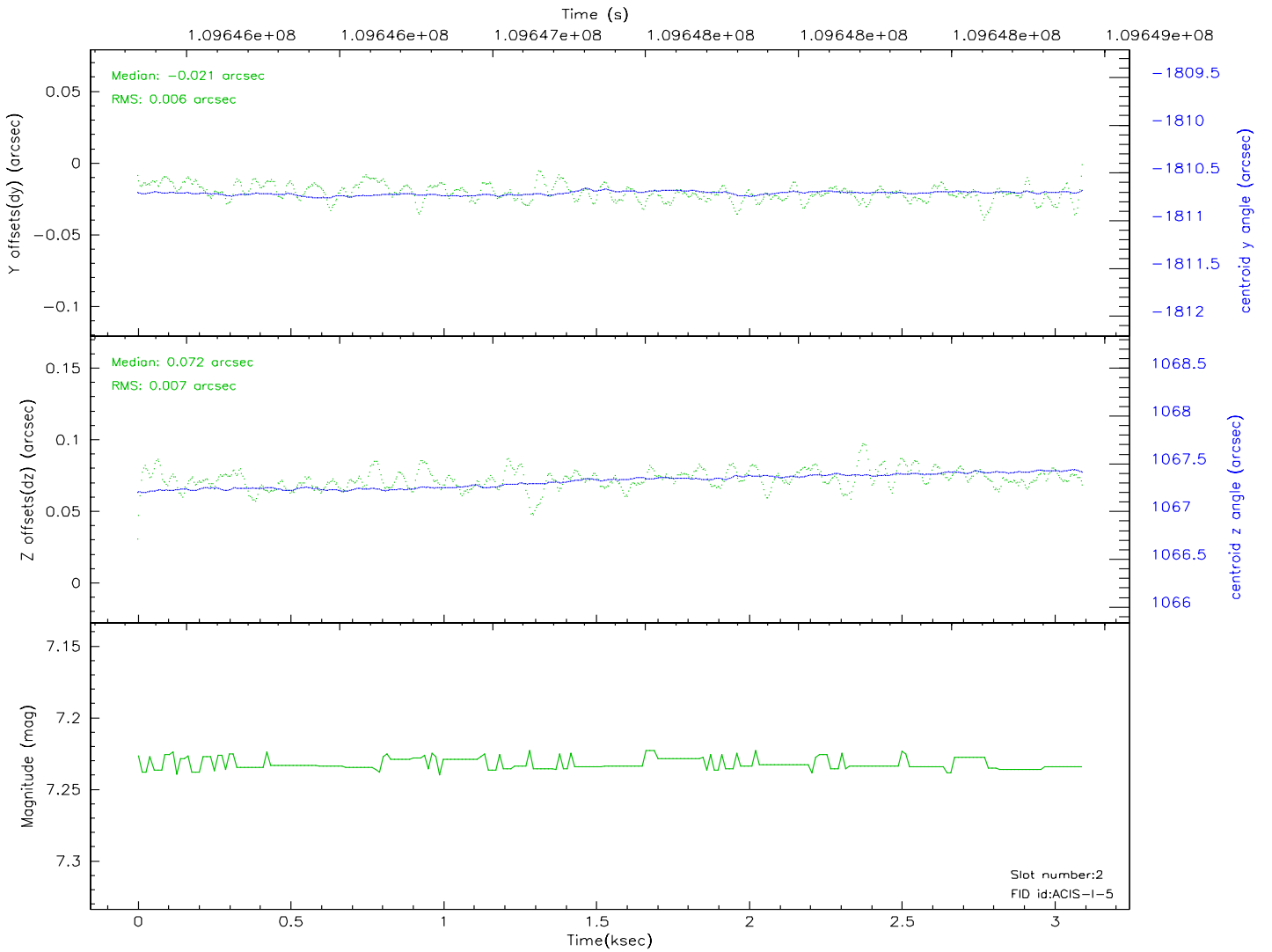
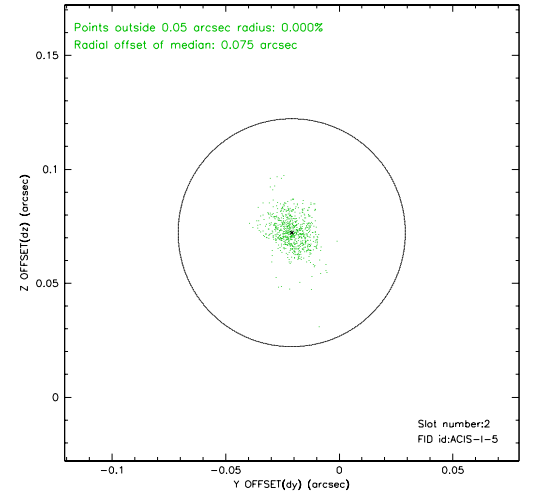
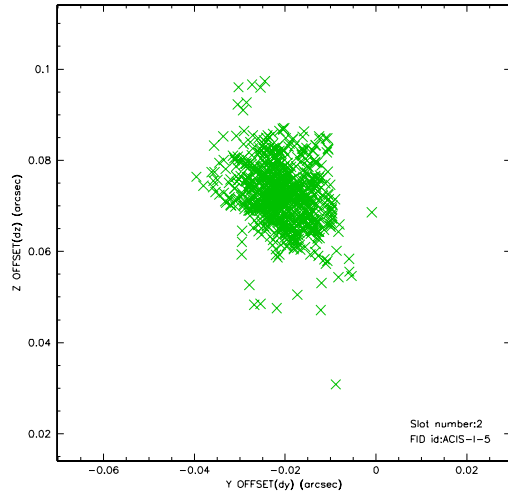
2.5.1 Slot 0



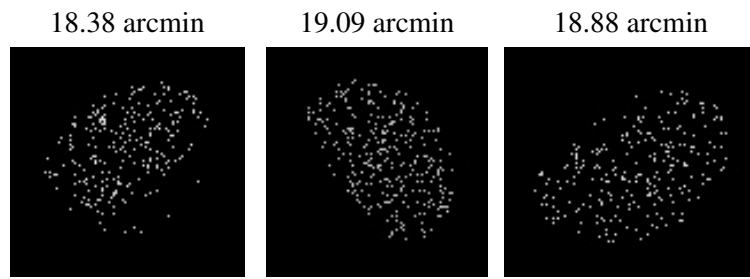
2.5.2 Slot 1



2.5.3 Slot 2



3 Point Sources



A Summary

A.1 Status

| | |
|----------------------------|---------------|
| V&V Scientist | Beth Sundheim |
| V&V Date (YYYY-MM-DD) | 2006.12.08 |
| V&V Edition | 1 |
| V&V Disposition and Status | OK |
| V&V Charge Time | 2.953 |

A.2 Comments