

# V&V Reference Report

## L2 ASCDS Version : 8.4.4

Observation 9721 - L2 Version 2  
Chandra X-Ray Center

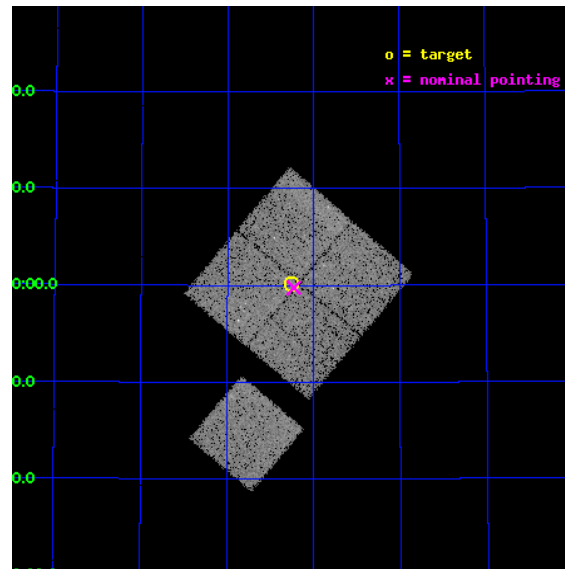
L2 Processing Date : May 16 2012

## Contents

<b>1</b>	<b>Front</b>	<b>2</b>
<b>2</b>	<b>OBI</b>	<b>3</b>
2.1	OBI . . . . .	3
2.1.1	Images . . . . .	3
2.1.2	Bias . . . . .	3
2.1.3	Parameters . . . . .	4
2.1.4	Events . . . . .	4
2.2	Compared Parameters . . . . .	5
2.3	Aspect . . . . .	6
2.4	Star Slots . . . . .	9
2.4.1	Slot 3 . . . . .	9
2.4.2	Slot 4 . . . . .	10
2.4.3	Slot 5 . . . . .	11
2.4.4	Slot 6 . . . . .	12
2.4.5	Slot 7 . . . . .	13
2.5	FID Slots . . . . .	14
2.5.1	Slot 0 . . . . .	14
2.5.2	Slot 1 . . . . .	15
2.5.3	Slot 2 . . . . .	16
<b>A</b>	<b>Summary</b>	<b>17</b>
A.1	Status . . . . .	17
A.2	Comments . . . . .	17

# 1 Front

seq_num	900796	Sequence number
obs_id	9721	Observation id
title	The Evolution of Faint AGN at High Redshift	Proposal title
observer	Prof Kirpal Nandra	Principal investigator
object	AEGIS-1	Source name
dtcycle	0	&#160
cycle	P	events from which exps? Prim/Second/Both
ra_targ	215.064583	Observer's specified target RA [deg]
dec_targ	53.002694	Observer's specified target Dec [deg]
ra_nom	215.05740515891	Nominal RA [deg]
dec_nom	52.995869752164	Nominal Dec [deg]
roll_nom	220.21442877939	Nominal Roll [deg]
revision	2	Processing version of data
ontime	16769.586613894	Sum of GTIs [s]
livetime	16550.479619193	Livetime [s]
ontime0	16769.463493884	Sum of GTIs [s]
ontime1	16769.504513979	Sum of GTIs [s]
ontime2	16766.404583633	Sum of GTIs [s]
ontime3	16769.586613894	Sum of GTIs [s]
ontime6	16766.281463683	Sum of GTIs [s]
l2events	58246	Number of level 2 events

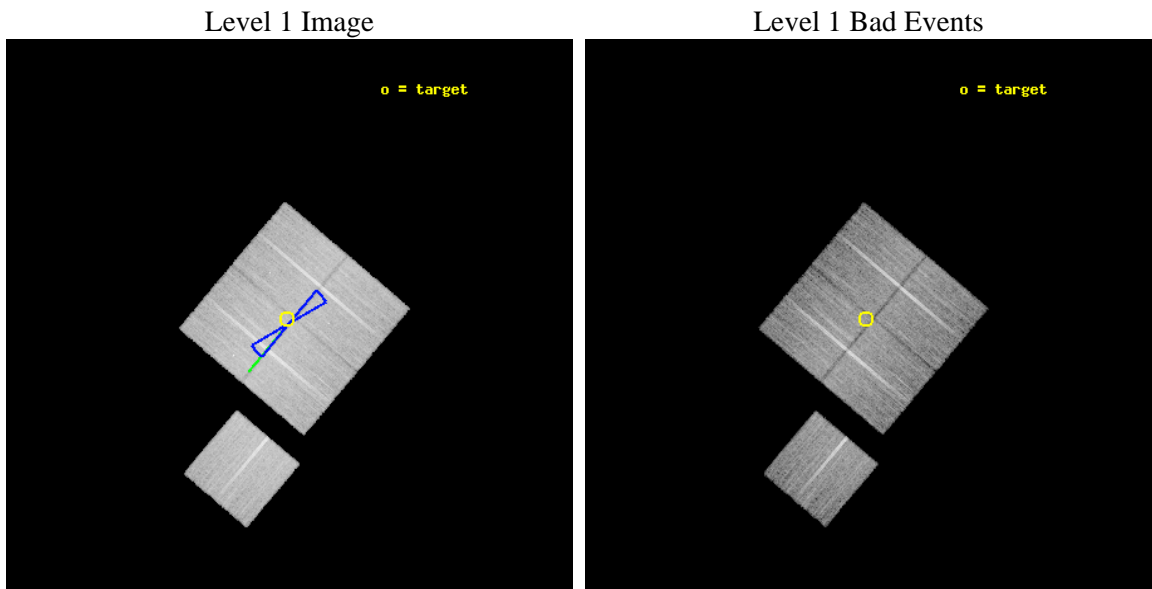




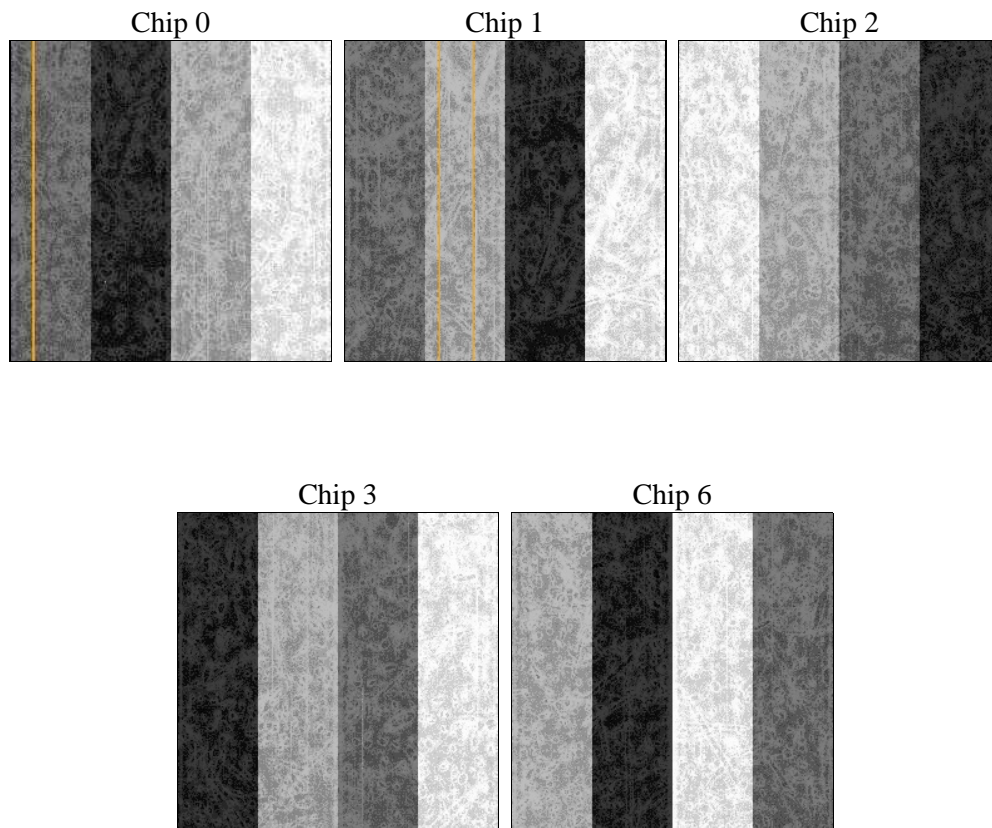
## 2 OBI

### 2.1 OBI

#### 2.1.1 Images



#### 2.1.2 Bias



### 2.1.3 Parameters

obi_num	0	Obi number	sched_exp_time	16991.788000	[s] Scheduled observation exposure time
ascdsver	8.4.4	Processing system revision	ontime	16769.586613894	Sum of GTIs [s]
caldsver	4.4.9	&#160	ontime0	16769.463493884	Sum of GTIs [s]
date	2012-05-16T14:40:00	Date and time of file creation	ontime1	16769.504513979	Sum of GTIs [s]
revision	2	Processing version of data	ontime2	16766.404583633	Sum of GTIs [s]
			ontime3	16769.586613894	Sum of GTIs [s]
			ontime6	16766.281463683	Sum of GTIs [s]
			l1events	667633	Number of level 1 events

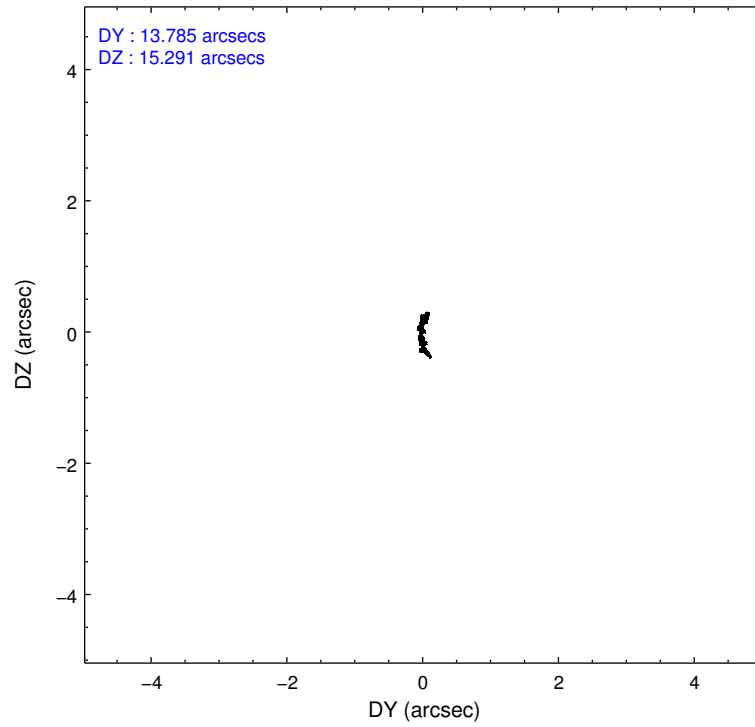
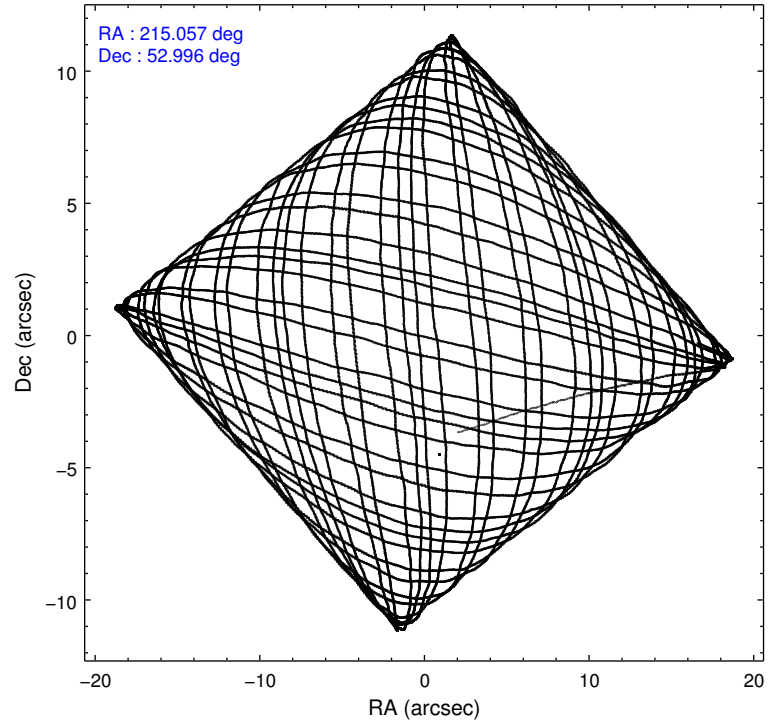
### 2.1.4 Events

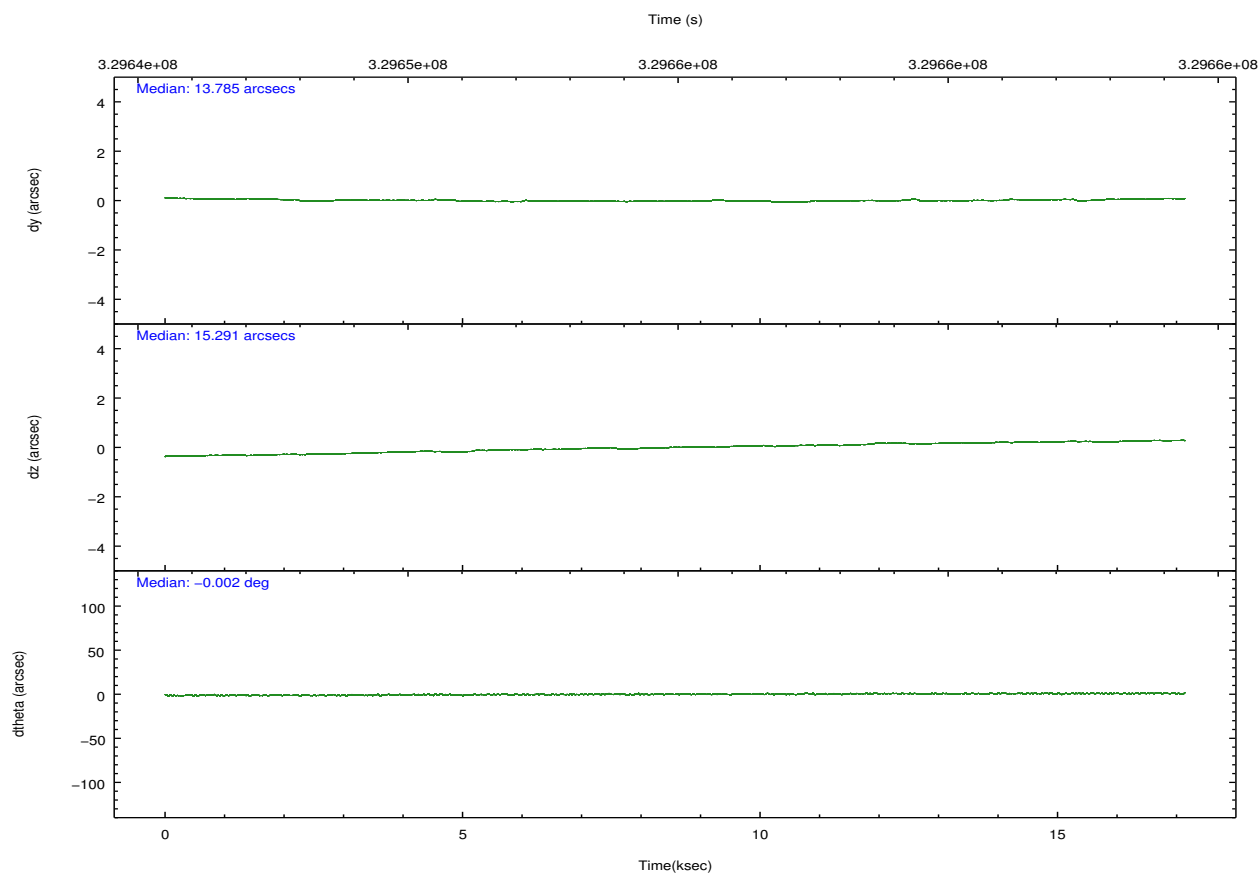
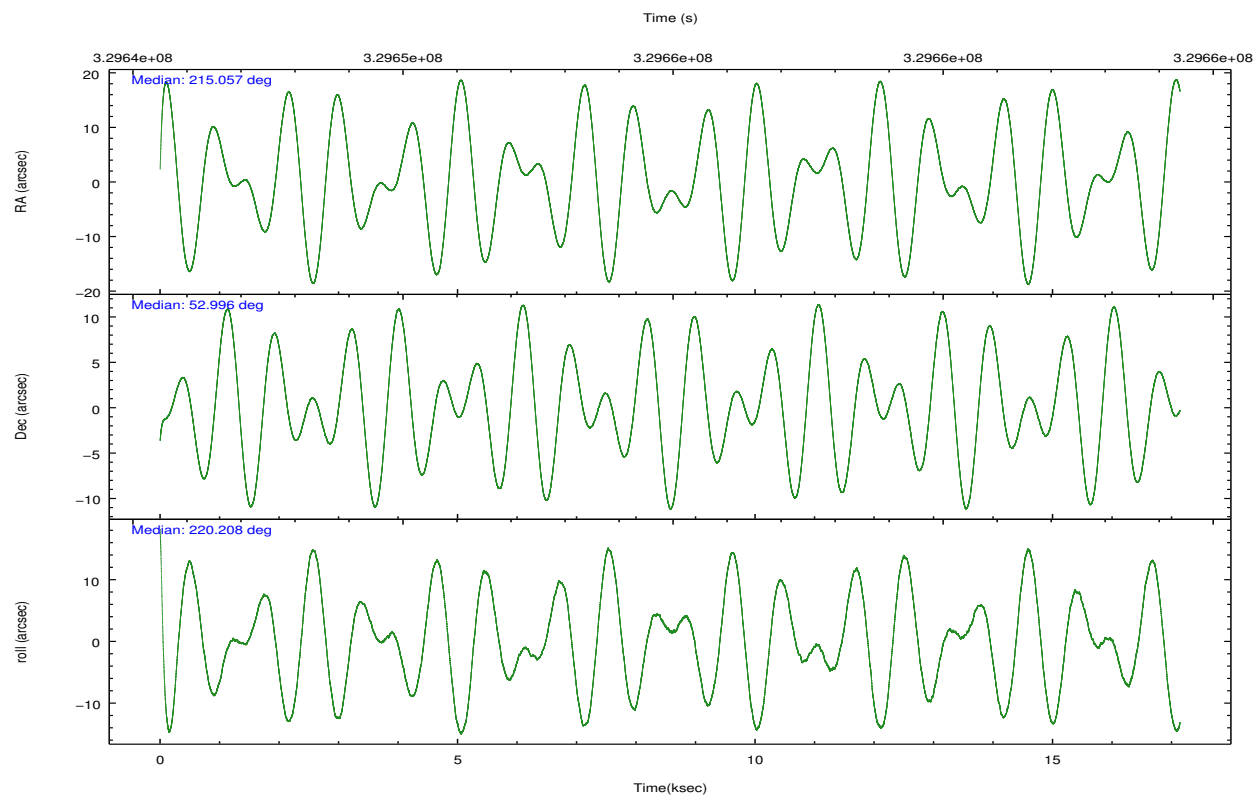
	ccd 0	ccd 1	ccd 2	ccd 3	ccd 6		ccd 0	ccd 1	ccd 2	ccd 3	ccd 6
level 1 events	127444	127851	140479	137732	134127	grade 0 events	4894	5610	4634	4806	4685
rejected events	113318	112215	127167	124328	120255		3%	4%	3%	3%	3%
rejected %	88%	87%	90%	90%	89%	grade 1 events	75	67	91	82	69
							0%	0%	0%	0%	0%
						grade 2 events	3553	3529	3281	2877	3101
							2%	2%	2%	2%	2%
						grade 3 events	1578	1673	1413	1530	1502
							1%	1%	1%	1%	1%
						grade 4 events	1453	1635	1472	1523	1533
							1%	1%	1%	1%	1%
						grade 5 events	4766	5456	4605	5733	5292
							3%	4%	3%	4%	3%
						grade 6 events	2650	3192	2520	2671	3052
							2%	2%	1%	1%	2%
						grade 7 events	108475	106689	122463	118510	114893
							85%	83%	87%	86%	85%

## 2.2 Compared Parameters

Parameter	Planned	Actual	Parameter	Planned	Actual
Instrument	ACIS	ACIS	Obspar format version number	7	7
Detector	ACIS-01236	ACIS-01236	Obspar file type	PREDICTED	ACTUAL
Grating	NONE	NONE	Obspar update status	NONE	UPDATED
Data mode	VFAINT	VFAINT	CCD I0 on	Y	Y
Observation mode	POINTING	POINTING	CCD I1 on	Y	Y
[deg] Pointing RA	215.072665	215.0574051589107	CCD I2 on	Y	Y
[deg] Pointing Dec	53.021792	52.99586975216354	CCD I3 on	Y	Y
[deg] Pointing Roll	219.993539	220.214428779389	CCD S0 on	N	N
[deg] Roll angle	50.000000	50.000000	CCD S1 on	N	N
[deg] Roll tolerance	10.000000	10.000000	CCD S2 on	O1	Y
Roll constraint allows 180D rotation	Y	Y	CCD S3 on	N	N
[mm] SIM focus pos	-0.782348	-0.7809083437167272	CCD S4 on	N	N
[mm] SIM defocus	0	0.001439871863259334	CCD S5 on	N	N
[mm] SIM translation stage pos	-233.592463	-233.5874344608287	Number of optional ACIS chips dropped	0	0
[mm] SIM translation stage offset	0	-0.005018542100998502	On-chip summing requested	N	N
[s] Observation start time (MET)	329646518.184000	329645354.42676	Subarray requested	NONE	NONE
Observation start date	2008-06-12T08:27:33	2008-06-12T08:09:14	Alternating exposures requested	N	N
[s] Observation end time (MET)	329663510.184000	329663741.90266	[s] Primary exposure time	0.000000	3.1
Observation end date	2008-06-12T13:10:45	2008-06-12T13:15:41			
Read mode	TIMED	TIMED			

## 2.3 Aspect



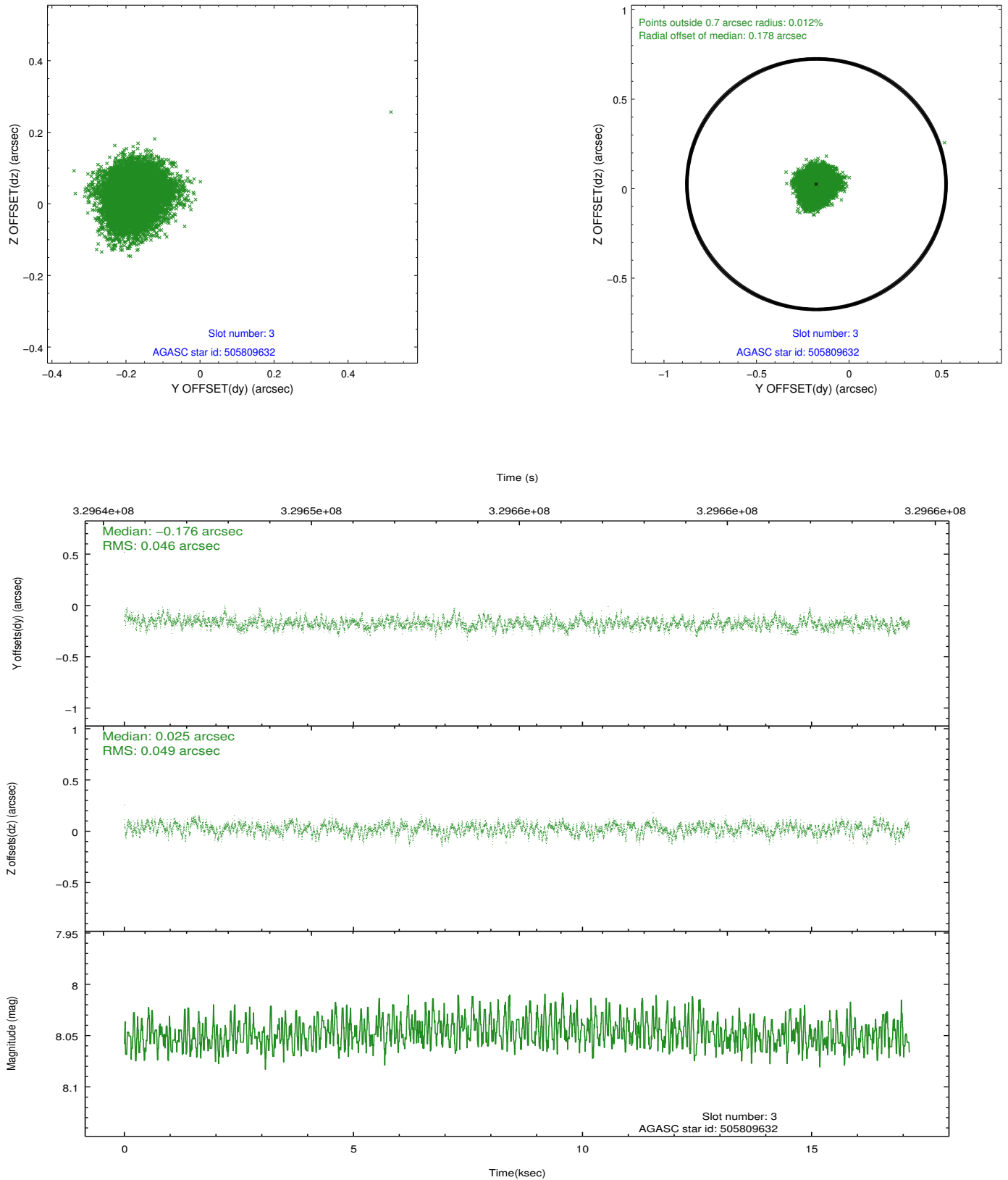


### Slot Statistics

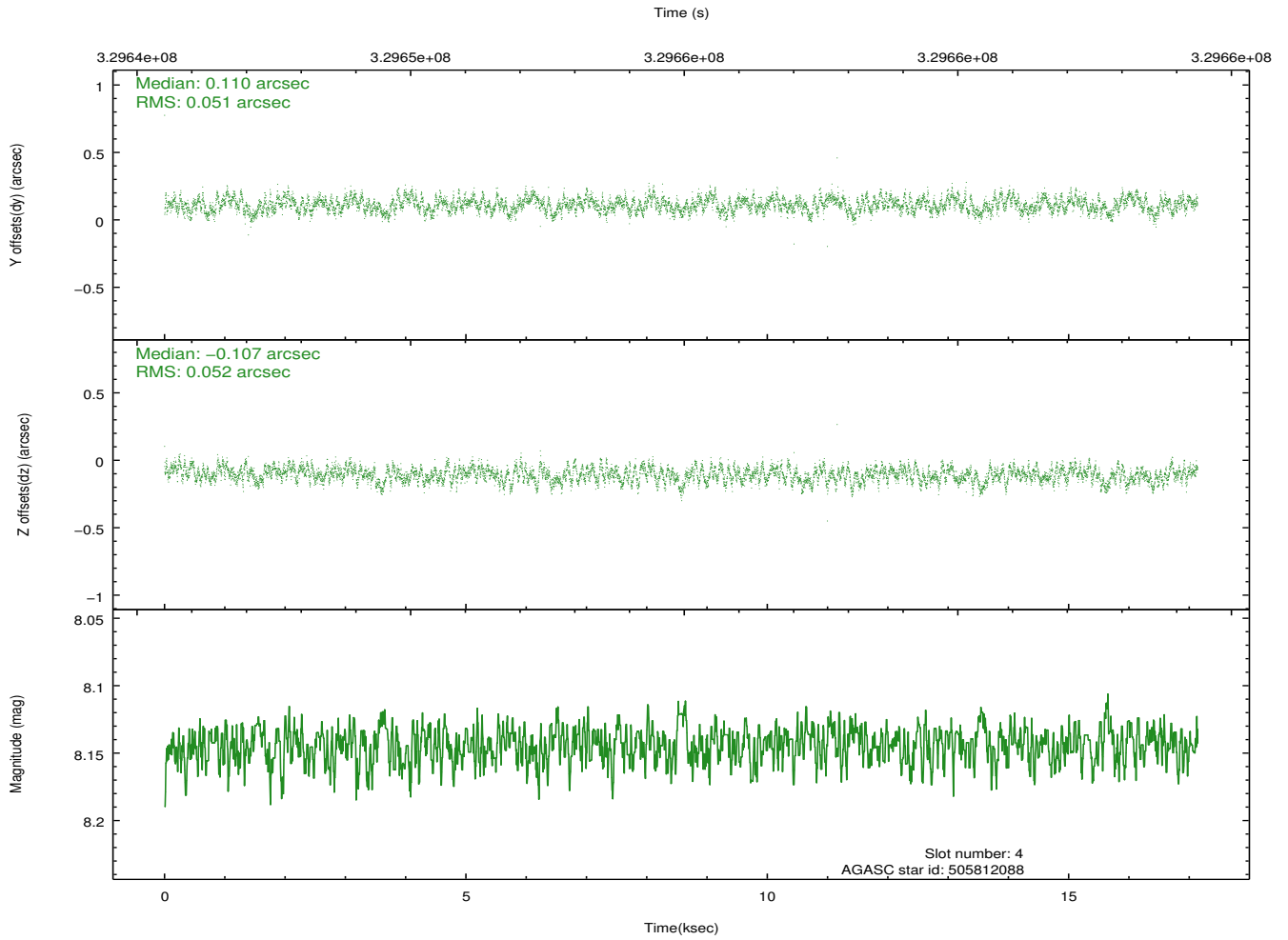
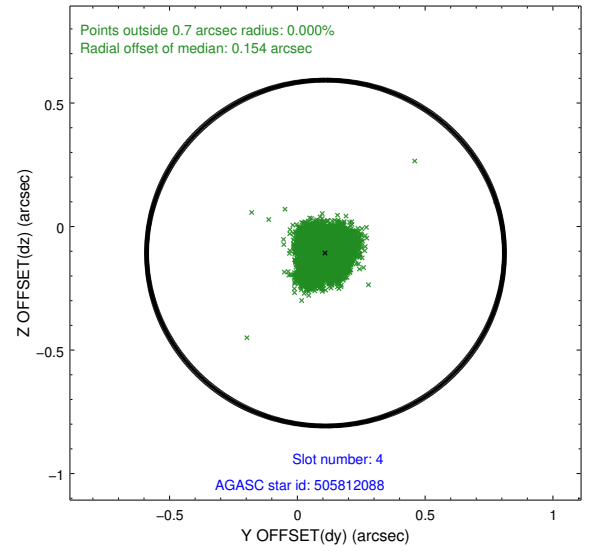
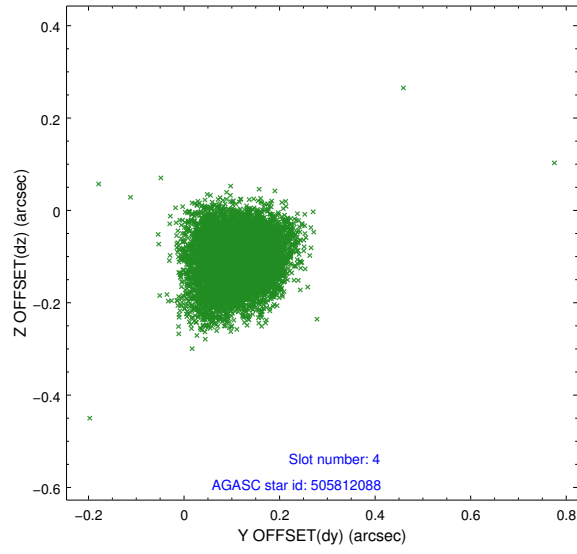
slot	status	id	mag	n_pts	med_dy	med_dz	dr1	dr2	ra	dec	mean_y	mean_z
0	FID	ACIS-I-1	7.02	4181	0.041	-0.023	0.013	0.037	0.000000	0.000000	925.74	-838.90
1	FID	ACIS-I-5	7.01	4181	-0.234	0.036	0.008	0.021	0.000000	0.000000	-1822.51	1058.51
2	FID	ACIS-I-6	7.02	4181	0.102	0.057	0.010	0.022	0.000000	0.000000	391.07	1703.32
3	GUIDE	505809632	8.05	8359	-0.176	0.025	0.071	0.112	215.499426	53.521185	-1856.77	-792.53
4	GUIDE	505812088	8.14	8358	0.110	-0.107	0.078	0.124	214.186617	53.263562	895.10	-1902.10
5	GUIDE	505812376	7.65	8361	0.137	-0.155	0.053	0.085	214.039537	52.937930	1901.57	-1221.81
6	GUIDE	505815928	8.32	8355	-0.180	0.069	0.055	0.092	216.234742	53.074559	-2060.45	1453.91
7	GUIDE	455871352	8.11	8359	0.107	0.173	0.062	0.101	215.099961	52.172669	1918.45	2381.30

## 2.4 Star Slots

### 2.4.1 Slot 3

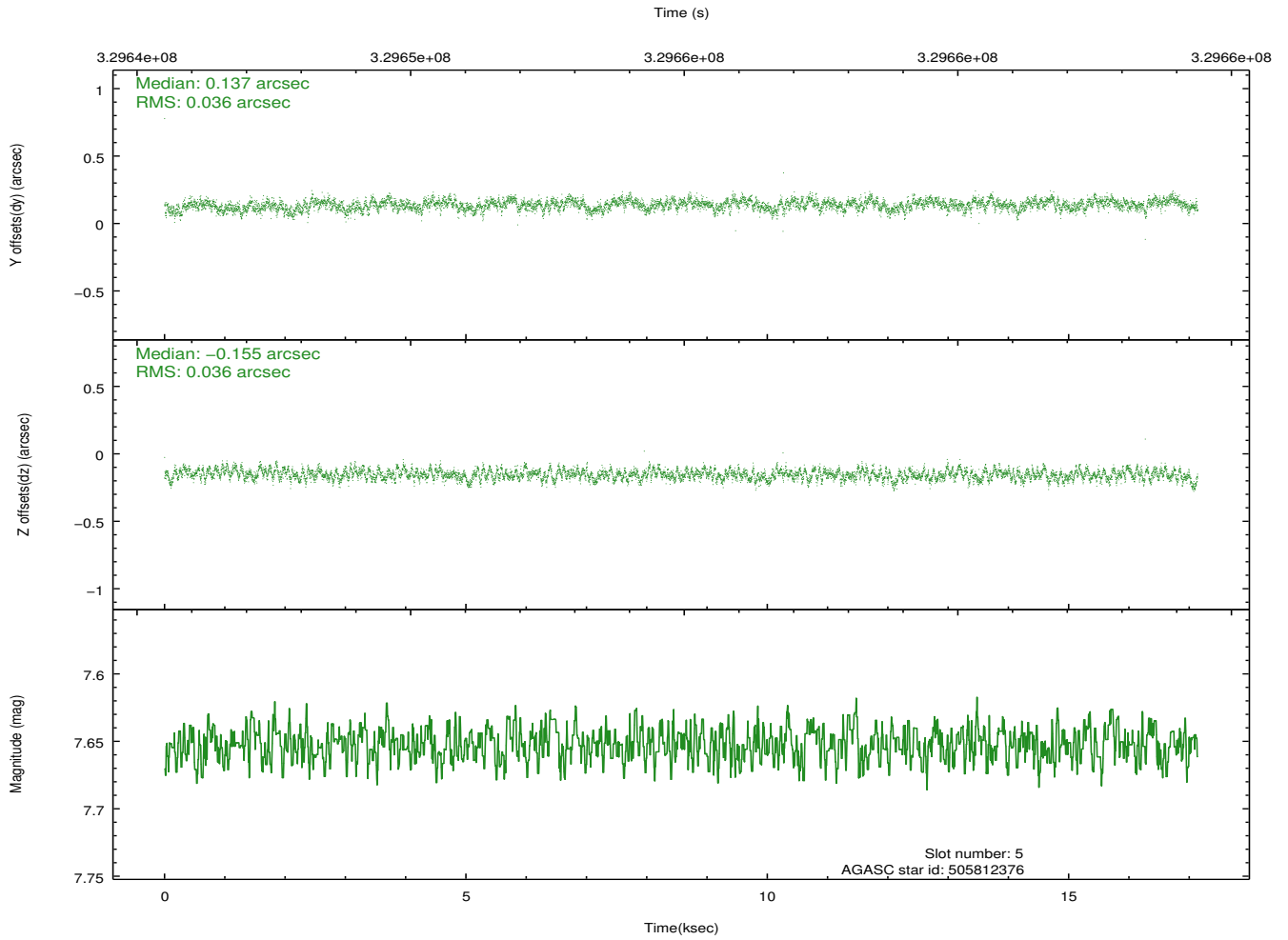
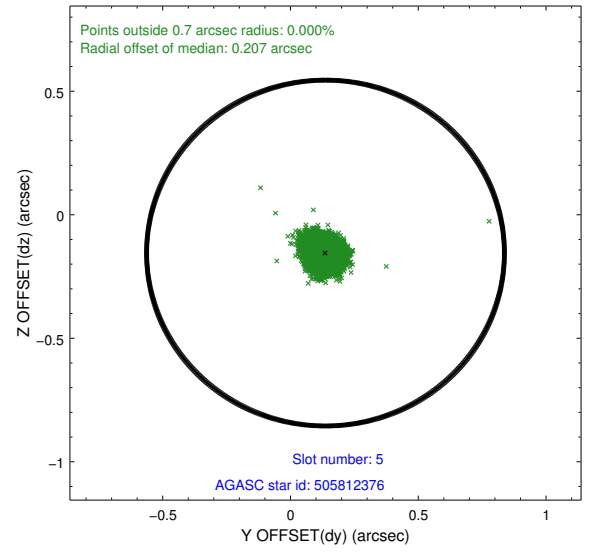
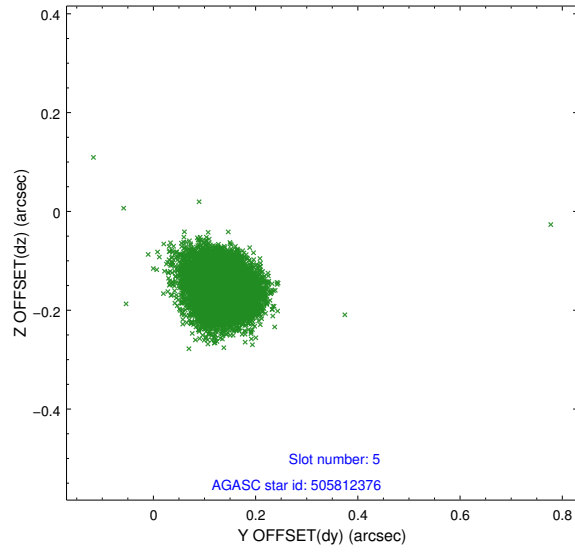


## 2.4.2 Slot 4

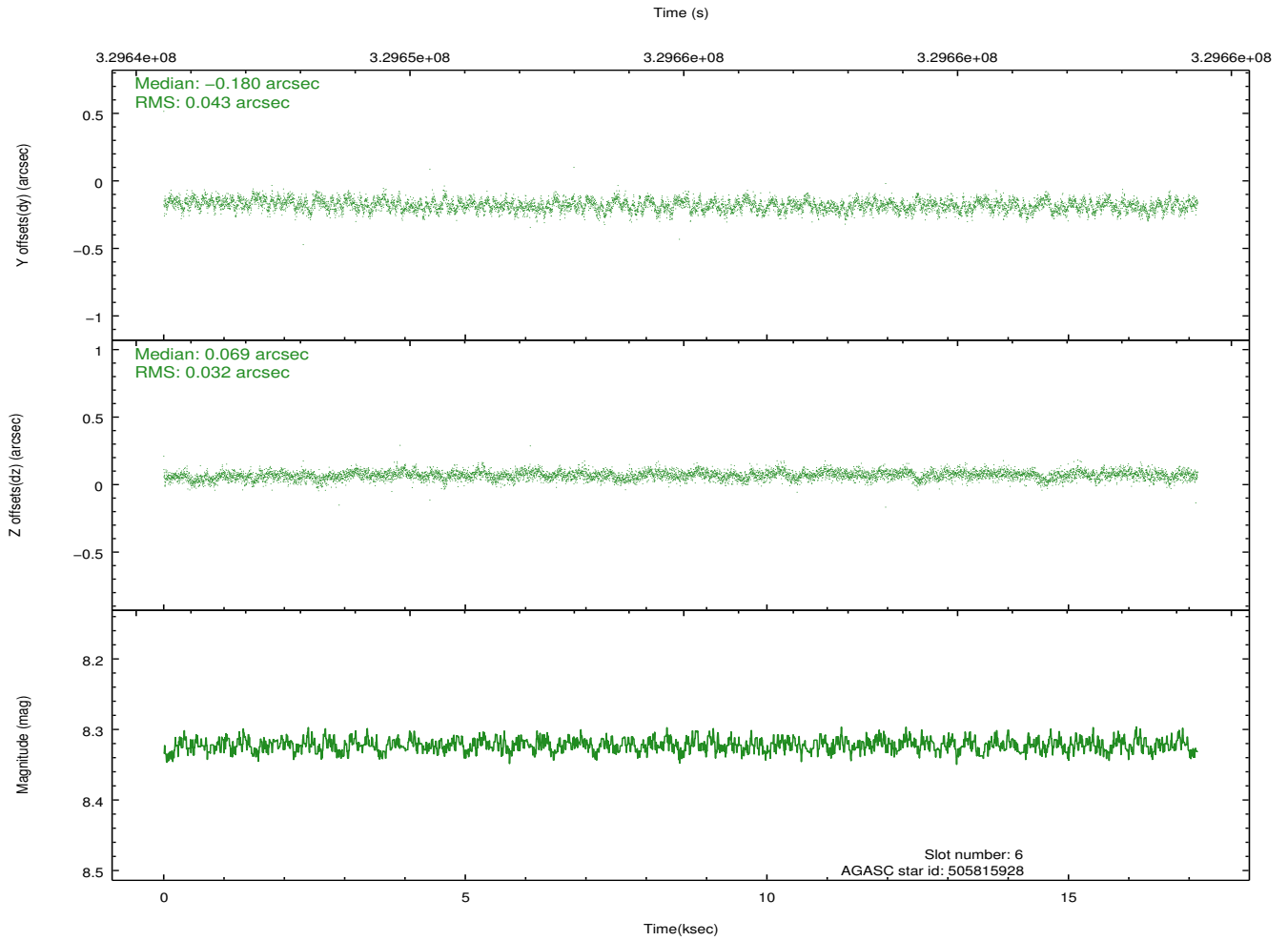
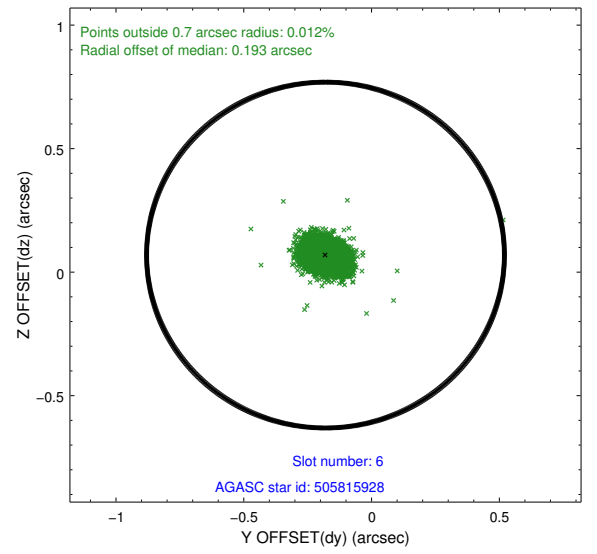
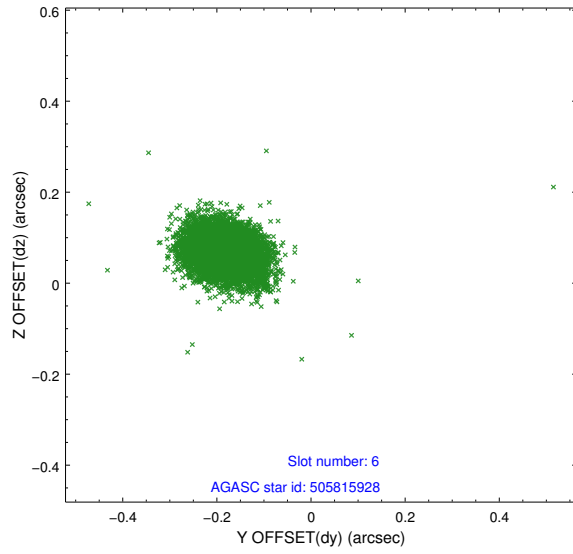




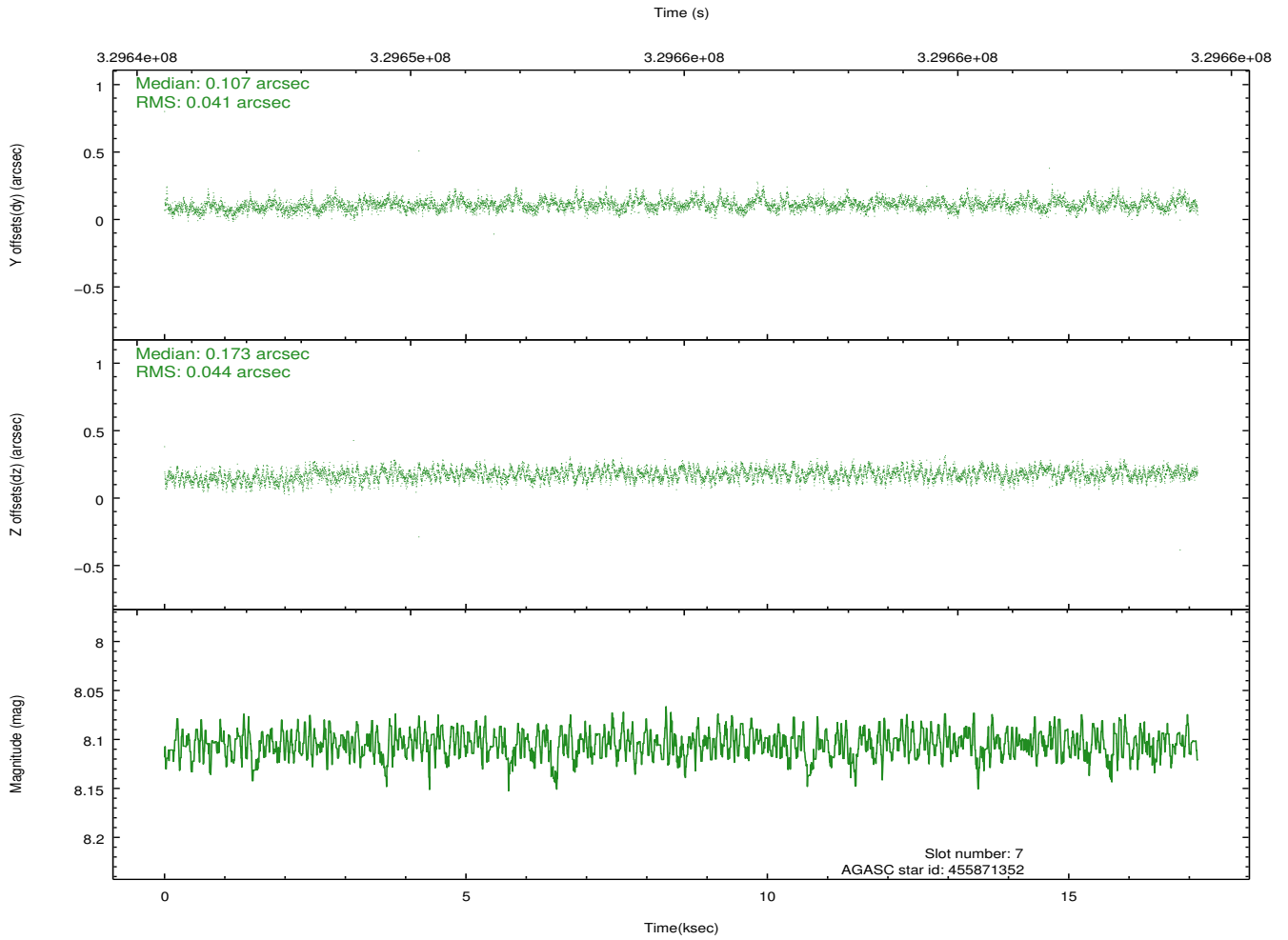
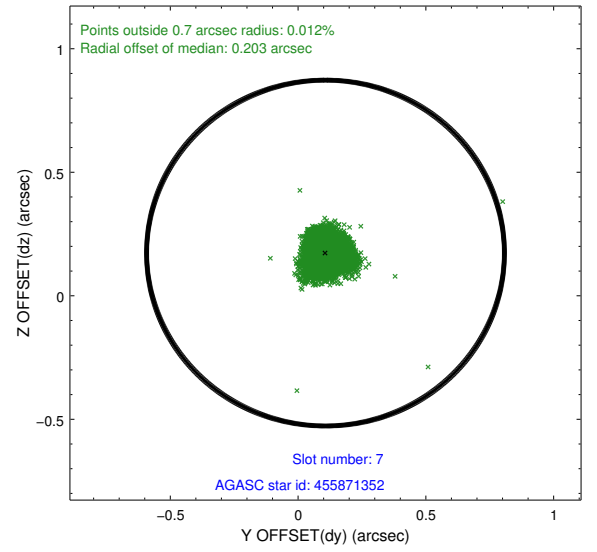
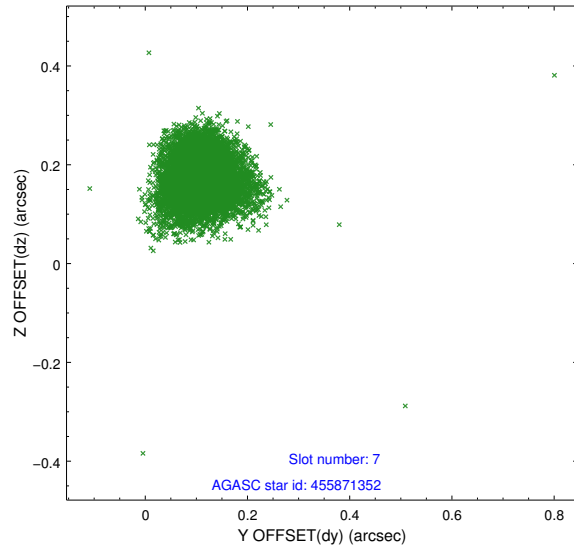
### 2.4.3 Slot 5



## 2.4.4 Slot 6

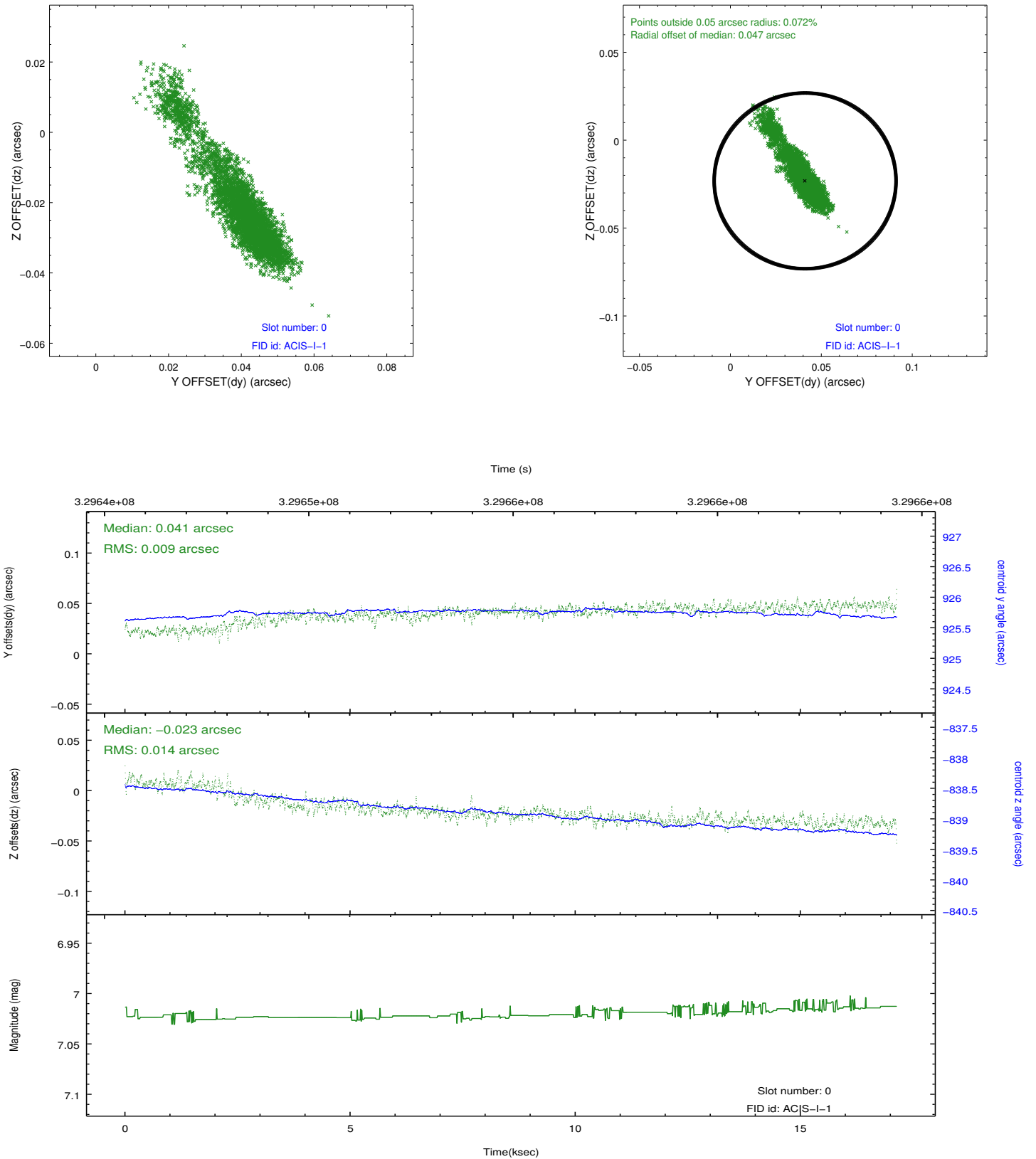


## 2.4.5 Slot 7

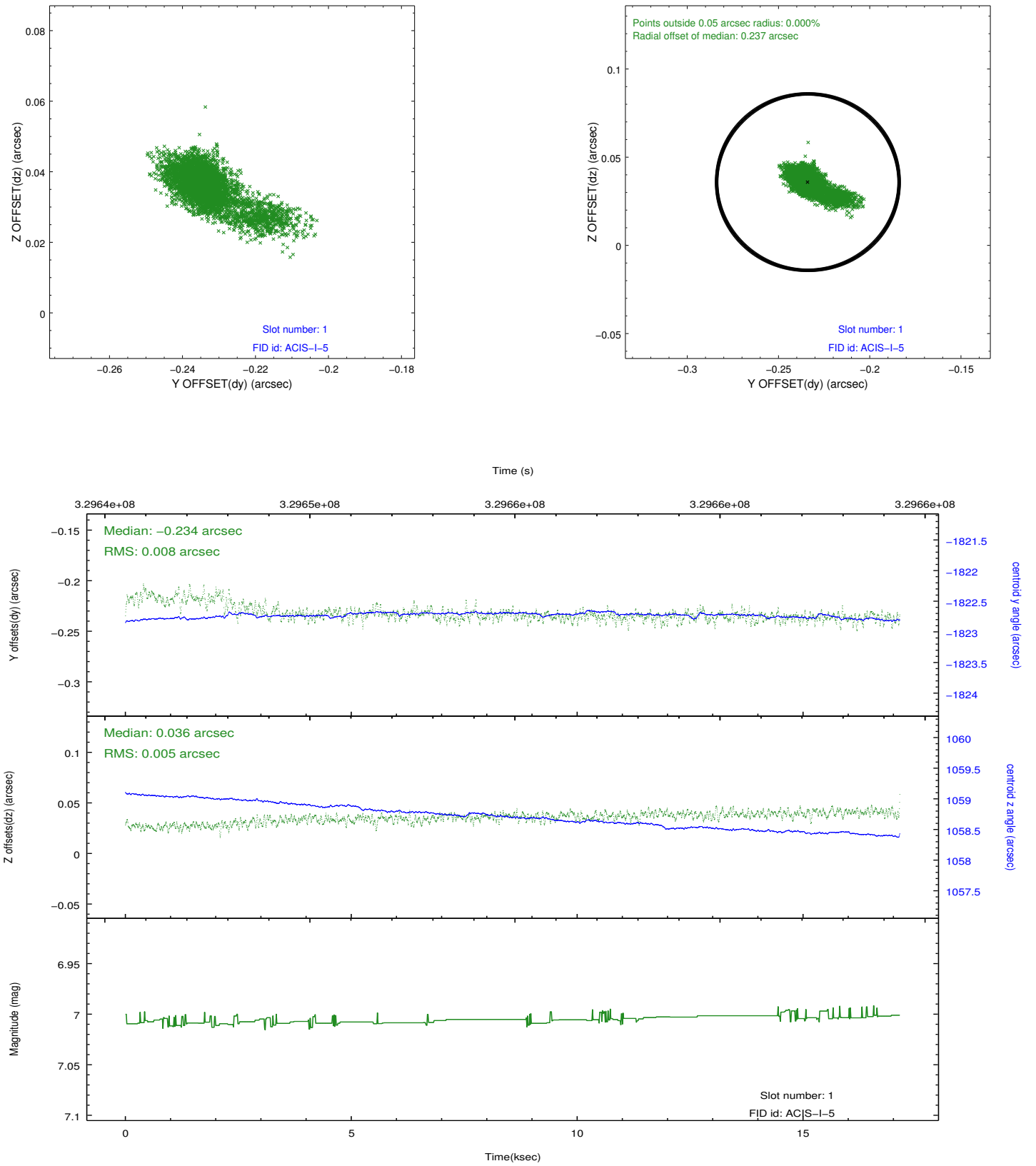


## 2.5 FID Slots

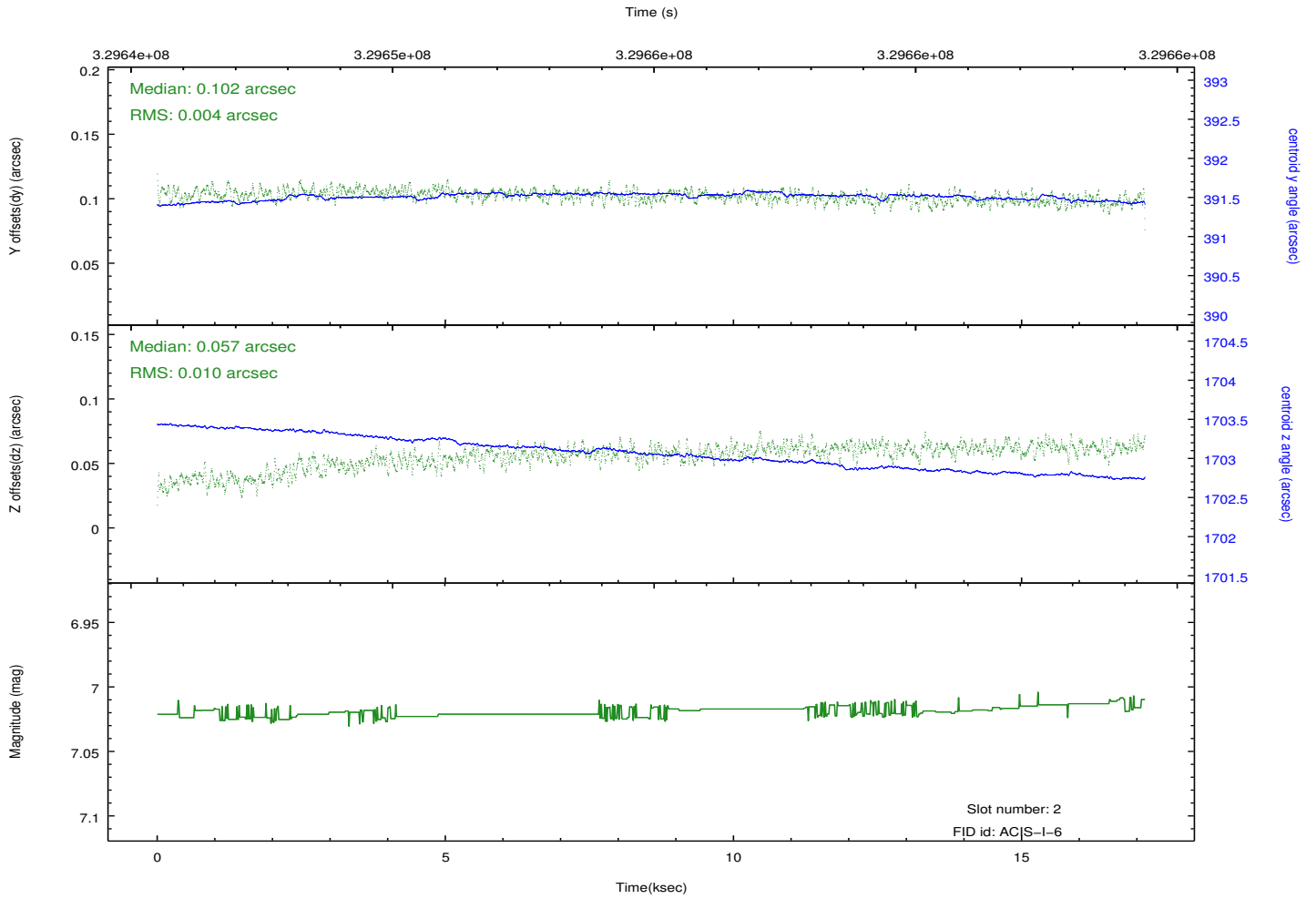
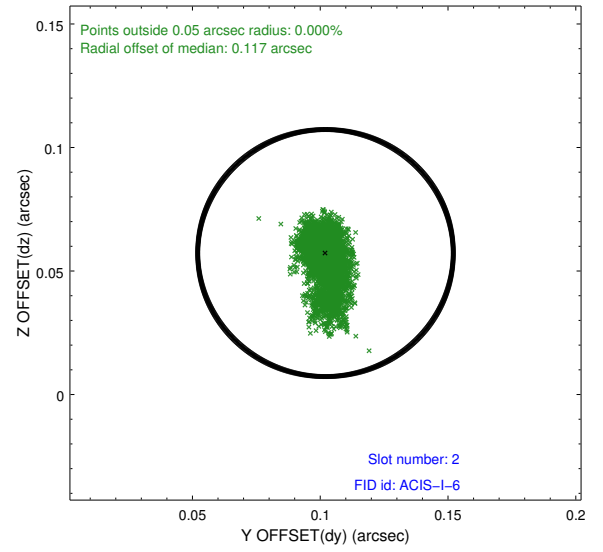
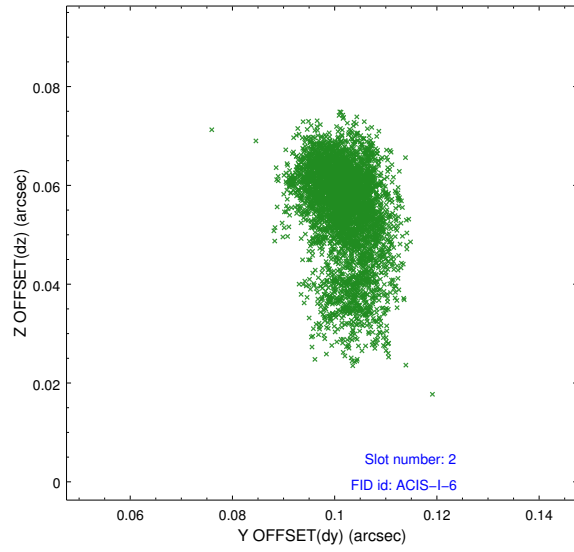
### 2.5.1 Slot 0



## 2.5.2 Slot 1



### 2.5.3 Slot 2



## A Summary

### A.1 Status

V&V Scientist	Jen Lauer
V&V Date (YYYY-MM-DD)	2012.05.22
V&V Edition	1
V&V Disposition and Status	OK
V&V Charge Time	16.7710001

### A.2 Comments

Joint proposal with Spitzer. Roll constraint met.