

V&V Reference Report

L2 ASCDS Version : 8.4.4

Observation 9711 - L2 Version 3
Chandra X-Ray Center

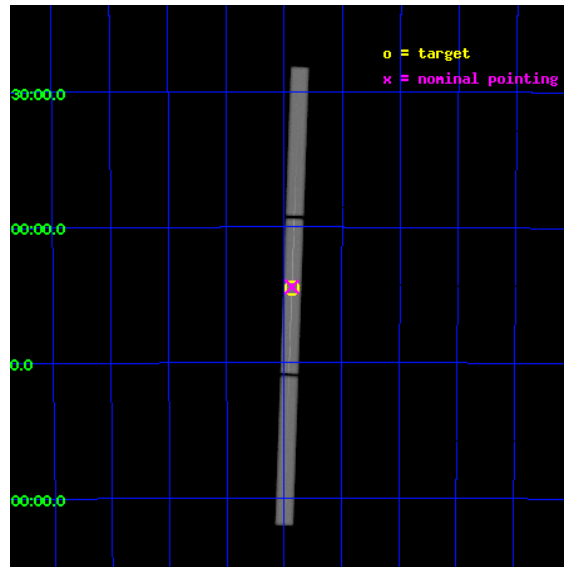
L2 Processing Date : Aug 12 2012

Contents

1	Front	2
2	OBI	3
2.1	OBI	3
2.1.1	Images	3
2.1.2	Parameters	4
2.1.3	Events	4
2.2	Compared Parameters	5
2.3	Aspect	6
2.4	Star Slots	9
2.4.1	Slot 3	9
2.4.2	Slot 4	10
2.4.3	Slot 5	11
2.4.4	Slot 6	12
2.4.5	Slot 7	13
2.5	FID Slots	14
2.5.1	Slot 0	14
2.5.2	Slot 1	15
2.5.3	Slot 2	16
3	Gratings	17
3.1	LETG Arm	17
A	Summary	19
A.1	Status	19
A.2	Comments	19

1 Front

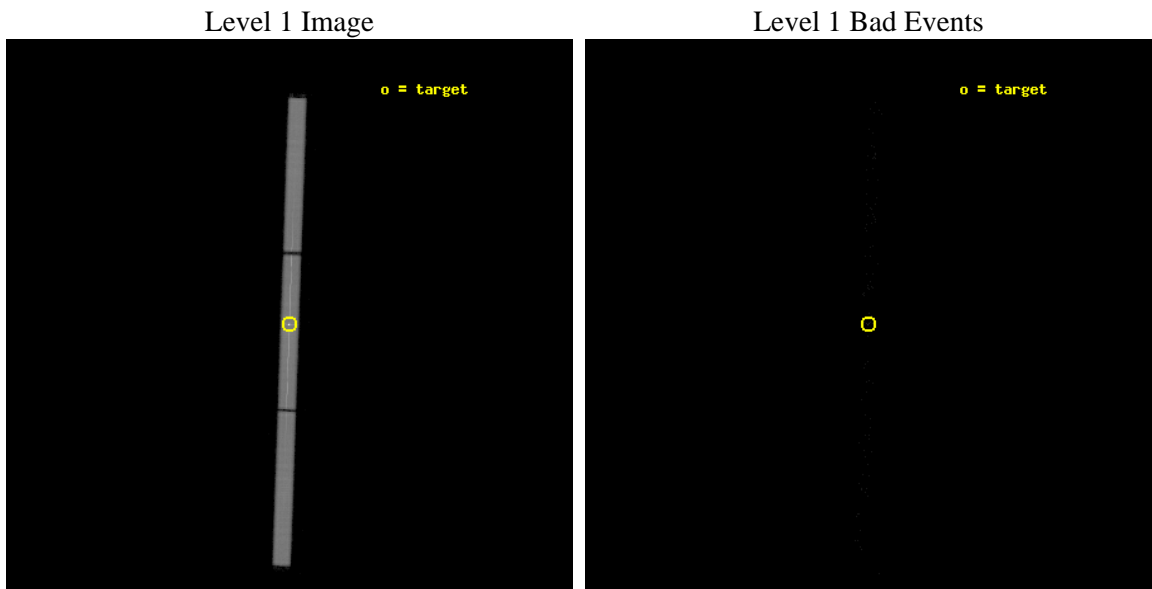
seq_num	790188	Sequence number
obs_id	9711	Observation id
title	AO9 Calibration Observations of PKS2155-304	Proposal title
observer	Dr. CXC Calibration	Principal investigator
object	PKS2155-304	Source name
ra_targ	329.716667	Observer's specified target RA [deg]
dec_targ	-30.225556	Observer's specified target Dec [deg]
ra_nom	329.71645704418	Nominal RA [deg]
dec_nom	-30.220619096397	Nominal Dec [deg]
roll_nom	91.906007412553	Nominal Roll [deg]
revision	3	Processing version of data
ontime	10188.62862736	[s]
livetime	10083.66196744	Ontime multiplied by DTCOR
l2events	912209	Number of level 2 events



2 OBI

2.1 OBI

2.1.1 Images



2.1.2 Parameters

obi_num	0	Obi number	sched_exp_time	10000.000000	[s] Scheduled observation exposure time
ascdsver	8.4.5	Processing system revision	ontime	10189.781748712	[s]
caldsver	4.5.1.1	 	l1events	1201908	Number of level 1 events
date	2012-08-12T14:48:46	Date and time of file creation			
revision	3	Processing version of data			

2.1.3 Events

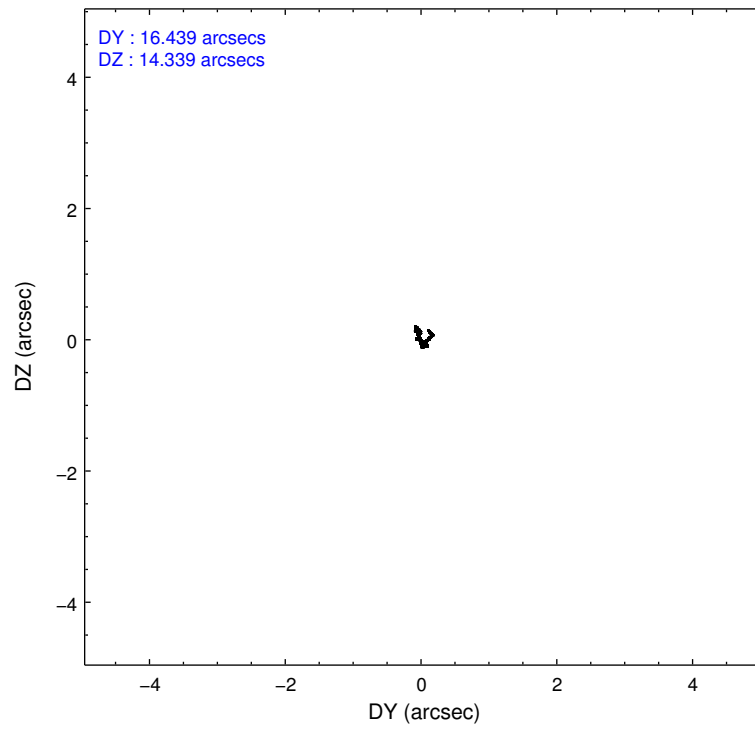
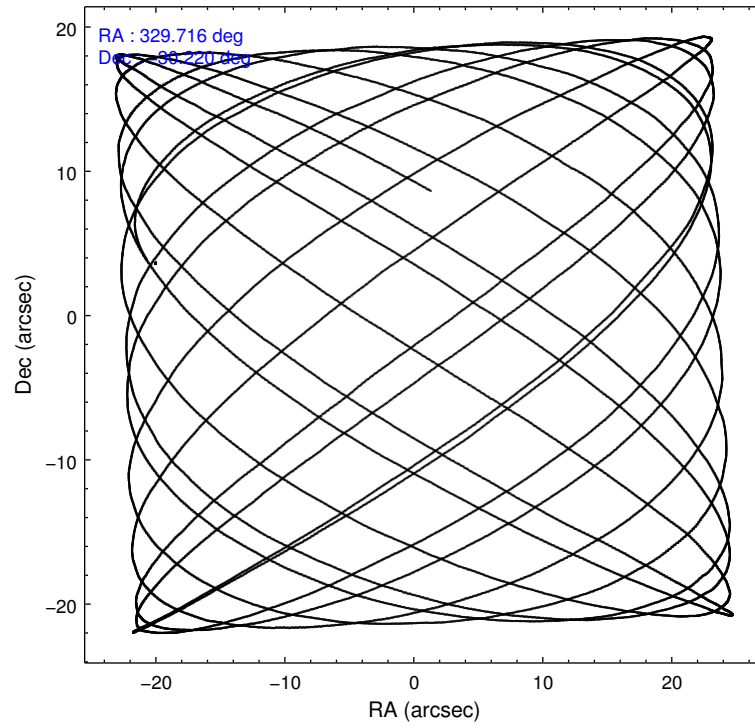
Level 1 Events

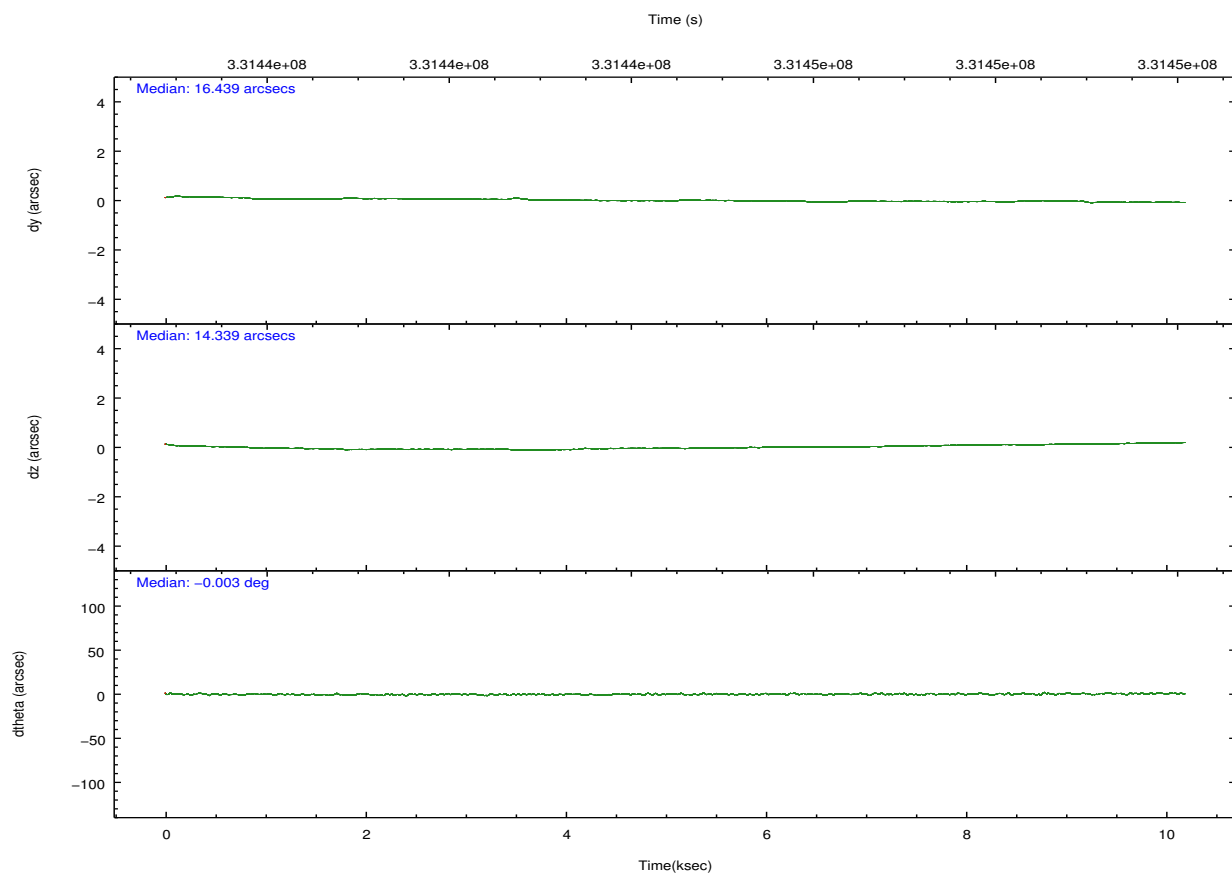
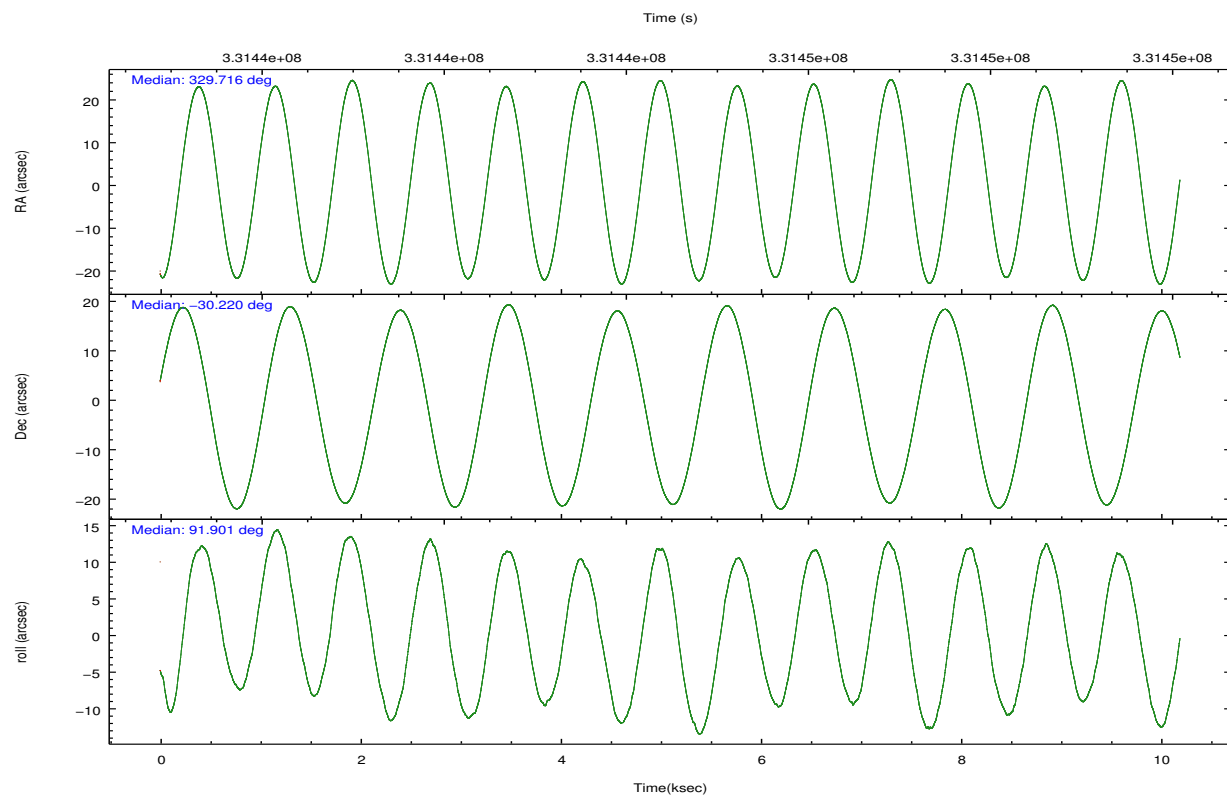
	segment 1	segment 2	segment 3
level 1 events	375781	444841	381286
rejected events	10127	11192	10253
rejected %	2%	2%	2%

2.2 Compared Parameters

Parameter	Planned	Actual	Parameter	Planned	Actual
Instrument	HRC	HRC	Obspar format version number	7	7
Detector	HRC-S	HRC-S	Obspar file type	PREDICTED	ACTUAL
Grating	LETG	LETG	Obspar update status	NONE	UPDATED
Data mode	OBSERVING	OBSERVING			
Observation mode	POINTING	POINTING			
[deg] Pointing RA	329.735509	329.7164570441813			
[deg] Pointing Dec	-30.244373	-30.22061909639717			
[deg] Pointing Roll	91.848265	91.90600741255284			
[mm] SIM focus pos	-1.429586	-1.428180813131781			
[mm] SIM defocus	0.1037507710433287	0.1051558262725154			
[mm] SIM translation stage pos	250.455976	250.466033080201			
[mm] SIM translation stage offset	0	-0.01005468664627074			
[s] Observation start time (MET)	331439572.184000	331439107.58946			
Observation start date	2008-07-03T02:31:47	2008-07-03T02:25:07			
[s] Observation end time (MET)	331449572.184000	331449836.77749			
Observation end date	2008-07-03T05:18:27	2008-07-03T05:23:56			

2.3 Aspect



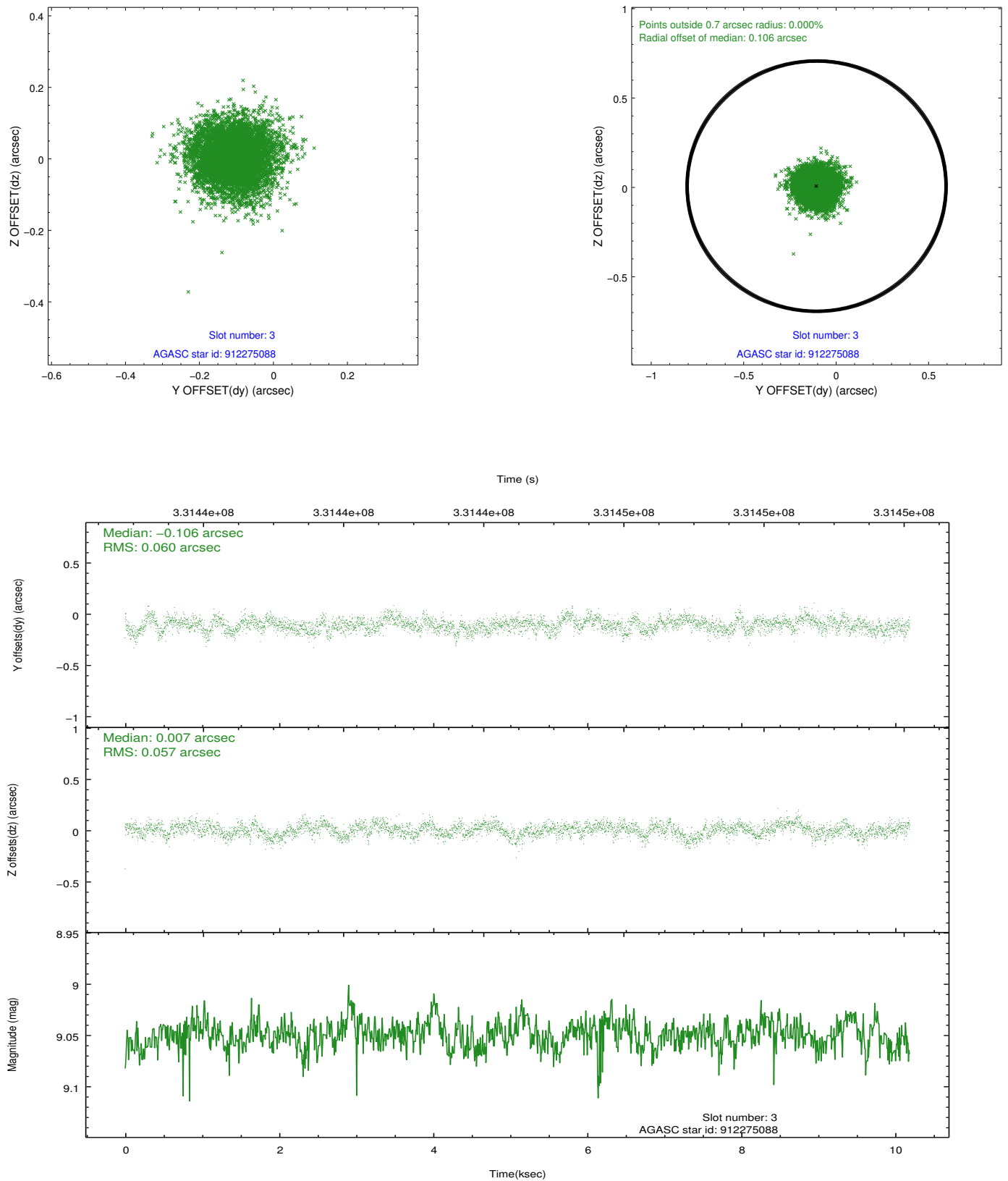


Slot Statistics

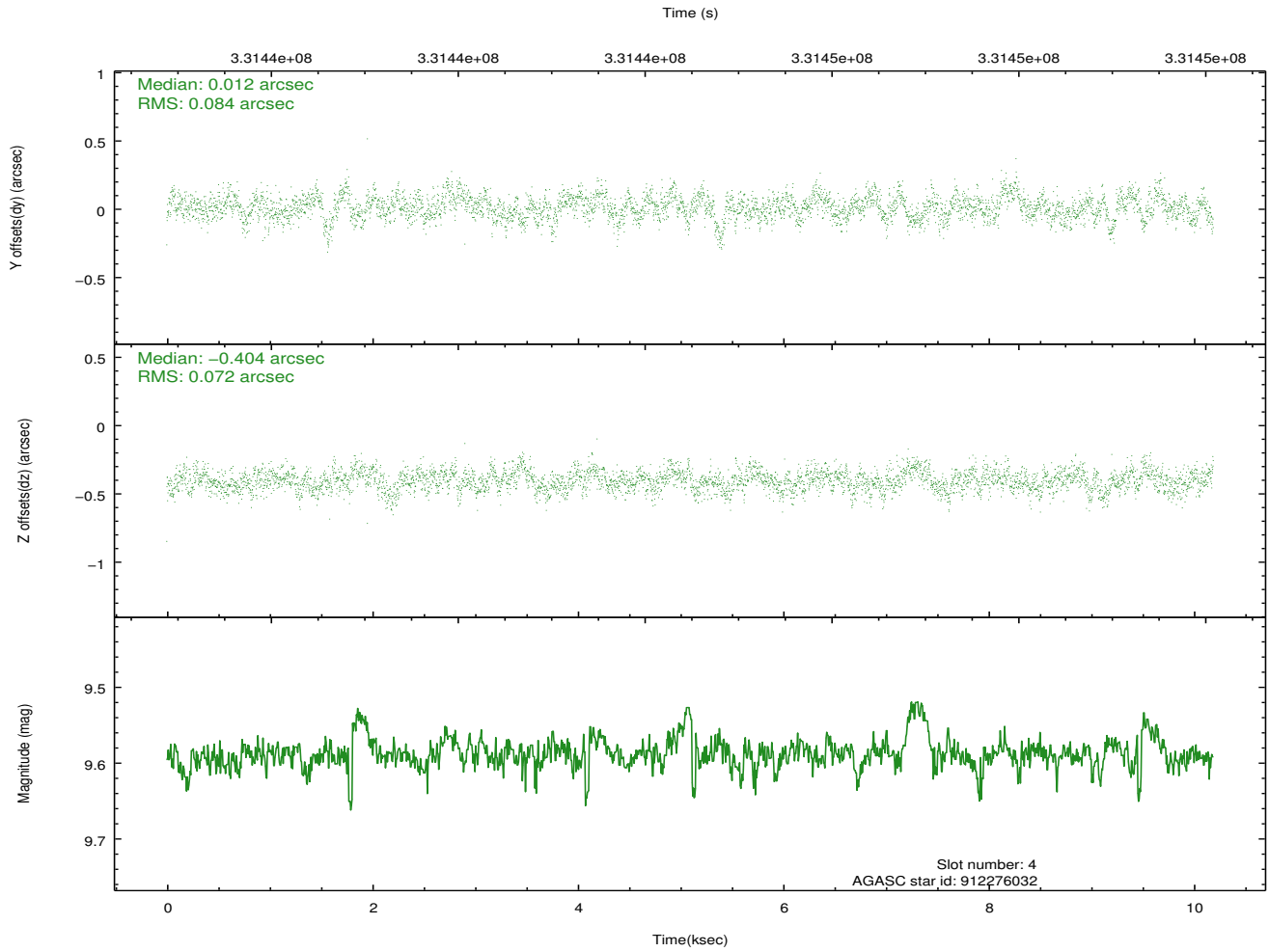
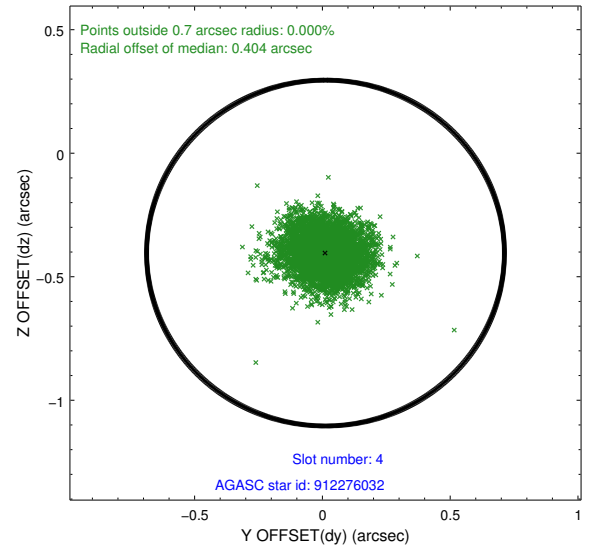
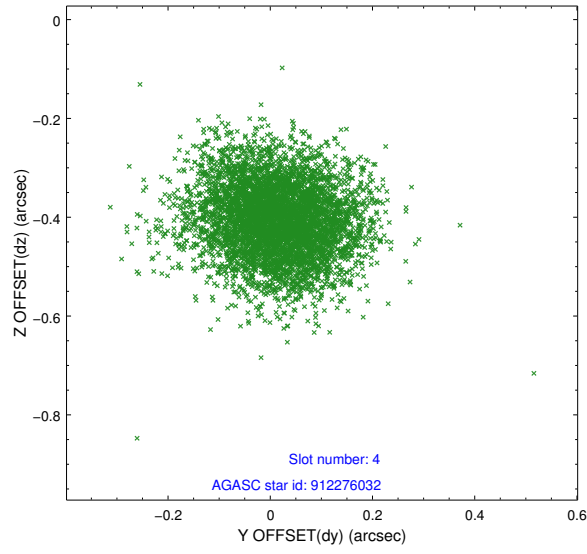
slot	status	id	mag	n_pts	med_dy	med_dz	dr1	dr2	ra	dec	mean_y	mean_z
0	FID	HRC-S-1	7.01	2486	0.060	-0.201	0.007	0.013	0.000000	0.000000	-1170.92	-463.24
1	FID	HRC-S-2	6.99	2486	0.252	-0.123	0.005	0.009	0.000000	0.000000	1228.48	-455.98
2	FID	HRC-S-3	7.02	2486	0.078	0.022	0.007	0.012	0.000000	0.000000	-1173.13	566.33
3	GUIDE	912275088	9.05	4966	-0.106	0.007	0.088	0.139	329.619228	-29.738698	1830.46	304.50
4	GUIDE	912276032	9.59	4953	0.012	-0.404	0.117	0.191	329.395967	-29.803466	1618.93	1008.50
5	GUIDE	981468128	9.36	4969	0.125	0.528	0.109	0.180	329.756350	-30.158334	307.37	-74.52
6	GUIDE	981471664	6.36	4972	-0.045	-0.236	0.076	0.119	328.981826	-30.605916	-1234.17	2375.24
7	GUIDE	981478152	9.40	4962	0.015	0.106	0.116	0.186	329.415589	-30.057192	703.51	975.02

2.4 Star Slots

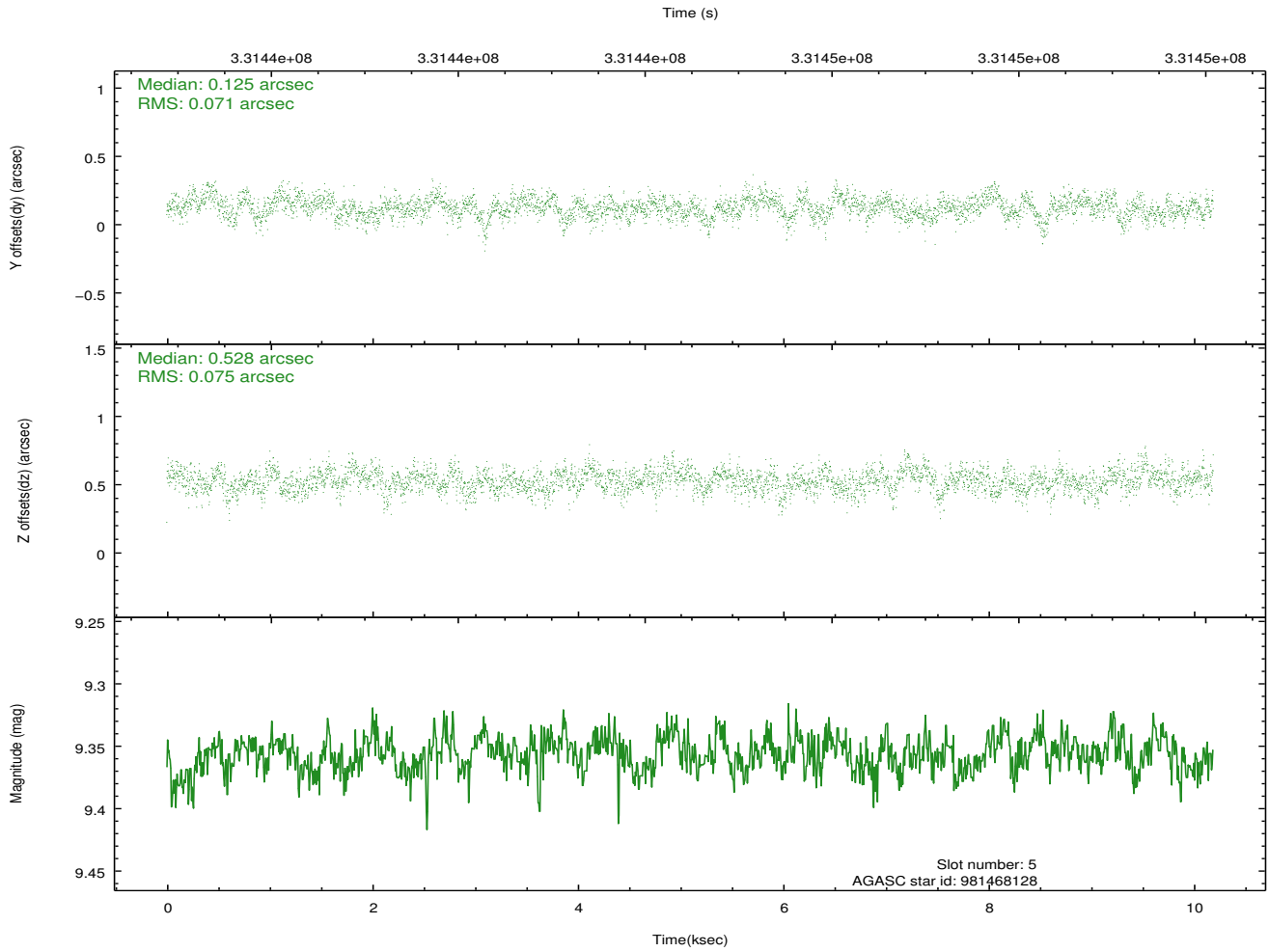
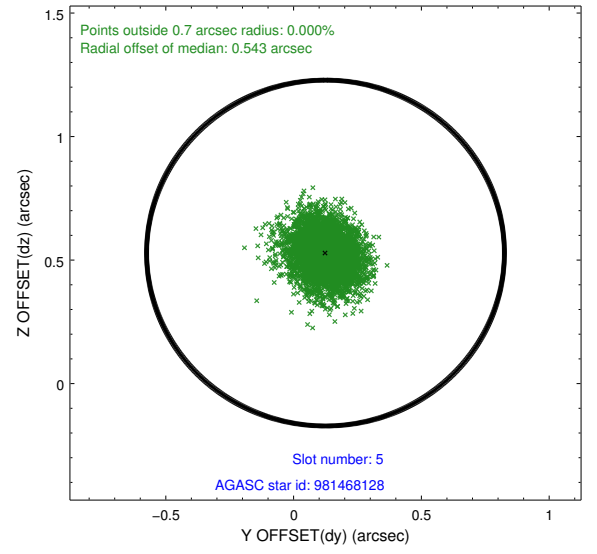
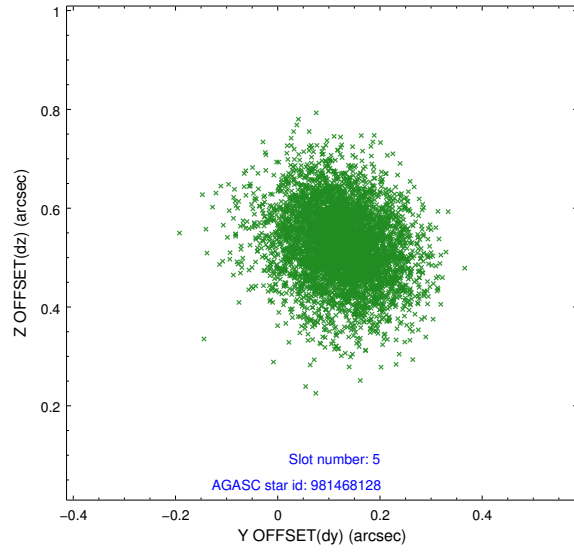
2.4.1 Slot 3



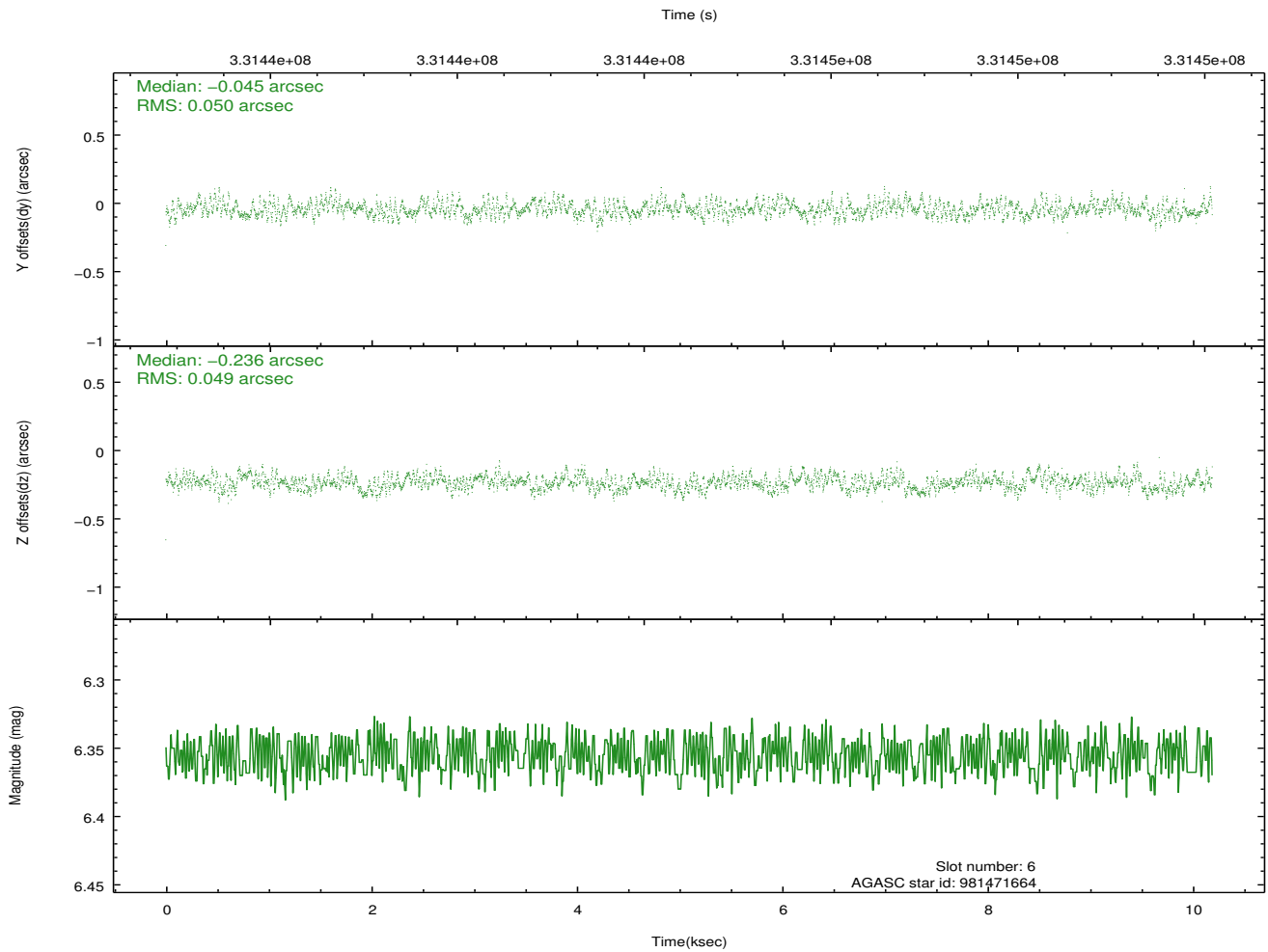
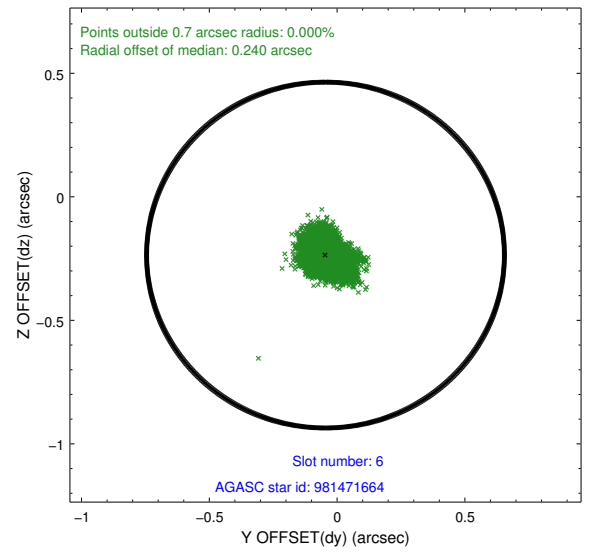
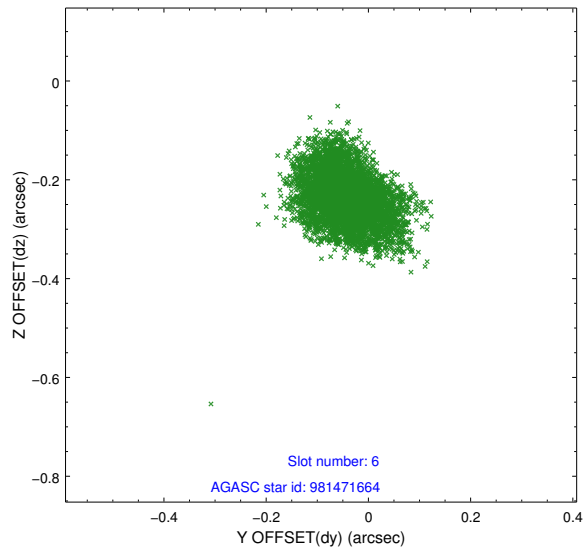
2.4.2 Slot 4



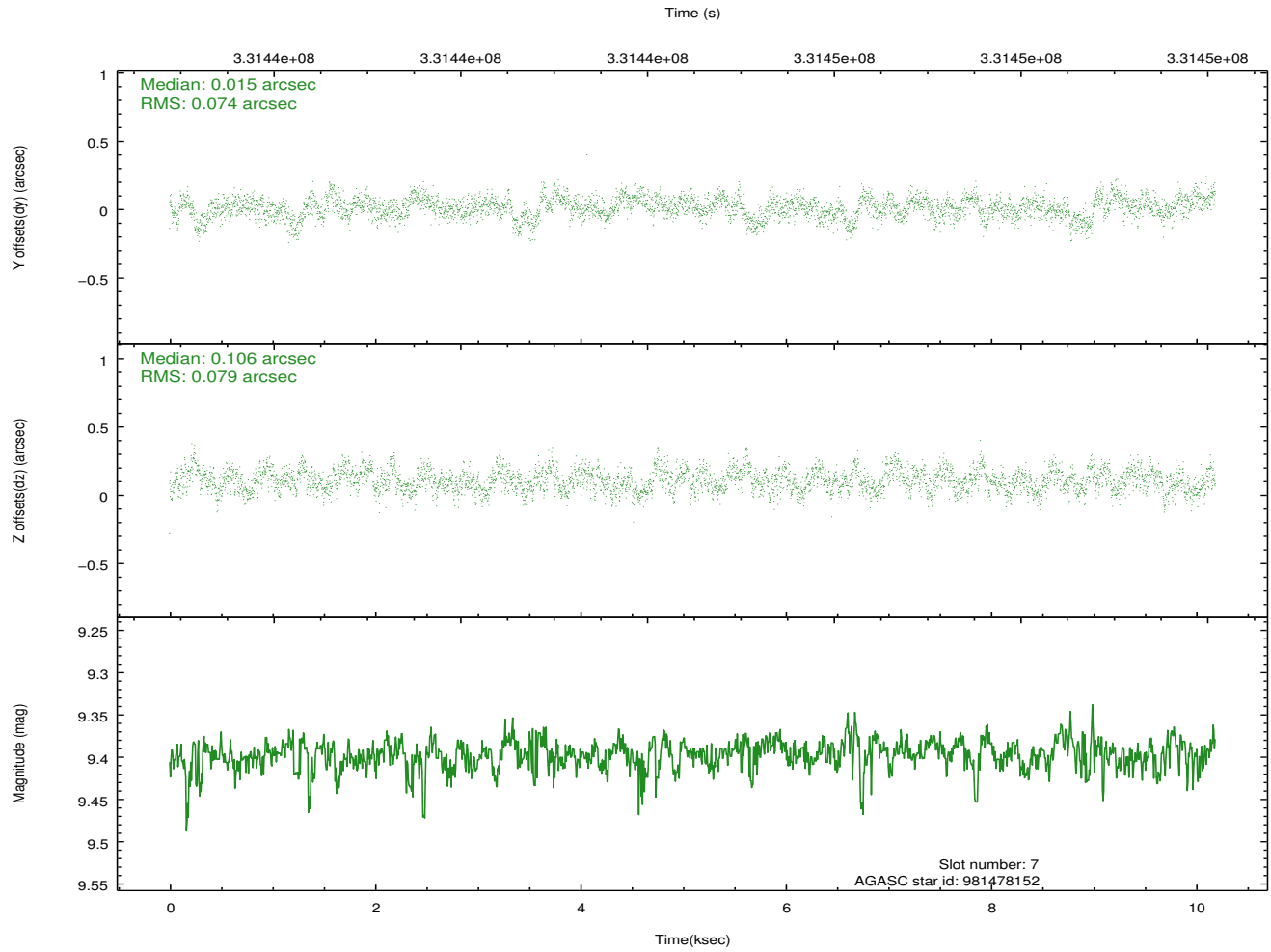
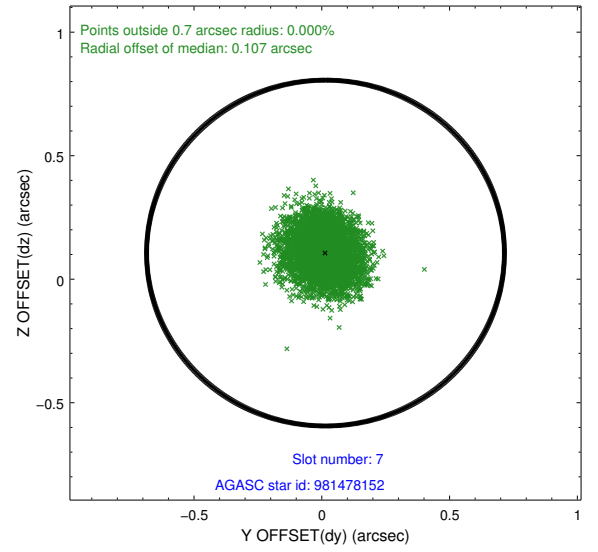
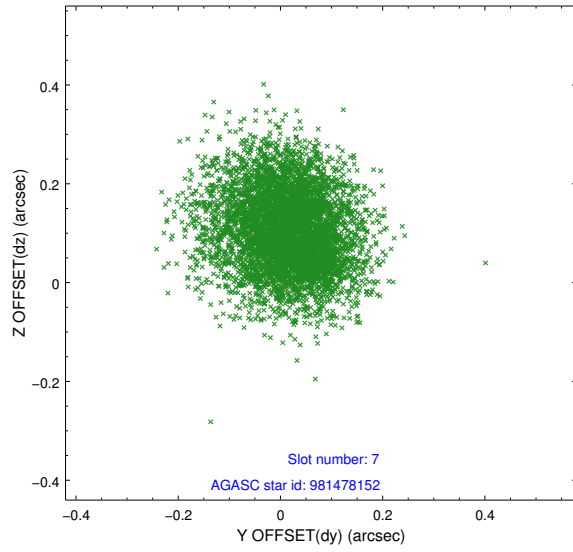
2.4.3 Slot 5



2.4.4 Slot 6

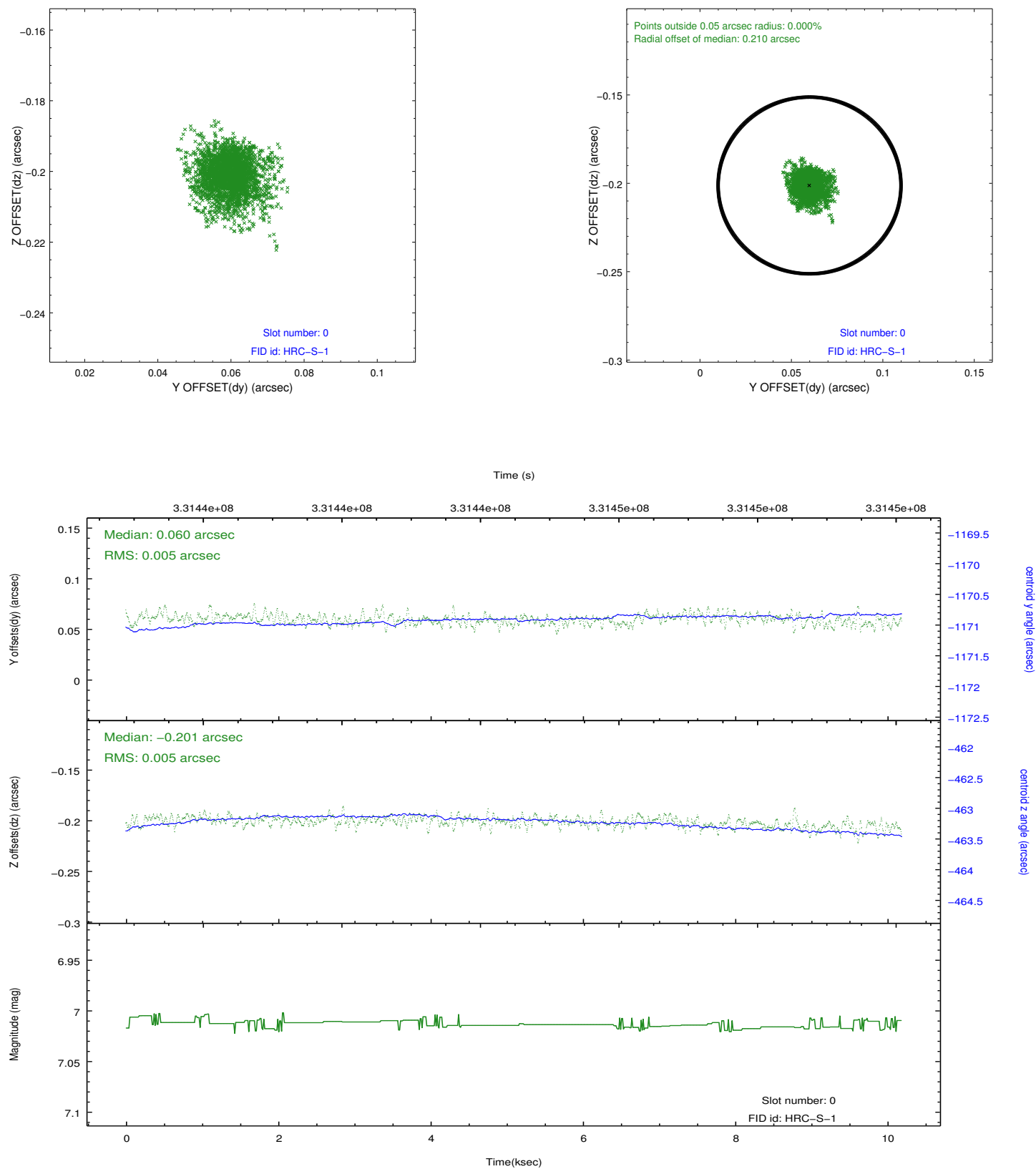


2.4.5 Slot 7

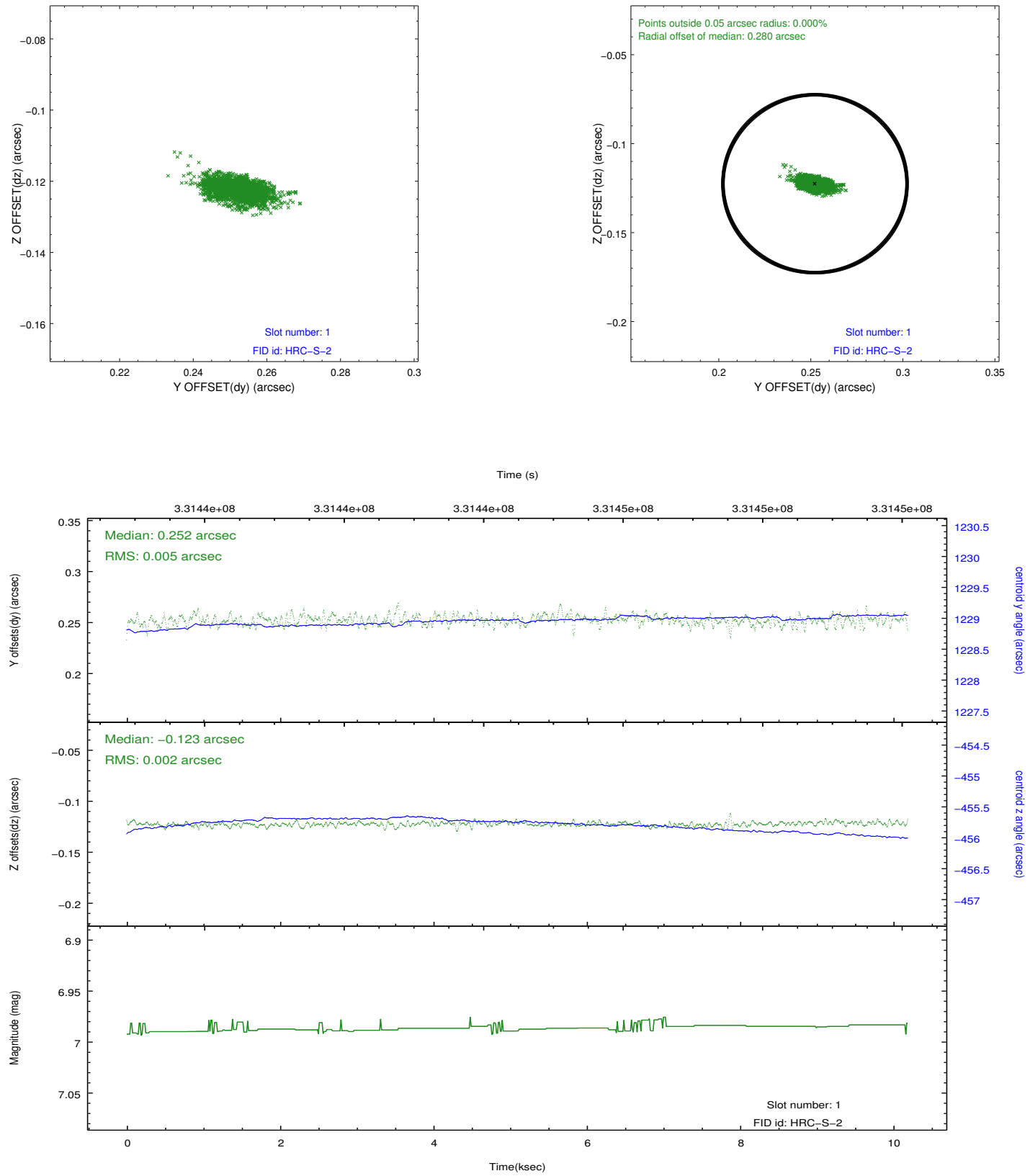


2.5 FID Slots

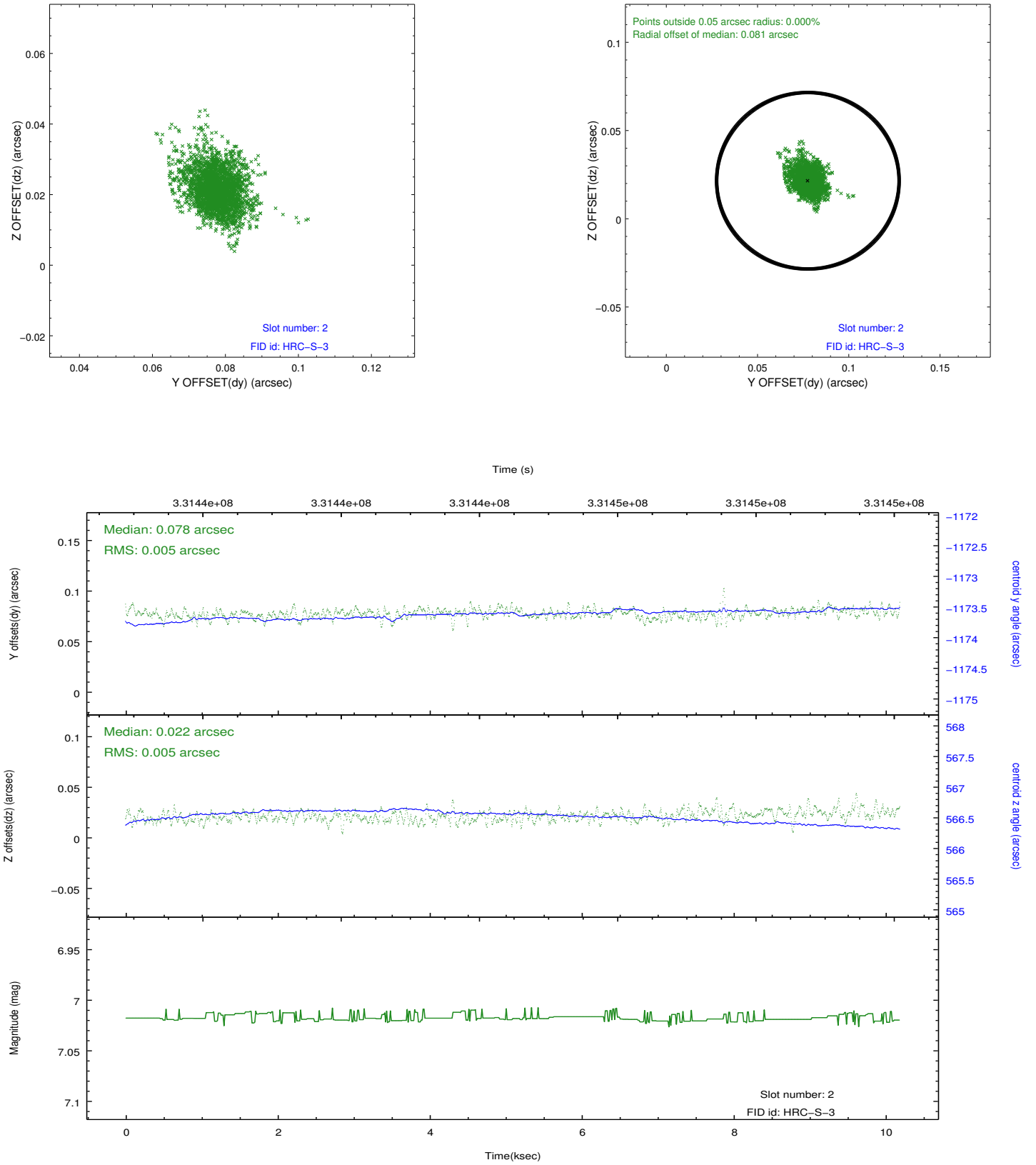
2.5.1 Slot 0



2.5.2 Slot 1

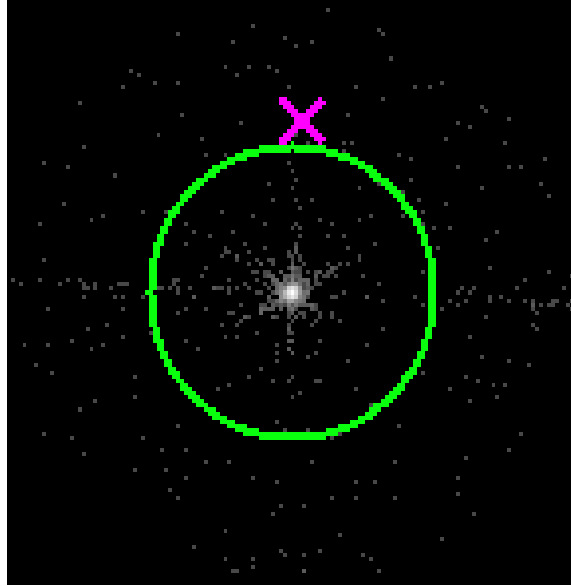


2.5.3 Slot 2

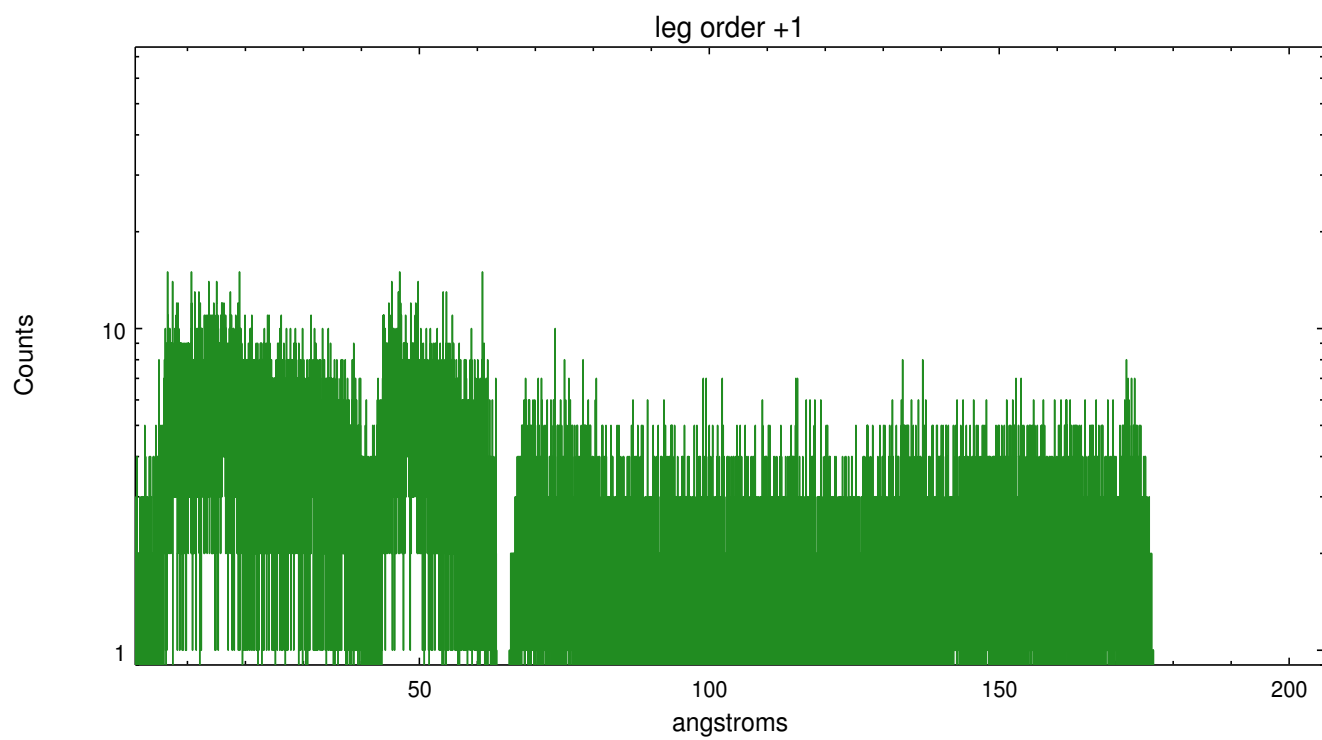
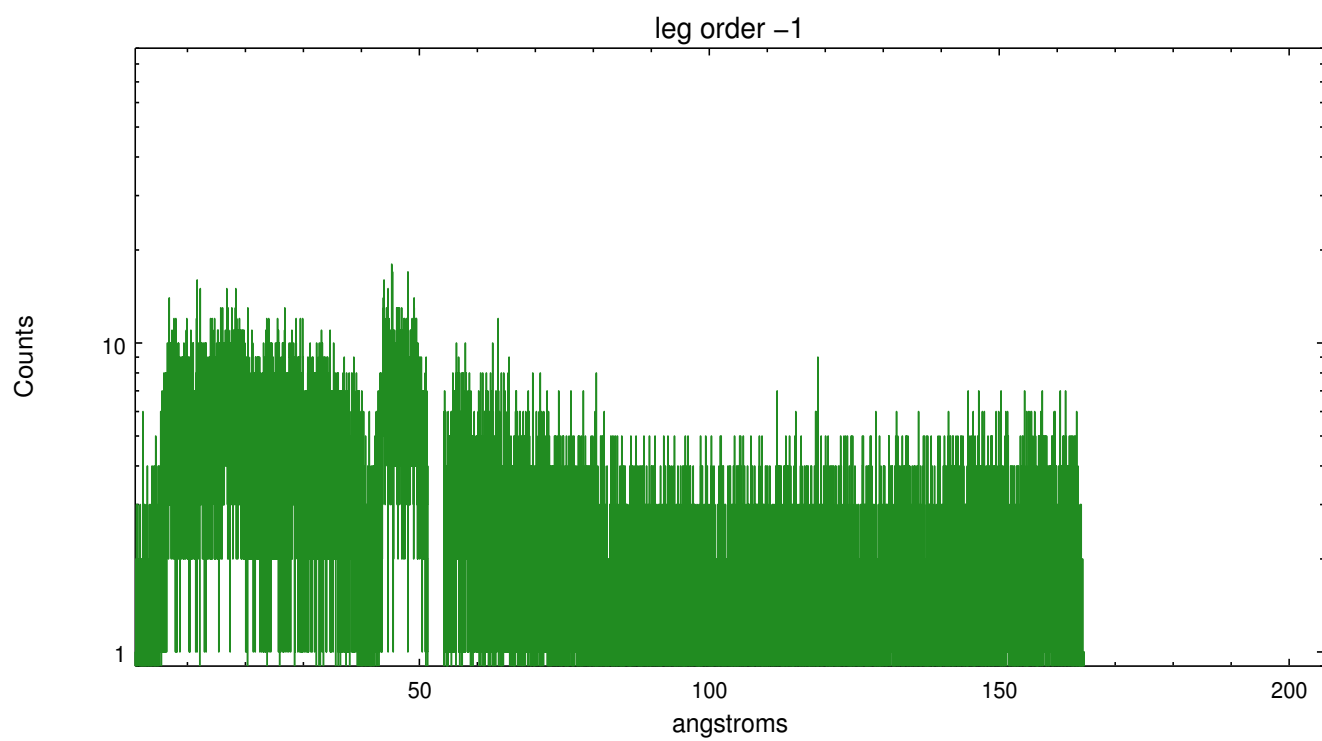


3 Gratings

3.1 LETG Arm



LETG Zero Order



A Summary

A.1 Status

V&V Scientist	Joy Nichols
V&V Date (YYYY-MM-DD)	2012.08.20
V&V Edition	1
V&V Disposition and Status	OK
V&V Charge Time	10.1885005

A.2 Comments