

V&V Reference Report

L2 ASCDS Version : 8.4.4

Observation 9691 - L2 Version 2
Chandra X-Ray Center

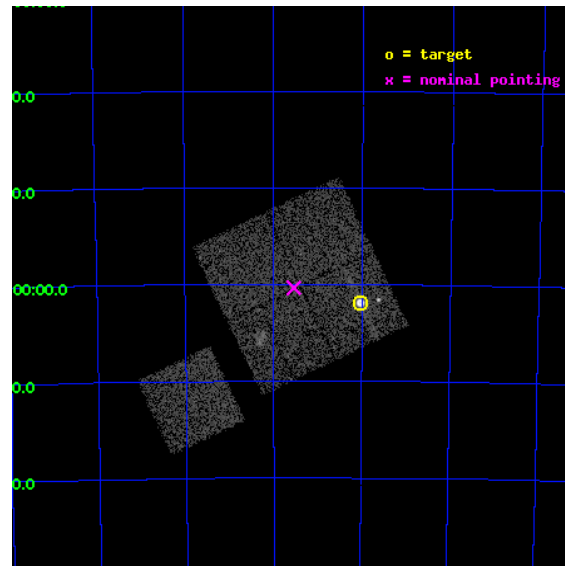
L2 Processing Date : May 9 2012

Contents

1	Front	2
2	OBI	3
2.1	OBI	3
2.1.1	Images	3
2.1.2	Bias	3
2.1.3	Parameters	4
2.1.4	Events	4
2.2	Compared Parameters	5
2.3	Aspect	6
2.4	Star Slots	9
2.4.1	Slot 3	9
2.4.2	Slot 4	10
2.4.3	Slot 5	11
2.4.4	Slot 6	12
2.4.5	Slot 7	13
2.5	FID Slots	14
2.5.1	Slot 0	14
2.5.2	Slot 1	15
2.5.3	Slot 2	16
A	Summary	17
A.1	Status	17
A.2	Comments	17

1 Front

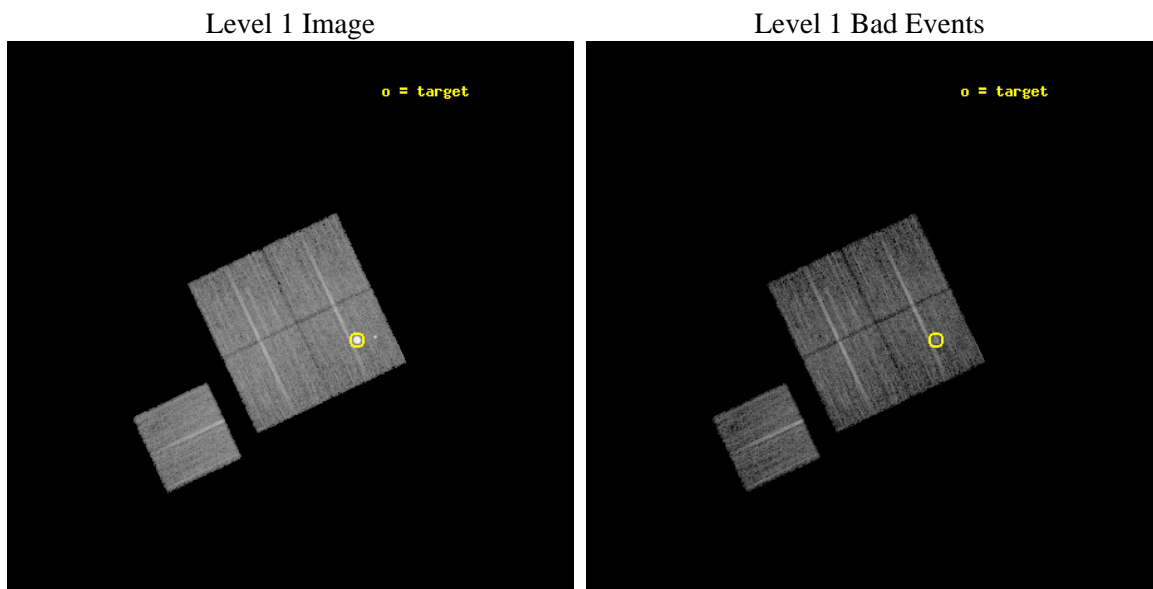
seq_num	590469	Sequence number
obs_id	9691	Observation id
title	AO9 Calibration Observations of E0102-72	Proposal title
observer	Dr. CXC Calibration	Principal investigator
object	E0102-72 I0,-120,4.7,-5.68,0	Source name
dtcycle	0	
cycle	P	events from which exps? Prim/Second/Both
ra_targ	16.01	Observer's specified target RA [deg]
dec_targ	-72.032028	Observer's specified target Dec [deg]
ra_nom	16.385036053379	Nominal RA [deg]
dec_nom	-72.005648551242	Nominal Dec [deg]
roll_nom	244.73324426762	Nominal Roll [deg]
revision	2	Processing version of data
ontime	8044.5000618696	Sum of GTIs [s]
livetime	7939.3927462865	Livetime [s]
ontime0	8044.5000618696	Sum of GTIs [s]
ontime1	8044.5000618696	Sum of GTIs [s]
ontime2	8044.5000618696	Sum of GTIs [s]
ontime3	8044.5000618696	Sum of GTIs [s]
ontime6	8044.5000618696	Sum of GTIs [s]
l2events	46794	Number of level 2 events



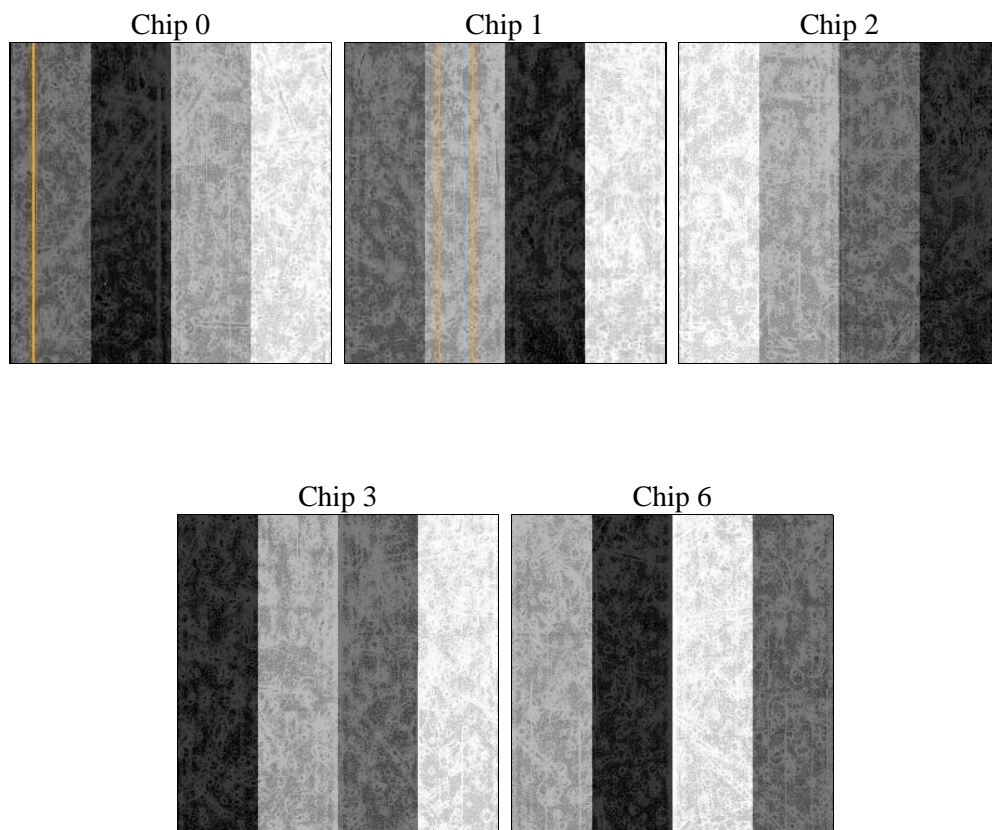
2 OBI

2.1 OBI

2.1.1 Images



2.1.2 Bias



2.1.3 Parameters

obi_num	0	Obi number	sched_exp_time	8000.000000	[s] Scheduled observation exposure time
ascdsver	8.4.4	Processing system revision	ontime	8044.5000618696	Sum of GTIs [s]
caldsver	4.4.9	 	ontime0	8044.5000618696	Sum of GTIs [s]
date	2012-05-09T03:01:47	Date and time of file creation	ontime1	8044.5000618696	Sum of GTIs [s]
revision	2	Processing version of data	ontime2	8044.5000618696	Sum of GTIs [s]
			ontime3	8044.5000618696	Sum of GTIs [s]
			ontime6	8044.5000618696	Sum of GTIs [s]
			l1events	320558	Number of level 1 events

2.1.4 Events

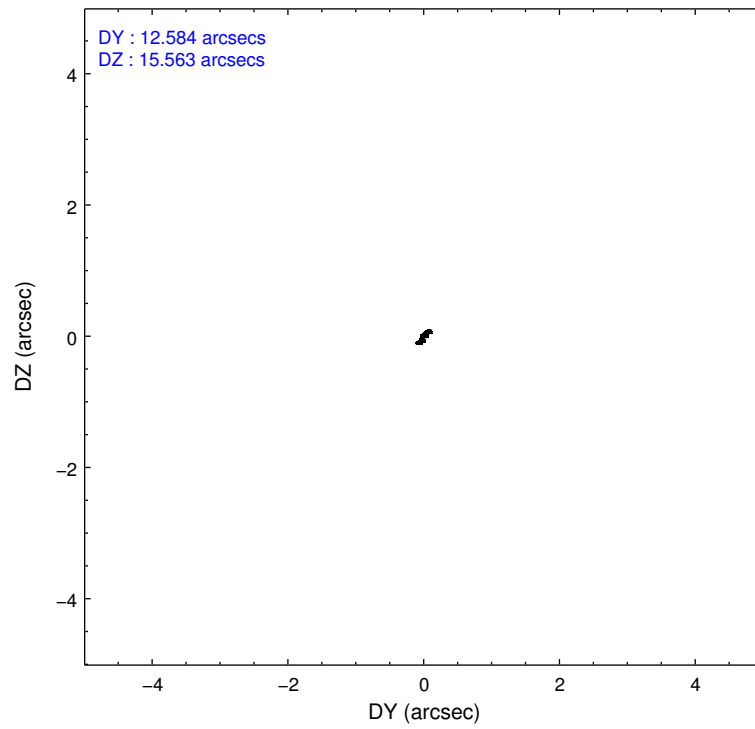
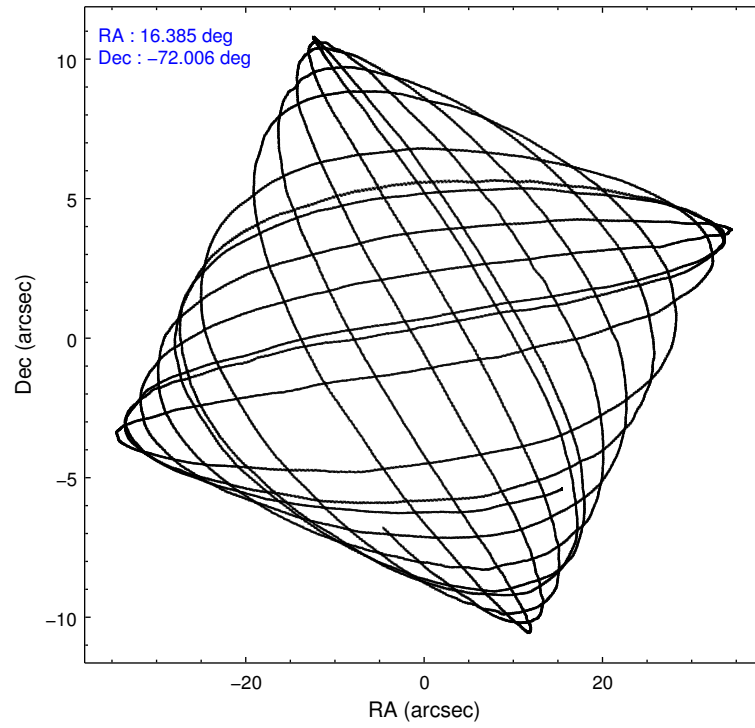
	ccd 0	ccd 1	ccd 2	ccd 3	ccd 6
level 1 events	79447	56081	63096	60394	61540
rejected events	51530	49974	56815	54674	55356
rejected %	64%	89%	90%	90%	89%

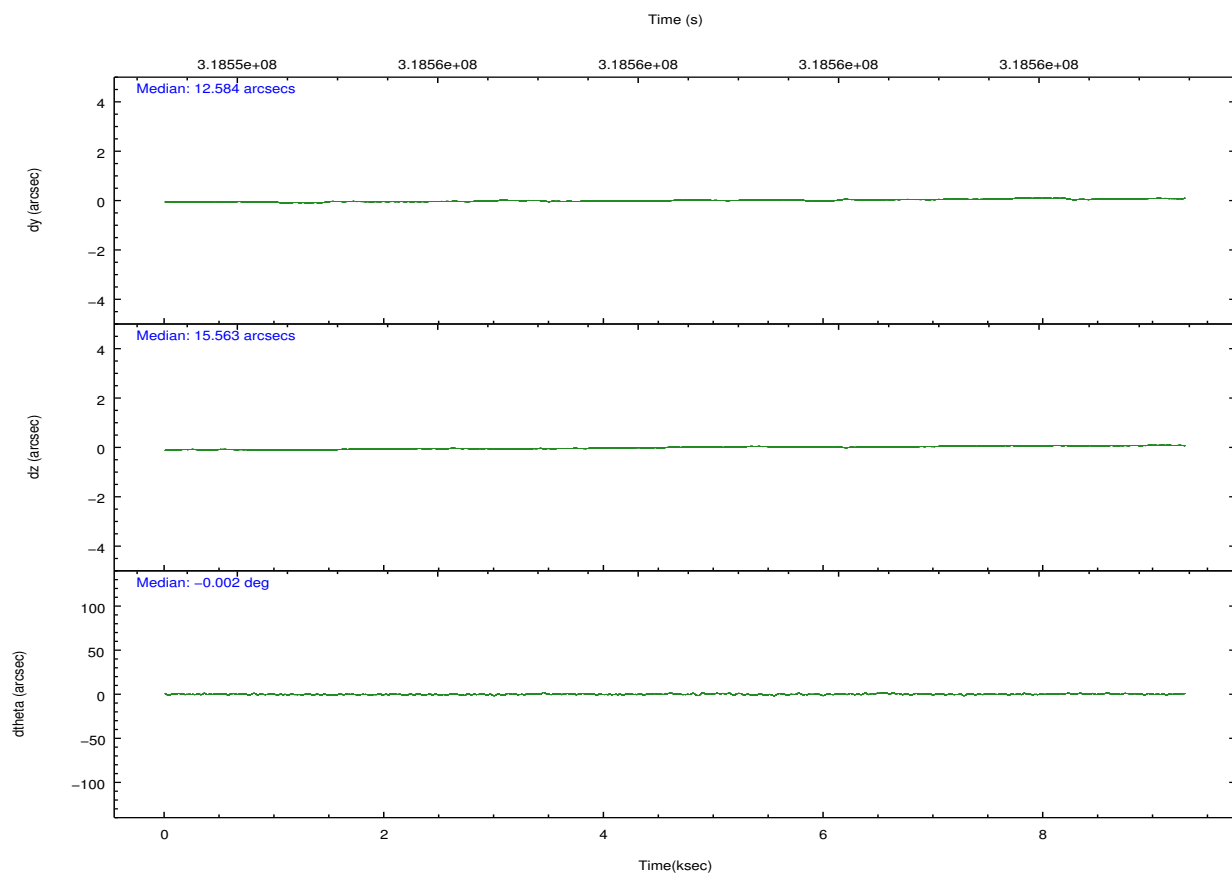
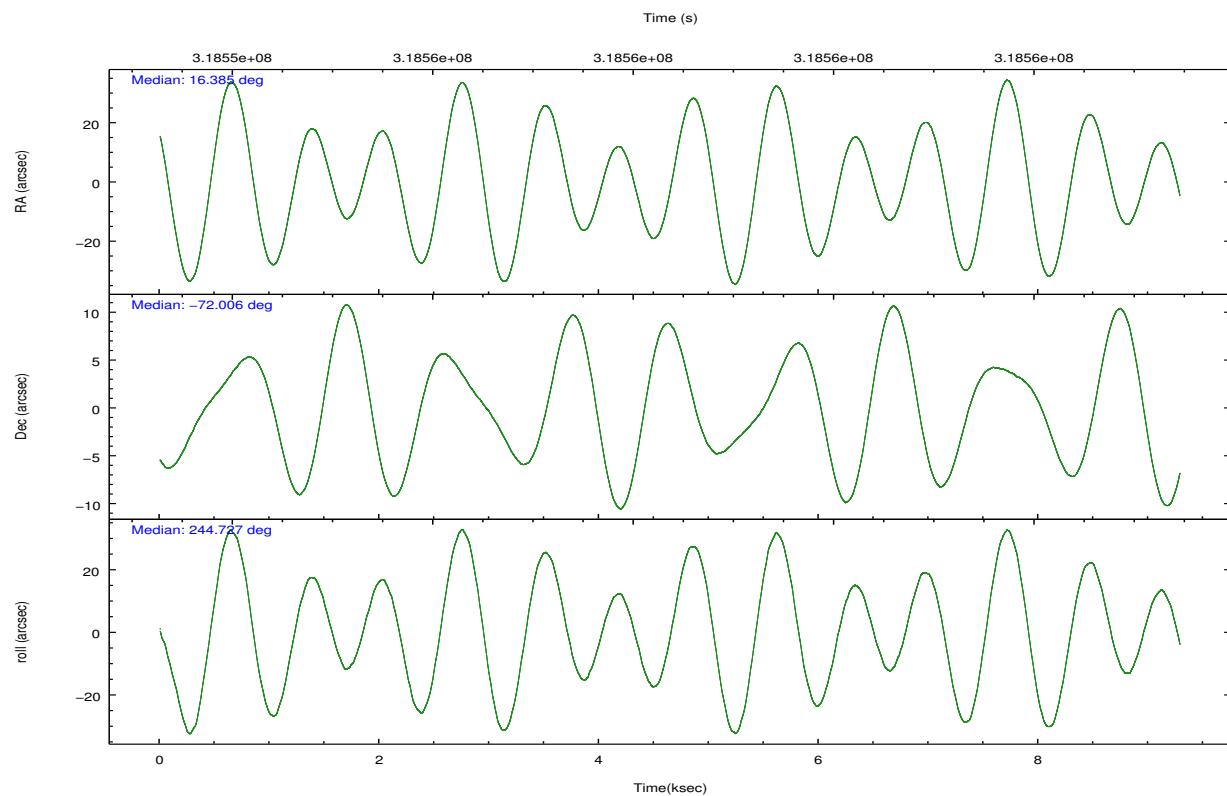
	ccd 0	ccd 1	ccd 2	ccd 3	ccd 6
grade 0 events	21429	2145	2664	2091	2267
	26%	3%	4%	3%	3%
grade 1 events	189	37	34	45	38
	0%	0%	0%	0%	0%
grade 2 events	3082	1332	1363	1282	1365
	3%	2%	2%	2%	2%
grade 3 events	1125	661	619	576	635
	1%	1%	0%	0%	1%
grade 4 events	1033	688	632	638	704
	1%	1%	1%	1%	1%
grade 5 events	1892	2025	1663	2184	1989
	2%	3%	2%	3%	3%
grade 6 events	1260	1285	1006	1133	1223
	1%	2%	1%	1%	1%
grade 7 events	49437	47908	55115	52445	53319
	62%	85%	87%	86%	86%

2.2 Compared Parameters

Parameter	Planned	Actual	Parameter	Planned	Actual
Instrument	ACIS	ACIS	Obspar format version number	7	7
Detector	ACIS-01236	ACIS-01236	Obspar file type	PREDICTED	ACTUAL
Grating	NONE	NONE	Obspar update status	NONE	UPDATED
Data mode	VFAINT	VFAINT	CCD I0 on	Y	Y
Observation mode	POINTING	POINTING	CCD I1 on	Y	Y
[deg] Pointing RA	16.377409	16.3850360533786	CCD I2 on	Y	Y
[deg] Pointing Dec	-71.978188	-72.00564855124217	CCD I3 on	Y	Y
[deg] Pointing Roll	244.517308	244.733244267616	CCD S0 on	N	N
[s] Window start time (MET)	312854465.184000	312854465.184000	CCD S1 on	N	N
[s] Window stop time (MET)	325900865.184000	325900865.184000	CCD S2 on	O1	Y
[mm] SIM focus pos	-0.782348	-0.7809083437167272	CCD S3 on	N	N
[mm] SIM defocus	0	0.001439871863259334	CCD S4 on	N	N
[mm] SIM translation stage pos	-233.592463	-233.5874344608287	CCD S5 on	N	N
[mm] SIM translation stage offset	0	-0.005018542100998502	Number of optional ACIS chips dropped	0	0
[s] Observation start time (MET)	318555024.184000	318553541.37429	On-chip summing requested	N	N
Observation start date	2008-02-04T23:29:19	2008-02-04T23:05:41	Subarray requested	NONE	NONE
[s] Observation end time (MET)	318563024.184000	318563157.92475	Alternating exposures requested	N	N
Observation end date	2008-02-05T01:42:39	2008-02-05T01:45:57	[s] Primary exposure time	0.000000	3.1
Read mode	TIMED	TIMED			

2.3 Aspect



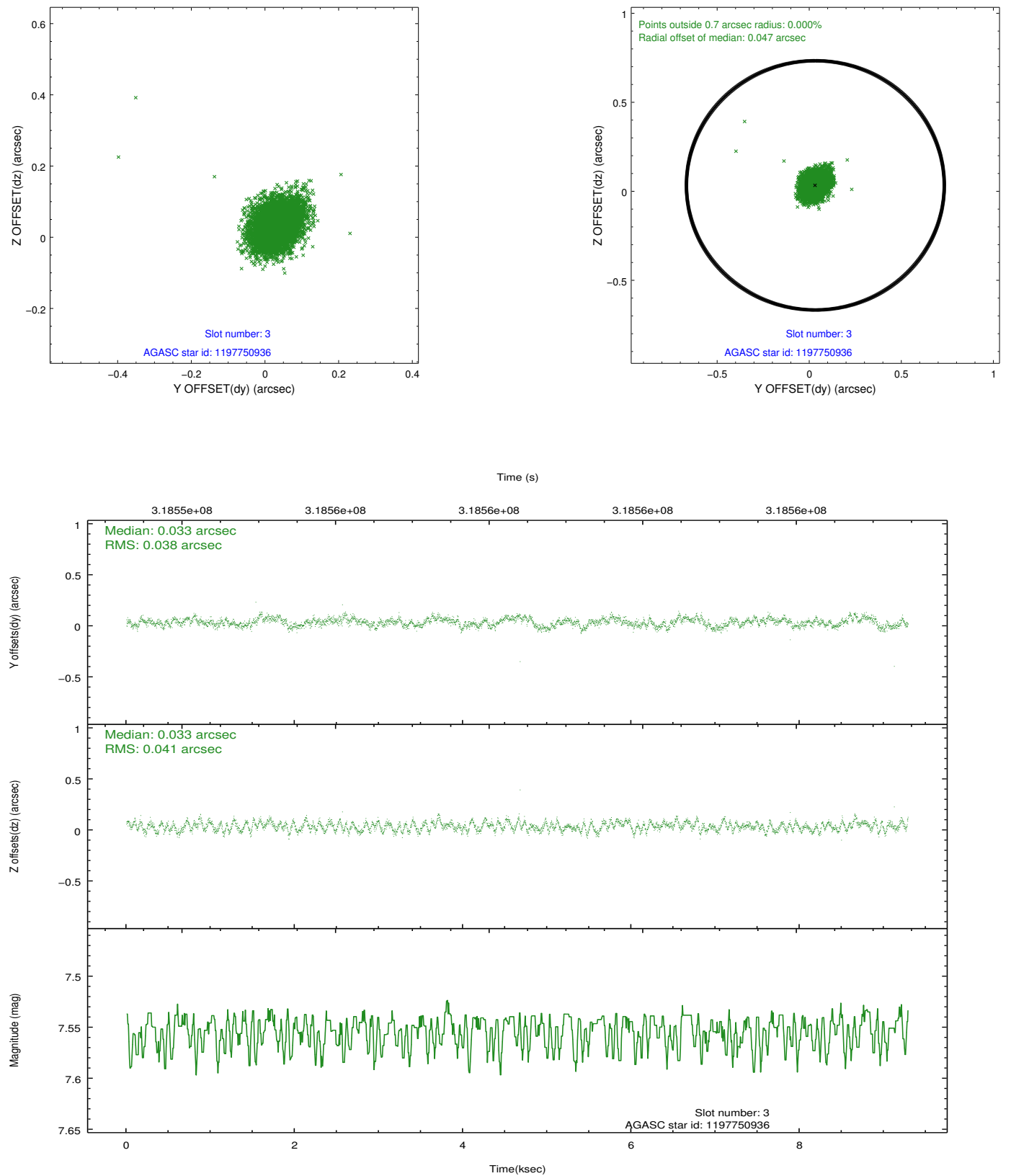


Slot Statistics

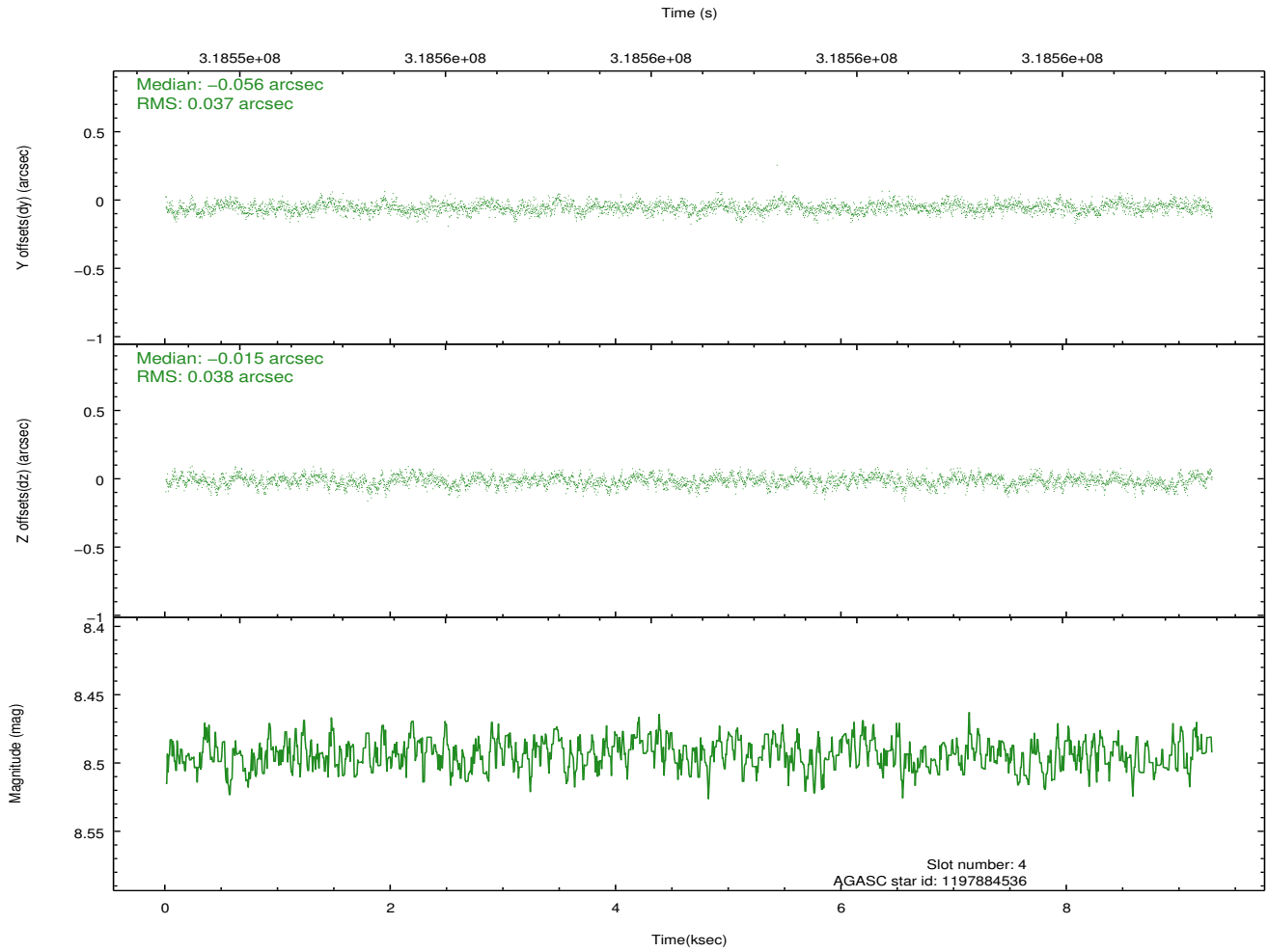
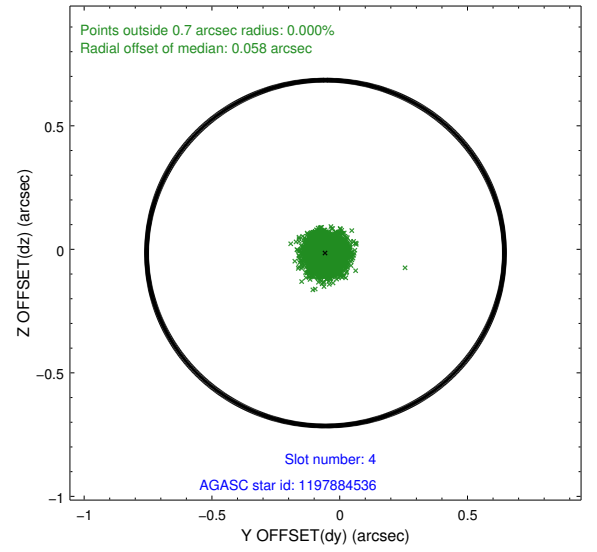
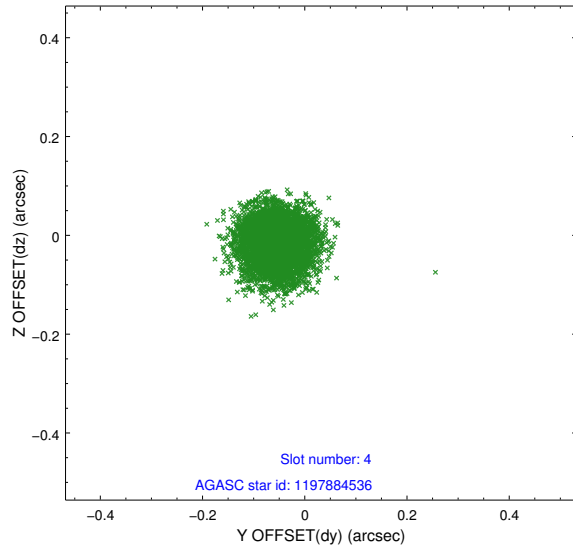
slot	status	id	mag	n_pts	med_dy	med_dz	dr1	dr2	ra	dec	mean_y	mean_z
0	FID	ACIS-I-1	7.00	2265	-0.029	-0.011	0.009	0.016	0.000000	0.000000	926.91	-839.18
1	FID	ACIS-I-4	6.93	2265	0.116	0.045	0.008	0.013	0.000000	0.000000	2147.43	1060.38
2	FID	ACIS-I-5	6.97	2265	-0.185	0.037	0.007	0.012	0.000000	0.000000	-1820.49	1058.91
3	GUIDE	1197750936	7.55	4529	0.033	0.033	0.059	0.093	15.387940	-71.549550	-899.07	-1677.35
4	GUIDE	1197884536	8.49	4528	-0.056	-0.015	0.058	0.092	17.160729	-71.835289	-837.69	574.27
5	GUIDE	1197884712	8.29	4530	0.134	-0.156	0.064	0.105	16.087398	-72.252690	1029.72	138.41
6	GUIDE	1197885328	7.23	4531	0.027	0.165	0.052	0.086	16.283090	-71.733943	-748.20	-473.59
7	GUIDE	1198283128	7.85	4530	-0.139	-0.027	0.053	0.083	17.272580	-72.642428	1751.06	1899.93

2.4 Star Slots

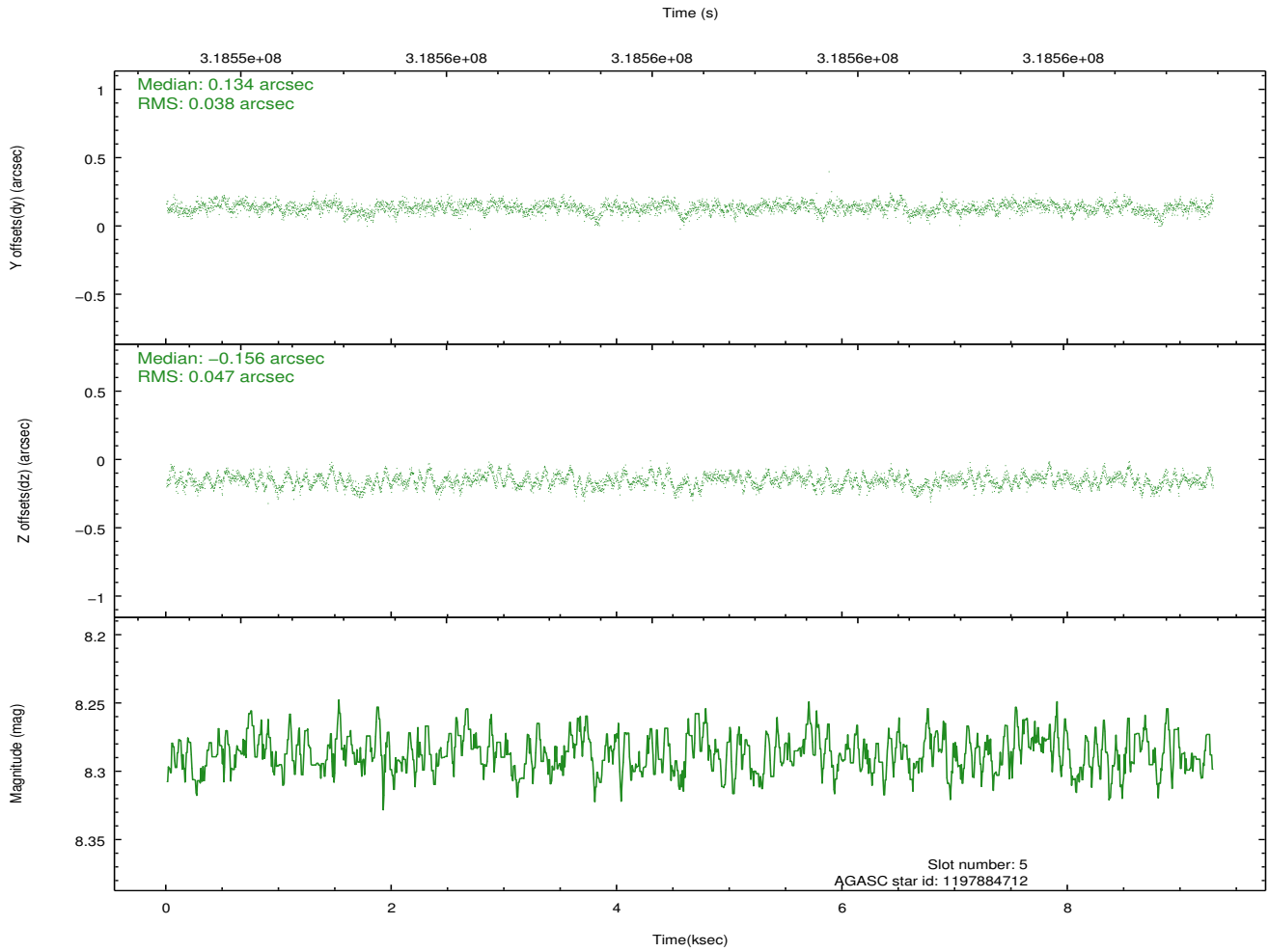
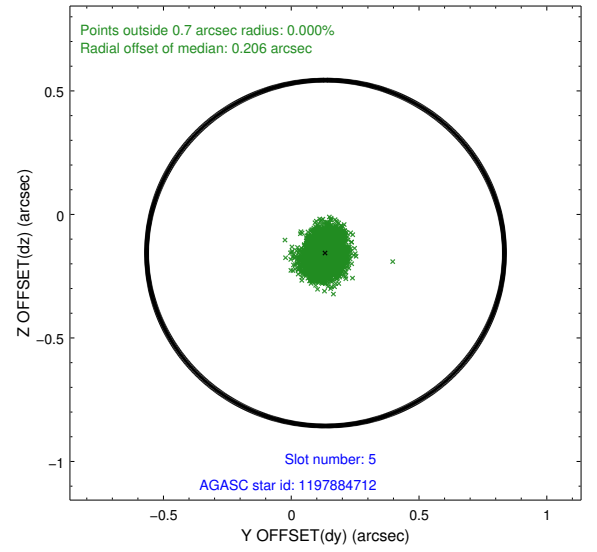
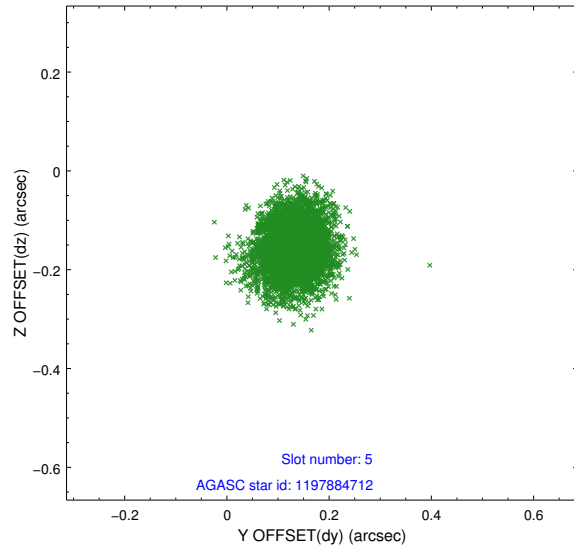
2.4.1 Slot 3



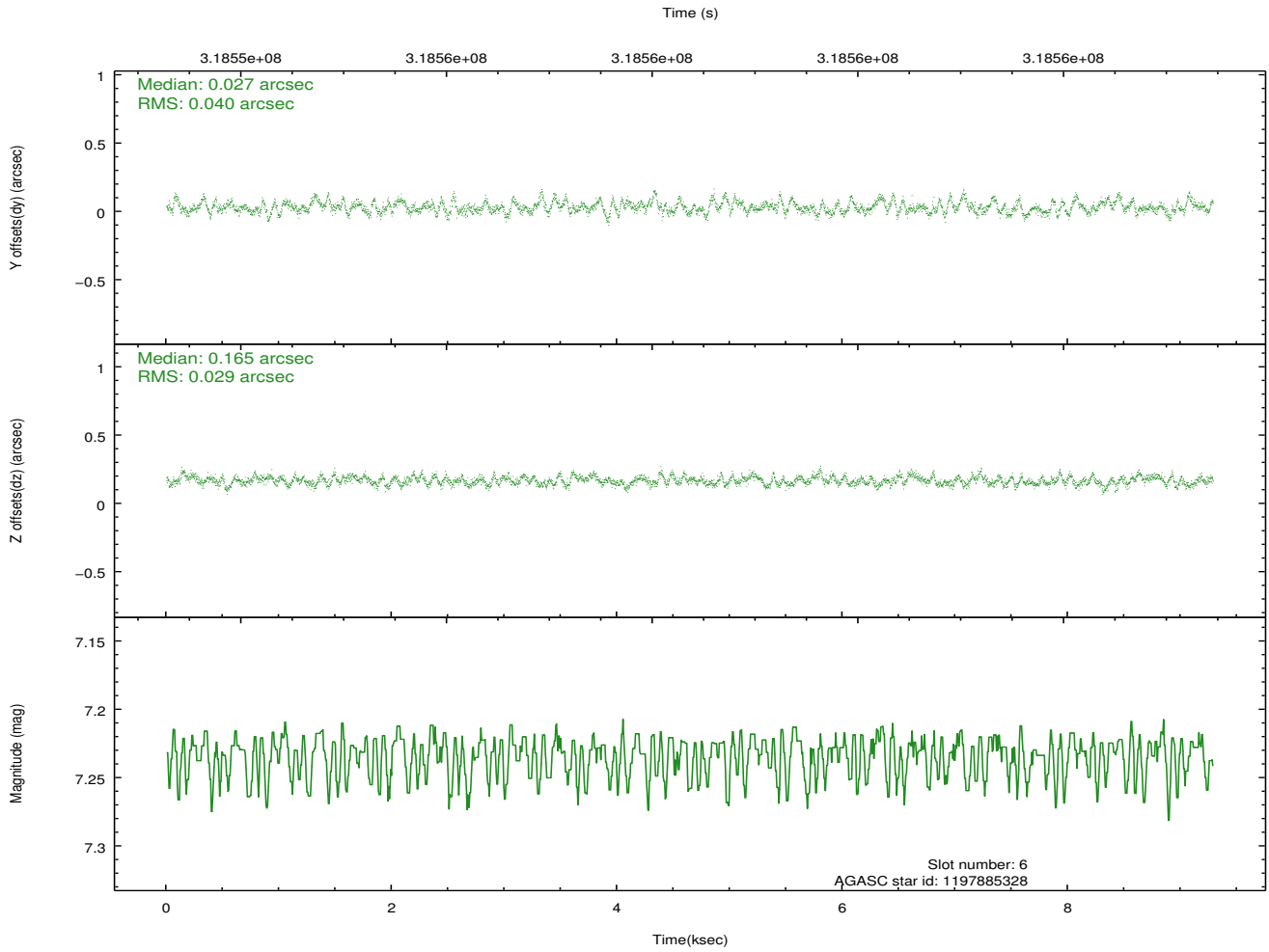
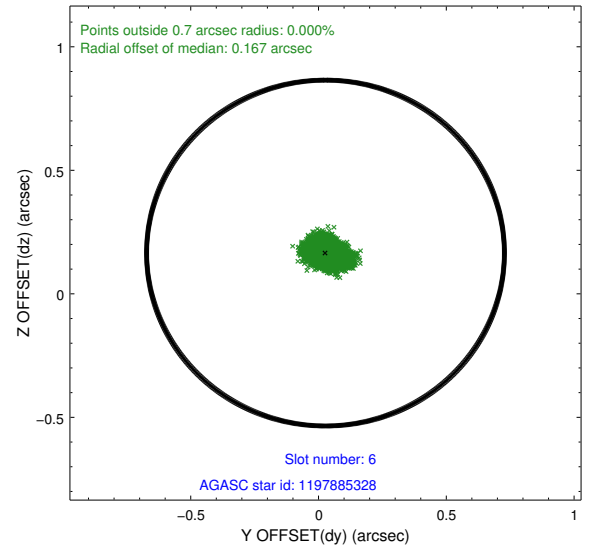
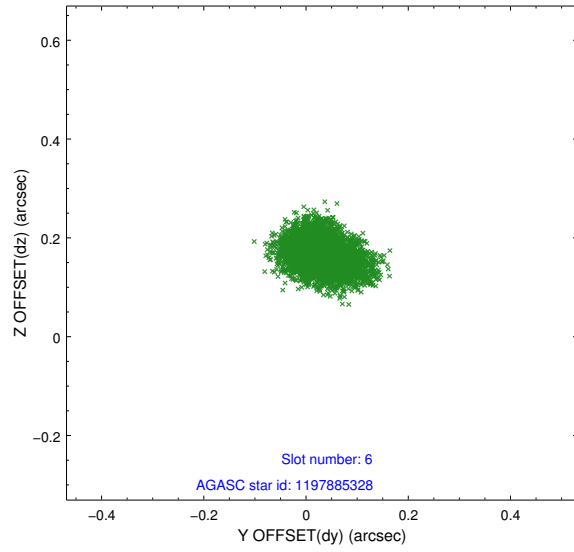
2.4.2 Slot 4



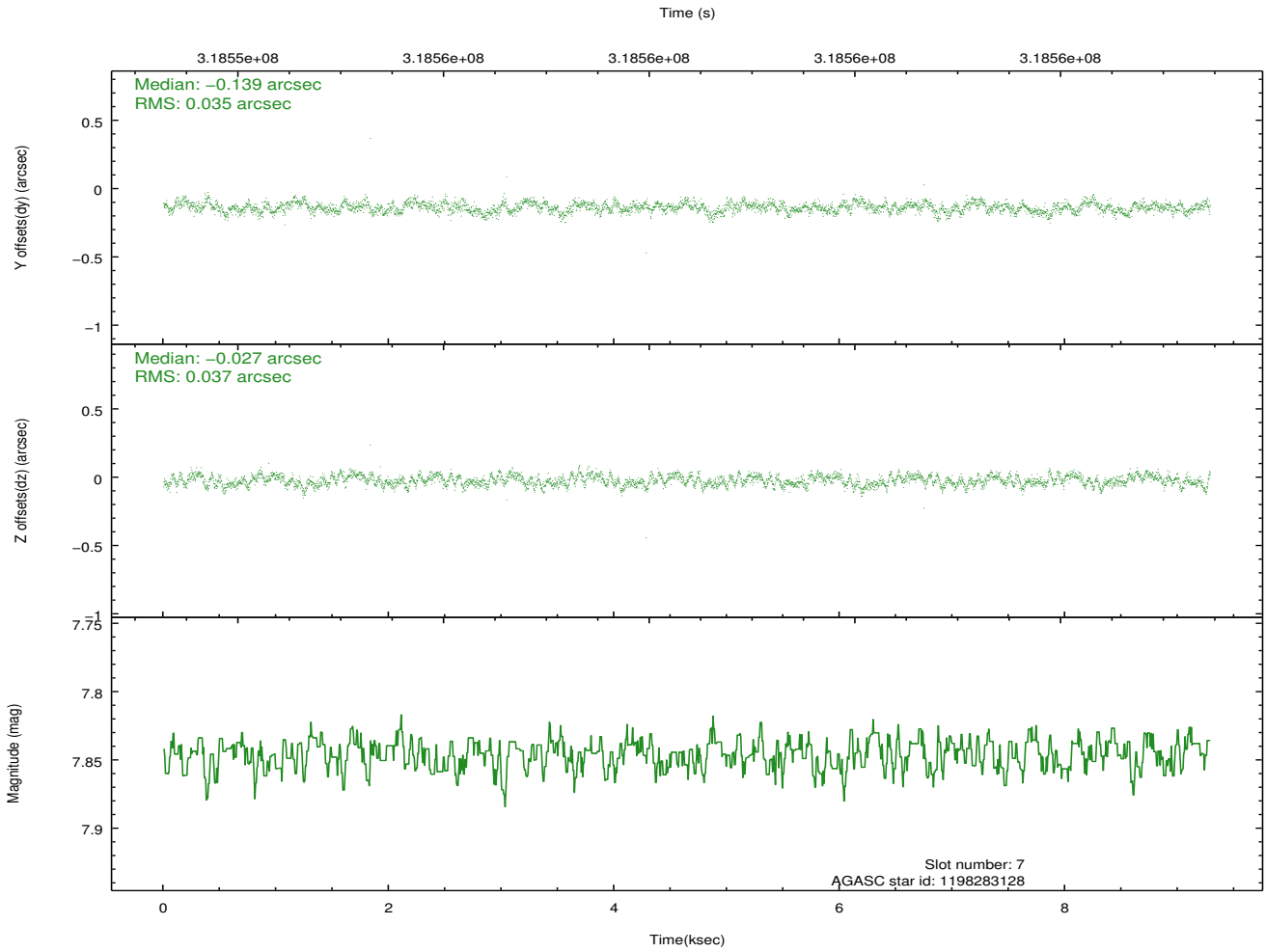
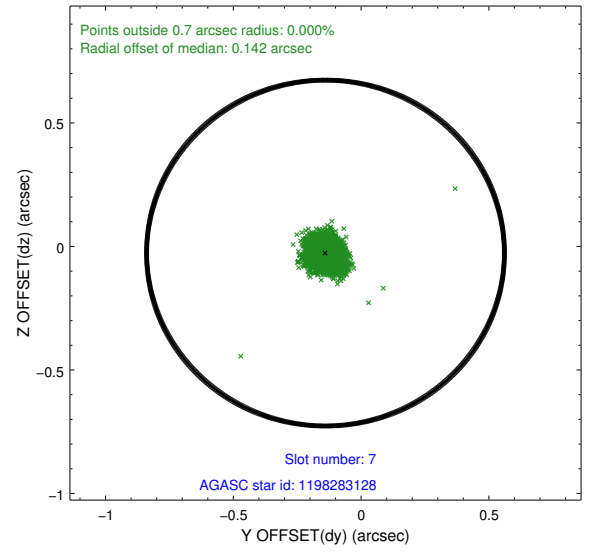
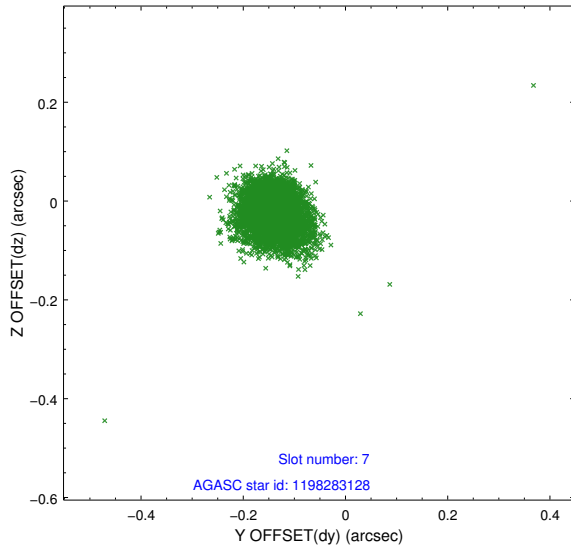
2.4.3 Slot 5



2.4.4 Slot 6

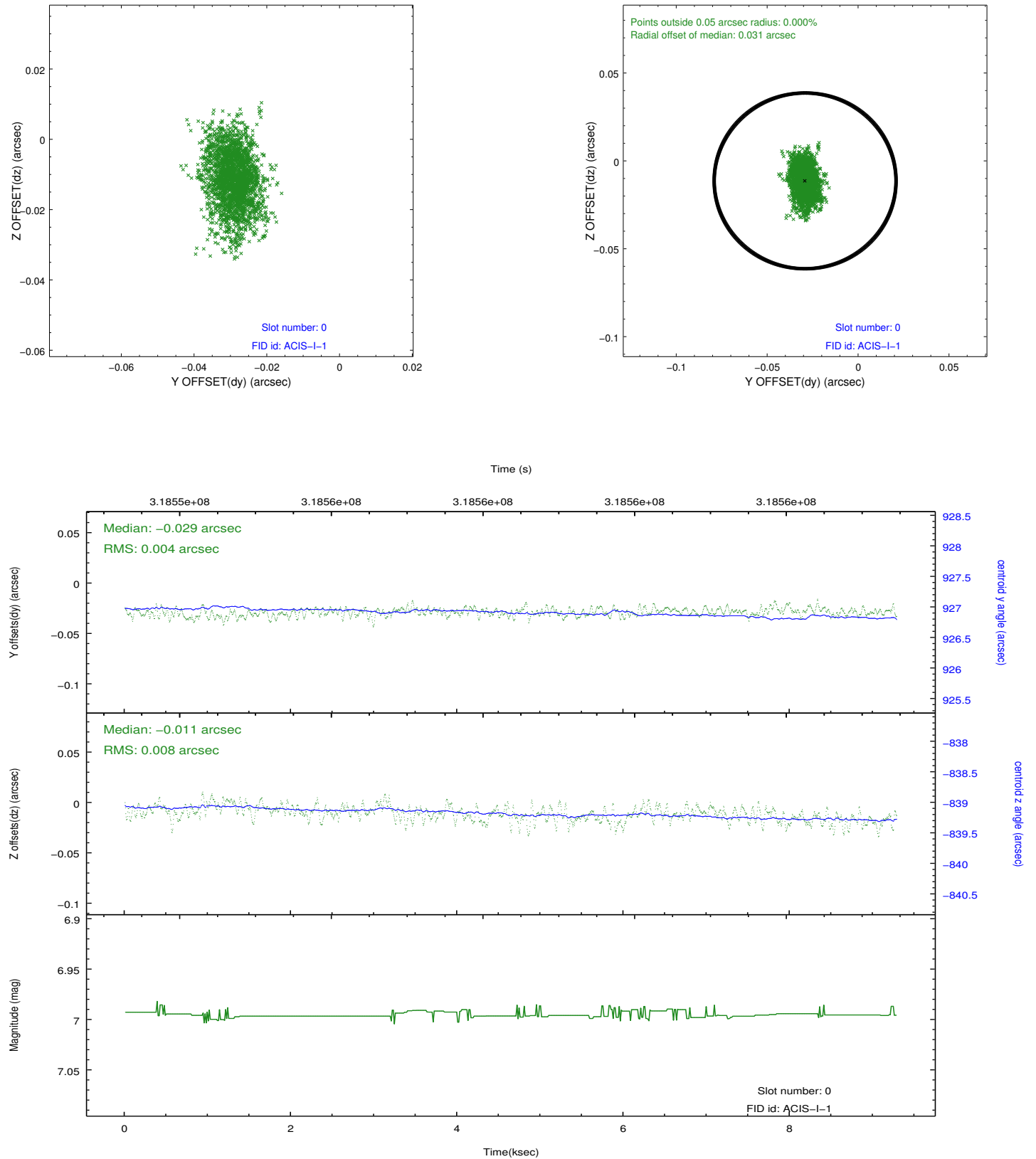


2.4.5 Slot 7

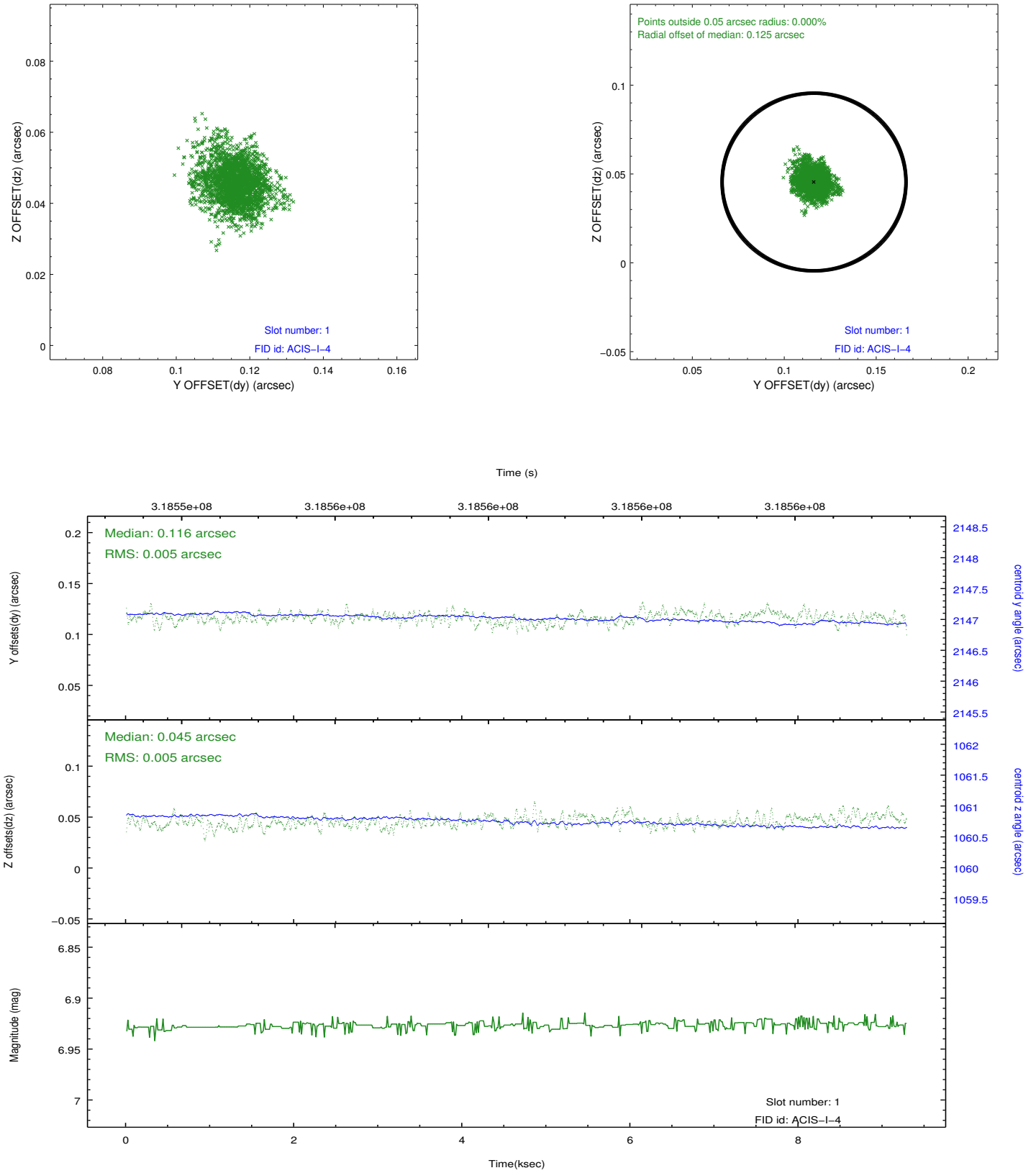


2.5 FID Slots

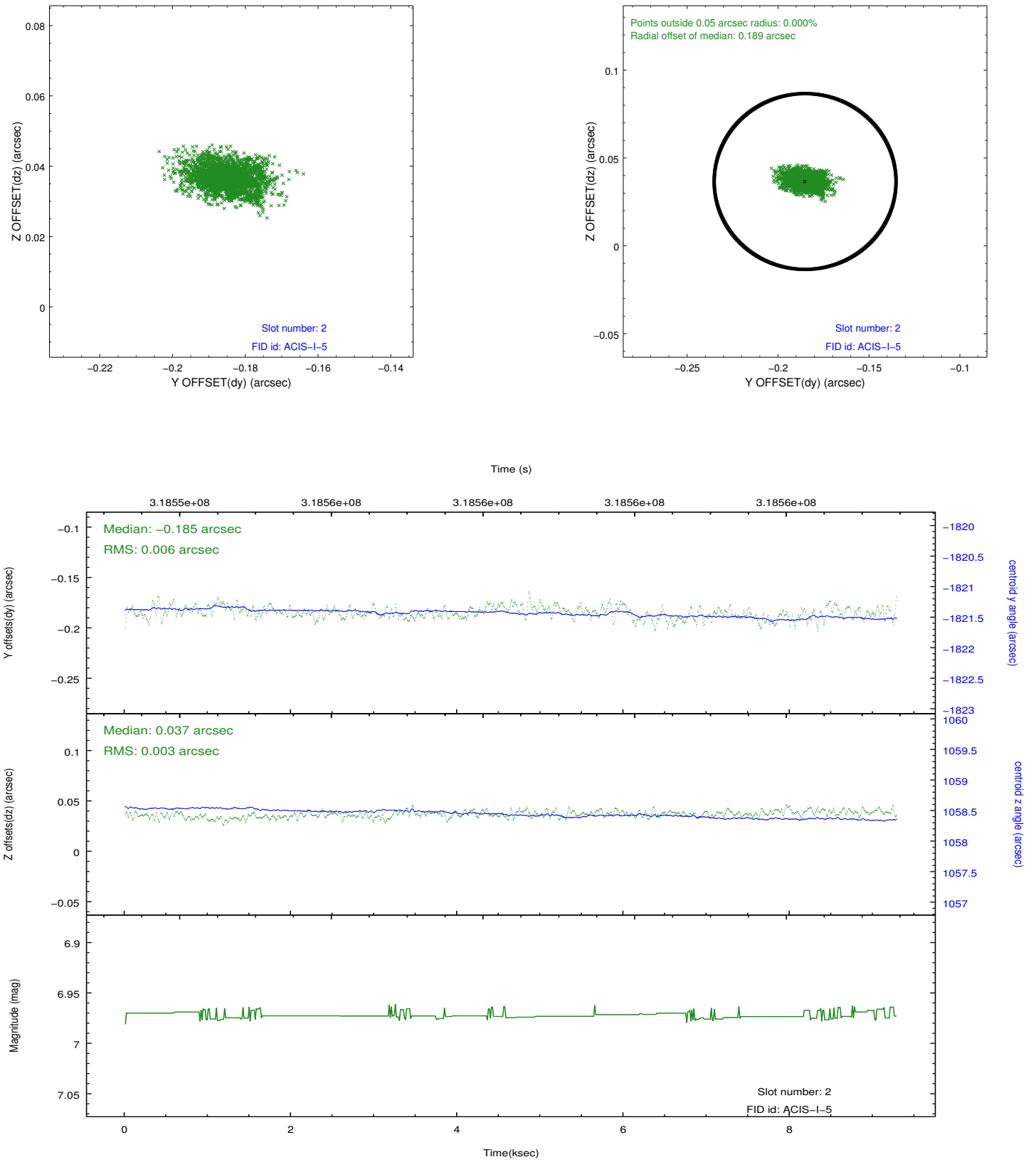
2.5.1 Slot 0



2.5.2 Slot 1



2.5.3 Slot 2



A Summary

A.1 Status

V&V Scientist	Beth Sundheim
V&V Date (YYYY-MM-DD)	2012.05.10
V&V Edition	1
V&V Disposition and Status	OK
V&V Charge Time	8.04450006

A.2 Comments

Window preference met.