

# V&V Reference Report

## L2 ASCDS Version : 8.4.5

Observation 941 - L2 Version 3  
Chandra X-Ray Center

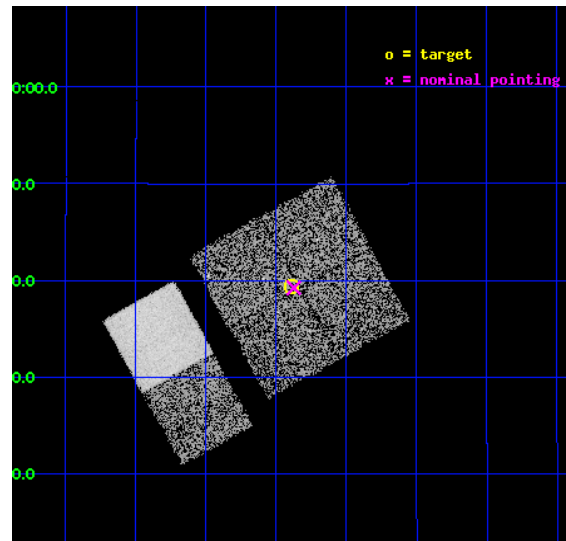
L2 Processing Date : Sep 1 2012

## Contents

<b>1</b>	<b>Front</b>	<b>2</b>
<b>2</b>	<b>OBI</b>	<b>3</b>
2.1	OBI . . . . .	3
2.1.1	Images . . . . .	3
2.1.2	Bias . . . . .	3
2.1.3	Parameters . . . . .	4
2.1.4	Events . . . . .	4
2.2	Compared Parameters . . . . .	5
2.3	Aspect . . . . .	6
2.4	Star Slots . . . . .	9
2.4.1	Slot 3 . . . . .	9
2.4.2	Slot 4 . . . . .	10
2.4.3	Slot 5 . . . . .	11
2.4.4	Slot 6 . . . . .	12
2.4.5	Slot 7 . . . . .	13
2.5	FID Slots . . . . .	14
2.5.1	Slot 0 . . . . .	14
2.5.2	Slot 1 . . . . .	15
2.5.3	Slot 2 . . . . .	16
<b>A</b>	<b>Summary</b>	<b>17</b>
A.1	Status . . . . .	17
A.2	Comments . . . . .	17

# 1 Front

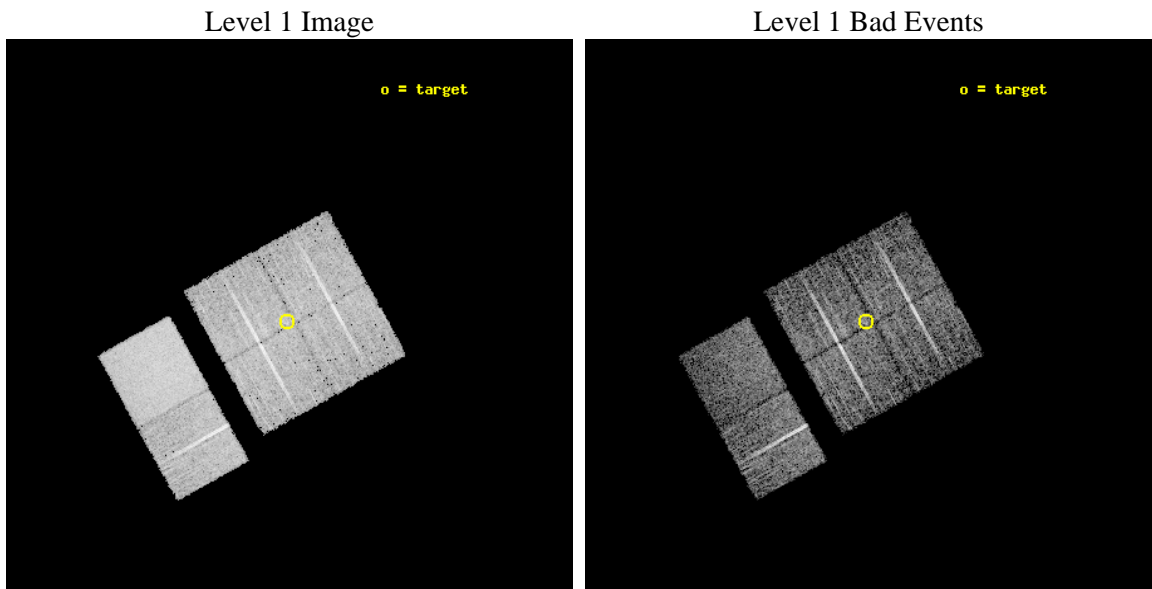
seq_num	900013	Sequence number
obs_id	941	Observation id
title	AXAF OBSERVATION OF FAINT HARD X-RAY SOURCES DISCOVERED WITH ASCA	&#160
observer	Dr. Tadayuki Takahashi	Principal investigator
object	AX J2018+1139	Source name
dtcycle	0	&#160
cycle	P	events from which exps? Prim/Second/Both
ra_targ	304.5975	Observer's specified target RA [deg]
dec_targ	11.657111	Observer's specified target Dec [deg]
ra_nom	304.59350839705	Nominal RA [deg]
dec_nom	11.654046479411	Nominal Dec [deg]
roll_nom	241.01163970225	Nominal Roll [deg]
revision	3	Processing version of data
ontime	6627.2000061572	Sum of GTIs [s]
livetime	6543.2824092584	Livetime [s]
ontime0	6627.2000061572	Sum of GTIs [s]
ontime1	6623.9590459019	Sum of GTIs [s]
ontime2	6627.2000061572	Sum of GTIs [s]
ontime3	6627.2000061572	Sum of GTIs [s]
ontime6	6627.2000061572	Sum of GTIs [s]
ontime7	6627.2000061572	Sum of GTIs [s]
l2events	53937	Number of level 2 events



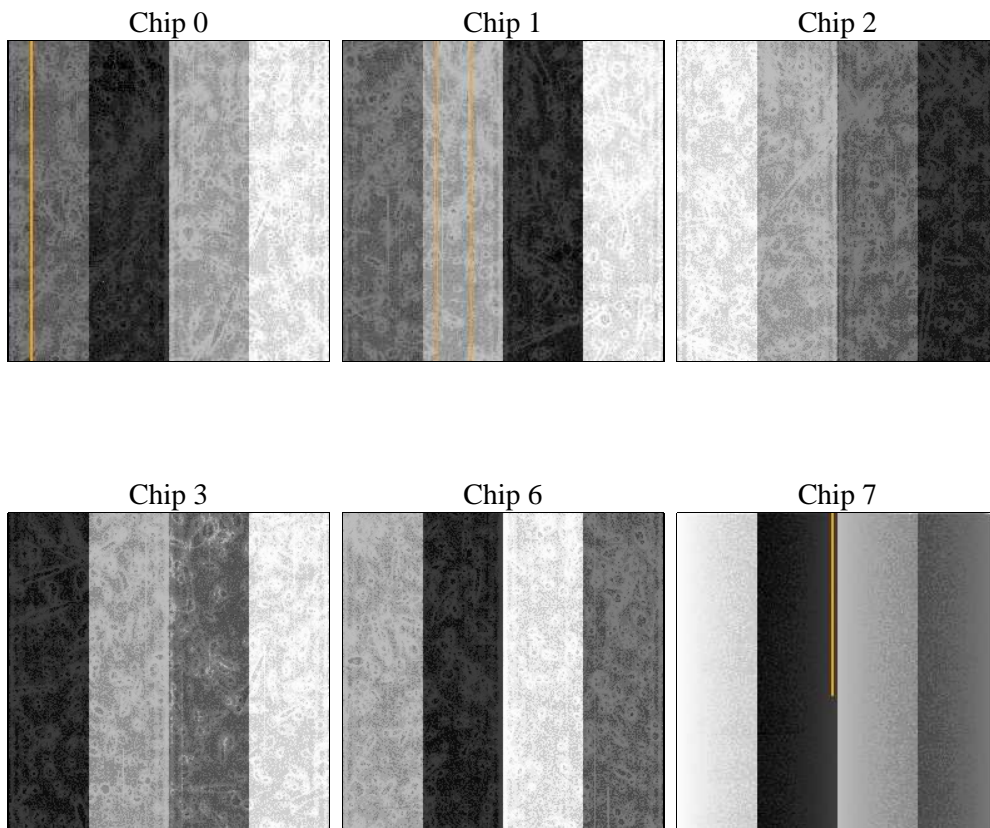
## 2 OBI

### 2.1 OBI

#### 2.1.1 Images



#### 2.1.2 Bias



### 2.1.3 Parameters

obi_num	0	Obi number	sched_exp_time	6500.000000	[s] Scheduled observation exposure time
ascdsver	8.4.5	Processing system revision	ontime	6627.2000061572	Sum of GTIs [s]
caldsver	4.5.1.1	&#160	ontime0	6627.2000061572	Sum of GTIs [s]
date	2012-09-01T03:42:33	Date and time of file creation	ontime1	6623.9590459019	Sum of GTIs [s]
revision	3	Processing version of data	ontime2	6627.2000061572	Sum of GTIs [s]
			ontime3	6627.2000061572	Sum of GTIs [s]
			ontime6	6627.2000061572	Sum of GTIs [s]
			ontime7	6627.2000061572	Sum of GTIs [s]
			l1events	268098	Number of level 1 events

### 2.1.4 Events

	ccd 0	ccd 1	ccd 2	ccd 3	ccd 6	ccd 7		ccd 0	ccd 1	ccd 2	ccd 3	ccd 6	ccd 7
level 1 events	37018	38436	42334	40504	44141	65665	grade 0 events	2171	2255	2111	2228	2289	4140
rejected events	32403	33536	37827	35878	39206	31283		5%	5%	4%	5%	5%	6%
rejected %	87%	87%	89%	88%	88%	47%	grade 1 events	18	13	13	16	30	54
								0%	0%	0%	0%	0%	0%
							grade 2 events	1003	1011	956	912	981	6877
								2%	2%	2%	2%	2%	10%
							grade 3 events	465	516	459	482	493	3099
								1%	1%	1%	1%	1%	4%
							grade 4 events	433	484	443	467	480	3104
								1%	1%	1%	1%	1%	4%
							grade 5 events	1411	1551	1441	1511	1755	5062
								3%	4%	3%	3%	3%	7%
							grade 6 events	789	889	810	798	954	18347
								2%	2%	1%	1%	2%	27%
							grade 7 events	30728	31717	36101	34090	37159	24982
								83%	82%	85%	84%	84%	38%

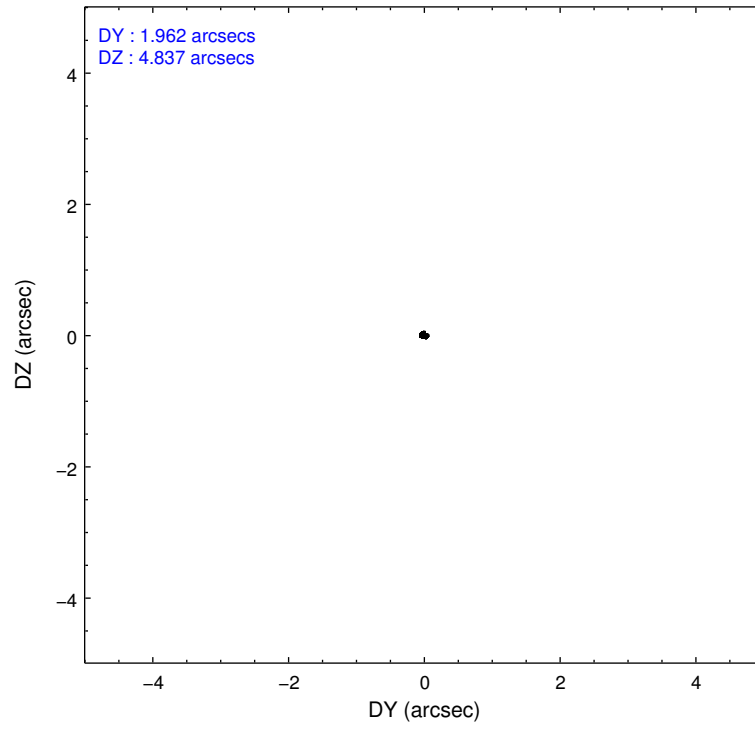
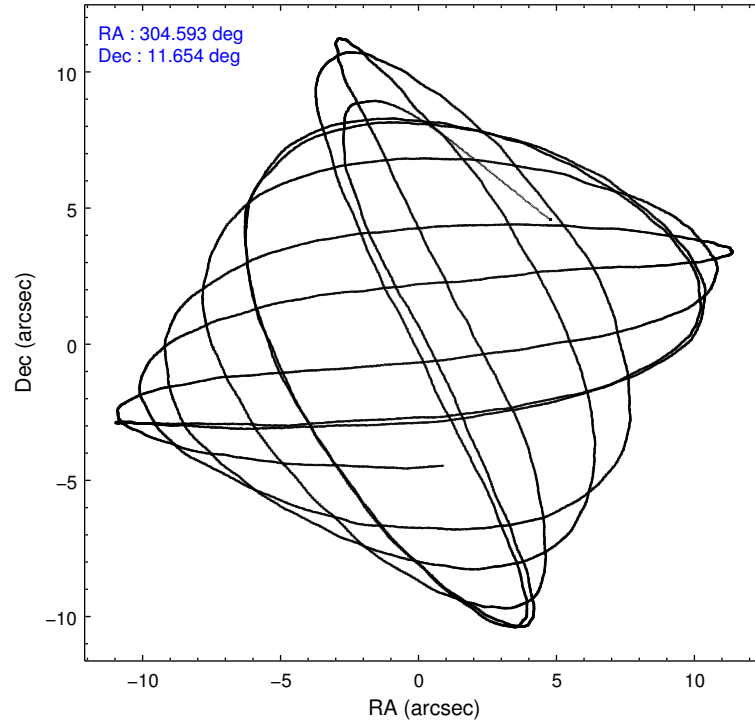


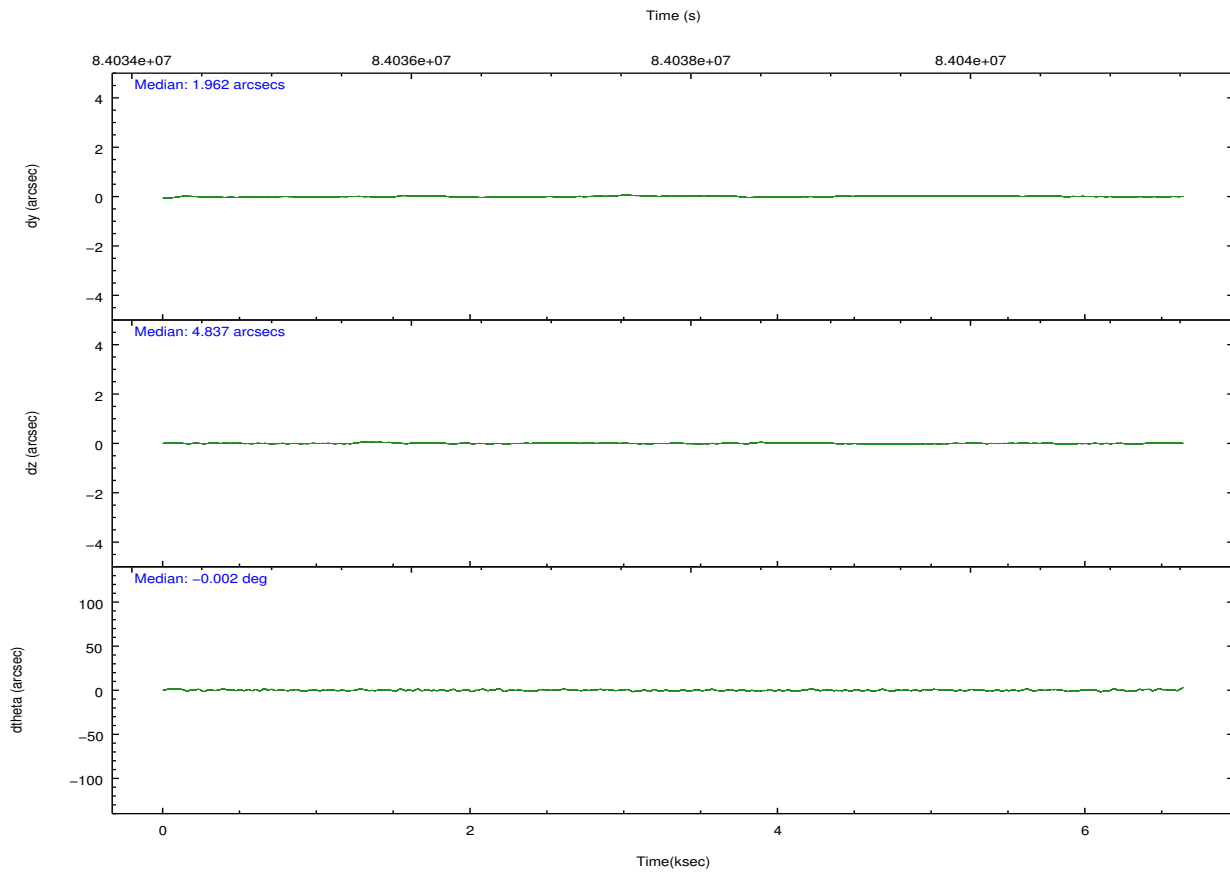
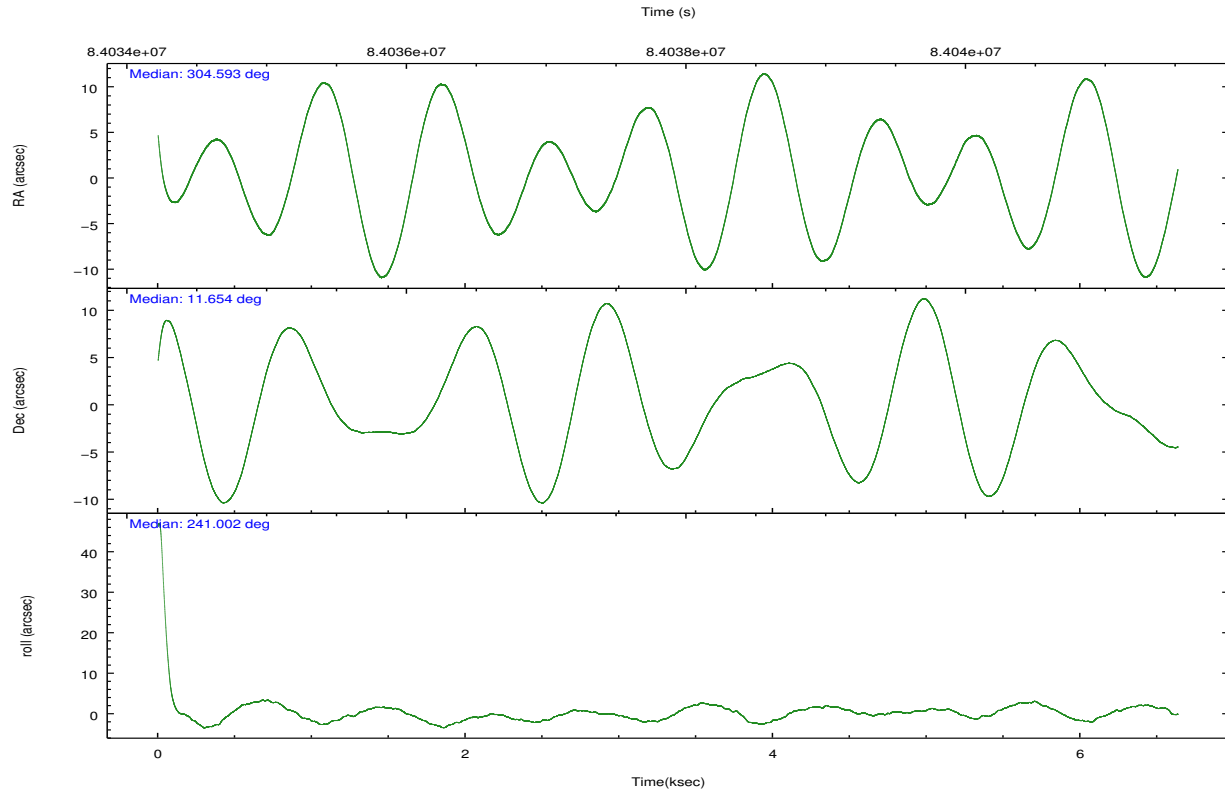
## 2.2 Compared Parameters

Parameter	Planned	Actual
Instrument	ACIS	ACIS
Detector	ACIS-012367	ACIS-012367
Grating	NONE	NONE
Data mode	VFAINT	VFAINT
Observation mode	POINTING	POINTING
[deg] Pointing RA	304.593164	304.5935083970469
[deg] Pointing Dec	11.681631	11.6540464794109
[deg] Pointing Roll	240.802915	241.0116397022489
[mm] SIM focus pos	-0.782348	-0.7809083437167272
[mm] SIM defocus	0	0.001439871863259334
[mm] SIM translation stage pos	-233.592463	-233.5874344608287
[mm] SIM translation stage offset	0	-0.005018542100998502
[s] Observation start time (MET)	84034690.184000	84033452.709582
Observation start date	2000-08-30T14:57:06	2000-08-30T14:37:32
[s] Observation end time (MET)	84041190.184000	84041972.509902
Observation end date	2000-08-30T16:45:26	2000-08-30T16:59:32
Read mode	TIMED	TIMED

Parameter	Planned	Actual
Obspar format version number	7	7
Obspar file type	PREDICTED	ACTUAL
Obspar update status	NONE	UPDATED
Number of optional ACIS chips dropped	0	0
On-chip summing requested	N	N
Subarray requested	NONE	NONE
Alternating exposures requested	N	N
[s] Primary exposure time	0.000000	3.2

## 2.3 Aspect



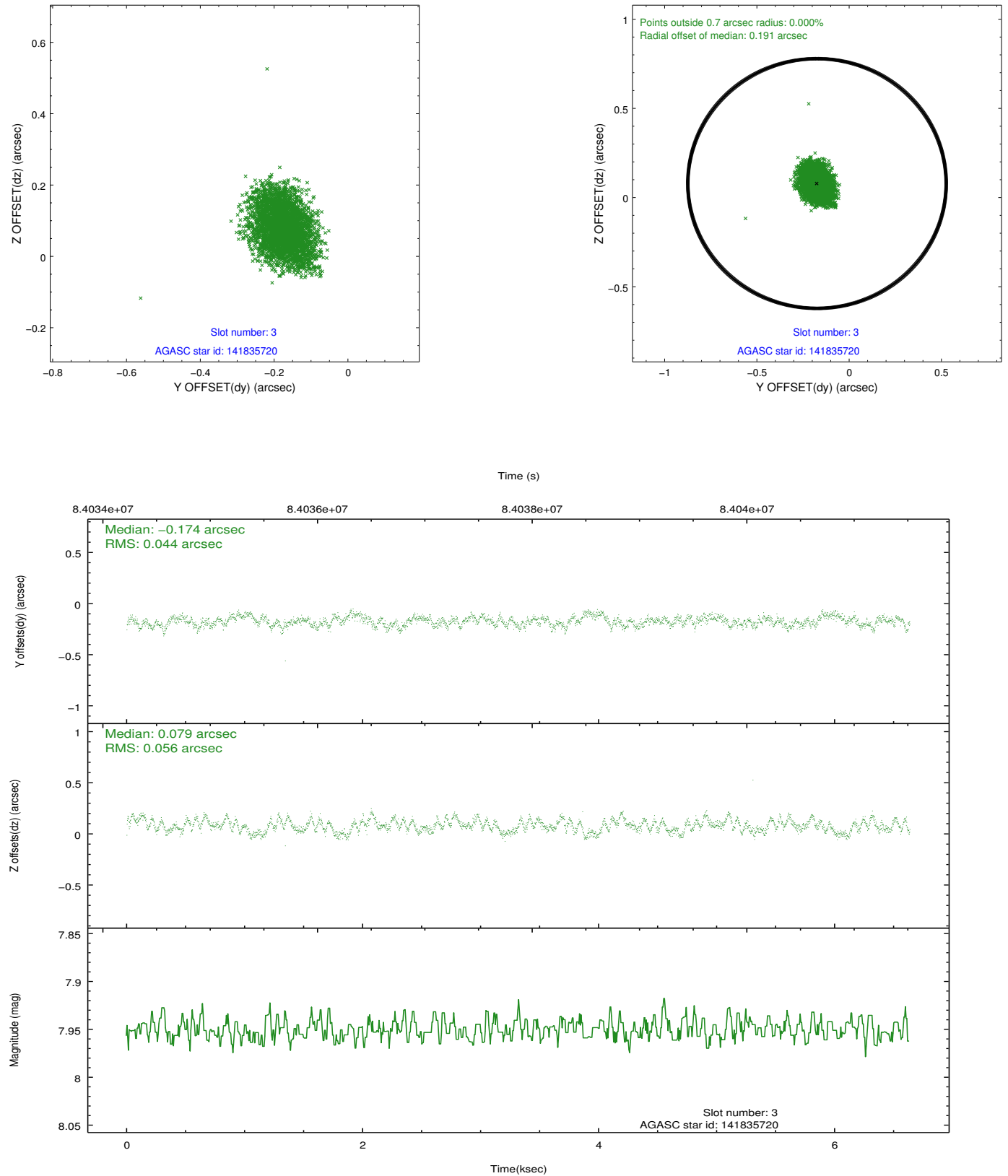


### Slot Statistics

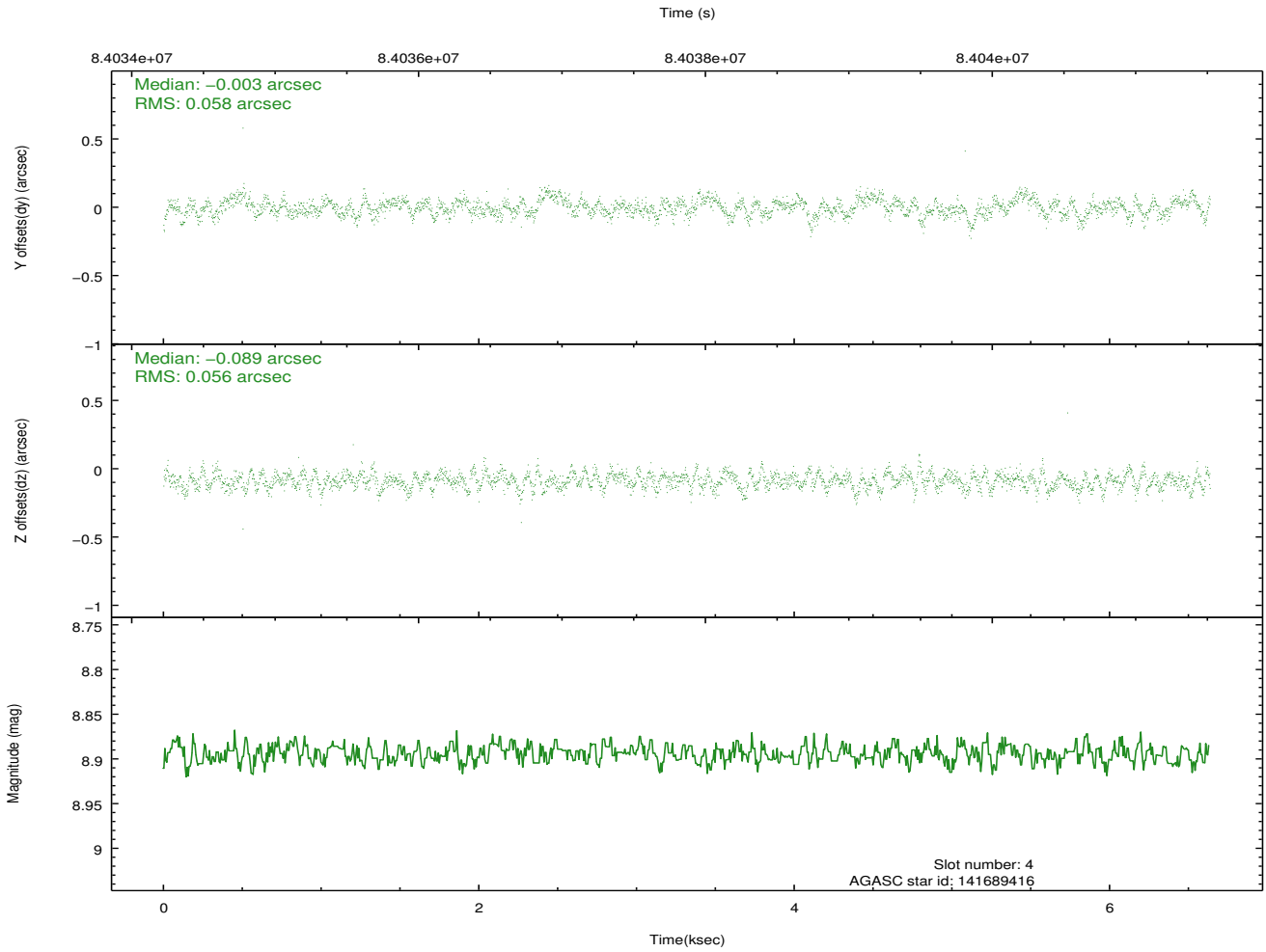
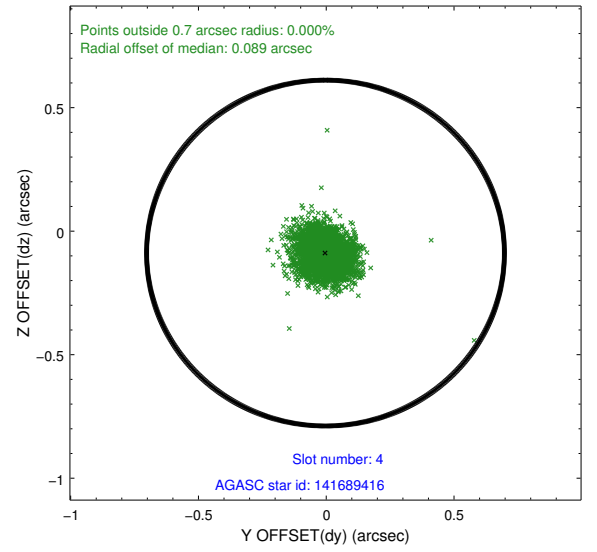
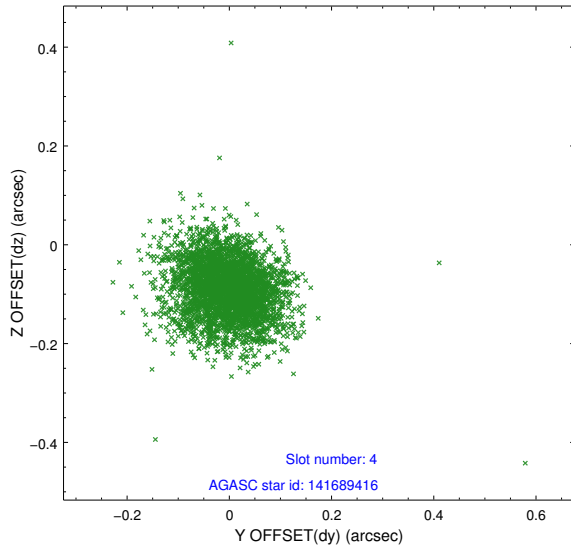
slot	status	id	mag	n_pts	med_dy	med_dz	dr1	dr2	ra	dec	mean_y	mean_z
0	FID	ACIS-I-2	7.15	1619	-0.035	-0.037	0.009	0.015	0.000000	0.000000	-756.35	-834.57
1	FID	ACIS-I-4	7.19	1619	-0.008	0.038	0.006	0.011	0.000000	0.000000	2157.34	1071.24
2	FID	ACIS-I-5	7.23	1619	-0.057	0.068	0.009	0.016	0.000000	0.000000	-1809.07	1070.11
3	GUIDE	141835720	7.95	3236	-0.174	0.079	0.076	0.121	304.766441	11.431894	486.31	973.24
4	GUIDE	141689416	8.89	3237	-0.003	-0.089	0.083	0.137	304.344893	12.217953	-1259.02	-1703.76
5	GUIDE	141689760	8.93	3236	0.017	0.080	0.067	0.108	304.320859	11.721870	341.41	-908.34
6	GUIDE	141298848	9.56	3236	0.110	-0.170	0.113	0.176	305.021454	11.151842	926.12	2250.96
7	GUIDE	141690128	9.62	3236	0.051	0.101	0.089	0.154	304.430388	11.672781	308.42	-483.87

## 2.4 Star Slots

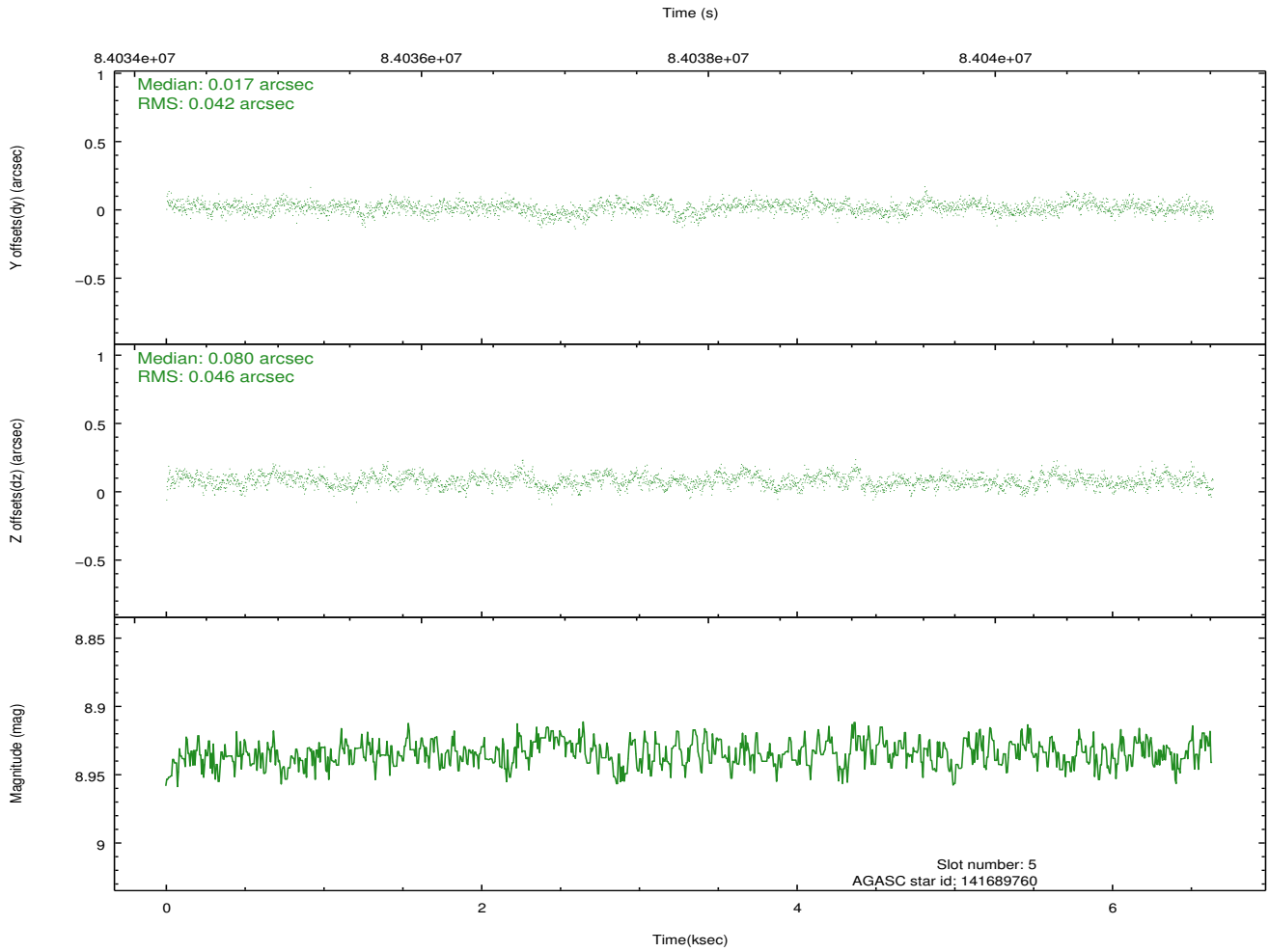
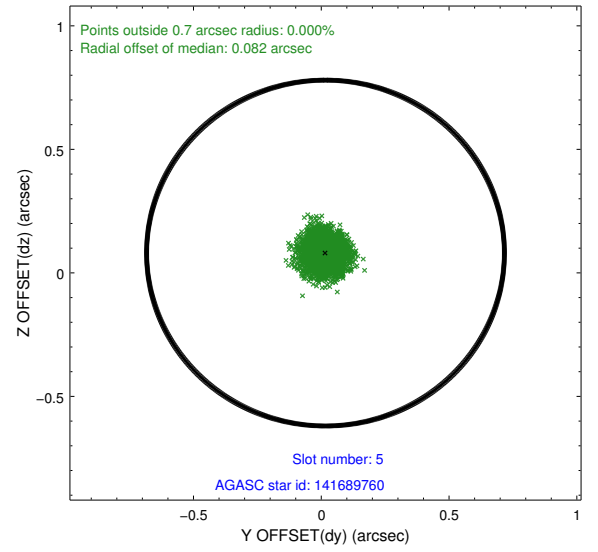
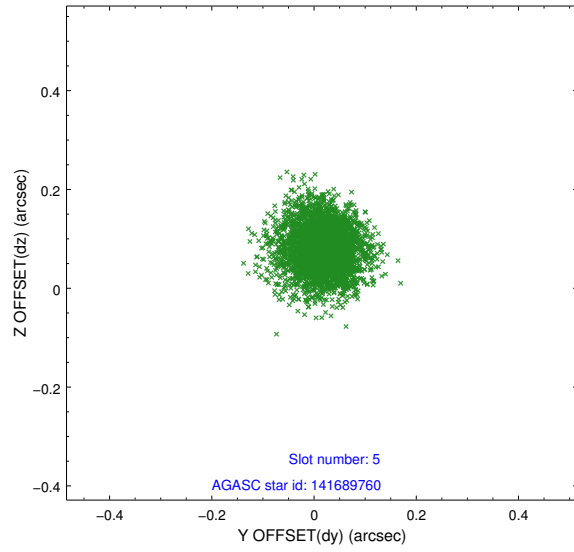
### 2.4.1 Slot 3



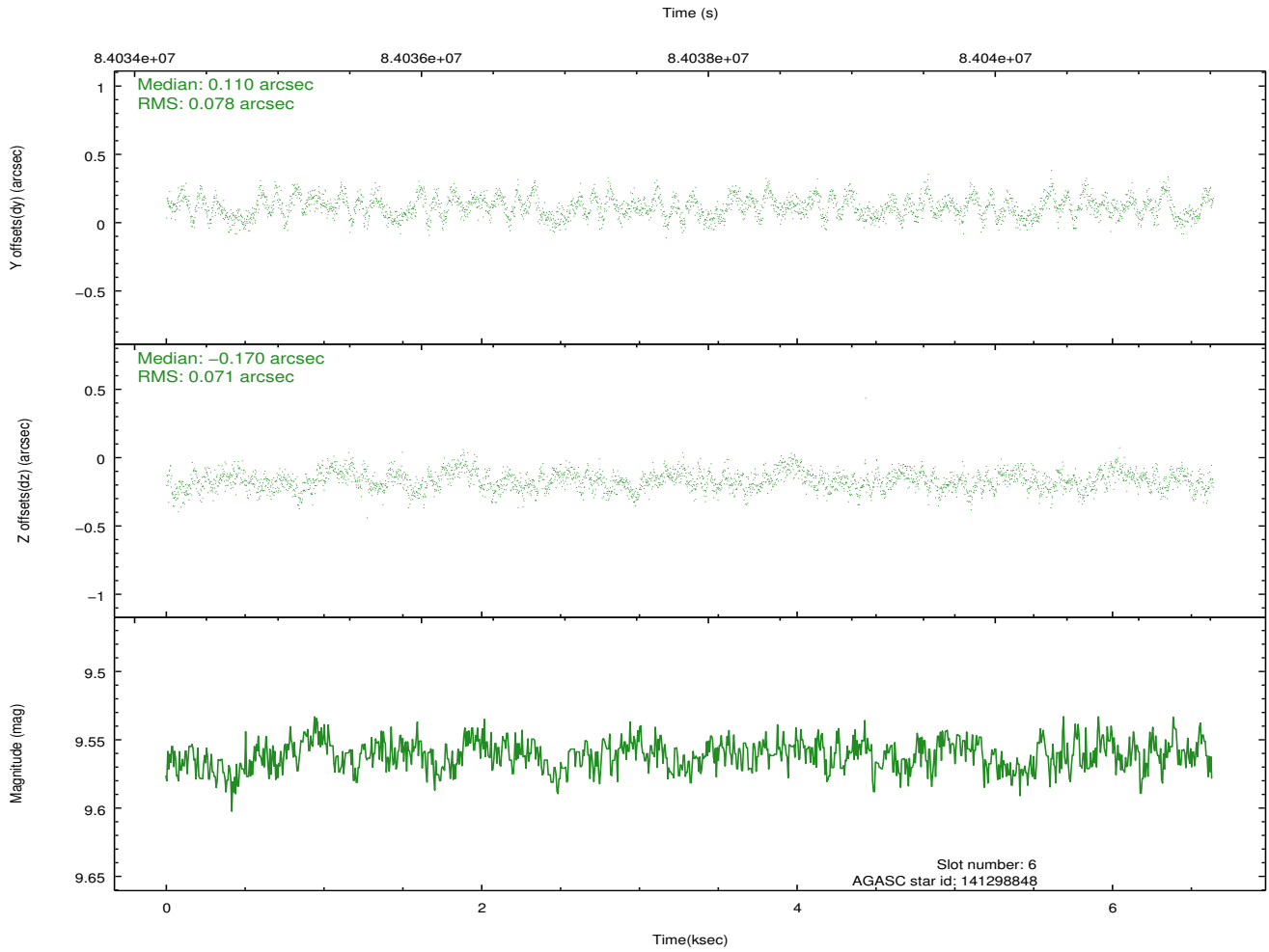
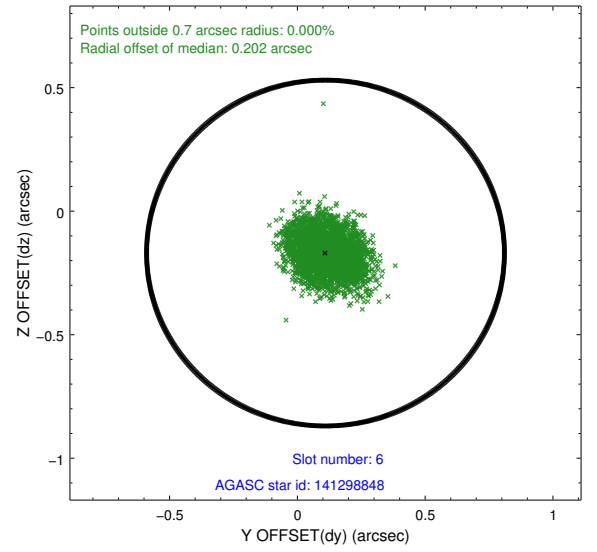
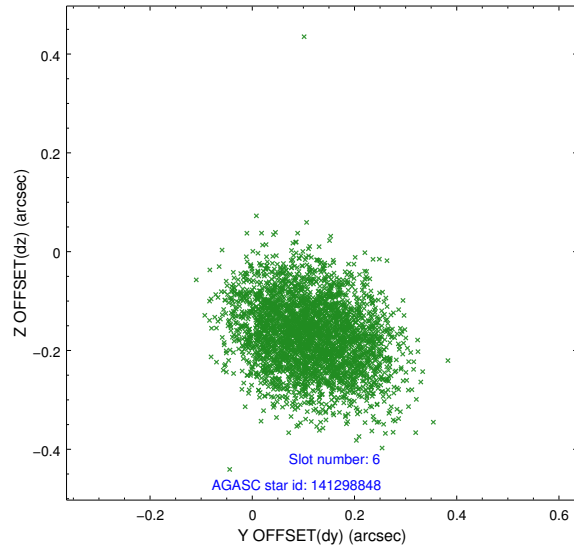
## 2.4.2 Slot 4



### 2.4.3 Slot 5

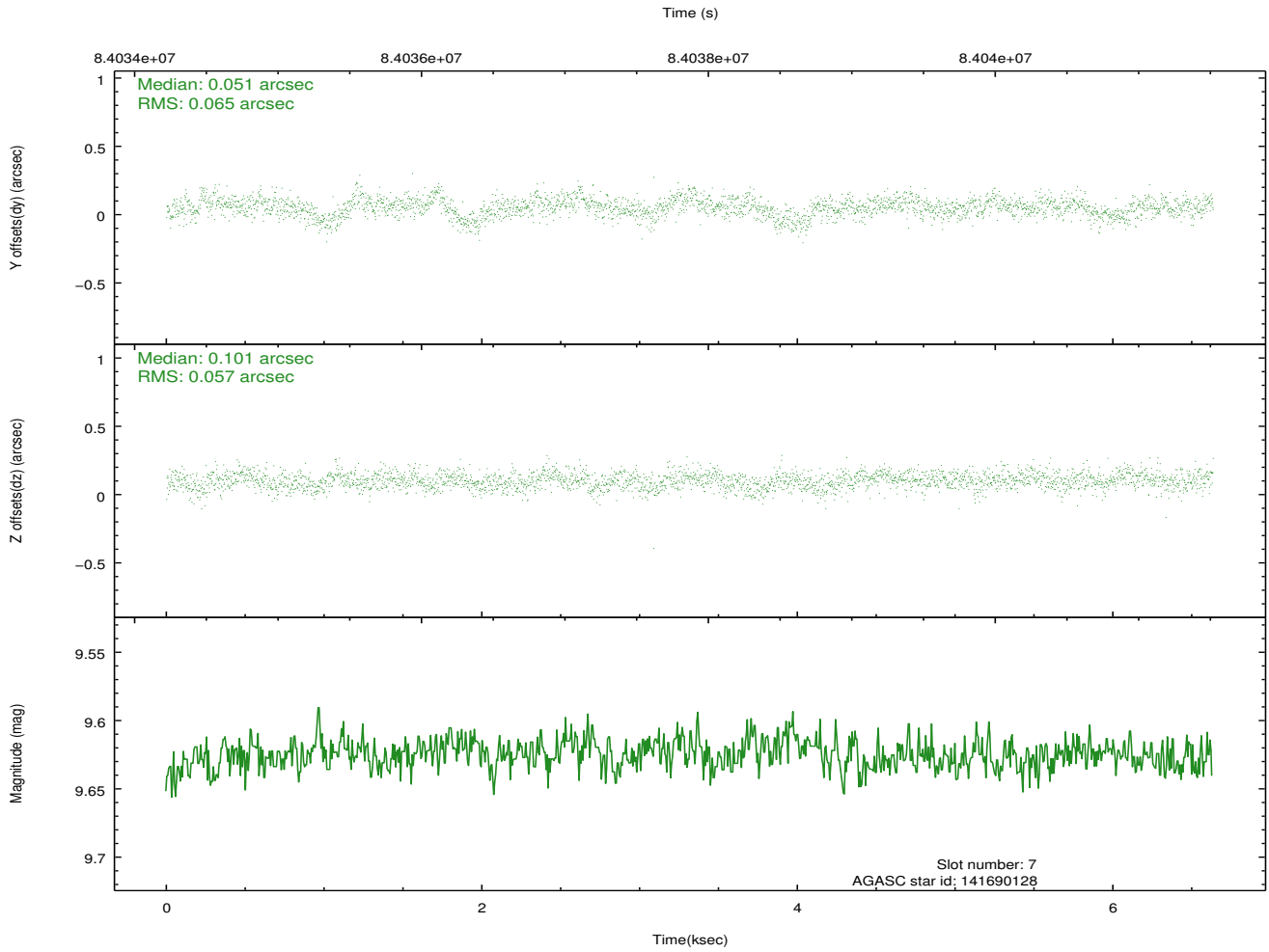
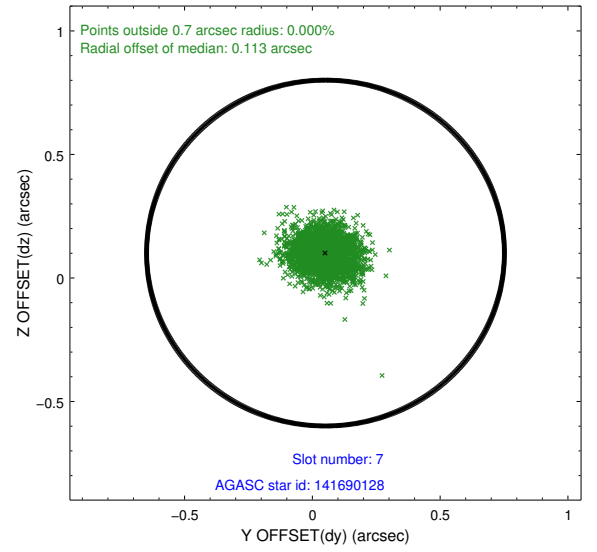
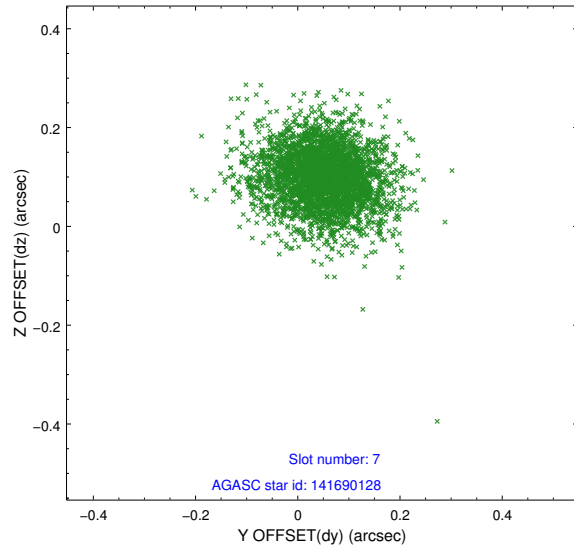


## 2.4.4 Slot 6



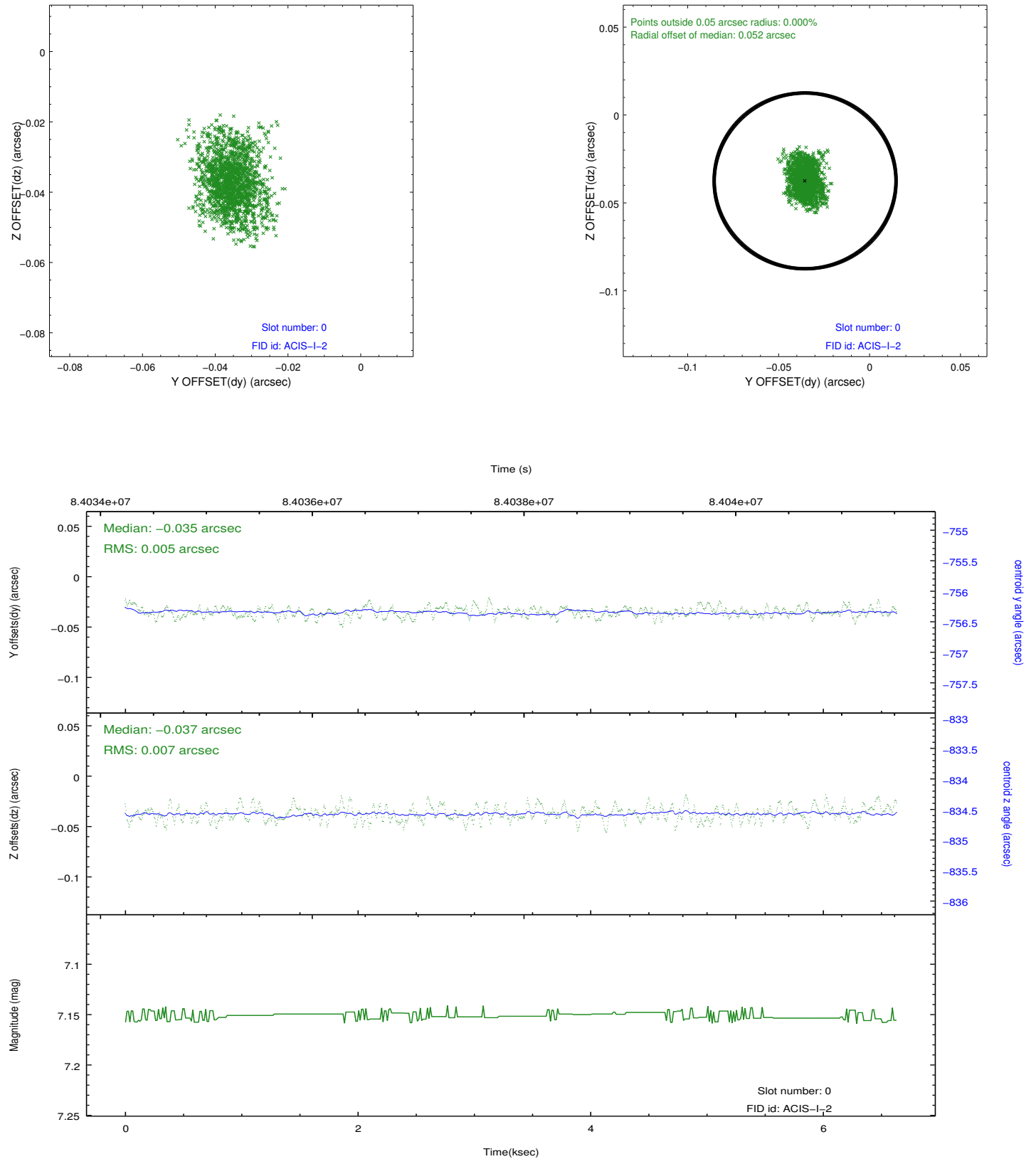


## 2.4.5 Slot 7

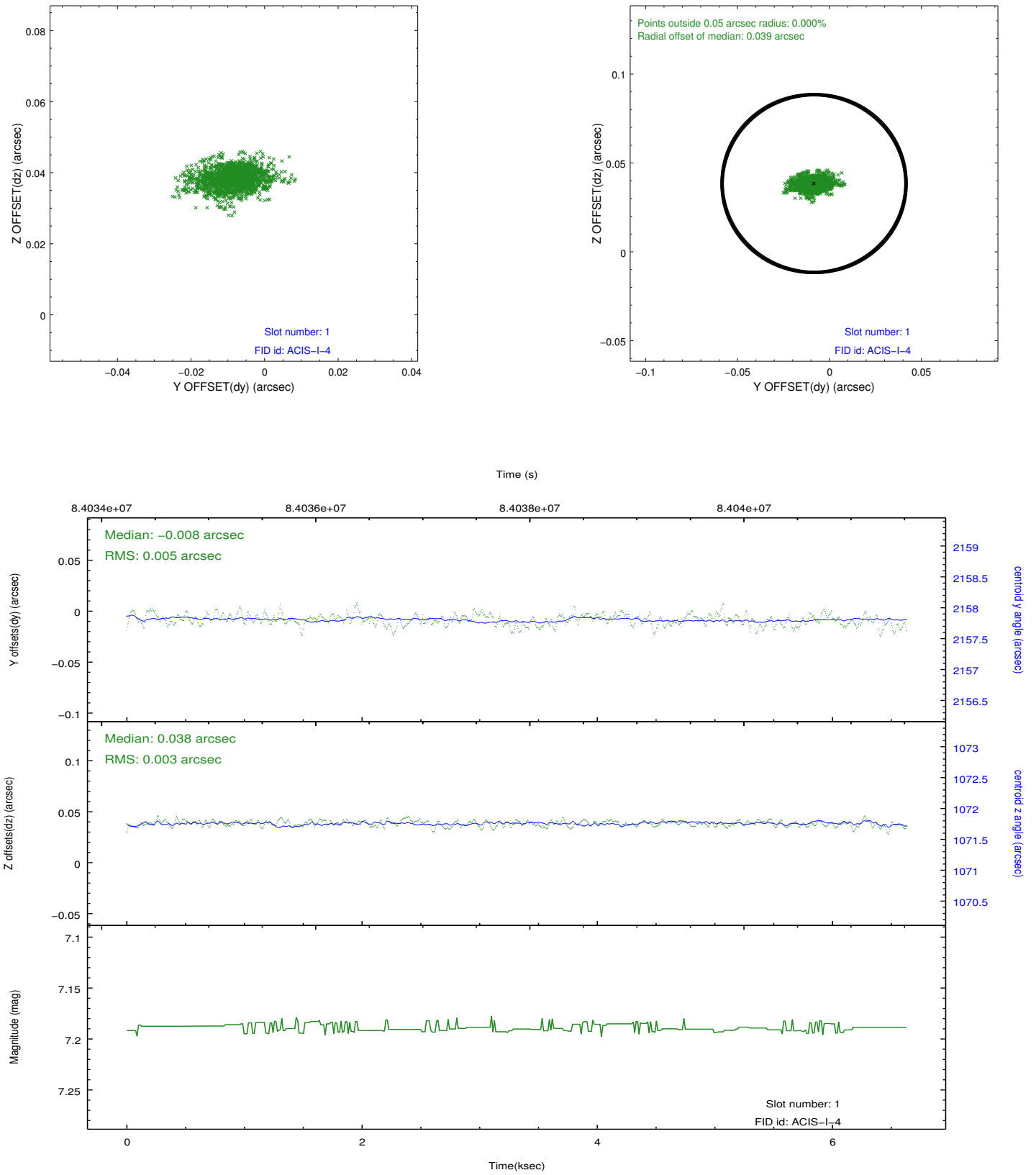


## 2.5 FID Slots

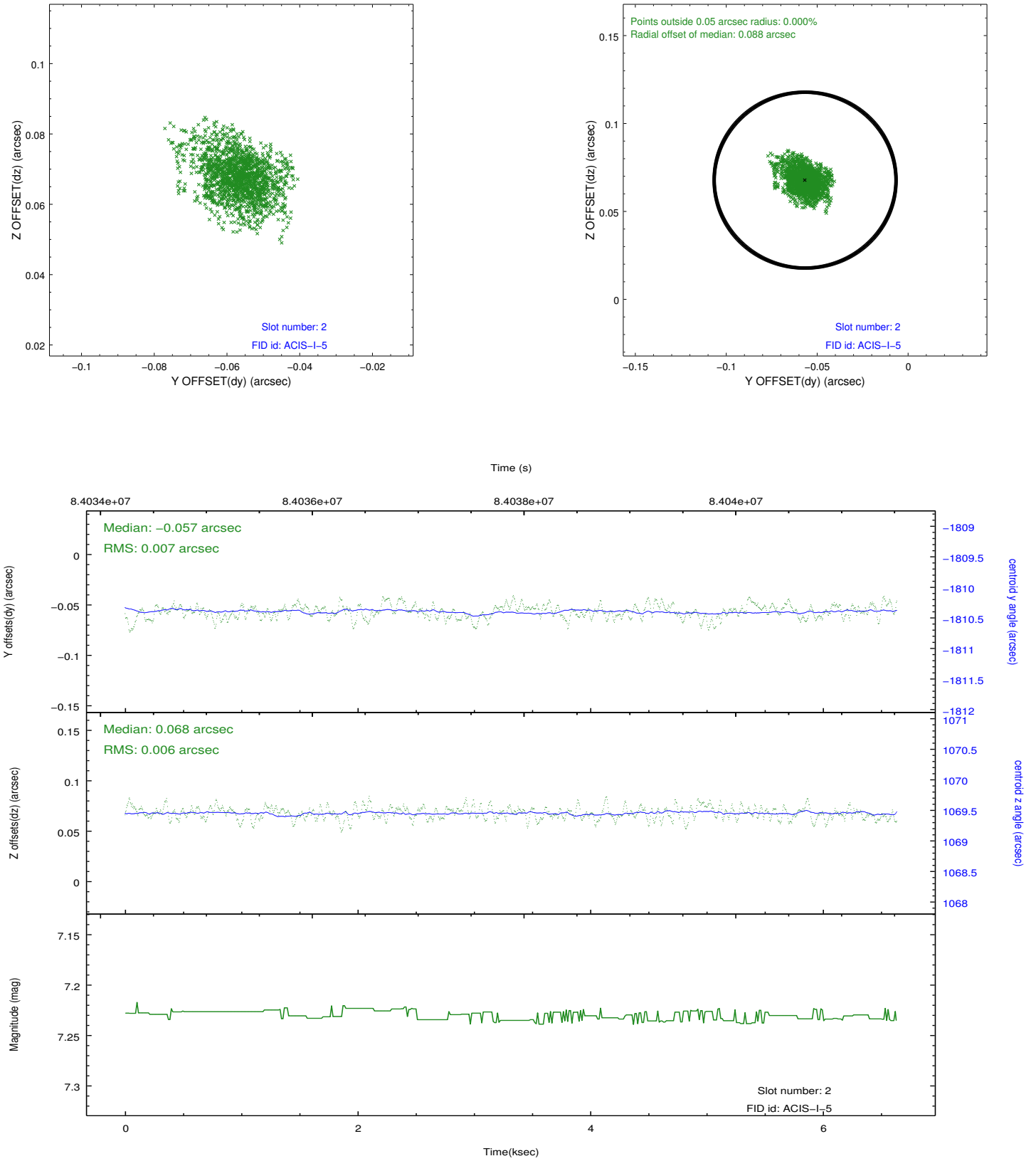
### 2.5.1 Slot 0



## 2.5.2 Slot 1



### 2.5.3 Slot 2



## A Summary

### A.1 Status

V&V Scientist	Jen Lauer
V&V Date (YYYY-MM-DD)	2012.09.06
V&V Edition	1
V&V Disposition and Status	OK
V&V Charge Time	6.627

### A.2 Comments