

V&V Reference Report

L2 ASCDS Version : 8.4.5

Observation 891 - L2 Version 4
Chandra X-Ray Center

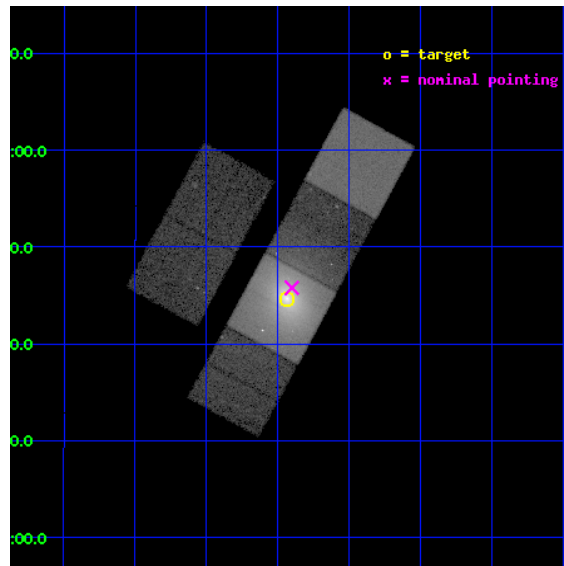
L2 Processing Date : Aug 25 2012

Contents

1	Front	2
2	OBI	3
2.1	OBI	3
2.1.1	Images	3
2.1.2	Bias	3
2.1.3	Parameters	4
2.1.4	Events	4
2.2	Compared Parameters	5
2.3	Aspect	6
2.4	Star Slots	9
2.4.1	Slot 3	9
2.4.2	Slot 4	10
2.4.3	Slot 5	11
2.4.4	Slot 6	12
2.4.5	Slot 7	13
2.5	FID Slots	14
2.5.1	Slot 0	14
2.5.2	Slot 1	15
2.5.3	Slot 2	16
A	Summary	17
A.1	Status	17
A.2	Comments	17

1 Front

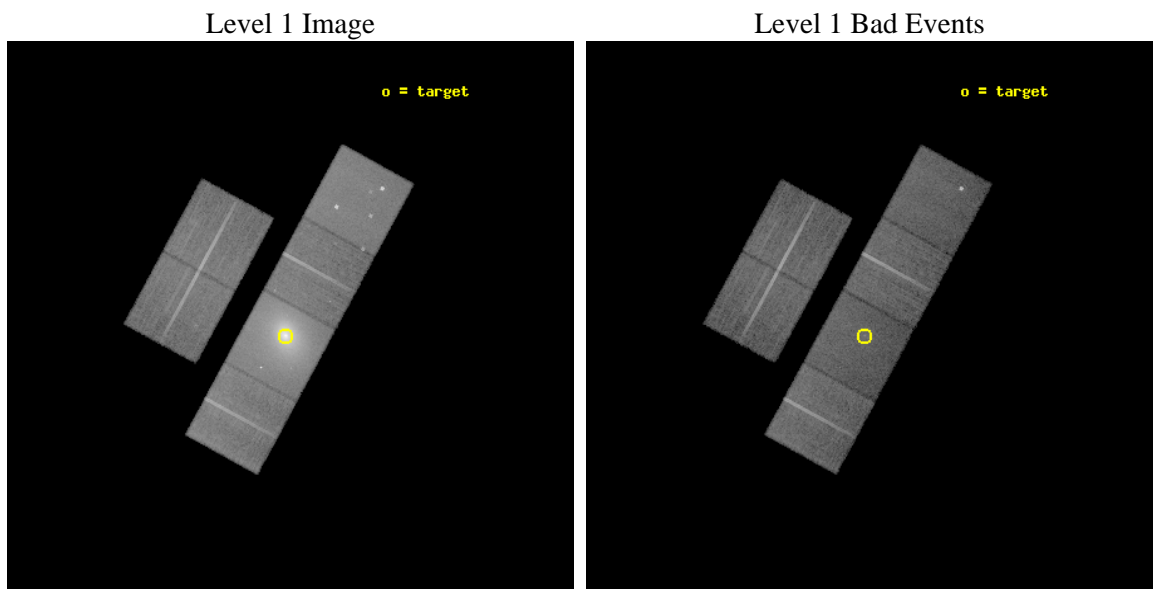
seq_num	800067	Sequence number
obs_id	891	Observation id
title	A2029: COOLING FLOW OR SHOCKED MERGER EVENT?	Proposal title
observer	Dr. John Stocke	Principal investigator
object	A2029	Source name
dtcycle	0	
cycle	P	events from which exps? Prim/Second/Both
ra_targ	227.73375	Observer's specified target RA [deg]
dec_targ	5.743889	Observer's specified target Dec [deg]
ra_nom	227.72529685572	Nominal RA [deg]
dec_nom	5.7632536478194	Nominal Dec [deg]
roll_nom	118.56454221437	Nominal Roll [deg]
revision	4	Processing version of data
ontime	20067.159058452	Sum of GTIs [s]
livetime	19813.056607461	Livetime [s]
ontime2	20070.400018677	Sum of GTIs [s]
ontime3	20070.400018677	Sum of GTIs [s]
ontime5	20070.400018677	Sum of GTIs [s]
ontime6	20067.159058452	Sum of GTIs [s]
ontime7	20067.159058452	Sum of GTIs [s]
ontime8	20070.400018677	Sum of GTIs [s]
l2events	548001	Number of level 2 events



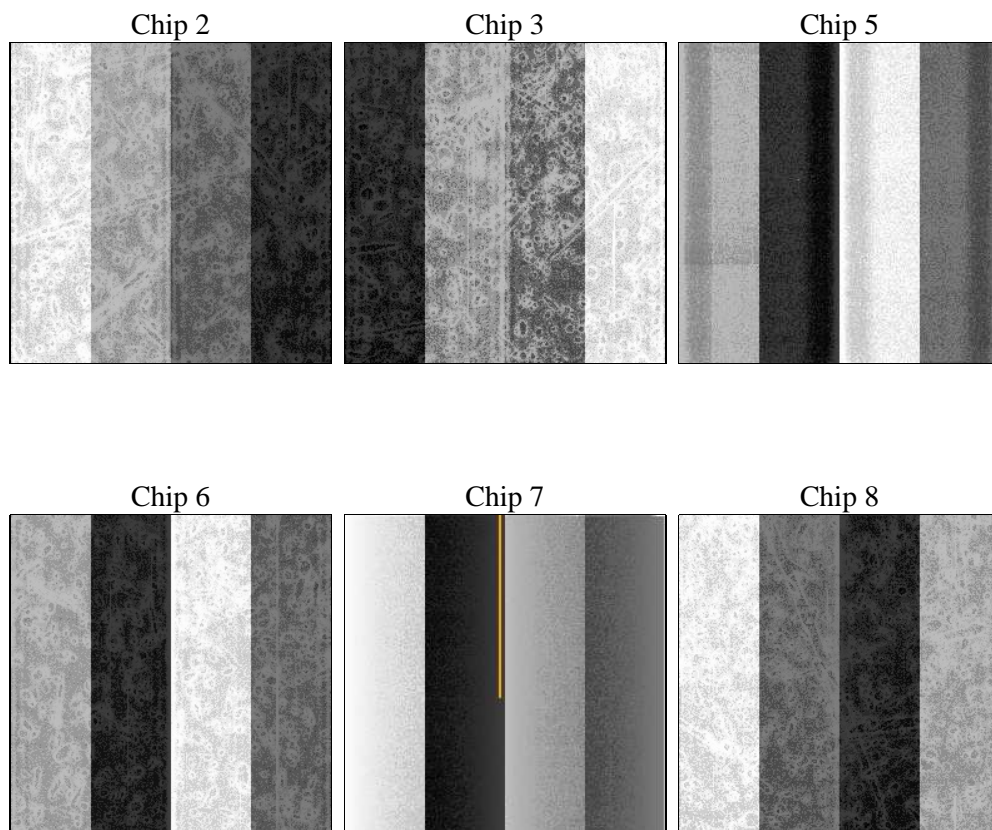
2 OBI

2.1 OBI

2.1.1 Images



2.1.2 Bias



2.1.3 Parameters

obi_num	0	Obi number	sched_exp_time	19600.000000	[s] Scheduled observation exposure time
ascdsver	8.4.5	Processing system revision	ontime	20067.159058452	Sum of GTIs [s]
caldsver	4.5.1.1	 	ontime2	20070.400018677	Sum of GTIs [s]
date	2012-08-25T15:50:58	Date and time of file creation	ontime3	20070.400018677	Sum of GTIs [s]
revision	4	Processing version of data	ontime5	20070.400018677	Sum of GTIs [s]
			ontime6	20067.159058452	Sum of GTIs [s]
			ontime7	20067.159058452	Sum of GTIs [s]
			ontime8	20070.400018677	Sum of GTIs [s]
			l1events	1339365	Number of level 1 events

2.1.4 Events

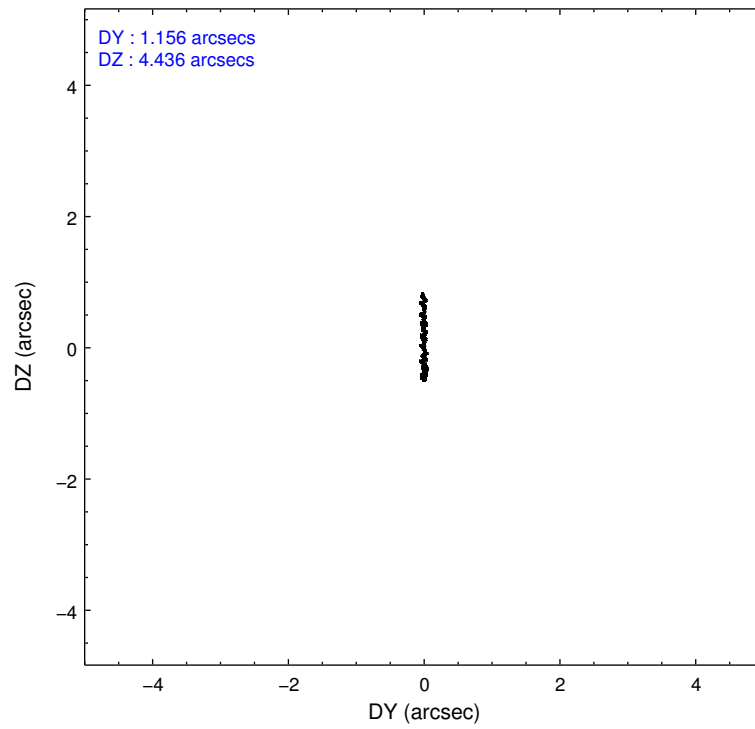
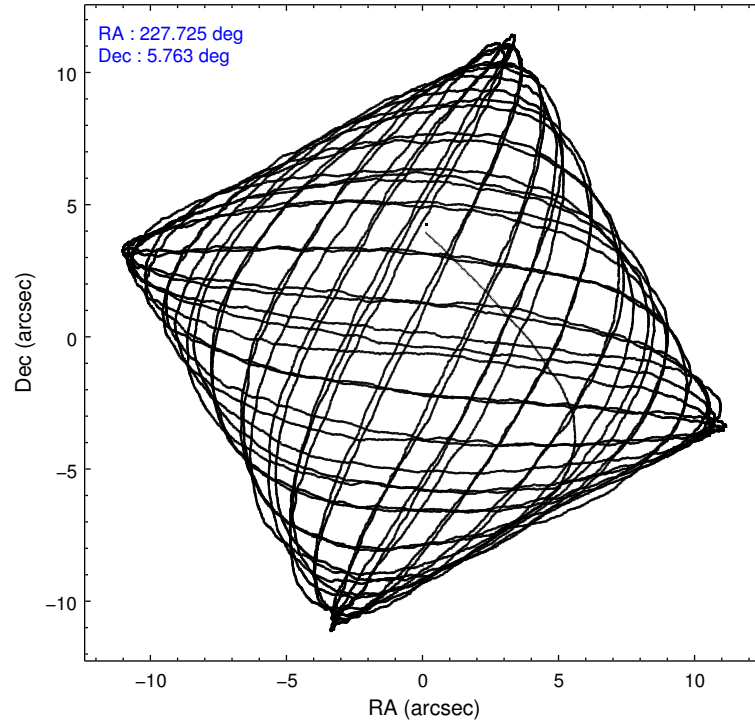
	ccd 2	ccd 3	ccd 5	ccd 6	ccd 7	ccd 8		ccd 2	ccd 3	ccd 5	ccd 6	ccd 7	ccd 8
level 1 events	155746	147497	197890	163167	491416	183649	grade 0 events	8372	8544	16204	19356	112751	14998
rejected events	138184	130055	102959	132264	99515	144510		5%	5%	8%	11%	22%	8%
rejected %	88%	88%	52%	81%	20%	78%	grade 1 events	80	92	235	117	305	104
								0%	0%	0%	0%	0%	0%
							grade 2 events	3437	3046	26309	4336	97155	7916
								2%	2%	13%	2%	19%	4%
							grade 3 events	1540	1552	4634	1992	43952	3765
								0%	1%	2%	1%	8%	2%
							grade 4 events	1589	1613	4042	1952	43434	3550
								1%	1%	2%	1%	8%	1%
							grade 5 events	4497	4903	15235	5390	18111	7008
								2%	3%	7%	3%	3%	3%
							grade 6 events	2665	2728	43974	3341	95534	8996
								1%	1%	22%	2%	19%	4%
							grade 7 events	133566	125019	87257	126683	80174	137312
								85%	84%	44%	77%	16%	74%

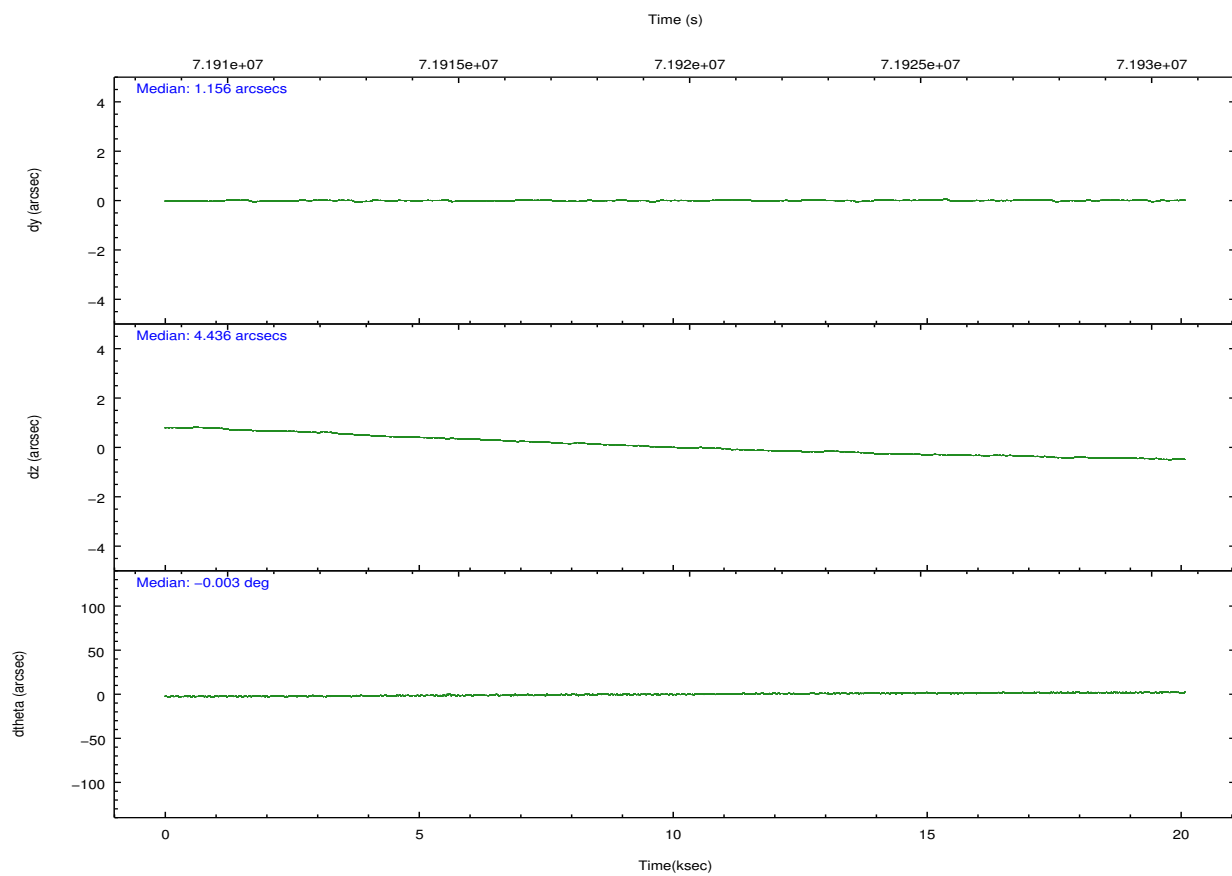
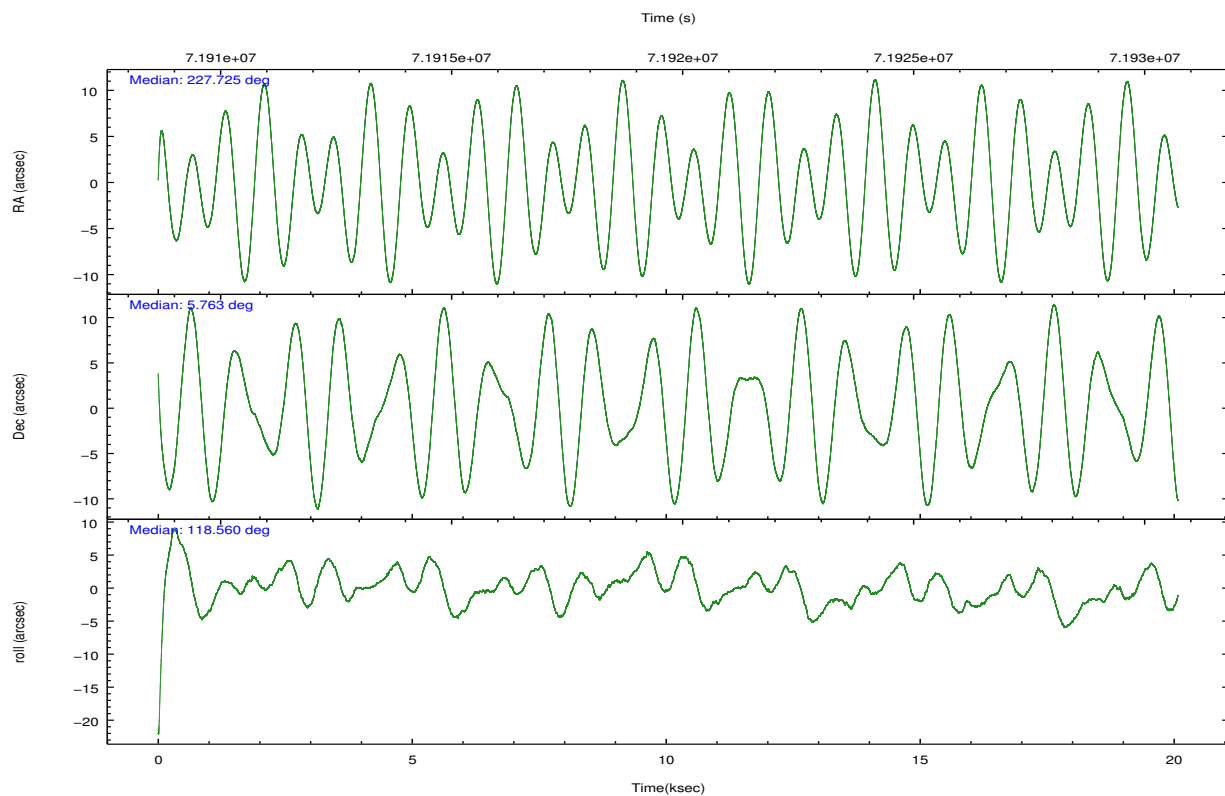
2.2 Compared Parameters

Parameter	Planned	Actual
Instrument	ACIS	ACIS
Detector	ACIS-235678	ACIS-235678
Grating	NONE	NONE
Data mode	FAINT	FAINT
Observation mode	POINTING	POINTING
[deg] Pointing RA	227.748873	227.7252968557182
[deg] Pointing Dec	5.748996	5.763253647819447
[deg] Pointing Roll	118.405561	118.564542214369
[s] Window start time (MET)	63072064.184000	63072064.184000
[s] Window stop time (MET)	84153664.184000	84153664.184000
[mm] SIM focus pos	-0.684267	-0.6828225247311905
[mm] SIM defocus	0	0.001444936568705701
[mm] SIM translation stage pos	-190.132523	-190.1425803651734
[mm] SIM translation stage offset	0	0.01005778216563158
[s] Observation start time (MET)	71910123.184000	71908736.486507
Observation start date	2000-04-12T07:00:59	2000-04-12T06:38:56
[s] Observation end time (MET)	71929723.184000	71930483.399804
Observation end date	2000-04-12T12:27:39	2000-04-12T12:41:23
Read mode	TIMED	TIMED

Parameter	Planned	Actual
Obspar format version number	7	7
Obspar file type	PREDICTED	ACTUAL
Obspar update status	NONE	UPDATED
Number of optional ACIS chips dropped	0	0
On-chip summing requested	N	N
Subarray requested	NONE	NONE
Alternating exposures requested	N	N
[s] Primary exposure time	0.000000	3.2

2.3 Aspect



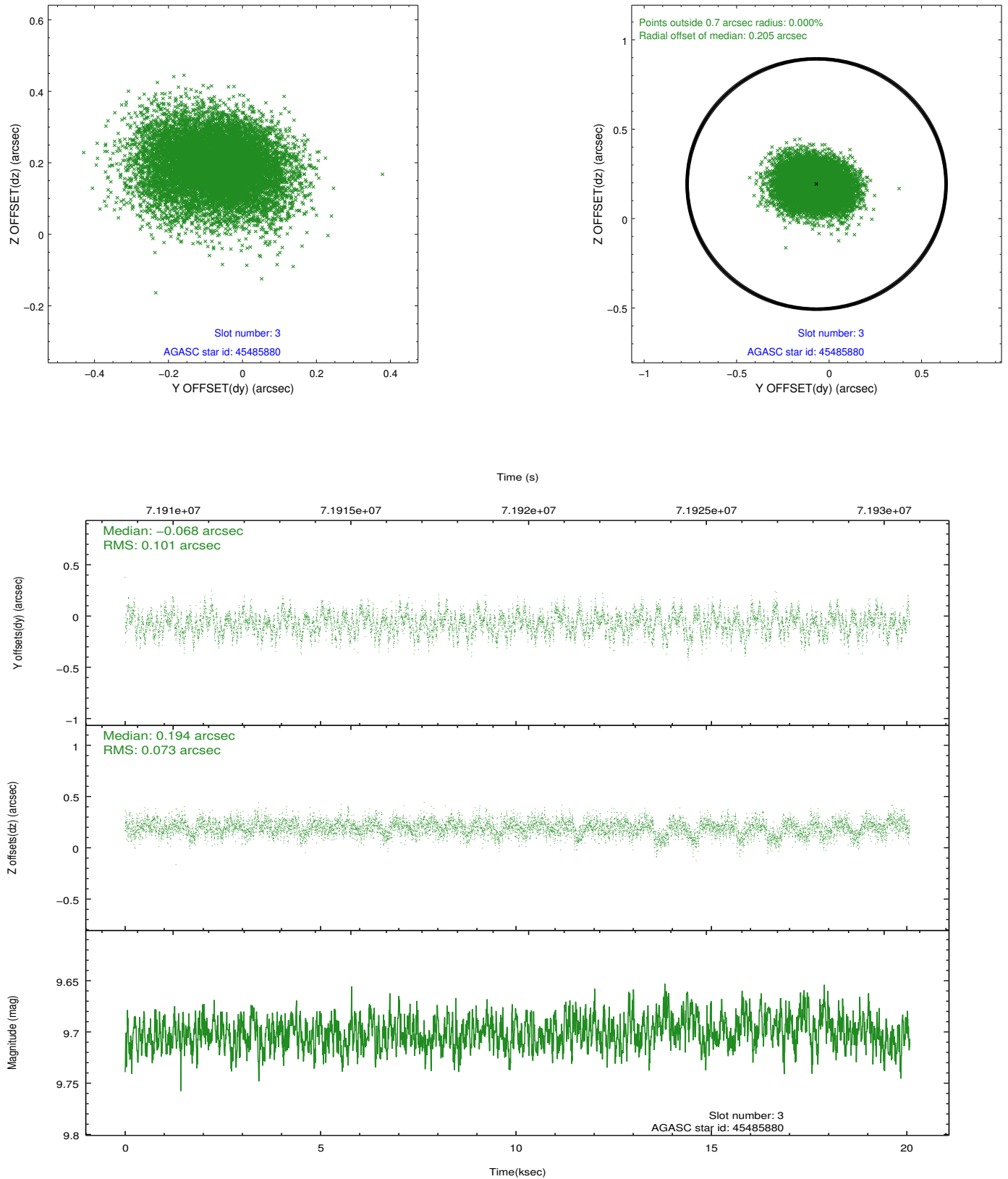


Slot Statistics

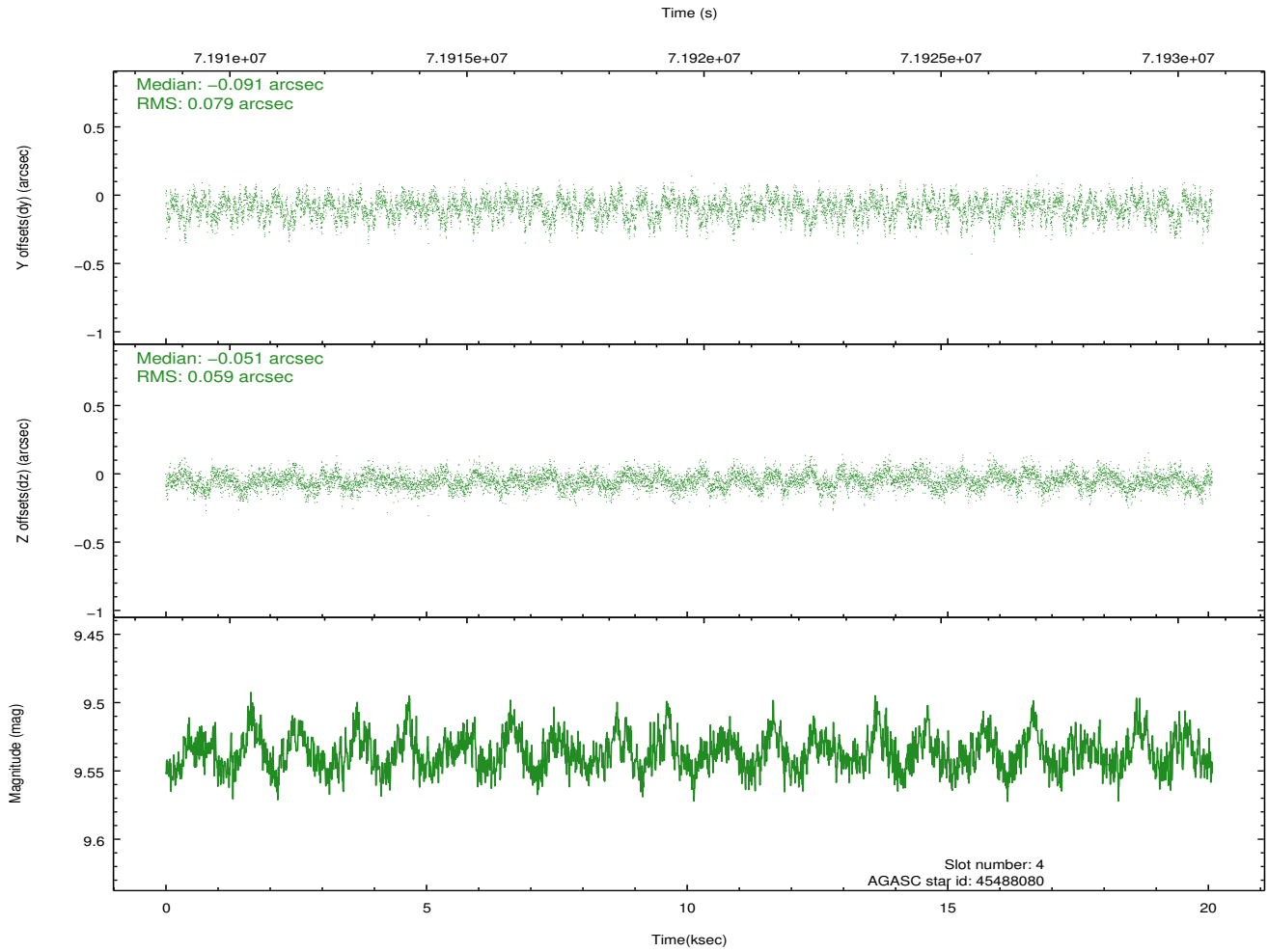
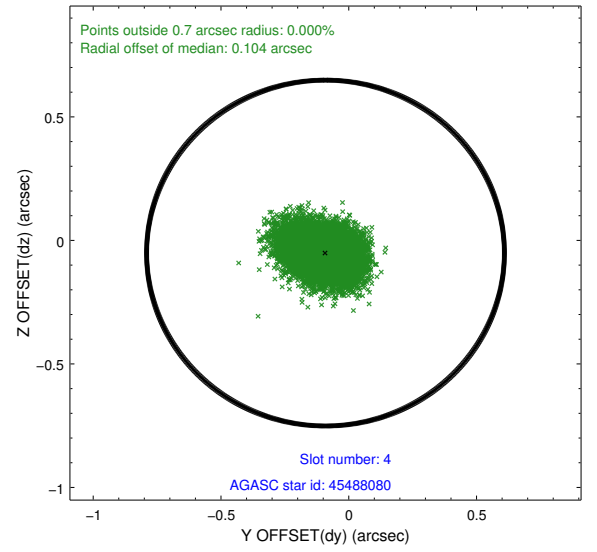
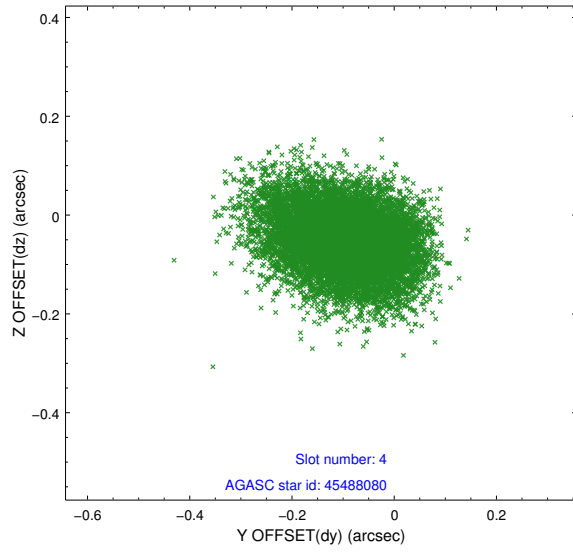
slot	status	id	mag	n_pts	med_dy	med_dz	dr1	dr2	ra	dec	mean_y	mean_z
0	FID	ACIS-S-2	7.11	4897	-0.021	-0.010	0.011	0.018	0.000000	0.000000	-753.78	-1725.56
1	FID	ACIS-S-4	7.21	4896	-0.001	0.013	0.006	0.011	0.000000	0.000000	2159.45	182.73
2	FID	ACIS-S-5	7.24	4896	-0.008	0.006	0.012	0.018	0.000000	0.000000	-1806.35	176.64
3	GUIDE	45485880	9.70	9792	-0.068	0.194	0.134	0.218	228.190636	6.293142	971.78	-2321.89
4	GUIDE	45488080	9.54	9784	-0.091	-0.051	0.105	0.170	226.925531	5.883747	1831.07	2362.06
5	GUIDE	44961784	10.45	9782	0.135	0.065	0.136	0.221	228.123885	5.352388	-1894.58	-502.66
6	GUIDE	45486896	10.26	9784	-0.037	-0.092	0.148	0.242	227.000545	5.964623	1958.66	1987.25
7	GUIDE	44959152	10.61	9789	0.058	-0.114	0.163	0.264	227.413679	5.123161	-1409.65	2129.31

2.4 Star Slots

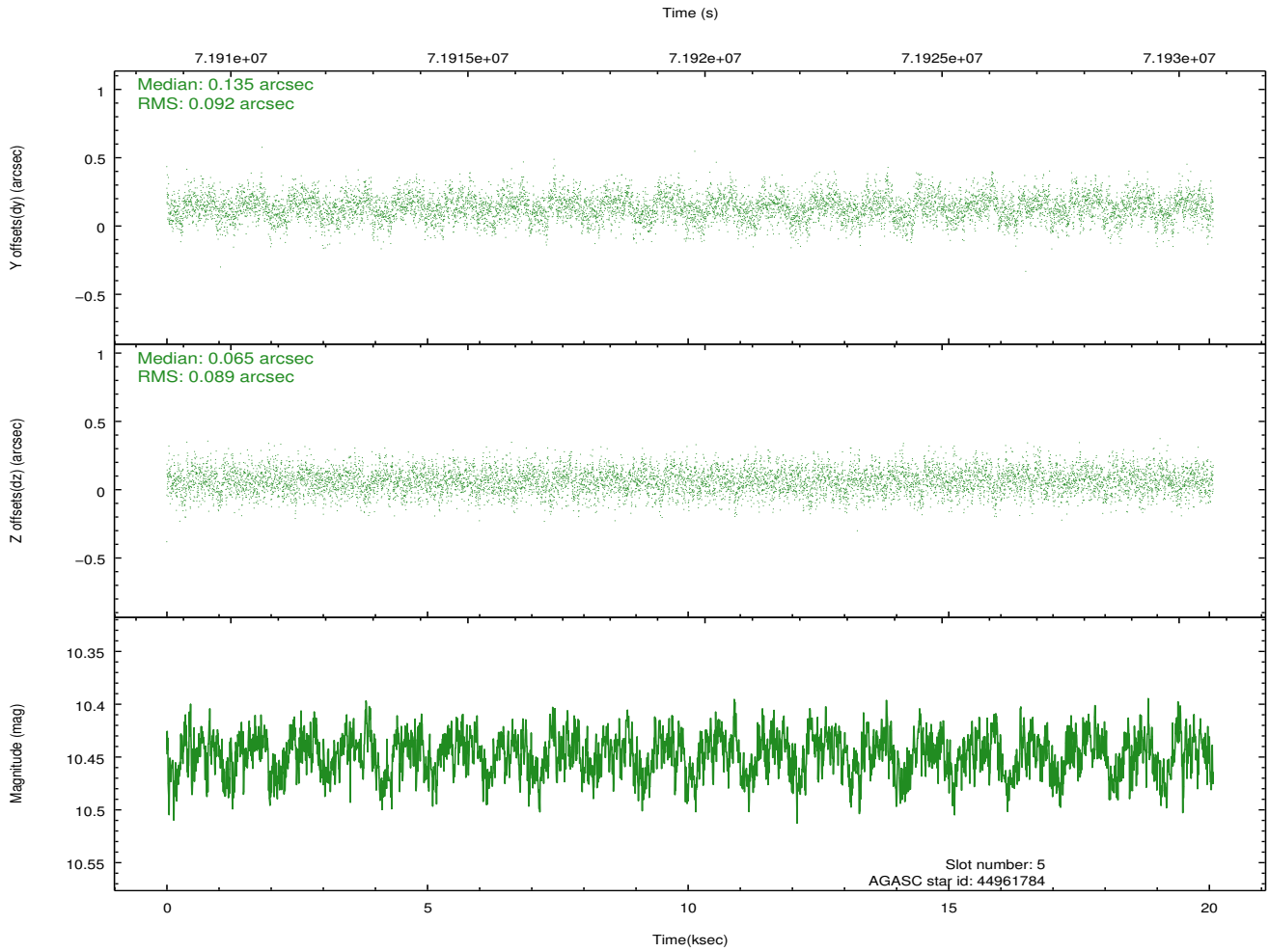
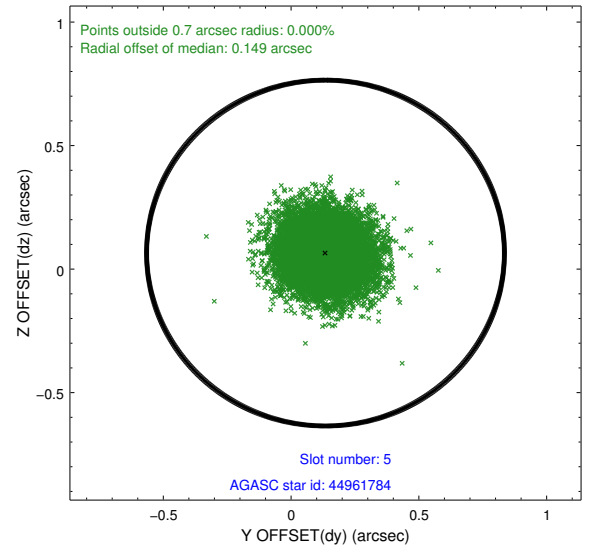
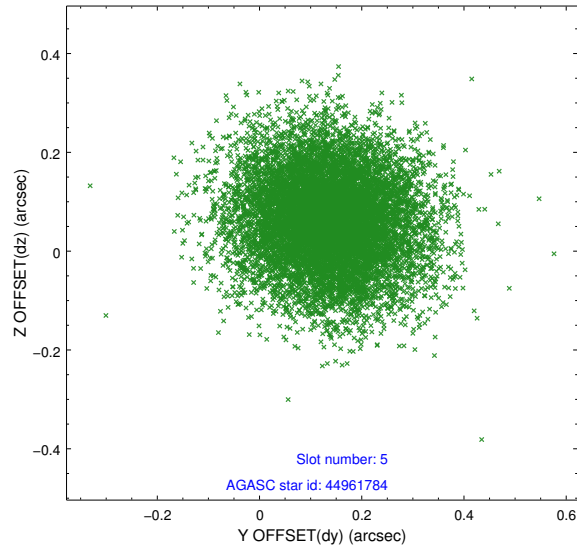
2.4.1 Slot 3



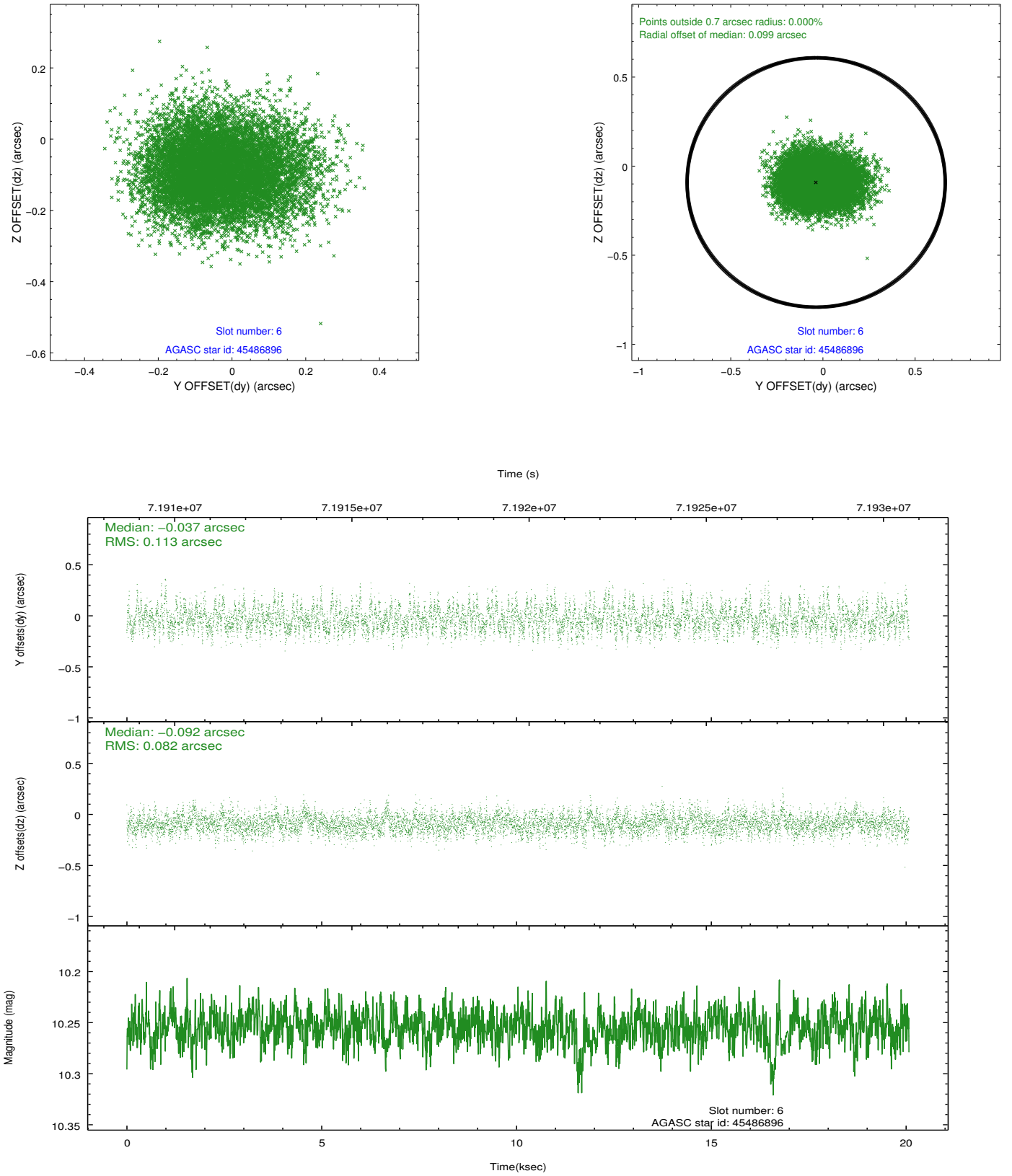
2.4.2 Slot 4



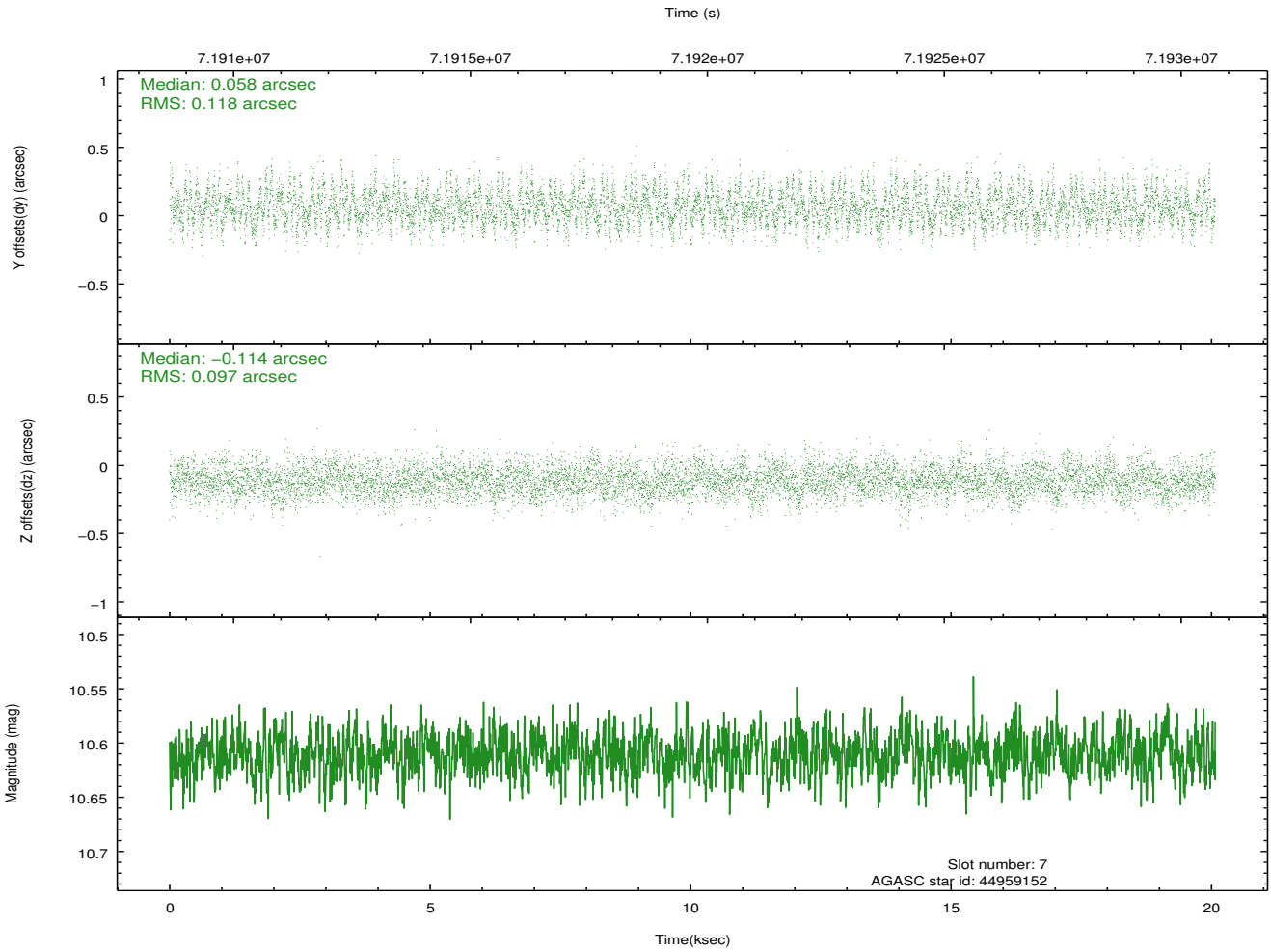
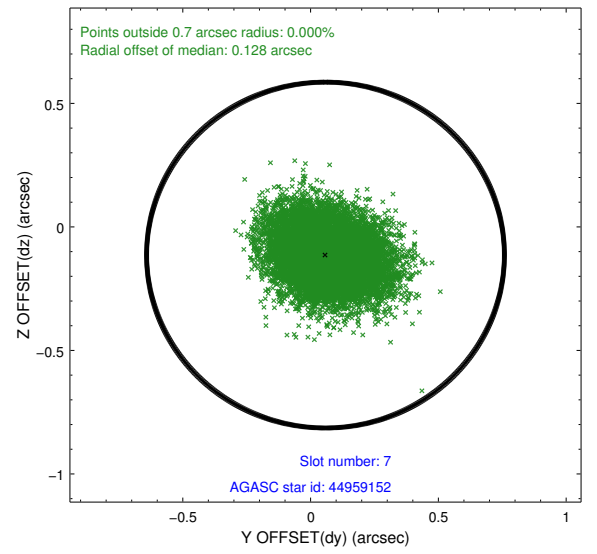
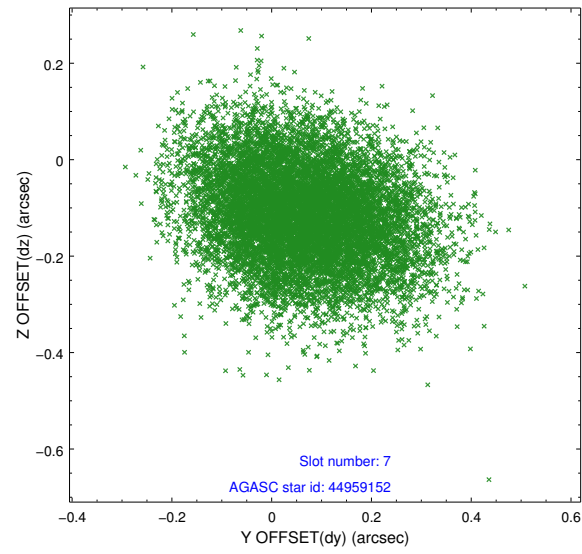
2.4.3 Slot 5



2.4.4 Slot 6

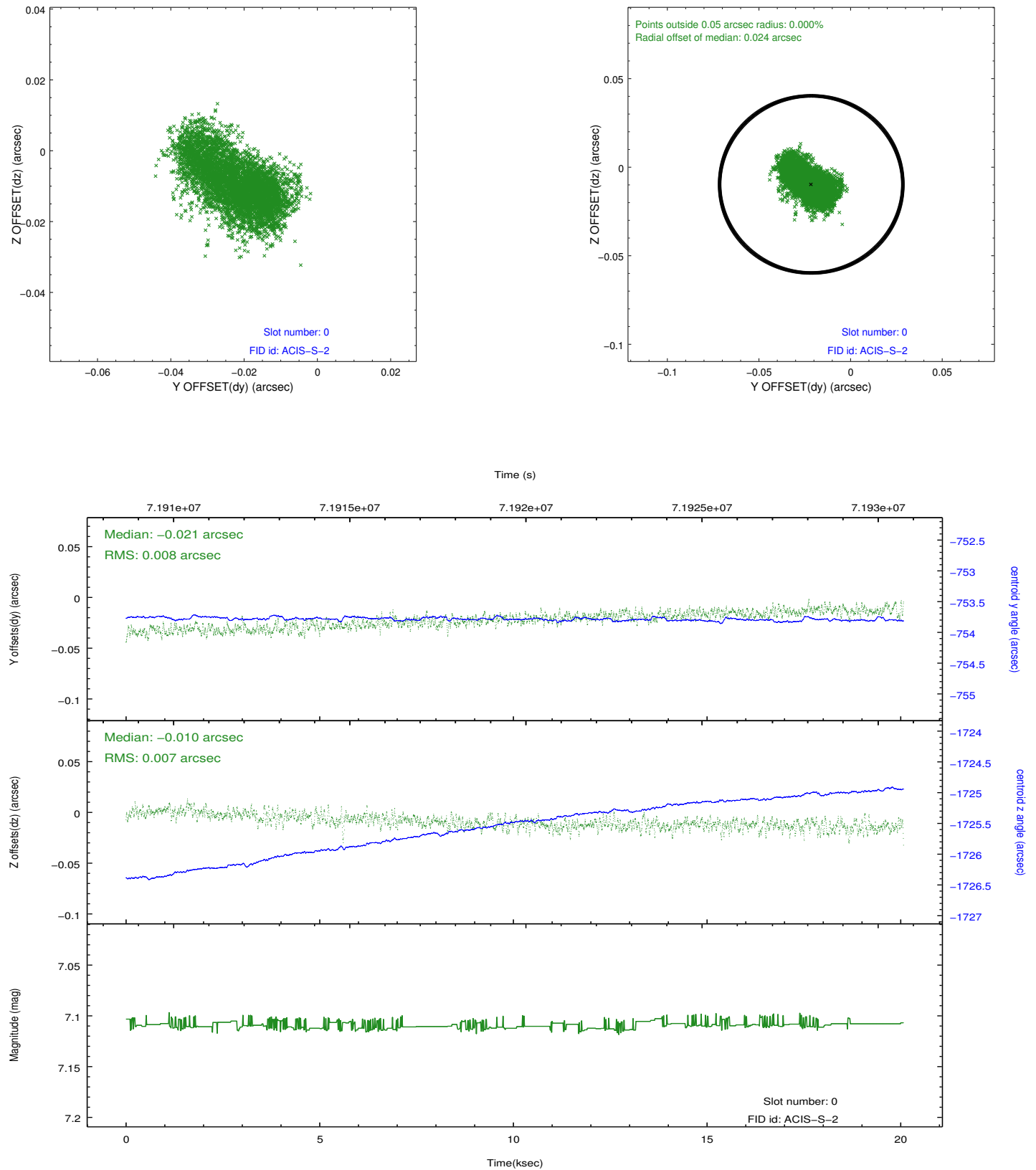


2.4.5 Slot 7

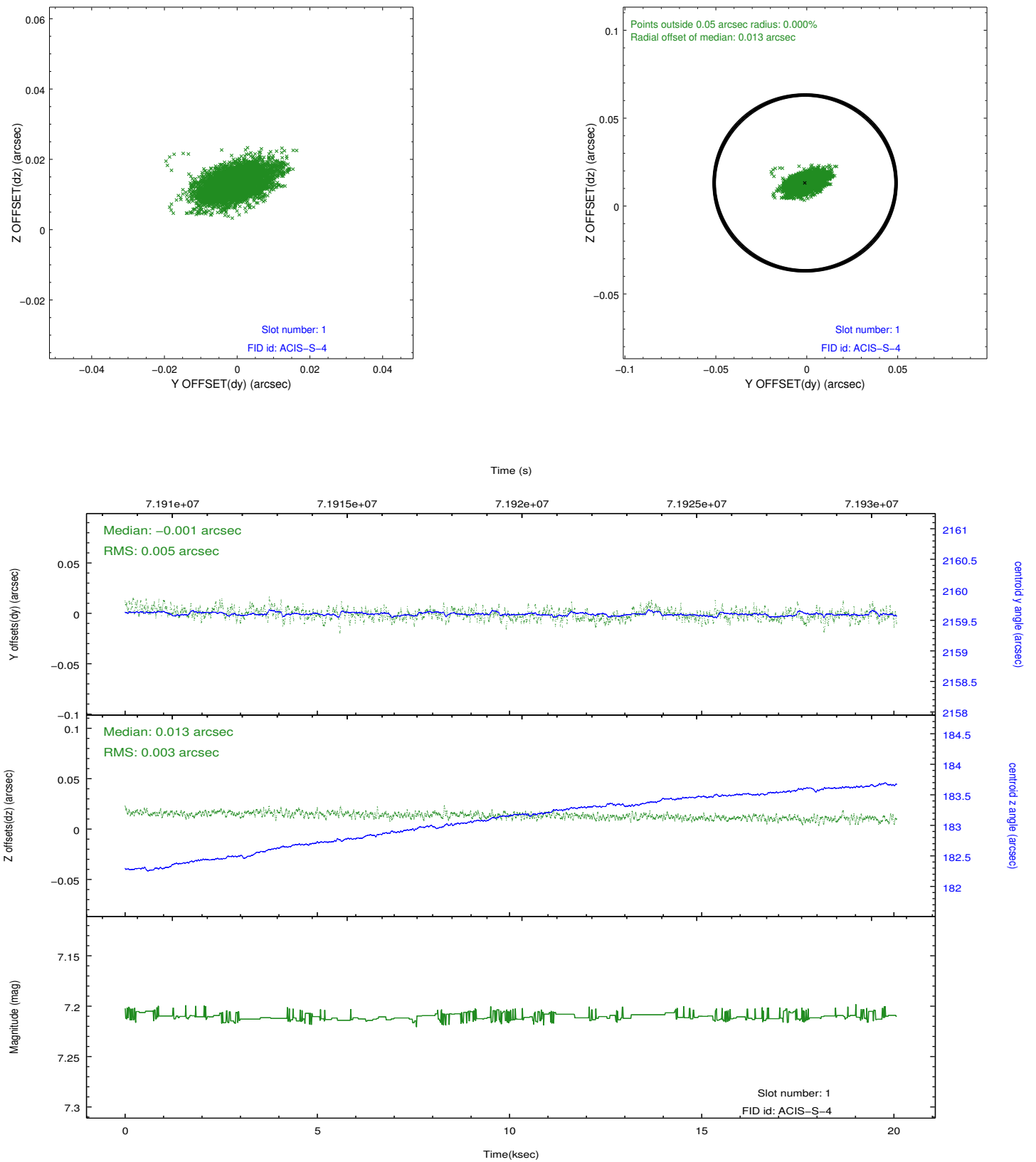


2.5 FID Slots

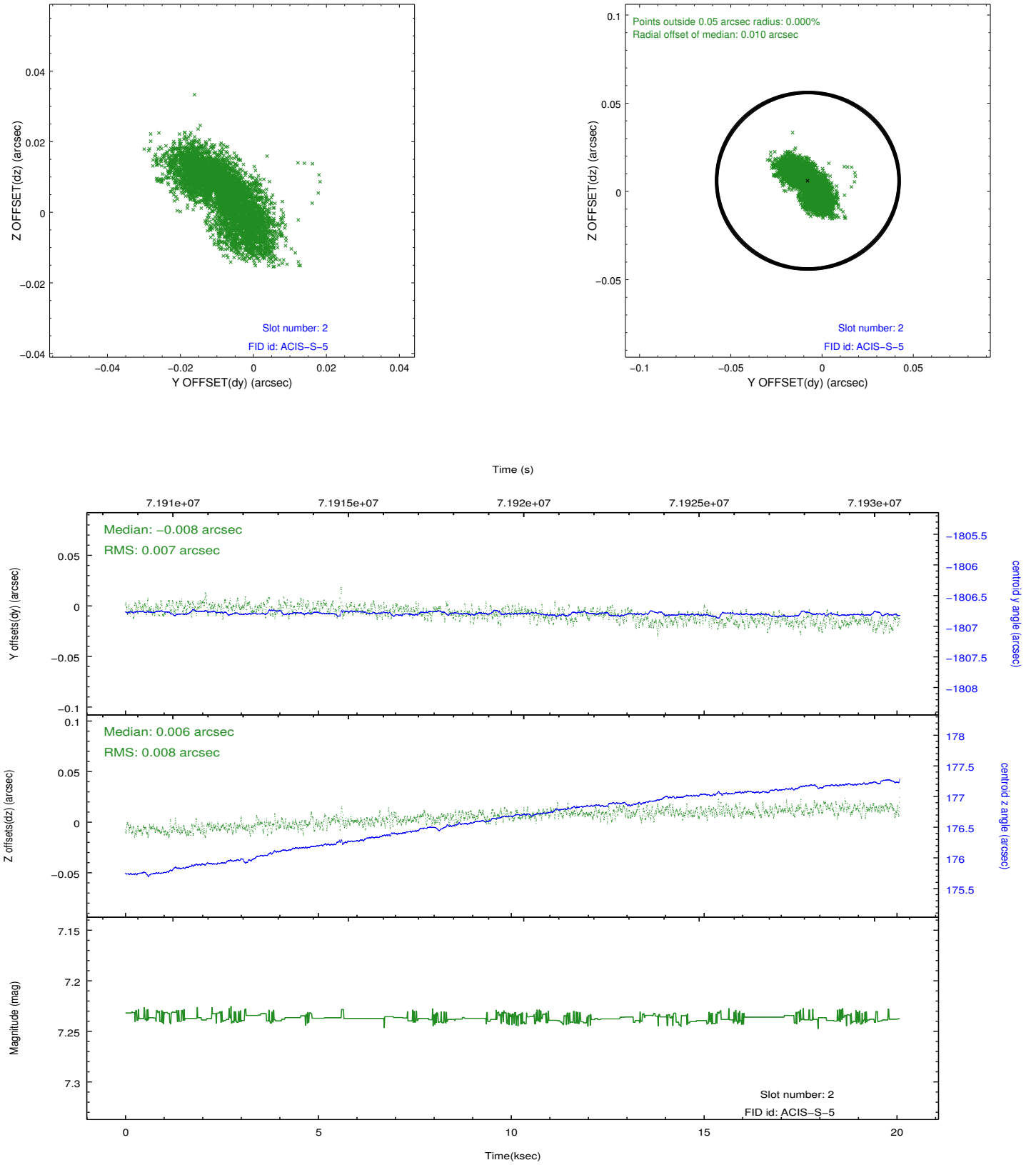
2.5.1 Slot 0



2.5.2 Slot 1



2.5.3 Slot 2



A Summary

A.1 Status

V&V Scientist	Jen Lauer
V&V Date (YYYY-MM-DD)	2012.08.28
V&V Edition	1
V&V Disposition and Status	OK
V&V Charge Time	20.067

A.2 Comments

Window constraint met.