

V&V Reference Report

L2 ASCDS Version : 8.1.2

Observation 871 - L2 Version 4

Chandra X-Ray Center

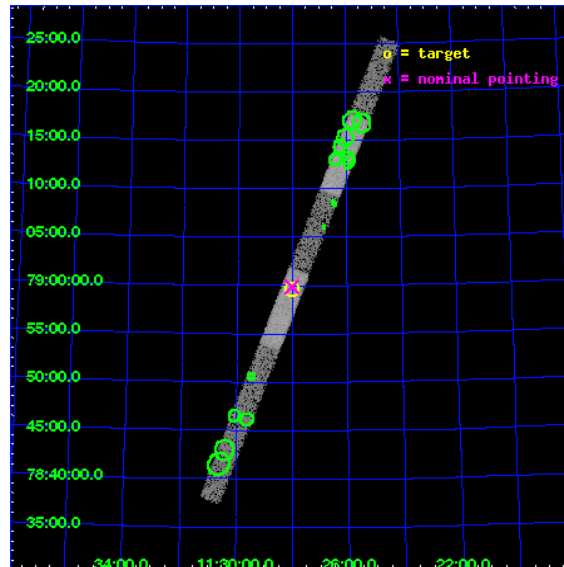
L2 Processing Date : Dec 2 2009

Contents

1	Front	2
2	OBI	3
2.1	OBI	3
2.1.1	Images	3
2.1.2	Bias	3
2.1.3	Parameters	4
2.1.4	Events	4
2.2	Compared Parameters	5
2.3	Aspect	6
2.4	Star Slots	9
2.4.1	Slot 3	9
2.4.2	Slot 4	10
2.4.3	Slot 5	11
2.4.4	Slot 6	12
2.4.5	Slot 7	13
2.5	FID Slots	14
2.5.1	Slot 0	14
2.5.2	Slot 1	15
2.5.3	Slot 2	16
3	Point Sources	17
A	Summary	18
A.1	Status	18
A.2	Comments	18

1 Front

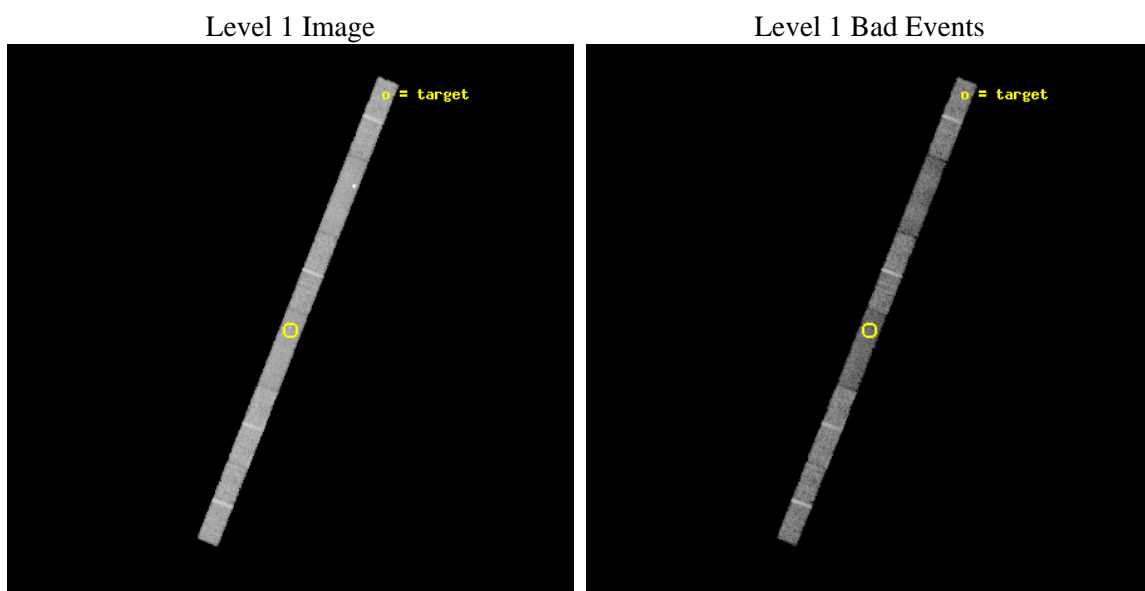
seq_num	700176	Sequence number
obs_id	871	Observation id
title	X-RAY OBSERVATION OF THE NEAREST LINERS AND SEYFERT GALAXIES	Propo
observer	DR PAULINA LIRA	Principal investigator
object	UGC 6456	Source name
dtcycle	0	
cycle	P	events from which exps? Prim/Second/Both
ra_targ	172.005417	Observer's specified target RA
dec_targ	78.992944	Observer's specified target Dec
ra_nom	172.00584576052	Nominal RA
dec_nom	78.997858112162	Nominal Dec
roll_nom	111.60865836067	Nominal Roll
revision	4	Processing version of data
ontime	10631.370887153	Sum of GTIs [s]
livetime	10248.990373579	Livetime [s]
ontime4	10630.106747076	Sum of GTIs [s]
ontime5	10631.329847157	Sum of GTIs [s]
ontime6	10631.288807154	Sum of GTIs [s]
ontime7	10631.370887153	Sum of GTIs [s]
ontime8	10631.206727155	Sum of GTIs [s]
ontime9	10631.411927156	Sum of GTIs [s]
l2events	29288	Number of level 2 events



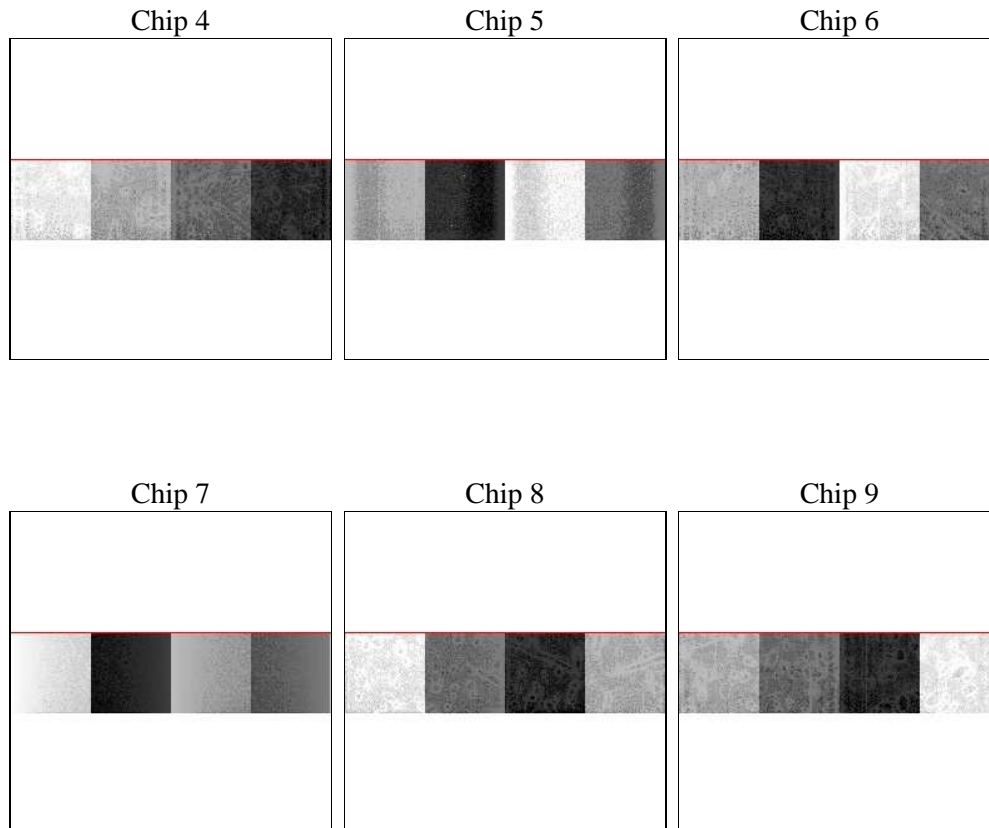
2 OBI

2.1 OBI

2.1.1 Images



2.1.2 Bias



2.1.3 Parameters

obi_num	0	Obi number	sched_exp_time	11000.000000	Scheduled observation exposure time
ascdsver	8.1.2	ASCDS version number	ontime	10631.370887153	Sum of GTIs [s]
caldsver	4.1.4	 	ontime4	10630.106747076	Sum of GTIs [s]
date	2009-12-02T07:21:35	Date and time of file creation	ontime5	10631.329847157	Sum of GTIs [s]
revision	3	Processing version of data	ontime6	10631.288807154	Sum of GTIs [s]
			ontime7	10631.370887153	Sum of GTIs [s]
			ontime8	10631.206727155	Sum of GTIs [s]
			ontime9	10631.411927156	Sum of GTIs [s]
			l1events	180451	Number of level 1 events

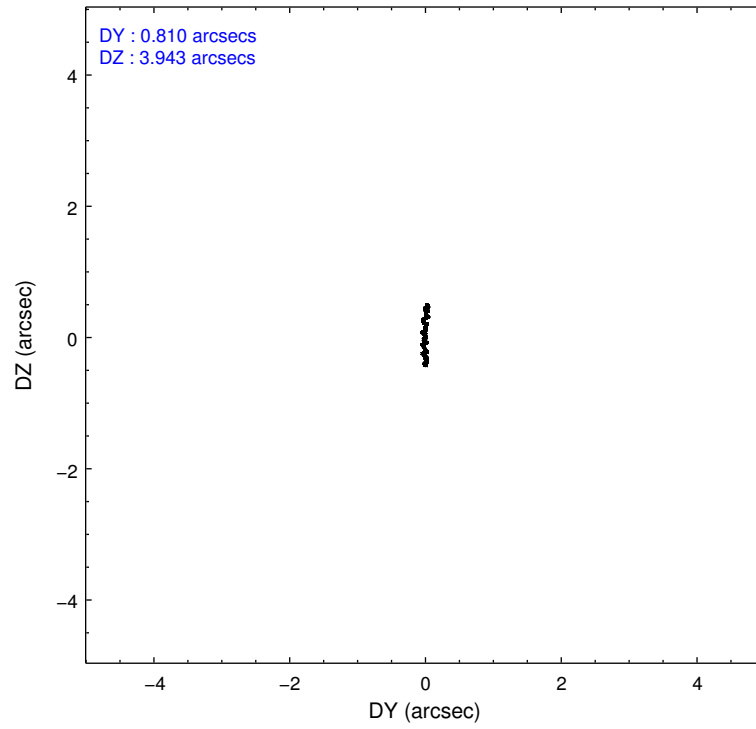
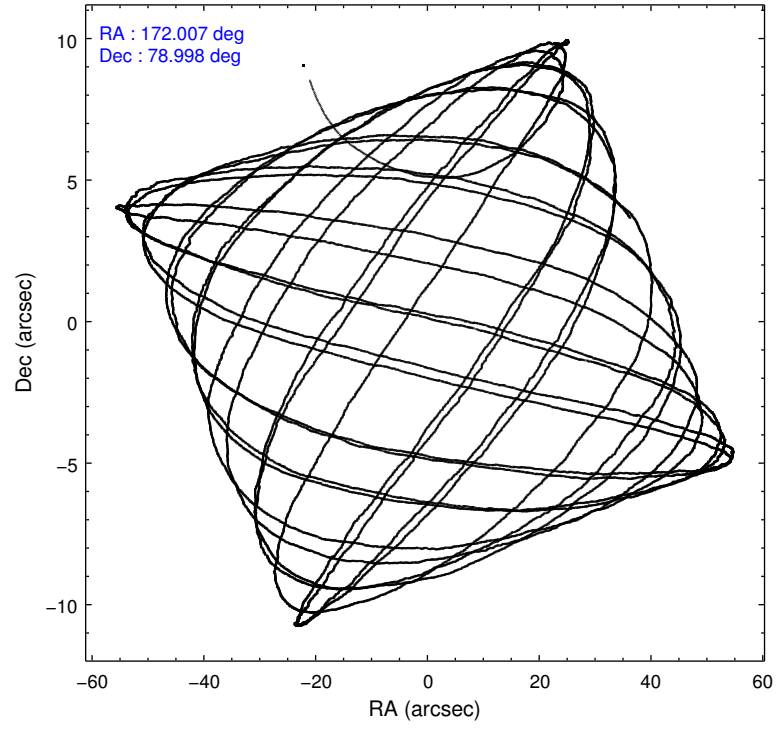
2.1.4 Events

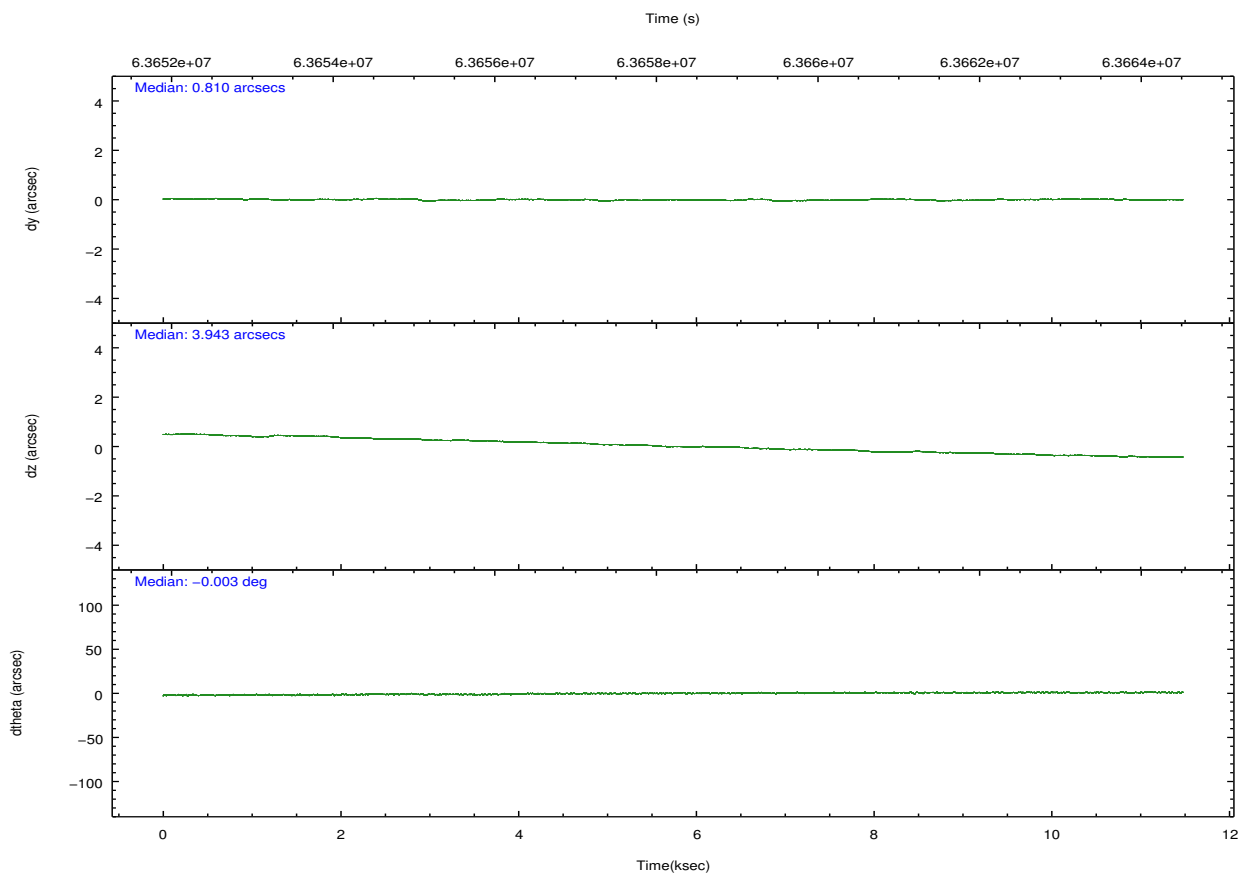
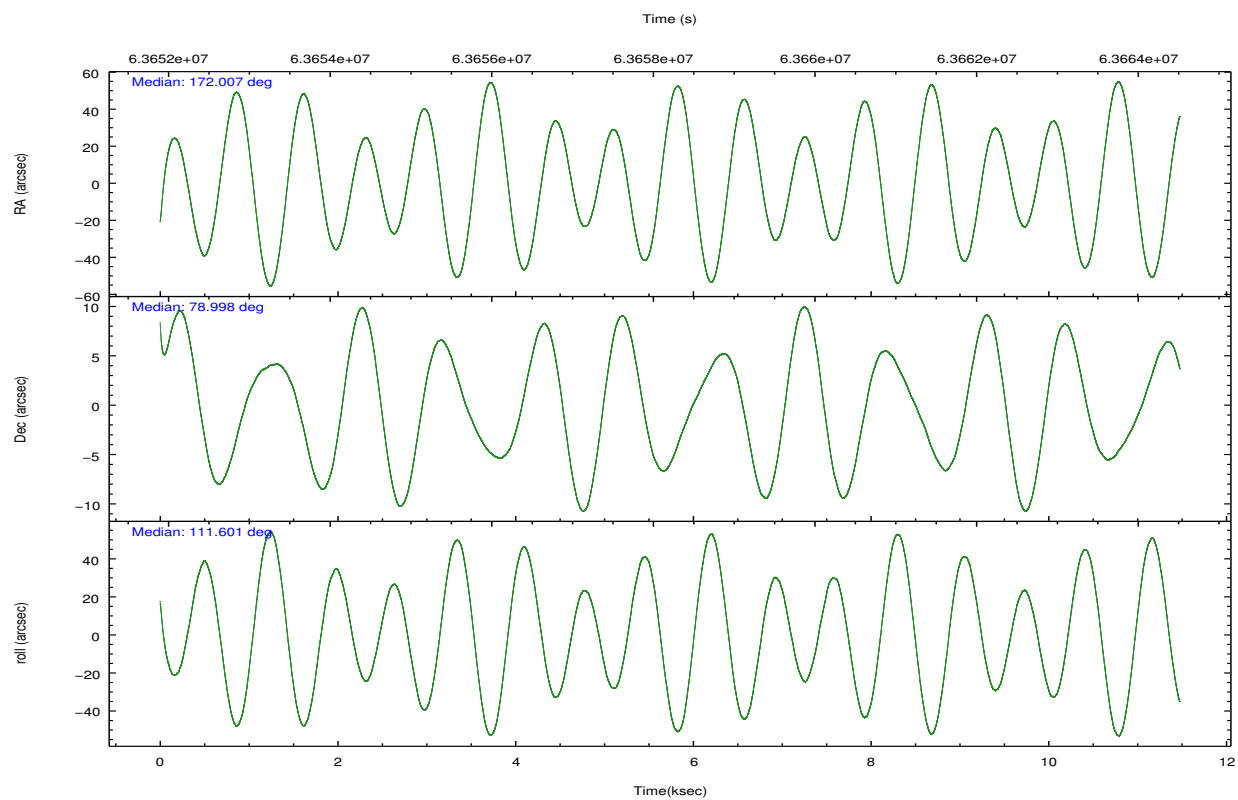
	ccd 4	ccd 5	ccd 6	ccd 7	ccd 8	ccd 9		ccd 4	ccd 5	ccd 6	ccd 7	ccd 8	ccd 9
level 1 events	30728	29812	28980	25343	36048	29540	grade 0 events	262	3157	404	767	914	350
rejected events	28128	16432	26387	15120	30647	26895		0%	10%	1%	3%	2%	1%
rejected %	91%	55%	91%	59%	85%	91%	grade 1 events	5	31	3	9	10	3
								0%	0%	0%	0%	0%	0%
							grade 2 events	1135	2303	936	2202	1653	1015
								3%	7%	3%	8%	4%	3%
							grade 3 events	275	496	268	771	502	284
								0%	1%	0%	3%	1%	0%
							grade 4 events	250	492	287	686	454	262
								0%	1%	0%	2%	1%	0%
							grade 5 events	294	984	410	1425	564	463
								0%	3%	1%	5%	1%	1%
							grade 6 events	680	6936	699	5800	1879	734
								2%	23%	2%	22%	5%	2%
							grade 7 events	27827	15413	25973	13683	30072	26429
								90%	51%	89%	53%	83%	89%

2.2 Compared Parameters

Parameter	Planned	Actual	Parameter	Planned	Actual
Instrument	ACIS	ACIS	Obspar format version number	6	6
Detector	ACIS-456789	ACIS-456789	Obspar file type	PREDICTED	ACTUAL
Grating	NONE	NONE	Obspar update status	NONE	UPDATED
Data mode	VFAINT	VFAINT	Number of optional ACIS chips dropped	0	0
Observation mode	POINTING	POINTING	On-chip summing requested	N	N
Pointing RA	172.118702	172.0058457605242	Subarray requested	CUSTOM	1/4
Pointing Dec	78.980651	78.99785811216178	Subarray start row	383	383
Pointing Roll	111.341249	111.6086583606664	Subarray row count	256	256
SIM focus pos (mm)	-0.684267	-0.6828225247311905	Alternating exposures requested	N	N
SIM defocus (mm)	0	0.001444936568705701	Primary exposure time	0.000000	1.1
SIM translation stage pos (mm)	-190.132523	-190.1425803651734			
SIM translation stage offset (mm)	0	0.01005778216563158			
Observation start time	63652945.184000	63651680.53141			
Observation start date	2000-01-07T17:21:21	2000-01-07T17:01:20			
Observation end time	63663945.184000	63664300.844368			
Observation end date	2000-01-07T20:24:41	2000-01-07T20:31:40			
Read mode	TIMED	TIMED			

2.3 Aspect



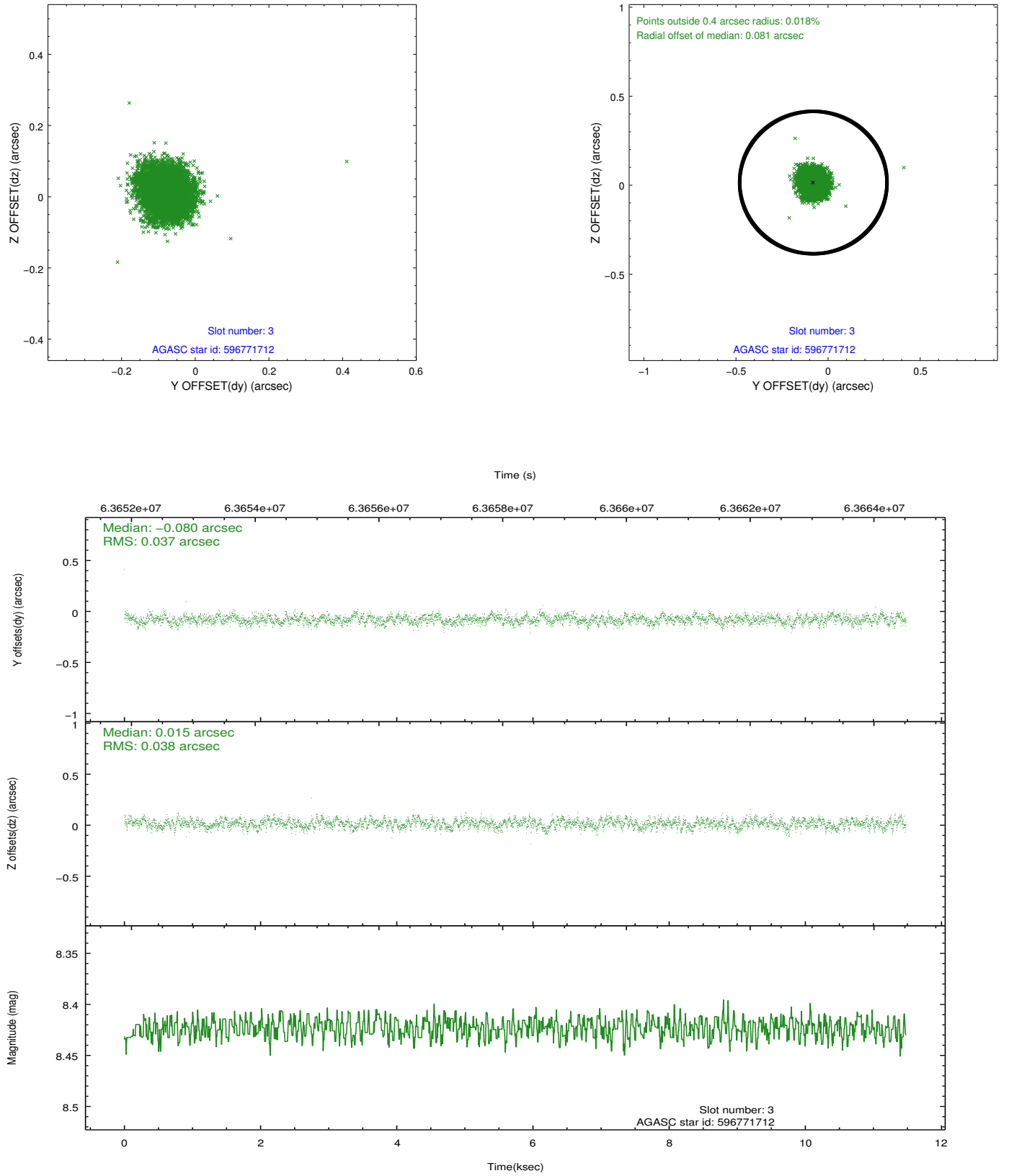


Slot Statistics

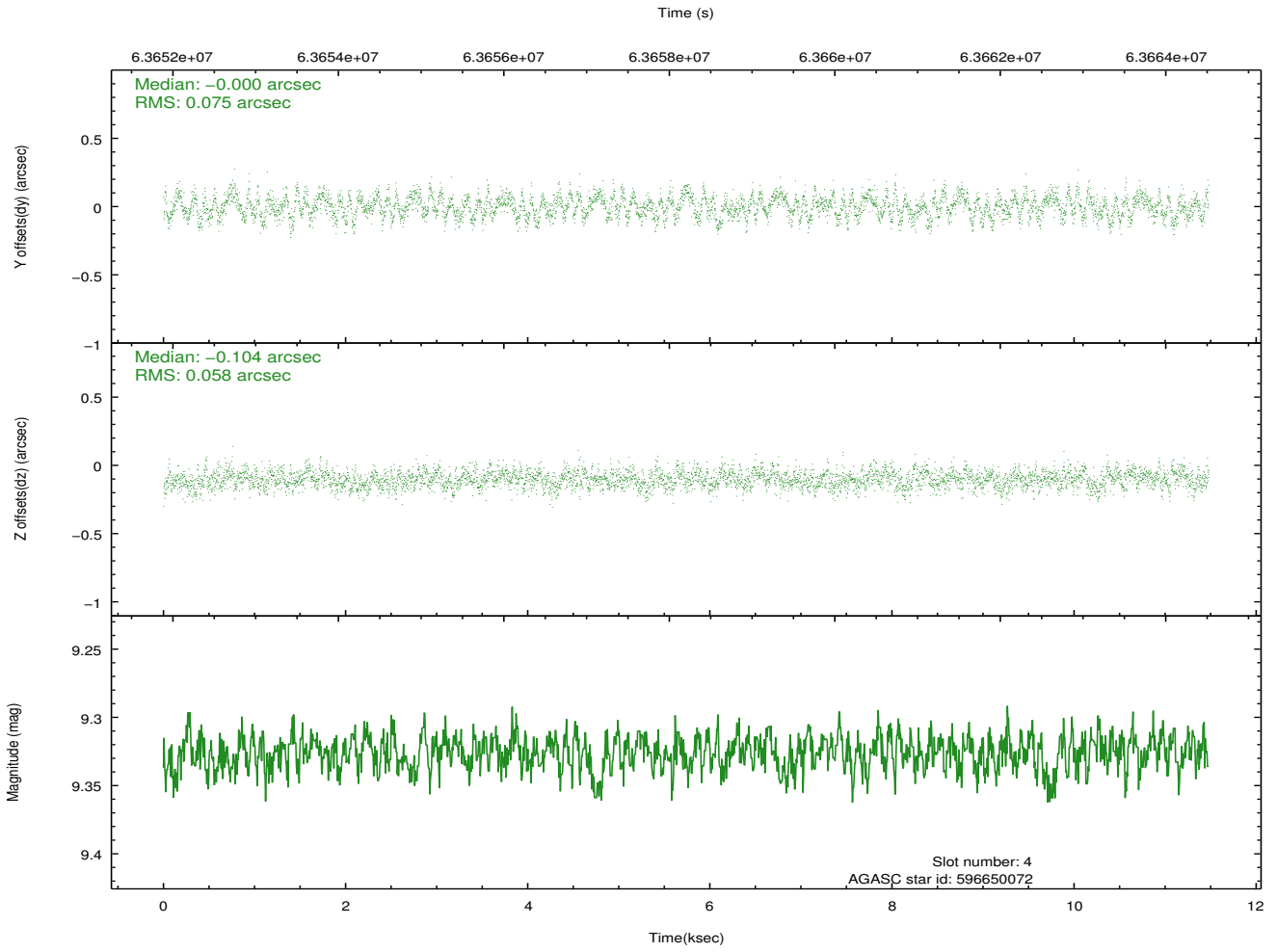
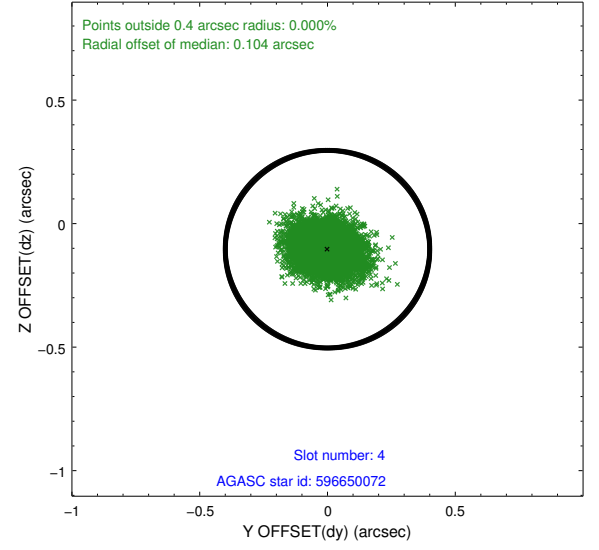
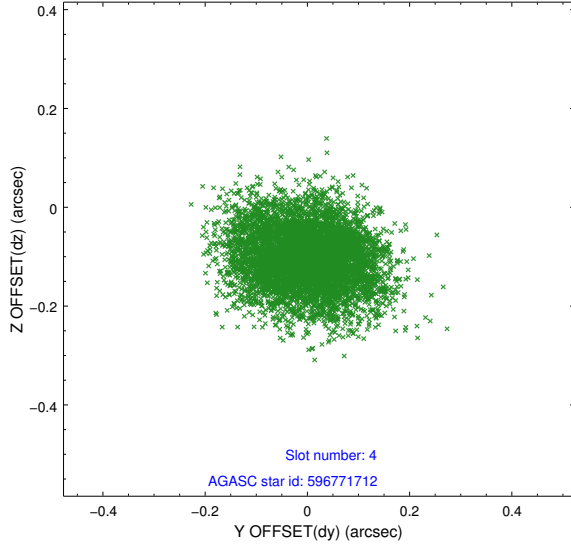
slot	status	id	mag	n_pts	med_dy	med_dz	dr1	dr2	ra	dec	mean_y	mean_z
0	FID	ACIS-S-3	7.36	5600	0.010	-0.006	0.022	0.030	0.000000	0.000000	59.77	-1854.07
1	FID	ACIS-S-4	7.21	5600	-0.003	-0.000	0.008	0.012	0.000000	0.000000	2159.97	183.26
2	FID	ACIS-S-5	7.24	5600	-0.033	0.017	0.016	0.024	0.000000	0.000000	-1806.08	177.23
3	GUIDE	596771712	8.42	5598	-0.080	0.015	0.057	0.089	173.851603	79.348478	830.31	-1561.55
4	GUIDE	596650072	9.33	5593	-0.000	-0.104	0.103	0.163	170.208053	78.165209	-2199.34	2373.45
5	GUIDE	596771296	9.42	5595	0.068	0.056	0.083	0.135	174.006618	78.515779	-2030.60	-658.56
6	GUIDE	596771344	9.76	5595	-0.025	0.054	0.100	0.162	174.119213	79.472528	1191.88	-1877.60
7	GUIDE	596642344	9.82	5596	0.038	-0.020	0.091	0.147	169.813005	79.009239	701.22	1424.85

2.4 Star Slots

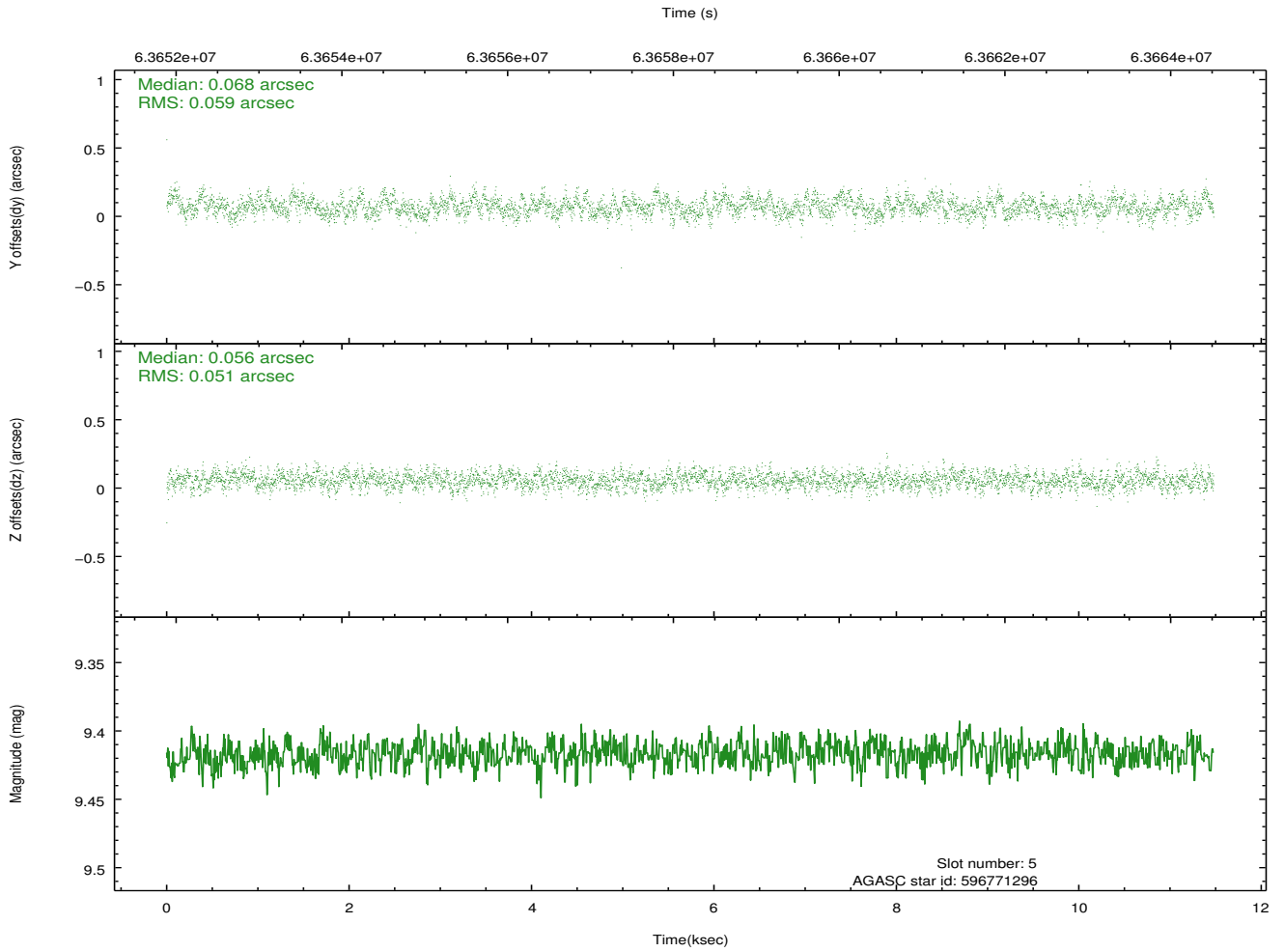
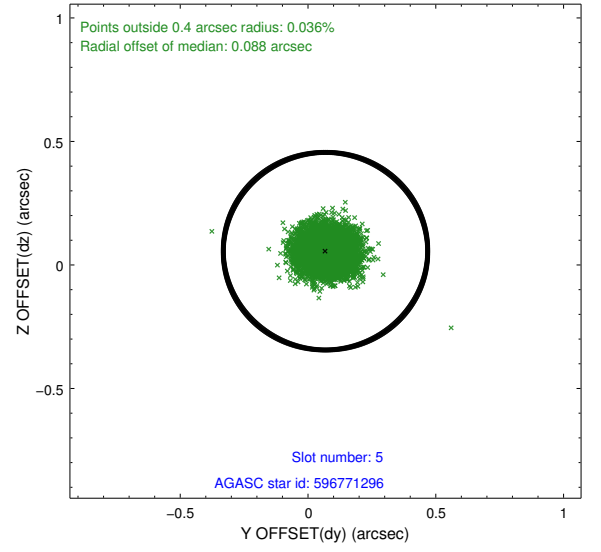
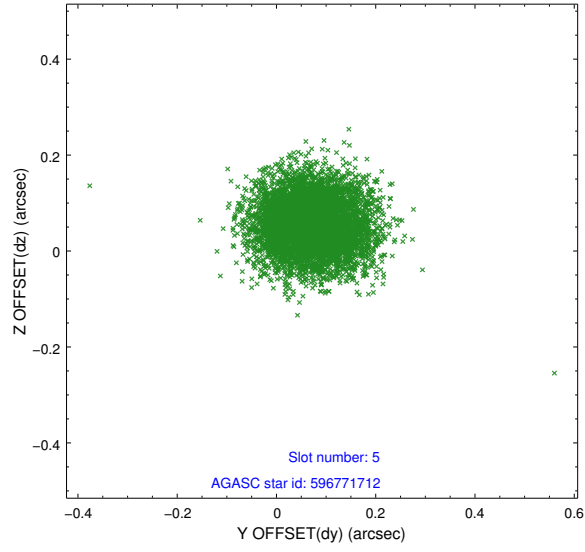
2.4.1 Slot 3



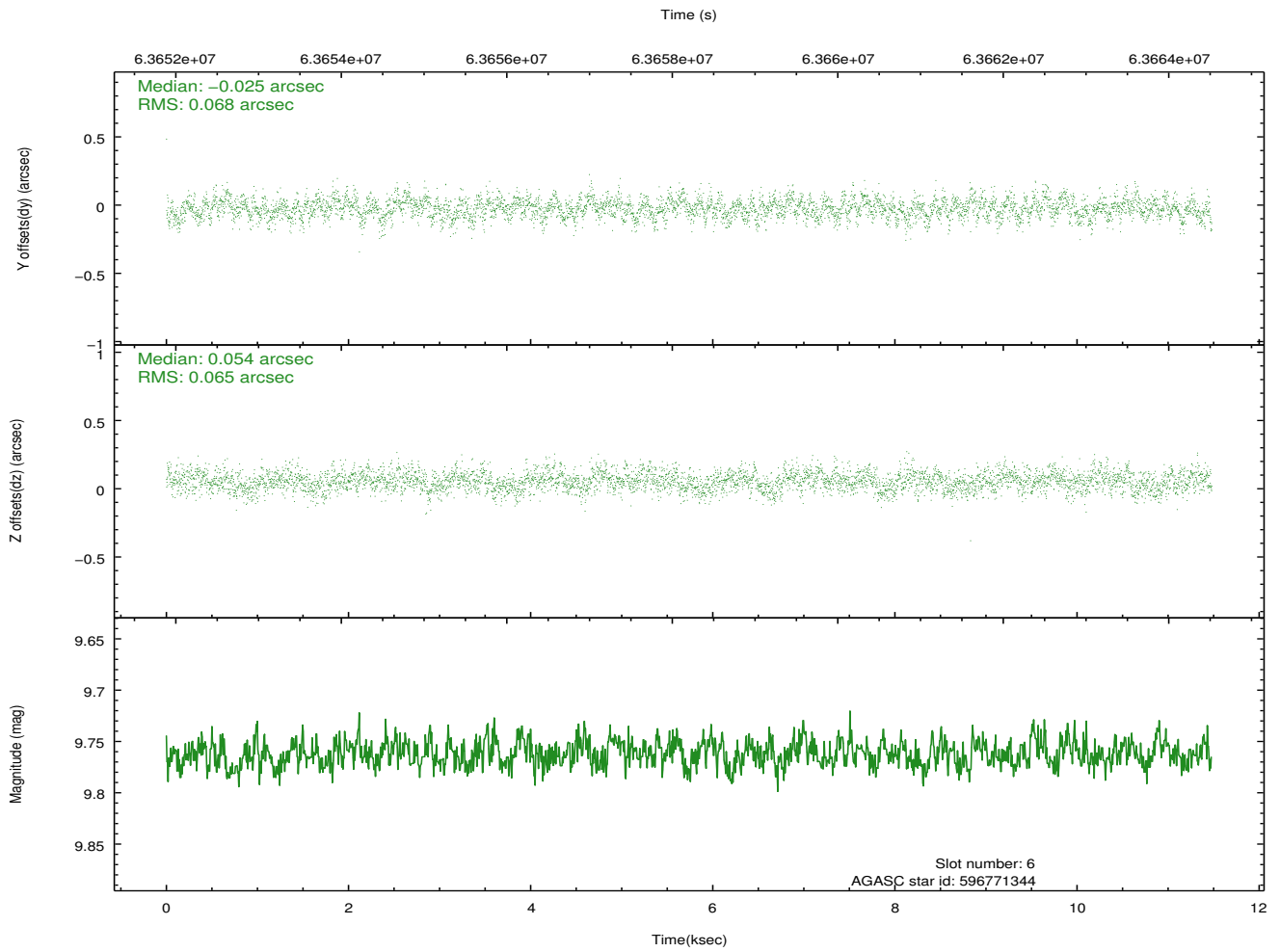
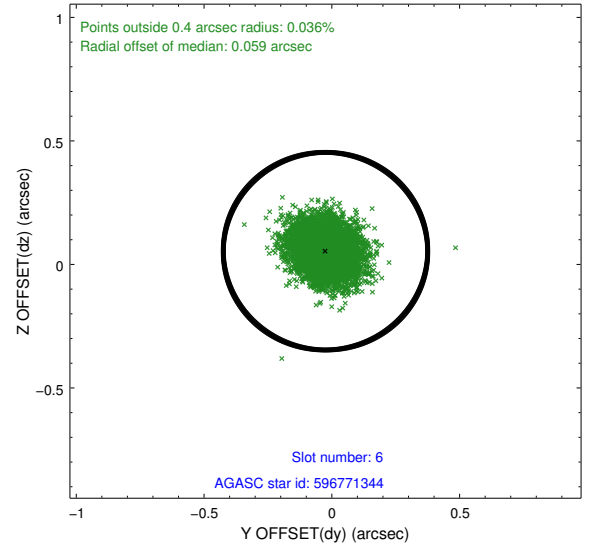
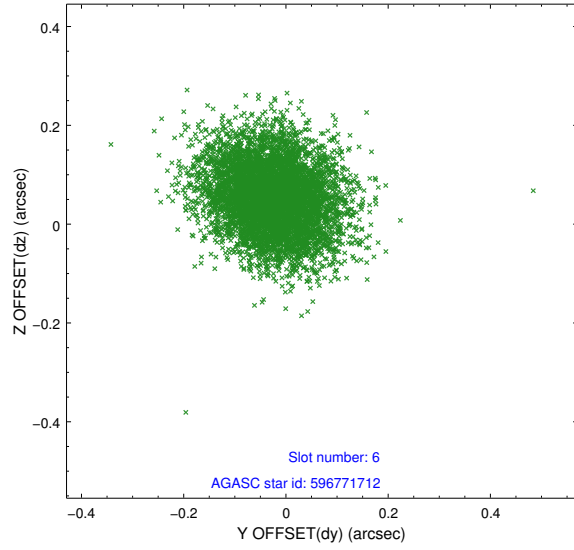
2.4.2 Slot 4



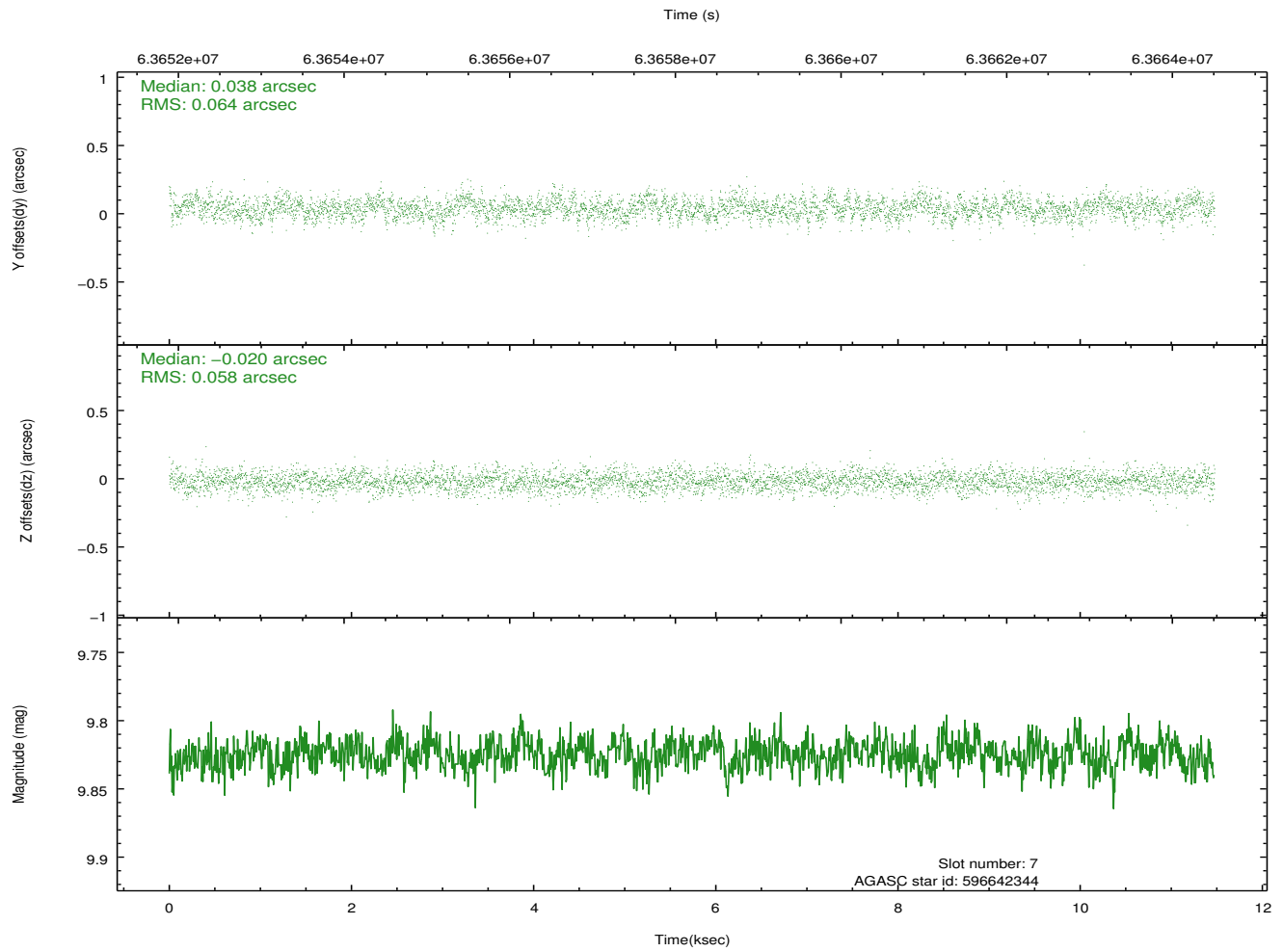
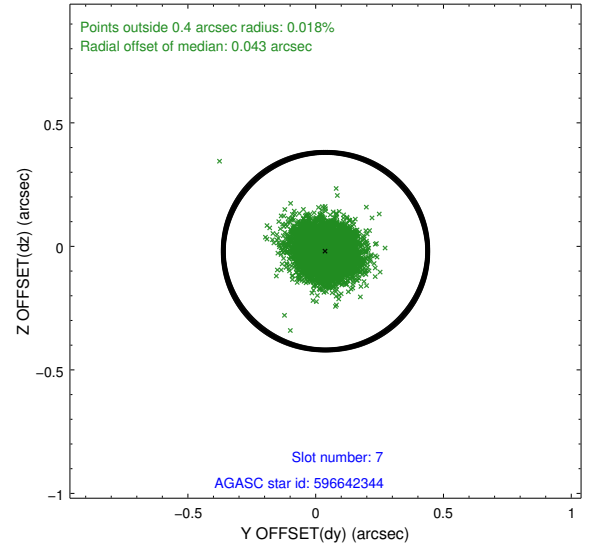
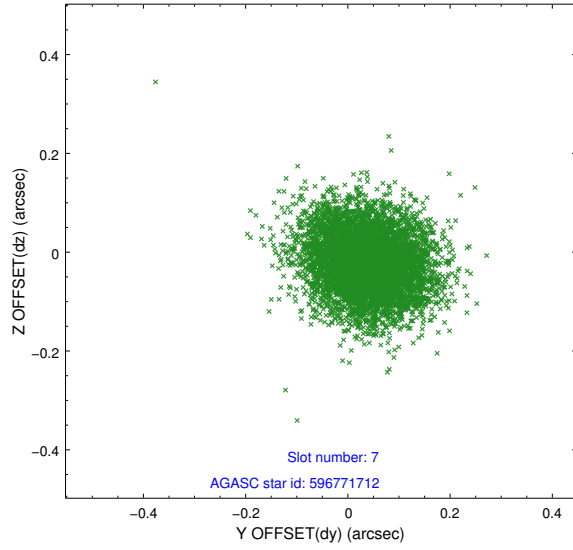
2.4.3 Slot 5



2.4.4 Slot 6

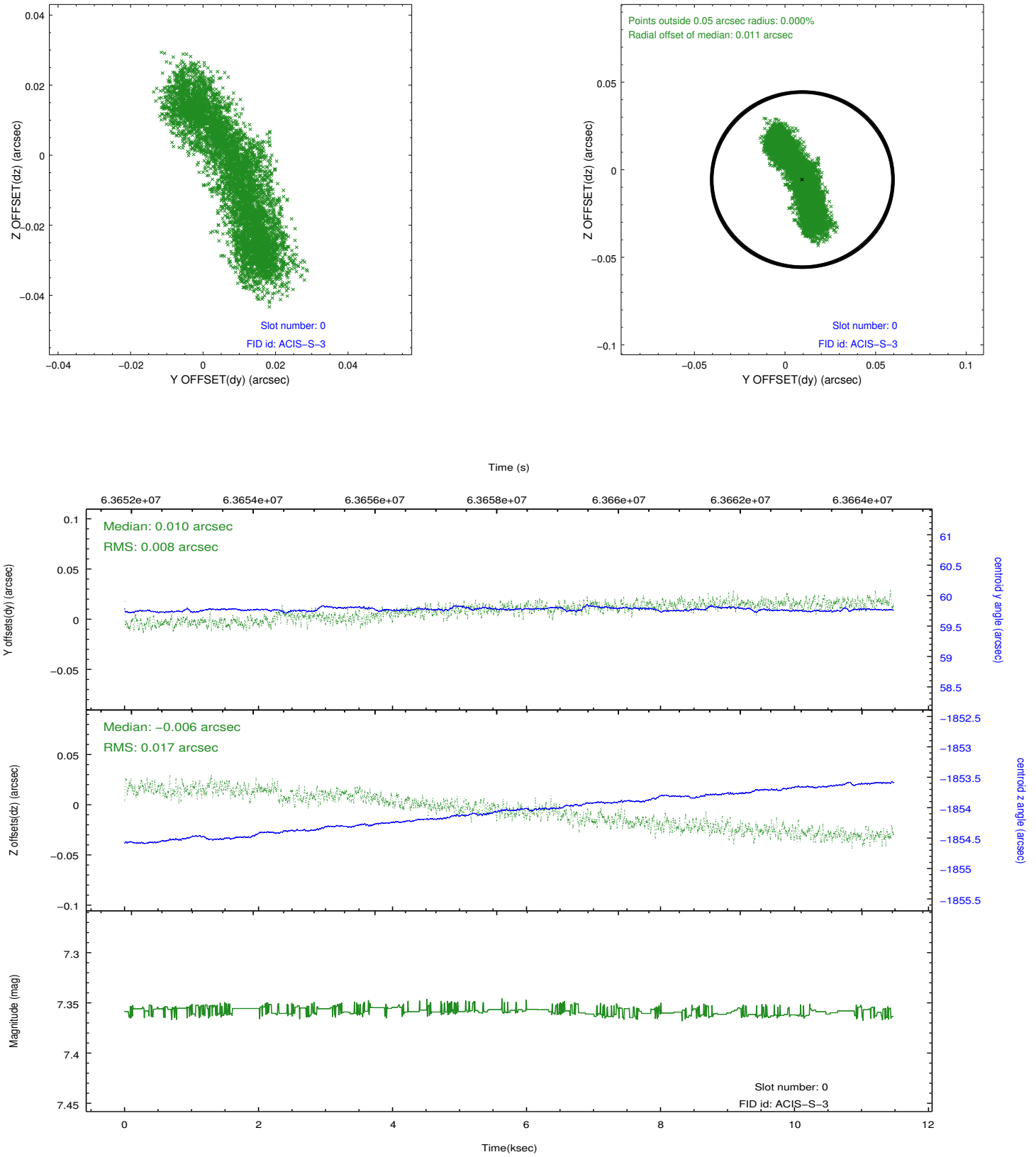


2.4.5 Slot 7

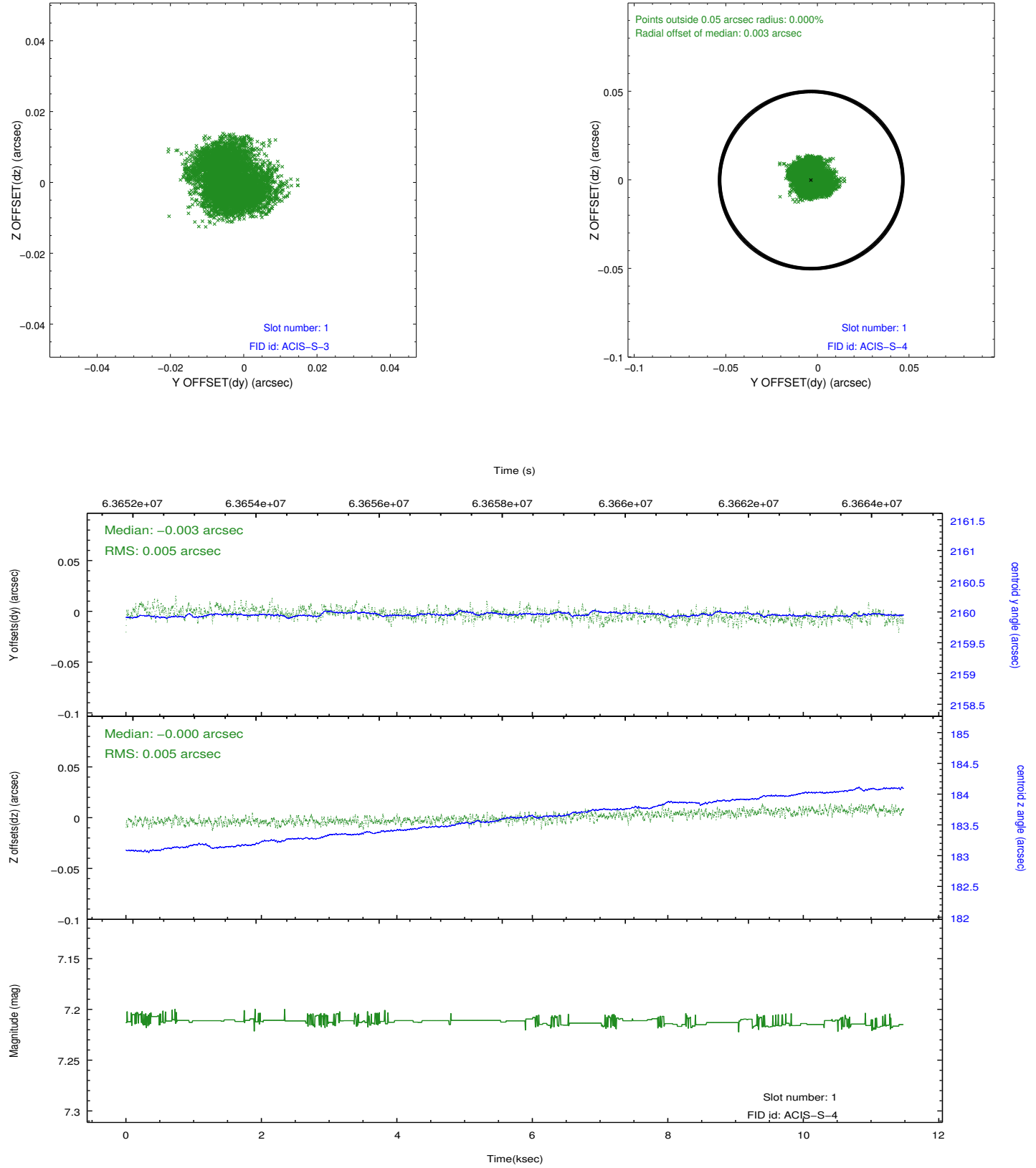


2.5 FID Slots

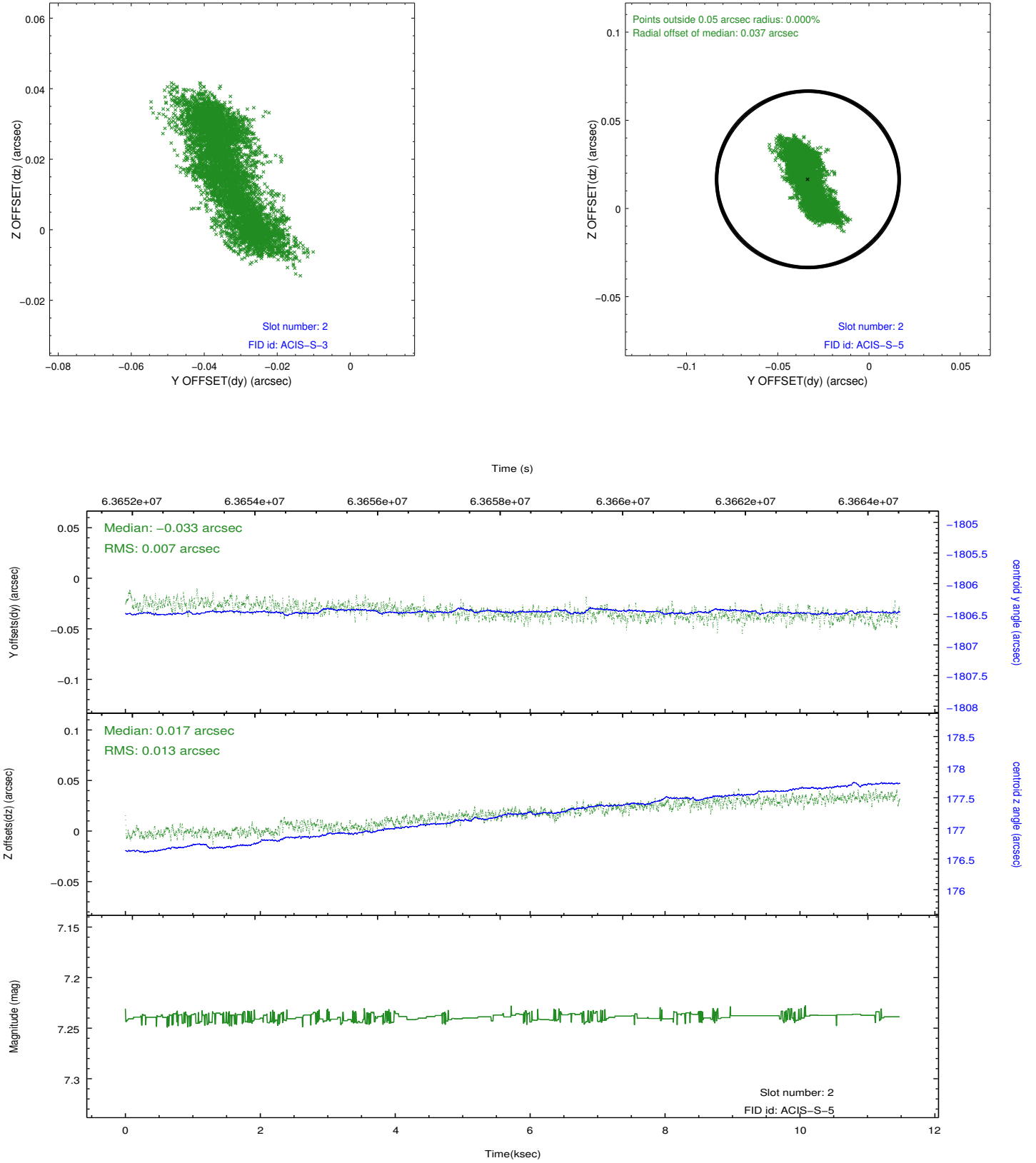
2.5.1 Slot 0



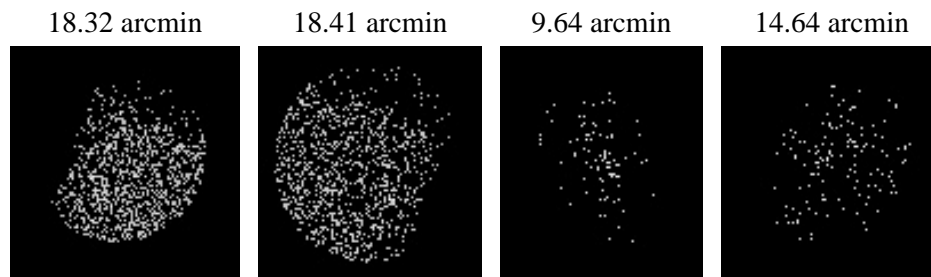
2.5.2 Slot 1



2.5.3 Slot 2



3 Point Sources



A Summary

A.1 Status

V&V Scientist	Beth Sundheim
V&V Date (YYYY-MM-DD)	2009.12.08
V&V Edition	1
V&V Disposition and Status	OK
V&V Charge Time	10.631

A.2 Comments

Focal plane temperature is warmer than -118.7 C degrees during the entire observation. This temperature is the upper limit of the verified ACIS calibration for the front-illuminated chips. The focal plane temperature is also warmer than -116.7 degrees C for the entire observation. This temperature is the upper limit of the verified ACIS calibration for the back-illuminated chips. The ACIS spectral response calibration is less accurate at these warmer temperatures than it is at -119.7 C. Users whose science objectives depend on the most accurate spectral response (ie: fitting line-rich spectra) may notice an effect. Users whose science objectives do not depend on the most accurate spectral response should not notice an effect.