

V&V Reference Report

L2 ASCDS Version : 8.4.4

Observation 8091 - L2 Version 2
Chandra X-Ray Center

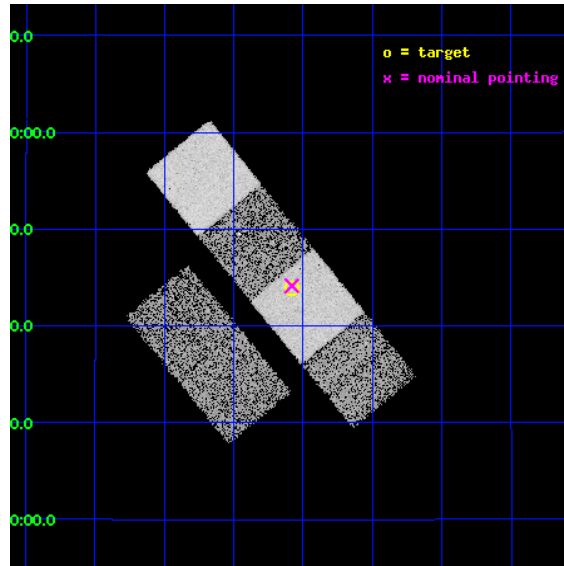
L2 Processing Date : May 4 2012

Contents

1	Front	2
2	OBI	3
2.1	OBI	3
2.1.1	Images	3
2.1.2	Bias	3
2.1.3	Parameters	4
2.1.4	Events	4
2.2	Compared Parameters	5
2.3	Aspect	6
2.4	Star Slots	9
2.4.1	Slot 3	9
2.4.2	Slot 4	10
2.4.3	Slot 5	11
2.4.4	Slot 6	12
2.4.5	Slot 7	13
2.5	FID Slots	14
2.5.1	Slot 0	14
2.5.2	Slot 1	15
2.5.3	Slot 2	16
A	Summary	17
A.1	Status	17
A.2	Comments	17

1 Front

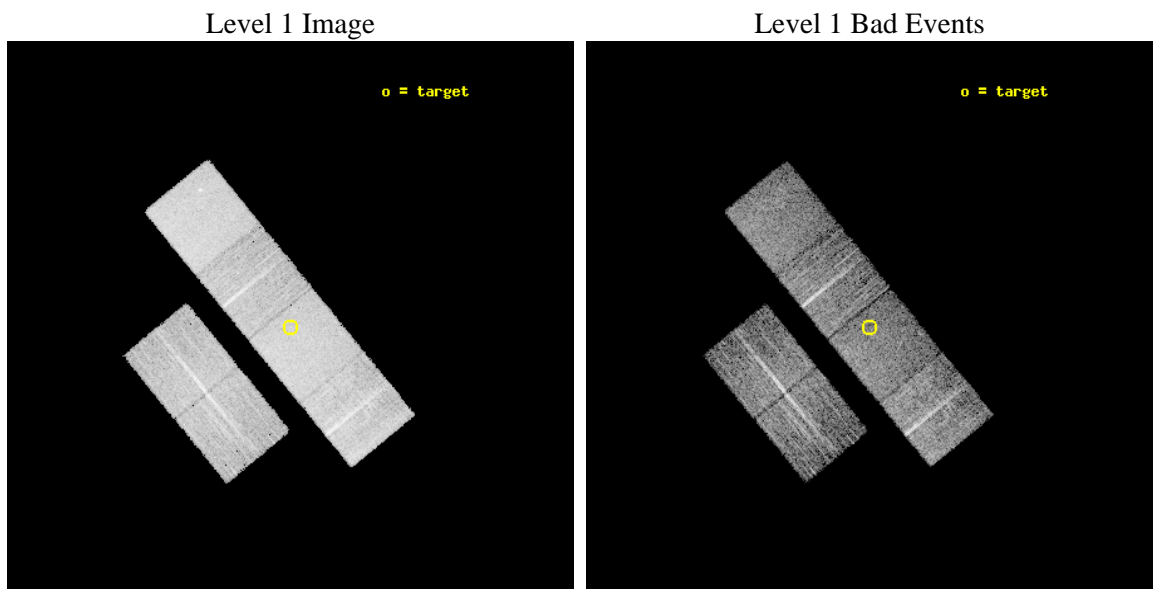
seq_num	900632	Sequence number
obs_id	8091	Observation id
title	The Duty Cycle of Supermassive Black Holes: X-raying Virgo	Proposa
observer	Prof Tommaso Treu	Principal investigator
object	1779	Source name
dtycle	0	
cycle	P	events from which exps? Prim/Second/Both
ra_targ	189.769583	Observer's specified target RA [deg]
dec_targ	14.730972	Observer's specified target Dec [deg]
ra_nom	189.77027942662	Nominal RA [deg]
dec_nom	14.735812154394	Nominal Dec [deg]
roll_nom	50.66730643709	Nominal Roll [deg]
revision	2	Processing version of data
ontime	5158.3999808431	Sum of GTIs [s]
livetime	5093.0812142701	Livetime [s]
ontime2	5158.3999808431	Sum of GTIs [s]
ontime3	5158.3999808431	Sum of GTIs [s]
ontime5	5158.3999808431	Sum of GTIs [s]
ontime6	5158.3999808431	Sum of GTIs [s]
ontime7	5158.3999808431	Sum of GTIs [s]
ontime8	5155.1590105295	Sum of GTIs [s]
l2events	82547	Number of level 2 events



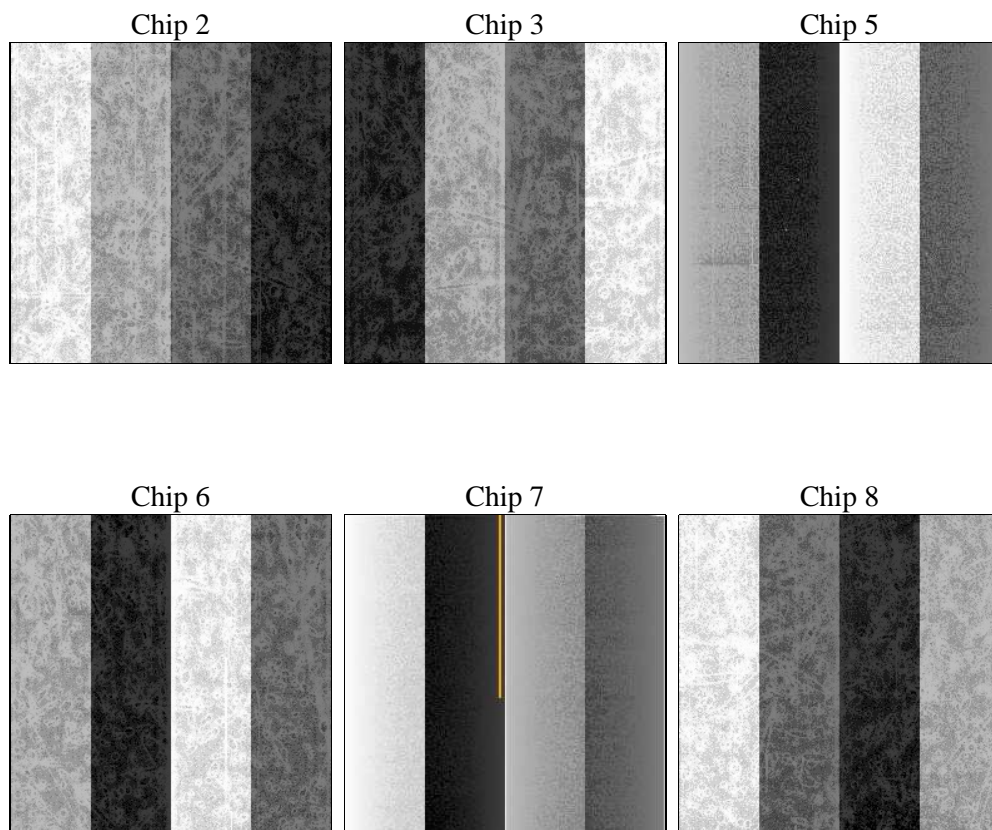
2 OBI

2.1 OBI

2.1.1 Images



2.1.2 Bias



2.1.3 Parameters

obi_num	0	Obi number	sched_exp_time	5400.000000	[s] Scheduled observation exposure time
ascdsver	8.4.4	Processing system revision	ontime	5158.3999808431	Sum of GTIs [s]
caldsver	4.4.9	 	ontime2	5158.3999808431	Sum of GTIs [s]
date	2012-05-04T13:43:46	Date and time of file creation	ontime3	5158.3999808431	Sum of GTIs [s]
revision	2	Processing version of data	ontime5	5158.3999808431	Sum of GTIs [s]
			ontime6	5158.3999808431	Sum of GTIs [s]
			ontime7	5158.3999808431	Sum of GTIs [s]
			ontime8	5155.1590105295	Sum of GTIs [s]
			l1events	356598	Number of level 1 events

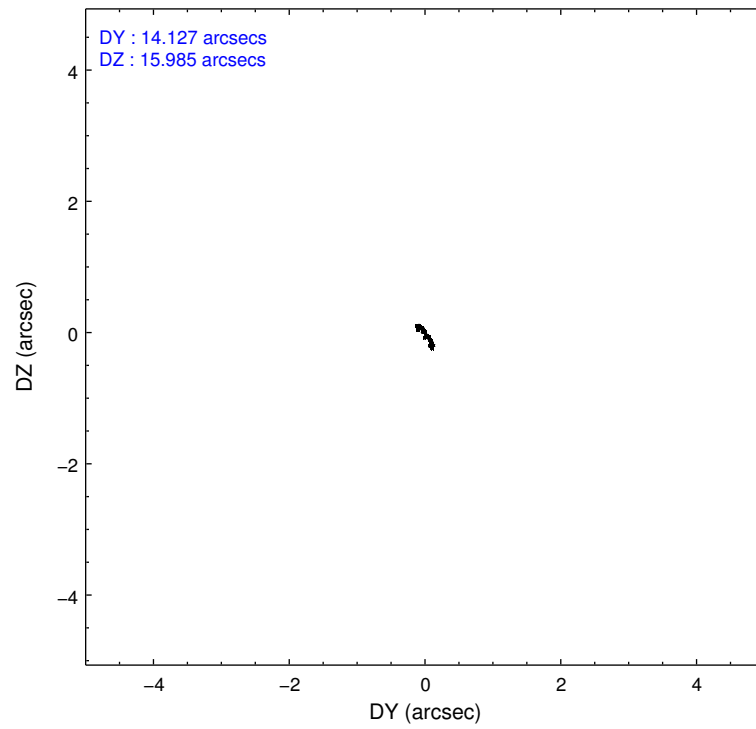
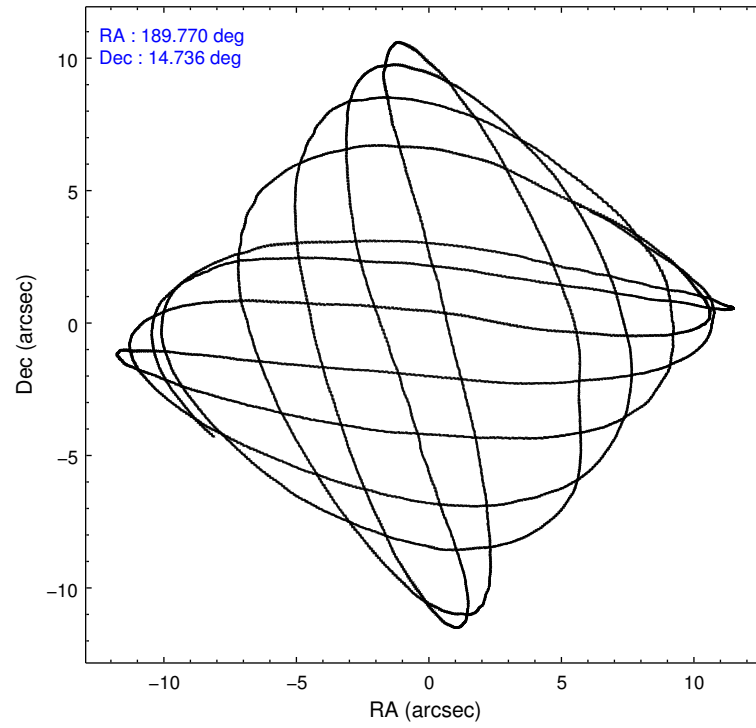
2.1.4 Events

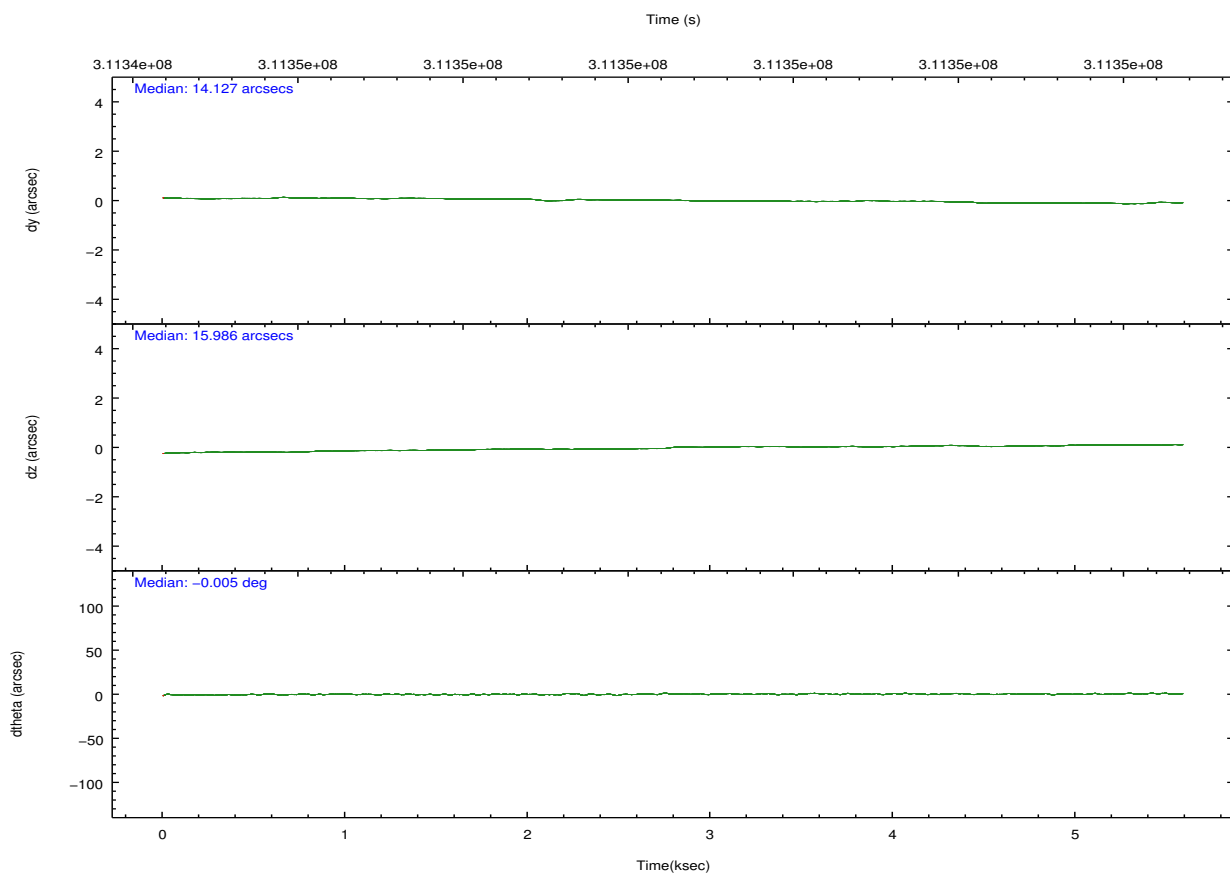
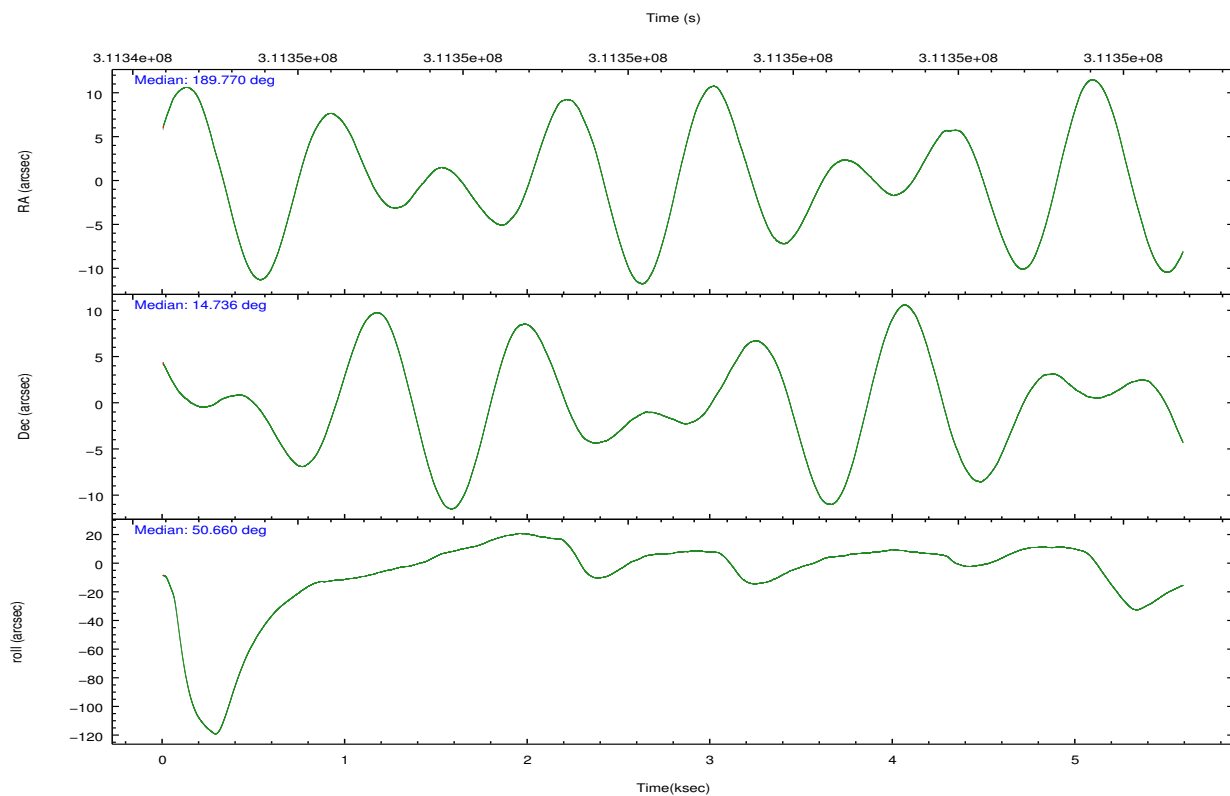
	ccd 2	ccd 3	ccd 5	ccd 6	ccd 7	ccd 8		ccd 2	ccd 3	ccd 5	ccd 6	ccd 7	ccd 8
level 1 events	49002	46730	75155	50592	69226	65893	grade 0 events	2649	2555	2283	2421	2577	4437
rejected events	43106	41025	41269	44598	40296	51809		5%	5%	3%	4%	3%	6%
rejected %	87%	87%	54%	88%	58%	78%	grade 1 events	27	35	147	22	84	62
								0%	0%	0%	0%	0%	0%
							grade 2 events	1252	1129	10557	1297	5986	3181
								2%	2%	14%	2%	8%	4%
							grade 3 events	517	563	1307	584	2377	1440
								1%	1%	1%	1%	3%	2%
							grade 4 events	547	520	1262	542	2339	1405
								1%	1%	1%	1%	3%	2%
							grade 5 events	1981	2310	5338	2284	6333	3116
								4%	4%	7%	4%	9%	4%
							grade 6 events	934	943	18494	1153	15674	3661
								1%	2%	24%	2%	22%	5%
							grade 7 events	41095	38675	35767	42289	33856	48591
								83%	82%	47%	83%	48%	73%

2.2 Compared Parameters

Parameter	Planned	Actual	Parameter	Planned	Actual
Instrument	ACIS	ACIS	Obspar format version number	7	7
Detector	ACIS-235678	ACIS-235678	Obspar file type	PREDICTED	ACTUAL
Grating	NONE	NONE	Obspar update status	NONE	UPDATED
Data mode	FAINT	FAINT	CCD I0 on	N	N
Observation mode	POINTING	POINTING	CCD I1 on	N	N
[deg] Pointing RA	189.766054	189.7702794266153	CCD I2 on	O1	Y
[deg] Pointing Dec	14.708738	14.73581215439412	CCD I3 on	O2	Y
[deg] Pointing Roll	50.511483	50.6673064370898	CCD S0 on	N	N
[mm] SIM focus pos	-0.684267	-0.6828225247311905	CCD S1 on	O3	Y
[mm] SIM defocus	0	0.001444936568705701	CCD S2 on	Y	Y
[mm] SIM translation stage pos	-190.132523	-190.1425803651734	CCD S3 on	Y	Y
[mm] SIM translation stage offset	0	0.01005778216563158	CCD S4 on	O4	Y
[s] Observation start time (MET)	311345664.184000	311345253.63795	CCD S5 on	N	N
Observation start date	2007-11-13T12:53:19	2007-11-13T12:47:33	Number of optional ACIS chips dropped	0	0
[s] Observation end time (MET)	311351064.184000	311351791.60077	On-chip summing requested	N	N
Observation end date	2007-11-13T14:23:19	2007-11-13T14:36:31	Subarray requested	NONE	NONE
Read mode	TIMED	TIMED	Alternating exposures requested	N	N
			[s] Primary exposure time	0.000000	3.2

2.3 Aspect



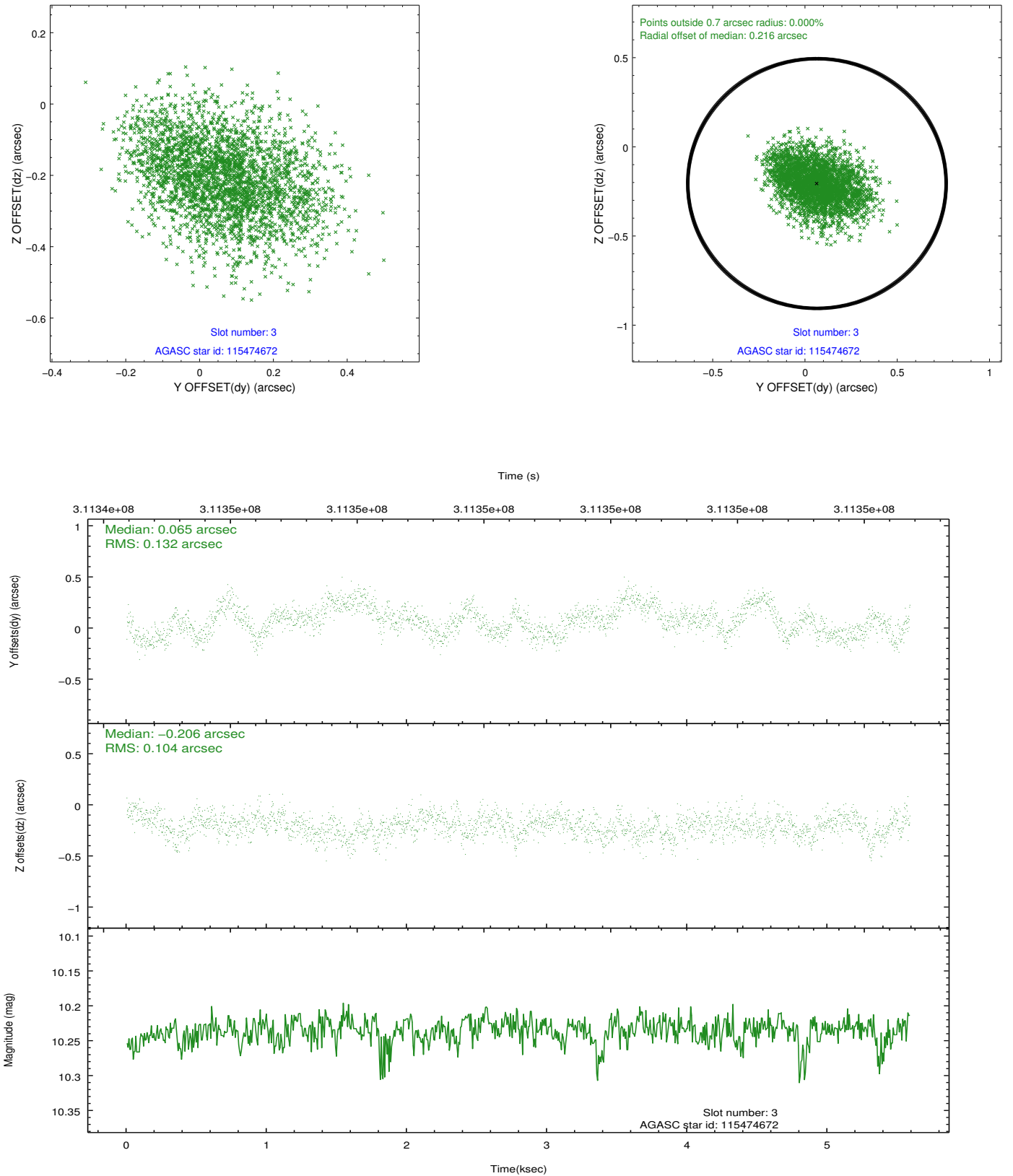


Slot Statistics

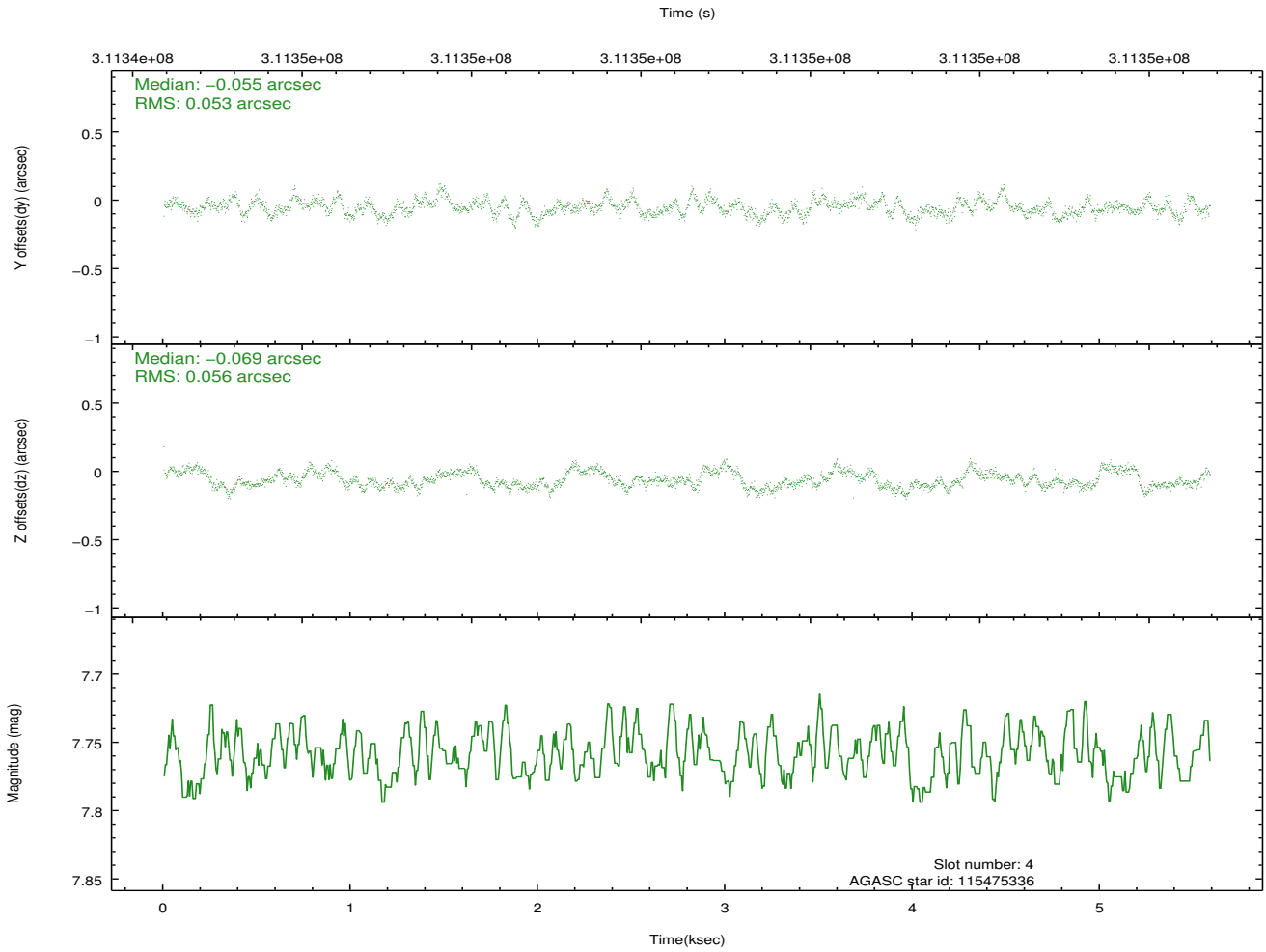
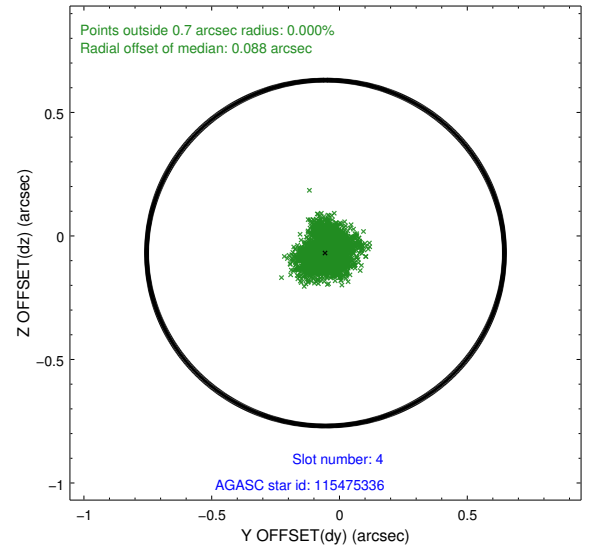
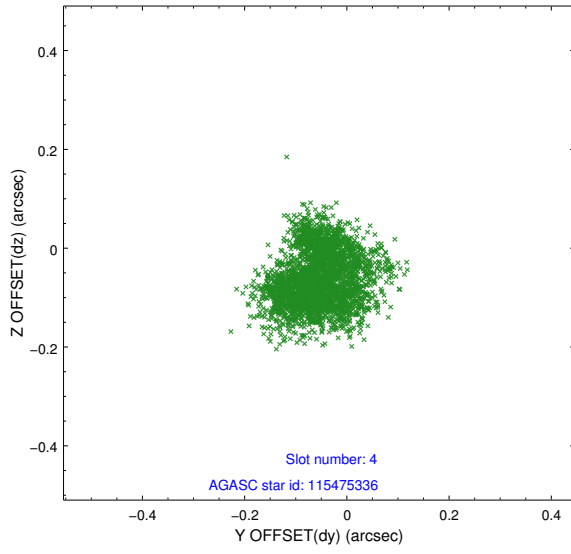
slot	status	id	mag	n_pts	med_dy	med_dz	dr1	dr2	ra	dec	mean_y	mean_z
0	FID	ACIS-S-1	7.18	1363	0.085	-0.092	0.008	0.016	0.000000	0.000000	929.04	-1733.02
1	FID	ACIS-S-5	7.22	1363	-0.158	0.043	0.007	0.013	0.000000	0.000000	-1819.60	163.56
2	FID	ACIS-S-6	7.32	1363	0.051	0.060	0.008	0.012	0.000000	0.000000	393.40	808.75
3	GUIDE	115474672	10.24	2721	0.065	-0.206	0.182	0.287	189.254999	14.985564	-359.80	2006.28
4	GUIDE	115475336	7.76	2726	-0.055	-0.069	0.084	0.127	189.606179	14.872414	100.83	804.97
5	GUIDE	115480872	10.27	2630	0.289	0.341	0.163	0.254	189.711359	13.978003	-2150.65	-1525.20
6	GUIDE	189535880	10.08	2726	0.002	-0.057	0.202	0.340	190.166551	15.215140	2291.86	85.71
7	GUIDE	189539496	9.22	2721	-0.274	-0.004	0.093	0.145	189.792861	15.435545	2079.03	1592.45

2.4 Star Slots

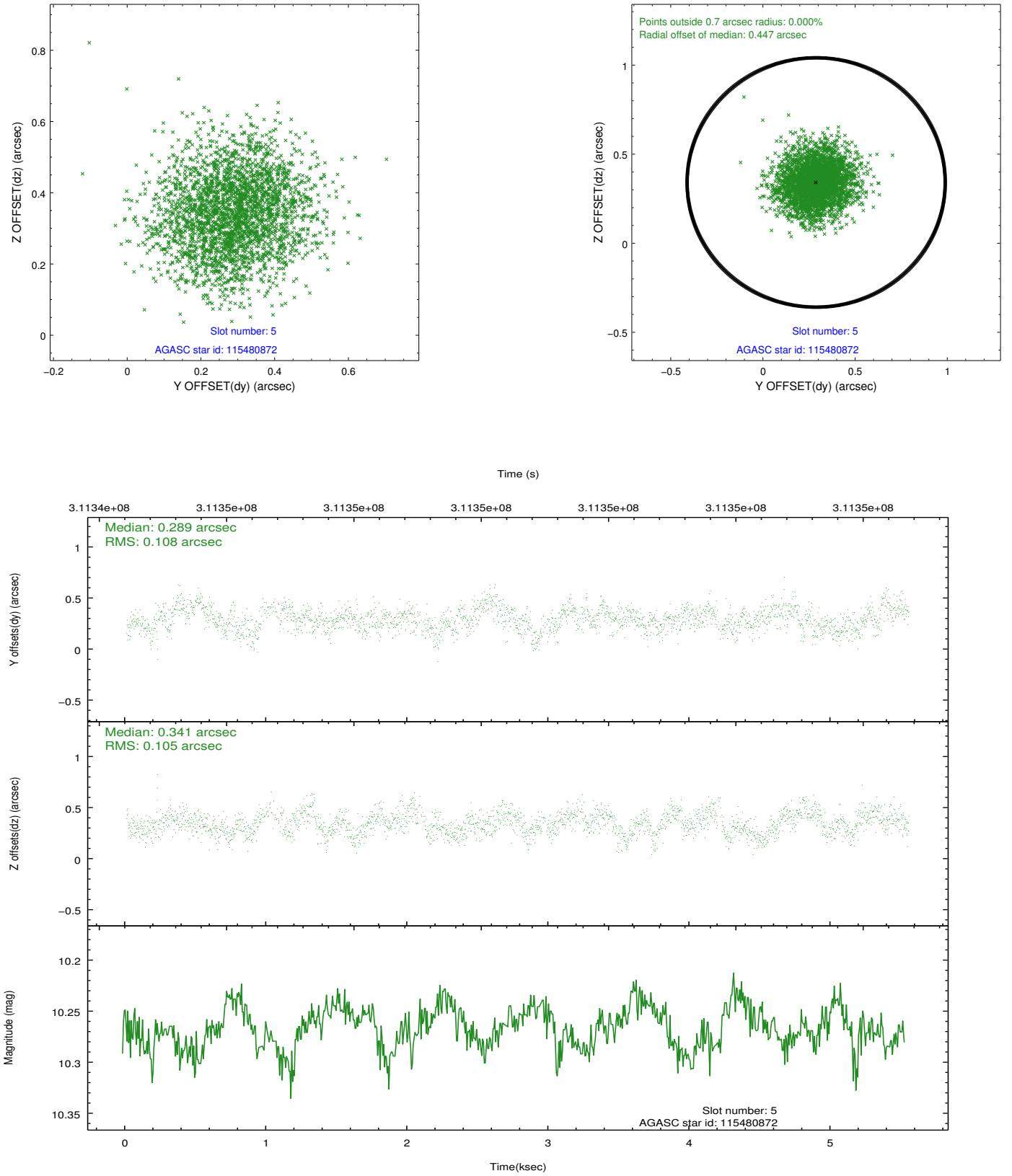
2.4.1 Slot 3



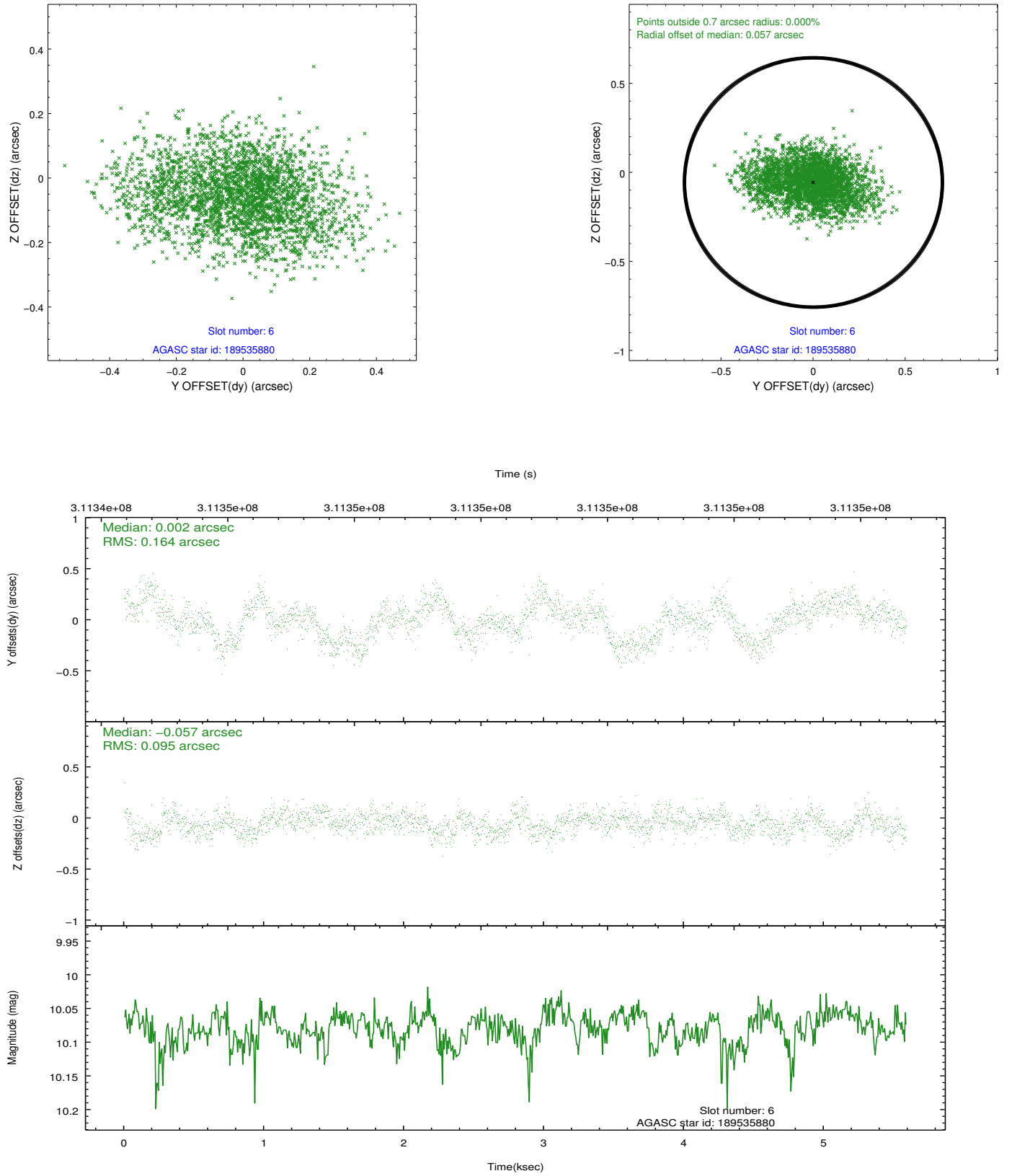
2.4.2 Slot 4



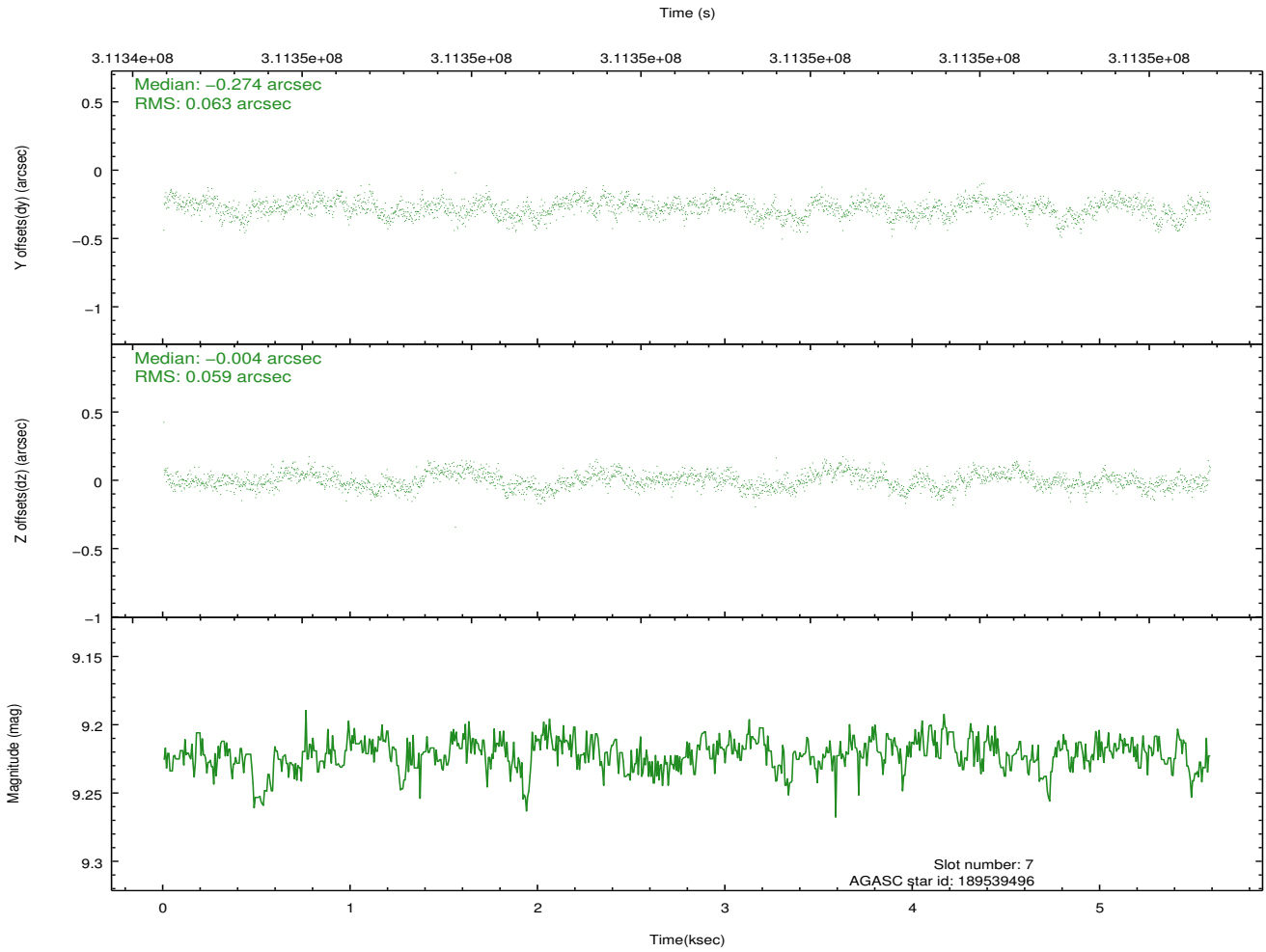
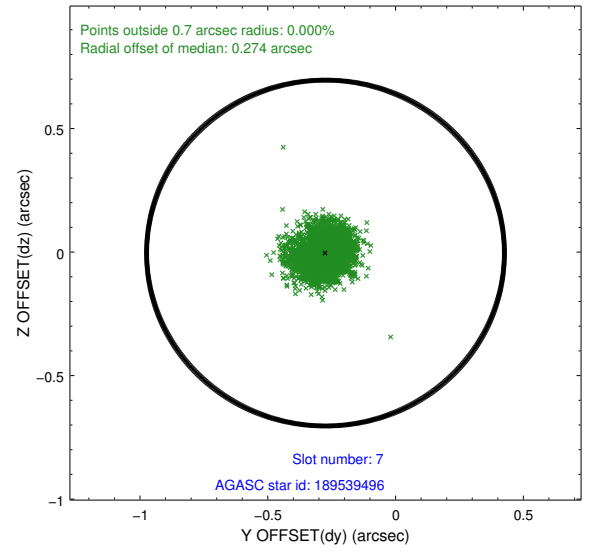
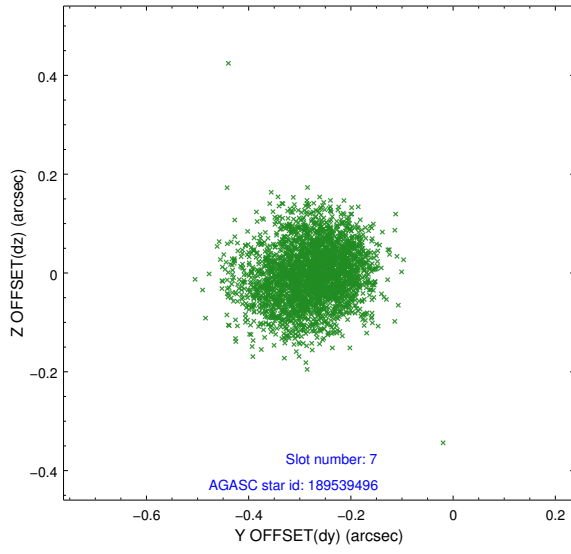
2.4.3 Slot 5



2.4.4 Slot 6

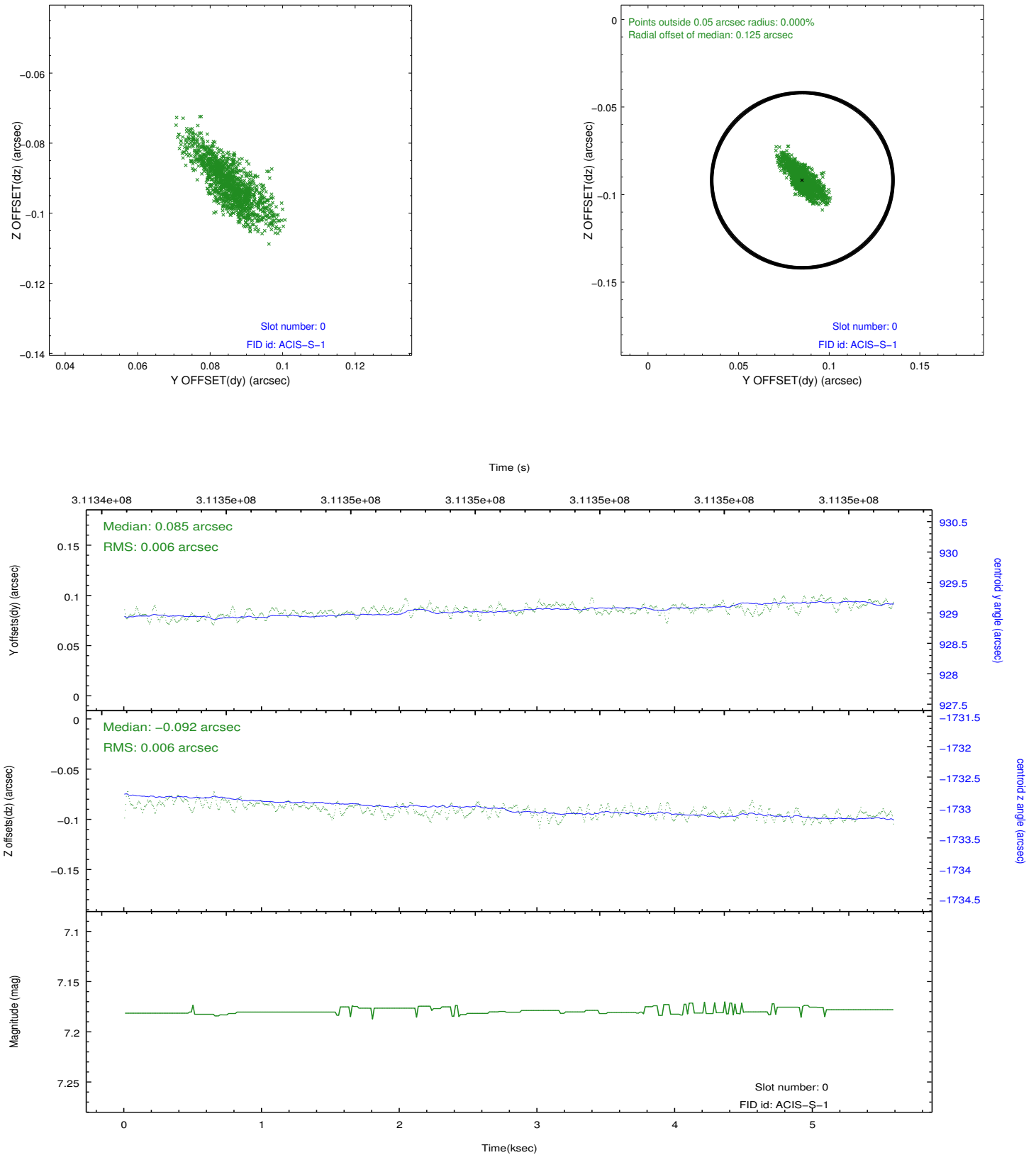


2.4.5 Slot 7

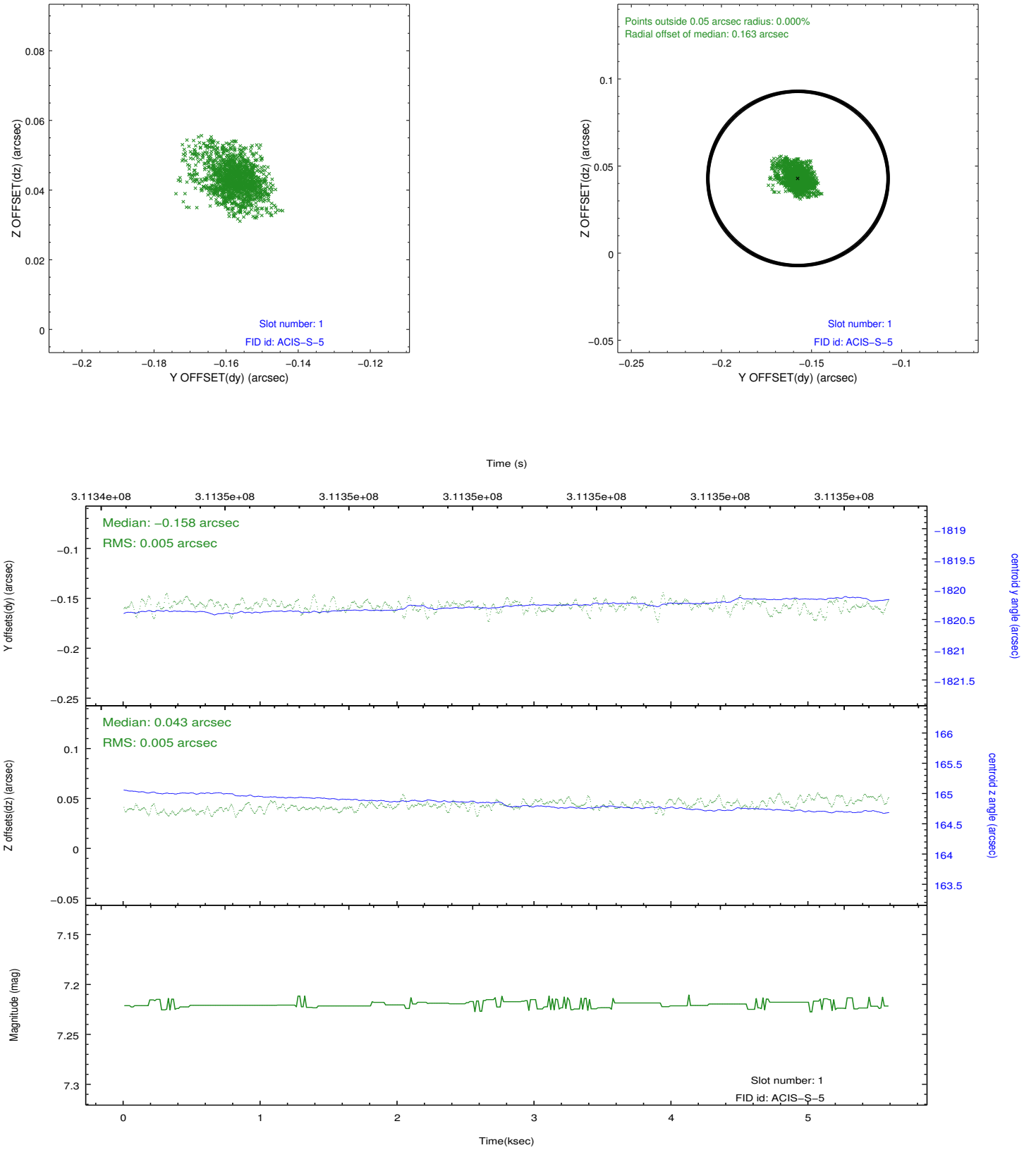


2.5 FID Slots

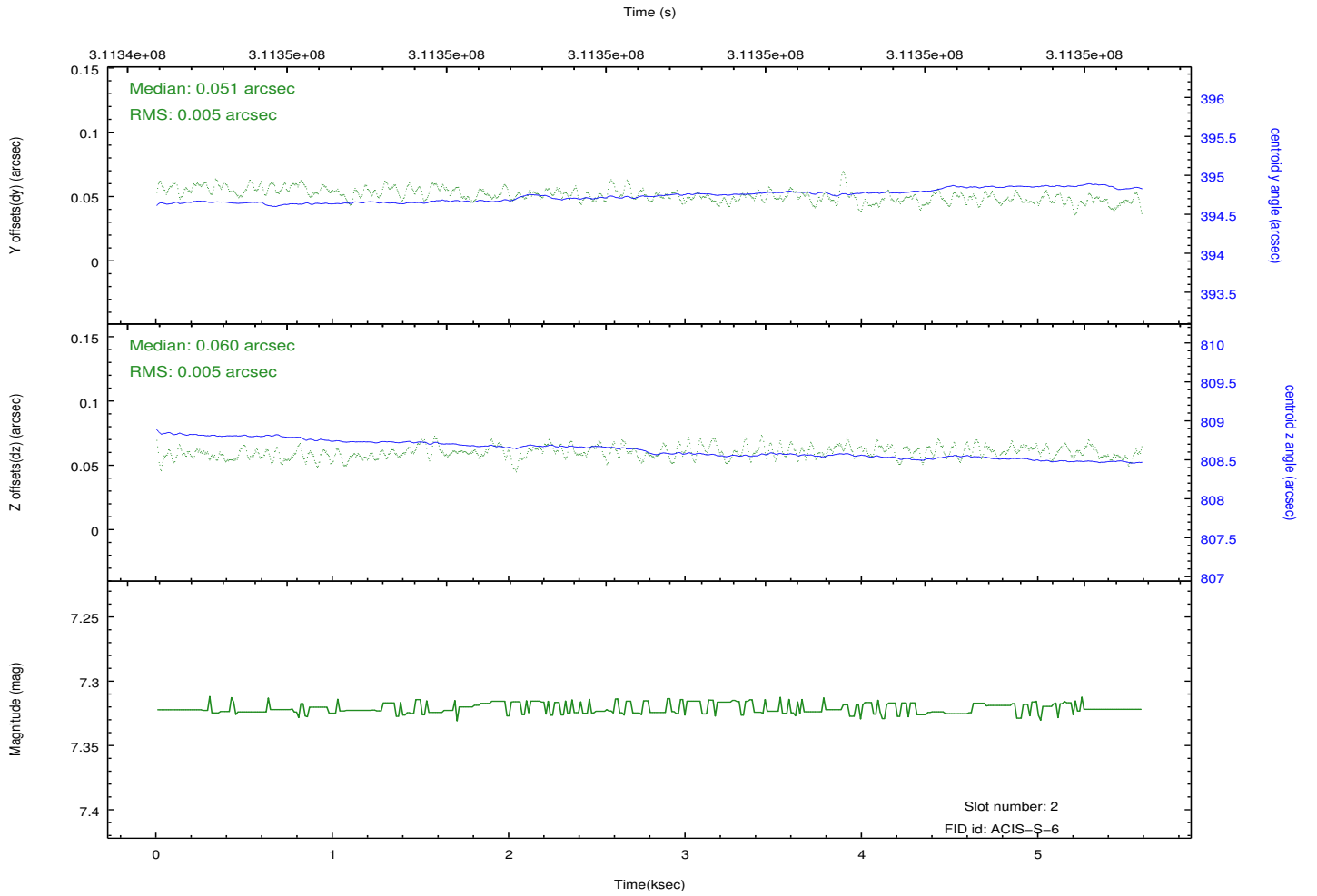
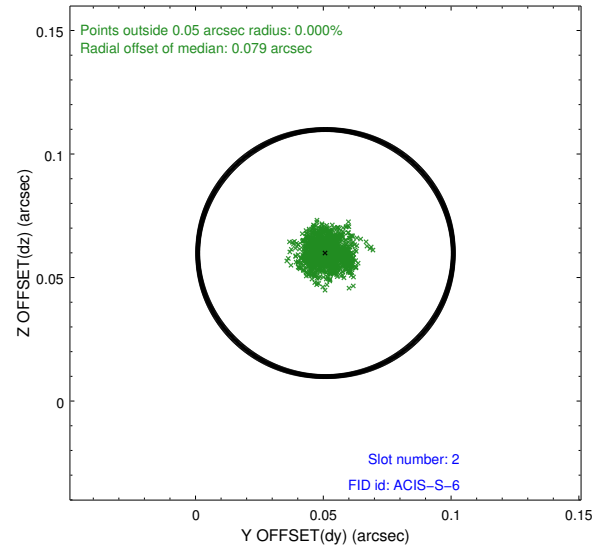
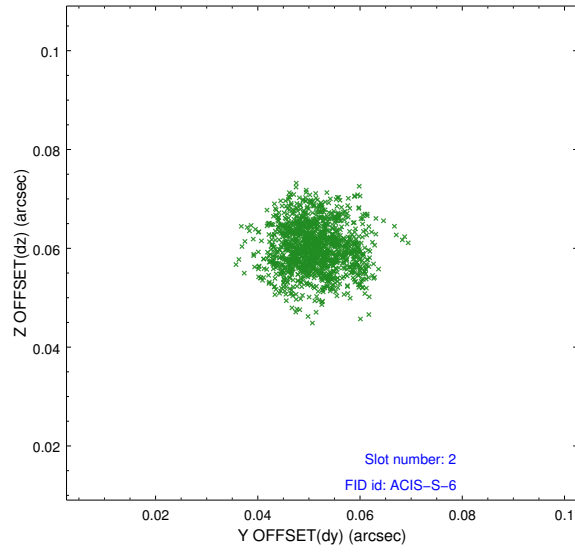
2.5.1 Slot 0



2.5.2 Slot 1



2.5.3 Slot 2



A Summary

A.1 Status

V&V Scientist	Jen Lauer
V&V Date (YYYY-MM-DD)	2012.05.07
V&V Edition	1
V&V Disposition and Status	OK
V&V Charge Time	5.15839998

A.2 Comments

Joint Proposal: Spitzer