

# V&V Reference Report

## L2 ASCDS Version : 8.4.4

Observation 7821 - L2 Version 2  
Chandra X-Ray Center

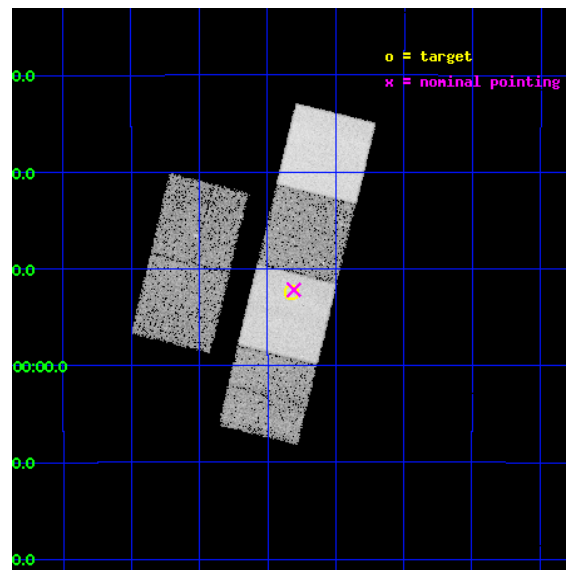
L2 Processing Date : Apr 27 2012

## Contents

<b>1</b>	<b>Front</b>	<b>2</b>
<b>2</b>	<b>OBI</b>	<b>3</b>
2.1	OBI . . . . .	3
2.1.1	Images . . . . .	3
2.1.2	Bias . . . . .	3
2.1.3	Parameters . . . . .	4
2.1.4	Events . . . . .	4
2.2	Compared Parameters . . . . .	5
2.3	Aspect . . . . .	6
2.4	Star Slots . . . . .	9
2.4.1	Slot 3 . . . . .	9
2.4.2	Slot 4 . . . . .	10
2.4.3	Slot 5 . . . . .	11
2.4.4	Slot 6 . . . . .	12
2.4.5	Slot 7 . . . . .	13
2.5	FID Slots . . . . .	14
2.5.1	Slot 0 . . . . .	14
2.5.2	Slot 1 . . . . .	15
2.5.3	Slot 2 . . . . .	16
<b>A</b>	<b>Summary</b>	<b>17</b>
A.1	Status . . . . .	17
A.2	Comments . . . . .	17

# 1 Front

seq_num	701485	Sequence number
obs_id	7821	Observation id
title	The Chandra-RBGS Survey of a Complete Sample of Luminous Infrared Galaxies	Proposal title
observer	Professor David Sanders	Principal investigator
object	IRAS F22491-1808	Source name
dtcycle	0	&#160
cycle	P	events from which exps? Prim/Second/Both
ra_targ	342.955417	Observer's specified target RA [deg]
dec_targ	-17.873194	Observer's specified target Dec [deg]
ra_nom	342.9517973873	Nominal RA [deg]
dec_nom	-17.869799627895	Nominal Dec [deg]
roll_nom	103.73723884754	Nominal Roll [deg]
revision	2	Processing version of data
ontime	15164.799943566	Sum of GTIs [s]
livetime	14972.774115535	Livetime [s]
ontime2	15158.317963064	Sum of GTIs [s]
ontime3	15161.558943391	Sum of GTIs [s]
ontime5	15164.799943566	Sum of GTIs [s]
ontime6	15164.799943566	Sum of GTIs [s]
ontime7	15164.799943566	Sum of GTIs [s]
ontime8	15161.558953285	Sum of GTIs [s]
l2events	180979	Number of level 2 events

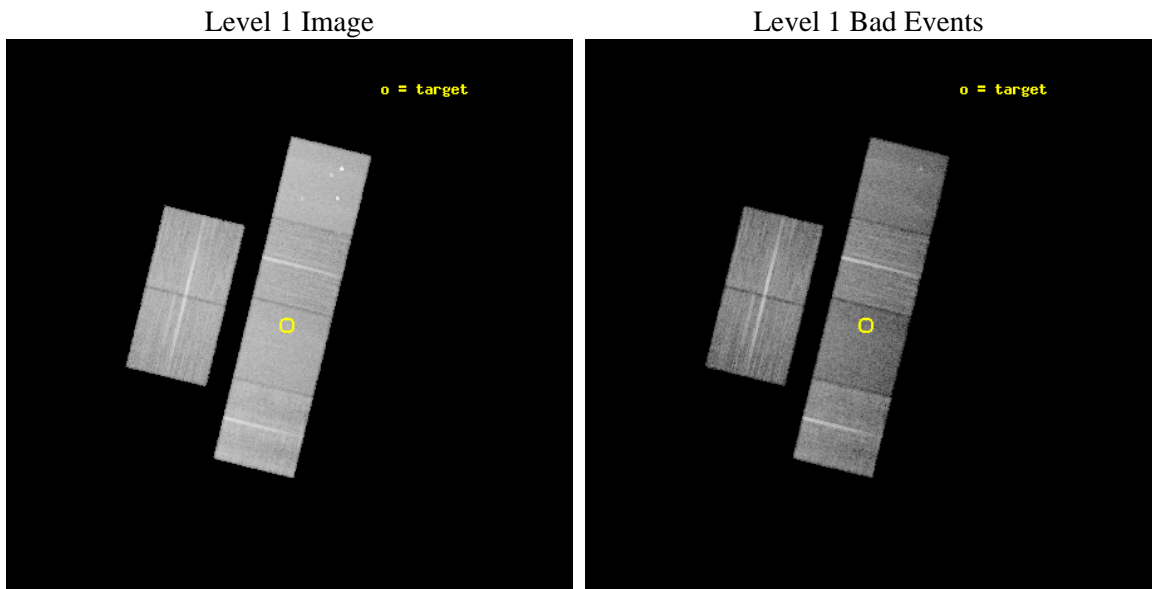




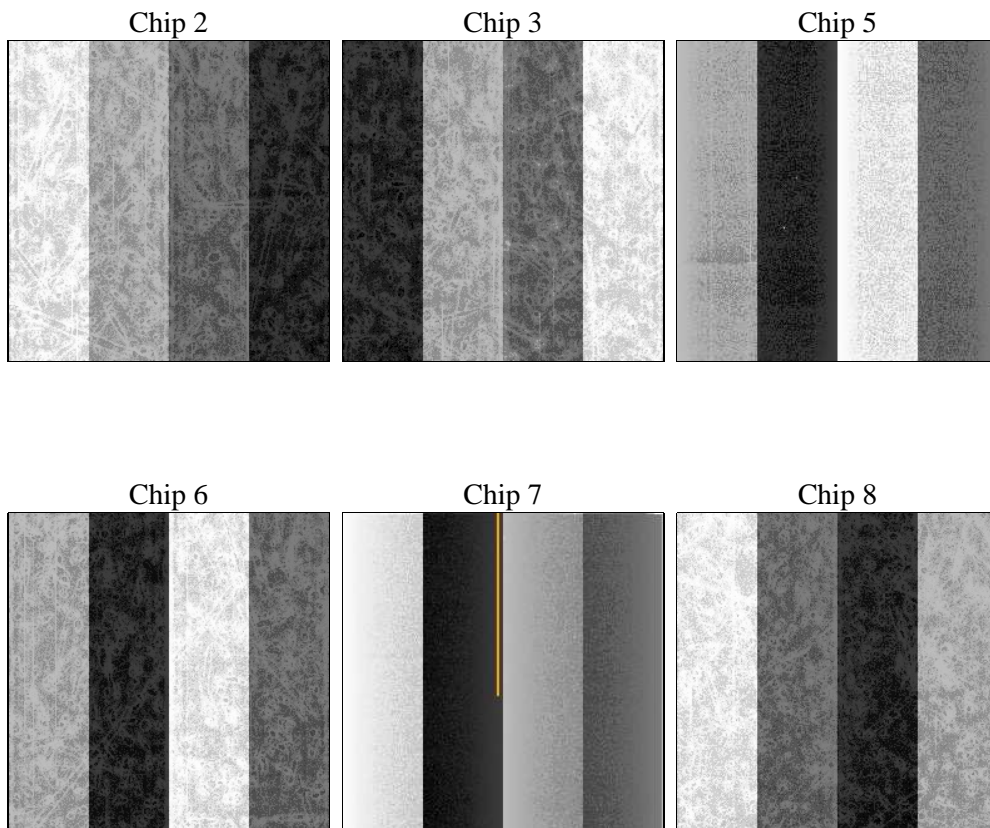
## 2 OBI

### 2.1 OBI

#### 2.1.1 Images



#### 2.1.2 Bias



### 2.1.3 Parameters

obi_num	0	Obi number	sched_exp_time	15000.000000	[s] Scheduled observation exposure time
ascdsver	8.4.4	Processing system revision	ontime	15164.799943566	Sum of GTIs [s]
caldsver	4.4.9	&#160	ontime2	15158.317963064	Sum of GTIs [s]
date	2012-04-28T01:04:48	Date and time of file creation	ontime3	15161.558943391	Sum of GTIs [s]
revision	2	Processing version of data	ontime5	15164.799943566	Sum of GTIs [s]
			ontime6	15164.799943566	Sum of GTIs [s]
			ontime7	15164.799943566	Sum of GTIs [s]
			ontime8	15161.558953285	Sum of GTIs [s]
			l1events	847612	Number of level 1 events

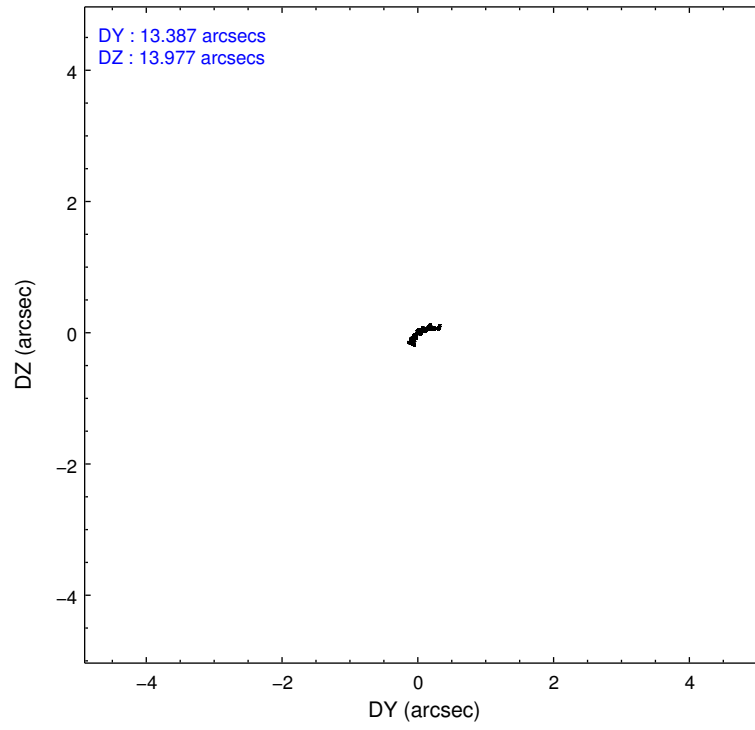
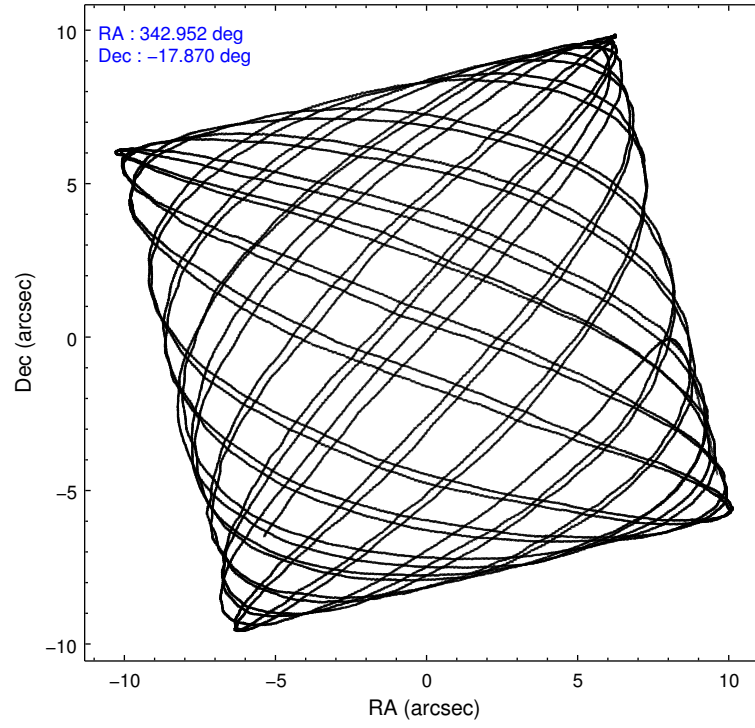
### 2.1.4 Events

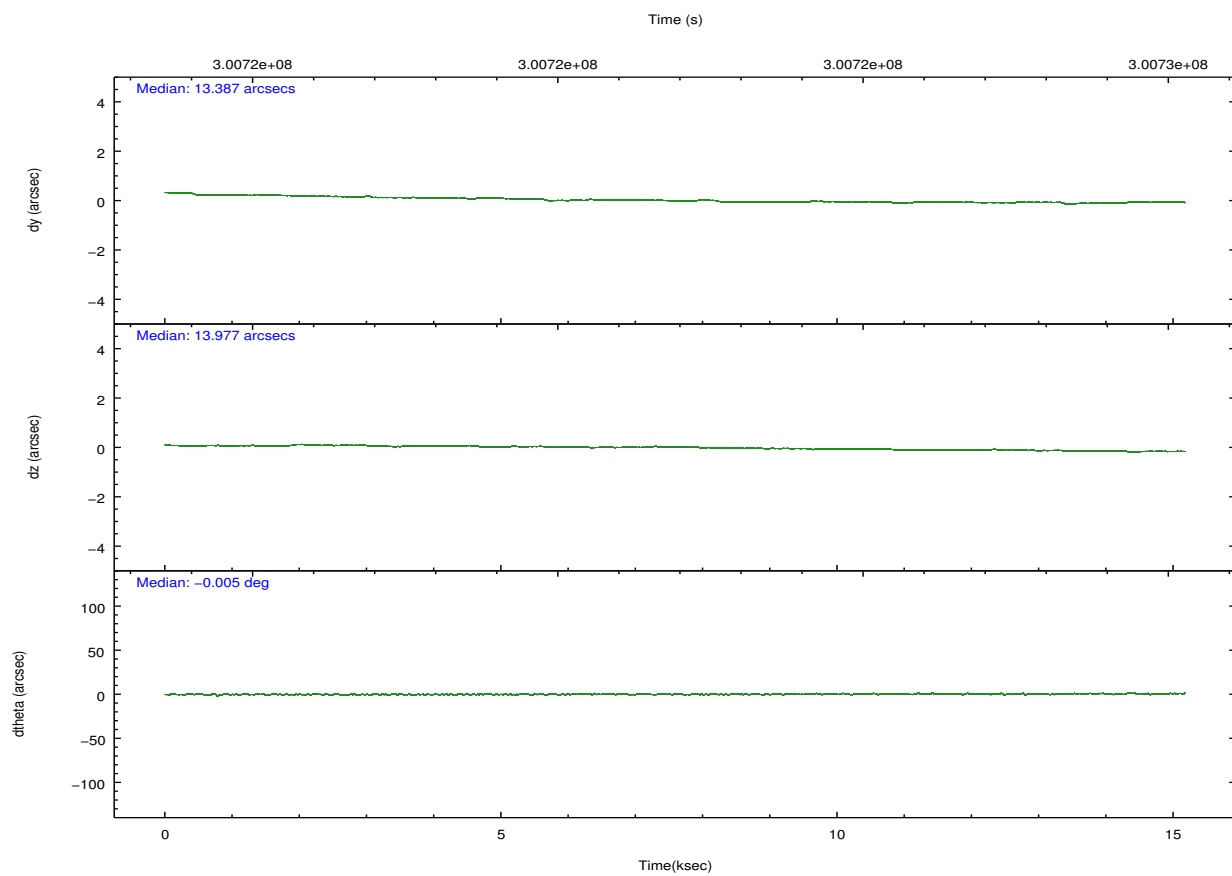
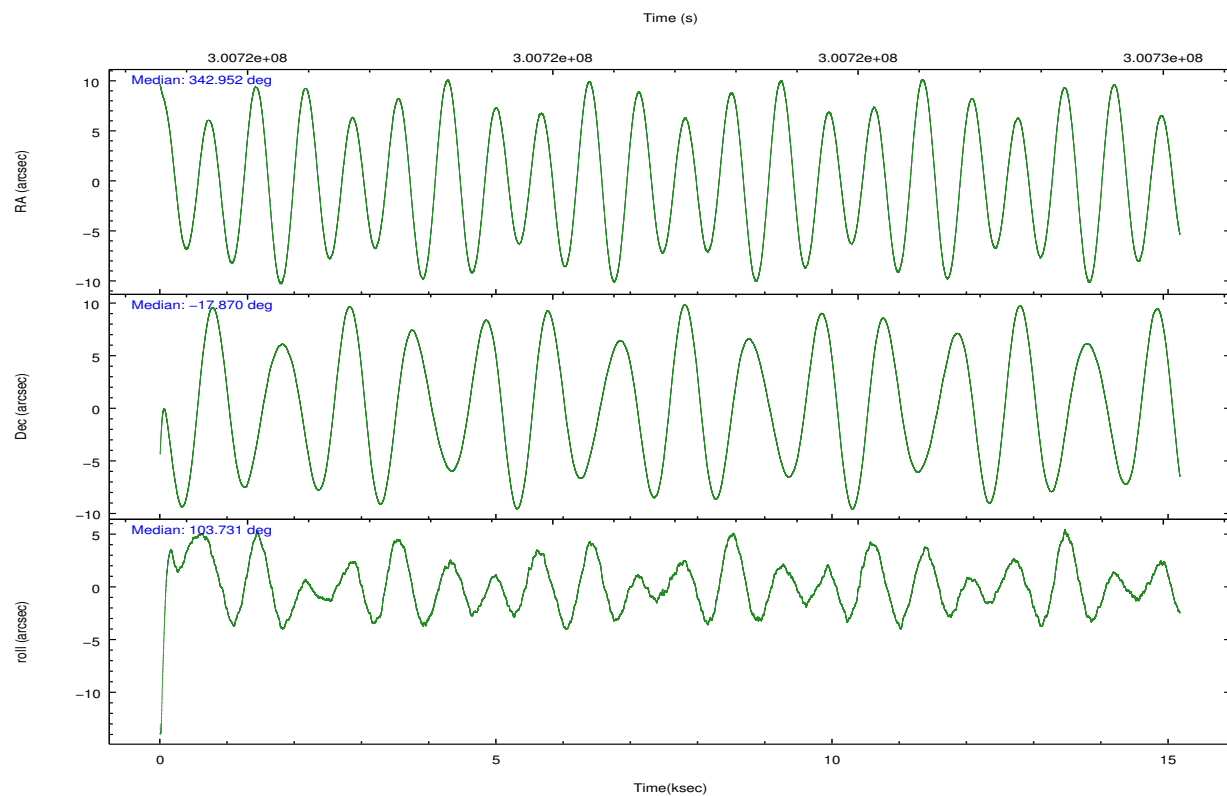
	ccd 2	ccd 3	ccd 5	ccd 6	ccd 7	ccd 8		ccd 2	ccd 3	ccd 5	ccd 6	ccd 7	ccd 8
level 1 events	136431	124223	169205	125686	135357	156710	grade 0 events	4364	4227	9383	4731	5693	11183
rejected events	124624	112802	84619	112831	74173	120385		3%	3%	5%	3%	4%	7%
rejected %	91%	90%	50%	89%	54%	76%	grade 1 events	73	83	482	54	150	116
								0%	0%	0%	0%	0%	0%
							grade 2 events	2715	2340	25078	2708	12405	8294
								1%	1%	14%	2%	9%	5%
							grade 3 events	1278	1346	3375	1344	5512	3813
								0%	1%	1%	1%	4%	2%
							grade 4 events	1257	1271	3059	1385	5569	3478
								0%	1%	1%	1%	4%	2%
							grade 5 events	3898	4694	12524	4943	13877	6910
								2%	3%	7%	3%	10%	4%
							grade 6 events	2252	2298	44158	2750	32301	9662
								1%	1%	26%	2%	23%	6%
							grade 7 events	120594	107964	71146	107771	59850	113254
								88%	86%	42%	85%	44%	72%

## 2.2 Compared Parameters

Parameter	Planned	Actual	Parameter	Planned	Actual
Instrument	ACIS	ACIS	Obspar format version number	7	7
Detector	ACIS-235678	ACIS-235678	Obspar file type	PREDICTED	ACTUAL
Grating	NONE	NONE	Obspar update status	NONE	UPDATED
Data mode	VFAINT	VFAINT	CCD I0 on	N	N
Observation mode	POINTING	POINTING	CCD I1 on	N	N
[deg] Pointing RA	342.971935	342.9517973873025	CCD I2 on	O1	Y
[deg] Pointing Dec	-17.889279	-17.86979962789482	CCD I3 on	O2	Y
[deg] Pointing Roll	103.586803	103.7372388475414	CCD S0 on	N	N
[mm] SIM focus pos	-0.684267	-0.6828225247311905	CCD S1 on	O3	Y
[mm] SIM defocus	0	0.001444936568705701	CCD S2 on	O5	Y
[mm] SIM translation stage pos	-190.132523	-190.1400660498719	CCD S3 on	Y	Y
[mm] SIM translation stage offset	0	0.00754346686406393	CCD S4 on	O4	Y
[s] Observation start time (MET)	300714512.184000	300713408.85144	CCD S5 on	N	N
Observation start date	2007-07-13T11:47:27	2007-07-13T11:30:08	Number of optional ACIS chips dropped	0	0
[s] Observation end time (MET)	300729512.184000	300730414.62726	On-chip summing requested	N	N
Observation end date	2007-07-13T15:57:27	2007-07-13T16:13:34	Subarray requested	NONE	NONE
Read mode	TIMED	TIMED	Alternating exposures requested	N	N
			[s] Primary exposure time	0.000000	3.2

## 2.3 Aspect



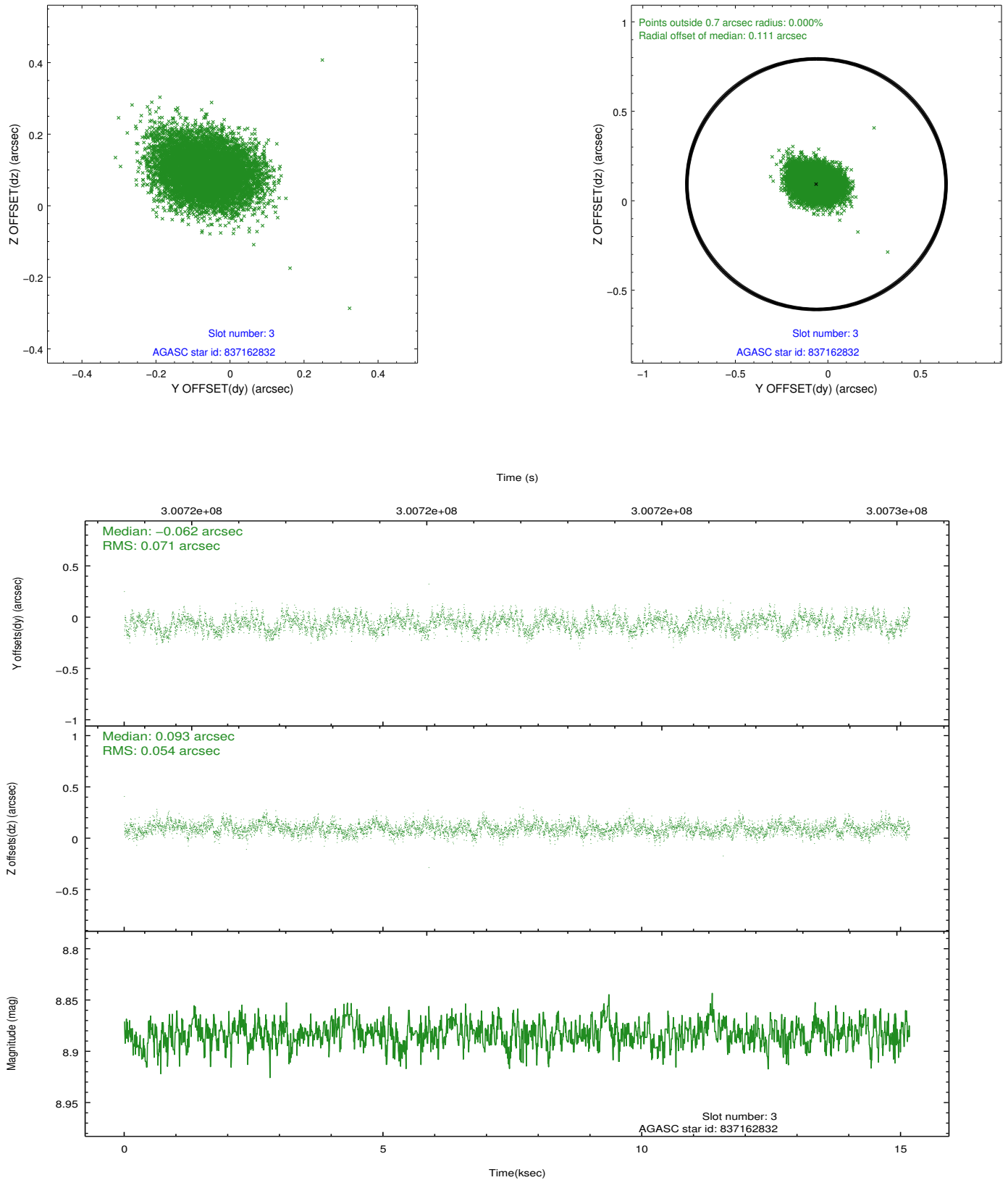


### Slot Statistics

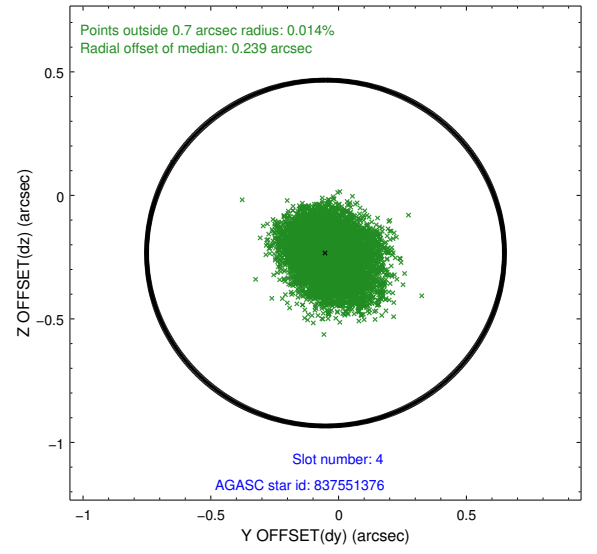
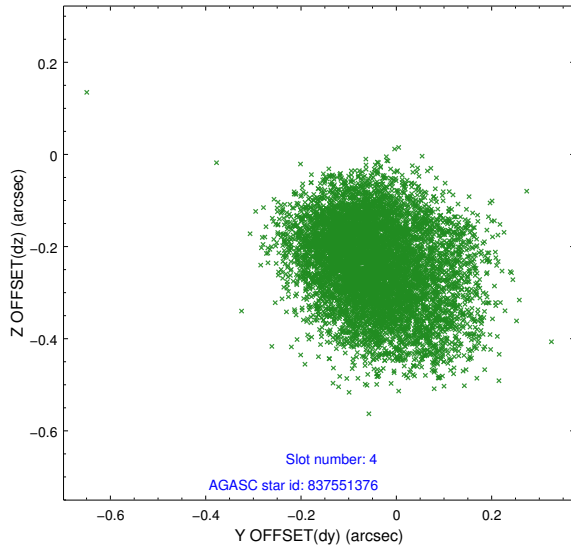
slot	status	id	mag	n_pts	med_dy	med_dz	dr1	dr2	ra	dec	mean_y	mean_z
0	FID	ACIS-S-1	7.18	3701	0.061	-0.029	0.010	0.022	0.000000	0.000000	929.74	-1730.97
1	FID	ACIS-S-4	7.19	3701	0.146	-0.005	0.008	0.015	0.000000	0.000000	2147.40	172.90
2	FID	ACIS-S-5	7.22	3698	-0.233	0.046	0.010	0.020	0.000000	0.000000	-1819.04	166.89
3	GUIDE	837162832	8.88	7400	-0.062	0.093	0.094	0.152	343.313375	-17.165164	2257.45	-1753.29
4	GUIDE	837551376	9.40	7388	-0.051	-0.233	0.137	0.220	342.721102	-17.819815	444.99	776.76
5	GUIDE	837555048	8.50	7400	0.025	0.220	0.064	0.102	343.494742	-18.059239	-1017.17	-1594.76
6	GUIDE	837555448	9.27	7399	-0.123	-0.051	0.091	0.148	342.502964	-18.039667	-151.87	1688.82
7	GUIDE	837557912	9.80	7392	0.206	-0.029	0.119	0.195	342.933193	-18.269750	-1299.85	450.23

## 2.4 Star Slots

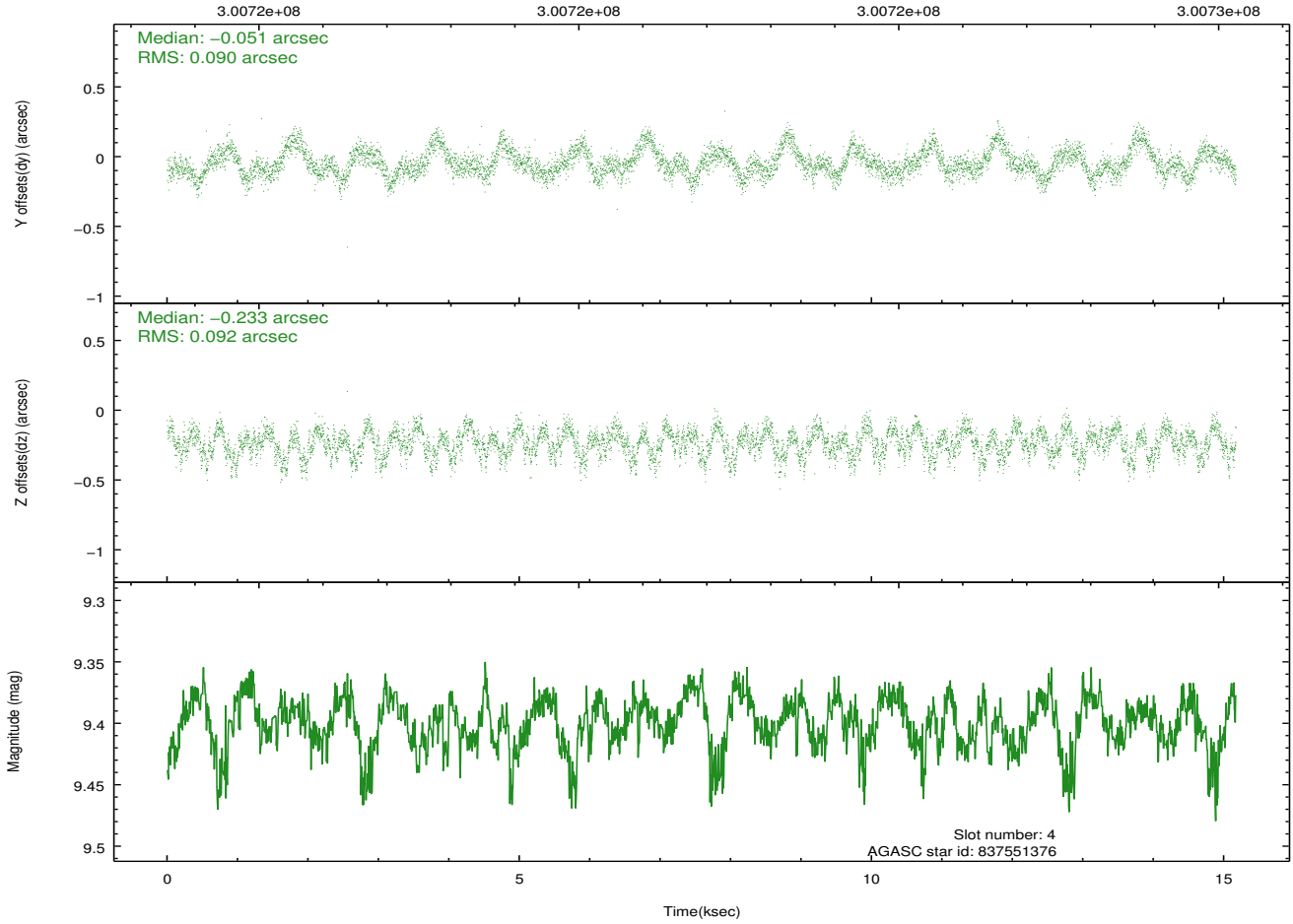
### 2.4.1 Slot 3



## 2.4.2 Slot 4

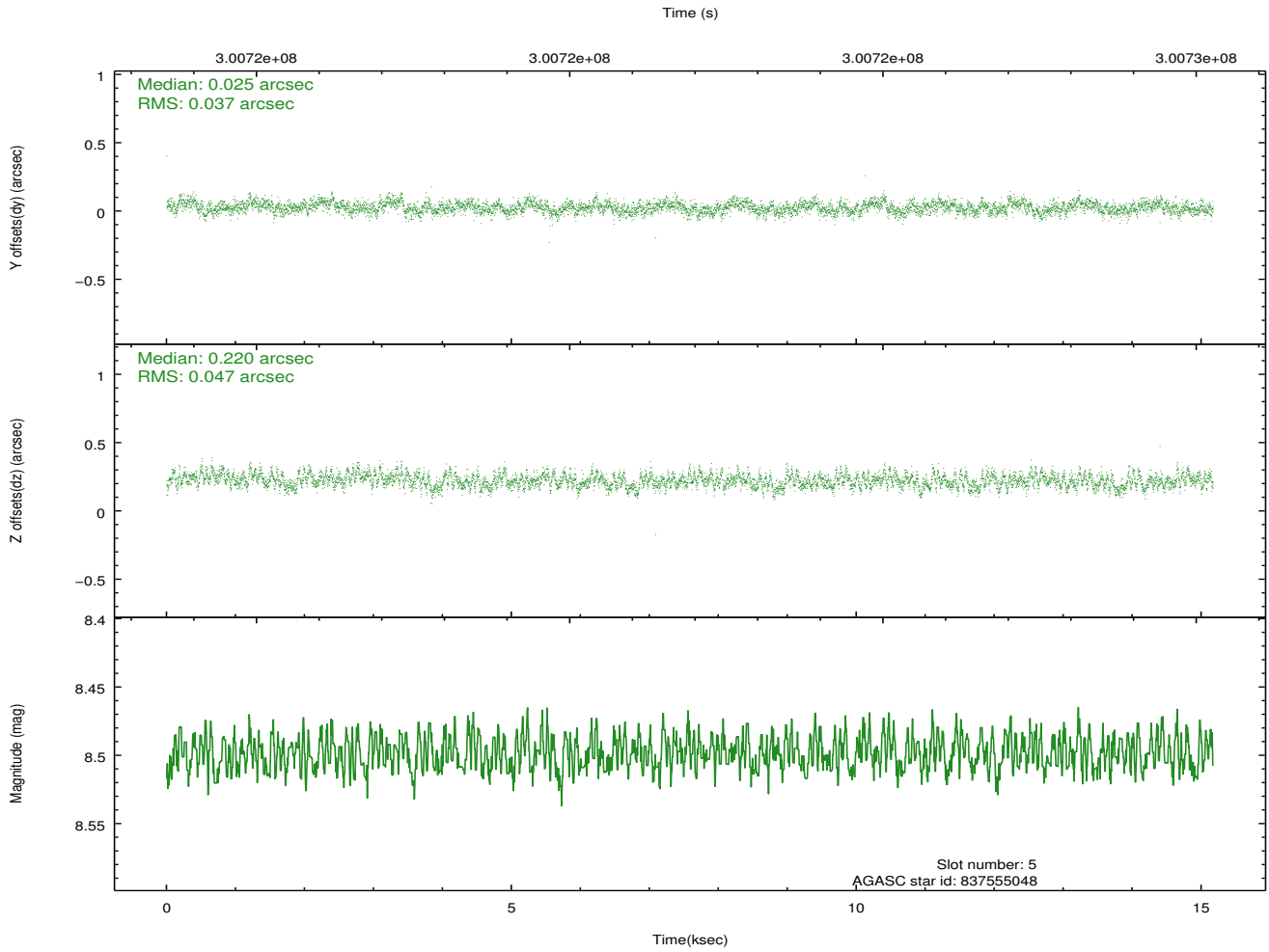
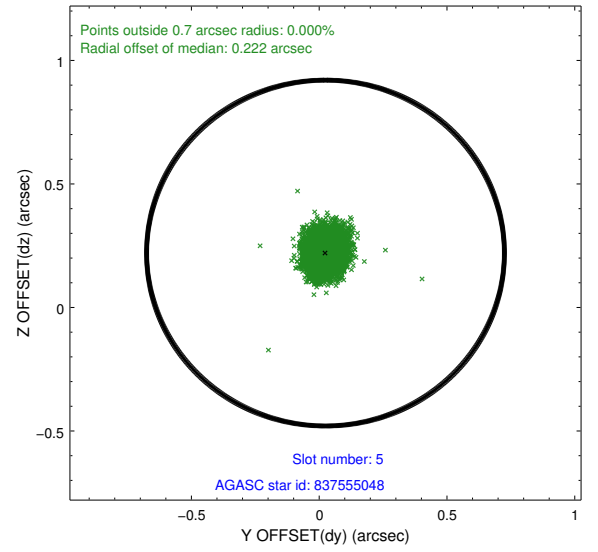
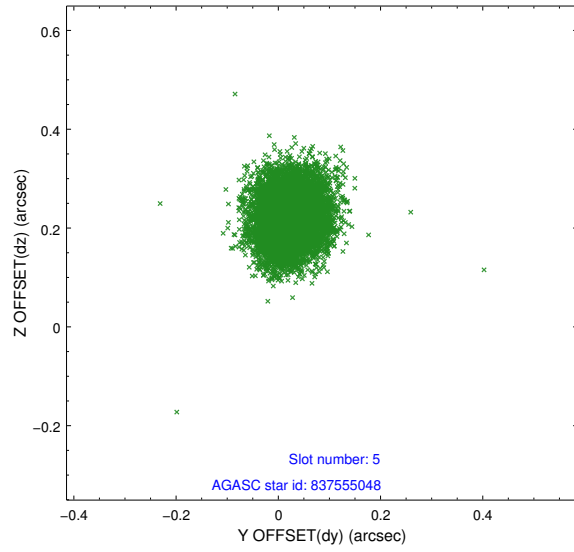


Time (s)

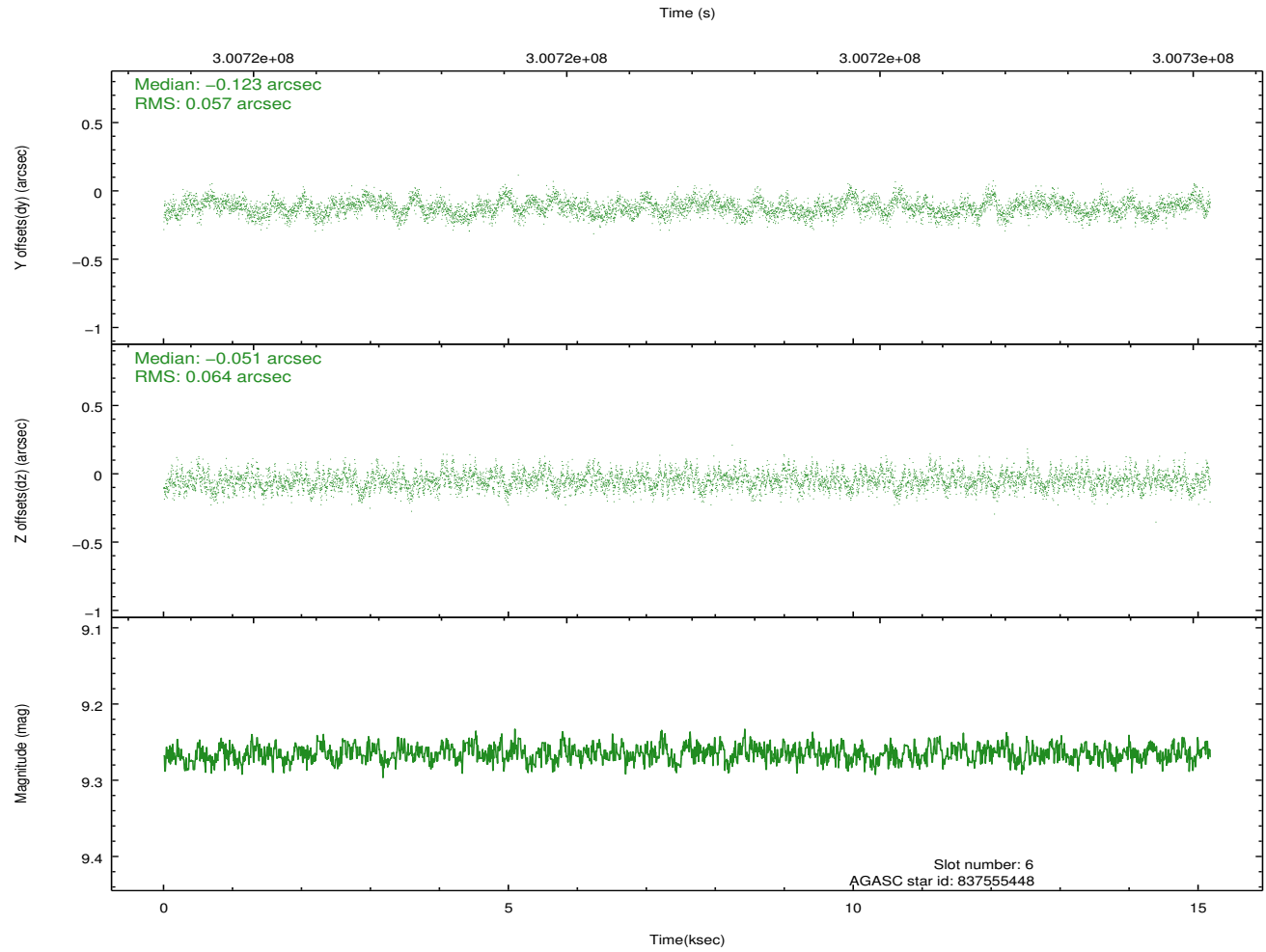
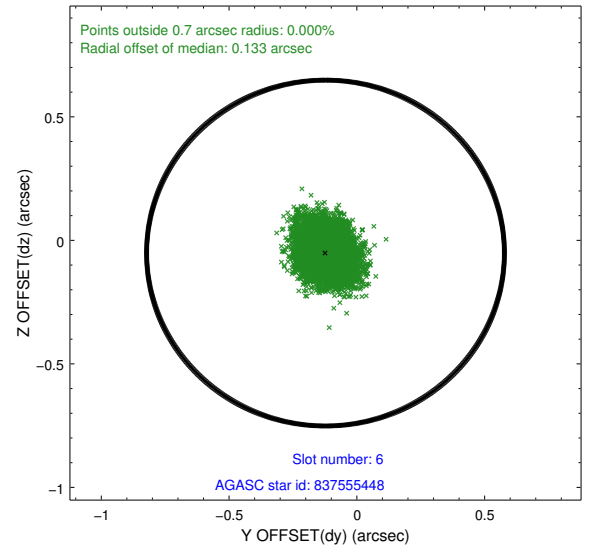
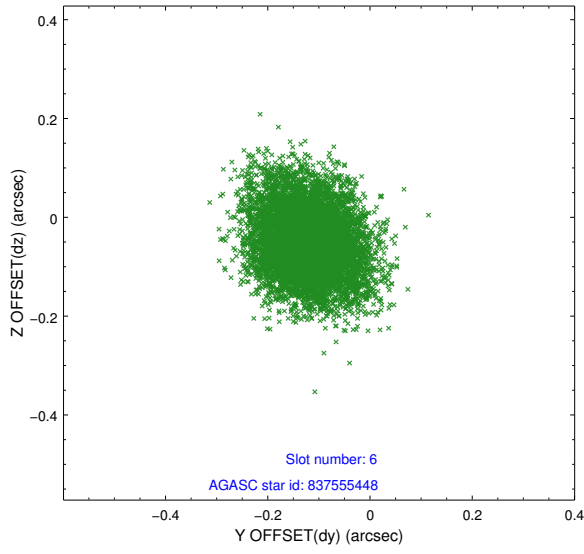




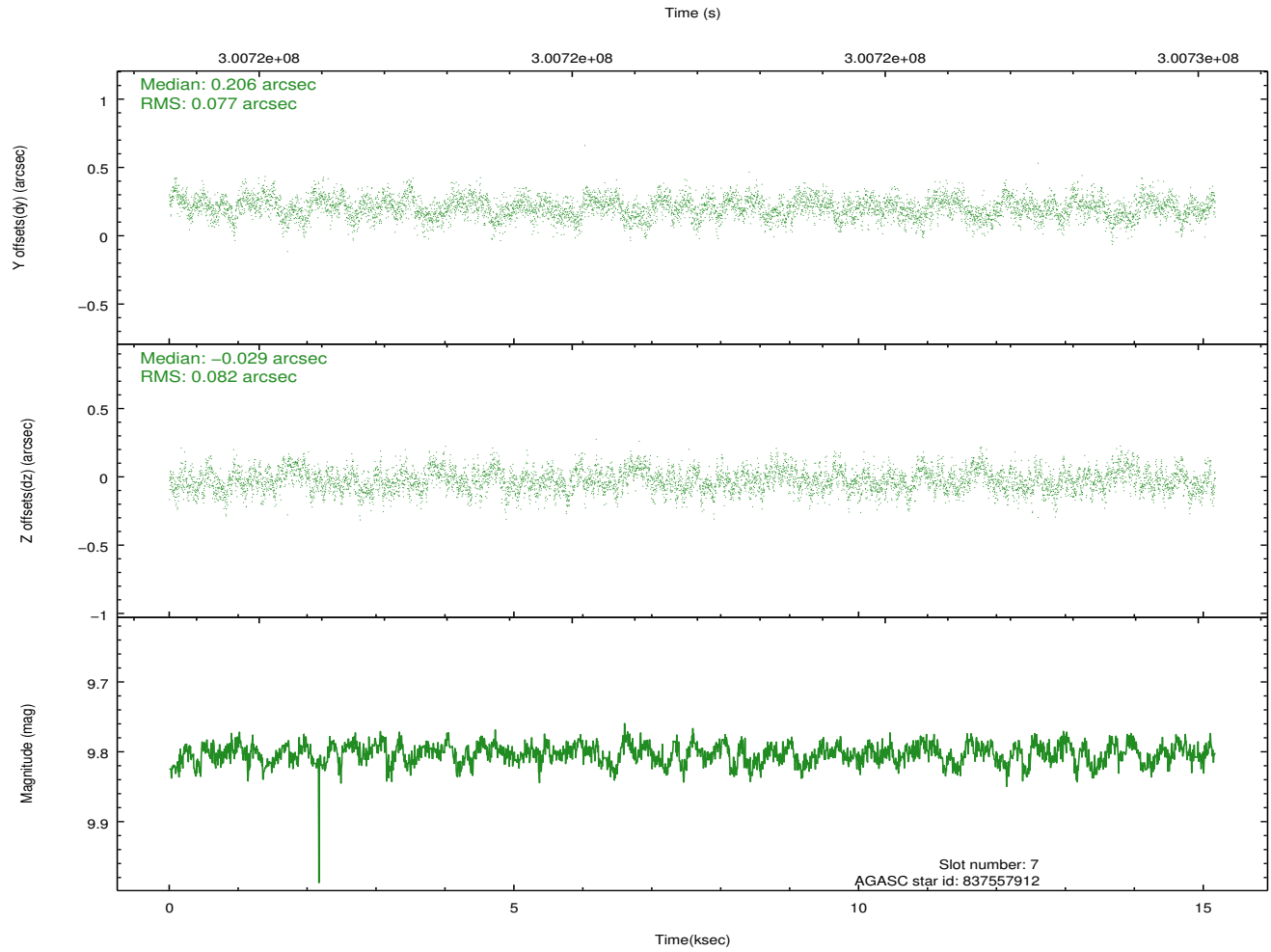
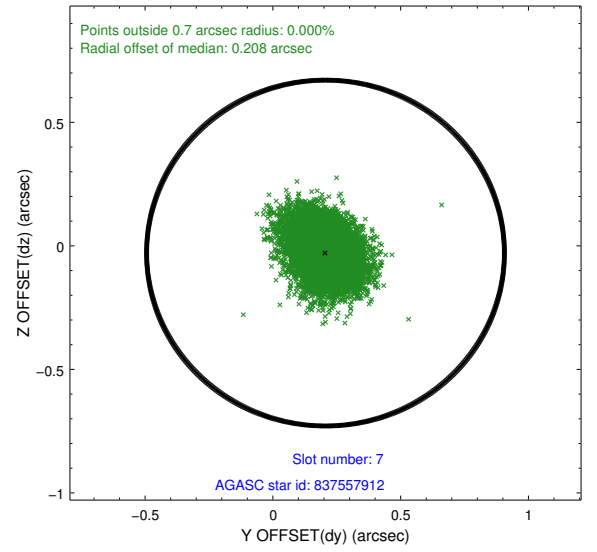
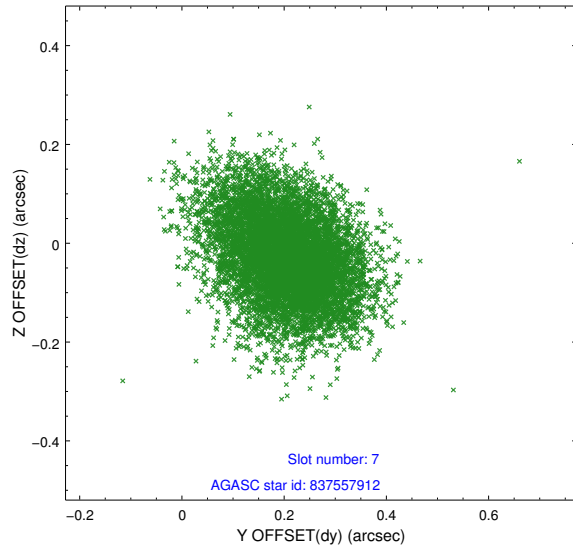
### 2.4.3 Slot 5



## 2.4.4 Slot 6

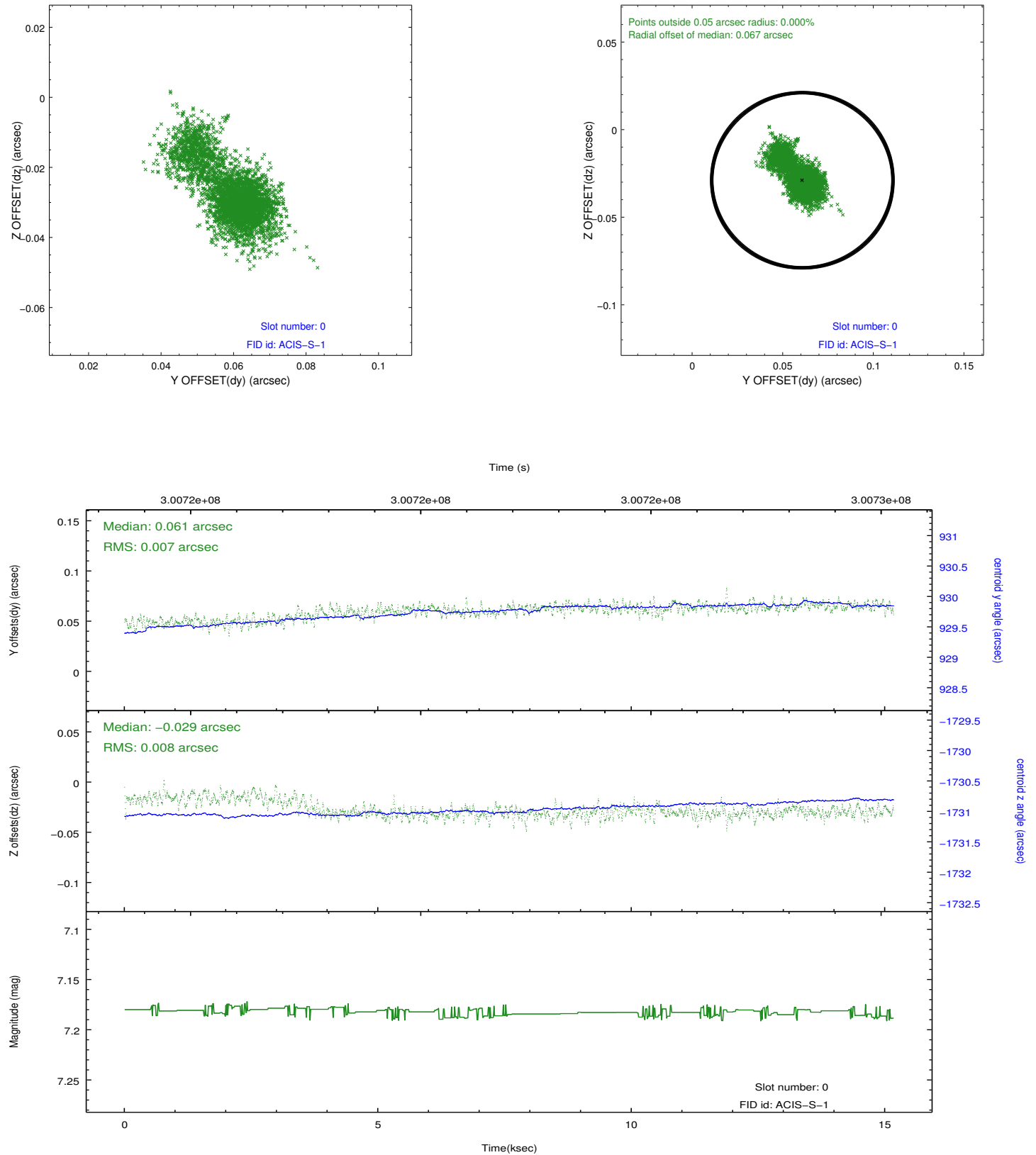


## 2.4.5 Slot 7

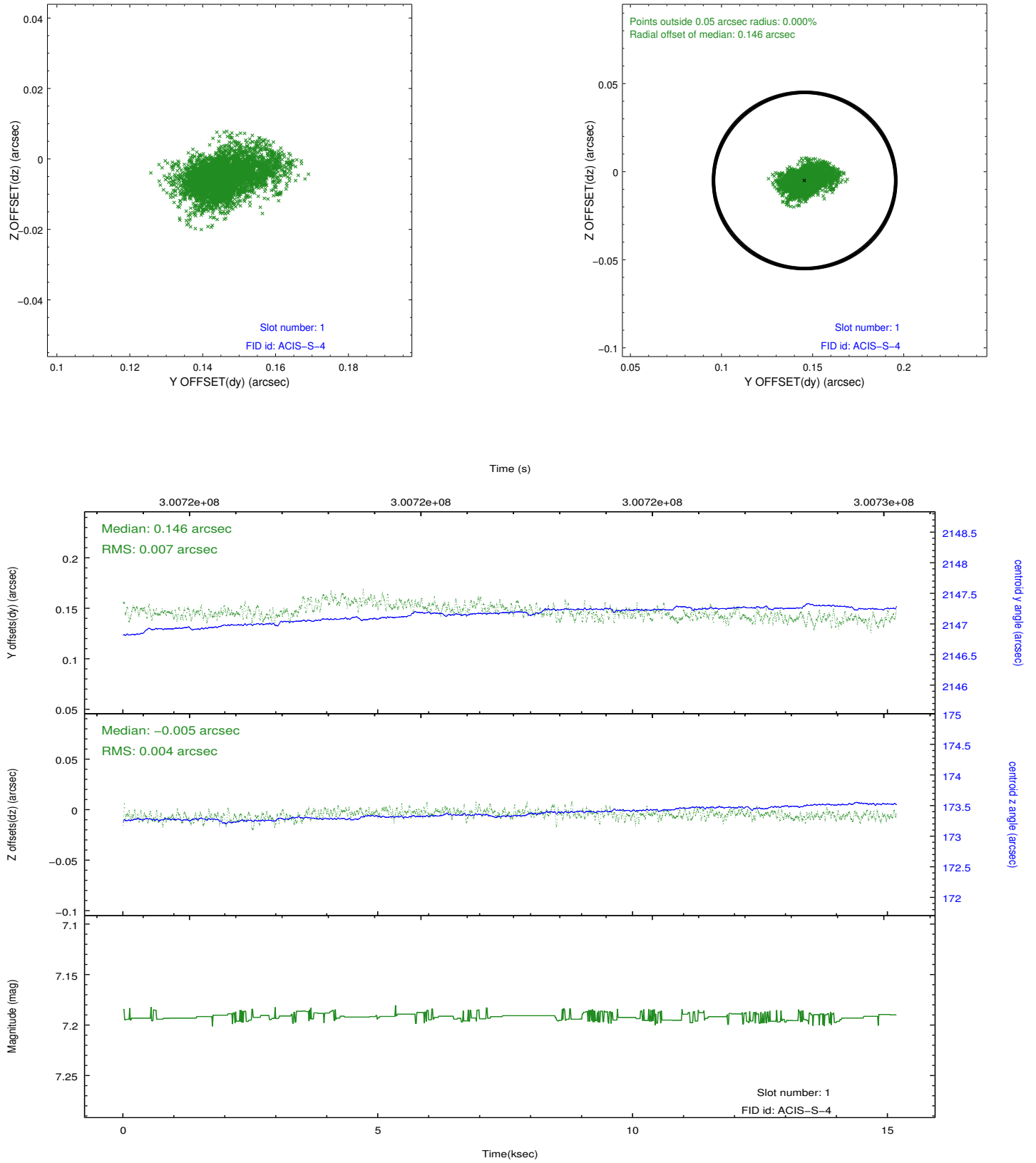


## 2.5 FID Slots

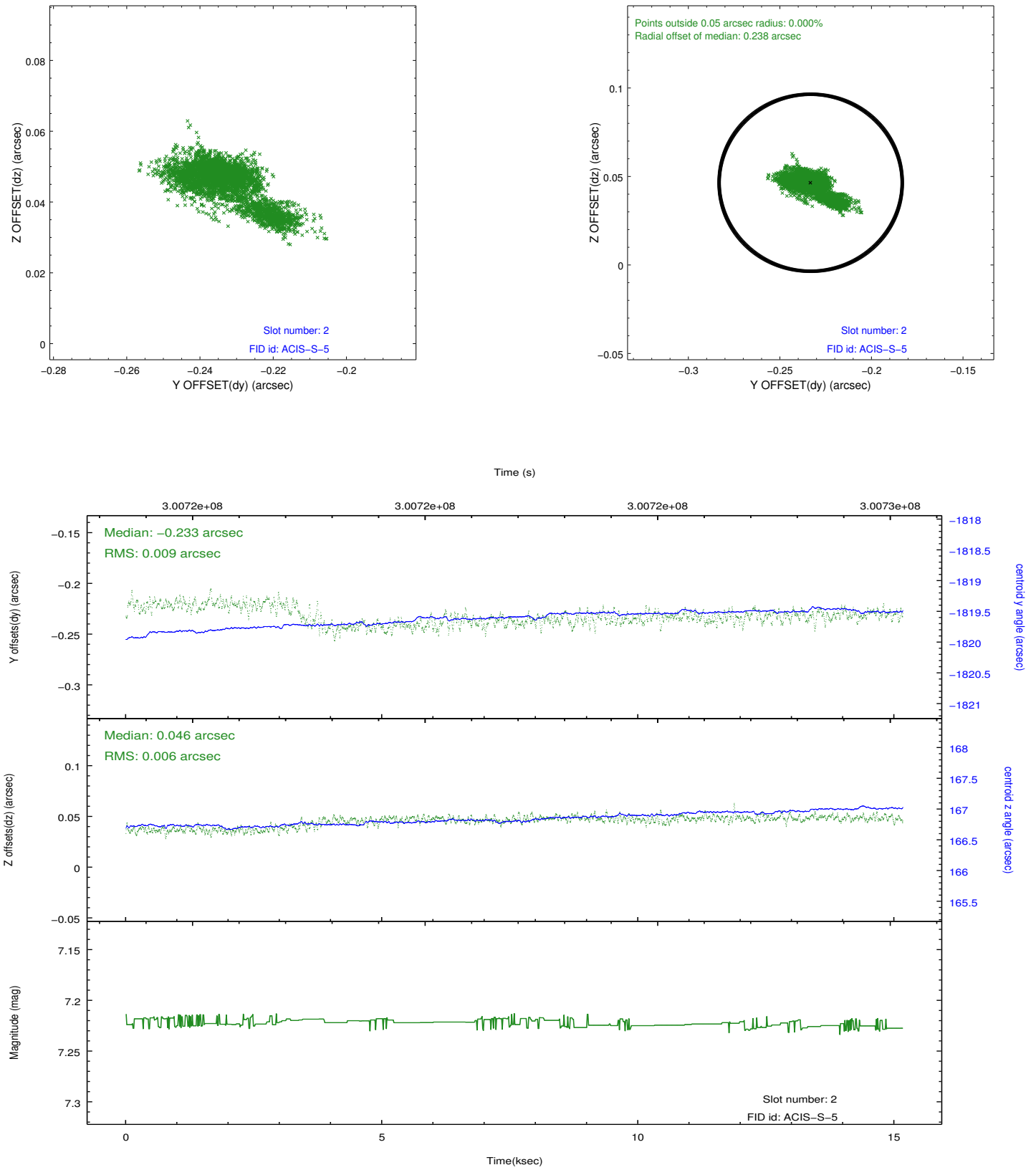
### 2.5.1 Slot 0



## 2.5.2 Slot 1



### 2.5.3 Slot 2



## A Summary

### A.1 Status

V&V Scientist	Jen Lauer
V&V Date (YYYY-MM-DD)	2012.04.30
V&V Edition	1
V&V Disposition and Status	OK
V&V Charge Time	15.1647999

### A.2 Comments