

V&V Reference Report

L2 ASCDS Version : 8.4.4

Observation 7711 - L2 Version 3
Chandra X-Ray Center

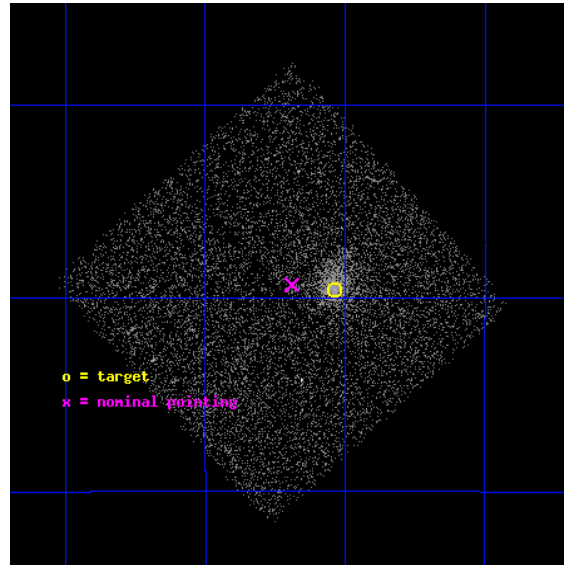
L2 Processing Date : Apr 18 2012

Contents

1	Front	2
2	OBI	3
2.1	OBI	3
2.1.1	Images	3
2.1.2	Bias	3
2.1.3	Parameters	4
2.1.4	Events	4
2.2	Compared Parameters	5
2.3	Aspect	6
2.4	Star Slots	9
2.4.1	Slot 3	9
2.4.2	Slot 4	10
2.4.3	Slot 5	11
2.4.4	Slot 6	12
2.4.5	Slot 7	13
2.5	FID Slots	14
2.5.1	Slot 0	14
2.5.2	Slot 1	15
2.5.3	Slot 2	16
A	Summary	17
A.1	Status	17
A.2	Comments	17

1 Front

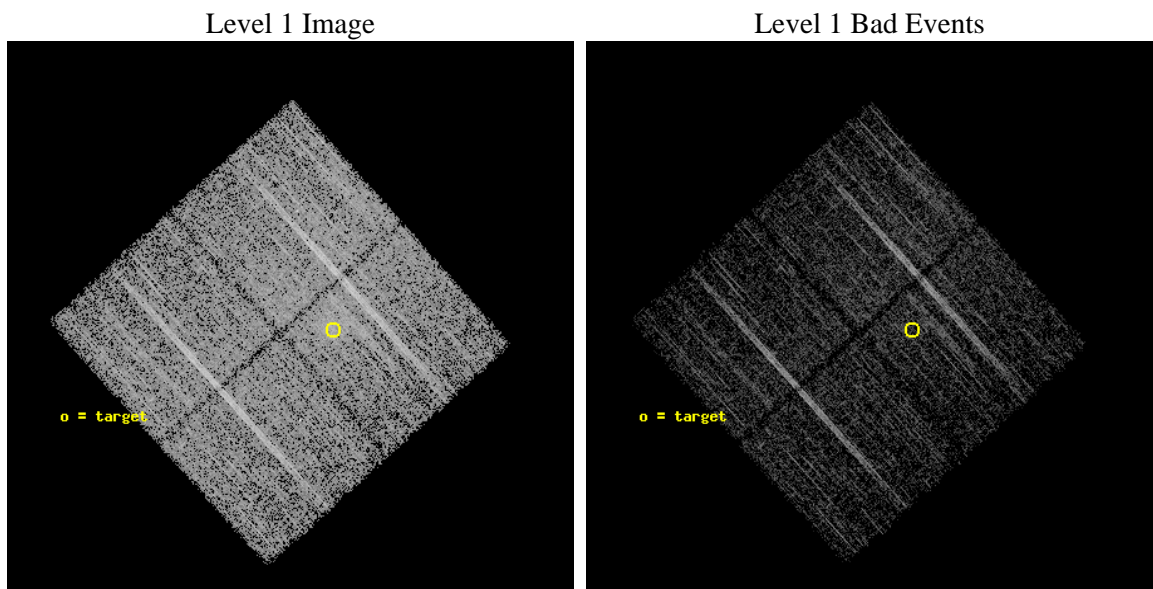
seq_num	701379	Sequence number
obs_id	7711	Observation id
title	Snapshot Survey for X-ray Outbursts in Rich Clusters of Galaxies	P
observer	Professor Gordon Garmire	Principal investigator
object	MS1008.1-1224	Source name
dtcycle	0	
cycle	P	events from which exps? Prim/Second/Both
ra_targ	152.634583	Observer's specified target RA [deg]
dec_targ	-12.658889	Observer's specified target Dec [deg]
ra_nom	152.67269421144	Nominal RA [deg]
dec_nom	-12.655256891137	Nominal Dec [deg]
roll_nom	47.961970937989	Nominal Roll [deg]
revision	3	Processing version of data
ontime	7055.6000542641	Sum of GTIs [s]
livetime	6963.4134452979	Livetime [s]
ontime0	7049.3180737495	Sum of GTIs [s]
ontime1	7055.6000542641	Sum of GTIs [s]
ontime2	7052.4590939283	Sum of GTIs [s]
ontime3	7055.6000542641	Sum of GTIs [s]
l2events	14366	Number of level 2 events



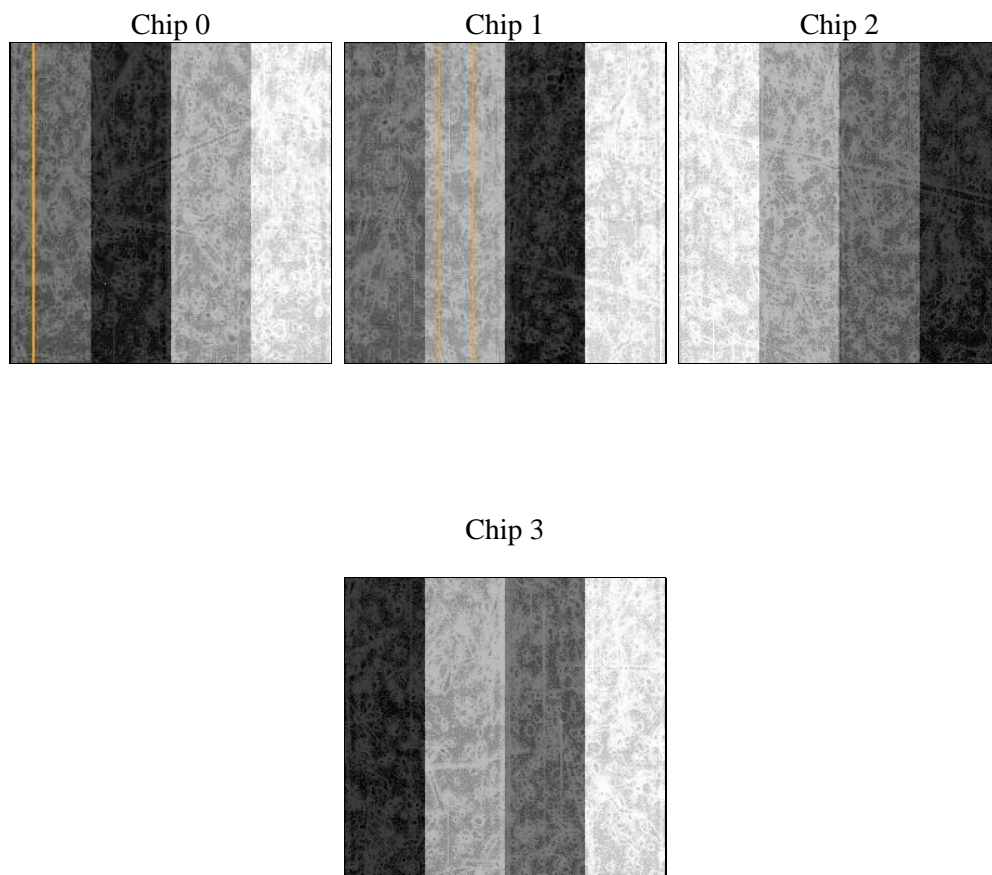
2 OBI

2.1 OBI

2.1.1 Images



2.1.2 Bias



2.1.3 Parameters

obi_num	0	Obi number	sched_exp_time	7000.000000	[s] Scheduled observation exposure time
ascdsver	8.4.4	Processing system revision	ontime	7055.6000542641	Sum of GTIs [s]
caldsver	4.4.9	 	ontime0	7049.3180737495	Sum of GTIs [s]
date	2012-04-18T12:13:14	Date and time of file creation	ontime1	7055.6000542641	Sum of GTIs [s]
revision	3	Processing version of data	ontime2	7052.4590939283	Sum of GTIs [s]
			ontime3	7055.6000542641	Sum of GTIs [s]
			l1events	184618	Number of level 1 events

2.1.4 Events

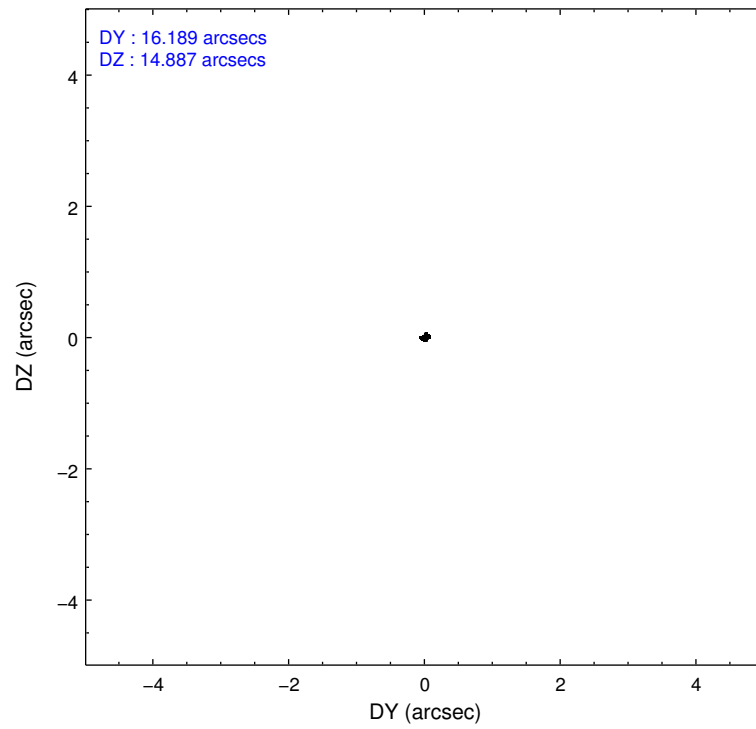
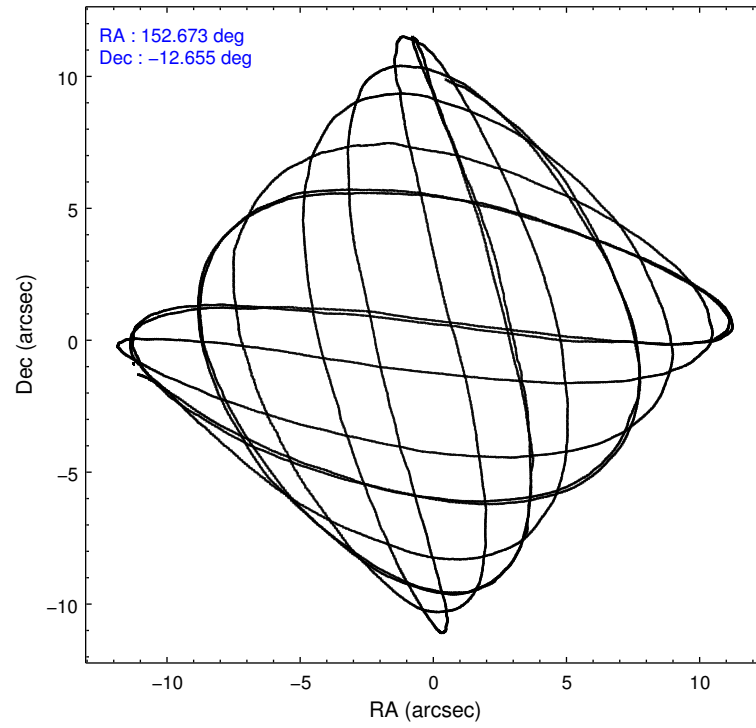
	ccd 0	ccd 1	ccd 2	ccd 3
level 1 events	44080	42556	51363	46619
rejected events	39821	38124	47292	41210
rejected %	90%	89%	92%	88%

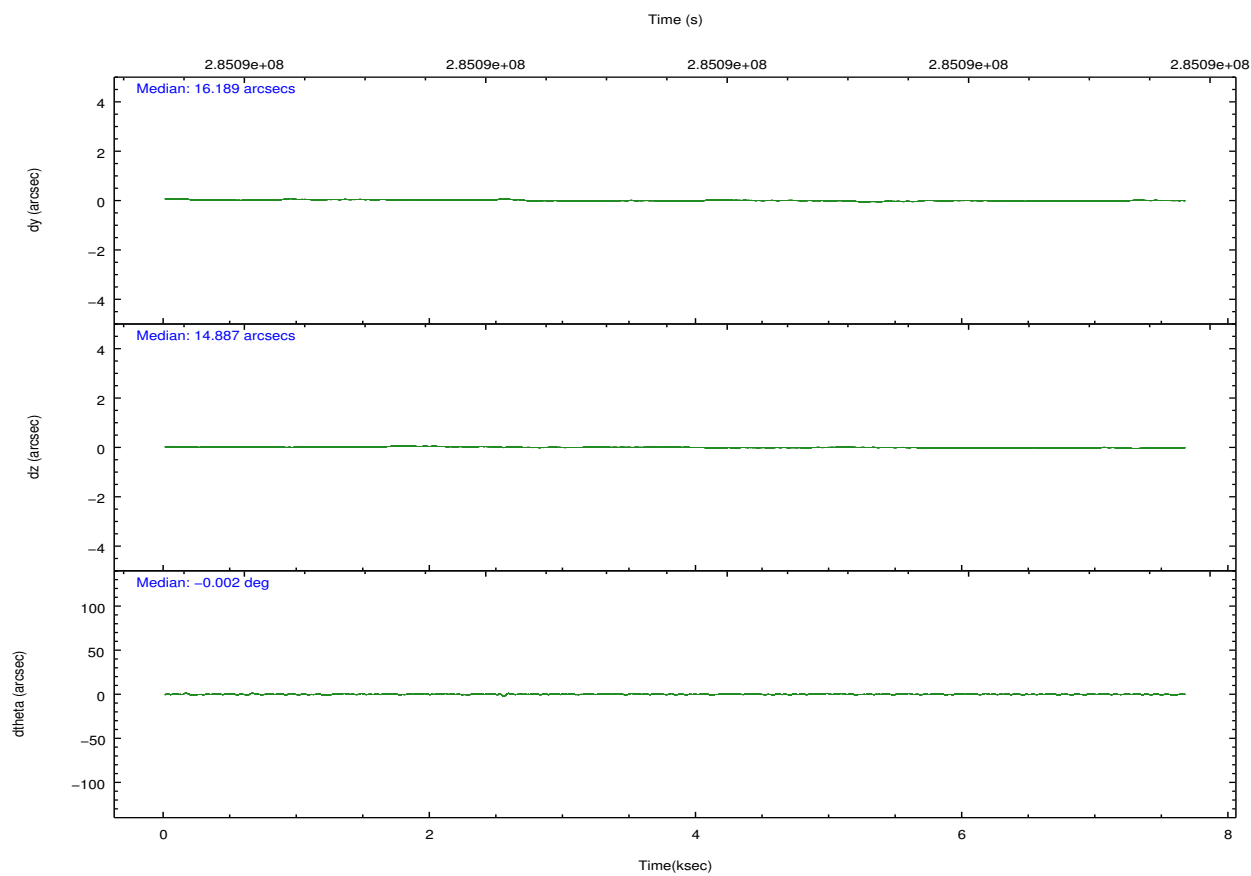
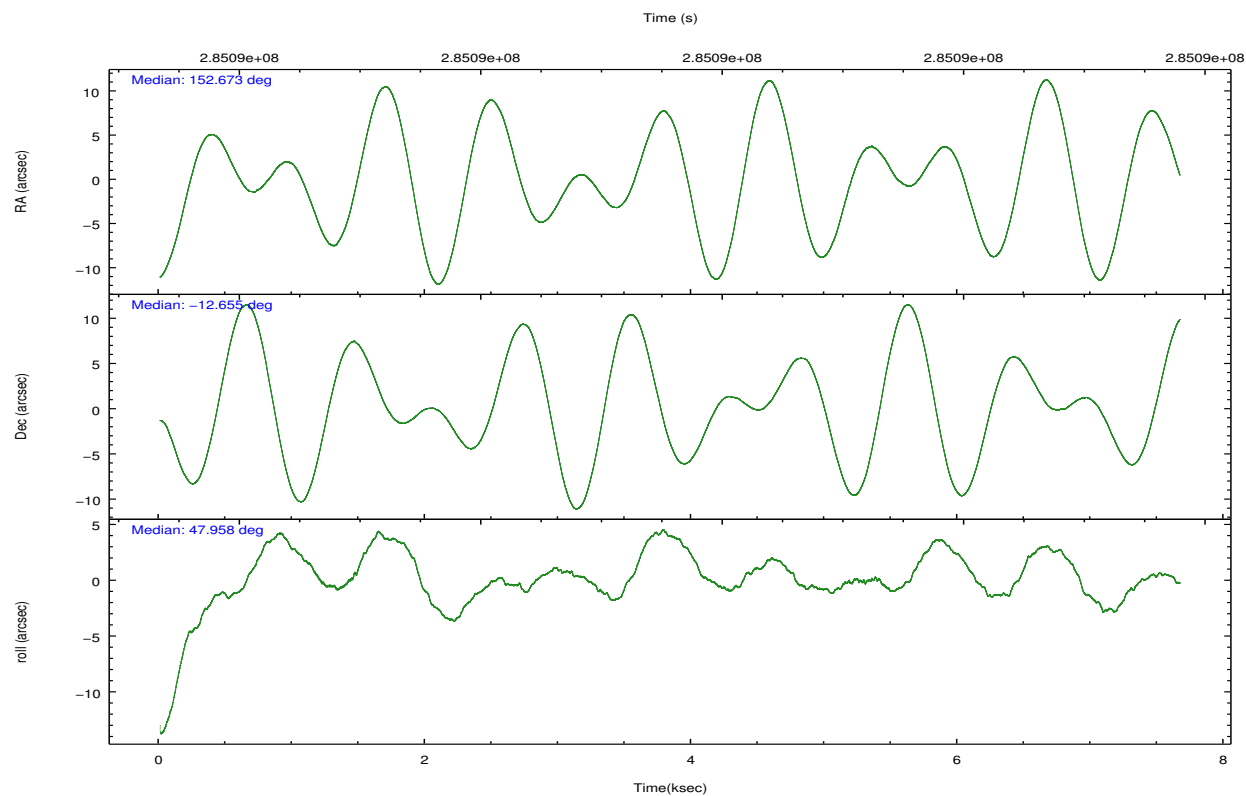
	ccd 0	ccd 1	ccd 2	ccd 3
grade 0 events	1699	1718	1684	2829
	3%	4%	3%	6%
grade 1 events	30	18	12	36
	0%	0%	0%	0%
grade 2 events	1017	954	972	957
	2%	2%	1%	2%
grade 3 events	488	511	418	482
	1%	1%	0%	1%
grade 4 events	483	519	391	485
	1%	1%	0%	1%
grade 5 events	743	867	736	914
	1%	2%	1%	1%
grade 6 events	577	733	607	660
	1%	1%	1%	1%
grade 7 events	39043	37236	46543	40256
	88%	87%	90%	86%

2.2 Compared Parameters

Parameter	Planned	Actual	Parameter	Planned	Actual
Instrument	ACIS	ACIS	Obspar format version number	7	7
Detector	ACIS-0123	ACIS-0123	Obspar file type	PREDICTED	ACTUAL
Grating	NONE	NONE	Obspar update status	NONE	UPDATED
Data mode	VFAINT	VFAINT	Number of optional ACIS chips dropped	0	0
Observation mode	POINTING	POINTING	On-chip summing requested	N	N
[deg] Pointing RA	152.666926	152.672694211445	Subarray requested	NONE	NONE
[deg] Pointing Dec	-12.682149	-12.65525689113749	Alternating exposures requested	N	N
[deg] Pointing Roll	47.752013	47.96197093798924	[s] Primary exposure time	0.000000	3.1
[mm] SIM focus pos	-0.782348	-0.7809083437167272			
[mm] SIM defocus	0	0.001439871863259334			
[mm] SIM translation stage pos	-233.592463	-233.5874344608287			
[mm] SIM translation stage offset	0	-0.005018542100998502			
[s] Observation start time (MET)	285086407.184000	285085296.65665			
Observation start date	2007-01-13T14:39:02	2007-01-13T14:21:36			
[s] Observation end time (MET)	285093407.184000	285093832.85706			
Observation end date	2007-01-13T16:35:42	2007-01-13T16:43:52			
Read mode	TIMED	TIMED			

2.3 Aspect



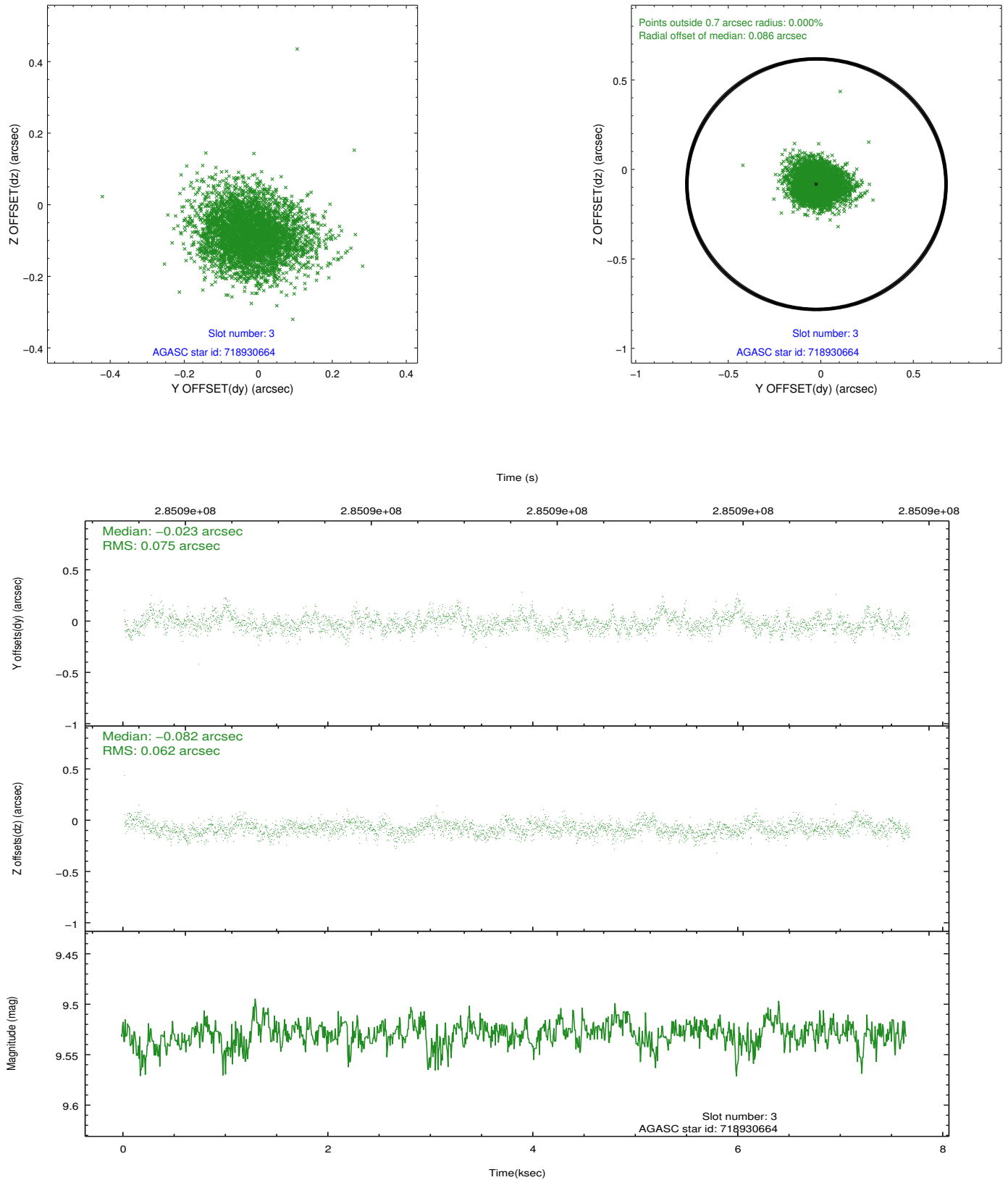


Slot Statistics

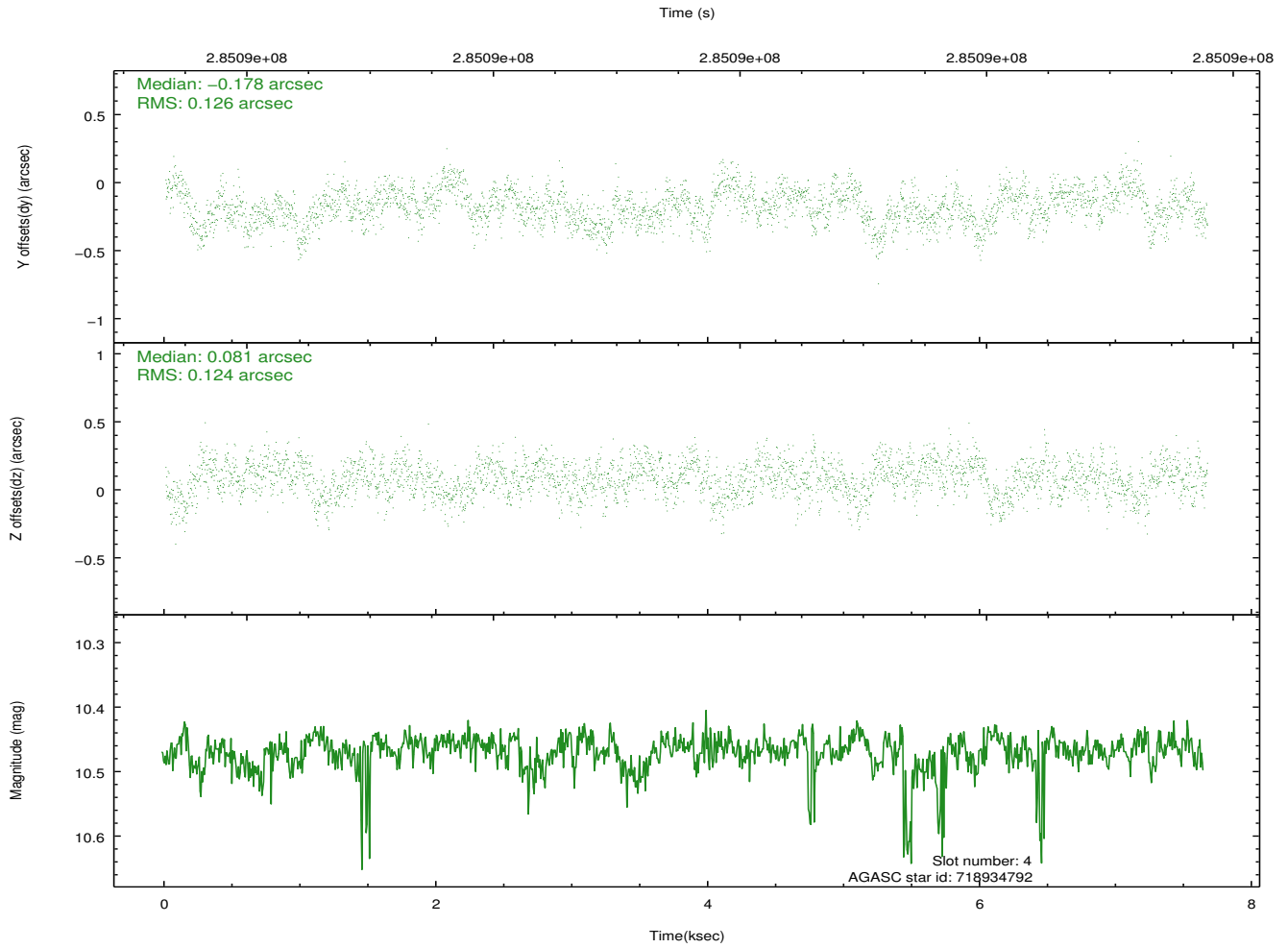
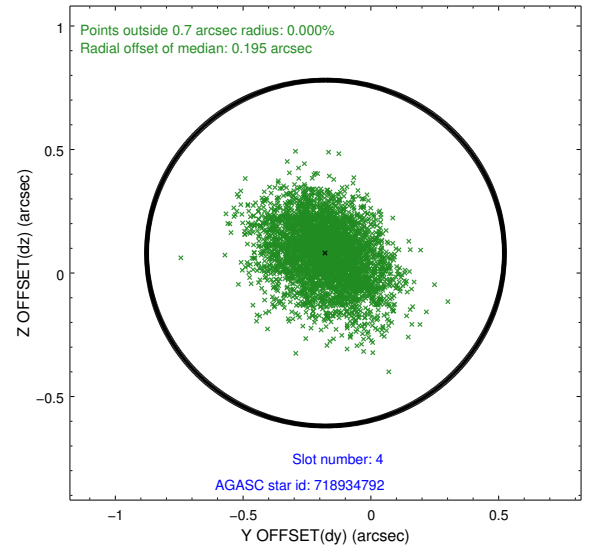
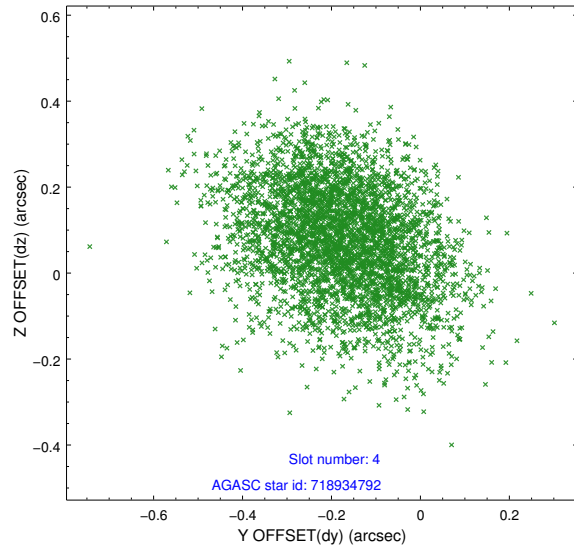
slot	status	id	mag	n_pts	med_dy	med_dz	dr1	dr2	ra	dec	mean_y	mean_z
0	FID	ACIS-I-1	7.24	1869	0.035	-0.013	0.006	0.011	0.000000	0.000000	923.27	-838.49
1	FID	ACIS-I-5	7.23	1870	-0.225	0.034	0.006	0.011	0.000000	0.000000	-1824.69	1058.67
2	FID	ACIS-I-6	7.25	1867	0.098	0.049	0.007	0.011	0.000000	0.000000	388.07	1704.03
3	GUIDE	718930664	9.53	3733	-0.023	-0.082	0.104	0.168	152.947671	-12.302372	1675.46	188.37
4	GUIDE	718934792	10.47	3731	-0.178	0.081	0.190	0.307	152.333114	-12.094893	774.55	2291.29
5	GUIDE	718937008	8.07	3739	-0.048	-0.068	0.066	0.108	152.146176	-12.520767	-802.21	1744.98
6	GUIDE	718933424	9.37	3733	0.159	0.070	0.091	0.150	152.090123	-13.050108	-2342.35	606.05
7	GUIDE	718934176	9.64	3734	0.089	-0.000	0.097	0.160	151.723284	-12.707763	-2301.52	2387.53

2.4 Star Slots

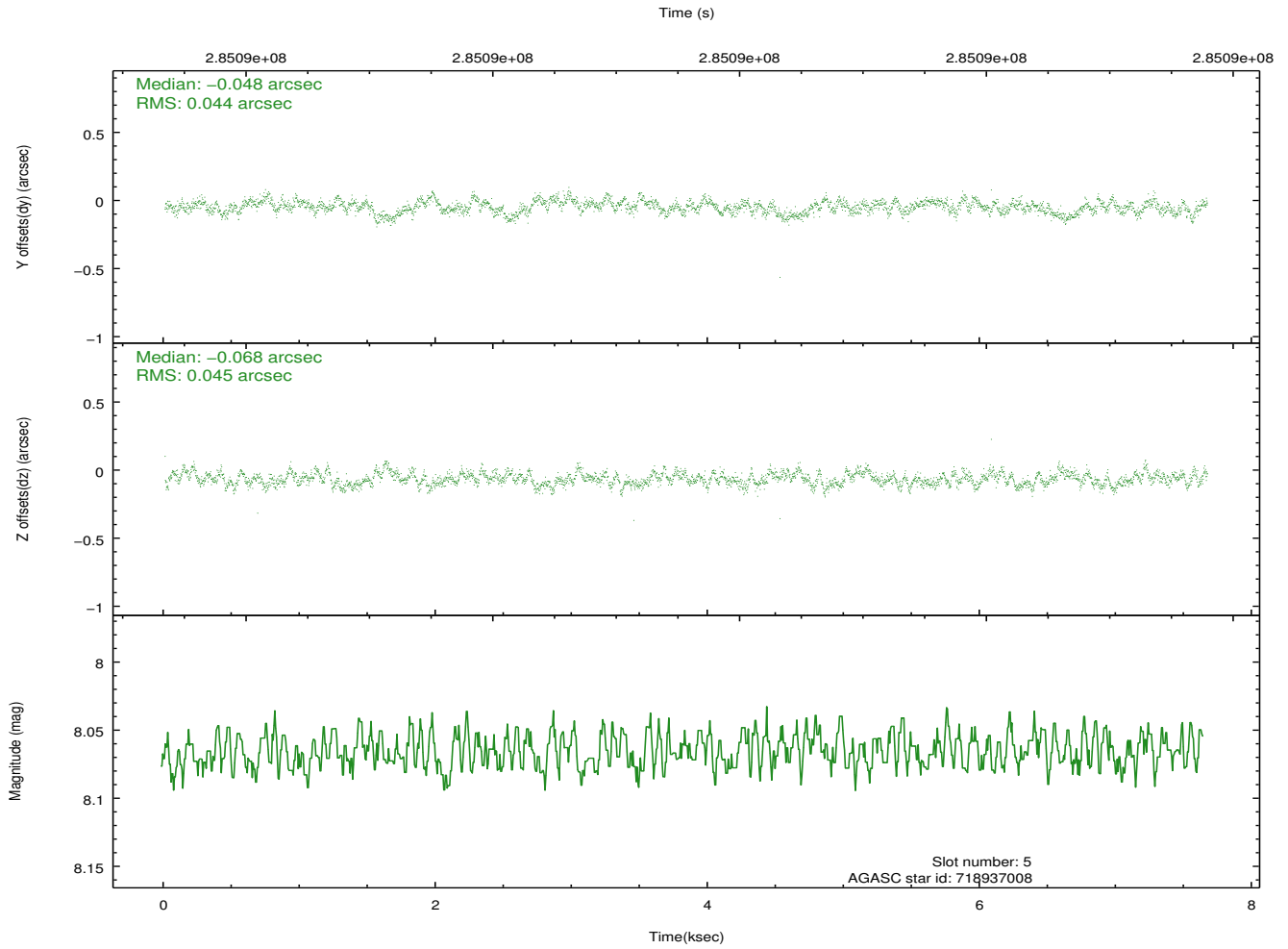
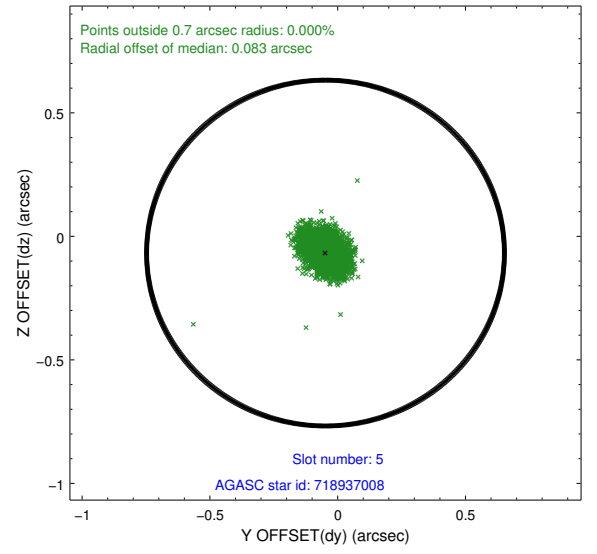
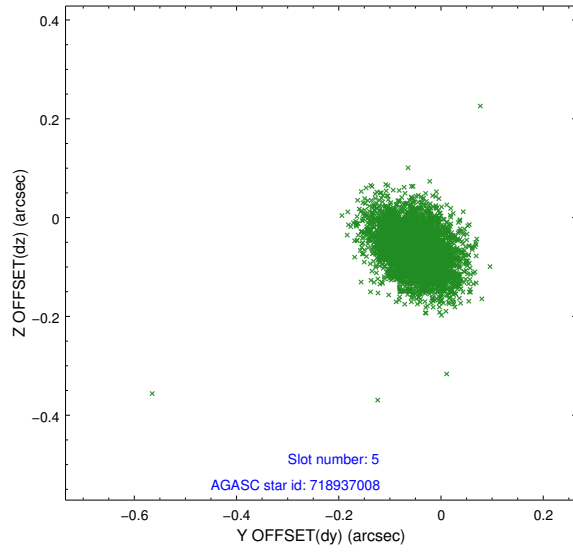
2.4.1 Slot 3



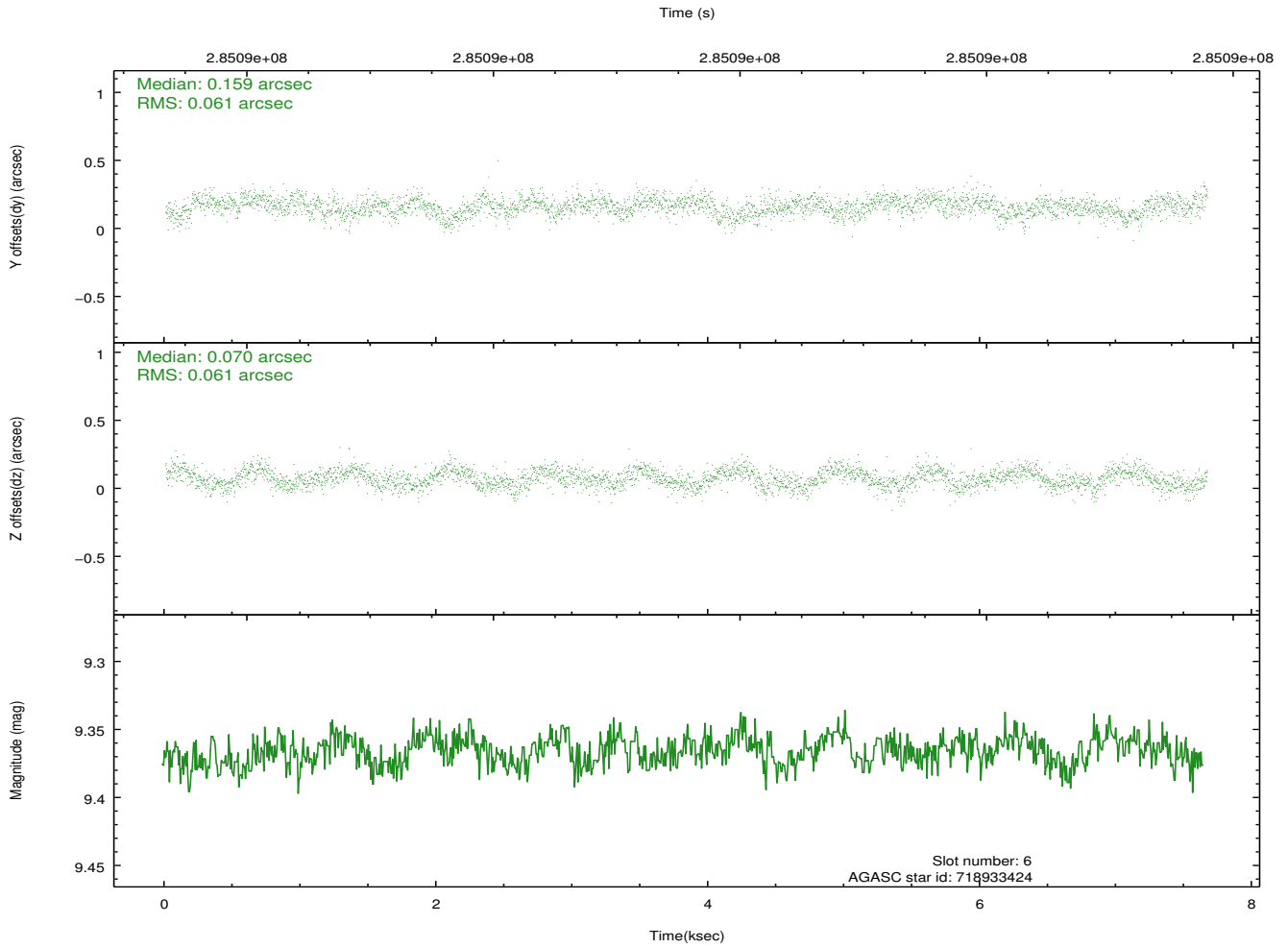
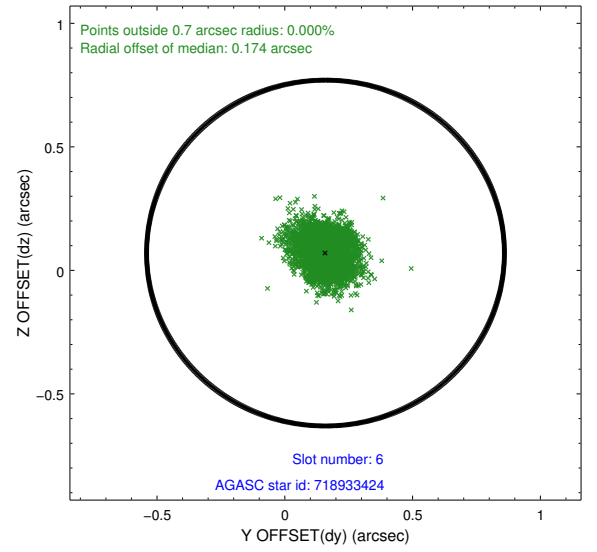
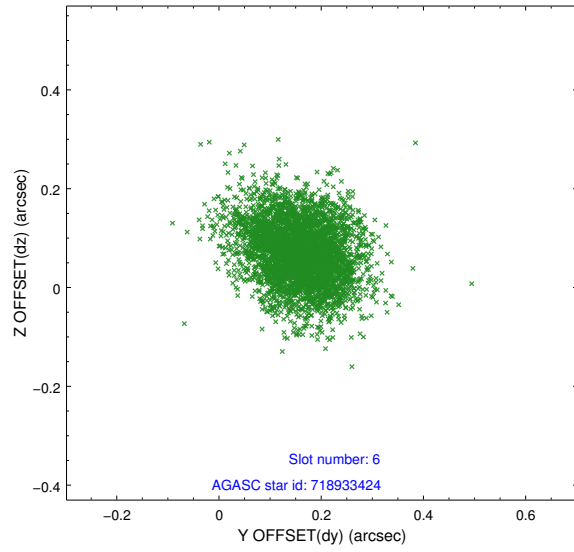
2.4.2 Slot 4



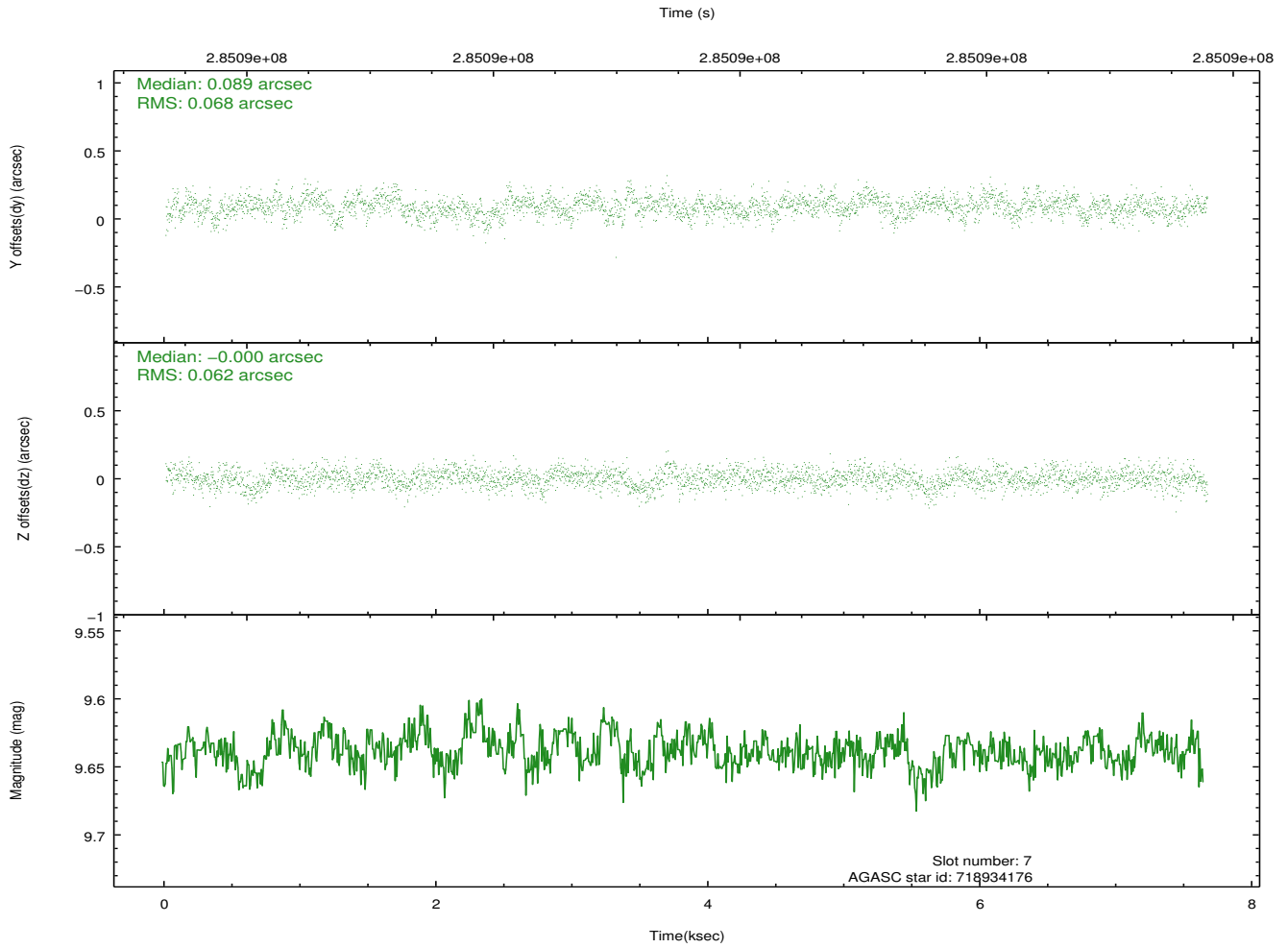
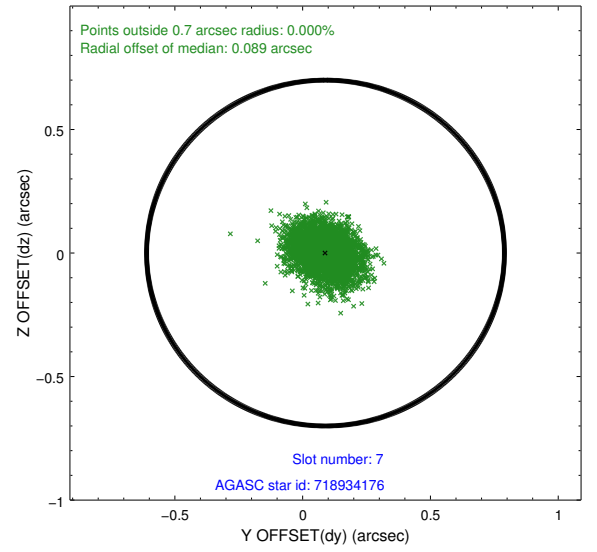
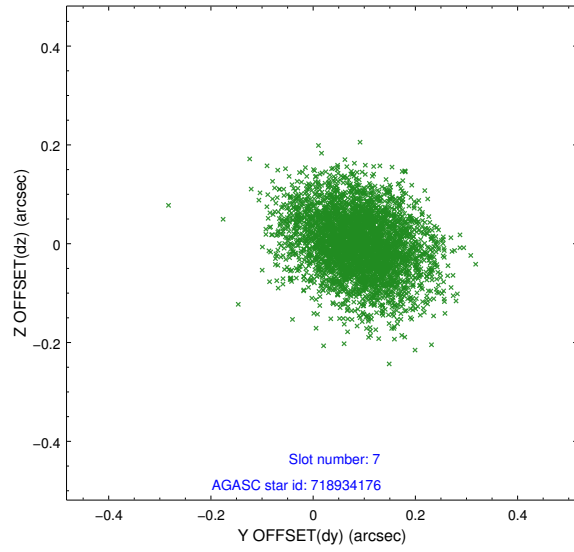
2.4.3 Slot 5



2.4.4 Slot 6

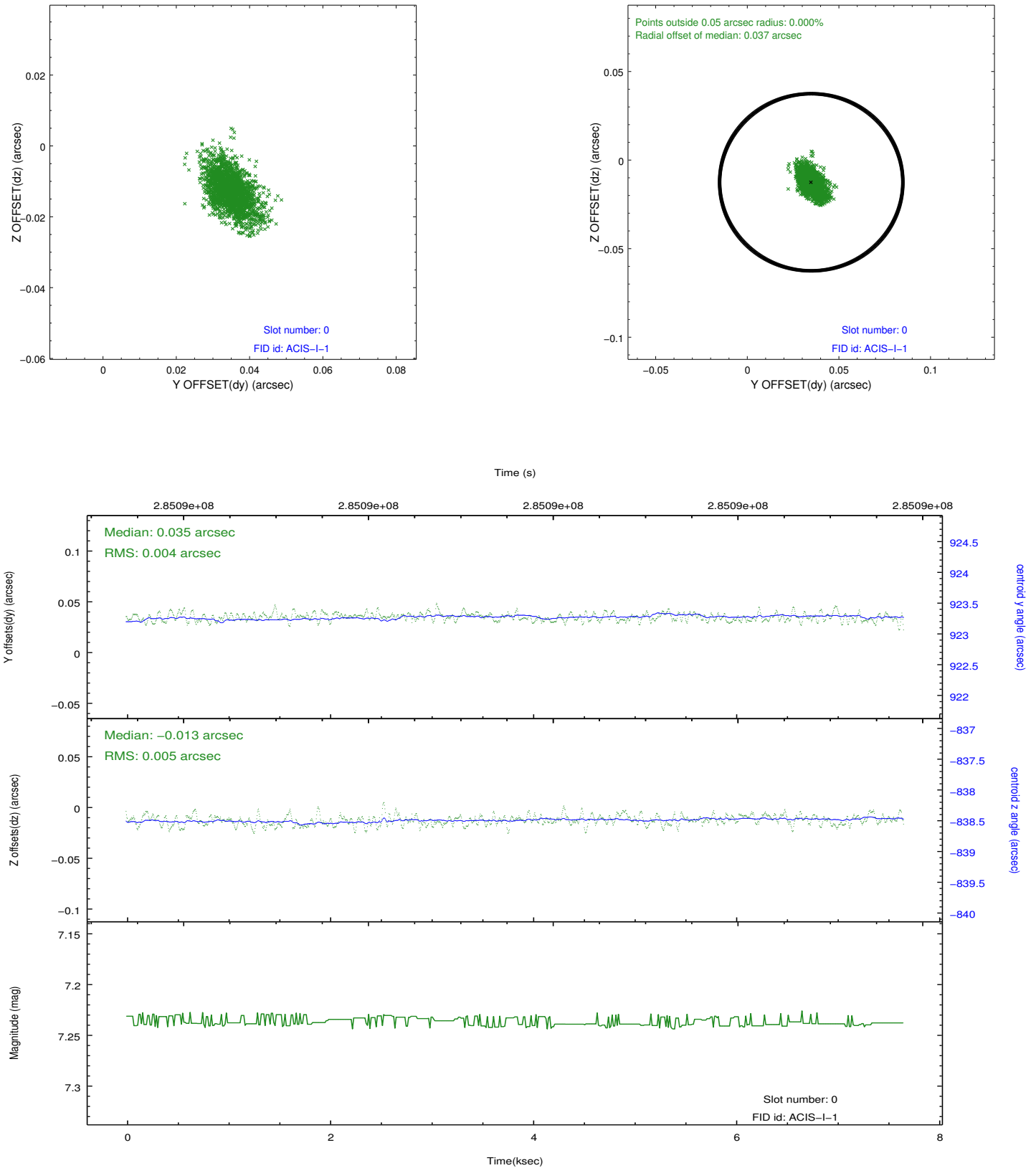


2.4.5 Slot 7

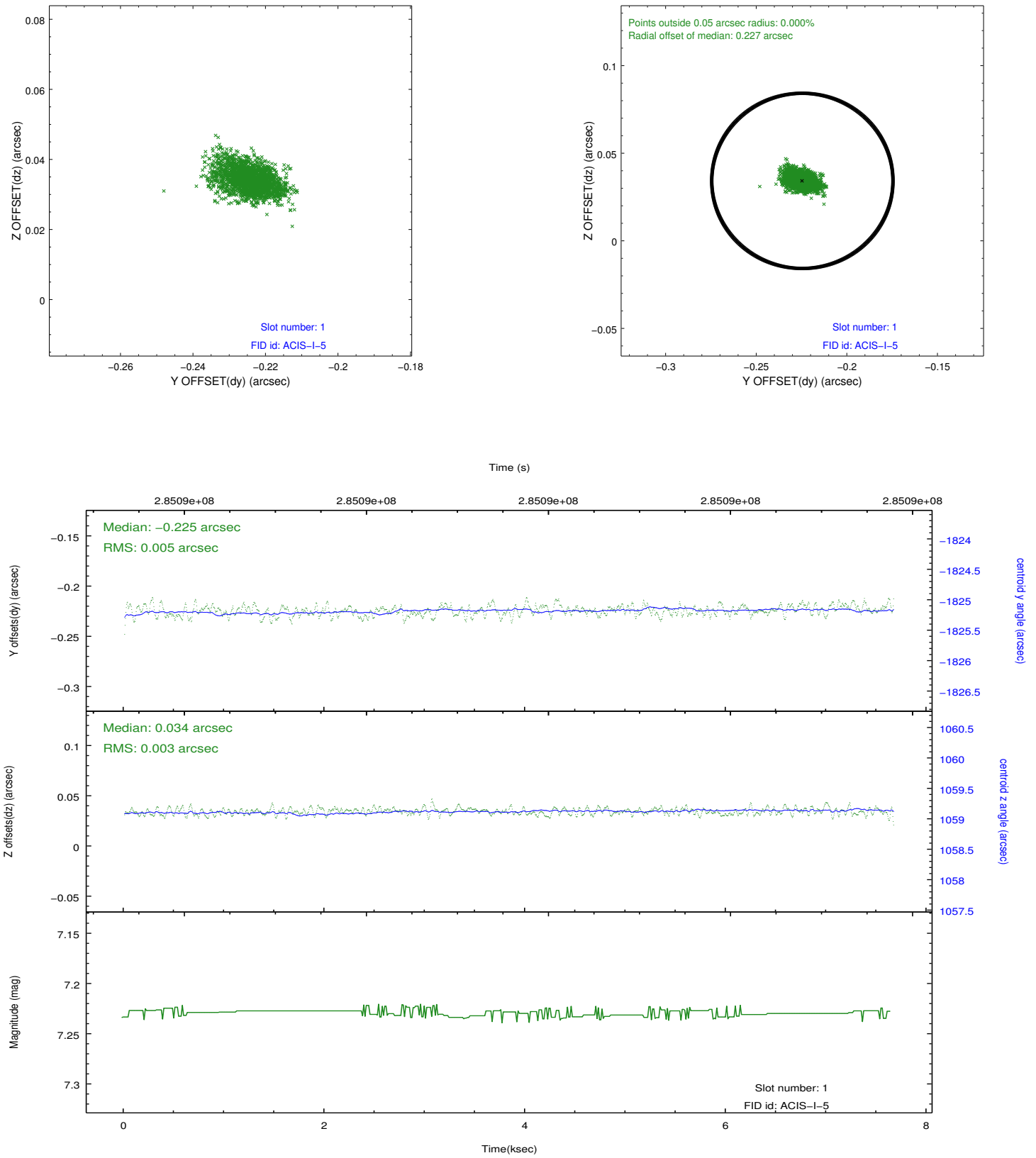


2.5 FID Slots

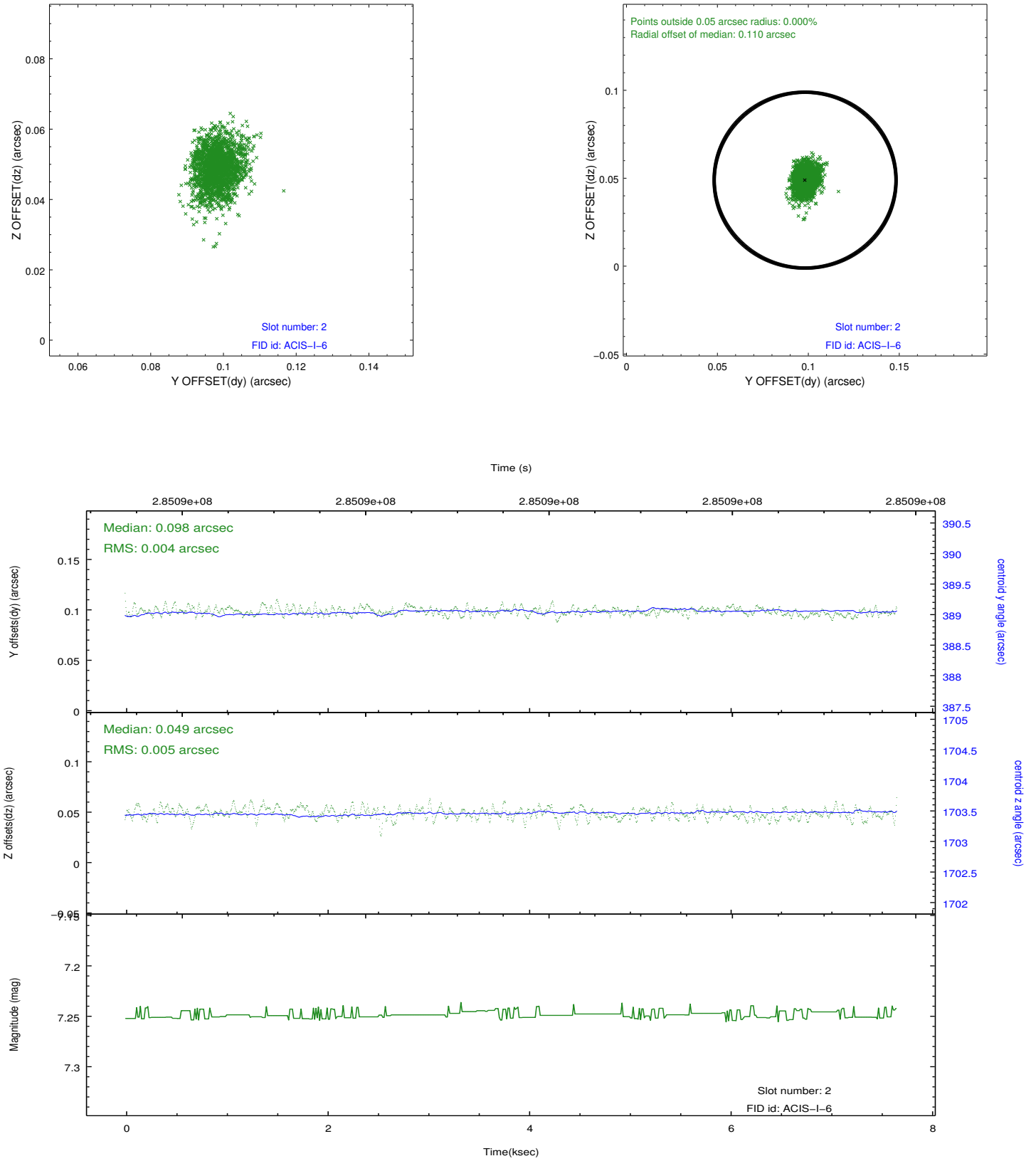
2.5.1 Slot 0



2.5.2 Slot 1



2.5.3 Slot 2



A Summary

A.1 Status

V&V Scientist	Beth Sundheim
V&V Date (YYYY-MM-DD)	2012.04.19
V&V Edition	1
V&V Disposition and Status	OK
V&V Charge Time	7.05560005

A.2 Comments