

V&V Reference Report

L2 ASCDS Version : 8.4.3

Observation 7251 - L2 Version 3
Chandra X-Ray Center

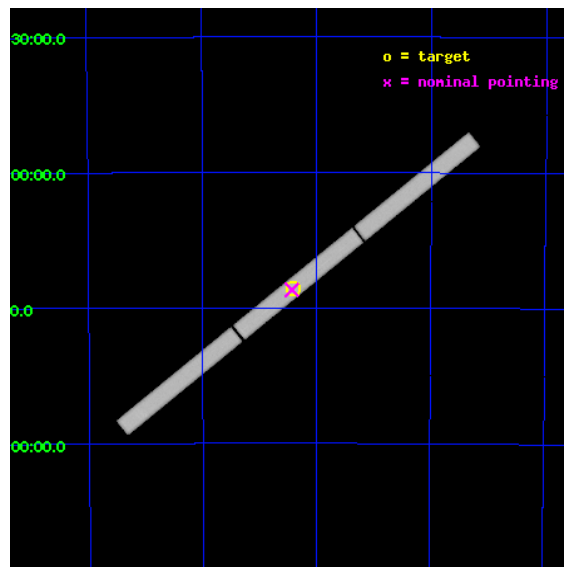
L2 Processing Date : Aug 11 2012

Contents

1	Front	2
2	OBI	3
2.1	OBI	3
2.1.1	Images	3
2.1.2	Parameters	4
2.1.3	Events	4
2.2	Compared Parameters	5
2.3	Aspect	6
2.4	Star Slots	9
2.4.1	Slot 3	9
2.4.2	Slot 4	10
2.4.3	Slot 5	11
2.4.4	Slot 6	12
2.4.5	Slot 7	13
2.5	FID Slots	14
2.5.1	Slot 0	14
2.5.2	Slot 1	15
2.5.3	Slot 2	16
3	Gratings	17
3.1	LETG Arm	17
A	Summary	19
A.1	Status	19
A.2	Comments	19

1 Front

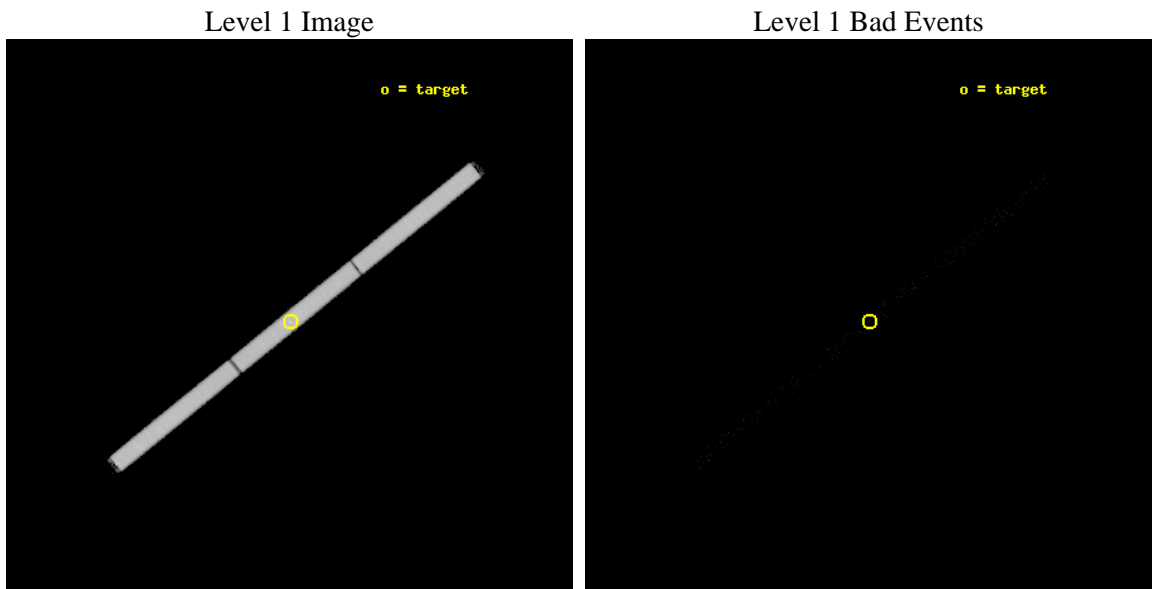
seq_num	500573	Sequence number
obs_id	7251	Observation id
title	Spectra of Neutron Stars with Strongly Magnetized Hydrogen Atmospheres	Proposal title
observer	Prof. Marten van Kerkwijk	Principal investigator
object	RX J0720.4-3125	Source name
ra_targ	110.104167	Observer's specified target RA [deg]
dec_targ	-31.430611	Observer's specified target Dec [deg]
ra_nom	110.10822525529	Nominal RA [deg]
dec_nom	-31.433568346531	Nominal Dec [deg]
roll_nom	320.97786038383	Nominal Roll [deg]
revision	3	Processing version of data
ontime	10650.775494516	[s]
livetime	10561.386706377	Ontime multiplied by DTCOR
l2events	741140	Number of level 2 events



2 OBI

2.1 OBI

2.1.1 Images



2.1.2 Parameters

obi_num	0	Obi number	sched_exp_time	10465.130000	[s] Scheduled observation exposure time
ascdsver	8.4.5	Processing system revision	ontime	10650.775494516	[s]
caldsver	4.5.1.1	 	l1events	1040087	Number of level 1 events
date	2012-08-11T01:02:16	Date and time of file creation			
revision	3	Processing version of data			

2.1.3 Events

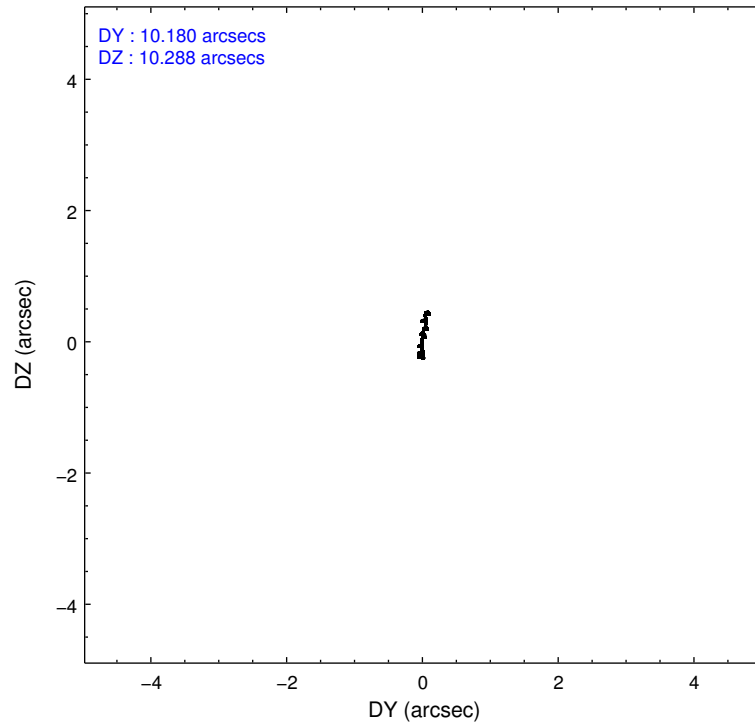
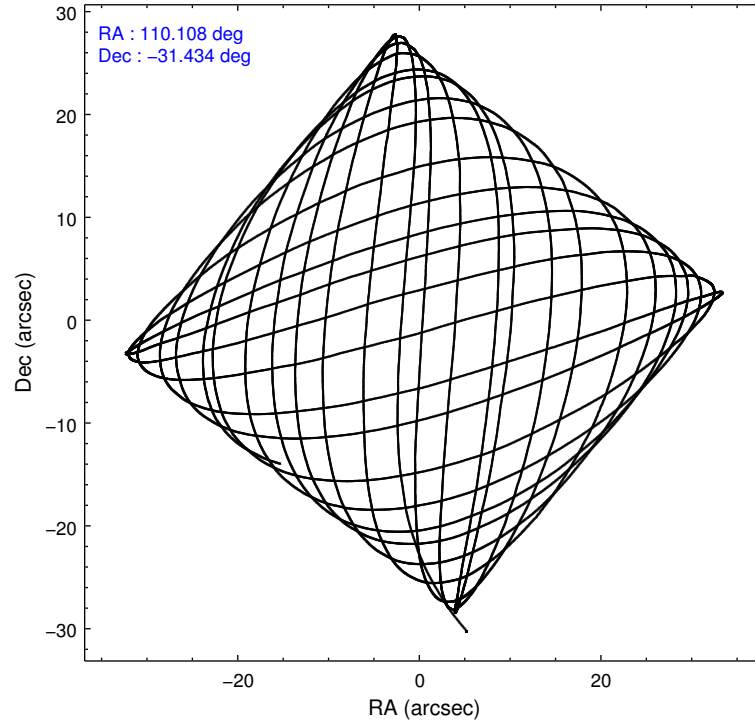
Level 1 Events

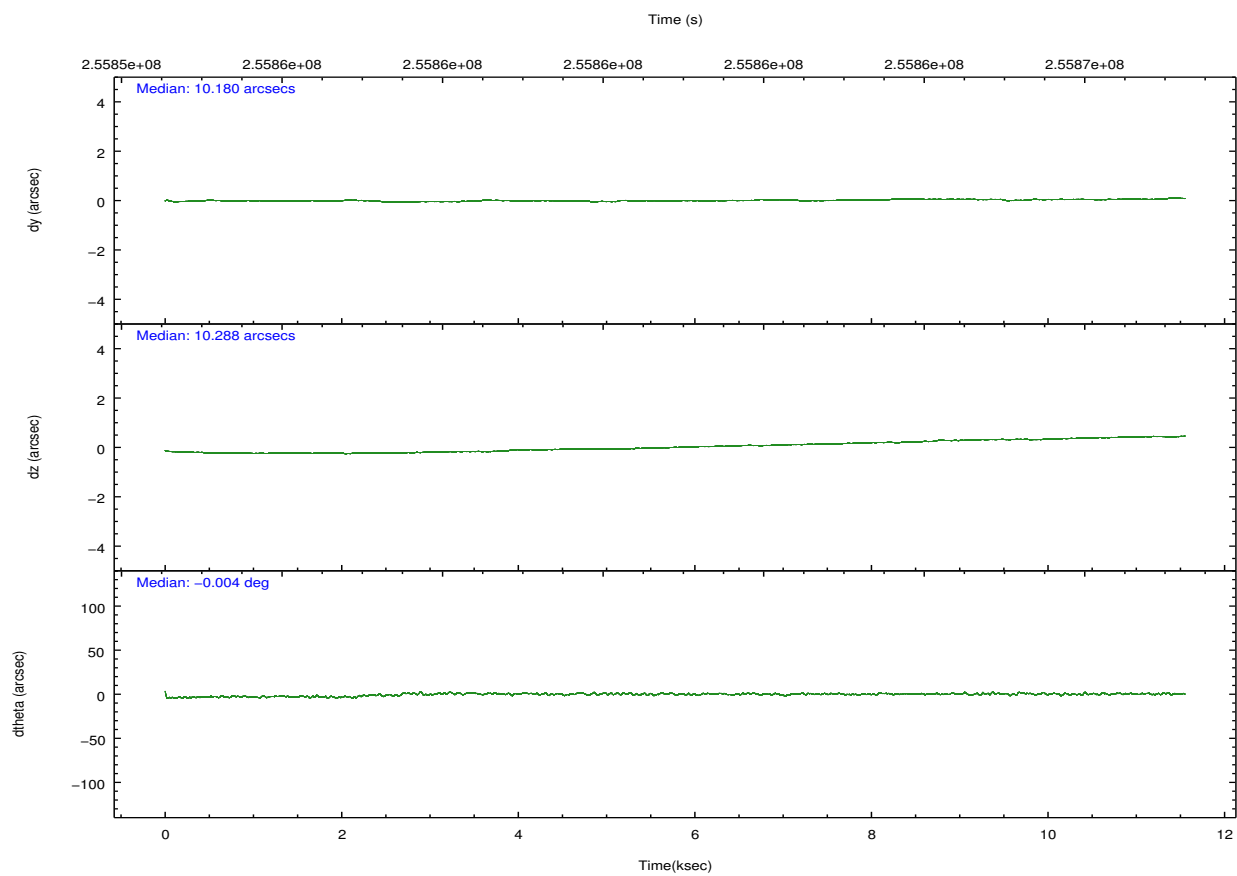
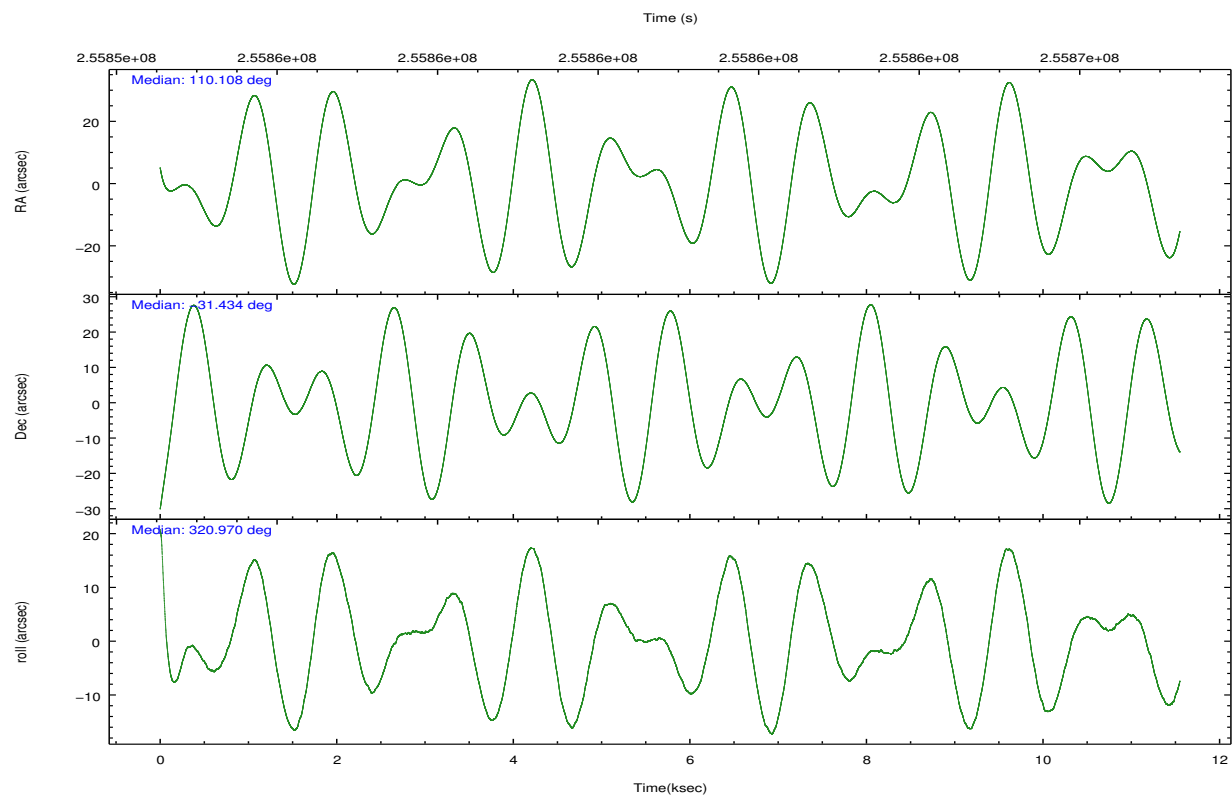
	segment 1	segment 2	segment 3
level 1 events	348036	340790	351261
rejected events	17263	16999	17633
rejected %	4%	4%	5%

2.2 Compared Parameters

Parameter	Planned	Actual	Parameter	Planned	Actual
Instrument	HRC	HRC	Obspar format version number	7	7
Detector	HRC-S	HRC-S	Obspar file type	PREDICTED	ACTUAL
Grating	LETG	LETG	Obspar update status	NONE	UPDATED
Data mode	OBSERVING	OBSERVING			
Observation mode	POINTING	POINTING			
[deg] Pointing RA	110.075005	110.1082252552898			
[deg] Pointing Dec	-31.430576	-31.43356834653135			
[deg] Pointing Roll	320.893177	320.9778603838306			
[mm] SIM focus pos	-1.429586	-1.428180813131781			
[mm] SIM defocus	0.1037507710433287	0.1051558262725154			
[mm] SIM translation stage pos	250.455976	250.466033080201			
[mm] SIM translation stage offset	0	-0.01005468664627074			
[s] Observation start time (MET)	255855306.184000	255854554.89829			
Observation start date	2006-02-09T06:54:01	2006-02-09T06:42:34			
[s] Observation end time (MET)	255865771.184000	255867189.56138			
Observation end date	2006-02-09T09:48:26	2006-02-09T10:13:09			

2.3 Aspect



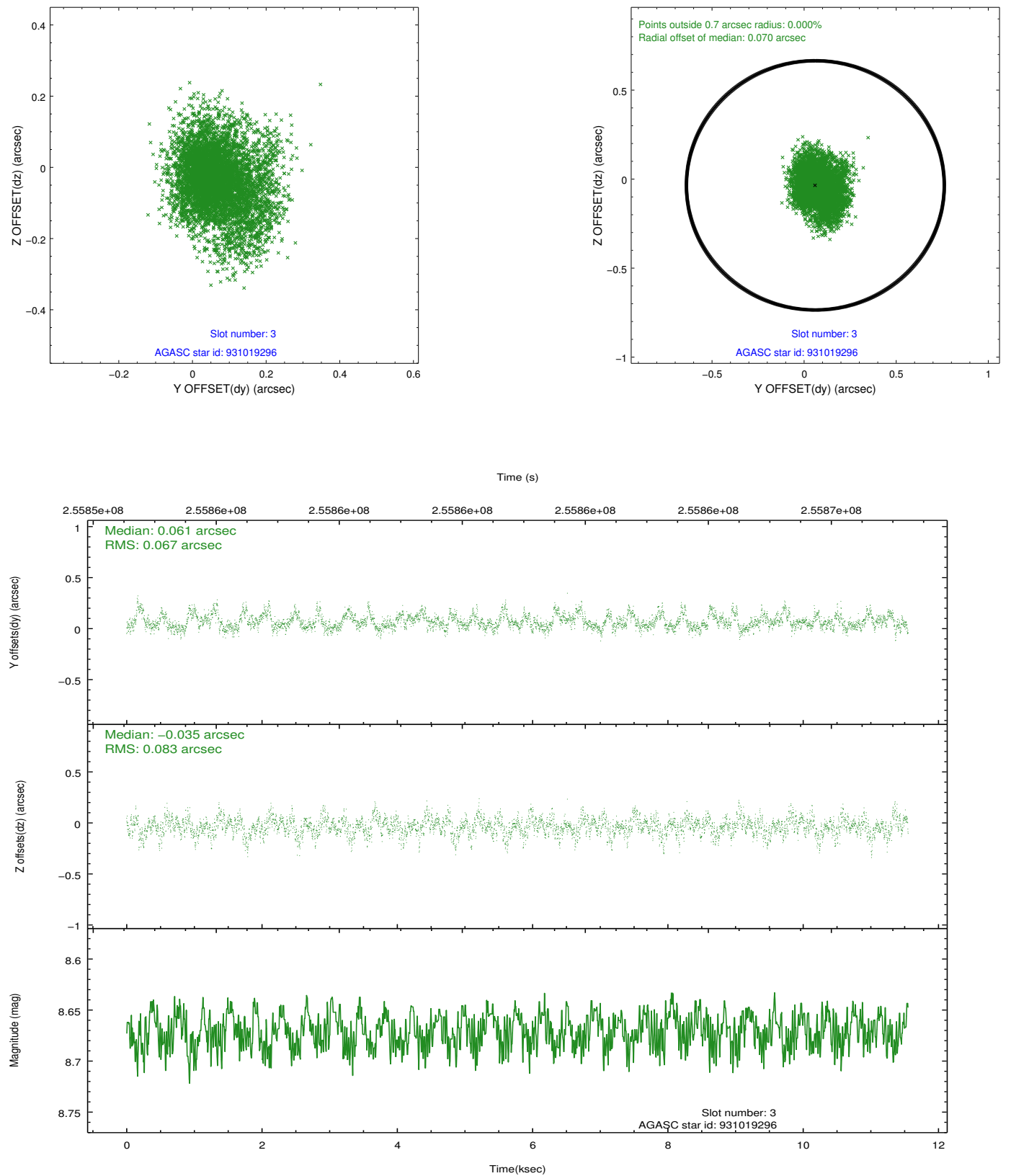


Slot Statistics

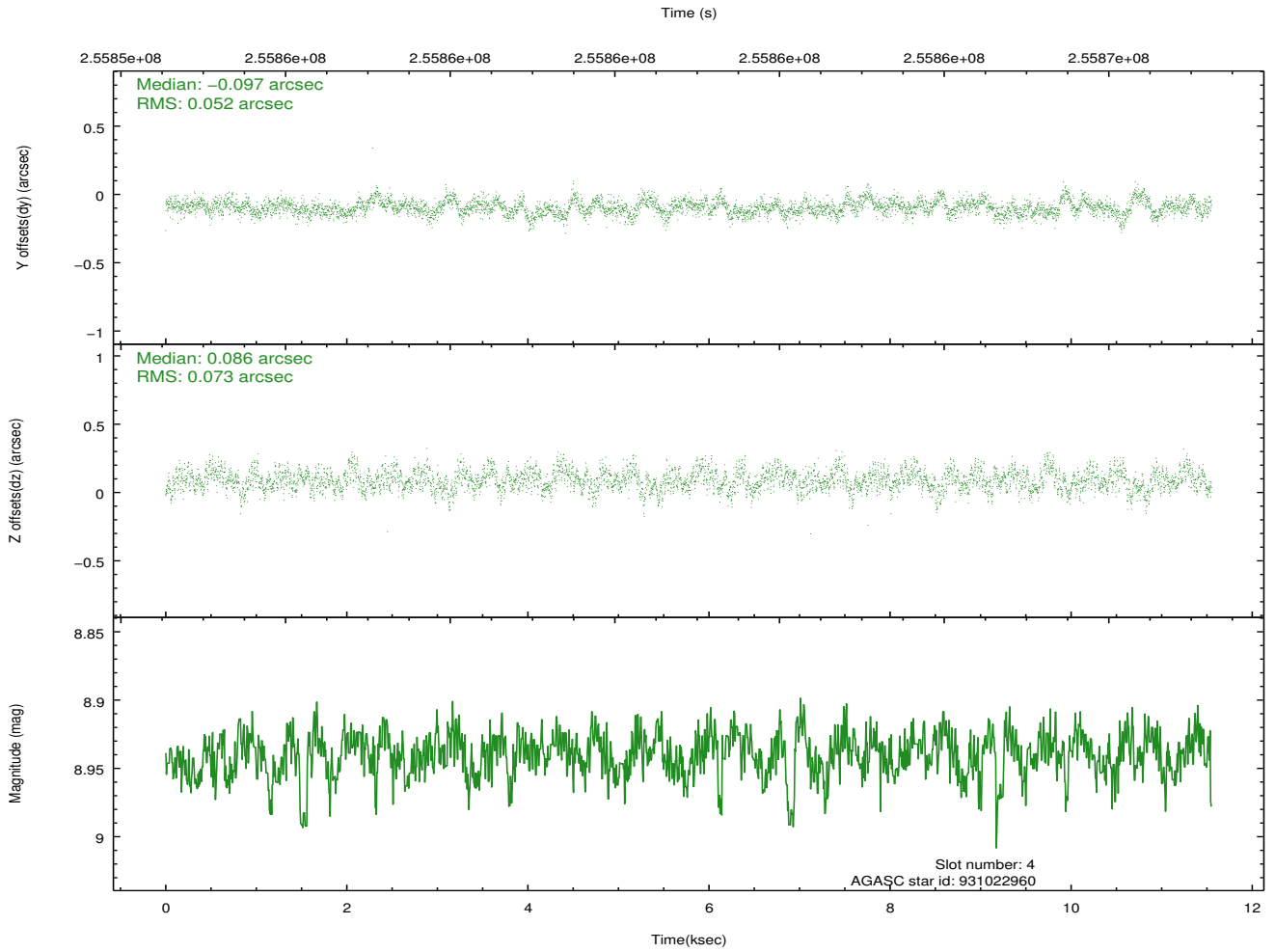
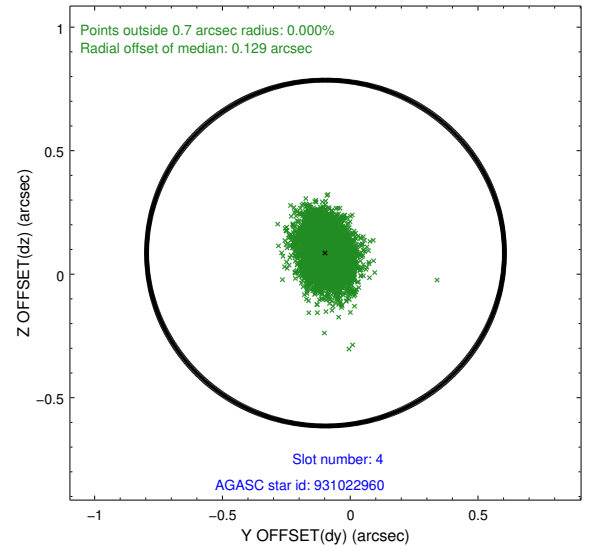
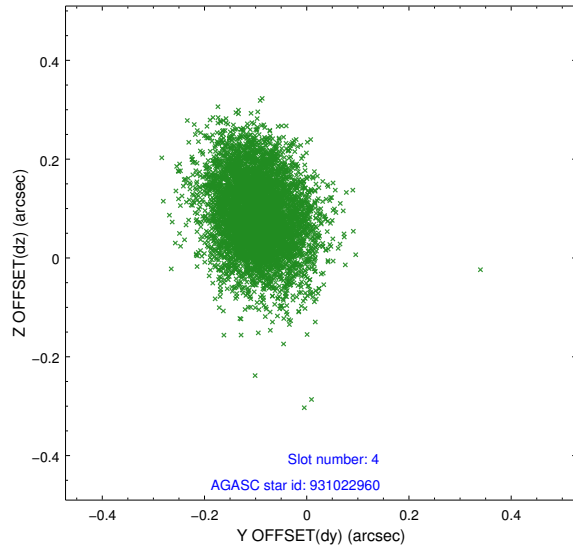
slot	status	id	mag	n_pts	med_dy	med_dz	dr1	dr2	ra	dec	mean_y	mean_z
0	FID	HRC-S-1	7.03	2818	0.077	-0.133	0.008	0.016	0.000000	0.000000	-1164.47	-459.02
1	FID	HRC-S-2	7.02	2818	0.121	-0.126	0.013	0.025	0.000000	0.000000	1234.85	-451.78
2	FID	HRC-S-4	6.99	2818	0.206	-0.045	0.013	0.025	0.000000	0.000000	1234.34	573.03
3	GUIDE	931019296	8.67	5636	0.061	-0.035	0.110	0.196	109.471771	-31.694370	-830.39	-1906.67
4	GUIDE	931022960	8.94	5629	-0.097	0.086	0.094	0.158	109.733092	-31.864448	175.87	-1872.66
5	GUIDE	931160352	8.64	5633	-0.041	-0.093	0.078	0.126	110.268138	-30.864891	-820.73	1956.06
6	GUIDE	931163512	8.46	5631	0.082	0.033	0.075	0.122	110.894384	-31.299941	1665.61	1948.36
7	GUIDE	931012368	8.76	5631	-0.013	0.010	0.091	0.144	109.359817	-31.783345	-891.34	-2371.02

2.4 Star Slots

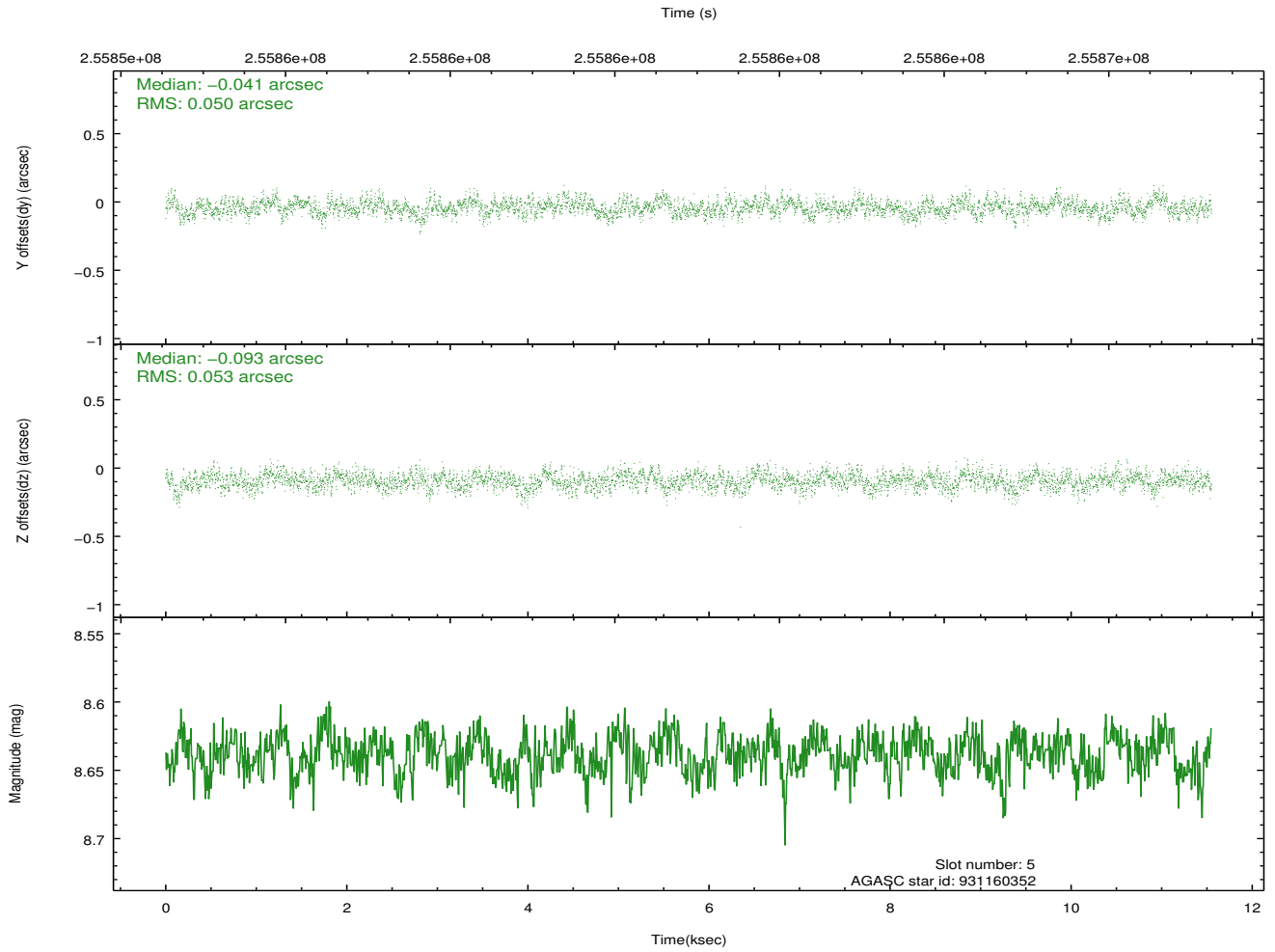
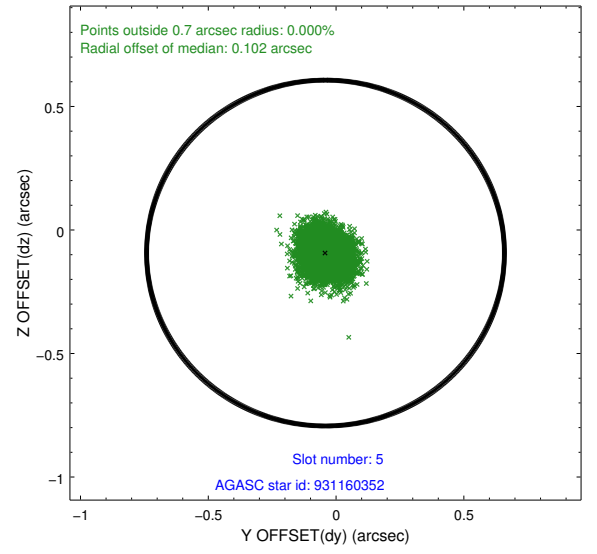
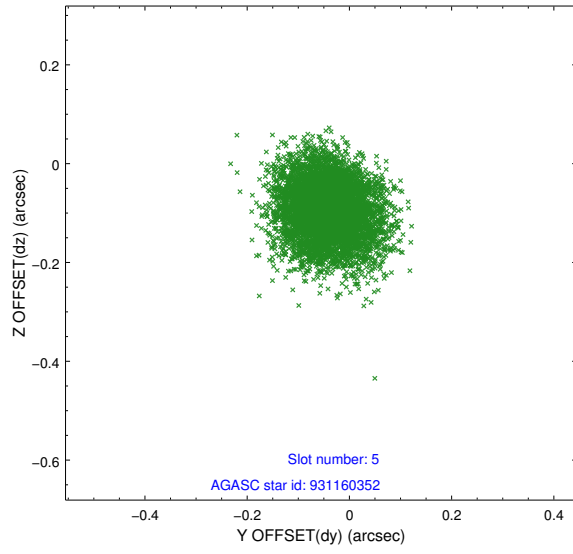
2.4.1 Slot 3



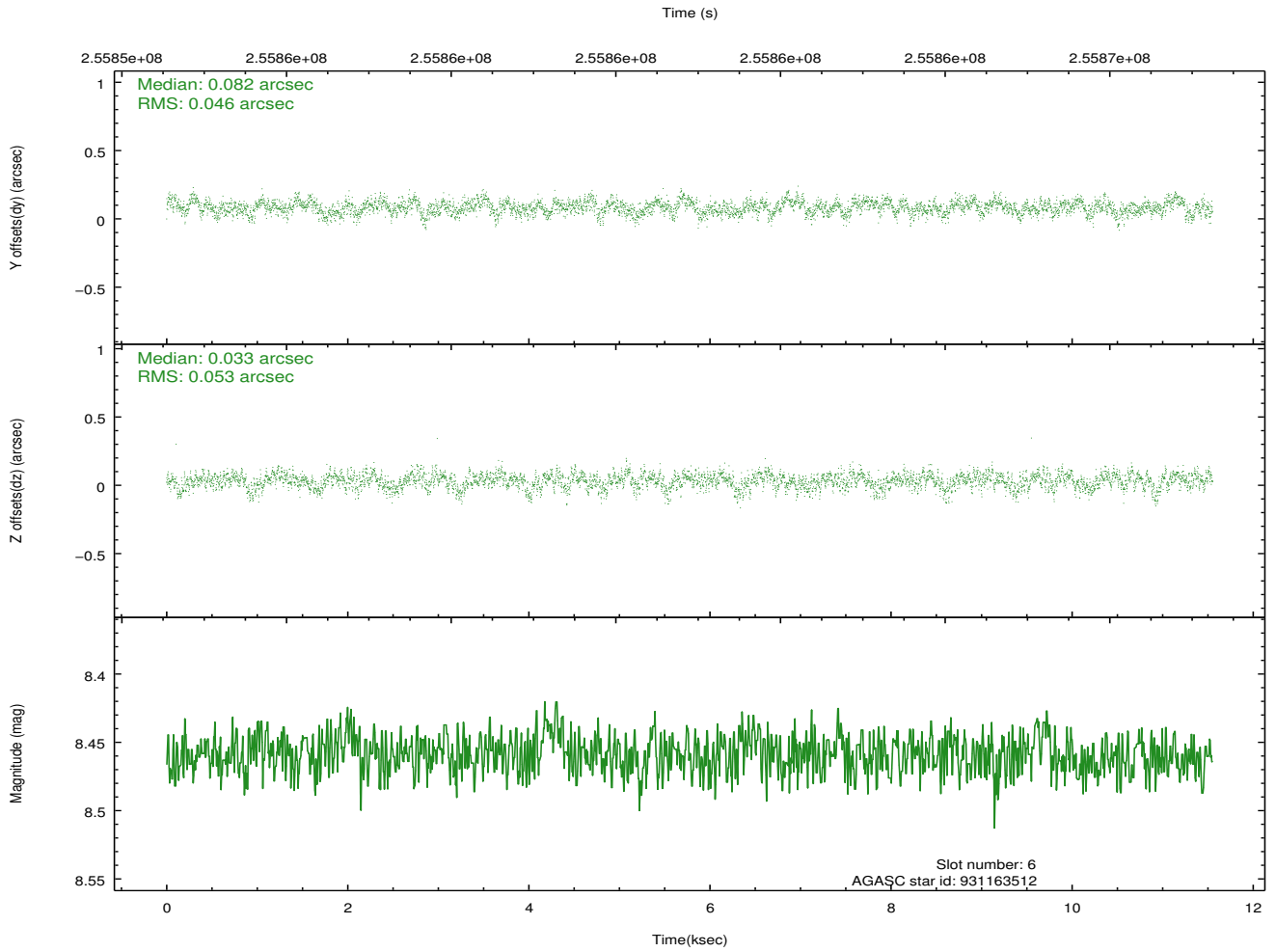
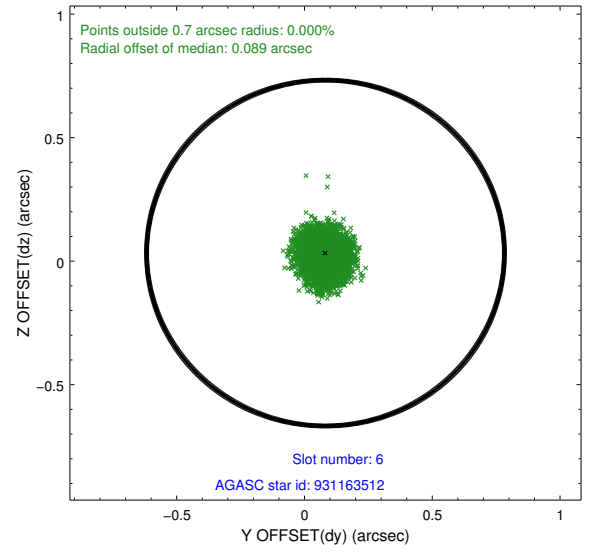
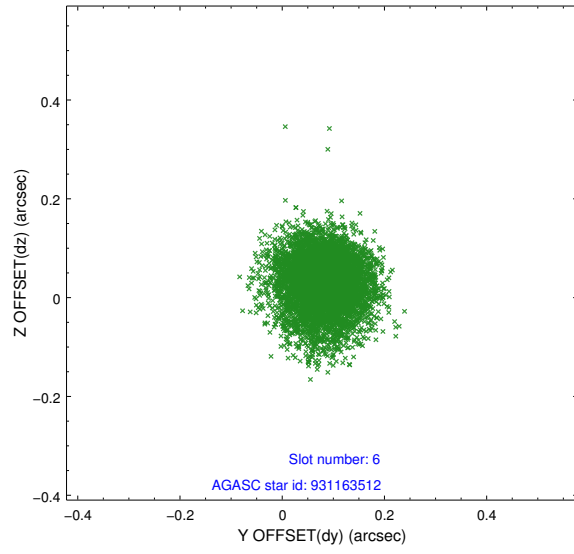
2.4.2 Slot 4



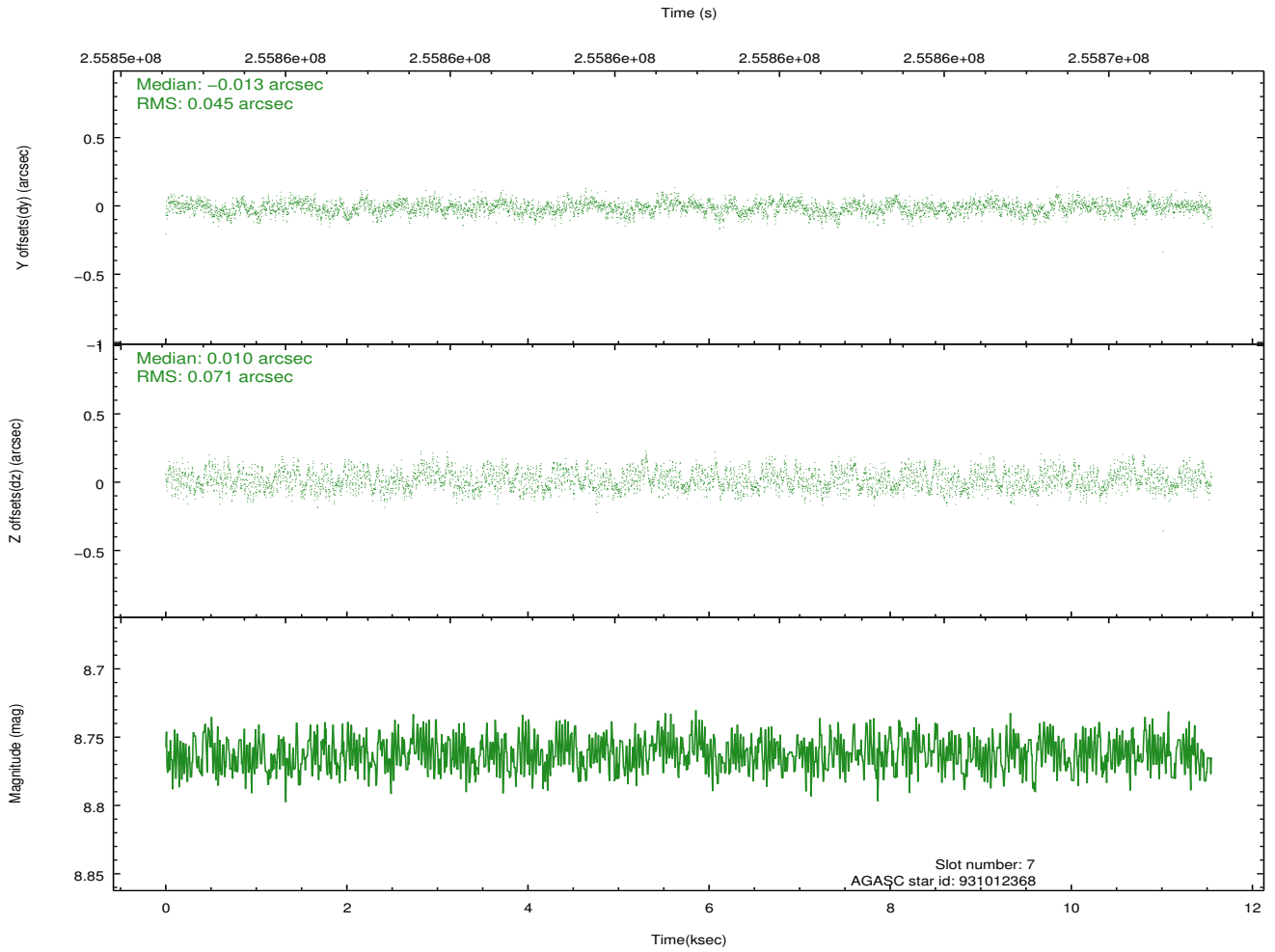
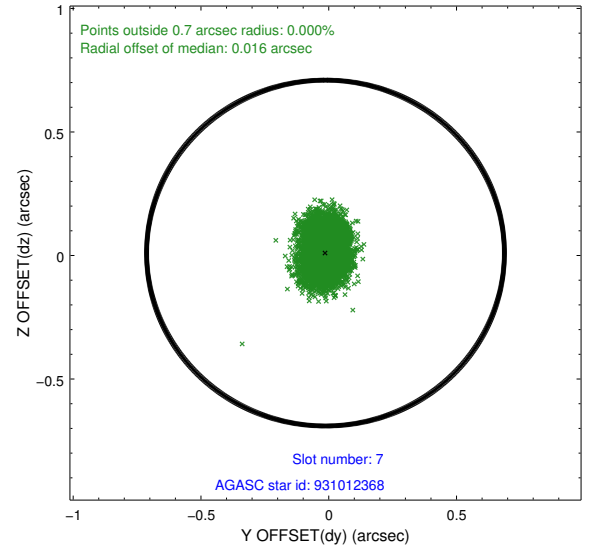
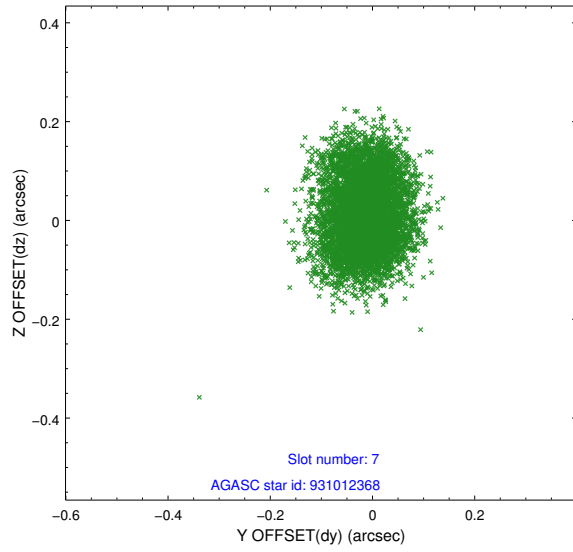
2.4.3 Slot 5



2.4.4 Slot 6

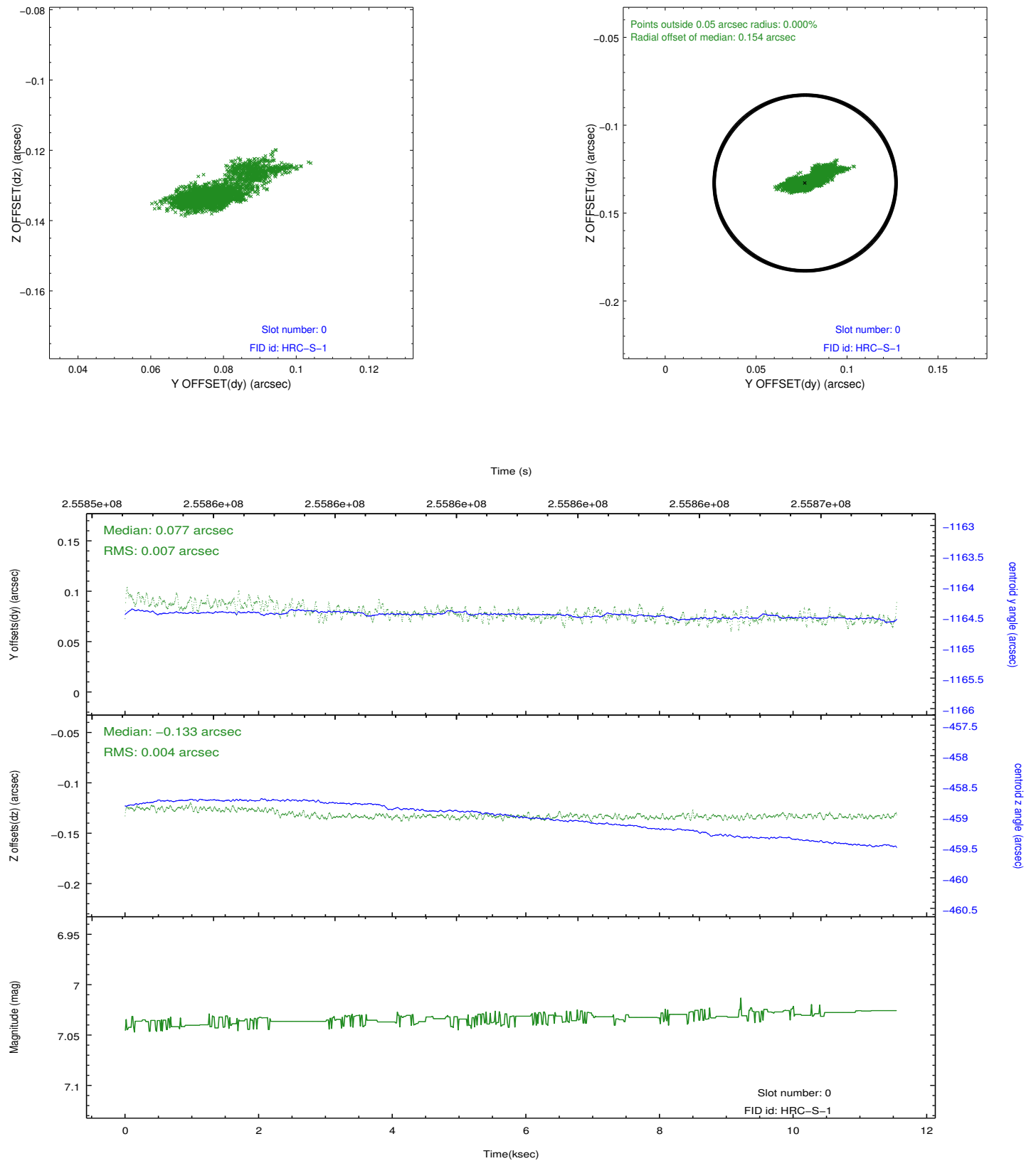


2.4.5 Slot 7

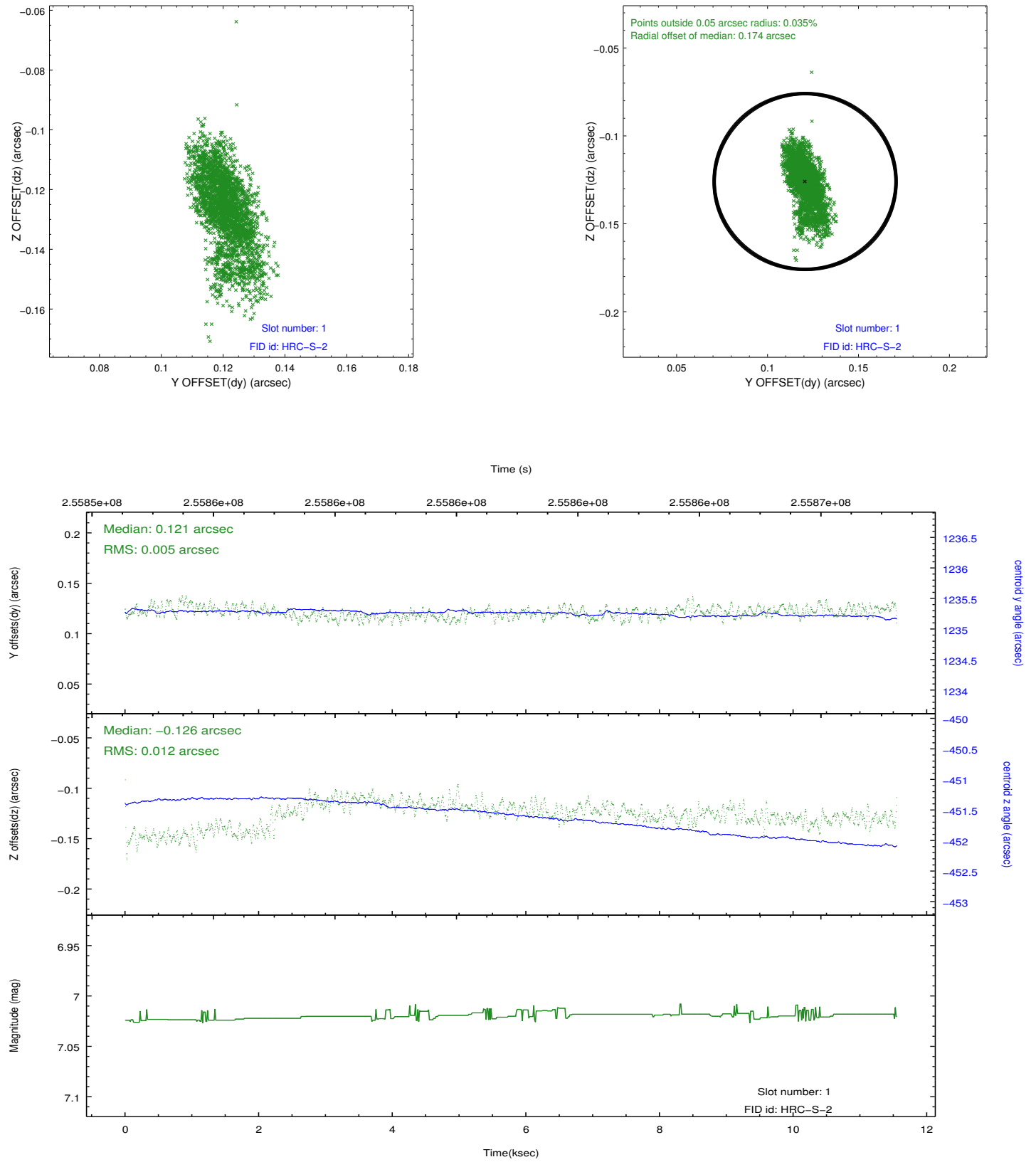


2.5 FID Slots

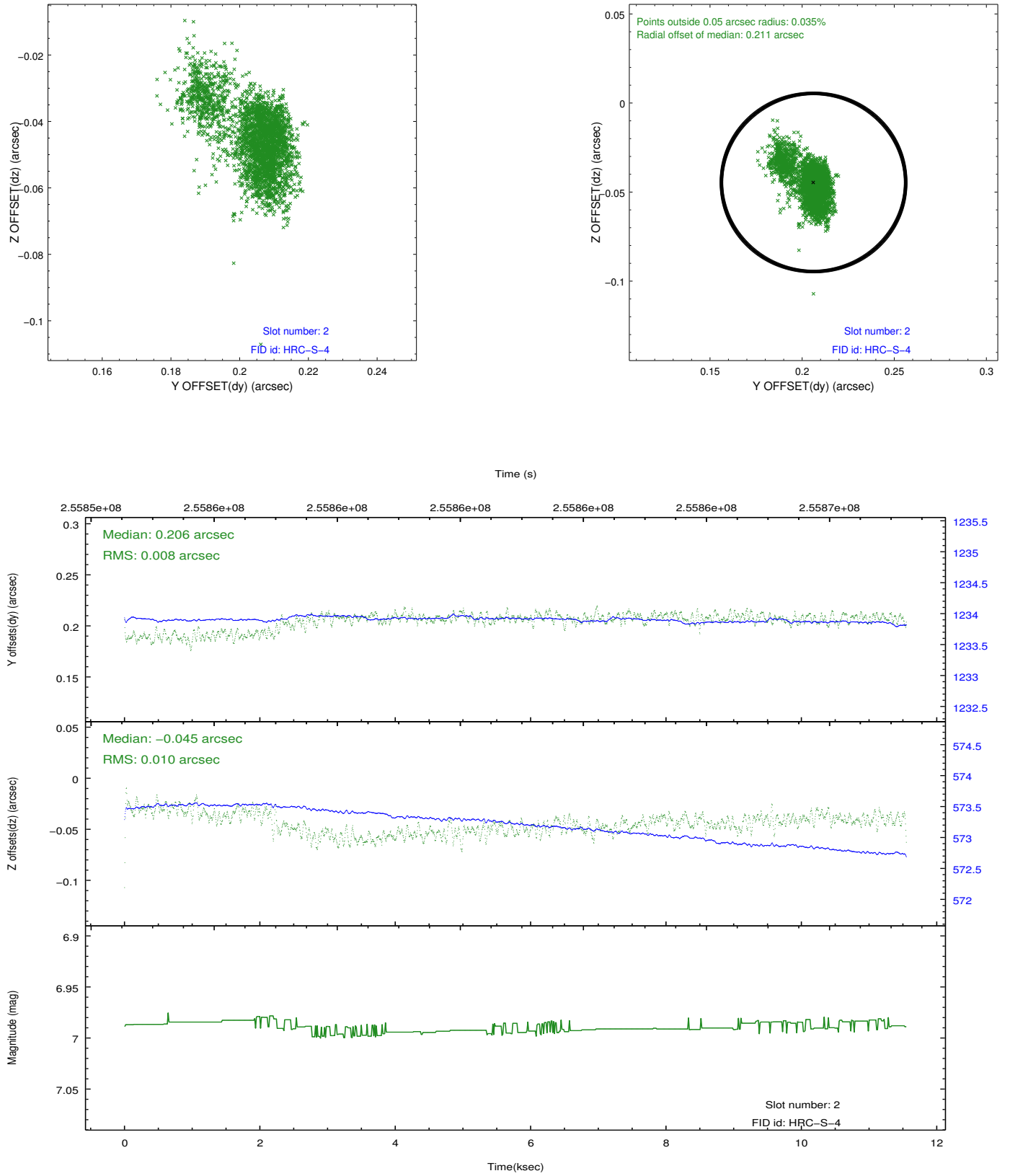
2.5.1 Slot 0



2.5.2 Slot 1

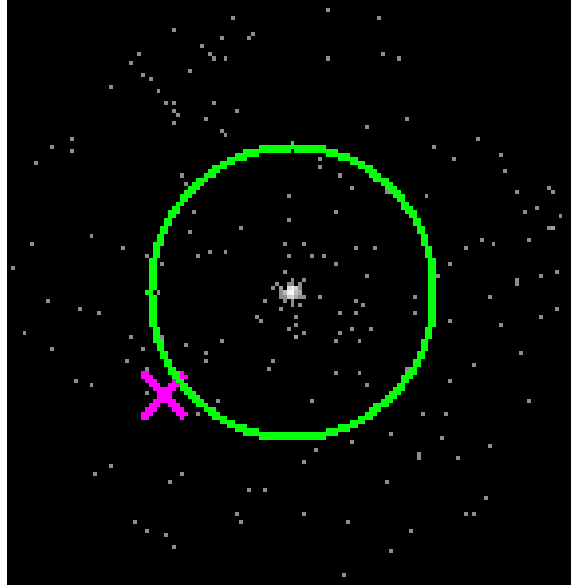


2.5.3 Slot 2

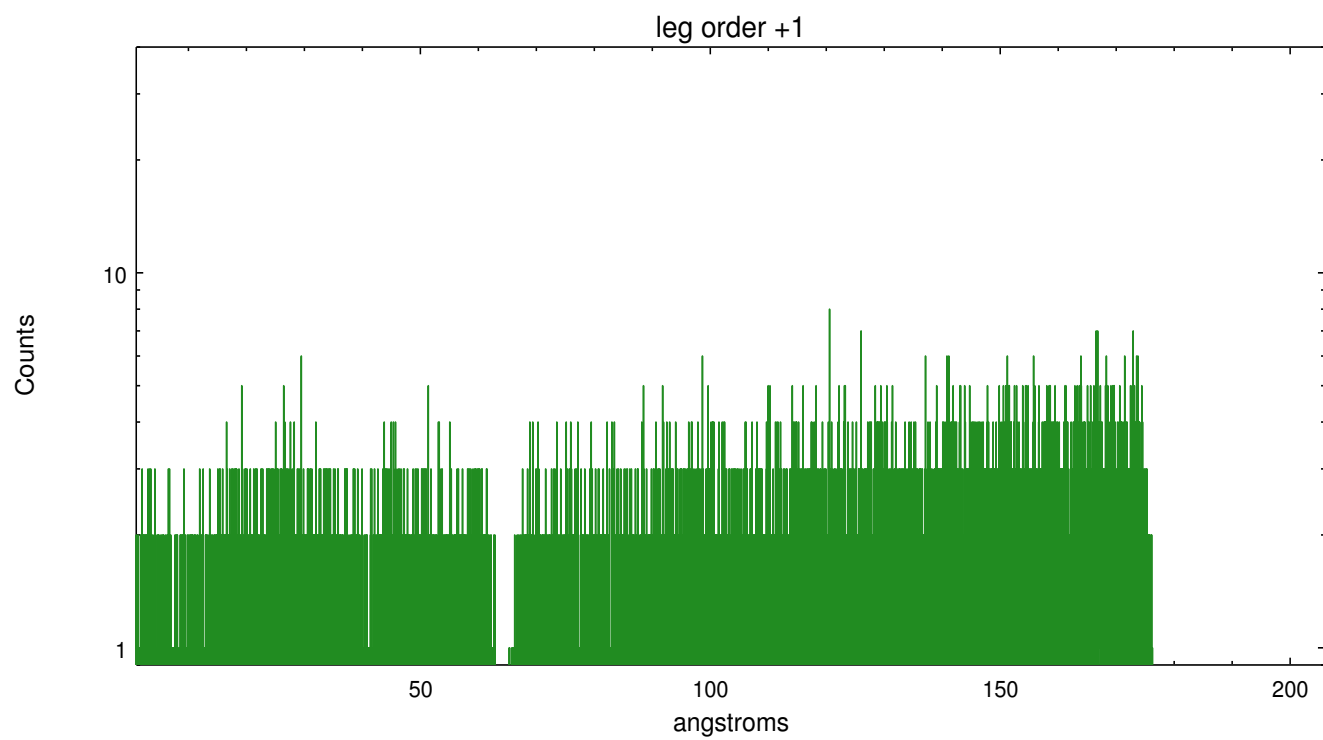
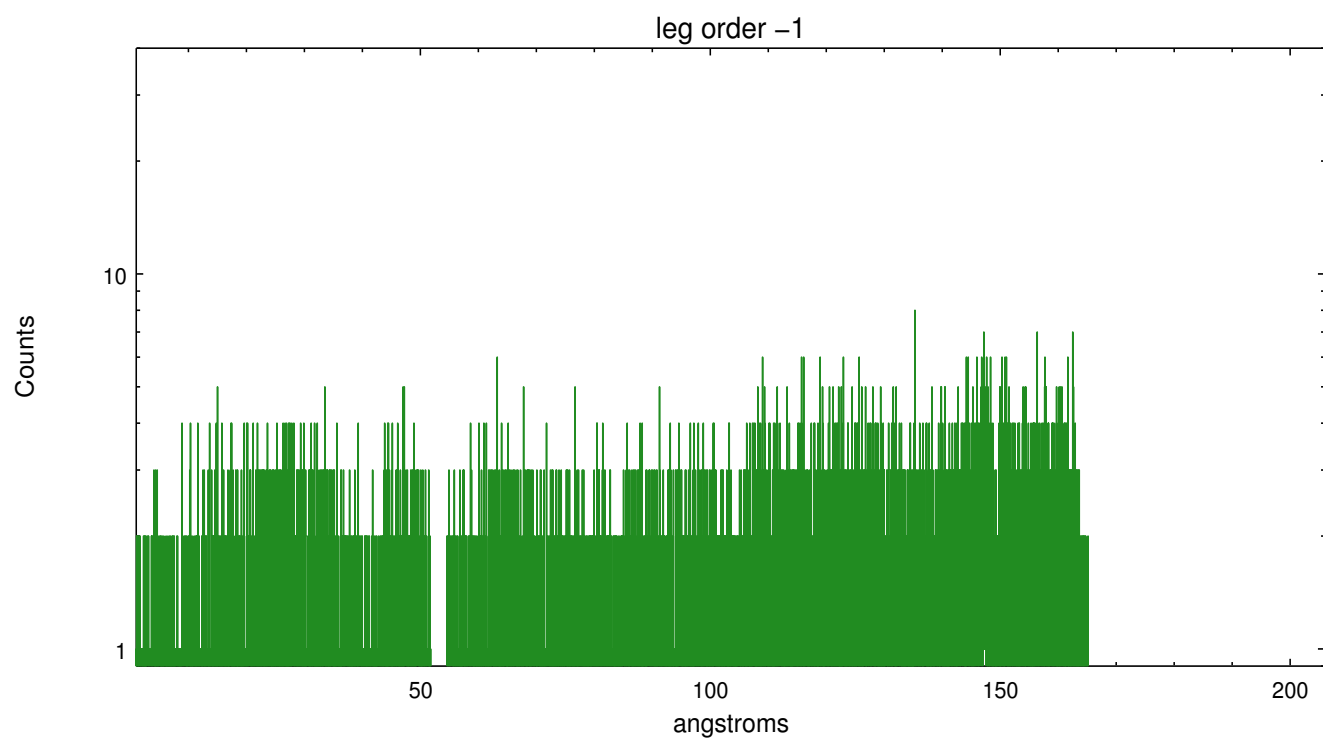


3 Gratings

3.1 LETG Arm



LETG Zero Order



A Summary

A.1 Status

V&V Scientist	Joy Nichols
V&V Date (YYYY-MM-DD)	2012.08.14
V&V Edition	1
V&V Disposition and Status	OK
V&V Charge Time	10.6507754

A.2 Comments

About 10.7 ksec into the observation, there is a data glitch. After that time, very few events are recorded by the instrument, although the DTF is about 1.0 during this short interval at the end of the observation. It appears that this time interval has been included in the GTI. Users may need to time-filter the data to remove any period that has few/no events.