

V&V Reference Report

L2 ASCDS Version : 8.4.3.1

Observation 7161 - L2 Version 2
Chandra X-Ray Center

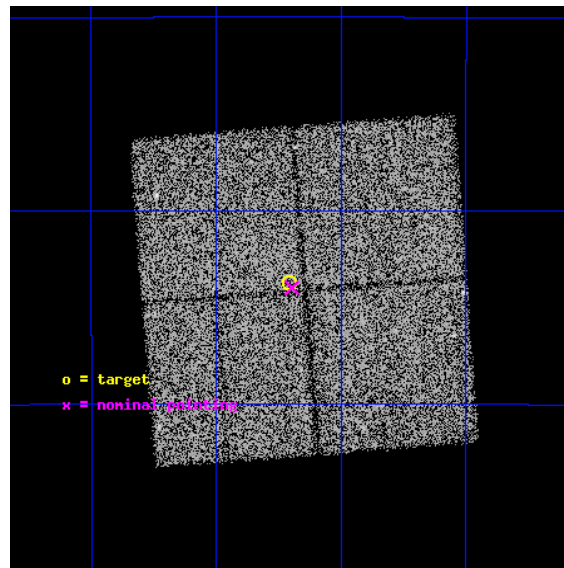
L2 Processing Date : Apr 12 2012

Contents

1	Front	2
2	OBI	3
2.1	OBI	3
2.1.1	Images	3
2.1.2	Bias	3
2.1.3	Parameters	4
2.1.4	Events	4
2.2	Compared Parameters	5
2.3	Aspect	6
2.4	Star Slots	9
2.4.1	Slot 3	9
2.4.2	Slot 4	10
2.4.3	Slot 5	11
2.4.4	Slot 6	12
2.4.5	Slot 7	13
2.5	FID Slots	14
2.5.1	Slot 0	14
2.5.2	Slot 1	15
2.5.3	Slot 2	16
A	Summary	17
A.1	Status	17
A.2	Comments	17

1 Front

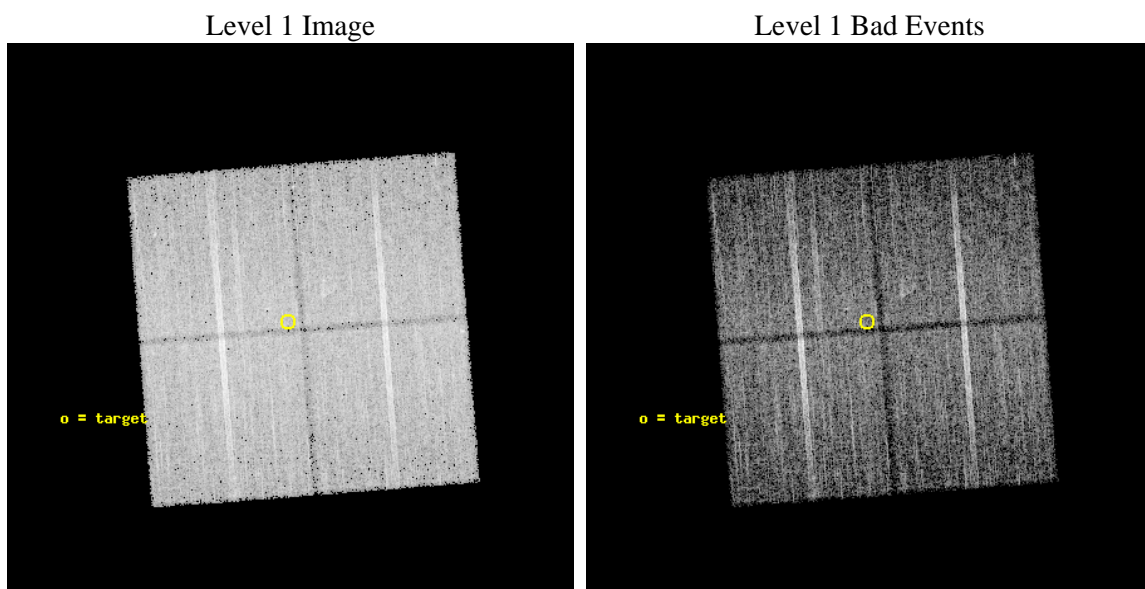
seq_num	600599	Sequence number
obs_id	7161	Observation id
title	Galactic Bulge Latitude Survey	Proposal title
observer	Professor Johnathan Grindlay	Principal investigator
object	GBW5	Source name
dtcycle	0	
cycle	P	events from which exps? Prim/Second/Both
ra_targ	267.676667	Observer's specified target RA [deg]
dec_targ	-29.395556	Observer's specified target Dec [deg]
ra_nom	267.67422137403	Nominal RA [deg]
dec_nom	-29.399680181772	Nominal Dec [deg]
roll_nom	265.600486618	Nominal Roll [deg]
revision	2	Processing version of data
ontime	13984.059117377	Sum of GTIs [s]
livetime	13801.347090094	Livetime [s]
ontime0	13977.777216554	Sum of GTIs [s]
ontime1	13984.059266746	Sum of GTIs [s]
ontime2	13984.059117317	Sum of GTIs [s]
ontime3	13984.059117377	Sum of GTIs [s]
l2events	67797	Number of level 2 events



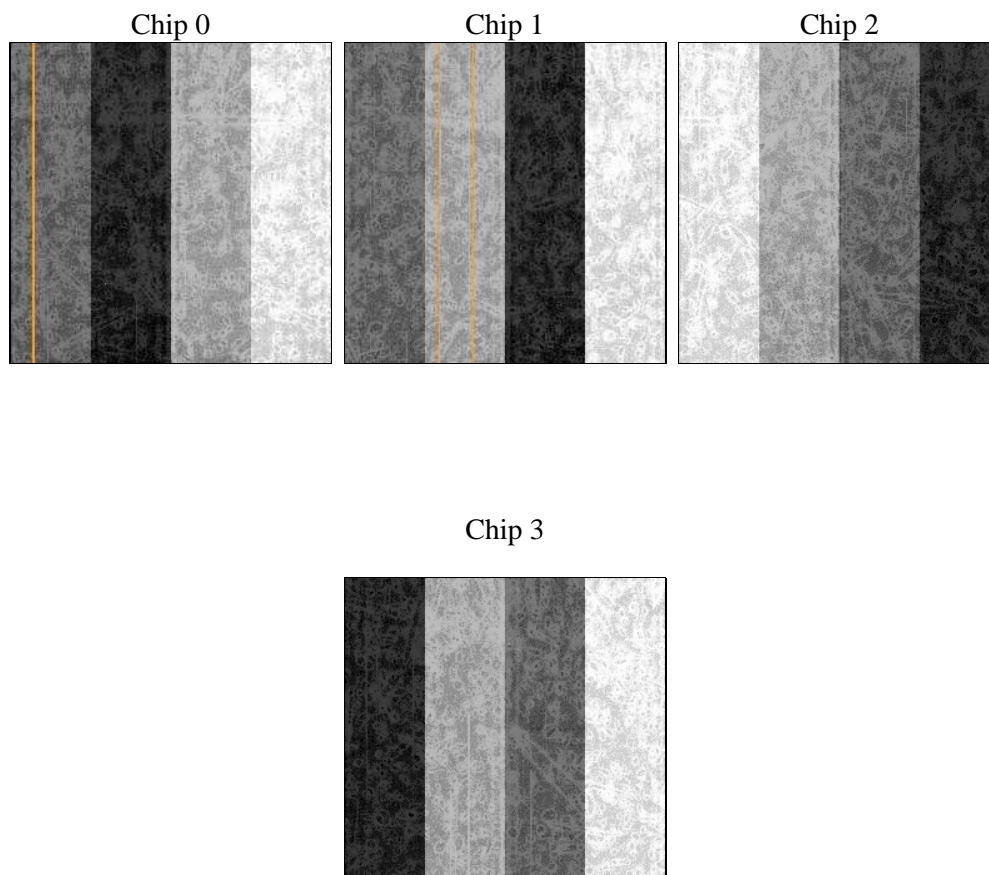
2 OBI

2.1 OBI

2.1.1 Images



2.1.2 Bias



2.1.3 Parameters

obi_num	0	Obi number	sched_exp_time	14200.000000	[s] Scheduled observation exposure time
ascdsver	8.4.3.1	Processing system revision	ontime	13984.059117377	Sum of GTIs [s]
caldsver	4.4.9	 	ontime0	13977.777216554	Sum of GTIs [s]
date	2012-04-12T09:08:51	Date and time of file creation	ontime1	13984.059266746	Sum of GTIs [s]
revision	2	Processing version of data	ontime2	13984.059117317	Sum of GTIs [s]
			ontime3	13984.059117377	Sum of GTIs [s]
			l1events	507517	Number of level 1 events

2.1.4 Events

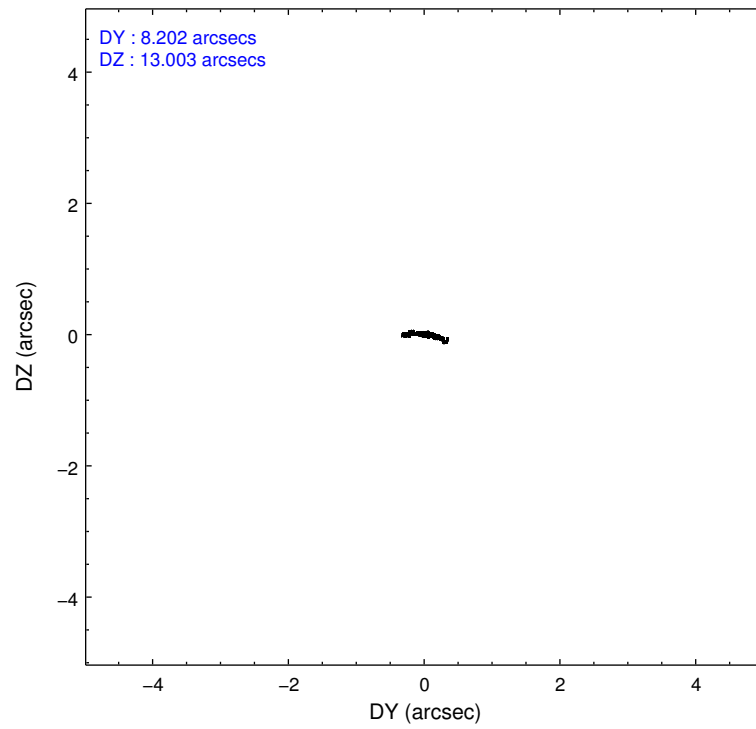
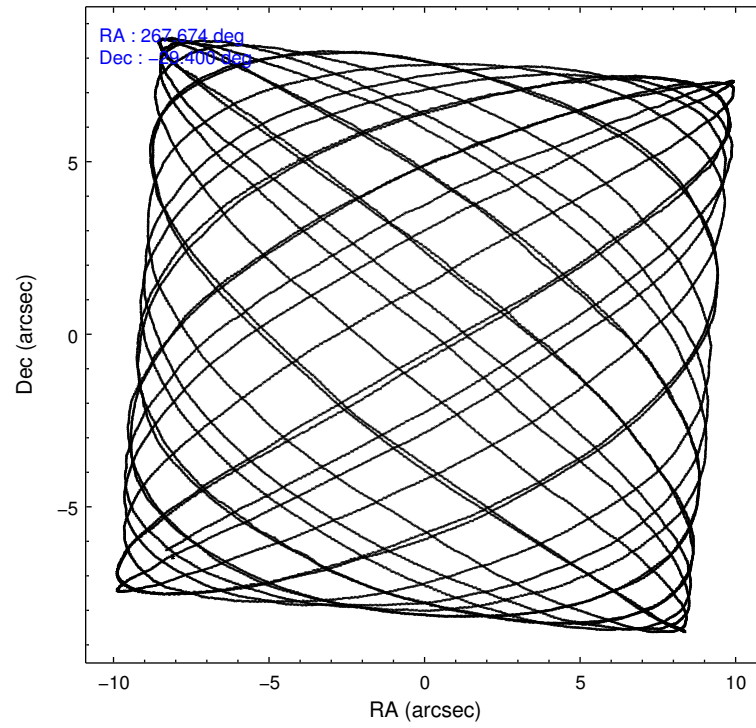
	ccd 0	ccd 1	ccd 2	ccd 3
level 1 events	125318	120815	133036	128348
rejected events	105391	100855	113210	110201
rejected %	84%	83%	85%	85%

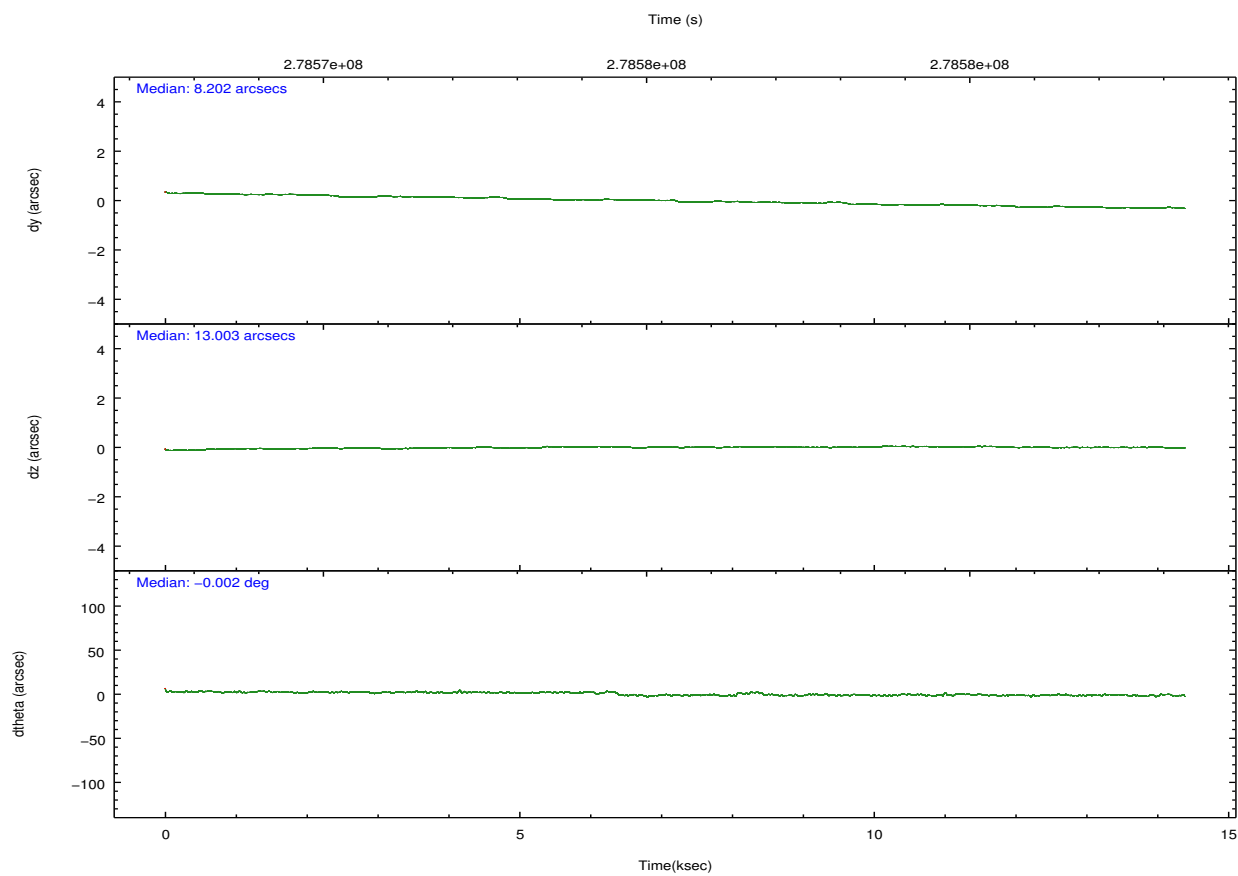
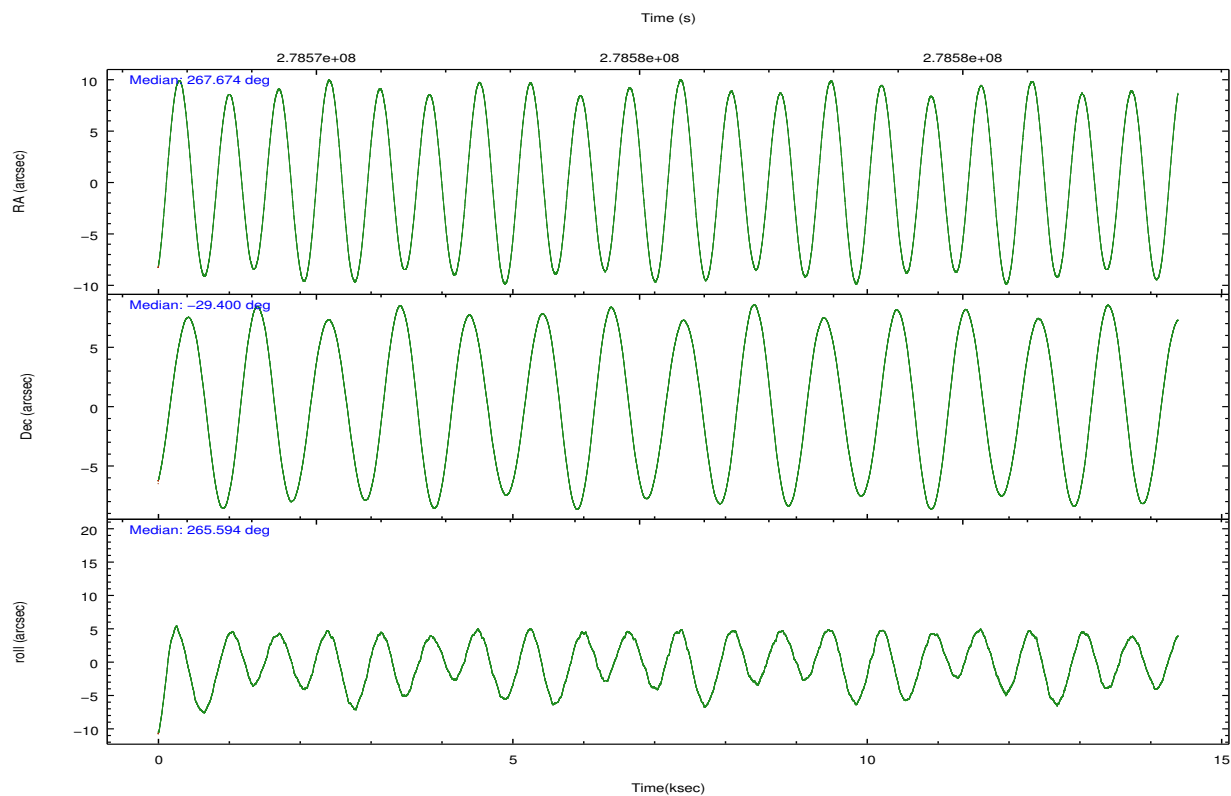
	ccd 0	ccd 1	ccd 2	ccd 3
grade 0 events	10264	9299	10681	9160
	8%	7%	8%	7%
grade 1 events	96	73	97	87
	0%	0%	0%	0%
grade 2 events	3850	4098	3599	3316
	3%	3%	2%	2%
grade 3 events	1589	1617	1601	1524
	1%	1%	1%	1%
grade 4 events	1571	1657	1517	1444
	1%	1%	1%	1%
grade 5 events	4997	5507	4884	5799
	3%	4%	3%	4%
grade 6 events	2663	3305	2446	2713
	2%	2%	1%	2%
grade 7 events	100288	95259	108211	104305
	80%	78%	81%	81%

2.2 Compared Parameters

Parameter	Planned	Actual	Parameter	Planned	Actual
Instrument	ACIS	ACIS	Obspar format version number	7	7
Detector	ACIS-0123	ACIS-0123	Obspar file type	PREDICTED	ACTUAL
Grating	NONE	NONE	Obspar update status	NONE	UPDATED
Data mode	VFAINT	VFAINT	Number of optional ACIS chips dropped	0	0
Observation mode	POINTING	POINTING	On-chip summing requested	N	N
[deg] Pointing RA	267.660526	267.6742213740325	Subarray requested	NONE	NONE
[deg] Pointing Dec	-29.375022	-29.39968018177163	Alternating exposures requested	N	N
[deg] Pointing Roll	265.385084	265.6004866180018	[s] Primary exposure time	0.000000	3.1
[mm] SIM focus pos	-0.782348	-0.7809083437167272			
[mm] SIM defocus	0	0.001439871863259334			
[mm] SIM translation stage pos	-233.592463	-233.5874344608287			
[mm] SIM translation stage offset	0	-0.005018542100998502			
[s] Observation start time (MET)	278568440.184000	278568063.96097			
Observation start date	2006-10-30T04:06:15	2006-10-30T04:01:03			
[s] Observation end time (MET)	278582640.184000	278582773.73667			
Observation end date	2006-10-30T08:02:55	2006-10-30T08:06:13			
Read mode	TIMED	TIMED			

2.3 Aspect



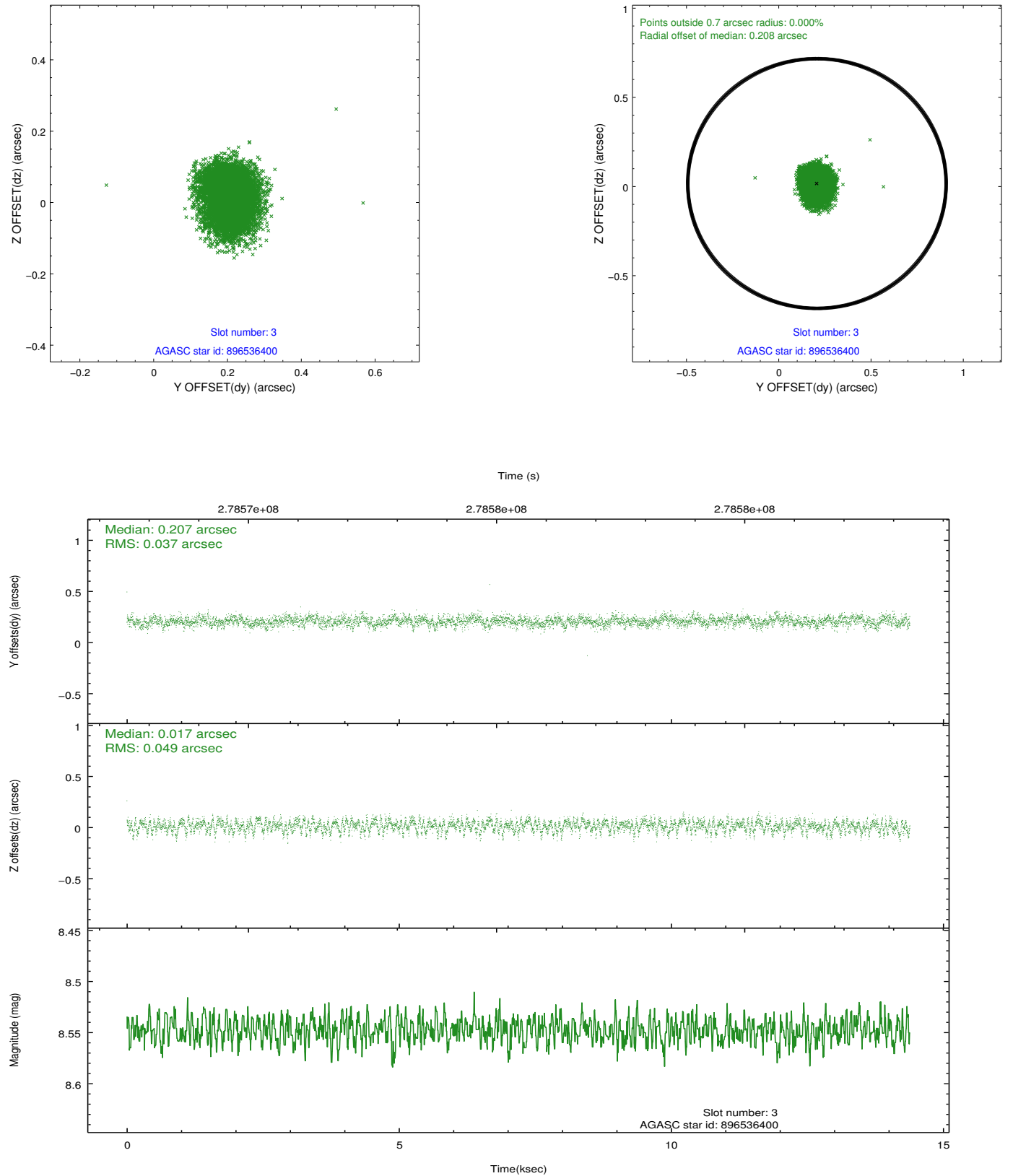


Slot Statistics

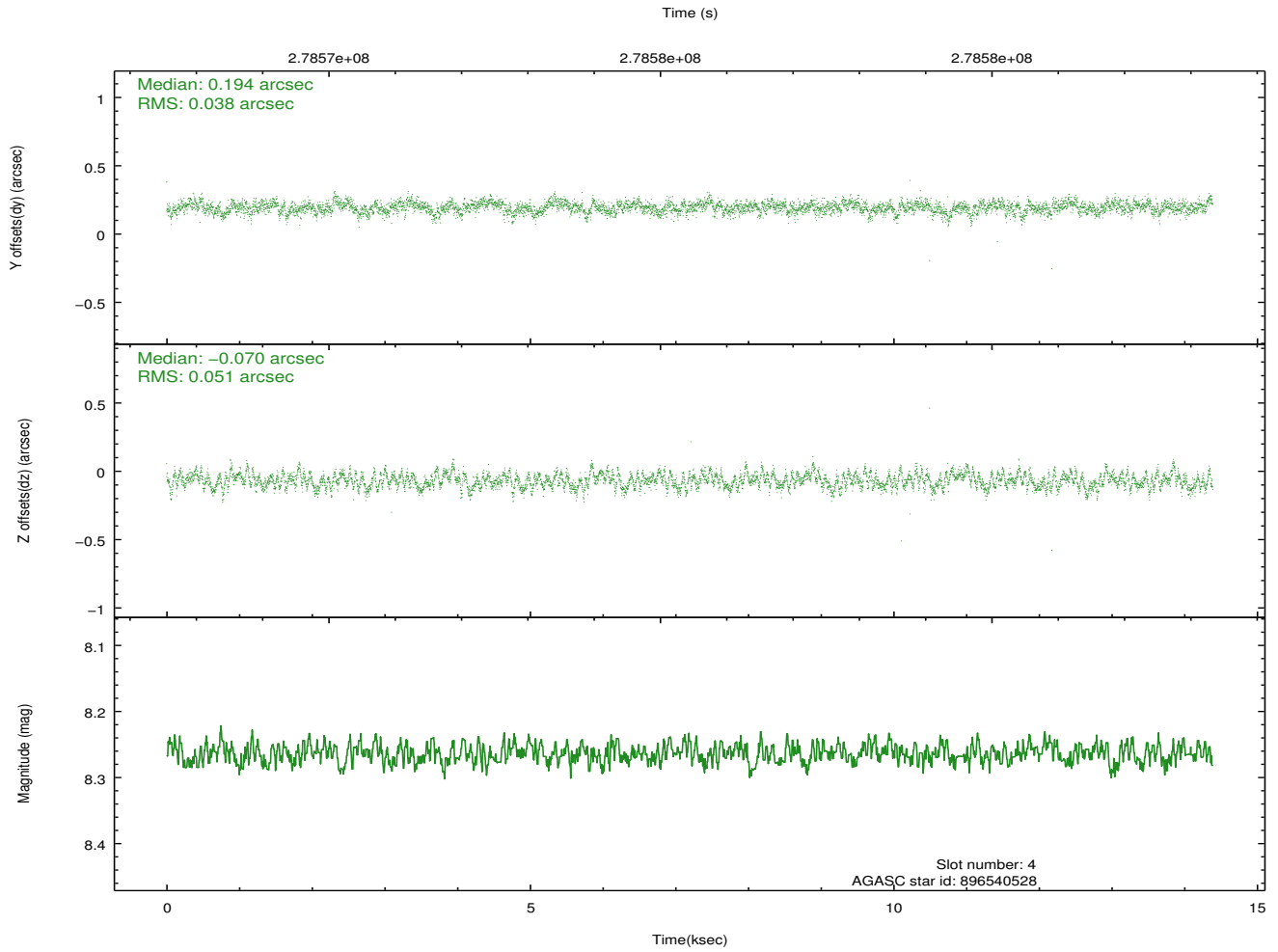
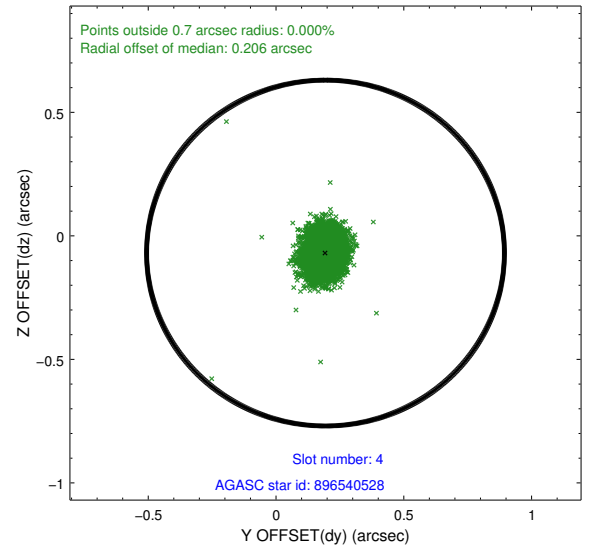
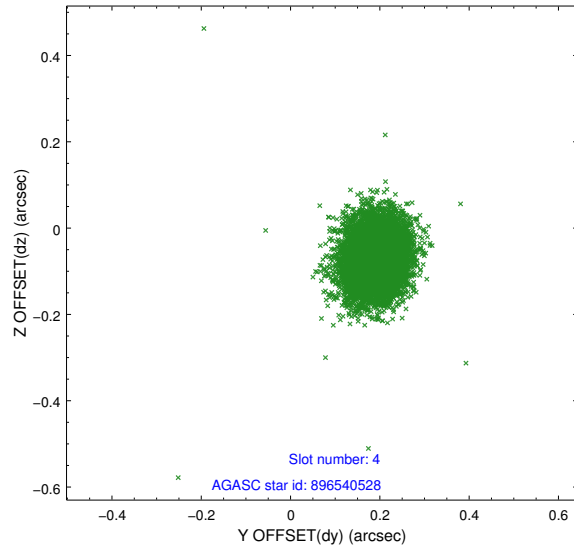
slot	status	id	mag	n_pts	med_dy	med_dz	dr1	dr2	ra	dec	mean_y	mean_z
0	FID	ACIS-I-1	7.24	3508	-0.027	-0.021	0.023	0.031	0.000000	0.000000	931.43	-836.56
1	FID	ACIS-I-4	7.18	3509	0.170	0.053	0.021	0.028	0.000000	0.000000	2151.85	1063.14
2	FID	ACIS-I-5	7.23	3510	-0.239	0.040	0.019	0.028	0.000000	0.000000	-1816.36	1061.37
3	GUIDE	896536400	8.55	7019	0.207	0.017	0.066	0.106	267.359146	-29.438655	306.22	-923.09
4	GUIDE	896540528	8.26	7013	0.194	-0.070	0.066	0.109	267.368305	-29.314773	-140.50	-931.43
5	GUIDE	896541576	8.17	7018	-0.285	-0.001	0.063	0.099	267.051055	-28.762912	-2036.53	-2094.37
6	GUIDE	898247688	8.67	7014	-0.116	0.042	0.086	0.141	268.426687	-29.012154	-1488.71	2299.53
7	GUIDE	898248800	8.20	7016	-0.007	0.013	0.060	0.094	267.977609	-29.931731	1919.39	1148.16

2.4 Star Slots

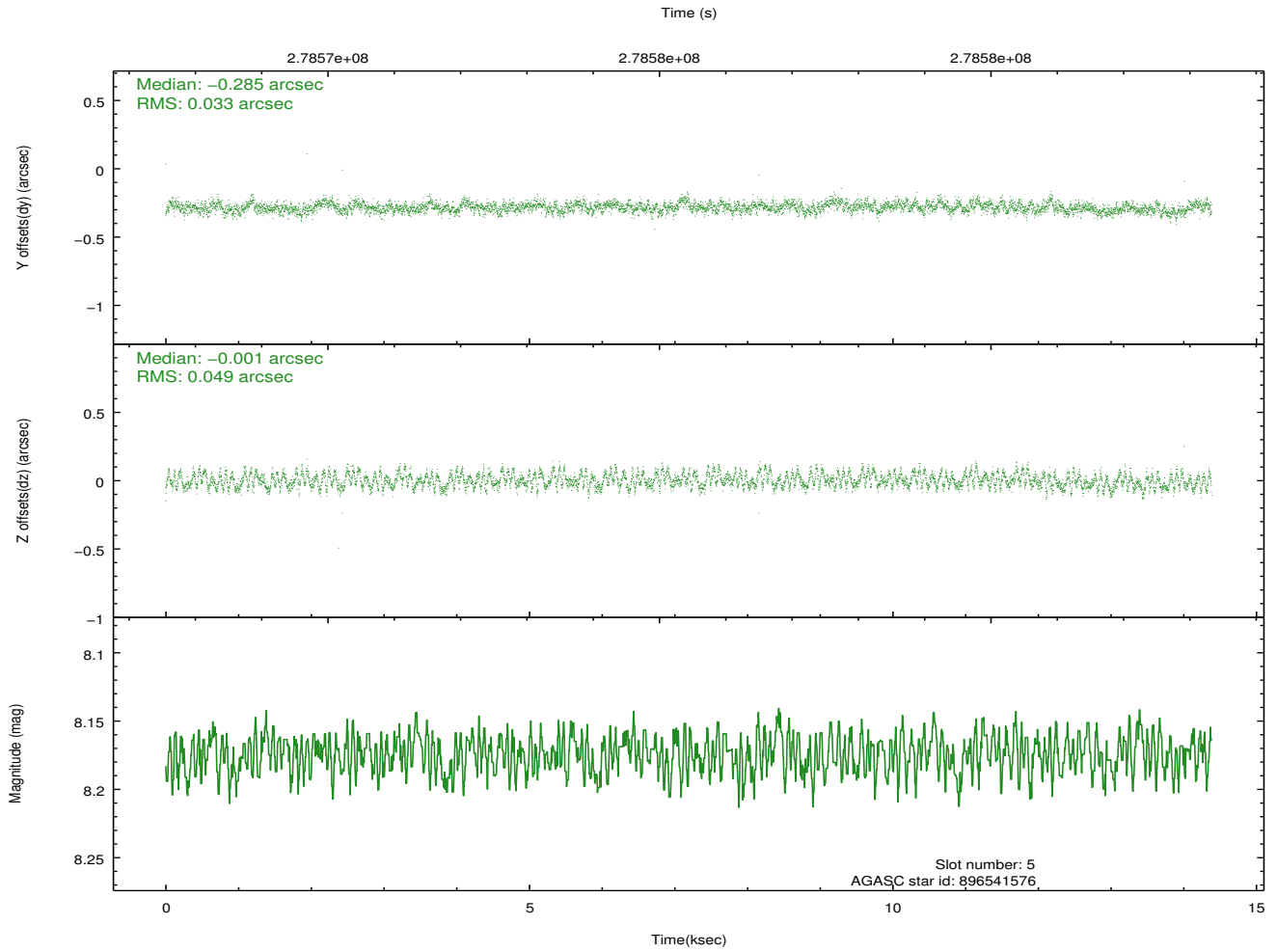
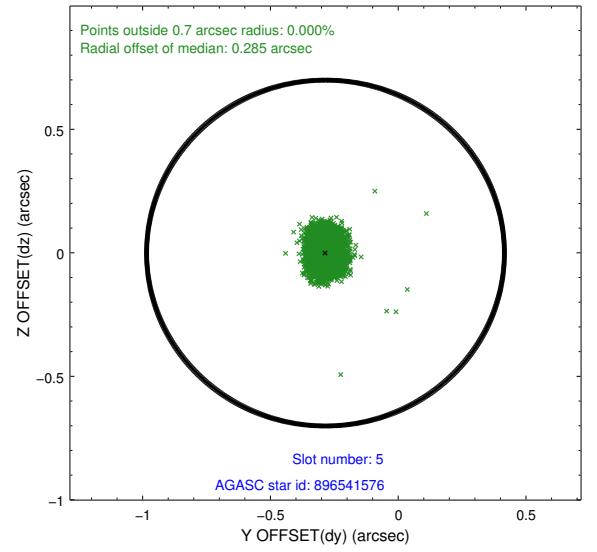
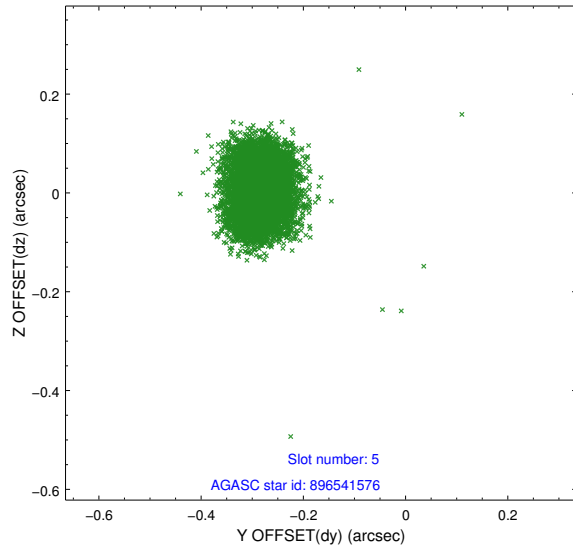
2.4.1 Slot 3



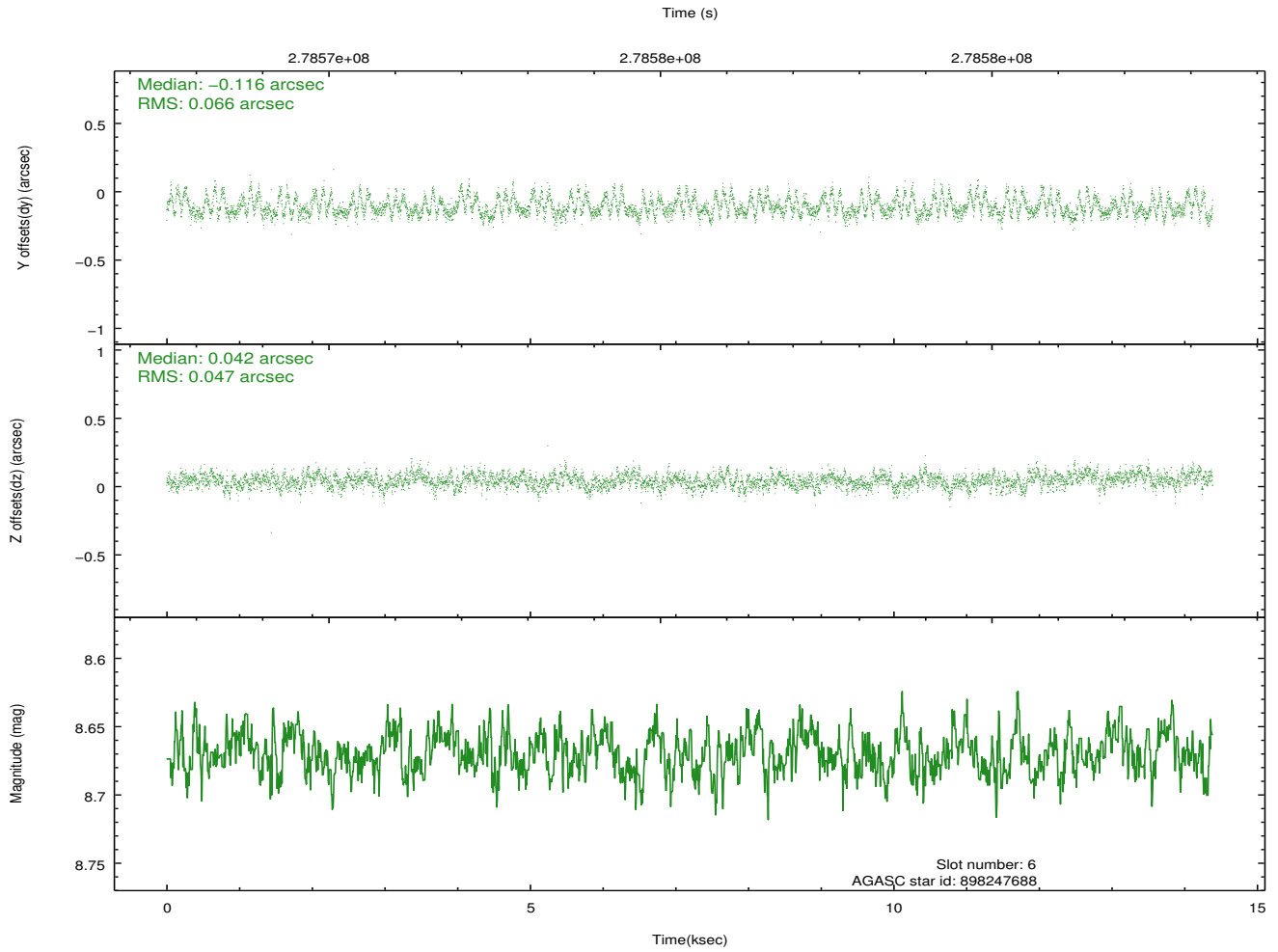
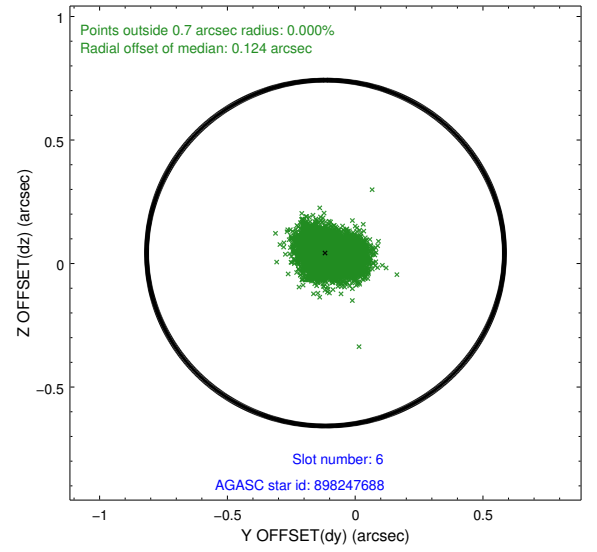
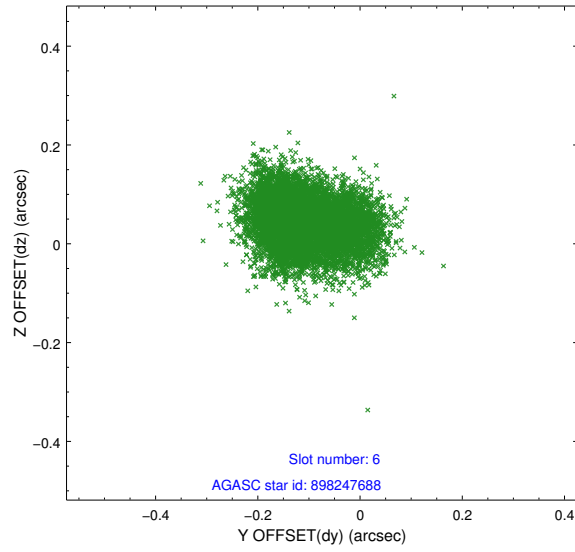
2.4.2 Slot 4



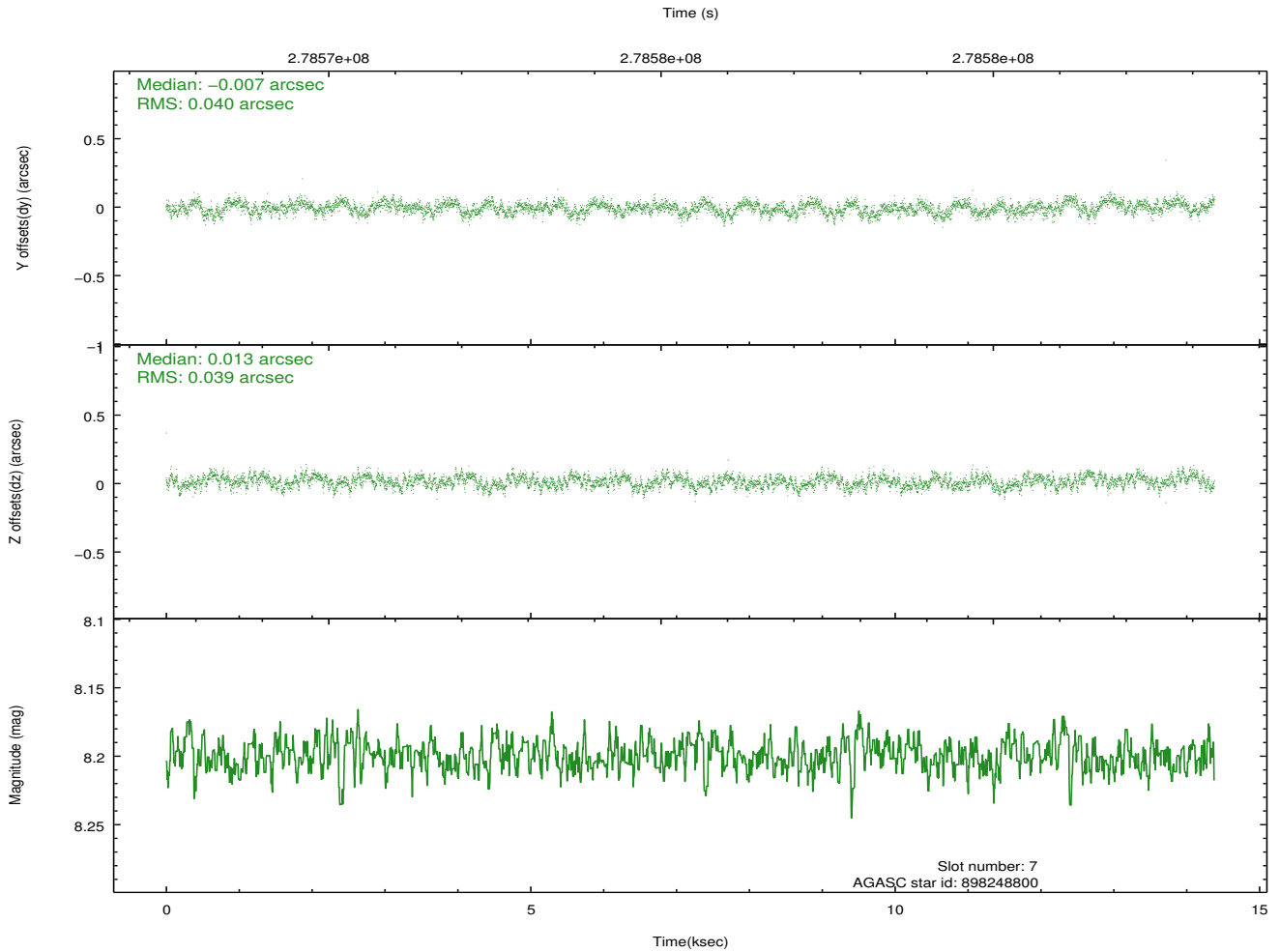
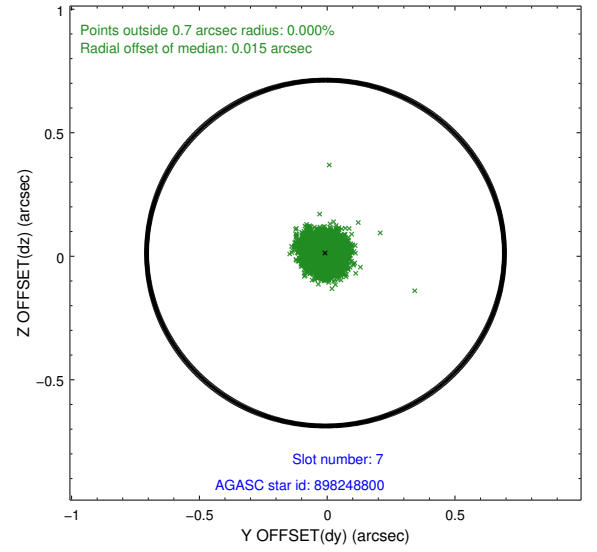
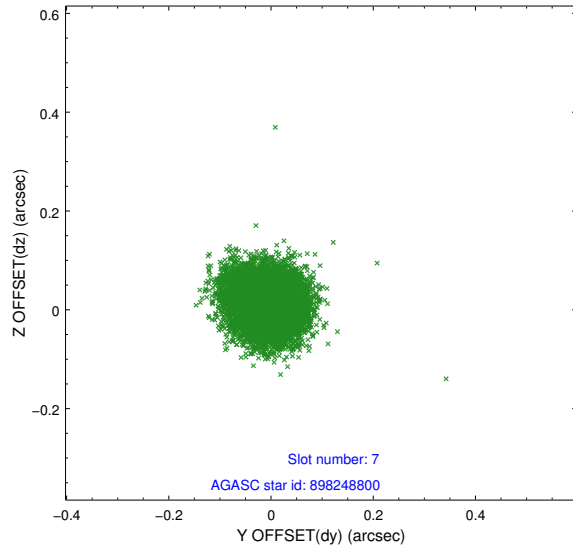
2.4.3 Slot 5



2.4.4 Slot 6

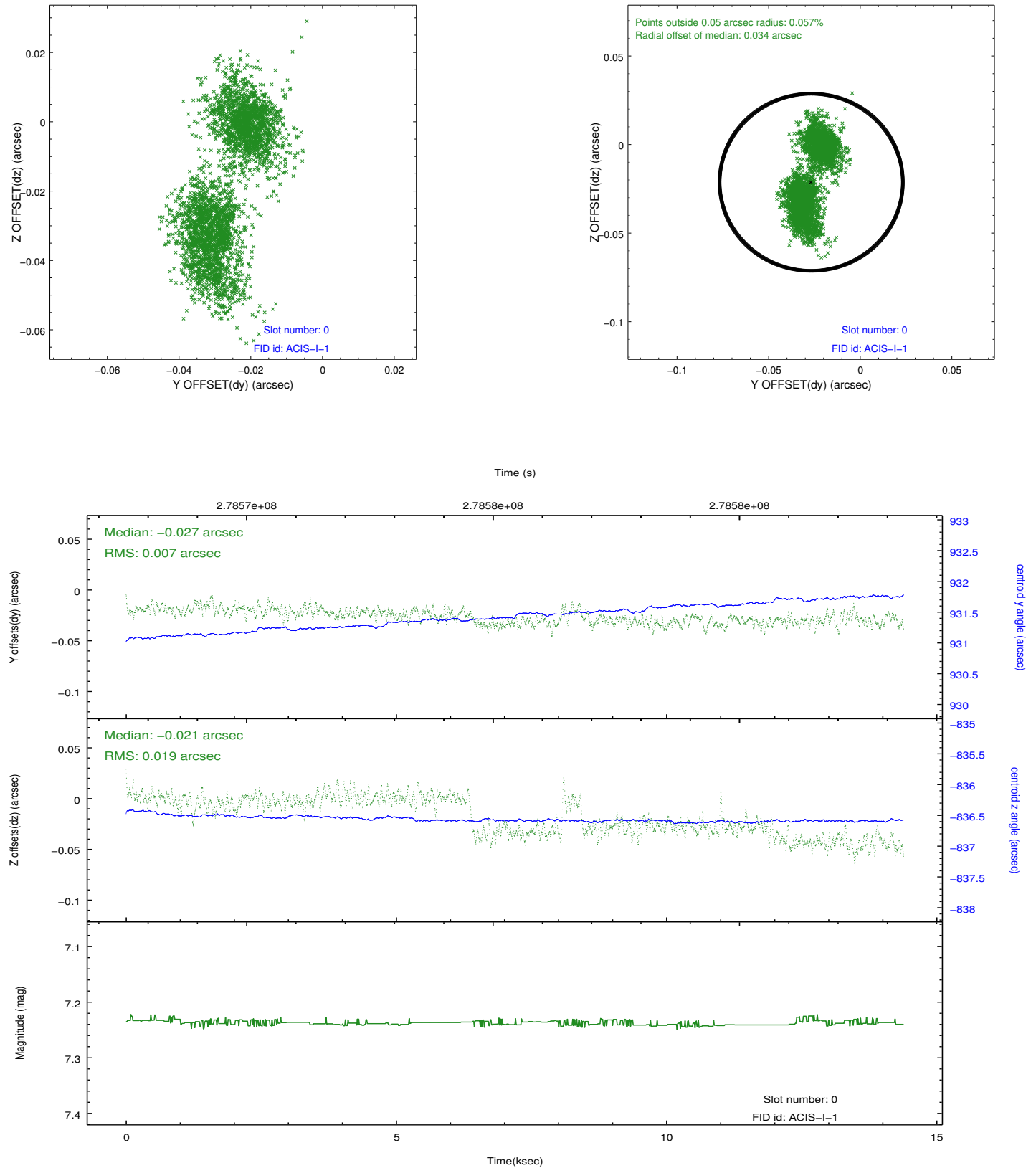


2.4.5 Slot 7

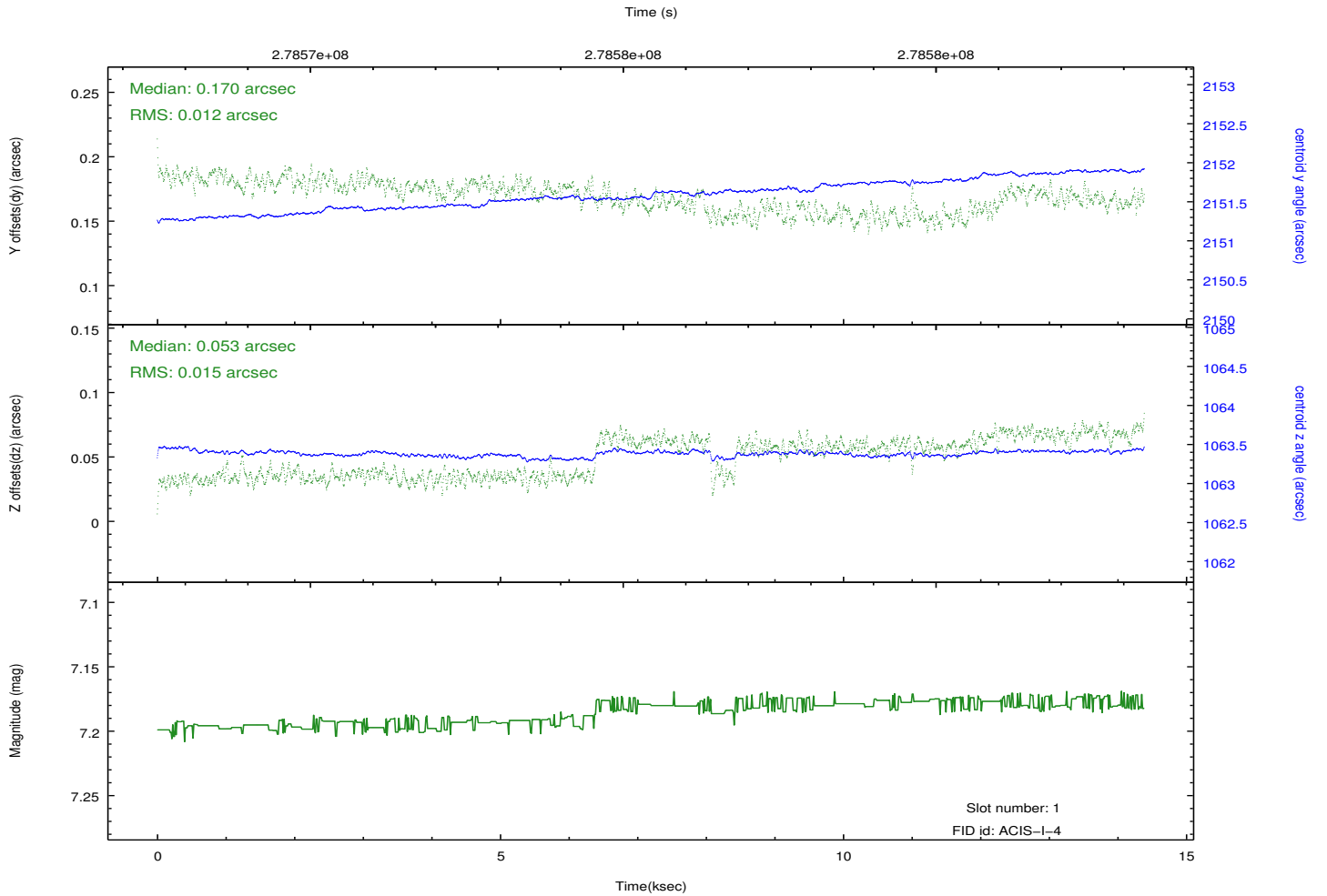
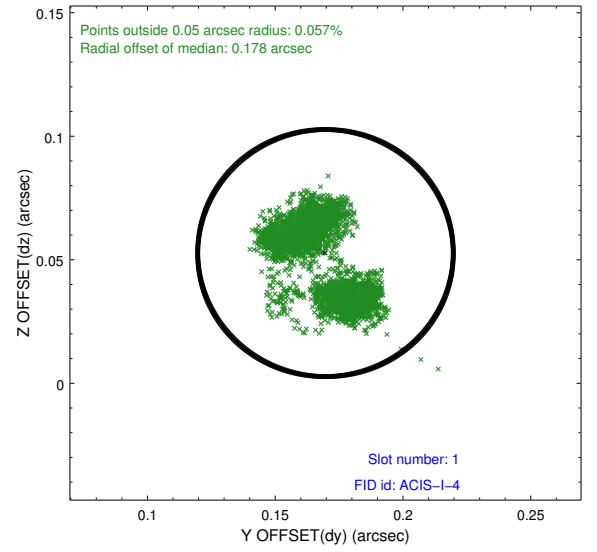
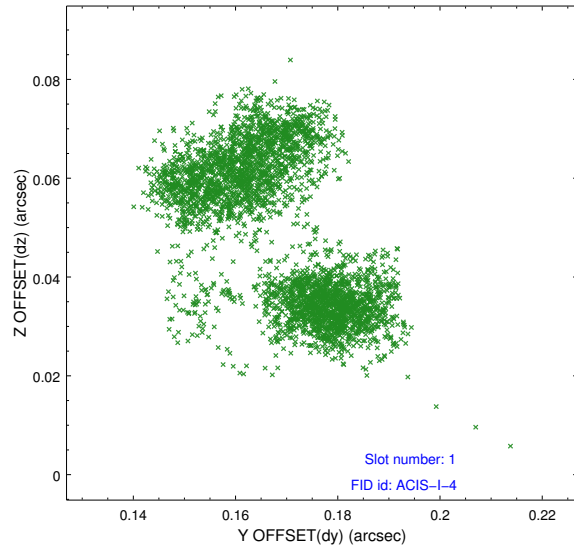


2.5 FID Slots

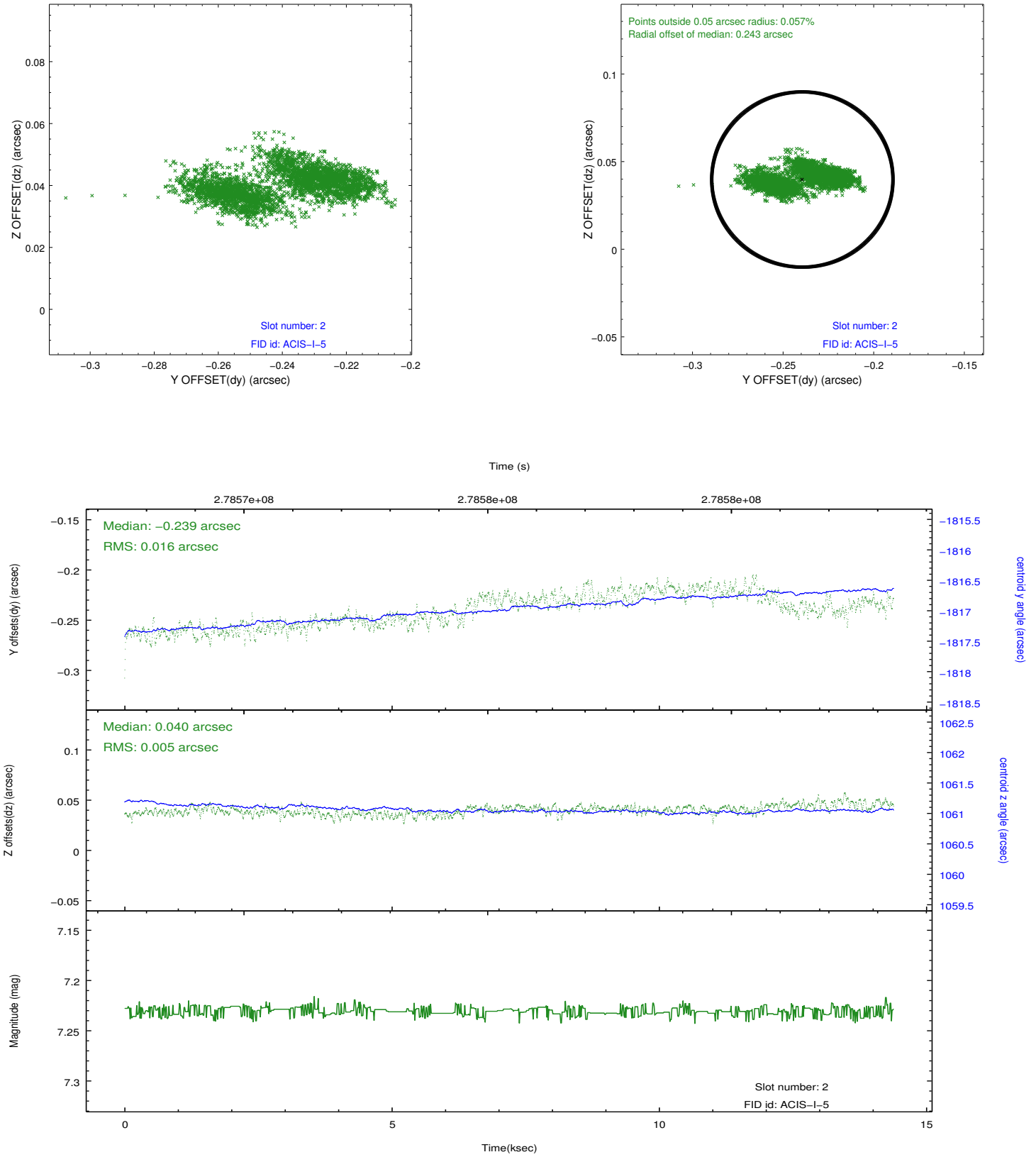
2.5.1 Slot 0



2.5.2 Slot 1



2.5.3 Slot 2



A Summary

A.1 Status

V&V Scientist	Beth Sundheim
V&V Date (YYYY-MM-DD)	2012.04.12
V&V Edition	1
V&V Disposition and Status	OK
V&V Charge Time	13.9840591

A.2 Comments

Joint proposal with NOAO.