

V&V Reference Report

L2 ASCDS Version : 7.6.7.1

Observation 6931 - L2 Version 002
Chandra X-Ray Center

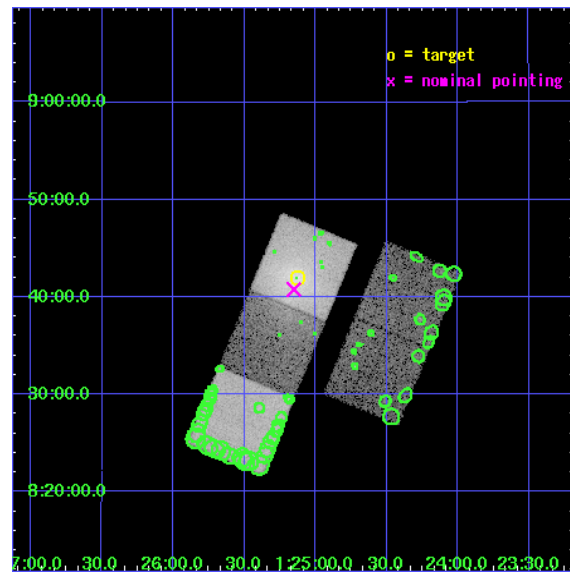
L2 Processing Date : Apr 4 2006

Contents

1	Front	2
2	OBI	3
2.1	OBI	3
2.1.1	Images	3
2.1.2	Bias	3
2.1.3	Parameters	4
2.1.4	Events	4
2.2	Compared Parameters	5
2.3	Aspect	6
2.4	Star Slots	9
2.4.1	Slot 3	9
2.4.2	Slot 4	10
2.4.3	Slot 5	11
2.4.4	Slot 6	12
2.4.5	Slot 7	13
2.5	FID Slots	14
2.5.1	Slot 0	14
2.5.2	Slot 1	15
2.5.3	Slot 2	16
3	Point Sources	17
A	Summary	18
A.1	Status	18
A.2	Comments	18

1 Front

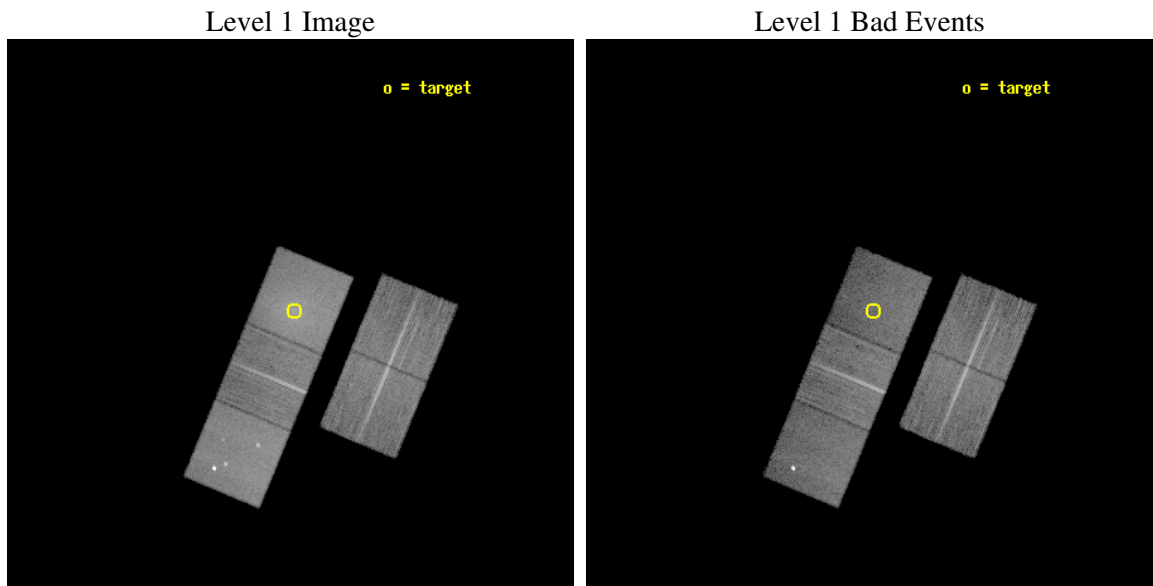
seq_num	800564
obs_id	6931
title	Probing the triple nucleus in the brightest galaxy of the cluster Abell 193
observer	Dr Caleb Scharf
object	Abell 193
dtcycle	0
cycle	P
ra_targ	21.281667
dec_targ	8.699444
ra_nom	21.288072290836
dec_nom	8.6797153300962
roll_nom	292.47464662761
revision	2
ontime	18181.458984643
livetime	17943.904838013
ontime2	18184.599965036
ontime3	18181.458974779
ontime5	18181.458974808
ontime6	18184.599965036
ontime7	18181.458984643
l2events	206278



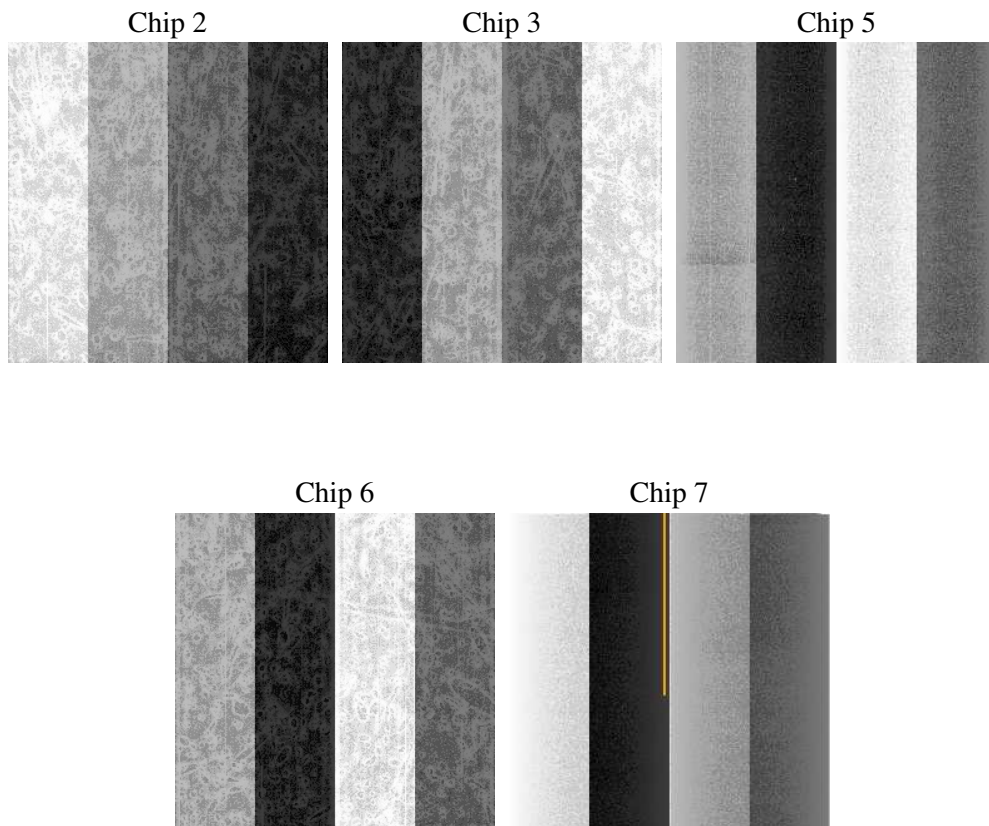
2 OBI

2.1 OBI

2.1.1 Images



2.1.2 Bias



2.1.3 Parameters

obi_num	0
ascdsver	7.6.7.1
caldsver	3.2.1
date	2006-04-04T20:01:18
revision	2

sched_exp_time	18000.000000
ontime	18682.73582226
ontime2	18685.876782745
ontime3	18682.735792488
ontime5	18682.735812426
ontime6	18685.876782745
ontime7	18682.73582226
l1events	740268

2.1.4 Events

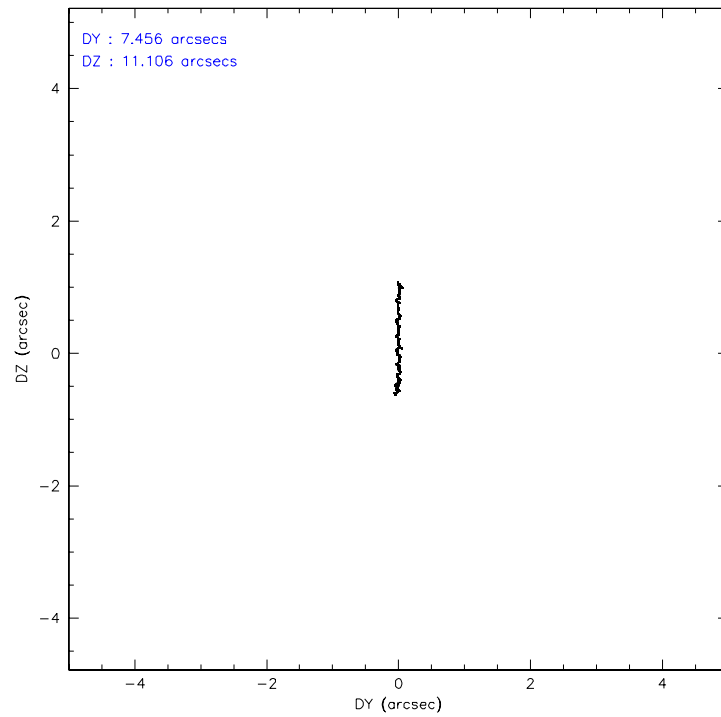
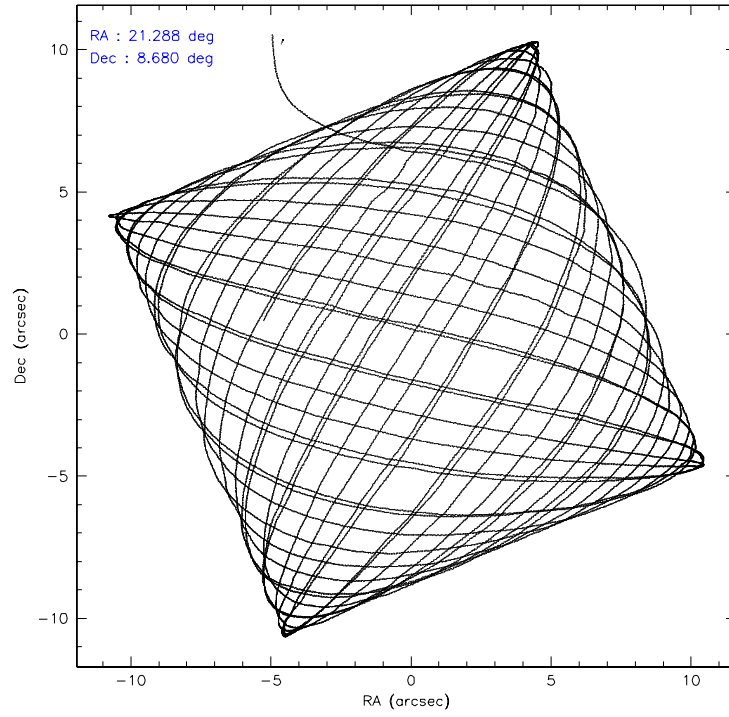
	ccd 2	ccd 3	ccd 5	ccd 6	ccd 7
level 1 events	128831	123643	175538	131234	181022
rejected events	116414	111797	96251	112949	83756
rejected %	90%	90%	54%	86%	46%

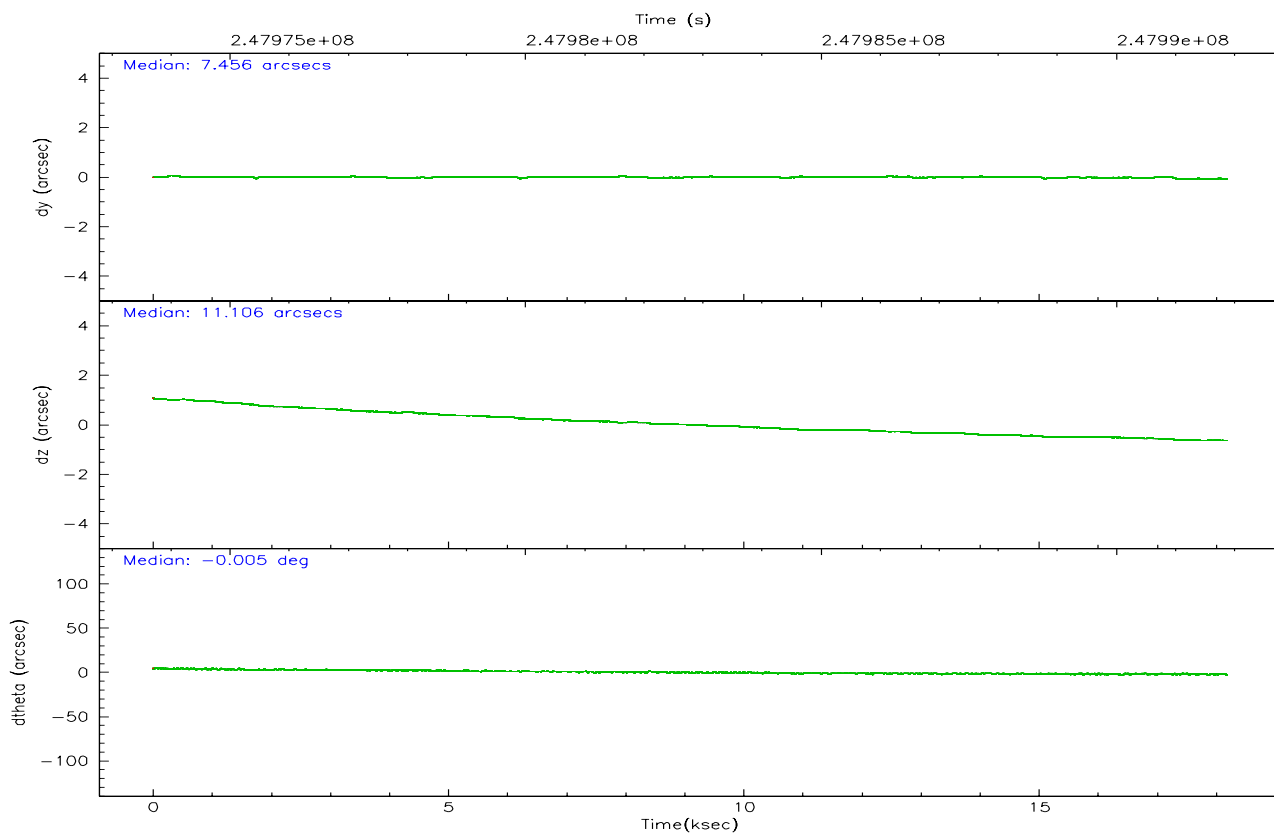
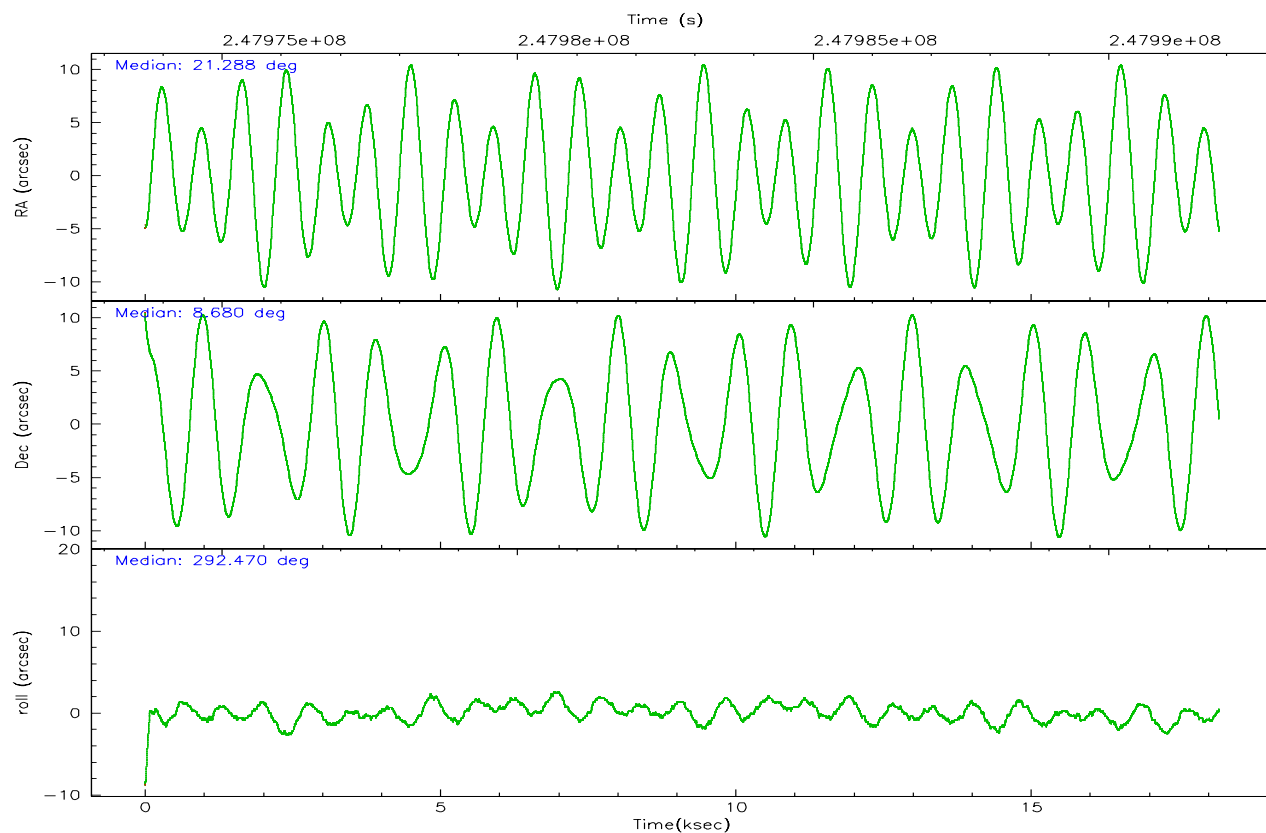
	ccd 2	ccd 3	ccd 5	ccd 6	ccd 7
grade 0 events	5052	4641	5459	9251	14547
	3%	3%	3%	7%	8%
grade 1 events	71	67	351	81	96
	0%	0%	0%	0%	0%
grade 2 events	2866	2499	26026	3326	26300
	2%	2%	14%	2%	14%
grade 3 events	1324	1317	2032	1549	7800
	1%	1%	1%	1%	4%
grade 4 events	1329	1358	1898	1598	7569
	1%	1%	1%	1%	4%
grade 5 events	3804	4845	10854	5191	10863
	2%	3%	6%	3%	6%
grade 6 events	2172	2367	46005	2973	42867
	1%	1%	26%	2%	23%
grade 7 events	112213	106549	82913	107265	70980
	87%	86%	47%	81%	39%

2.2 Compared Parameters

Parameter	Planned	Actual	Parameter	Planned	Actual
Instrument	ACIS	ACIS	Obspar format version number	6	6
Detector	ACIS-23567	ACIS-23567	Obspar file type	PREDICTED	ACTUAL
Grating	NONE	NONE	Obspar update status	NONE	UPDATED
Data mode	VFAINT	VFAINT	On-chip summing requested	N	N
Observation mode	POINTING	POINTING	Subarray requested	NONE	NONE
Pointing RA	21.265985	21.28807229083592	Alternating exposures requested	N	N
Pointing Dec	8.695960	8.679715330096151	Primary exposure time	0.000000	3.1
Pointing Roll	292.321357	292.474646627612			
SIM focus pos (mm)	-0.684267	-0.6828225247311905			
SIM defocus (mm)	0	0.001444936568705701			
SIM translation stage pos (mm)	-190.132523	-190.1400660498719			
SIM translation stage offset (mm)	0	0.00754346686406393			
Observation start time	247973880.184000	247972574.62094			
Observation start date	2005-11-10T01:36:56	2005-11-10T01:16:14			
Observation end time	247991880.184000	247992194.65934			
Observation end date	2005-11-10T06:36:56	2005-11-10T06:43:14			
Read mode	TIMED	TIMED			

2.3 Aspect



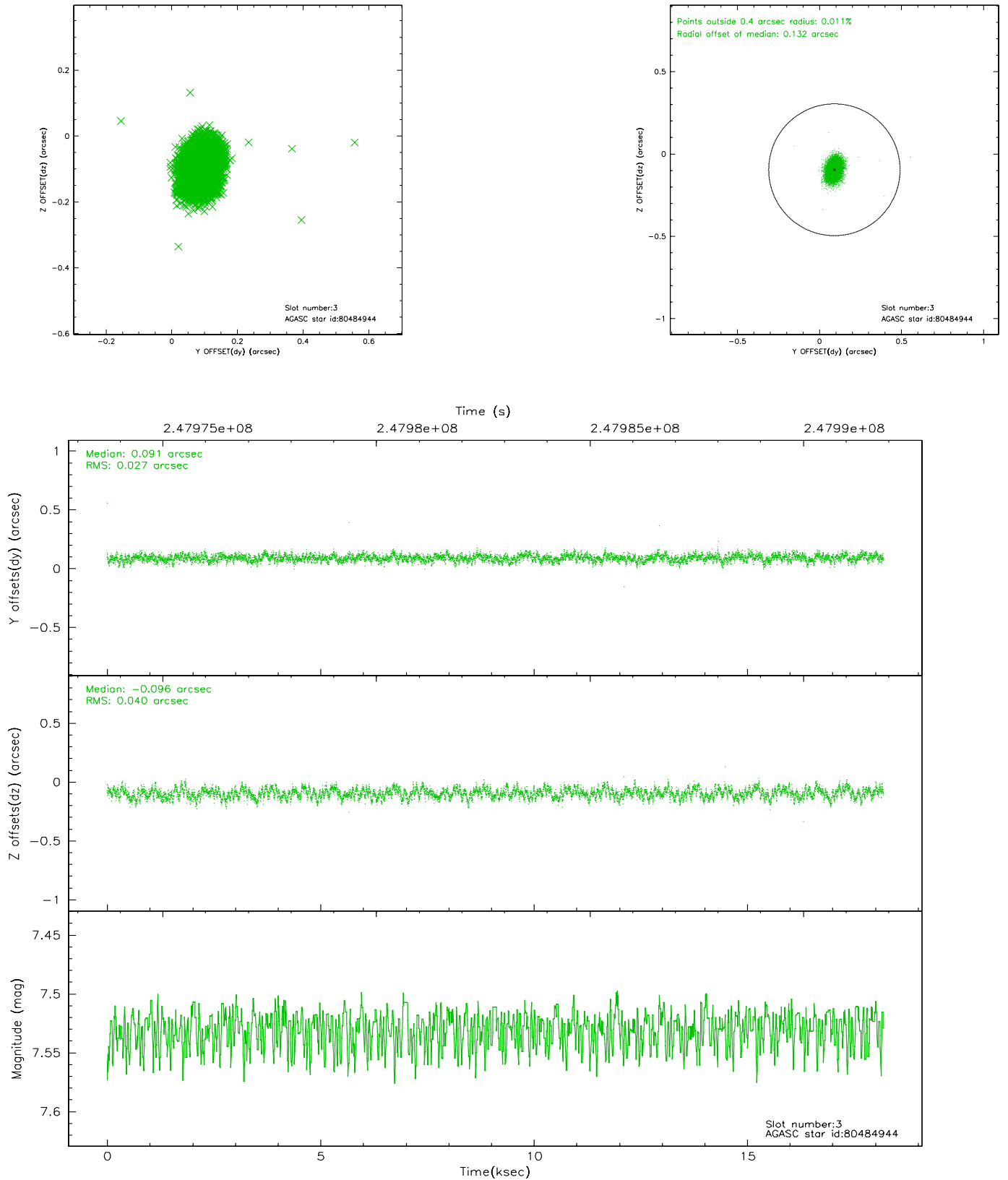


Slot Statistics

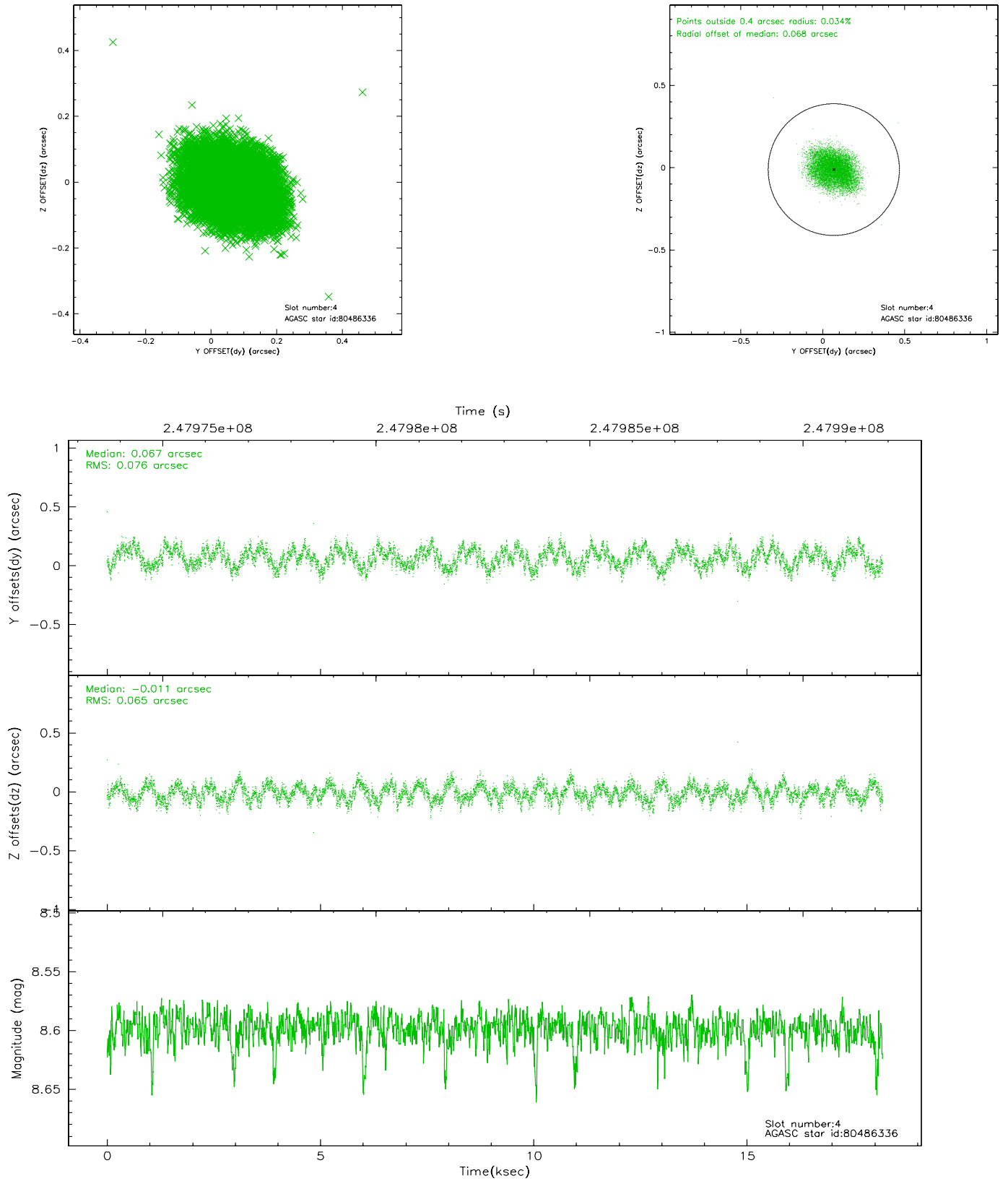
slot	status	id	mag	n_pts	med_dy	med_dz	dr1	dr2	ra	dec	mean_y	mean_z
0	FID	ACIS-S-1	7.19	4435	0.007	-0.050	0.019	0.030	0.000000	0.000000	935.82	-1728.13
1	FID	ACIS-S-4	7.21	4434	0.029	0.033	0.011	0.017	0.000000	0.000000	2153.37	175.88
2	FID	ACIS-S-5	7.23	4435	-0.063	0.027	0.011	0.024	0.000000	0.000000	-1812.84	169.71
3	GUIDE	80484944	7.53	8872	0.091	-0.096	0.051	0.083	20.717806	8.737577	-880.15	-1746.95
4	GUIDE	80486336	8.60	8867	0.067	-0.011	0.108	0.165	20.917445	8.189304	1215.60	-1841.45
5	GUIDE	80487656	8.48	8865	-0.018	-0.000	0.061	0.096	21.685769	8.603598	874.70	1256.34
6	GUIDE	80488328	7.69	8871	-0.093	0.045	0.084	0.132	20.778363	9.187625	-2295.85	-930.17
7	GUIDE	80483632	8.55	8867	-0.040	0.060	0.073	0.115	20.803064	9.191073	-2274.44	-844.73

2.4 Star Slots

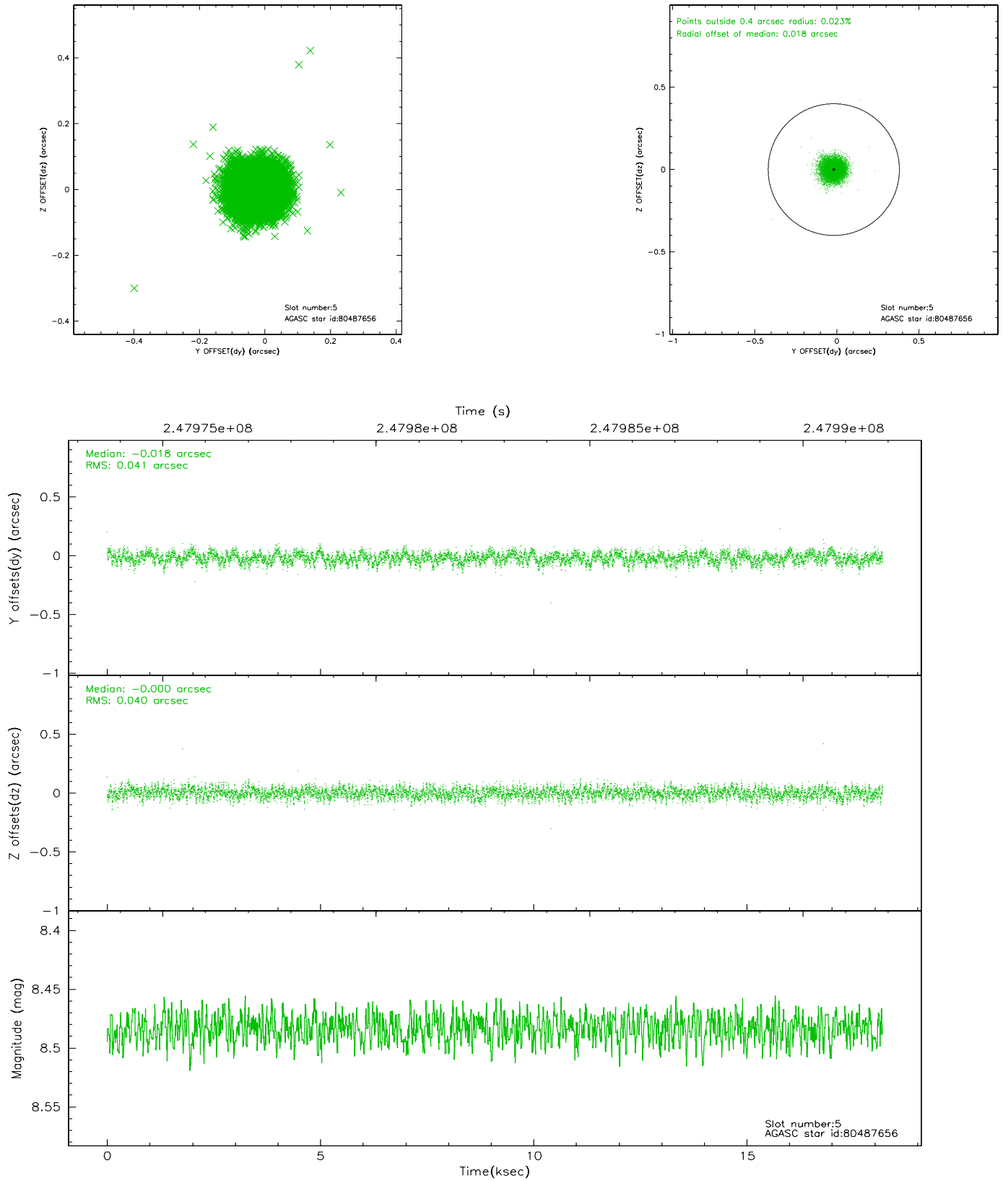
2.4.1 Slot 3



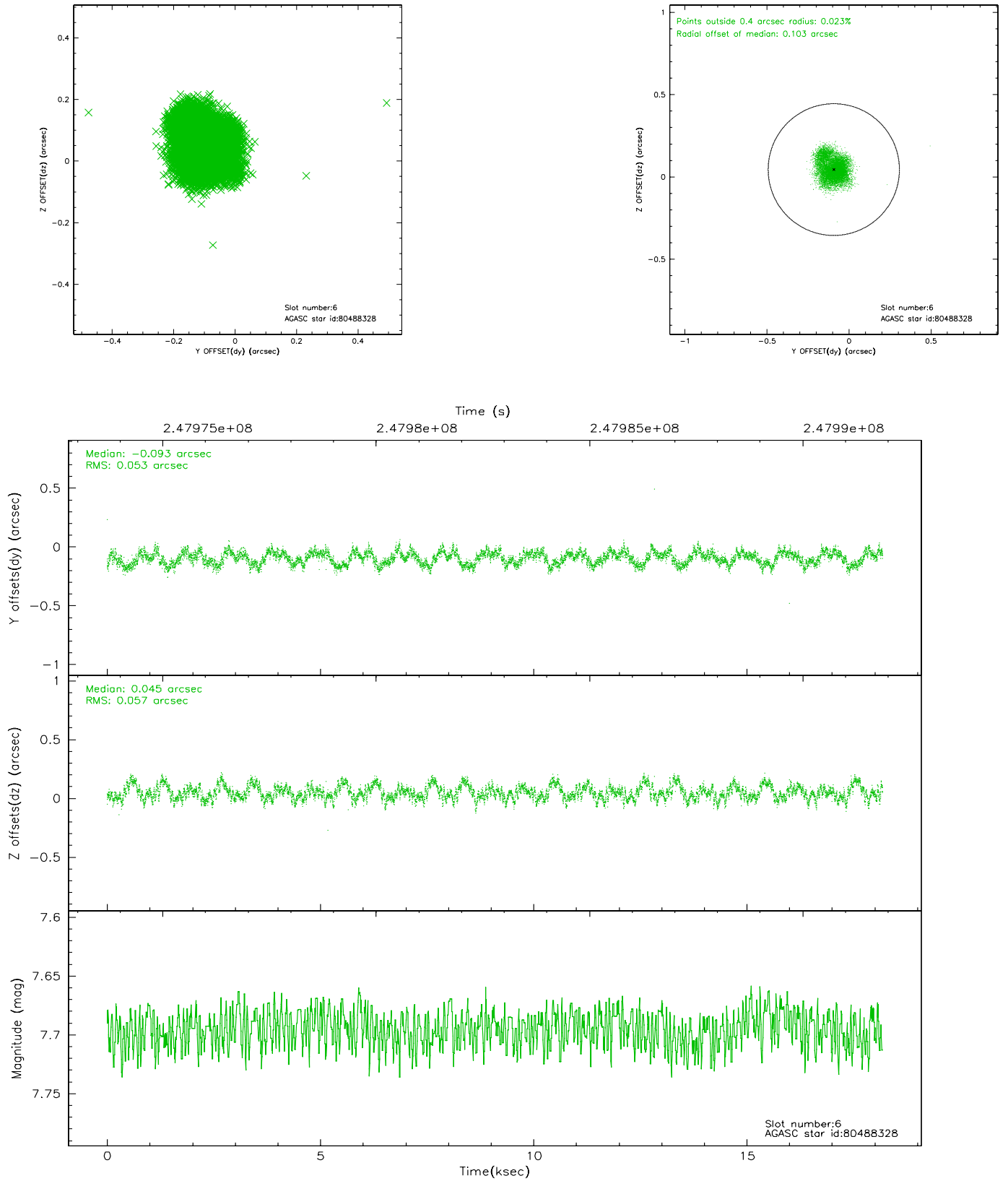
2.4.2 Slot 4



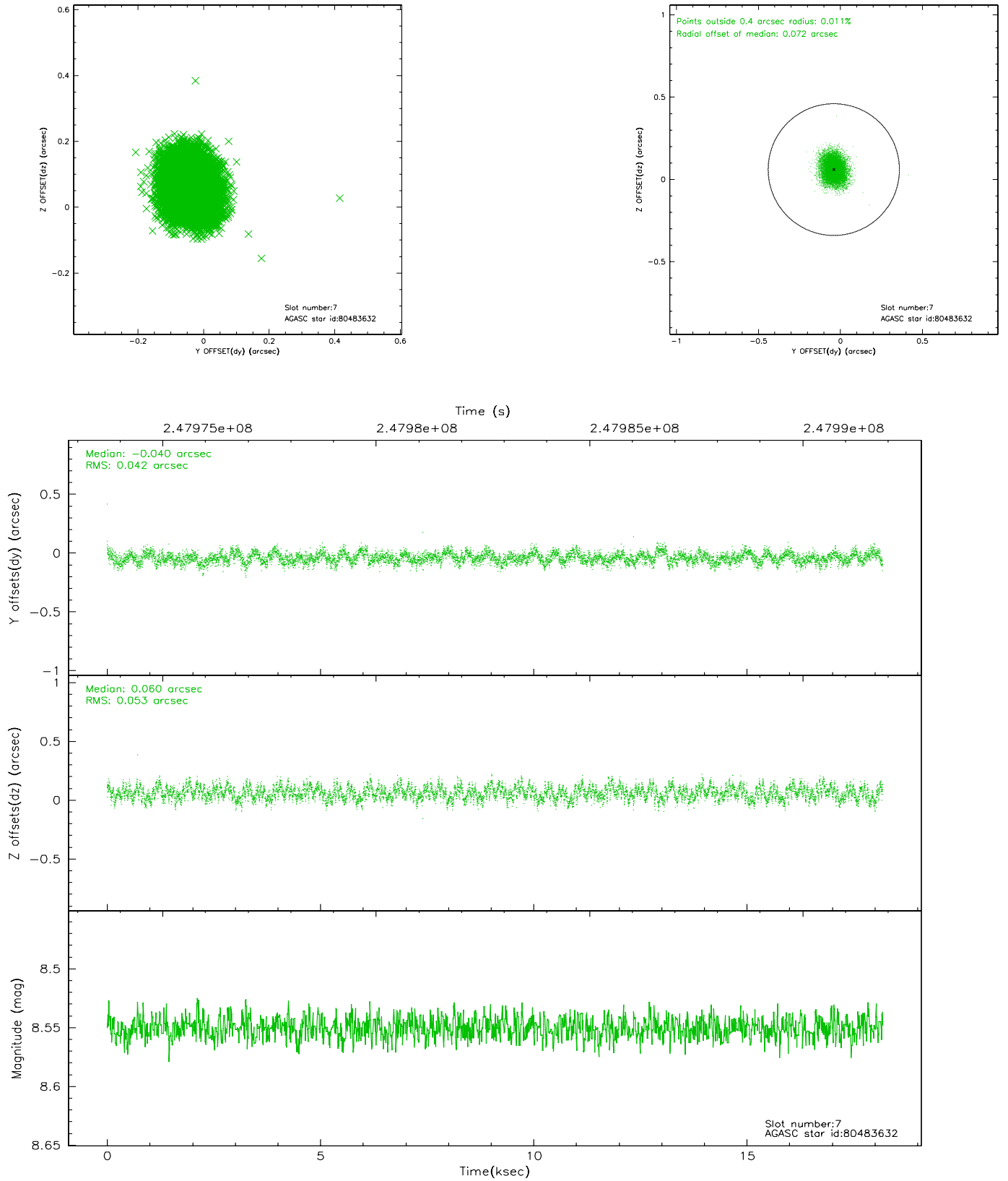
2.4.3 Slot 5



2.4.4 Slot 6

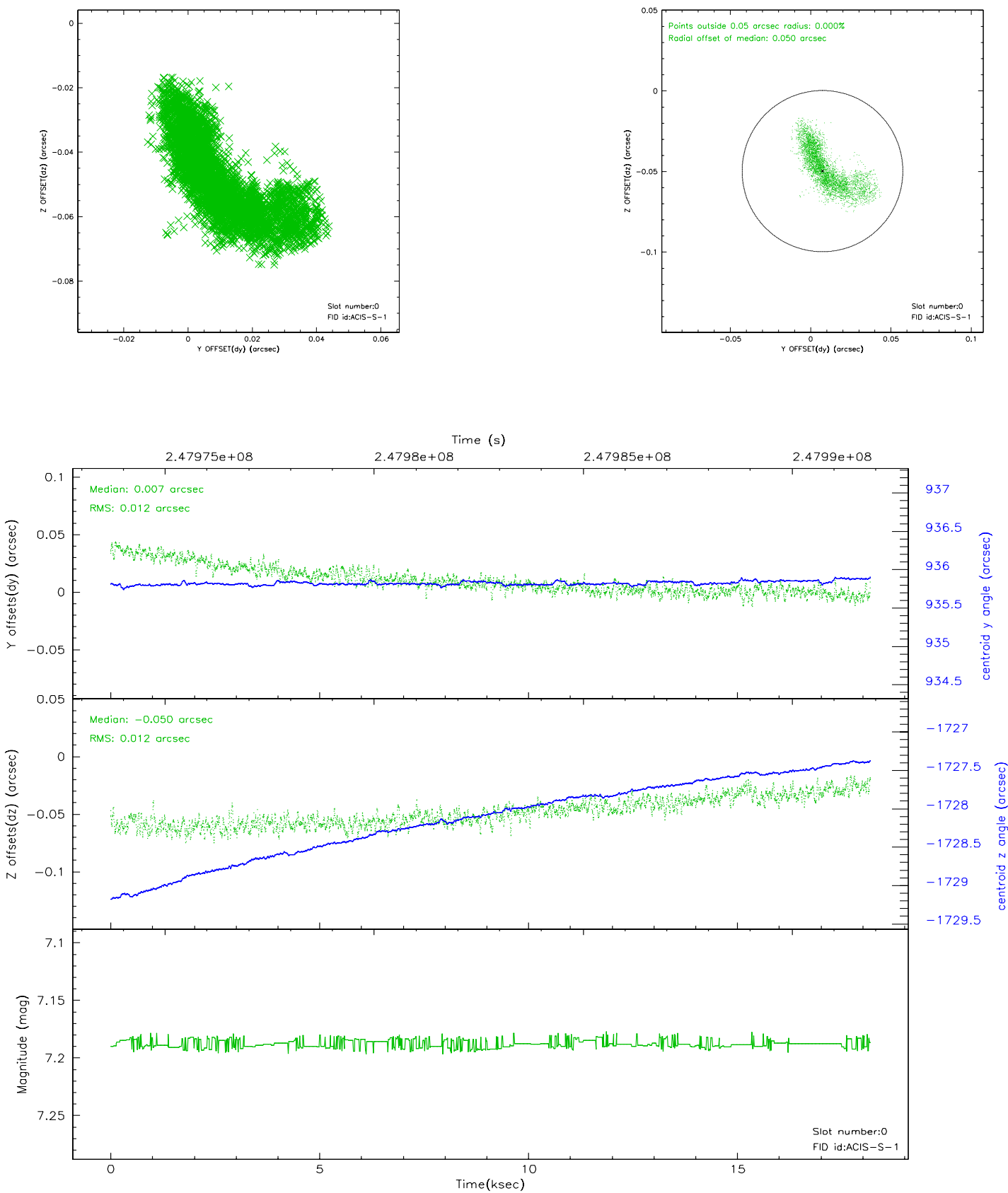


2.4.5 Slot 7

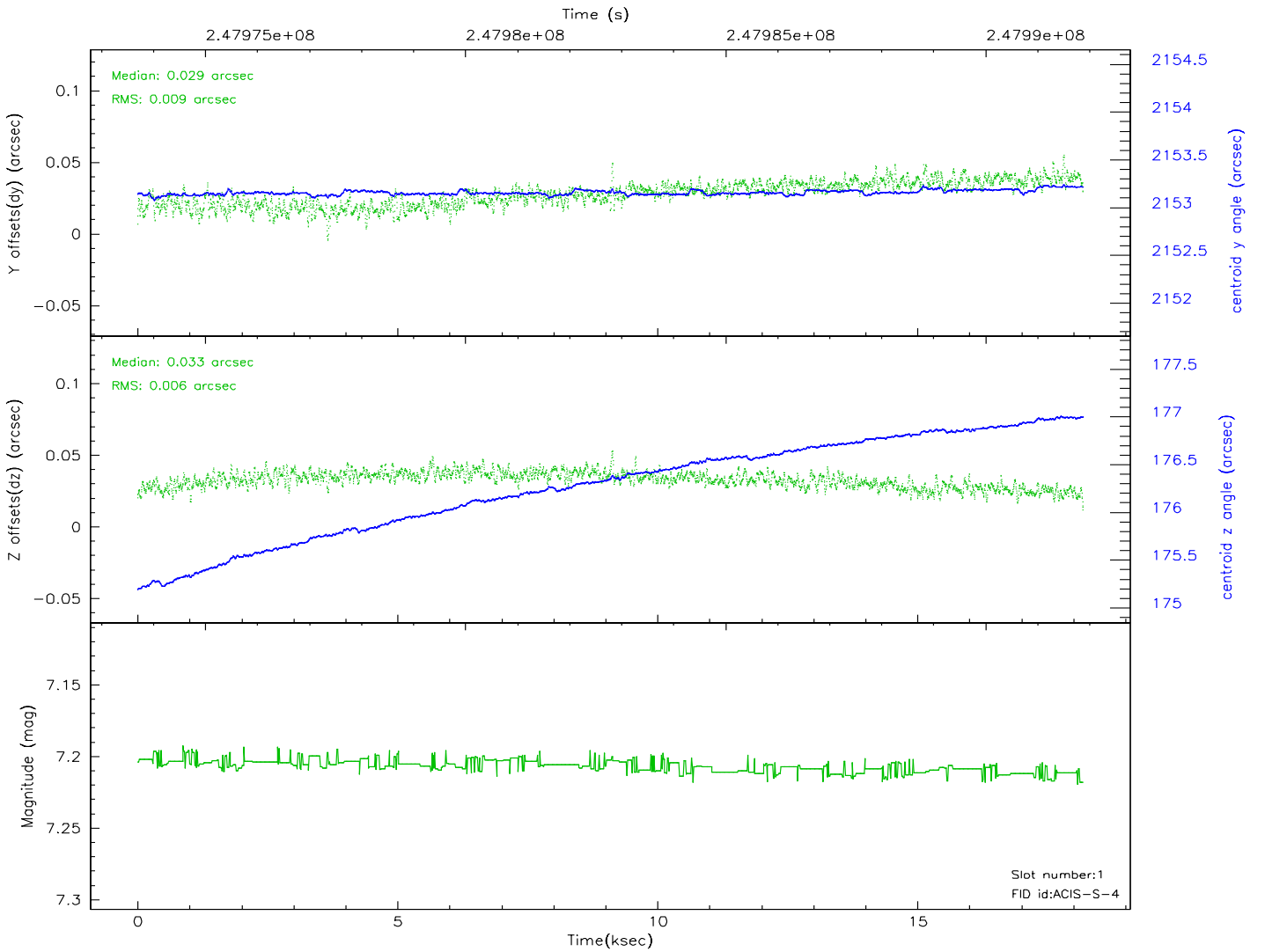
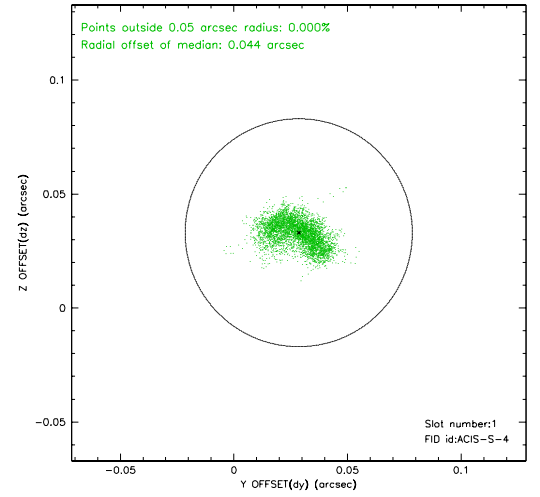
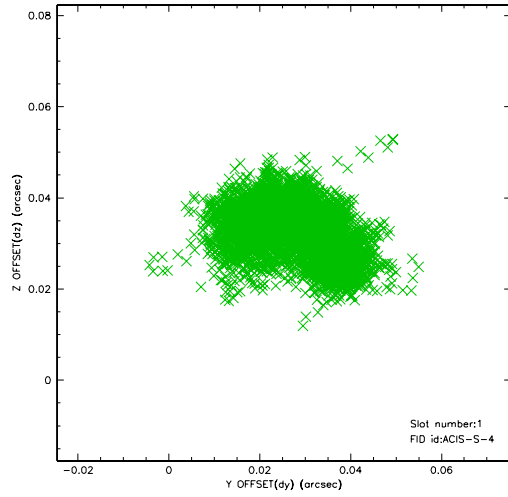


2.5 FID Slots

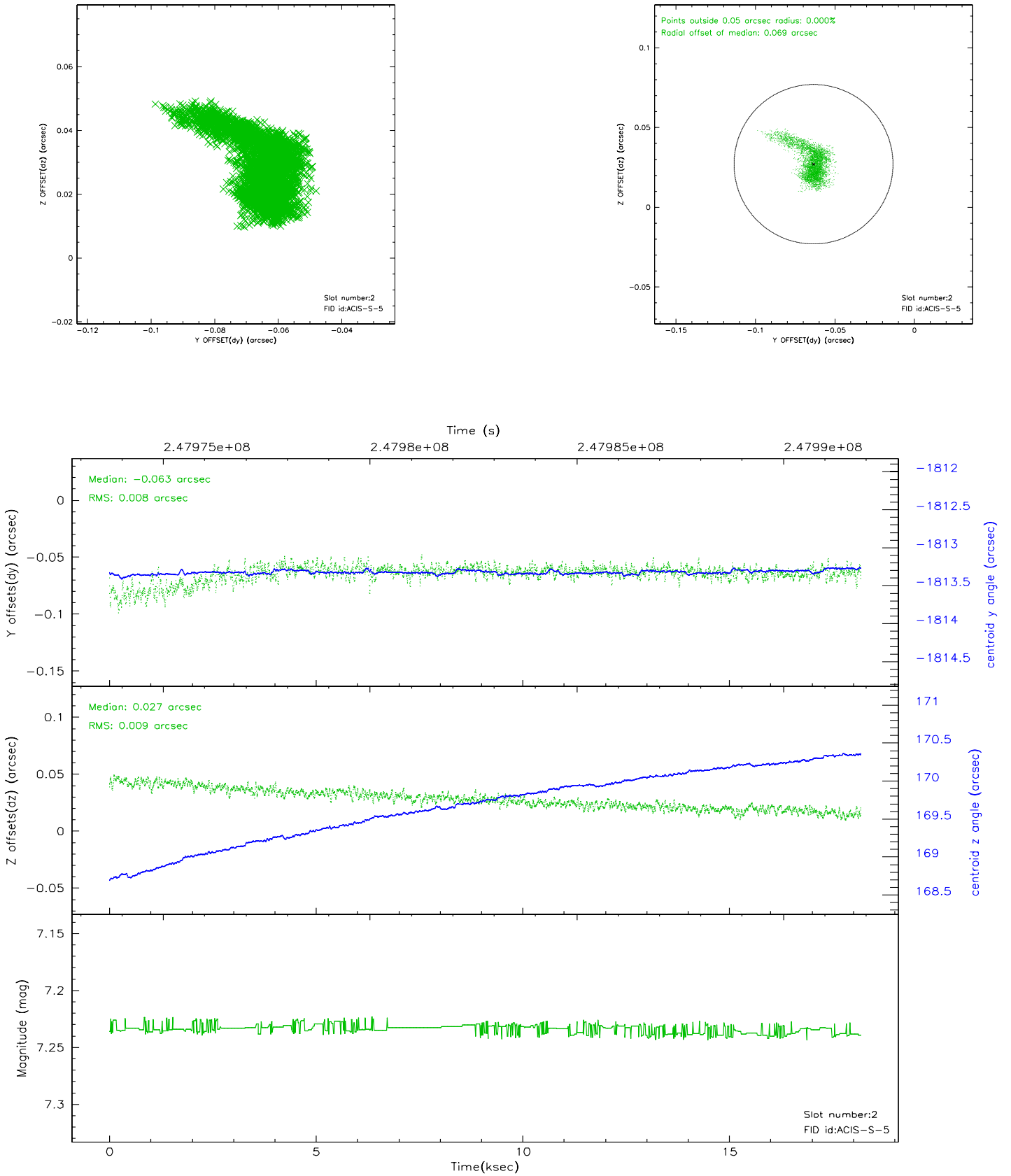
2.5.1 Slot 0



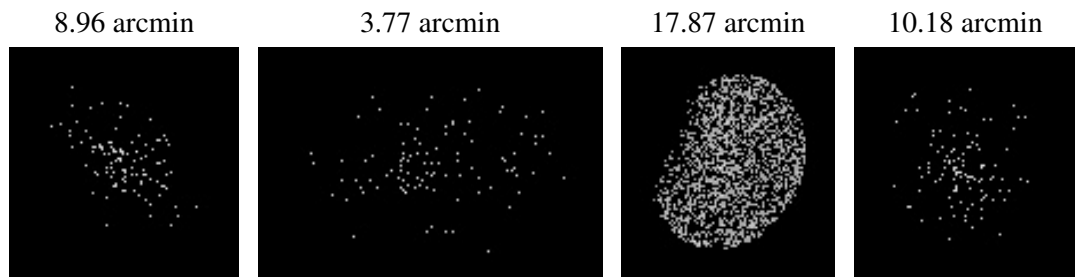
2.5.2 Slot 1



2.5.3 Slot 2



3 Point Sources



A Summary

A.1 Status

V&V Scientist	Joy Nichols
V&V Date (YYYY-MM-DD)	2006.04.07
V&V Edition	1
V&V Disposition and Status	OK
V&V Charge Time	18.18145

A.2 Comments