

V&V Reference Report

L2 ASCDS Version : 8.4.3

Observation 6701 - L2 Version 2
Chandra X-Ray Center

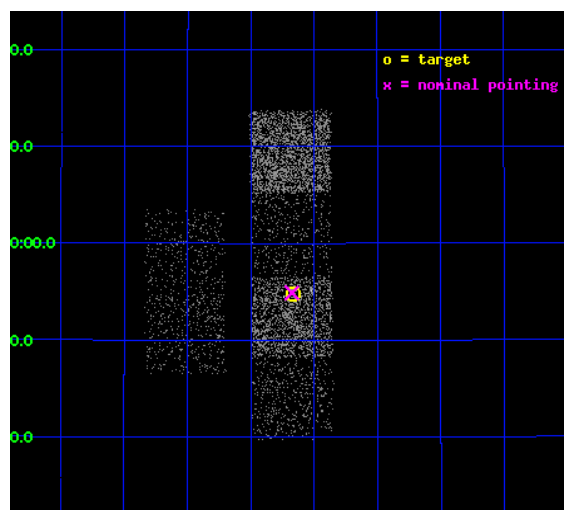
L2 Processing Date : Mar 21 2012

Contents

1	Front	2
2	OBI	3
2.1	OBI	3
2.1.1	Images	3
2.1.2	Bias	3
2.1.3	Parameters	4
2.1.4	Events	4
2.2	Compared Parameters	5
2.3	Aspect	6
2.4	Star Slots	9
2.4.1	Slot 3	9
2.4.2	Slot 4	10
2.4.3	Slot 5	11
2.4.4	Slot 6	12
2.4.5	Slot 7	13
2.5	FID Slots	14
2.5.1	Slot 0	14
2.5.2	Slot 1	15
2.5.3	Slot 2	16
A	Summary	17
A.1	Status	17
A.2	Comments	17

1 Front

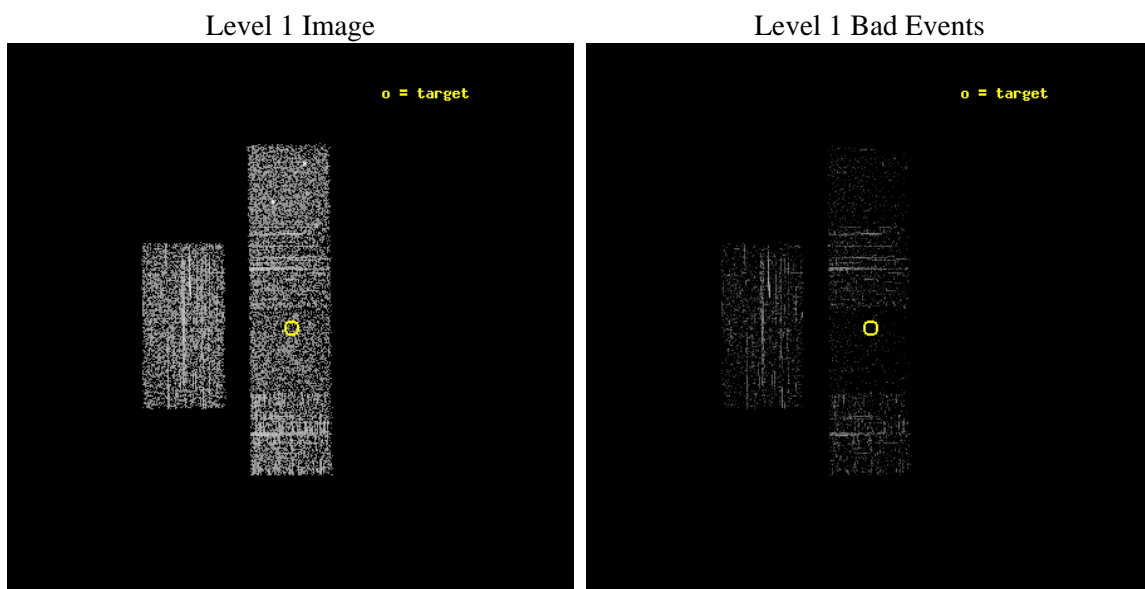
seq_num	500652	Sequence number
obs_id	6701	Observation id
title	A High Purity Discovery Program for Isolated Neutron Stars	Proposa
observer	Dr. Scott Anderson	Principal investigator
object	1RXS J092310.1+275448	Source name
dtcycle	0	
cycle	P	events from which exps? Prim/Second/Both
ra_targ	140.792083	Observer's specified target RA [deg]
dec_targ	27.913472	Observer's specified target Dec [deg]
ra_nom	140.79390933138	Nominal RA [deg]
dec_nom	27.914676845863	Nominal Dec [deg]
roll_nom	89.45318485046	Nominal Roll [deg]
revision	2	Processing version of data
ontime	1048.2773293853	Sum of GTIs [s]
livetime	1035.0034106438	Livetime [s]
ontime2	1048.3183693886	Sum of GTIs [s]
ontime3	1048.1542093754	Sum of GTIs [s]
ontime5	1048.236289382	Sum of GTIs [s]
ontime6	1048.1952493787	Sum of GTIs [s]
ontime7	1048.2773293853	Sum of GTIs [s]
ontime8	1048.1131694019	Sum of GTIs [s]
l2events	6303	Number of level 2 events



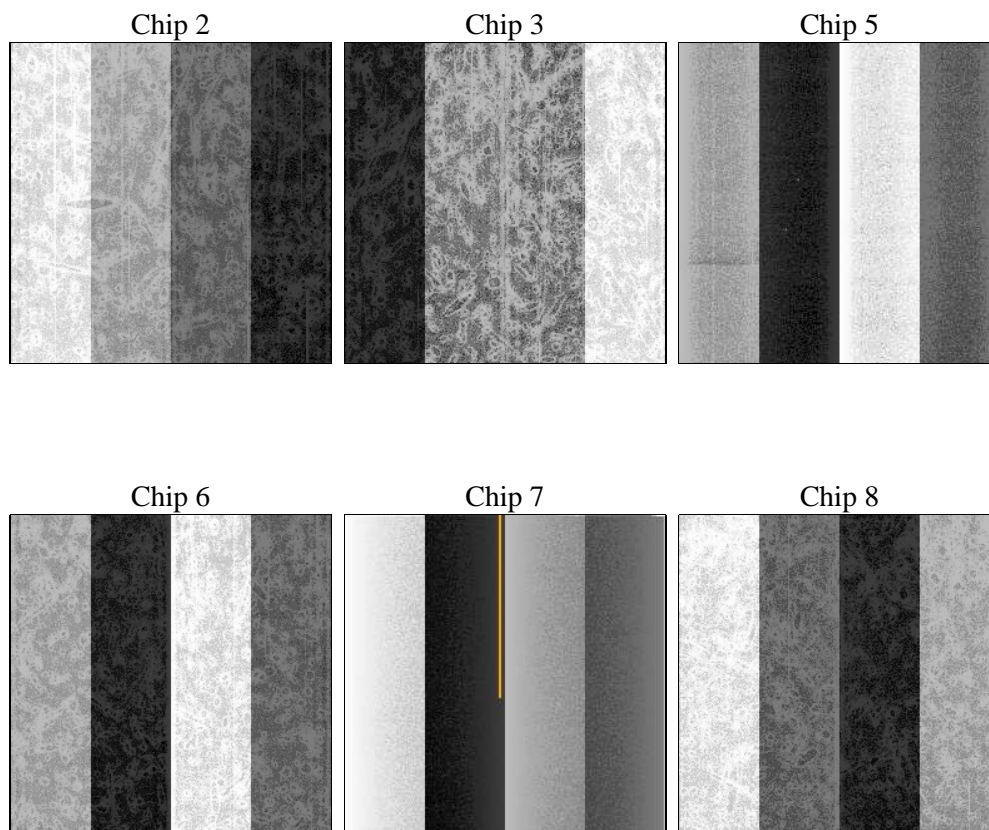
2 OBI

2.1 OBI

2.1.1 Images



2.1.2 Bias



2.1.3 Parameters

obi_num	0	Obi number	sched_exp_time	1000.000000	[s] Scheduled observation exposure time
ascdsver	8.4.3	Processing system revision	ontime	1048.2773293853	Sum of GTIs [s]
caldsver	4.4.8	 	ontime2	1048.3183693886	Sum of GTIs [s]
date	2012-03-22T00:23:28	Date and time of file creation	ontime3	1048.1542093754	Sum of GTIs [s]
revision	2	Processing version of data	ontime5	1048.236289382	Sum of GTIs [s]
			ontime6	1048.1952493787	Sum of GTIs [s]
			ontime7	1048.2773293853	Sum of GTIs [s]
			ontime8	1048.1131694019	Sum of GTIs [s]
			l1events	33805	Number of level 1 events

2.1.4 Events

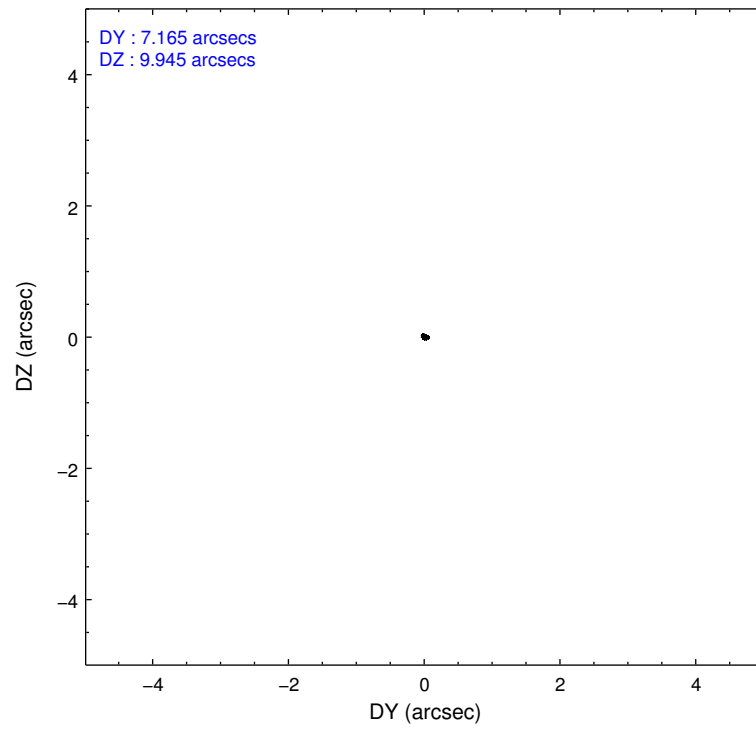
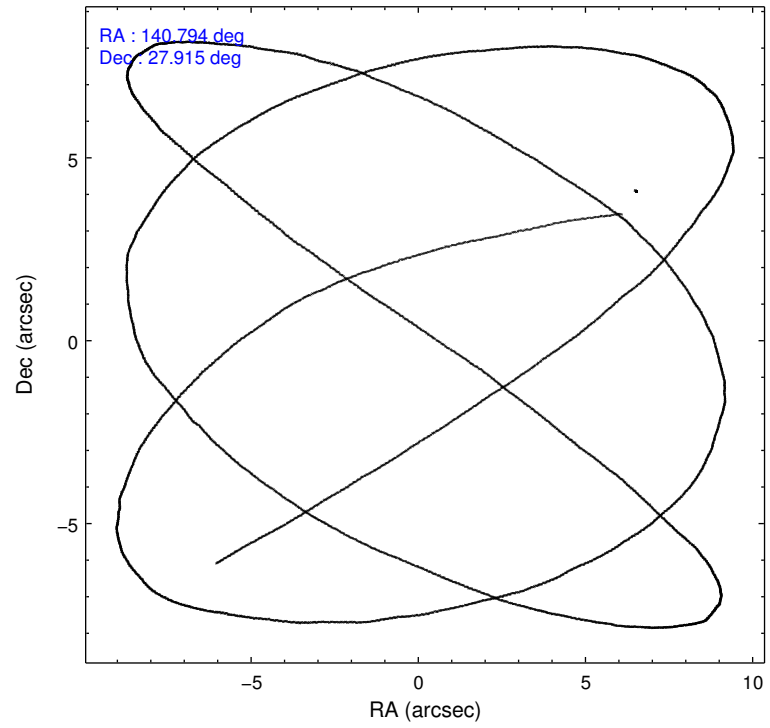
	ccd 2	ccd 3	ccd 5	ccd 6	ccd 7	ccd 8
level 1 events	6587	5453	5386	5834	3491	7054
rejected events	6131	4975	2011	5348	1393	5260
rejected %	93%	91%	37%	91%	39%	74%

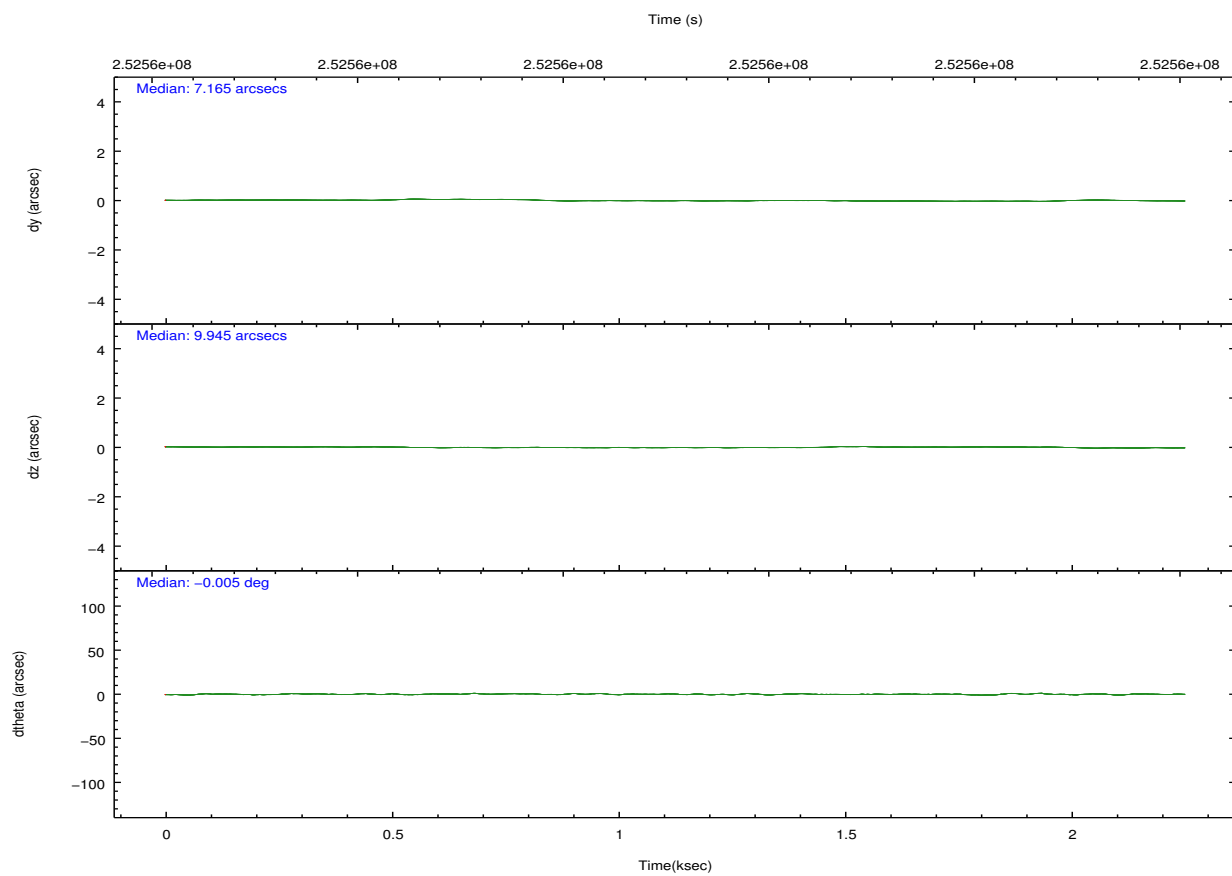
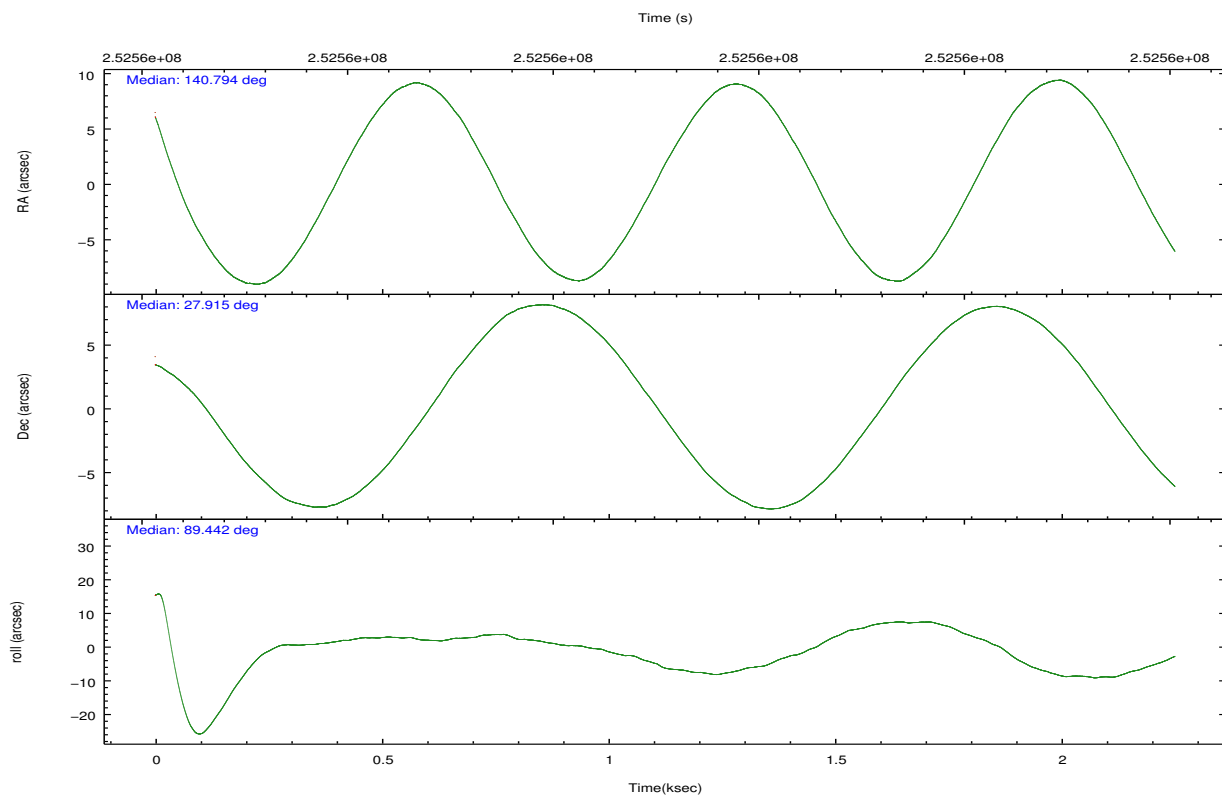
	ccd 2	ccd 3	ccd 5	ccd 6	ccd 7	ccd 8
grade 0 events	193	197	620	203	283	486
	2%	3%	11%	3%	8%	6%
grade 1 events	1	6	29	4	7	4
	0%	0%	0%	0%	0%	0%
grade 2 events	102	96	1148	112	490	382
	1%	1%	21%	1%	14%	5%
grade 3 events	49	64	150	49	226	216
	0%	1%	2%	0%	6%	3%
grade 4 events	54	56	135	53	236	154
	0%	1%	2%	0%	6%	2%
grade 5 events	91	111	393	105	317	211
	1%	2%	7%	1%	9%	2%
grade 6 events	59	67	1348	72	871	562
	0%	1%	25%	1%	24%	7%
grade 7 events	6038	4856	1563	5236	1061	5039
	91%	89%	29%	89%	30%	71%

2.2 Compared Parameters

Parameter	Planned	Actual	Parameter	Planned	Actual
Instrument	ACIS	ACIS	Obspar format version number	7	7
Detector	ACIS-235678	ACIS-235678	Obspar file type	PREDICTED	ACTUAL
Grating	NONE	NONE	Obspar update status	NONE	UPDATED
Data mode	VFAINT	VFAINT	Number of optional ACIS chips dropped	0	0
Observation mode	POINTING	POINTING	On-chip summing requested	N	N
[deg] Pointing RA	140.809509	140.7939093313812	Subarray requested	NONE	NONE
[deg] Pointing Dec	27.891170	27.9146768458633	Alternating exposures requested	N	N
[deg] Pointing Roll	89.288923	89.4531848504602	[s] Primary exposure time	0.000000	3.2
[mm] SIM focus pos	-0.684267	-0.6828225247311905			
[mm] SIM defocus	0	0.001444936568705701			
[mm] SIM translation stage pos	-190.132523	-190.1400660498719			
[mm] SIM translation stage offset	0	0.00754346686406393			
[s] Observation start time (MET)	252559394.184000	252557711.43294			
Observation start date	2006-01-02T03:22:09	2006-01-02T02:55:11			
[s] Observation end time (MET)	252560394.184000	252560779.77058			
Observation end date	2006-01-02T03:38:49	2006-01-02T03:46:19			
Read mode	TIMED	TIMED			

2.3 Aspect



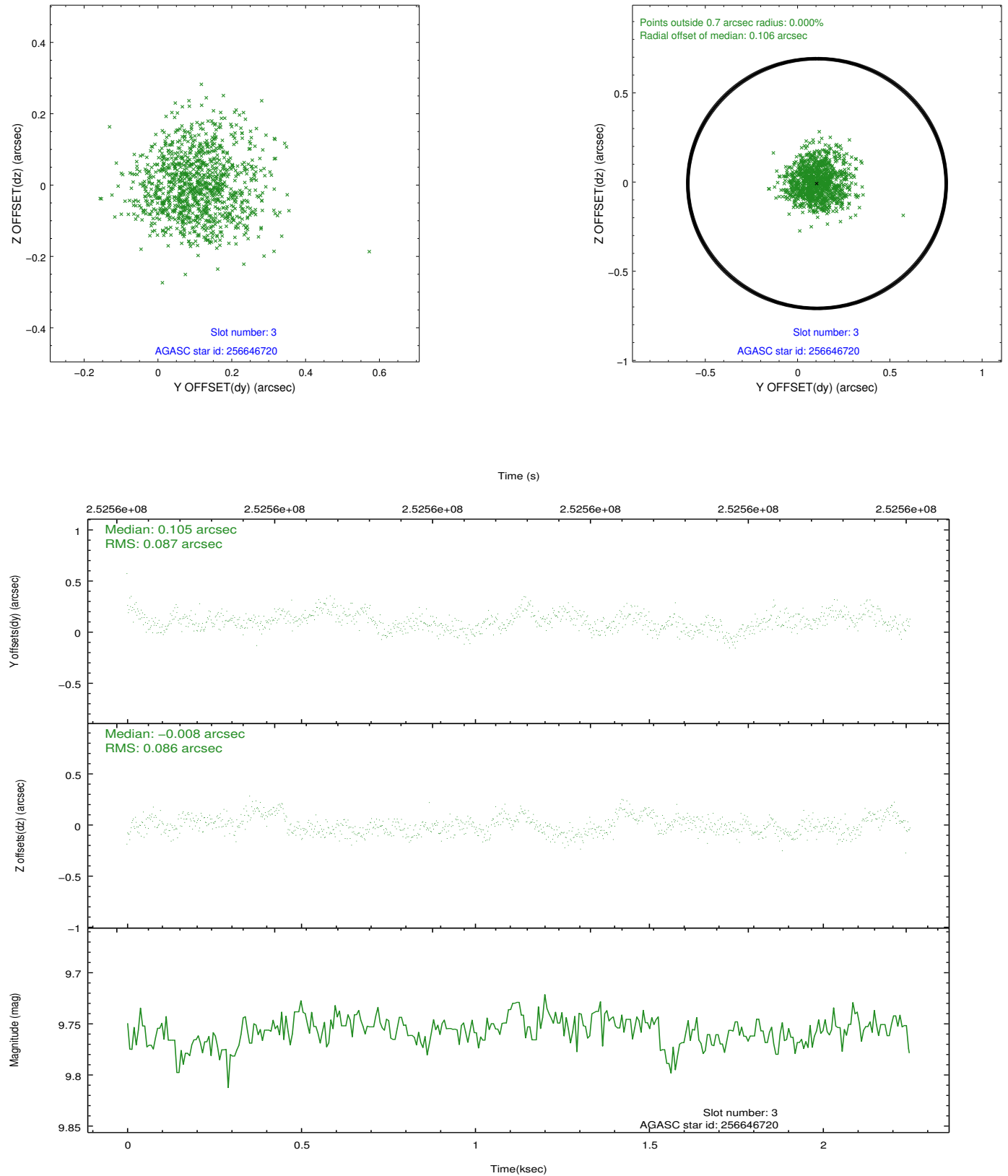


Slot Statistics

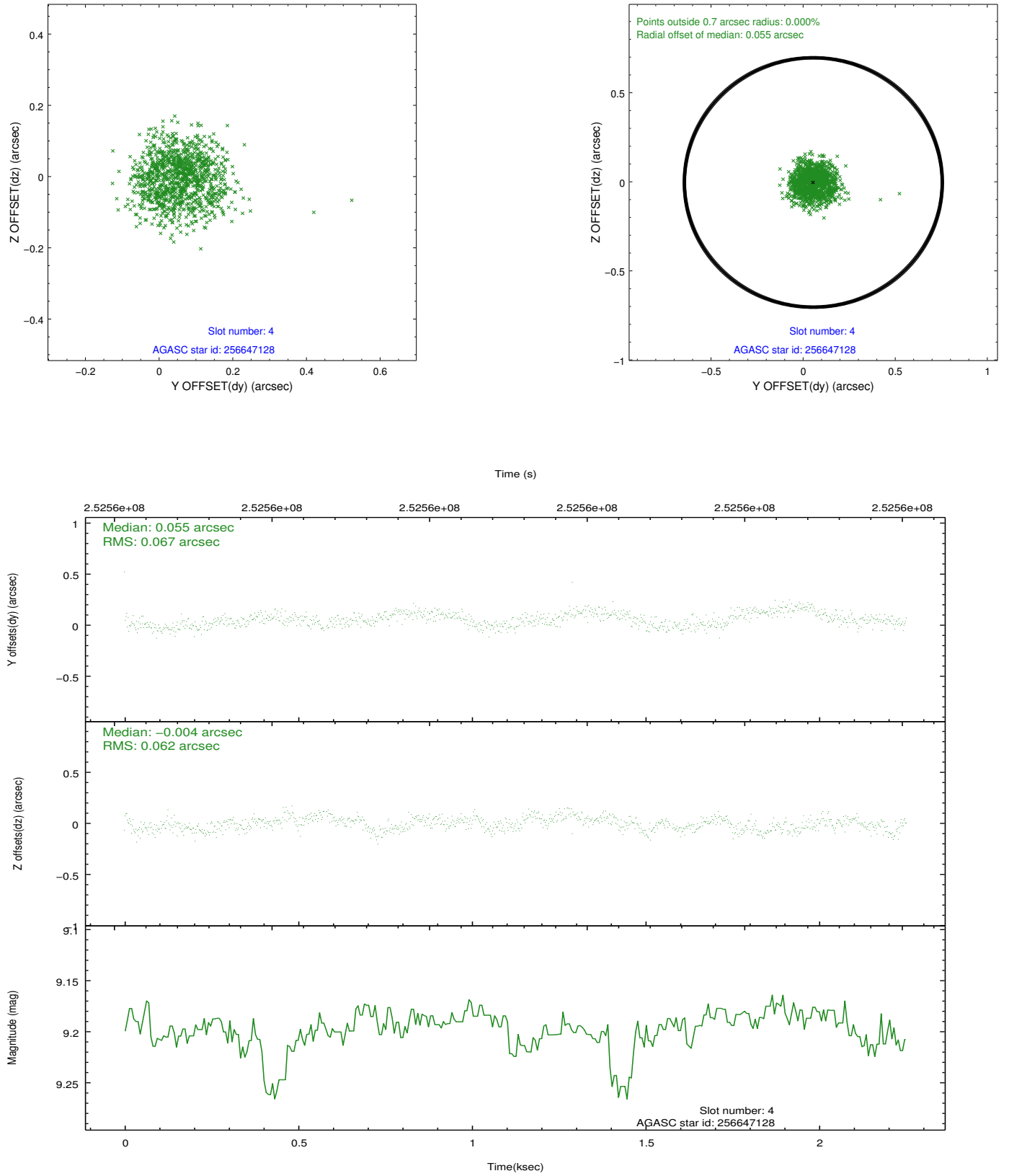
slot	status	id	mag	n_pts	med_dy	med_dz	dr1	dr2	ra	dec	mean_y	mean_z
0	FID	ACIS-S-2	7.11	550	-0.054	-0.028	0.007	0.011	0.000000	0.000000	-759.94	-1731.24
1	FID	ACIS-S-4	7.21	550	0.103	0.034	0.006	0.011	0.000000	0.000000	2152.14	174.38
2	FID	ACIS-S-5	7.24	550	-0.081	0.003	0.006	0.011	0.000000	0.000000	-1809.14	171.23
3	GUIDE	256646720	9.76	1099	0.105	-0.008	0.131	0.209	140.294400	28.530014	2283.04	1657.64
4	GUIDE	256647128	9.20	1093	0.055	-0.004	0.098	0.152	141.068045	28.116083	823.37	-809.66
5	GUIDE	256648280	9.84	1092	0.003	0.139	0.112	0.195	141.343782	28.315577	1553.99	-1675.08
6	GUIDE	256648392	9.51	1099	-0.048	-0.032	0.128	0.209	140.333033	28.458244	2027.07	1531.59
7	GUIDE	256648488	7.97	1098	-0.105	-0.106	0.059	0.096	140.429899	28.500209	2181.37	1229.33

2.4 Star Slots

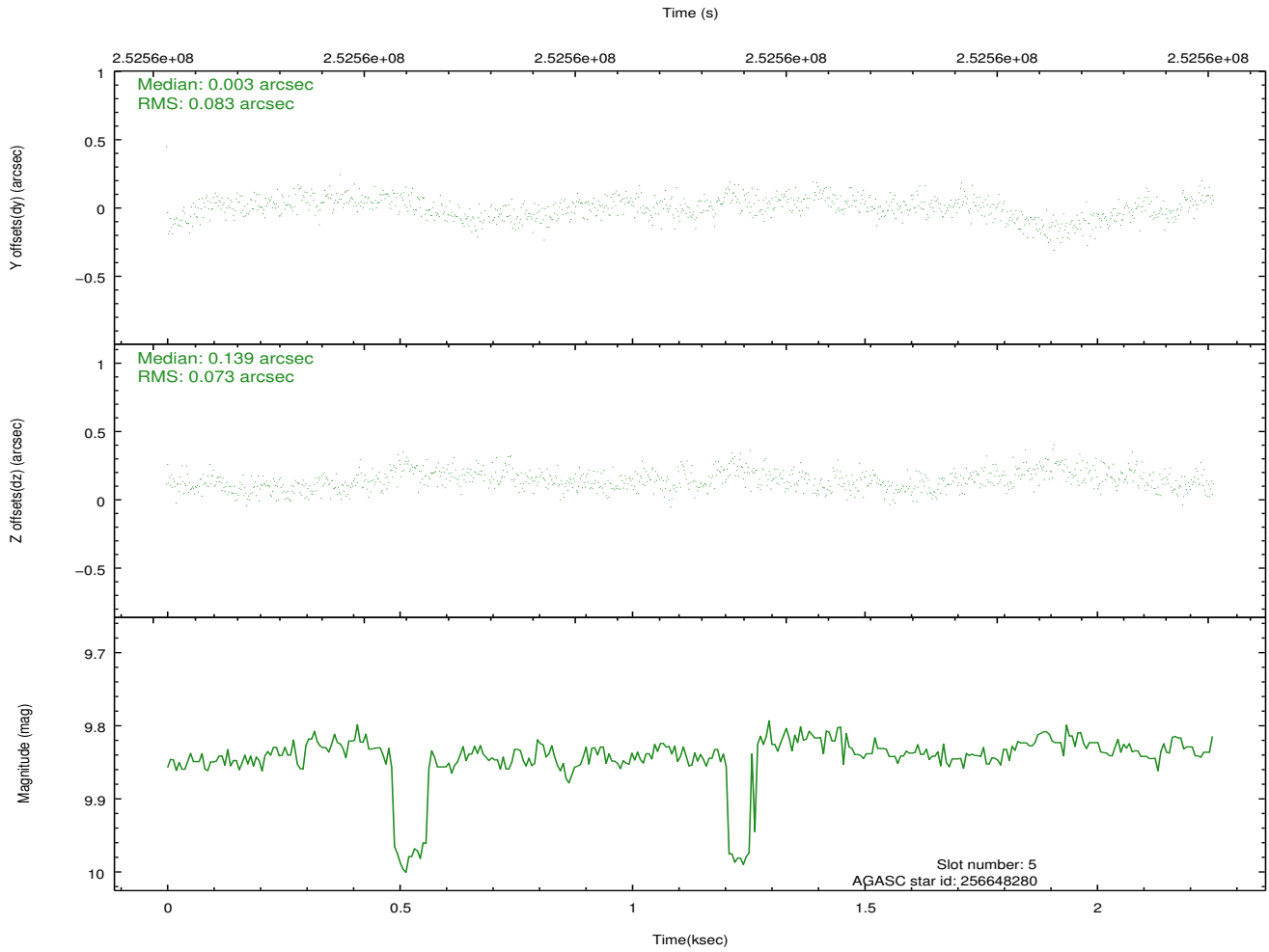
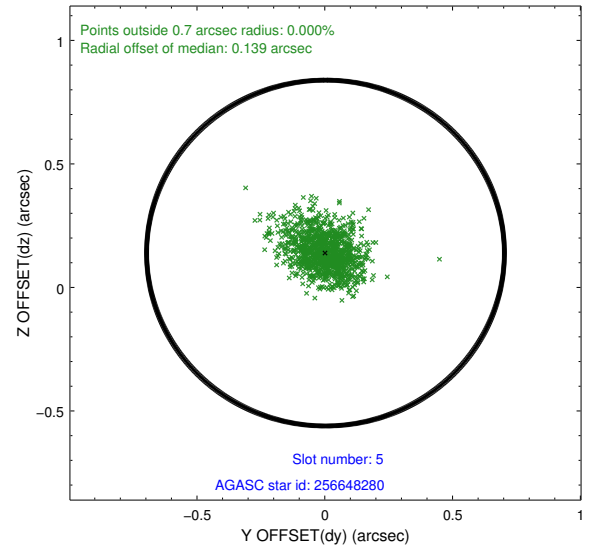
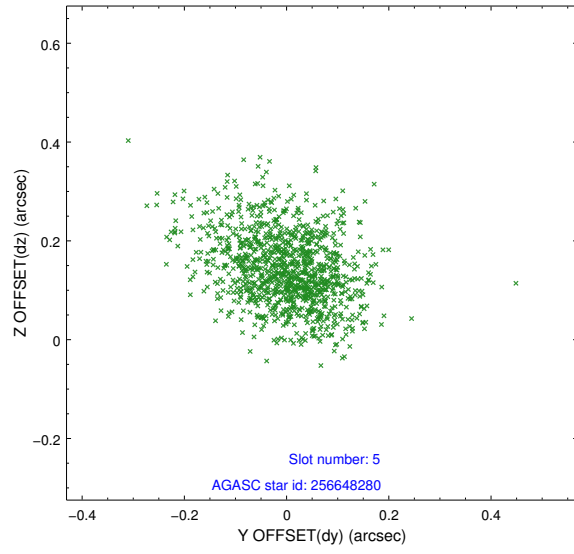
2.4.1 Slot 3



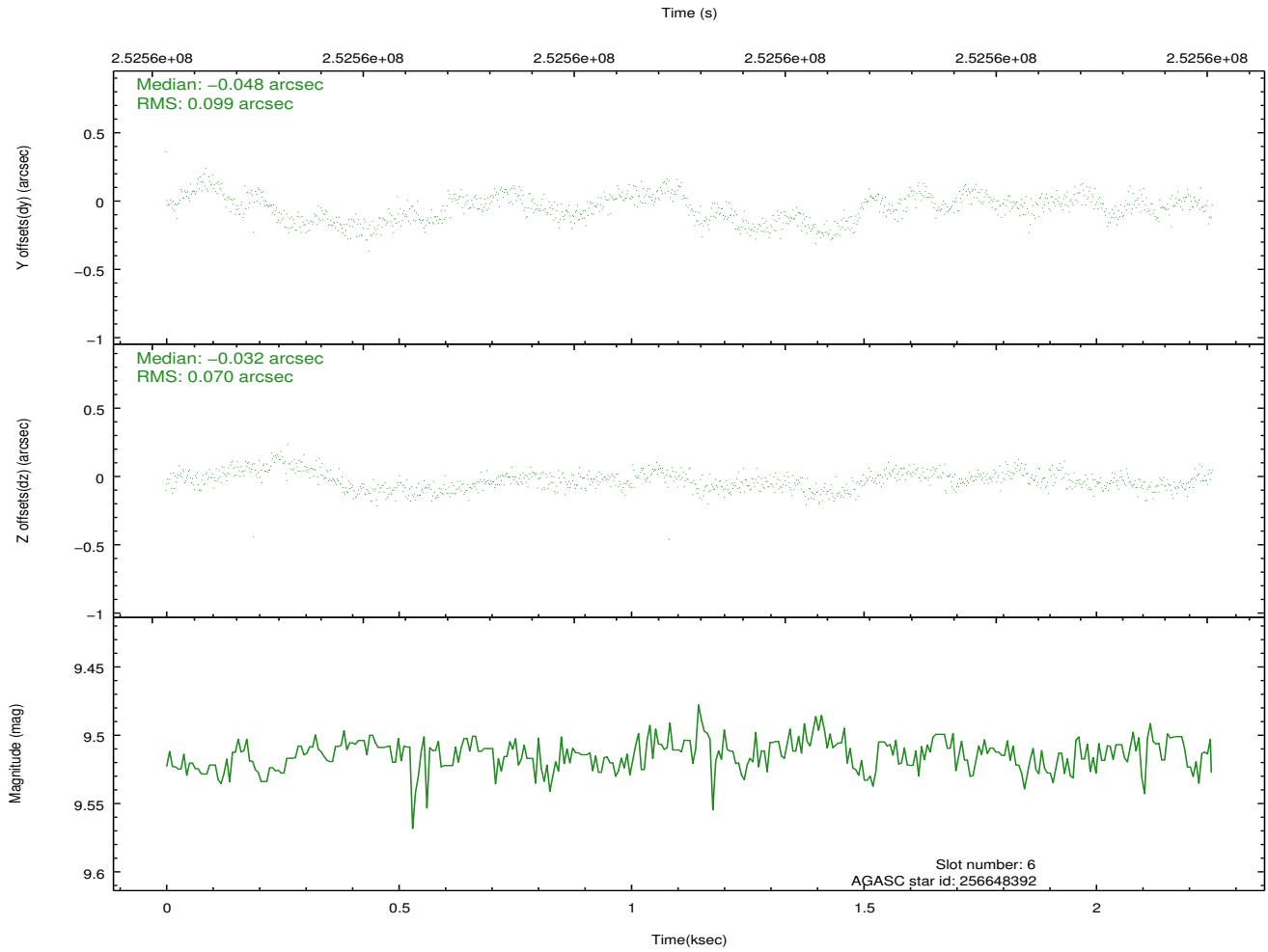
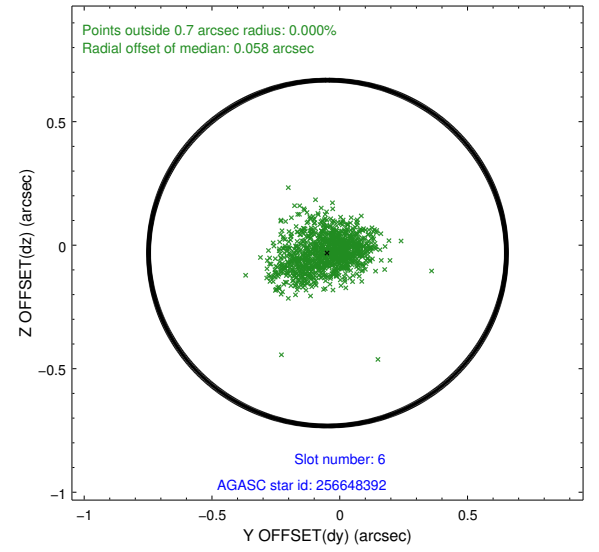
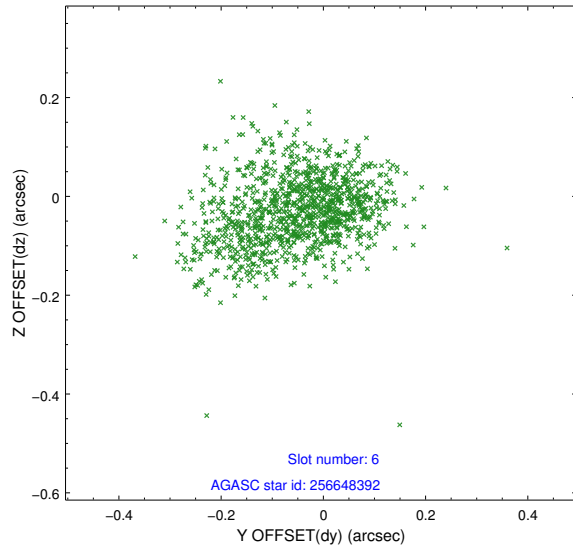
2.4.2 Slot 4



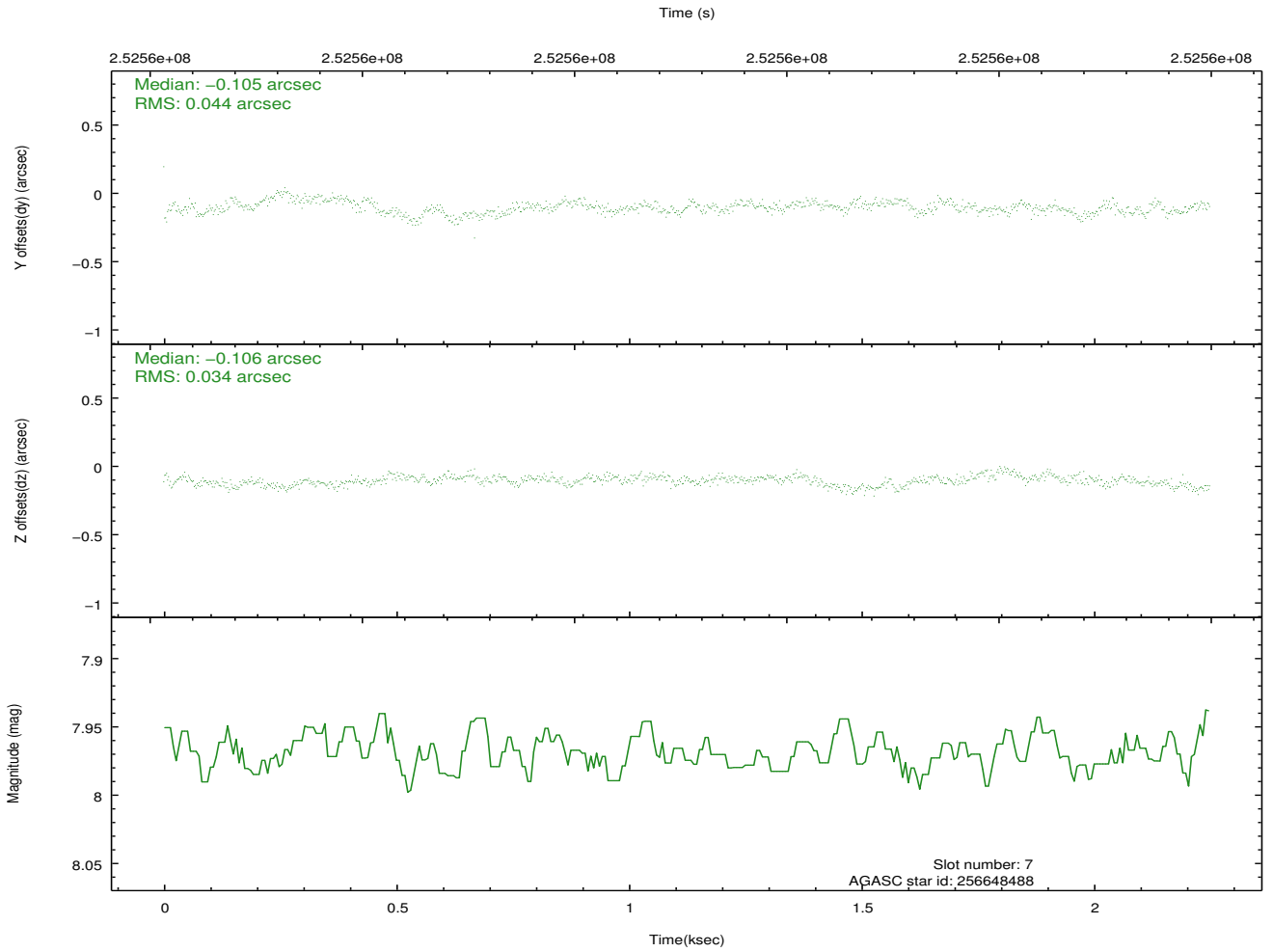
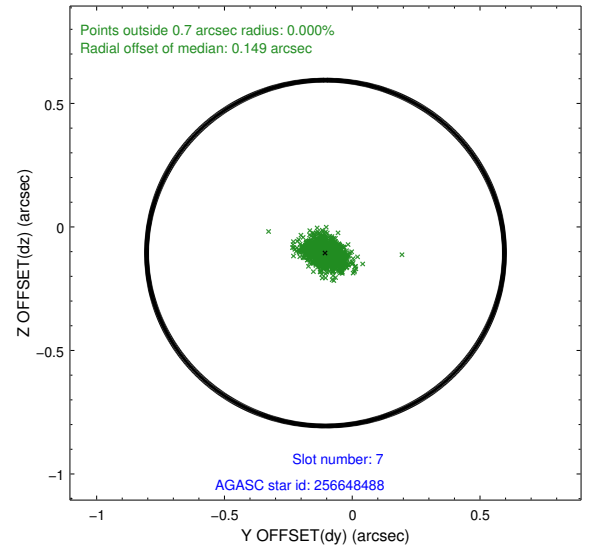
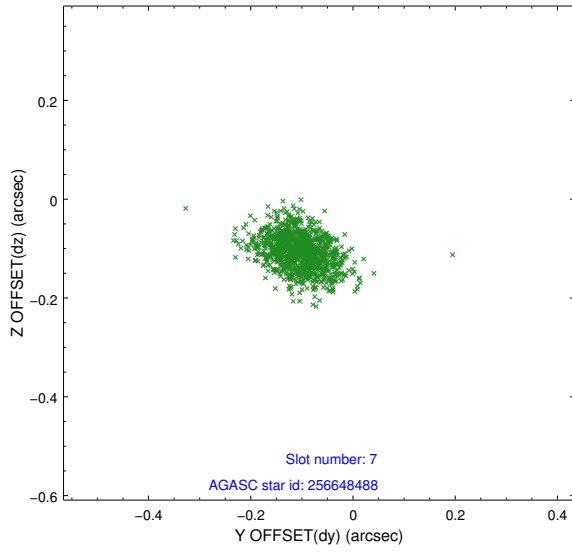
2.4.3 Slot 5



2.4.4 Slot 6

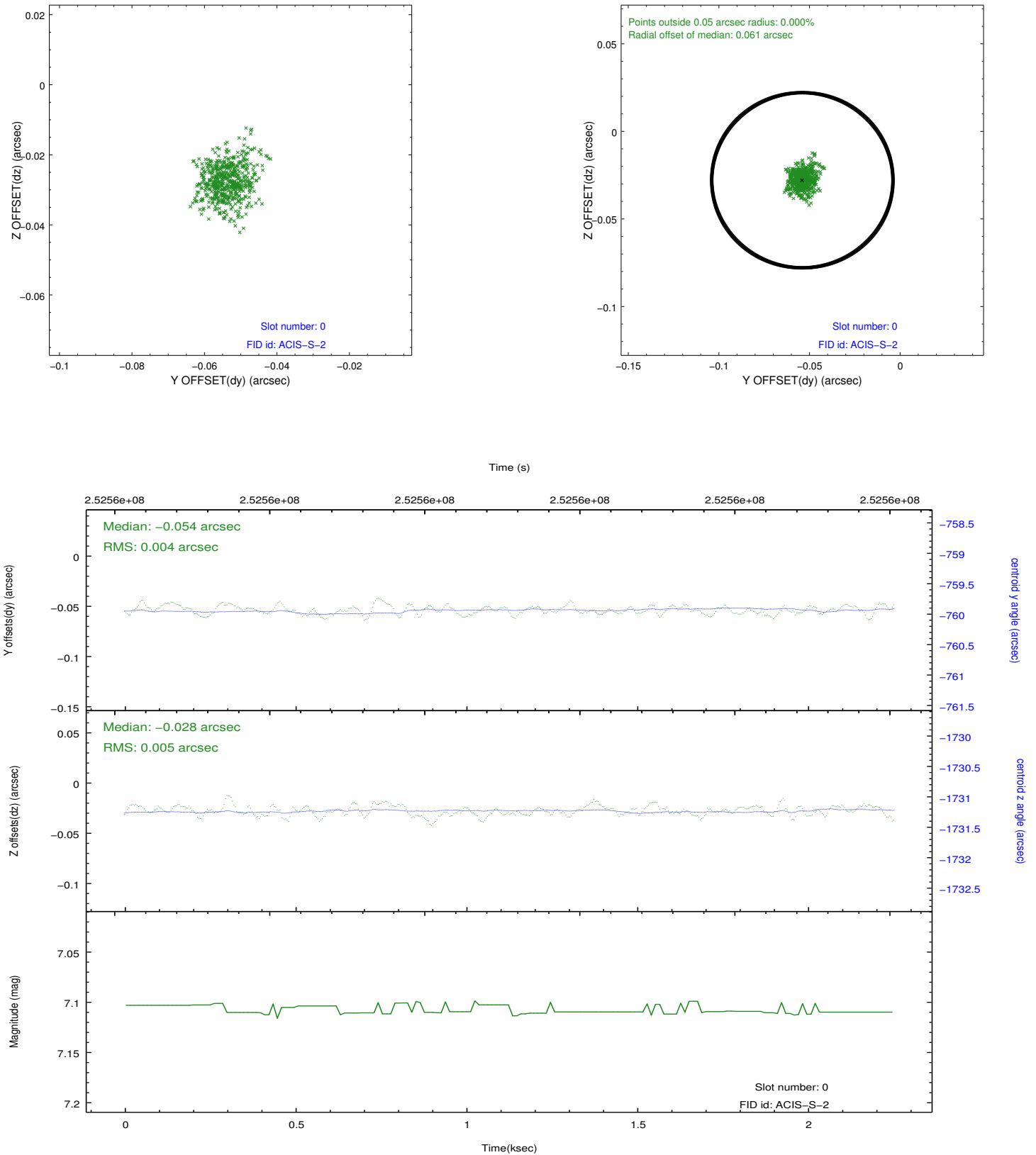


2.4.5 Slot 7

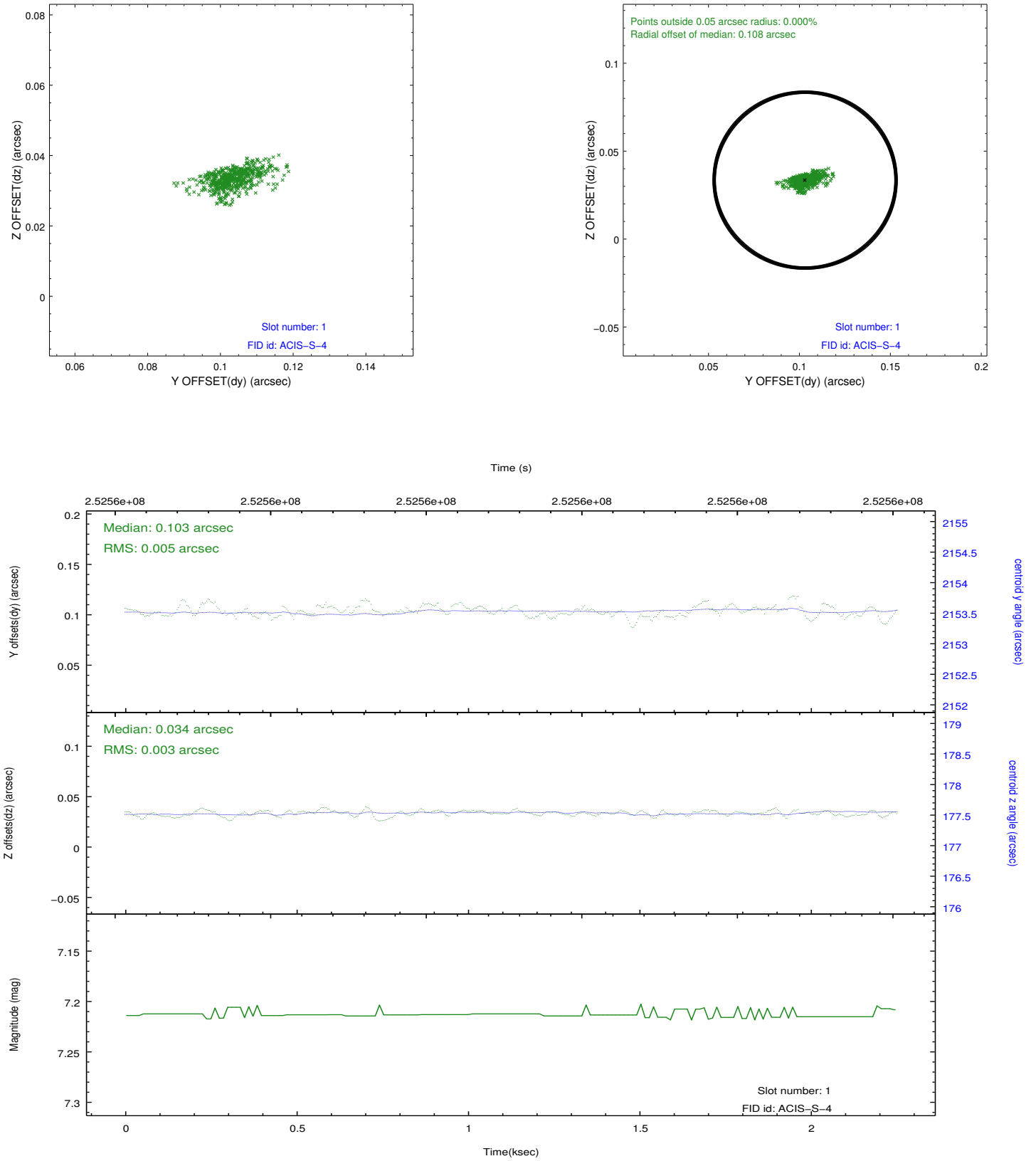


2.5 FID Slots

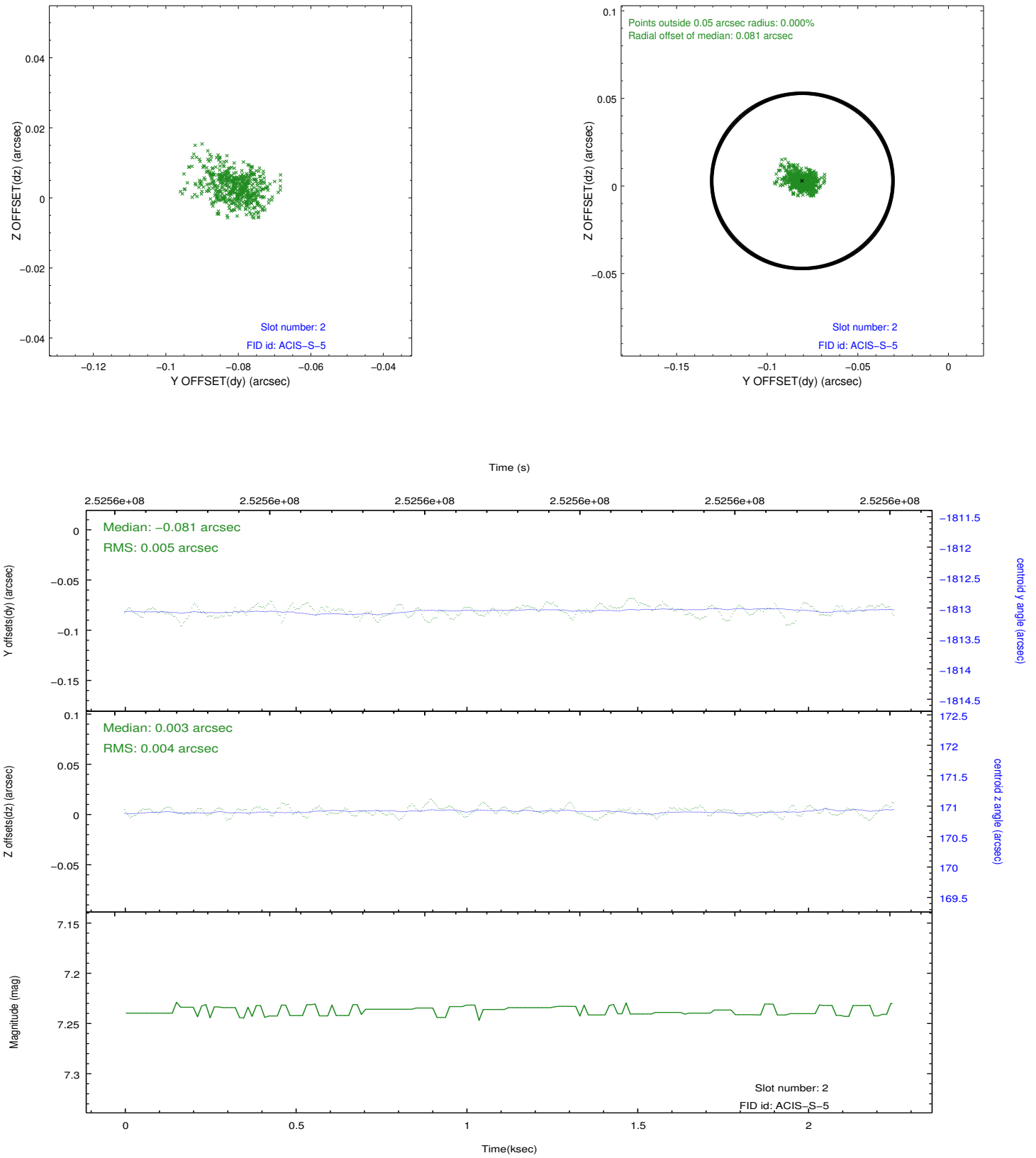
2.5.1 Slot 0



2.5.2 Slot 1



2.5.3 Slot 2



A Summary

A.1 Status

V&V Scientist	Jen Lauer
V&V Date (YYYY-MM-DD)	2012.03.22
V&V Edition	1
V&V Disposition and Status	OK
V&V Charge Time	1.049599

A.2 Comments