

# V&V Reference Report

## L2 ASCDS Version : 7.6.7.1

Observation 6341 - L2 Version 003  
Chandra X-Ray Center

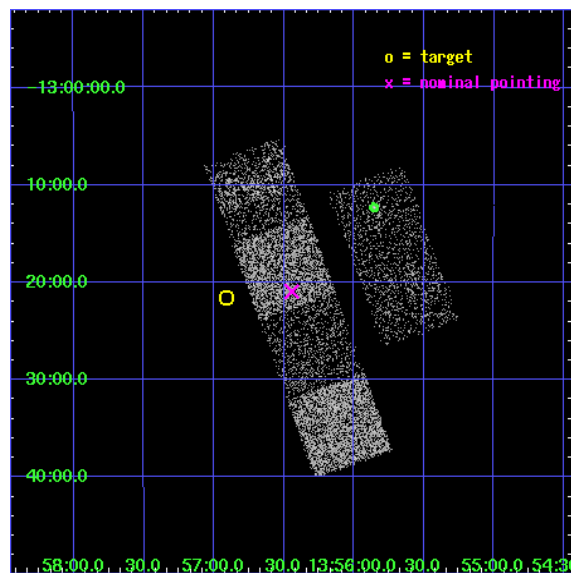
L2 Processing Date : Mar 14 2006

## Contents

<b>1</b>	<b>Front</b>	<b>2</b>
<b>2</b>	<b>OBI</b>	<b>3</b>
2.1	OBI . . . . .	3
2.1.1	Images . . . . .	3
2.1.2	Bias . . . . .	3
2.1.3	Parameters . . . . .	4
2.1.4	Events . . . . .	4
2.2	Compared Parameters . . . . .	5
2.3	Aspect . . . . .	6
2.4	Star Slots . . . . .	9
2.4.1	Slot 3 . . . . .	9
2.4.2	Slot 4 . . . . .	10
2.4.3	Slot 5 . . . . .	11
2.4.4	Slot 6 . . . . .	12
2.4.5	Slot 7 . . . . .	13
2.5	FID Slots . . . . .	14
2.5.1	Slot 0 . . . . .	14
2.5.2	Slot 1 . . . . .	15
2.5.3	Slot 2 . . . . .	16
<b>3</b>	<b>Point Sources</b>	<b>17</b>
<b>A</b>	<b>Summary</b>	<b>18</b>
A.1	Status . . . . .	18
A.2	Comments . . . . .	18

# 1 Front

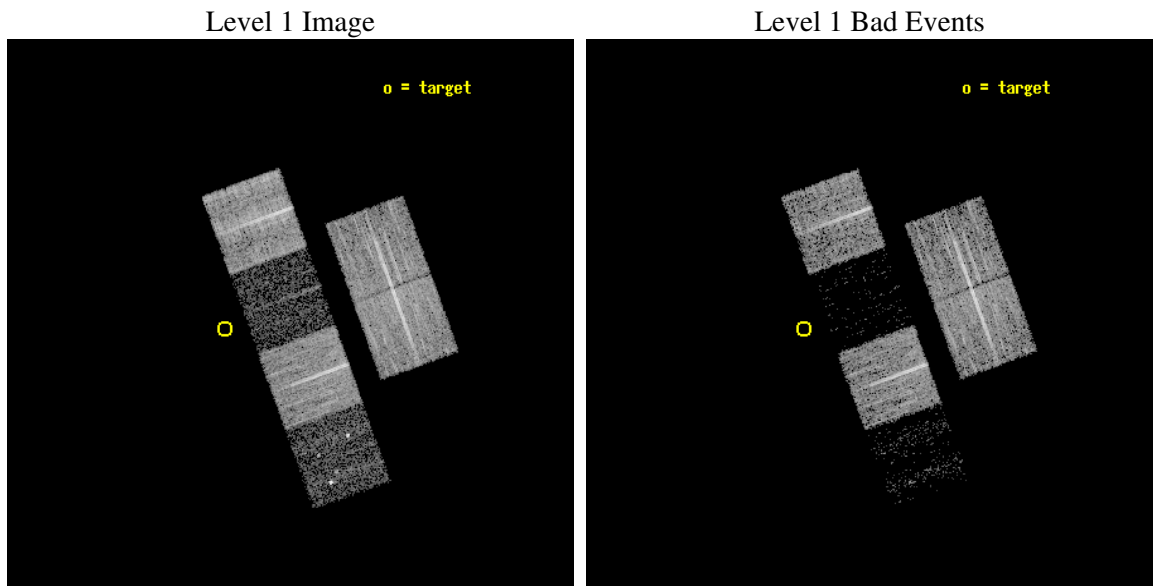
seq_num	100057
obs_id	6341
title	Comet 9P/Tempel 1 During the Deep Impact Encounter
observer	Dr. Carey Lisse
object	9P/Tempel 1
dtcycle	0
cycle	P
ra_targ	209.227379
dec_targ	-13.35904
ra_nom	209.110627
dec_nom	-13.349134
roll_nom	250.079468
revision	3
ontime	8508.7999683022
livetime	8401.0564197194
ontime2	8508.7999683022
ontime3	8508.7999683022
ontime5	8508.7999683022
ontime6	8508.7999683022
ontime7	8508.7999683022
ontime8	8505.5589980185
l2events	12731



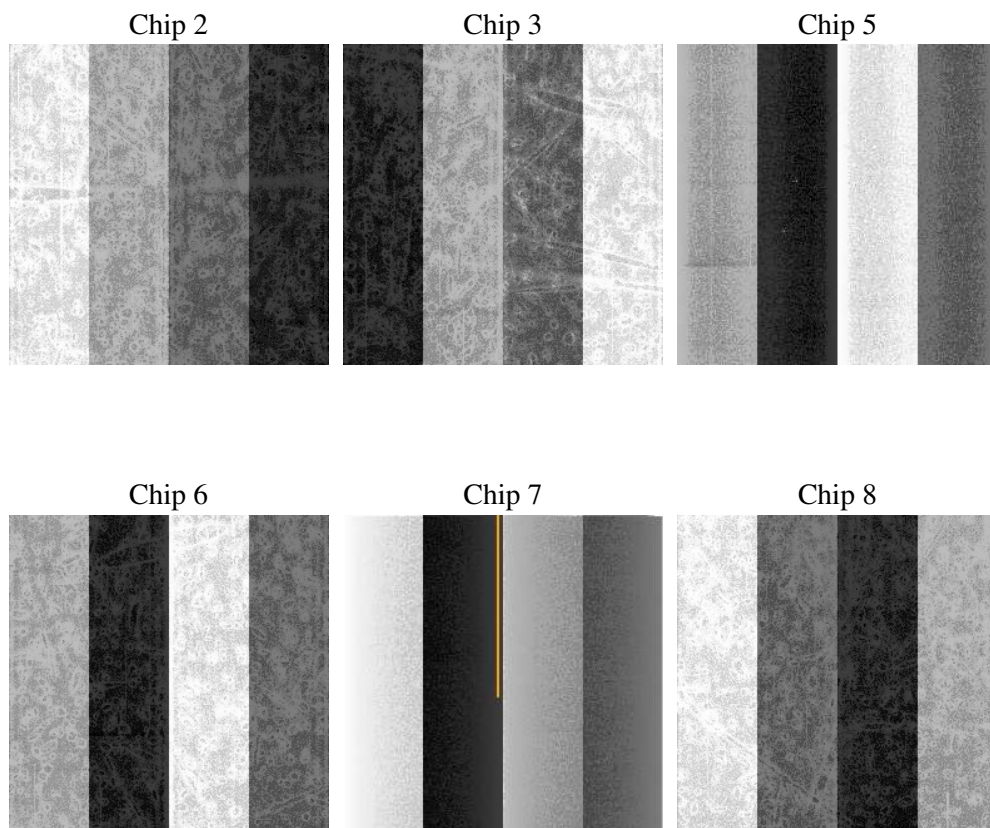
## 2 OBI

### 2.1 OBI

#### 2.1.1 Images



#### 2.1.2 Bias



### 2.1.3 Parameters

obi_num	1
ascdsver	7.6.7.1
caldbver	3.2.1
date	2006-03-14T15:52:18
revision	3

sched_exp_time	8325.000000
ontime	8834.9747641087
ontime2	8834.9747641087
ontime3	8834.9747641087
ontime5	8834.9747641087
ontime6	8834.9747641087
ontime7	8834.9747641087
ontime8	8831.7337938249
l1events	168184

### 2.1.4 Events

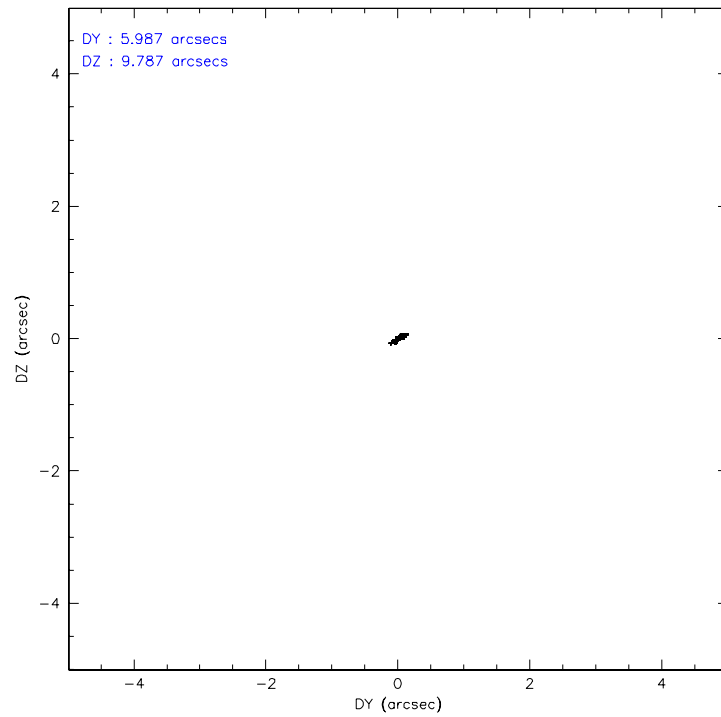
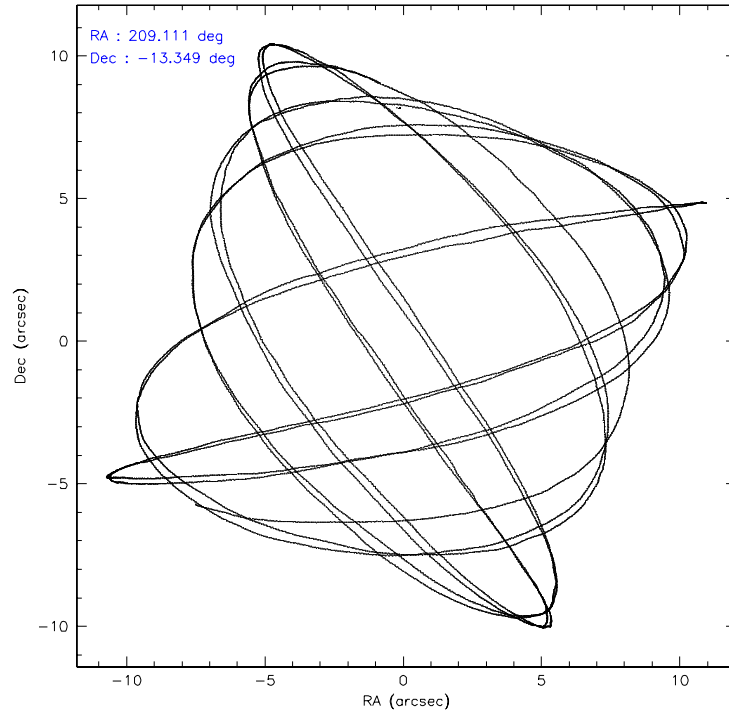
	ccd 2	ccd 3	ccd 5	ccd 6	ccd 7	ccd 8
level 1 events	39771	34725	8149	36939	5295	43305
rejected events	37983	33527	2195	35356	1147	32443
rejected %	95%	96%	26%	95%	21%	74%

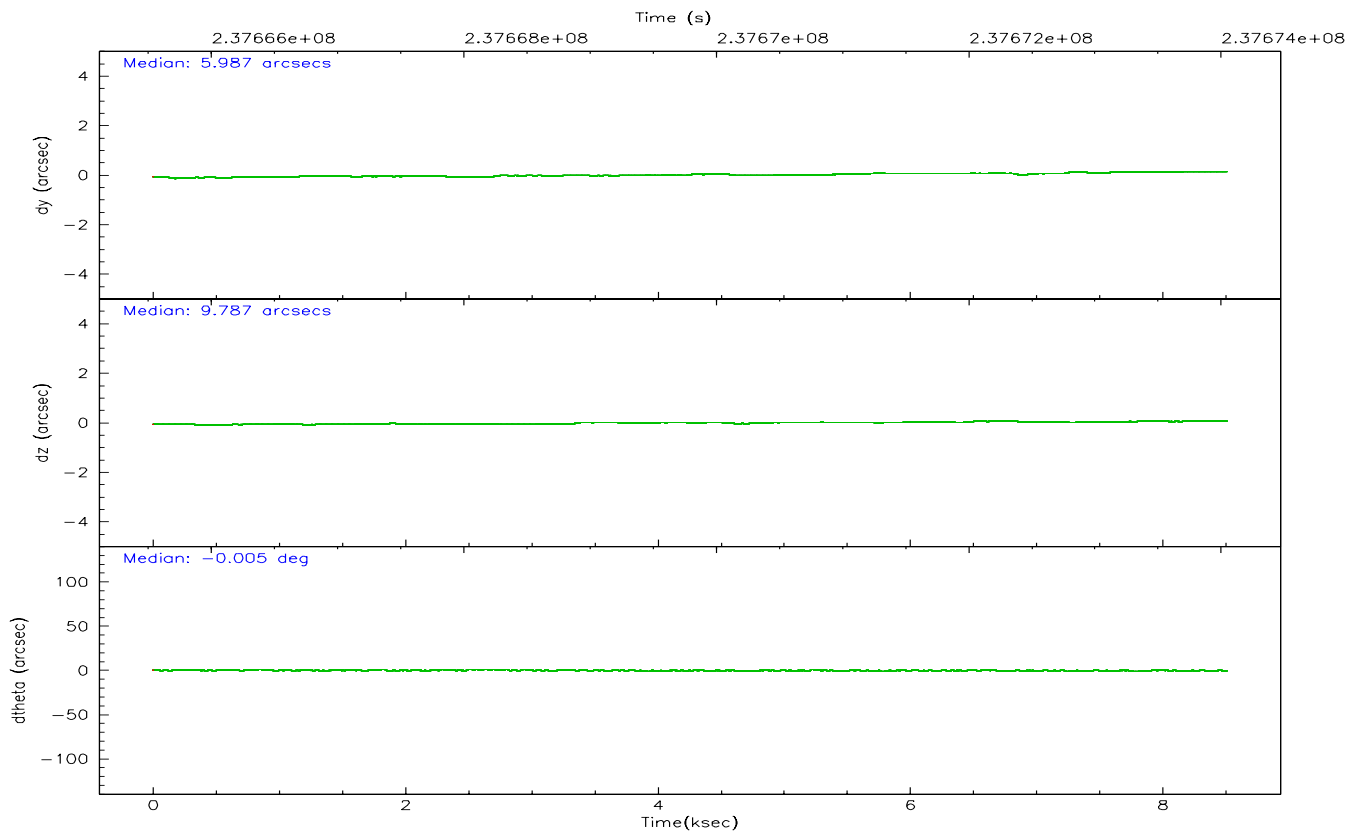
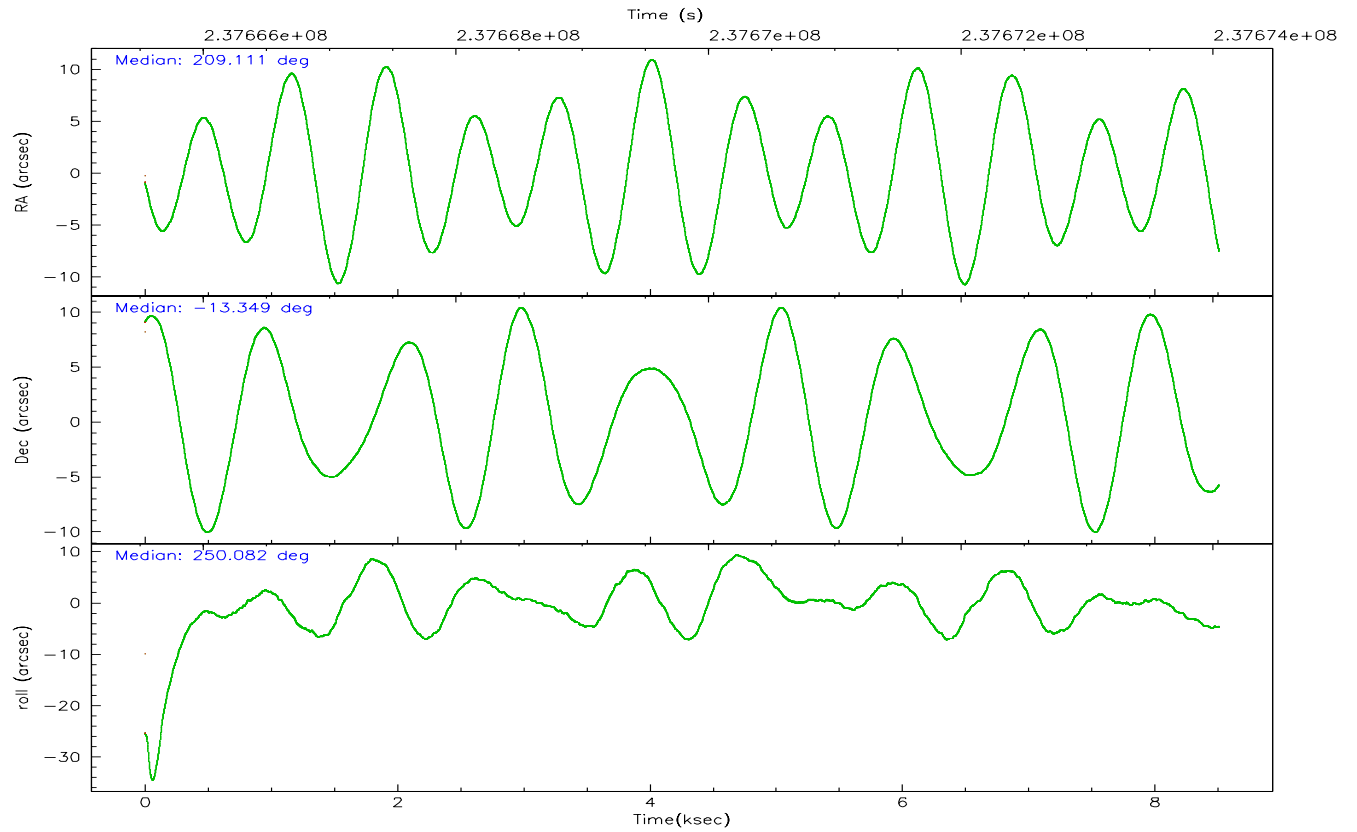
	ccd 2	ccd 3	ccd 5	ccd 6	ccd 7	ccd 8
grade 0 events	734	585	2184	794	1101	3226
	1%	1%	26%	2%	20%	7%
grade 1 events	4	6	57	7	20	29
	0%	0%	0%	0%	0%	0%
grade 2 events	430	137	2164	332	1352	2528
	1%	0%	26%	0%	25%	5%
grade 3 events	263	213	616	200	626	1276
	0%	0%	7%	0%	11%	2%
grade 4 events	256	185	596	203	593	1156
	0%	0%	7%	0%	11%	2%
grade 5 events	67	26	299	30	119	247
	0%	0%	3%	0%	2%	0%
grade 6 events	195	129	678	118	647	3086
	0%	0%	8%	0%	12%	7%
grade 7 events	37822	33444	1555	35255	837	31757
	95%	96%	19%	95%	15%	73%

## 2.2 Compared Parameters

Parameter	Planned	Actual	Parameter	Planned	Actual
Instrument	ACIS	ACIS	Obspar format version number	6	6
Detector	ACIS-235678	ACIS-235678	Obspar file type	PREDICTED	ACTUAL
Grating	NONE	NONE	Obspar update status	NONE	UPDATED
Data mode	VFAINT	VFAINT	On-chip summing requested	N	N
Observation mode	POINTING	POINTING	Subarray requested	NONE	NONE
Pointing RA	209.105339	209.110627319342	Alternating exposures requested	N	N
Pointing Dec	-13.322399	-13.3491335207302	Primary exposure time	0.000000	3.2
Pointing Roll	249.921606	250.0794683668929			
Window start time	237708064.184000	237708064.184000			
Window stop time	237751264.184000	237751264.184000			
SIM focus pos (mm)	-0.684267	-0.6828225247311905			
SIM defocus (mm)	0	0.001444936568705701			
SIM translation stage pos (mm)	-190.132523	-190.1400660498719			
SIM translation stage offset (mm)	0	0.00754346686406393			
Observation start time	237665720.184000	237665343.78487			
Observation start date	2005-07-13T18:14:16	2005-07-13T18:09:03			
Observation end time	237674045.184000	237674179.28528			
Observation end date	2005-07-13T20:33:01	2005-07-13T20:36:19			
Read mode	TIMED	TIMED			

## 2.3 Aspect





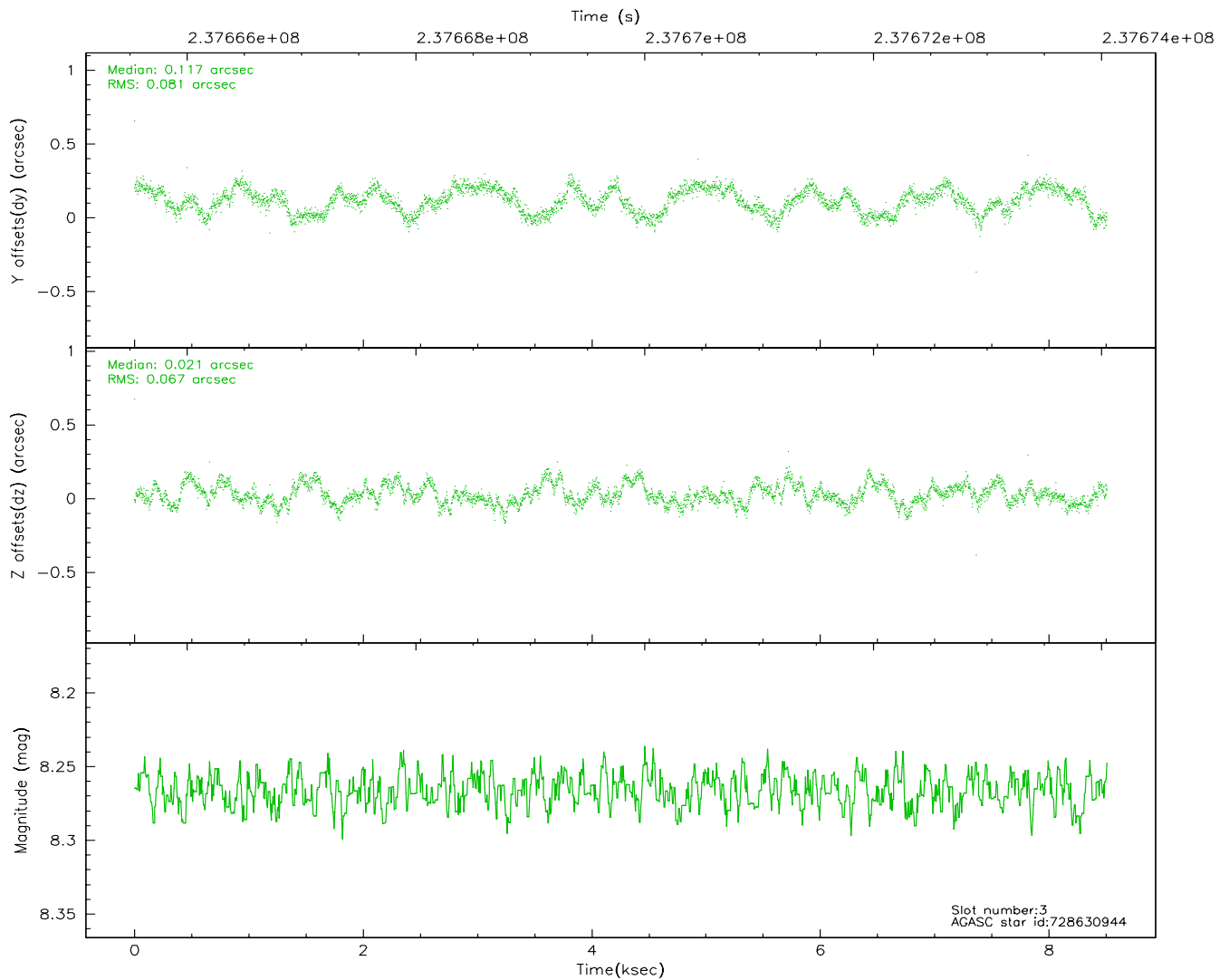
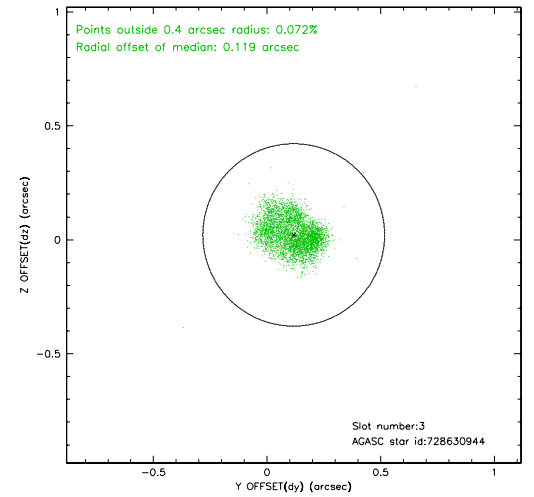
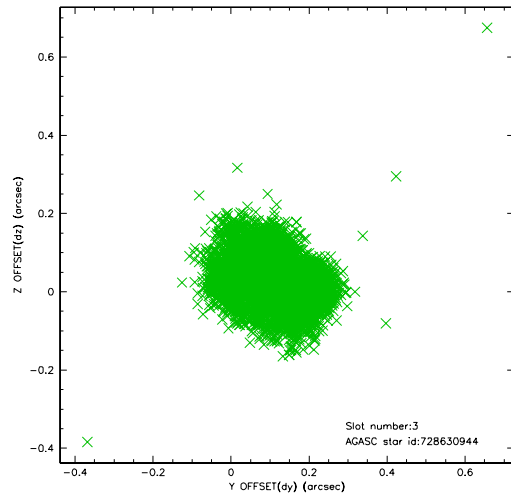
### Slot Statistics

slot	status	id	mag	n_pts	med_dy	med_dz	dr1	dr2	ra	dec	mean_y	mean_z
0	FID	ACIS-S-2	7.10	2076	-0.056	-0.009	0.007	0.011	0.000000	0.000000	-758.75	-1731.04
1	FID	ACIS-S-4	7.21	2076	0.064	0.029	0.005	0.010	0.000000	0.000000	2154.32	176.85
2	FID	ACIS-S-5	7.23	2076	-0.040	-0.012	0.006	0.011	0.000000	0.000000	-1810.77	171.17
3	GUIDE	728630944	8.27	4152	0.117	0.021	0.114	0.167	208.923207	-13.740319	1632.46	-81.29
4	GUIDE	728631464	11.03	4145	-0.018	-0.029	0.363	0.536	208.876674	-12.686242	-1874.39	-1540.18
5	GUIDE	728638600	9.40	4149	-0.041	-0.209	0.123	0.201	209.320543	-13.467304	231.42	886.43
6	GUIDE	728639032	9.16	4148	0.165	0.139	0.106	0.168	209.196450	-13.877558	1768.56	985.70
7	GUIDE	728639792	9.86	4146	-0.236	0.079	0.123	0.202	209.293230	-12.690895	-2361.07	-160.04

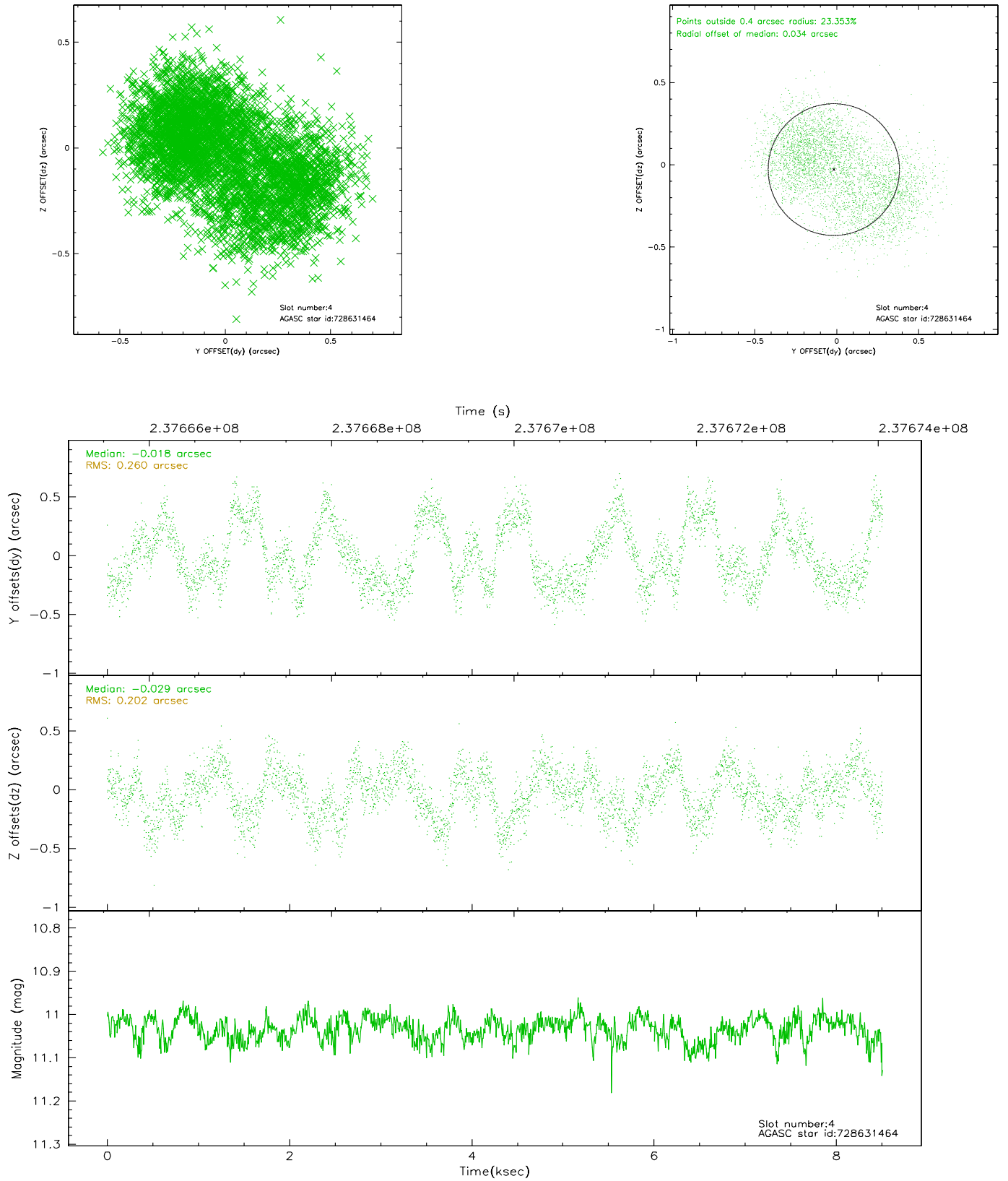


## 2.4 Star Slots

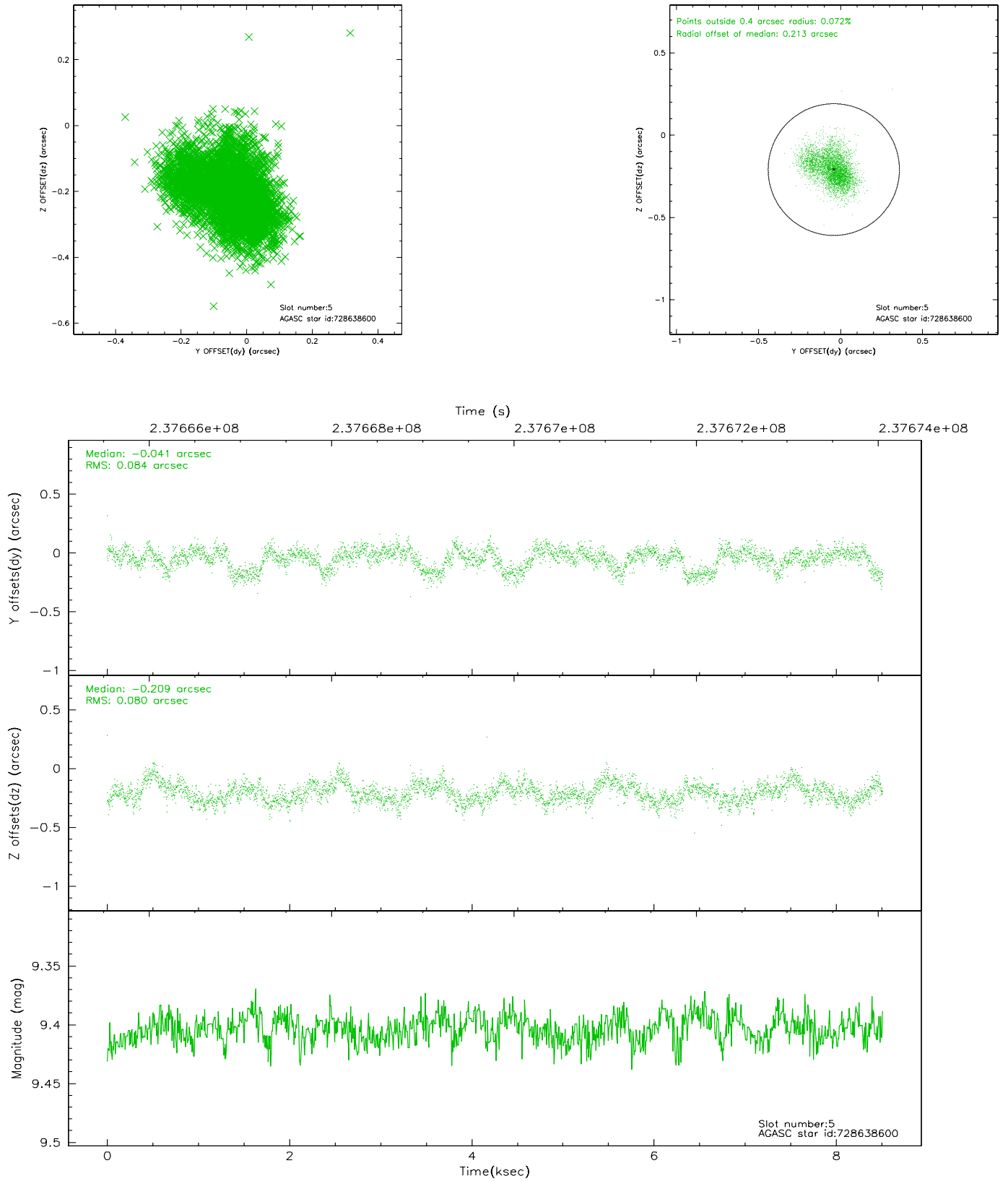
### 2.4.1 Slot 3



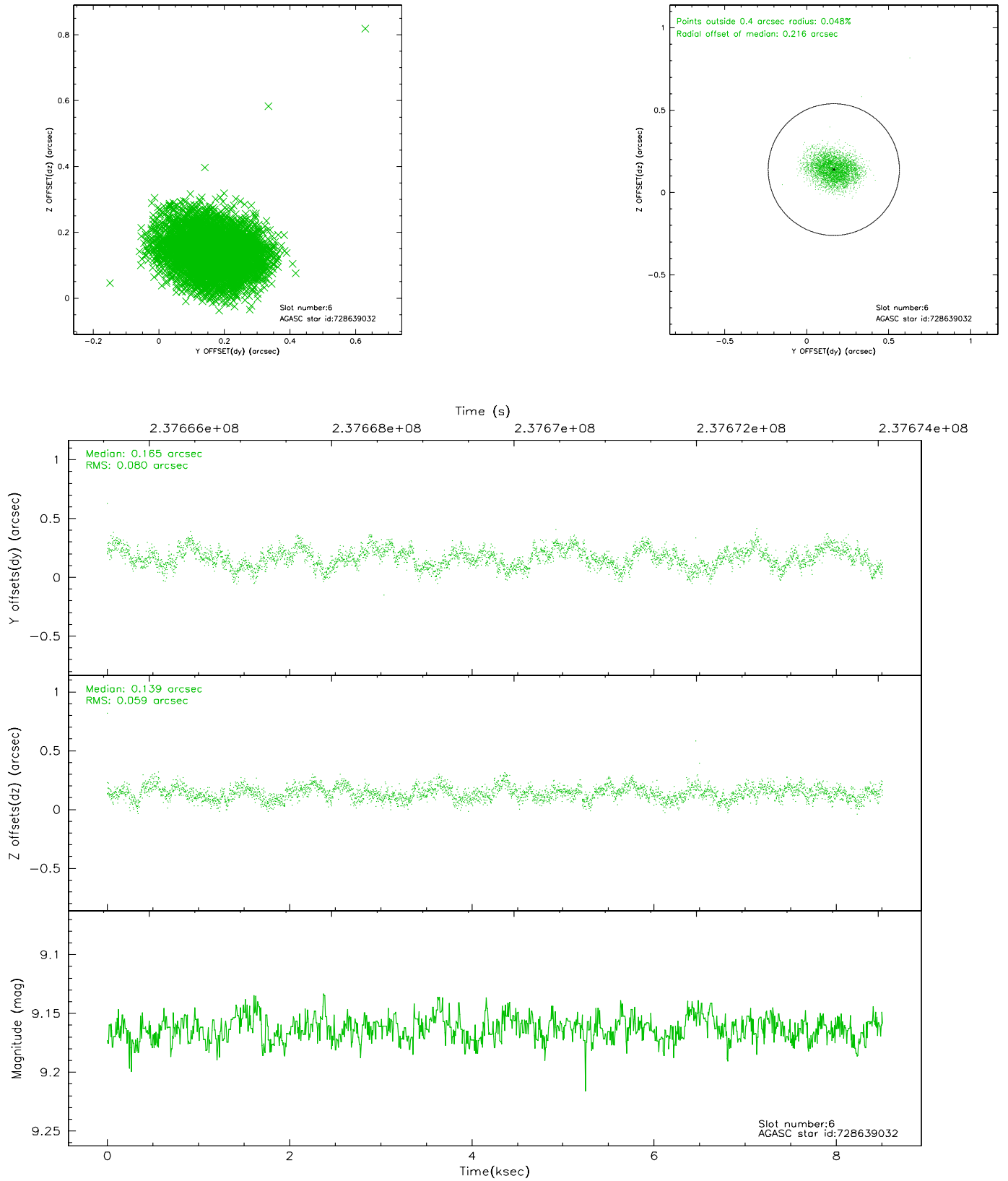
## 2.4.2 Slot 4



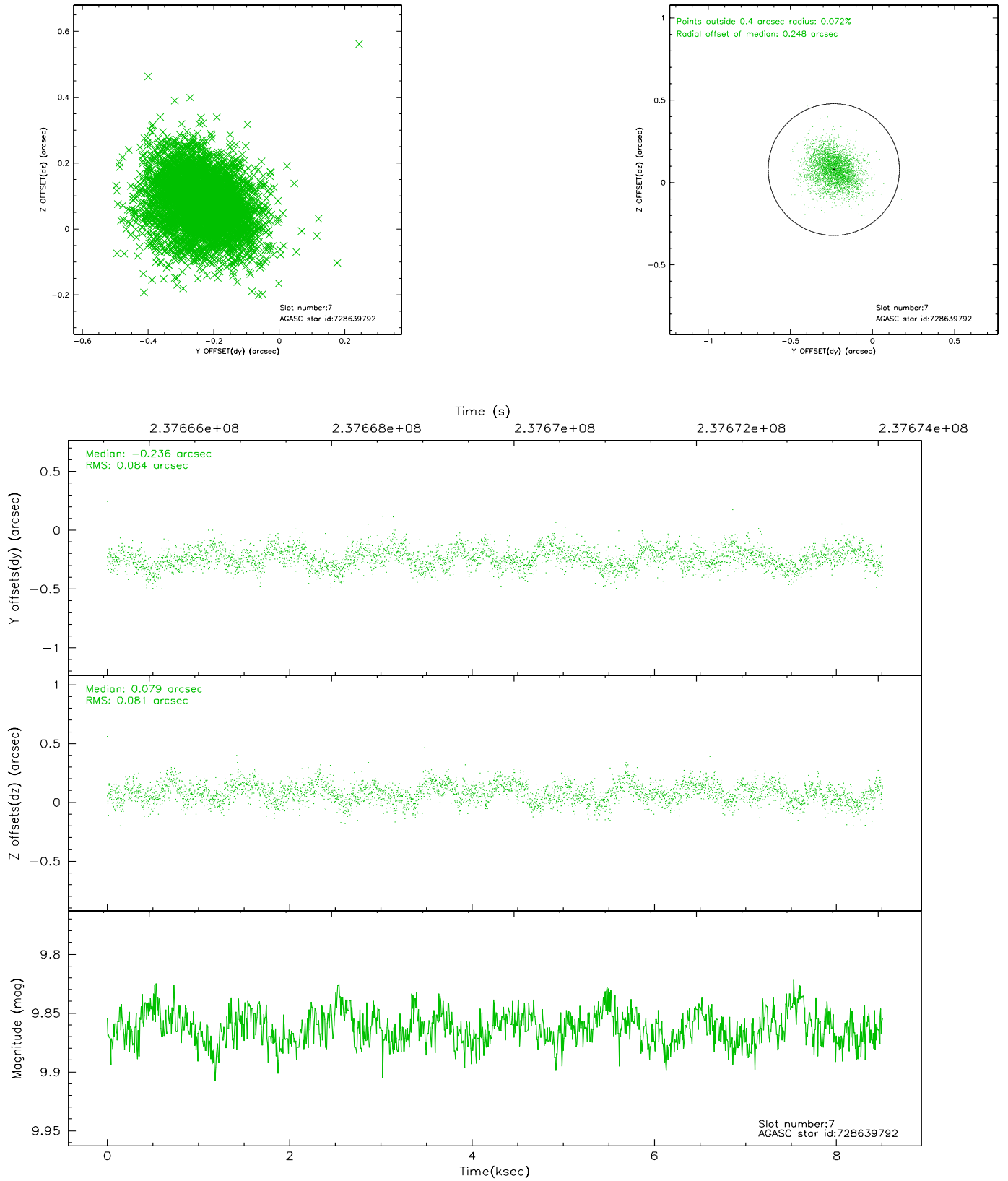
### 2.4.3 Slot 5



## 2.4.4 Slot 6

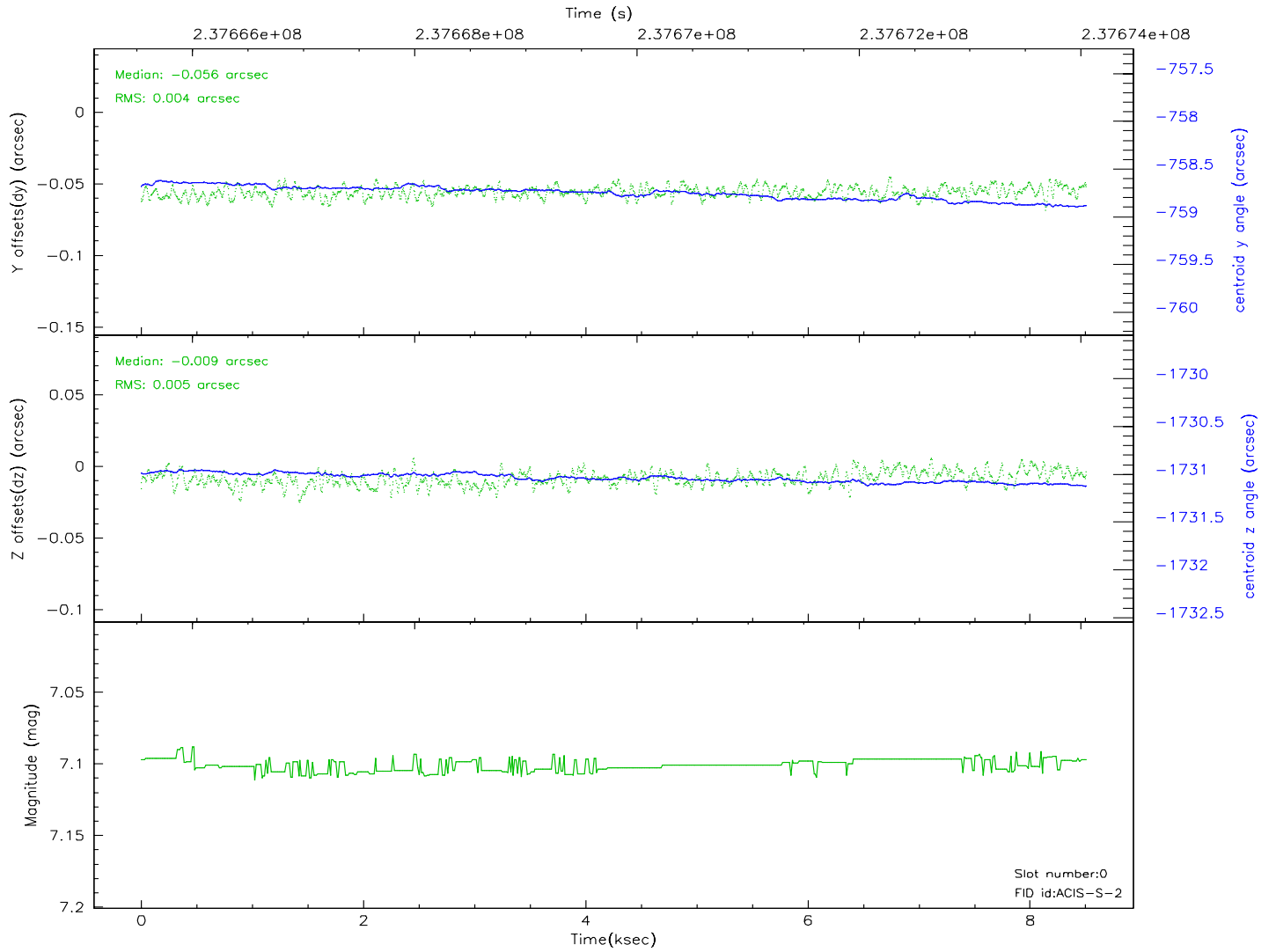
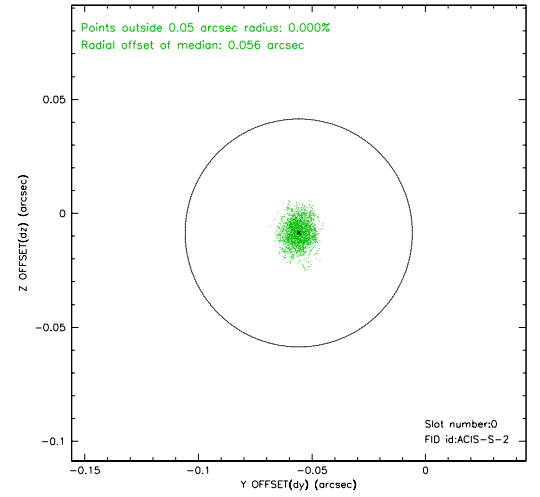
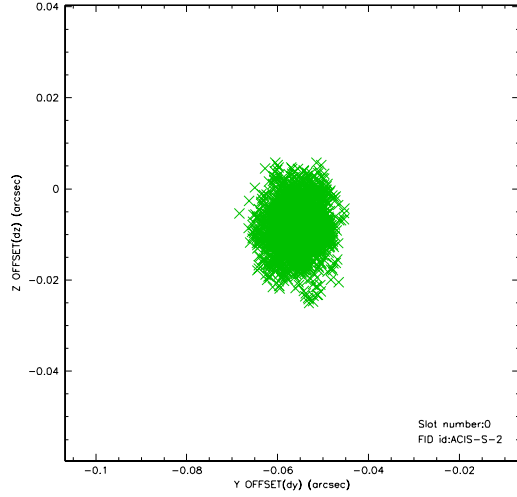


## 2.4.5 Slot 7

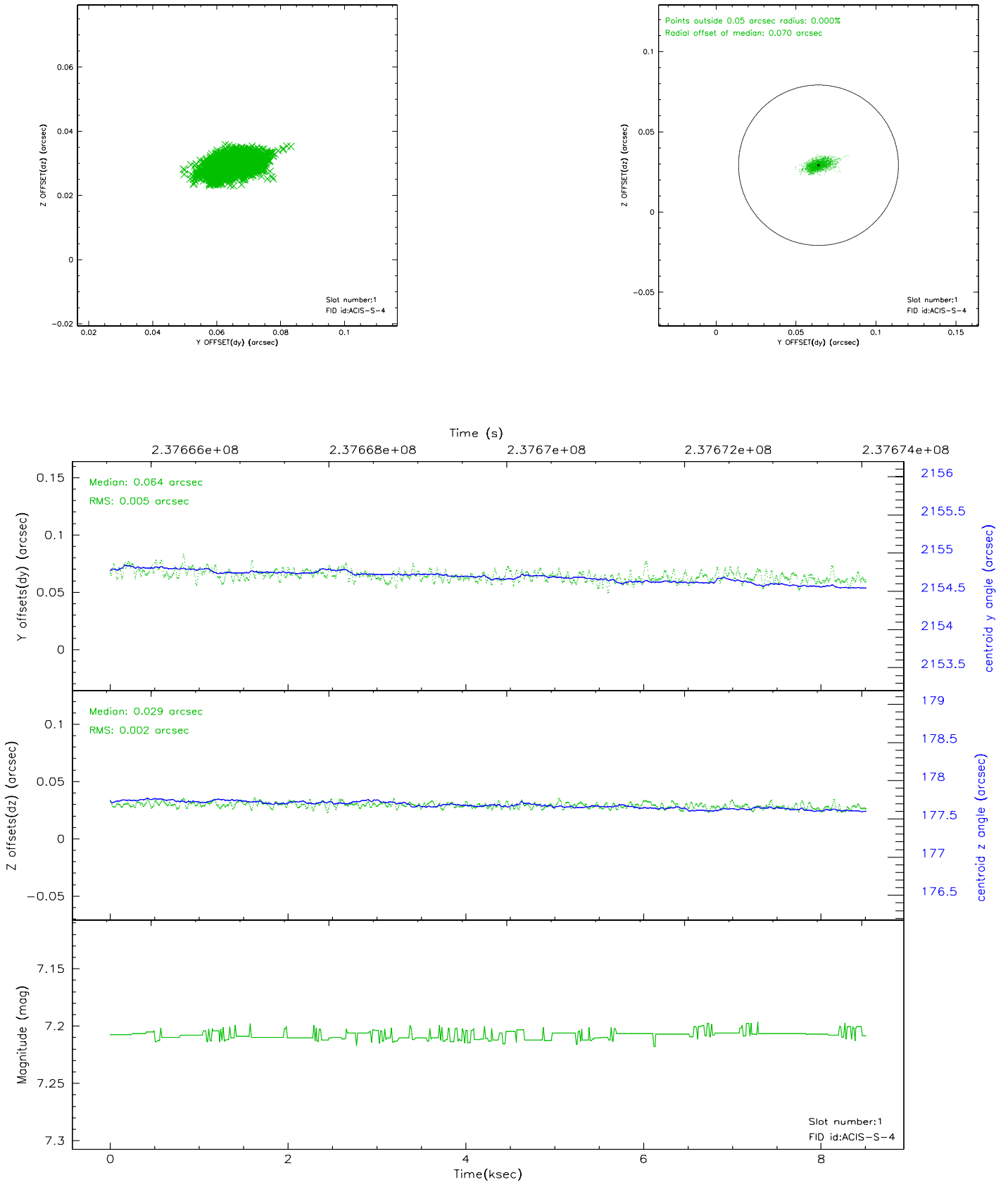


## 2.5 FID Slots

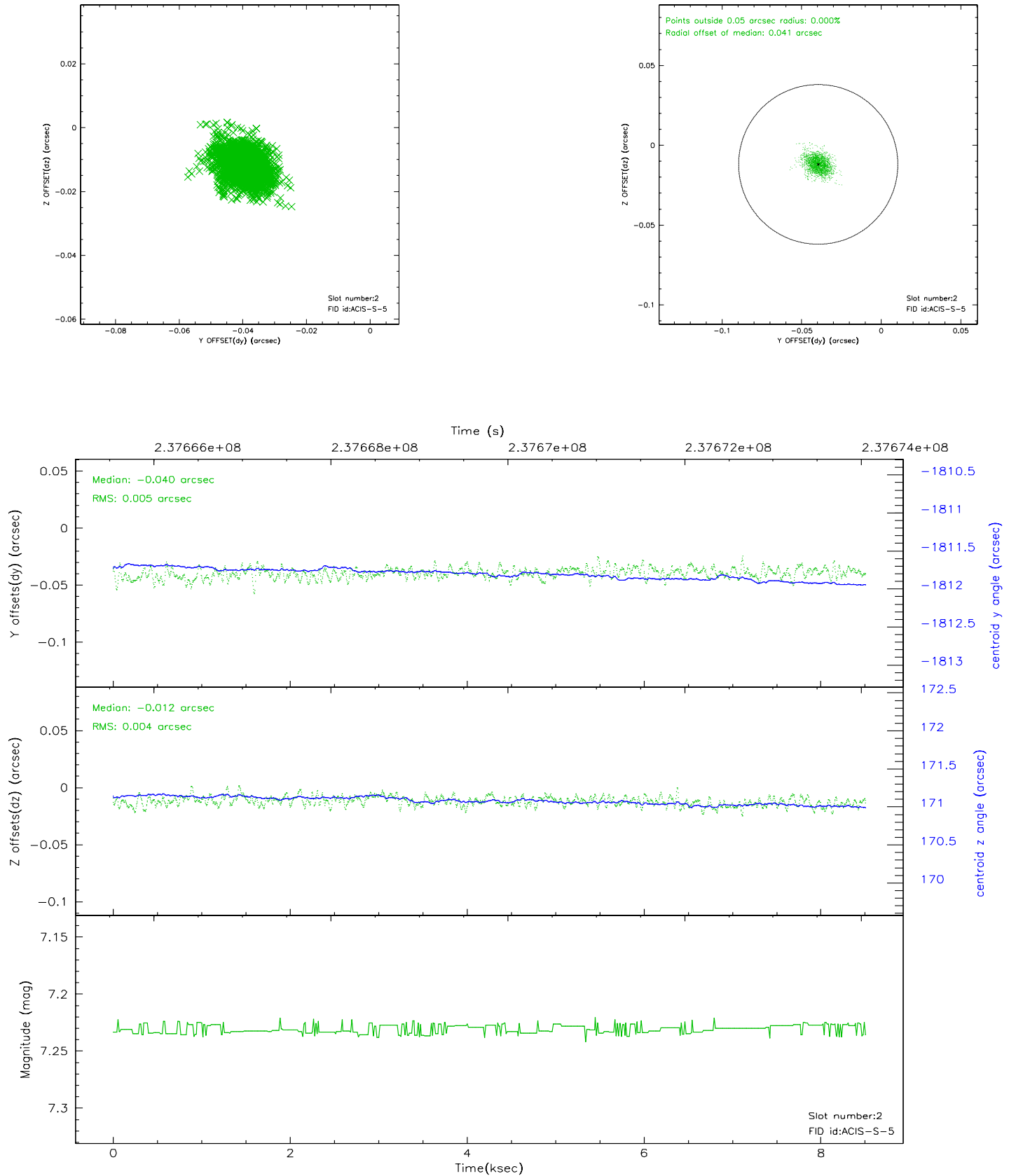
### 2.5.1 Slot 0



## 2.5.2 Slot 1



### 2.5.3 Slot 2





### 3 Point Sources

12.16 arcmin



# A Summary

## A.1 Status

V&V Scientist	Jen Lauer
V&V Date (YYYY-MM-DD)	2006.03.14
V&V Edition	1
V&V Disposition and Status	OK
V&V Charge Time	8.508799

## A.2 Comments

Comments for Obi 1

Star in slot 4 has an RMS deviation > 0.200000 arcsec

Within aspect spec.

Window constraint not met (but this is OK per the 'additional remarks' supplied on the obscat data page.)

ACIS focal plane temperature is above the calibration limits for the length of the observation.