

V&V Reference Report

L2 ASCDS Version : 8.5.1.1

Observation 6251 - L2 Version 4
Chandra X-Ray Center

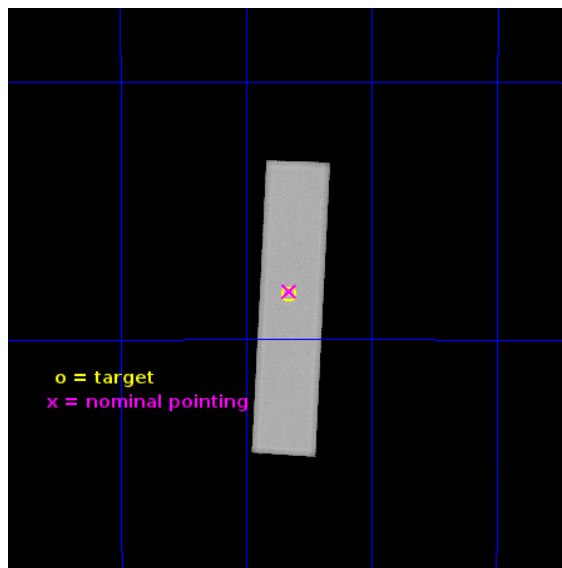
L2 Processing Date : Jun 29 2013

Contents

1	Front	2
2	OBI	3
2.1	OBI	3
2.1.1	Images	3
2.1.2	Parameters	4
2.1.3	Events	4
2.2	Compared Parameters	5
2.3	Aspect	6
2.4	Star Slots	9
2.4.1	Slot 3	9
2.4.2	Slot 4	10
2.4.3	Slot 5	11
2.4.4	Slot 6	12
2.4.5	Slot 7	13
2.5	FID Slots	14
2.5.1	Slot 0	14
2.5.2	Slot 1	15
2.5.3	Slot 2	16
A	Summary	17
A.1	Status	17
A.2	Comments	17

1 Front

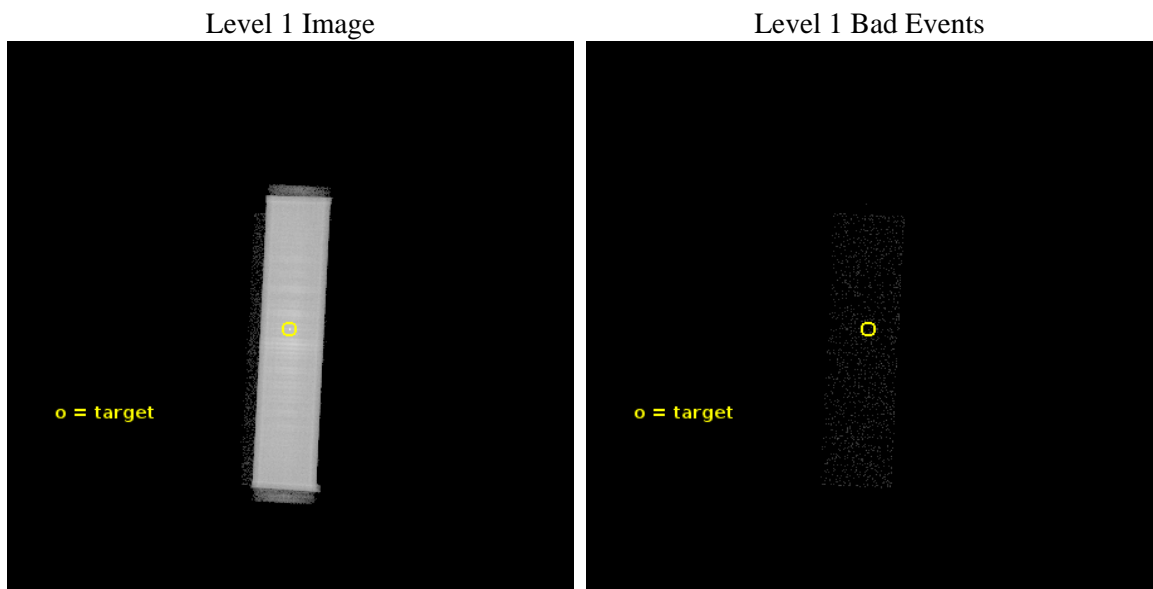
seq_num	500599	Sequence number
obs_id	6251	Observation id
title	Resolving an X-ray Jet from the Magnetar SGR 1806-20	Proposal titl
observer	Dr. CHRYSSA KOUVELIOTOU	Principal investigator
object	SGR 1806-20	Source name
ra_targ	272.16375	Observer's specified target RA [deg]
dec_targ	-20.411056	Observer's specified target Dec [deg]
ra_nom	272.16367064264	Nominal RA [deg]
dec_nom	-20.406377243137	Nominal Dec [deg]
roll_nom	92.67553029787	Nominal Roll [deg]
revision	4	Processing version of data
ontime	27149.176234901	[s]
livetime	27046.948243912	Ontime multiplied by DTCOR
l2events	1013681	Number of level 2 events



2 OBI

2.1 OBI

2.1.1 Images



2.1.2 Parameters

obi_num	1	Obi number	sched_exp_time	27000.000000	[s] Scheduled observation exposure time
ascdsver	10	Processing system revision	ontime	27149.176234901	[s]
caldsver	4.5.7	 	l1events	1605557	Number of level 1 events
date	2013-06-29T03:20:53	Date and time of file creation			
revision	4	Processing version of data			

2.1.3 Events

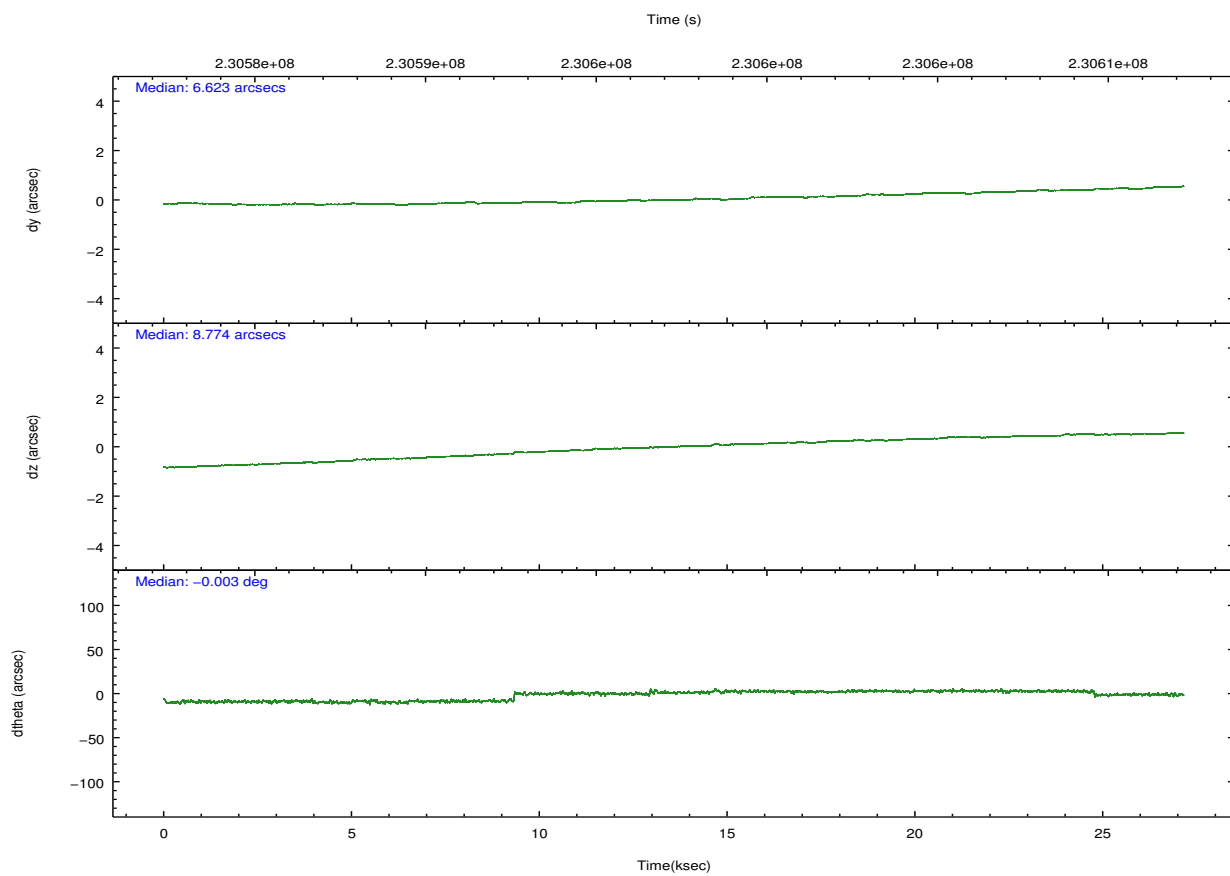
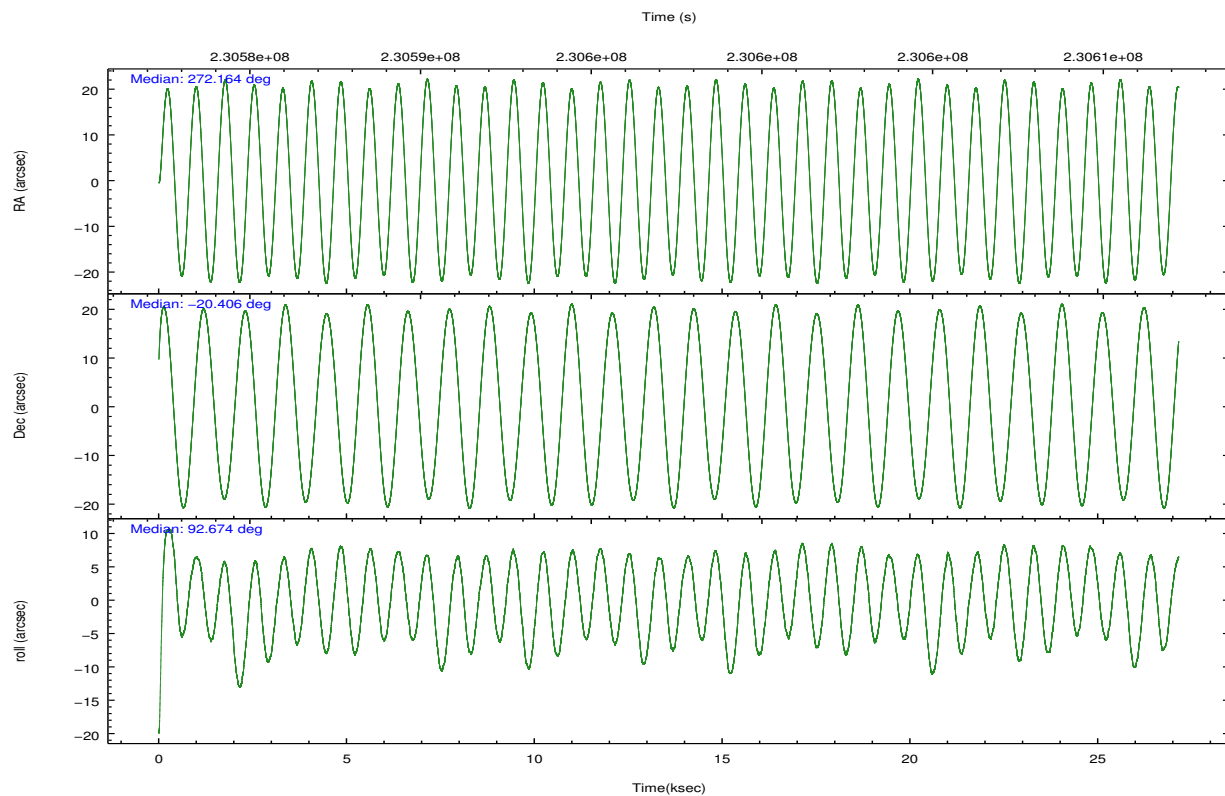
Level 1 Events

	segment 1	segment 2	segment 3
level 1 events	2150	16034043	
rejected events	160	113289	0
rejected %	7%	7%	0%

2.2 Compared Parameters

Parameter	Planned	Actual	Parameter	Planned	Actual
Instrument	HRC	HRC	Obspar format version number	7	7
Detector	HRC-S	HRC-S	Obspar file type	PREDICTED	ACTUAL
Grating	NONE	NONE	Obspar update status	NONE	UPDATED
Data mode	OBSERVING	OBSERVING			
Observation mode	POINTING	POINTING			
[deg] Pointing RA	272.181383	272.1636706426403			
[deg] Pointing Dec	-20.429658	-20.40637724313736			
[deg] Pointing Roll	92.614380	92.67553029787048			
[mm] SIM focus pos	-1.429586	-1.428180813131781			
[mm] SIM defocus	0.1037507710433287	0.1051558262725154			
[mm] SIM translation stage pos	250.455976	250.466033080201			
[mm] SIM translation stage offset	0	-0.01005468664627074			
[s] Observation start time (MET)	230583852.184000	230581771.92425			
Observation start date	2005-04-22T19:03:08	2005-04-22T18:29:31			
[s] Observation end time (MET)	230610852.184000	230611567.13811			
Observation end date	2005-04-23T02:33:08	2005-04-23T02:46:07			

2.3 Aspect

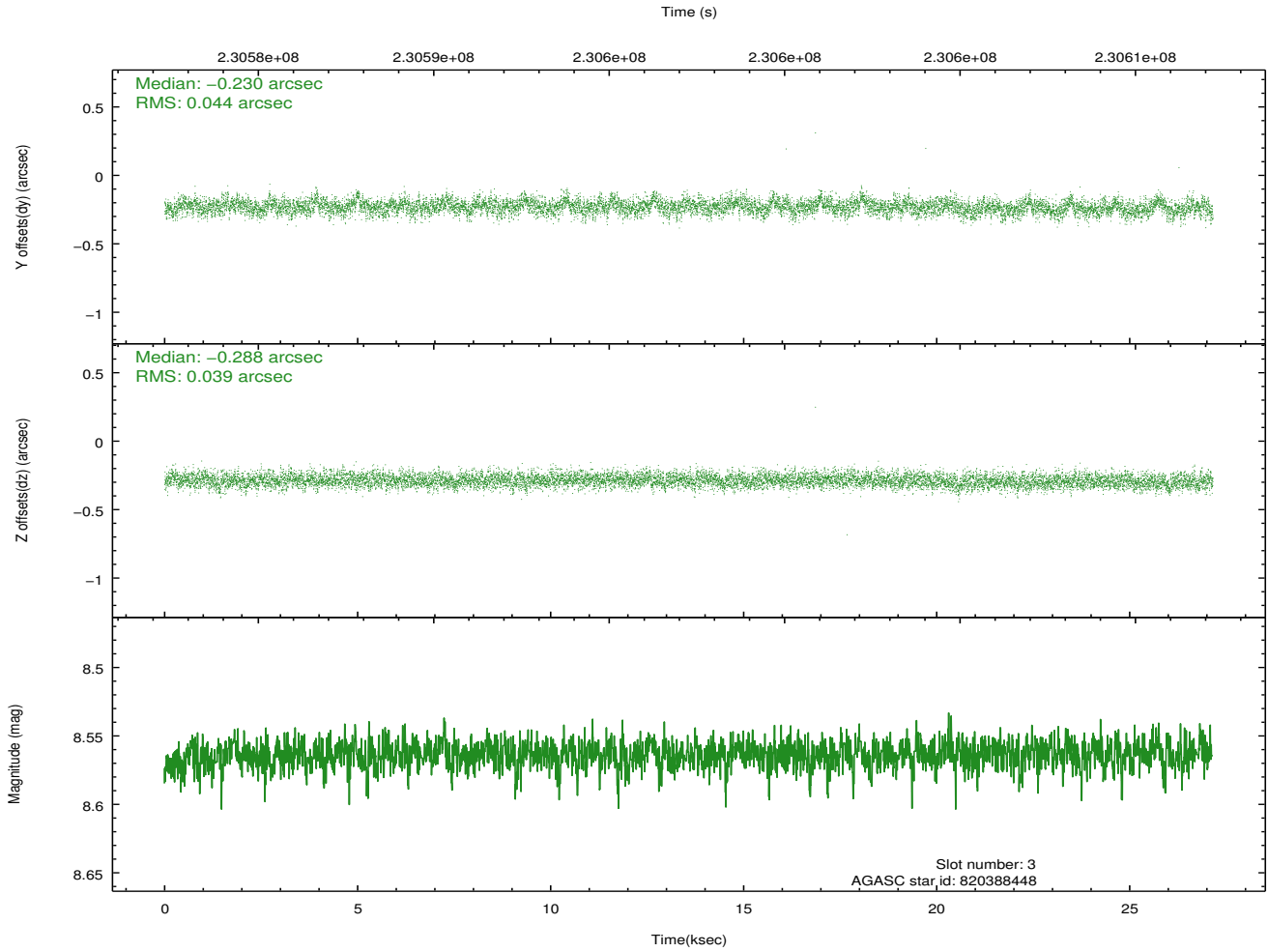
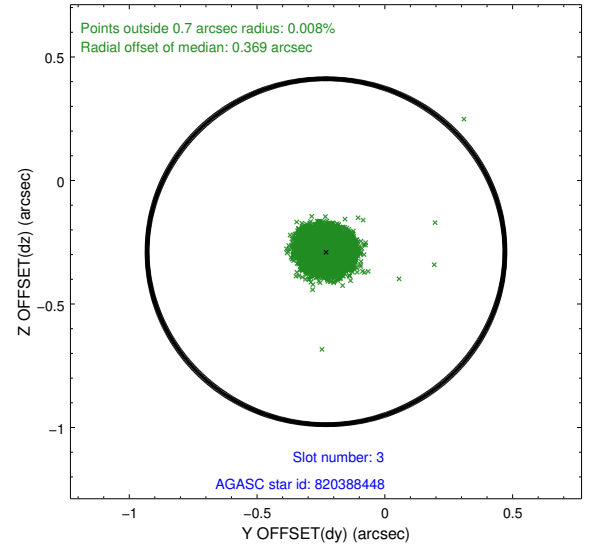
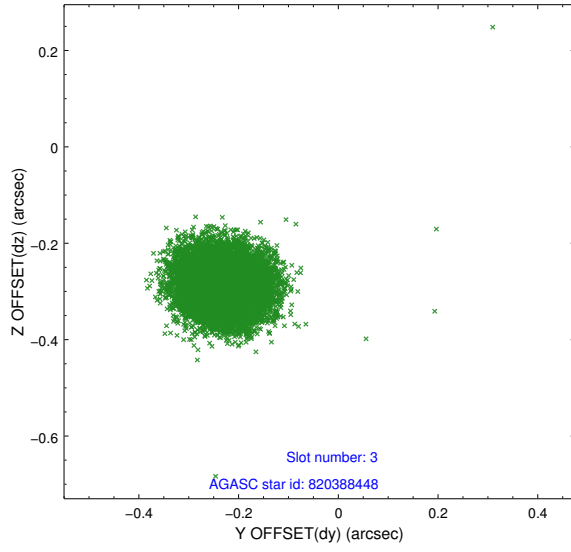


Slot Statistics

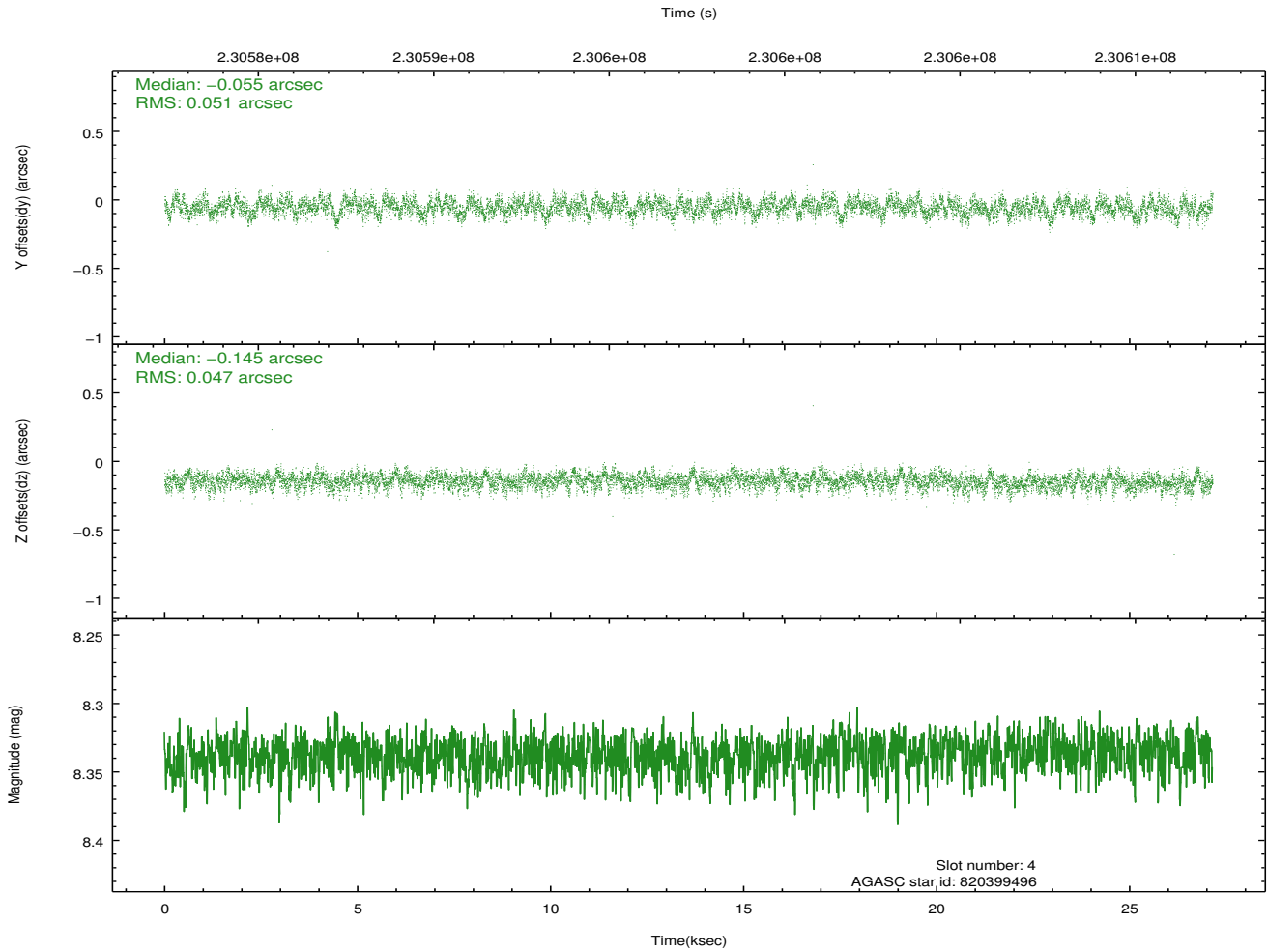
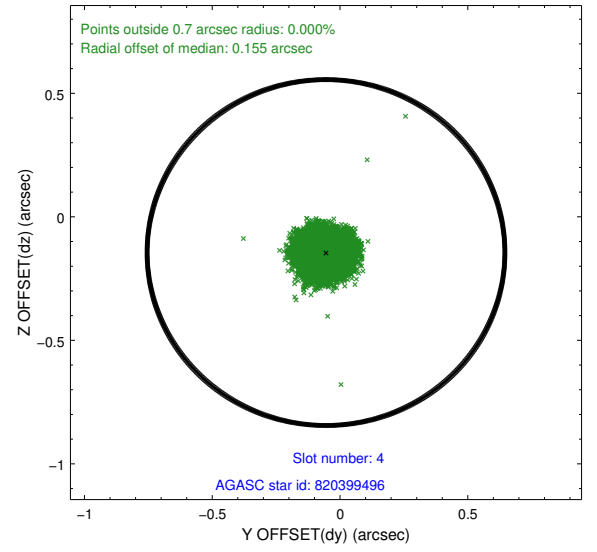
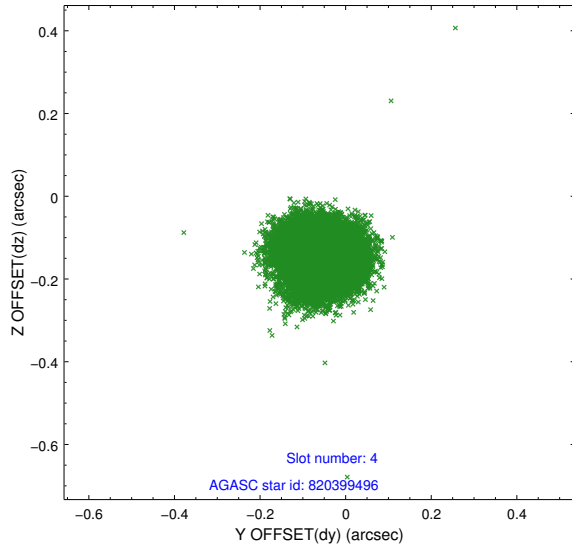
slot	status	id	mag	n_pts	med_dy	med_dz	dr1	dr2	ra	dec	mean_y	mean_z
0	FID	HRC-S-1	7.00	6622	0.098	-0.161	0.025	0.039	0.000000	0.000000	-1160.86	-457.37
1	FID	HRC-S-3	7.02	6621	0.088	-0.049	0.037	0.056	0.000000	0.000000	-1163.76	572.20
2	FID	HRC-S-4	6.97	6620	0.197	-0.086	0.013	0.018	0.000000	0.000000	1237.32	574.90
3	GUIDE	820388448	8.56	13240	-0.230	-0.288	0.062	0.102	271.630569	-19.882892	2048.12	1773.16
4	GUIDE	820399496	8.34	13242	-0.055	-0.145	0.075	0.115	271.495152	-19.953854	1812.41	2242.08
5	GUIDE	822617304	8.98	13243	0.168	0.233	0.082	0.132	272.421826	-20.831304	-1481.52	-741.69
6	GUIDE	822098736	8.51	13241	-0.003	0.260	0.072	0.117	272.269355	-19.875225	1980.20	-388.16
7	GUIDE	822614704	7.86	13239	0.124	-0.058	0.065	0.102	272.076243	-20.843493	-1471.89	421.36

2.4 Star Slots

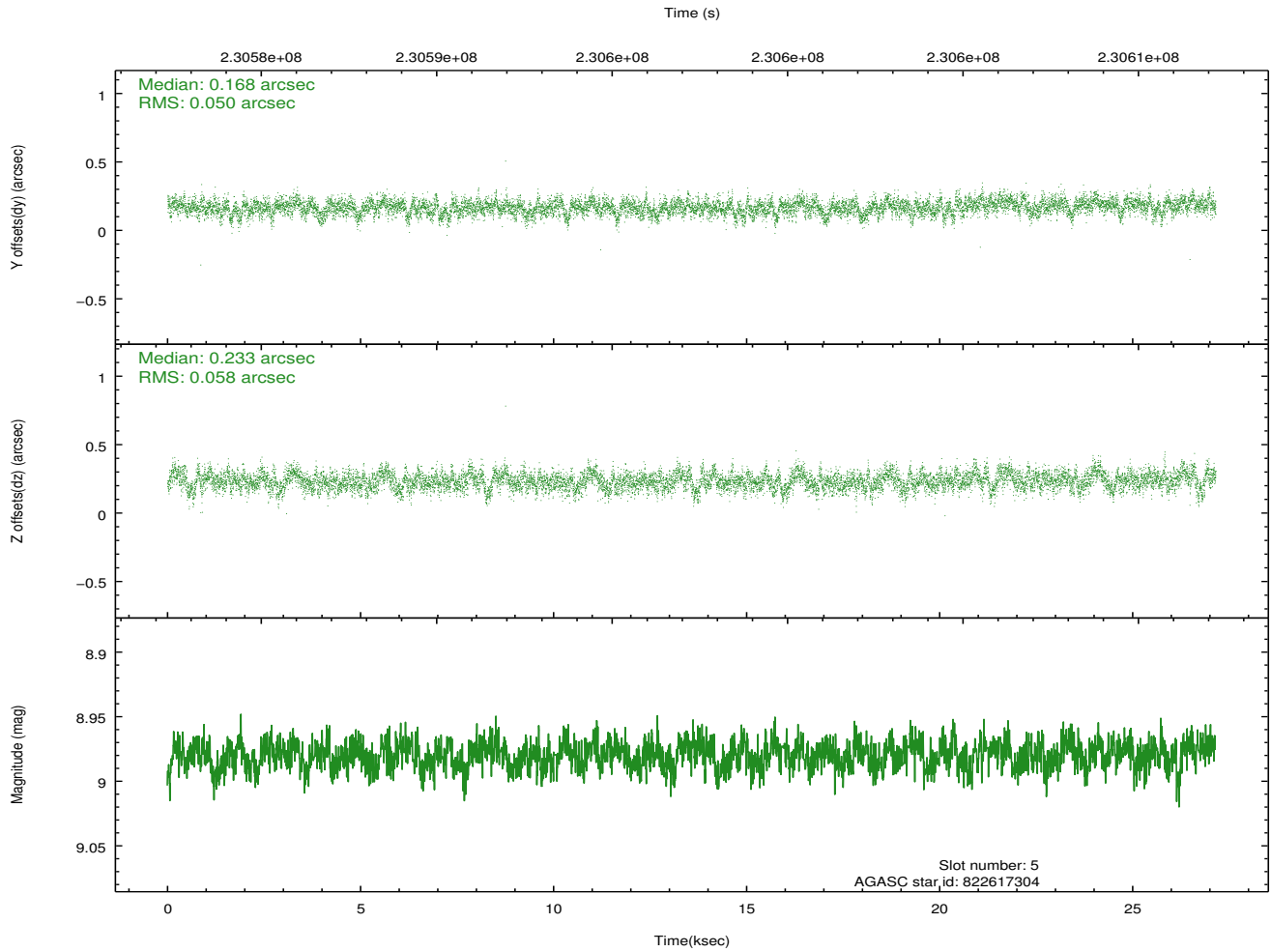
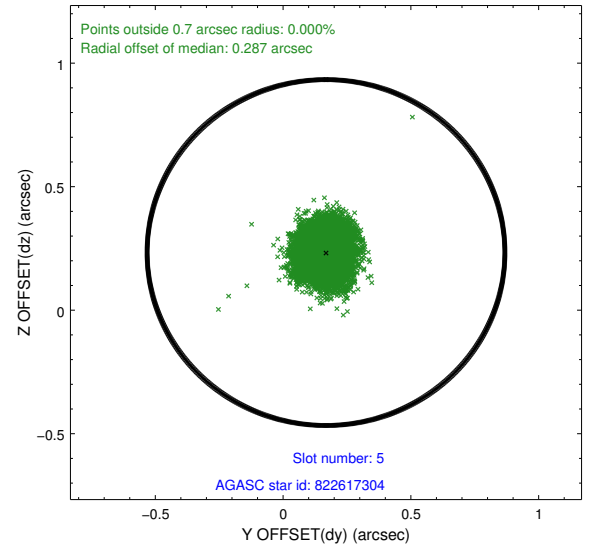
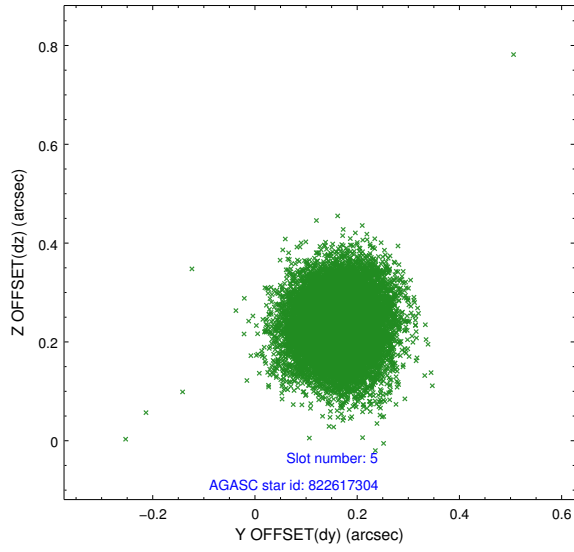
2.4.1 Slot 3



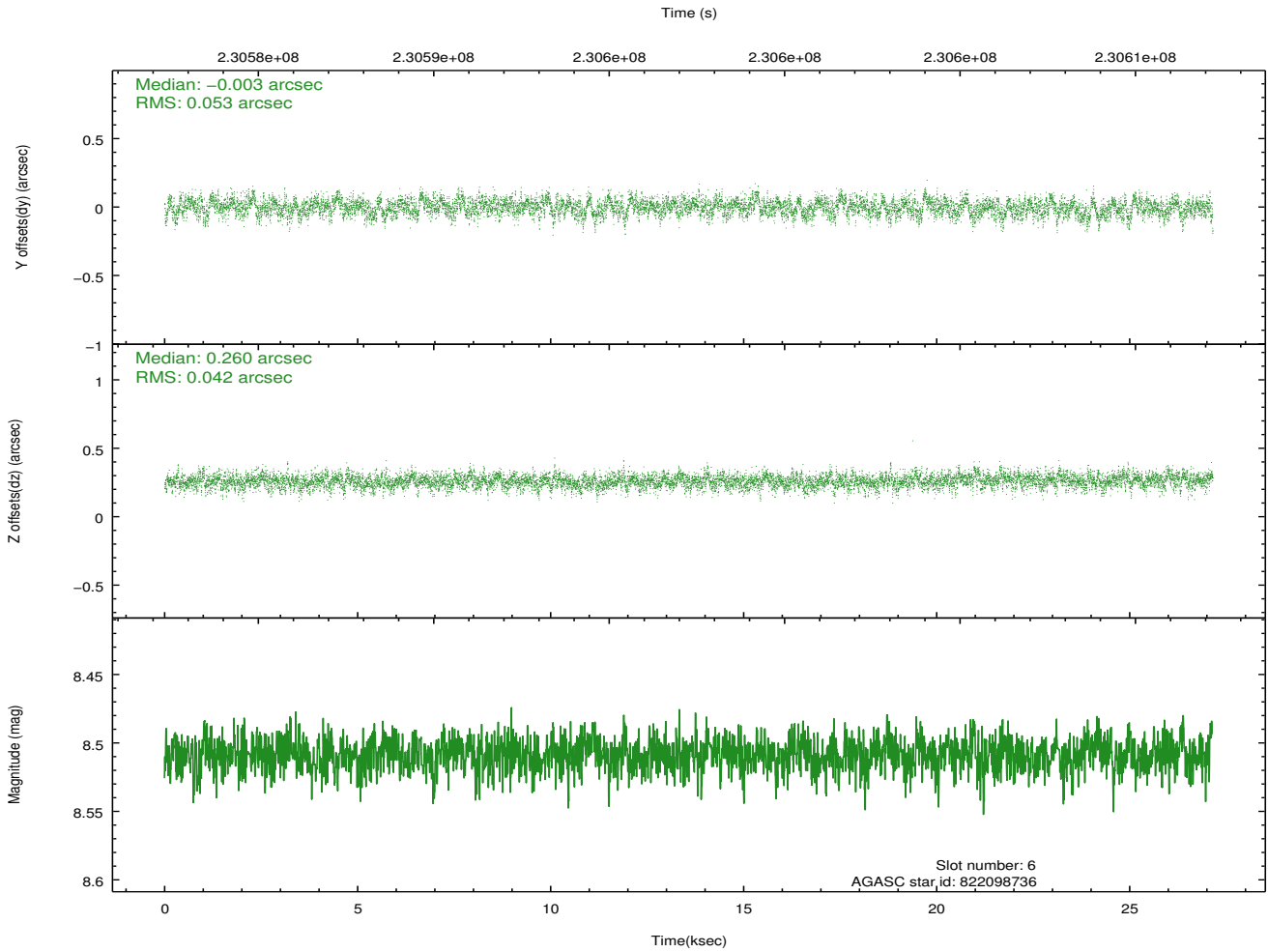
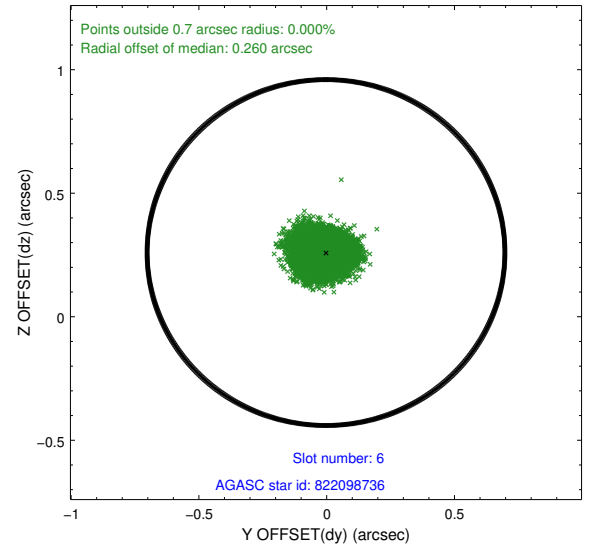
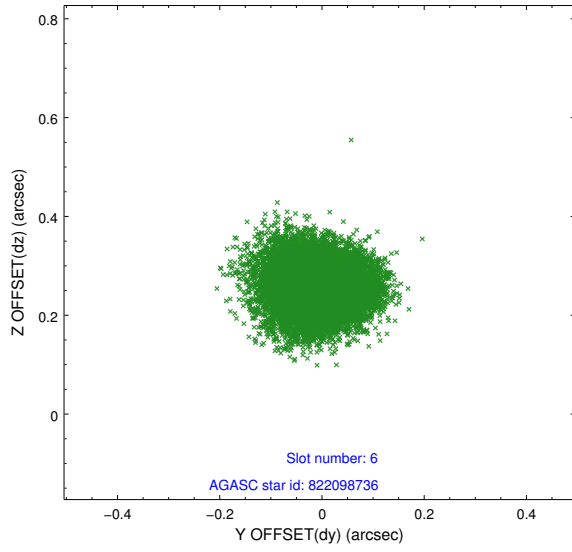
2.4.2 Slot 4



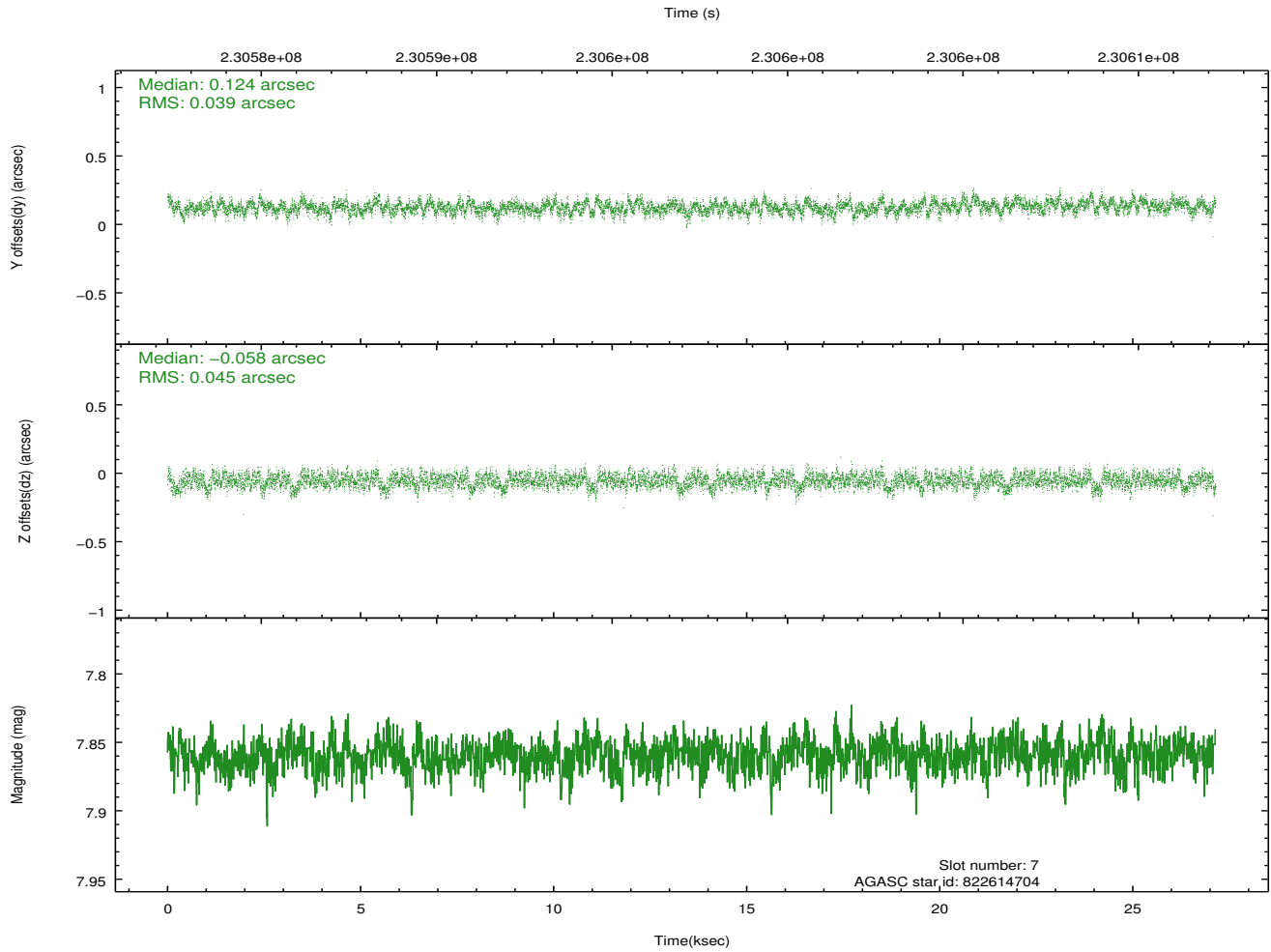
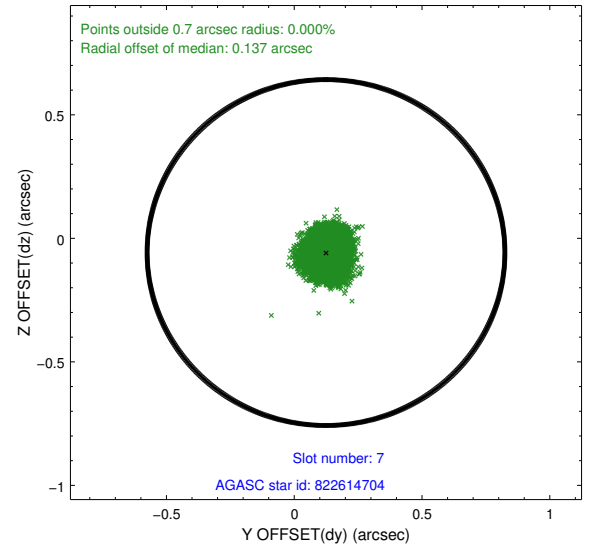
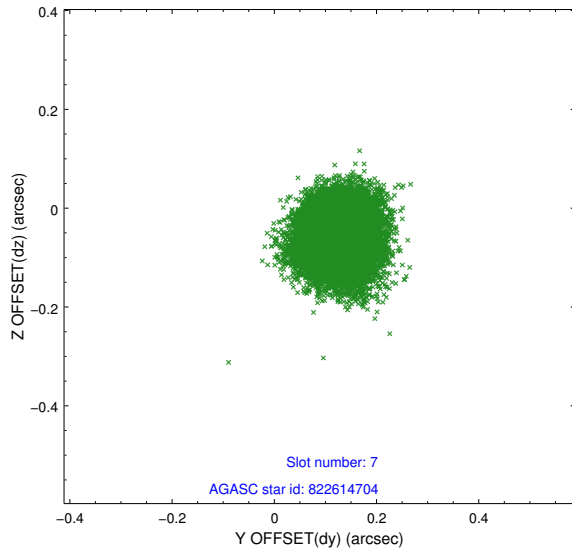
2.4.3 Slot 5



2.4.4 Slot 6

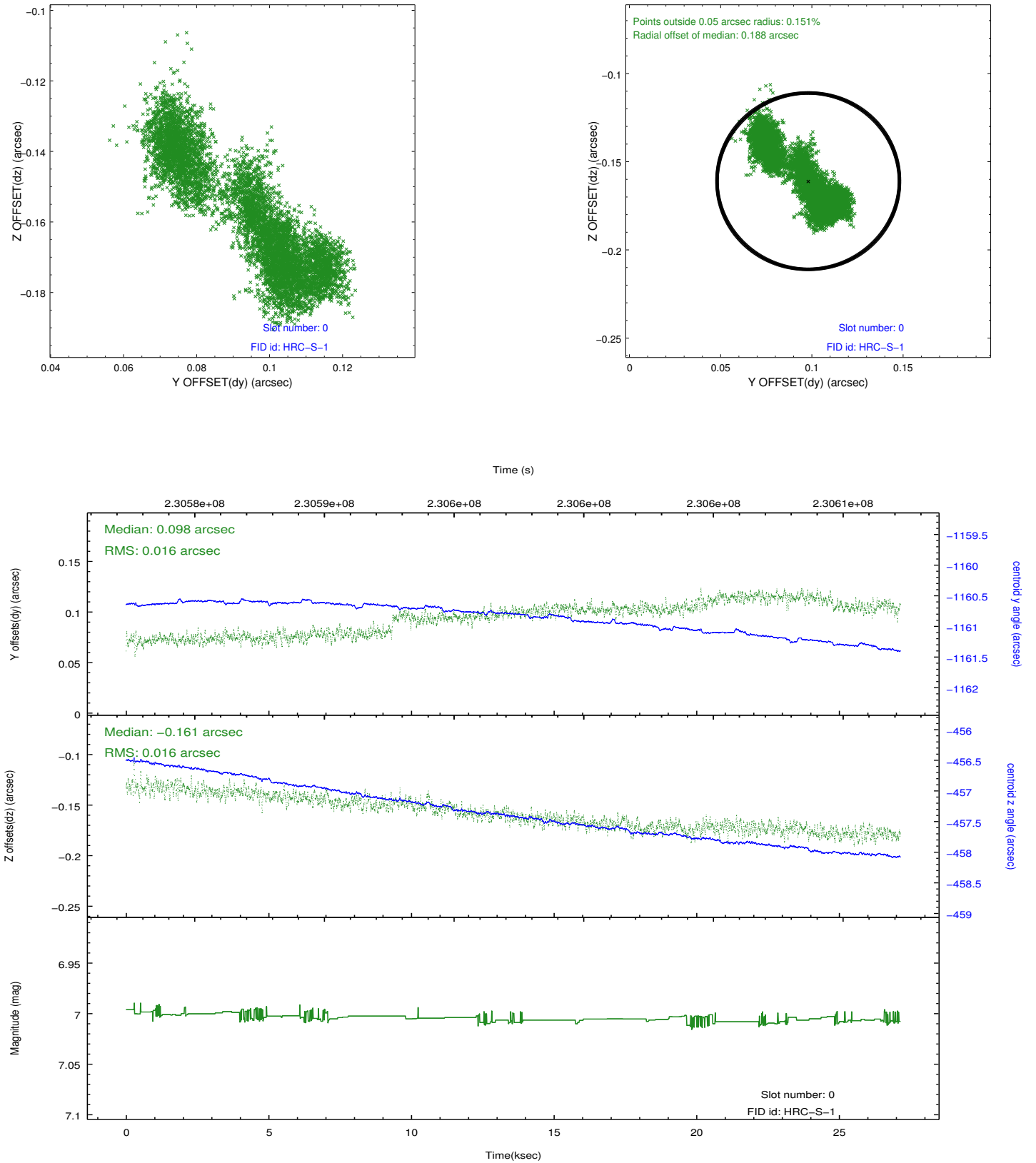


2.4.5 Slot 7

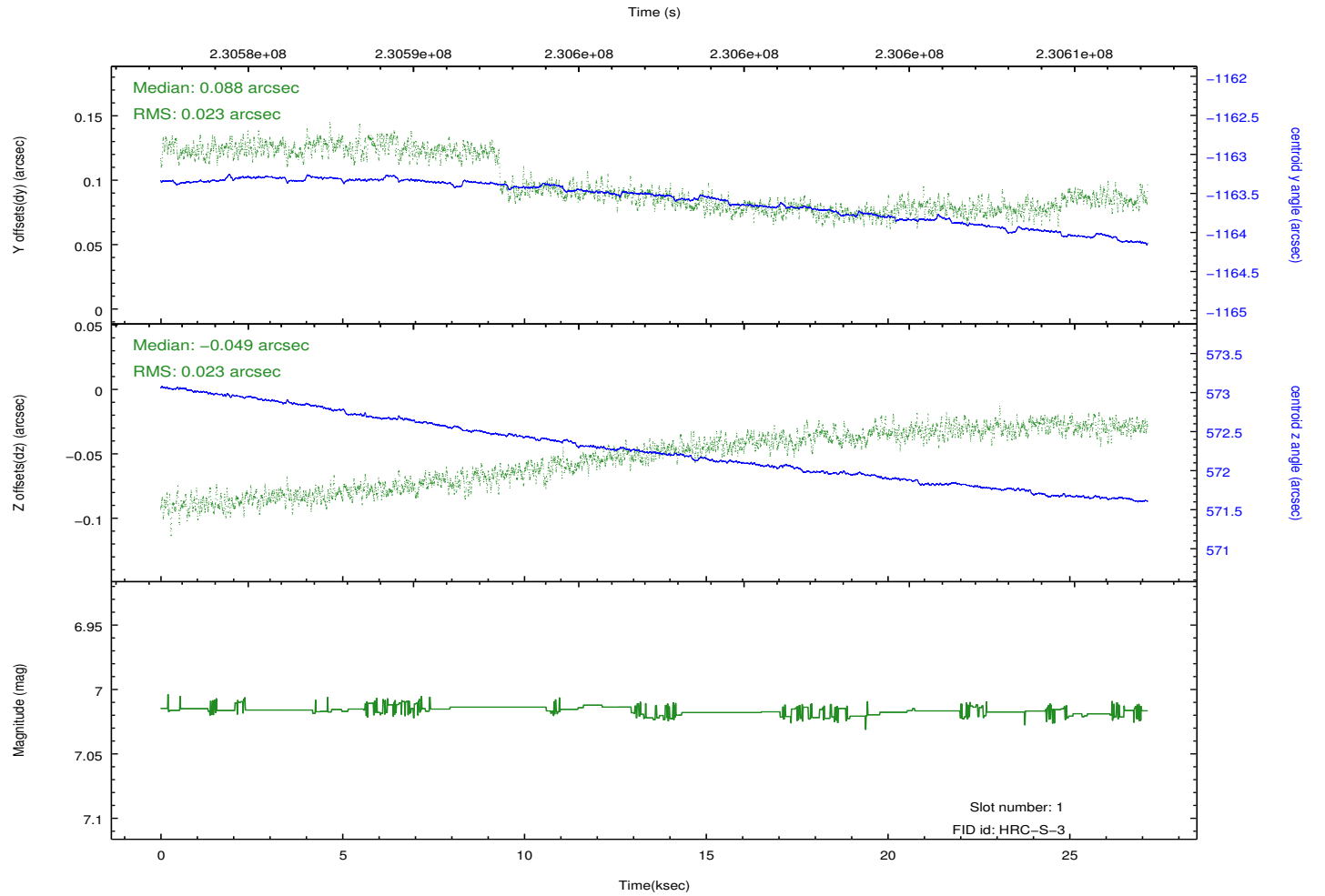
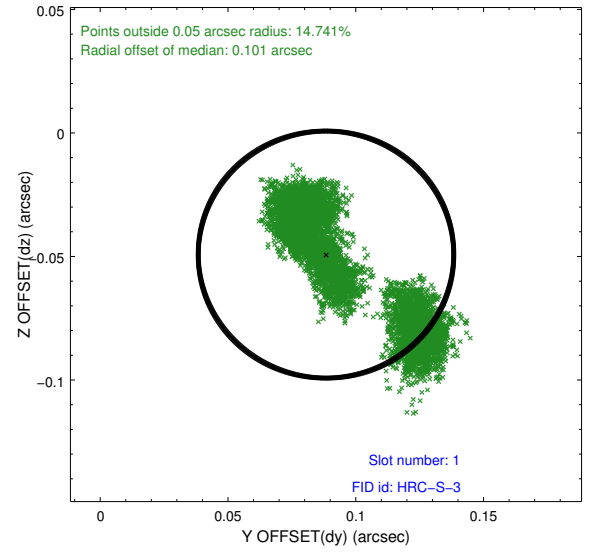
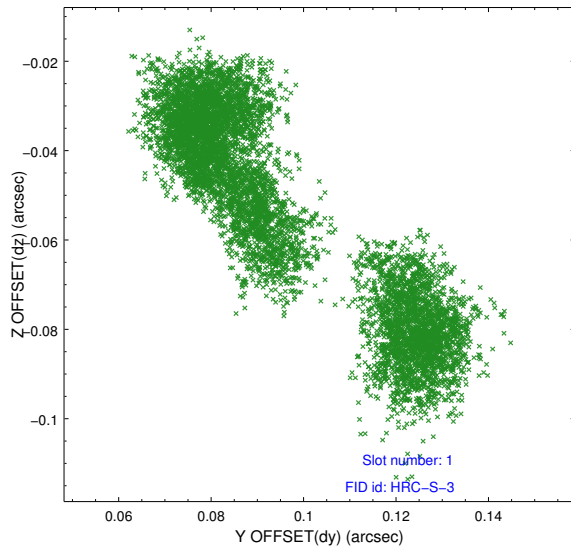


2.5 FID Slots

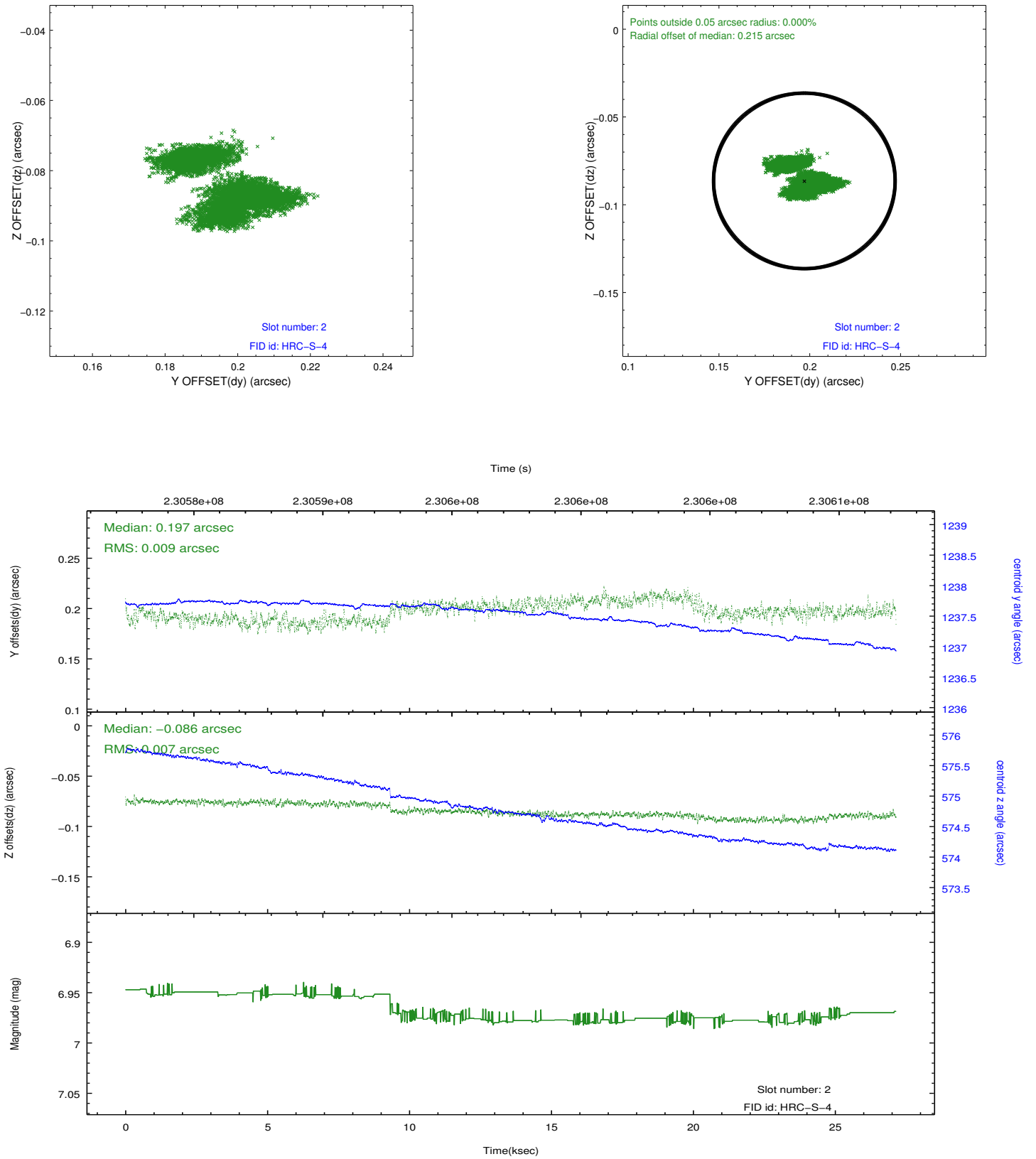
2.5.1 Slot 0



2.5.2 Slot 1



2.5.3 Slot 2



A Summary

A.1 Status

V&V Scientist	Beth Sundheim
V&V Date (YYYY-MM-DD)	2013.07.01
V&V Edition	1
V&V Disposition and Status	OK
V&V Charge Time	27.14943

A.2 Comments