

V&V Reference Report

L2 ASCDS Version : 7.6.7.1

Observation 6221 - L2 Version 002
Chandra X-Ray Center

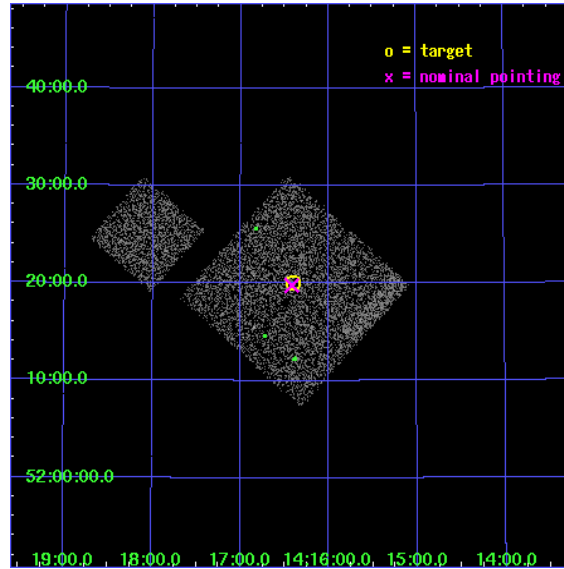
L2 Processing Date : Mar 26 2006

Contents

1	Front	2
2	OBI	3
2.1	OBI	3
2.1.1	Images	3
2.1.2	Bias	3
2.1.3	Parameters	4
2.1.4	Events	4
2.2	Compared Parameters	5
2.3	Aspect	6
2.4	Star Slots	9
2.4.1	Slot 3	9
2.4.2	Slot 4	10
2.4.3	Slot 5	11
2.4.4	Slot 6	12
2.4.5	Slot 7	13
2.5	FID Slots	14
2.5.1	Slot 0	14
2.5.2	Slot 1	15
2.5.3	Slot 2	16
3	Point Sources	17
A	Summary	18
A.1	Status	18
A.2	Comments	18

1 Front

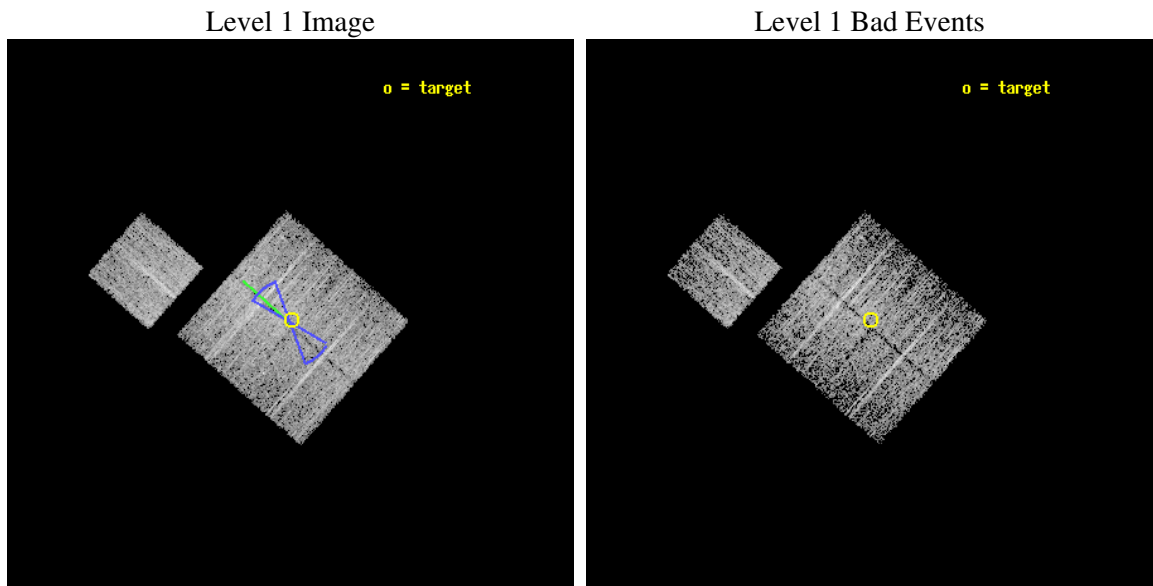
seq_num	900353
obs_id	6221
title	Deep Chandra Imaging of the Extended Groth Strip: The Co-evolution of Black Holes and Galaxies
observer	Professor Kirpal Nandra
object	EGS-6
dtcycle	0
cycle	P
ra_targ	214.102081
dec_targ	52.334053
ra_nom	214.10450458321
dec_nom	52.329670524835
roll_nom	311.65323080973
revision	2
ontime	3763.3590224981
livetime	3714.1879663246
ontime0	3766.499992758
ontime1	3766.499992758
ontime2	3766.499992758
ontime3	3763.3590224981
ontime6	3766.499992758
l2events	12103



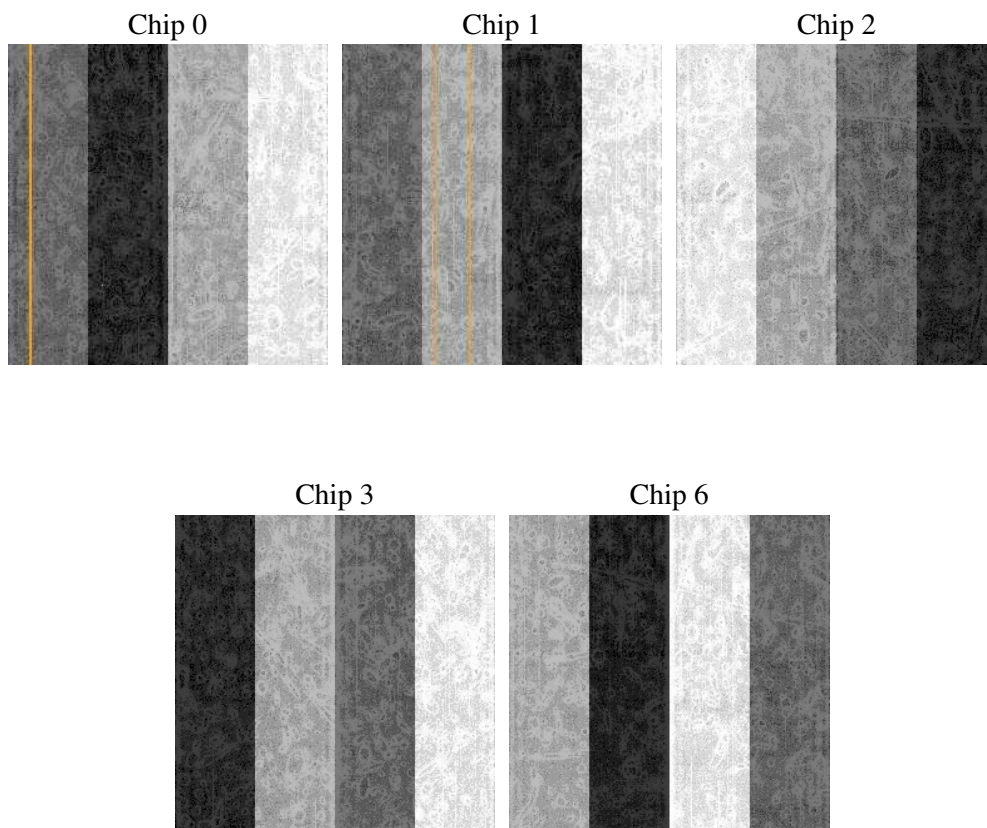
2 OBI

2.1 OBI

2.1.1 Images



2.1.2 Bias



2.1.3 Parameters

obi_num	1
ascdsver	7.6.7.1
caldbver	3.2.1
date	2006-03-26T15:08:04
revision	2

sched_exp_time	45000.000000
ontime	4208.940133214
ontime0	4212.0811034739
ontime1	4212.0811034739
ontime2	4212.0811034739
ontime3	4208.940133214
ontime6	4212.0811034739
llevents	142578

2.1.4 Events

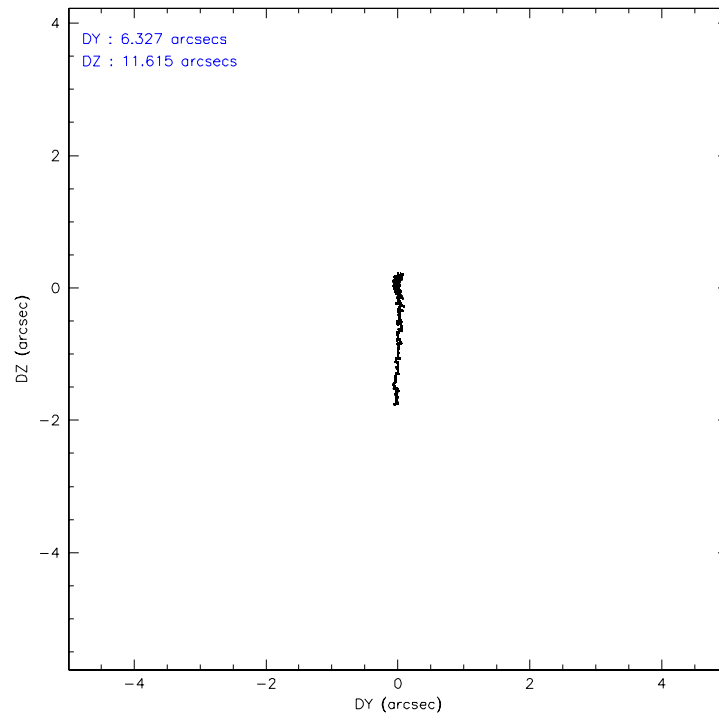
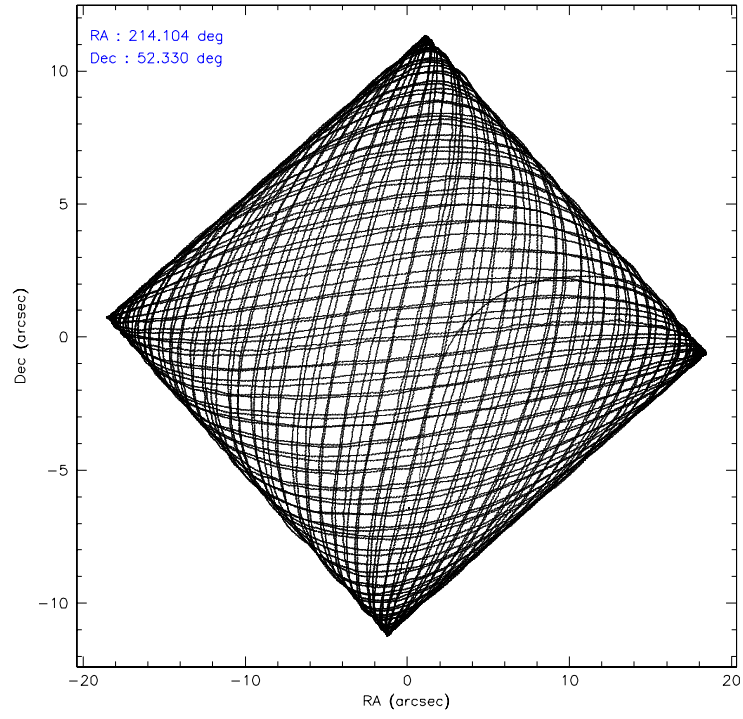
	ccd 0	ccd 1	ccd 2	ccd 3	ccd 6
level 1 events	23909	26490	31562	29555	31062
rejected events	20336	23050	27176	26926	27381
rejected %	85%	87%	86%	91%	88%

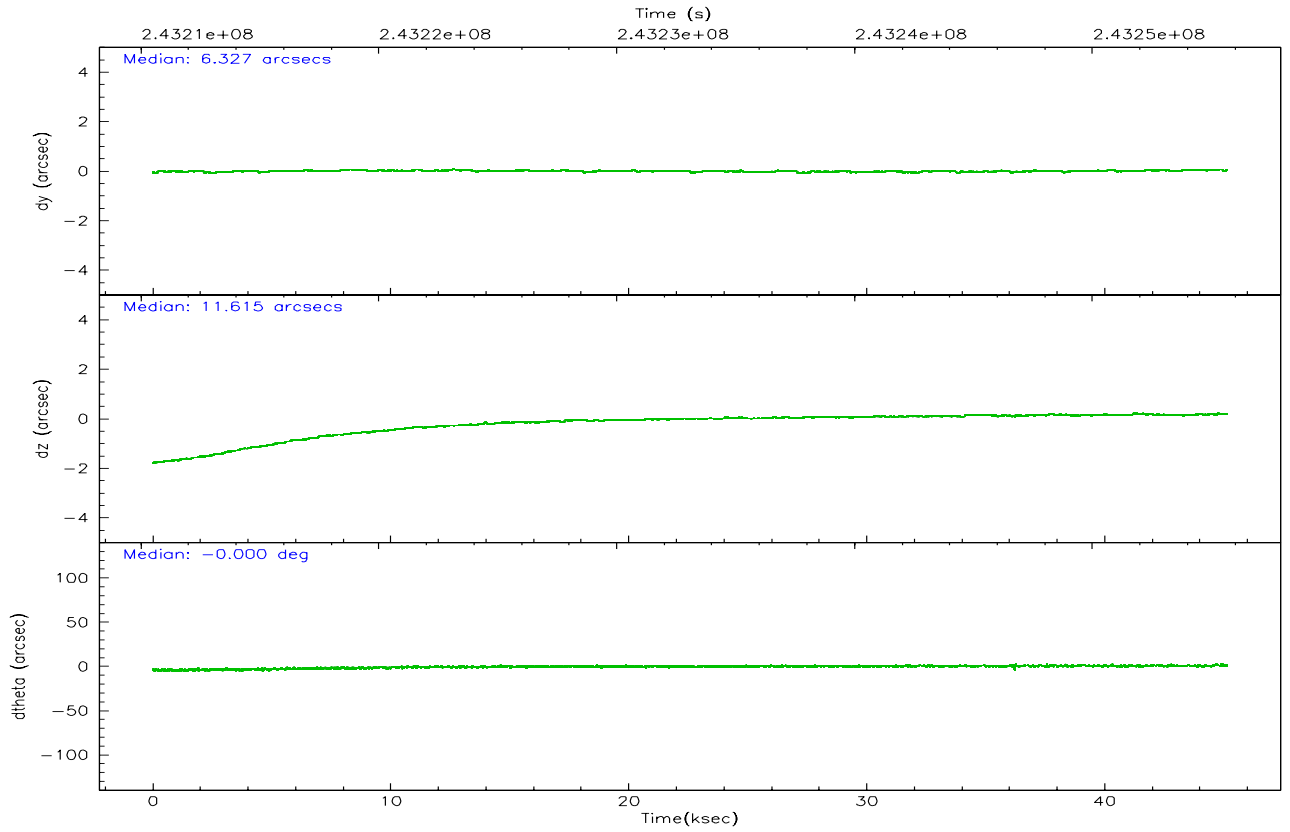
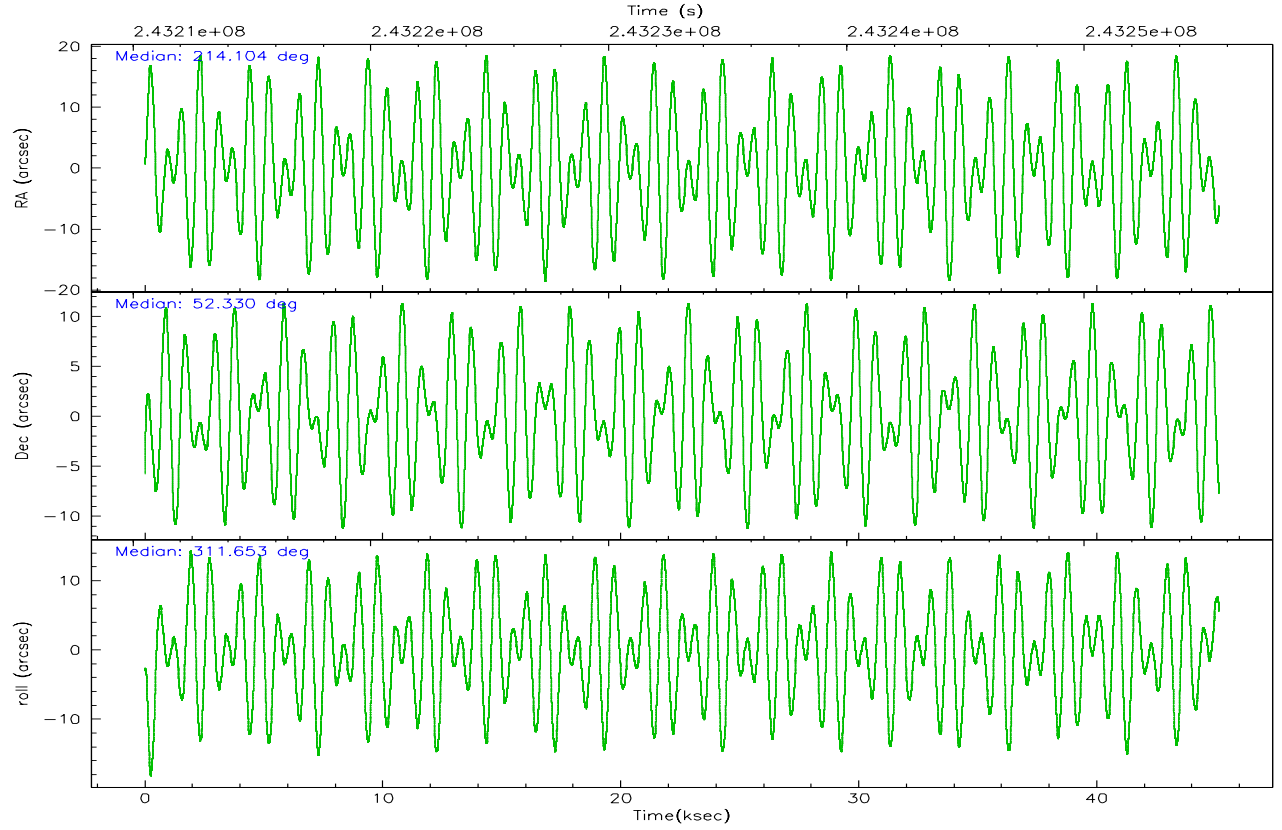
	ccd 0	ccd 1	ccd 2	ccd 3	ccd 6
grade 0 events	1893	1609	2330	1282	1872
	7%	6%	7%	4%	6%
grade 1 events	22	9	28	13	16
	0%	0%	0%	0%	0%
grade 2 events	1103	976	1316	679	1119
	4%	3%	4%	2%	3%
grade 3 events	261	310	255	272	253
	1%	1%	0%	0%	0%
grade 4 events	268	272	492	267	279
	1%	1%	1%	0%	0%
grade 5 events	688	758	702	831	793
	2%	2%	2%	2%	2%
grade 6 events	471	688	558	486	599
	1%	2%	1%	1%	1%
grade 7 events	19203	21868	25881	25725	26131
	80%	82%	82%	87%	84%

2.2 Compared Parameters

Parameter	Planned	Actual	Parameter	Planned	Actual
Instrument	ACIS	ACIS	Obspar format version number	6	6
Detector	ACIS-01236	ACIS-01236	Obspar file type	PREDICTED	ACTUAL
Grating	NONE	NONE	Obspar update status	NONE	UPDATED
Data mode	VFAINT	VFAINT	On-chip summing requested	N	N
Observation mode	POINTING	POINTING	Subarray requested	NONE	NONE
Pointing RA	214.061923	214.1045045832083	Alternating exposures requested	N	N
Pointing Dec	52.338164	52.32967052483519	Primary exposure time	0.000000	3.1
Pointing Roll	311.478249	311.6532308097293			
Roll angle	50.756000	50.756000			
Roll tolerance	20.000000	20.000000			
Roll constraint allows 180D rotation	Y	Y			
SIM focus pos (mm)	-0.782348	-0.7809083437167272			
SIM defocus (mm)	0	0.001439871863259334			
SIM translation stage pos (mm)	-233.592463	-233.5874344608287			
SIM translation stage offset (mm)	0	-0.005018542100998502			
Observation start time	243210664.184000	243209472.17658			
Observation start date	2005-09-15T22:30:00	2005-09-15T22:11:12			
Observation end time	243255664.184000	243256543.25375			
Observation end date	2005-09-16T11:00:00	2005-09-16T11:15:43			
Read mode	TIMED	TIMED			

2.3 Aspect



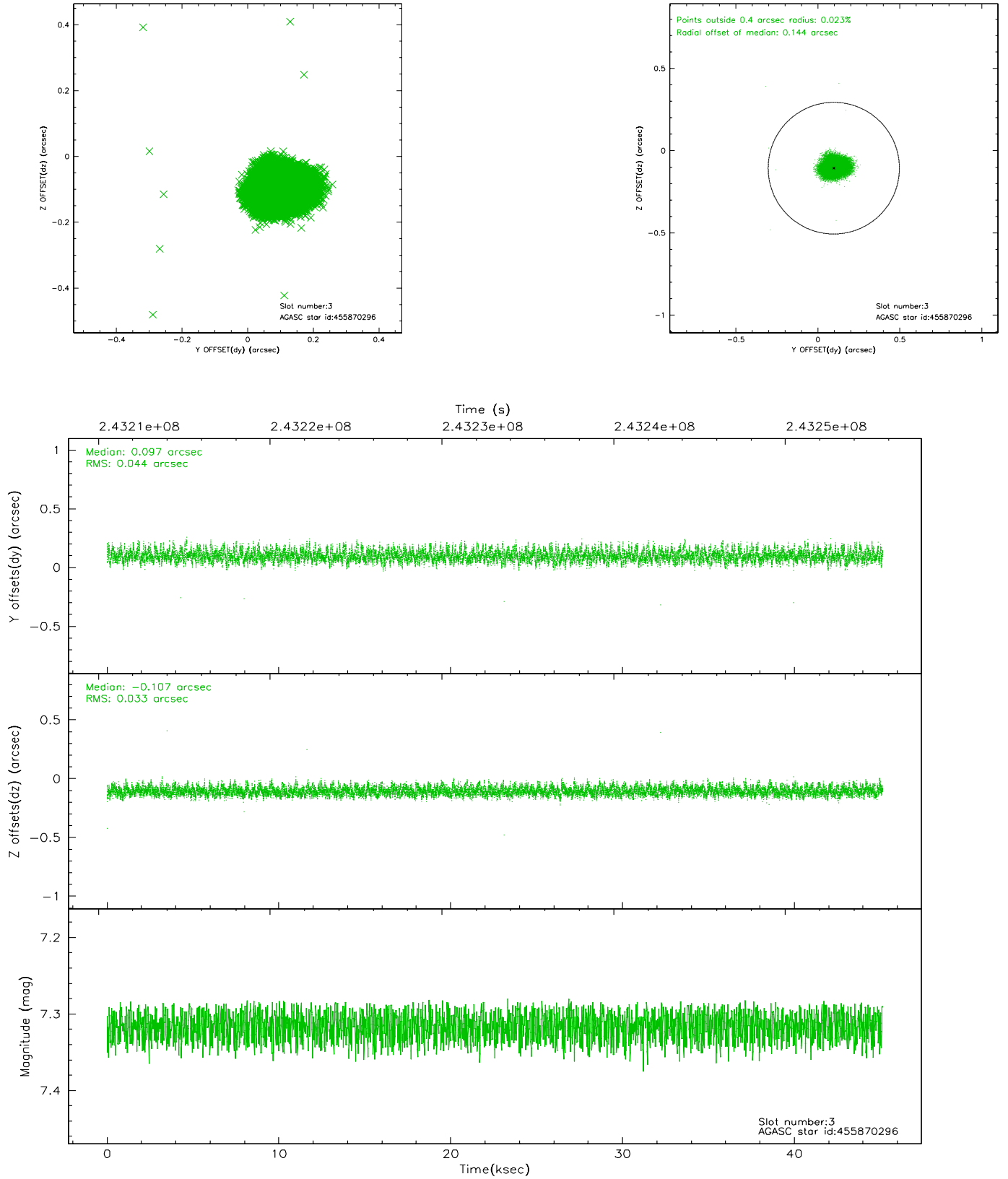


Slot Statistics

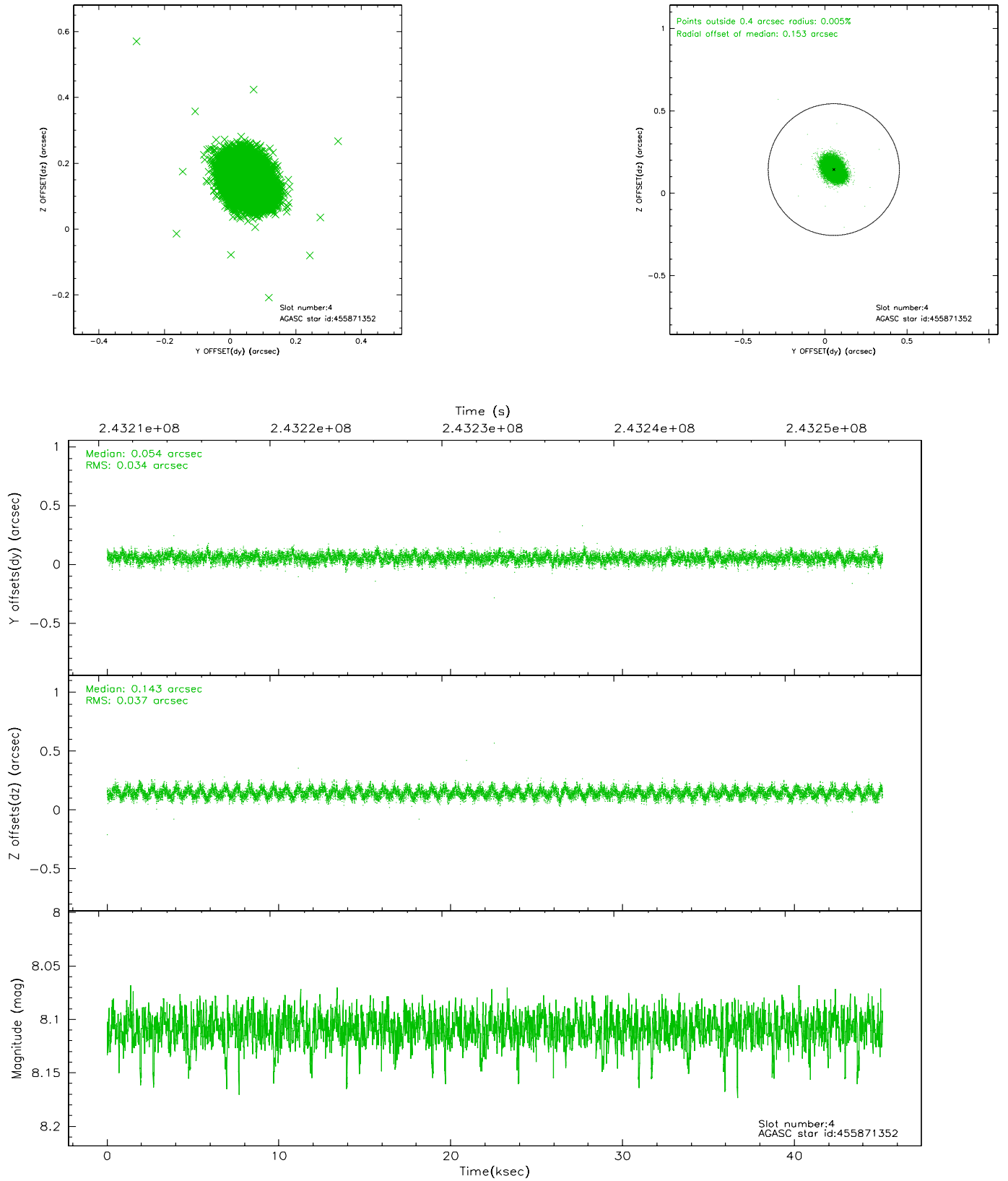
slot	status	id	mag	n_pts	med_dy	med_dz	dr1	dr2	ra	dec	mean_y	mean_z
0	FID	ACIS-I-2	7.14	11010	-0.003	-0.055	0.013	0.021	0.000000	0.000000	-760.83	-841.29
1	FID	ACIS-I-5	7.23	11011	-0.126	0.071	0.010	0.019	0.000000	0.000000	-1814.99	1062.71
2	FID	ACIS-I-6	7.25	11011	0.034	0.051	0.013	0.031	0.000000	0.000000	399.00	1707.13
3	GUIDE	455870296	7.32	22020	0.097	-0.107	0.059	0.094	214.629779	52.033323	1651.68	218.66
4	GUIDE	455871352	8.11	22014	0.054	0.143	0.053	0.086	215.099961	52.172669	1952.19	1333.58
5	GUIDE	505806936	7.01	22022	-0.025	-0.205	0.068	0.104	213.820815	52.535927	-883.60	76.56
6	GUIDE	505812376	7.62	21964	-0.168	-0.133	0.039	0.064	214.039537	52.937930	-1649.97	1393.74
7	GUIDE	504894728	8.82	22018	0.034	0.295	0.066	0.107	213.220892	52.722550	-2259.28	-449.83

2.4 Star Slots

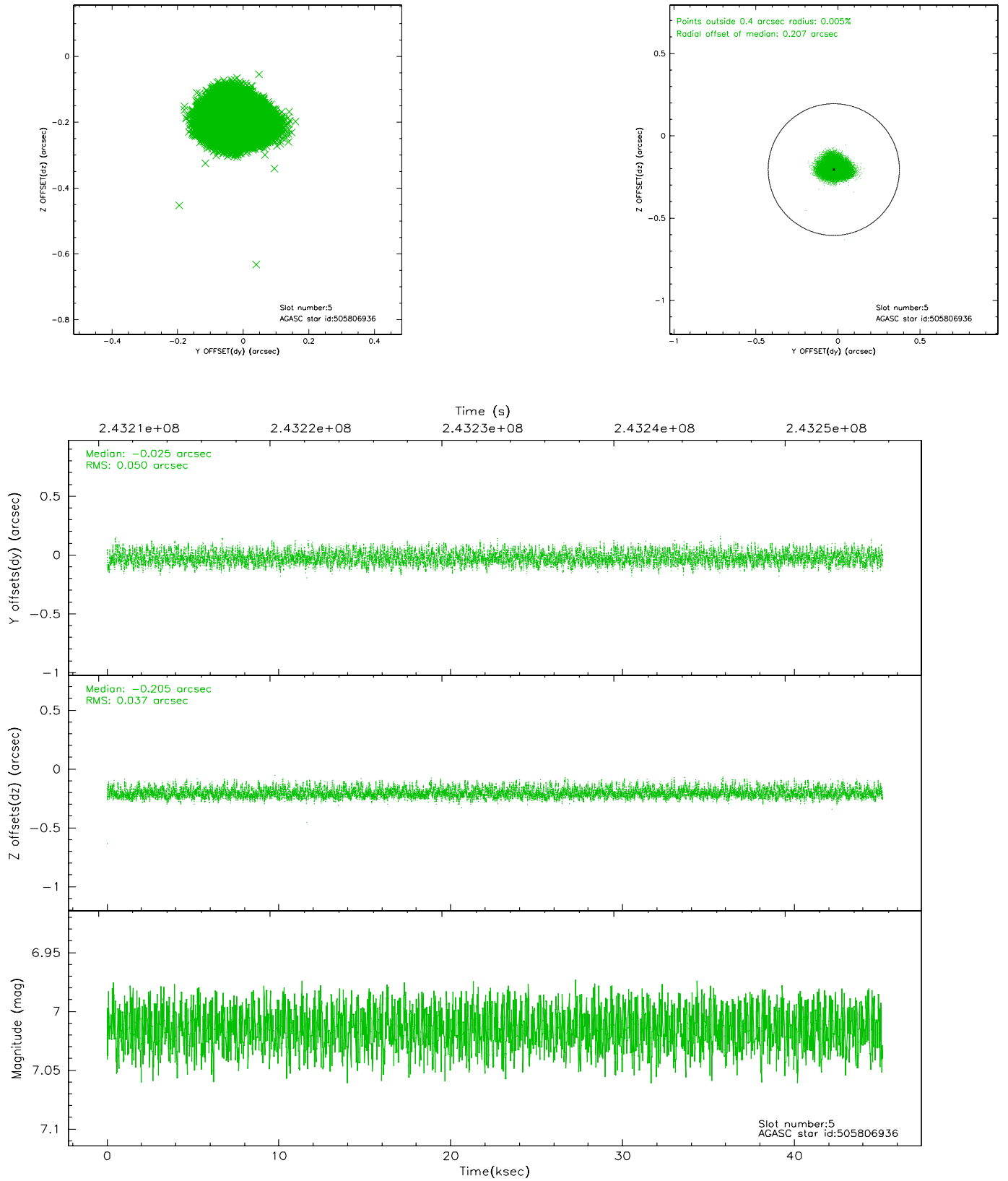
2.4.1 Slot 3



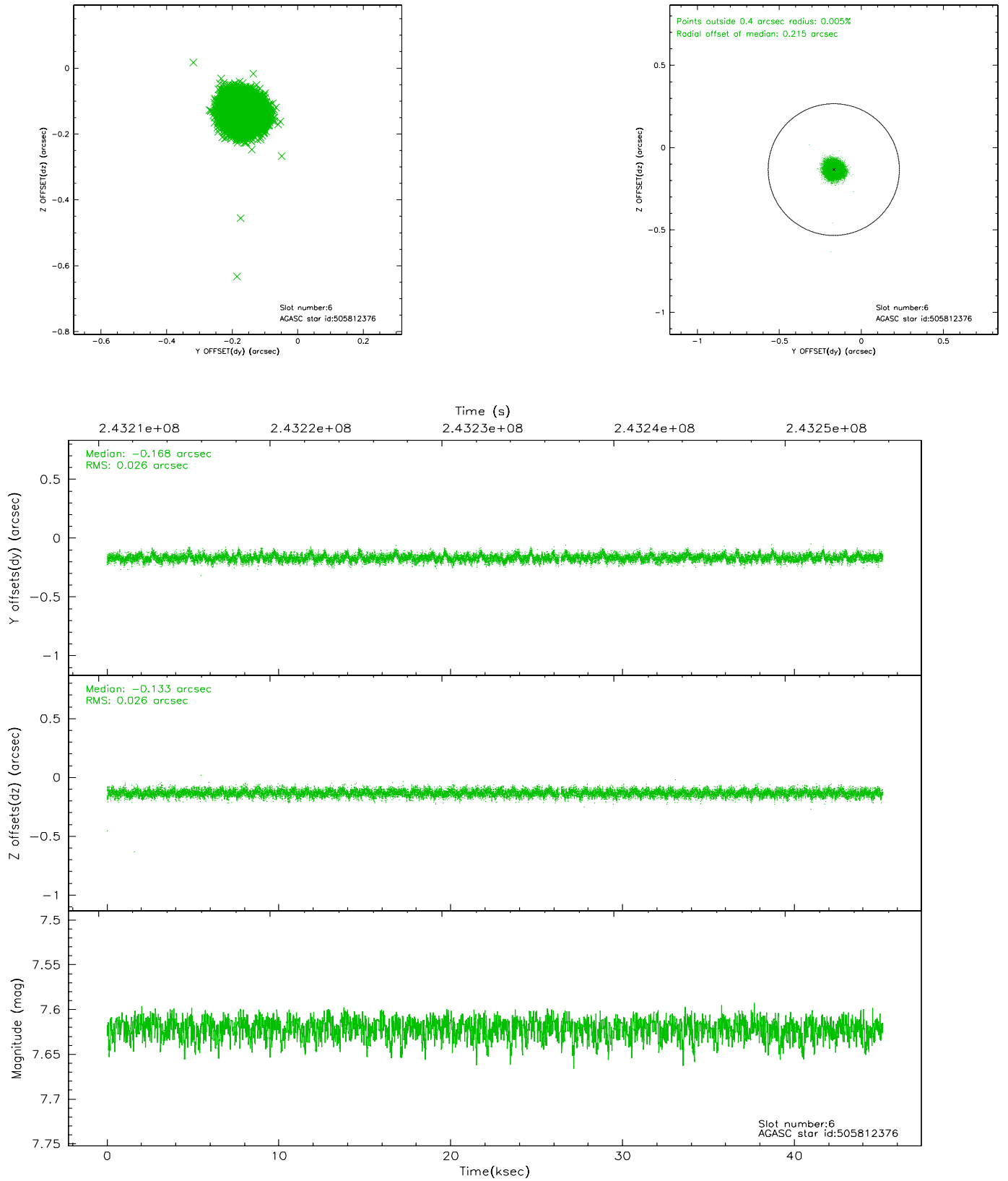
2.4.2 Slot 4



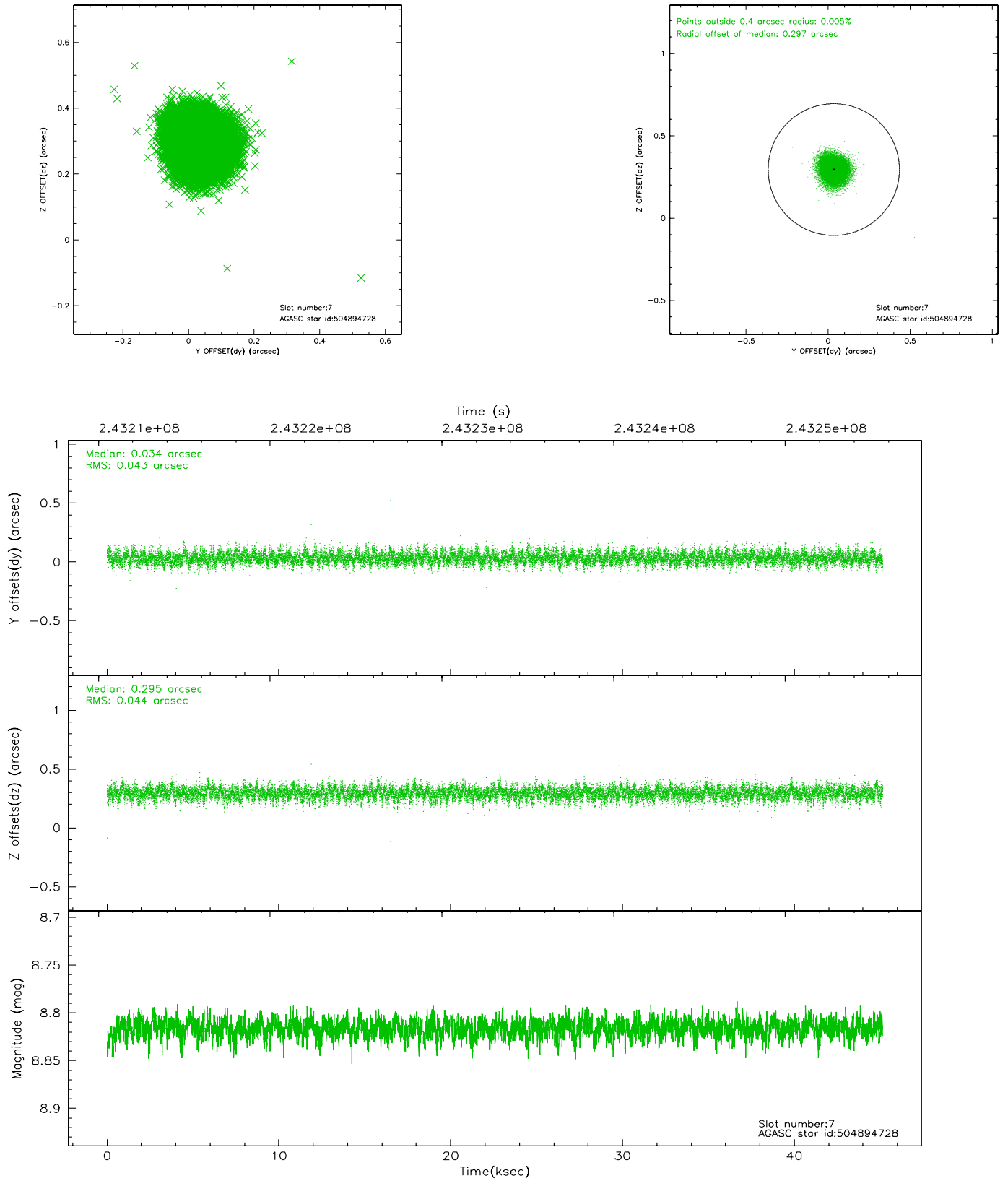
2.4.3 Slot 5



2.4.4 Slot 6

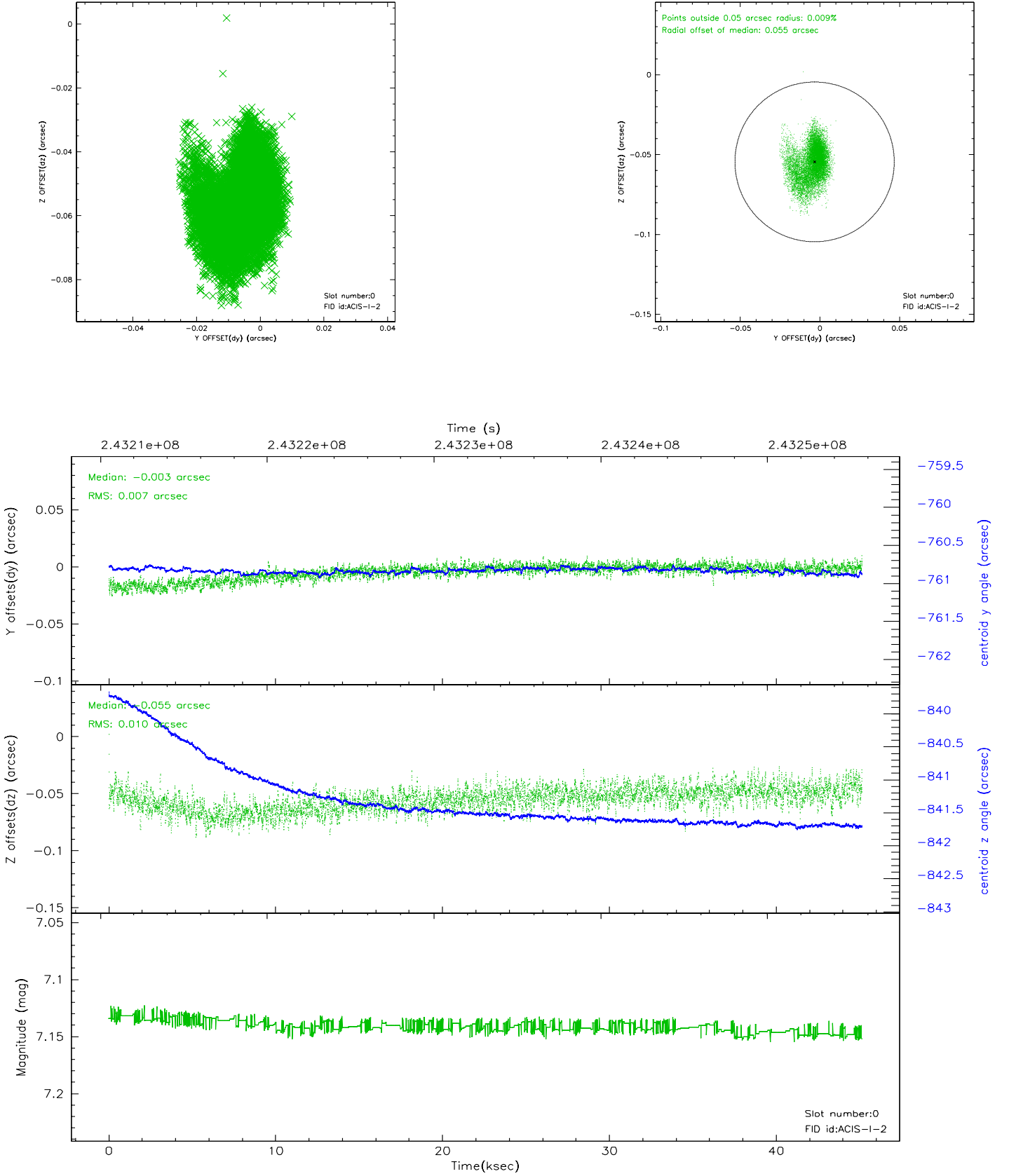


2.4.5 Slot 7

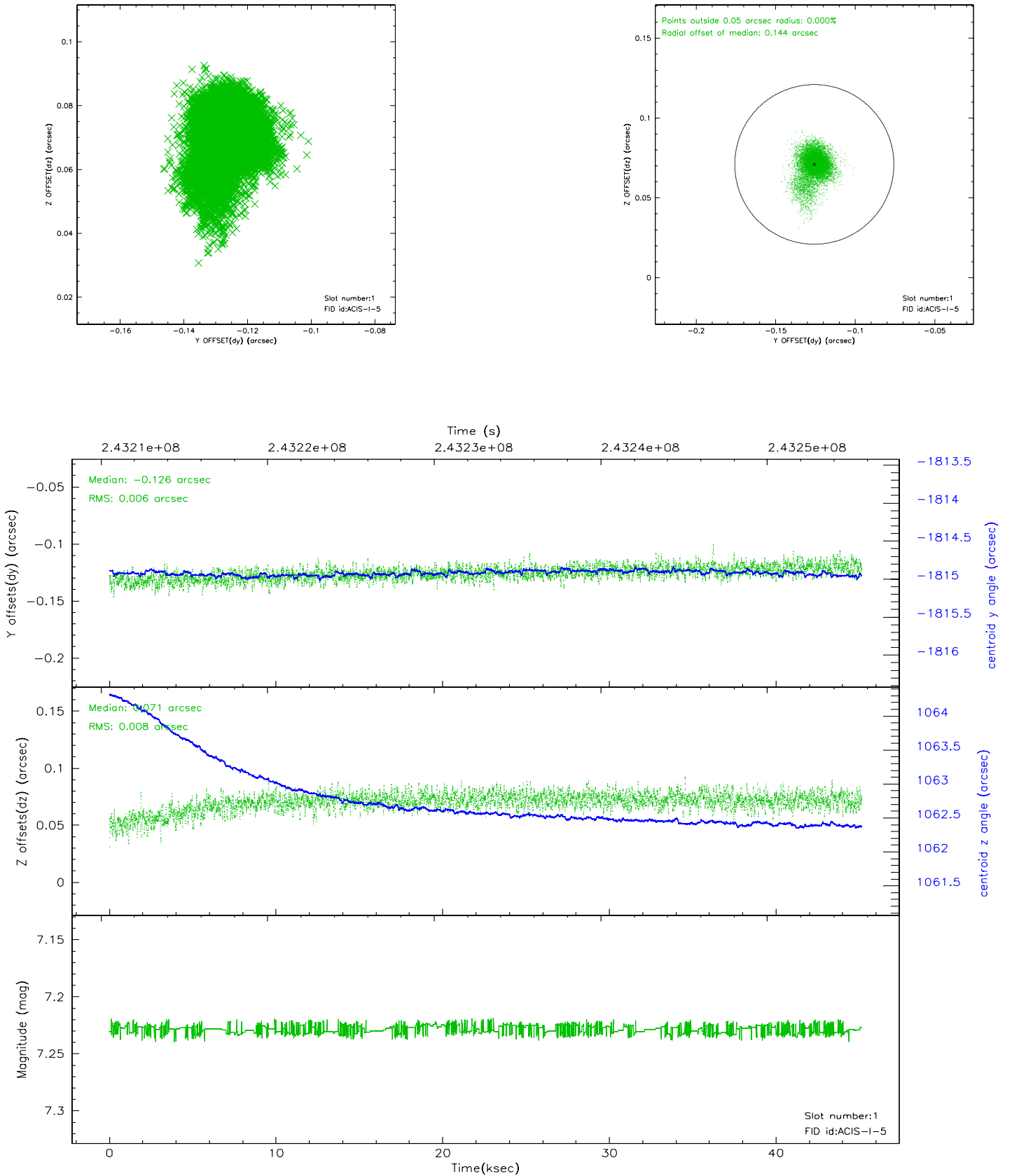


2.5 FID Slots

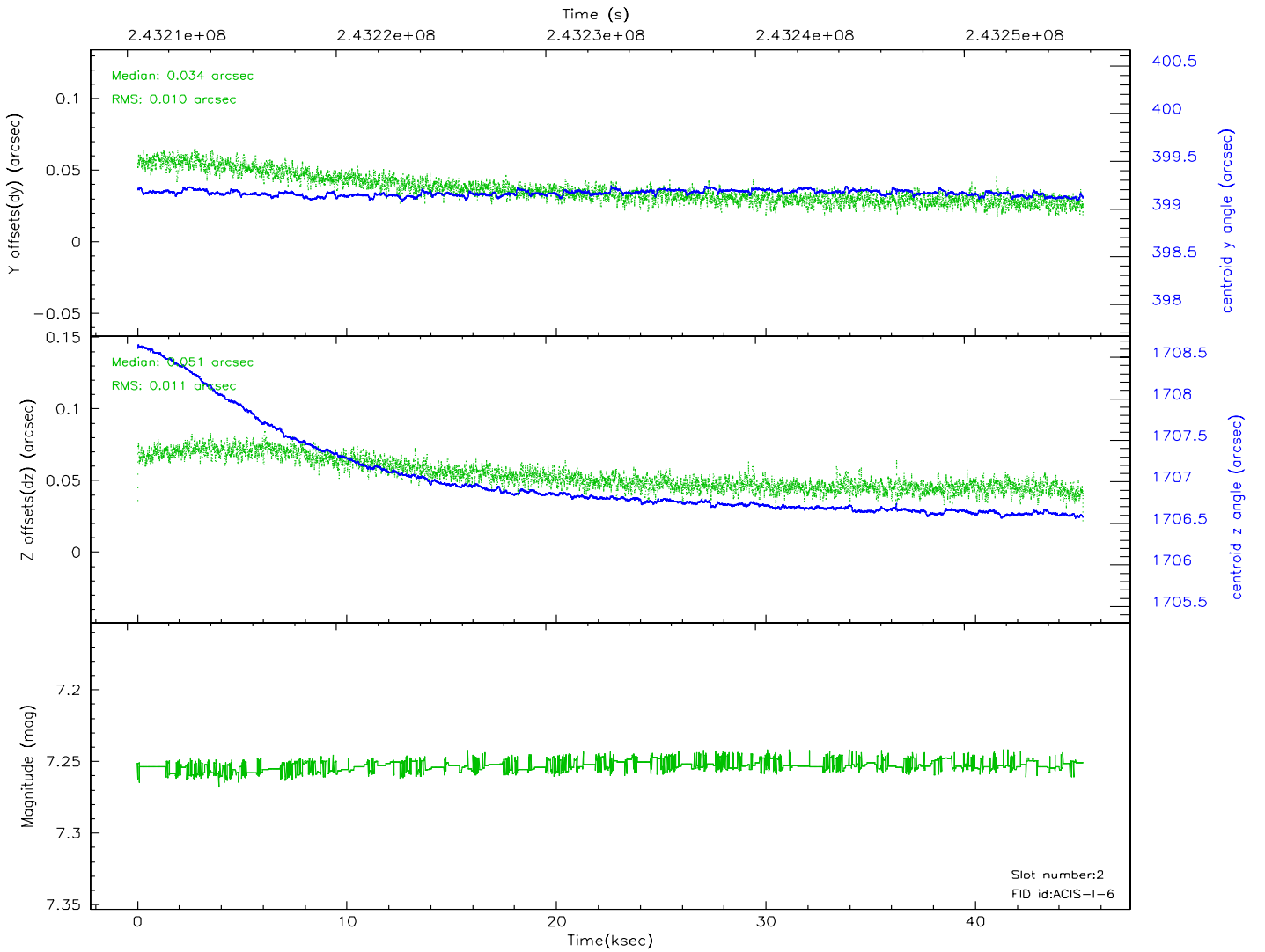
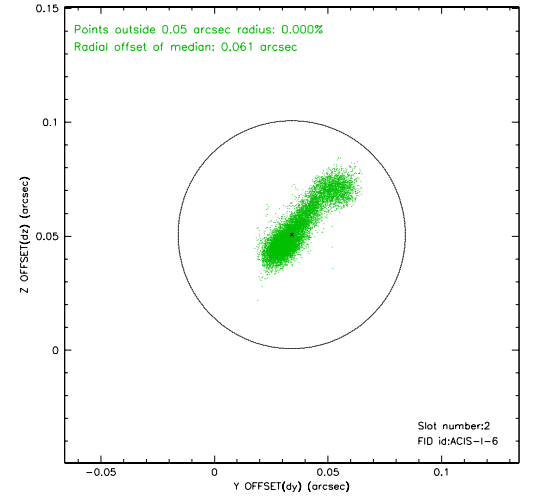
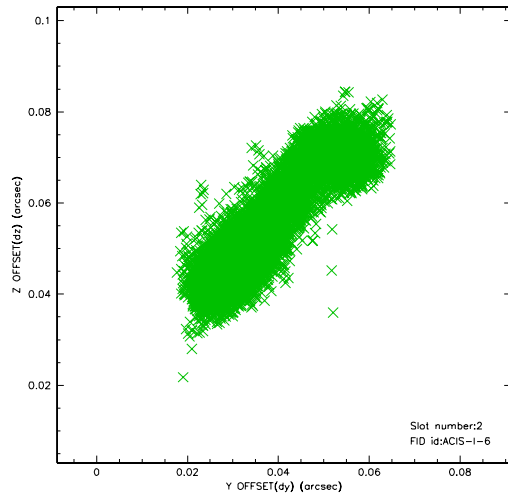
2.5.1 Slot 0



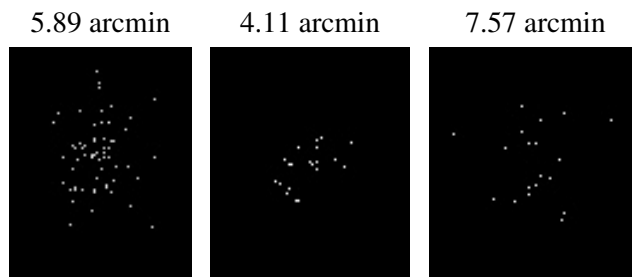
2.5.2 Slot 1



2.5.3 Slot 2



3 Point Sources



A Summary

A.1 Status

V&V Scientist	Beth Sundheim
V&V Date (YYYY-MM-DD)	2006.03.31
V&V Edition	1
V&V Disposition and Status	OK
V&V Charge Time	3.763359

A.2 Comments

Roll constraint satisfied.