

V&V Reference Report

L2 ASCDS Version : 7.6.10

Observation 621 - L2 Version 001
Chandra X-Ray Center

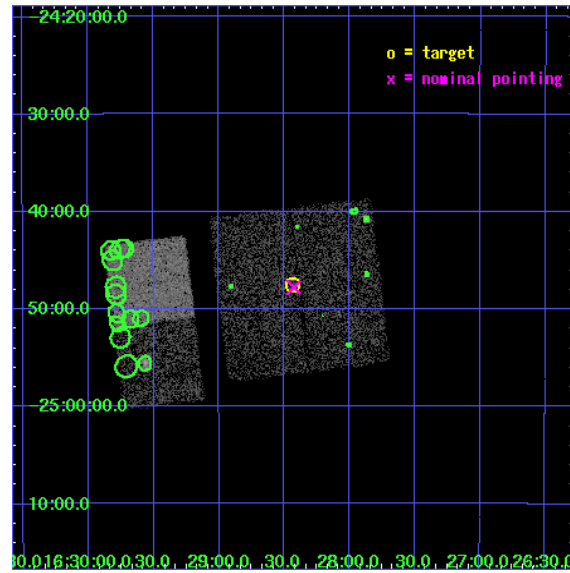
L2 Processing Date : Jun 1 2007

Contents

1	Front	2
2	OBI	3
2.1	OBI	3
2.1.1	Images	3
2.1.2	Bias	3
2.1.3	Parameters	4
2.1.4	Events	4
2.2	Compared Parameters	5
2.3	Aspect	6
2.4	Star Slots	9
2.4.1	Slot 3	9
2.4.2	Slot 4	10
2.4.3	Slot 5	11
2.4.4	Slot 6	12
2.4.5	Slot 7	13
2.5	FID Slots	14
2.5.1	Slot 0	14
2.5.2	Slot 1	15
2.5.3	Slot 2	16
3	Point Sources	17
A	Summary	18
A.1	Status	18
A.2	Comments	18

1 Front

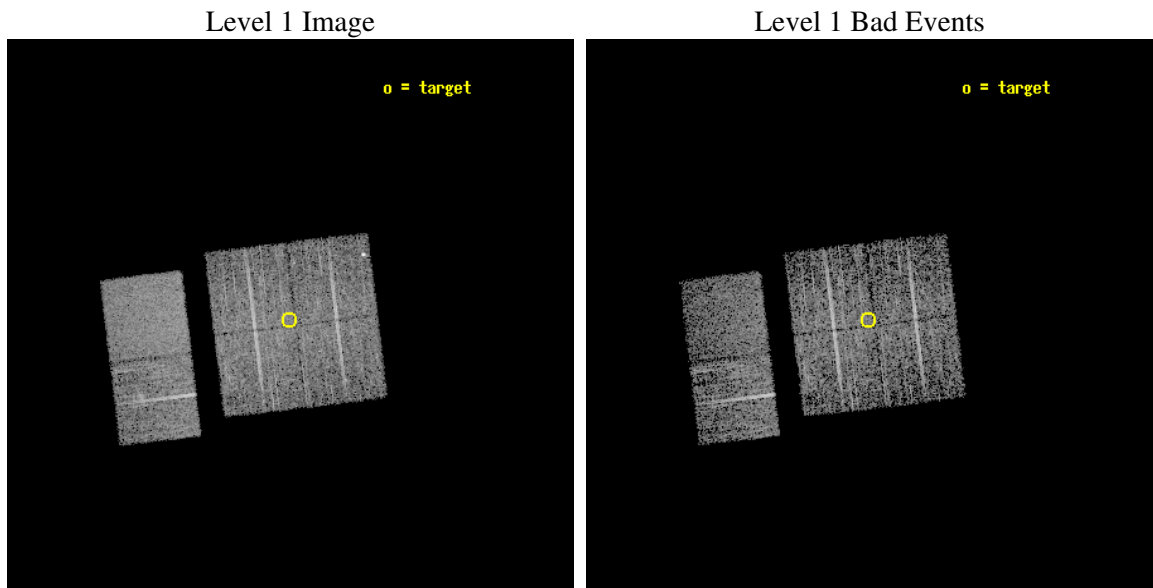
seq_num	200046
obs_id	621
title	X-RAYS FROM THE RHO OPHIUCHI YOUNG STAR CLUSTER
observer	DR. THIERRY MONTMERLE
object	OPHIUCHI MOSAIC #9
dtcycle	0
cycle	P
ra_targ	247.109167
dec_targ	-24.7925
ra_nom	247.10654218147
dec_nom	-24.796801979595
roll_nom	263.11868281866
revision	3
ontime	5116.8000047654
livetime	5052.008002138
ontime0	5116.8000047654
ontime1	5116.8000047654
ontime2	5116.8000047654
ontime3	5116.8000047654
ontime6	5116.8000047654
ontime7	5116.8000047654
l2events	30632



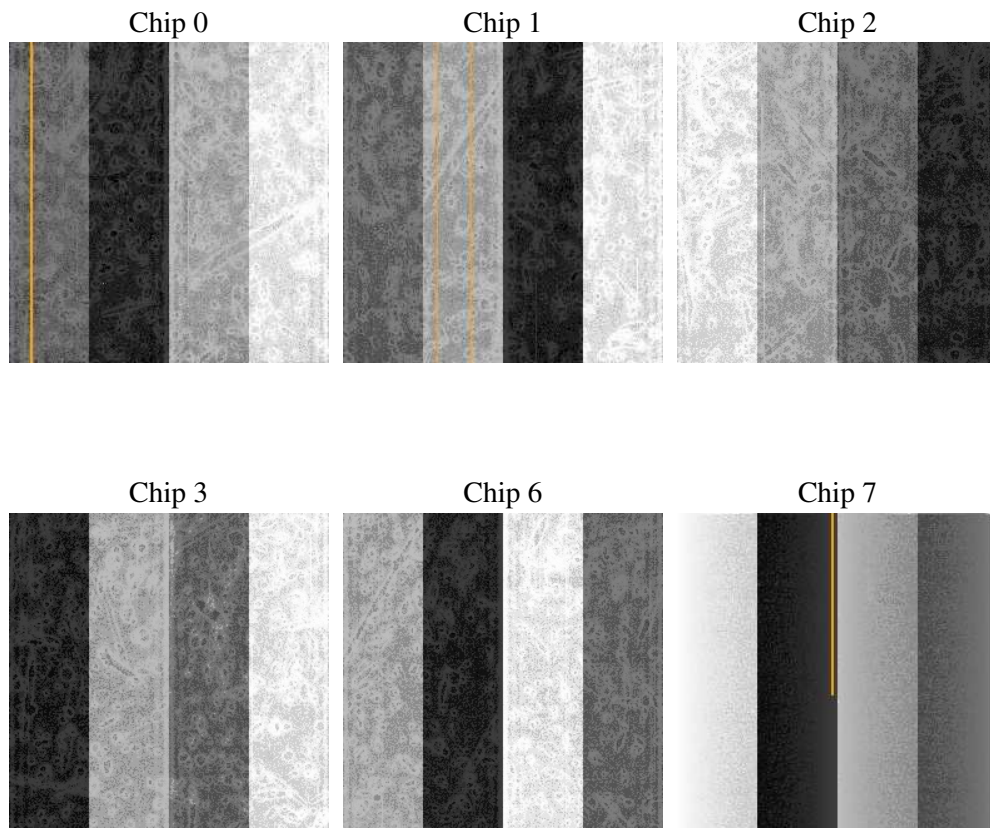
2 OBI

2.1 OBI

2.1.1 Images



2.1.2 Bias



2.1.3 Parameters

obi_num	0
ascdsver	7.6.10
caldsver	3.4.0
date	2007-06-01T02:51:48
revision	3

sched_exp_time	5000.000000
ontime	5116.8000047654
ontime0	5116.8000047654
ontime1	5116.8000047654
ontime2	5116.8000047654
ontime3	5116.8000047654
ontime6	5116.8000047654
ontime7	5116.8000047654
l1events	181335

2.1.4 Events

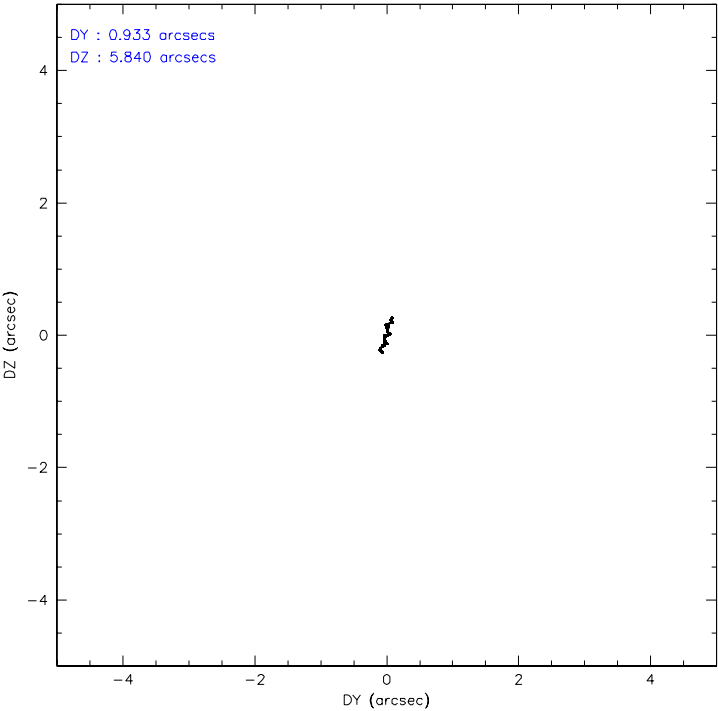
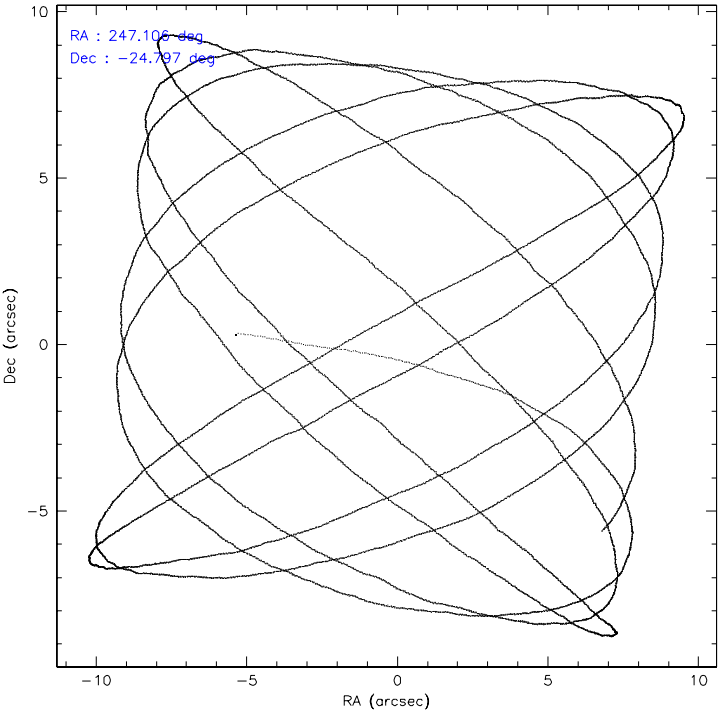
	ccd 0	ccd 1	ccd 2	ccd 3	ccd 6	ccd 7
level 1 events	27007	27627	29994	29840	30857	36010
rejected events	23500	23140	26799	26486	27045	20804
rejected %	87%	83%	89%	88%	87%	57%

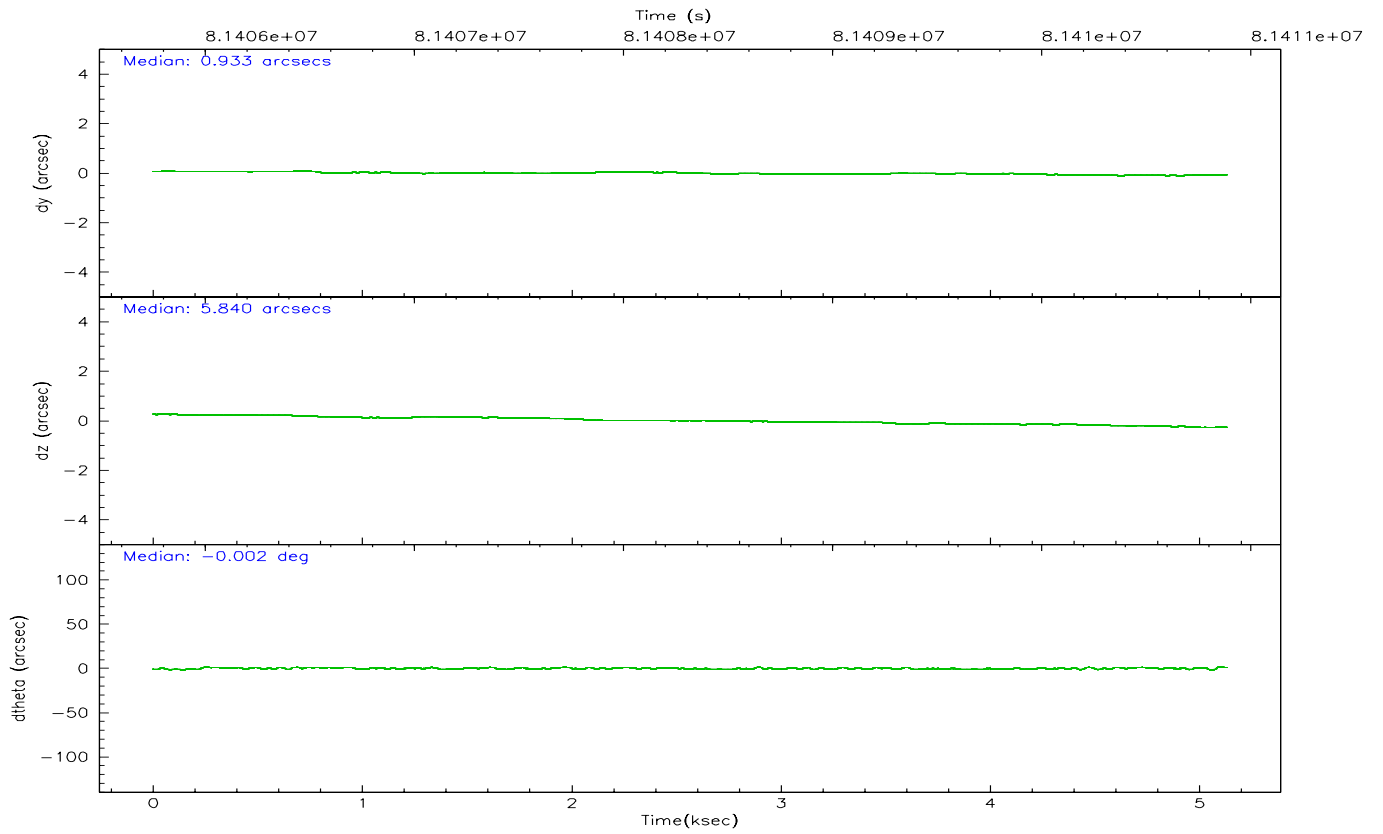
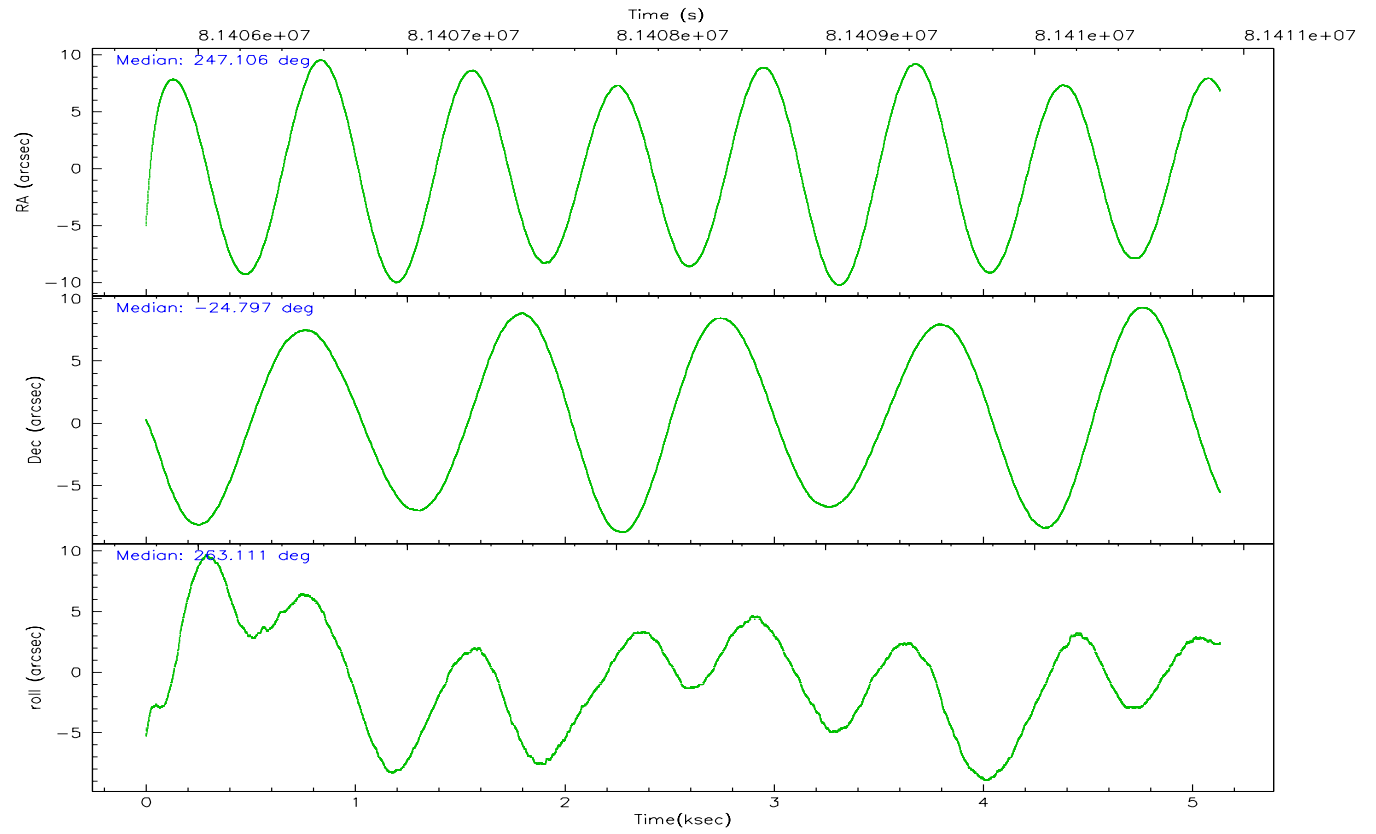
	ccd 0	ccd 1	ccd 2	ccd 3	ccd 6	ccd 7
grade 0 events	1606	2241	1382	1444	1742	1532
	5%	8%	4%	4%	5%	4%
grade 1 events	17	17	11	17	18	26
	0%	0%	0%	0%	0%	0%
grade 2 events	720	785	638	678	759	2910
	2%	2%	2%	2%	2%	8%
grade 3 events	319	393	293	326	369	1467
	1%	1%	0%	1%	1%	4%
grade 4 events	318	415	306	299	332	1360
	1%	1%	1%	1%	1%	3%
grade 5 events	979	1029	964	1048	1197	3378
	3%	3%	3%	3%	3%	9%
grade 6 events	546	660	578	613	617	7955
	2%	2%	1%	2%	1%	22%
grade 7 events	22502	22087	25822	25415	25823	17382
	83%	79%	86%	85%	83%	48%

2.2 Compared Parameters

Parameter	Planned	Actual	Parameter	Planned	Actual
Instrument	ACIS	ACIS	Obspar format version number	6	6
Detector	ACIS-012367	ACIS-012367	Obspar file type	PREDICTED	ACTUAL
Grating	NONE	NONE	Obspar update status	NONE	UPDATED
Data mode	FAINT	FAINT	Number of optional ACIS chips dropped	0	0
Observation mode	POINTING	POINTING	On-chip summing requested	N	N
Pointing RA	247.094673	247.1065421814717	Subarray requested	NONE	NONE
Pointing Dec	-24.771382	-24.79680197959504	Alternating exposures requested	N	N
Pointing Roll	262.905014	263.1186828186592	Primary exposure time	3.200000	3.2
SIM focus pos (mm)	-0.782348	-0.7809083437167272			
SIM defocus (mm)	0	0.001439871863259334			
SIM translation stage pos (mm)	-233.592463	-233.5874344608287			
SIM translation stage offset (mm)	0	-0.005018542100998502			
Observation start time	81405885.184000	81404754.011287			
Observation start date	2000-07-31T04:43:41	2000-07-31T04:25:54			
Observation end time	81410885.184000	81411429.324035			
Observation end date	2000-07-31T06:07:01	2000-07-31T06:17:09			
Read mode	TIMED	TIMED			

2.3 Aspect



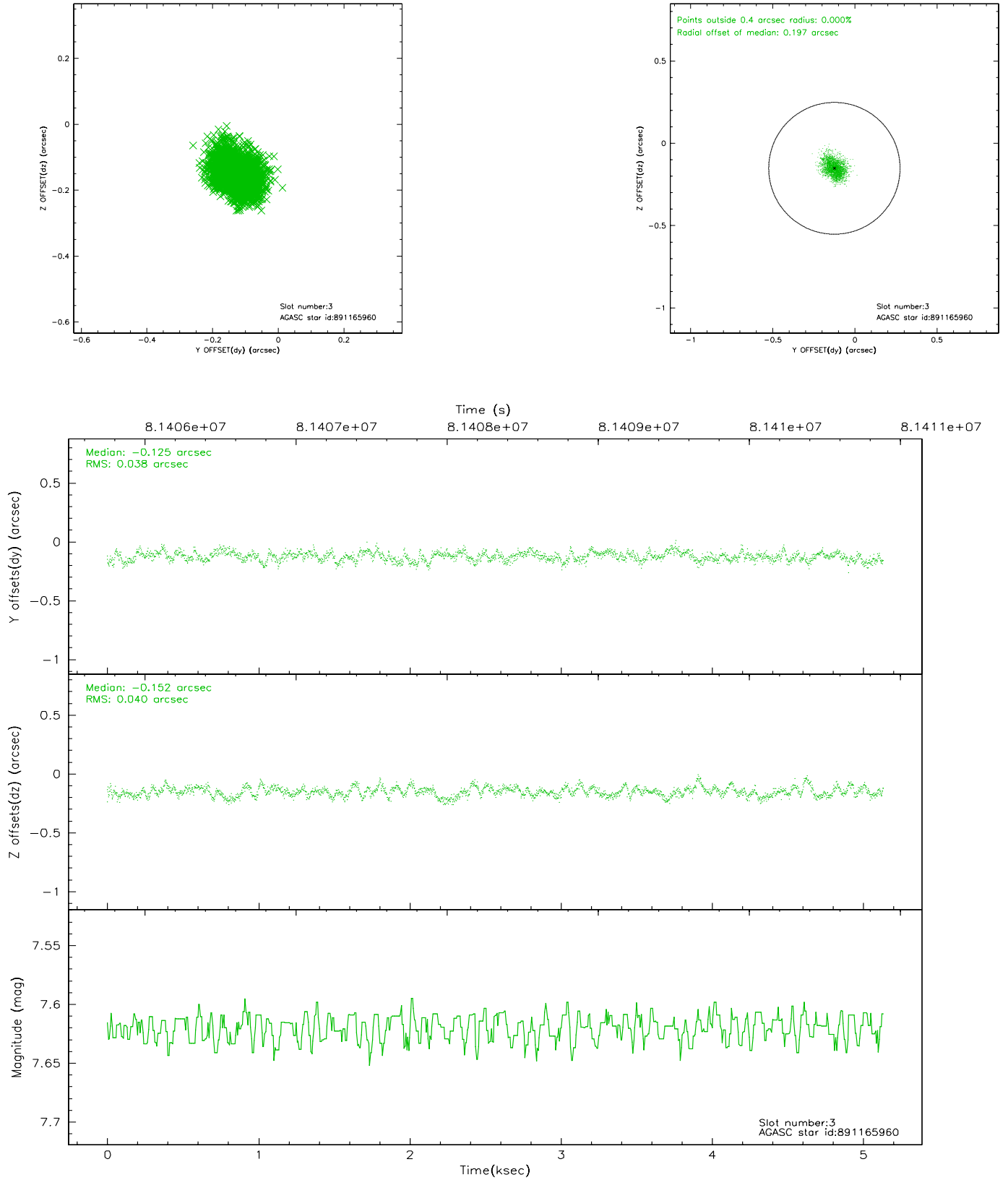


Slot Statistics

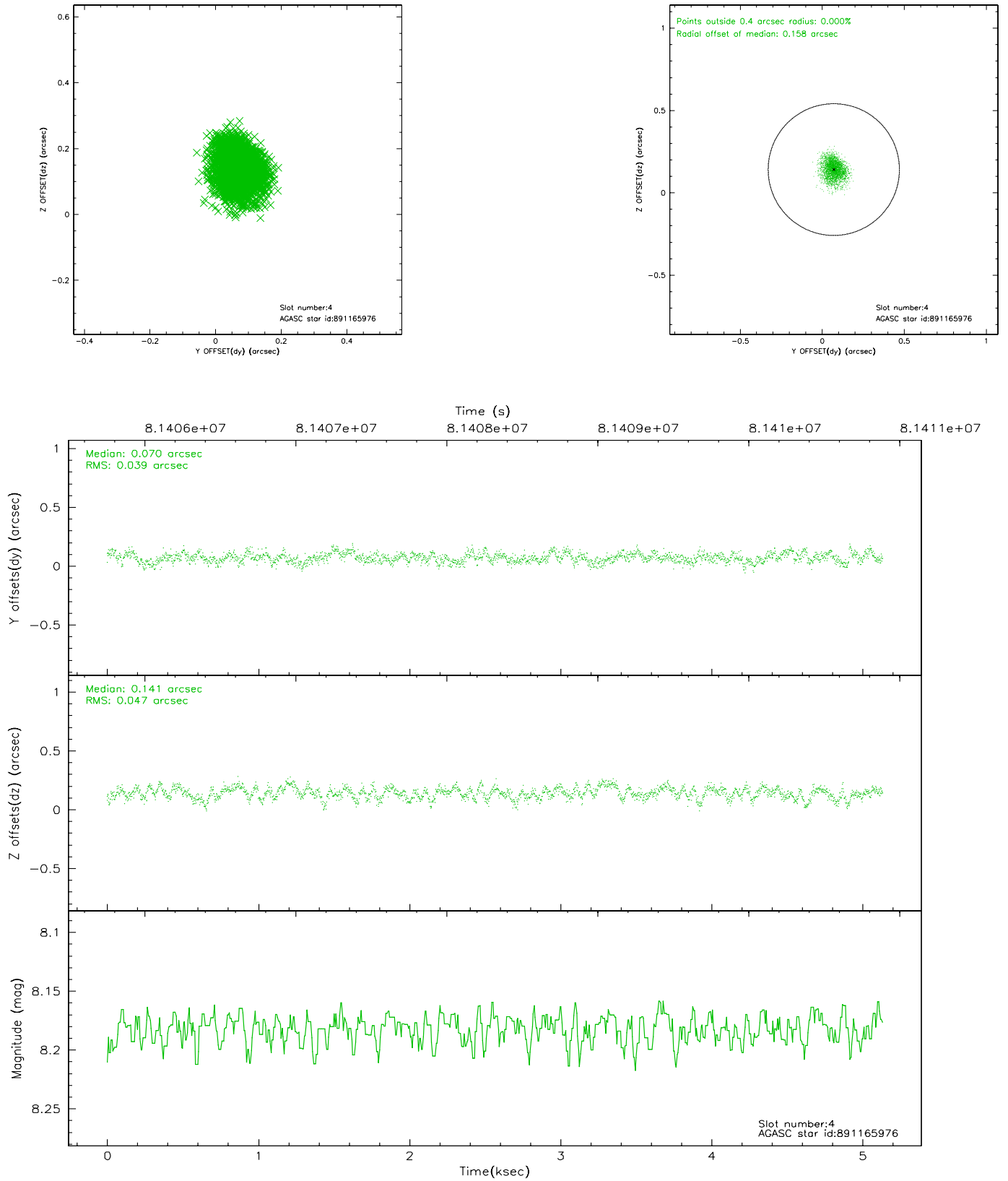
slot	status	id	mag	n_pts	med_dy	med_dz	dr1	dr2	ra	dec	mean_y	mean_z
0	FID	ACIS-I-2	7.15	1252	-0.015	-0.026	0.010	0.017	0.000000	0.000000	-755.26	-835.61
1	FID	ACIS-I-4	7.18	1253	-0.101	0.026	0.006	0.010	0.000000	0.000000	2158.17	1070.04
2	FID	ACIS-I-5	7.23	1253	0.015	0.070	0.009	0.015	0.000000	0.000000	-1807.54	1069.27
3	GUIDE	891165960	7.62	2505	-0.125	-0.152	0.059	0.095	247.245842	-24.537990	-895.09	387.70
4	GUIDE	891165976	8.18	2505	0.070	0.141	0.066	0.105	247.477470	-24.979460	589.98	1333.17
5	GUIDE	891028200	9.66	2504	0.261	-0.045	0.090	0.145	246.880837	-25.150608	1441.60	-521.72
6	GUIDE	891028104	9.35	2506	-0.210	-0.029	0.082	0.133	246.615701	-25.040208	1156.24	-1430.04
7	GUIDE	891165992	7.55	2505	0.002	0.083	0.057	0.088	247.496655	-25.147789	1184.75	1467.69

2.4 Star Slots

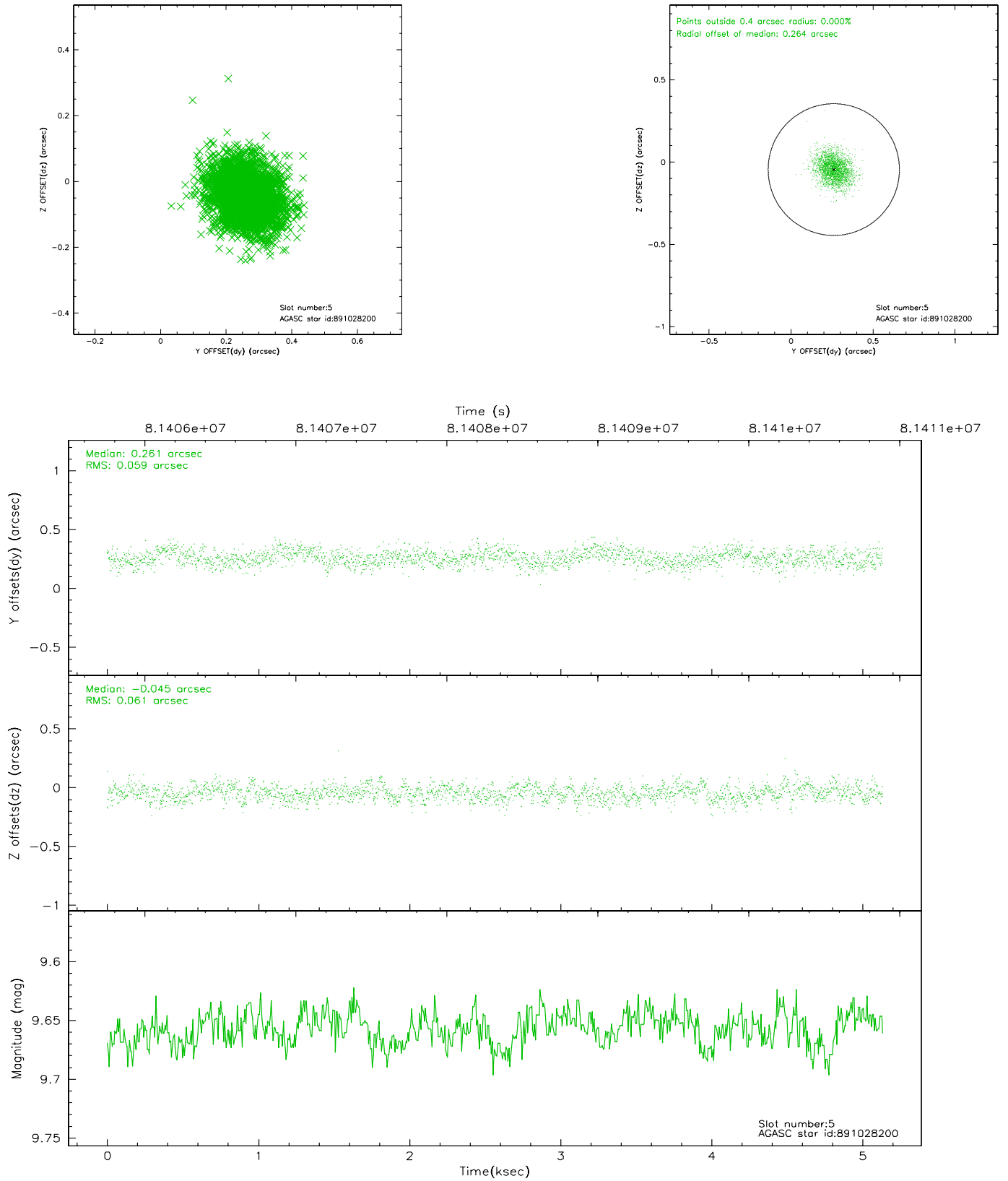
2.4.1 Slot 3



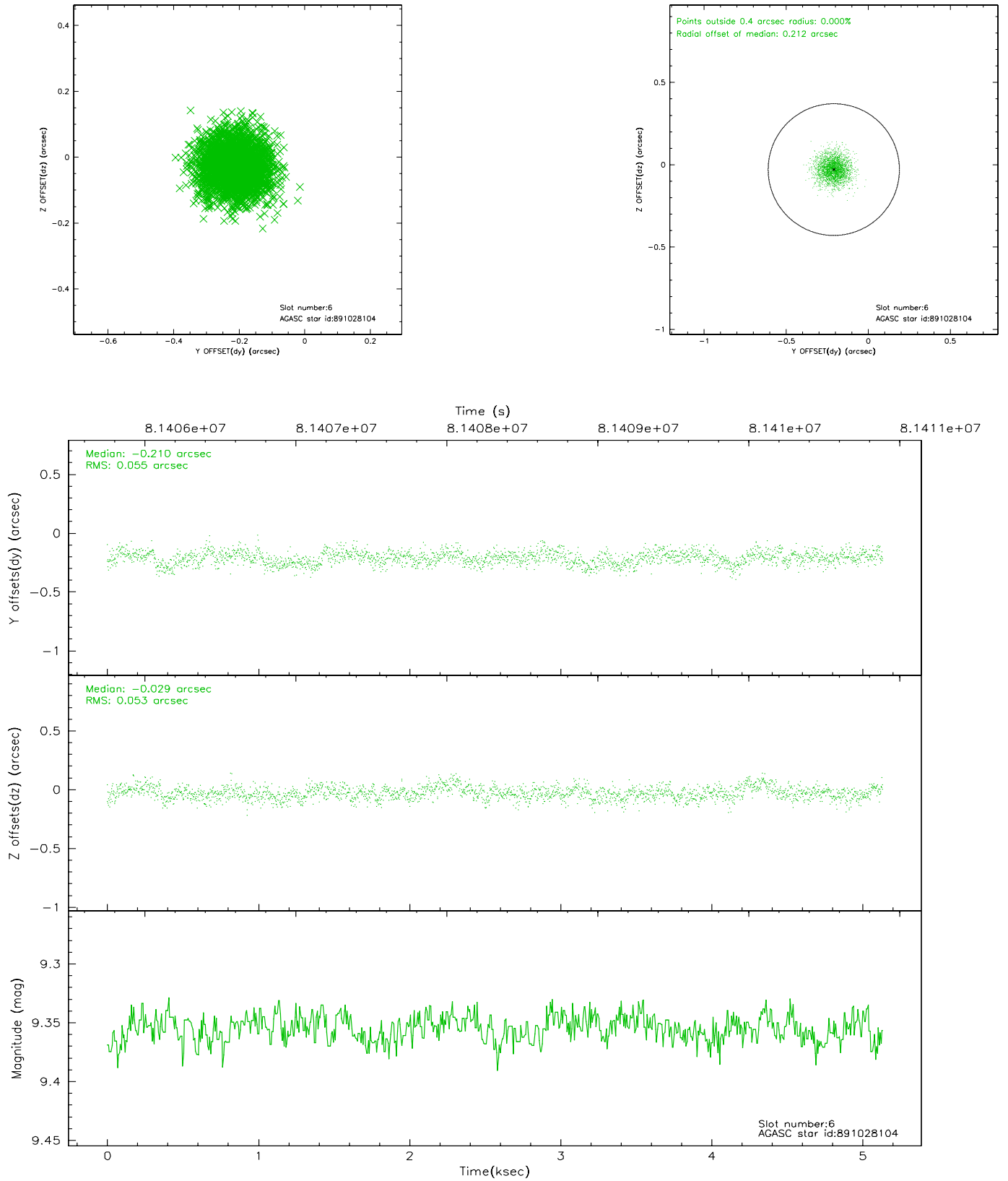
2.4.2 Slot 4



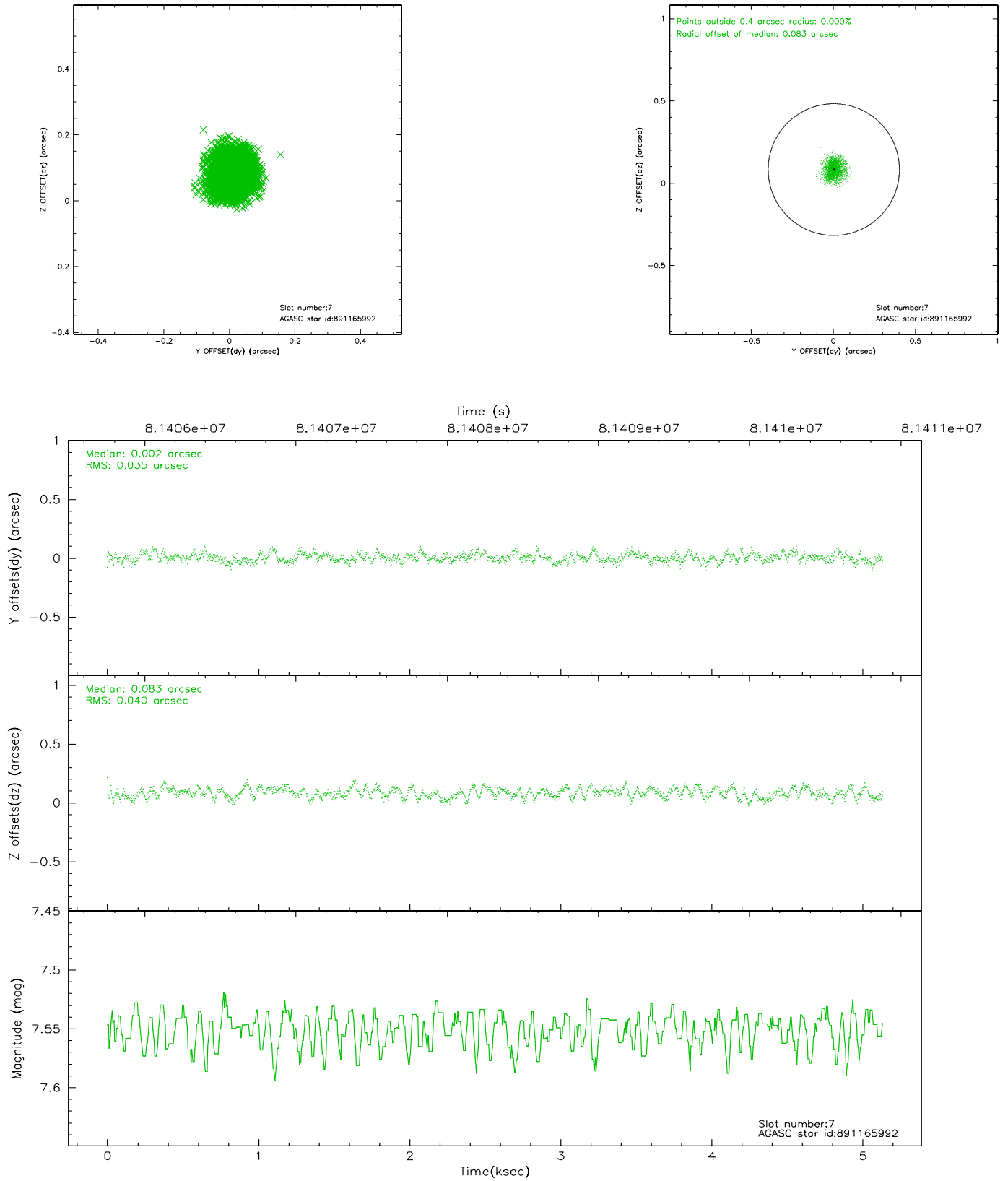
2.4.3 Slot 5



2.4.4 Slot 6

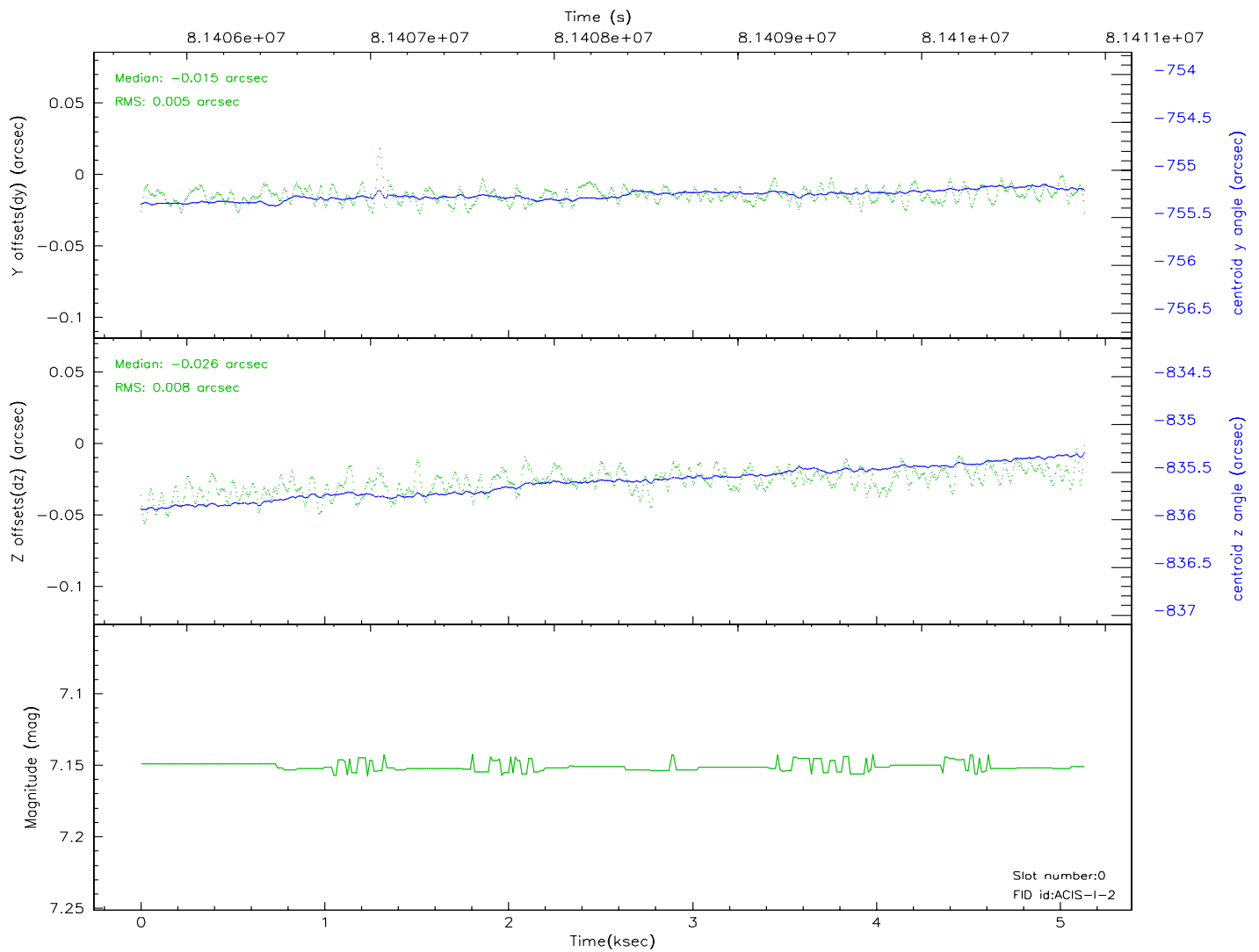
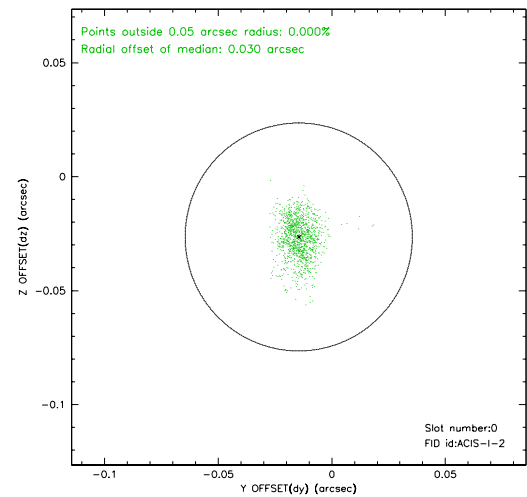
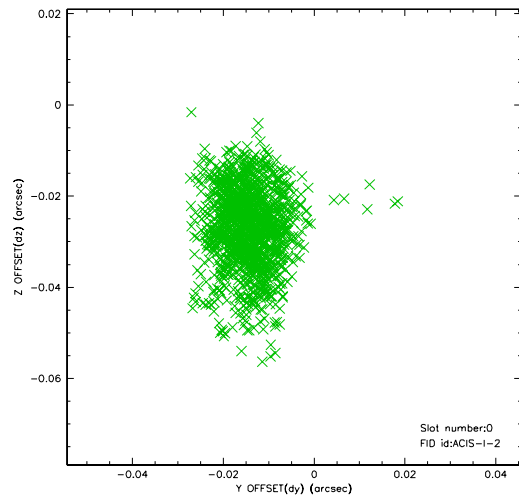


2.4.5 Slot 7

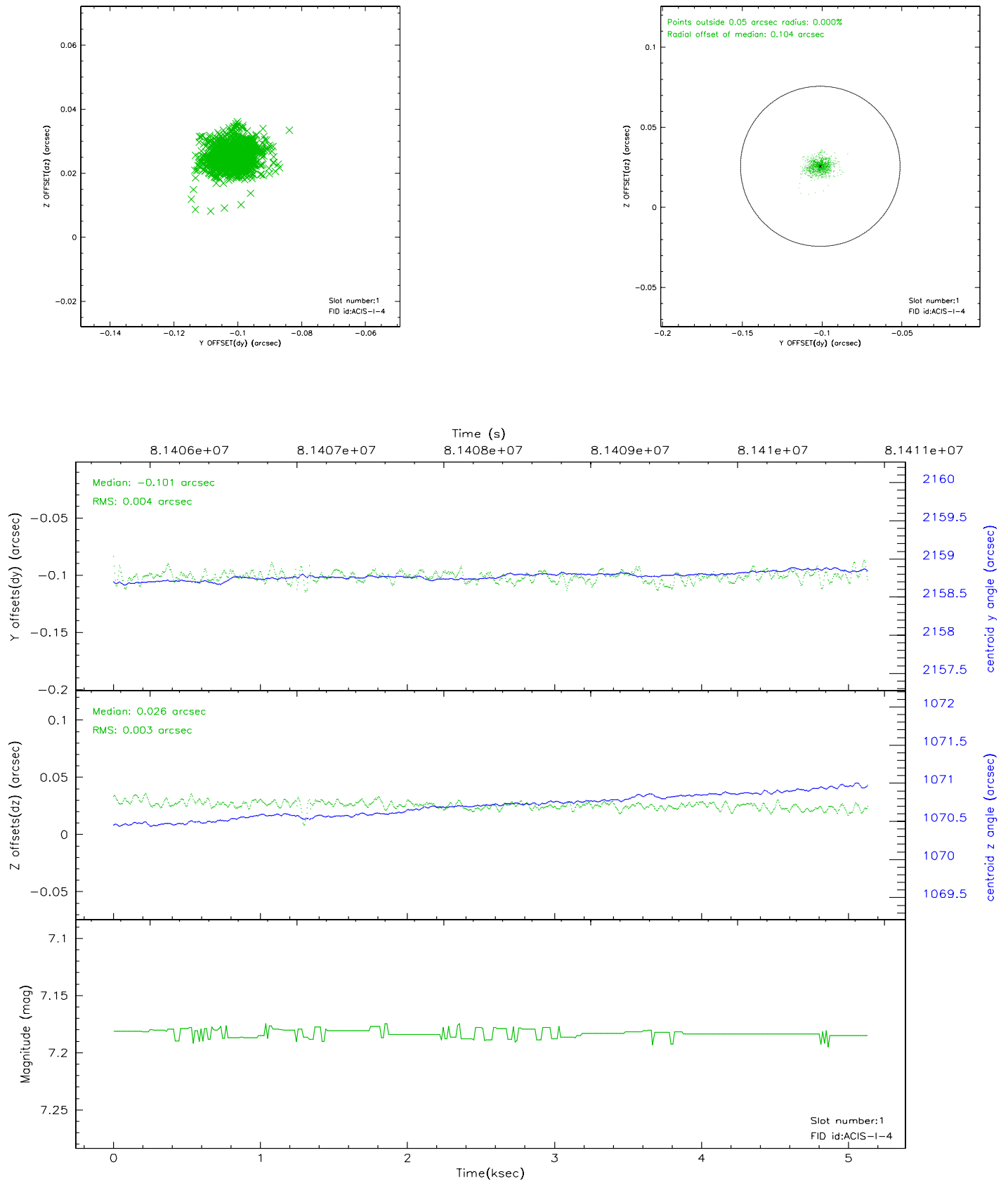


2.5 FID Slots

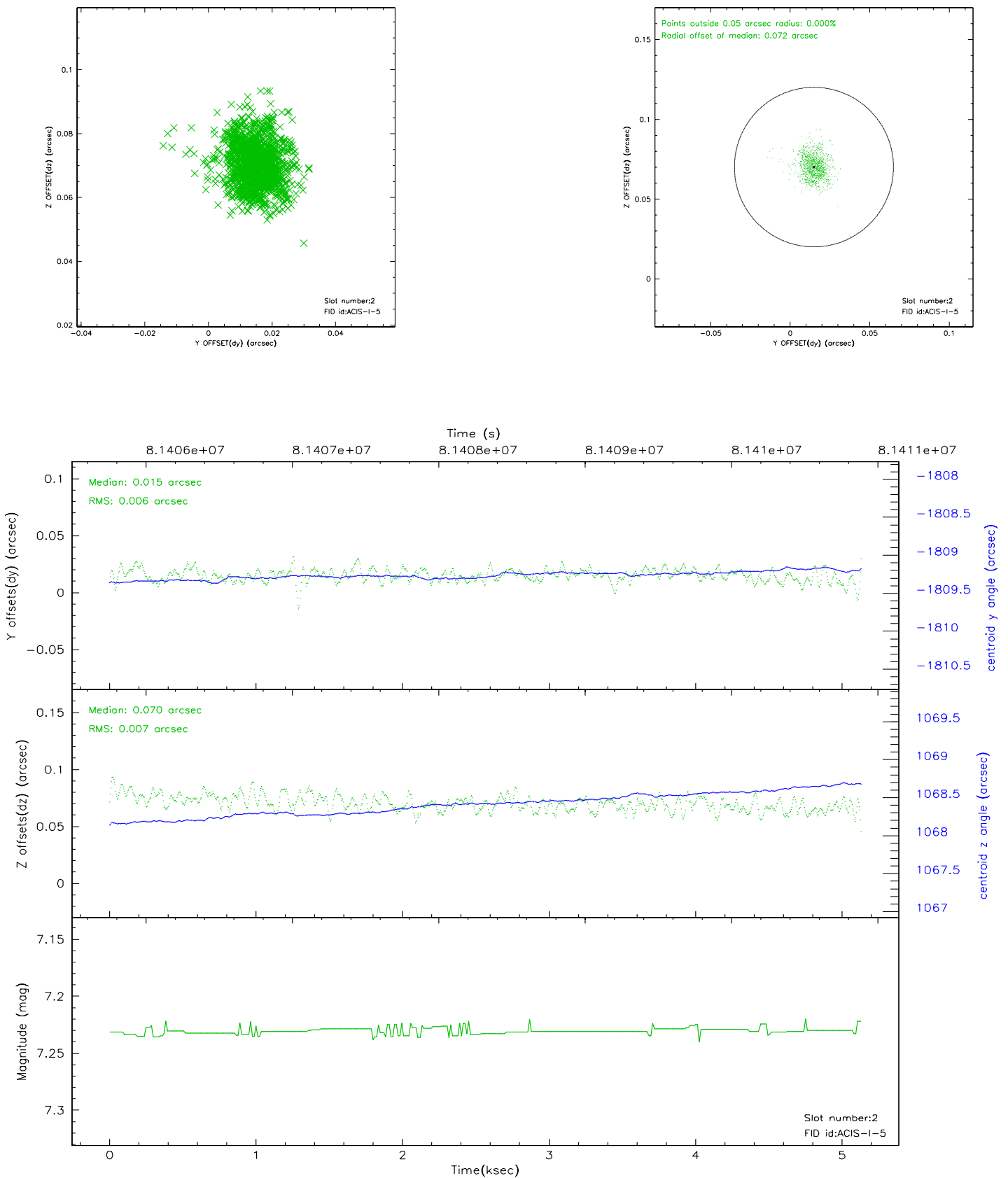
2.5.1 Slot 0



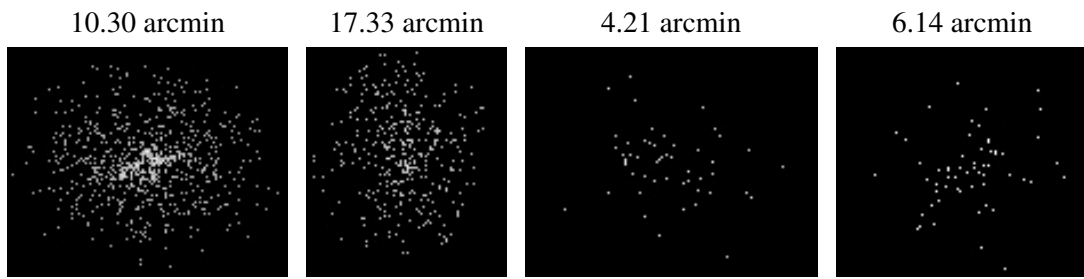
2.5.2 Slot 1



2.5.3 Slot 2



3 Point Sources



A Summary

A.1 Status

V&V Scientist	Beth Sundheim
V&V Date (YYYY-MM-DD)	2007.06.01
V&V Edition	1
V&V Disposition and Status	OK
V&V Charge Time	5.12

A.2 Comments