

V&V Reference Report

L2 ASCDS Version : 8.4.5

Observation 62071 - L2 Version 5
Chandra X-Ray Center

L2 Processing Date : Aug 26 2012

Contents

1	Front	2
2	OBI	3
2.1	OBI	3
2.1.1	Images	3
2.1.2	Bias	3
2.1.3	Parameters	4
2.1.4	Events	4
2.2	Compared Parameters	5
2.3	Star Slots	6
2.4	FID Slots	6
A	Summary	7
A.1	Status	7
A.2	Comments	7

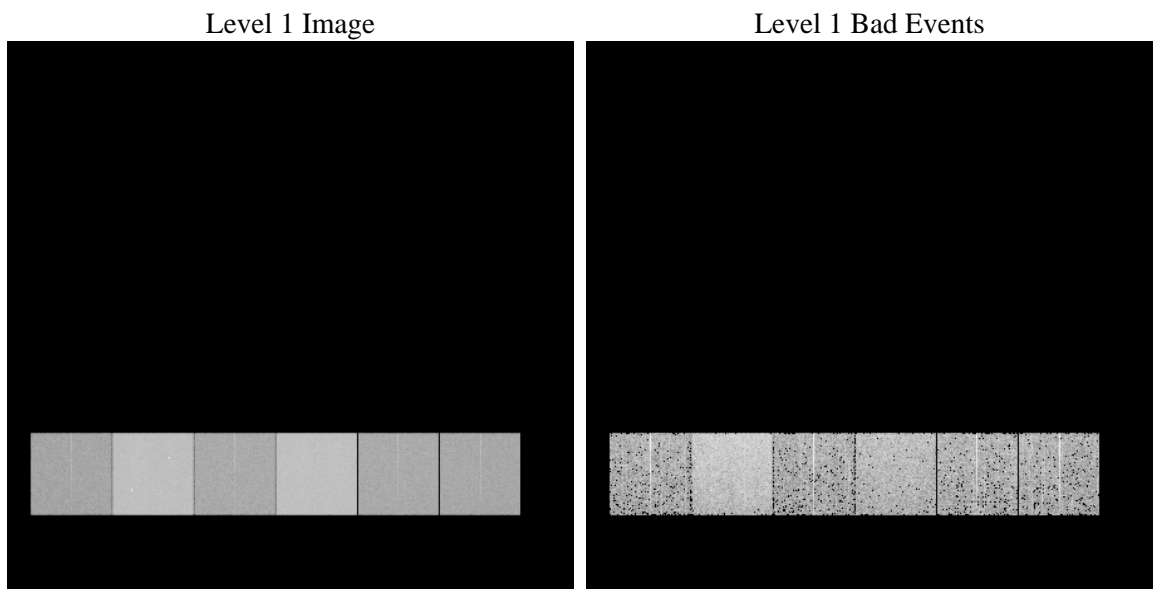
1 Front

seq_num	 	Sequence number
obs_id	62071	Observation id
title	ACIS-456789 diagnostics	Proposal title
observer	CHANDRA engineering request/realtime commanding	Principal investig
object	 	Source name
dtcycle	0	
cycle	P	events from which exps? Prim/Second/Both
ra_targ	0.0	Observer's specified target RA [deg]
dec_targ	0.0	Observer's specified target Dec [deg]
ra_nom	80.05343762601	Nominal RA [deg]
dec_nom	59.989225757523	Nominal Dec [deg]
roll_nom	305.79877979403	Nominal Roll [deg]
revision	5	Processing version of data
ontime	4246.3237009495	Sum of GTIs [s]
livetime	4192.554193419	Livetime [s]
ontime4	1646.4468799829	Sum of GTIs [s]
ontime5	4547.1581600904	Sum of GTIs [s]
ontime6	1851.127185598	Sum of GTIs [s]
ontime7	4246.3237009495	Sum of GTIs [s]
ontime8	1834.4272493273	Sum of GTIs [s]
ontime9	1750.7781157047	Sum of GTIs [s]
l2events	1275942	Number of level 2 events

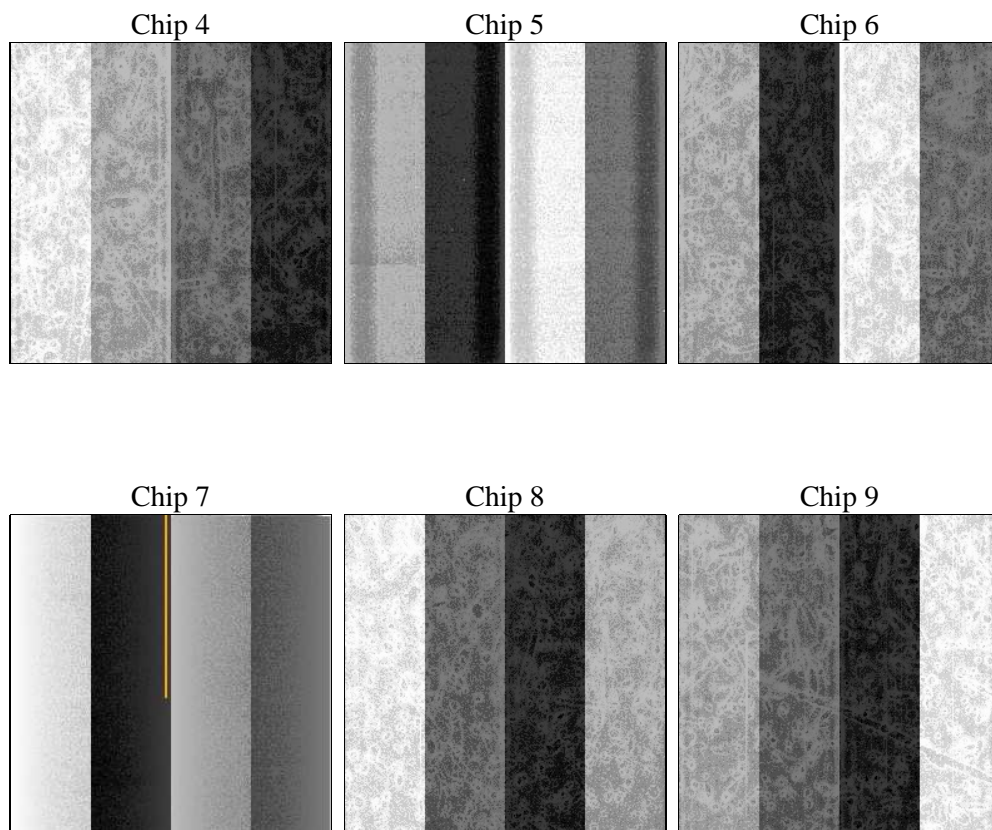
2 OBI

2.1 OBI

2.1.1 Images



2.1.2 Bias



2.1.3 Parameters

obi_num	0	Obi number	sched_exp_time	0.0	[s] Scheduled observation exposure time
ascdsver	8.4.5	Processing system revision	ontime	4246.3237009495	Sum of GTIs [s]
caldbver	4.5.1.1	 	ontime4	1646.4468799829	Sum of GTIs [s]
date	2012-08-26T21:04:18	Date and time of file creation	ontime5	4547.1581600904	Sum of GTIs [s]
revision	5	Processing version of data	ontime6	1851.127185598	Sum of GTIs [s]
			ontime7	4246.3237009495	Sum of GTIs [s]
			ontime8	1834.4272493273	Sum of GTIs [s]
			ontime9	1750.7781157047	Sum of GTIs [s]
			l1events	1461793	Number of level 1 events

2.1.4 Events

	ccd 4	ccd 5	ccd 6	ccd 7	ccd 8	ccd 9		ccd 4	ccd 5	ccd 6	ccd 7	ccd 8	ccd 9
level 1 events	152822	383082	181788	396238	181344	166519	grade 0 events	76512	92604	89673	96745	89562	81727
rejected events	17918	35478	17812	23533	19649	18217		50%	24%	49%	24%	49%	49%
rejected %	11%	9%	9%	5%	10%	10%	grade 1 events	488	312	537	241	490	490
								0%	0%	0%	0%	0%	0%
							grade 2 events	23802	117305	28300	83288	28185	26005
								15%	30%	15%	21%	15%	15%
							grade 3 events	8252	24154	10330	38411	10211	9207
								5%	6%	5%	9%	5%	5%
							grade 4 events	8392	24058	10108	37819	10126	9305
								5%	6%	5%	9%	5%	5%
							grade 5 events	1181	7468	1422	5315	1435	1353
								0%	1%	0%	1%	0%	0%
							grade 6 events	17946	89483	25844	116715	23611	22300
								11%	23%	14%	29%	13%	13%
							grade 7 events	16249	27698	15574	17704	17724	16132
								10%	7%	8%	4%	9%	9%

2.2 Compared Parameters

Parameter	Planned	Actual	Parameter	Planned	Actual
Instrument	ACIS	ACIS	Obspar format version number	7	7
Detector	ACIS-456789	ACIS-456789	Obspar file type	PREDICTED	ACTUAL
Grating	NONE	NONE	Obspar update status	NONE	UPDATED
Data mode	FAINT	FAINT	On-chip summing requested	N	N
Observation mode	SECONDARY	SECONDARY	Subarray requested	NONE	NONE
[deg] Pointing RA	0	80.05343762600965	Alternating exposures requested	N	N
[deg] Pointing Dec	0	59.98922575752319	[s] Primary exposure time	3.2	3.2
[deg] Pointing Roll	0.0	305.7987797940302			
[mm] SIM focus pos	-0.684267	-0.6828225247311905			
[mm] SIM defocus	0	0.8505141146731063			
[mm] SIM translation stage pos	-190.132523	250.466033080201			
[mm] SIM translation stage offset	0	-0.01005468664627074			
[s] Observation start time (MET)	73323653.45687699	73323652.68840601			
Observation start date	2000-04-28T15:40:53	2000-04-28T15:40:52			
[s] Observation end time (MET)	73367474.258486	73367473.490014			
Observation end date	2000-04-29T03:51:14	2000-04-29T03:51:13			
Read mode	TIMED	TIMED			

2.3 Star Slots

2.4 FID Slots

A Summary

A.1 Status

V&V Scientist	Jen Lauer
V&V Date (YYYY-MM-DD)	2012.08.29
V&V Edition	1
V&V Disposition and Status	OK
V&V Charge Time	4.2463237009495

A.2 Comments