

# V&V Reference Report

## L2 ASCDS Version : 8.4.5

Observation 61981 - L2 Version 4  
Chandra X-Ray Center

L2 Processing Date : Aug 30 2012

## Contents

<b>1</b>	<b>Front</b>	<b>2</b>
<b>2</b>	<b>OBI</b>	<b>3</b>
2.1	OBI . . . . .	3
2.1.1	Images . . . . .	3
2.1.2	Bias . . . . .	3
2.1.3	Parameters . . . . .	4
2.1.4	Events . . . . .	4
2.2	Compared Parameters . . . . .	5
2.3	Star Slots . . . . .	6
2.4	FID Slots . . . . .	6
<b>A</b>	<b>Summary</b>	<b>7</b>
A.1	Status . . . . .	7
A.2	Comments . . . . .	7

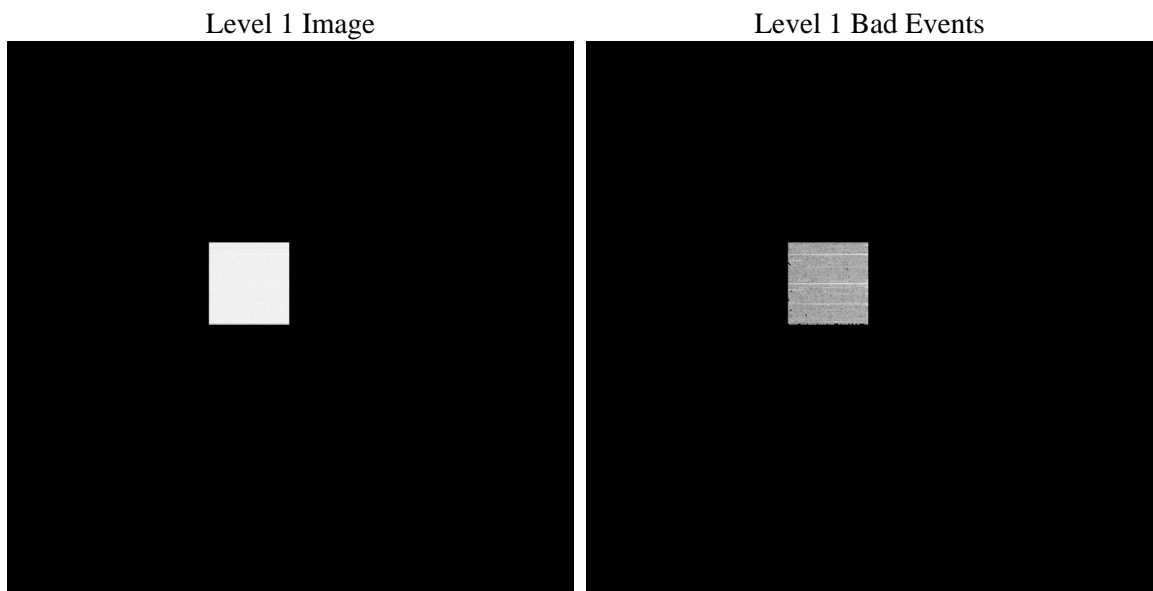
# 1 Front

seq_num	&#160	Sequence number
obs_id	61981	Observation id
title	ACIS-0 diagnostics	Proposal title
observer	CHANDRA engineering request/realtime commanding	Principal investig
object	&#160	Source name
dtcycle	0	&#160
cycle	P	events from which exps? Prim/Second/Both
ra_targ	0.0	Observer's specified target RA [deg]
dec_targ	0.0	Observer's specified target Dec [deg]
ra_nom	171.13727098912	Nominal RA [deg]
dec_nom	-47.917452438298	Nominal Dec [deg]
roll_nom	220.34906496468	Nominal Roll [deg]
revision	4	Processing version of data
ontime	8746.0914947838	Sum of GTIs [s]
livetime	8551.1258259521	Livetime [s]
ontime0	8746.0914947838	Sum of GTIs [s]
l2events	624866	Number of level 2 events

## 2 OBI

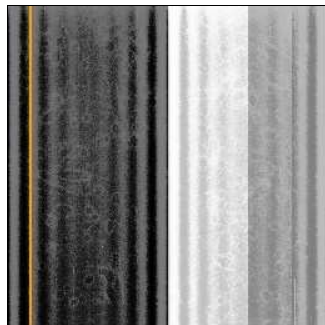
### 2.1 OBI

#### 2.1.1 Images



#### 2.1.2 Bias

Chip 0



### 2.1.3 Parameters

obi_num	0	Obi number	sched_exp_time	0.0	[s] Scheduled observation exposure time
ascdsver	8.4.5	Processing system revision	ontime	8746.0914947838	Sum of GTIs [s]
caldsver	4.5.1.1	&#160	ontime0	8746.0914947838	Sum of GTIs [s]
date	2012-08-30T23:44:21	Date and time of file creation	l1events	716042	Number of level 1 events
revision	4	Processing version of data			

### 2.1.4 Events

	<b>ccd 0</b>
level 1 events	716042
rejected events	40665
rejected %	5%

	<b>ccd 0</b>
grade 0 events	491101
	68%
grade 1 events	2235
	0%
grade 2 events	86076
	12%
grade 3 events	34007
	4%
grade 4 events	33676
	4%
grade 5 events	2589
	0%
grade 6 events	30664
	4%
grade 7 events	35694
	4%

## 2.2 Compared Parameters

Parameter	Planned	Actual	Parameter	Planned	Actual
Instrument	ACIS	ACIS	Obspar format version number	7	7
Detector	ACIS-0	ACIS-0	Obspar file type	PREDICTED	ACTUAL
Grating	NONE	NONE	Obspar update status	NONE	UPDATED
Data mode	FAINT	FAINT	On-chip summing requested	Y	N
Observation mode	SECONDARY	SECONDARY	On-chip row count	2	N/A
[deg] Pointing RA	0	171.1372709891219	On-chip column count	2	N/A
[deg] Pointing Dec	0	-47.91745243829754	Subarray requested	NONE	NONE
[deg] Pointing Roll	0.0	220.349064964679	Alternating exposures requested	N	N
[mm] SIM focus pos	-0.782348	-0.6828225247311905	[s] Primary exposure time	1.8	1.8
[mm] SIM defocus	0	0.8505141146731063			
[mm] SIM translation stage pos	-233.592463	250.4635187648994			
[mm] SIM translation stage offset	0	-0.007540371344731511			
[s] Observation start time (MET)	81321685.70166101	81321684.93319701			
Observation start date	2000-07-30T05:21:26	2000-07-30T05:21:24			
[s] Observation end time (MET)	81365795.55330101	81365794.78483801			
Observation end date	2000-07-30T17:36:36	2000-07-30T17:36:34			
Read mode	TIMED	TIMED			

## **2.3 Star Slots**

## **2.4 FID Slots**

# A Summary

## A.1 Status

V&V Scientist	Jen Lauer
V&V Date (YYYY-MM-DD)	2012.09.05
V&V Edition	1
V&V Disposition and Status	OK
V&V Charge Time	8.7460914947838

## A.2 Comments

Squeegy mode. Bias map unusual with broad stripes in column direction. Exposure was intended to be taken in SUM mode with 2 rows and 2 columns as parameters. However, the observation was taken without onboard summing implemented.