

# V&V Reference Report

## L2 ASCDS Version : 7.6.10

Observation 61981 - L2 Version 001  
Chandra X-Ray Center

L2 Processing Date : Jun 1 2007

## Contents

<b>1</b>	<b>Front</b>	<b>2</b>
<b>2</b>	<b>OBI</b>	<b>3</b>
2.1	OBI . . . . .	3
2.1.1	Images . . . . .	3
2.1.2	Bias . . . . .	3
2.1.3	Parameters . . . . .	4
2.1.4	Events . . . . .	4
2.2	Compared Parameters . . . . .	5
2.3	Star Slots . . . . .	6
2.4	FID Slots . . . . .	6
<b>A</b>	<b>Summary</b>	<b>7</b>
A.1	Status . . . . .	7
A.2	Comments . . . . .	7

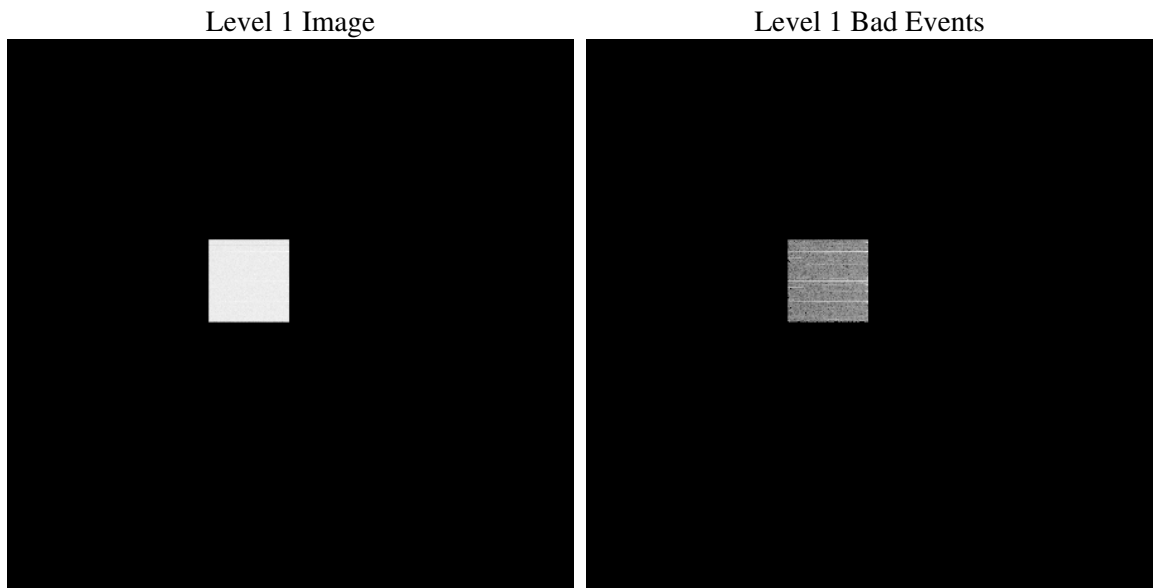
# 1 Front

seq_num	&#160
obs_id	61981
title	ACIS-0 diagnostics
observer	CHANDRA engineering request/realtime commanding
object	&#160
dtcycle	0
cycle	P
ra_targ	0.0
dec_targ	0.0
ra_nom	171.13727098912
dec_nom	-47.917452438298
roll_nom	220.34906496468
revision	3
ontime	8746.1999855191
livetime	8551.2318982392
ontime0	8746.1999855191
l2events	620662

## 2 OBI

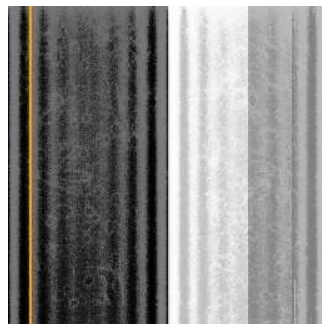
### 2.1 OBI

#### 2.1.1 Images



#### 2.1.2 Bias

Chip 0



### 2.1.3 Parameters

obi_num	0
ascdsver	7.6.10
caldbver	3.4.0
date	2007-06-01T07:57:27
revision	3

sched_exp_time	0.0
ontime	8746.1999855191
ontime0	8746.1999855191
l1events	716042

### 2.1.4 Events

	<b>ccd 0</b>
level 1 events	716042
rejected events	40514
rejected %	5%

	<b>ccd 0</b>
grade 0 events	491151
	68%
grade 1 events	2237
	0%
grade 2 events	86025
	12%
grade 3 events	34009
	4%
grade 4 events	33686
	4%
grade 5 events	2588
	0%
grade 6 events	30657
	4%
grade 7 events	35689
	4%

## 2.2 Compared Parameters

Parameter	Planned	Actual	Parameter	Planned	Actual
Instrument	ACIS	ACIS	Obspar format version number	6	6
Detector	ACIS-0	ACIS-0	Obspar file type	PREDICTED	ACTUAL
Grating	NONE	NONE	Obspar update status	NONE	UPDATED
Data mode	FAINT	FAINT	On-chip summing requested	Y	N
Observation mode	SECONDARY	SECONDARY	On-chip row count	2	N/A
Pointing RA	0	171.1372709891219	On-chip column count	2	N/A
Pointing Dec	0	-47.91745243829754	Subarray requested	NONE	NONE
Pointing Roll	0.0	220.349064964679	Alternating exposures requested	N	N
SIM focus pos (mm)	-0.782348	-0.6828225247311905	Primary exposure time	1.8	1.8
SIM defocus (mm)	0	0.8505141146731063			
SIM translation stage pos (mm)	-233.592463	250.4635187648994			
SIM translation stage offset (mm)	0	-0.007540371344731511			
Observation start time	81321685.70166101	81321684.93319701			
Observation start date	2000-07-30T05:21:26	2000-07-30T05:21:24			
Observation end time	81365795.55330101	81365794.78483801			
Observation end date	2000-07-30T17:36:36	2000-07-30T17:36:34			
Read mode	TIMED	TIMED			

## **2.3 Star Slots**

## **2.4 FID Slots**

# A Summary

## A.1 Status

V&V Scientist	Joy Nichols
V&V Date (YYYY-MM-DD)	2007.07.30
V&V Edition	1
V&V Disposition and Status	OK
V&V Charge Time	8.74619998

## A.2 Comments

Squeegy mode. Bias map unusual with broad stripes in column direction.

Exposure was intended to be taken in SUM mode with 2 rows and 2 columns as parameters. However, the observation was taken without onboard summing implemented.