

V&V Reference Report

L2 ASCDS Version : 8.4.5

Observation 61871 - L2 Version 3
Chandra X-Ray Center

L2 Processing Date : Sep 2 2012

Contents

1	Front	2
2	OBI	3
2.1	OBI	3
2.1.1	Images	3
2.1.2	Bias	3
2.1.3	Parameters	4
2.1.4	Events	4
2.2	Compared Parameters	5
2.3	Star Slots	6
2.4	FID Slots	6
A	Summary	7
A.1	Status	7
A.2	Comments	7

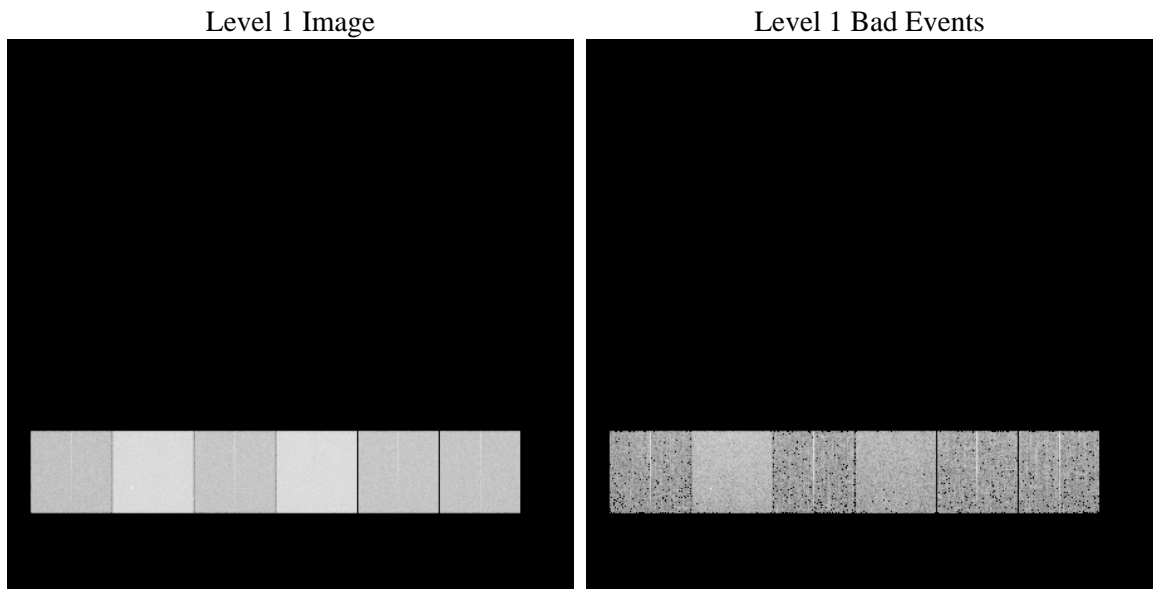
1 Front

seq_num	 	Sequence number
obs_id	61871	Observation id
title	ACIS-456789 diagnostics	Proposal title
observer	CHANDRA engineering request/realtime commanding	Principal investig
object	 	Source name
dtcycle	0	
cycle	P	events from which exps? Prim/Second/Both
ra_targ	0.0	Observer's specified target RA [deg]
dec_targ	0.0	Observer's specified target Dec [deg]
ra_nom	173.01501850359	Nominal RA [deg]
dec_nom	52.02716438758	Nominal Dec [deg]
roll_nom	38.864490165956	Nominal Roll [deg]
revision	3	Processing version of data
ontime	4958.3859284222	Sum of GTIs [s]
livetime	4895.599860215	Livetime [s]
ontime4	1992.9816946983	Sum of GTIs [s]
ontime5	5333.2327671945	Sum of GTIs [s]
ontime6	2174.4387446195	Sum of GTIs [s]
ontime7	4958.3859284222	Sum of GTIs [s]
ontime8	2199.1803866625	Sum of GTIs [s]
ontime9	2124.6364668459	Sum of GTIs [s]
l2events	1340600	Number of level 2 events

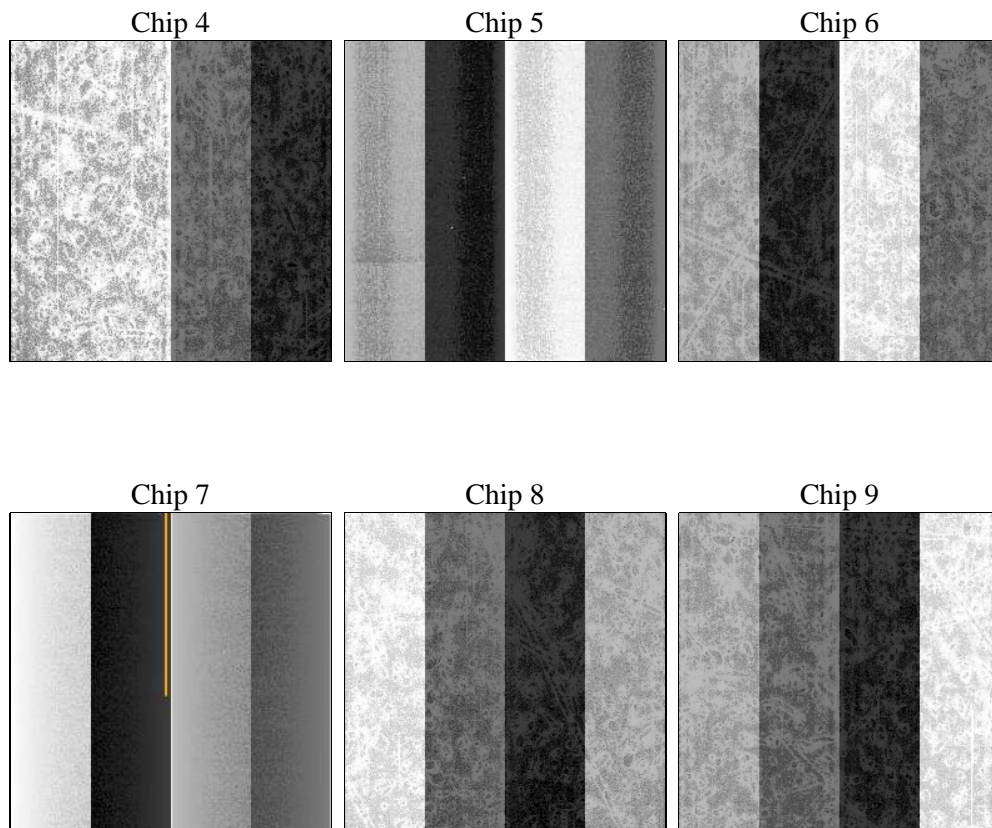
2 OBI

2.1 OBI

2.1.1 Images



2.1.2 Bias



2.1.3 Parameters

obi_num	0	Obi number	sched_exp_time	0.0	[s] Scheduled observation exposure time
ascdsver	8.4.5	Processing system revision	ontime	4958.3859284222	Sum of GTIs [s]
caldsver	4.5.1.1	 	ontime4	1992.9816946983	Sum of GTIs [s]
date	2012-09-03T00:24:06	Date and time of file creation	ontime5	5333.2327671945	Sum of GTIs [s]
revision	3	Processing version of data	ontime6	2174.4387446195	Sum of GTIs [s]
			ontime7	4958.3859284222	Sum of GTIs [s]
			ontime8	2199.1803866625	Sum of GTIs [s]
			ontime9	2124.6364668459	Sum of GTIs [s]
			l1events	1553570	Number of level 1 events

2.1.4 Events

	ccd 4	ccd 5	ccd 6	ccd 7	ccd 8	ccd 9		ccd 4	ccd 5	ccd 6	ccd 7	ccd 8	ccd 9
level 1 events	166212	401396	192424	416039	195113	182386	grade 0 events	82619	86676	95034	100659	95852	89209
rejected events	20267	44175	20266	30021	21652	20661		49%	21%	49%	24%	49%	48%
rejected %	12%	11%	10%	7%	11%	11%	grade 1 events	512	273	537	293	503	446
								0%	0%	0%	0%	0%	0%
							grade 2 events	26041	129596	29752	85402	30769	28766
								15%	32%	15%	20%	15%	15%
							grade 3 events	9071	23375	10510	39732	11068	10264
								5%	5%	5%	9%	5%	5%
							grade 4 events	9149	22797	10670	39117	11045	9956
								5%	5%	5%	9%	5%	5%
							grade 5 events	1225	8235	1426	5928	1590	1498
								0%	2%	0%	1%	0%	0%
							grade 6 events	20012	97310	27463	124060	25728	24718
								12%	24%	14%	29%	13%	13%
							grade 7 events	17583	33134	17032	20848	18558	17529
								10%	8%	8%	5%	9%	9%

2.2 Compared Parameters

Parameter	Planned	Actual	Parameter	Planned	Actual
Instrument	ACIS	ACIS	Obspar format version number	7	7
Detector	ACIS-456789	ACIS-456789	Obspar file type	PREDICTED	ACTUAL
Grating	NONE	NONE	Obspar update status	NONE	UPDATED
Data mode	FAINT	FAINT	On-chip summing requested	N	N
Observation mode	SECONDARY	SECONDARY	Subarray requested	NONE	NONE
[deg] Pointing RA	0	173.0150185035913	Alternating exposures requested	N	N
[deg] Pointing Dec	0	52.02716438757954	[s] Primary exposure time	3.2	3.2
[deg] Pointing Roll	0.0	38.86449016595564			
[mm] SIM focus pos	-0.684267	-1.428180813131781			
[mm] SIM defocus	0	0.1051558262725154			
[mm] SIM translation stage pos	-190.132523	250.466033080201			
[mm] SIM translation stage offset	0	-0.01005468664627074			
[s] Observation start time (MET)	88906737.236691	88906736.468207			
Observation start date	2000-10-26T00:18:57	2000-10-26T00:18:56			
[s] Observation end time (MET)	88917245.53708901	88917244.768604			
Observation end date	2000-10-26T03:14:06	2000-10-26T03:14:04			
Read mode	TIMED	TIMED			

2.3 Star Slots

2.4 FID Slots

A Summary

A.1 Status

V&V Scientist	Jen Lauer
V&V Date (YYYY-MM-DD)	2012.09.10
V&V Edition	1
V&V Disposition and Status	OK
V&V Charge Time	4.9583859284222

A.2 Comments