

V&V Reference Report

L2 ASCDS Version : 8.4.5

Observation 61771 - L2 Version 4
Chandra X-Ray Center

L2 Processing Date : Sep 7 2012

Contents

| | | |
|----------|-------------------------------|----------|
| 1 | Front | 2 |
| 2 | OBI | 3 |
| 2.1 | OBI | 3 |
| 2.1.1 | Images | 3 |
| 2.1.2 | Bias | 3 |
| 2.1.3 | Parameters | 4 |
| 2.1.4 | Events | 4 |
| 2.2 | Compared Parameters | 5 |
| 2.3 | Star Slots | 6 |
| 2.4 | FID Slots | 6 |
| A | Summary | 7 |
| A.1 | Status | 7 |
| A.2 | Comments | 7 |

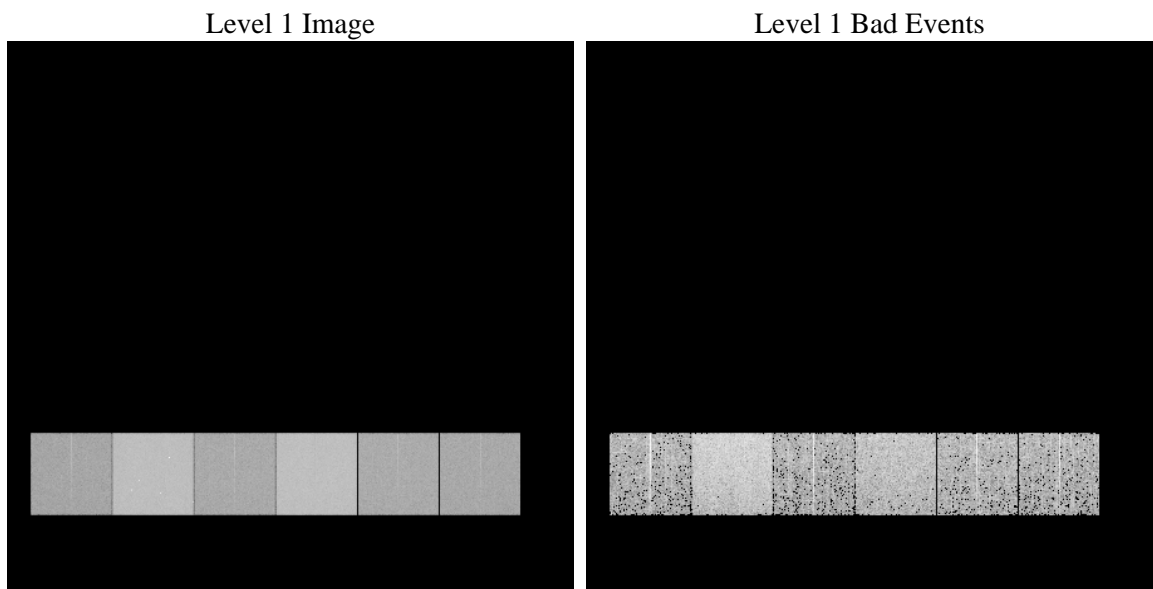
1 Front

| | | |
|----------|---|---|
| seq_num | | Sequence number |
| obs_id | 61771 | Observation id |
| title | ACIS-456789 diagnostics | Proposal title |
| observer | CHANDRA engineering request/realtime commanding | Principal investig |
| object | | Source name |
| dtcycle | 0 | |
| cycle | P | events from which exps? Prim/Second/Both |
| ra_targ | 0.0 | Observer's specified target RA [deg] |
| dec_targ | 0.0 | Observer's specified target Dec [deg] |
| ra_nom | 334.02919793177 | Nominal RA [deg] |
| dec_nom | 14.994360076531 | Nominal Dec [deg] |
| roll_nom | 316.06957544086 | Nominal Roll [deg] |
| revision | 4 | Processing version of data |
| ontime | 4861.5165043622 | Sum of GTIs [s] |
| livetime | 4799.9570551302 | Livetime [s] |
| ontime4 | 2021.6099559069 | Sum of GTIs [s] |
| ontime5 | 5201.8170200586 | Sum of GTIs [s] |
| ontime6 | 2186.8619654626 | Sum of GTIs [s] |
| ontime7 | 4861.5165043622 | Sum of GTIs [s] |
| ontime8 | 2275.1944659948 | Sum of GTIs [s] |
| ontime9 | 2154.3283658028 | Sum of GTIs [s] |
| l2events | 1244463 | Number of level 2 events |

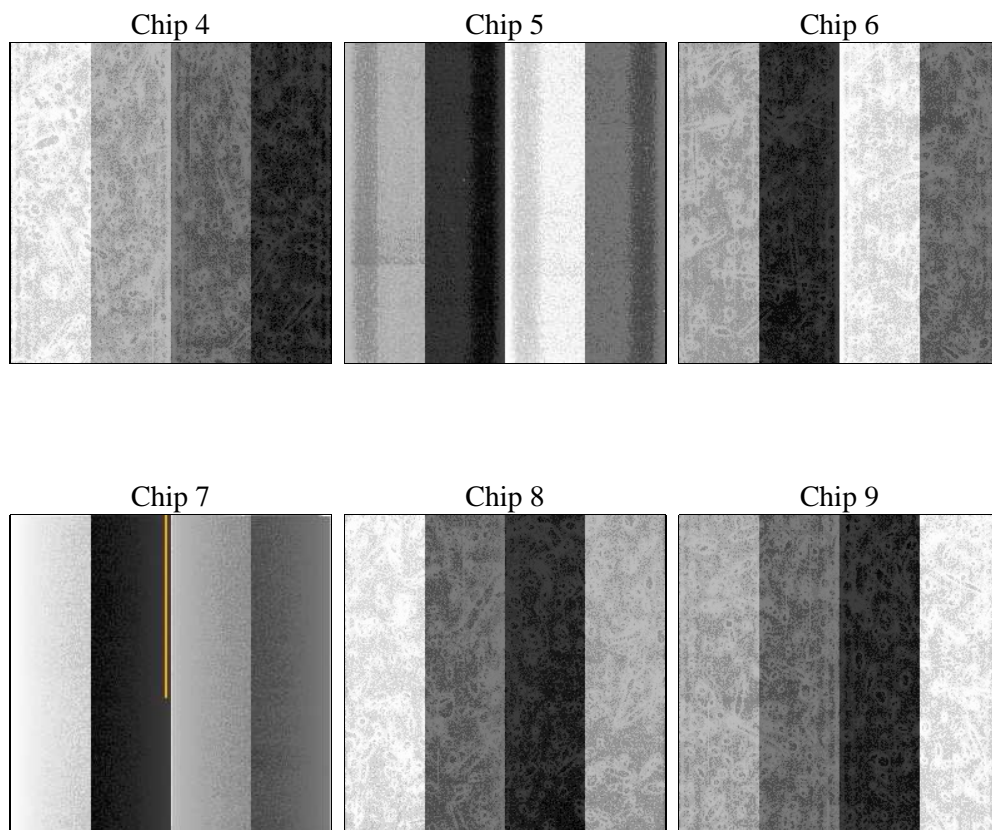
2 OBI

2.1 OBI

2.1.1 Images



2.1.2 Bias



2.1.3 Parameters

| | | | | | |
|----------|---------------------|--------------------------------|----------------|-----------------|---|
| obi_num | 1 | Obi number | sched_exp_time | 0.0 | [s] Scheduled observation exposure time |
| ascdsver | 8.4.5 | Processing system revision | ontime | 4861.5165043622 | Sum of GTIs [s] |
| caldbver | 4.5.1.1 | | ontime4 | 2021.6099559069 | Sum of GTIs [s] |
| date | 2012-09-07T03:10:13 | Date and time of file creation | ontime5 | 5201.8170200586 | Sum of GTIs [s] |
| revision | 4 | Processing version of data | ontime6 | 2186.8619654626 | Sum of GTIs [s] |
| | | | ontime7 | 4861.5165043622 | Sum of GTIs [s] |
| | | | ontime8 | 2275.1944659948 | Sum of GTIs [s] |
| | | | ontime9 | 2154.3283658028 | Sum of GTIs [s] |
| | | | l1events | 1429681 | Number of level 1 events |

2.1.4 Events

| | ccd 4 | ccd 5 | ccd 6 | ccd 7 | ccd 8 | ccd 9 | | ccd 4 | ccd 5 | ccd 6 | ccd 7 | ccd 8 | ccd 9 |
|-----------------|--------|--------|--------|--------|--------|--------|----------------|-------|--------|-------|--------|-------|-------|
| level 1 events | 155262 | 364705 | 178394 | 375225 | 186046 | 170049 | grade 0 events | 78269 | 88334 | 88379 | 90906 | 93164 | 84241 |
| rejected events | 17356 | 35547 | 16412 | 24132 | 18800 | 17134 | | 50% | 24% | 49% | 24% | 50% | 49% |
| rejected % | 11% | 9% | 9% | 6% | 10% | 10% | grade 1 events | 456 | 258 | 394 | 215 | 459 | 446 |
| | | | | | | | | 0% | 0% | 0% | 0% | 0% | 0% |
| | | | | | | | grade 2 events | 24390 | 110881 | 28274 | 78463 | 29119 | 26949 |
| | | | | | | | | 15% | 30% | 15% | 20% | 15% | 15% |
| | | | | | | | grade 3 events | 8555 | 22914 | 9970 | 36415 | 10425 | 9516 |
| | | | | | | | | 5% | 6% | 5% | 9% | 5% | 5% |
| | | | | | | | grade 4 events | 8343 | 22709 | 10041 | 35744 | 10547 | 9448 |
| | | | | | | | | 5% | 6% | 5% | 9% | 5% | 5% |
| | | | | | | | grade 5 events | 1167 | 7309 | 1366 | 5159 | 1456 | 1266 |
| | | | | | | | | 0% | 2% | 0% | 1% | 0% | 0% |
| | | | | | | | grade 6 events | 18349 | 84526 | 25318 | 109820 | 24231 | 22761 |
| | | | | | | | | 11% | 23% | 14% | 29% | 13% | 13% |
| | | | | | | | grade 7 events | 15733 | 27774 | 14652 | 18503 | 16645 | 15422 |
| | | | | | | | | 10% | 7% | 8% | 4% | 8% | 9% |

2.2 Compared Parameters

| Parameter | Planned | Actual | Parameter | Planned | Actual |
|-----------------------------------|---------------------|----------------------|---------------------------------|-----------|---------|
| Instrument | ACIS | ACIS | Obspar format version number | 7 | 7 |
| Detector | ACIS-456789 | ACIS-456789 | Obspar file type | PREDICTED | ACTUAL |
| Grating | NONE | NONE | Obspar update status | NONE | UPDATED |
| Data mode | FAINT | FAINT | On-chip summing requested | N | N |
| Observation mode | SECONDARY | SECONDARY | Subarray requested | NONE | NONE |
| [deg] Pointing RA | 0 | 334.0291979317715 | Alternating exposures requested | N | N |
| [deg] Pointing Dec | 0 | 14.99436007653113 | [s] Primary exposure time | 0.000000 | 3.2 |
| [deg] Pointing Roll | 0.0 | 316.0695754408567 | | | |
| [mm] SIM focus pos | -0.684267 | -0.6828225247311905 | | | |
| [mm] SIM defocus | 0 | 0.8505141146731063 | | | |
| [mm] SIM translation stage pos | -190.132523 | 250.466033080201 | | | |
| [mm] SIM translation stage offset | 0 | -0.01005468664627074 | | | |
| [s] Observation start time (MET) | 96171388.11399999 | 96171387.34543601 | | | |
| Observation start date | 2001-01-18T02:16:28 | 2001-01-18T02:16:27 | | | |
| [s] Observation end time (MET) | 96183321.164 | 96183320.39589401 | | | |
| Observation end date | 2001-01-18T05:35:21 | 2001-01-18T05:35:20 | | | |
| Read mode | TIMED | TIMED | | | |

2.3 Star Slots

2.4 FID Slots

A Summary

A.1 Status

| | |
|----------------------------|-----------------|
| V&V Scientist | Jen Lauer |
| V&V Date (YYYY-MM-DD) | 2012.09.17 |
| V&V Edition | 1 |
| V&V Disposition and Status | OK |
| V&V Charge Time | 4.8615165043622 |

A.2 Comments