

V&V Reference Report

L2 ASCDS Version : 7.6.9

Observation 61771 - L2 Version 001
Chandra X-Ray Center

L2 Processing Date : Nov 4 2006

Contents

1	Front	2
2	OBI	3
2.1	OBI	3
2.1.1	Images	3
2.1.2	Bias	3
2.1.3	Parameters	4
2.1.4	Events	4
2.2	Compared Parameters	5
2.3	Aspect	6
2.4	Star Slots	8
2.5	FID Slots	8
A	Summary	9
A.1	Status	9
A.2	Comments	9

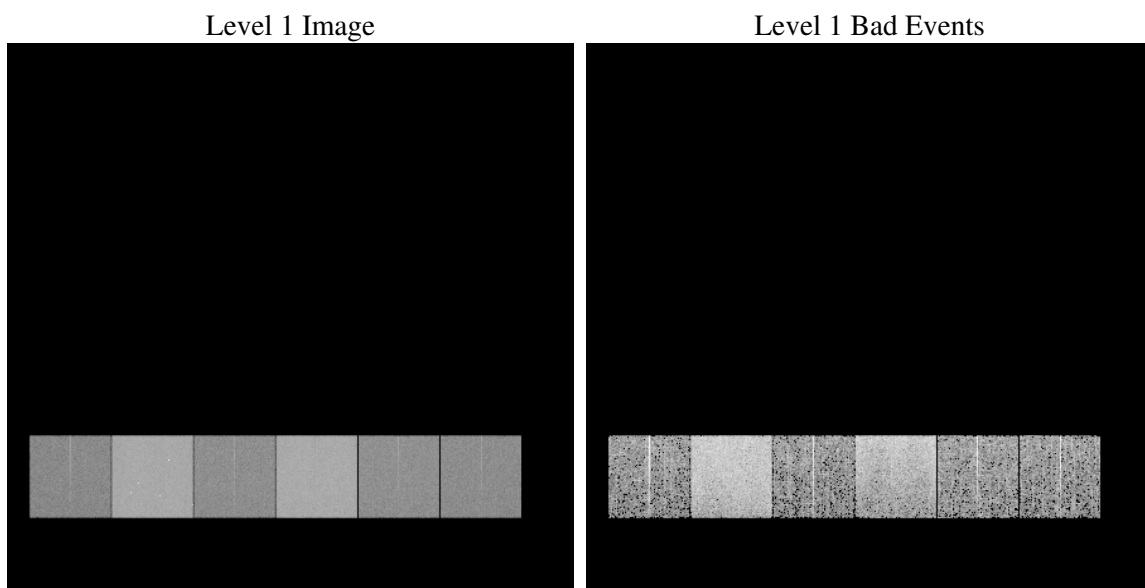
1 Front

seq_num	
obs_id	61771
title	ACIS-456789 diagnostics
observer	CHANDRA engineering request/realtime commanding
object	
dtcycle	0
cycle	P
ra_targ	0.0
dec_targ	0.0
ra_nom	334.02919793177
dec_nom	14.994360076531
roll_nom	316.06957544086
revision	3
ontime	4861.5165043771
livetime	4799.9570551449
ontime4	2020.0099559128
ontime5	5201.8170200735
ontime6	2185.2619654685
ontime7	4861.5165043771
ontime8	2275.1944660097
ontime9	2152.7283658087
l2events	1224767

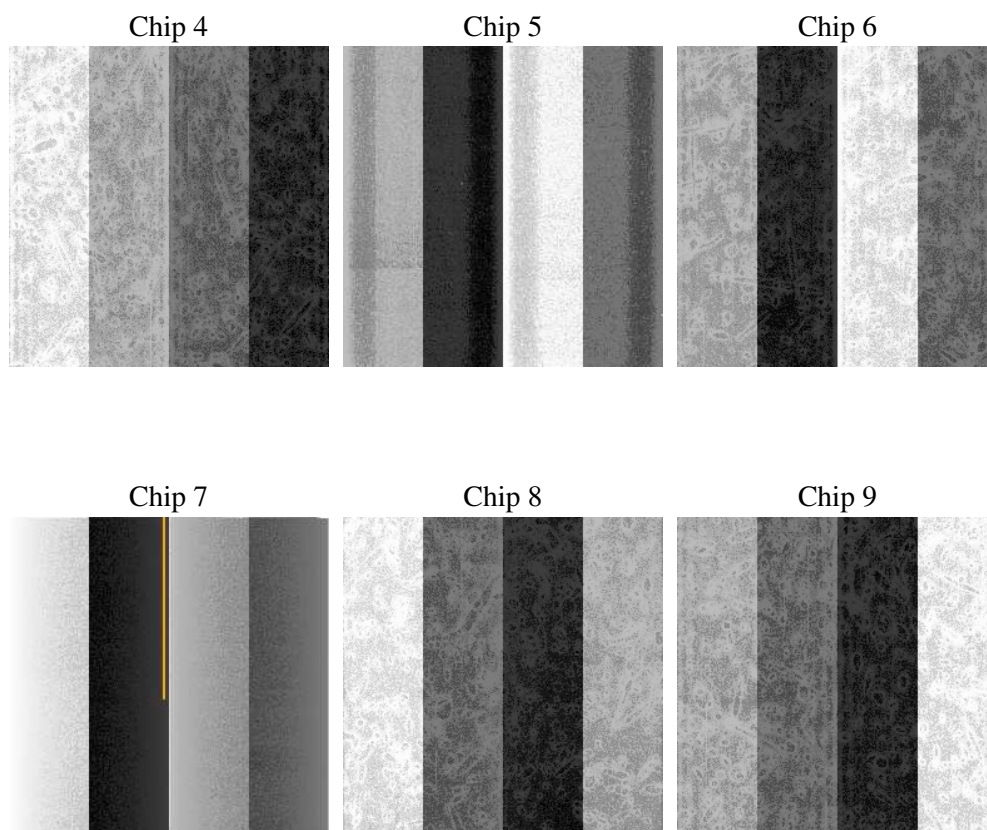
2 OBI

2.1 OBI

2.1.1 Images



2.1.2 Bias



2.1.3 Parameters

obi_num	1
ascdsver	7.6.9
caldsver	3.2.3
date	2006-11-04T07:57:12
revision	3

sched_exp_time	0.0
ontime	4864.7710688859
ontime4	2022.4070107788
ontime5	5205.0715845823
ontime6	2187.7000603378
ontime7	4864.7710688859
ontime8	2278.4490305185
ontime9	2155.289580673
l1events	1429681

2.1.4 Events

	ccd 4	ccd 5	ccd 6	ccd 7	ccd 8	ccd 9
level 1 events	155262	364705	178394	375225	186046	170049
rejected events	17605	45146	16675	33983	18787	17365
rejected %	11%	12%	9%	9%	10%	10%

	ccd 4	ccd 5	ccd 6	ccd 7	ccd 8	ccd 9
grade 0 events	78272	45778	88380	67038	93167	84242
	50%	12%	49%	17%	50%	49%
grade 1 events	456	117	394	138	459	446
	0%	0%	0%	0%	0%	0%
grade 2 events	24387	149895	28273	100413	29116	26948
	15%	41%	15%	26%	15%	15%
grade 3 events	8556	12205	9970	27181	10427	9516
	5%	3%	5%	7%	5%	5%
grade 4 events	8345	12102	10041	26424	10547	9448
	5%	3%	5%	7%	5%	5%
grade 5 events	1166	5742	1366	4967	1456	1267
	0%	1%	0%	1%	0%	0%
grade 6 events	18347	99790	25319	120399	24229	22760
	11%	27%	14%	32%	13%	13%
grade 7 events	15733	39076	14651	28665	16645	15422
	10%	10%	8%	7%	8%	9%

2.2 Compared Parameters

Parameter	Planned	Actual	Parameter	Planned	Actual
Instrument	ACIS	ACIS	Obspar format version number	6	6
Detector	ACIS-456789	ACIS-456789	Obspar file type	PREDICTED	ACTUAL
Grating	NONE	NONE	Obspar update status	NONE	UPDATED
Data mode	FAINT	FAINT	On-chip summing requested	N	N
Observation mode	SECONDARY	SECONDARY	Subarray requested	NONE	NONE
Pointing RA	0	334.029197931772	Alternating exposures requested	N	N
Pointing Dec	0	14.9943600765309	Primary exposure time	0.000000	3.2
Pointing Roll	0.0	316.0695754408564			
SIM focus pos (mm)	-0.684267	-0.6828225247311905			
SIM defocus (mm)	0	0.8505141146731063			
SIM translation stage pos (mm)	-190.132523	250.466033080201			
SIM translation stage offset (mm)	0	-0.01005468664627074			
Observation start time	96171388.11399999	96171387.34543601			
Observation start date	2001-01-18T02:16:28	2001-01-18T02:16:27			
Observation end time	96183321.164	96183320.39589401			
Observation end date	2001-01-18T05:35:21	2001-01-18T05:35:20			
Read mode	TIMED	TIMED			

2.3 Aspect

2.4 Star Slots

2.5 FID Slots

A Summary

A.1 Status

V&V Scientist	Jen Lauer
V&V Date (YYYY-MM-DD)	2006.11.06
V&V Edition	1
V&V Disposition and Status	OK
V&V Charge Time	4.8615165

A.2 Comments