

V&V Reference Report

L2 ASCDS Version : 7.6.9

Observation 61761 - L2 Version 001
Chandra X-Ray Center

L2 Processing Date : Nov 4 2006

Contents

1	Front	2
2	OBI	3
2.1	OBI	3
2.1.1	Images	3
2.1.2	Bias	3
2.1.3	Parameters	4
2.1.4	Events	4
2.2	Compared Parameters	5
2.3	Aspect	6
2.4	Star Slots	8
2.5	FID Slots	8
A	Summary	9
A.1	Status	9
A.2	Comments	9

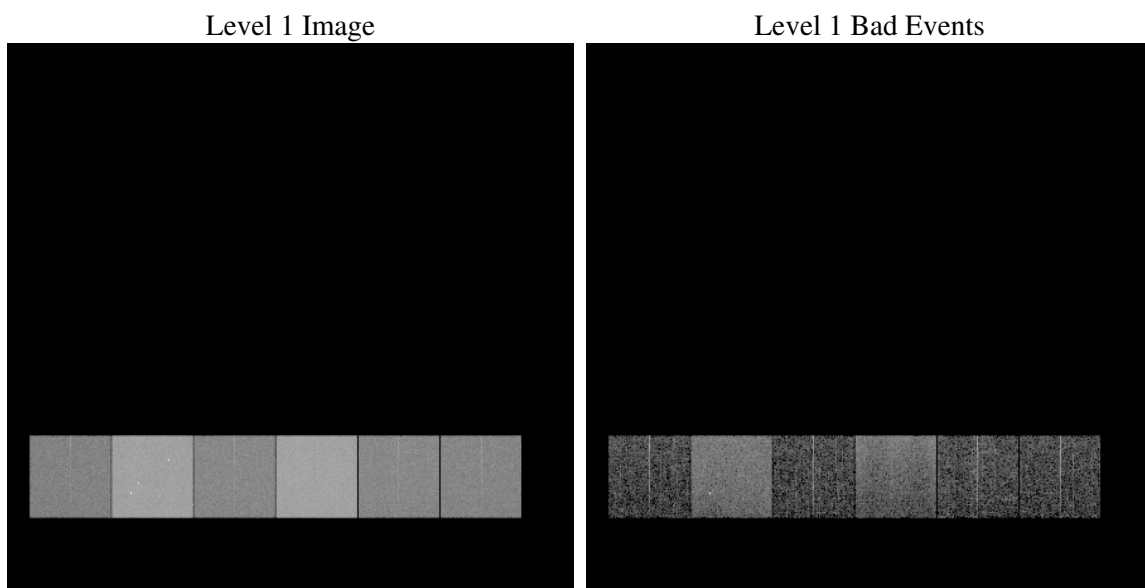
1 Front

seq_num	
obs_id	61761
title	ACIS-456789 diagnostics
observer	CHANDRA engineering request/realtime commanding
object	
dtcycle	0
cycle	P
ra_targ	0.0
dec_targ	0.0
ra_nom	340.03150950615
dec_nom	24.997310899279
roll_nom	322.0141638561
revision	3
ontime	4899.5457502007
livetime	4837.5047517594
ontime4	2041.1017965376
ontime5	5226.9240730107
ontime6	2248.4871564955
ontime7	4899.5457502007
ontime8	2232.3639667034
ontime9	2170.5790866315
l2events	1227966

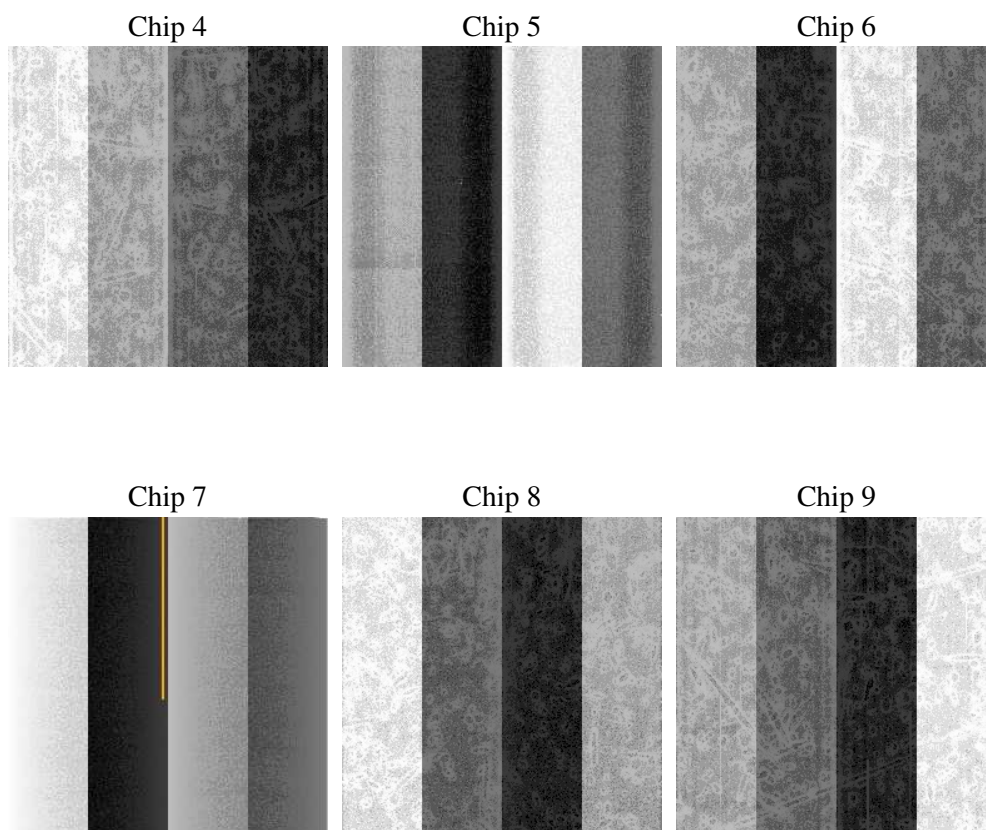
2 OBI

2.1 OBI

2.1.1 Images



2.1.2 Bias



2.1.3 Parameters

obi_num	0
ascdsver	7.6.9
caldsver	3.2.3
date	2006-11-04T13:27:15
revision	3

sched_exp_time	0.0
ontime	4900.4203142077
ontime4	2041.8532405496
ontime5	5227.7575970143
ontime6	2249.2796405107
ontime7	4900.4203142077
ontime8	2233.074370712
ontime9	2171.4946906418
l1events	1429471

2.1.4 Events

	ccd 4	ccd 5	ccd 6	ccd 7	ccd 8	ccd 9
level 1 events	155307	364211	182411	375116	182804	169622
rejected events	16037	45408	16273	33456	18499	16195
rejected %	10%	12%	8%	8%	10%	9%

	ccd 4	ccd 5	ccd 6	ccd 7	ccd 8	ccd 9
grade 0 events	78850	42408	91327	66300	90966	84313
	50%	11%	50%	17%	49%	49%
grade 1 events	413	483	456	155	439	399
	0%	0%	0%	0%	0%	0%
grade 2 events	24524	152514	28761	100618	28894	26896
	15%	41%	15%	26%	15%	15%
grade 3 events	8700	11438	10474	26679	10180	9434
	5%	3%	5%	7%	5%	5%
grade 4 events	8482	11398	10068	26349	10266	9478
	5%	3%	5%	7%	5%	5%
grade 5 events	1101	5744	1381	5197	1453	1336
	0%	1%	0%	1%	0%	0%
grade 6 events	18714	101045	25508	121714	23999	23306
	12%	27%	13%	32%	13%	13%
grade 7 events	14523	39181	14436	28104	16607	14460
	9%	10%	7%	7%	9%	8%

2.2 Compared Parameters

Parameter	Planned	Actual	Parameter	Planned	Actual
Instrument	ACIS	ACIS	Obspar format version number	6	6
Detector	ACIS-456789	ACIS-456789	Obspar file type	PREDICTED	ACTUAL
Grating	NONE	NONE	Obspar update status	NONE	UPDATED
Data mode	FAINT	FAINT	On-chip summing requested	N	N
Observation mode	SECONDARY	SECONDARY	Subarray requested	NONE	NONE
Pointing RA	0	340.0315095061508	Alternating exposures requested	N	N
Pointing Dec	0	24.99731089927863	Primary exposure time	3.2	3.2
Pointing Roll	0.0	322.014163856105			
SIM focus pos (mm)	-0.684267	-0.7809083437167272			
SIM defocus (mm)	0	0.7524282956875696			
SIM translation stage pos (mm)	-190.132523	250.466033080201			
SIM translation stage offset (mm)	0	-0.01005468664627074			
Observation start time	96856576.040243	96856575.271779			
Observation start date	2001-01-26T00:36:16	2001-01-26T00:36:15			
Observation end time	96868709.99070799	96868709.22224601			
Observation end date	2001-01-26T03:58:30	2001-01-26T03:58:29			
Read mode	TIMED	TIMED			

2.3 Aspect

2.4 Star Slots

2.5 FID Slots

A Summary

A.1 Status

V&V Scientist	Jen Lauer
V&V Date (YYYY-MM-DD)	2006.11.06
V&V Edition	1
V&V Disposition and Status	OK
V&V Charge Time	4.89954575

A.2 Comments