

V&V Reference Report

L2 ASCDS Version : 7.6.9

Observation 61681 - L2 Version 001
Chandra X-Ray Center

L2 Processing Date : Nov 13 2006

Contents

1	Front	2
2	OBI	3
2.1	OBI	3
2.1.1	Images	3
2.1.2	Bias	3
2.1.3	Parameters	4
2.1.4	Events	4
2.2	Compared Parameters	5
2.3	Aspect	6
2.4	Star Slots	8
2.5	FID Slots	8
A	Summary	9
A.1	Status	9
A.2	Comments	9

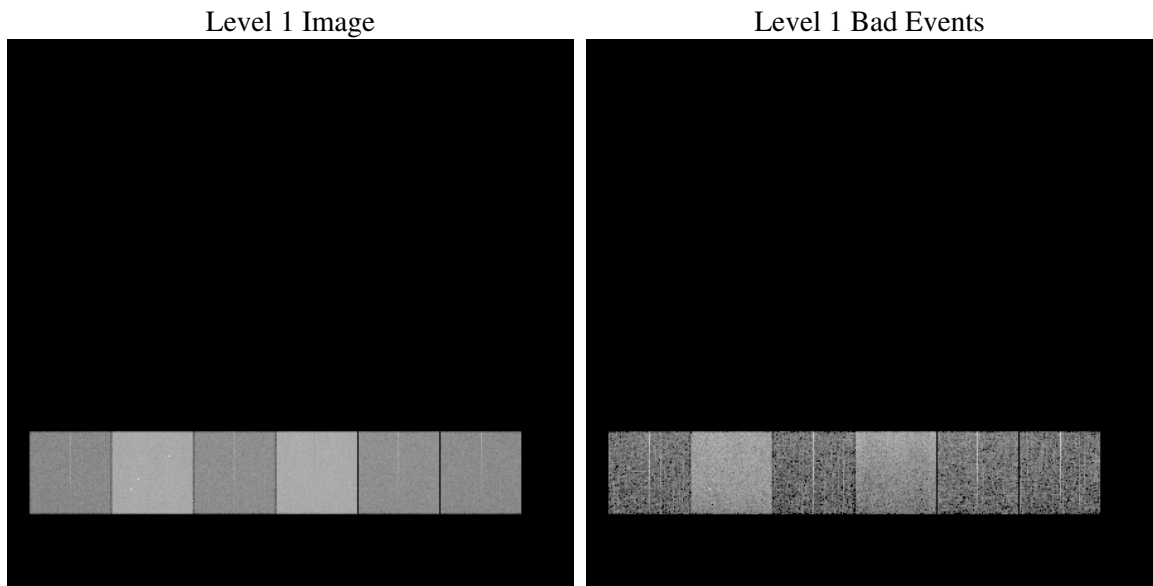
1 Front

seq_num	
obs_id	61681
title	ACIS-456789 diagnostics
observer	CHANDRA engineering request/realtime commanding
object	
dtcycle	0
cycle	P
ra_targ	0.0
dec_targ	0.0
ra_nom	177.98433037395
dec_nom	19.975423775148
roll_nom	206.46888639164
revision	2
ontime	5528.5061113089
livetime	5458.5008380608
ontime4	2193.5127521902
ontime5	5940.1082320958
ontime6	2387.5763184279
ontime7	5528.5061113089
ontime8	2439.5152176917
ontime9	2277.7797321379
l2events	1298253

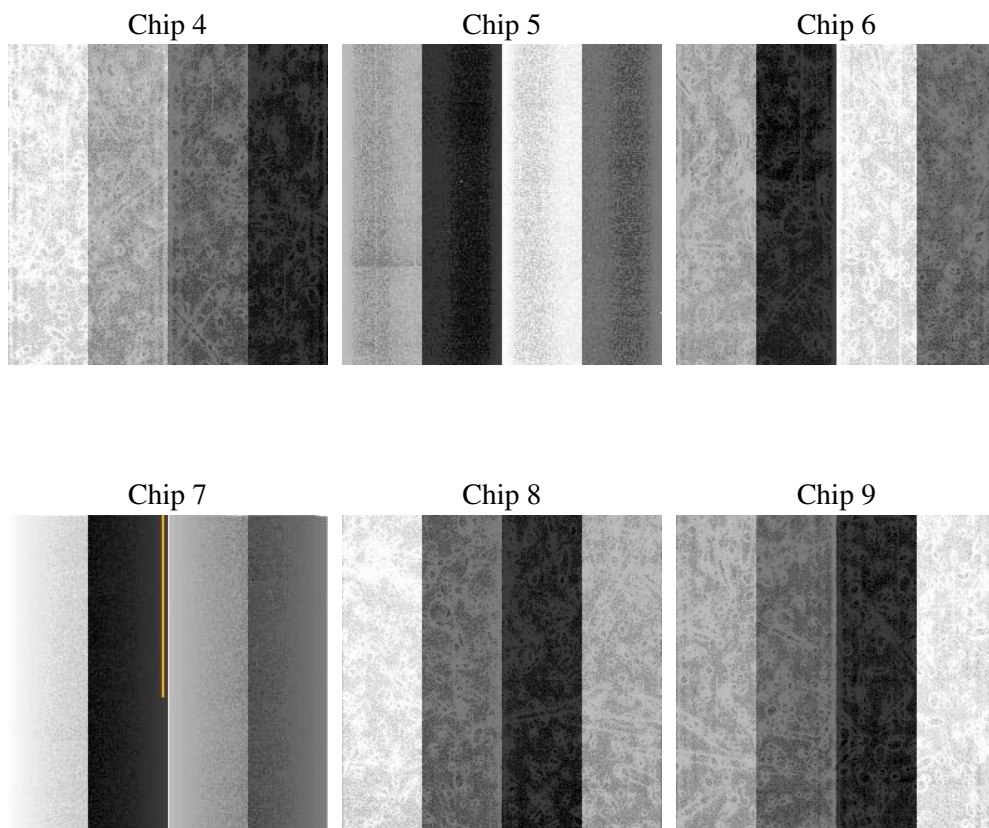
2 OBI

2.1 OBI

2.1.1 Images



2.1.2 Bias



2.1.3 Parameters

obi_num	0
ascdsver	7.6.9
caldsver	3.2.4
date	2006-11-13T13:43:02
revision	2

sched_exp_time	0.0
ontime	5551.862739414
ontime4	2207.146359995
ontime5	5969.9468305558
ontime6	2398.3674005121
ontime7	5551.862739414
ontime8	2453.4652597606
ontime9	2288.1722999513
l1events	1535536

2.1.4 Events

	ccd 4	ccd 5	ccd 6	ccd 7	ccd 8	ccd 9
level 1 events	163068	402254	188362	413984	194141	173727
rejected events	20418	54997	19510	42225	22267	19965
rejected %	12%	13%	10%	10%	11%	11%

	ccd 4	ccd 5	ccd 6	ccd 7	ccd 8	ccd 9
grade 0 events	81196	44338	92465	71800	95199	84889
	49%	11%	49%	17%	49%	48%
grade 1 events	477	129	444	168	489	473
	0%	0%	0%	0%	0%	0%
grade 2 events	25275	167809	29243	110397	30517	27118
	15%	41%	15%	26%	15%	15%
grade 3 events	8607	12180	10502	28992	10604	9647
	5%	3%	5%	7%	5%	5%
grade 4 events	8777	12037	10416	28666	10952	9412
	5%	2%	5%	6%	5%	5%
grade 5 events	1371	6355	1507	5987	1631	1449
	0%	1%	0%	1%	0%	0%
grade 6 events	19643	112591	26894	133403	25477	23391
	12%	27%	14%	32%	13%	13%
grade 7 events	17722	46815	16891	34571	19272	17348
	10%	11%	8%	8%	9%	9%

2.2 Compared Parameters

Parameter	Planned	Actual	Parameter	Planned	Actual
Instrument	ACIS	ACIS	Obspar format version number	6	6
Detector	ACIS-456789	ACIS-456789	Obspar file type	PREDICTED	ACTUAL
Grating	NONE	NONE	Obspar update status	NONE	UPDATED
Data mode	FAINT	FAINT	On-chip summing requested	N	N
Observation mode	SECONDARY	SECONDARY	Subarray requested	NONE	NONE
Pointing RA	0	177.9843303739519	Alternating exposures requested	N	N
Pointing Dec	0	19.97542377514836	Primary exposure time	0.000000	3.2
Pointing Roll	0.0	206.4688863916406			
SIM focus pos (mm)	-0.684267	-0.6828225247311905			
SIM defocus (mm)	0	0.8505141146731063			
SIM translation stage pos (mm)	-190.132523	250.466033080201			
SIM translation stage offset (mm)	0	-0.01005468664627074			
Observation start time	102383829.304	102383828.53516			
Observation start date	2001-03-30T23:57:09	2001-03-30T23:57:08			
Observation end time	102395922.254	102395921.48563			
Observation end date	2001-03-31T03:18:42	2001-03-31T03:18:41			
Read mode	TIMED	TIMED			

2.3 Aspect

2.4 Star Slots

2.5 FID Slots

A Summary

A.1 Status

V&V Scientist	Beth Sundheim
V&V Date (YYYY-MM-DD)	2006.11.13
V&V Edition	1
V&V Disposition and Status	OK
V&V Charge Time	5.52850611

A.2 Comments