

V&V Reference Report

L2 ASCDS Version : 8.4.5

Observation 61671 - L2 Version 3
Chandra X-Ray Center

L2 Processing Date : Sep 15 2012

Contents

1	Front	2
2	OBI	3
2.1	OBI	3
2.1.1	Images	3
2.1.2	Bias	3
2.1.3	Parameters	4
2.1.4	Events	4
2.2	Compared Parameters	5
2.3	Star Slots	6
2.4	FID Slots	6
A	Summary	7
A.1	Status	7
A.2	Comments	7

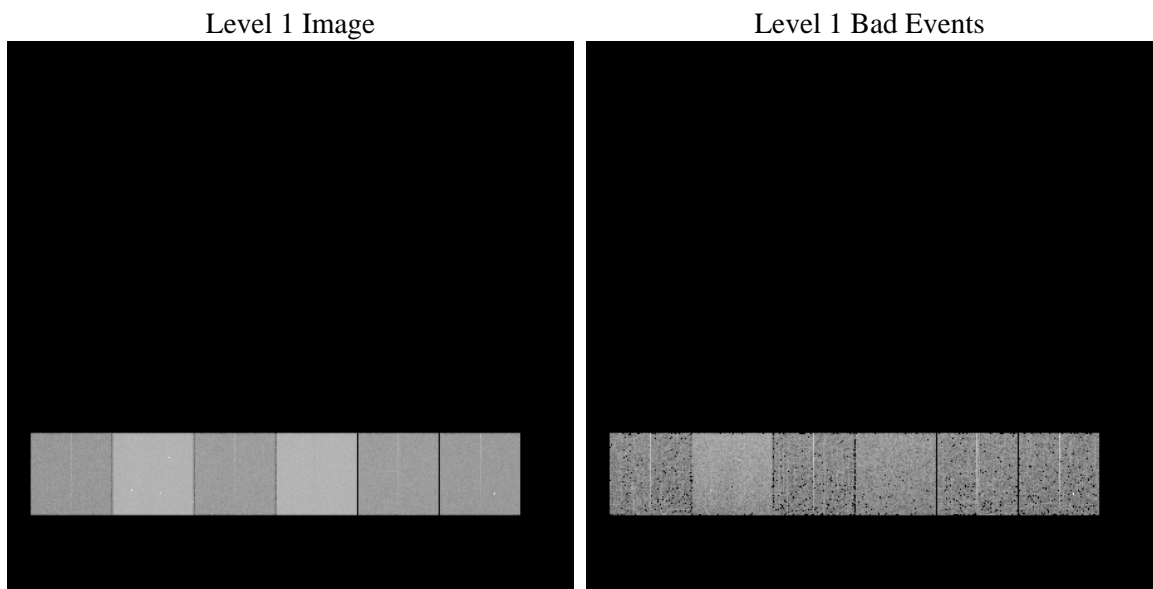
1 Front

seq_num	 	Sequence number
obs_id	61671	Observation id
title	ACIS-456789 diagnostics	Proposal title
observer	CHANDRA engineering request/realtime commanding	Principal investig
object	 	Source name
dtcycle	0	
cycle	P	events from which exps? Prim/Second/Both
ra_targ	0.0	Observer's specified target RA [deg]
dec_targ	0.0	Observer's specified target Dec [deg]
ra_nom	279.98125902856	Nominal RA [deg]
dec_nom	-24.97685391435	Nominal Dec [deg]
roll_nom	93.638407072305	Nominal Roll [deg]
revision	3	Processing version of data
ontime	4913.2863552123	Sum of GTIs [s]
livetime	4851.0713649568	Livetime [s]
ontime4	1768.760817945	Sum of GTIs [s]
ontime5	5279.5147847682	Sum of GTIs [s]
ontime6	1979.3872378021	Sum of GTIs [s]
ontime7	4913.2863552123	Sum of GTIs [s]
ontime8	1979.4692380577	Sum of GTIs [s]
ontime9	1891.756018132	Sum of GTIs [s]
l2events	1222810	Number of level 2 events

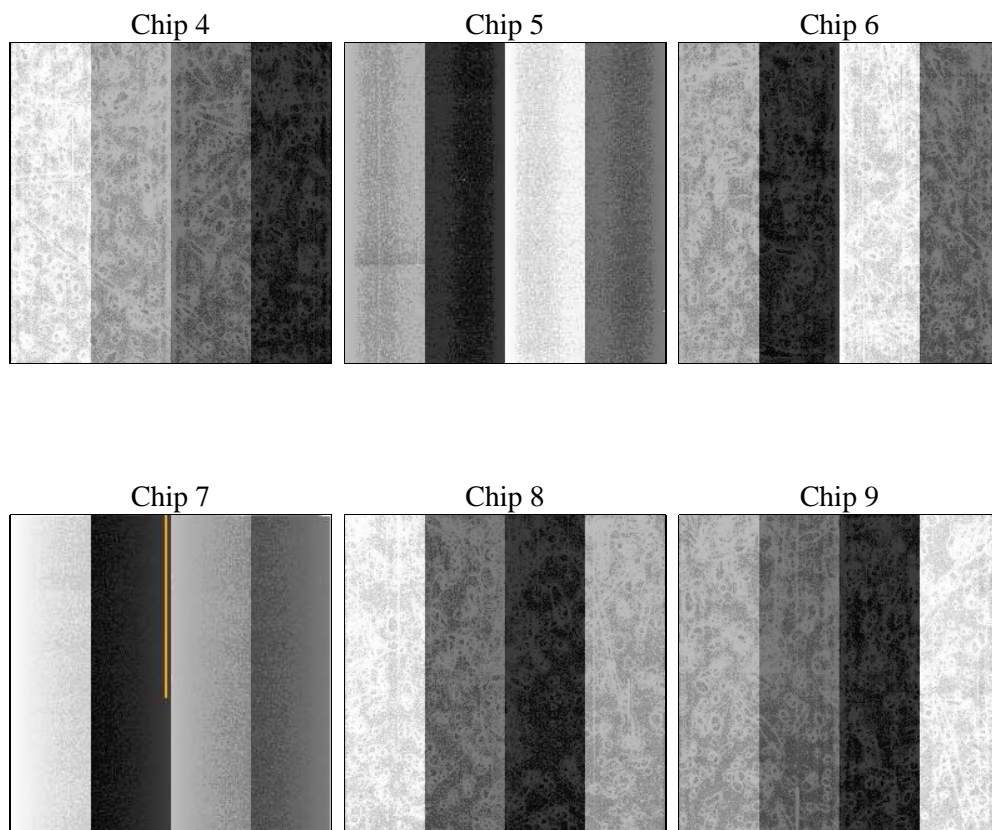
2 OBI

2.1 OBI

2.1.1 Images



2.1.2 Bias



2.1.3 Parameters

obi_num	1	Obi number	sched_exp_time	0.0	[s] Scheduled observation exposure time
ascdsver	8.4.5	Processing system revision	ontime	4913.2863552123	Sum of GTIs [s]
caldsver	4.5.1.1	 	ontime4	1768.760817945	Sum of GTIs [s]
date	2012-09-15T05:49:45	Date and time of file creation	ontime5	5279.5147847682	Sum of GTIs [s]
revision	3	Processing version of data	ontime6	1979.3872378021	Sum of GTIs [s]
			ontime7	4913.2863552123	Sum of GTIs [s]
			ontime8	1979.4692380577	Sum of GTIs [s]
			ontime9	1891.756018132	Sum of GTIs [s]
			l1events	1427400	Number of level 1 events

2.1.4 Events

	ccd 4	ccd 5	ccd 6	ccd 7	ccd 8	ccd 9		ccd 4	ccd 5	ccd 6	ccd 7	ccd 8	ccd 9
level 1 events	145245	383567	171600	394375	173885	158728	grade 0 events	69096	89111	80585	96239	81918	74741
rejected events	20916	38797	21897	26307	22463	20437		47%	23%	46%	24%	47%	47%
rejected %	14%	10%	12%	6%	12%	12%	grade 1 events	516	405	558	300	549	1050
								0%	0%	0%	0%	0%	0%
							grade 2 events	21909	119662	25548	81795	26512	24186
								15%	31%	14%	20%	15%	15%
							grade 3 events	7791	23081	9069	36508	9606	8610
								5%	6%	5%	9%	5%	5%
							grade 4 events	7665	22967	9151	36396	9477	8406
								5%	5%	5%	9%	5%	5%
							grade 5 events	1204	7435	1416	5436	1552	1416
								0%	1%	0%	1%	0%	0%
							grade 6 events	17868	90161	25350	117348	23909	22348
								12%	23%	14%	29%	13%	14%
							grade 7 events	19196	30745	19923	20353	20362	17971
								13%	8%	11%	5%	11%	11%

2.2 Compared Parameters

Parameter	Planned	Actual	Parameter	Planned	Actual
Instrument	ACIS	ACIS	Obspar format version number	7	7
Detector	ACIS-456789	ACIS-456789	Obspar file type	PREDICTED	ACTUAL
Grating	NONE	NONE	Obspar update status	NONE	UPDATED
Data mode	FAINT	FAINT	On-chip summing requested	N	N
Observation mode	SECONDARY	SECONDARY	Subarray requested	NONE	NONE
[deg] Pointing RA	0	279.9812590285646	Alternating exposures requested	N	N
[deg] Pointing Dec	0	-24.97685391434982	[s] Primary exposure time	0.000000	3.2
[deg] Pointing Roll	0.0	93.63840707230489			
[mm] SIM focus pos	-0.684267	-0.6828225247311905			
[mm] SIM defocus	0	0.8505141146731063			
[mm] SIM translation stage pos	-190.132523	250.466033080201			
[mm] SIM translation stage offset	0	-0.01005468664627074			
[s] Observation start time (MET)	103253363.487	103253362.71883			
Observation start date	2001-04-10T01:29:23	2001-04-10T01:29:22			
[s] Observation end time (MET)	103265007.488	103265006.71928			
Observation end date	2001-04-10T04:43:27	2001-04-10T04:43:26			
Read mode	TIMED	TIMED			

2.3 Star Slots

2.4 FID Slots

A Summary

A.1 Status

V&V Scientist	Jen Lauer
V&V Date (YYYY-MM-DD)	2012.09.18
V&V Edition	1
V&V Disposition and Status	OK
V&V Charge Time	4.9132863552123

A.2 Comments