

V&V Reference Report

L2 ASCDS Version : 7.6.9

Observation 61671 - L2 Version 001
Chandra X-Ray Center

L2 Processing Date : Nov 13 2006

Contents

1	Front	2
2	OBI	3
2.1	OBI	3
2.1.1	Images	3
2.1.2	Bias	3
2.1.3	Parameters	4
2.1.4	Events	4
2.2	Compared Parameters	5
2.3	Aspect	6
2.4	Star Slots	8
2.5	FID Slots	8
A	Summary	9
A.1	Status	9
A.2	Comments	9

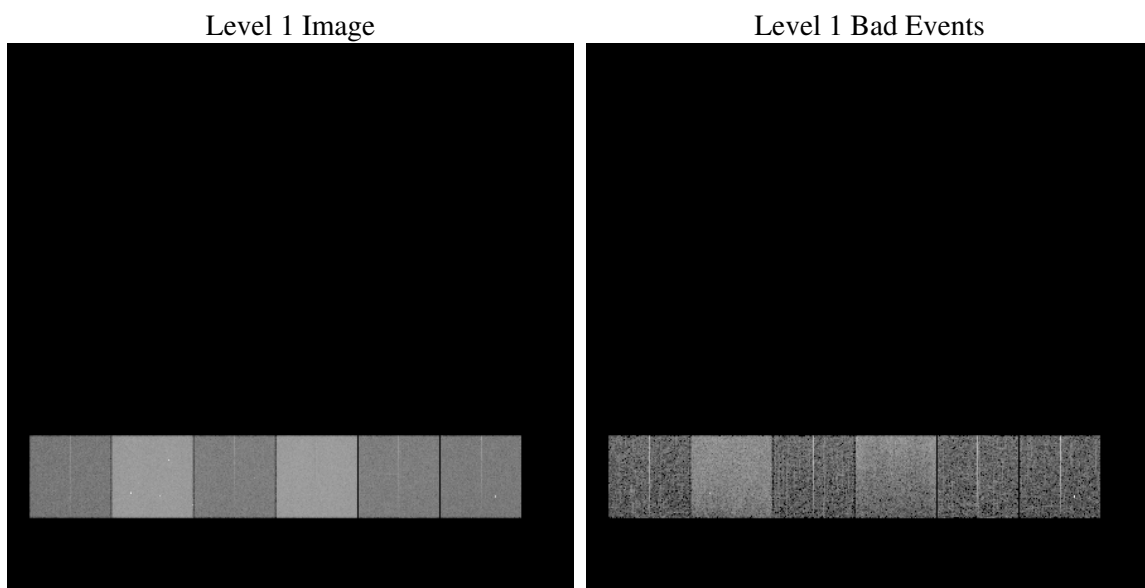
1 Front

seq_num	
obs_id	61671
title	ACIS-456789 diagnostics
observer	CHANDRA engineering request/realtime commanding
object	
dtcycle	0
cycle	P
ra_targ	0.0
dec_targ	0.0
ra_nom	279.98125902567
dec_nom	-24.976853923278
roll_nom	93.638407072584
revision	2
ontime	4913.2863552272
livetime	4851.0713649715
ontime4	1767.160817951
ontime5	5279.5147847831
ontime6	1977.7872378081
ontime7	4913.2863552272
ontime8	1977.8692380637
ontime9	1890.1560181379
l2events	1200959

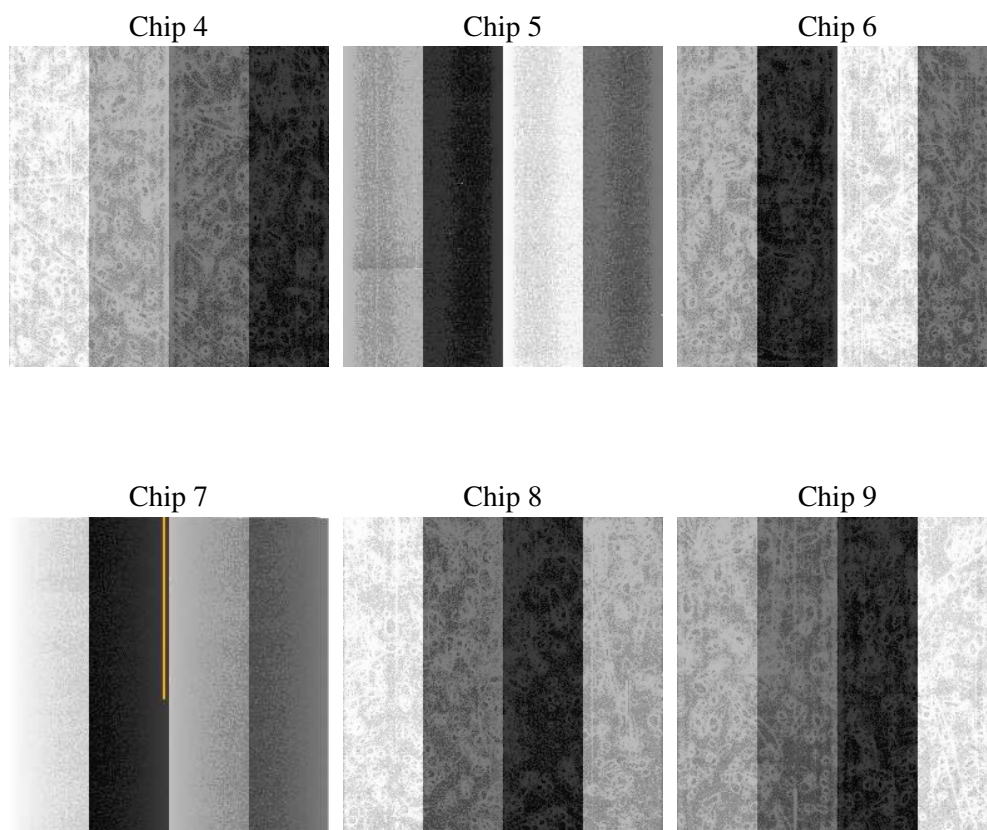
2 OBI

2.1 OBI

2.1.1 Images



2.1.2 Bias



2.1.3 Parameters

obi_num	1
ascdsver	7.6.9
caldsver	3.2.4
date	2006-11-13T16:56:53
revision	2

sched_exp_time	0.0
ontime	4916.6278324723
ontime4	1769.6062503904
ontime5	5282.8562620282
ontime6	1980.2737102509
ontime7	4916.6278324723
ontime8	1980.2736304998
ontime9	1892.7656105757
l1events	1427400

2.1.4 Events

	ccd 4	ccd 5	ccd 6	ccd 7	ccd 8	ccd 9
level 1 events	145245	383567	171600	394375	173885	158728
rejected events	21139	48767	22146	37689	22703	20636
rejected %	14%	12%	12%	9%	13%	13%

	ccd 4	ccd 5	ccd 6	ccd 7	ccd 8	ccd 9
grade 0 events	69093	46903	80584	69892	81916	74741
	47%	12%	46%	17%	47%	47%
grade 1 events	516	230	558	208	549	1048
	0%	0%	0%	0%	0%	0%
grade 2 events	21912	157672	25549	106029	26514	24186
	15%	41%	14%	26%	15%	15%
grade 3 events	7791	12516	9065	27115	9606	8610
	5%	3%	5%	6%	5%	5%
grade 4 events	7664	12358	9149	26995	9476	8404
	5%	3%	5%	6%	5%	5%
grade 5 events	1204	5831	1415	5279	1552	1418
	0%	1%	0%	1%	0%	0%
grade 6 events	17869	105562	25354	126887	23909	22350
	12%	27%	14%	32%	13%	14%
grade 7 events	19196	42495	19926	31970	20363	17971
	13%	11%	11%	8%	11%	11%

2.2 Compared Parameters

Parameter	Planned	Actual	Parameter	Planned	Actual
Instrument	ACIS	ACIS	Obspar format version number	6	6
Detector	ACIS-456789	ACIS-456789	Obspar file type	PREDICTED	ACTUAL
Grating	NONE	NONE	Obspar update status	NONE	UPDATED
Data mode	FAINT	FAINT	On-chip summing requested	N	N
Observation mode	SECONDARY	SECONDARY	Subarray requested	NONE	NONE
Pointing RA	0	279.9812590256661	Alternating exposures requested	N	N
Pointing Dec	0	-24.97685392327833	Primary exposure time	0.000000	3.2
Pointing Roll	0.0	93.63840707258355			
SIM focus pos (mm)	-0.684267	-0.6828225247311905			
SIM defocus (mm)	0	0.8505141146731063			
SIM translation stage pos (mm)	-190.132523	250.466033080201			
SIM translation stage offset (mm)	0	-0.01005468664627074			
Observation start time	103253363.487	103253362.71883			
Observation start date	2001-04-10T01:29:23	2001-04-10T01:29:22			
Observation end time	103265007.488	103265006.71928			
Observation end date	2001-04-10T04:43:27	2001-04-10T04:43:26			
Read mode	TIMED	TIMED			

2.3 Aspect

2.4 Star Slots

2.5 FID Slots

A Summary

A.1 Status

V&V Scientist	Jen Lauer
V&V Date (YYYY-MM-DD)	2006.11.13
V&V Edition	1
V&V Disposition and Status	OK
V&V Charge Time	4.91328635

A.2 Comments