

V&V Reference Report

L2 ASCDS Version : 8.4.5

Observation 61551 - L2 Version 3
Chandra X-Ray Center

L2 Processing Date : Sep 20 2012

Contents

| | | |
|----------|-------------------------------|----------|
| 1 | Front | 2 |
| 2 | OBI | 3 |
| 2.1 | OBI | 3 |
| 2.1.1 | Images | 3 |
| 2.1.2 | Bias | 3 |
| 2.1.3 | Parameters | 4 |
| 2.1.4 | Events | 4 |
| 2.2 | Compared Parameters | 5 |
| 2.3 | Star Slots | 6 |
| 2.4 | FID Slots | 6 |
| A | Summary | 7 |
| A.1 | Status | 7 |
| A.2 | Comments | 7 |

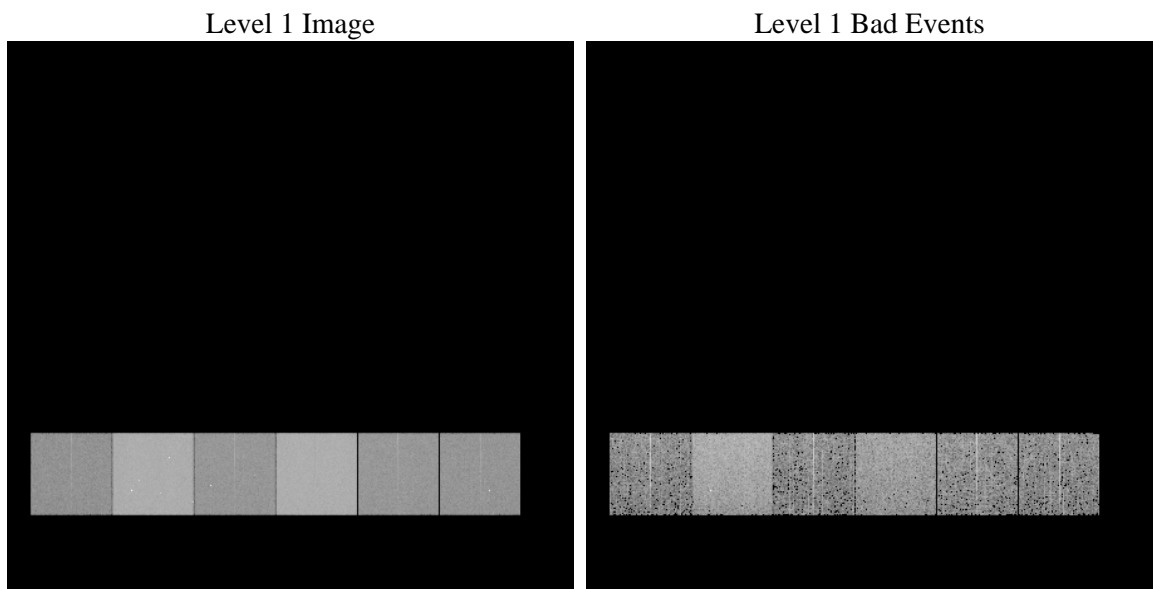
1 Front

| | | |
|----------|---|---|
| seq_num | | Sequence number |
| obs_id | 61551 | Observation id |
| title | ACIS-456789 diagnostics | Proposal title |
| observer | CHANDRA engineering request/realtime commanding | Principal investig |
| object | | Source name |
| dtcycle | 0 | |
| cycle | P | events from which exps? Prim/Second/Both |
| ra_targ | 0.0 | Observer's specified target RA [deg] |
| dec_targ | 0.0 | Observer's specified target Dec [deg] |
| ra_nom | 328.47427491372 | Nominal RA [deg] |
| dec_nom | -2.9872138541972 | Nominal Dec [deg] |
| roll_nom | 120.82715522132 | Nominal Roll [deg] |
| revision | 3 | Processing version of data |
| ontime | 5577.4269259423 | Sum of GTIs [s] |
| livetime | 5506.8021878827 | Livetime [s] |
| ontime4 | 2096.9506417066 | Sum of GTIs [s] |
| ontime5 | 5989.386837244 | Sum of GTIs [s] |
| ontime6 | 2359.0349324197 | Sum of GTIs [s] |
| ontime7 | 5577.4269259423 | Sum of GTIs [s] |
| ontime8 | 2356.2336416245 | Sum of GTIs [s] |
| ontime9 | 2271.9668111503 | Sum of GTIs [s] |
| l2events | 1223624 | Number of level 2 events |

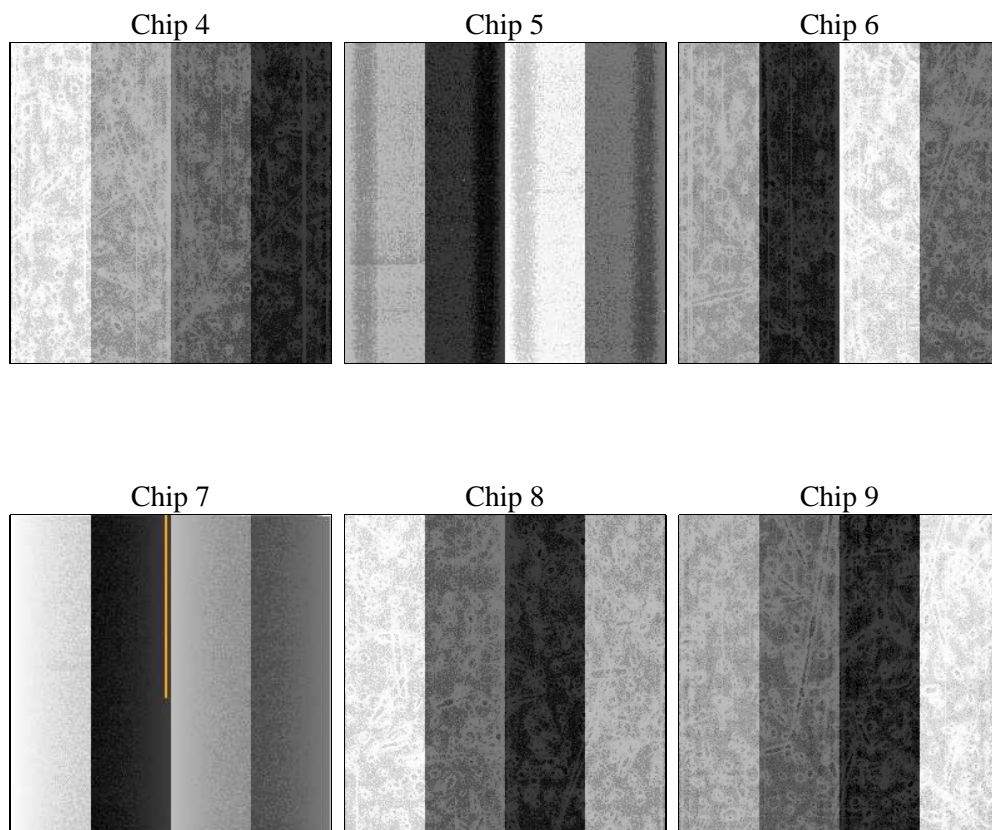
2 OBI

2.1 OBI

2.1.1 Images



2.1.2 Bias



2.1.3 Parameters

| | | | | | |
|----------|---------------------|--------------------------------|----------------|-----------------|---|
| obi_num | 0 | Obi number | sched_exp_time | 0.0 | [s] Scheduled observation exposure time |
| ascdsver | 8.4.5 | Processing system revision | ontime | 5577.4269259423 | Sum of GTIs [s] |
| caldsver | 4.5.1.1 | | ontime4 | 2096.9506417066 | Sum of GTIs [s] |
| date | 2012-09-20T19:23:26 | Date and time of file creation | ontime5 | 5989.386837244 | Sum of GTIs [s] |
| revision | 3 | Processing version of data | ontime6 | 2359.0349324197 | Sum of GTIs [s] |
| | | | ontime7 | 5577.4269259423 | Sum of GTIs [s] |
| | | | ontime8 | 2356.2336416245 | Sum of GTIs [s] |
| | | | ontime9 | 2271.9668111503 | Sum of GTIs [s] |
| | | | l1events | 1426904 | Number of level 1 events |

2.1.4 Events

| | ccd 4 | ccd 5 | ccd 6 | ccd 7 | ccd 8 | ccd 9 | | ccd 4 | ccd 5 | ccd 6 | ccd 7 | ccd 8 | ccd 9 |
|-----------------|--------|--------|--------|--------|--------|--------|----------------|-------|--------|-------|--------|-------|-------|
| level 1 events | 144629 | 382404 | 173372 | 389620 | 175568 | 161311 | grade 0 events | 71460 | 88771 | 84698 | 91819 | 85004 | 78643 |
| rejected events | 18284 | 42009 | 18577 | 29650 | 21221 | 18270 | | 49% | 23% | 48% | 23% | 48% | 48% |
| rejected % | 12% | 10% | 10% | 7% | 12% | 11% | grade 1 events | 386 | 472 | 437 | 219 | 418 | 447 |
| | | | | | | | | 0% | 0% | 0% | 0% | 0% | 0% |
| | | | | | | | grade 2 events | 22240 | 116511 | 26885 | 79730 | 27297 | 25185 |
| | | | | | | | | 15% | 30% | 15% | 20% | 15% | 15% |
| | | | | | | | grade 3 events | 7822 | 23132 | 9447 | 36875 | 9733 | 8820 |
| | | | | | | | | 5% | 6% | 5% | 9% | 5% | 5% |
| | | | | | | | grade 4 events | 7675 | 22925 | 9623 | 36399 | 9674 | 8742 |
| | | | | | | | | 5% | 5% | 5% | 9% | 5% | 5% |
| | | | | | | | grade 5 events | 1133 | 8161 | 1461 | 6206 | 1521 | 1441 |
| | | | | | | | | 0% | 2% | 0% | 1% | 0% | 0% |
| | | | | | | | grade 6 events | 17148 | 89056 | 24142 | 115147 | 22639 | 21651 |
| | | | | | | | | 11% | 23% | 13% | 29% | 12% | 13% |
| | | | | | | | grade 7 events | 16765 | 33376 | 16679 | 23225 | 19282 | 16382 |
| | | | | | | | | 11% | 8% | 9% | 5% | 10% | 10% |

2.2 Compared Parameters

| Parameter | Planned | Actual | Parameter | Planned | Actual |
|-----------------------------------|---------------------|----------------------|---------------------------------|-----------|---------|
| Instrument | ACIS | ACIS | Obspar format version number | 7 | 7 |
| Detector | ACIS-456789 | ACIS-456789 | Obspar file type | PREDICTED | ACTUAL |
| Grating | NONE | NONE | Obspar update status | NONE | UPDATED |
| Data mode | FAINT | FAINT | On-chip summing requested | N | N |
| Observation mode | SECONDARY | SECONDARY | Subarray requested | NONE | NONE |
| [deg] Pointing RA | 0 | 328.4742749137206 | Alternating exposures requested | N | N |
| [deg] Pointing Dec | 0 | -2.987213854197164 | [s] Primary exposure time | 3.2 | 3.2 |
| [deg] Pointing Roll | 0.0 | 120.8271552213163 | | | |
| [mm] SIM focus pos | -0.684267 | -0.6828225247311905 | | | |
| [mm] SIM defocus | 0 | 0.8505141146731063 | | | |
| [mm] SIM translation stage pos | -190.132523 | 250.466033080201 | | | |
| [mm] SIM translation stage offset | 0 | -0.01005468664627074 | | | |
| [s] Observation start time (MET) | 111252160.398584 | 111252159.63011 | | | |
| Observation start date | 2001-07-11T15:22:40 | 2001-07-11T15:22:39 | | | |
| [s] Observation end time (MET) | 111283535.649813 | 111283534.88134 | | | |
| Observation end date | 2001-07-12T00:05:36 | 2001-07-12T00:05:34 | | | |
| Read mode | TIMED | TIMED | | | |

2.3 Star Slots

2.4 FID Slots

A Summary

A.1 Status

| | |
|----------------------------|-----------------|
| V&V Scientist | Jen Lauer |
| V&V Date (YYYY-MM-DD) | 2012.09.24 |
| V&V Edition | 1 |
| V&V Disposition and Status | OK |
| V&V Charge Time | 5.5774269259423 |

A.2 Comments