

V&V Reference Report

L2 ASCDS Version : 7.6.7.1

Observation 6141 - L2 Version 002
Chandra X-Ray Center

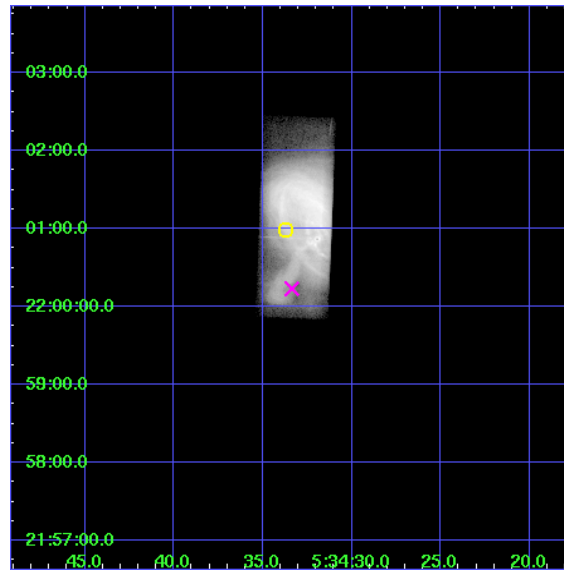
L2 Processing Date : Mar 17 2006

Contents

1	Front	2
2	OBI	3
2.1	OBI	3
2.1.1	Images	3
2.1.2	Parameters	4
2.1.3	Events	4
2.2	Compared Parameters	5
2.3	Aspect	6
2.4	Star Slots	9
2.4.1	Slot 3	9
2.4.2	Slot 4	10
2.4.3	Slot 5	11
2.4.4	Slot 6	12
2.4.5	Slot 7	13
2.5	FID Slots	14
2.5.1	Slot 0	14
2.5.2	Slot 1	15
2.5.3	Slot 2	16
3	Gratings	17
3.1	HEG Arm	17
3.2	MEG Arm	19
A	Summary	21
A.1	Status	21
A.2	Comments	21

1 Front

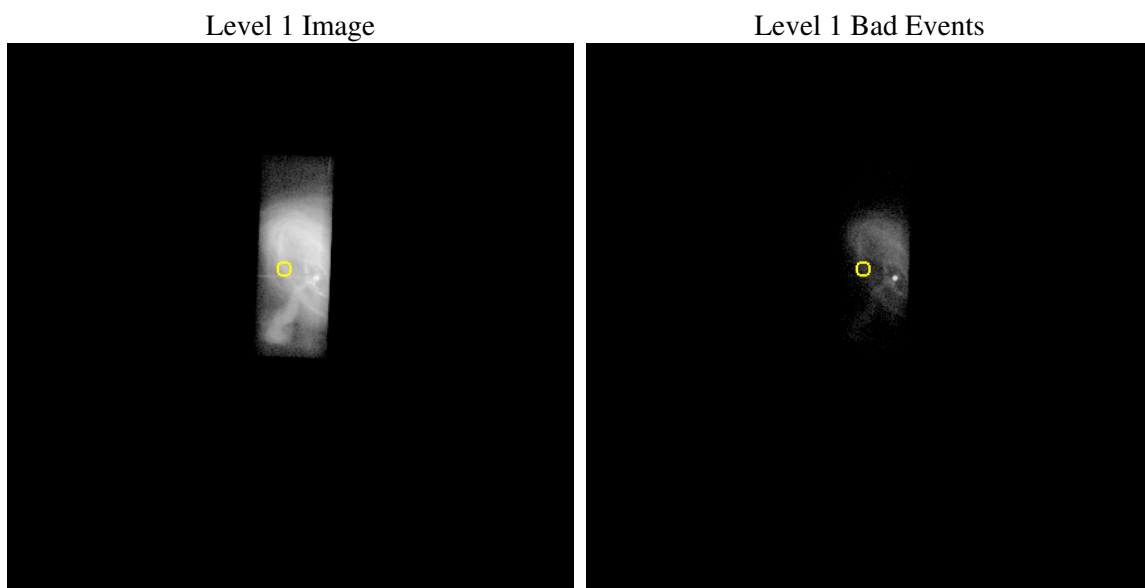
seq_num	500594
obs_id	6141
title	Monitoring of the Relativistic Magnetohydrodynamic Shock in the Crab Nebula
observer	Dr Koji Mori
object	The Crab Nebula
dtcycle	0
cycle	P
ra_targ	83.640417
dec_targ	22.016472
ra_nom	83.639097146864
dec_nom	22.004083706647
roll_nom	272.23359632248
revision	2
ontime	9857.100391686
liveltime	8670.9187118983
ontime7	9857.100391686
l2events	1817743



2 OBI

2.1 OBI

2.1.1 Images



2.1.2 Parameters

obi_num	0
ascdsver	7.6.7.1
caldbver	3.2.1
date	2006-03-18T00:00:19
revision	2

sched_exp_time	10000.000000
ontime	9858.3256779015
ontime7	9858.3256779015
l1events	1893924

2.1.3 Events

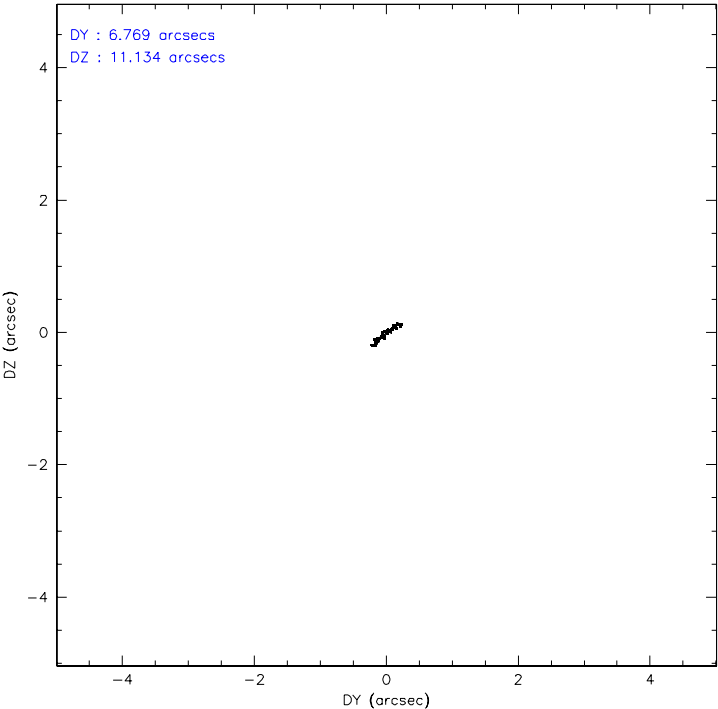
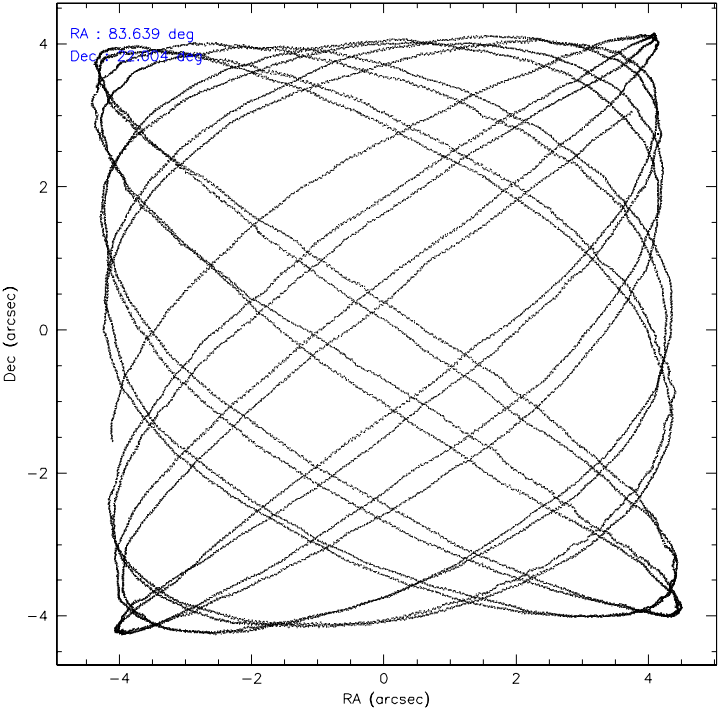
	ccd 7
level 1 events	1893924
rejected events	64912
rejected %	3%

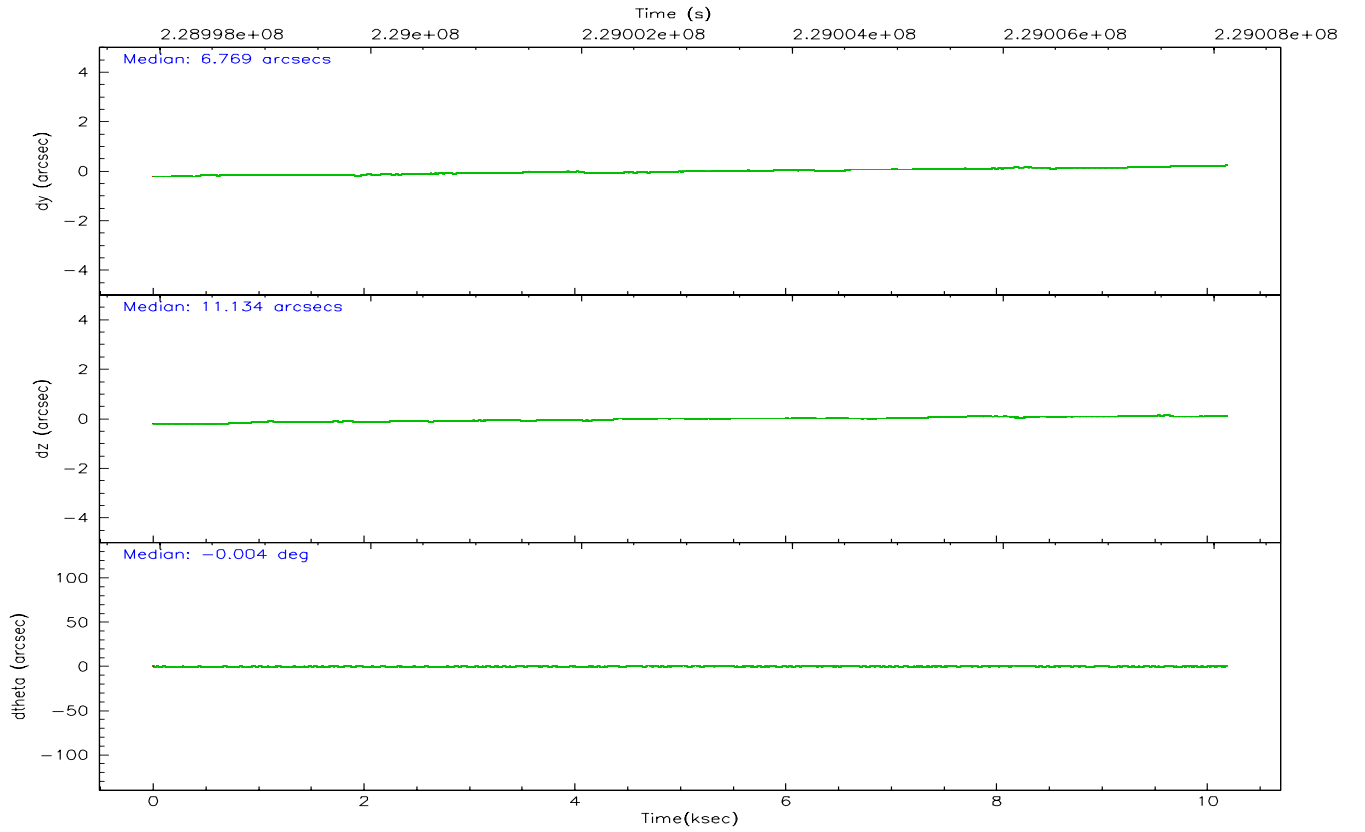
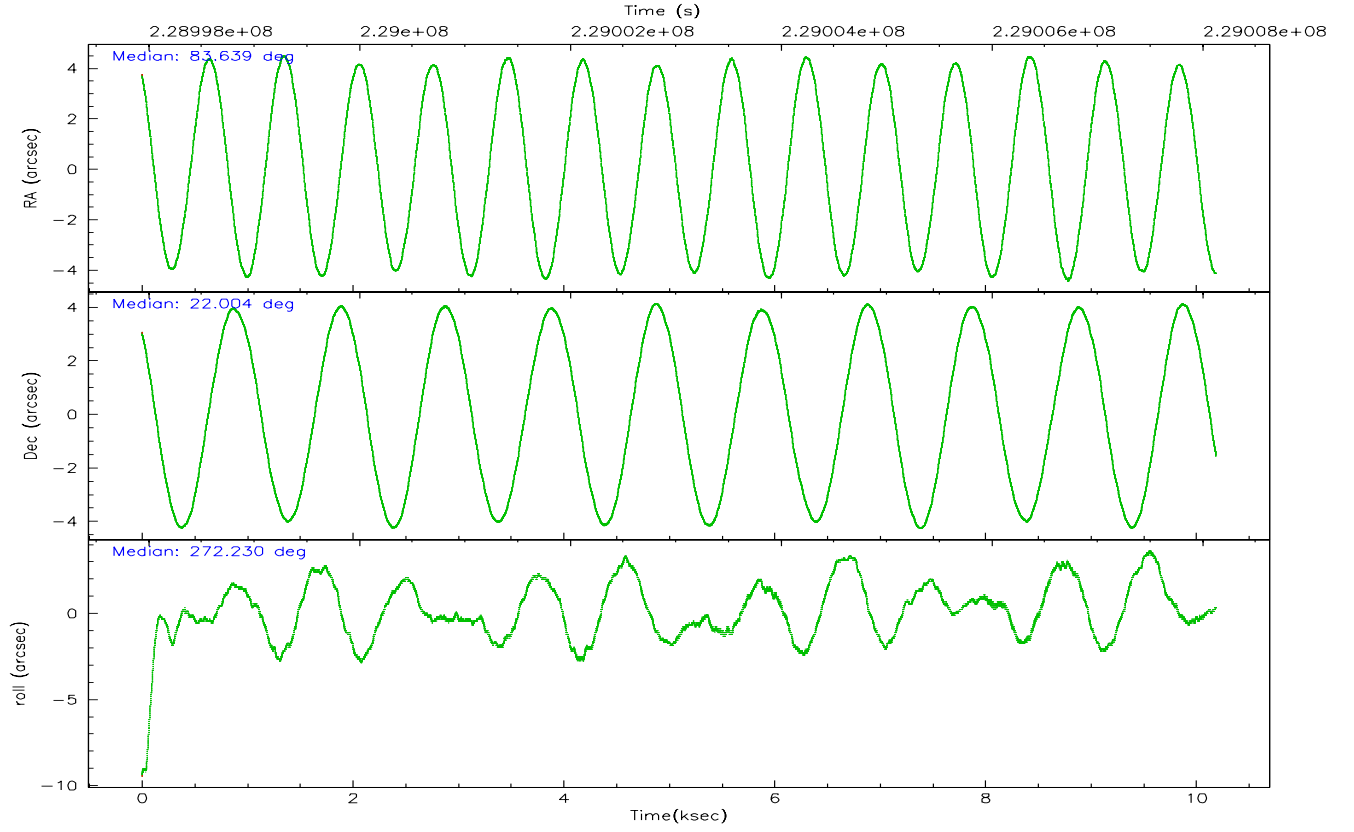
	ccd 7
grade 0 events	371349
	19%
grade 1 events	6135
	0%
grade 2 events	471788
	24%
grade 3 events	207956
	10%
grade 4 events	198755
	10%
grade 5 events	26736
	1%
grade 6 events	579441
	30%
grade 7 events	31764
	1%

2.2 Compared Parameters

Parameter	Planned	Actual	Parameter	Planned	Actual
Instrument	ACIS	ACIS	Obspar format version number	6	6
Detector	ACIS-7	ACIS-7	Obspar file type	PREDICTED	ACTUAL
Grating	HETG	HETG	Obspar update status	NONE	UPDATED
Data mode	GRADED	GRADED	On-chip summing requested	N	N
Observation mode	POINTING	POINTING	Subarray requested	CUSTOM	CUSTOM
Pointing RA	83.623101	83.63909714686415	Subarray start row	127	127
Pointing Dec	22.026896	22.00408370664712	Subarray row count	101	101
Pointing Roll	272.082963	272.2335963224781	Alternating exposures requested	N	N
SIM focus pos (mm)	-0.684267	-0.6828225247311905	Primary exposure time	0.000000	0.3
SIM defocus (mm)	0	0.001444936568705701			
SIM translation stage pos (mm)	-182.132523	-182.1370004450064			
SIM translation stage offset (mm)	-8	-7.995522138001405			
Observation start time	228998123.184000	228997747.61476			
Observation start date	2005-04-04T10:34:19	2005-04-04T10:29:07			
Observation end time	229008123.184000	229008516.77775			
Observation end date	2005-04-04T13:20:59	2005-04-04T13:28:36			
Read mode	TIMED	TIMED			

2.3 Aspect



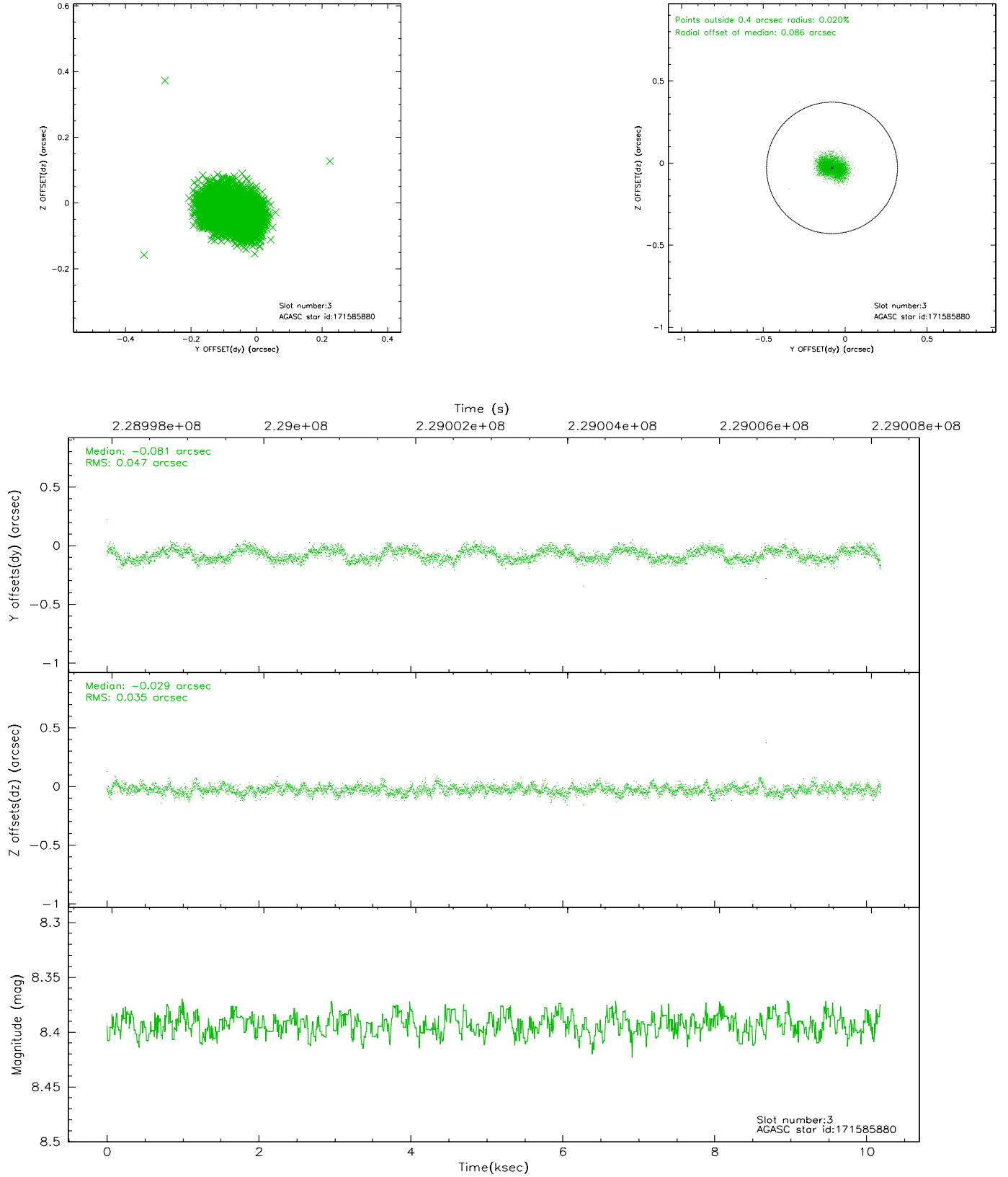


Slot Statistics

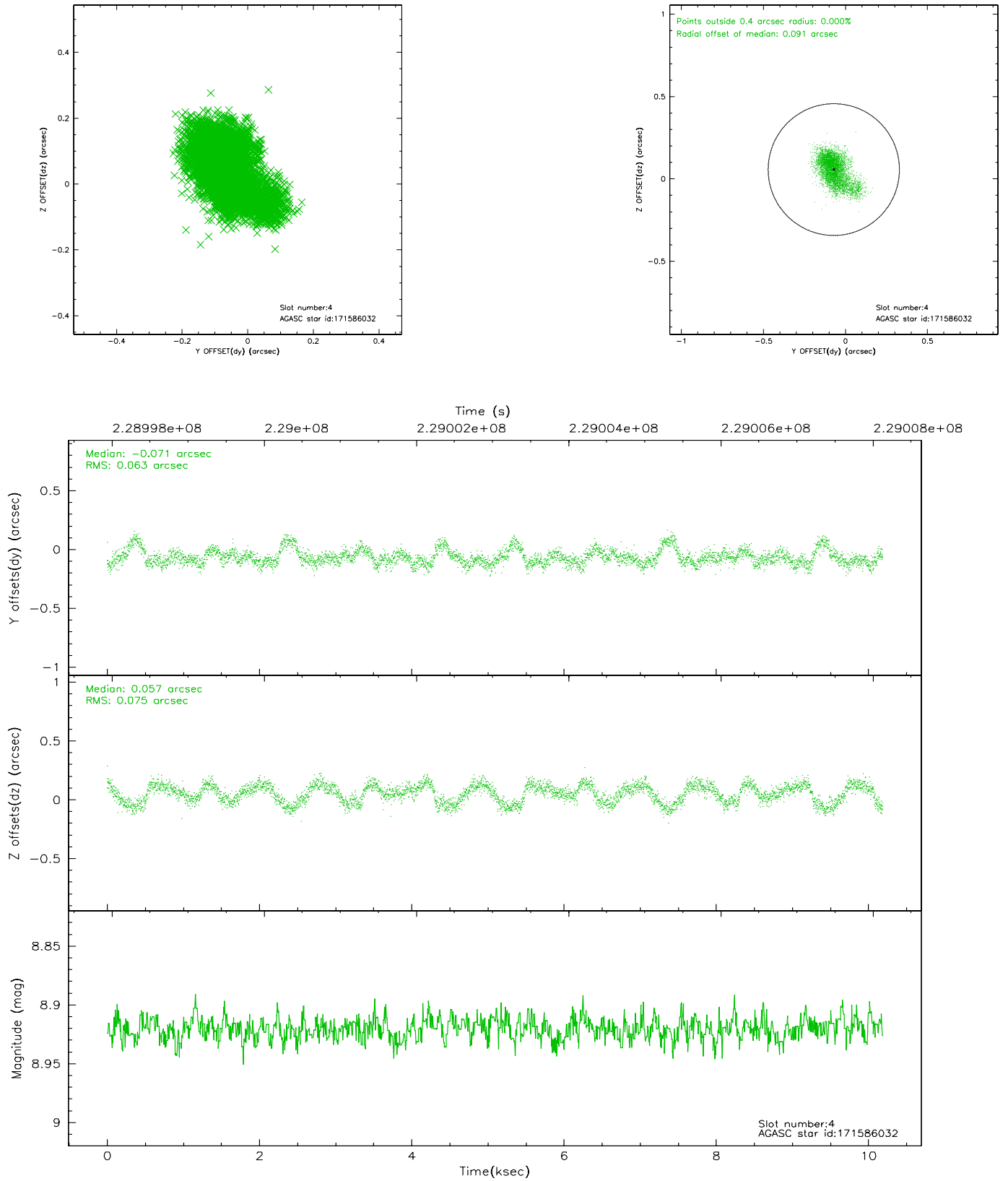
slot	status	id	mag	n_pts	med_dy	med_dz	dr1	dr2	ra	dec	mean_y	mean_z
0	FID	ACIS-S-2	7.08	2486	-0.061	-0.101	0.008	0.014	0.000000	0.000000	-759.00	-1897.20
1	FID	ACIS-S-4	7.18	2486	0.069	0.056	0.006	0.011	0.000000	0.000000	2154.18	10.82
2	FID	ACIS-S-5	7.23	2486	-0.040	0.053	0.008	0.013	0.000000	0.000000	-1811.15	5.08
3	GUIDE	171585880	8.39	4970	-0.081	-0.029	0.063	0.097	83.676260	22.176319	-530.92	196.82
4	GUIDE	171586032	8.92	4966	-0.071	0.057	0.100	0.181	83.950197	22.083225	-164.06	1098.15
5	GUIDE	171597832	9.17	4967	0.173	-0.115	0.099	0.155	83.183230	21.366702	2320.03	-1559.65
6	GUIDE	171721904	9.21	4966	0.102	0.138	0.092	0.146	84.272676	22.116922	-248.99	2176.94
7	GUIDE	243941560	8.29	4970	-0.130	-0.050	0.062	0.098	83.733264	22.568598	-1935.45	437.30

2.4 Star Slots

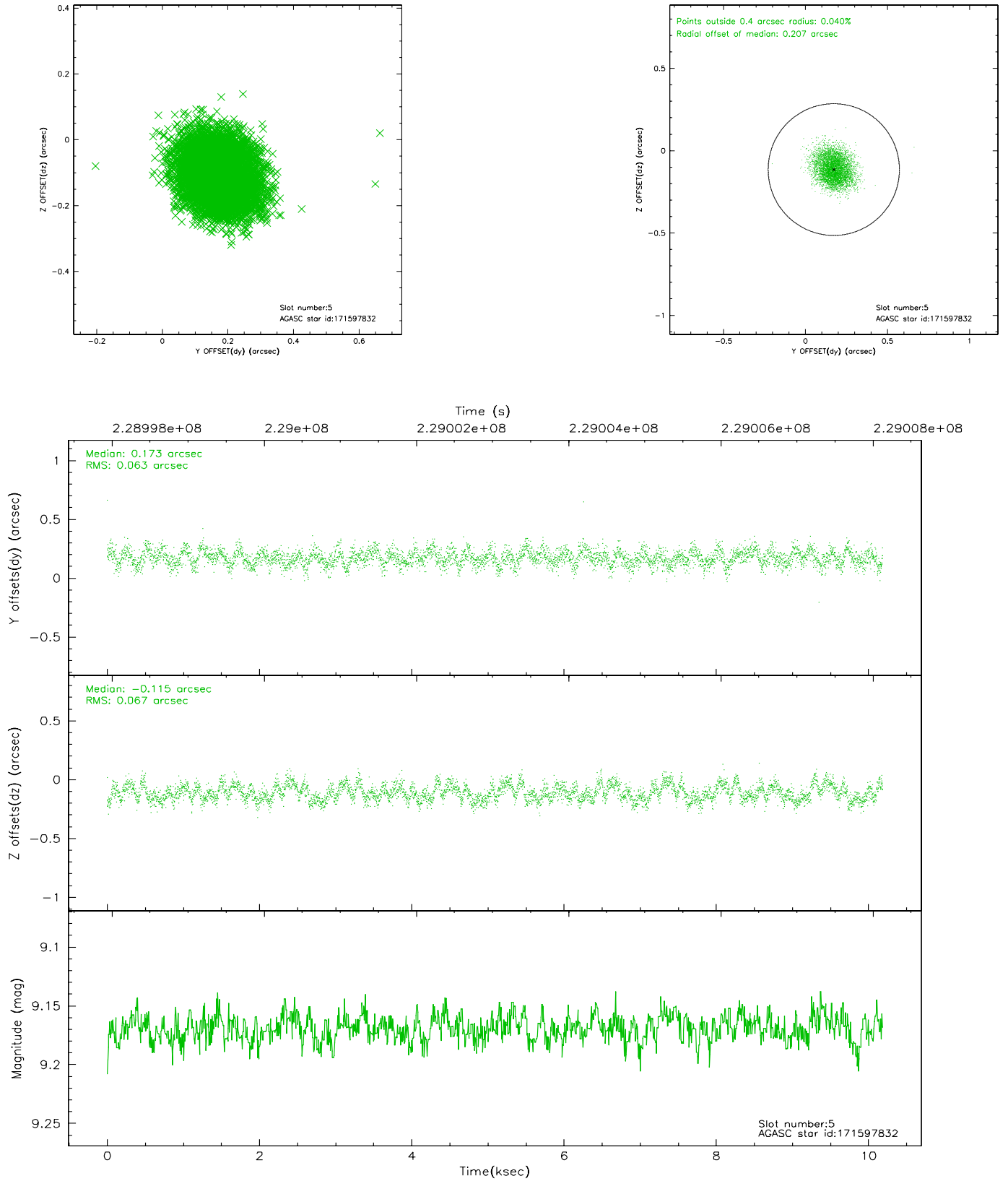
2.4.1 Slot 3



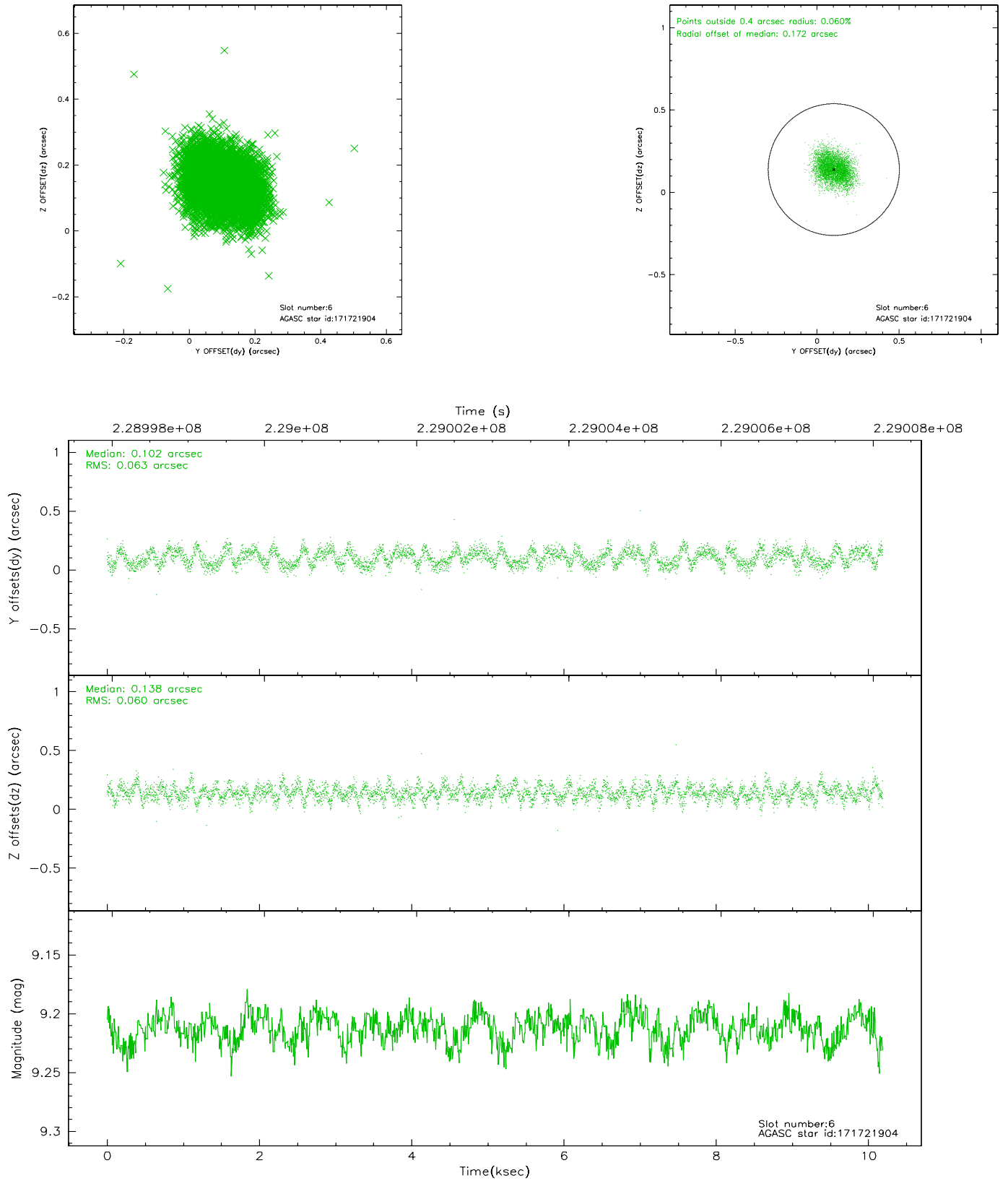
2.4.2 Slot 4



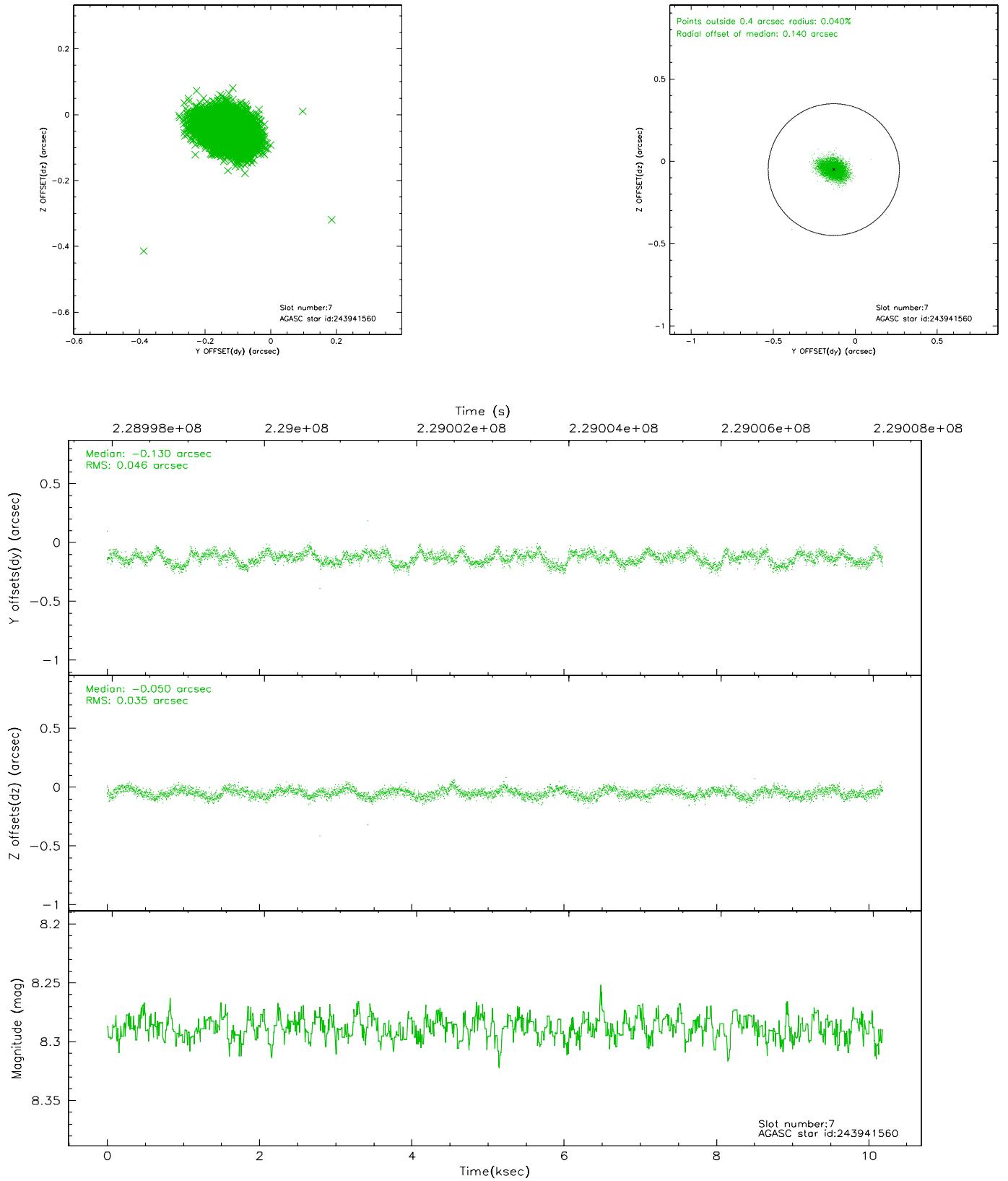
2.4.3 Slot 5



2.4.4 Slot 6

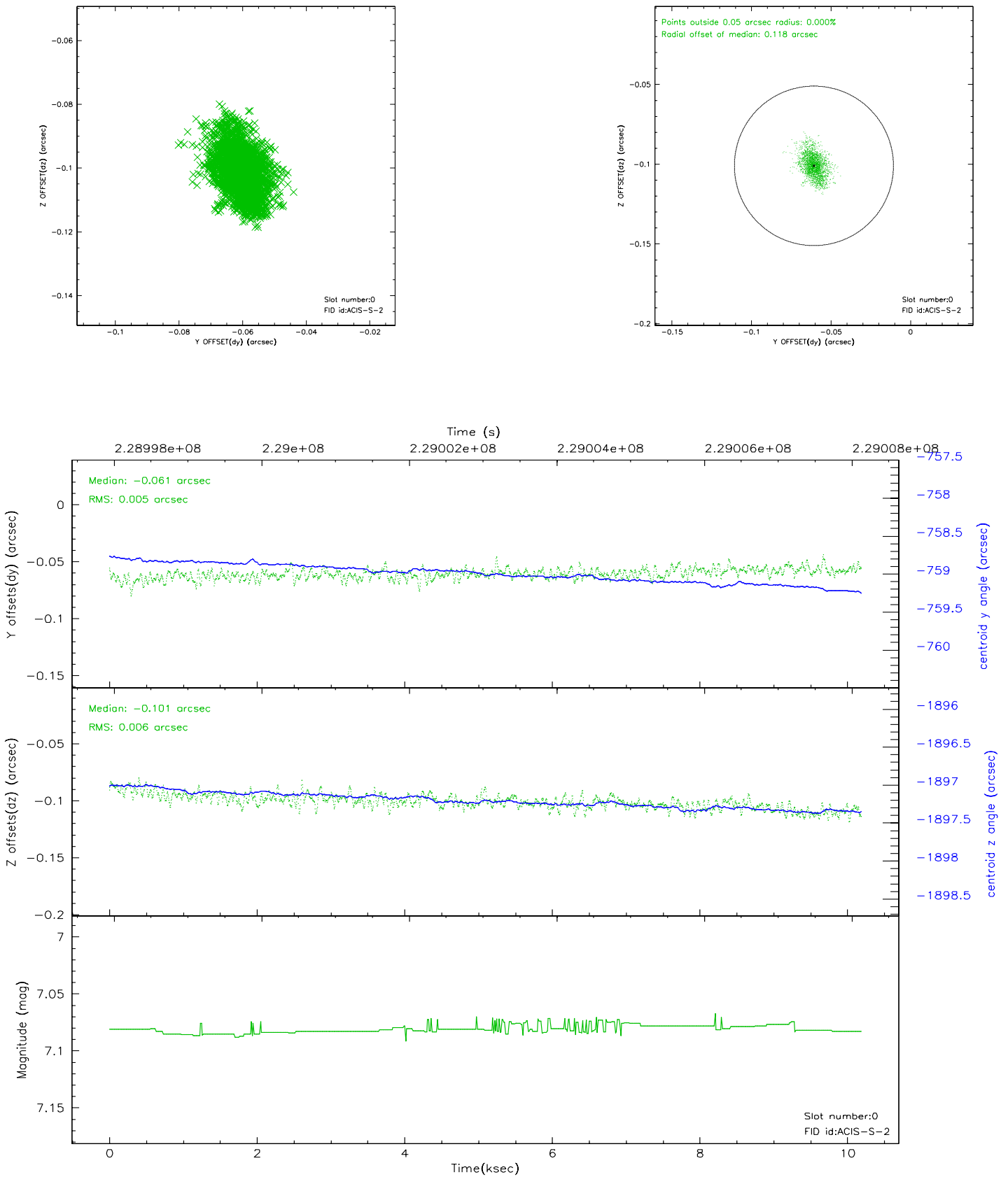


2.4.5 Slot 7

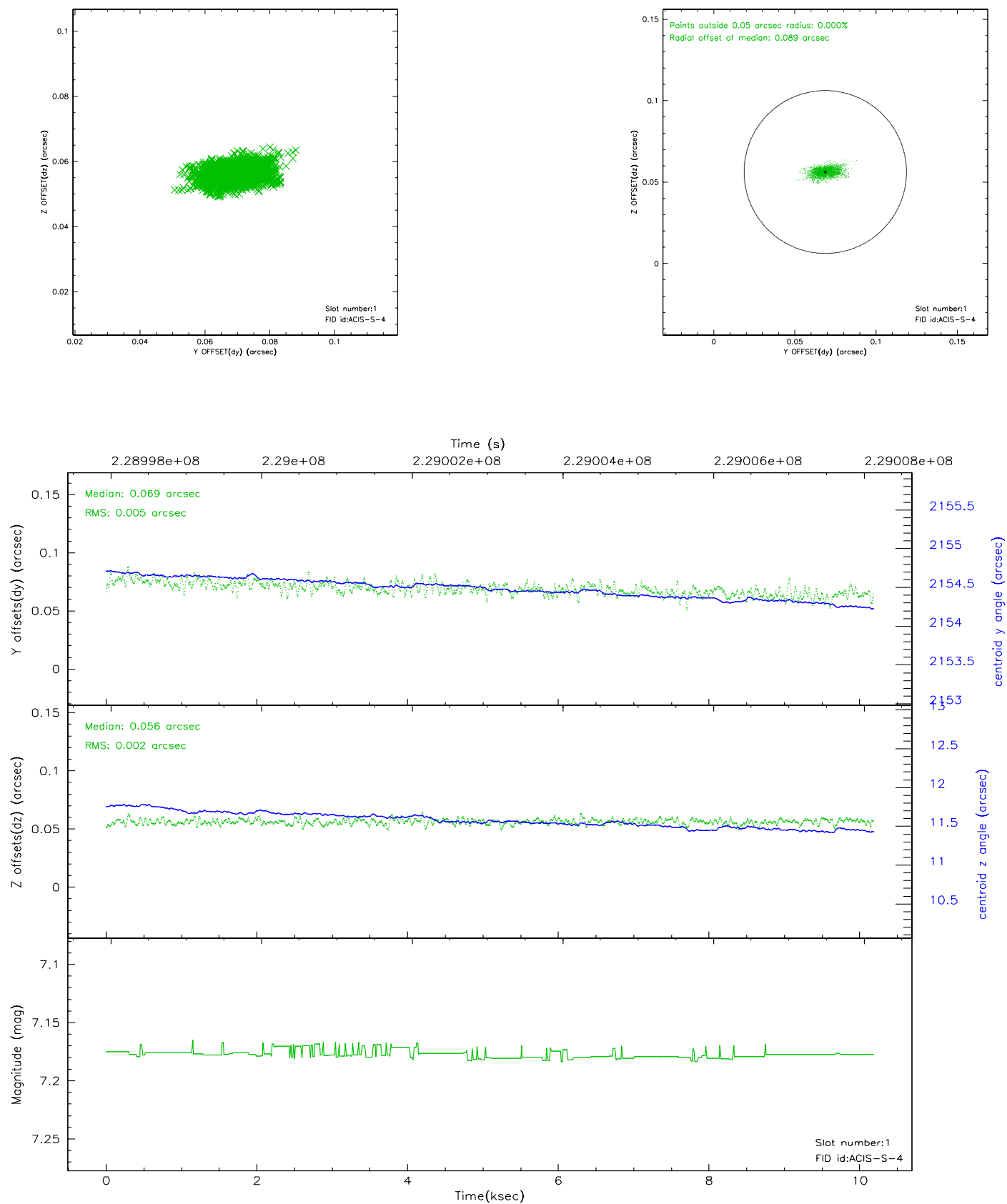


2.5 FID Slots

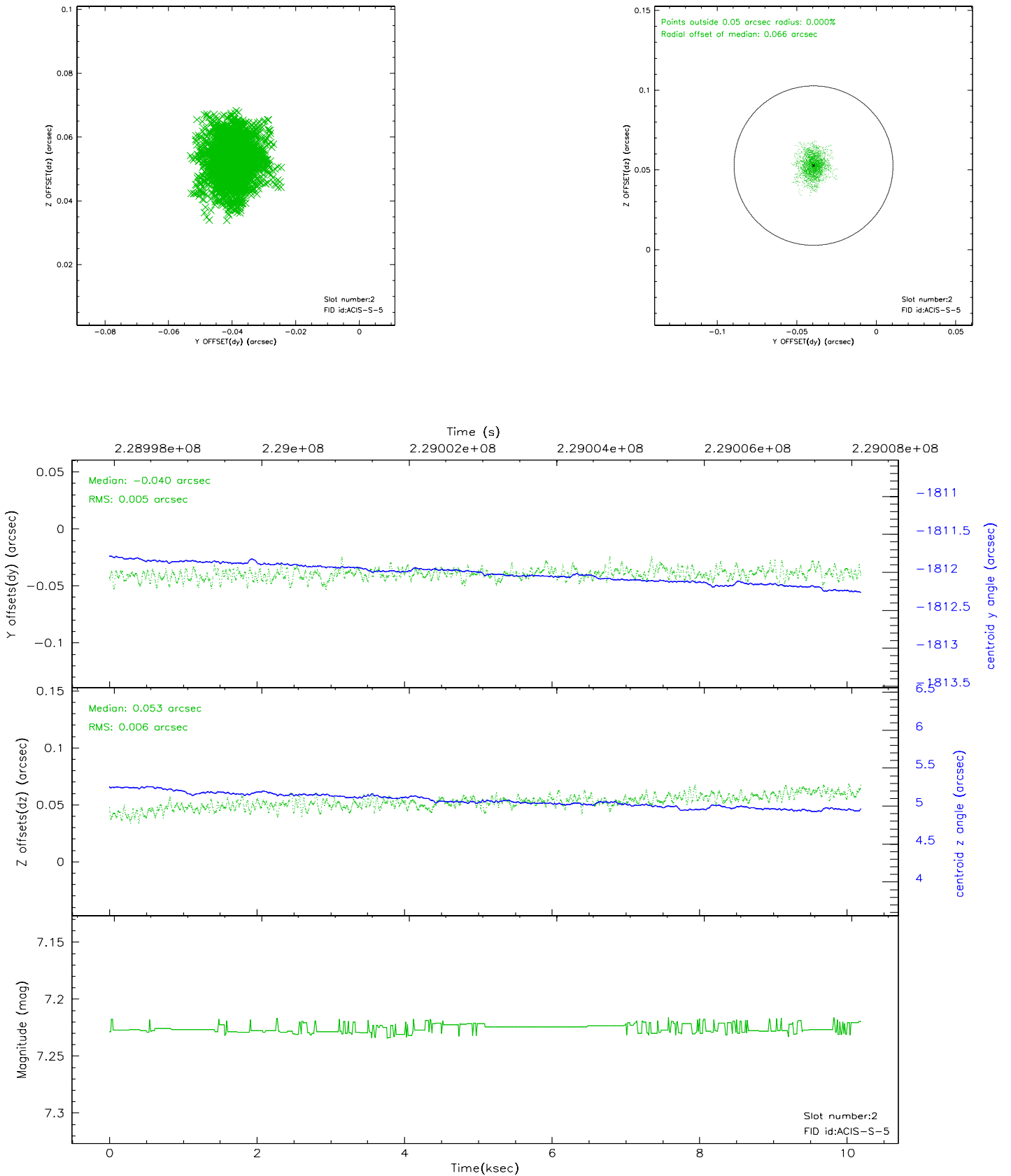
2.5.1 Slot 0



2.5.2 Slot 1



2.5.3 Slot 2

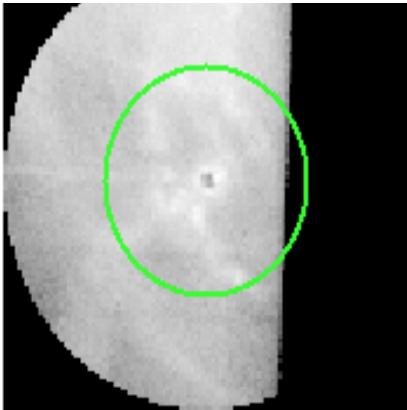


3 Gratings

3.1 HEG Arm



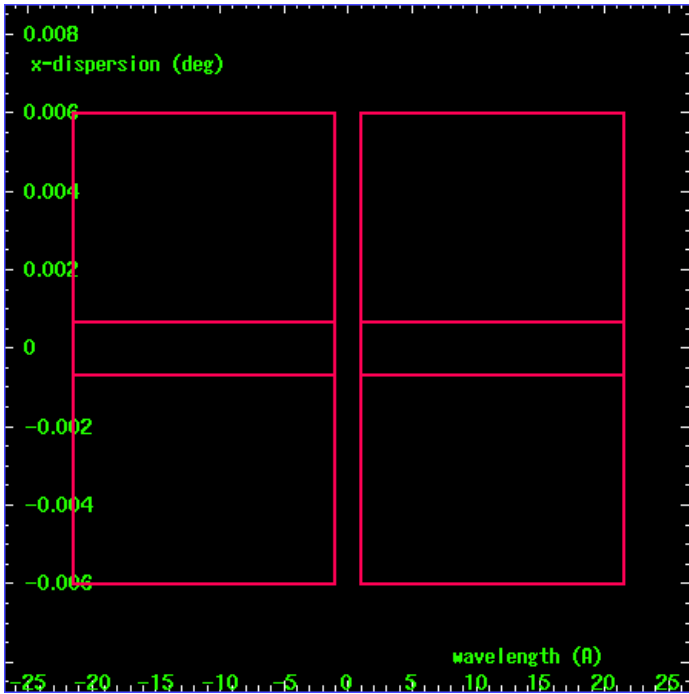
HEG Order Sort 123



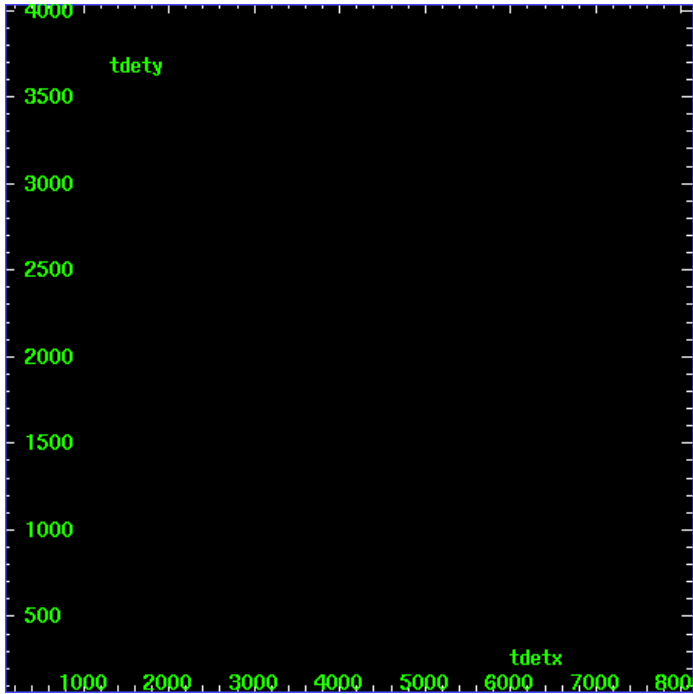
HEG Zero Order



HEG Order Sort ALL

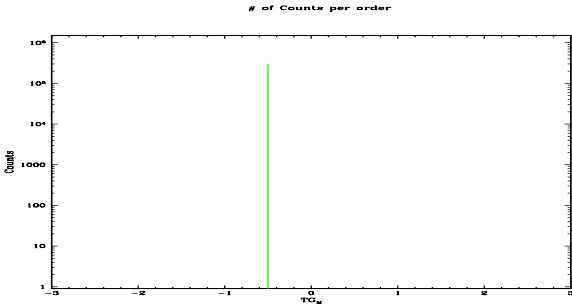


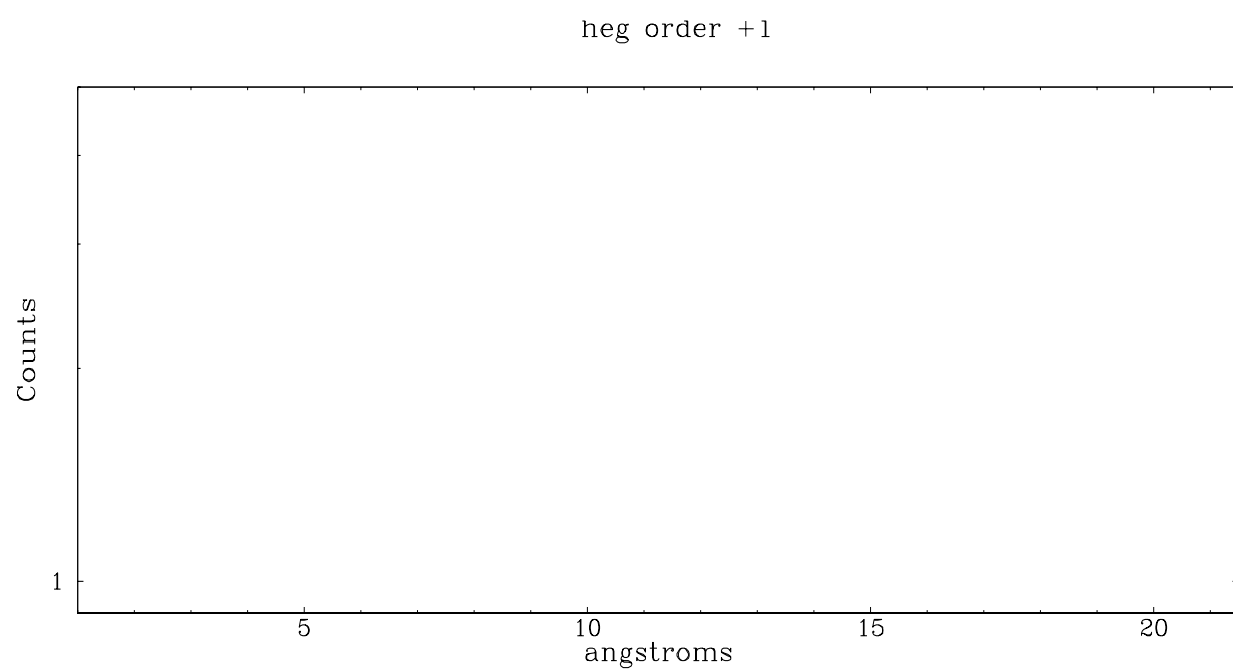
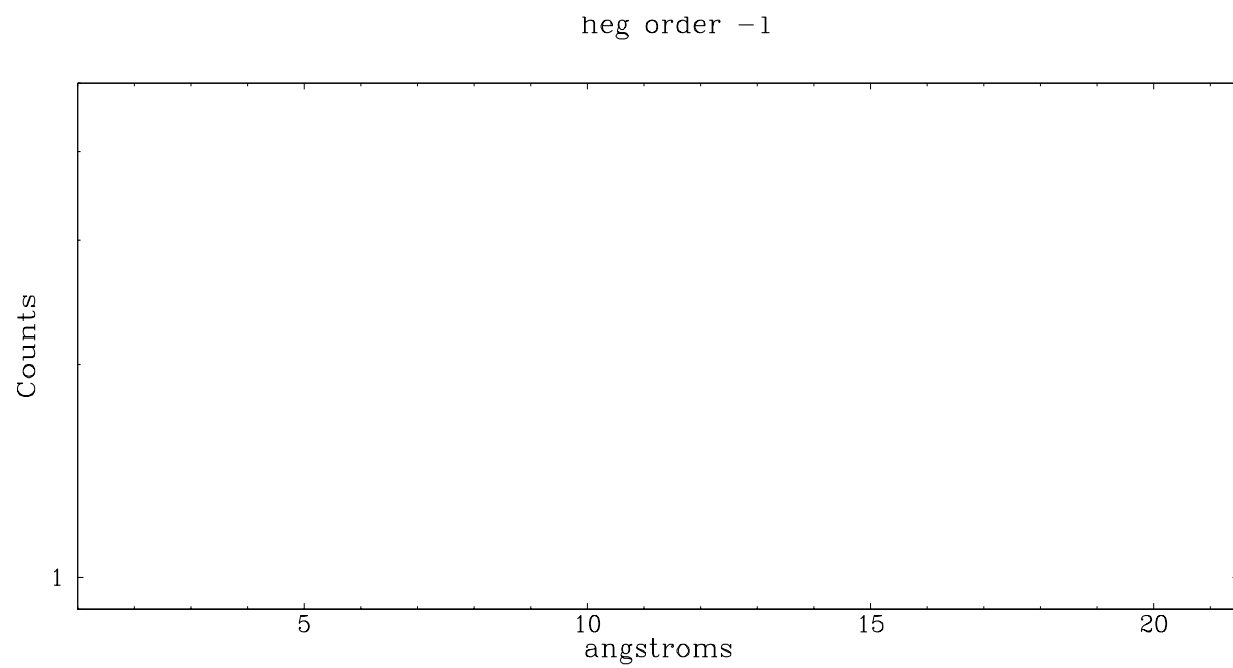
Spot Image HEG



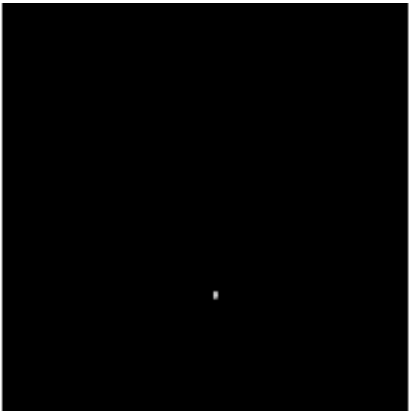
Full Detector HEG

	order -3	order -2	order -1	order 0	order 1	order 2	order 3
Events	0	0	0	298771	0	0	0

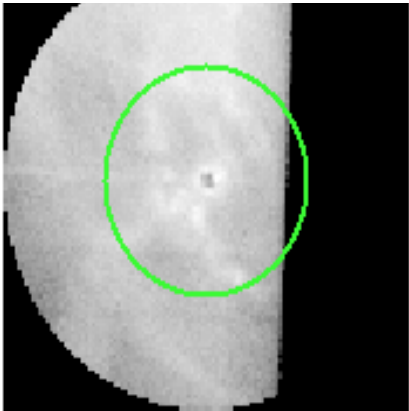




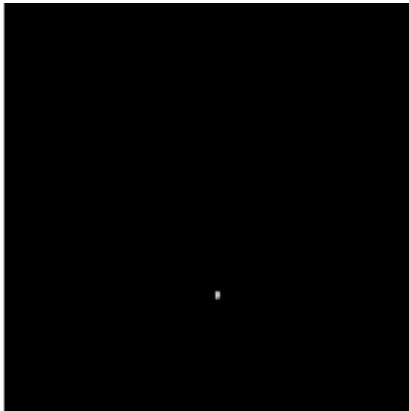
3.2 MEG Arm



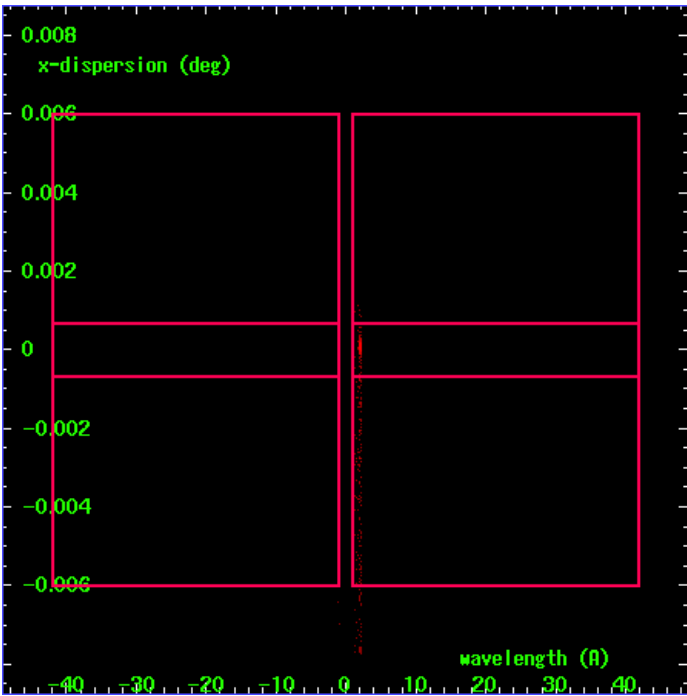
MEG Order Sort 123



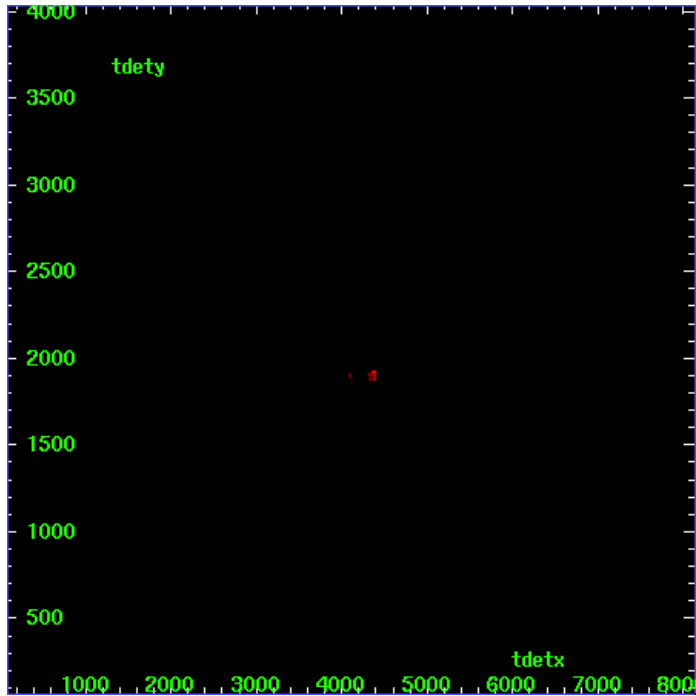
MEG Zero Order



MEG Order Sort ALL

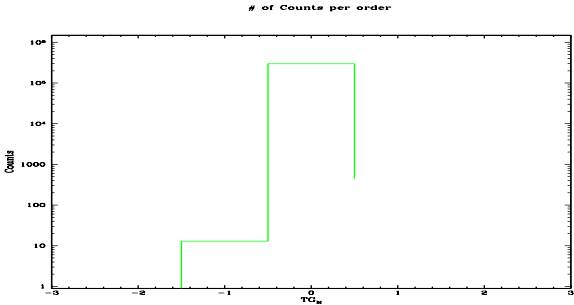


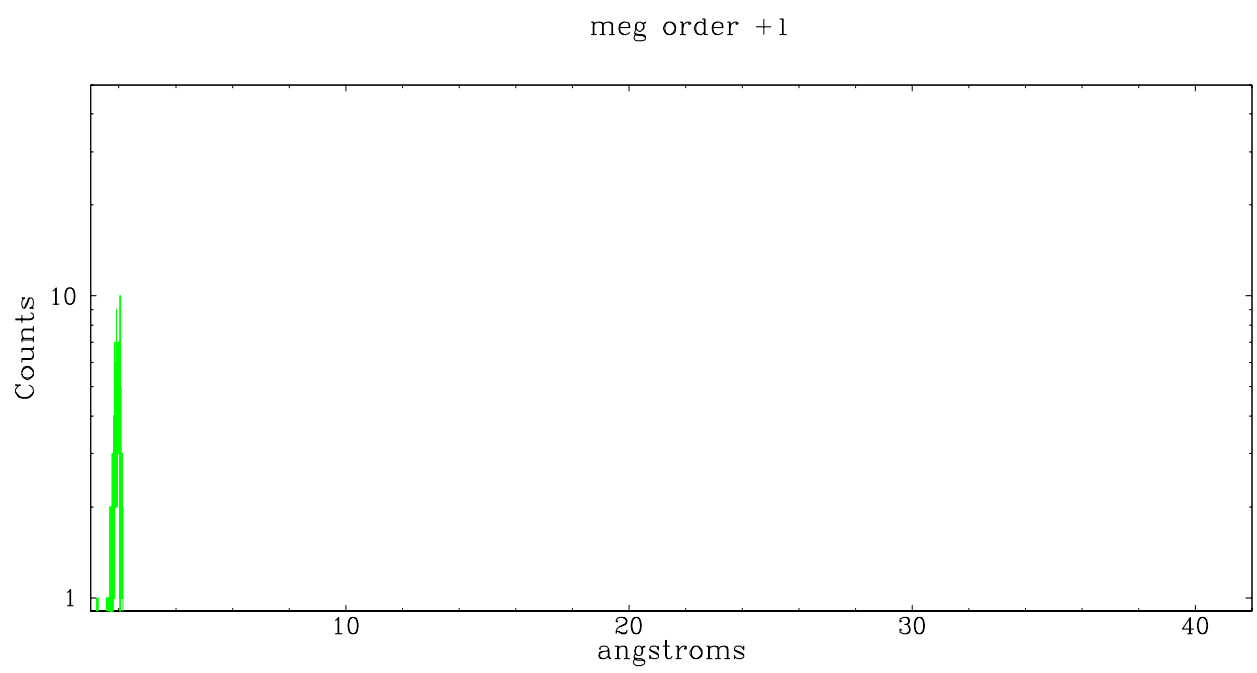
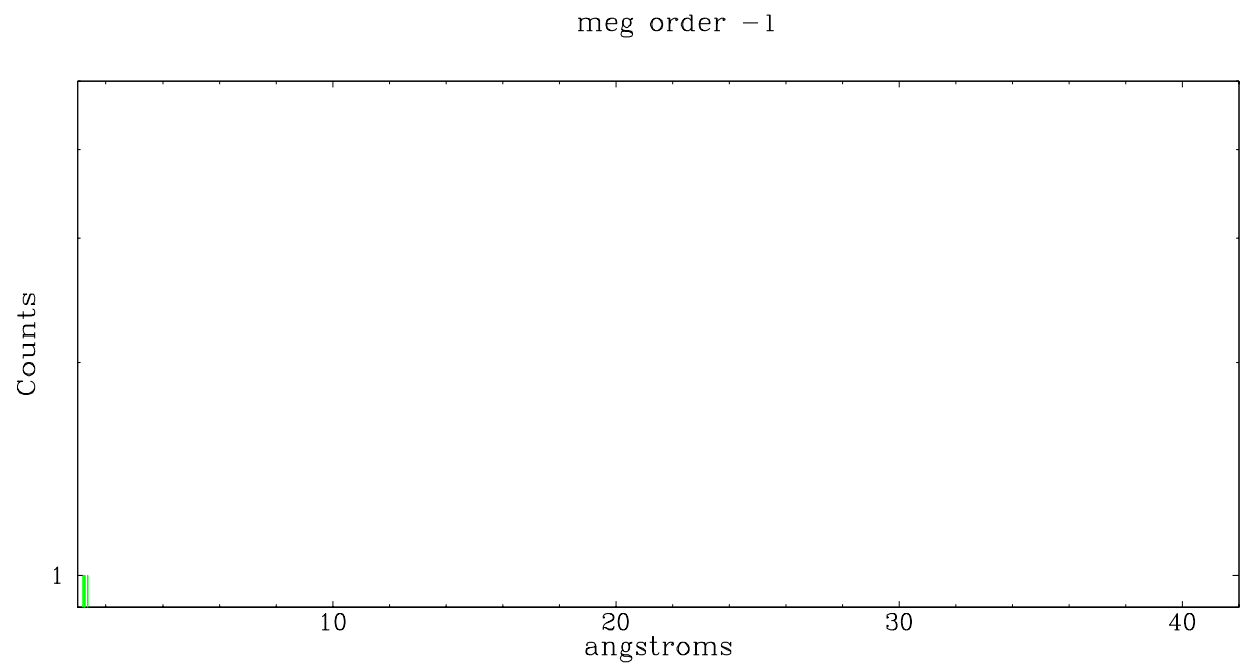
Spot Image MEG



Full Detector MEG

	order -3	order -2	order -1	order 0	order 1	order 2	order 3
Events	0	0	13	298771	444	0	0





A Summary

A.1 Status

V&V Scientist	Jen Lauer
V&V Date (YYYY-MM-DD)	2006.03.26
V&V Edition	1
V&V Disposition and Status	OK
V&V Charge Time	9.8571

A.2 Comments

Monitor constraint met.