

V&V Reference Report

L2 ASCDS Version : 7.6.8.1

Observation 61301 - L2 Version 001
Chandra X-Ray Center

L2 Processing Date : Sep 2 2006

Contents

1	Front	2
2	OBI	3
2.1	OBI	3
2.1.1	Images	3
2.1.2	Bias	3
2.1.3	Parameters	4
2.1.4	Events	4
2.2	Compared Parameters	5
2.3	Aspect	6
2.4	Star Slots	8
2.5	FID Slots	8
A	Summary	9
A.1	Status	9
A.2	Comments	9

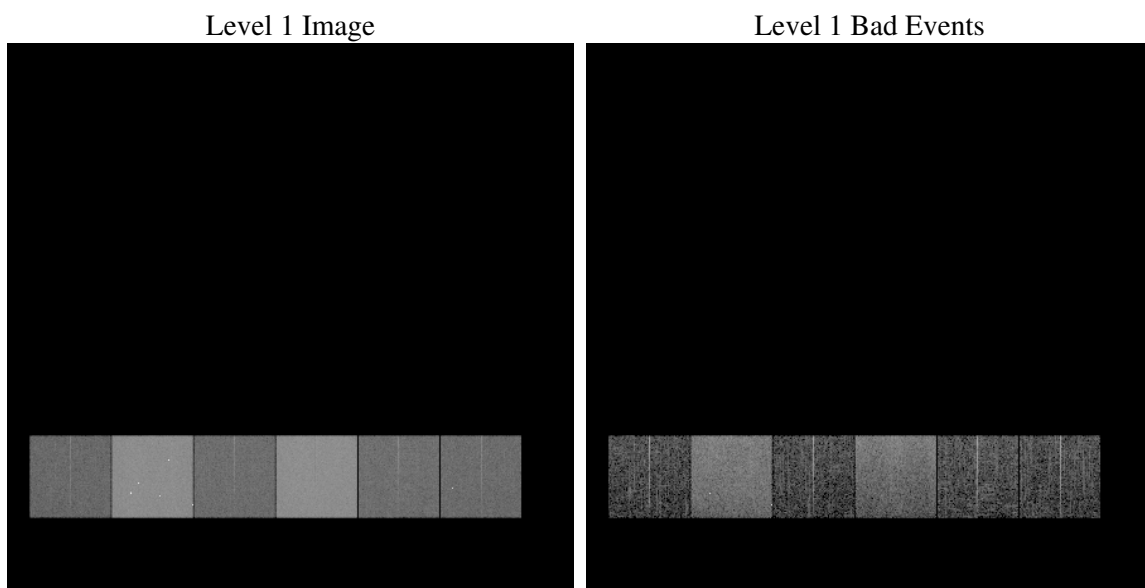
1 Front

seq_num	
obs_id	61301
title	ACIS-456789 diagnostics
observer	CHANDRA engineering request/realtime commanding
object	
dtcycle	0
cycle	P
ra_targ	0.0
dec_targ	0.0
ra_nom	120.03832669644
dec_nom	-42.003234313192
roll_nom	320.70222869732
revision	2
ontime	6611.820144996
livetime	6528.09729716
ontime4	2408.3746810704
ontime5	7049.3910127878
ontime6	2606.0366820246
ontime7	6611.820144996
ontime8	2651.4933219552
ontime9	2557.2981515229
l2events	1195139

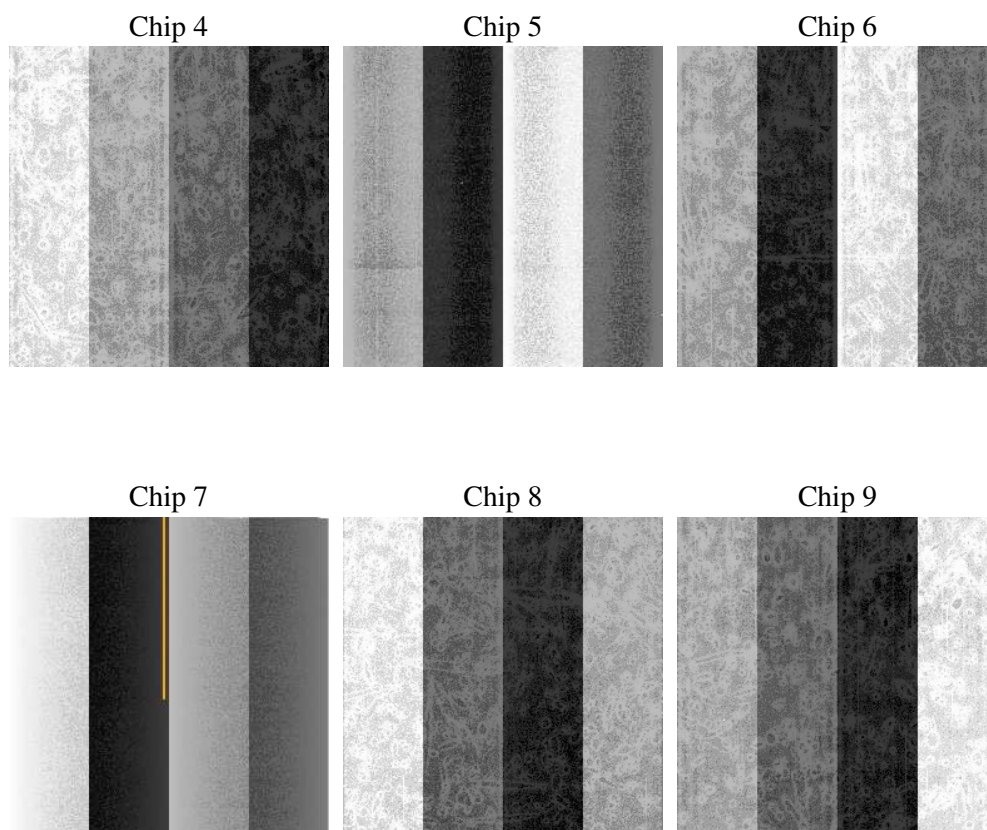
2 OBI

2.1 OBI

2.1.1 Images



2.1.2 Bias



2.1.3 Parameters

obi_num	0
ascdsver	7.6.8.1
caldsver	3.2.3
date	2006-09-02T20:46:50
revision	2

sched_exp_time	0.0
ontime	6614.9002453834
ontime4	2411.3316614628
ontime5	7052.4300731719
ontime6	2609.0347024202
ontime7	6614.9002453834
ontime8	2654.4092623442
ontime9	2560.4192919135
l1events	1450920

2.1.4 Events

	ccd 4	ccd 5	ccd 6	ccd 7	ccd 8	ccd 9
level 1 events	145428	400582	166466	406360	172728	159356
rejected events	20686	61722	20362	48734	24191	21593
rejected %	14%	15%	12%	11%	14%	13%

	ccd 4	ccd 5	ccd 6	ccd 7	ccd 8	ccd 9
grade 0 events	70357	43642	79623	67342	81558	75643
	48%	10%	47%	16%	47%	47%
grade 1 events	367	723	378	152	414	374
	0%	0%	0%	0%	0%	0%
grade 2 events	22267	161852	25442	106736	26247	24344
	15%	40%	15%	26%	15%	15%
grade 3 events	7691	11235	8870	27293	9455	8539
	5%	2%	5%	6%	5%	5%
grade 4 events	7721	10889	9121	26981	9594	8625
	5%	2%	5%	6%	5%	5%
grade 5 events	1197	6919	1481	6809	1696	1554
	0%	1%	0%	1%	0%	0%
grade 6 events	16848	111420	23215	129472	21874	20780
	11%	27%	13%	31%	12%	13%
grade 7 events	18980	53902	18336	41575	21890	19497
	13%	13%	11%	10%	12%	12%

2.2 Compared Parameters

Parameter	Planned	Actual	Parameter	Planned	Actual
Instrument	ACIS	ACIS	Obspar format version number	6	6
Detector	ACIS-456789	ACIS-456789	Obspar file type	PREDICTED	ACTUAL
Grating	NONE	NONE	Obspar update status	NONE	UPDATED
Data mode	FAINT	FAINT	On-chip summing requested	N	N
Observation mode	SECONDARY	SECONDARY	Subarray requested	NONE	NONE
Pointing RA	0	120.0383266964406	Alternating exposures requested	N	N
Pointing Dec	0	-42.00323431319209	Primary exposure time	0.000000	3.2
Pointing Roll	0.0	320.7022286973228			
SIM focus pos (mm)	-0.684267	-0.7809083437167272			
SIM defocus (mm)	0	0.7524282956875696			
SIM translation stage pos (mm)	-190.132523	250.466033080201			
SIM translation stage offset (mm)	0	-0.01005468664627074			
Observation start time	130669670.972	130669670.20317			
Observation start date	2002-02-21T09:07:51	2002-02-21T09:07:50			
Observation end time	130681505.622	130681504.85365			
Observation end date	2002-02-21T12:25:06	2002-02-21T12:25:04			
Read mode	TIMED	TIMED			

2.3 Aspect

2.4 Star Slots

2.5 FID Slots

A Summary

A.1 Status

V&V Scientist	Jen Lauer
V&V Date (YYYY-MM-DD)	2006.09.05
V&V Edition	1
V&V Disposition and Status	OK
V&V Charge Time	6.61182014

A.2 Comments