

# V&V Reference Report

## L2 ASCDS Version : 8.4.5

Observation 61021 - L2 Version 3  
Chandra X-Ray Center

L2 Processing Date : Oct 14 2012

## Contents

<b>1</b>	<b>Front</b>	<b>2</b>
<b>2</b>	<b>OBI</b>	<b>3</b>
2.1	OBI . . . . .	3
2.1.1	Images . . . . .	3
2.1.2	Bias . . . . .	3
2.1.3	Parameters . . . . .	4
2.1.4	Events . . . . .	4
2.2	Compared Parameters . . . . .	5
2.3	Star Slots . . . . .	6
2.4	FID Slots . . . . .	6
<b>A</b>	<b>Summary</b>	<b>7</b>
A.1	Status . . . . .	7
A.2	Comments . . . . .	7

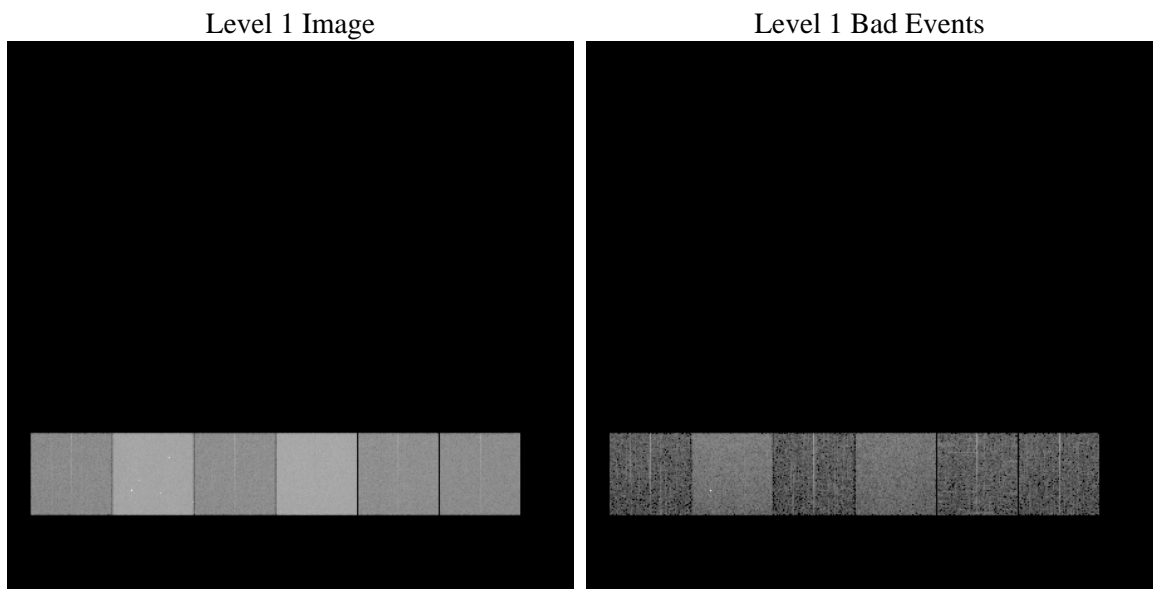
# 1 Front

seq_num	&#160	Sequence number
obs_id	61021	Observation id
title	ACIS-456789 diagnostics	Proposal title
observer	CHANDRA engineering request/realtime commanding	Principal investig
object	&#160	Source name
dtcycle	0	&#160
cycle	P	events from which exps? Prim/Second/Both
ra_targ	0.0	Observer's specified target RA [deg]
dec_targ	0.0	Observer's specified target Dec [deg]
ra_nom	54.638324729983	Nominal RA [deg]
dec_nom	1.3281804975232	Nominal Dec [deg]
roll_nom	89.58942271825	Nominal Roll [deg]
revision	3	Processing version of data
ontime	7707.7349739373	Sum of GTIs [s]
livetime	7610.1349926565	Livetime [s]
ontime4	2781.443033129	Sum of GTIs [s]
ontime5	7791.9999709725	Sum of GTIs [s]
ontime6	3004.3526669145	Sum of GTIs [s]
ontime7	7707.7349739373	Sum of GTIs [s]
ontime8	3033.6046152115	Sum of GTIs [s]
ontime9	2901.3611241281	Sum of GTIs [s]
l2events	1202544	Number of level 2 events

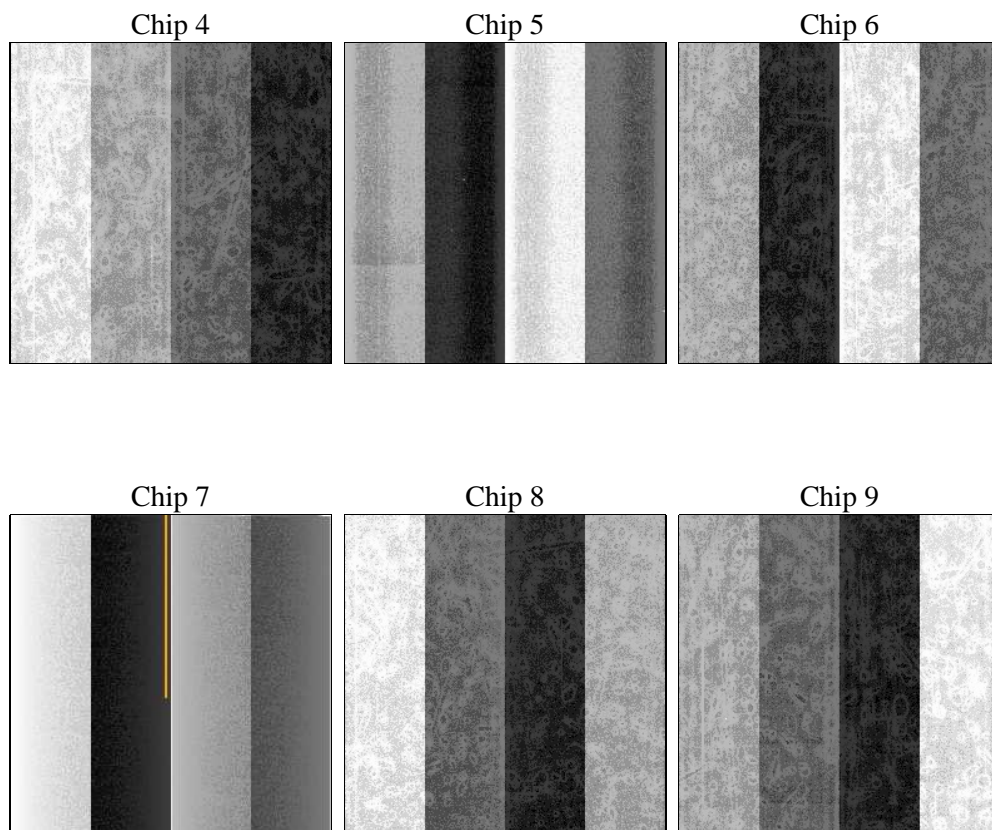
## 2 OBI

### 2.1 OBI

#### 2.1.1 Images



#### 2.1.2 Bias



### 2.1.3 Parameters

obi_num	0	Obi number	sched_exp_time	0.0	[s] Scheduled observation exposure time
ascdsver	8.4.5	Processing system revision	ontime	7707.7349739373	Sum of GTIs [s]
caldbver	4.5.2	&#160	ontime4	2781.443033129	Sum of GTIs [s]
date	2012-10-15T01:31:13	Date and time of file creation	ontime5	7791.9999709725	Sum of GTIs [s]
revision	3	Processing version of data	ontime6	3004.3526669145	Sum of GTIs [s]
			ontime7	7707.7349739373	Sum of GTIs [s]
			ontime8	3033.6046152115	Sum of GTIs [s]
			ontime9	2901.3611241281	Sum of GTIs [s]
			l1events	1435426	Number of level 1 events

### 2.1.4 Events

	ccd 4	ccd 5	ccd 6	ccd 7	ccd 8	ccd 9		ccd 4	ccd 5	ccd 6	ccd 7	ccd 8	ccd 9
level 1 events	145474	383832	166498	412622	171515	155485	grade 0 events	71846	82099	78933	94354	81369	74320
rejected events	21126	52404	21567	40238	24126	21035		49%	21%	47%	22%	47%	47%
rejected %	14%	13%	12%	9%	14%	13%	grade 1 events	479	774	372	258	399	413
								0%	0%	0%	0%	0%	0%
							grade 2 events	20093	115623	25164	82915	25796	22984
								13%	30%	15%	20%	15%	14%
							grade 3 events	8192	21902	8945	37794	9467	8572
								5%	5%	5%	9%	5%	5%
							grade 4 events	8349	21532	9001	37606	9362	8532
								5%	5%	5%	9%	5%	5%
							grade 5 events	1401	10198	1588	7947	1833	1573
								0%	2%	0%	1%	1%	1%
							grade 6 events	16021	90413	22888	119875	21395	20220
								11%	23%	13%	29%	12%	13%
							grade 7 events	19093	41291	19607	31873	21894	18871
								13%	10%	11%	7%	12%	12%

## 2.2 Compared Parameters

Parameter	Planned	Actual	Parameter	Planned	Actual
Instrument	ACIS	ACIS	Obspar format version number	7	7
Detector	ACIS-456789	ACIS-456789	Obspar file type	PREDICTED	ACTUAL
Grating	NONE	NONE	Obspar update status	NONE	UPDATED
Data mode	FAINT	FAINT	On-chip summing requested	N	N
Observation mode	SECONDARY	SECONDARY	Subarray requested	NONE	NONE
[deg] Pointing RA	0	54.63832472998316	Alternating exposures requested	N	N
[deg] Pointing Dec	0	1.328180497523153	[s] Primary exposure time	0.000000	3.2
[deg] Pointing Roll	0.0	89.58942271825009			
[mm] SIM focus pos	-0.684267	-0.6828225247311905			
[mm] SIM defocus	0	0.8505141146731063			
[mm] SIM translation stage pos	-190.132523	250.466033080201			
[mm] SIM translation stage offset	0	-0.01005468664627074			
[s] Observation start time (MET)	149409457.944324	149409456.91961			
Observation start date	2002-09-26T06:37:38	2002-09-26T06:37:36			
[s] Observation end time (MET)	149422247.894854	149422246.87014			
Observation end date	2002-09-26T10:10:48	2002-09-26T10:10:46			
Read mode	TIMED	TIMED			

## 2.3 Star Slots

## 2.4 FID Slots

## **A Summary**

### **A.1 Status**

V&V Scientist	Jen Lauer
V&V Date (YYYY-MM-DD)	2012.10.24
V&V Edition	1
V&V Disposition and Status	OK
V&V Charge Time	7.7077349739373

### **A.2 Comments**